

1 **TITLE:** Characteristics of anti-SARS-CoV-2 antibodies in recovered COVID-19 subjects.

2

3 **RUNNING TITLE:** SARS-CoV-2 antibodies in recovered COVID-19 subjects.

4

5 **AUTHOR LIST:**

6 Huynh, Angela¹; Arnold, Donald M.^{1,2}; Smith, James W.¹; Moore, Jane C.¹; Zhang, Ali^{3,4,5};

7 Chagla, Zain^{1,6}; Harvey, Bart J.^{7,8}; Stacey, Hannah D.^{3,4,5}; Ang, Jann C.^{3,4,5}; Clare, Rumi¹; Ivetic,

8 Nikola¹; Chetty, Vasudhevan T.⁹; Bowdish, Dawn ME^{1,3,4}; Miller, Matthew S.^{3,4,5}; Kelton, John

9 G.^{1,2}; Nazy, Ishac^{1,2}

10

11 **AFFILIATE INSTITUTIONS:**

12 ¹Department of Medicine, Michael G. DeGroote School of Medicine, McMaster University,

13 Hamilton, Ontario, Canada; ²McMaster Centre for Transfusion Research, Hamilton, Ontario,

14 Canada; ³Michael G. DeGroote Institute for Infectious Disease Research, Hamilton, Ontario,

15 Canada; ⁴McMaster Immunology Research Centre, Hamilton, Ontario, Canada; ⁵Department of

16 Biochemistry and Biomedical Sciences, McMaster University, Hamilton, Ontario, Canada;

17 ⁶Division of Infectious Diseases, Department of Medicine, McMaster University, Hamilton,

18 Ontario, Canada; ⁷Hamilton Public Health Services, Hamilton, Ontario, Canada; ⁸Dalla Lana

19 School of Public Health, University of Toronto, Toronto, Ontario, Canada; ⁹HRLMP McMaster

20 University, St Joseph's Healthcare Hamilton, Hamilton, ON, Canada

21

22 **CORRESPONDENCE AUTHOR(S):**

23 Ishac Nazy, PhD

24 HSC 3H53

25 1280 Main Street West

26 Hamilton, ON, Canada L8S 4K1

27 Tel: (905) 525-9140 x20242

28 Fax: (905) 529-6359

29 Email: nazii@mcmaster.ca

30

31 **Abstract word count:** 200

32 **Main text word count:** 3487

33 **Table and Figures:** 2 Tables and 4 Figures

34 **References:** 47

35

36 **Abstract:**

37 Coronavirus Disease 2019 (COVID-19) is a global pandemic caused by the novel severe acute
38 respiratory syndrome coronavirus 2 (SARS-CoV-2). While detection of SARS-CoV-2 by
39 polymerase chain reaction with reverse transcription (RT-PCR) is currently used to diagnose
40 acute COVID-19 infection, serological assays are needed to study the humoral immune response
41 to SARS-CoV-2. SARS-CoV-2 IgG/A/M antibodies against SARS-CoV-2 spike (S) protein and
42 its receptor-binding domain (RBD) were characterized using an enzyme-linked immunosorbent
43 assay (ELISA) and assessed for their ability to neutralize live SARS-CoV-2 virus in recovered
44 subjects who were RT-PCR-positive (n=153), RT-PCR-negative (n=55), and control samples
45 collected pre-COVID-19 (n=520). Anti-SARS-CoV-2 antibodies were detected in 90.9% of
46 resolved subjects up to 180 days post-symptom onset. Anti-S protein and anti-RBD IgG titers
47 correlated ($r = 0.5157$ and $r = 0.6010$, respectively) with viral neutralization. Of the RT-PCR-
48 positive subjects, 22 (14.3%) did not have anti-SARS-CoV-2 antibodies; and of those, 17 had
49 RT-PCR cycle threshold (Ct) values >27 , raising the possibility that these indeterminate results
50 are from individuals who were not infected, or had mild infection that failed to elicit an antibody
51 response. This study highlights the importance of serological surveys to determine population-
52 level immunity based on infection numbers as determined by RT-PCR.

53

54 **Keyword:** SARS-CoV-2, COVID-19, antibody, serology

55

56 **Introduction:**

57 Coronavirus disease 2019 (COVID-19) is caused by the novel severe acute respiratory
58 syndrome coronavirus 2 (SARS-CoV-2) [1]. Asymptomatic and pre-symptomatic virus
59 transmission is one of the biggest challenges with the global pandemic [2]. It is estimated up to
60 80% of people infected with COVID-19 have none or mild symptoms and asymptomatic
61 transmission accounts for half of all COVID-19 infections [3-5]. Approximately 20% of
62 symptomatic infections are severe, disproportionately impacting the elderly and patients with
63 underlying health conditions [6, 7].

64 Laboratory diagnosis of COVID-19 is made using polymerase chain reaction with reverse
65 transcription (RT-PCR) to detect viral mRNA from nasal or throat swabs [8-11]. Viral RNA is
66 detectable as early as the first day of symptom onset and peaks within the first week of symptom
67 onset [9]. The SARS-CoV-2 spike (S) protein, specifically the receptor-binding domain (RBD),
68 facilitates viral entry into the cell via the angiotensin-converting enzyme-2 (ACE2) receptor on
69 host cells [12-15]. Most people with a confirmed RT-PCR diagnosis of SARS-CoV-2 infection
70 develop IgG, IgA and IgM antibodies against S protein within 1–2 weeks of symptom onset and
71 continue to circulate after initial viral clearance [16-21].

72 Serological studies have shown IgG antibodies to SARS-CoV-2 S protein and RBD are
73 detected in the circulation of greater than 90% of infected subjects by 10–11 days post-symptom
74 onset [16, 18, 20, 22]. Virus-specific neutralizing antibodies, either induced through infection or
75 vaccination, can block viral infection [23]. Although antibodies may be generated against
76 multiple domains within the S protein, most neutralizing antibodies and highly potent
77 monoclonal antibodies target the RBD [15, 24]. In this report, we profile the IgG, IgA, and IgM
78 responses to the SARS-CoV-2 S protein and RBD in a cross-sectional serological study

79 involving resolved COVID-19 infection. We also compared antibody levels with viral
80 neutralization and RT-PCR results.

81

82 **Methods and Materials:**

83 *Study Design*

84 Subjects who recovered from COVID-19 infection were identified by treating physicians, public
85 health officials and through hospital discharge databases that included hospitals in Hamilton,
86 Ontario, Canada (Hamilton General Hospital, Juravinski Hospital, McMaster University Medical
87 Centre, and St. Joseph's Healthcare). The study inclusion criteria were ≥ 18 years of age, either
88 testing positive or negative for COVID-19 in the RT-PCR, with no exclusion criteria.

89 Participants with RT-PCR-positive results for SARS-CoV-2 and had since recovered (resolved
90 RT-PCR-positive, n=153), and subjects who experienced symptoms but tested negative by RT-
91 PCR (RT-PCR-negative, n=55) were included. Participants were interviewed by phone and self-
92 reported their age, sex, symptom onset date and RT-PCR test date and result. Pre-COVID-19
93 control samples were selected from healthy donors (n=37) and samples sent for the ITP Registry
94 biobank from the McMaster Platelet Immunology Laboratory drawn prior to November 2019
95 (pre-COVID-19, n=483) before documented local community transmission of SARS-CoV-2.
96 Serum was collected by venipuncture and cryopreserved until use. This study was approved by
97 the Hamilton Integrated Research Ethics Board (HIREB) and written informed consent was
98 obtained from all participants.

99 *Production of recombinant SARS-CoV-2 S protein and RBD*

100 A detailed protocol outlining protein production can be found in a study by Stadlbauer *et al* [25]
101 and is outlined in the Supplemental methods.

102 *Measuring SARS-CoV-2 antibodies*

103 Microtitre well plates (384 wells, Nunc Maxisorp, Rochester, NY, USA) were coated with
104 25 μ L/well of S protein (5 μ g/mL) or RBD (2 μ g/mL) suspended in 50 mM carbonate-bicarbonate
105 buffer (pH 9.6). The plates were then blocked with 100 μ L/well of 3% skim milk prepared in
106 phosphate buffered saline (PBS) with 0.05% Tween 20 at room temperature for 2-hours. The
107 blocking solution was removed, and diluted serum samples (1/100 prepared in 1% skim milk in
108 PBS/0.05% Tween 20) in technical duplicates were added to the plates and incubated for 1-hour
109 at room temperature. The plates were washed twice with PBS/0.05% Tween 20 and thrice with
110 PBS. Bound human antibodies (IgG, IgA, or IgM) were detected with 25 μ L/well of alkaline
111 phosphatase conjugated goat anti-human IgG (γ -chain-specific, 1/2000, Jackson
112 ImmunoResearch Laboratories, Inc, Westgrove, PA, USA), goat anti-human IgA (α -chain-
113 specific; 1/500, Jackson ImmunoResearch Laboratories, Inc, Westgrove, PA, USA) antibody, or
114 goat anti-human IgM (μ -chain-specific; 1/1000, Jackson ImmunoResearch Laboratories, Inc,
115 Westgrove, PA, USA) antibody prepared in PBS/0.05% Tween 20 with 1% skim milk. Plates
116 were washed as before and followed with the addition of 50 μ L substrate (4-
117 nitrophenylphosphate disodium salt hexahydrate in diethanolamine (MilliporeSigma, St. Louis,
118 MO, USA). The optical density (OD) was read at 405nm and 490nm (as a reference) measured
119 using a BioTek 800TS microplate reader (BioTek, Winooski, VT, USA). The assay cut-off was
120 determined as the mean and 3 standard deviations (SD) of the pre-COVID-19 control population.
121 Data are shown as a ratio of observed OD to the determined assay cut-off OD. OD ratio values
122 above 1 ratio were considered positive in the SARS-CoV-2 ELISA. Results for optimization of

123 antigens, serum concentrations for the ELISA and its comparisons to commercially available
124 assays can be found in the Supplemental data.

125 *PCR Cycle threshold (Ct) values of resolved COVID-19 samples*

126 RT-PCR Ct values were retrieved from a subset of resolved subjects' original test date RT-PCR
127 (n=54). A detailed protocol of the in-house RT-PCR run by the Hamilton Regional Laboratory
128 Medicine Program virology lab is outlined in the Supplemental methods.

129 *Detecting neutralizing antibodies for SARS-CoV-2*

130 Vero E6 cells (ATCC CRL-1586) were seeded at a density of 2.5×10^4 cells per well in opaque 96
131 well flat-bottom plates (Costar) in complete DMEM (supplemented with 10% FBS, 1% L-
132 glutamine, 100U/ml penicillin-streptomycin). After 24-hours of incubation, serum (resolved and
133 RT-PCR-negative subjects) was inactivated by incubating at 56°C for 30 minutes, then diluted
134 1:10 in low serum DMEM (supplemented with 2% FBS, 1% L-glutamine, 100U/mL penicillin-
135 streptomycin), followed by a 1:2 dilution series in 96 well U-bottom plates resulting in a final
136 volume of 55µL diluted serum per well. An equal volume of SARS-CoV-2/SB3-TYAGNC
137 consisting of 330 PFU per well was then added to the diluted serum and the serum-virus mixture
138 was incubated at 37°C for 1-hour. Next, the Vero E6 culture media was then replaced with 100
139 µL of the serum-virus mixture and was incubated at 37°C for 72-hours. The plates were read by
140 removing 50µL of culture supernatant and adding 50µL of CellTiter-Glo 2.0 Reagent (Promega,
141 G9243) to each well. The plates were then shaken at 282cpm at 3 mm diameter for 2-minutes,
142 incubated for 5-minutes at room temperature and luminescence was read using a BioTek
143 Synergy H1 microplate reader with a gain of 135 and an integration time of 1-second. Results are
144 expressed as geometric microneutralization titers at 50% (MNT50).

145 *Statistical Analyses*

146 Descriptive statistics were used to summarize the IgG, IgA, and IgM binding to S protein and
147 RBD as measured by mean OD across antigen and technical replicates. Differences between data
148 were tested for statistical significance using the paired or unpaired t-test and the Mann-Whitney
149 test. P-values are reported as 2-tailed. Correlations were calculated using standard Pearson
150 correlation. All statistical analyses were conducted using GraphPad Prism (version 7.0a,
151 GraphPad Software, San Diego, USA).

152

153 **Results:**

154 *Study Demographics*

155 Resolved (RT-PCR-positive, n=153) samples were collected between 7-211 days post-symptom
156 onset. Median age of the resolved RT-PCR-positive subjects was 49 years (range: 18 – 82) and
157 95 subjects (62.1%) were female. COVID-19 negative subjects (RT-PCR-negative, n=55)
158 samples were collected between 7-246 days post-symptoms (Table 1). The median age of the
159 RT-PCR-negative subjects was 49 years (range: 20 – 89) and 39 (70.9%) were female (Table 1).
160 Eleven (7.2%) of the RT-PCR-positive resolved subjects and 37 (67.3%) of the RT-PCR-
161 negative subjects were asymptomatic before testing.

162 *Detecting SARS-CoV-2 antibodies in resolved COVID-19 subjects*

163 To study the antibody response to SARS-CoV-2, we tested for IgG, IgA, and IgM antibodies to
164 the S protein and RBD in pre-COVID-19 controls (n=520), resolved COVID-19 subjects
165 (n=153), and RT-PCR-negative subjects (n=55). Pre-COVID-19 controls (n=520) were used to
166 determine the background reactivity to the S protein and RBD using samples from individuals

167 drawn before COVID-19 (pre-November 2019). The cut-off was determined as the mean plus
168 3SD of the OD readings in the pre-COVID-19 control population. Most pre-COVID-19 controls
169 had only background reactivity for both the full-length S protein and RBD (IgG = 98.9%, n=
170 514/520 and 98.5%, n = 512/520 below established cut-off, respectively). Each antigen and
171 antibody class had a few pre-COVID-19 controls that tested positive for the antibodies based on
172 the determined cut-off. The majority of pre-COVID-19 controls that tested positive within the
173 groups had IgM against both S protein and RBD, 1.5% (n = 8/520 testing antibody-positive) and
174 2.1% (n= 11/520 antibody-positive), respectively. Some control samples were positive in the S
175 protein- and RBD-specific IgA assays: 1.3% (n = 7/520 antibody-positive) and 1.0% (n = 5/520
176 antibody-positive), respectively. Antigen concentration of S protein and RBD and serum
177 dilutions were optimized by testing known COVID-19-positive and pre-COVID-19 samples (see
178 Supplemental data).

179 Of the 153 resolved COVID-19 subjects tested, 131 (85.6%) tested positive for antibodies
180 against SARS-CoV-2 (IgG, IgA, or IgM antibodies against the S protein or RBD, Table 2) and
181 22 (14.4%) did not have detectable antibodies against SARS-CoV-2. Of the 55 RT-PCR-negative
182 subjects, three had reactivity to the SARS-CoV-2 antigens (5.5%, Table 2). Most resolved
183 subjects tested positive for anti-S protein and anti-RBD IgG (n=130/153 testing positive (85.0%)
184 and n=119/153 testing positive (77.8%), respectively, Supplemental data). In addition, some of
185 the same resolved subjects also tested positive for anti-S protein IgA (60.1%, 92/153 antibody-
186 positive), anti-S protein IgM (35.3%, 54/153 antibody-positive), and anti-RBD IgA (24.2%,
187 37/153 antibody-positive) and IgM (19.6%, 30/153 antibody-positive).

188 *High Ct counts found in resolved subjects who were SARS-CoV-2 antibody-negative*

189 To further understand RT-PCR-positive COVID-19 subjects that tested negative for anti-SARS-
190 CoV-2 antibodies, 22/153 (14.4%) resolved subjects were further investigated. The Ct values
191 from the initial RT-PCR test were obtained for 54/153 (35.3%) of the resolved participants,
192 including 18/22 (81.8%) who were RT-PCR-positive but antibody-negative. The Ct values for
193 the RT-PCR-positive/antibody-negative subjects (n=18) ranged from 16.00 to 37.38, with a
194 mean of 32.29 ± 4.647 , whereas the mean of the subjects who were RT-PCR-positive/antibody-
195 positive was 22.92 ± 5.177 (range = 14.99 – 34.94, n=36, Figure 1A, 1B). Sera from 13 of 18
196 resolved subjects who tested RT-PCR-positive/antibody-negative were collected within 60 days
197 after initial RT-PCR test, within the reported optimal time for anti-SARS-CoV-2 antibodies
198 (Figure 1C) [18, 20, 21, 26].

199 During assay validation, 14 resolved subjects (9 antibody-positive and 5 antibody-negative) were
200 tested in the commercially available EUROIMMUN Anti-SARS-CoV-2 ELISA and the Ortho
201 Clinical Diagnostics COVID-19 IgG Antibody Test. There was 100% correlation between the
202 commercial reference assays and our in-house developed assays. Three of the 14 in validation
203 testing were RT-PCR-positive/antibody-negative and had high Ct value samples and were
204 confirmed to be negative for SARS-CoV-2 antibodies in the commercial reference assays
205 (Supplemental data).

206 *Persistence of anti-S protein and anti-RBD antibodies in resolved subjects*

207 IgG antibodies against S protein and RBD were detected in samples collected >120 days from
208 symptom onset (Figure 2A)[5, 16, 18, 20]. Anti-S protein IgG was found in all resolved
209 participants collected between 60 and 120 days (23/153 resolved subjects). In the resolved
210 patients collected between 120 and 180 days from symptom onset, there was a decrease in the
211 percentage of antibody-positive samples when compared to the previous time bin (55/60

212 samples, 91.7%). Of the resolved subjects tested >180 days of symptom onset (n=11), 90.9% had
213 an anti-S protein IgG antibody. However, IgG levels against RBD demonstrated a 14.8%
214 decrease in subjects who were antibody-positive between 120-180 days when compared to the
215 groups before 120 days, and a 30% decrease in subjects with antibody after 180 days (Figure
216 2A). In contrast, IgA and IgM to both antigens were much less sustained (IgA - Figure 2B, IgM
217 – Figure 2C). After reaching a maximum in the 0–60 days bin, there was a clear and continuous
218 decline throughout the time series such that after 180 days, the anti-S protein and anti-RBD IgA
219 levels in subject groups declined by 30% and 80% respectively, while IgM levels for both
220 antigens declined by 90% (IgA - Figure 2B, IgM – Figure 2C).

221 *Investigation of neutralizing SARS-CoV-2 antibodies*

222 Neutralization potency was measured using a microneutralization assay with live SARS-CoV-2
223 virus. In all resolved subjects, the presence of high titers of anti-S protein and anti-RBD IgG
224 moderately correlated with higher titers of neutralizing antibodies (Figure 3A, 3B, $r=0.5157$,
225 $p<0.0001$ anti-S protein IgG and $r=0.601$, $p<0.0001$ anti-RBD IgG). Weaker correlations were
226 found between neutralizing antibody titers and anti-S protein IgA ($r=0.4507$), IgM ($r=0.4443$),
227 and anti-RBD IgA ($r=0.3055$), IgM ($r=0.3365$). Geometric MNT50s ranged from below
228 detection limit (MNT50 = 5) to MNT50=1280. Resolved subjects who were only antibody-
229 positive for anti-S protein IgG but not antibody-positive for anti-RBD IgG antibodies (n=11)
230 either had lower neutralizing antibody levels (mean MNT50 = 19.5, range 5 - 80) or were
231 undetectable. No temporal trends were observed based on this cross-sectional study of resolved
232 subjects, however neutralizing antibodies in resolved subjects were detected as far as 180 days
233 post-symptom onset (Figure 3C). After 180 days, 3/11 (27.3%) of subjects tested for neutralizing
234 antibodies had a level above MNT50=160.

235 *SARS-CoV-2 antibody profile of asymptomatic, non-hospitalized, and hospitalized resolved*
236 *subjects*

237 Of the 153 resolved subjects tested, eight (5.2%) were hospitalized for SARS-CoV-2 infection
238 and were positive for anti-SARS-CoV-2 antibodies. All hospitalized subjects had detectable anti-
239 RBD and anti-S protein IgG, and anti-S protein IgA antibodies in their serum (Figure 4A and
240 4B). The levels of anti-S protein and anti-RBD IgG (mean OD₄₀₅ ratio) in resolved subjects who
241 were hospitalized were significantly higher than the non-hospitalized resolved population (anti-S
242 protein IgG; 5.667 ± 0.065 vs. 3.836 ± 1.831 , $p < 0.001$; anti-RBD IgG 5.240 ± 0.8483 vs.
243 2.758 ± 1.730 , $p < 0.001$). All other antigen and antibody classes were not significantly different
244 between hospitalized and non-hospitalized resolved subjects. When compared to resolved
245 hospitalized subjects (range: 3.209 – 5.831), there was a larger spread in antibody levels in the
246 non-hospitalized population (range: 0.1508 – 5.828; Figure 4).

247 Of the resolved COVID-19 study participants collected, 11 (7.2%) were asymptomatic. Six of
248 the 11 (54.5%) asymptomatic subjects did not produce any anti-S protein or anti-RBD antibodies
249 (Figure 4). Six of the asymptomatic subjects were in the category of RT-PCR-positive/antibody-
250 negative with a high Ct value.

251

252 **Discussion:**

253 Understanding the characteristics of the SARS-CoV-2 antibodies will inform on the
254 seroprevalence in communities and portions of the COVID-19 immune response. We describe
255 initial cross-sectional results of our longitudinal study of quantitative and functional SARS-CoV-
256 2 antibodies in resolved subjects. The expression of IgG, IgA and IgM antibodies reactive to the
257 immunogenic S protein and the RBD varied based on infection of SARS-CoV-2, severity of the

258 disease, and time delay from onset of symptoms to blood draw. We also observed temporal and
259 functional differences in anti-SARS-CoV-2 antibodies based on Ig classes and antigen.

260 Antibodies to SARS-CoV-2 were found in 131/153 (85.6%) subjects who tested positive
261 in the RT-PCR. In 22 of 153 (14.4%) resolved subjects who tested RT-PCR-positive, no
262 antibodies against SARS-CoV-2 were detected, which prompted further investigation using Ct
263 values. Of 18 samples of whom Ct values were available, 17 had high Ct values (32.29 ± 4.647 ,
264 range = 16.00 to 37.38, Figure 1D). The variation in antibody response in RT-PCR-positive
265 subjects may be due to multiple contributing factors including the size of the viral inoculum, the
266 genetic background of patients, and the presence of concomitant pathological conditions [27].
267 Studies have reported that after COVID-19 infection in some subjects, no antibodies can be
268 detected in circulation either because they have waned quickly, or that their immune response is
269 dependent on T cell responses [28-30]. Another factor is disease severity in the detection of
270 SARS-CoV-2 antibodies. Strong neutralizing antibody responses may require more extensive
271 affinity maturation, which is detected more in COVID-19 patients with severe disease symptoms
272 [27, 31, 32]. Therefore, it is possible that the inability to detect antibodies in RT-PCR-positive
273 subjects may be due to an infection insufficient of magnitude or durability [33]. Another
274 possibility can be that the RT-PCR-positive/antibody-negative subjects had high Ct values at the
275 limit of detection for the assay and did not actually contract the SARS-CoV-2 virus. One study
276 showed there is reduced probability of cultivable viral cultures from samples with a Ct > 24 or
277 when samples are obtained >8 days after symptom onset [34], and another study showed Ct
278 values above 33-34 were not associated with cell culture viral recovery [35]. The developed
279 ELISA for all Ig classes against S protein and RBD antigens has a sensitivity of 97.1% after
280 removal of these 17 subjects with indeterminate test results from analysis.

281 Two subjects enrolled in this study were categorized as RT-PCR-negative based on a
282 second RT-PCR test. Their initial RT-PCR test was positive, but retested RT-PCR-negative
283 within 1-2 days after the first result due to the initial test having a high Ct value positive result
284 without any symptoms or contact history. It is possible that some of the RT-PCR-
285 positive/antibody-negative subjects with high Ct values, would have tested negative in a repeated
286 RT-PCR test as well. A study showing repeat testing of the same subjects describes 6.8% of
287 participants who initially test positive, tested negative in a follow-up RT-PCR test [36].
288 Repeating tests can reduce false-positive results, especially in those who have minimal indicators
289 for having been infected. Another way to distinguish possible false-positive results in the RT-
290 PCR is to use a combination of RT-PCR testing and antibody testing to improve the accuracy of
291 COVID-19 diagnosis. One study utilizing rapid antigen diagnostic tests in combination with
292 IgM/IgG detection, identified more subjects with COVID-19 admitted in an emergency
293 department than when the assays are performed separately [37].

294 Conversely, SARS-CoV-2 antibodies were detected in three (5.5%) subjects in the cohort
295 who tested RT-PCR-negative. Detection of SARS-CoV-2 antibodies in these samples may be a
296 result of cross-reactivity of the antibodies with seasonal coronaviruses from previous infections
297 [38, 39]. In the pre-COVID-19 samples (n=520), 11 (2.1%) had cross-reactivity to the SARS-
298 CoV-2 antigens. Additionally, one of the three subjects who was RT-PCR-negative and positive
299 for SARS-CoV-2 antibody was tested in the RT-PCR 113 days after initial symptom onset,
300 which is later than the optimal timing since symptom onset for RT-PCR testing, possibly being
301 the reason for a false-negative RT-PCR test. Taking into account the RT-PCR-negative cohort of
302 subjects, we calculate the overall specificity of the in-house ELISA to be 96.7%.

303 Antibody kinetics reported previously in SARS-CoV-2 infected subjects suggest that
304 titers of the virus-specific IgG and IgM antibodies increase 21 days post symptom onset [18, 40].
305 However, other studies indicate conflicting evidence on whether IgG and neutralizing antibody
306 levels persist or begin to decline in a high proportion of recovered subjects within 2-3 months
307 after infection [18]. Our study found that IgM positivity was lower than that of IgG after
308 infection [18, 38, 41, 42]. Minimal differences were also observed in the percentage of anti-S
309 protein and anti-RBD present in participants drawn at various times over a 3-month period.
310 Furthermore, anti-SARS-CoV-2 antibodies could be found in the circulation of some resolved
311 subjects 200 days post-symptom onset. Resolved subjects who were asymptomatic but RT-PCR-
312 positive, had the lowest titre of SARS-CoV-2 antibodies.

313 Our study used whole live SARS-CoV-2 viruses in the neutralization assay which was
314 able to determine the functional inhibitory capacity of antibodies against all antigens of SARS-
315 CoV-2. Neutralizing antibody titres have recently been shown to wane fairly rapidly in some
316 studies and levels were found to be variable in recovered subjects [19, 21, 43-45]. The U.S. Food
317 and Drug Administration (FDA) recommends that the titer of neutralizing antibodies in
318 convalescent plasma should be at least 1/160, but a 1/80 titer is acceptable in the absence of a
319 better match for use in convalescent plasma therapy [46]. Most resolved COVID-19 subjects
320 were found to have developed levels of SARS-CoV-2-specific neutralizing antibodies similar to
321 other cross-sectional studies [19, 44, 45]. Neutralizing SARS-CoV-2 antibodies correlated best
322 with a positive anti-RBD IgG ($r = 0.5157$) and anti-S protein IgG antibody ($r = 0.6010$) result.
323 However, at this time we do not know what relevant thresholds of neutralizing antibodies confer
324 protection from infection. Of interest, it has been shown that although Fc-dependent effector
325 functions are required for optimal protection, these are often mediated by non-neutralizing

326 antibodies [47]. Neutralization assays are performed with serum, and thus it is not possible to
327 define the relative contribution of each antibody class to neutralizing activity.

328 This study has limitations. Recall bias of dates and symptoms by the study participants
329 may affect the interpretation of timing of virus detection in relation to symptom onset. For
330 asymptomatic cases, the time when infection was acquired is not known. In conclusion, our
331 study suggests that there is a variable antibody response in resolved subjects and a variable
332 reduction in antibody positivity over time. The negative antibody results found in the SARS-
333 CoV-2 ELISA in RT-PCR-positive samples may suggest a varied immune response that warrants
334 further studies. Although serologic tests cannot be used as the primary diagnostic test, they may
335 be used to support diagnosis of COVID-19 for persons who are tested later, outside the optimal
336 RT-PCR window. The resolved subjects collected for this study are part of a larger longitudinal
337 study that will provide further insight on antibody prevalence over time. Further studies with this
338 longitudinal cohort will be critical in characterizing the nature and kinetics of SARS-CoV-2
339 antibodies and their ability to confer long-term immunity.

340

341 **Acknowledgements:**

342 We thank Erjona Kruja for technical assistance. Funding support for this work was provided by
343 grants from the Ontario Research Fund (ORF), COVID-19 Rapid Research Fund (#C-191-
344 2426729-NAZY) and by the Canadian Institute of Health Research (CIHR)-COVID-19
345 Immunity Task Force (CITF; #VR2-173204) awarded to Dr. Ishac Nazy, and Academic Health
346 Sciences Organization (HAHSO) grant awarded to Dr. Donald M. Arnold (#HAH-21-02). This
347 work was also supported, in part, by a Weston Family Microbiome Initiative Grant and a
348 Canadian Institute of Health Research (CIHR) COVID-19 Rapid Response grant to Dr. Matthew
349 S. Miller. Dr. Miller was also supported, in part, by a CIHR New Investigator Award and an
350 Ontario Early Researcher Award. Ali Zhang is supported by a PSI Research Trainee Fellowship
351 and a CIHR Canada Graduate Scholarships – Doctoral Award. Hannah D. Stacey was supported
352 in part by an Ontario Graduate Scholarship.

353 **Cell Lines:**

354 SARS-CoV-2/SB3-TYAGNC strain information: [https://wwwnc.cdc.gov/eid/article/26/9/20-](https://wwwnc.cdc.gov/eid/article/26/9/20-1495_article)
355 [1495 article](https://wwwnc.cdc.gov/eid/article/26/9/20-1495_article)

356 **Authorship Contributions:**

357 AH carried out the described studies, analyzed data, and wrote the manuscript. DMA designed
358 the research and helped write the manuscript. JWS and AZ carried out the described studies,
359 analyzed data, and wrote the manuscript. JCM assisted with experimentation, provided technical
360 assistance, and helped write the manuscript. VTC provided technical assistance. HDS and JCA
361 provided technical assistance and materials. ZC, BJH, RC, NI, DMEB, MSM, and JGK designed

362 the research and helped write the manuscript. IN designed the research, interpreted data and
363 wrote the manuscript. All authors reviewed and approved the final version of the manuscript.

364

365 **Disclosure of Conflicts of Interest:**

366 The authors declare no competing financial interests.

367 **Figures and Tables:**

368 **Table 1: *Clinical Characteristics of Study Participants***

	Pre-COVID-19 controls (n = 520)	Resolved COVID-19 subjects (n = 153)	RT-PCR- negative subjects (n = 55)
Ages (years)	-	18 to 82 (median=49)	20 to 89 (median=49)
Gender			
Male (%)	-	58 (37.9)	16 (29.1)
Female (%)	-	95 (62.1)	39 (70.9)
Hospitalization Status			
Never hospitalized (%)	-	145 (94.8)	55 (100)
Hospitalized (%)	-	8 (5.2)	0
Sample Collection Dates			
	-	May 2020 – November 2020	
SARS-CoV-2 RT-PCR positivity			
Positive	-	153	0
Negative	-	0	55
Presence of symptoms			

Symptomatic (%)	-	142 (92.8)	37 (67.3)
Asymptomatic (%)	-	11 (7.2)	18 (32.7)
Days post-symptom onset at collection (days)	-	19 – 227 (median=130.5)	7 – 260 (median=141.5)

369

370

371 **Table 2: Cross-sectional analysis of RT-PCR and SARS-CoV-2 Antibody Testing**

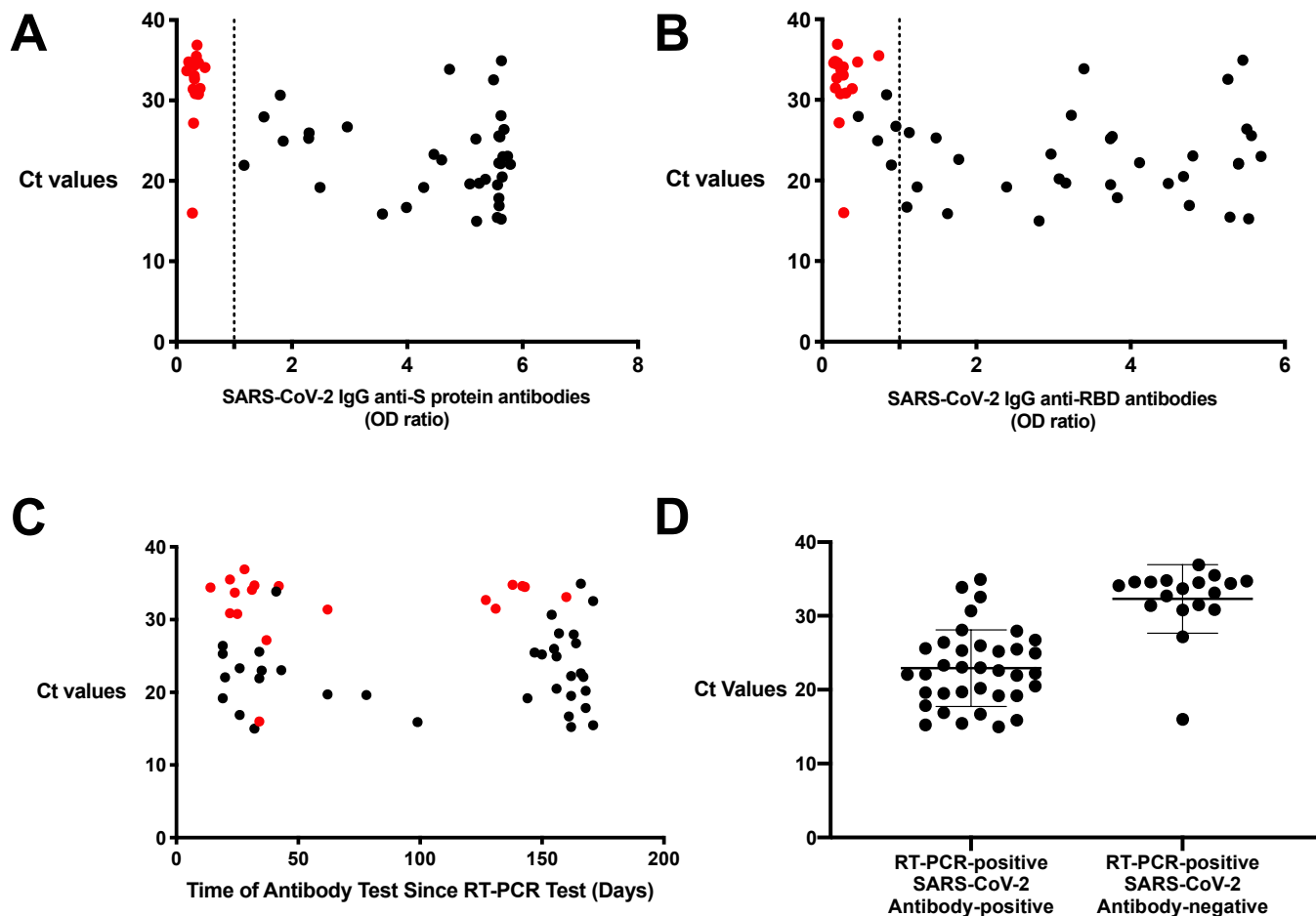
	RT-PCR-positive	RT-PCR-negative
	(Resolved, n=153)	(n=55)
SARS-CoV-2	131/153	3/55
Antibody positive (%)	85.6	5.5
SARS-CoV-2	22/153	52/55
Antibody negative (%)	14.4	94.5

372

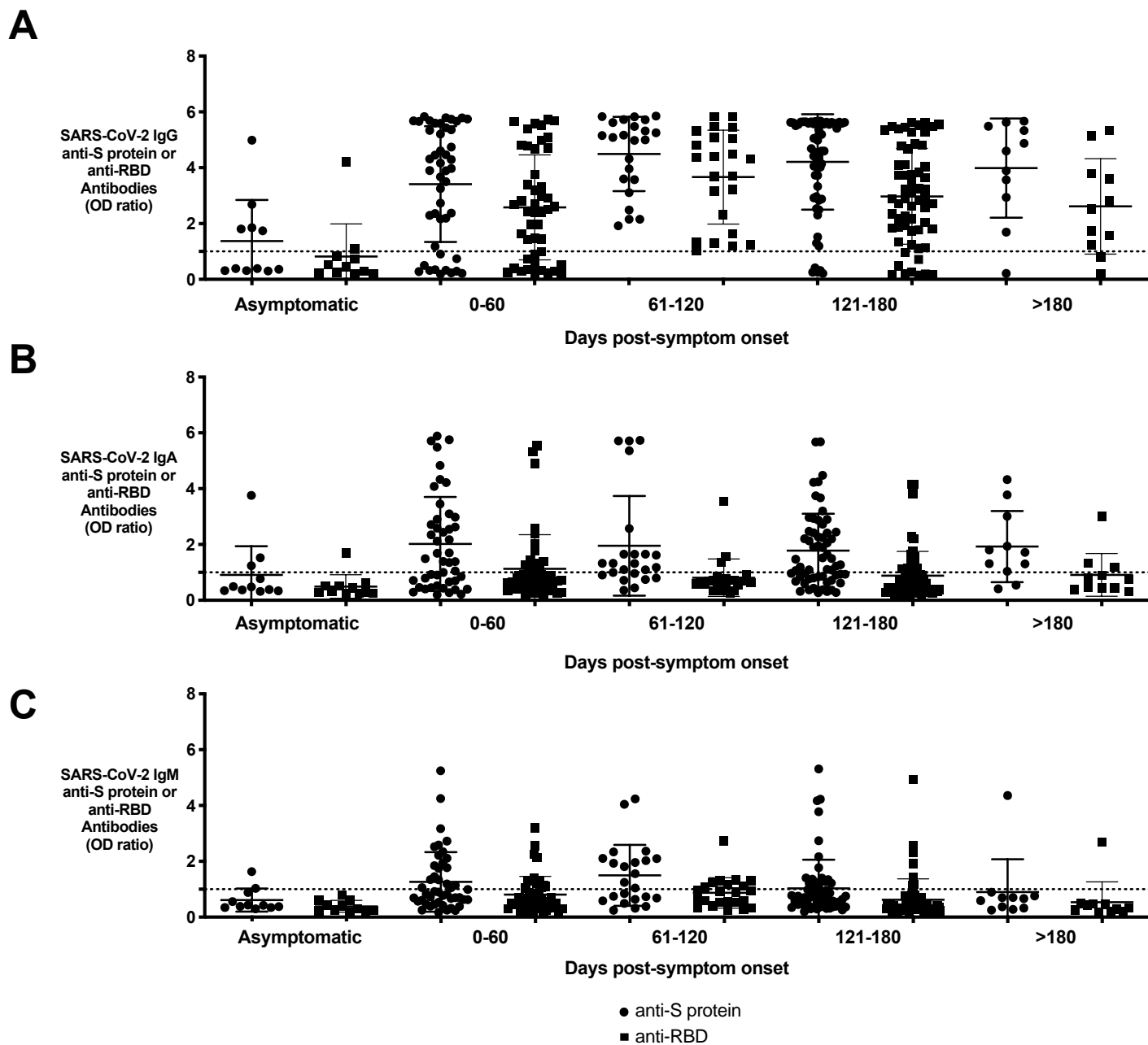
373

374

375



377 **Figure 1: Ct values are variable in resolved subjects who test SARS-CoV-2 antibody negative or**
 378 **positive.** Ct values of a subset of resolved subjects (n=54) were compared to their corresponding
 379 SARS-CoV-2 (A) anti-S protein IgG and (B) anti-RBD IgG. (C) Ct values were then compared to
 380 the subjects' respective time since initial RT-PCR test. (D) Ct values for RT-PCR-positive in
 381 antibody-positive and antibody-negative were compared. Values are shown as a ratio of observed
 382 optical density to the determined assay cut-off optical density or time since RT-PCR test until
 383 blood donation compared to absolute Ct values. Red circles indicate resolved samples who were
 384 RT-PCR-positive/antibody-negative.

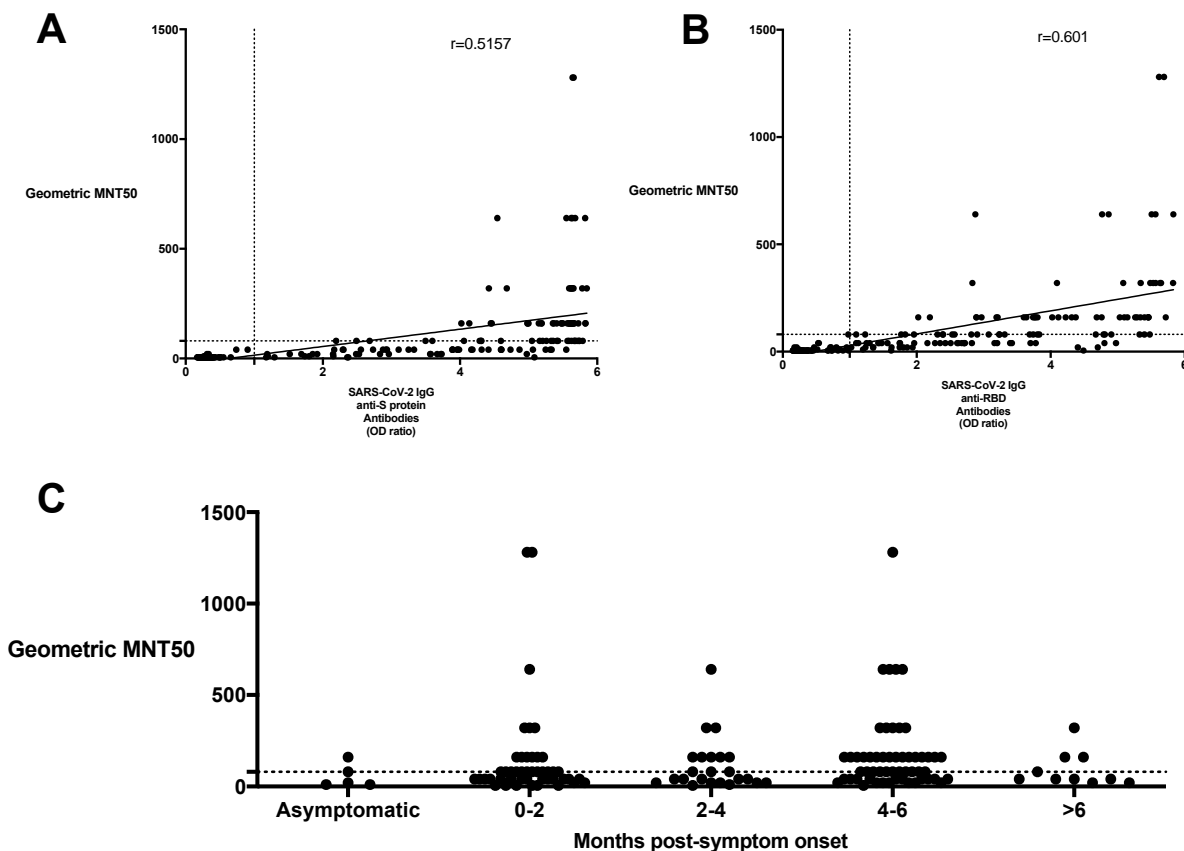


386 **Figure 2: Persistence of SARS-CoV-2 antibodies in resolved subjects based on time of blood**
387 **collection post-symptom onset.** Resolved subjects (n=153) were grouped based on days post-
388 symptom onset showing levels of (A) anti-S protein and anti-RBD IgG, (B) IgA, and (C) IgM
389 displayed as dot plots. Days post-symptom onset are binned in 60-day increments and are
390 compared to asymptomatic resolved subjects. Circles represent anti-S protein antibodies and

391 squares represent anti-RBD antibodies. Anti-S protein IgG was found in all resolved participants
392 collected between 60 and 120 days (23 of 153 total resolved subjects). In the resolved patients
393 collected between 120 and 180 days from symptom onset, there was a decrease in the percentage
394 of antibody-positive samples when compared to the previous time bin (55 of 60 samples, 91.7%).

395

396



397

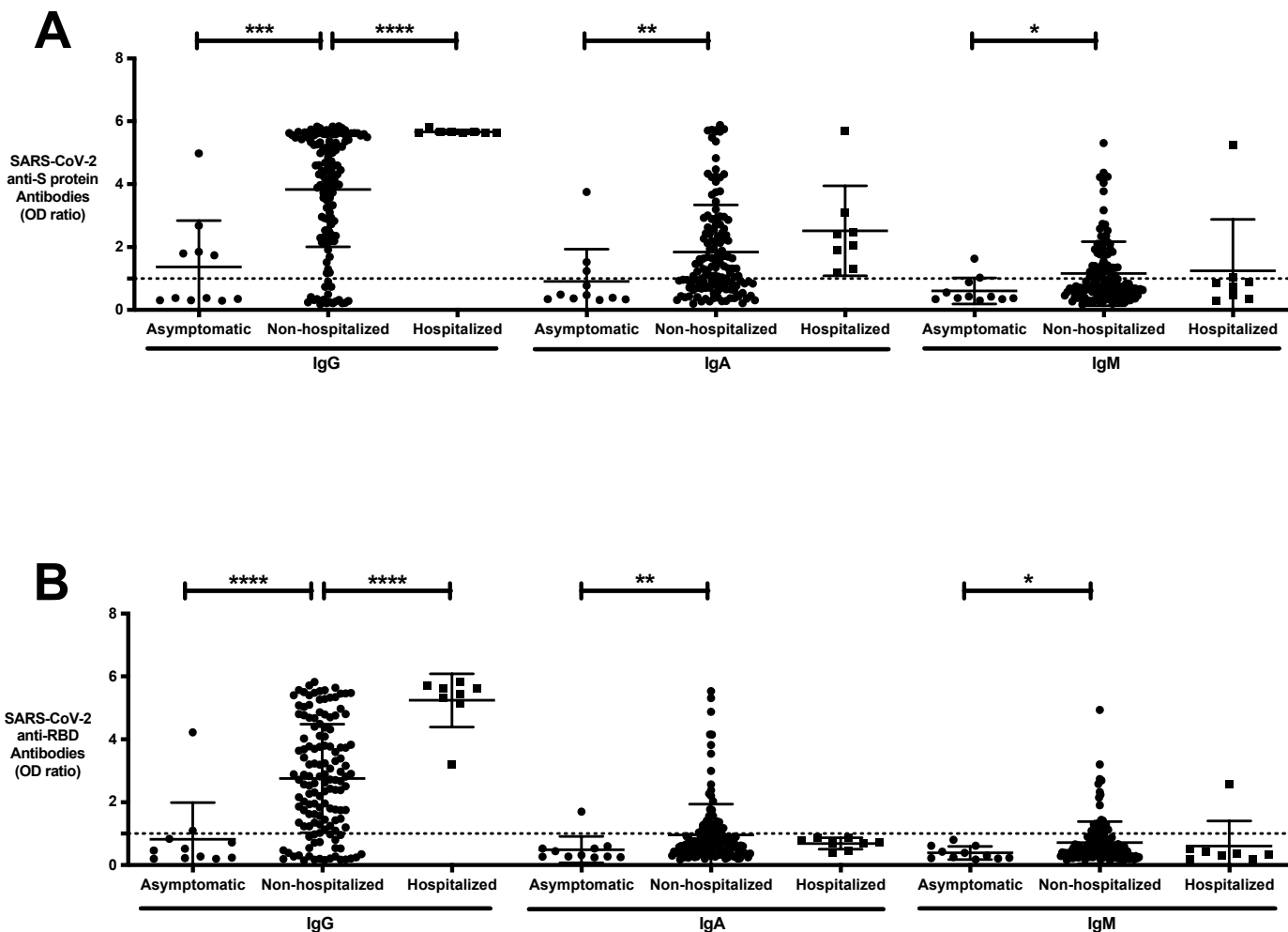
Level of	Asymptomatic	Non-hospitalized	Hospitalized
Neutralization	(n=11)	(n=134)	(n=8)
Undetectable	6/11 (54.5%)	20/134 (14.9%)	0
Below Suggested FDA Level	3/11 (27.3%)	50/134 (37.3%)	0
Above Suggested FDA Level	2/11 (18.2%)	64/134 (47.8%)	8/8 (100%)

398

399 **Figure 3: Neutralizing SARS-CoV-2 antibodies against S protein and RBD in IgG, IgA, and**
400 ***IgM found in variable levels in resolved and RT-PCR-negative study participants.*** Neutralizing
401 SARS-CoV-2 antibody titers from resolved subjects (n=153) were measured in the
402 microneutralization assay and compared to (A) anti-S protein and (B) anti-RBD IgG antibody
403 levels as measured in the SARS-CoV-2 ELISA. Neutralizing antibody titers are expressed as
404 geometric MNT50 values (y-axis). ELISA values are shown as a ratio of observed optical density
405 to the determined assay cut-off optical density (x-axis). (C) Neutralizing SARS-CoV-2 antibody
406 titers from resolved subjects (n=153) were measured in the microneutralization assay were
407 compared to their days since symptom onset. Values above 1 ratio are considered positive in the
408 SARS-CoV-2 ELISA.

409

410



412 **Figure 4: Comparing anti-SARS-CoV-2 IgG, IgA, and IgM responses to S protein and RBD**
413 **antigens in asymptomatic, non-hospitalized and hospitalized resolved subjects.** (A) Anti-S
414 protein IgG, IgA, IgM and (B) anti-RBD IgG, IgA, and IgM of the asymptomatic (n=11), non-
415 hospitalized resolved subjects (n=134) and hospitalized resolved subjects (n=8) were profiled
416 using the SARS-CoV-2 ELISA. Values are shown as a ratio of observed optical density to the
417 determined assay cut-off optical density. All hospitalized subjects had detectable anti-S protein
418 IgG, anti-RBD IgG and anti-S protein IgA antibodies in their serum. The levels of anti-S protein
419 and anti-RBD IgG (mean OD₄₀₅ ratio) in resolved subjects who were hospitalized were

420 significantly higher than the non-hospitalized resolved population. Values above 1 ratio are
421 considered positive in the SARS-CoV-2 ELISA. * $p < 0.05$, ** $p < 0.01$, *** $p < 0.001$, **** $p < 0.0005$.
422

423 **References:**

- 424 1. Zhou P, Yang XL, Wang XG, et al. A pneumonia outbreak associated with a new coronavirus
425 of probable bat origin. *Nature* **2020**; 579:270-3.
- 426 2. He X, Lau EHY, Wu P, et al. Temporal dynamics in viral shedding and transmissibility of
427 COVID-19. *Nat Med* **2020**; 26:672-5.
- 428 3. Anderson RM, Heesterbeek H, Klinkenberg D, Hollingsworth TD. How will country-based
429 mitigation measures influence the course of the COVID-19 epidemic? *The Lancet* **2020**;
430 395:931-4.
- 431 4. Mizumoto K, Kagaya K, Zarebski A, Chowell G. Estimating the asymptomatic proportion of
432 coronavirus disease 2019 (COVID-19) cases on board the Diamond Princess cruise ship,
433 Yokohama, Japan, 2020. *Euro Surveill* **2020**; 25.
- 434 5. Gudbjartsson DF, Helgason A, Jonsson H, et al. Spread of SARS-CoV-2 in the Icelandic
435 Population. *N Engl J Med* **2020**; 382:2302-15.
- 436 6. Tabata S, Imai K, Kawano S, et al. Clinical characteristics of COVID-19 in 104 people with
437 SARS-CoV-2 infection on the Diamond Princess cruise ship: a retrospective analysis. *The*
438 *Lancet Infectious Diseases* **2020**.
- 439 7. Verity R, Okell LC, Dorigatti I, et al. Estimates of the severity of coronavirus disease 2019: a
440 model-based analysis. *The Lancet Infectious Diseases* **2020**; 20:669-77.
- 441 8. He JL, Luo L, Luo ZD, et al. Diagnostic performance between CT and initial real-time RT-
442 PCR for clinically suspected 2019 coronavirus disease (COVID-19) patients outside Wuhan,
443 China. *Respir Med* **2020**; 168:105980.
- 444 9. Sethuraman N, Jeremiah SS, Ryo A. Interpreting Diagnostic Tests for SARS-CoV-2. *JAMA*
445 **2020**.

- 446 10. Chu DKW, Pan Y, Cheng SMS, et al. Molecular Diagnosis of a Novel Coronavirus (2019-
447 nCoV) Causing an Outbreak of Pneumonia. *Clin Chem* **2020**; 66:549-55.
- 448 11. Corman VM, Landt O, Kaiser M, et al. Detection of 2019 novel coronavirus (2019-nCoV) by
449 real-time RT-PCR. *Euro Surveill* **2020**; 25.
- 450 12. Letko M, Marzi A, Munster V. Functional assessment of cell entry and receptor usage for
451 SARS-CoV-2 and other lineage B betacoronaviruses. *Nat Microbiol* **2020**; 5:562-9.
- 452 13. Wrapp D, Wang N, Corbett KS, et al. Cryo-EM structure of the 2019-nCoV spike in the
453 prefusion conformation. *Science* **2020**; 367:1260-3.
- 454 14. Walls AC, Park YJ, Tortorici MA, Wall A, McGuire AT, Veesler D. Structure, Function, and
455 Antigenicity of the SARS-CoV-2 Spike Glycoprotein. *Cell* **2020**; 181:281-92 e6.
- 456 15. Berry JD, Hay K, Rini JM, et al. Neutralizing epitopes of the SARS-CoV S-protein cluster
457 independent of repertoire, antigen structure or mAb technology. *MAbs* **2010**; 2:53-66.
- 458 16. Amanat F, Stadlbauer D, Strohmeier S, et al. A serological assay to detect SARS-CoV-2
459 seroconversion in humans. *Nat Med* **2020**.
- 460 17. Gorse GJ, Donovan MM, Patel GB. Antibodies to coronaviruses are higher in older
461 compared with younger adults and binding antibodies are more sensitive than neutralizing
462 antibodies in identifying coronavirus-associated illnesses. *J Med Virol* **2020**; 92:512-7.
- 463 18. Long QX, Liu BZ, Deng HJ, et al. Antibody responses to SARS-CoV-2 in patients with
464 COVID-19. *Nat Med* **2020**; 26:845-8.
- 465 19. Luchsinger LL, Ransegnola BP, Jin DK, et al. Serological Assays Estimate Highly Variable
466 SARS-CoV-2 Neutralizing Antibody Activity in Recovered COVID-19 Patients. *J Clin*
467 *Microbiol* **2020**; 58.

- 468 20. Okba NMA, Muller MA, Li W, et al. Severe Acute Respiratory Syndrome Coronavirus 2-
469 Specific Antibody Responses in Coronavirus Disease Patients. *Emerg Infect Dis* **2020**; 26:1478-
470 88.
- 471 21. Prevost J, Gasser R, Beaudoin-Bussieres G, et al. Cross-Sectional Evaluation of Humoral
472 Responses against SARS-CoV-2 Spike. *Cell Rep Med* **2020**; 1:100126.
- 473 22. Zhao J, Yuan Q, Wang H, et al. Antibody responses to SARS-CoV-2 in patients of novel
474 coronavirus disease 2019. *Clin Infect Dis* **2020**.
- 475 23. Roost HP, Bachmann MF, Haag A, et al. Early high-affinity neutralizing anti-viral IgG
476 responses without further overall improvements of affinity. *Proc Natl Acad Sci U S A* **1995**;
477 92:1257-61.
- 478 24. Chen Z, Zhang L, Qin C, et al. Recombinant modified vaccinia virus Ankara expressing the
479 spike glycoprotein of severe acute respiratory syndrome coronavirus induces protective
480 neutralizing antibodies primarily targeting the receptor binding region. *J Virol* **2005**; 79:2678-88.
- 481 25. Stadlbauer D, Amanat F, Chromikova V, et al. SARS-CoV-2 Seroconversion in Humans: A
482 Detailed Protocol for a Serological Assay, Antigen Production, and Test Setup. *Curr Protoc*
483 *Microbiol* **2020**; 57:e100.
- 484 26. Seow J, Graham C, Merrick B, et al. Longitudinal observation and decline of neutralizing
485 antibody responses in the three months following SARS-CoV-2 infection in humans. *Nat*
486 *Microbiol* **2020**; 5:1598-607.
- 487 27. Chen X, Pan Z, Yue S, et al. Disease severity dictates SARS-CoV-2-specific neutralizing
488 antibody responses in COVID-19. *Signal Transduct Target Ther* **2020**; 5:180.

- 489 28. Peng Y, Mentzer AJ, Liu G, et al. Broad and strong memory CD4(+) and CD8(+) T cells
490 induced by SARS-CoV-2 in UK convalescent individuals following COVID-19. *Nat Immunol*
491 **2020**; 21:1336-45.
- 492 29. Le Bert N, Tan AT, Kunasegaran K, et al. SARS-CoV-2-specific T cell immunity in cases of
493 COVID-19 and SARS, and uninfected controls. *Nature* **2020**; 584:457-62.
- 494 30. Grifoni A, Weiskopf D, Ramirez SI, et al. Targets of T Cell Responses to SARS-CoV-2
495 Coronavirus in Humans with COVID-19 Disease and Unexposed Individuals. *Cell* **2020**;
496 181:1489-501 e15.
- 497 31. Schultheiss C, Paschold L, Simnica D, et al. Next-Generation Sequencing of T and B Cell
498 Receptor Repertoires from COVID-19 Patients Showed Signatures Associated with Severity of
499 Disease. *Immunity* **2020**; 53:442-55 e4.
- 500 32. Marklund E, Leach S, Axelsson H, et al. Serum-IgG responses to SARS-CoV-2 after mild
501 and severe COVID-19 infection and analysis of IgG non-responders. *PLoS One* **2020**;
502 15:e0241104.
- 503 33. Zhao J, Zhao J, Mangalam AK, et al. Airway Memory CD4(+) T Cells Mediate Protective
504 Immunity against Emerging Respiratory Coronaviruses. *Immunity* **2016**; 44:1379-91.
- 505 34. Singanayagam A, Patel M, Charlett A, et al. Duration of infectiousness and correlation with
506 RT-PCR cycle threshold values in cases of COVID-19, England, January to May 2020. *Euro*
507 *Surveill* **2020**; 25.
- 508 35. La Scola B, Le Bideau M, Andreani J, et al. Viral RNA load as determined by cell culture as
509 a management tool for discharge of SARS-CoV-2 patients from infectious disease wards. *Eur J*
510 *Clin Microbiol Infect Dis* **2020**; 39:1059-61.

- 511 36. Gniazdowski V, Morris CP, Wohl S, et al. Repeat COVID-19 Molecular Testing: Correlation
512 of SARS-CoV-2 Culture with Molecular Assays and Cycle Thresholds. *Clin Infect Dis* **2020**.
- 513 37. Veyrenche N, Bollore K, Pisoni A, et al. **2020**.
- 514 38. Adams ER, Ainsworth M, Anand R, et al. Antibody testing for COVID-19: A report from
515 the National COVID Scientific Advisory Panel. *Wellcome Open Research* **2020**; 5.
- 516 39. Hicks J, Klumpp-Thomas C, Kalish H, et al. Serologic cross-reactivity of SARS-CoV-2 with
517 endemic and seasonal Betacoronaviruses. *medRxiv* **2020**.
- 518 40. Duan K, Liu B, Li C, et al. Effectiveness of convalescent plasma therapy in severe COVID-
519 19 patients. *Proc Natl Acad Sci U S A* **2020**; 117:9490-6.
- 520 41. Gao HX, Li YN, Xu ZG, et al. Detection of serum immunoglobulin M and immunoglobulin
521 G antibodies in 2019 novel coronavirus infected patients from different stages. *Chin Med J*
522 (Engl) **2020**; 133:1479-80.
- 523 42. Pérez-García F, Pérez-Tanoira R, Romanyk J, Arroyo T, Gómez-Herruz P, Cuadros-
524 González J. **2020**.
- 525 43. Lee WT, Girardin RC, Dupuis Ii AP, et al. Neutralizing Antibody Responses in COVID-19
526 Convalescent Sera. *J Infect Dis* **2020**.
- 527 44. Wu F, Liu M, Wang A, et al. Evaluating the Association of Clinical Characteristics With
528 Neutralizing Antibody Levels in Patients Who Have Recovered From Mild COVID-19 in
529 Shanghai, China. *JAMA Intern Med* **2020**; 180:1356-62.
- 530 45. Muecksch F, Wise H, Batchelor B, et al. Longitudinal analysis of clinical serology assay
531 performance and neutralising antibody levels in COVID19 convalescents. *medRxiv* **2020**.
- 532 46. (FDA) USFaDA. Investigational COVID-19 Convalescent Plasma. Guidance for Industry
533 **2020**.

534 47. Winkler ES, Gilchuk P, Yu J, et al. Human neutralizing antibodies against SARS-CoV-2
535 require intact Fc effector functions for optimal therapeutic protection. *Cell* **2021**.
536