

1 **Main Title:** Lewis Blood Group Antigens are Associated with Altered Susceptibility to Shigellosis

2  
3 **Short Title:** Lewis Antigens and Shigellosis Susceptibility

4  
5 **Authors:** Jhansi L. Leslie<sup>1</sup>, Erin Weddle<sup>2</sup>, Lauren K. Yum<sup>2</sup>, Ye Lin<sup>3</sup>, Matthew L. Jenior<sup>4</sup>,  
6 Benjamin Lee<sup>5</sup>, Jennie Z. Ma<sup>6</sup>, Beth D. Kirkpatrick<sup>7</sup>, Uma Nayak<sup>8</sup>, James A. Platts-Mills<sup>1</sup>, Herve  
7 F. Agaisse<sup>2</sup>, Rashidul Haque<sup>9</sup>, William A. Petri Jr.<sup>1\*</sup>

8  
9 <sup>1</sup> Department of Medicine, Division of International Health and Infectious Diseases, University  
10 of Virginia School of Medicine, Charlottesville, VA, USA

11 <sup>2</sup> Department of Microbiology, Immunology, and Cancer Biology, University of Virginia School  
12 of Medicine, Charlottesville, VA, USA.

13 <sup>3</sup> Department of Statistics, University of Virginia, Charlottesville, VA, USA.

14 <sup>4</sup> Department of Biomedical Engineering, University of Virginia School of Medicine and School  
15 of Engineering, Charlottesville, VA, USA

16 <sup>5</sup> Vaccine Testing Center and Department of Pediatrics, The University of Vermont College of  
17 Medicine, Burlington, VT, USA.

18 <sup>6</sup> Department of Public Health Sciences, University of Virginia School of Medicine,  
19 Charlottesville, VA, USA.

20 <sup>7</sup> Department of Medicine and Vaccine Testing Center, The University of Vermont College of  
21 Medicine, Burlington, VT

22 <sup>8</sup> Center for Public Health Genomics and Department of Public Health Sciences, University of  
23 Virginia School of Medicine, Charlottesville, VA, USA.

24 <sup>9</sup> International Centre for Diarrhoeal Disease Research, Bangladesh, Dhaka

25 \* Corresponding author

26  
27 Address of Corresponding author:

28 William A. Petri Jr., MD, PhD

29 Division of Infectious Diseases

30 345 Crispell Drive, MR-6 1st floor, Room 1709

31 Charlottesville, VA 22908

32 Telephone: [434-924-5621](tel:434-924-5621)

33 Fax: 434-924-0075

34 Email: [wap3g@virginia.edu](mailto:wap3g@virginia.edu)

35  
36 **Word Count:**

37 Abstract (47)

38 Main text (1500)

39  
40 **Author Contributions:**

41 JLL, with help from EW, LKY, and HFA carried out the *in vitro* experiments. JLL, MLJ, YL,  
42 JAPM, and JZM analyzed the clinical data. RH founded the birth cohort and directed all work in  
43 Bangladesh. JLL, BL, HFA, JAPM, BDK, RH, and WAP conceived the concept. UN curated and  
44 maintained the clinical data. JLL wrote the manuscript with input from WAP, HFA, JZM and  
45 MJL. All authors had access to the draft.

46  
47 **Keywords:** Blood-group Antigens, Lewis Antigens, Shigellosis

48 **Abstract**

49 In a cohort of infants, we found that lack of the Lewis histo-blood group antigen was associated  
50 with increased susceptibility to shigellosis. Broadly inhibiting fucosylation in epithelial cells *in*  
51 *vitro* decreased invasion by *Shigella flexneri*. These results support a role for fucosylated  
52 glycans in susceptibility to shigellosis.

53

54

55 **Introduction:**

56 Gram-negative bacteria belonging to the genus *Shigella* are the third leading cause of  
57 diarrhea-associated deaths in children under the age of five [1]. The primary treatment for  
58 shigellosis is antibiotics, however, globally the incidence of resistance to these drugs is  
59 increasing. Additionally, despite the burden of *Shigella* spp. on global health, there are currently  
60 no commercially licensed vaccines. Identifying host factors that alter susceptibility to *Shigella*  
61 spp. is an important first step in devising novel strategies to protect from this infection.

62 Blood group antigens are a polymorphic trait that is associated with altered susceptibility  
63 to numerous infectious agents including bacteria such as *Helicobacter pylori* and  
64 *Campylobacter jejuni*, and viruses [2]. The Lewis blood group antigens are highly expressed in  
65 the gastrointestinal tissues making them a plausible target for mucosal pathogens like *Shigella*  
66 spp. Lewis antigens are generated via the action of two fucosyltransferases, FUT2/Secretor  
67 ( $\alpha$ 1,2-fucosyltransferase) and FUT3/Lewis ( $\alpha$ 1, 3/4-fucosyltransferase) [2]. FUT2 modifies a  
68 precursor Type 1 oligosaccharide to make the H-antigen, after which FUT3 adds a second  
69 fucose to produce the Lewis B antigen. Individuals expressing both enzymes will primarily have  
70 Lewis B antigens. While individuals negative for FUT2/Secretor will only express Lewis A  
71 antigen. If an individual is FUT3/Lewis negative they will produce neither the Lewis A nor Lewis  
72 B glycans.

73 In a cohort of Bangladeshi infants, we sought to determine if the Lewis histo-blood group  
74 antigens were associated with altered susceptibility to shigellosis in the first year of life. We

75 found significant differences in the survival probability free from diarrhea associated with  
76 *Shigella* spp. within the first year of life based on inferred Lewis/Secretor genotypes. Using an *in*  
77 *vitro* assay, we showed that broadly inhibiting fucosylation on epithelial cells decreases invasion  
78 by *Shigella flexneri*. Together these data suggest a role for fucosylated blood group antigens in  
79 susceptibility to shigellosis.

## 80 **Methods**

81 **Study Population.** We performed a sub-study analysis from the Performance of Rotavirus and  
82 Oral Polio Vaccines in Developing Countries (PROVIDE) cohort. The cohort and study design  
83 have been previously described [3]. Briefly, 700 infants born in urban Dhaka, Bangladesh were  
84 enrolled within the first 7 days of life. During the study, diarrheal episodes were monitored and  
85 fecal samples were collected. DNA extracted from the diarrheal fecal samples were used to  
86 detect common enteric pathogens using a custom developed TaqMan array cards as described  
87 previously [4]. We identified infants with a complete 1-year follow-up, that were successfully  
88 phenotyped for Lewis antigens. To exclude subclinical infections, *Shigella* positivity was  
89 determined by attributable fraction based on pathogen quantity as previously described [5]. All  
90 families participating in the study were consented. PROVIDE was approved by the ethical  
91 review boards of the International Center for Diarrhoeal Disease Research, Bangladesh, The  
92 University of Virginia, and the University of Vermont. The trial was registered at  
93 ClinicalTrials.gov ([NCT01375647](https://clinicaltrials.gov/ct2/show/study/NCT01375647)).

94 **Secretor Status and Lewis Antigen Phenotyping.** Lewis and secretor status were inferred  
95 from LeA and LeB antigen phenotyping of stored saliva specimens using a dot-blot assay as  
96 previously described [6].

97 ***In vitro S. flexneri* Infections.** *S. flexneri* infections were performed as previously described [7]  
98 with following modifications. HT-29 cell lines stably expressing yellow fluorescent protein (YFP)  
99 membrane marker were maintained in McCoy's 5A Medium (Gibco) with 10% heat-inactivated  
100 fetal bovine serum (Invitrogen). Four days before infection, cells were added to a 96-well cell

101 culture treated plate (Corning). The following day, the medium was replaced with medium  
102 supplemented with 250 $\mu$ M 2F-peracetyl-fucose, a cell-permeable inhibitor of fucosyltransferases  
103 (2F-PAF, Millipore Sigma), or vehicle (DMSO) [8]. Drug (or vehicle) supplemented medium was  
104 replaced each day thereafter, for a total of three days of treatment. Effect of the drug was  
105 evaluated by flow cytometry as previously described [8], also see supplemental methods. On  
106 the day of infection, the medium was replaced with fresh medium without drug. Cells were  
107 infected using a frozen stock made from exponential phase *S. flexneri* serotype 2a 2457T  
108 expressing CFP under a  $\beta$ -D thiogalactopyranoside (IPTG)-inducible promoter. Maintenance of  
109 virulence plasmid was confirmed by presence of red colonies on plates containing Congo Red.  
110 Infection was started by centrifuging the plate for 5 min at 1000 rpm and internalization of the  
111 bacteria was allowed to progress for 1 hour before IPTG (10mM final concentration) and  
112 gentamicin (50 $\mu$ M) were added to the plate to induce expression of CFP and kill the remaining  
113 extracellular bacteria, respectively. Intracellular infection proceeded for another 7 hours at which  
114 point cells were fixed with 4% paraformaldehyde and the plates were imaged using the  
115 ImageXpress Micro imaging system (Molecular Devices). The number of infection foci per well  
116 were manually counted, while infection foci area (size) was measured with ImageXpress  
117 imaging software [9].

118 **Statistical Analysis.** Statistical analysis was performed in R version 3.6.3 using standard  
119 downloadable packages. Kaplan–Meier (KM) method was used to estimate the probability free  
120 from the first *Shigella* attributable diarrheal episode and KM survival plots were generated using  
121 the packages survminer, survival, and survMisc. The log-rank test was used to compare the KM  
122 survival curves between Lewis and Secretor groups. The Cox proportional hazards model was  
123 used to evaluate the risks of *Shigella* attributable diarrhea among Lewis and Secretor groups. A  
124 two-tailed Mann–Whitney U non-parametric test was used to compare foci number and area  
125 between treatment groups. Data were graphed using the package ggpubR.

126 **Results**

127 To determine if Lewis or Secretor status is associated with altered susceptibility to shigellosis,  
128 we performed a Kaplan-Meier survival analysis. Infants that did not have a diarrheal episode  
129 attributable to *Shigella* spp. were censored at one year of age. In this analysis, we found that  
130 Lewis histo-blood group status was significantly associated with decreased probability of  
131 shigellosis free survival in the first year of life ( $P<0.01$ ), and Le-/Se+ infants were more likely to  
132 suffer such illness with a significantly increased hazard ratio of 2.4 (95% CI: 1.4 – 4.2,  $P=0.001$ )  
133 compared to Le+/Se+ infants (figure 1A & Supplemental figure1).

134 To test the biological plausibility of this finding, we asked if inhibition of fucosylation in  
135 human colonic epithelial cells altered *S. flexneri* infection and/or dissemination. To do this, we  
136 utilized a cell-permeable fluorinated fucose derivate 2F-peracetyl-fucose (2F-PAF). Following  
137 uptake and metabolism of 2F-PAF into a GDP-fucose memetic, the metabolite broadly inhibits  
138 cellular fucosyltransferases. As previously established, treatment of HT-29 cells with 2F-PAF  
139 resulted in decreased levels of the fucosylated glycans Lewis A, Lewis B, as well as the Lewis B  
140 precursor H-antigen compared to vehicle treated cells (Supplemental figure 2A ) [8]. The drug  
141 treatment did not alter viability of cells (Supplemental figure 2B). Infection of 2F-PAF treated  
142 colonic epithelial cells resulted in significantly decreased numbers of infection foci per well  
143 relative to vehicle control (Figure 1B). However, median infection foci area was not significantly  
144 different between the treatments (Figure 1C). Together these results suggest that inhibition of  
145 fucosyltransferases in colonic epithelial cells decreases *S. flexneri* invasion but does not impact  
146 cell-to-cell spread.

147 **Discussion**

148 In this study, we found that Lewis negative status was associated with increased  
149 susceptibility to shigellosis in Bangladeshi infants in their first year of life. This discovery of the  
150 role of fucosylation in susceptibility enriches our understanding of shigella pathogenesis and

151 may provide new avenues towards the prevention or treatment of this antimicrobial resistant  
152 bacterium.

153 We demonstrated that inhibition of fucosyltransferases in colonic epithelial cells decreases  
154 *S. flexneri* invasion without impacting dissemination. The results of our *in vitro* assay were  
155 surprising at first, as one might predict that decreasing fucosylation would mimic the phenotype  
156 of the susceptible Lewis-negative infants, resulting in an increase in invasion rather than the  
157 observed decrease. However, since the inhibitor used blocks many fucosyltransferases it is  
158 possible that our data points to a complex role for other fucosylated glycans in mediating *S.*  
159 *flexneri* invasion of the colonic epithelium. Other groups have found that *S. flexneri* adheres to  
160 epithelial cells via glycan-glycan interaction between bacterial LPS and host-cell ABO blood  
161 group antigens (which are also fucosylated) in addition to Lewis-antigens [10].

162 A limitation of the study is that the children were infected with multiple other  
163 enteropathogens in addition to *Shigella*. However, the use of attributable fraction rather than  
164 solely PCR positivity helped to ascribe a diarrheal infection as shigellosis [5]. An additional  
165 limitation was that our detection method targeted the virulence factor *ipaH* which is present in all  
166 four species of *Shigella* as well enteroinvasive *E. coli*. *S. flexneri* is one of the most common  
167 causes of shigellosis in the region of Bangladesh our cohort was from, thus we used *S. flexneri*  
168 for our *in vitro* assays [11].

169 In addition to bacteria-epithelial cell interactions during infection, Lewis antigens impact  
170 neutrophil binding and transepithelial migration [12]. Neutrophil influx is a hallmark of  
171 shigellosis, and neutrophils are critical for control of the pathogen [13-15]. While we only tested  
172 the effect of fucosylated glycans on *S. flexneri* invasion and dissemination in tissue culture  
173 epithelial cells, it is possible that Lewis blood group antigens additionally alter susceptibility to *S.*  
174 *flexneri* via their ability to facilitate recruitment of leukocytes *in vivo*. Together the data we  
175 present supports the concept that fucosylated glycans play a role in susceptibility to shigellosis.

176

177 **Notes:**

178

179 **Funding:**

180 This study was supported by funding from the Bill and Melinda Gates Foundation and

181 R01AI43596 (WAP) as well as T32AI007496 (JLL).

182 **Author disclosures:**

183 Dr. Ma reports grants from The Bill and Melinda Gates Foundation during the conduct of the

184 study. Dr. Lee reports grants from Bill and Melinda Gates Foundation, during the conduct of the

185 study. Dr. Agaisse has nothing to disclose. Dr. Kirkpatrick has nothing to disclose. Dr. Platts-

186 Mills has nothing to disclose. Dr. Nayak reports grants from Bill and Melinda Gates Foundation,

187 during the conduct of the study. Dr. Petri has nothing to disclose. Erin Weddle has nothing to

188 disclose. Dr. Jenior has nothing to disclose. Dr. Leslie has nothing to disclose. Dr. Yum has

189 nothing to disclose. Dr. Haque has nothing to disclose. Dr. Lin has nothing to disclose.

190 **References**

191 1. Kotloff KL. *Shigella* infection in children and adults: a formidable foe. *Lancet Glob Health*.  
192 2017; 5:e1166–e1167.

193 2. Cooling L. Blood Groups in Infection and Host Susceptibility. *Clin Microbiol Rev* 2015;  
194 28:801–870.

195 3. Kirkpatrick BD, Colgate ER, Mychaleckyj JC, et al. The ‘Performance of Rotavirus and Oral  
196 Polio Vaccines in Developing Countries’ (PROVIDE) study: description of methods of an  
197 interventional study designed to explore complex biologic problems. *Am J Trop Med Hyg*  
198 2015; 92:744–751.

199 4. Taniuchi M, Platts-Mills JA, Begum S, et al. Impact of enterovirus and other enteric  
200 pathogens on oral polio and rotavirus vaccine performance in Bangladeshi infants. *Vaccine*  
201 2016; 34:3068–3075.

202 5. Schnee AE, Haque R, Taniuchi M, et al. Identification of Etiology-Specific Diarrhea  
203 Associated With Linear Growth Faltering in Bangladeshi Infants. *Am J Epidemiol*.  
204 2018;187(10):2210-2218. doi:10.1093/aje/kwy106

205 6. Lee B, Dickson DM, deCamp AC, et al. Histo-Blood Group Antigen Phenotype Determines  
206 Susceptibility to Genotype-Specific Rotavirus Infections and Impacts Measures of Rotavirus  
207 Vaccine Efficacy. *J Infect Dis* 2018; 217:1399–1407.

208 7. Weddle E, Agaisse H. Spatial, Temporal, and Functional Assessment of LC3-Dependent  
209 Autophagy in *Shigella flexneri* Dissemination. *Infect Immun* 2018; 86. Available at:  
210 <http://dx.doi.org/10.1128/IAI.00134-18>.

211 8. Barbé L, Le Moullac-Vaidye B, Echasserieau K, et al. Histo-blood group antigen-binding  
212 specificities of human rotaviruses are associated with gastroenteritis but not with in vitro  
213 infection. *Scientific Reports*. 2018; 8. Available at: [http://dx.doi.org/10.1038/s41598-018-](http://dx.doi.org/10.1038/s41598-018-31005-4)  
214 [31005-4](http://dx.doi.org/10.1038/s41598-018-31005-4).



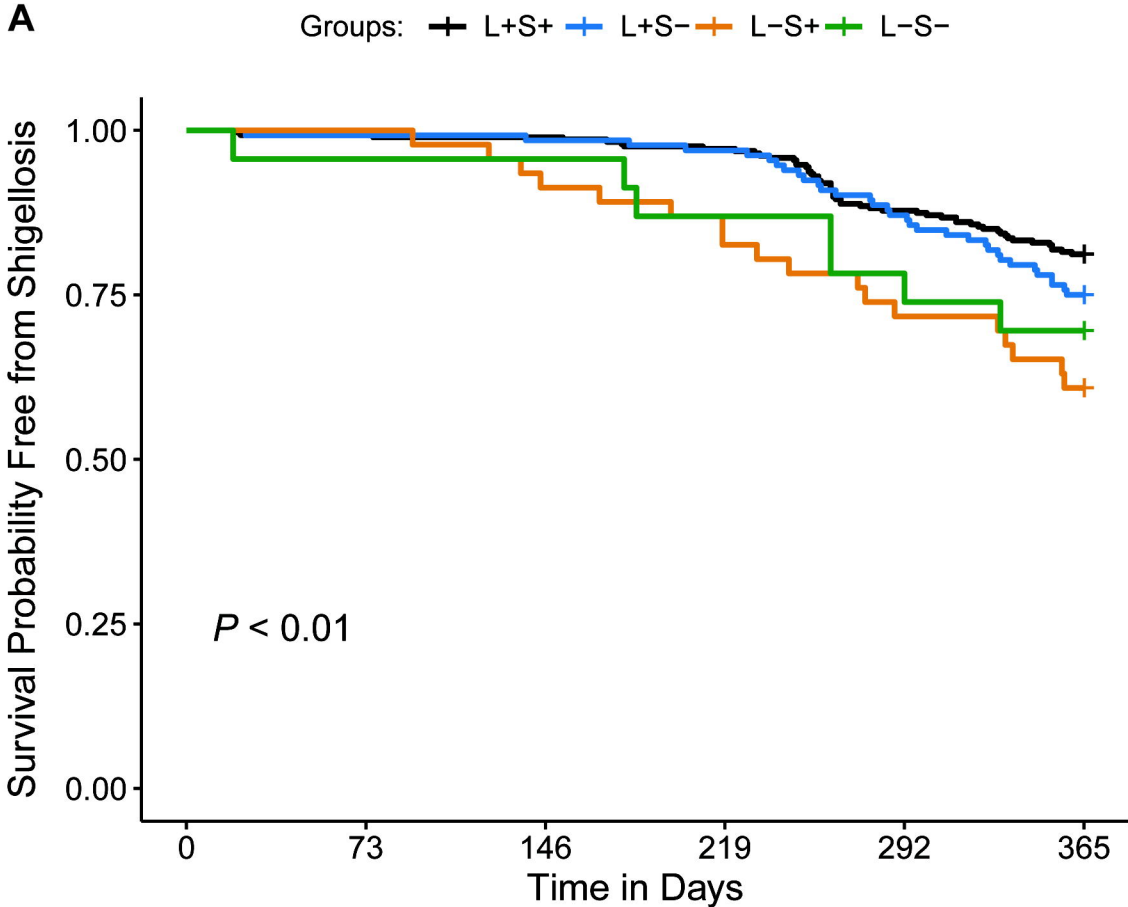
- 215 9. Dragoi AM, Agaisse H. The serine/threonine kinase STK11 promotes *Shigella flexneri*  
216 dissemination through establishment of cell-cell contacts competent for tyrosine kinase  
217 signaling. *Infect Immun*. 2014;82(11):4447-4457. doi:10.1128/IAI.02078-14  
218 10. Day CJ, Tran EN, Semchenko EA, et al. Glycan:glycan interactions: High affinity  
219 biomolecular interactions that can mediate binding of pathogenic bacteria to host cells. *Proc*  
220 *Natl Acad Sci U S A* 2015; 112:E7266–75.  
221 11. Das SK, Ahmed S, Ferdous F, et al. Changing emergence of *Shigella* sero-groups in  
222 Bangladesh: observation from four different diarrheal disease hospitals. *PLoS One*.  
223 2013;8(4):e62029. Published 2013 Apr 29. doi:10.1371/journal.pone.0062029  
224 12. Brazil JC, Sumagin R, Stowell SR, et al. Expression of Lewis-a glycans on  
225 polymorphonuclear leukocytes augments function by increasing transmigration. *J Leukoc*  
226 *Biol* 2017; 102:753–762.  
227 13. Raqib R, Mia SM, Qadri F, et al. Innate immune responses in children and adults with  
228 Shigellosis. *Infect Immun* 2000; 68:3620–3629.  
229 14. Sansonetti PJ, Arondel J, Huerre M, Harada A, Matsushima K. Interleukin-8 controls  
230 bacterial transepithelial translocation at the cost of epithelial destruction in experimental  
231 shigellosis. *Infection and Immunity*. 1999 Mar;67(3):1471-1480.  
232 15. Zhang Z, Jin L, Champion G, Seydel KB, Stanley SL Jr. *Shigella* infection in a SCID mouse-  
233 human intestinal xenograft model: role for neutrophils in containing bacterial dissemination  
234 in human intestine. *Infect Immun*. 2001;69(5):3240-3247. doi:10.1128/IAI.69.5.3240-  
235 3247.2001

### 236 Main Text Figure Legend

#### 237 **Figure 1: Lewis antigens are associated with altered susceptibility to shigellosis.**

238 A) Kaplan-Meier curve showing survival probability free from *Shigella* spp. attributed diarrheal  
239 episode in the first year of life based on inferred Lewis and Secretor status.  $P < 0.01$ , Log-rank  
240 test. Number of children who were at risk for *Shigella* spp. attributed diarrhea are listed at the  
241 bottom of the table. B) HT29 cells were treated with 2F-Peracetyl-Fucose (2F-PAF) or vehicle  
242 control for three days before infection. 2F-PAF treatment decreased the number of *S.*  
243 *flexneri* infection foci, y axis is infections per well normalized to input inoculum. N = 32 wells per  
244 treatment group. Data are combined from four independent experiments. C) 2F-PAF treatment  
245 did not alter *S. flexneri* infection foci area (spread). N = 28 wells per treatment group. Data are  
246 combined from three independent experiments Significance for both 1B and 1C was determined  
247 by a two-tailed nonparametric Mann–Whitney U test. \*,  $P < 0.05$ , ns = not significant.  
248  
249  
250  
251  
252  
253  
254  
255  
256  
257  
258  
259  
260  
261  
262  
263





Number at risk

L+S+	287	285	284	279	252	233
L+S-	132	131	130	128	115	99
L-S+	46	46	42	38	33	28
L-S-	23	22	22	20	18	16
	0	73	146	219	292	365
	Time in Days					

