

1 **Exploring Patterns and Trends in COVID-19 Exports from China, Italy, and Iran**

2 \*M.L. McHenry<sup>1</sup>, \*A. Soliman<sup>2</sup>, B. Dailey<sup>3</sup>, T. Chen<sup>4</sup>, J.J. Letterio<sup>2,3,5</sup>, G. Luo<sup>3</sup>

3 1. Case-Western Reserve University School of Medicine, Department of Population and  
4 Quantitative Health Sciences; 2. Case-Western Reserve University School of Medicine,  
5 Department of Pediatrics; 3. Case-Western Reserve University School of Medicine, Case  
6 Comprehensive Cancer Center; 4. Duke University, Trinity College of Arts and Sciences; 5. The  
7 Angie Fowler Adolescent & Young Adult Cancer Institute, University Hospitals Rainbow Babies  
8 & Children's Hospital.

9 \*These authors should be considered as joint first authors of this work.

10 Correspondence should be sent to: George Luo, [gxl263@case.edu](mailto:gxl263@case.edu)

11  
12  
13  
14  
15  
16  
17  
18  
19  
20  
21  
22  
23  
24  
25  
26  
27  
28  
29  
30  
31

32 **Summary**

33           This paper investigates COVID-19 exported cases by country and the time it takes  
34 between entry until case confirmation for the exported cases using publicly available data. We  
35 report that the average days from entry to confirmation is 7.7, 5.0 and 4.7 days for travelers from  
36 China, Italy, and Iran respectively. Approximately, one-third of all exported cases were  
37 confirmed within 3 days of entry suggesting these travelers were mildly symptomatic or  
38 symptomatic in arrival. We also found that earlier exported cases from each country had a longer  
39 time between entry to confirmation by an average of 3 days compared to later exports. Based  
40 upon our data, reported exported cases from South Korea were far fewer in comparison to those  
41 from China, Italy and Iran. Therefore, we suggest that careful monitoring of likely symptomatic  
42 travelers and better public awareness may lead to faster confirmation as well as reduced  
43 transmission of COVID-19 pandemic.

44  
45  
46  
47  
48  
49  
50  
51  
52  
53  
54  
55  
56  
57  
58  
59  
60  
61  
62

63  
64  
65  
66  
67  
68  
69  
70  
71  
72  
73  
74  
75  
76  
77  
78  
79  
80  
81  
82  
83  
84  
85  
86  
87  
88  
89  
90  
91  
92  
93

## **Introduction**

Coronavirus Disease 2019 (COVID-19) originated in Wuhan, China, where cases were first reported in December 2019. The virus spreads through human to human transmission, leading to transmission in other countries by international travelers [1, 2]. Although China instituted a lockdown on Wuhan on January 23<sup>rd</sup>, 2020, more than 100 exported cases from China were reported by February 14<sup>th</sup>, 2020 [3, 4]. The Wuhan travel ban had a significant reduction on international exportation of COVID-19, but there was still undetected community spread outside of China [4]. In February 2020, large outbreaks of local transmission of COVID-19 were reported in South Korea, Italy, and Iran [5]. We decided to examine these three countries because they experienced some of the largest outbreaks in the time immediately after the initial outbreak in China and thus provide important insight into the spread of the virus through travelers from Wuhan. Unfortunately, we could only gather enough data from Italy, Iran and China, so these are the main focus of the paper. By mid-March, over 100 countries had reported cases of COVID-19 in their countries, and the World Health Organization (WHO) declared COVID-19 as a pandemic [6, 7]. Assuming that the virus did not arise independently in multiple locations, an outbreak of COVID-19 outside of China requires an infected traveler to bring the virus into the country and subsequently infect others. For countries without large quantities of local transmission of COVID-19, the priority is to prevent spread of the virus from infected travelers [8]. To achieve this, many countries have issued travel restrictions or travel bans for high risk countries (i.e. those with high numbers of COVID-19 cases) [9].

For our study, we investigated the exported cases from China, Italy, and Iran to observe when they traveled and when they were subsequently confirmed to have COVID-19. We used this data to observe the dates of exported cases, dates of confirmation of COVID-19, and time between entry to confirmation. Analyzing this data provided us insights into understanding how to better prevent and monitor international spread of the COVID-19.

## **Methods**

### **Data Collection**

94 Exported COVID-19 cases were collected from January 2020 to March 20<sup>th</sup>, 2020. We  
95 used a previously published study by Chinazzi et al. for exported cases from China  
96 (**Supplementary Table 1**) [10]. For cases exported from Italy and Iran, the information was  
97 gathered through government official statements, credible reports from foreign ministries of  
98 health focusing on the COVID-19 infection as well as published news articles from several  
99 agencies available online for the public (**Supplementary Table 2**). Most cases were ascertained  
100 from news articles but some were ascertained through government health reports and others  
101 through peer-reviewed journal articles [11]. We organized infected cases that traveled in a group  
102 as a single cluster because this is how they were originally reported and it was not possible to  
103 parse out dates for an individual case within a source of data. As such, the dates of entry and  
104 confirmation are the same for each case within a cluster. Clusters ranged in size from 1-17.  
105 However, most clusters consisted of solely 1 case (**Supplementary Table 1, Supplementary**  
106 **Table 2**). The average cluster sizes for China, Italy, and Iran were 1.2, 1.2, and 1.9, respectively.  
107 Our gathered data about each cluster of COVID-19 cases included the following: date of entry of  
108 the travelers to their destination country, date of confirmation of COVID-19 of the case, and the  
109 estimated size of the affected group. If multiple people were affected, the first confirmation date  
110 was used. If no date of entry was listed, we excluded the cluster from other data such as entry  
111 date and time between entry and confirmation. Time-to-diagnosis of suspected cases based on  
112 the former data was calculated and the references for each were noted in the accompanying  
113 Supplemental Tables.

#### 114 **Analysis of Data**

115 We made graphs for dates of confirmation, date of arrival, and constructed a table to  
116 show the days between entry and confirmation for clusters of exported cases of each country  
117 (**Figure 1, Figure 2, Figure 3**). For early and late exports, we selected a time period of between  
118 10 to 14 days from the first reported entry as early. Any case after the cutoff date was considered  
119 late. We then compared the mean time from entry to confirmation between earlier and later  
120 discovered cases of COVID-19 within each country using a student's t-test. For comparison of  
121 time from entry to confirmation between exported cases from all the different countries, we used  
122 ANOVA to calculate a p-value.

#### 123 **Results**

124 **Figure 1** shows the date of entry for exports for China, Italy, and Iran. COVID-19  
125 infected cases left China as early as January 5th, 2020 (**Fig 1A**). Increased clusters of infected  
126 cases were noted between January 19th, 2020 and January 23rd, 2020 which dramatically  
127 decreased afterwards due to the Wuhan travel ban [4]. Infected cases from Italy entered other  
128 countries as early as February 15th, 2020 (**Fig 1B**). Subsequently, infected travelers increased to  
129 reach their highest level on February 29th, 2020. Due to the Italy travel ban announced on March  
130 9th, 2020, a decrease in COVID-19 travelers is seen afterwards [12]. From Iran, infected  
131 travelers were entering other countries and transmitting the disease at a stable rate over the  
132 period from February 14th, 2020 to March 6th, 2020. Cases began to increase from February  
133 20th until February 27th, 2020 (**Fig 1C**).

134 **Figure 2** shows the clusters of COVID-19 exported cases from China, Italy and Iran  
135 according to their dates of confirmation. Exported cases from China were confirmed starting  
136 from January 12th, 2020 to reach two peaks on January 24th, 2020 and February 1st, 2020 before  
137 declining (**Fig 2A**). Interestingly, these two dates are the day after the Wuhan travel ban and  
138 approximately one week after the travel ban, respectively. Exported cases from Italy were  
139 confirmed starting on February 25<sup>th</sup>, 2020 and continued as they reached high numbers in early  
140 March 2020 (**Fig 2B**). Exported cases from Italy declined afterwards, likely due to implemented  
141 travel restrictions by the Italian government [12]. The confirmation of exported COVID-19 cases  
142 from Iran peaked on February 26th, 2020 then slowly declined since then (**Fig 2C**).

143 We then explored the approximate time between entry and confirmation of COVID-19  
144 infection from China, Italy and Iran in foreign nations in days (**Figure 3**). For exported cases  
145 from China (**Fig 3A**), we observe a bimodal distribution with modes at 3 and 8 days between  
146 entry and confirmation which likely correlate with symptomatic (3 days) and asymptomatic cases  
147 (8 days) on arrival. Likewise, there are similar peaks at 3 days in exports from Italy (**Fig 3B**) and  
148 Iran (**Fig 3C**) suggesting these are cases of symptomatic or near symptomatic infected  
149 individuals. We calculate the mean time between entry and confirmation to be 7.7, 5.5, and 4.7  
150 days for exports from China, Italy, and Iran respectively (**Table 1**). Exports from China had a  
151 significantly longer entry to confirmation time which is likely explained by the lack of testing  
152 kits at the start of this period ( $p < 0.05$ ).

153 We found that earlier exported cases (first 10-14 days after arrival of 1<sup>st</sup> exported  
154 traveler) had a significantly longer time from entry to confirmation compared to later cases for

155 each country (**Table 1**). For these three countries, the difference between earlier and later exports  
156 ranged from 2.1-2.9 days.

## 157 **Discussion**

158 We performed a thorough search of government reports, news reports, and research  
159 articles for information about exported cases, but we had many cases without entry date while  
160 other cases had ambiguous information about the countries to which cases traveled  
161 (**Supplementary Table 3**). As a result we had to exclude these from our calculation of time  
162 between arrival and confirmation of COVID-19. While this is a notable limitation and it is  
163 possible that there are unmeasured differences between those we excluded and those in our  
164 analysis, we do not believe that their exclusion has biased our results, as these clusters had  
165 similar dates of confirmation and similar cluster sizes to those that were included  
166 (**Supplementary Table 4**). The only notable difference is that the cluster size was larger for  
167 exports from Italy with no date of entry, which was mostly due to a single cluster of 17 among  
168 the clusters with no date of entry. For China's exported cases, the WHO tracked cases with travel  
169 history to China. Thus, our information for China is more complete and accurate [5]. However,  
170 our data did not include those who were evacuated due to COVID. While the inclusion of  
171 evacuees may have altered our results, people evacuated by their national government represent a  
172 different (likely lower) level of risk for transmission in their destination than those who travelled  
173 on their own. For Italy and Iran, we relied primarily on news outlets since there was no official  
174 tracking by any organization. Although our data is incomplete, we believe this study is the  
175 largest collection of current data on exports from Italy and Iran, two countries that initially had  
176 some of the highest burden of COVID-19 during the early stages of the pandemic and provide  
177 insight into how the virus was transmitted through at that time.

178 We attempted to ascertain exported cases from South Korea but were surprised at how  
179 few countries reported any (**Supplementary Table 3**). Due to such a small number of cases, we  
180 excluded this data from our calculation of time until confirmation but have included the clusters  
181 that we could identify. The very small number of exported cases from South Korea suggests that  
182 proper measures were taken to prevent spread of the virus to other countries. The very small  
183 number of exported cases from South Korea may suggest that proper measures were taken to  
184 prevent spread of the virus to other countries. These measures included early detection of local  
185 transmission and thorough testing of asymptomatic and suspicious contacts [13].

186 The time from entry to confirmation is a critical time in which travelers can spread the  
187 virus, potentially without being aware of doing so. Our estimated days from entry to  
188 confirmation is in line with the incubation period of approximately 5 days from previous studies  
189 [14]. The time between entry to confirmation is an important number for policymakers as it can  
190 help inform guidelines on travel restrictions, quarantine measures, and testing of individuals who  
191 have just entered the country. Further, it can help inform better epidemiological models of  
192 transmission. The time from entry to confirmation for China's exports was significantly longer  
193 compared to Italy and Iran. This is likely because testing for COVID-19 was still not readily  
194 available in many countries when exports first started and China was exporting cases earlier than  
195 Italy and Iran. There were even confirmed exported cases from China before January 10<sup>th</sup>, when  
196 the genome of the SARS-CoV-2 virus was first published [15, 16].

197 For all three countries, we observed that the earlier wave of exported cases had a longer  
198 time from entry to confirmation compared to later wave of cases from the same country (**Table**  
199 **1**). It is unlikely that the incubation period of the virus would change during this time period; the  
200 shorter time until confirmation may be explained by more aggressive testing policies or an  
201 increased awareness of COVID-19 symptoms leading to earlier testing and confirmation. Early  
202 exports from Italy and Iran of COVID-19 were sometimes not tested for COVID-19 because  
203 these countries were not considered high-risk at the time [17]. It is also possible that earlier  
204 travelers were infected more immediately prior to their departure while later travelers were  
205 infected for many days before leaving. There are known examples of early exported cases  
206 experiencing symptoms for more than 3 days prior to confirmation of COVID-19 [18]. In our  
207 own data, 36.5% of all cases were confirmed in 3 days or less, indicating that they were likely  
208 symptomatic at the time that they left their country of exportation. Additionally, many COVID-  
209 19 cases, including exports from other countries, are detected through self-reporting to the  
210 hospital or clinic [19, 20]. This adds further weight to the argument that heightened awareness of  
211 COVID-19 in the later wave of exported cases likely contributed to the shorter time until  
212 confirmation observed in this group.

213 Two of the most common strategies to reduce transmission due to exportation is a  
214 complete travel ban or a 14-day quarantine of travelers from high-risk countries [9]. However,  
215 these measures are much more effective if they are implemented early. In the earliest stages of  
216 the pandemic, it was not immediately clear which countries were considered "high-risk" and by

217 the time a country had reported outbreaks and enacted policies to reduce exportation of COVID-  
218 19 cases, there were already many exported cases. For example, South Korea implemented  
219 international travel reductions when they reported 200 COVID-19 cases domestically, and very  
220 few cases were exported as a result [21]. Other countries responded soon afterwards with travel  
221 recommendations or bans against South Korea, which reduced the number of exportations [22].  
222 While Italian and Chinese lockdowns did help reduce exported cases significantly, there were  
223 already hundreds of exported cases at the time that these policies were enacted [4]. This is  
224 illustrated by the high number of cases that were exported from China prior to the travel ban [3,  
225 4]. Similarly, as shown in this article, Iran and Italy exported many cases, which may have been  
226 a result of the delay in recognition of risk. This point is underscored by the fact that, in our data  
227 on these two countries, the later wave of exported cases had confirmed diagnoses much faster  
228 than the earlier ones, demonstrating that countries had a higher level of awareness and concern as  
229 time went on (**Table 1**). In contrast, South Korea, which had vigilant surveillance and against  
230 which more timely travel bans were instituted, appears to have exported far fewer cases. Lastly,  
231 not all countries have the necessary resources or policies in place to adequately test for COVID-  
232 19, which may have greatly increased the undetected exported cases of COVID-19 [9].

233 Understanding the time until confirmation gives insight into how long people may be in  
234 the country and able to transmit the disease before being recognized as a COVID-19 case, a time  
235 during which they may have already begun to transmit the disease to others in their community.  
236 Further, our work shows how transmission continued to take place even as travel bans were  
237 implemented. As governments consider and implement travel bans during this pandemic, our  
238 research sheds light onto the risk posed by international travelers and provides valuable  
239 information on epidemiological surveillance of the spread of COVID-19 between countries. This  
240 information and analysis can lead to better epidemiological models, more informed decision  
241 making about how travel bans affect the exportation of cases, and how best to surveil and test  
242 travelers in order to minimize transmission of COVID-19.

243

- 244 1. Cascella, M., et al., *Features, evaluation and treatment coronavirus (COVID-19)*, in *Statpearls*  
245 *[internet]*. 2020, StatPearls Publishing.
- 246 2. Riou, J. and C.L. Althaus, *Pattern of early human-to-human transmission of Wuhan 2019 novel*  
247 *coronavirus (2019-nCoV), December 2019 to January 2020*. *Eurosurveillance*, 2020. **25**(4): p.  
248 2000058.
- 249 3. Fan, J., et al., *Epidemiology of Coronavirus Disease in Gansu Province, China, 2020*. 2020.



- 250 4. Organization, W.H., *WHO Director-General's Remarks at the Media Briefing on COVID-2019*  
251 *Outbreak*. World Health Organization, 2020.
- 252 5. Organization, W.H., *Coronavirus disease 2019 (COVID-19) situation report-40*. WHO; 2020.  
253 Reference Source, 2020.
- 254 6. Cucinotta, D. and M. Vanelli, *WHO declares COVID-19 a pandemic*. Acta bio-medica: Atenei  
255 Parmensis, 2020. **91**(1): p. 157-160.
- 256 7. Organization, W.H., *Coronavirus disease 2019 (COVID-19) Situation Report – 55*. 2019.
- 257 8. Jernigan, D.B., *Update: public health response to the coronavirus disease 2019 outbreak—United*  
258 *States, February 24, 2020*. MMWR. Morbidity and mortality weekly report, 2020. **69**.
- 259 9. Cohen, J. and K. Kupferschmidt, *Strategies shift as coronavirus pandemic looms*. 2020, American  
260 Association for the Advancement of Science.
- 261 10. Chinazzi, M., et al., *The effect of travel restrictions on the spread of the 2019 novel coronavirus*  
262 *(COVID-19) outbreak*. Science, 2020. **368**(6489): p. 395-400.
- 263 11. Worldometers.info, *COVID-19 Coronavirus Pandemic*. 2020: Dover, Delaware, USA.
- 264 12. Barry, C., *Italian Premier Locks Down Entire Country to Stop Virus*. 2020, Associated Press: AP  
265 News.
- 266 13. Dasl Yoon, T.W.M., *How South Korea Put Into Place the World's Most Aggressive Coronavirus*  
267 *Test Program*, in *Wall Street Journal*. 2020, Dow Jones & Company.
- 268 14. Lauer, S.A., et al., *The incubation period of coronavirus disease 2019 (COVID-19) from publicly*  
269 *reported confirmed cases: estimation and application*. Annals of internal medicine, 2020. **172**(9):  
270 p. 577-582.
- 271 15. Wu, F., et al., *A new coronavirus associated with human respiratory disease in China*. Nature,  
272 2020. **579**(7798): p. 265-269.
- 273 16. Zhao, S., et al., *Estimating the unreported number of novel coronavirus (2019-nCoV) cases in*  
274 *China in the first half of January 2020: a data-driven modelling analysis of the early outbreak*.  
275 Journal of clinical medicine, 2020. **9**(2): p. 388.
- 276 17. Mossa-Basha, M., et al., *Radiology department preparedness for COVID-19: radiology scientific*  
277 *expert panel*. Radiology, 2020: p. 200988.
- 278 18. Lescure, F.-X., et al., *Clinical and virological data of the first cases of COVID-19 in Europe: a case*  
279 *series*. The Lancet Infectious Diseases, 2020.
- 280 19. Menni, C., et al., *Real-time tracking of self-reported symptoms to predict potential COVID-19*.  
281 Nature medicine, 2020: p. 1-4.
- 282 20. Segal, E., et al., *Building an international consortium for tracking coronavirus health status*.  
283 Nature Medicine, 2020: p. 1-4.
- 284 21. Yonhap, *Airlines to suspend more flights over coronavirus*, in *The Korea Herald*. 2020, Kwon  
285 Chung-won: Seoul, South Korea.
- 286 22. Park, K., *These Countries Just Restricted Travel From South Korea*, in *Bloomberg*. 2020.

287

288

289

290

291

292

293  
294  
295  
296  
297

**Table 1. Summary of Days from Entry to Confirmation**

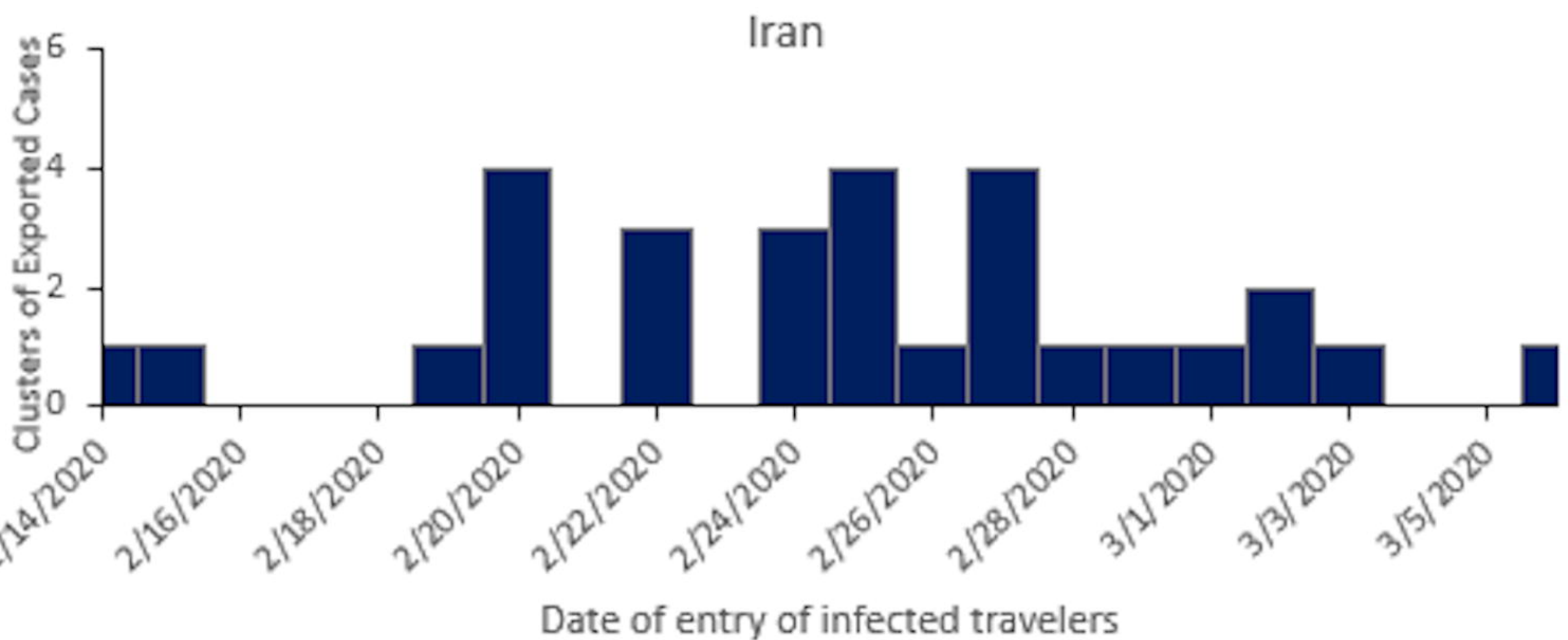
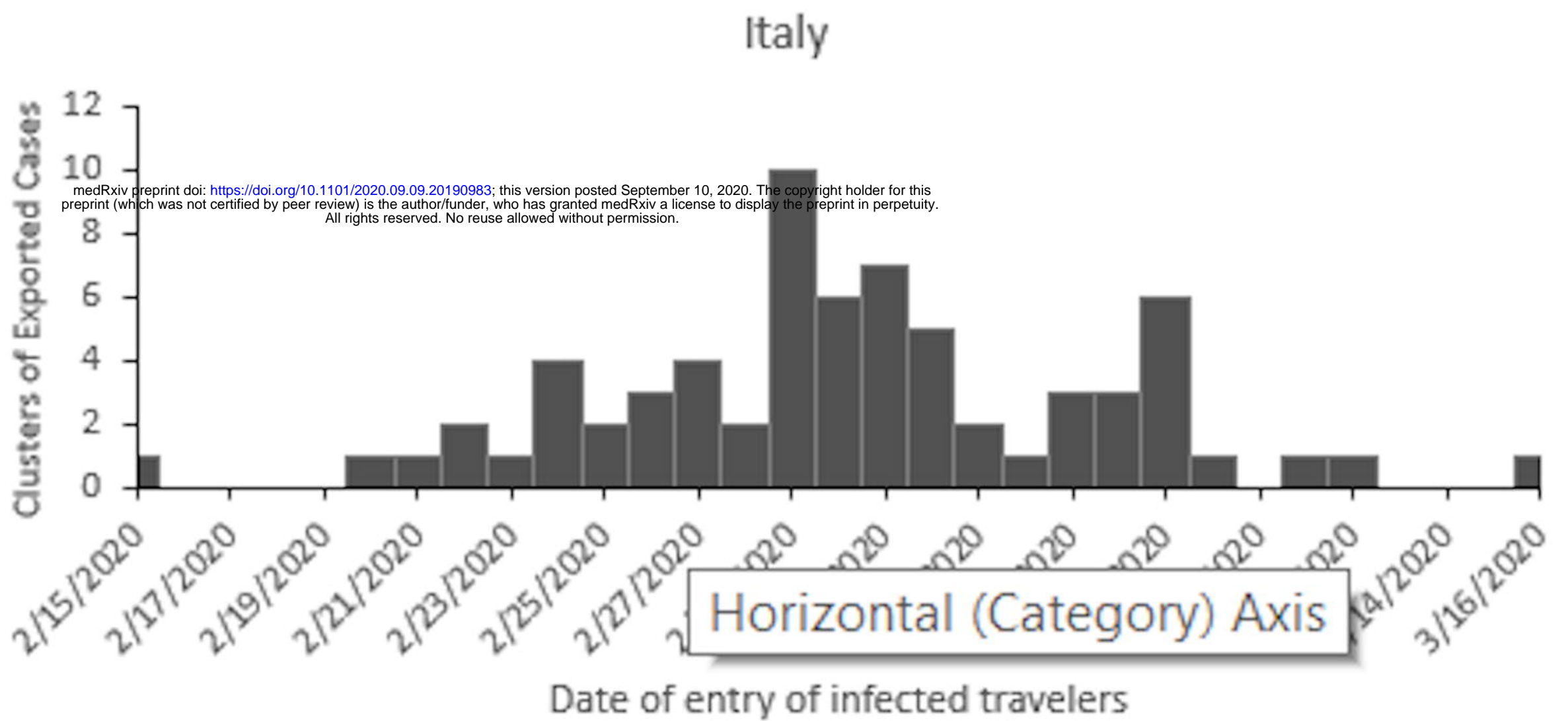
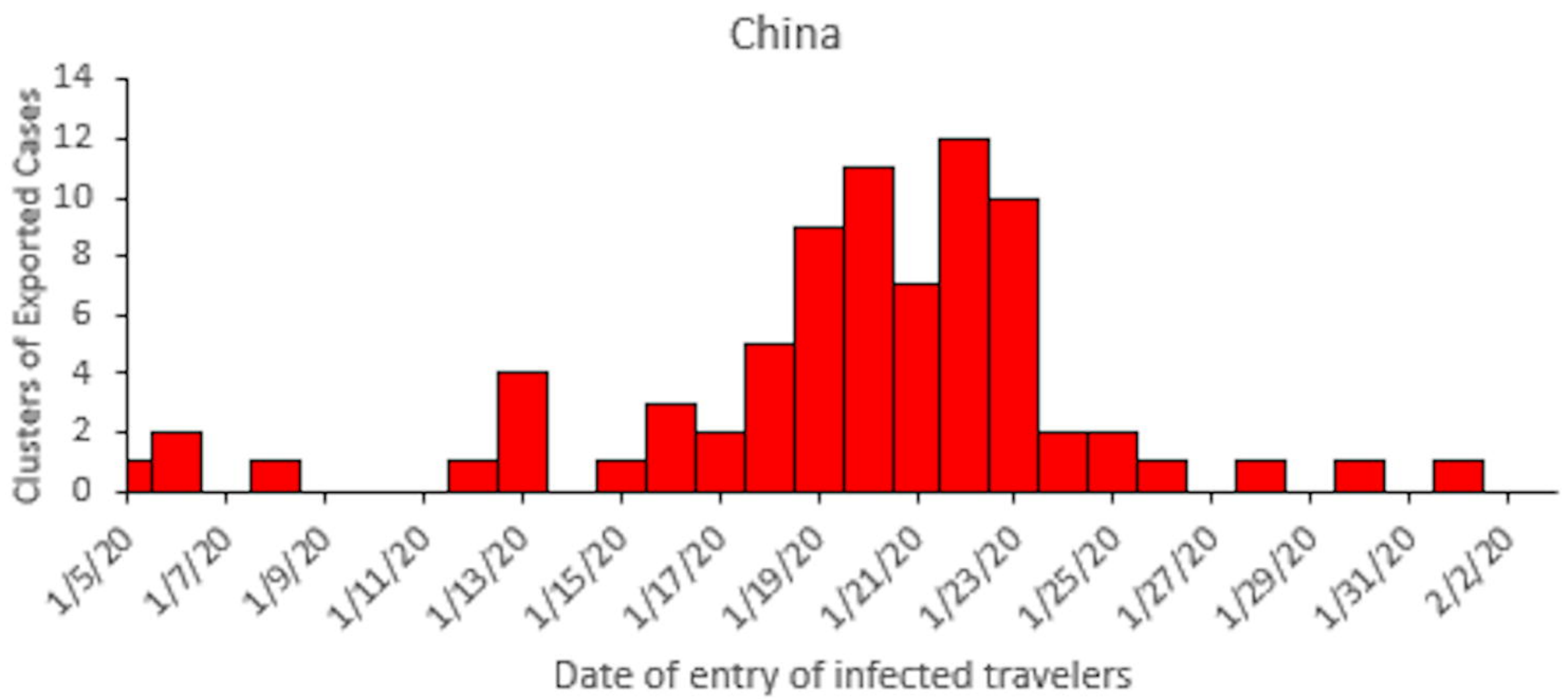
Country	Dates of Entry (in 2020)	Clusters	Days from Entry to Confirmation: Mean (SD)	Student's t-test P-value*	ANOVA P-value <sup>□</sup>
<b>China</b>	<b>1/5 – 2/1</b>	<b>77</b>	<b>7.7 (4.31)</b>	<b>&lt;0.005</b>	<b>&lt;0.01</b>
<b>Early China Exports</b>	<b>1/5 – 1/19</b>	<b>29</b>	<b>9.5 (3.97)</b>		
<b>Late China Exports</b>	<b>1/20 – 2/1</b>	<b>48</b>	<b>6.6 (5.28)</b>		
<b>Italy</b>	<b>2/15 – 3/16</b>	<b>52</b>	<b>5 (3.28)</b>	<b>&lt;0.001</b>	
<b>Early Italy Exports</b>	<b>2/15 – 2/29</b>	<b>26</b>	<b>6.9 (3.30)</b>		
<b>Late Italy Exports</b>	<b>3/1 – 3/16</b>	<b>26</b>	<b>4 (2.63)</b>		
<b>Iran</b>	<b>2/14 – 3/6</b>	<b>28</b>	<b>4.7 (3.17)</b>	<b>~0.010</b>	
<b>Early Iran Exports</b>	<b>2/14 – 2/26</b>	<b>21</b>	<b>5.5 (3.60)</b>		
<b>Late Iran Exports</b>	<b>2/27 – 3/6</b>	<b>33</b>	<b>3.4 (1.75)</b>		

298  
299  
300  
301  
302  
303

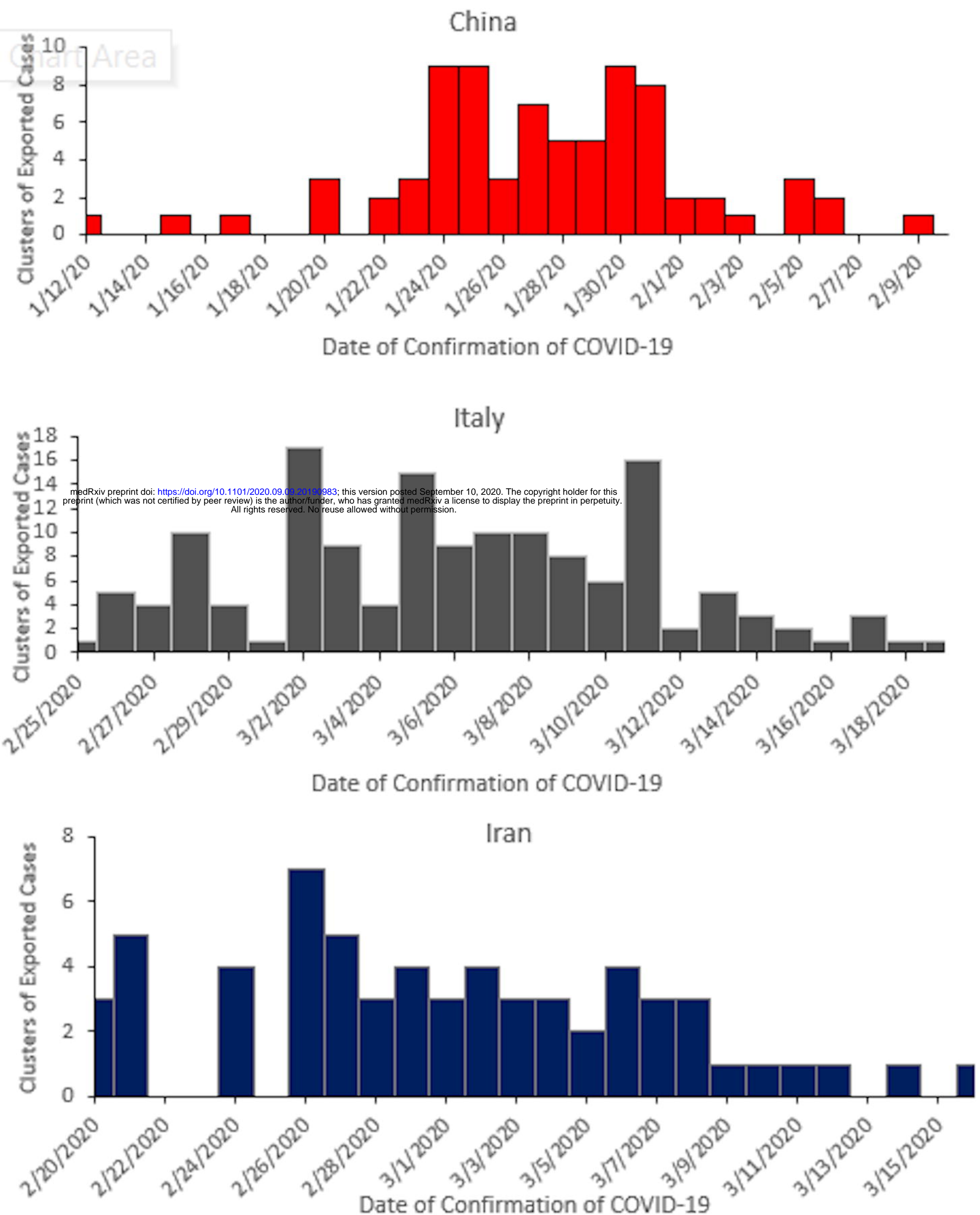
**Table 1. Summary of Days From Entry Until Confirmation of COVID-19**

\*A student's t-test was used to calculate p-values for the difference between early and late exports in mean days until COVID-19

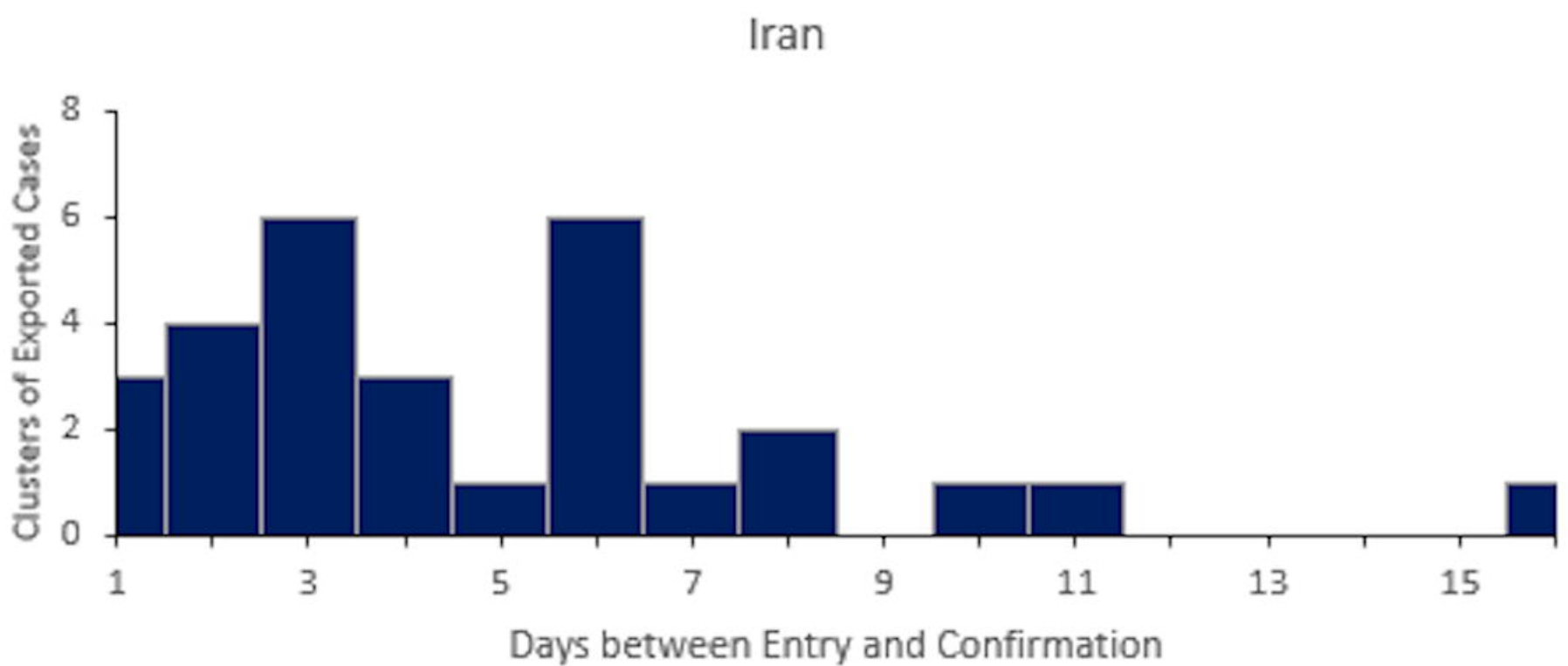
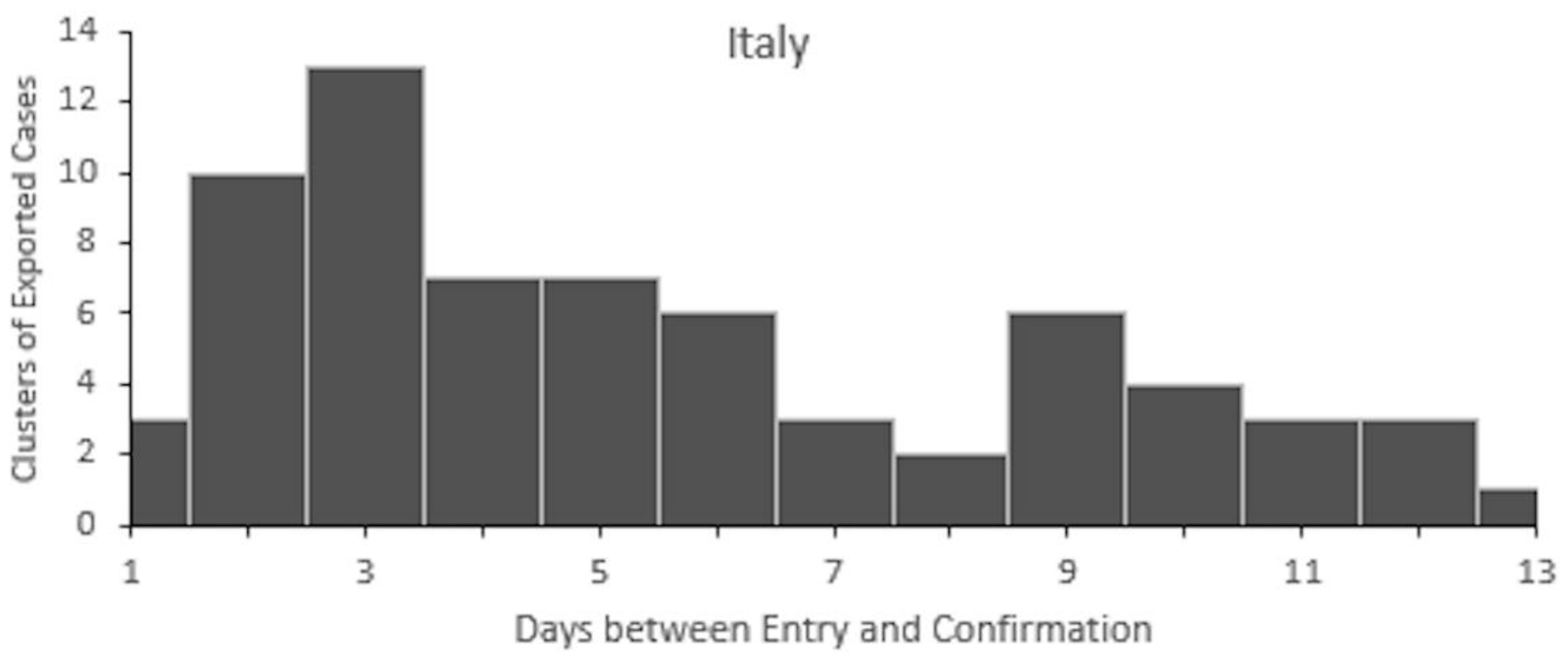
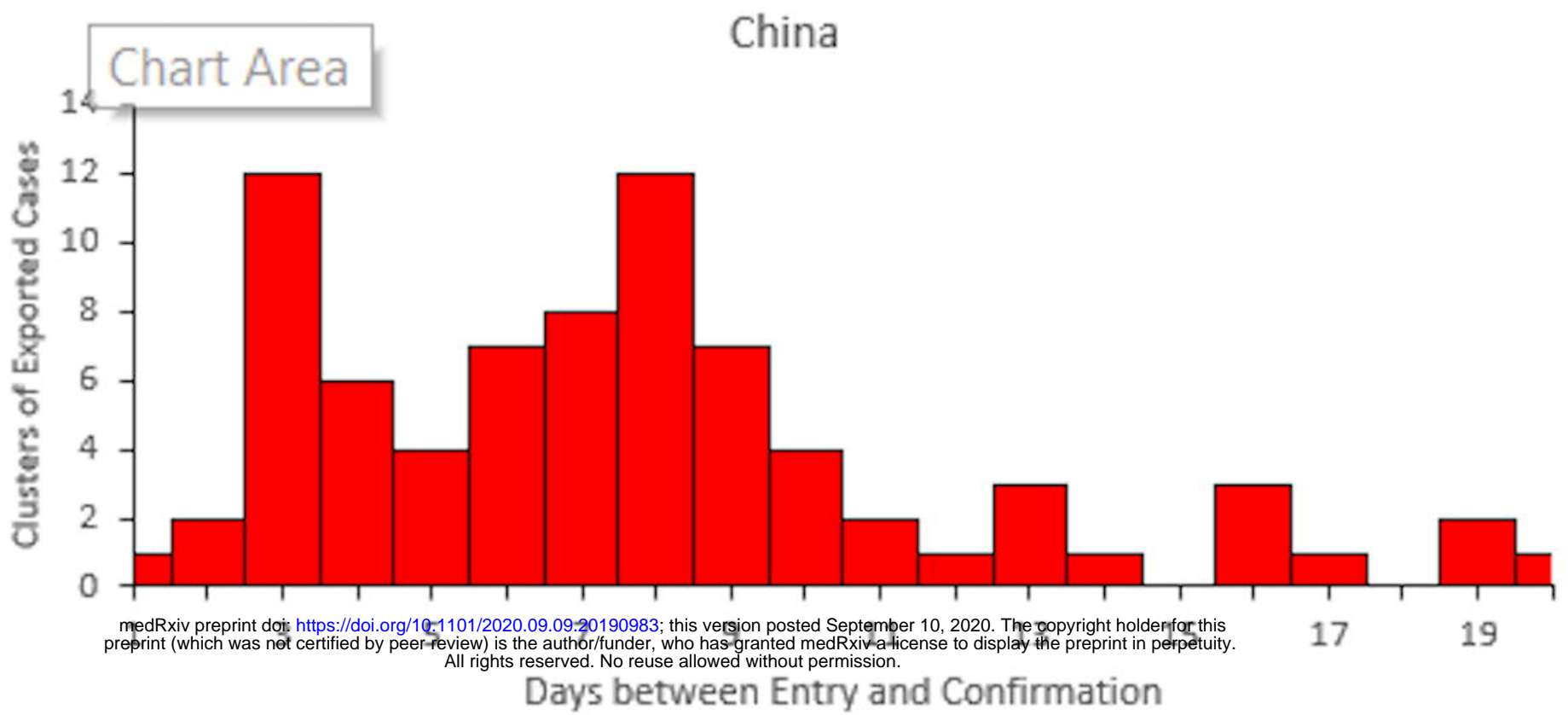
□ Analysis of variance (ANOVA) testing was performed to calculate a p-value for the difference in days until confirmation between the three countries shown



**Figure 1. Exported cases by country according to entry date. Number of reported exported cluster of cases from A. China B. Italy C. Iran by date of arrival into foreign country.**



**Figure 2. Exported cases by country according to Confirmation date.** Number of reported exported cluster of cases from A. China B. Italy C. Iran by date of confirmation of COVID-19 into foreign country.



**Figure 3. Exported cases by country according to days between Entry and Confirmation.** Number of reported exported cluster of cases from A. China B. Italy C. Iran by time between entry and confirmation of COVID-19 into foreign country.