

1 **Vitamin D and Covid-19 Susceptibility and Severity: a Mendelian Randomization**
2 **Study**

3
4 **Authors:**

5 *Guillaume Butler-Laporte^{1,2}, *Tomoko Nakanishi^{1,3,4,5}, Vincent Mooser^{3,6}, David R.
6 Morrison¹, Tala Abdullah¹, Olumide Adeleye¹, Noor Mamlouk¹, Nofar Kimchi^{1,7}, Zaman
7 Afrasiabi¹, Nardin Rezk¹, Annarita Giliberti⁸, Alessandra Renieri^{8,9}, Yiheng Chen¹, Sirui
8 Zhou^{1,2}, Vincenzo Forgetta¹, J Brent Richards^{1,2,3,10}

9
10 *These authors made equal contributions to this manuscript.

11
12 **Affiliations:**

- 13 1) Lady Davis Institute, Jewish General Hospital, McGill University, Montréal,
14 Québec, Canada
- 15 2) Department of Epidemiology, Biostatistics and Occupational Health, McGill
16 University, Montréal, Québec, Canada
- 17 3) Department of Human Genetics, McGill University Montréal, Québec, Canada
- 18 4) Kyoto-McGill International Collaborative School in Genomic Medicine, Graduate
19 School of Medicine, Kyoto University, Kyoto, Japan
- 20 5) Research Fellow, Japan Society for the Promotion of Science
- 21 6) Canada Excellence Research Chair in Genomic Medicine, McGill University,
22 Montréal, Québec, Canada
- 23 7) Ruth and Bruce Rappaport Faculty of Medicine, Technion Israel Institute of
24 Technology, Israel
- 25 8) Medical Genetics, University of Siena, Siena, Italy
- 26 9) Genetica Medica, Azienda Ospedaliera Universitaria Senese, Siena, Italy
- 27 10) Department of Twin Research, King's College London, London, United Kingdom

28
29 **Corresponding author:**

30 Brent Richards, Professor of Medicine
31 McGill University
32 Senior Lecturer, King's College London (Honorary)

33 Contact:

34 Pavilion H-413, Jewish General Hospital
35 3755 Côte-Ste-Catherine
36 Montréal, Québec, Canada, H3T 1E2

37 T: +1 514 340 8222 x24362 F: +1 514 340 7529

38 E: brent.richards@mcgill.ca

39 www.mcgill.ca/genepi

40
41 **Funding:**

42 The Richards research group is supported by the Canadian Institutes of Health
43 Research (CIHR: 365825; 409511), the Lady Davis Institute of the Jewish General
44 Hospital, the Canadian Foundation for Innovation, the NIH Foundation, Cancer
45 Research UK, Genome Québec, the Public Health Agency of Canada and the Fonds de
46 Recherche Québec Santé (FRQS). GBL is supported by a joint scholarship from the
47 FRQS and Québec's Ministry of Health and Social Services. TN is supported by
48 Research Fellowships of Japan Society for the Promotion of Science (JSPS) for Young
49 Scientists and JSPS Overseas Challenge Program for Young Researchers. JBR is
50 supported by a FRQS Clinical Research Scholarship. Support from Calcul Québec and
51 Compute Canada is acknowledged. TwinsUK is funded by the Wellcome Trust, Medical

52 Research Council, European Union, the National Institute for Health Research (NIHR)-
53 funded BioResource, Clinical Research Facility and Biomedical Research Centre based
54 at Guy's and St Thomas' NHS Foundation Trust in partnership with King's College
55 London. These funding agencies had no role in the design, implementation or
56 interpretation of this study.

57

58 **Disclosures:**

59 JBR has served as an advisor to GlaxoSmithKline and Deerfield Capital. These
60 agencies had no role in the design, implementation or interpretation of this study.

61

62 **Article type:** Research

63 **Word count:** 3315 (Introduction, Methods, Results, and Discussion)

64 **Key words:** Vitamin D, Covid-19, Sars-CoV-2, Mendelian Randomization, Outcome

65

66

67 **Abstract**

68 *Introduction*

69 Increased vitamin D levels, as reflected by 25OHD measurements, has been proposed
70 to protect against Covid-19 disease based on *in-vitro*, observational, and ecological
71 studies. However, vitamin D levels are associated with many confounding variables and
72 thus associations described to date may not be causal. Vitamin D MR studies have
73 provided results that are concordant with large-scale vitamin D randomized trials. Here,
74 we used two-sample MR to assess the effect of circulating 25OHD levels on Covid-19
75 susceptibility.

76

77 *Methods*

78 Genetic variants strongly associated with 25OHD levels in a 443,734-participant
79 genome-wide association study (GWAS) were used as instrumental variables. GWASs
80 of Covid-19 susceptibility and severity from the Covid-19 Host Genetics Initiative were
81 used to test the effect of 25OHD levels on these outcomes. Cohorts from the Covid-19
82 Host Genetics Initiative GWAS included up to 966,395 individuals of European ancestry.

83

84 *Results*

85 Genetically increased 25OHD levels by one standard deviation on the logarithmic scale
86 had no clear effect on susceptibility but tended to increase the odds ratio of
87 hospitalization (OR = 2.34; 95% CI: 1.33, 4.11) and severe disease (OR = 2.21; 95% CI:
88 0.87, 5.55). Extensive sensitivity analyses probing the assumptions of MR provided
89 consistent estimates.

90

91 *Conclusion*

92 These findings do not support a protective role of increased 25OHD levels on Covid-19
93 outcomes and may suggest harm. At present, individuals should not use vitamin D
94 supplements to protect against Covid-19 outcomes, and on-going supplementation trials
95 should closely monitor for signals of harm.

96 **Introduction**

97 SARS-CoV-2 infection has killed hundreds of thousands of individuals and has led to the
98 largest economic contraction since the Great Depression¹. Vaccines are many months
99 away and their resultant immunity is unknown². Therefore, therapies are required to treat
100 severe Covid-19 disease and to prevent its complications. Therapeutic development, in
101 turn, requires well-validated drug targets to lessen Covid-19 severity.

102
103 Recently, vitamin D status, as reflected by 25-hydroxy-vitamin D (25OHD) level has
104 been identified potentially actionable drug target in the prevention and treatment of
105 Covid-19³. As the pre-hormone to the biologically active calcitriol, 25OHD has been
106 epidemiologically linked to many health outcomes^{4,5}. Given calcitriol's recognized *in-vitro*
107 immunomodulatory role⁶, as well as observational and ecological studies on measured
108 25OHD blood levels and Covid-19^{7,8}, the vitamin D pathway might be a biologically
109 plausible target in Covid-19. This could be of public health importance, given that the
110 prevalence of vitamin D insufficiency is high in most countries, and that more than 37%
111 of elderly adults in the USA take vitamin D supplements⁹. Further, 25OHD
112 supplementation is inexpensive and reasonably safe—thus providing a potential avenue
113 to lessen the burden of the SARS-CoV-2 pandemic.

114
115 However, observational studies on 25OHD are prone to confounding and reverse
116 causation bias. Confounding happens when the relationship between exposure (25OHD)
117 and the outcome (Covid-19) is influenced by an unobserved, or improperly controlled
118 common causes. Reverse causation happens when the outcome itself is a cause of the
119 exposure. Likewise, conclusions drawn from *in-vitro* may not be applicable *in-vivo*.
120 Accordingly, randomized controlled trials (RCTs) on 25OHD supplementation have been
121 undertaken to test their effect on disease outcomes where observational studies have
122 supported a role for 25OHD level. However, across endocrinology, respiratory,
123 cardiology, and other specialties, these trials have most often have failed to show clinical
124 benefits¹⁰⁻¹². Some RCTs have even shown detriment to 25OHD supplementation¹³. In
125 the field of infectious diseases, a trial of 25OHD supplementation showed increased risk
126 of upper respiratory infection in the intervention arm¹⁴, and a recent trial on sepsis
127 obtained a numerically higher mortality rate in patients who received 25OHD
128 supplementation¹⁵. However, while RCTs can control for confounding and provide
129 unbiased estimates of the effect of 25OHD supplementation in Covid-19, they require
130 considerable time, as well as financial and human resources.

131
132 Presently, there are more than 15 registered on-going RCTs testing the effect of vitamin
133 D on Covid-19 outcomes on clinicaltrials.gov. Given difficulties recruiting Covid-19
134 patients into trials and the probability that epidemiological estimates of vitamin D effects
135 are likely to be confounded, data are urgently needed to assess the causal role of
136 vitamin D on Covid-19 outcomes.

137
138 Mendelian randomization (MR) is a genetic epidemiology method that uses genetic
139 variants as instrumental variables to infer the causal effect of an exposure (in this case
140 25OHD level) on an outcome (in this case, Covid-19 susceptibility and severity)¹⁶. MR
141 overcomes confounding bias since genetic alleles are randomized to the individual at
142 conception, thereby breaking associations with most confounders. Similarly, since
143 genetic alleles are always assigned prior to disease onset, they are not influenced by
144 reverse causation. In the case of vitamin D, MR has been able to provide causal effect
145 estimates consistently in line with those obtained from RCTs^{10,17-21}, and would therefore
146 support investments in 25OHD supplementation trials in Covid-19, if a benefit was

147 shown. Further, since MR results can be generated rapidly, such evidence may provide
148 interim findings while awaiting RCT results.

149

150 However, MR relies on several core assumptions²². First, genetic variants must be
151 associated with the exposure of interest. Second, they should not affect the outcome
152 except through effects on the exposure (also known as lack of horizontal pleiotropy).
153 Third, they should not associate with the confounders of the exposure-outcome
154 relationship. Of these, the most problematic is the second assumption. Yet, in the case
155 of 25OHD, many of its genetic determinants reside at loci that harbour genes whose
156 roles in 25OHD production, metabolism and transport are well known²³. Leveraging this
157 known physiology can help to prevent the incorporation of genetic variants that could
158 lead to horizontal pleiotropy.

159

160 Here, we used genetic determinants of serum 25OHD from a recent genome-wide
161 association study (GWAS) and meta-analysis of more than 443,734 participants of
162 European ancestry²⁴ in an MR study to test the effect of increased 25OHD level on
163 Covid-19 susceptibility and severity.

164

165 **Methods**

166 We used a two-sample MR approach to estimate the effect of 25OHD levels on Covid-19
167 susceptibility and severity. In two-sample MR²⁵, the effect of genetic variants on 25OHD
168 and on Covid-19 outcomes are estimated in separate GWASs from different populations.
169 This allows for increased statistical power by increasing the sample size in both the
170 exposure and outcome cohorts.

171

172 *Choice of 25OHD genetic instruments*

173 To find genetic variants explaining 25OHD levels²⁴, we used a GWAS from our group,
174 which is the largest published GWAS of 25OHD levels. We selected SNPs whose effect
175 on 25OHD level was genome-wide significant ($P < 5 \times 10^{-8}$), minor allele frequency was
176 more than 1%, and which were identified using conditional and joint (COJO) analysis²⁶.
177 COJO identifies conditionally independent SNPs and allows for the addition of more
178 genetic instruments without generating falsely narrow confidence intervals due to genetic
179 linkage disequilibrium. For SNPs that were not available in the outcome GWAS or with
180 palindromic alleles of intermediate frequency (between 42% and 58%), we used the
181 LDlink tool²⁷ to find genetic proxies in the European 1000 Genomes dataset using
182 linkage disequilibrium threshold (r^2) of 90%.

183

184 *Covid-19 outcome definitions and GWASs*

185 We used the Covid-19 Host Genetics Initiative (Covid-19 HGI) phenotype definitions and
186 GWAS summary statistics for Covid-19 susceptibility, hospitalization, and severe
187 disease outcomes²⁸. We meta-analyzed summary statistics from cohorts of European
188 ancestry to obtain the effects of the 25OHD-associated genetics variants on Covid-19
189 outcomes. Fixed effect meta-analysis models were used to combine summary statistics,
190 with the METAL package²⁹.

191

192 The susceptibility phenotype compared confirmed Covid-19 cases, defined as laboratory
193 confirmed of SARS-CoV-2 infection based on RNA or serology tests, or by electronic
194 health records (using International Classification of Diseases or physician notes), with
195 controls defined as laboratory tested negative for SARS-CoV-2 infection (for all tests if
196 multiple were performed) or self-reported test negative. The hospitalized phenotype
197 compared cases defined as hospitalized patients with Covid-19, and controls as Covid-

198 19 positive non-hospitalized individuals. The severe disease phenotype cases were
199 defined as hospitalized individuals with Covid-19 and requiring respiratory support.
200 Respiratory support was defined as intubation, CPAP, BiPAP, continuous external
201 negative pressure, or high flow nasal cannula. Controls were also non-hospitalized
202 Covid-19 infected individuals. Details of the three phenotypes are found in **Table 1** and
203 **Supplement 1**. Details of the UKB GWAS are found in **Supplement 2**.

204

205 *Primary MR analysis*

206 The effect of 25OHD level on Covid-19 outcomes was obtained for each SNP by using
207 the Wald ratio method. The effect of each SNP was given in standardized log-
208 transformed 25OHD level. Each estimate was first meta-analyzed using the IVW
209 method, and then using MR Egger to provide an estimate of directional pleiotropic
210 effects. Allele harmonization and computations were performed using the
211 TwoSampleMR package³⁰.

212

213 *Horizontal pleiotropy sensitivity analysis*

214 We undertook extensive analysis to assess the risk of horizontal pleiotropy (in violation
215 of the second MR assumption). First, we used MR Egger methods. MR Egger allows for
216 an additional intercept (alpha) term which provides an estimate of directional horizontal
217 pleiotropy.

218

219 Second, we restricted our choices of SNPs to those whose closest gene is directly
220 involved in the Vitamin D pathway. These genes have an established role in vitamin D
221 regulation through its synthesis (*DHCR7/NADSYN1* and *CYP2R1*), transportation (*GC*),
222 and degradation (*CYP24A1*) (**Figure 1**). This decreases the risk of selecting a genetic
223 variant that effects Covid-19 outcomes independent of their effect on 25OHD levels.

224

225 Third, we used the Phenoscanner tool^{31,32} on the remaining SNPs to check for variants
226 associated (at a genome-wide significant threshold of $p=5 \times 10^{-8}$) with phenotypes at risk
227 of affecting Covid-19 outcomes independent of 25OHD, making them at higher risk of
228 horizontal or vertical pleiotropy. Note that vertical pleiotropy, which happens when the
229 Covid-19 outcome is influenced by a phenotype directly in the causal pathway between
230 25OHD level and Covid-19 outcome, does not violate MR assumptions.

231

232 *Extended Phenotypes*

233 Finally, we also used an extended susceptibility, an extended hospitalized, and an
234 extended severe disease phenotype whereas controls were defined as all non-cases in
235 the included cohorts. MR analyses were performed as described above. Details of these
236 phenotypes and the MR results are found in **Supplement 2**.

237

238 *Research Ethics*

239 Each cohort included in this study received their respective institutional research ethics
240 board approval to enroll patients. All information used for this study are publicly available
241 as deidentified GWAS summary statistics.

242

243 **Results**

244 *Choice of 25OHD genetic instruments*

245 We obtained our 25OHD genetic instruments from our previously published GWAS²⁴ on
246 circulating 25OHD levels in 401,460 white British participants in the UK Biobank (UKB)³³,
247 which was meta-analyzed with a GWAS on 25OHD levels of 42,274 participants of
248 European ancestry³⁴. From this, we used single nucleotide variants (SNPs) from the

249 conditional and joint (COJO) analysis²⁶. Of the 138 reported conditionally independent
250 SNPs (explaining 4.9% of the 25OHD variance), 100 had a minor allele frequency of
251 more than 1%. These explained 3.9% of the variance in 25OHD serum levels.

252

253 *Covid-19 outcome definitions and GWASs*

254 Using the Covid-19 Host Genetics Initiative (Covid-19 HGI) results restricted to cohorts
255 of European ancestry, we used a total of 3,432 cases and 41,285 controls to define
256 Covid-19 susceptibility, 867 cases and 2,229 controls to define Covid-19 hospitalization,
257 and 293 cases and 607 controls to define Covid-19 severe disease. **Table 1** summarizes
258 the definition and sample size of both the exposure and outcome GWASs. Since the
259 UKB was used in the two phases of the MR study, some overlap between the exposure
260 and the outcome GWASs was unavoidable (**Supplement 1**).

261

262 For the susceptibility and severe disease phenotypes, 98 of the 138 conditionally
263 independent SNPs influencing 25OHD level were available in the outcome GWAS. For
264 the severe disease outcome, 97 SNPs were available in the outcome GWAS. There was
265 a total of 4 palindromic alleles with intermediate frequencies. Genetic proxies (linkage
266 disequilibrium $r^2 > 90\%$) found in the European sub-cohort of the 1000 Genomes dataset
267 were also unavailable in the outcome GWAS, and no proxies were used for the analyses
268 below. **Table 2** shows the total number of SNP instruments used for each analysis.

269

270 *Primary MR analysis*

271 We first used inverse-weighted variance (IVW) meta-analysis to combine effect
272 estimates from each genetic instrument. For a standard deviation increase in log-
273 transformed 25OHD level, we observed no clear effect upon odds of susceptibility (OR =
274 0.88; 95% CI: 0.69, 1.11; P = 0.26). However, we observed an increased risk of
275 hospitalization per standard deviation increase in log-transformed 25OHD (OR = 2.34;
276 95% CI: 1.33, 4.11; P = 0.003) and trend towards increased risk of severe disease (OR
277 = 2.21; 95% CI: 0.88, 5.55; P = 0.09) (**Table 2**). **Figure 2** shows the result of these
278 analyses.

279

280 *Horizontal pleiotropy sensitivity analysis*

281 While MR Egger has less statistical power to detect an effect than IVW meta-analysis,
282 we still found similar effect estimates for increased 25OHD levels on susceptibility (OR =
283 0.61; 95% CI: 0.37, 1.01; P=0.7), hospitalization (OR = 1.97; 95% CI: 0.66, 5.84;
284 P=0.24) and severe disease (OR = 7.68; 95% CI: 1.35, 43.5; P=0.03). MR Egger did not
285 show evidence of directional pleiotropic effects for these analyses.

286

287 Then, we restricted SNPs which reside close to the four genes directly involved in
288 25OHD metabolism. This left 24 SNPs, explaining 2.7% of 25OHD variation. Using these
289 SNPs, each standard deviation increase in log-transformed 25OHD was not associated
290 with a clear effect on Covid-19 susceptibility (OR = 0.90; 95% CI: 0.64, 1.27; P = 0.55).
291 However, we again observed a trend towards increased odds of hospitalization for each
292 standard deviation increase in 25OHD levels on the logarithmic scale (OR = 2.52 [95%
293 CI: 1.28, 4.95]; P = 0.007) and severe disease (OR = 3.04; 95% CI: 1.06, 8.76; P =
294 0.04). For the three phenotypes, the intercept term confidence interval crossed the null,
295 again suggesting a lack of directional horizontal pleiotropy.

296

297 Lastly, we used the Phenoscanner^{31,32} tool to check if the SNPs used in the MR study
298 were associated with other phenotypes. Using Phenoscanner, rs11723621 was
299 associated with white blood cell level, and rs6127099 was associated with glomerular

300 filtration rate. In both cases, the effect on each phenotype was mild compared to their
301 effect on 25OHD level, as rs11723621 explained less than 0.03% of the variance in
302 white blood cell counts, and rs6127099 explained less than 0.001% of the glomerular
303 filtration rate variance^{35,36}. Removing these SNPs from the 24 SNPs above further
304 decreased the proportion of 25OHD variance explained to 1.6%. While confidence
305 intervals widened, effect estimates when restricting our analysis to these 22 SNPs
306 remained similar for susceptibility (0.77; 95% CI: 0.48, 1.23; P=0.27), hospitalization
307 (2.89; 95% CI: 1.18, 7.06; P=0.02), and severe disease (2.52; 95% CI: 0.63, 10.0;
308 P=0.19).

309

310 *Extended Phenotypes*

311 Next, we used an extended definition for all three outcomes, where controls were
312 defined as all non-cases in each cohort, regardless of whether the Covid-19 status was
313 known or not. For these we obtained 6,182 cases and 960,186 controls for the extended
314 susceptibility phenotype, 2,710 cases and 813,234 controls for the extended
315 hospitalization phenotype, and 540 cases and 366,840 controls for the extended severe
316 disease phenotype. MR analysis using the extended phenotypes showed similar results
317 for Covid-19 susceptibility (**Supplement 2**), but their confidence intervals and effect
318 estimates were closer to the null in the extended hospitalization phenotype. For
319 example, for the analysis restricted to genes directly involved in vitamin D metabolism,
320 we obtained a much smaller OR (1.08; 95% CI: 0.69, 1.69; P = 0.74). However, the three
321 extended severe disease analyses showed worse outcome with increasing 25OHD
322 levels.

323

324 **Discussion**

325 In this large-scale MR study, we found that genetically increased 25OHD levels did not
326 protect against Covid-19 susceptibility, or severity, and in some analyses was
327 associated with worsened outcomes. These findings therefore do not support vitamin D
328 supplementation to prevent Covid-19 outcomes. These results provide guidance on the
329 use of vitamin D supplementation, given that a large proportion of the elderly population
330 currently takes vitamin D supplements. Further, these results should inform the design of
331 vitamin D supplementation trials, which should include attempt to identify signals of harm
332 in interim analyses.

333

334 These results are not consistent with those reported in observational studies on vitamin
335 D and Covid-19 outcomes. The discrepancy between our results and traditional
336 epidemiological studies on Covid-19 and 25OHD can likely be explained by the fact that
337 25OHD is a highly confounded variable. It is consistently associated with an older, more
338 vulnerable, and more socially isolated population, all strong determinants of Covid-19
339 disease susceptibility and severity. Therefore, even when using advanced statistical
340 adjustments, observational epidemiological studies will likely obtain biased estimates of
341 the effect of vitamin D on Covid-19 in favor of increased 25OHD level. These same
342 limitations may explain the discrepancy between 25OHD observational epidemiology
343 outcomes and RCTs of vitamin D supplementation for common diseases, such as
344 coronary heart disease, cancer, fracture and type 2 diabetes. Further, while vitamin D
345 deficiency has been associated with enhanced inflammation and cytokine release³⁷, the
346 concept of “cytokine storm” in sepsis is poorly defined, and is currently being
347 reconsidered, including in the case of Covid-19³⁸.

348

349 Most importantly, 25OHD MR studies have given results consistent with RCTs in the
350 colorectal cancer^{10,12,19}, diabetes^{11,18}, bone density and fractures^{20,39,40}, coronary artery

351 disease^{10,21}, and many other health outcomes. Our study would also be consistent with a
352 2015 RCT on 25OHD supplementation in the prevention of respiratory tract infection⁷,
353 which showed more upper respiratory tract infections and longer duration of symptoms
354 in those randomized to 25OHD supplements. While this RCT was not powered for more
355 severe outcomes and may not apply to the case of the Covid-19 pandemic, this further
356 highlights the potential role of MR studies to guide future 25OHD supplementation trials.

357
358 To date, there are more than 15 trials registered on clinicaltrials.gov assessing the role
359 of 25OHD supplementation in Covid-19, with a wide variety of study designs and primary
360 outcomes. The two largest RCTs are both placebo-controlled trial but have not yet
361 started recruitment. The first will be trial of a 2,414 participants, for which
362 supplementation will be given to healthy Canadian healthcare workers⁴¹, while the
363 second is planned for 1,265 participants in Argentina admitted for Covid-19, but who
364 have not yet developed severe disease⁴². The two trials' primary outcome therefore
365 corresponds to our susceptibility and severe disease phenotypes, and our results should
366 be able to better inform their design and ensure their participants' safety.

367
368 Our findings also have important implication for large proportion of the elderly population
369 who are already taking 25OHD supplements⁹. As the evidence for 25OHD
370 supplementation is growing weaker for many other diseases, and with potential adverse
371 events during the Covid-19 pandemic, official public health recommendations should be
372 adjusted to discourage liberal use of 25OHD supplements to protect against Covid-19
373 outcomes.

374
375 Our study has limitations. First, we obtained discrepant results in the hospitalization and
376 extended hospitalization phenotypes. That is, the extended hospitalization MRs did not
377 show any increased risk from a genetically higher 25OHD level. However, hospitalization
378 is a "softer", more subjective outcome than severe disease, and we expect large
379 variations in hospitalization criteria between cohorts, given differences in admission
380 criteria by country. Further, by extending the hospitalization control definition to all
381 individuals without a record of Covid-19 (including those who did not have a test or
382 whose result is unavailable), we expect that the cohorts included in the extended
383 hospitalization phenotype were even more heterogeneous. Hence, the extended
384 hospitalization phenotype results were likely biased towards the null. Nevertheless, our
385 results did not show any benefit from increasing 25OHD levels, and our concerns about
386 vitamin D supplementation remain valid for severe disease outcomes. Second, the UKB
387 was the largest case contributor in the hospitalization phenotype, and the only
388 contributor of the severe disease phenotype. Therefore, for these phenotypes, our MR
389 analyses were closer to one-sample MRs. This distinction is important in analyses
390 suffering from weaker genetic instruments, as the estimate will be biased. In two-sample
391 MR, this bias is towards the null hypothesis. However, in one-sample MR, the bias is in
392 the direction of the epidemiologic association²⁵. Yet, univariate epidemiological
393 association studies between 25OHD and Covid-19 severe disease have demonstrated a
394 slight benefit to higher 25OHD levels in the UKB cohort^{43,44}. Therefore, if the one-sample
395 MR design introduced any bias, it would be to pull our results closer towards the
396 beneficial effects. Nevertheless, in the extended severe disease phenotype, which
397 incorporated data from an additional cohort with 327 cases, and the results were similar
398 to the severe disease phenotype from UKB with a severe disease odds ratio of 2.39
399 (95% CI: 1.15, 4.96; P = 0.02) for every standard deviation increase in log transformed
400 25OHD (for the analysis restricted to genes directly involved in the 25OHD metabolism).

401

402 Third, we were only able to include individuals of European ancestry, and it remains
403 possible that 25OHD levels might have different effects on Covid-19 outcomes in other
404 populations. However, previous RCTs on vitamin D supplementation have given similar
405 results in populations of various ancestries^{39,40}. Our study did not consider frank vitamin
406 D deficiency, and it remains possible that vitamin D supplementation may remain
407 beneficial in this population. Nevertheless, most proposed RCTs of vitamin D
408 supplementation for Covid-19 (including the largest two) do not target deficient
409 populations^{41,42}. Lastly, while we performed multiple sensitivity analyses to attempt to
410 detect horizontal pleiotropy, this source of potential bias cannot be entirely excluded.

411

412 In conclusion, using a method that has consistently replicated RCT results for 25OHD
413 outcomes in large sample sizes, we find no evidence to support a protective role for
414 vitamin D supplementation in Covid-19 outcomes. Our findings also suggest that all on-
415 going RCTs studying vitamin D supplementation should have mechanisms in place to
416 detect early signs of worsened outcomes, and that public health recommendations
417 should advise more caution about taking 25OHD supplements.

418

419 **Acknowledgement**

420 We thank the patients and investigators who contributed to the Covid-19 HGI
421 (**Supplement 4**) and the Vitamin D GWAS consortium. Members of the GEN-COVID
422 study are acknowledged in **Supplement 5**.

423

424 **Contributions**

425 Conception and design: GBL, TN, JBR. Data acquisition and standardization: AR, AG,
426 DRM, TA, OA, NM, NK, ZA. Data analyses: GBL and TN. Interpretation: GBL, TN, VM,
427 DRM, TA, OA, NM, NK, ZA, AR, AG, SZ, YC, VF, JBR. Computational resources and
428 support: VF, JBR. Writing original draft: GBL, TN, JBR. All authors were involved in
429 reviewing the manuscript and critically reviewed its content. All authors gave final
430 approval of the version to be published. The corresponding author attests that all listed
431 authors meet authorship criteria and that no others meeting the criteria have been
432 omitted.

433

434 **Data availability**

435 Covid-19 outcome GWAS summary statistics are freely available for download through
436 the Covid-19 HGI website (<https://www.covid19hg.org/>).

437

438 **Funding source:** The Richards research group is supported by the Canadian Institutes
439 of Health Research (CIHR), the Lady Davis Institute of the Jewish General Hospital, the
440 Canadian Foundation for Innovation, the NIH Foundation, Cancer Research UK and the
441 Fonds de Recherche Québec Santé (FRQS). TN is supported by Research Fellowships
442 of Japan Society for the Promotion of Science (JSPS) for Young Scientists and JSPS
443 Overseas Challenge Program for Young Researchers. JBR is supported by a FRQS
444 Clinical Research Scholarship. TwinsUK is funded by the Wellcome Trust, Medical
445 Research Council, European Union, the National Institute for Health Research (NIHR)-
446 funded BioResource, Clinical Research Facility and Biomedical Research Centre based
447 at Guy's and St Thomas' NHS Foundation Trust in partnership with King's College
448 London. These funding agencies had no role in the design, implementation or
449 interpretation of this study. This research has been conducted using the UK Biobank
450 Resource (project number: 27449).

451

452 **Competing interests:** JBR has served as an advisor to GlaxoSmithKline and Deerfield
453 Capital. These companies had no role in the design, implementation or interpretation of
454 this study.

455

456 **Transparency statement:** The manuscript's guarantors affirm that the manuscript is an
457 honest, accurate, and transparent account of the study being reported; that no important
458 aspects of the study have been omitted; and that any discrepancies from the study as
459 planned have been explained.

460

461 **Supplementary files captions**

462 **Supplement 1:** Cohorts used for each outcome phenotype for the Covid-19 Host
463 Genetics Initiative.

464 **Supplement 2:** Genome-wide association studies for the susceptibility and the severity
465 of SARS-CoV-2 infections in UK Biobank.

466 **Supplement 3:** Extended phenotypes definitions and MR results.

467 **Supplement 4:** Acknowledgement to data contributors and the Covid-19 Host Genetics
468 Initiative.

469 **Supplement 5:** GEN-COVID Multicenter Study

470

471

References

- 472 1. McKee, M. & Stuckler, D. If the world fails to protect the economy, COVID-19 will
473 damage health not just now but also in the future. *Nat. Med.* **26**, 640–642 (2020).
- 474 2. Koirala, A., Joo, Y. J., Khatami, A., Chiu, C. & Britton, P. N. Vaccines for COVID-
475 19: The current state of play. *Paediatr. Respir. Rev.* (2020)
476 doi:10.1016/j.prrv.2020.06.010.
- 477 3. Mansur, J. L. *et al.* Vitamin D high doses supplementation could represent a
478 promising alternative to prevent or treat COVID-19 infection. *Clin. e Investig. en*
479 *Arterioscler. Publ. Of. la Soc. Esp. Arterioscler.* (2020)
480 doi:10.1016/j.arteri.2020.05.003.
- 481 4. Charoenngam, N. & Holick, M. F. Immunologic Effects of Vitamin D on Human
482 Health and Disease. *Nutrients* **12**, (2020).
- 483 5. Marcos-Pérez, D. *et al.* Low Vitamin D Levels and Frailty Status in Older Adults: A
484 Systematic Review and Meta-Analysis. *Nutrients* **12**, (2020).
- 485 6. Skrobot, A., Demkow, U. & Wachowska, M. Immunomodulatory Role of Vitamin
486 D: A Review. *Adv. Exp. Med. Biol.* **1108**, 13–23 (2018).
- 487 7. Martineau, A. R. & Forouhi, N. G. Vitamin D for COVID-19: a case to answer?
488 *Lancet Diabetes Endocrinol.* (2020) doi:10.1016/S2213-8587(20)30268-0.
- 489 8. Munshi, R. *et al.* Vitamin D insufficiency as a potential culprit in critical COVID-19
490 patients. *J. Med. Virol.* (2020) doi:10.1002/jmv.26360.
- 491 9. Rooney, M. R. *et al.* Trends in Use of High-Dose Vitamin D Supplements
492 Exceeding 1000 or 4000 International Units Daily, 1999-2014. *JAMA* **317**, 2448–
493 2450 (2017).
- 494 10. Manson, J. E. *et al.* Vitamin D Supplements and Prevention of Cancer and
495 Cardiovascular Disease. *N. Engl. J. Med.* **380**, 33–44 (2019).
- 496 11. Pittas, A. G. *et al.* Vitamin D Supplementation and Prevention of Type 2 Diabetes.
497 *N. Engl. J. Med.* **381**, 520–530 (2019).
- 498 12. Wactawski-Wende, J. *et al.* Calcium plus vitamin D supplementation and the risk
499 of colorectal cancer. *N. Engl. J. Med.* **354**, 684–696 (2006).
- 500 13. Sanders, K. M. *et al.* Annual High-Dose Oral Vitamin D and Falls and Fractures in
501 Older Women: A Randomized Controlled Trial. *JAMA* **303**, 1815–1822 (2010).
- 502 14. Martineau, A. R. *et al.* Double-blind randomised controlled trial of vitamin D3
503 supplementation for the prevention of acute respiratory infection in older adults
504 and their carers (ViDiFlu). *Thorax* **70**, 953 LP – 960 (2015).
- 505 15. Ginde, A. A. *et al.* Early High-Dose Vitamin D(3) for Critically Ill, Vitamin D-
506 Deficient Patients. *N. Engl. J. Med.* **381**, 2529–2540 (2019).
- 507 16. Davies, N. M., Holmes, M. V & Davey Smith, G. Reading Mendelian
508 randomisation studies: a guide, glossary, and checklist for clinicians. *BMJ* **362**,
509 k601 (2018).
- 510 17. Hysinger, E. B. *et al.* Mendelian randomization analysis demonstrates that low
511 vitamin D is unlikely causative for pediatric asthma. *J. Allergy Clin. Immunol.* **138**,
512 1747-1749.e4 (2016).
- 513 18. Ye, Z. *et al.* Association between circulating 25-hydroxyvitamin D and incident
514 type 2 diabetes: a mendelian randomisation study. *Lancet Diabetes Endocrinol.* **3**,
515 35–42 (2015).
- 516 19. He, Y. *et al.* Exploring causality in the association between circulating 25-
517 hydroxyvitamin D and colorectal cancer risk: a large Mendelian randomisation
518 study. *BMC Med.* **16**, 142 (2018).
- 519 20. Trajanoska, K. *et al.* Assessment of the genetic and clinical determinants of
520 fracture risk: genome wide association and mendelian randomisation study. *BMJ*
521 **362**, k3225 (2018).

- 522 21. Despoina, M., E., M. L., Stephanie, R., David, G. & Brent, R. J. Mendelian
523 Randomization Studies Do Not Support a Role for Vitamin D in Coronary Artery
524 Disease. *Circ. Cardiovasc. Genet.* **9**, 349–356 (2016).
- 525 22. Davey Smith, G. & Ebrahim, S. ‘Mendelian randomization’: can genetic
526 epidemiology contribute to understanding environmental determinants of
527 disease?*. *Int. J. Epidemiol.* **32**, 1–22 (2003).
- 528 23. Mokry, L. E. *et al.* Vitamin D and Risk of Multiple Sclerosis: A Mendelian
529 Randomization Study. *PLOS Med.* **12**, e1001866 (2015).
- 530 24. Manousaki, D. *et al.* Genome-wide Association Study for Vitamin D Levels
531 Reveals 69 Independent Loci. *Am. J. Hum. Genet.* **106**, 327–337 (2020).
- 532 25. Lawlor, D. A. Commentary: Two-sample Mendelian randomization: opportunities
533 and challenges. *Int. J. Epidemiol.* **45**, 908–915 (2016).
- 534 26. Yang, J. *et al.* Conditional and joint multiple-SNP analysis of GWAS summary
535 statistics identifies additional variants influencing complex traits. *Nat. Genet.* **44**,
536 369–S3 (2012).
- 537 27. Machiela, M. J. & Chanock, S. J. LDlink: a web-based application for exploring
538 population-specific haplotype structure and linking correlated alleles of possible
539 functional variants. *Bioinformatics* **31**, 3555–3557 (2015).
- 540 28. Initiative, T. C.-19 H. G. The COVID-19 Host Genetics Initiative, a global initiative
541 to elucidate the role of host genetic factors in susceptibility and severity of the
542 SARS-CoV-2 virus pandemic. *Eur. J. Hum. Genet.* **28**, 715–718 (2020).
- 543 29. Willer, C. J., Li, Y. & Abecasis, G. R. METAL: fast and efficient meta-analysis of
544 genomewide association scans. *Bioinformatics* **26**, 2190–2191 (2010).
- 545 30. Walker, V. M. *et al.* Using the MR-Base platform to investigate risk factors and
546 drug targets for thousands of phenotypes. *Wellcome open Res.* **4**, 113 (2019).
- 547 31. Staley, J. R. *et al.* PhenoScanner: a database of human genotype-phenotype
548 associations. *Bioinformatics* **32**, 3207–3209 (2016).
- 549 32. Kamat, M. A. *et al.* PhenoScanner V2: an expanded tool for searching human
550 genotype-phenotype associations. *Bioinformatics* **35**, 4851–4853 (2019).
- 551 33. Bycroft, C. *et al.* The UK Biobank resource with deep phenotyping and genomic
552 data. *Nature* **562**, 203–209 (2018).
- 553 34. Manousaki, D. *et al.* Low-Frequency Synonymous Coding Variation in CYP2R1
554 Has Large Effects on Vitamin D Levels and Risk of Multiple Sclerosis. *Am. J.*
555 *Hum. Genet.* **101**, 227–238 (2017).
- 556 35. Astle, W. J. *et al.* The Allelic Landscape of Human Blood Cell Trait Variation and
557 Links to Common Complex Disease. *Cell* **167**, 1415–1429.e19 (2016).
- 558 36. Wuttke, M. *et al.* A catalog of genetic loci associated with kidney function from
559 analyses of a million individuals. *Nat. Genet.* **51**, 957–972 (2019).
- 560 37. Daneshkhah, A. *et al.* The Possible Role of Vitamin D in Suppressing Cytokine
561 Storm and Associated Mortality in COVID-19 Patients. *medRxiv*
562 2020.04.08.20058578 (2020) doi:10.1101/2020.04.08.20058578.
- 563 38. Sinha, P., Matthay, M. A. & Calfee, C. S. Is a “Cytokine Storm” Relevant to
564 COVID-19? *JAMA Intern. Med.* (2020) doi:10.1001/jamainternmed.2020.3313.
- 565 39. Aloia, J. F., Talwar, S. A., Pollack, S. & Yeh, J. A randomized controlled trial of
566 vitamin D3 supplementation in African American women. *Arch. Intern. Med.* **165**,
567 1618–1623 (2005).
- 568 40. Aspray, T. J. *et al.* Randomized controlled trial of vitamin D supplementation in
569 older people to optimize bone health. *Am. J. Clin. Nutr.* **109**, 207–217 (2019).
- 570 41. Preventing COVID-19 With High-dose Vitamin D Supplements.
571 <https://clinicaltrials.gov/show/NCT04483635>.
- 572 42. Cholecalciferol to Improve the Outcomes of COVID-19 Patients.

- 573 <https://clinicaltrials.gov/show/NCT04411446>.
- 574 43. Hastie, C. E. *et al.* Vitamin D concentrations and COVID-19 infection in UK
575 Biobank. *Diabetes Metab. Syndr.* **14**, 561–565 (2020).
- 576 44. Hastie, C. E., Pell, J. P. & Sattar, N. Short Communication: Vitamin D and COVID-
577 19 infection and mortality in UK Biobank. *medRxiv* 2020.06.26.20140921 (2020)
578 doi:10.1101/2020.06.26.20140921.
579

Phenotype	Source of genetic variants	
	Cohort	Participants
25OHD circulating levels	Manousaki <i>et al</i> ²⁴	Meta-analysis of two 25OHD GWAS: <ul style="list-style-type: none"> - 401,460 adult white British participants from the UKB³³ - 42,274 from an international consortium of adult individuals of European ancestry³⁴
Covid-19 susceptibility	Susceptibility	Meta-analysis of 6 GWAS performed in individuals of European ancestry from 4 countries: <ul style="list-style-type: none"> - Cases: 3,432 individuals with Covid-19 by laboratory confirmation, chart review, or self-report - Controls: 41,285 individuals without Covid-19 by laboratory confirmation or self-report
Covid-19 severity	Hospitalized	Meta-analysis of 3 GWAS performed in individuals of European ancestry from 3 countries: <ul style="list-style-type: none"> Cases: 867 hospitalized individuals with Covid-19 Controls: 2,229 non-hospitalized individuals with Covid-19
	Severe Disease	GWAS from white British UKB participants: <ul style="list-style-type: none"> - Cases: 293 Covid-19 infected hospitalized individuals who died or required respiratory support (intubation, CPAP, BiPAP, continuous external negative pressure, high flow nasal cannula). - Controls: 607 non-hospitalized individuals with Covid-19

Table 1: Sources of data for the analysis. Covid-19 susceptibility and severity outcomes are taken from the Covid-19 HGI²⁸. See [Supplement 1](#) for details on cohorts of Covid-19 susceptibility and severity phenotypes.

Outcome	nSNPs	IVW OR (95% CI)	IVW p-value	Egger alpha	Alpha p-value	Egger OR (95% CI)	Egger p-value
25OHD primary analysis							
Susceptibility	96	0.88 (0.69, 1.11)	0.26	0.005 (-0.006, 0.02)	0.39	0.79 (0.57, 1.10)	0.16
Hospitalization	95	2.34 (1.33, 4.11)	0.003	-0.005 (-0.03, 0.02)	0.70	2.61 (1.18, 5.78)	0.02
Severe disease	96	2.21 (0.88, 5.55)	0.09	-0.03 (-0.07, 0.02)	0.27	3.78 (1.01, 14.1)	0.05
25OHD sensitivity analysis restricted to genes in the vitamin D pathway							
Susceptibility	21	0.90 (0.64, 1.27)	0.55	0.04 (-0.0001, 0.08)	0.07	0.61 (0.37, 1.01)	0.07
Hospitalization	21	2.52 (1.28, 4.95)	0.007	0.02 (-0.06, 0.11)	0.58	1.97 (0.66, 5.84)	0.24
Severe disease	21	3.04 (1.06, 8.76)	0.04	-0.09 (-0.21, 0.04)	0.20	7.68 (1.35, 43.5)	0.03
25OHD sensitivity analysis after removal of SNPs identified by Phenoscanner							
Susceptibility	19	0.77 (0.48, 1.23)	0.27	0.06 (0.01, 0.10)	0.02	0.38 (0.19, 0.75)	0.01
Hospitalization	19	2.89 (1.18, 7.06)	0.02	0.0005 (-0.10, 0.10)	0.99	2.87 (0.64, 12.9)	0.19
Severe disease	19	2.52 (0.63, 10.0)	0.19	-0.14 (-0.29, 0.006)	0.08	17.1 (1.50, 195)	0.04

Table 2: MR results. nSNPs: number of SNPs retained for this analysis. CI: confidence interval.

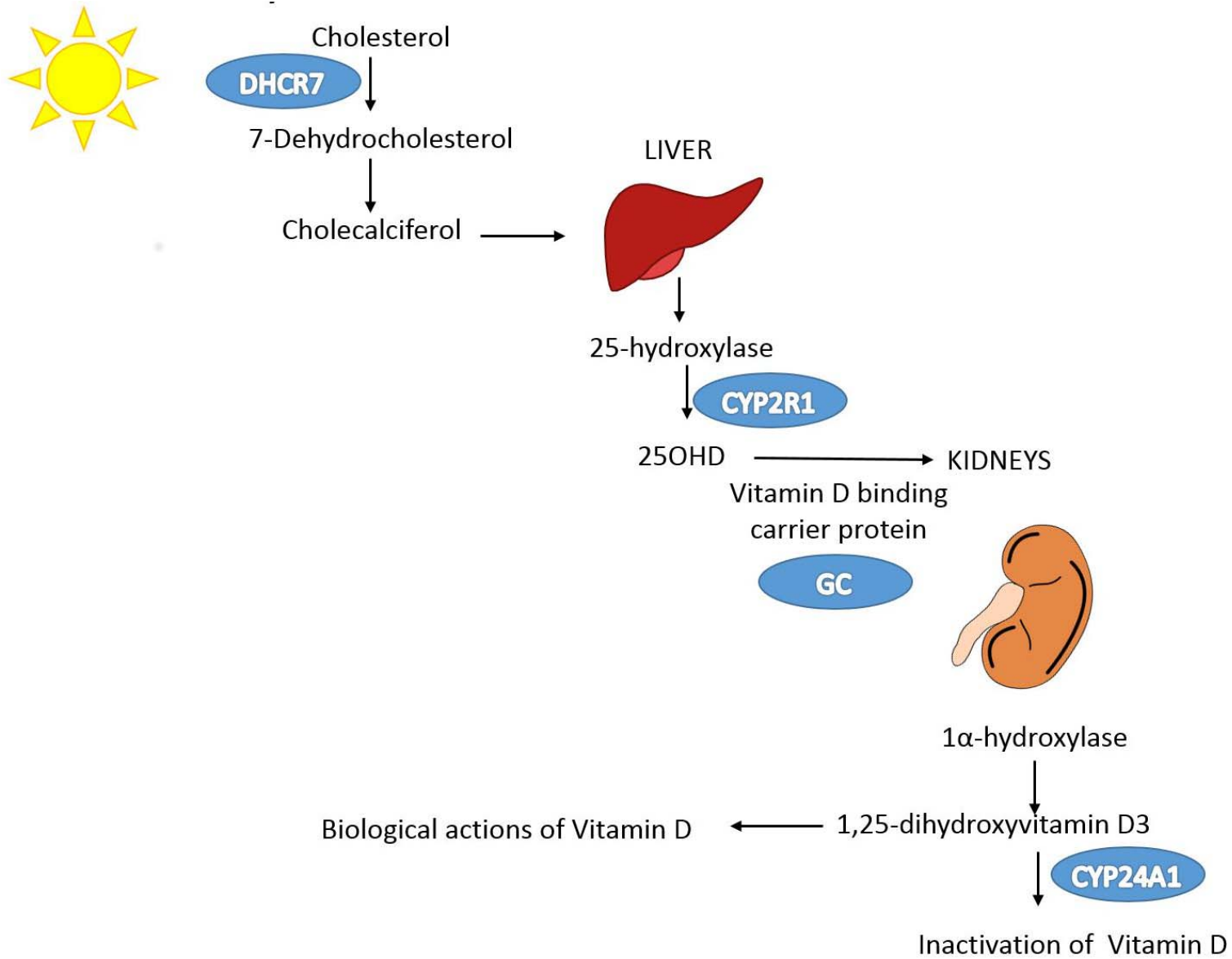


Figure 1: Vitamin D synthesis pathway.

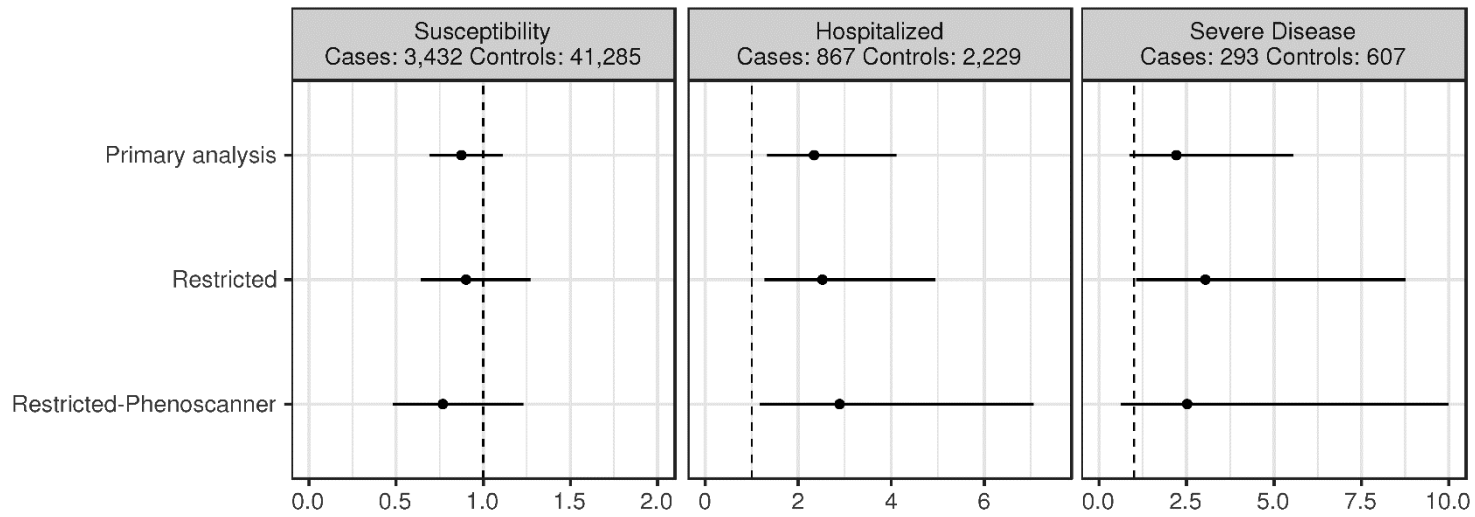


Figure 2: Odds ratio point estimates and 95% confidence intervals for a one standard deviation increase in 25OHD levels on Covid-19 susceptibility and severity. Restricted: analysis restricted to SNPs near the 4 genes involved in known vitamin D metabolic pathways. Restricted-Phenoscaner: restricted analysis, with SNPs identified to have other associations in Phenoscanner removed.