

Title: Characteristics of COVID-19 recurrence: a systematic review and meta-analysis

Running title: COVID-19 recurrence: a meta-analysis

Tung Hoang^{1,2}

¹ Institute of Research and Development, Duy Tan University, Da Nang 550000, Vietnam

² Faculty of Pharmacy, Duy Tan University, Da Nang 550000, Vietnam

Correspondence: Tung Hoang, MPH, BPharm.

1) Institute of Research and Development, Duy Tan University, Da Nang 550000, Vietnam

2) Faculty of Pharmacy, Duy Tan University, Da Nang 550000, Vietnam

2) Phone: 82-10-9820-7796

3) Email : hoangtung@duytan.edu.vn; hoangtung@gmail.com

Abstract

Background: Previous studies reported the recurrence of coronavirus disease 2019 (COVID-19) among discharge patients. This study aimed to examine the characteristic of repositive COVID-19 cases by performing a systematic review and meta-analysis.

Methods: A systematic search was performed in PubMed and Embase and gray literature up to August 17, 2020. A random-effects model was applied to obtain the pooled prevalence of RNA repositive among recovered patients and the prevalence of subjects underlying comorbidity among recurrence cases. The other characteristics were calculated based on the summary data of individual studies.

Results: A total of 37 studies were included in the final analysis, we have described the epidemiological characteristics of COVID-19 recurrence cases. Of 2,436 patients recovering from COVID-19 and being discharged, an estimate of 16% (95% CI, 12% to 20%) patients was repositive with SARS-CoV-2 during the follow-up. This proportion was 15% (95% CI, 11% to 18%) for China and 31% (95% CI, 26% to 37%) for Korea. Among recurrence cases, it was estimated 43% (95% CI, 31% to 55%) subjects underlying at least one comorbidity. The estimates for times from disease onset to admission, from admission to discharge, and from discharge to RNA positive conversion were 17.3, 16.7, and 10.5 days, respectively.

Conclusions: This study summarized up-to-date evidence from case reports, case series, and observational studies for the characteristic of COVID-19 recurrence cases after discharge. It is recommended to pay attention to follow-up patients after discharge, even if they have been in quarantine.

Keywords: COVID-19; prevalence; recurrence; meta-analysis

Introduction

Since December 2019, the world has been experiencing a public health crisis due to severe acute respiratory syndrome coronavirus-2 (SARS-CoV-2). As of September 01, 2020, about 26 million confirmed cases and 0.8 million deaths were reported from 213 countries and territories [1]. Several nationwide studies retrospectively investigated clinical features and the epidemiological characteristics of patients infected with SARS-CoV-2 [2-4]. Particularly, aging and underlying chronic diseases were reported to much contribute to the severity of coronavirus disease 2019 (COVID-19) [5,6]. However, patients with COVID-19 were generally less severe than SARS and Middle East respiratory syndrome (MERS), with the fatality rate of 9.6%, 34.3%, and 6.6% for SARS, MERS, and COVID-19, respectively [7]. Recently, it has been reported that SARS-CoV-2 RNA shedding duration could prolong up to 83 days [8]. In addition, the repositive SARS-CoV-2 RNA test has been observed among patients who had been discharged from health care units and received regular follow-up [8]. Therefore, this systematic review and meta-analysis was conducted to examine the prevalence of the RNA repositive test for SARS-CoV-2 among recovered patients, the prevalence of subjects underlying comorbidity among recurrence cases, in addition to times from disease onset to hospital admission, from admission to hospital discharge, and from discharge to positive RNA conversion.

Methods

An electronic search of PubMed and Embase was conducted for English language studies published from the inception until August 17, 2020. The keywords for searching were as follows: “(COVID-19 OR SARS-CoV-2) AND (recurrence OR recurrences OR reinfection OR re-infection)”. Additionally, hand searching for related reports of the Centers for Disease Controls

and bibliography of relevant studies was performed to obtain relevant information. For each study, the following information was extracted: first author's name, country, study type, number of recurrence cases and discharged patients, the sample used for reverse transcription polymerase chain reaction (RT-PCR), mean or median age (years), number of males, females, and cases underlying any chronic diseases (including chronic obstructive pulmonary disease, cardiovascular disease, hypertension, diabetes, liver or kidney disease, and cancer), times from disease onset to admission, from admission to discharge, and from discharge to positive conversion (days).

In this study, heterogeneity was quantified by the I^2 statistics, in which $I^2 > 50\%$ was defined as potential heterogeneity [9]. Given data are from different populations of various characteristics, a random-effects model was used to calculate the pooled effect size and its 95% confidence interval (CI) when the evidence from at least two individual studies was available [10]. All the statistical analyses were performed using STATA 14.0 software.

Results

The study selection process is presented in **Figure 1**. Initial 550 records were retrieved through PubMed (N=239) and Embase (N=311) and additional 1 gray literature through hand searching was identified. Among records after removing duplicates and non-English publications (N=128), 423 studies were potentially relevant through reviewing titles and abstracts. After reviewing full-text articles, 15 studies were excluded because they reported overlapping cases (N=6) or irrelevant population (N=3), there was no information for outcomes of interest (N=4), and they were studies of mechanisms or modeling (N=2). The remaining 37 studies were therefore eligible for the final analysis [11-47].

A detailed description of extracted data of included studies is shown in **Table 1**. Thirty-eight studies reported 466 recurrence cases from China (N=30, 346 cases), Korea (N=1, 83 cases), Iran (N=1, 1 case), Italy (N=2, 3 cases), France (N=1, 11 cases), Brazil (N=1, 1 case), and US (N=1, 1 case). The study design included case reports (N=14), case series (N=5), and observational studies (N=18).

The calculation of the epidemiological characteristics of COVID-19 recurrence cases is presented in **Table 2**. Data for age were provided from 31 studies for 276 recurrence cases, with a mean age of 45.4 years. Among 363 recurrence cases from 34 studies, 158 cases were males, which accounted for 43.5%. Times from disease onset to admission, from admission to discharge, and from discharge to RNA positive conversion were available for 116, 101, 285 cases from 15, 17, and 26 studies, respectively. The estimates for times from disease onset to admission, from admission to discharge, and from discharge to RNA positive conversion were 17.3, 16.7, and 10.5 days, respectively.

The prevalence of COVID-19 recurrence cases after discharge was calculated from data of 18 observational studies (**Figure 2**). Among 2,436 discharged patients, the RT-PCR test turned to be positive in 324 Chinese and 83 Korean subjects. Overall, the prevalence of recurrence cases was 16% (95% CI, 12% to 20%). Substantial heterogeneity among studies was observed, with I^2 of 83.08%. In the subgroup analysis by population, the prevalence was reported to be 15% (95% CI, 11% to 18%) for China and 31% (95% CI, 26% to 37%) for Korea.

Furthermore, it was reported 55 subjects underlying comorbidity among a total of 121 recurrence cases, which accounted for 43% (95% CI, 31% to 55%) (**Figure 3**). There was no evidence of heterogeneity ($I^2=41.09\%$). Subgroup analysis showed the proportion of 64% (95% CI, 35% to 85%) for France cases and 40% (28% to 53%) for Chinese cases.

Discussion

In this systematic review and meta-analysis of 37 studies, we have described the epidemiological characteristics of COVID-19 recurrence cases. Of 2,436 patients recovering from COVID-19 and being discharged, an estimate of 16% (95% CI, 12% to 20%) of patients was repositive with SARS-CoV-2 during the follow-up. This proportion was 15% (95% CI, 11% to 18%) for China and 31% (95% CI, 26% to 37%) for Korea. Among recurrence cases, it was estimated 43% (95% CI, 31% to 55%) subjects underlying at least one comorbidity.

According to the guidelines of the World Health Organization, a patient can be discharged from the hospital after two consecutive negative results in a clinically recovered patient at least 24 hours apart [48]. However, the discharge criteria for confirmed COVID-19 cases are additionally required according to different countries [49]. The determination of recurrence cases can be caused by false negatives, which ranged from 2% to 29% according to a meta-analysis of 957 hospitalized patients [50]. The reason for false negatives can be due to the source of specimens, sampling procedure, and the sensitivity and specificity of the test kit [8]. In a preprint study of 213 Chinese patients, a total of 205 throat swabs, 490 nasal swabs, and 142 sputum samples were collected, and the false-negative rates were reported of 40%, 27%, and 11% for the throat, nasal, and sputum samples, respectively [51]. Due to the lack of individual data, we were not able to examine the prevalence of recurrence cases in the subgroup analysis by types of specimens.

Furthermore, it may require considering prolonged SARS-CoV-2 shedding in asymptomatic or mild cases and recurrence of viral shedding [52]. Data from 68 patients revealed a significantly longer duration of viral shedding from sputum specimens (34 days) than nasopharyngeal swabs (19 days) [53]. Consistent findings were reported in an asymptomatic case with viral detection

positive in stool but negative in nasopharyngeal swab lasts for 42 days [54]. Similarly, the positive rate of the SARS-CoV-2 RNA test was shown to be highest for the sputum sample (100%), followed by nasal swab (75%), oral swab (40%), and stool specimen (38%) [28]. Nevertheless, although the RT-PCT results of discharge patients were possible to turn positive, it is necessary to distinguish between reactivation and reinfection cases [8].

This study summarized up-to-date evidence from case reports, case series, and observational studies for the characteristic of COVID-19 recurrence cases after discharge. However, several limitations need to be mentioned. First, 81% of the included studies (30/37) with 74% recurrence cases (346/466) come from the Chinese population, which may reduce the availability to generalize the pooled estimates into other populations. Second, heterogeneity for the prevalence of recurrence cases was substantially presented among studies. The different characteristics, discharge criteria, and the test samples used among study populations included in this meta-analysis may have contributed to the heterogeneity. Last, all the estimates in the current study are based on aggregate data from published articles. Failure to obtain individual patient data may lead to bias due to the lack of full exploration and adjustment for patient characteristics [55].

In summary, an estimate of 16% of COVID-19 patients was repositive after discharge. Among them, 43% of subjects were underlying comorbidity. It is recommended to pay attention to follow-up patients after discharge by closely monitoring their RT-PCR results, even if they have been in quarantine for 14 days. Further studies are needed to determine factors associated with positive RT-PCR in COVID-19 patients after discharge.

Conflict of interest: None.

Funding: None.

Reference

1. Worldometer. COVID-19 coronavirus pandemic. Available online: <https://www.worldometers.info/coronavirus/> (accessed on September 01, 2020).
2. Sung, H.K.; Kim, J.Y.; Heo, J.; Seo, H.; Jang, Y.S.; Kim, H.; Koh, B.R.; Jo, N.; Oh, H.S.; Baek, Y.M., et al. Clinical course and outcomes of 3,060 patients with coronavirus disease 2019 in Korea, January-May 2020. *J Korean Med Sci* **2020**, *35*, e280, doi:10.3346/jkms.2020.35.e280.
3. Yoneoka, D.; Kawashima, T.; Tanoue, Y.; Nomura, S.; Ejima, K.; Shi, S.; Eguchi, A.; Taniguchi, T.; Sakamoto, H.; Kunishima, H., et al. Early SNS-based monitoring system for the COVID-19 outbreak in Japan: a population-level observational study. *J Epidemiol* **2020**, *30*, 362-370, doi:10.2188/jea.JE20200150.
4. Guan, W.J.; Ni, Z.Y.; Hu, Y.; Liang, W.H.; Ou, C.Q.; He, J.X.; Liu, L.; Shan, H.; Lei, C.L.; Hui, D.S.C., et al. Clinical characteristics of coronavirus disease 2019 in China. *N Engl J Med* **2020**, *382*, 1708-1720, doi:10.1056/NEJMoa2002032.
5. Nandy, K.; Salunke, A.; Pathak, S.K.; Pandey, A.; Doctor, C.; Puj, K.; Sharma, M.; Jain, A.; Warikoo, V. Coronavirus disease (COVID-19): A systematic review and meta-analysis to evaluate the impact of various comorbidities on serious events. *Diabetes Metab Syndr* **2020**, *14*, 1017-1025, doi:10.1016/j.dsx.2020.06.064.
6. Kang, S.J.; Jung, S.I. Age-related morbidity and mortality among patients with COVID-19. *Infect Chemother* **2020**, *52*, 154-164, doi:10.3947/ic.2020.52.2.154.
7. Toyoshima, Y.; Nemoto, K.; Matsumoto, S.; Nakamura, Y.; Kiyotani, K. SARS-CoV-2 genomic variations associated with mortality rate of COVID-19. *J Hum Genet* **2020**, doi:10.1038/s10038-020-0808-9, doi:10.1038/s10038-020-0808-9.

8. Hoang, V.T.; Dao, T.L.; Gautret, P. Recurrence of positive SARS-CoV-2 in patients recovered from COVID-19. *Journal of medical virology* **2020**, 10.1002/jmv.26056, doi:10.1002/jmv.26056.
9. Higgins, J.P.; Thompson, S.G.; Deeks, J.J.; Altman, D.G. Measuring inconsistency in meta-analyses. *BMJ* **2003**, 327, 557-560, doi:10.1136/bmj.327.7414.557.
10. DerSimonian, R.; Kacker, R. Random-effects model for meta-analysis of clinical trials: an update. *Contemp Clin Trials* **2007**, 28, 105-114, doi:10.1016/j.cct.2006.04.004.
11. Alonso, F.O.M.; Sabino, B.D.; Guimarães, M.; Varella, R.B. Recurrence of SARS-CoV-2 infection with a more severe case after mild COVID-19, reversion of RT-qPCR for positive and late antibody response: Case report. *Journal of medical virology* **2020**, 10.1002/jmv.26432, doi:10.1002/jmv.26432.
12. An, J.; Liao, X.; Xiao, T.; Qian, S.; Yuan, J.; Ye, H.; Qi, F.; Shen, C.; Liu, Y.; Wang, L., et al. Clinical characteristics of the recovered COVID-19 patients with re-detectable positive RNA test. *medRxiv* **2020**, 10.1101/2020.03.26.20044222, doi:10.1101/2020.03.26.20044222.
13. Batisse, D.; Benech, N.; Botelho-Nevers, E.; Bouiller, K.; Collarino, R.; Conrad, A.; Gallay, L.; Goehringer, F.; Gousseff, M.; Joseph, D.C., et al. Clinical recurrences of COVID-19 symptoms after recovery: viral relapse, reinfection or inflammatory rebound? *The Journal of infection* **2020**, 10.1016/j.jinf.2020.06.073, doi:10.1016/j.jinf.2020.06.073.
14. Bongiovanni, M.; Basile, F. Re-infection by COVID-19: a real threat for the future management of pandemia? *Infectious diseases (London, England)* **2020**, 52, 581-582, doi:10.1080/23744235.2020.1769177.

15. Cao, H.; Ruan, L.; Liu, J.; Liao, W. The clinical characteristic of eight patients of COVID-19 with positive RT-PCR test after discharge. *Journal of medical virology* **2020**, 10.1002/jmv.26017, doi:10.1002/jmv.26017.
16. Chen, D.; Xu, W.; Lei, Z.; Huang, Z.; Liu, J.; Gao, Z.; Peng, L. Recurrence of positive SARS-CoV-2 RNA in COVID-19: A case report. *International journal of infectious diseases : IJID : official publication of the International Society for Infectious Diseases* **2020**, 93, 297-299, doi:10.1016/j.ijid.2020.03.003.
17. Chen, Y.; Bai, W.; Liu, B.; Huang, J.; Laurent, I.; Chen, F.; Deng, W.; Xiao, X. Re-evaluation of retested nucleic acid-positive cases in recovered COVID-19 patients: Report from a designated transfer hospital in Chongqing, China. *Journal of infection and public health* **2020**, 13, 932-934, doi:10.1016/j.jiph.2020.06.008.
18. Duggan, N.M.; Ludy, S.M.; Shannon, B.C.; Reisner, A.T.; Wilcox, S.R. A case report of possible novel coronavirus 2019 reinfection. *The American journal of emergency medicine* **2020**, 10.1016/j.ajem.2020.06.079, doi:10.1016/j.ajem.2020.06.079.
19. Fu, W.; Chen, Q.; Wang, T. Letter to the Editor: three cases of redetectable positive SARS-CoV-2 RNA in recovered COVID-19 patients with antibodies. *Journal of medical virology* **2020**, 10.1002/jmv.25968, doi:10.1002/jmv.25968.
20. Gao, G.; Zhu, Z.; Fan, L.; Ye, S.; Huang, Z.; Shi, Q.; Sun, Y.; Song, Q. Absent immune response to SARS-CoV-2 in a 3-month recurrence of coronavirus disease 2019 (COVID-19) case. *Infection* **2020**, 10.1007/s15010-020-01485-6, 1-5, doi:10.1007/s15010-020-01485-6.

21. Geling, T.; Huaizheng, G.; Ying, C.; Hua, H. Recurrent positive nucleic acid detection in a recovered COVID-19 patient: A case report and literature review. *Respiratory medicine case reports* **2020**, *31*, 101152, doi:10.1016/j.rmcr.2020.101152.
22. He, F.; Luo, Q.; Lei, M.; Fan, L.; Shao, X.; Hu, K.; Qin, S.; Yu, N.; Cao, J.; Yang, L. Successful recovery of recurrence of positive SARS-CoV-2 RNA in COVID-19 patient with systemic lupus erythematosus: a case report and review. *Clinical rheumatology* **2020**, *39*, 2803-2810, doi:10.1007/s10067-020-05230-0.
23. Hu, R.; Jiang, Z.; Gao, H.; Huang, D.; Jiang, D.; Chen, F.; Li, J. Recurrent positive reverse transcriptase-polymerase chain reaction results for coronavirus disease 2019 in patients discharged from a hospital in China. *JAMA network open* **2020**, *3*, e2010475, doi:10.1001/jamanetworkopen.2020.10475.
24. Huang, J.; Zheng, L.; Li, Z.; Hao, S.; Ye, F.; Chen, J.; Yao, X.; Liao, J.; Wang, S.; Zeng, M., et al. Recurrence of SARS-CoV-2 PCR positivity in COVID-19 patients: a single center experience and potential implications. *medRxiv* **2020**, 10.1101/2020.05.06.20089573, doi:10.1101/2020.05.06.20089573.
25. Korea Centers for Disease Control & Prevention. Findings from investigation and analysis of re-positive cases (19 May 2020). Available online: https://www.cdc.go.kr/board/board.es?mid=&bid=0030&act=view&list_no=367267&nPage=1 (accessed on August 17, 2020).
26. Li, J.; Zhang, L.; Liu, B.; Song, D. Case report: viral shedding for 60 days in a woman with COVID-19. *Am J Trop Med Hyg* **2020**, *102*, 1210-1213, doi:10.4269/ajtmh.20-0275.
27. Li, X.J.; Zhang, Z.W.; Zong, Z.Y. A case of a readmitted patient who recovered from COVID-19 in Chengdu, China. *Critical Care* **2020**, *24*, doi:10.1186/s13054-020-02877-8.

28. Li, Y.; Hu, Y.; Yu, Y.; Zhang, X.; Li, B.; Wu, J.; Li, J.; Wu, Y.; Xia, X.; Tang, H., et al. Positive result of Sars-Cov-2 in faeces and sputum from discharged patients with COVID-19 in Yiwu, China. *Journal of medical virology* **2020**, 10.1002/jmv.25905, doi:10.1002/jmv.25905.
29. Liang, C.; Cao, J.; Liu, Z.; Ge, F.; Cang, J.; Miao, C.; Luo, J. Positive RT-PCR test results after consecutively negative results in patients with COVID-19. *Infectious diseases (London, England)* **2020**, 52, 517-519, doi:10.1080/23744235.2020.1755447.
30. Liu, T.; Wu, S.; Zeng, G.; Zhou, F.; Li, Y.; Guo, F.; Wang, X. Recurrent positive SARS-CoV-2: Immune certificate may not be valid. *Journal of medical virology* **2020**, 10.1002/jmv.26074, doi:10.1002/jmv.26074.
31. Loconsole, D.; Passerini, F.; Palmieri, V.O.; Centrone, F.; Sallustio, A.; Pugliese, S.; Grimaldi, L.D.; Portincasa, P.; Chironna, M. Recurrence of COVID-19 after recovery: a case report from Italy. *Infection* **2020**, 10.1007/s15010-020-01444-1, 1-3, doi:10.1007/s15010-020-01444-1.
32. Luo, A. Positive SARS-Cov-2 test in a woman with COVID-19 at 22 days after hospital discharge: A case report. *Journal of Traditional Chinese Medical Sciences* **2020**, 10.1016/j.jtcms.2020.04.001, doi:10.1016/j.jtcms.2020.04.001.
33. Mardani, M.; Nadji, S.A.; Sarhangipor, K.A.; Sharifi-Razavi, A.; Baziboroun, M. COVID-19 infection recurrence presenting with meningoencephalitis. *New microbes and new infections* **2020**, 37, 100732, doi:10.1016/j.nmni.2020.100732.
34. Qu, Y.M.; Kang, E.M.; Cong, H.Y. Positive result of Sars-Cov-2 in sputum from a cured patient with COVID-19. *Travel Med Infect Dis* **2020**, 34, 101619, doi:10.1016/j.tmaid.2020.101619.

35. Tian, M.; Long, Y.; Hong, Y.; Zhang, X.; Zha, Y. The treatment and follow-up of 'recurrence' with discharged COVID-19 patients: data from Guizhou, China. *Environmental microbiology* **2020**, *22*, 3588-3592, doi:10.1111/1462-2920.15156.
36. Wang, P. Recurrent presence of SARS-CoV-2 RNA in a 33-year-old man. *Journal of medical virology* **2020**, 10.1002/jmv.26334, doi:10.1002/jmv.26334.
37. Wang, X.; Xu, H.; Jiang, H.; Wang, L.; Lu, C.; Wei, X.; Liu, J.; Xu, S. The clinical features and outcomes of discharged coronavirus disease 2019 patients: a prospective cohort study. *QJM : monthly journal of the Association of Physicians* **2020**, 10.1093/qjmed/hcaa178, doi:10.1093/qjmed/hcaa178.
38. Xiao, A.T.; Tong, Y.X.; Zhang, S. False negative of RT-PCR and prolonged nucleic acid conversion in COVID-19: Rather than recurrence. *Journal of medical virology* **2020**, 10.1002/jmv.25855, doi:10.1002/jmv.25855.
39. Xing, Y.; Mo, P.; Xiao, Y.; Zhao, O.; Zhang, Y.; Wang, F. Post-discharge surveillance and positive virus detection in two medical staff recovered from coronavirus disease 2019 (COVID-19), China, January to February 2020. *Euro Surveill* **2020**, *25*, doi:10.2807/1560-7917.ES.2020.25.10.2000191.
40. Ye, G.; Pan, Z.; Pan, Y.; Deng, Q.; Chen, L.; Li, J.; Li, Y.; Wang, X. Clinical characteristics of severe acute respiratory syndrome coronavirus 2 reactivation. *The Journal of infection* **2020**, *80*, e14-e17, doi:10.1016/j.jinf.2020.03.001.
41. Yuan, B.; Liu, H.Q.; Yang, Z.R.; Chen, Y.X.; Liu, Z.Y.; Zhang, K.; Wang, C.; Li, W.X.; An, Y.W.; Wang, J.C., et al. Recurrence of positive SARS-CoV-2 viral RNA in recovered COVID-19 patients during medical isolation observation. *Scientific reports* **2020**, *10*, 11887, doi:10.1038/s41598-020-68782-w.

42. Yuan, J.; Kou, S.; Liang, Y.; Zeng, J.; Pan, Y.; Liu, L. PCR assays turned positive in 25 discharged COVID-19 patients. *Clin Infect Dis* **2020**, 10.1093/cid/ciaa398, doi:10.1093/cid/ciaa398.
43. Zhang, B.; Liu, S.; Dong, Y.; Zhang, L.; Zhong, Q.; Zou, Y.; Zhang, S. Positive rectal swabs in young patients recovered from coronavirus disease 2019 (COVID-19). *The Journal of infection* **2020**, *81*, e49-e52, doi:10.1016/j.jinf.2020.04.023.
44. Zheng, K.I.; Wang, X.B.; Jin, X.H.; Liu, W.Y.; Gao, F.; Chen, Y.P.; Zheng, M.H. A case series of recurrent viral RNA positivity in recovered COVID-19 Chinese patients. *Journal of general internal medicine* **2020**, *35*, 2205-2206, doi:10.1007/s11606-020-05822-1.
45. Zhou, X.; Zhou, J.; Zhao, J. Recurrent pneumonia in a patient with new coronavirus infection after discharge from hospital for insufficient antibody production: a case report. *BMC infectious diseases* **2020**, *20*, 500, doi:10.1186/s12879-020-05231-z.
46. Zhu, H.; Fu, L.; Jin, Y.; Shao, J.; Zhang, S.; Zheng, N.; Fan, L.; Yu, Z.; Ying, J.; Hu, Y., et al. Clinical features of COVID-19 convalescent patients with re-positive nucleic acid detection. *Journal of clinical laboratory analysis* **2020**, *34*, e23392, doi:10.1002/jcla.23392.
47. Zou, Y.; Wang, B.R.; Sun, L.; Xu, S.; Kong, Y.G.; Shen, L.J.; Liang, G.T.; Chen, S.M. The issue of recurrently positive patients who recovered from COVID-19 according to the current discharge criteria: investigation of patients from multiple medical institutions in Wuhan, China. *The Journal of infectious diseases* **2020**, 10.1093/infdis/jiaa301, doi:10.1093/infdis/jiaa301.

48. Nebehay, S. WHO is investigating reports of recovered COVID patients testing positive again. Available online: <https://www.reuters.com/article/us-health-coronavirus-who/who-is-investigating-reports-of-recovered-covid-patients-testing-positive-again-idUSKCN21T0F1#:~:text=According%20to%20the%20WHO's%20guidelines,24%20hours%20apart%2C%20it%20added>. (accessed on September 01, 2020).
49. European Centers for Disease Prevention and Control. Discharge criteria for confirmed COVID-19 cases - When is it safe to discharge COVID-19 cases from the hospital or end home isolation? Available online: <https://www.ecdc.europa.eu/sites/default/files/documents/COVID-19-Discharge-criteria.pdf> (accessed on September 01, 2020).
50. Arevalo-Rodriguez, I.; Buitrago-Garcia, D.; Simancas-Racines, D.; Zambrano-Achig, P.; Campo, R.; Ciapponi, A.; Sued, O.; Martinez-Garcia, L.; Rutjes, A.; Low, N., et al. False-negative results of initial RT-PCR assays for COVID-19: a systematic review. *medRxiv* **2020**, 10.1101/2020.04.16.20066787, doi:10.1101/2020.04.16.20066787.
51. Woloshin, S.; Patel, N.; Kesselheim, A.S. False negative tests for SARS-CoV-2 infection - challenges and implications. *N Engl J Med* **2020**, 383, e38, doi:10.1056/NEJMp2015897.
52. Miyamae, Y.; Hayashi, T.; Yonezawa, H.; Fujihara, J.; Matsumoto, Y.; Ito, T.; Tsubota, T.; Ishii, K. Duration of viral shedding in asymptomatic or mild cases of novel coronavirus disease 2019 (COVID-19) from a cruise ship: A single-hospital experience in Tokyo, Japan. *International journal of infectious diseases : IJID : official publication of the International Society for Infectious Diseases* **2020**, 97, 293-295, doi:10.1016/j.ijid.2020.06.020.

53. Wang, K.; Zhang, X.; Sun, J.; Ye, J.; Wang, F.; Hua, J.; Zhang, H.; Shi, T.; Li, Q.; Wu, X. Differences of severe acute respiratory syndrome coronavirus 2 shedding duration in sputum and nasopharyngeal swab specimens among adult inpatients with coronavirus disease 2019. *Chest* **2020**, 10.1016/j.chest.2020.06.015, doi:10.1016/j.chest.2020.06.015.
54. Jiang, X.; Luo, M.; Zou, Z.; Wang, X.; Chen, C.; Qiu, J. Asymptomatic SARS-CoV-2 infected case with viral detection positive in stool but negative in nasopharyngeal samples lasts for 42 days. *Journal of medical virology* **2020**, 10.1002/jmv.25941, doi:10.1002/jmv.25941.
55. Lyman, G.H.; Kuderer, N.M. The strengths and limitations of meta-analyses based on aggregate data. *BMC Med Res Methodol* **2005**, 5, 14, doi:10.1186/1471-2288-5-14.

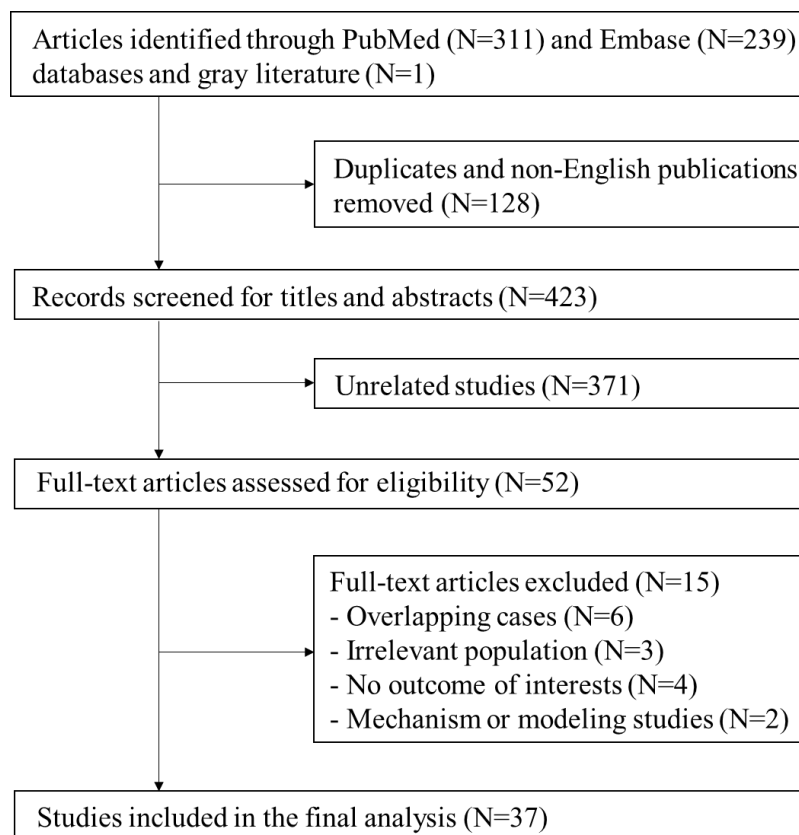


Figure 1. Flowchart of study selection

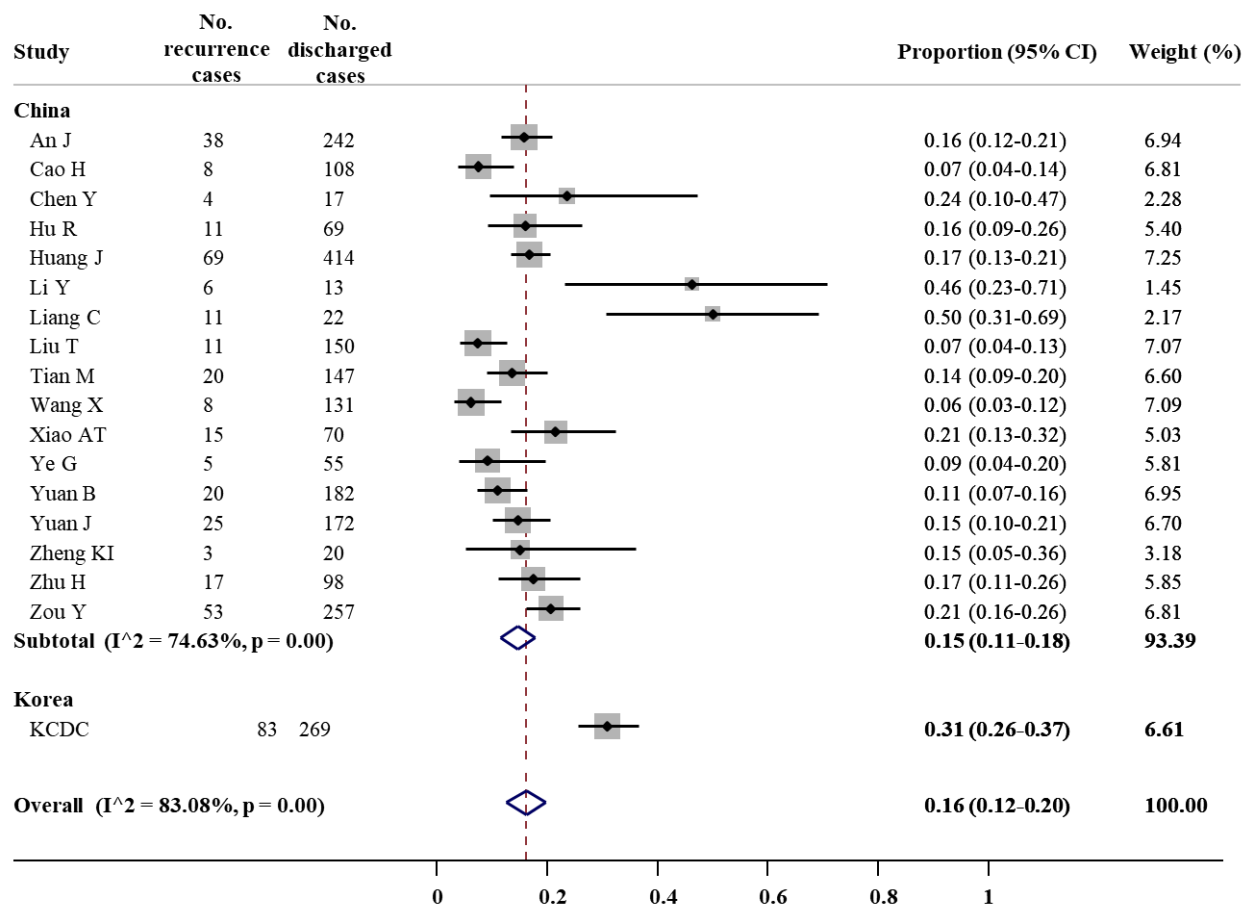


Figure 2. Forest plot for meta-analysis of COVID-19 recurrence prevalence

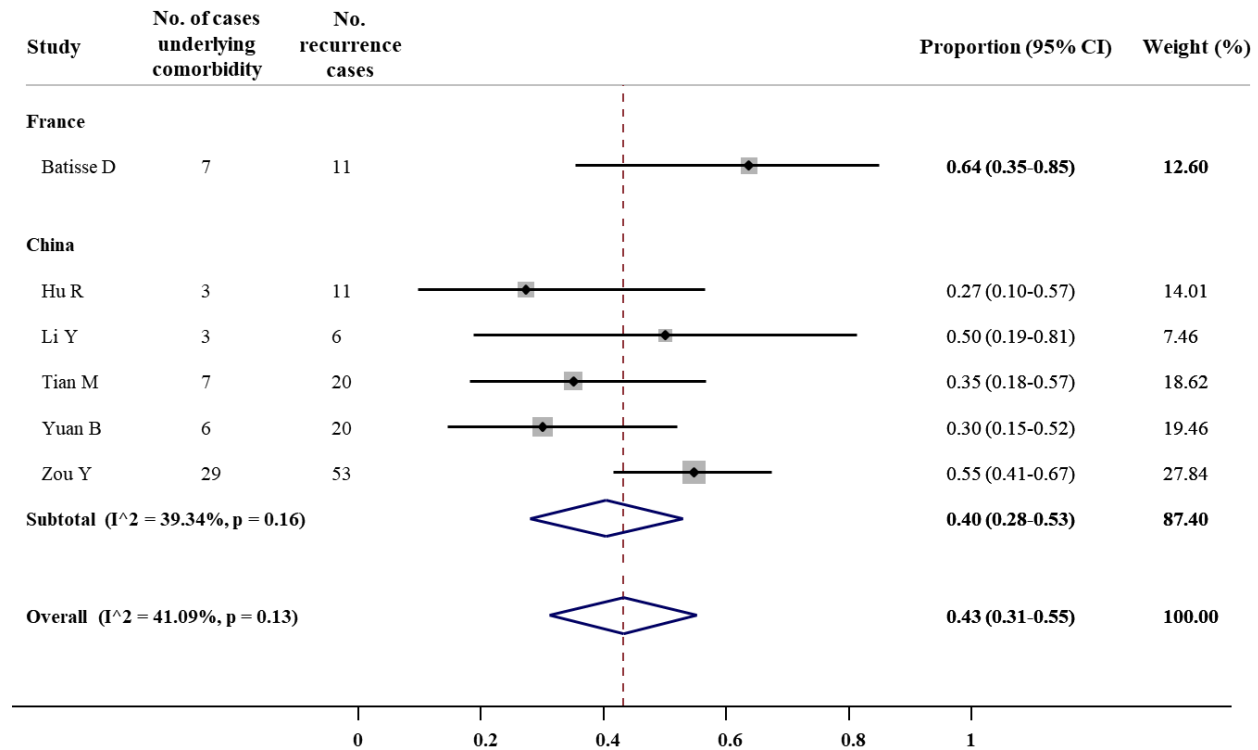


Figure 3. Forest plot for meta-analysis of comorbidity among COVID-19 recurrence cases

Table 1. Summary of studies reporting recurrence of COVID-19 cases after discharge

Study	Country	Study type	No. of recurrence cases	No. of discharged patients	Sample for testing	Age (years)	Male/female	No. of cases underlying comorbidity	Times from onset to admission (days)	Times from admission to discharge (days)	Times from discharge to positive conversion (days)
Alonso FOM	Brazil	Case report	1		Respiratory swab	26	1/0				34
An J	China	Observational	38	242	Nasal and anal swab	32.8	16/22				
Batisse D	France	Case series	11		Naso-pharyngeal swabs	55	6/5	7			
Bongiovanni M	Italy	Case series	2		Nasopharyngeal swab		0/2	2			
Cao H	China	Observational	8	108	Deep nasal cavity or throat swab	54.4	3/5	0			16.3
Chen D	China	Case report	1		Oropharyngeal swab	46	1/0		8		
Chen Y	China	Observational	4	17	Oropharyngeal, nasopharyngeal, and anal swab	32	2/2			18.25	11.25
Duggan NM	US	Case report	1			82	1/0	1	7	39	10
Fu W	China	Case series	3		Nasopharyngeal swab	48	1/2			12	9.3
Gao G	China	Case report	1			70	1/0	1	5	15	12
Geling T	China	Case report	1		Pharyngeal swab	24	1/0	0		10	8
He F	China	Case report	1		Throat swab	39	0/1		10	13	8
Hu R	China	Observational	11	69	Nasopharyngeal swab	27	7/4	3		10	14
Huang J	China	Observational	69	414	Nasopharyngeal and anal swab						
KCDC	Korea	Observational	83	269			28/41				14.3
Li J	China	Case report	1		Nasopharyngeal and oropharyngeal samples	71	0/1		14		
Li X	China	Case report	1			41	1/0		19	9	19
Li Y	China	Observational	6	13	Oral swabs, nasal swabs, sputum, blood, faeces, urine, vaginal	51.3	3/3	3			10.2

Study	Country	Study type	No. of recurrence cases	No. of discharged patients	Sample for testing	Age (years)	Male/female	No. of cases underlying comorbidity	Times from onset to admission (days)	Times from admission to discharge (days)	Times from discharge to positive conversion (days)
					secretions, and milk						
Liang C	China	Observational	11	22	Throat swab						
Liu T	China	Observational	11	150	Throat swab	49	6/5		38		
Loconsole D	Italy	Case report	1		Nasopharyngeal swab	48	1/0	0		15	30
Luo A	China	Case report	1		Throat swab	58	0/1		7	15	22
Mardani M	Iran	Case report	1		Nasopharyngeal swab	64	0/1				
Qu YM	China	Case report	1		Throat swab and sputum	49	1/0		4		
Tian M	China	Observational	20	147	Pharyngeal swabs	37.15	11/9	7	2.5	18.65	17.25
Wang P	China	Case report	1		Throat swab	33	1/0		8	21	15
Wang X	China	Observational	8	131		48.75	4/4	0			11.375
Xiao AT	China	Observational	15	70	Throat swab, deep nasal cavity swab	64	9/6				
Xing Y	China	Case series	2		Throat swab and stool tests		1/1		6	15.5	6.5
Ye G	China	Observational	5	55	Throat swab	32.4	2/3	0			10.6
Yuan B	China	Observational	20	182	Nasopharyngeal swab or anal swab	39.9	7/13	6	5.1	20.8	9.45
Yuan J	China	Observational	25	172	Cloacal swab and nasopharyngeal swab	28	8/17			15.36	5.23
Zhang B	China	Case series	7		Throat and rectal swab	22.4	6/1			15.4	9.7
Zheng KI	China	Observational	3	20	Salivary and fecal						7
Zhou X	China	Case report	1		Oropharyngeal swab	40	1/0		6	16	7
Zhu H	China	Observational	17	98	Sputum and pharyngeal swab	54	5/12				4
Zou Y	China	Observational	53	257	Throat swabs	62.19	23/30	29	25.32		4.6

Table 2. Epidemiological characteristics of COVID-19 recurrence cases

Characteristic	No. studies	No. of recurrence cases	Result
Age (years)	31	276	45.4
Male (no., %)	34	363	158 (43.5%)
Times from onset to admission (days)	15	116	17.3
Times from admission to discharge (days)	17	101	16.7
Times from discharge to positive conversion (days)	26	285	10.5