

Assessment of COVID-19 Pandemic in Nepal: A Lockdown Scenario

Analysis

Kusum Sharma¹, Amrit Banstola^{2,3*}, Rishi Ram Parajuli⁴

¹Science Hub, Kathmandu, Nepal

²Faculty of Health and Applied Sciences, University of the West of England, Bristol, UK

³Department of Research, Public Health Perspective Nepal, Pokhara, Nepal

⁴Department of Civil Engineering, University of Bristol, Bristol, UK

* Correspondence:

Amrit Banstola

amrit.banstola@uwe.ac.uk

Abstract

The Government of Nepal issued a nationwide lockdown from 24 March to 21 July 2020. Here we present the overall scenario of COVID-19, government efforts, impact on socio-economic, education, and health care, and prevailing challenges when the lockdown was lifted. We collated and analysed data provided by the Nepalese Ministry of Health and Population. There were only two confirmed cases from 610 Reverse Transcription Polymerase Chain Reaction (RT-PCR) tests and no fatalities when the government introduced nationwide lockdown. Nepal had performed 7791 RT-PCR tests for COVID-19, the highest number of tests during the lockdown. It has recorded its highest daily rise in coronavirus infections with a total of 740 new cases from the total of 4483 RT-PCR tests performed on a single day. Nepal had reported a total of 17994 positive cases and 40 deaths at the end of lockdown. The spatial distribution clearly shows that

the cases were rapidly spreading from the southern part of the country where most points of entry and exit from India are located. The government needs to allocate more resources, increase its capacity to test and trace, establish dedicated isolation and quarantine facilities, and impose local restrictions to manage potential COVID-19 outbreaks after easing lockdown.

Keywords: COVID-19, coronavirus, public health, Nepal, spatial distribution analysis, lockdown, impacts, challenges.

Introduction

Coronavirus disease (COVID-19) outbreak originating from Wuhan, China in late 2019 has spread worldwide claiming more than 700 thousand lives all over the world [1]. On 11 March 2020, the World Health Organization (WHO) declared it as a pandemic [1]. Since the outbreak of the disease WHO through its guidelines has prioritized the actions for responding to the virus; urged the government to maintain health facilities, raise public awareness, and stock up on medical supplies [2].

The strict lockdown was enforced to limit the spread of COVID-19 in countries such as Italy, Spain, France, the UK after the steady rise in cases whereas Nepal introduced lockdown during the early phase of the pandemic [3]. Lockdown is the blanket approach that buys time to prepare the healthcare system (active case finding through testing and tracing, case management e.g. quarantine, isolation and treatment, and availability of protective equipment) to confine the virus and its spread. The Government of Nepal issued a nationwide lockdown from 24 March to 21 July 2020, prohibiting domestic and international travels, border closures, and closure of non-essential services in the first stage, which was later eased on 11 June 2020. When the

Government of Nepal announced a nationwide lockdown, it had only two confirmed cases from 610 Reverse Transcription Polymerase Chain Reaction (RT-PCR) tests and no fatalities [4]. The indexed case was found on 23 January 2020 in Kathmandu on a person who had travelled from Wuhan, China [5]. The second case was confirmed two months later on 23 March who had travelled to Nepal from France via Qatar [6].

In this article, we present the data of COVID-19 during a lockdown period (positive cases, RT-PCR test performed, recoveries, total active and deaths cases including case fatality ratio), the spatial distribution of COVID-19 cases, measures taken by the Government of Nepal in managing the pandemic, socioeconomic and public health impacts including challenges. Finally, we offer helpful suggestions to address the challenges brought by COVID-19.

Methods

Study Design

This was a descriptive study to assess the multiple scenarios of COVID-19 pandemic in Nepal during the lockdown period. Daily positive cases reported in local administrative units (Municipality or Rural Municipality) were analysed along with total daily data for the country. Government efforts, public health, educational, socio-economic impacts, and prevailing challenges were discussed to summarize the situation of Nepal during the initial lockdown period.

Study Area

Nepal is a lower-middle-income country in South Asia between India (in the south, east, and west) and China (in the north). It has a population of around 30 million. The new constitution

promulgated on 20 September 2015 made Nepal a federal democratic republic and is divided into seven provinces, 77 districts, and 753 local units (municipalities and rural municipalities). It is divided into three physiographic regions: Mountain region (Great Himalayan Range in the northern part), Hilly region, and Terai region (low land region at the Indian border in the southern part).

Data Collection

We analysed results from the COVID-19 situation reports prepared by the Nepalese Ministry of Health and Population (MOHP). For this study, we downloaded the COVID-19 situation reports from the openly available online resources on the web portal (covid19.mohp.gov.np). We collated data for the lockdown period (from 24 March to 21 July 2020). The MOHP has defined a confirmed COVID-19 case as any person with laboratory confirmation of COVID-19 infection, irrespective of clinical signs and symptoms, i.e. person who had RT-PCR tested positive for Severe Acute Respiratory Syndrome Coronavirus-2 (SARS-CoV-2).

Statistical Analysis

Data were analysed descriptively in a Microsoft Excel 2019 Version 16.0 (Microsoft Corporation, Redmond, Washington, USA). The number of COVID-19 cases, daily RT-PCR tests performed and the number of recoveries were used to assess the COVID-19 pandemic situation. The number of deaths and Case Fatality Rate (CFR) was presented by different age groups. CFR was calculated as the proportion of confirmed deaths among identified confirmed cases. Everyday data of COVID-19 positive cases were presented in local level units. The maps used to show the spatial distribution of COVID-19 cases in Nepal were created using the QGIS Version 3.14 (www.qgis.org).

Results

Figure 1 shows the daily and weekly average of tests and positive cases during the lockdown period. On 29 June, Nepal had performed 7791 tests for COVID-19, the highest number of tests during the lockdown. It has recorded its highest daily rise in coronavirus infections with a total of 740 new cases from the total of 4483 tests performed on a single day on 3 July. The number of daily cases was decreasing after its peak on 3 July but subsequently, the number of tests was also decreasing.

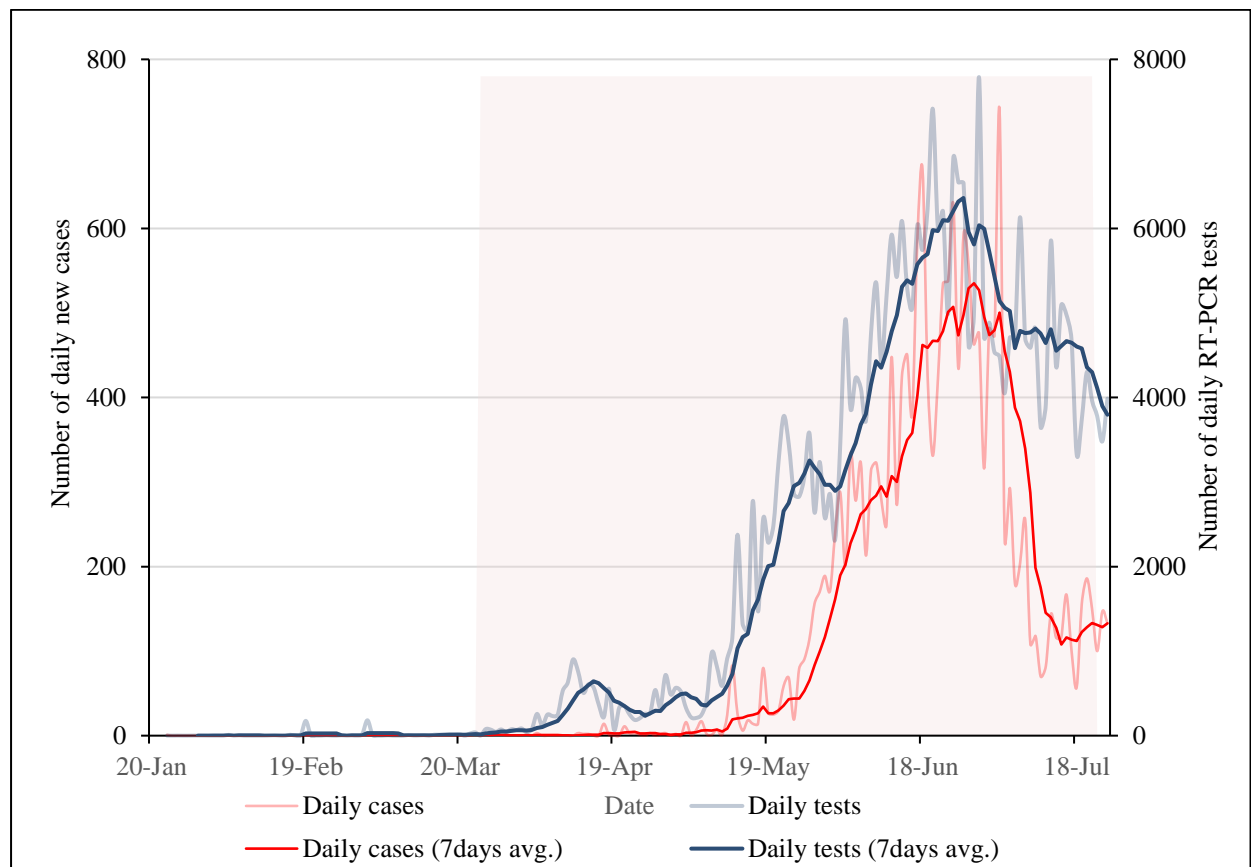


Figure 1. Daily new cases and RT-PCR tests along with 7 days average of cases and tests

Figure 2 shows COVID-19 cumulative cases, recoveries, and active cases during the lockdown. As per the figure, the number of people recovered from the coronavirus in Nepal increased during the lockdown. However, the number of active cases decreased. On 1 July there were 10390 active cases in the country which was continuously declining till the end of the lockdown period. Lack of proper management of quarantine and isolation centres may have caused a significant increase in cases two-months after lockdown started as most of the cases were imported from India, and were later transmitted to the community. Data show that the bending of the curve had started before the government decided to lift the nationwide lockdown however the risk of further transmission in the community was prevailing.

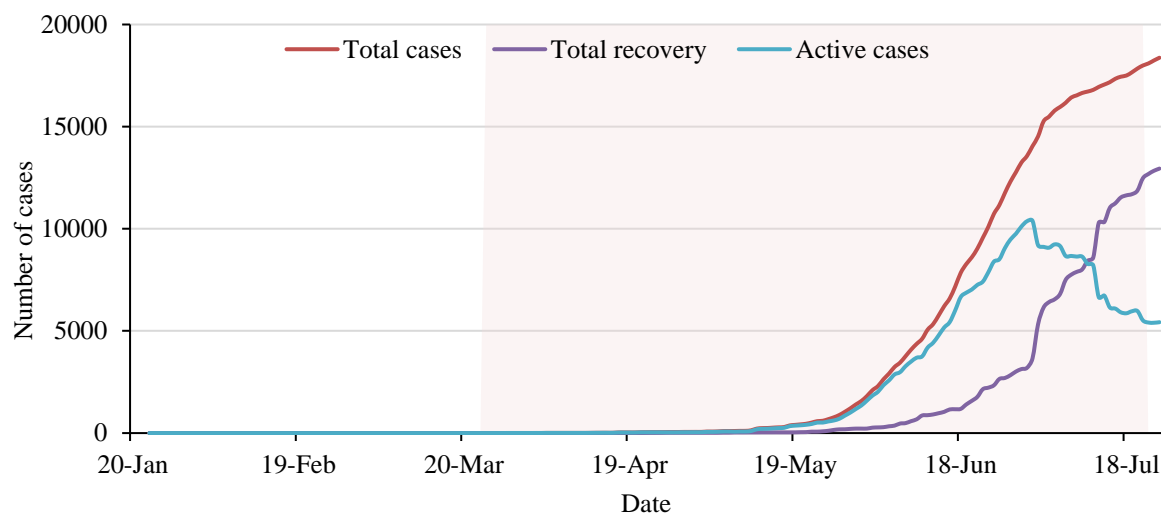


Figure 2. Total cases, recovery, and active cases in Nepal

Death and Case Fatality Ratio

Nepal had reported a total of 17994 positive cases and 40 deaths on the last date of nationwide lockdown. Figure 3 shows the distribution of cases and a death toll in age groups where the younger population is more infected. The main reason behind such distribution is most of the cases were imported by young immigrants who went abroad for work. The number of deaths and

the corresponding overall death rate is very small (0.22%) however the relative death rate curve tells a different story (Figure 4).

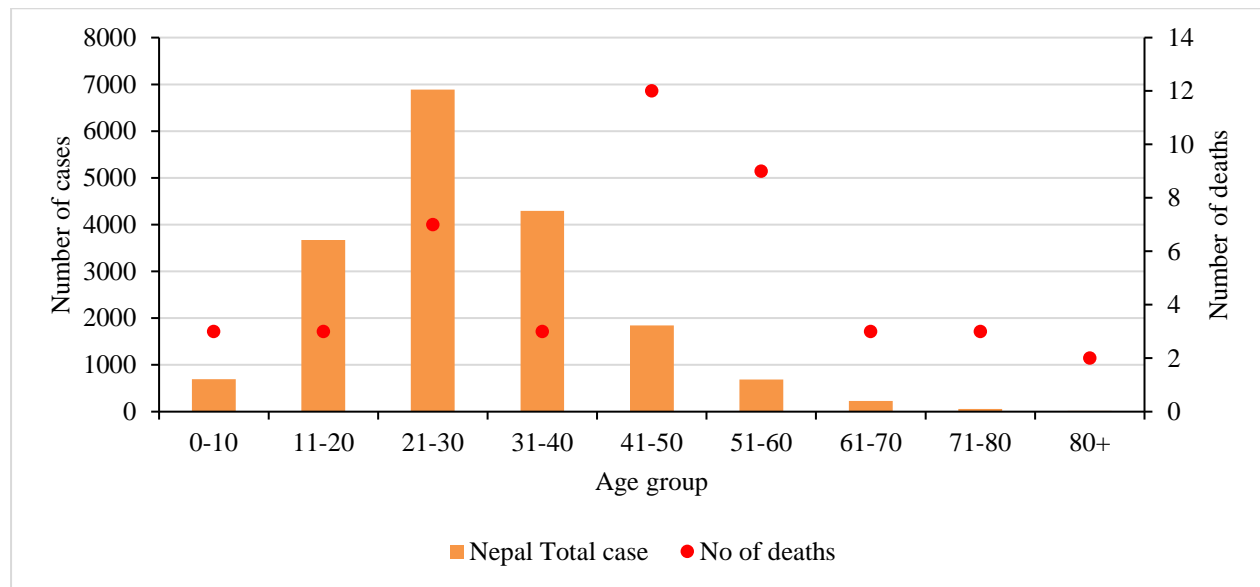


Figure 3. Number of total cases and deaths by age group

CFR in Nepal shows a similar trend to the *COVIRA* risk model [7] which is the risk model based on early-stage pandemic data. Figure 4 shows the comparison of the *COVIRA* risk model and Nepal data (relative percentage of CFR). The correlation between CFR in age groups and *COVIRA* model is 0.986 which shows very good agreement of data. The trend of CFR by age group shows exponential relation with r-square value of 0.714. Hence, one of the alarming points for Nepal is, if the infection spread in the community and the older people get infected, the death toll will rapidly increase.

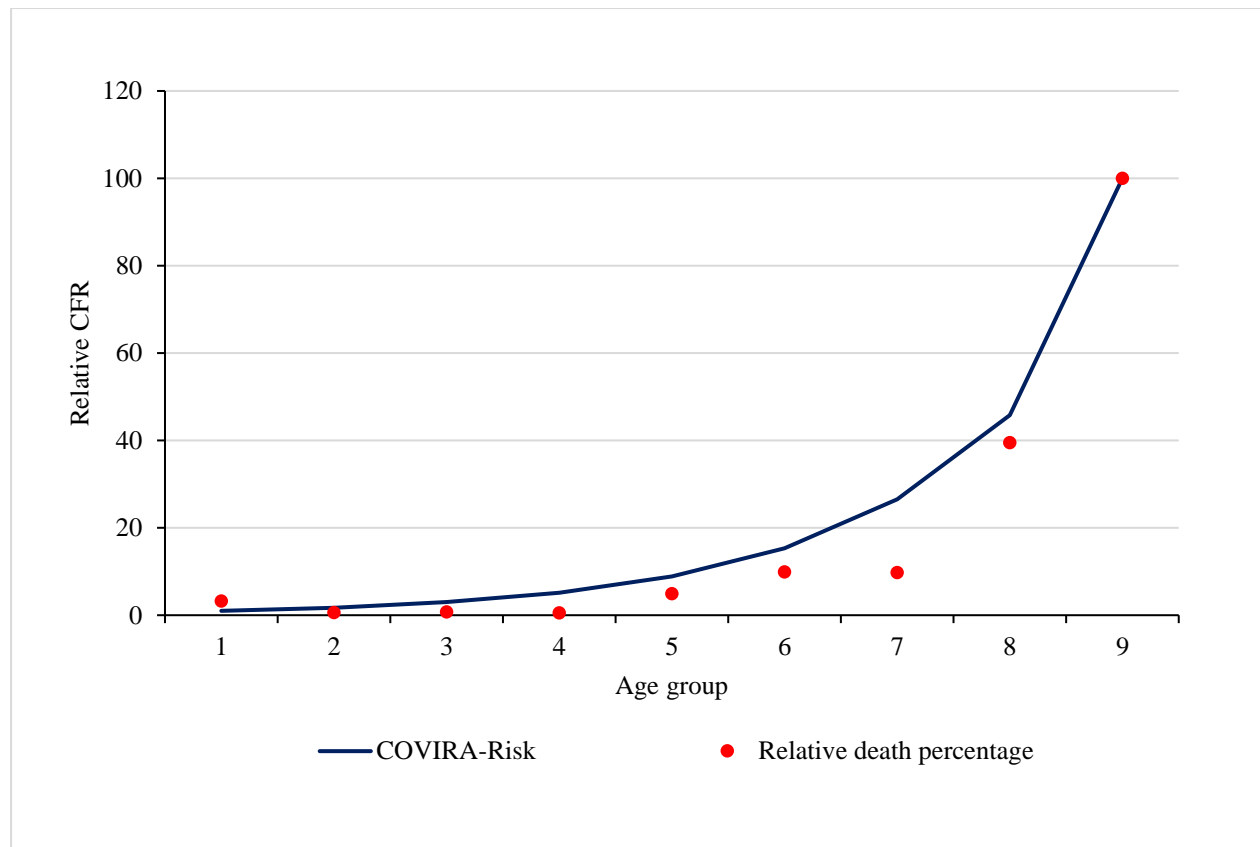


Figure 4. Relative case fatality ratio and comparison with the *COVIRA* risk model

Spatial Distribution

Figure 5 shows the spatial distribution of total cases on the first and 15th days of the months over a lockdown period. The first few cases were spotted in the capital (Kathmandu), however later, imported cases from India had spread across Nepal. These maps clearly show that the cases were rapidly spreading from the southern part of the country where most points of entry and exit from India are located.

It is made available under a [CC-BY-NC 4.0 International license](#).

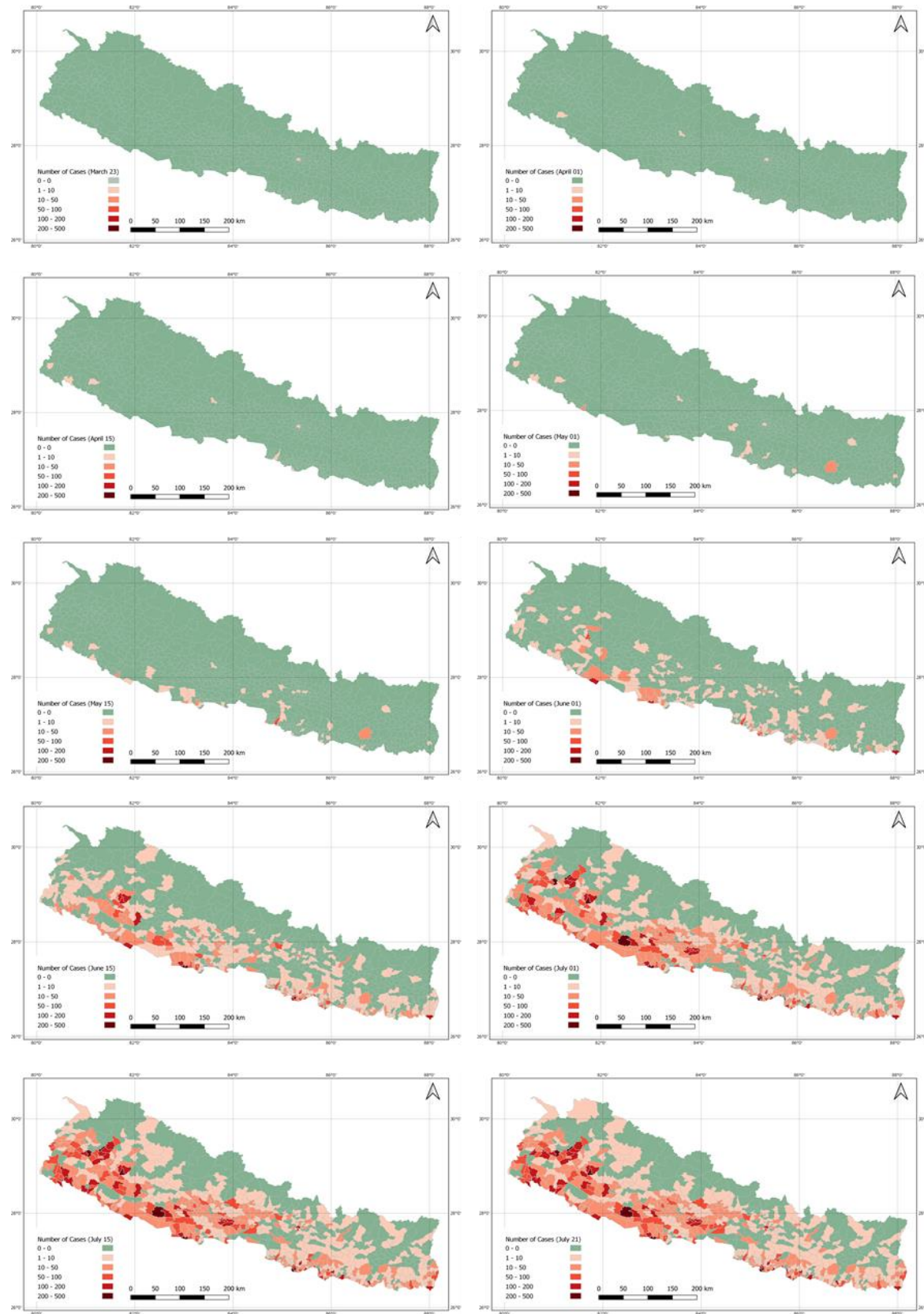


Figure 5. Total positive COVID-19 cases across the country by date

The government lifted the lockdown when the curve of daily cases was flattening, however, the situation in the country was not totally under control. There was a high possibility of spreading the virus if an infected person was exposed to others until around two weeks of infection.

Mapping the report of last active cases across the country was important to look at the prevailing risk zones. Figure 6 shows the number of days since the last case was reported on the day when the lockdown was lifted.

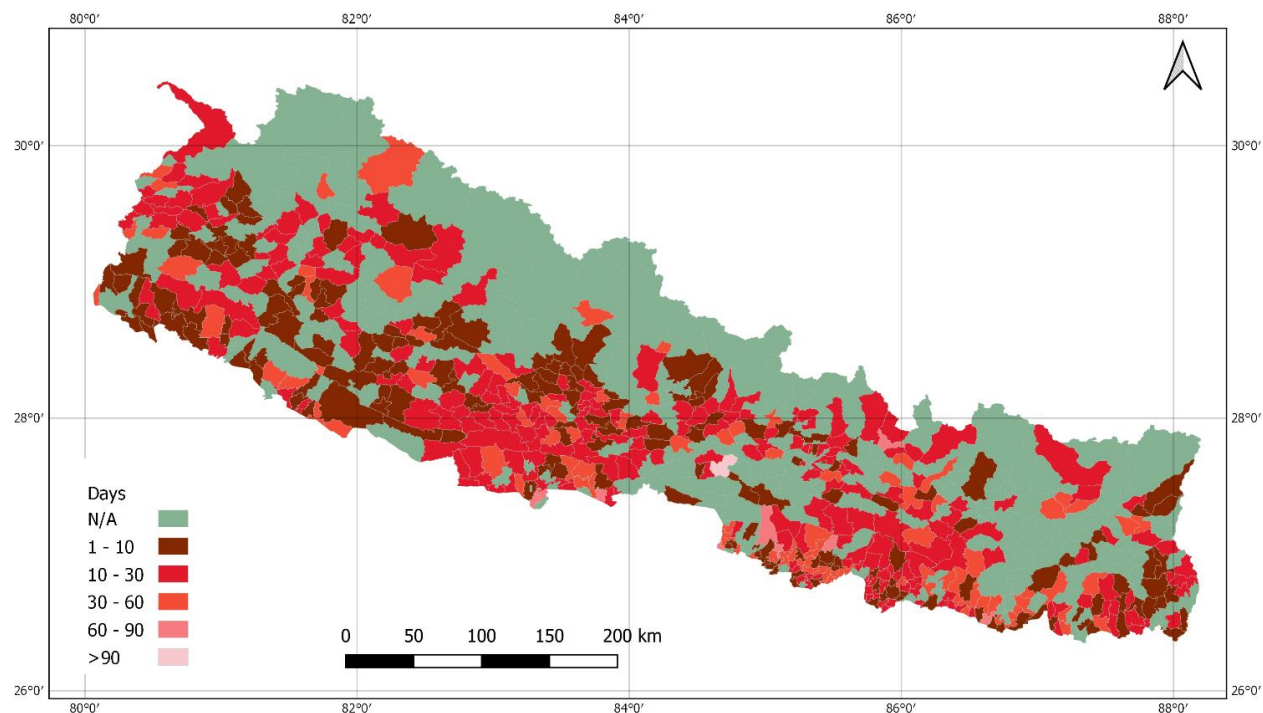


Figure 6. Number of days since the last case reported on the day when the lockdown was lifted

Government Efforts on Managing the Pandemic during the Lockdown

The Government of Nepal has initiated various preventive measures and strategies during the lockdown as shown in the list below [8].

- Guidelines issued for the management and handling of quarantine.

- Dissemination of information, education, and communication materials on social distancing, handwashing, proper use of masks and hand sanitizer, mass awareness via television, radio, social media, and pamphlets.
- Launch of mobile application (*Hamro Swasthya*), the web portal (covid19.mohp.gov.np).
- Two toll-free call centres to provide counselling on COVID-19 prevention and treatment.
- Daily briefings by the MOHP to update about the current situation.
- Travel restriction, testing, and tracing.
- Health sector emergency response plan for COVID-19 pandemic which includes strategies to deal with quarantine management, case investigation, contact tracing, community-level screening and testing, strengthening laboratory capacity, etc.
- Protocol on the safe management of dead bodies.
- Guidelines issued for the management of isolation of COVID-19 cases.
- National testing guidelines for COVID-19.
- Public health standards to be followed by people and institutions during COVID-19 pandemic and lockdown.
- Allowed private laboratories to perform RT-PCR test.
- Availability of RT-PCR tests in all seven provinces of Nepal.
- Health standards for isolation of COVID-19 cases.
- Training of trainers on case investigation and contact tracing.
- MOHP endorsed the standards for home quarantine.
- Number of hospitals for the management of COVID-19 (as of 21 July 2020):
 - Hospitals with COVID-19 clinics: 125

- Level 1 COVID Hospitals (for management of positive cases with mild symptoms): 16
- Level 2 COVID Hospitals (for management of positive cases with moderate or severe symptoms): 16
- Level 3 COVID Hospitals (for management of COVID positive cases who needs multi-speciality services): 4
- Total laboratories established capable of doing RT-PCR: 28
- Total intensive care unit beds allocated for COVID-19 cases: 942 of total 2,600 ICU beds available in the country.
- Total ventilators allocated for COVID-19 cases: 496 of total 900 ventilators available in the country.

Discussion

Nepal had performed 7791 tests for COVID-19, the highest number of tests during the lockdown. It has recorded its highest daily rise in coronavirus infections with a total of 740 new cases from the total of 4483 tests performed on a single day. The number of people recovered from the coronavirus in Nepal increased during the lockdown. Nepal had reported a total of 17994 positive cases and 40 deaths on the last date of nationwide lockdown. The spatial distribution clearly shows that the cases were rapidly spreading from the southern part of the country where most points of entry and exit from India are located.

Socioeconomic Impact

Nationwide lockdown restricted the socioeconomic activities all over the country, where very few essential services were run throughout the period. Multidimensional impacts of lockdown have been found in society, many people lost their job and businesses along with other health care were impacted. It disrupted the supply chain, shut many informal and small enterprises, and pushed more vulnerable people into poverty [9]. The tourism industry hit hard in Nepal where it fell below 10%, resulting in more than 13000 job losses of trekkers and guides [10]. There are 1.6 to 2 million jobs at risk due to the COVID-19 crisis where 80.8% of total jobs in the country are informal [11]. A household survey on the impact of COVID-19 on food security and vulnerability conducted by the World Food Programme, Nepal and the Ministry of Agriculture and Livestock Development showed that of the 4416 households from across the country, only 42% had one month worth of food stocks [12].

Impact on Education

The COVID-19 pandemic has worsened already existing inequalities within the education system. In Nepal, all educational institutions have been closed due to the COVID-19 pandemic. Interrupted learning is one of the immediate impacts of school closures. According to UNESCO, more than 8 million students in Nepal (4.5 million females and 4.3 million males) of which primary and secondary school children represent 45% and 39%, respectively were affected by school closures due to lockdown [13]. During the lockdown, children from poor, marginalized, and disadvantaged families who already have limited educational opportunities outside school are most affected. UNESCO anticipates a rise in dropout rates when schools reopen because poor families engage their children to work for income-related activities [14]. Child marriage has increased during the lockdown and it is estimated to further surge during pandemic [15, 16].

Although the Government of Nepal has strategies for online learning during school closure, children from poorer families and those living in rural areas are unable to access such alternative education opportunities [17].

Healthcare Impact

The lockdown has affected the health of individuals and disrupted healthcare services particularly emergency and regular health services. During the lockdown, at the individual level, one of the most notable impacts was on psychological health. Quarantine, social isolation, and travel restrictions had negatively impacted the mental health of people who have COVID-19 and their families. A few preliminary studies have shown psychological issues such as stress, anxiety, depression, insomnia among the general population [18-20] as well as frontline health workers [21, 22]. A study by Gupta, Mehra conducted among 150 health workers showed that 38 % of the healthcare workers on COVID-19 duty in Nepal suffered anxiety and/or depression [22]. Another online survey conducted among 475 health workers showed that 41.9% of health workers had symptoms of anxiety, 37.5% had depression symptoms and 33.9% had symptoms of insomnia [21]. Incidents of stigmatization and social discrimination of healthcare workers, people who have COVID-19, and their families were also reported in Nepal during the lockdown [23, 24].

Nepal Police record shows that during the lockdown, the number of suicide cases has increased. Within 74 days of lockdown, a total of 1227 people committed suicide, which is more than 15 suicidal death per month compared to the previous year [25]. Although reasons for what had caused suicide and suicidal thoughts are still unknown in Nepal, they could be linked to the uncertainty about the pandemic, self-isolation, financial burden, loss of family members, stigma

as evident in previous disasters and epidemics [26-28]. In addition to suicide, domestic violence, sexual abuse, and rape were being perpetrated during the lockdown in Nepal [29].

The government's priority to combat COVID-19 and the lockdown adopted to contain its transmission put vulnerable populations such as pregnant women, children, the elderly, and people with non-COVID diseases at risk by impacting their ability to access essential healthcare services. For example, pregnant women faced barriers to accessing regular antenatal care and delivery services [30] and patients with non-communicable diseases faced barriers to access long-term care and medicines [31] during the lockdown periods. Millions of children aged between six months and five years missed measles and rubella mass immunization, vitamin A, and deworming tablets because the Government of Nepal postponed these national-level campaigns [32]. Limited ability to access such essential and routine health care services poses an urgent threat to the nation's health and could reverse some of the achievements in reducing maternal, newborn, and child deaths.

Challenges

Future COVID-19 cases in Nepal will depend on the situation in India where the cases are increasing rapidly. Nepal shares an open border with India and there may be an increase in the number of Nepali workers returning from India who remain stranded in different parts of India due to the lockdowns in both countries. It is estimated that 600000 migrant workers will return to Nepal within a few weeks of lifting the nationwide lockdown restrictions [33]. This flow of migrant workers could increase the number of cases as the government has not been able to utilize the lockdown time efficiently to prepare and ready for responding to COVID-19. The challenge will be to test and trace these people for COVID-19. Before the lockdown, thousands

of migrant Nepali workers returned to Nepal without proper screening from the Indian states of Maharashtra, Delhi, and Gujarat, which have the most COVID-19 cases in India [34].

Furthermore, active cases reported in recent days across the country are major challenges to control the community transmission of the virus. Figure 6 shows that most of the areas have recent active cases (the last case reported up to 15 days). Lifting the lockdown instead of easing some restrictions would negatively impact public awareness. Citizen and institutional/governance awareness is always a key factor in disaster risk reduction and managing pandemic, that is often lacking in low-income countries [35].

The testing capacity of the country has not increased due to a shortage of RT-PCR test kits, personal protective equipment, trained workers, and medical supplies. With limited testing capacity, it is challenging to monitor the transmission of the virus in Nepal because the suspected cases continue to transmit the virus while awaiting the COVID-19 test. Some COVID-19 cases remain asymptomatic, so it is difficult to predict the severity of the outbreak. There are only a few health facilities capable of treating and managing the cases with some degree of preparedness and readiness to provide the services [36, 37]. If the number of cases becomes higher than the capacity of these health facilities to cope with the increased demand it would be more challenging to contain the virus.

Another challenge is to control other communicable and non-communicable diseases amidst the COVID-19 pandemic. Non-communicable diseases such as cancer, hypertension, cardiovascular disease, diabetes, chronic respiratory diseases, mental illness are already a major public health problem in Nepal and accounted for 71% of the total annual deaths in 2019 [38]. These diseases

will exacerbate and the impact could be much higher than the COVID-19 if they are left behind in the fight against COVID-19.

Strengths and Limitations

The study strength included the use of openly available official figures from the MOHP web portal to provide an overall scenario of COVID-19 pandemic during the lockdown. The findings would be applicable to compare the post-lockdown situation of COVID-19 pandemic in Nepal and to guide more effective measures to contain the spread of the coronavirus. One of the limitations with openly available data was that individual-level patient details were not accessible to perform detail epidemiological analysis. The number of people who had COVID-19 represents only a reflection of those who were tested rather than the actual figure. In the daily situation reports shared by the MOHP, there was inconsistency in the details provided. Some daily situation reports of the COVID-19 had information on gender while others did not contain such key information.

Conclusion and Recommendation

This study provides an overall scenario of the COVID-19 pandemic during the lockdown in Nepal. The capacity of the health system to quickly test to find out if anyone who develops symptoms of COVID-19 and tracing and testing of close contacts of those who test positive for COVID-19 must be increased. The government needs to allocate resources, such as necessary public health workforce, availability of personal protective equipment, expansion of intensive care unit beds, and purchase of extra ventilators. Other actions to stop spread include managed isolation in a designated setting for people who cannot afford to self-isolate or in a dedicated quarantine facility who can't self-quarantine. Another approach the government could take to

manage local COVID-19 outbreaks is to impose local restrictions. This could be in the form of a local lockdown based on risk assessment rather than a nationwide lockdown. As the restrictions of COVID-19 lockdown are eased, there would be more flow of people which leads to more exposure so preventive measures should be established in shopping centres, cities, shops, and workplaces. The government should continue disseminating information on following social distancing, hand hygiene, and face covering.

Acknowledgements

We acknowledge the Ministry of Health and Population, Nepal for making COVID-19 data publicly available.

Financial support

This research received no specific grant from any funding agency, commercial or not-for-profit sectors.

Conflict of Interest

None.

Author Contributions

KS, AB, and RRP conceptualized the study. KS and RRP produced most of the figures, analysed, and interpreted the data. KS, AB, and RRP prepared the first draft of the paper. AB and RRP revised the paper critically for important intellectual content. All authors have approved the final version.

Supplementary Material

None.

Data Availability Statement

The authors confirm that the data supporting the findings of this study are available within the article.

References

1. World Health Organization (WHO). Situation reports. Available at <https://www.who.int/emergencies/diseases/novel-coronavirus-2019/situation-reports> (Accessed 25 July 2020).
2. World Health Organization (WHO). Responding to community spread of COVID-19: interim guidance, 7 March 2020. Available at <https://apps.who.int/iris/handle/10665/331421> (Accessed 25 July 2020).
3. Piryani RM, Piryani S, Shah JN. Nepal's response to contain COVID-19 infection. *Journal of Nepal Health Research Council* 2020; **18**: 128-134.
4. Ministry of Health and Population. Health sector response to COVID-19 situation report #43. Available at <https://drive.google.com/file/d/1z6XBao8nCS9OTmhLY-nU6sg15WUV4L-R/view?usp=sharing> (Accessed 25 July 2020).
5. Ministry of Health and Population. Health sector response to novel coronavirus (2019-nCoV) situation report #1. Available at <https://drive.google.com/file/d/1mp0zAbQvNgy9kr1hgjqPZlQhtqMJFoil/view?usp=sharing> (Accessed 25 July 2020).

6. Pun SB, *et al.* Understanding COVID-19 in Nepal. *Journal of Nepal Health Research Council* 2020; **18**: 126-127.
7. Parajuli RR, *et al.* Multidisciplinary approach to COVID-19 risk communication: a framework and tool for individual and regional risk assessment. *Scientific Reports* 2020; **10**: 21650
8. Ministry of Health and Population. Coronavirus disease (COVID-19) outbreak updates & resource materials. Available at <https://heoc.mohp.gov.np/update-on-novel-corona-virus-covid-19/> (Accessed 25 July 2020).
9. United Nations Development Programme (UNDP). Rapid assessment of socio economic impact of COVID-19 in Nepal. Available at <https://www.np.undp.org/content/nepal/en/home/library/rapid-assessment-of-socio-economic-impact.html> (Accessed 25 July 2020).
10. World Trade Organization (WTO). COVID-19 and its effect on Nepal. Available at https://www.wto.org/english/tratop_e/covid19_e/sawdf_nepal_e.pdf (Accessed 26 July 2020).
11. International Labour Organization (ILO). COVID-19 labour market impact in Nepal. Available at https://www.ilo.org/wcmsp5/groups/public/---asia/---ro-bangkok/---ilo-kathmandu/documents/briefingnote/wcms_745439.pdf (Accessed 26 July 2020).
12. World Food Programme (WFP). The impact of COVID-19 on households in Nepal: mVAM household livelihoods, food security and vulnerability survey. Available at https://docs.wfp.org/api/documents/WFP-0000116728/download/?_ga=2.17578425.1015156072.1598117657-459637742.1598117657 (Accessed 26 July 2020).
13. United Nations Educational, Scientific and Cultural Organization (UNESCO). Global Monitoring of school closures due to COVID-19. Available at <https://en.unesco.org/covid19/educationresponse> (Accessed 15 December 2020).

14. United Nations Educational, Scientific and Cultural Organization (UNESCO). COVID-19 education response: preparing the reopening of schools: resource paper. Available at <https://unesdoc.unesco.org/ark:/48223/pf0000373401?web=1> (Accessed 15 December 2020).
15. Sharma N. Child marriages up during Nepal lockdown. *Nepali Times* 2020; 21 May.
16. Logan M, Maharjan SS. Nepal child marriages spike during pandemic. *Nepali Times* 2020; 20 December.
17. United Nations Children's Fund (UNICEF). COVID-19: At least a third of the world's and two-thirds of Nepal's schoolchildren unable to access remote learning during school closures, new UNICEF report says. Available at <https://www.unicef.org/nepal/press-releases/covid-19-least-third-worlds-and-two-thirds-nepals-schoolchildren-unable-access> (Accessed 21 December 2020).
18. Sigdel A, *et al.* Depression, anxiety and depression-anxiety comorbidity amid COVID-19 pandemic: an online survey conducted during lockdown in Nepal. *medRxiv* [Preprint] 2020. doi: 10.1101/2020.04.30.20086926.
19. Samadarshi SCA, Sharma S, Bhatta J. An online survey of factors associated with self-perceived stress during the initial stage of the COVID-19 outbreak in Nepal. *Ethiopian Journal of Health Development* 2020; **34**: 84-89.
20. Gupta AK, *et al.* Psychological impact of 'lockdown' due to COVID-19 pandemic in Nepal: an online survey. *Asian Journal of Psychiatry* 2020; **54**: 102243.
21. Khanal P, *et al.* Mental health impacts among health workers during COVID-19 in a low resource setting: a cross-sectional survey from Nepal. *Globalization and Health* 2020; **16**: 89.
22. Gupta AK, *et al.* Prevalence of anxiety and depression among the healthcare workers in Nepal during the COVID-19 pandemic. *Asian Journal of Psychiatry* 2020; **54**: 102260.

23. Singh R, Subedi M. COVID-19 and stigma: social discrimination towards frontline healthcare providers and COVID-19 recovered patients in Nepal. *Asian Journal of Psychiatry* 2020; **53**: 102222.
24. Acharya RP, Shah A. Ethical dimensions of stigma and discrimination in Nepal during COVID-19 pandemic. *Ethics, Medicine and Public Health* 2020; **14**: 100536.
25. Poudel A. Over 1,200 people killed themselves during 74 days of lockdown. *Kathmandu Post* 2020; 14 June.
26. Safarpour H, *et al.* Suicide death rate after disasters: a meta-analysis study. *Archives of Suicide Research* 2020; 1-14.
27. Cousins S. Nepal's silent epidemic of suicide. *The Lancet* 2016; **387**: 16-17.
28. Chan SMS, *et al.* Elderly suicide and the 2003 SARS epidemic in Hong Kong. *International Journal of Geriatric Psychiatry* 2006; **21**: 113-118.
29. Sharma N. In Nepal lockdown, a domestic violence spike. *Nepali Times* 2020; 5 May.
30. United Nations Population Fund (UNFPA). In Nepal, COVID-19 turning pregnancy excitement into fear. Available at <https://www.unfpa.org/news/nepal-covid-19-turning-pregnancy-excitement-fear> (Accessed 26 July 2020).
31. Singh BP. Patients under regular medication face shortage of medicines due to prolonged lockdown. *Kathmandu Post* 2020; 6 May.
32. United Nations Children's Fund (UNICEF). Disruption of child vaccination in South Asia poses an urgent threat to children's health – UNICEF. Available at <https://www.unicef.org/rosa/press-releases/disruption-child-vaccination-south-asia-poses-urgent-threat-childrens-health-unicef> (Accessed 26 July 2020).

33. ACAPS. Nepal: COVID-19 & the return of migrants. Available at https://reliefweb.int/sites/reliefweb.int/files/resources/20200612_acaps_start_briefing_note_nepal_migrant_returnees_covid-19.pdf (Accessed 26 July 2020).
34. Pokhrel M, Awale S. Returnees may be taking coronavirus to rural Nepal. *Nepali Times* 2020; 31 March.
35. Parajuli RR. Citizen disaster science education for effective disaster risk reduction in developing countries. *Geoenvironmental Disasters* 2020; **7**: 1-4.
36. Nepal Health Research Council (NHRC). Assessment of health-related country preparedness and readiness of Nepal for responding to COVID-19 pandemic. Available at <http://nhrc.gov.np/assessment-of-health-related-country-preparedness-and-readiness-of-nepal-for-responding-to-covid-19-pandemic-2/> (Accessed 26 July 2020).
37. Bhattarai S, *et al.* Assessment of service availability and infection prevention measures in hospitals of Nepal during the transition phase of COVID-19 case surge. *medRxiv* [Preprint] 2020. doi: 10.1101/2020.05.13.20097675
38. Global Burden of Disease Collaborative Network. Global burden of disease study 2019 (GBD 2019) results. Available at <http://ghdx.healthdata.org/gbd-results-tool> (Accessed 21 December 2020).