

# Estimating the number of COVID-19 cases being introduced into British Higher Education Institutions during Autumn 2020

Francisco J. Pérez-Reche<sup>1</sup> and Norval J.C. Strachan<sup>1,2</sup>

<sup>1</sup>*School of Natural and Computing Sciences,* <sup>2</sup>*School of Biological Sciences, University of Aberdeen, Old Aberdeen, AB24 3UE, Aberdeen, Scotland, UK*

Correspondence: [fperez-reche@abdn.ac.uk](mailto:fperez-reche@abdn.ac.uk)

## Abstract

It is estimated that 81% of the 163 UK Higher Educational Institutes (HEIs) have more than a 50% chance of having at least one COVID-19 case arriving on campus when considering all staff and students. Across all HEIs it is estimated that there will be a total of approximately 700 COVID-19 cases (95% CI: 640 - 750) arriving on campus of which 380 are associated from UK students, 230 from international and 90 from staff. This assumes all students will return to campus and that student numbers and where they come from are similar to previous years. According to the current UK government guidance approximately 237,370 students arriving on campus will be required to quarantine because they come from countries outwith designated travel corridors. Assuming quarantining is 100% efficient this will potentially reduce the overall number of cases by approximately 20% to 540 (95% CI: 500 - 590). Universities must plan for COVID-19 cases to arrive on campus and facilitate mitigations to reduce the spread of disease. It is likely that the first two weeks will be crucial to stop spread of introduced cases. Following that, the risk of introduction of new cases onto campus will be from interactions between students, staff and the local community as well as students travelling off campus for personal, educational or recreational reasons.

## Introduction

COVID-19 has resulted in the on-campus closure of HEIs across the UK in March 2020 (1). Since that point universities have been working predominantly as virtual establishments with most staff working from home. Autumn sees the start of the new academic term with the potential return of more than 1.5 million UK and almost half a million international students (2).

The COVID-19 pandemic continues to run its course across the world with approximately 1000 new cases reported each day in the UK, 25,000 across Europe and 250,000 worldwide ((3) accessed 28/03/20). There have been a number of outbreaks of COVID-19 reported in universities in the USA (The University of North Carolina, Notre Dame in Indiana, Colorado College, Oklahoma State and University of Alabama (4)) where the national infection rate is approximately 10 times higher than the UK (3). Both UK and Scottish governments are providing advice for HEIs regarding COVID-19 and this is continually evolving (5, 6). However, it is currently unknown to what extent COVID-19 will be brought to campus by staff and students whether from the UK or abroad.

**NOTE: This preprint reports new research that has not been certified by peer review and should not be used to guide clinical practice.**

Here we use current estimates of COVID-19 incidence from across the world together with student and staff numbers to determine the most likely number of COVID-19 cases to be introduced to each UK HEI campus at the start of the current term. We determine this by level of occupancy as it is not expected that all students will return to campus. We then determine the likely effect of government quarantine measures for international students and consider campus mitigations to reduce the spread of the virus.

## Materials and Methods

Our analysis considers 163 HEIs in the UK (see Table A1 in Annex). The Open University has been excluded from the analysis since it offers distance learning. The population of any given HEI is split into three subpopulations: Staff, students from UK and international students. For the  $i$ -th HEI, there are  $S_i$  members of staff,  $U_i$  students from UK and  $I_{ij}$  international students from each of the  $j = 1, 2, \dots, 212$  countries of domicile (see the numbers in Annex, Table S1). These numbers were downloaded from the Higher Education Statistics Agency for the 2018-2019 academic year (2, 7). Let  $n_i^S$ ,  $n_i^{UK}$  and  $n_{ij}^{Int}$  be the number of introduced cases arriving at HEI  $i$  linked to each of the subpopulations. We assume that these numbers obey binomial distributions:  $n_i^{UK} \sim \text{Bin}(U_i, p_{UK})$ ,  $n_{ij}^{Int} \sim \text{Bin}(I_{ij}, p_j)$  and  $n_i^S \sim \text{Bin}(S_i, p_{UK})$ . Here,  $p_{UK}$  and  $p_j$  are the probabilities that a randomly chosen individual from the UK or country  $j$  is a COVID-19 case, respectively. Based on the infectivity profile over time for individuals with COVID-19 (8), we regard as potentially infectious cases all those reported in the last 14 days. In particular, we based our estimates on cases reported until 22 August 2020 (3), i.e. the last 14 days used here are those preceding 22 August 2020. We assume the incidence of the virus in this period to be representative of the incidence at the time when students start arriving at HEIs in Autumn 2020. Following this, the ratio between the number of cases in the UK in the last 14 days and the population in the UK gives  $p_{UK} = 2.1 \times 10^{-4}$ . Similarly, the probability  $p_j$  is estimated by the ratio between the number of cases in country  $j$  in the last 14 days and the population of the country.

Based on the binomial assumption mentioned above, the probabilities that no case arrives at HEI  $i$  linked to each of the subpopulations are given by

$$\begin{aligned} \overline{Q}_i^{UK} &= (1 - p_{UK})^{U_i}, \\ \overline{Q}_i^{Int} &= \prod_{j=1}^{212} (1 - p_{ij})^{I_{ij}}, \\ \overline{Q}_i^S &= (1 - p_{UK})^{S_i}. \end{aligned} \tag{1}$$

The probabilities that at least one case linked to UK students, international students or staff are then given by  $Q_i^{UK} = 1 - \overline{Q}_i^{UK}$ ,  $Q_i^{Int} = 1 - \overline{Q}_i^{Int}$  and  $Q_i^S = 1 - \overline{Q}_i^S$ , respectively. The probability that there is at least one case at an institution  $i$  is  $Q_i = 1 - \overline{Q}_i^{UK} \overline{Q}_i^{Int} \overline{Q}_i^S$ .

The expected value of the number of introduced cases linked to each of the subpopulations at HEI  $i$  is given by:

$$\begin{aligned} E(n_i^{UK}) &= U_i p_{UK} , \\ E(X_i^{Int}) &= \sum_{j=1}^{212} I_{ij} p_{ij} , \\ E(n_i^S) &= S_i p_{UK} . \end{aligned} \tag{2}$$

Here,  $X_i^{Int}$  is the total number of cases from international students. The expected value for total number of cases arriving at HEI  $i$ ,  $n_i^{Tot} = n_i^S + n_i^{UK} + X_i^{Int}$  is simply the sum of the expected value given by Eq. (2).

Scenarios with different occupancies are simulated by reducing the number of UK and international students by a factor  $f \in [0,1]$ .

Quarantine of students coming from a country  $j$  is implemented by effectively setting  $I_{ij} = 0$  for the country, i.e. we assume that quarantine is 100% efficient. Quarantine is applied to all students with domicile in countries that are not within a UK travel corridor ((10) accessed 24/08/20).

## Results and Discussion

Generally, the larger the number of students and staff at an HEI the greater the likelihood of COVID-19 being introduced (Figure 1(a) black symbols). There is more than a 50% chance of at least one COVID-19 case arriving on Campus for institutions with more than ~3000 students assuming 100% occupancy (i.e. that all students return to campus). This corresponds to 81% of the 163 HEIs. For 65% student occupancy, 78% of institutions would still have a probability larger than 0.5. These are institutions with more than ~4000 students. Even for a low student occupancy of 30%, the probability of at least one case arriving on campus is greater than 50% for 67% of the HEIs. These are institutions with more than ~6000 students (green symbols in Figure 1(a)). For most HEIs (127/163) the probability of at least one student introducing COVID-19 to campus is higher for UK students than international students (Fig. 1(b)). This is mainly due to most UK HEIs (97%) having more UK than international students attending.

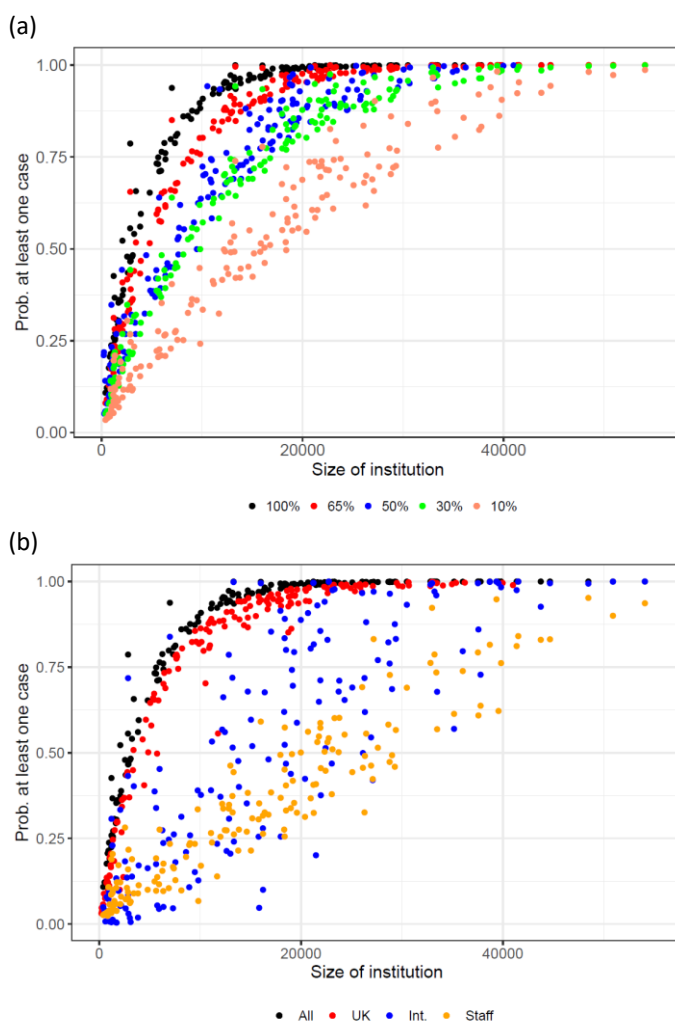


Figure 1. The probability of at least one case of COVID-19 being introduced to campus at the start of term for each institution stratified by (a) level of student occupancy and (b) students (UK or international) and staff assuming 100% occupancy. Note each point represents data from 1 of the 163 UK HEIs. The size of the institutions is the sum of the number of staff and the number of students.

The expected number of introduced cases to campus generally increases with institution size (Figure 2(a)). In total for all 163 HEIs, an average of approximately 700 COVID-19 cases (95% CI: 640 - 750) would expect to be introduced with 380 and 230 from UK and international students respectively, whilst 90 from staff. The mean number of cases varies from approximately 0.1 cases at The National Film and Television School to approximately 20 at University College London.

Quarantining the 237,370 students living outwith UK travel corridors would lead to a reduction of 154 cases on average (20% overall) with reductions of between 0 to approximately 77% across all HEIs (Figure 2(c)). This assumes that quarantining is 100% efficient. This will likely be a challenge due to students living in multiple occupancy private flats or halls of residence and having to go out to purchase food etc.

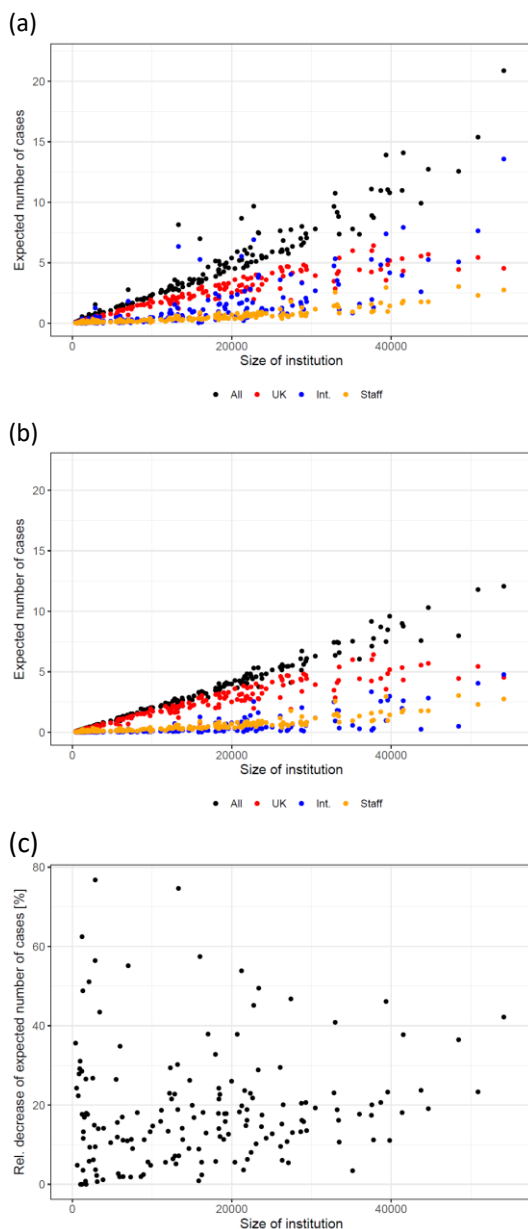


Figure 2. The expected number of cases for each HEI in the UK by size of institution and stratified by (a) staff and student type, (b) the same graph but after the effects of quarantining international students from non-travel corridor countries and (c) the percentage decrease of cases introduced to campus due to quarantine.

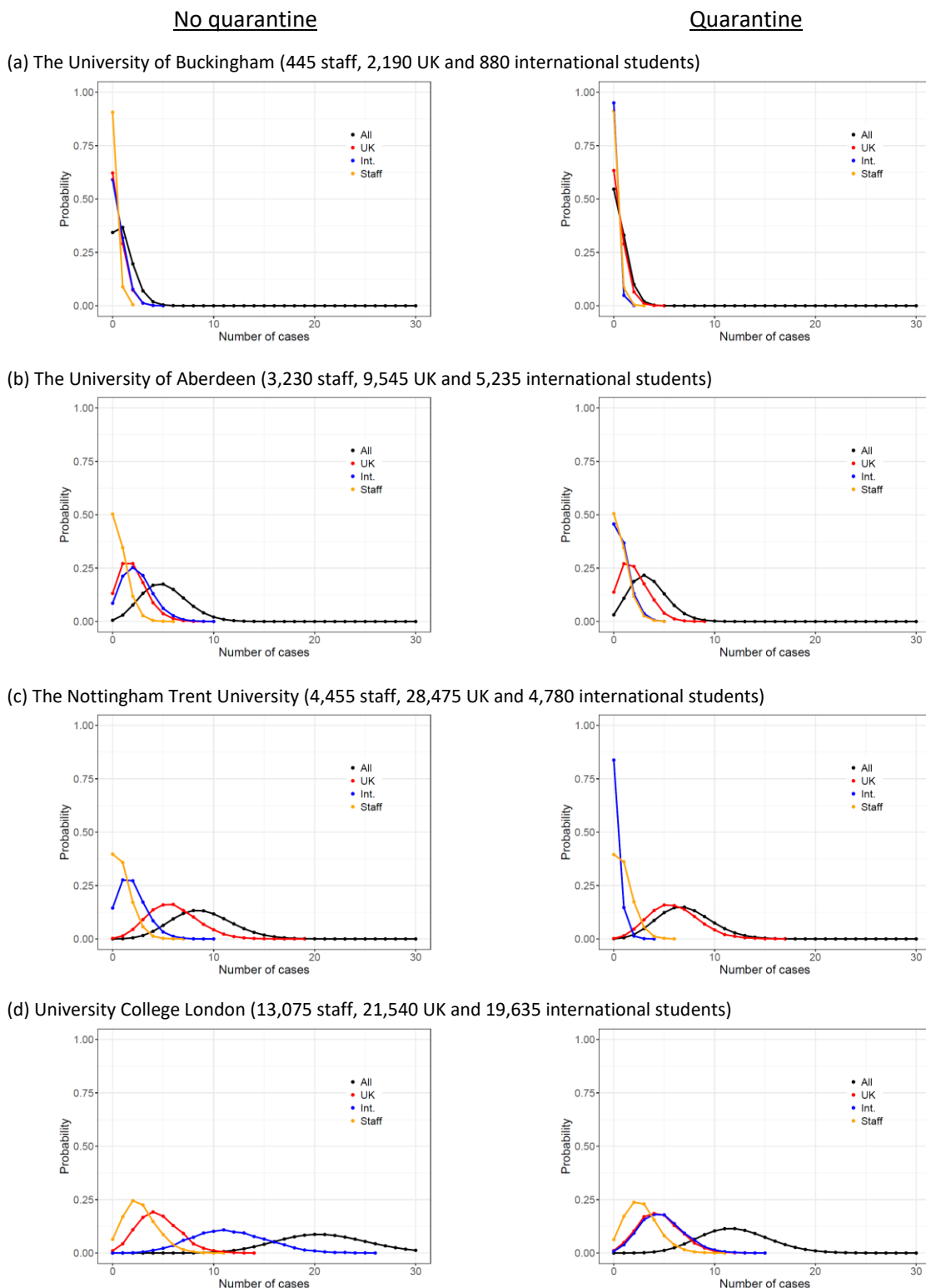


Figure 3. Probability distributions for the number of cases by staff and students type for (a) University of Buckingham (small), (b) University of Aberdeen (medium), (c) The Nottingham Trent University (large) (d) University College London (largest). Panels on the left show results without quarantine. Panels on the right show results with quarantine. All results assume 100% occupancy.

The analysis of the average number of cases expected to arrive into an institution gives a first approximation of the risk of outbreaks. Considering the variability of the number of cases in addition to the average, however, is important to properly assess the risk. Figure 3 shows in detail probability distributions for the number of cases arriving on campus, for exemplar small (University of Buckingham), medium (University of Aberdeen) and large (Nottingham Trent University and University College London) institutions in terms of student numbers with and without quarantine of international students. These are estimates for 100% occupancy. For large HEIs such as University College London, the predicted number of introduced cases is 21 (95% CI: 12 - 30), i.e. between 12 and 30 cases could arrive on campus (see the black curve in the left panel of Figure 3(d)). Since University College London has a large number of international students, the number of cases might significantly reduce to 12 (95% CI: 6 - 19) if international students that are not within travel corridors quarantine on arrival to the UK (compare the black curves in the left and right panels of Figure 3(d)). The estimated number of cases arriving at the Nottingham Trent University is 9 (95% CI: 4 - 15). Quarantine of international students would only reduce these values to 7 (95% CI: 2 - 13). For the University of Aberdeen, we estimate 5 (95% CI: 1 - 10) cases arriving on campus (left panel of Figure 3(b)). When taking quarantine into account, the predicted number of cases reduces to 3 (95% CI: 0 - 8). For a smaller institution such as the University of Buckingham, the expected number of cases is 1 (95% CI: 1 - 3) without quarantine and 0 (95% CI: 0 - 2) with quarantine.

Figure 4 shows the effect of reduced student occupancy on the expected number of cases arriving at the four exemplar institutions selected above. Interestingly, the expected number of cases in relatively large institutions remains high even if occupancy is significantly reduced. For a 65% student occupancy, on average 14.5, 6.1, 3.6 and 0.7 cases would be expected to arrive in University College London, Nottingham Trent University, University of Aberdeen and University of Buckingham. When considering quarantining, these numbers reduce to 8.8, 5.0, 2.5 and 0.4 respectively.

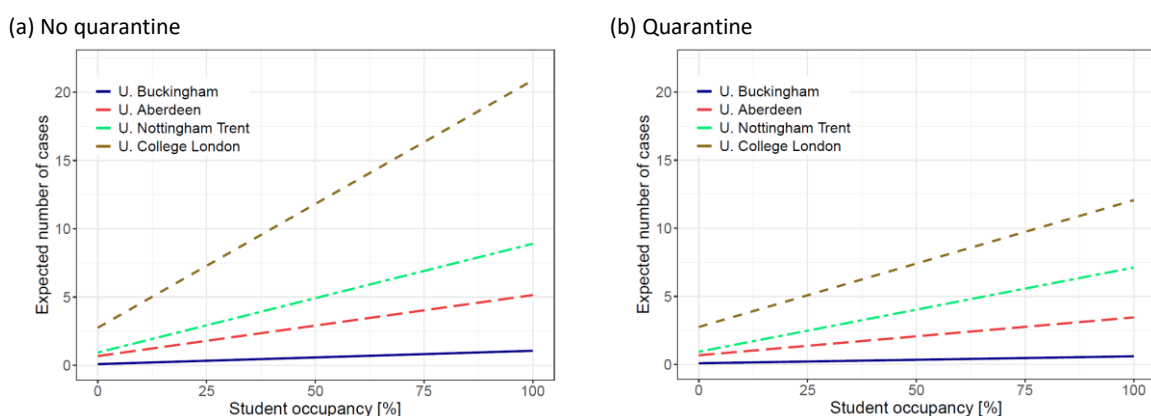


Figure 4. The expected number of cases arriving on campus as a function of student occupancy for selected HEIs assuming (a) no quarantine or (b) quarantine for international students outwith from travel corridors.

The analysis performed here is based on a number of assumptions. First, that all the students attend university in the Autumn. This will be an overestimate because some postgraduate courses have intakes after Christmas and so these students will not be attending in October. Second, it is assumed that the country which the students call home is where they are coming from. Some may have spent the summer in the UK and some will have spent the summer elsewhere. Indeed, some UK students

may also have spent the summer abroad. Third, it is assumed that the incidence of COVID-19 is uniform for each country and it is reported accurately. However, it is known that there is a great deal of heterogeneity within a country due to local outbreaks, this can be seen in the UK (11, 12) as well as countries abroad (13–15). With the available data, it has not been possible to incorporate this heterogeneity into the analysis at a worldwide level. Fourth, the incidence has been estimated based on reported cases. This is likely to underestimate the actual incidence which may include a significant number of unreported cases (16, 17). Fifth, it is assumed that the data used from 2018/19 will be representative of the student cohort joining HEIs in 2020/21. However, extra funding/places has been made available to HEIs because of the higher grades school pupils have been awarded in the UK due to this being decided on teachers estimates rather than final exams (18). Also, as a consequence of BREXIT, there may well be fewer new EU students joining UK universities this year than previously due to changes in payment of fees. However, these two changes will only affect new students so should not modify the figures substantially. Hence, because of these assumptions the figures presented must be regarded as estimates and can be refined as more data becomes available.

Many British HEIs plan to offer Blended Learning this academic year which involves a combination of on-campus and on-line teaching (19). As mentioned above both UK and Scottish governments are providing advice for HEIs (5, 6). Already some universities have released advice for students regards physical distancing, use of face masks, instructions for use of buildings, etc (20). The independent SAGE group has also suggested that face to face teaching should not occur except for practical training or lab work and have provided a number of recommendations to reduce the risk of COVID-19 transmission on-campus (21).

The current study which suggests 700 (95% CI: 640 - 750) cases from 212 countries arriving on-campus indicates testing of all students on arrival at campus is impractical since the UK currently has ~350,000 testing capacity per day (22). Also, it is estimated that most cases arriving on campus will be from UK students, due to the larger number of UK students attending and that quarantining of international students has the potential to significantly reduce the spread of COVID-19 on campus.

This paper provides results on the potential introduction of COVID-19 onto campus but it does not discuss the potential for spread during term. However, it is likely that the first two weeks returning to campus will be crucial in controlling the spread of this pathogen. “Freshers flu” which comprises a battery of different illnesses (colds, flu etc) has been reported to arise early in term due to proximate mixing of students after the summer break and the emergence of various seasonal respiratory diseases (23, 24). This is also likely to be the case for COVID-19 unless appropriate steps are taken to facilitate its onward transmission. Co-circulation of COVID-19 and other seasonal respiratory diseases which share symptoms with COVID-19 (e.g. colds or flu) poses significant uncertainties on the spread of all these diseases (25). These uncertainties are not only relevant during the first weeks on campus. Indeed, during term there is the potential for repeated introduction of the virus onto campus due to interactions between students and the local community as well as from staff and their external social networks. The extent to which this will arise will be dependent both on the number of interactions as well as the prevalence in the wider community.



## Conclusion

The results presented here show that most UK HEIs will have at least one COVID-19 case on campus even if only 65% of students return to campus in the Autumn. Quarantining of students outwith travel corridors decreases by 21% the expected number of COVID-19 cases arriving on campus but the chances that there will be at least one case are not very much affected by quarantining. Hence, it will be prudent for HEIs to plan for COVID-19 cases to arrive on campus and facilitate mitigations to reduce the spread of disease. It is likely that the first two weeks of term will be crucial to stop spread of introduced cases. Following that, the risk of introduction of new cases onto campus will be from interactions between students, staff and the local community as well as students travelling off campus for personal, educational or recreational reasons.

## Annex

Table A1. Population of HEIs and expected number of COVID-19 cases introduced to each institution this autumn. The expected number of cases from international students is given both with and without quarantine (see last two columns). Results provided assume 100% occupancy.

Name of HEI	Number of staff	Number of UK students	Number of international students	Expected cases, staff	Expected cases, UK students	Expected cases, international students, no quarantine	Expected cases, international students, with quarantine
The University of Aberdeen	3,230	9,545	5,235	0.68	2.01	2.46	0.77
University of Abertay Dundee	500	3,675	680	0.11	0.77	0.18	0.07
Aberystwyth University	1,935	6,485	1,360	0.41	1.37	0.49	0.19
AECC University College	160	370	225	0.03	0.08	0.08	0.04
Anglia Ruskin University	1,870	20,950	3,540	0.39	4.42	1.27	0.34
Aston University	1,825	12,525	2,465	0.38	2.64	0.65	0.18
Bangor University	2,050	8,230	1,965	0.43	1.73	0.84	0.15
Bath Spa University	1,280	7,195	575	0.27	1.52	0.3	0.06
The University of Bath	3,595	12,495	5,570	0.76	2.63	2.66	1.23
University of Bedfordshire	1,145	10,440	3,485	0.24	2.2	0.91	0.24
Queen's University Belfast	4,140	20,915	3,780	0.87	4.41	1.73	0.8
Birkbeck College	1,870	10,015	1,375	0.39	2.11	0.72	0.11
Birmingham City University	3,220	22,895	2,960	0.68	4.83	1.16	0.1
The University of Birmingham	8,400	26,320	9,125	1.77	5.55	2.61	0.25
University College Birmingham	630	3,300	1,600	0.13	0.7	0.49	0.14
The University of Bolton	650	6,360	585	0.14	1.34	0.2	0.05
The Arts University Bournemouth	570	2,830	560	0.12	0.6	0.19	0.06
Bournemouth University	1,865	15,680	2,200	0.39	3.3	0.89	0.31
The University of Bradford	1,465	8,250	1,415	0.31	1.74	0.49	0.09
The University of Brighton	3,305	17,785	2,685	0.7	3.75	1.13	0.32
The University College of Osteopathy	145	440	50	0.03	0.09	0.01	0
The University of Bristol	7,335	19,450	6,505	1.55	4.1	3.53	1.8
Brunel University London	2,300	10,680	4,110	0.48	2.25	1.92	0.15

Buckinghamshire New University	710	10,200	800	0.15	2.15	0.27	0.12
The University of Buckingham	445	2,190	880	0.09	0.46	0.51	0.05
The University of Cambridge	12,165	13,545	7,350	2.56	2.85	5.33	0.94
The Institute of Cancer Research	1,085	230	35	0.23	0.05	0.01	0
Canterbury Christ Church University	1,730	13,445	725	0.36	2.83	0.42	0.1
Cardiff University	6,805	24,570	8,620	1.43	5.18	4.17	2.98
Cardiff Metropolitan University	1,395	9,335	1,340	0.29	1.97	0.46	0.1
The University of Central Lancashire	3,200	20,445	2,720	0.67	4.31	0.96	0.6
University of Chester	1,805	13,585	990	0.38	2.86	0.33	0.13
The University of Chichester	920	5,295	170	0.19	1.12	0.05	0.02
City, University of London	3,385	13,045	7,170	0.71	2.75	3.99	0.3
Conservatoire for Dance and Drama	615	965	545	0.13	0.2	0.41	0.03
Courtauld Institute of Art	140	280	215	0.03	0.06	0.04	0.01
Coventry University	4,615	22,985	12,000	0.97	4.84	5.23	2.66
Cranfield University	1,530	2,465	2,025	0.32	0.52	0.6	0.1
University for the Creative Arts	840	5,535	1,080	0.18	1.17	0.3	0.12
University of Cumbria	1,035	7,235	360	0.22	1.52	0.24	0.2
De Montfort University	3,040	20,465	5,290	0.64	4.31	1.5	0.18
University of Derby	2,880	17,380	1,765	0.61	3.66	0.47	0.17
The University of Dundee	3,250	13,300	2,615	0.68	2.8	1.35	0.49
University of Durham	4,360	13,270	5,755	0.92	2.8	3.78	1.62
The University of East Anglia	4,035	14,130	3,795	0.85	2.98	1.93	1
The University of East London	1,490	11,520	1,875	0.31	2.43	0.43	0.15
Edge Hill University	2,060	13,495	340	0.43	2.84	0.05	0.02
Edinburgh Napier University	1,750	10,745	2,850	0.37	2.26	0.98	0.37
The University of Edinburgh	14,410	21,090	13,185	3.04	4.45	5.08	0.5
The University of Essex	2,845	10,880	4,720	0.6	2.29	1.55	0.47
The University of Exeter	5,555	18,680	6,330	1.17	3.94	2.69	1.19

Falmouth University	525	5,730	690	0.11	1.21	0.28	0.11
The National Film and Television School	125	180	115	0.03	0.04	0.05	0.01
Glasgow Caledonian University	1,530	14,755	2,105	0.32	3.11	0.96	0.18
Glasgow School of Art	530	1,480	805	0.11	0.31	0.15	0.06
The University of Glasgow	8,015	21,120	9,685	1.69	4.45	4.83	2.56
University of Gloucestershire	1,265	7,750	510	0.27	1.63	0.16	0.05
Glyndŵr University	480	5,020	870	0.1	1.06	0.27	0.11
Goldsmiths College	1,950	7,580	2,830	0.41	1.6	1.08	0.18
The University of Greenwich	2,170	14,740	4,200	0.46	3.11	1.63	0.68
Guildhall School of Music and Drama	895	725	360	0.19	0.15	0.1	0.02
Harper Adams University	585	5,115	260	0.12	1.08	0.05	0.02
Hartpury University	395	1,670	145	0.08	0.35	0.06	0.01
Heriot-Watt University	1,950	7,775	3,160	0.41	1.64	1.54	0.72
University of Hertfordshire	3,430	19,730	4,550	0.72	4.16	1.47	0.64
The University of Huddersfield	2,070	14,115	3,180	0.44	2.97	1.58	0.69
The University of Hull	2,460	13,855	2,240	0.52	2.92	0.64	0.15
Imperial College of Science, Technology and Medicine	8,460	9,040	10,075	1.78	1.91	4.05	0.43
Keele University	2,030	9,950	920	0.43	2.1	0.33	0.12
The University of Kent	3,590	15,075	4,190	0.76	3.18	1.71	0.48
King's College London	8,710	20,510	12,385	1.84	4.32	7.92	2.61
Kingston University	1,910	13,500	3,320	0.4	2.85	1.61	0.51
The University of Lancaster	4,045	9,770	4,695	0.85	2.06	2.22	1.11
Leeds Arts University	285	1,680	165	0.06	0.35	0.05	0.03
Leeds Beckett University	2,890	21,890	1,385	0.61	4.61	0.69	0.13
Leeds College of Music	330	1,090	90	0.07	0.23	0.07	0.01
The University of Leeds	8,440	27,020	9,235	1.78	5.69	5.26	2.83
Leeds Trinity University	445	3,365	50	0.09	0.71	0.02	0.01
The University of Leicester	3,910	12,870	3,985	0.82	2.71	2.38	0.14

The University of Lincoln	2,180	14,800	1,075	0.46	3.12	0.29	0.07
Liverpool Hope University	700	4,920	180	0.15	1.04	0.06	0.02
Liverpool John Moores University	2,945	22,255	1,775	0.62	4.69	0.79	0.13
The Liverpool Institute for Performing Arts	190	635	185	0.04	0.13	0.1	0.01
The University of Liverpool	6,365	20,980	8,715	1.34	4.42	1.59	0.29
Liverpool School of Tropical Medicine	540	245	175	0.11	0.05	0.08	0.01
University of the Arts, London	3,710	9,400	9,695	0.78	1.98	6.91	2.54
London Business School	825	500	1,580	0.17	0.11	1.26	0.08
University of London (Institutes and activities)	995	150	90	0.21	0.03	0.06	0
London Metropolitan University	885	8,225	975	0.19	1.73	0.47	0.12
London South Bank University	1,960	15,545	1,575	0.41	3.28	0.58	0.09
London School of Economics and Political Science	4,240	3,855	8,000	0.89	0.81	5.28	1.27
London School of Hygiene and Tropical Medicine	1,570	565	605	0.33	0.12	0.2	0.03
Loughborough University	3,765	13,880	4,145	0.79	2.93	1.05	0.34
The Manchester Metropolitan University	4,810	30,450	2,600	1.01	6.42	1.3	0.32
The University of Manchester	10,925	25,810	14,440	2.3	5.44	7.64	4.05
Middlesex University	1,860	15,050	4,580	0.39	3.17	1.7	0.65
Newcastle University	6,290	20,335	6,880	1.33	4.29	3.21	1.78
Newman University	320	2,780	20	0.07	0.59	0.01	0
The University of Northampton	1,440	10,230	1,750	0.3	2.16	0.28	0.08
University of Northumbria at Newcastle	2,915	22,350	4,100	0.61	4.71	2.08	0.55
Norwich University of the Arts	355	2,135	170	0.07	0.45	0.05	0.01
University of Nottingham	7,915	25,370	8,175	1.67	5.35	3.96	1.98
The Nottingham Trent University	4,455	28,475	4,780	0.94	6	1.96	0.18

Oxford Brookes University	2,570	13,920	2,745	0.54	2.93	1.19	0.45
The University of Oxford	14,030	16,890	8,500	2.96	3.56	7.39	0.97
Plymouth College of Art	290	1,340	40	0.06	0.28	0.01	0
University of Plymouth	2,815	17,795	1,850	0.59	3.75	0.72	0.31
The University of Portsmouth	3,965	21,040	4,475	0.84	4.43	1.79	0.83
Queen Margaret University, Edinburgh	485	4,110	1,115	0.1	0.87	0.41	0.2
Queen Mary University of London	5,580	13,625	6,935	1.18	2.87	3.59	1.34
Ravensbourne University London	380	2,180	345	0.08	0.46	0.09	0.03
The University of Reading	4,195	13,520	4,285	0.88	2.85	1.24	0.3
The Robert Gordon University	1,530	10,310	2,025	0.32	2.17	0.51	0.17
Roehampton University	1,145	11,465	1,195	0.24	2.42	0.65	0.18
Rose Bruford College of Theatre and Performance	115	610	125	0.02	0.13	0.08	0.01
Royal Academy of Music	450	485	395	0.09	0.1	0.26	0.04
Royal Agricultural University	240	1,010	140	0.05	0.21	0.05	0.01
Royal College of Art	465	700	1,700	0.1	0.15	0.57	0.11
Royal College of Music	425	410	415	0.09	0.09	0.1	0.02
Royal Conservatoire of Scotland	530	860	415	0.11	0.18	0.14	0.03
The Royal Central School of Speech and Drama	180	715	340	0.04	0.15	0.37	0.02
Royal Holloway and Bedford New College	2,220	7,970	3,070	0.47	1.68	1.27	0.24
Royal Northern College of Music	500	615	265	0.11	0.13	0.06	0.03
The Royal Veterinary College	995	1,990	530	0.21	0.42	0.15	0.04
The University of St Andrews	2,780	5,755	4,820	0.59	1.21	6.35	0.27
St George's, University of London	1,010	4,305	385	0.21	0.91	0.19	0.04
St Mary's University College	155	1,025	20	0.03	0.22	0.01	0.01

St Mary's University, Twickenham	800	5,045	450	0.17	1.06	0.32	0.06
The University of Salford	2,260	19,010	1,805	0.48	4.01	0.63	0.11
SOAS University of London	1,265	3,265	2,530	0.27	0.69	1.82	0.29
SRUC	1,160	1,680	80	0.24	0.35	0.03	0.01
Sheffield Hallam University	4,510	28,465	2,250	0.95	6	0.84	0.58
The University of Sheffield	7,470	20,115	10,080	1.57	4.24	5.28	3.35
Solent University	1,290	8,090	1,820	0.27	1.71	0.76	0.25
The University of Southampton	6,160	16,030	6,685	1.3	3.38	3.33	2.04
Staffordshire University	1,450	14,380	475	0.31	3.03	0.11	0.02
The University of Stirling	2,290	9,630	2,830	0.48	2.03	1.13	0.18
University of St Mark and St John	300	2,705	70	0.06	0.57	0.02	0
Stranmillis University College	185	1,520	15	0.04	0.32	0	0
The University of Strathclyde	3,850	18,485	4,155	0.81	3.9	2.13	0.76
University of Suffolk	490	7,070	625	0.1	1.49	0.38	0.02
The University of Sunderland	1,870	11,930	2,775	0.39	2.51	1.13	0.4
The University of Surrey	3,295	11,925	4,890	0.69	2.51	2.19	0.78
The University of Sussex	3,320	13,000	6,150	0.7	2.74	2.83	1.39
Swansea University	3,820	17,065	3,555	0.81	3.6	1.06	0.42
Teesside University	1,780	17,100	1,570	0.38	3.6	0.55	0.3
Trinity Laban Conservatoire of Music and Dance	615	895	295	0.13	0.19	0.13	0.05
University of Wales Trinity Saint David	1,515	10,510	625	0.32	2.22	0.24	0.06
University of the Highlands and Islands	330	9,190	335	0.07	1.94	0.14	0.03
Ulster University	2,610	22,170	2,360	0.55	4.67	0.54	0.23
University College London	13,075	21,540	19,635	2.76	4.54	13.58	4.77
University of South Wales	2,780	19,700	2,630	0.59	4.15	1.17	0.42
The University of Warwick	6,815	16,500	9,580	1.44	3.48	4.74	2.51
University of the West of England, Bristol	3,990	25,610	3,950	0.84	5.4	1.13	0.35
The University of the West of Scotland	1,400	15,040	1,985	0.3	3.17	0.74	0.15

The University of West London	1,520	9,100	1,960	0.32	1.92	0.82	0.16
The University of Westminster	2,475	12,440	6,445	0.52	2.62	5.53	0.86
The University of Winchester	1,245	7,325	445	0.26	1.54	0.11	0.07
The University of Wolverhampton	2,490	18,190	860	0.52	3.83	0.22	0.06
University of Worcester	2,945	9,435	640	0.62	1.99	0.23	0.08
Writtle University College	280	690	60	0.06	0.15	0.01	0.01
York St John University	865	6,265	350	0.18	1.32	0.05	0.02
The University of York	4,370	15,280	4,185	0.92	3.22	1.24	0.3
<b>Total</b>	<b>431,090</b>	<b>1,772,210</b>	<b>485,340</b>	<b>90.77</b>	<b>373.53</b>	<b>232.46</b>	<b>78.01</b>

## References

1. More universities halt teaching and exams. *BBC News* (2020), (available at <https://www.bbc.com/news/education-51880355>).
2. Where do HE students come from? | HESA, (available at <https://www.hesa.ac.uk/data-and-analysis/students/where-from>).
3. Coronavirus (COVID-19) Cases - Statistics and Research. *Our World Data*, (available at <https://ourworldindata.org/covid-cases>).
4. T. N. Y. Times, Tracking Coronavirus Cases at U.S. Colleges and Universities. *N. Y. Times* (2020), (available at <https://www.nytimes.com/interactive/2020/us/covid-college-cases-tracker.html>).
5. Further and higher education: coronavirus (COVID-19). *GOV.UK*, (available at <https://www.gov.uk/government/collections/further-and-higher-education-coronavirus-covid-19>).
6. Coronavirus (COVID-19): guidance for universities - gov.scot, (available at <https://www.gov.scot/publications/coronavirus-covid-19-guidance-for-universities/>).
7. Table 1 - HE staff by HE provider and activity standard occupational classification 2014/15 to 2018/19 | HESA, (available at <https://www.hesa.ac.uk/data-and-analysis/staff/table-1>).
8. S. Flaxman, S. Mishra, A. Gandy, H. J. T. Unwin, T. A. Mellan, H. Coupland, C. Whittaker, H. Zhu, T. Berah, J. W. Eaton, M. Monod, A. C. Ghani, C. A. Donnelly, S. Riley, M. A. C. Vollmer, N. M. Ferguson, L. C. Okell, S. Bhatt, Estimating the effects of non-pharmaceutical interventions on COVID-19 in Europe. *Nature*, 1–5 (2020).
9. Y. H. Wang, On the number of successes in independent trials. *Stat. Sin.* **3**, 295–312 (1993).
10. Coronavirus (COVID-19): travel corridors. *GOV.UK*, (available at <https://www.gov.uk/guidance/coronavirus-covid-19-travel-corridors>).



11. Coronavirus in the UK: How many confirmed cases are there in your area? *BBC News* (2020), (available at <https://www.bbc.com/news/uk-51768274>).
12. Coronavirus (COVID-19): daily data for Scotland - gov.scot, (available at <https://www.gov.scot/publications/coronavirus-covid-19-daily-data-for-scotland/>).
13. RTVE.es, Mapa del coronavirus en España: 29.011 muertos y más de 439.000 contagiados. *RTVE.es* (2020), (available at <https://www.rtve.es/noticias/20200830/mapa-del-coronavirus-espana/2004681.shtml>).
14. COVID-19 situation update for the EU/EEA and the UK, as of 31 August 2020. *Eur. Cent. Dis. Prev. Control*, (available at <https://www.ecdc.europa.eu/en/cases-2019-ncov-eueea>).
15. RKI - Coronavirus SARS-CoV-2 - Aktueller Lage-/Situationsbericht des RKI zu COVID-19, (available at [https://www.rki.de/DE/Content/InfAZ/N/Neuartiges\\_Coronavirus/Situationsberichte/Gesamt.html](https://www.rki.de/DE/Content/InfAZ/N/Neuartiges_Coronavirus/Situationsberichte/Gesamt.html)).
16. R. Li, S. Pei, B. Chen, Y. Song, T. Zhang, W. Yang, J. Shaman, Substantial undocumented infection facilitates the rapid dissemination of novel coronavirus (SARS-CoV2). *Science*, eabb3221 (2020).
17. F. J. Perez-Reche, K. J. Forbes, N. J. C. Strachan, Importance of untested infectious individuals for the suppression of COVID-19 epidemics. *medRxiv*, doi:10.1101/2020.04.13.20064022.
18. A. Fazackerley, “We were already full”: universities face nightmare of exams chaos and Covid-19. *The Guardian* (2020), (available at <https://www.theguardian.com/education/2020/aug/21/universities-warn-of-pandemic-risk-if-upgraded-a-level-students-admitted>).
19. UK universities favour blended learning approach for 2020-21. *Times High. Educ.* (2020), (available at <https://www.timeshighereducation.com/news/uk-universities-favour-blended-learning-approach-2020-21>).
20. Stay Safe Cambridge Uni. *Univ. Camb.*, (available at <https://www.cam.ac.uk/coronavirus/stay-safe-cambridge-uni>).
21. The Independent Scientific Advisory Group for Emergencies (SAGE), “Independent SAGE-Behaviour Group Consultation Statement on Universities in the context of SARS-CoV-2” (9, 2020), (available at <https://documentcloud.adobe.com/link/review?uri=urn:aaid:scds:US:8606a4a2-9237-4f70-8e8e-8a5384a8db39>).
22. Coronavirus (COVID-19) in the UK: Testing, (available at <https://coronavirus.data.gov.uk/testing>).
23. Freshers’ Flu. *Wikipedia* (2020), (available at [https://en.wikipedia.org/w/index.php?title=Freshers%27\\_Flu&oldid=975064778](https://en.wikipedia.org/w/index.php?title=Freshers%27_Flu&oldid=975064778)).
24. S. Nickbakhsh, C. Mair, L. Matthews, R. Reeve, P. C. D. Johnson, F. Thorburn, B. von Wissmann, A. Reynolds, J. McMenamin, R. N. Gunson, P. R. Murcia, Virus–virus interactions impact the population dynamics of influenza and the common cold. *Proc. Natl. Acad. Sci.* **116**, 27142 (2019).

25. D. MacKenzie, What happens when flu meets Covid-19? *The Observer* (2020), (available at <https://www.theguardian.com/society/2020/jul/19/what-happens-when-flu-meets-covid-19>).