

COVID-19 Myocardial Pathology Evaluated Through scrEening Cardiac Magnetic Resonance (COMPETE CMR)

Brief Title: COMPETE CMR

Authors:

Daniel E. Clark MD, MPH¹
Amar Parikh MD¹
Jeffrey M. Dendy MD¹
Alex B. Diamond, DO, MPH²
Kristen George-Durrett, BS³
Frank A. Fish, MD^{1,3}
Warne Fitch, MD²
Sean G. Hughes MD^{1*}
Jonathan H. Soslow MD, MSCI^{3*}

Affiliations:

1 Vanderbilt University Medical Center, Division of Cardiovascular Medicine, Department of Internal Medicine, Nashville, TN, USA

2 Vanderbilt University Medical Center, Department of Orthopaedic Surgery and Sports Medicine, Nashville, TN, USA

3 Monroe Carell Jr. Children's Hospital at Vanderbilt, Thomas P. Graham Division of Pediatric Cardiology, Department of Pediatrics, Nashville, TN, USA

*Co-senior authors listed in alphabetical order

Funding:

Research reported in this publication was supported by the National Heart, Lung, and Blood Institute of the National Institutes of Health under Award Number T32HL007411. The content is solely the responsibility of the authors and does not necessarily represent the official views of the National Institutes of Health.

Disclosures:

All authors have no disclosures to report, including any relationship to industry.

Address for correspondence:

Daniel E. Clark, MD, MPH
Daniel.e.clark@vumc.org
2220 Pierce Avenue
383 Preston Research Building
Nashville, TN 37237
@DanClarkMD

Tweet: Cardiac sequelae among athletes with asymptomatic or mild COVID-19 only 9% by #whyCMR, but may occur without symptoms and be missed by #echofirst.

Word Count: 4,687

Abstract

Background Myocarditis is a leading cause of sudden cardiac death among competitive athletes and may occur without antecedent symptoms. COVID-19-associated myocarditis has been well-described, but the prevalence of myocardial inflammation and fibrosis in young athletes after COVID-19 infection is unknown.

Objectives This study sought to evaluate the prevalence and extent of cardiovascular involvement in collegiate athletes that had recently recovered from COVID-19.

Methods We conducted a retrospective cohort analysis of collegiate varsity athletes with prior COVID-19 infection, all of whom underwent cardiac magnetic resonance (CMR) prior to resumption of competitive sports in August 2020.

Results Twenty-two collegiate athletes with prior COVID-19 infection underwent CMR. The median time from SARS-CoV-2 infection to CMR was 52 days. The mean age was 20.2 years. Athletes represented 8 different varsity sports. This cohort was compared to 22 healthy controls and 22 tactical athlete controls. Most athletes experienced mild illness (N=17, 77%), while the remainder (23%) were asymptomatic. No athletes had abnormal troponin I, electrocardiograms, or LVEF < 50% on echocardiography. Late gadolinium enhancement was found in 9% of collegiate athletes and one athlete (5%) met formal criteria for myocarditis.

Conclusions Our study suggests that the prevalence of myocardial inflammation or fibrosis after an asymptomatic or mild course of ambulatory COVID-19 among competitive athletes is modest (9%), but would be missed by ECG, T_i, and strain echocardiography. Future investigation is necessary to further phenotype cardiovascular manifestations of COVID-19 in order to better counsel athletes on return to sports participation.

Condensed Abstract

COVID-19-associated myocarditis has been well-described, but the prevalence of myocardial inflammation and fibrosis in athletes after COVID-19 is unknown. We conducted a retrospective cohort analysis of 22 collegiate athletes with prior COVID-19 infection who underwent electrocardiography, troponin I, echocardiography with strain, and CMR. The median time from SARS-CoV-2 infection to CMR was 52 days. All athletes experienced mild illness or were asymptomatic. Late gadolinium enhancement was found in 9%. This suggests the prevalence of myocardial inflammation or fibrosis after an asymptomatic or mild course of COVID-19 among competitive athletes is modest, but would be missed without CMR screening.

Key words

COVID-19

Myocarditis

Cardiac magnetic resonance

Athletes

Abbreviations

CMR	cardiac magnetic resonance
COVID-19	coronavirus disease-19
ECG	electrocardiogram
ECV	extracellular volume
LGE	late gadolinium enhancement
MIS-C	multisystem inflammatory syndrome
MOLLI	modified Look-Locker inversion recovery
ROI	regions of interest
SARS-CoV-2	severe acute respiratory syndrome coronavirus-2
SD	standard deviation

INTRODUCTION

Over 25 million people worldwide have now tested positive for coronavirus disease-19 (COVID-19), and over 843,000 have died of severe acute respiratory syndrome coronavirus-2 (SARS-CoV-2).(1) Though respiratory symptoms predominate in the early course of disease, cardiovascular complications are increasingly recognized as a cause of morbidity and mortality later in the disease process. Pre-existing cardiovascular disease and traditional cardiac risk factors have been shown to increase the risk of cardiac complications of COVID-19 infection, but even healthy and asymptomatic COVID-19 survivors have suffered cardiac complications.(2) Echocardiography has revealed a high prevalence (8%) of myocardial infarction, myocarditis, or Takotsubo cardiomyopathy among hospitalized patients with presumed or confirmed COVID-19 infection.(3) Most recently, in a large, predominantly ambulatory cohort, cardiac magnet resonance (CMR) revealed myopericardial inflammation or scarring in 78 of 100 patients after recovery from COVID-19 infection.(4)

As school and athletics resume on many college campuses this fall, the safe return of student-athletes to sport is a major public health concern. Although competitive athletes may be less likely to suffer morbidity during acute COVID-19 infection than the general population, they may be at heightened risk for malignant arrhythmia during strenuous exertion from sequelae of COVID-19 associated myocarditis.(5) The prevalence of persistent myocardial inflammation and fibrosis in young athletes after COVID-19 infection is not known. Meanwhile, myocarditis represents the third leading cause of SCD among US competitive athletes, and may occur without any antecedent symptoms.(6,7) Athletic departments and academic centers are devising return-to-competition guidelines without clear data on the prevalence of cardiovascular

abnormalities after COVID-19. We sought to use comprehensive cardiac magnetic resonance (CMR) to assess the prevalence and extent of cardiovascular sequelae in collegiate athletes that had recently recovered at home from COVID-19 infection.

METHODS

Study design and patient population

We conducted a retrospective cohort analysis of varsity athletes from a single National Collegiate Athletic Association (NCAA) Division 1 Power 5 institution referred for CMR after COVID-19 infection. Since August 2020 varsity athletes at this institution were screened for SARS-CoV-2 infection upon return to campus and twice weekly (real-time polymerase chain reaction nasal swab), regardless of symptomatology. The frequency of screening is anticipated to increase with return of the Southeastern Conference fall athletic season, as all athletes must have a negative SARS-CoV-2 test 72 hours prior to competition. In all COVID-19+ athletes, the protocol necessitates an electrocardiogram read by a Sports Cardiologist, troponin I, echocardiogram with strain imaging, and contrasted CMR. Only athletes over 18 years of age were included in this analysis. Clinical demographics, laboratory, electrocardiographic, and CMR results were stored in the REDCap electronic platform.(8)

Healthy controls were used from a cohort of healthy adult subjects over 18 years old who had previously consented for non-contrasted CMR imaging, including parametric mapping; these controls were a subset of the subjects used to derive our laboratory's normal control values. Additional athletic controls were selected from a cohort of tactical athletes referred to our center over the past 12 months for cardiac symptomatology found to have normal cardiac function

without pathology. As most controls were non-contrast or did not have available hematocrit, ECV values were compared to published reference ranges. The mid-septal ECV from “The International T1 Multicenter Cardiovascular Magnetic Resonance Study” was used for healthy control group comparison (Group 1, < 30 years old, N=27 for 1.5-T).(9) Given that cardiomyocyte hypertrophy among athletes is known to result in lower ECV than healthy controls, literature normative values for ECV among athletes was used for comparison for the athletic control group (N=30, mean age 28 years).(10) No controls (healthy or tactical athletic) underwent routine testing with ECG, cardiac biomarkers, or echocardiography. Tactical athletes did not undergo T₂ mapping.

Our laboratory’s normal values for parametric mapping are derived from a cohort of 54 healthy controls of varying age (range 7-56 years old) and gender (N=29 male) prospectively enrolled and then broken down into the appropriate gender and age (>18 y/o and <18 y/o) category for comparison. The normal ranges were derived from the mean and standard deviation by setting 2 standard deviations above the mean as the upper range of normal. For this manuscript, we considered presence of any LGE abnormal. LVEF 50-55% was not considered abnormal given the possibility of borderline to mildly depressed function in patients with athlete’s heart.(11)

CMR protocol

A comprehensive CMR with contrast was performed on a 1.5 Tesla Siemens Avanto Fit (Siemens Healthcare Sector, Erlangen, Germany). The CMR protocol consisted of cine CMR balanced stead-state free precession imaging to calculate left and right ventricular volumes, left ventricular ejection fraction (LVEF), and myocardial mass. Intravenous gadolinium contrast

(gadobutrol, Gadavist®, Bayer Healthcare Pharmaceuticals, Wayne, NJ, USA at a dose of 0.15 mmol/kg) was administered through a peripheral intravenous line. Late gadolinium enhancement (LGE) was performed using segmented inversion recovery (optimized inversion time to null myocardium) and single shot phase sensitive inversion recovery (inversion time of 300ms) imaging in standard long-axis planes and a short-axis stack. Native T₁ mapping, T₂ mapping, and post-contrast (15 minutes after contrast administration) T₁ mapping was performed. T₁ mapping was performed using a modified Look-Locker inversion recovery (MOLLI) sequence acquired as using 5(3s)3 protocol before contrast and 4(1)3(1)2 protocol after contrast (see supplementary material for more details).

CMR post-processing

CMR post-processing was performed blinded to clinical data. Ventricular volumes and function were calculated using Medis QMass (MedisSuite 2.1, Medis, Leiden, The Netherlands). The presence or absence of LGE, as well as location using the standard 17-segment model,(12) was qualitatively assessed by two cardiologists with over 10 years of experience reading CMR. If there was disagreement, a third cardiologist assessed for LGE.

T₁ maps were obtained prior to and after contrast administration as described by Messroghli et al.(13) Regions of interest (ROIs) were manually drawn on T₁, T₂, and ECV maps within the LV mesocardium, carefully avoiding partial volume averaging with blood-pool or epicardial fat and artifact. As per our lab protocol, ROIs were placed in the septum and free wall of the basal and mid short-axis slices, as well as in areas with focal abnormalities identified after visual inspection. Areas of LGE determined not to be due to myocardial infarction were included in the

analysis, as these were felt to be the most focal areas in a continuum of diffuse ECM expansion.(14)

Statistical analysis

Categorical variables were compared using the chi squared test and presented as frequency and percentage. Continuous variables were compared using the Wilcoxon rank sum and presented as median and interquartile range (IQR). For statistical comparisons with reported reference ranges (ECV), a Student t-test was used to compare the mean, standard deviation, and sample size of published values to those of our patient population. Statistical analysis was performed using STATA, version 15 (StatCorp LLC, College Station, TX) software. All tests were 2-sided and a p-value < 0.05 was considered significant. The study was approved by the institutional review board at Vanderbilt University Medical Center.

RESULTS

Twenty-two competitive athletes with COVID-19 (COVID-19+ athletes) and 44 controls (22 healthy controls and 22 tactical athletes) were included. Tactical athletic controls were more likely to be older age, male gender, and have larger body surface areas (BSAs) compared to COVID-19+ athletes. The COVID-19+ athletes represented 8 different collegiate sports: lacrosse (1), swimming (1), tennis (2), football (2), baseball (2), basketball (3), golf (3), and soccer (8). The COVID-19+ athlete group was 59% female and 25% non-white, with a median age of 20 years. The majority of COVID-19+ athletes experienced mild illness (N=17, 77%), while 23% were asymptomatic and diagnosed by routine screening. The median time from SARS-CoV-2 infection to CMR was 52 days.

ECG, cardiac biomarker, and echocardiography findings

Twenty (91%) of COVID-19+ athletes had a screening ECG and 18 (82%) had a troponin I collected and all were within normal limits (troponin I < 99% for age). All additional cardiac biomarkers (brain natriuretic peptide in 3 and high-sensitivity c-reactive protein in 2) were within the normal range. Echocardiography was performed in 21 COVID-19+ athletes and strain imaging was completed in 16. The median LVEF was 59% and the median global longitudinal strain was within the normal range at -18.2% (**Table 1**).

CMR volumetric and functional comparisons

Cardiac volumes and function were compared among groups (**Table 1**). The left ventricular ejection fraction (LVEF) and volumetrics were normal and similar across groups, except for reduced LV end diastolic volume index (LVEDVi) among tactical athletic controls (84 ml/m²) compared to healthy controls (95 ml/m²) and COVID-19+ athletes (94 ml/m²). Healthy controls had a significantly lower LV mass index (42 g/m²) compared to COVID-19+ athletes (64 g/m²) and tactical athletic controls (65 g/m²). The right ventricular ejection fraction was significantly lower in COVID-19+ athletes (52%) compared to healthy controls (57%) and tactical athletic controls (56%). COVID-19+ athletes also had increased RV volumes relative to healthy controls and tactical athletes (**Table 1**).

CMR parametric mapping and scar imaging

There was no difference in native T₁ mapping among groups at any of the four ROIs (**Table 2**). T₂ times were elevated in COVID-19+ patients compared to healthy controls (46.4 vs. 44.6 ms).

Mid septal ECV was higher among COVID-19+ athletes (25.3, SD \pm 2.6) as compared to reference values for both athletic controls (22.5, SD \pm 3) and healthy controls (24.0, SD \pm 3), though the latter did not reach statistical significance.

Two COVID-19+ athletes had normal ECG, troponin I, and echocardiography with strain imaging (global longitudinal strain $<$ -20 for both), but abnormal CMRs with inferoseptal LGE. One subject was diagnosed with acute pericarditis based on clinical symptoms (exertional chest tightness) after CMR demonstrated a pericardial effusion, pericardial LGE, and intramural LGE of the inferoseptum (**Figure 1**). The second subject was asymptomatic with undetectable troponin I, minor T wave abnormalities considered acceptable in trained athletes (and similar to priors), and normal echocardiogram with strain (LVEF $>$ 65%, GLS -20.2). CMR showed mildly reduced biventricular systolic function (LVEF 50%, RVEF 46%) and acute myocarditis of the basal inferoseptum based on modified Lake Louise criteria.⁽¹⁵⁾ While the septal and lateral wall ROIs in the patient with myocarditis were normal, ROIs in the area of LGE demonstrated elevations in all parameters (Native T₁ 1184 ms, T₂ 78.2 ms, ECV 39.2%; **Figure 1**). **Table 3** demonstrates comparison between COVID-19+ athletes with abnormal and normal CMRs.

Additionally, one COVID-19+ athlete had abnormal LVEF ($<$ 55%) and 4-chamber enlargement consistent with athlete's heart. When compared with our laboratory's normal values for parametric mapping, 10 COVID-19+ athletes (45%) with otherwise normal CMR exams had mild segmental elevations (**Table 4**), particularly of T₂ times. Of note, three (13.6%) healthy controls and five (23%) tactical athletes also had mild segmental parametric mapping elevations.

Table 1. Baseline characteristics.

	COVID-19+ Collegiate athletes (N=22)	Healthy controls (N =22)	P value	Tactical athletic controls (N=22)	P value
Age, median (IQR), years	20 (19, 21)	30 (27, 32)	<0.001	31 (28, 35)	<0.001
Height (cm)	174 (168, 185)	173 (164, 183)	0.28	180 (170, 188)	0.57
Weight (kg)	76 (61, 86)	73 (70, 95)	0.65	93 (74, 107)	0.01
Body surface area (kg/m ²)	1.9 (1.7, 2.1)	1.9 (1.8, 2.2)	0.85	2.2 (1.9, 2.3)	0.02
Race (Non-White, N, (%))	4 ^a (25%)	5 ^b (23%)	0.87	NA	
Ethnicity (Non-Hispanic, N, (%))	14 ^d (100%)	2 ^c (100%)	0.23	NA	
Gender (Female – N, (%))	13 (59%)	8 (36%)	0.13	3 (14%)	0.002
Echocardiography					
LVEF, %	59 (56, 63) ^a	NA		NA	
GLS, %	-18.2 (-19.7, -15.6) ^a	NA		NA	
CMR					
LVEF, median (IQR), %	60 (59, 63)	60 (57, 64)	0.89	61 (57, 64)	0.80
LVEDV, mL	180 (153, 208)	166 (143, 211)	0.58	188 (157, 207)	0.83
LVEDVi (mL/m ²)	94 (89, 102)	95 (79, 100)	0.17	84 (73, 98)	0.02
LVESV, mL	69 (63, 77)	67 (56, 83)	0.55	74 (60, 86)	0.94
LVESVi (mL/m ²)	37 (35, 43)	37 (31, 42)	0.52	35 (28, 41)	0.21
LV mass, g	115 (101, 151)	76 (63, 96)	<0.001	140 (120, 155)	0.11
LV mass index (g/ m ²)	64 (56, 71)	42 (33, 48)	<0.001	65 (59, 73)	0.92
RVEF, %	52 (50, 54)	57 (55, 60)	<0.001	56 (51, 59)	0.01
RVEDV, mL	204 (163, 224)	178 (143, 225)	0.13	181 (169, 226)	0.42
RVEDVi (mL/m ²)	105 (97, 114)	95 (80, 106)	0.01	88 (76, 106)	0.01
RVESV, mL	100 (78, 109)	72 (61, 90)	<0.001	85 (69, 108)	0.13
RVESVi (mL/m ²)	50 (46, 55)	40 (33, 45)	<0.001	43 (31, 51)	<0.01

^aN=16, ^bN=22, ^cN=4, ^dN=14, ^eN=2, ^fN=1, NA=not available

Table 2. CMR parametric mapping and LGE comparison.

	COVID-19+ Collegiate athletes (N=22)	Healthy controls (N =22)	P value	Tactical athletic controls (N=22)	P value
T₁ (global), median (IQR), ms					
Basal septum	995 (969, 1006)	986 (971, 999)	0.31	990 (964, 1024)	0.89
Basal lateral	971 (951, 984)	958 (945, 983)	0.53	975 (962, 1011)	0.17
Mid septum	982 (973, 997)	978 (963, 998)	0.62	989 (963, 1008)	0.22
Mid lateral	980 (947, 988)	965 (946, 975)	0.20	968 (944, 1000)	0.93
T₂ (global), ms					
Basal septum	44.3 (42.3, 46.1)	42.4 (41.5, 43.3)	0.009	*	
Basal lateral	45.4 (43.2, 46.6)	44.0 (43.0, 44.6)	0.034	*	
Mid septum	46.4 (45.2, 48.2)	44.6 (43.2, 45.4)	0.004	*	
Mid lateral	47.0 (45.2, 48.2)	44.0 (42.6, 45.4)	0.003	*	
ECV (global), %					
Basal septum	24.0 (22.7, 25.9)				
Basal lateral	21.6 (20.6, 23.8)				
Mid septum	25.4 (22.7, 27.3) 25.3 ± 2.6 (SD)	24 (SD ± 3) ^b	0.11	22.5 ± 2.6 (SD) ^c	<0.001 [†]
Mid lateral	23.3 (21.4, 25.0)				
LGE (Any), N (%)	2 (9 %)	0		0	
Myocardial	2 (9 %)	0		0	
Pericardial	1 (5 %)	0		0	

4 ROIs in the left ventricle from short axis views were obtained for native T₁, T₂, and ECV. Healthy controls underwent CMR without contrast and therefore do not have ECV or LGE assessments. *Insufficient T₂ mapping was performed on tactical athletes for comparison. ECV reference normal for healthy controls (^b) and athletic controls (^c) were derived from published literature, respectively.(9,10) [†]Student t-test used for analysis.

Table 3. Comparison of COVID-19 positive collegiate athletes with and without cardiovascular involvement on CMR.

	COVID-19+ Collegiate athletes with myocardial pathology (N =2)	COVID-19+ Collegiate athletes without myocardial pathology (N=20)	P value
Age, median (IQR), years	20 (19, 21)	20 (20, 21)	0.77
Height (cm)	168 (163, 173)	177 (168, 188)	0.25
Weight (kg)	57 (48, 66)	78 (62, 87)	0.17
Body surface area (kg/m ²)	1.6 (1.5, 1.8)	1.9 (1.7, 2.1)	0.17
Gender (Female – N, (%))	2 (100%)	11 (55%)	0.217
CMR			
LVEF, median (IQR), %	55 (51, 60)	61 (59, 63)	0.21
LVEDV (mL)	158 (136, 179)	182 (156, 210)	0.25
LVEDVi (mL/m ²)	97 (93, 101)	94 (89, 103)	0.73
LVESV (mL)	69 (67, 72)	70 (62, 79)	1.00
LVESVi (mL/m ²)	43 (41, 46)	36 (34, 42)	0.17
LV mass (g)	96 (79, 112)	118 (102, 154)	0.14
LV mass index (g/ m ²)	59 (54, 63)	66 (56, 72)	0.25
RVEF (%)	48 (46, 50)	52 (51, 54)	0.04
RVEDV (mL)	169 (136, 202)	212 (172, 228)	0.21
RVEDVi (mL/m ²)	102 (91, 114)	105 (98, 117)	0.57
RVESV (mL)	87 (73, 101)	101 (79, 110)	0.36
RVESVi (mL/m ²)	53 (49, 57)	50 (46, 55)	0.57
T ₁ , ms			
Basal septum	997 (988, 1007)	995 (968, 1005)	0.65
Inferoseptal ROI	1184 ^a	n/a	
T ₂ , ms			
Basal septum	44.3 (44.0, 44.6)	44.3 (42.3, 46.7)	0.95
Inferoseptal ROI	78.2 ^a		
ECV, %			
Basal septum	24.3 (22.5, 26)	24.0 (22.9, 25.8) ^b	0.95
Inferoseptal ROI	39.2 ^a	n/a	

^aN=1 (myocarditis case), ^bN=20

Table 4. Abnormal CMR parameters among COVID-19+ athletes.

CMR parameter	Number Abnormal (%)	Highest/Lowest Value
LVEF	2 (9%)	50%
RVEF	1 (4.5%)	46%
LGE yes/no	2 (9%)	N/A
T₁ (global), ms		
Basal septum	1 (4.5%)	1042ms
Basal lateral	0	1018ms
Mid septum	1 (4.5%)	1051ms
Mid lateral	0	1032ms
T₂ (global), ms		
Basal septum	3 (13.5%)	48.9ms
Basal lateral	2 (9%)	49.5ms
Mid septum	3 (13.5%)	53.9ms
Mid lateral	2 (9%)	50.5ms
ECV (global), %		
Basal septum	1 (4.5%)	28.6%
Basal lateral	0	25.8%
Mid septum	1 (4.5%)	30.3%
Mid lateral	2 (9%)	31.2%

DISCUSSION

There is a paucity of data regarding the cardiac sequelae of SARS-CoV-2 infection among athletes. This study of collegiate athletes demonstrated that the prevalence of myocardial inflammation or fibrosis after an asymptomatic or mild course of ambulatory COVID-19 is modest (9%). However, it also highlights that screening programs with less intensive cardiovascular phenotyping(16) are likely to underdiagnose myopericardial inflammation, as both COVID-19+ athletes with LGE on CMR had reassuring ECG, troponin I, and echocardiography with strain. In our cohort, using echocardiography cut-offs of LVEF < 55% and global longitudinal strain > -17% would have resulted in four false positives and a 0% positive predictive value for myopericarditis.

Many of the volumetric and parametric mapping changes seen between COVID-19+ athletes and healthy controls were less pronounced when compared to a group of tactical athletic controls (**Table 1**). T₂ relaxation times (46.4 vs. 44.6 ms) were elevated among COVID-19+ athletes relative to healthy controls. No comparison could be made to tactical athletes, as they did not have clinical indication for T₂ mapping. The limited literature on T₂ mapping among athletes suggests values are slightly elevated compared to controls.(17,18) These findings highlight many of the known cardiac volumetric and functional changes associated with athleticism and emphasize the need for using athletic case-controls in future studies of COVID-19+ athletes.(11)

Forty-five percent of COVID-19+ athletes had mild segmental abnormalities on parametric mapping (**Table 4**). However, given the large number of segments evaluated, and similar abnormalities seen in the control groups, much of these differences may be explained by random

chance. These abnormalities in isolation are of uncertain significance and in the authors' opinion do not merit suspension of return to competition. However, even in the absence of symptoms of other screening abnormalities (ECG, troponin I, echocardiography with strain), 9% of COVID-19+ athletes had LGE, which has repeatedly been shown to predict mortality among patients with cardiovascular disease, including myocarditis, and should result in suspension of competition.(19,20) The ECV was found to be higher among COVID-19+ athletes (25.4%) compared to tactical athletic controls (22.5%) and healthy controls (24.0%), though the latter did not reach statistical significance. Due to myocyte hypertrophy, the ECV in athletes inversely correlates with the level of training.(10,11) Thus, this finding suggests a residual expansion of the extracellular space following COVID-19 infection. However, without pathological specimens, definitive analysis of these tissue-level changes cannot be definitively determined.

Cardiac involvement by COVID-19 is known to occur both in the acute and early convalescent phases and may result from direct viral-mediated cardiomyocyte injury, innate inflammatory reaction to infection, or a delayed, dysregulated immune response to COVID-19 (as seen in MIS-C).(21,22) Among symptomatic, hospitalized patients with COVID-19, CMR revealed myocardial edema in over half, and LGE in nearly one-third of all patients.(23) The largest cohort of COVID-19+ patients assessed by CMR consisted of 100 patients, one-third of whom required hospitalization, while the remainder recovered at home.(4) In that study, 78% of patients had an abnormal finding on CMR. The most common abnormality was persistent elevation of the native T_1 and T_2 relaxation times (occurring in 73% and 60% of patients, respectively).

There are many plausible explanations for the differences between the findings of that study and our cohort. First, our population was younger (median age 20 vs. 49 years old) and healthier with fewer cardiac risk factors at baseline. Second, there is a programmatic effort at our university for screening of student-athletes, and all that tested positive for COVID-19 are mandated to undergo CMR prior to returning to play, regardless of the severity of illness or symptoms. In the observational cohort in Germany, patients were referred for CMR on the clinical judgment of their physician, creating a selection bias. For example, their subjects were much more likely to have cardiac biomarker evidence of myocardial damage whereas no subjects in our cohort had elevated troponin. Thus, the German cohort represented a less healthy population who suffered a higher severity of illness. Another important difference between the two studies is that the median duration from illness to CMR in our study was only 52 days compared to 71 days in their study. This shorter duration between illness and CMR would be expected to increase the sensitivity of CMR for the detection of residual inflammation or fibrosis in our cohort. However, as noted above, our cohort had only a modest incidence of abnormalities on CMR.

It should be noted that this study began prior to the return of all students to campus. It is quite likely that cases will increase as students congregate again on campus, despite all reasonable measures to maintain social distancing. As new cases arise and screening continues, the duration between illness and CMR will naturally decrease, and thus the incidence of residual inflammation or LGE on CMR may increase. This may have a direct effect on athlete eligibility. Finally, all patients in the present study were asymptomatic or mildly symptomatic from their COVID-19 illness. Those with normal CMRs have been cleared for graded, progressive return to sport with ongoing monitoring for symptoms. The two athletes who tested positive are being

withheld from training, as per the published guidelines. The degree of cardiac involvement from moderate-severe courses of COVID-19 among competitive athletes remains unknown.

Limitations

There are inherent limitations of the retrospective design of this study. First, clinical outcomes among the collegiate athletes with and without CMR findings are not yet available. While COVID-19+ athletes were mandated to have laboratory, electrocardiographic, echocardiographic, and CMR imaging performed prior to return to sports participation, CMR was prioritized and some of this testing is incomplete at the current time. Baseline athletic performance phenotyping (quantification of baseline aerobic and strength training activities per week, peak VO₂ with cardiopulmonary exercise testing, etc.) was not studied. While our cohorts' diversity of sports and size limits our ability to determine if the type or aerobic intensity of sport affects the implications of the cardiovascular sequelae following COVID-19 infection, CMR volumetrics of our cohort point towards athlete's heart (increased LV mass and increased four-chamber volumes), which has generalizability to many US competitive athletes. Our study did not enroll children < 18 years old, and therefore caution should be taken with generalization of these results to that age group.

CONCLUSIONS

Our study suggests that the prevalence of myocardial inflammation or fibrosis after an asymptomatic or mild course of ambulatory COVID-19 among competitive athletes is modest (9%), but would be missed by ECG, T_i, and strain echocardiography. However, the burden of cardiovascular sequelae is still significant among this healthy cohort with minimal COVID-19

symptomatology, and the prevalence of myocardial involvement may be higher among those with more severe infections. Ongoing investigation is necessary to further phenotype the cardiovascular manifestations of COVID-19 in all phases of infection, and to study the potential clinical outcomes ranging from limitations in athletic performance to arrhythmia, heart failure, and sudden cardiac death in athletes and the general population. Additionally, the sensitivity of conventional screening with electrocardiography, cardiac biomarkers, and echocardiography needs to be compared to CMR in larger cohorts of competitive athletes to better understand the ideal screening mechanism to guide safe return to competition.

PERSPECTIVES

Competency in Patient care and medical knowledge

Cardiovascular sequelae of COVID-19 asymptomatic or mild illness among competitive athletes is lower than expected, but still nearly 10% and can present without associated symptoms.

Translational Outlook

The sensitivity of current screening methods of electrocardiography, cardiac biomarkers, and echocardiography needs to be compared to CMR in larger cohorts of competitive athletes to better understand the ideal screening mechanism for return to competition.

ACKNOWLEDGEMENTS

The authors would like to acknowledge our exceptional cardiac magnetic resonance technologists (Shannon Bozeman, Dana Fuhs, and Matt Herscher) for obtaining phenomenal imaging and working over-time for the screening of these athletes.

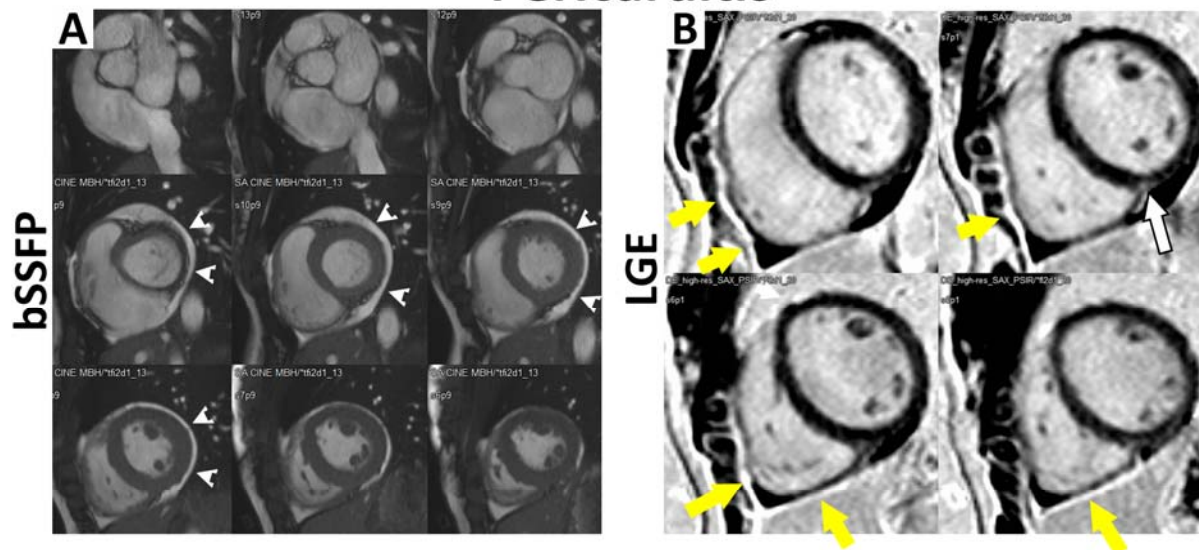
REFERENCES

1. Dong E, Du H, Gardner L. An interactive web-based dashboard to track COVID-19 in real time. *Lancet Infect Dis* 2020;20:533-534.
2. Driggin E, Madhavan MV, Bikdeli B et al. Cardiovascular Considerations for Patients, Health Care Workers, and Health Systems During the COVID-19 Pandemic. *J Am Coll Cardiol* 2020;75:2352-2371.
3. Dweck MR, Bularga A, Hahn RT et al. Global evaluation of echocardiography in patients with COVID-19. *Eur Heart J Cardiovasc Imaging* 2020.
4. Puntmann VO, Carerj ML, Wieters I et al. Outcomes of Cardiovascular Magnetic Resonance Imaging in Patients Recently Recovered From Coronavirus Disease 2019 (COVID-19). *JAMA Cardiol* 2020.
5. Eckart RE, Scoville SL, Campbell CL et al. Sudden death in young adults: a 25-year review of autopsies in military recruits. *Ann Intern Med* 2004;141:829-34.
6. Maron BJ, Doerer JJ, Haas TS, Tierney DM, Mueller FO. Sudden deaths in young competitive athletes: analysis of 1866 deaths in the United States, 1980-2006. *Circulation* 2009;119:1085-92.
7. Maron BJ, Udelson JE, Bonow RO et al. Eligibility and Disqualification Recommendations for Competitive Athletes With Cardiovascular Abnormalities: Task Force 3: Hypertrophic Cardiomyopathy, Arrhythmogenic Right Ventricular Cardiomyopathy and Other Cardiomyopathies, and Myocarditis: A Scientific Statement From the American Heart Association and American College of Cardiology. *Circulation* 2015;132:e273-80.
8. Harris PA, Taylor R, Thielke R, Payne J, Gonzalez N, Conde JG. Research electronic data capture (REDCap)--a metadata-driven methodology and workflow process for providing translational research informatics support. *J Biomed Inform* 2009;42:377-81.
9. Dabir D, Child N, Kalra A et al. Reference values for healthy human myocardium using a T1 mapping methodology: results from the International T1 Multicenter cardiovascular magnetic resonance study. *J Cardiovasc Magn Reson* 2014;16:69.
10. McDiarmid AK, Swoboda PP, Erhayiem B et al. Athletic Cardiac Adaptation in Males Is a Consequence of Elevated Myocyte Mass. *Circ Cardiovasc Imaging* 2016;9:e003579.
11. Gati S, Sharma S, Pennell D. The Role of Cardiovascular Magnetic Resonance Imaging in the Assessment of Highly Trained Athletes. *JACC Cardiovasc Imaging* 2018;11:247-259.
12. Cerqueira MD, Weissman NJ, Dilsizian V et al. Standardized myocardial segmentation and nomenclature for tomographic imaging of the heart: a statement for healthcare professionals from the Cardiac Imaging Committee of the Council on Clinical Cardiology of the American Heart Association. *J Nucl Cardiol* 2002;9:240-5.
13. Messroghli DR, Radjenovic A, Kozerke S, Higgins DM, Sivananthan MU, Ridgway JP. Modified Look-Locker inversion recovery (MOLLI) for high-resolution T1 mapping of the heart. *Magn Reson Med* 2004;52:141-6.
14. Moon JC, Messroghli DR, Kellman P et al. Myocardial T1 mapping and extracellular volume quantification: a Society for Cardiovascular Magnetic Resonance (SCMR) and CMR Working Group of the European Society of Cardiology consensus statement. *J Cardiovasc Magn Reson* 2013;15:92.

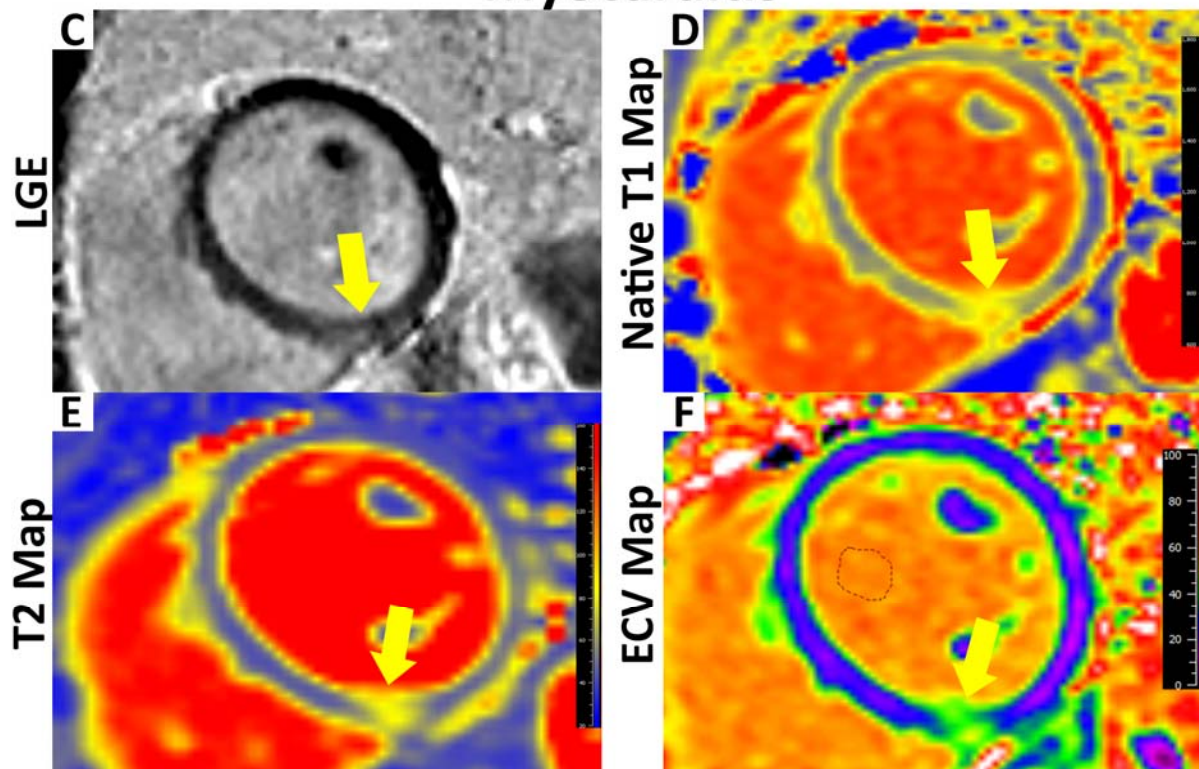
15. Ferreira VM, Schulz-Menger J, Holmvang G et al. Cardiovascular Magnetic Resonance in Nonischemic Myocardial Inflammation: Expert Recommendations. *J Am Coll Cardiol* 2018;72:3158-3176.
16. Phelan D, Kim JH, Chung EH. A Game Plan for the Resumption of Sport and Exercise After Coronavirus Disease 2019 (COVID-19) Infection. *JAMA Cardiol* 2020.
17. Mordil I, Carrick D, Bezerra H, Tzemos N. T1 and T2 mapping for early diagnosis of dilated non-ischaemic cardiomyopathy in middle-aged patients and differentiation from normal physiological adaptation. *Eur Heart J Cardiovasc Imaging* 2016;17:797-803.
18. Malek LA, Barczuk-Falecka M, Werys K et al. Cardiovascular magnetic resonance with parametric mapping in long-term ultra-marathon runners. *Eur J Radiol* 2019;117:89-94.
19. Grani C, Eichhorn C, Biere L et al. Prognostic Value of Cardiac Magnetic Resonance Tissue Characterization in Risk Stratifying Patients With Suspected Myocarditis. *J Am Coll Cardiol* 2017;70:1964-1976.
20. Grun S, Schumm J, Greulich S et al. Long-term follow-up of biopsy-proven viral myocarditis: predictors of mortality and incomplete recovery. *J Am Coll Cardiol* 2012;59:1604-15.
21. Feldstein LR, Rose EB, Horwitz SM et al. Multisystem Inflammatory Syndrome in U.S. Children and Adolescents. *N Engl J Med* 2020;383:334-346.
22. Most ZM, Hendren N, Drazner MH, Perl TM. The Striking Similarities of Multisystem Inflammatory Syndrome in Children and a Myocarditis-like Syndrome in Adults: Overlapping Manifestations of COVID-19. *Circulation* 2020.
23. Huang L, Zhao P, Tang D et al. Cardiac Involvement in Patients Recovered From COVID-2019 Identified Using Magnetic Resonance Imaging. *JACC Cardiovasc Imaging* 2020.

Central Illustration: Abnormal CMR in COVID-19+ athletes

Pericarditis



Myocarditis



A: Short axis stack with circumferential pericardial effusion (white arrowheads). B: Short axis stack late gadolinium enhancement phase-sensitive inversion recovery (PSIR) image with parietal pericardial LGE (yellow arrows) and basal inferoseptal LGE (white arrow). C: Short axis PSIR with basal inferoseptal LGE (yellow arrow). D: Basal native T₁, E: T₂, and F: ECV maps

with inferoseptal regional elevation in relaxation times. ROI in the areas of elevation demonstrated Native T_1 1184 ms, T_2 78.2 ms, ECV 39.2%.