

1 **Use of Metabolomic Profiling to Understand Variability in Adiposity Changes Following an**  
2 **Intentional Weight Loss Intervention in Older Adults**

3 (Authors currently in alphabetical order except first and last): Ellen E. Quillen, PhD<sup>1</sup>, Daniel P.  
4 Beavers, PhD<sup>2</sup>, Anderson O'Brien Cox, BS<sup>3</sup>, Cristina M. Furdui, PhD<sup>1,3</sup>, Jingyun Lee, PhD<sup>1,3</sup>,  
5 Ryan M. Miller, PhD<sup>4</sup>, Hanzhi Wu, PhD<sup>1,3</sup>, and Kristen M. Beavers, PhD<sup>5</sup>

6 <sup>1</sup> Internal Medicine, Section on Molecular Medicine, Wake Forest School of Medicine,  
7 Winston-Salem, NC

8 <sup>2</sup> Biostatistics and Data Science, Wake Forest School of Medicine, Winston-Salem, NC

9 <sup>3</sup> Proteomics and Metabolomics Shared Resource, Comprehensive Cancer Center, Wake Forest  
10 School of Medicine, Winston-Salem, NC

11 <sup>4</sup> Internal Medicine, Section on Gerontology and Geriatric Medicine, Wake Forest School of  
12 Medicine, Winston-Salem, NC

13 <sup>5</sup> Health and Exercise Science, Wake Forest University, Winston-Salem, NC

14

15 **Abbreviated Title:** Metabolomics and Body Composition

16 **Corresponding author:** Kristen M. Beavers  
17 Wake Forest University  
18 Winston-Salem, NC 27106  
19 Ph: 336-758-5855  
20 Email: beaverkm@wfu.edu

21

22 **ABSTRACT** (~200 words)

23 Introduction: Inter-individual response to dietary interventions remains a major challenge to  
24 successful weight loss among older adults. This study applied metabolomics technology to  
25 identify small molecule signatures associated with loss of fat mass and overall weight in a cohort  
26 of older adults on a nutritionally complete, high protein diet.

27 Methods: 102 unique metabolites were measured using LC-MS for 38 adults aged 65-80  
28 years randomized to dietary intervention and 36 controls. Metabolite values were analyzed in  
29 both baseline plasma samples and samples collected following the six-month dietary intervention  
30 to consider both metabolites that could predict response to diet and those that changed in  
31 response to diet or weight loss.

32 Results: Eight metabolites changed over intervention at a nominally-significant level: D-  
33 pantothenic acid, L-methionine, nicotinate, aniline, melatonin, deoxycarnitine, 6-deoxy-L-  
34 galactose, and 10-hydroxydecanoate. Within the intervention group, there was broad variation in  
35 achieved weight-loss and DXA-defined changes in total fat and visceral adipose tissue (VAT)  
36 mass. Change in VAT mass was significantly associated with baseline abundance of  $\alpha$ -  
37 aminoadipate ( $p = 0.0007$ ) and an additional mass spectrometry peak that may represent D-  
38 fructose, myo-inositol, mannose,  $\alpha$ -D-glucose, allose, D-galactose, D-tagatose, or L-sorbose ( $p$   
39 = 0.0001).

40 Discussion: This hypothesis-generating study reflects the potential of metabolomic  
41 biomarkers for the development of personalized dietary interventions.

42 **Keywords:** metabolomics, weight loss, body composition, aging, heterogeneity

43

## 44 INTRODUCTION

45 The prevalence of obesity and its detrimental health effects are increasing rapidly among  
46 older adults.<sup>1,2</sup> Medical complications associated with excess fat mass highlight the need to treat  
47 obesity in this age group;<sup>3</sup> yet, recommendation for intentional weight loss remains  
48 controversial.<sup>4,5</sup> Reluctance stems, at least in part, from loss of lean mass known to accompany  
49 overall weight loss (10-50% of total tissue<sup>6,7</sup>), and potential exacerbation of age-related disability  
50 risk. Encouragingly, data from randomized controlled trials (RCTs) support immediate muscle  
51 strength and function gains among older adults following lifestyle-based weight loss –  
52 particularly when structured exercise is included as an intervention component – despite lean  
53 mass loss.<sup>8,9</sup>

54 Accordingly, current geriatric obesity treatment guidelines encourage weight loss  
55 therapies that minimize lean, while maximizing fat, mass loss for older adults with obesity.<sup>10</sup>  
56 Change in body composition with caloric restriction-induced weight loss appears modifiable  
57 through diet, with the amount of dietary protein consumed during caloric restriction identified as  
58 a key determinant in lean mass preservation.<sup>11</sup> Indeed, meta-analytic data show older adults who  
59 consume higher levels of protein during weight loss retain more lean mass in comparison with  
60 normal protein diets (losses of 21%–22% vs  $\geq 30\%$ ).<sup>12</sup> In agreement, data from our group show  
61 older adults following a hypocaloric, nutritionally complete, higher protein meal plan experience  
62 smaller average lean (~13%) versus fat (~87%) mass losses; however, the amount and location of  
63 fat mass loss was noted to be more variable.<sup>13,14</sup> Better understanding of the variability in  
64 adiposity changes as a means to optimize fat mass loss in this context confers high clinical  
65 utility.

66 Metabolites (i.e., small molecules including sugars, amino acids, and vitamins which are  
67 both reactants and products of metabolic processes in the body) are particularly attractive  
68 biomarkers for understanding variability in response to dietary interventions. Metabolites can be  
69 collected from blood, urine, or other biofluid and are sensitive reflections of both intrinsic and  
70 extrinsic changes in nutrition and metabolism.<sup>15,16</sup> Prior studies have shown that baseline  
71 metabolomic profiles are associated with body composition responsiveness<sup>17,18</sup> and that select  
72 metabolites, including branch chain amino acids, may change following a weight loss  
73 intervention.<sup>15</sup> Herein we sought to identify plasma metabolites associated with changes in total  
74 and visceral fat mass among older adults following a hypocaloric, nutritionally complete, higher  
75 protein meal plan. Although primarily meant to be hypothesis generating, these results may serve  
76 as preliminary data to design targeted dietary interventions for fat loss among older adults.

77

## 78 **METHODS**

### 79 *Study and Participant Descriptions*

80 This analysis utilizes data from The Medifast® for Seniors Study (NCT02730988), a six  
81 month RCT conducted at Wake Forest University (recruiting from September 18, 2015 to  
82 September 14, 2016), designed to compare the effects of weight loss (WL), achieved by  
83 following a hypocaloric, nutritionally complete, higher protein meal plan, versus weight stability  
84 (WS) on mobility and body composition in 96 older adults (54-79 years) with obesity (30-40  
85 kg/m<sup>2</sup>). Primary outcome papers, including study design and dietary details, were previously  
86 published.<sup>13,14,19,20</sup> For the present analyses, we evaluated metabolomic data from plasma

87 samples drawn at baseline and at the end of the six-month dietary intervention for 74 individuals  
88 with complete DXA-derived body composition data.

### 89 *Metabolite Extraction*

90 Metabolites were extracted from 50  $\mu$ L of plasma spiked with 10  $\mu$ L of internal standard,  
91 2-(N-morpholino) ethanesulfonic acid (MES) solution using a standard extraction method of four  
92 volumes of cold methanol and incubation on ice for 30 minutes. After centrifugation at 18,000 x  
93 g for five minutes, the supernatant was dried under vacuum and reconstituted in ultrapure water  
94 for liquid chromatography-mass spectrometry (LC-MS) analysis.

### 95 *Broad Metabolomics Data Generation and Processing*

96 The LC-MS consisted of a Q Exactive HF hybrid quadrupole-Orbitrap mass spectrometer  
97 (Thermo Scientific) and a Vanquish UHPLC system (Thermo Scientific). To identify a broader  
98 range of metabolites, samples were analyzed on two different columns, a Hypersil GOLD  
99 pentafluorophenyl (PFP) column and an Accucore Vanquish C18+ column. A linear gradient  
100 was employed for chromatographic separation using 100% water (mobile phase A) and 90%  
101 acetonitrile (mobile phase B) both of which contained 0.1% formic acid and 10mM ammonium  
102 formate. Data was acquired by collecting full mass spectra (MS1) using polarity switching  
103 (positive/negative) at a resolution of 150K. Unnormalized metabolite data files are available at  
104 NIH Common Fund's National Metabolomics Data Repository  
105 <https://www.metabolomicsworkbench.org>).

106 MS peaks were extracted and integrated within the MSMLS Discovery software (IROA  
107 Technologies) in combination with customized compound libraries prepared using a Mass  
108 Spectrometry Metabolite Library (Sigma-Aldrich). To eliminate redundancy in compound

109 identification, the most abundant ion in each peak was selected and peak area was then  
110 normalized to the total ion current (TIC) for relative quantification. We quantile normalized and  
111 log transformed the data to reduce the bias caused by a small number of highly abundant  
112 metabolites.<sup>21</sup> Because missing data from a mass spectrometer is not generally representative of a  
113 true zero where values are present for other samples, we replaced missing values with half of the  
114 minimum detected value in the full data set.

### 115 *Body Weight, Composition, and Fat-Distribution*

116         Body weight and composition were measured at baseline and six months. Baseline  
117 weight was measured to the 10th decimal without shoes and outer garments using a calibrated  
118 scale (Detecto 758C Weight Indicator; Webb City, MO). Height was obtained without shoes to  
119 within 0.25 inches using a QuickMedical 235D Heightronic Digital Stadiometer (Issaquah, WA).  
120 Dual-energy x-ray absorptiometry (DXA) scans were used to determine total body, lean, and fat  
121 masses, with visceral adipose tissue (VAT) derived using the CoreScan algorithm (GE Medical  
122 Systems, Madison, WI, USA).<sup>22</sup> All scans were performed on the same machine and by the same  
123 technician, following manufacturer recommendations for patient preparation and positioning.  
124 Coefficients of variation from repeated measurements at our institution are <1.0% for total body,  
125 lean, and fat masses.

### 126 *Statistical Analyses*

127         For participants with complete DXA data (n=74), baseline metabolomic data was  
128 evaluated using principal components analysis to identify stratification associated with  
129 randomization assignment, age, gender, race, or technical artifacts (i.e., LC-MS run order).

130 Demographic characteristics, including age, gender, and race were assessed by participant report  
131 at baseline.

132 For 102 unique MS peaks, mean differences in the WL and WS groups were evaluated  
133 using Welch's t-tests to account for differences in variance. Within the WL group (n=38), we  
134 evaluated differences in loss of total weight, total fat mass, and VAT mass associated with either  
135 metabolite abundance at baseline or change in metabolite abundance over the six-month  
136 intervention using linear regression.

137 We also considered percent change in weight and body composition to account for  
138 baseline differences. Change in weight, total fat mass, and VAT mass all showed substantial but  
139 non-significant differences between men and women at baseline, so we considered both models  
140 containing all participants and gender-stratified models. Males were 23.5 kg heavier on average  
141 with 3.6 kg more total fat mass and 1.9 kg more VAT mass. The relationship of demographic  
142 variables with individual metabolites and principal components of metabolomic variation were  
143 tested and found to be non-significant except with regard to gender. Based on this, age and race  
144 were not incorporated into subsequent models. We undertook these analyses solely in the WL  
145 group because the diet provided to this group was expected to cause broad shifts in the nutrient  
146 profile irrespective of weight loss that could confound associations if the WS group was  
147 included. All analyses were performed in R (R Foundation for Statistical Computing, Vienna,  
148 Austria).<sup>23</sup> Throughout, MS peaks were considered independent of one another so multiple  
149 testing is addressed through the use of Bonferroni corrected critical *p*-values.

150

151 **RESULTS**

152 *Intervention Related Changes in Body Composition and Sample Characteristics*

153 Demographic and body composition data for the subset of individuals with complete  
154 metabolomics and body composition data are presented in **Table 1**. Overall, participants were  
155 65-80 years of age, 58% female, and 76% white with starting BMI between 30 and 42 42 kg/m<sup>2</sup>.  
156 Intervention related change in total and regional body composition were published  
157 previously.<sup>13,14</sup> Briefly, over the course of the six month period, total body mass was significantly  
158 reduced in the WL group [-8.2 kg (-9.6, -6.8)] as compared with the WS group [-1.2 kg (-2.6,  
159 0.3)], with 87% of total mass lost as fat [WL: -7.1 kg (-8.1, -6.1) kg; -16% change from  
160 baseline]. Significant reductions in VAT were also observed in the WL [-1.9 kg (-1.7, -2.1); -  
161 20.1%], but not WS [2.3 kg (2.2, 2.5); 2.1%], group.<sup>14</sup> In contrast, lean mass loss was much more  
162 modest, and no differential treatment effect was observed between groups [WL: -0.8 kg (-1.4, -  
163 0.2] vs WS: -0.2 kg (-0.9, 0.4) kg]. **Figure 1** highlights the broad distribution in weight, total fat,  
164 and VAT mass lost over the intervention compared to change in lean mass in the current study  
165 sample (N = 74).

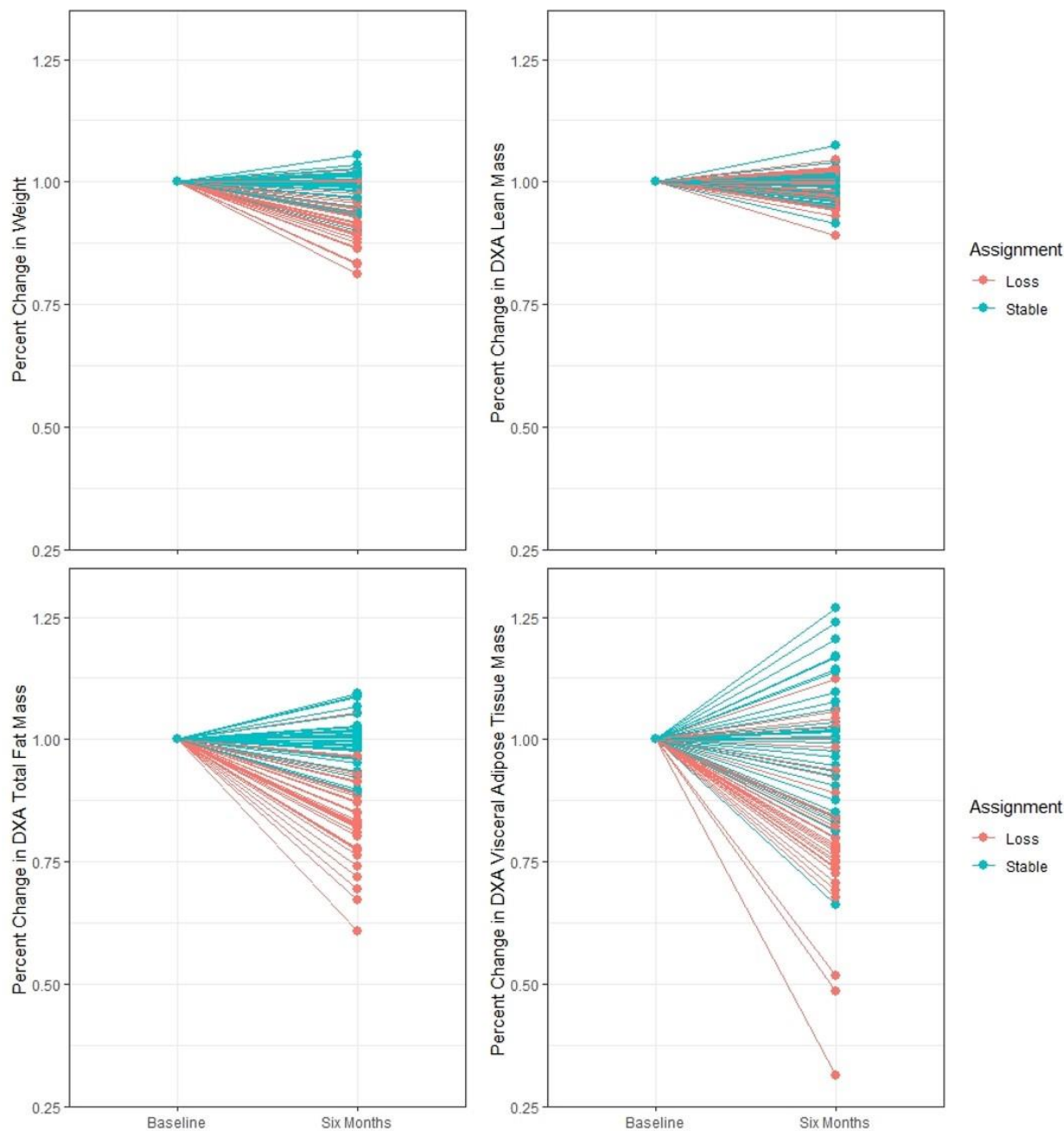
166 **Table 1** Demographic characteristics and baseline and six-month change in body composition for weight loss and  
167 weight stable groups

	<u>Weight Loss</u>	<u>Weight Stable</u>
<b>Group N (%)</b>		
Female	28 (74%)	27 (75%)
Male	10 (26%)	9 (25%)
White	27 (71%)	29 (81%)
Black	11 (29%)	7 (19%)
<b>Mean (StDev)</b>		
Age at Baseline	71.4 (4.0)	68.9 (3.1)
BMI at Baseline	34.8 (3.6)	35.5 (3.2)
Change in Weight, kg	-7.9 (5.5)	-0.5 (2.9)
Change in Lean Muscle Mass (kg)	-2.9 (3.4)	-0.5 (1.0)
Change in Fat Mass (kg)	-6.9 (4.2)	-0.02 (2.0)
Change in VAT Mass (kg)	-0.8 (0.9)	-0.7 (0.3)

168



169



170

171 **Figure 1 Change in Weight and Body Composition.** From baseline to six months, the percent change in total body  
172 weight, lean mass, fat mass, and VAT mass in individuals randomized to the weight loss (orange; n=38) and weight  
173 stable (teal; n=36) groups.

174

175 *Metabolomics Data Generation and Normalization*

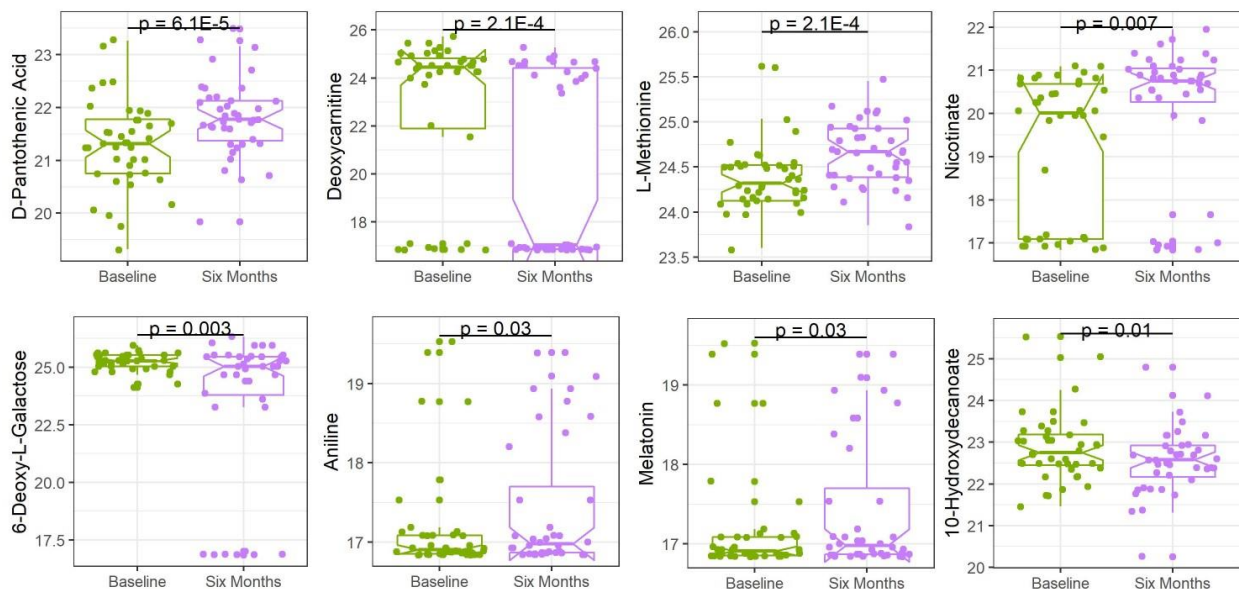
176 We detected 102 unique mass spectrometry features (MS1 peaks) peaks present above  
177 background levels in at least 10 samples corresponding to 118 metabolites due to some overlap  
178 in chromatographic separation. After normalization, three individuals were removed from the  
179 sample for non-standard distributions of metabolites identified in the principal components  
180 analysis (PCA). This appears to have been driven by the number of missing metabolites in these  
181 samples.

### 182 *Metabolites Associated with Participant Baseline Characteristics*

183 In the baseline plasma samples, we identified only two metabolites (creatine and 5,6-  
184 dihydrouracil) differing by gender, and none that differ by age or race. We note that all  
185 participants are between 65 and 80 years old, so the effect of age on metabolite variability will be  
186 muted.

### 187 *Metabolomic Differences in Weight Loss vs. Weight Stable*

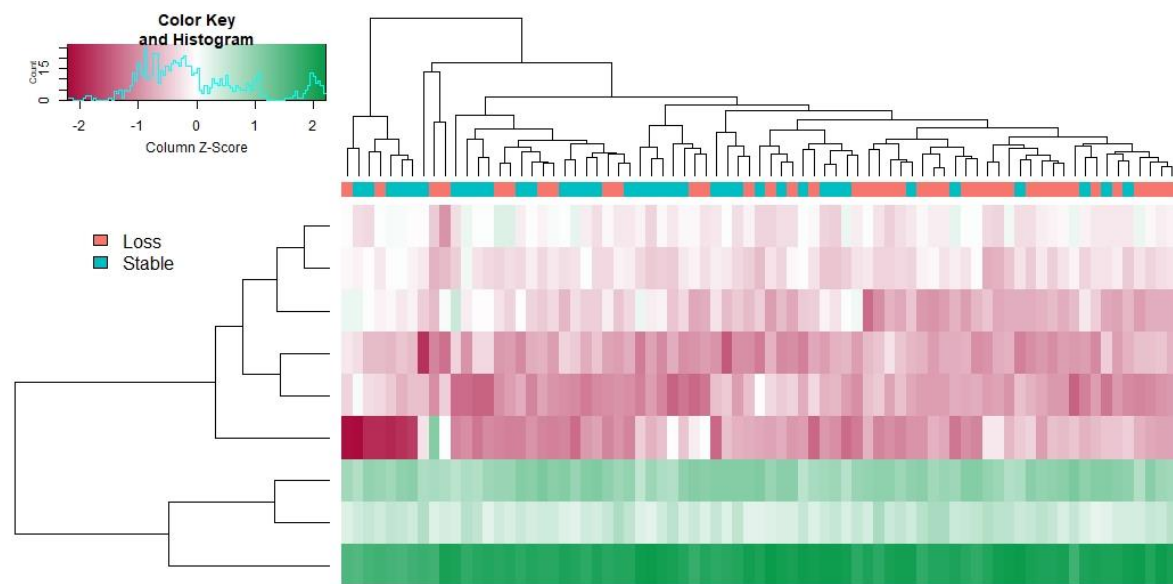
188 No significant differences in metabolite abundance were found between the WL and WS  
189 groups at baseline. After six months on the intervention diet, five metabolites - D-pantothenic  
190 acid, L-methionine, nicotinate, aniline, and melatonin – decreased in the WL group but not the  
191 WS group while three metabolites increased – deoxycarnitine, 6-deoxy-L-galactose, and 10-  
192 hydroxydecanoate using a nominal  $\alpha = 0.05$  (**Figure 2**). The heatmap in **Figure 3** shows the  
193 clustering of WL and WS plasma samples and metabolites at six months based on differentially  
194 expressed metabolites. We note that the clustering of the WL and WS groups are not mutually  
195 exclusive across the top axis.



196

197 **Figure 2 Change in Mean Metabolite Abundance in Weight Loss Group.** The distribution with mean and inter-  
198 quartile ranges are shown for eight metabolites with nominally significant p-values in Welch's t-tests between  
199 baseline and the end of the six-month weight loss intervention.

200



201

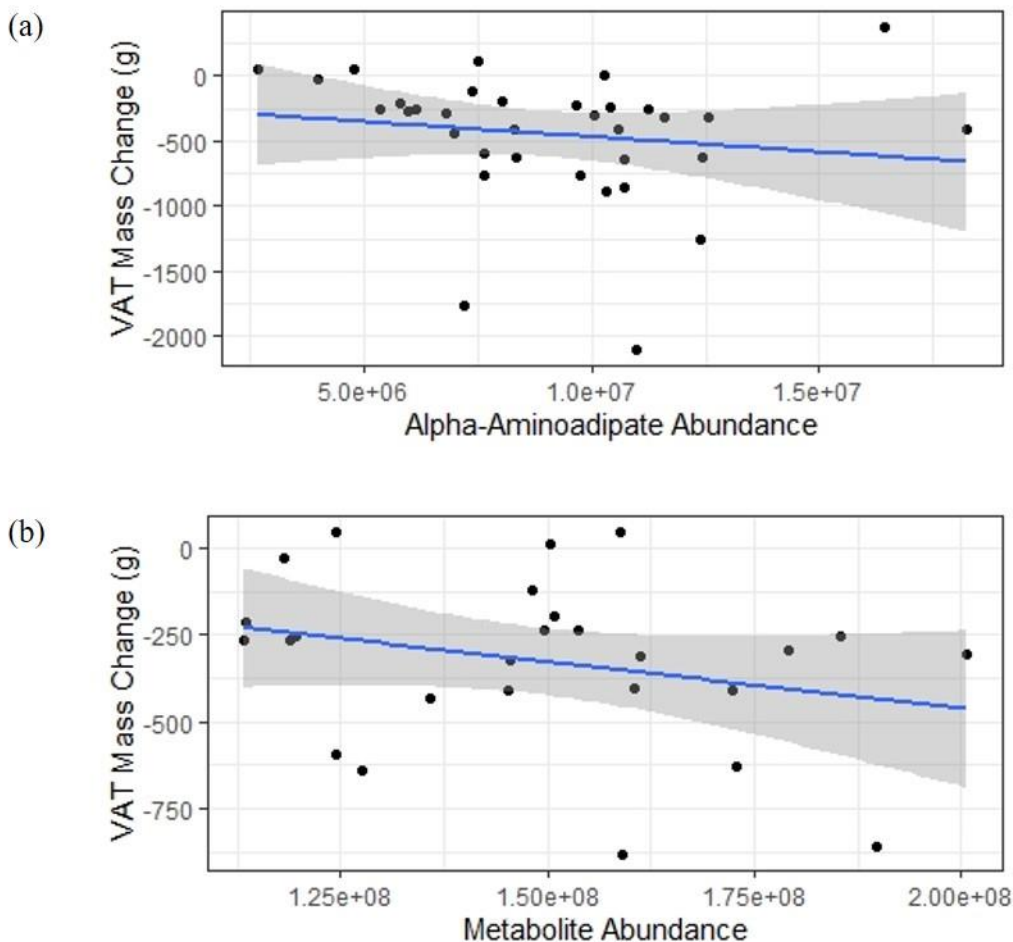
202 **Figure 3 Heatmap of Differentially Expressed Metabolites between Weight Loss and Weight Stable Groups at**  
203 **End of Intervention.** Based on metabolites with nominally significant ( $p < 0.05$ ) Welch's t-tests comparing WL and  
204 WS groups at the six-month time point, this heatmap shows clustering of highly expressed (green) and lowly  
205 expressed (red) metabolites. The dendrogram at the top clusters individuals based on the similarity of their  
206 metabolite profiles with individuals in the WL group in orange and WS group in teal.

207

208 *Metabolites Associated with Change in Weight and Fat Mass*

209 We evaluated change in metabolite abundance for all 102 MS1 peaks from baseline to six  
210 months versus percent change in weight, total fat mass, or VAT to evaluate metabolites that may  
211 be produced during weight loss. At a Bonferroni-correct  $p = 0.0007$ , no metabolites were  
212 significantly associated.

213 When comparing percent change in weight and fat mass with baseline variables to  
214 identify potential predictive biomarkers, one MS peak was marginally significant in the full  
215 analysis,  $\alpha$ -aminoadipate ( $R^2 = 0.29$ ,  $p = 0.0007$ ). This peak was also nominally significant in the  
216 female-specific analysis. In the female-specific analysis, metabolite abundance at one MS peak is  
217 significantly associated at  $p = 0.0001$  ( $R^2 = 0.46$ ). This peak is linked to eight potential  
218 metabolites present in the Mass Spectrometry Metabolite Library (D-fructose, myo-inositol,  
219 mannose,  $\alpha$ -D-glucose, allose, D-galactose, D-tagatose, or L-sorbose), which cannot be  
220 distinguished by accurate mass or chromatography profiles. **Figure 4** shows the relationship  
221 between each peak intensity in WL participants at baseline versus VAT change over  
222 intervention.



223

224 **Figure 3 Scatter Plot of Baseline Metabolite Abundance vs. Change in VAT.** (a) Abundance of  $\alpha$ -amino adipate  
225 at baseline in all individuals randomized to WL vs. VAT mass change in grams following intervention. (b)  
226 Abundance of the indeterminate metabolite at baseline vs. VAT mass change for females in the WL group only.

227

## 228 DISCUSSION

229 The goal of this study was to identify metabolites associated with inter-individual  
230 differences in total and regional fat loss during a weight loss intervention in older adults known  
231 to produce a lean mass sparing effect. When compared to the weight stable group, three  
232 metabolites increased across the intervention (deoxycarnitine, 6-deoxy-l-galactose, and 10-  
233 hydroxydecanoate) while five metabolites decreased (D-pantothenic acid, L-methionine,

234 nicotinate, aniline, and melatonin). Additionally, we report an association between greater  
235 baseline levels of  $\alpha$ -aminoadipate (also called 2-aminoadipic acid) and myo-inositol or  
236 carbohydrate metabolites ( $\alpha$ -D-glucose, allose, mannose, D-galactose, D-fructose, and L-  
237 sorbose) with larger decreases in visceral adipose tissue. This information is a critical first step  
238 in developing personalized approaches to optimize weight loss interventions for older adults.

239         Given the dearth of literature concerning the metabolites that change in response to  
240 change in diet, it is difficult to hypothesize about the origins of diet-associated metabolite  
241 increases that were observed in our study, but is possible they are related to the long-term change  
242 in diet (e.g., caloric restriction or dietary composition). Interestingly, deoxycarnitine has  
243 previously been shown to increase following weight loss interventions in animal models.<sup>24</sup> Since  
244 deoxycarnitine is the final intermediate for endogenous L-carnitine biosynthesis, it is possible  
245 that L-carnitine biosynthesis was elevated in the weight loss group, resulting in greater decreases  
246 in visceral adipose tissue.<sup>25</sup>

247         Observed decreases in amino acids support previous observations and may reflect  
248 improvements in metabolic perturbations.<sup>26–28</sup> However, despite observing decreases in amino  
249 acids and visceral adipose tissue in the weight loss group, previous research examining the  
250 relationship between visceral fat depots and amino acids remains unclear and were not identified  
251 in our study.<sup>29–31</sup> The weight loss group also displayed declines in vitamin B family metabolites  
252 (pantothenic acid and nicotinate), which may have been a function of decreased food intake as  
253 part of enrolling in the intervention. Interestingly, decreases in melatonin occurred within the  
254 weight loss group, which has displayed promising effects for improving body composition and  
255 may ameliorate the consequences of obesity.<sup>32–34</sup>

256 To date, few studies have examined if baseline metabolomic signatures are associated  
257 with weight loss outcomes.<sup>17,18</sup> Stroeve et al.<sup>17</sup> suggested that 57% of weight loss success could  
258 be identified from baseline metabolomic signatures in morbidly obese men and women, which  
259 included acetoacetate, triacylglycerols, phosphatidylcholines, amino acids, creatine and  
260 creatinine. Additional observations suggest that baseline xylitol and uridine levels were inversely  
261 associated with weight loss, whereas 2-aminobutyric acid and glyceric acid were positively  
262 associated with weight loss  $\geq 10\%$  over a 1-year intervention.<sup>18</sup>

263 The metabolites identified in our study mirror and extend recent observations between  
264 these metabolites (e.g., myo-inositol and glycolytic/gluconeogenic intermediates) and visceral  
265 adipose tissue.<sup>35</sup> When previous research stratified weight loss participants into high- or low-  
266 responders post-intervention ( $\geq 7.2$  kg and  $\leq 5.2$  kg weight loss, respectively); myo-inositol,  
267 among other metabolite levels, were greater in the high-responders at baseline.<sup>36</sup> Additionally,  
268 previous research examining myo-inositol supplementation has also observed an attenuation of  
269 metabolic abnormalities.<sup>37-39</sup> Regarding the elevated carbohydrate metabolites, obesity has been  
270 shown to be associated with increased levels of these compounds, and the metabolomic signature  
271 of carbohydrate metabolism for obesity and diabetes are quite similar.<sup>40</sup> This is further bolstered  
272 by our association of elevated  $\alpha$ -aminoadipate levels at baseline with greater VAT mass loss.  
273 This metabolite is an oxidation product considered a biomarker of early stage diabetes and for  
274 cardiometabolic complications among individuals with diabetes.<sup>41,42</sup>

275 Personalized interventions to maximize overall improvements in health is the ultimate  
276 goal of weight-loss research in older adults. Because of its association with increased risk of  
277 cardiometabolic diseases<sup>43</sup> (independent of BMI), identification of biomarkers associated with  
278 loss of VAT may be particularly important in targeting dietary approaches that can minimize

279 lean mass loss while maximizing cardiometabolic benefit. Given the previous links between  
280 visceral adipose tissue and altered metabolic effects,<sup>35,44</sup> the elevated carbohydrate metabolites at  
281 baseline may identify individuals with greater metabolic irregularity (e.g., those with decreased  
282 metabolic health). While no study participants had diabetes, these baseline metabolites may  
283 represent individuals with the most to gain cardiometabolically from a weight loss intervention.

284         While studies of weight-loss associated metabolomic biomarkers have increased rapidly  
285 in recent years, we are among a limited number of studies to report baseline metabolite profiles  
286 associated with response to dietary interventions.<sup>15,17,18</sup> Our findings are limited by the fact that  
287 analyses were performed post hoc and the study was not originally designed or powered to  
288 evaluate metabolite associations. However, the identification of baseline glucose metabolites  
289 linked to variation in VAT loss provides an avenue to identify individuals who may benefit most  
290 from a lower-sugar dietary prescription. Future studies incorporating lipidomics or untargeted  
291 metabolomics could further elucidate differences at baseline that predict response to  
292 interventions.

293

## 294 **ACKNOWLEDGMENTS**

295         This work was supported by a grant from Jason Pharmaceuticals, Inc., a wholly owned  
296 subsidiary of Medifast, Inc., as well as the Wake Forest Claude D. Pepper Older Americans  
297 Independence Center (P30 AG21332) and Proteomics and Metabolomics Shared Resource Core  
298 (P30CA012197). Support was also provided by the National Institute on Aging through an  
299 exploratory and developmental grant (R21 AG061344) to KMB, DPB, and CF, career  
300 development award (K01 AG056663) to EQ and postdoctoral fellowship (T32 AG033534) to



301 RM. The content is solely the responsibility of the authors and does not necessarily represent the  
302 official views of the National Institute of Health.

### 303 **AUTHOR CONTRIBUTIONS**

304 Concept and design (KMB, DPB); acquisition of data (KMB, CF, JL, AOC, HW);  
305 analysis and interpretation of data (EQ, JL), drafting of manuscript (KMB, EQ, RM), critical  
306 revision (CF, DPB). CF takes responsibility for the accuracy and integrity of mass spectrometry  
307 data. EQ had full access to all the data in the study and takes responsibility for the accuracy of  
308 the data analysis. All authors approve the final version of the manuscript.

### 309 **CONFLICTS OF INTEREST**

310 Medifast, Inc. provided partial funding for the study and made an in-kind product  
311 donation for the meal replacements used in the study. The terms of this arrangement were  
312 reviewed and approved by Wake Forest University Health Sciences in accordance with its  
313 conflict of interest policies.

314

315 **REFERENCES**

- 316 1. Ward ZJ, Bleich SN, Cradock AL, et al. Projected U.S. state-level prevalence of adult  
317 obesity and severe obesity. *N Engl J Med*. 2019;381(25):2440-2450.  
318 doi:10.1056/NEJMsa1909301
- 319 2. Batsis JA, Zagaria AB. Addressing obesity in aging patients. *Med Clin North Am*.  
320 2018;102(1):65-85. doi:10.1016/j.mcna.2017.08.007
- 321 3. Houston DK, Nicklas BJ, Zizza CA. Weighty concerns: The growing prevalence of  
322 obesity among older adults. *J Am Diet Assoc*. 2009;109(11):1886-1895.  
323 doi:10.1016/j.jada.2009.08.014
- 324 4. Locher JL, Goldsby TSU, Goss AM, Kilgore ML, Gower B, Ard JD. Calorie restriction in  
325 overweight older adults: Do benefits exceed potential risks? *Exp Gerontol*. 2016;86:4-13.  
326 doi:10.1016/j.exger.2016.03.009
- 327 5. Batsis JA, Gill LE, Masutani RK, et al. Weight loss interventions in older adults with  
328 obesity: A systematic review of randomized controlled trials since 2005. *J Am Geriatr*  
329 *Soc*. 2017;65(2):257-268. doi:10.1111/jgs.14514
- 330 6. Chaston TB, Dixon JB, O'Brien PE. Changes in fat-free mass during significant weight  
331 loss: A systematic review. *Int J Obes*. 2007;31(5):743-750. doi:10.1038/sj.ijo.0803483
- 332 7. Fiatarone-Singh MA. Combined exercise and dietary intervention to optimize body  
333 composition in aging. *Ann N Y Acad Sci*. 1998;854:378-393.
- 334 8. Rejeski WJ, Brubaker PH, Goff DC, et al. Translating weight loss and physical activity  
335 programs into the community to preserve mobility in older, obese adults in poor  
336 cardiovascular health. *Arch Intern Med*. 2011;171(10):880-886.  
337 doi:10.1001/archinternmed.2010.522
- 338 9. Rejeski WJ, Ambrosius WT, Burdette JH, Walkup MP, Marsh AP. Community weight  
339 loss to combat obesity and disability in at-risk older adults. *Journals Gerontol - Ser A Biol*  
340 *Sci Med Sci*. 2017;72(11):1547-1553. doi:10.1093/gerona/glw252
- 341 10. Villareal DT, Apovian CM, Kushner RF, Klein S. Obesity in older adults: Technical  
342 review and position statement of the American Society for Nutrition and NAASO, the  
343 Obesity Society. *Obes Res*. 2005;13(11):1849-1863. doi:10.1038/oby.2005.228
- 344 11. Bauer J, Biolo G, Cederholm T, et al. Evidence-based recommendations for optimal  
345 dietary protein intake in older people: A position paper from the PROT-AGE study group.  
346 *J Am Med Dir Assoc*. 2013;14(8):542-559. doi:10.1016/j.jamda.2013.05.021
- 347 12. Kim JE, O'Connor LE, Sands LP, Slebodnik MB, Campbell WW. Effects of dietary  
348 protein intake on body composition changes after weight loss in older adults: A systematic  
349 review and meta-analysis. *Nutr Rev*. 2016;74(3):210-224. doi:10.1093/nutrit/nuv065
- 350 13. Beavers KM, Nesbit BA, Kiel JR, et al. Effect of an energy-restricted, nutritionally  
351 complete, higher protein meal plan on body composition and mobility in older adults with  
352 obesity: A randomized controlled trial. *Journals Gerontol - Ser A Biol Sci Med Sci*.

- 353 2019;74(6):929-935. doi:10.1093/gerona/gly146
- 354 14. Serra MC, Beavers DP, Henderson RM, Kelleher JL, Kiel JR, Beavers KM. Effects of a  
355 hypocaloric, nutritionally complete, higher protein meal plan on regional body fat and  
356 cardiometabolic biomarkers in older adults with obesity. *Ann Nutr Metab.*  
357 2019;74(2):149-155. doi:10.1159/000497066
- 358 15. Rangel-Huerta OD, Pastor-Villaescusa B, Gil A. Are we close to defining a metabolomic  
359 signature of human obesity? A systematic review of metabolomics studies. *Metabolomics.*  
360 2019;15(6):93. doi:10.1007/s11306-019-1553-y
- 361 16. Boone S, Mook-Kanamori D, Rosendaal F, et al. Metabolomics: a search for biomarkers  
362 of visceral fat and liver fat content. *Metabolomics.* 2019;15(10):1-12. doi:10.1007/s11306-  
363 019-1599-x
- 364 17. Stroeve JHM, Saccenti E, Bouwman J, et al. Weight loss predictability by plasma  
365 metabolic signatures in adults with obesity and morbid obesity of the DiOGenes study.  
366 *Obesity.* 2016;24(2):379-388. doi:10.1002/oby.21361
- 367 18. Geidenstam N, Al-Majdoub M, Ekman M, Spégel P, Ridderstråle M. Metabolite profiling  
368 of obese individuals before and after a one year weight loss program. *Int J Obes.*  
369 2017;41(9):1369-1378. doi:10.1038/ijo.2017.124
- 370 19. Weaver AA, Houston DK, Shapses SA, et al. Effect of a hypocaloric, nutritionally  
371 complete, higher-protein meal plan on bone density and quality in older adults with  
372 obesity: a randomized trial. *Am J Clin Nutr.* 2019;109(2):478-486.  
373 doi:10.1093/ajcn/nqy237
- 374 20. Shaver LN, Beavers DP, Kiel J, Kritchevsky SB, Beavers KM. Effect of intentional  
375 weight loss on mortality biomarkers in older adults with obesity. *Journals Gerontol - Ser*  
376 *A Biol Sci Med Sci.* 2019;74(8):1303-1309. doi:10.1093/gerona/gly192
- 377 21. Bolstad BM, Irizarry RA, Åstrand M, Speed TP. A comparison of normalization methods  
378 for high density oligonucleotide array data based on variance and bias. *Bioinformatics.*  
379 2003;19(2):185-193. doi:10.1093/bioinformatics/19.2.185
- 380 22. Ergun DL, Rothney MP, Oates MK, Xia Y, Wacker WK, Binkley NC. Visceral adipose  
381 tissue quantification using lunar prodigy. *J Clin Densitom.* 2013;16(1):75-78.  
382 doi:10.1016/j.jocd.2012.09.002
- 383 23. R Core Team. R: A language and environment for statistical computing. 2019.
- 384 24. Floerchinger AM, Jackson MI, Jewell DE, MacLeay JM, Paetau-Robinson I, Hahn KA.  
385 Effect of feeding a weight loss food beyond a caloric restriction period on body  
386 composition and resistance to weight gain in dogs. *J Am Vet Med Assoc.* 2015;247(4):375-  
387 384. doi:10.2460/javma.247.4.375
- 388 25. Vaz FM, Wanders RJA. Carnitine biosynthesis in mammals. *Biochem J.* 2002;361(3):417-  
389 429. doi:10.1042/0264-6021:3610417
- 390 26. Perez-Cornago A, Brennan L, Ibero-Baraibar I, et al. Metabolomics identifies changes in  
391 fatty acid and amino acid profiles in serum of overweight older adults following a weight

- 392 loss intervention. *J Physiol Biochem.* 2014;70(2):593-602. doi:10.1007/s13105-013-0311-  
393 2
- 394 27. Zheng Y, Ceglarek U, Huang T, et al. Weight-loss diets and 2-y changes in circulating  
395 amino acids in 2 randomized intervention trials. *Am J Clin Nutr.* 2016;103:505-511.
- 396 28. Almanza-Aguilera E, Brunius C, Bernal-Lopez MR, et al. Impact in Plasma Metabolome  
397 as Effect of Lifestyle Intervention for Weight-Loss Reveals Metabolic Benefits in  
398 Metabolically Healthy Obese Women. *J Proteome Res.* 2018;17(8):2600-2610.  
399 doi:10.1021/acs.jproteome.8b00042
- 400 29. Tanaka T, Ishizaka Y, Mitushima T, et al. Plasma amino acid profile is altered by visceral  
401 fat accumulation and is a predictor of visceral obesity in humans. *Nat Preced.* 2011.  
402 doi:10.1038/npre.2011.5560.1
- 403 30. Haufe S, Witt H, Engeli S, et al. Branched-chain and aromatic amino acids, insulin  
404 resistance and liver specific ectopic fat storage in overweight to obese subjects. *Nutr*  
405 *Metab Cardiovasc Dis.* 2016;26(7):637-642. doi:10.1016/j.numecd.2016.03.013
- 406 31. Menni C, Migaud M, Glastonbury CA, et al. Metabolomic profiling to dissect the role of  
407 visceral fat in cardiometabolic health. *Obesity.* 2016;24(6):1380-1388.  
408 doi:10.1002/oby.21488
- 409 32. Cipolla-Neto J, Amaral FG, Afeche SC, Tan DX, Reiter RJ. Melatonin, energy  
410 metabolism, and obesity: A review. *J Pineal Res.* 2014;56(4):371-381.  
411 doi:10.1111/jpi.12137
- 412 33. Amstrup AK, Sikjaer T, Pedersen SB, Heickendorff L, Mosekilde L, Rejnmark L.  
413 Reduced fat mass and increased lean mass in response to 1 year of melatonin treatment in  
414 postmenopausal women: A randomized placebo-controlled trial. *Clin Endocrinol (Oxf).*  
415 2016;84(3):342-347. doi:10.1111/cen.12942
- 416 34. Prado NJ, Ferder L, Manucha W, Diez ER. Anti-Inflammatory Effects of Melatonin in  
417 Obesity and Hypertension. *Curr Hypertens Rep.* 2018;20(5):45. doi:10.1007/s11906-018-  
418 0842-6
- 419 35. Neeland IJ, Boone SC, Mook-Kanamori DO, et al. Metabolomics Profiling of Visceral  
420 Adipose Tissue: Results From MESA and the NEO Study. *J Am Heart Assoc.* 2019;8(9).  
421 doi:10.1161/JAHA.118.010810
- 422 36. Piccolo BD, Keim NL, Fiehn O, Adams SH, Van Loan MD, Newman JW. Habitual  
423 physical activity and plasma metabolomic patterns distinguish individuals with low vs.  
424 high weight loss during controlled energy restriction. *J Nutr.* 2015;145(4):681-690.  
425 doi:10.3945/jn.114.201574
- 426 37. Corrado F, D'Anna R, di Vieste G, et al. The effect of myoinositol supplementation on  
427 insulin resistance in patients with gestational diabetes. *Diabet Med.* 2011;28(8):972-975.  
428 doi:10.1111/j.1464-5491.2011.03284.x
- 429 38. Giordano D, Corrado F, Santamaria A, et al. Effects of myo-inositol supplementation in  
430 postmenopausal women with metabolic syndrome: A perspective, randomized, placebo-  
431 controlled study. *Menopause.* 2011;18(1):102-104. doi:10.1097/gme.0b013e3181e8e1b1

- 432 39. Croze ML, Soulage CO. Potential role and therapeutic interests of myo-inositol in  
433 metabolic diseases. *Biochimie*. 2013;95(10):1811-1827. doi:10.1016/j.biochi.2013.05.011
- 434 40. Park S, Sadanala KC, Kim EK. A metabolomic approach to understanding the metabolic  
435 link between obesity and diabetes. *Mol Cells*. 2015;38(7):587-596.  
436 doi:10.14348/molcells.2015.0126
- 437 41. Wang TJ, Ngo D, Psychogios N, et al. 2-Aminoadipic acid is a biomarker for diabetes  
438 risk. *J Clin Invest*. 2013;123(10):4309-4317. doi:10.1172/JCI64801
- 439 42. Koska J, Saremi A, Howell S, et al. Advanced Glycation End Products, Oxidation  
440 Products, and Incident Cardiovascular Events in Patients With Type 2 Diabetes. *Diabetes*  
441 *Care*. 2018;41(3):570-576. doi:10.2337/dc17-1740
- 442 43. Shah R V., Murthy VL, Abbasi SA, et al. Visceral adiposity and the risk of metabolic  
443 syndrome across body mass index. *JACC Cardiovasc Imaging*. 2014;7(12):1221-1235.  
444 doi:10.1016/j.jcmg.2014.07.017
- 445 44. Gastaldelli A, Miyazaki Y, Pettiti M, et al. Metabolic effects of visceral fat accumulation  
446 in type 2 diabetes. *J Clin Endocrinol Metab*. 2002;87(11):5098-5103.  
447 doi:10.1210/jc.2002-020696
- 448