

1 **The impact of the COVID-19 pandemic on mental health in the general population – a comparison**
2 **between Germany and the UK**

3

4 **Franziska Knolle^{1,2}, Lisa Ronan², Graham K. Murray^{2,3}**

5 ¹Department of Neuroradiology, Klinikum rechts der Isar, TUM, München, Germany

6 ²Department of Psychiatry, University of Cambridge, Cambridge UK

7 ³Cambridgeshire and Peterborough NHS Foundation Trust, Cambridge, United Kingdom

8

9 **Contributions**

10 FK: administration of the project, conceptualisation, methodology, formal analysis and writing
11 (original draft, review and editing), administration of the project. LR: formal analysis, editing of
12 manuscript. GKM: methodology, and writing (review and editing).

NOTE: This preprint reports new research that has not been certified by peer review and should not be used to guide clinical practice.

13 **Abstract**

14 In March 2020 the SARS-CoV-2infection (COVID-19) was declared a pandemic. In response to its
15 world-wide outbreak radical measures were taken by governments across the world including
16 curfew, quarantine, travel bans, social distancing, work place and school closures, etc, to reduce the
17 transmission of the virus. These measures led to dramatic social and economic changes for the
18 general population, in addition to the fears and worries related to the disease and its contraction.
19 First studies report the impact of the pandemic on mental well-being of the general population
20 showing increased levels of anxiety, stress and depression. In this study, we compare the impact of
21 the pandemic on two European countries – the UK and Germany, which reported their first cases
22 within a week. 241 residents of the UK and 541 residents of Germany filled in an online survey,
23 including questions on COVID-19 exposure, impact on financial situation and work, substance and
24 media consumption, self-reported mental and physical health, as well as including two clinical
25 questionnaires, the general mental health Symptom Check List-27 (SCL-27) and the Schizotypal
26 Personality Questionnaire. Data collection was completed between 27/04/20-31/05/20. We found
27 distinct differences between the two countries. UK responders reported a stronger direct impact on
28 their health, financial situation and their families. UK responders had higher clinical scores on the
29 SCL-27, with a higher percentage being above cut-off. Interestingly, however, we found that German
30 responders were less hopeful for an end of the pandemic and more concerned about their life-
31 stability. Generally, we found that a younger age, being female, lower education, poorer mental and
32 physical health before the pandemic, as well as more social media and substance consumption was
33 associated with a higher clinical risk. This research shows strong differences between two
34 economically and culturally similar countries, but as 25% of both German and UK responders
35 reported a subjective worsening of the general psychological symptoms and 20-50% of German and
36 UK responders reached the clinical cut-off for depressive, dysthymic and anxieties, it specifically
37 shows the need for health emergency tailored intervention systems to assist not only people
38 vulnerable for mental health problems, but also large proportions of the general public.

39

40 **Keywords**

41 COVID-19, mental health, general population, SPQ, depression

42 Introduction

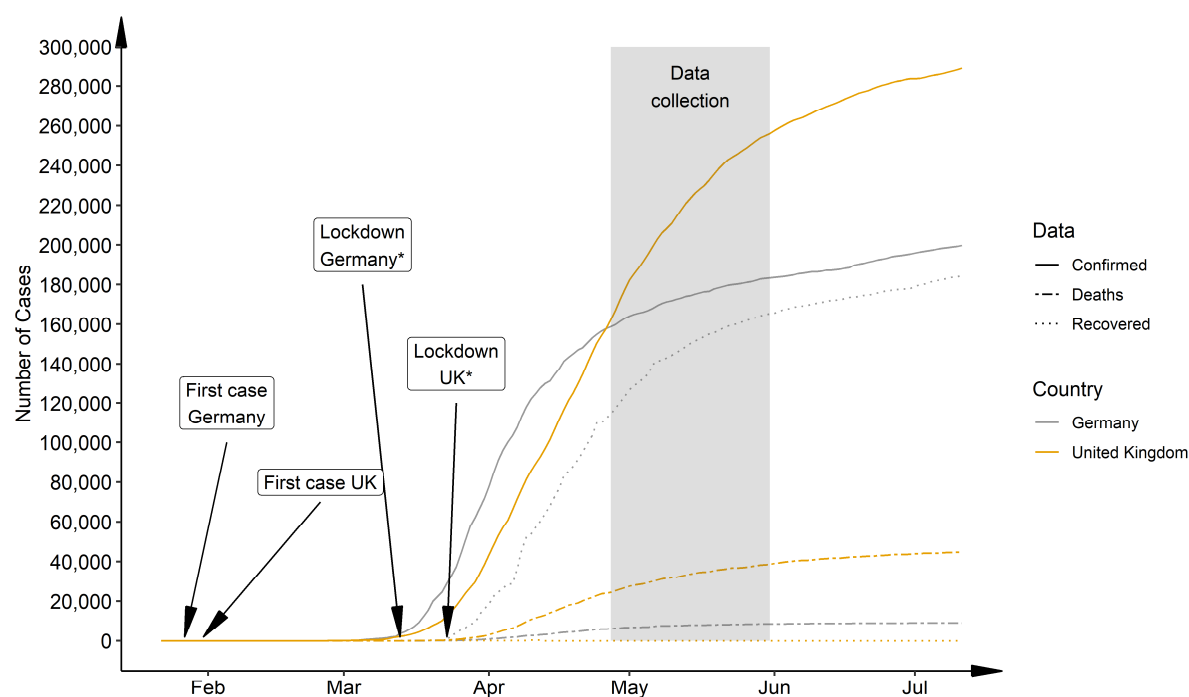
43 The world health organisation (WHO) declared the outbreak of the coronavirus disease 2019 SARS-
44 CoV-2 (COVID-19) a pandemic on March 11, 2020. By that time, more than 118000 people had been
45 confirmed to have conducted COVID-19 world-wide across 114 countries (WHO-Media-Briefing).
46 China, where the virus was first discovered, had introduced a nationwide lockdown and curfew on
47 January 23, 2020. With the rapid spread to Europe and other parts of the world, more countries
48 introduced similar measures, including lockdown with school and work-place closures, self-isolation
49 and social distancing, border closures, restrictions of travel, to reduce the transmission of the virus.

50 On March 18, 2020 the WHO published a statement presenting mental health and psychosocial
51 considerations for the general public, acknowledging the potential impact of this public health
52 emergency on mental health of the general population [2]. As the COVID-19 outbreak compared to
53 other recent pandemics or medical emergencies is larger in scale, its consequences are unprecedented
54 and therefore more difficult to predict. It has however led to immediate and serious concerns on
55 mental health of the whole society [3] with calls for urgent and direct actions [4]. From former
56 epidemics, as recently reviewed by Brooks and colleagues [5], such as the 2003 epidemic of the
57 severe acute respiratory syndrome (SARS) or the 2014 outbreak of Ebola, we know that quarantine,
58 isolation and social distancing is related to anxiety, depression, stress, low mood, irritability, sleep
59 disorders, etc. In the current pandemic, however, we have seen lock-down of entire countries for
60 much longer periods of time. Increase of job insecurity and economic hardship [6,7], as well as
61 domestic violence [8,9], substance abuse [10] and media consumption [11,12] have been discussed
62 as risk factors for worsening the impact on mental health. First studies provide findings on the
63 impact of these stressors and dramatic changes in everyday life on the mental health of the general
64 population (e.g. [13–15]) reporting increased levels of stress, anxiety, depressive symptoms, sleep
65 disorders as well as an increase in suicidal ideation, etc.

66 In response to the outbreak and spread of the pandemic, different countries even within Europe
67 followed different strategies. Germany went into lockdown rapidly and managed to control the
68 increase of infections effectively, whereas the UK due to a delayed lockdown faced a much higher
69 plateau (see Figure 1)[16] which also led to an increase in numbers of deaths that were at the end of
70 April 2020 20% higher than predicted, whereas Germany was nearly 3% lower than expected.
71 Balmford and colleagues (2020) used epidemiological models to estimate the “price of life” that
72 various nation were willing to pay in order to protect their populations. They estimated at the end of
73 April that the German government was prepared to pay a factor of 10 more per life than the UK. It is
74 to be expected that these different strategies and governmental responses have an impact on the

75 nation's mental well-being. We were therefore interesting in comparing the mental health impact of
76 the pandemic on the general population of the UK and Germany, using an online survey investigating
77 the impact on life circumstances and assessing mental health with two different psychological
78 questionnaires (Symptom Check List, SCL-27; Schizotypal Personality Questionnaire, SPQ). We
79 hypothesised that responders of both nations, UK and Germany, would report an increase in
80 psychological symptoms, but that the increase would be stronger in UK responders. We
81 supplemented the general mental health questionnaire SCL-27 with the SPQ, as we reasoned that a
82 potential increase in anxiety and distress could be accompanied by an increase in psychotic-like
83 experiences [17] that could be captured in the SPQ.

84



85

86 Figure 1. National progression of COVID-19 cases, deaths and recoveries comparing Germany and
87 the UK from Jan. 22,2020 – Jul. 11,2020. Recovery rate UK: after April 12., 2020 recovered cases are
88 not reported for the UK. *Germany followed a state-wise lockdown, with the first state going in lock-
89 down on Mar.13,2020 and the last state on the Mar. 16, 2020. UK announced nationwide lockdown
90 on Mar.23, 2020. Data taken from 2019-nCoV Data Repository by JHU CSSE.

91

92

93 **Methods**

94 *Study design and procedure*

95 The questionnaire assessing mental and physical health and COVID-19 exposure was designed as an
96 online survey using EvaSys (<https://www.evasys.de>, Electric Paper Evaluationssysteme GmbH,
97 Luneburg, Germany), a software suitable for the generation of surveys with a highly secure data
98 protection. The questionnaire was available in German and English. Initial advertisement for the
99 study was made via social (facebook, twitter, newsletters, WhatsApp) and print media
100 (Sueddeutsche Zeitung) following the snowball sampling strategy to reach the general public. Data
101 collection took place from 27/04/2020 -31/05/2020. The completion of the survey took
102 approximately 35 min. Participation was fully voluntary. Participants did not receive any
103 compensation.

104 Ethical approval was obtained from the Ethical Commission Board of the Technical University
105 Munich (250/20 S). All respondents included in the analyses provided informed consent.

106

107 *Outcome*

108 The survey consisted of three main parts. The first part, partially comprised of the Coronavirus
109 Health Impact Survey (CRISIS, <http://www.crisissurvey.org/>), which assessed (a) demographics, (b)
110 COVID-19 exposure (infection status, symptoms, contact), (c) mental and physical health questions.
111 In the second part, we assessed the general mental health status using the Symptom Check List (SCL)
112 with 27 items [18,19]. Here, we assessed (d) depressive, dysthymic, vegetative, agoraphobic and
113 socio-phobic symptoms, as well as symptoms of mistrust. For all SCL-symptom measures we
114 recorded (e) a subjective rating of change during the pandemic compared to before the pandemic.
115 Using the SCL-27, we furthermore measured (f) a global severity of symptom index (GSI-27). In the
116 third part, we evaluated schizotypic symptoms using the Schizotypy Personality Questionnaire (SPQ,
117 [20]) assessing (g) the subscales anomalous experiences and beliefs (AEB), social Anhedonia (SAnh),
118 paranoid ideation (PI), social anxiety (SAnx), eccentricity (Ecc), and disorganised speech (DS) [21], as
119 well as the total score (SPQ-total). As for the SCL-27, also for the SPQ we evaluated (h) a subjective
120 measure for change during compared to before the pandemic.

121

122 *Statistical analysis*

123 Statistical analysis and visualisations were computed using R (RStudio Team (2020). RStudio:
124 Integrated Development for R. RStudio, PBC, Boston, MA URL <http://www.rstudio.com/>). We
125 present a description of the whole sample, but concentrate in our statistical analysis on the
126 comparison of Germany and the United Kingdom (UK) with regard to the outcome measure. We first
127 describe demographics and COVID-19 exposure variables, using frequency analysis. For the country
128 comparison we used a chi-square test to explore differences between the groups on the
129 demographics and the COVID-19 exposure variables.

130 To further explore the differences between the UK and Germany, we generated a logistically
131 normalised Poisson regression model with the between-subject factor country (UK, Germany) and
132 time (before and during the pandemic) and the Crisis-mental and physical wellbeing questions as
133 with-in subject factor. We organised the mental and physical health questions in five groups – sleep,
134 mental health, exercise/outdoor activities, media consumption, and substance and alcohol
135 consumption. The overall effects of each predictor within the model are analysed using an ANOVA
136 Chi-square test.

137 To identify possible predictors for worse or better functioning, we furthermore applied multivariate
138 Poisson regression models to assess the associations between the outcome and the predictor
139 variables. Our outcome variables were continuous scores measured using the SCL-27 and the SPQ.
140 We investigated total score (SPQ-total, GSI-27) as well as subscales for the SPQ and the SCL-27.

141 In order to generate the overview figure showing the progression of the COVID-19 cases, deaths and
142 recoveries, we pulled the data from the 2019 Novel CoronaVirus CoViD-19 (2019-nCoV) Data
143 Repository by Johns Hopkins University Center for Systems Science and Engineering (JHU CSSE)
144 (<https://github.com/CSSEGISandData/COVID-19>) on Jul. 11, 2020.

145

146

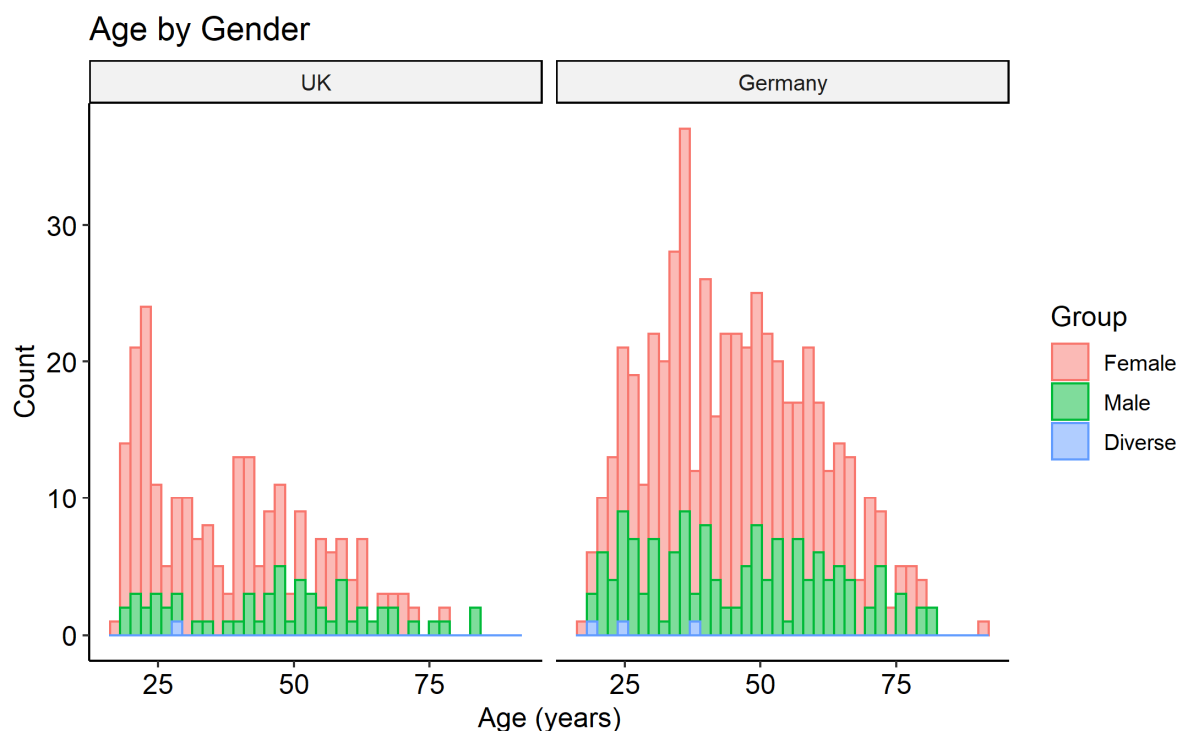
147 **Results**

148 *Whole Sample Description*

149 The survey was complete by 860 participants, two of which did not consent to the participation.
150 They were excluded for further analysis. Furthermore, 6 participants did not consent to sharing the
151 data publicly, and will be removed from the open access data set, but are included in the analysis of
152 this study.

153 The majority of respondents were female (71.6%), 25.4% were male, 0.5% diverse and 2.5% did not
154 provide the information. The age ranged from 18 to 92 years, with a mean 43.27 (SD 15.4) years and
155 a median of 41 years. The majority of participants were well educated 60.1% had a master degree or
156 higher, and 23.4% had completed a professional college or a bachelor degree. 47.3% reported to live
157 in large cities, 12% in suburbs of large cities, 19.2% in small cities, 15.3% in towns or villages, and
158 5.7% in rural areas (0.5% NA). People from 21 countries of residence completed the questionnaire,
159 with 27.9% living in the UK, 63.1% living Germany and 3.2% living in the USA, the remaining 5.8%
160 were living in other countries Europe, in Latin American countries, Asian countries, Australia and
161 Canada. Details are described in Table 1.

162



163
164 Figure 2. Distribution of age by gender for the UK and Germany separately.

165

166

167 *Demographics of Germany and the UK*

168 In this paper we focus on the comparison of respondents resident in the UK (N=239) and in Germany
169 (N=541). All descriptive and statistical results are described in Table 1. The UK sample was younger
170 (UK: 39.01yrs, GER: 45.36yrs; Figure 2). Both samples had more female responders (UK:73.6%, GER:
171 71.2%). The UK sample had fewer children at home than the German sample. The two samples
172 differed in education (Supplementary Figure 1), with UK respondents having more bachelor degrees.
173 The difference in education and children might possibly due to the age difference of the two samples
174 as we found using Kruskal-Wallis Test that age significantly predicted both (children: Kruskal-Wallis
175 chi-squared = 7.4601, df = 1, p-value = 0.006308; education: Kruskal-Wallis chi-squared = 100.04, df
176 = 7, p-value < 2.2e-16).

177

178 *COVID-19 Exposure, Impact and Personal Judgement*

179 To explore differences between the countries we used chi-square tests. All results are presented in
180 Table 1.

181 In our study, we found infection rates of 2.5% in the British sample and about 1 % in the German
182 sample (Suppl. Fig. 2). Of those who had symptoms with and without a diagnosed infection, most
183 participants suffered from *fatigue* (UK:28.5%; GER:27.7%) and *cough* (UK:21.3%; GER:15.5%)(Suppl.
184 Fig. 3). 9.8% of the German responders compared the 3.3% of the UK responders had contact to
185 people with a positive test, whereas 5.4% of UK responders compared to only 0.6% of German
186 responders had contact to people with a positive diagnosis, without a test (Suppl. Fig. 4). All findings
187 are presented in Table 1, COVID19 exposure.

188 The impact on the personal work situation was similar between the two countries. 50.6% of the UK
189 and 46.8% respondents had been moved to work in home office. 2.9% of the UK responders and
190 3.6% of the German responders had lost their job; and 13.0% compared to 17.4% reported no
191 impact on their work situation (Suppl. Fig. 5). The impact on the families of the responders was
192 different between the two countries; only 49.9% of the UK responders reported no impact,
193 compared to 71.9% of the German responders. 10.5% of the UK compared to 4.4% of the German
194 responders reported infections in the family; 3.8% compared to 0.4% reported cases death, 26.4% to
195 12.6% reported cases reduced working hours, and 10.9% to 4.4% reported cases of family members
196 losing jobs. UK responders reported a stronger financial impact, compared to German responders.
197 For 46% of the UK responders compared the 58.8% of the German responders reported no impact,

198 whereas 35.1% of the UK and 25.6% of the German responders reported a slight or moderate impact
199 and 18.8% and 15% a big or extreme impact. All findings are presented in Table 1, Impact on work
200 and financial situation.

201 In general the restrictions were rated similarly stressful between the two countries. 11.3% of the UK
202 and 14.8% of the German responders considered them as not stressful at all; whereas 54.8% of the
203 UK and 54.4% of the German responders found them slightly or moderately stressful; and 33.5% and
204 30.9% very or extremely stressful. UK responders were less concerned about their overall life
205 stability with 46.4% compared to 30.5% of the German responders being not all concerned; 36.4%
206 compared to 54.1% being slightly or moderately concerned; and 15.9% compared to 24% being very
207 or extremely concerned. UK responders were also more hopeful that the pandemic in their region
208 would soon be under control, with 32.7% compared to 17.1% of the German responders being very
209 or extremely hopeful; 52.8% compared to 65% being slightly or moderately hopeful; and 14.2%
210 compared to 17.9% being not at all hopeful. All findings are presented in Table 1, Personal
211 judgement of the situation.

212 UK responders rated their mental health status differently compared to the German responders.
213 36% of the UK responders compared to 52.3% of the German responders reported very good or
214 excellent mental health; 51.4% compared to 42.9% reported good or fair mental health; and 11.3%
215 compared to 3.3% reported poor mental health. Also more UK responders received regular
216 treatment for their mental illnesses before the pandemic (17.6% compared to 10.1%). The treatment
217 was continued similarly during the pandemic across the two countries. 3.6% of the UK responders
218 compared to 1% of the German responders received more treatment, 13.6% compared to 11.5% less
219 and 82.8% compared to 87.8% the same as before the pandemic. Physical health was judged
220 similarly across the two countries. 45.2% of the UK responders and 44.6% of the German responders
221 reported excellent or very good physical health. 49% of the UK and 51.2% of the German responders
222 reported good or fair physical health; 3.8% compared to 3.3% reported poor physical health. Regular
223 treatment for physical illnesses was similar between the two countries (UK:18.4%; Germany: 20.2%)
224 and the treatment continued in a similar fashion, with 1.8% of UK responders compared to 0% of
225 German reporting more, 14.3% compared to 14.4% reporting less, and 83.9% compared to 85.6%
226 reporting about the same amount of treatment during the pandemic. All findings are presented in
227 Table 1, Mental and physical health status.

228

229 *Self-report on sleep, mental health, exercise/outdoor activities, media consumption, and*
230 *substance/alcohol consumption before and during the pandemic*

231 To explore the association between the outcome variables and the predictors (time point, i.e. before
232 or during the pandemic, and country of residence, i.e. Germany and UK) we used a logistic
233 regression model for a Poisson distribution and logistically normalised, all results are presented in
234 Table 2.

235 For *exercise and time spent outside* there was an effect of the variable's levels (amount of exercise
236 per week; amount of time spent outside per week) ($p < 0.001$), effect of country of residence
237 ($p = 0.014$), variable's levels by country ($p < 0.001$); and variable's levels by time point ($p = 0.040$).
238 Exercise and time spent outside varied by country of residence and its effect by the pandemic, but
239 the countries do not change differently in response to the pandemic.

240 Regarding the variable *sleep*, sleeping patterns differ in weeks compared to weekends ($p < 0.001$),
241 but there were no significant effects of country or time point ($p > 0.05$).

242 Analysing *media consumption*, distinct types of media (levels: social media, print media, video
243 games) were consumed differently ($p < 0.001$), and there was an effect of time point ($p < 0.001$),
244 showing that overall media was consumed differently before and during the pandemic. Additionally
245 we found the responders of the two countries used media differently ($p < 0.001$), though this
246 difference was not affected by the time point.

247 For the *consumption of substances* including alcohol, different substances (levels: alcohol, tobacco,
248 vaping, marijuana) were differently consumed ($p < 0.001$) and that this consumption differed
249 between the two countries ($p < 0.001$). However, we did not find an effect of time point.

250 Regarding self-reported *mental well-being*, we found a difference between the individual levels of
251 mental well-being (levels: happy-sad, concerned, anxious, lonely, agitated, tired/fatigued, negative
252 thoughts, etc.) ($p < 0.001$). There was an overall effect of time point ($p < 0.001$) and these levels were
253 differently affected by the time point ($p < 0.001$). Responders from the two countries responded
254 differently to the different levels of mental well-being ($p < 0.001$). But we did not find that this
255 difference was affected by the time point.

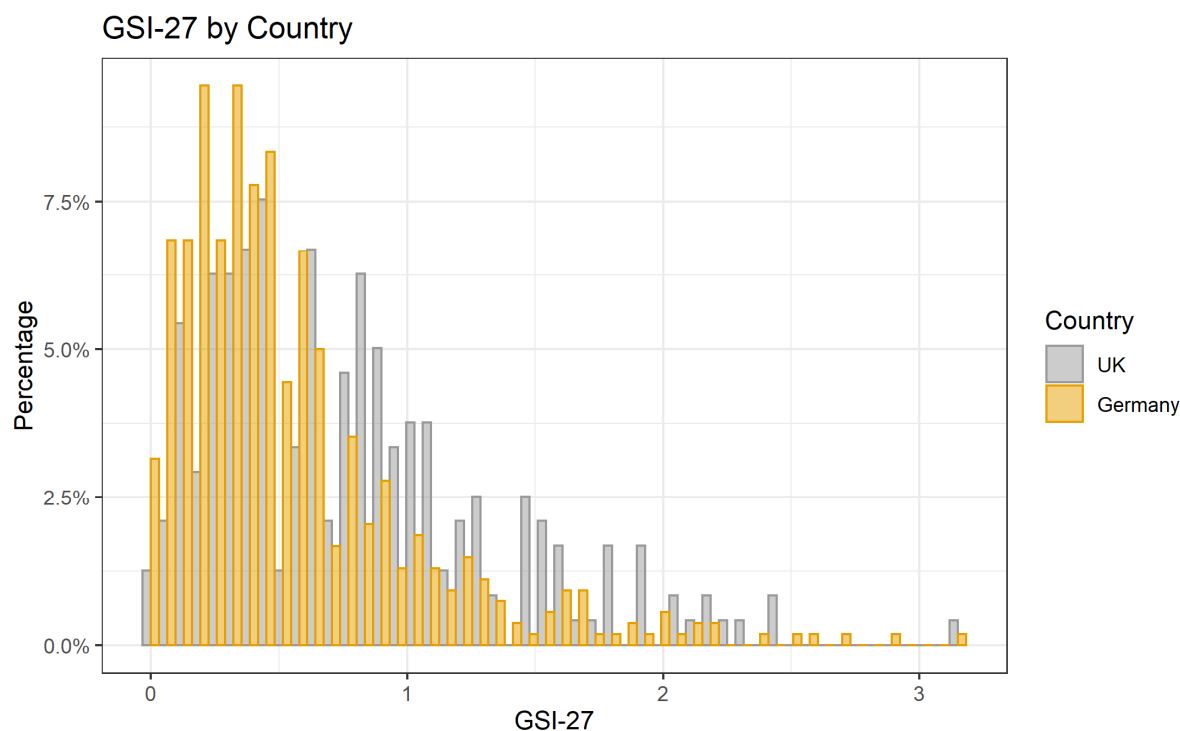
256

257 *Effects of the pandemic on psychological symptoms using the Symptom Check List – 27-Point (SCL-27)*

258 *General Symptom Index*

259 A Wilcoxon-test for non-parametric data, showed that the distribution of the GSI was different
260 between the two countries ($W = 84062$, $p\text{-value} = 1.515e-11$, 95%-confidence interval: 0.148-0.296;
261 sample estimate for location difference: 0.222). See Figure 3.

262



263

264 Figure 3. Histogram of distribution of the global severity index based on 27 items (GSI-27) for
265 psychological symptoms, separately shown for countries.

266

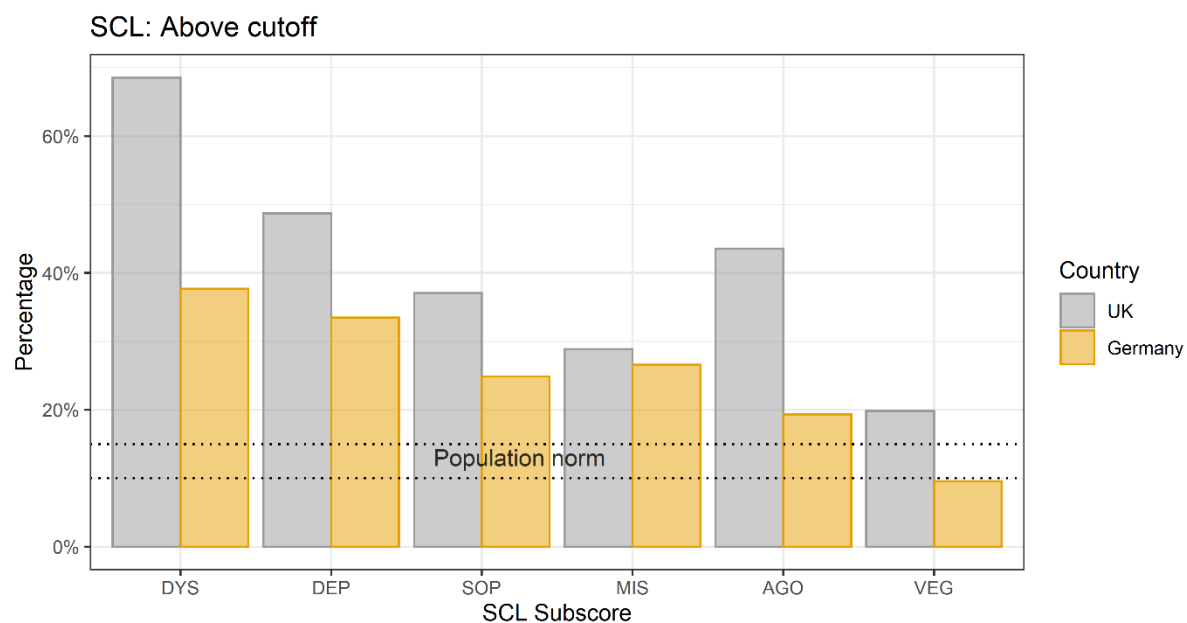
267 *Clinical cut-off for SLC sub-dimensions and subjective change*

268 In the general population [22], 10-15% of the screened population reach the clinical cut-off on the
269 different sub-dimensions, and require additional investigation. As shown in Figure 4, for the sub-
270 dimension of dysthymic symptoms (DYS) 68.5% of the UK responders and 37.6% of the German
271 responders lay above the clinical cut-off; for depressive symptoms it was 48.7% for the UK and
272 33.5% for the German responders; for symptoms of social phobia 37.1% for the UK and 24.9% for
273 German responders; for symptoms of mistrust 28.9% for the UK and 26.6% for the German sample;
274 for agoraphobic symptoms 43.5% UK and 19.3% for the German responders; and for the vegetative
275 symptoms 19.8% for the UK and 9.6% for the German responders.

276 We furthermore recorded a subjective rating of change by asking responders on each question of
277 the SCL-27, whether or not this feeling has stay the same, has increased or decreased during the
278 pandemic. In the UK sample 27.0% of the responders reported an increase of symptoms, 3.6% a
279 decrease and 64.1% reported that symptoms stayed the same; whereas in the German sample
280 22.8% reported more symptoms, 2.5% less and 71.7% the same amount of symptoms (Figure 5).

281

282

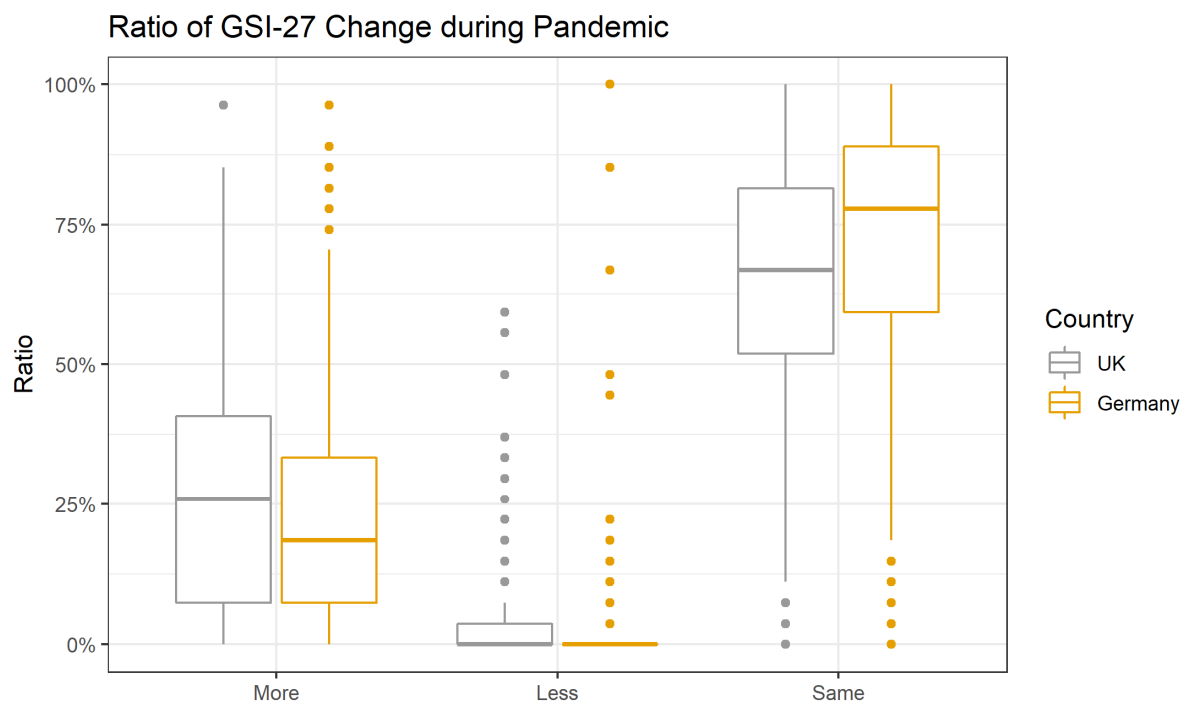


283

284 Figure 4. Percentage of responders above clinical cut-off separately for UK and Germany. Dotted
285 lines represent the percentage of the norm population above threshold. DYS: dysthymic symptoms,
286 DEP: depressive symptoms, SOP: symptoms of social phobia, MIS: symptoms of mistrust, AGO:
287 agoraphobic symptoms, VEG: vegetative symptoms.

288

289



290

291 Figure 5. Boxplot shows the subjective change of global symptom index during the pandemic
292 measured with the SCL, separately for Germany and the UK.

293

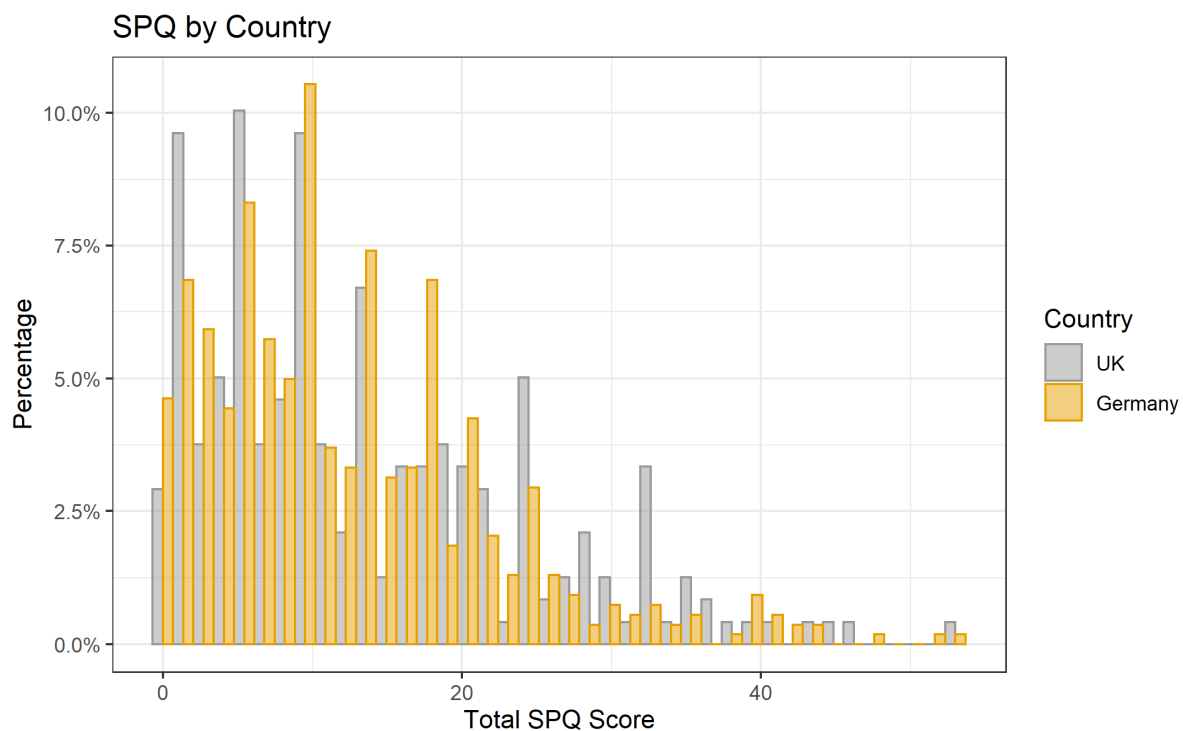
294 *Effects of the pandemic on the schizotypal personality traits using the Schizotypal Personality*
295 *Questionnaire (SPQ)*

296 *Total SPQ and subject change during the pandemic*

297 Using a Wilcoxon-test for non-parametric data, we found that the distribution of the total SPQ-score
298 was not different between the two countries ($W=68110$, $p\text{-value} = 0.23$). See Figure 6.

299 Also for the SPQ, we recorded a subjective rating of change by asking responders on each question,
300 whether or not this feeling/situation has stay the same, has increased or decreased, or has occurred
301 the first time during the pandemic. In the UK sample, 14.7% of the responders reported symptoms
302 as before, 4.8% reported an increase, 1.2% a decrease and 4.4% an occurrence for the first time;
303 similarly, in the German sample, 14.2% reported that symptoms stayed the same, 4.1% reported an
304 increase, 1% a decrease and 3.5% an occurrence for the first time. See Figure 7. The subjective
305 change of all sub-dimensions is presented in Supplementary figure.

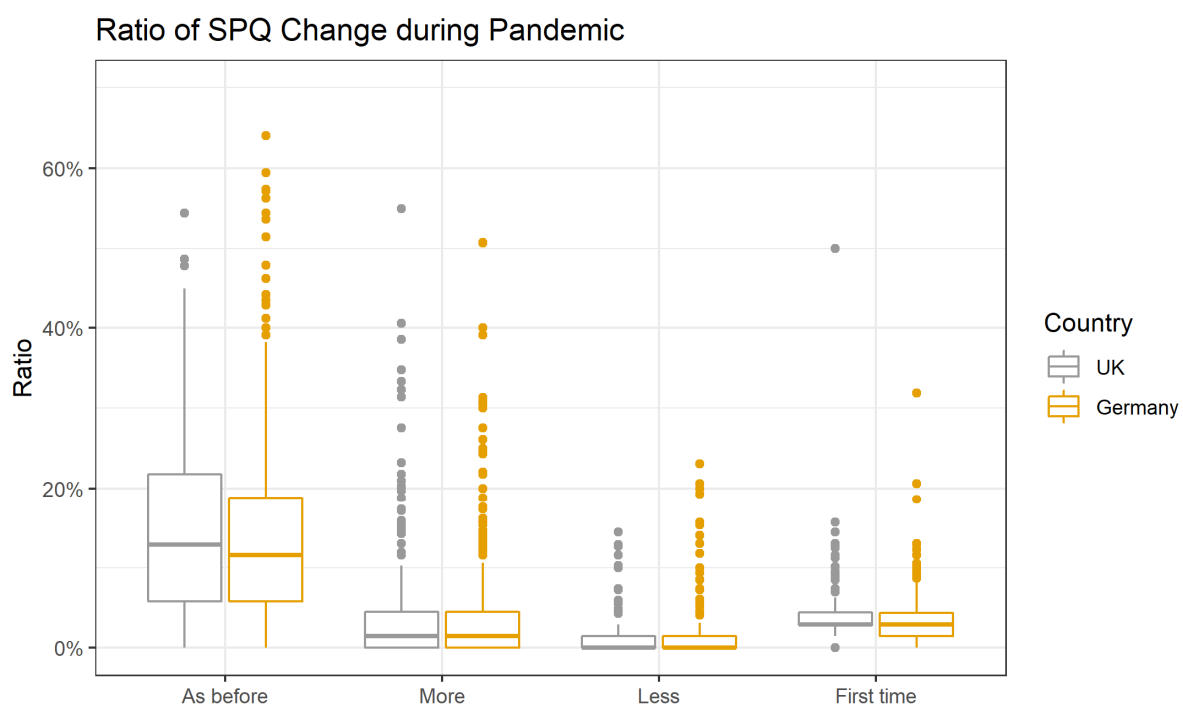
306



307

308 Figure 6. Histogram of distribution of the total schizotypal personality score (SPQ_total), separately
309 shown for countries.

310



311

312 Figure 7. Boxplot shows the subjective change of schizotypy symptoms during the pandemic
313 measured with the SPQ-scale, separately for Germany and the UK.

314

315 *Association between demographic variables, variables of substance use, media use, sleep, and*
316 *clinical scores*

317 In order to investigate predictive factors among demographic variables, variables describing
318 exercise, sleep, etc, contributing to clinical scores we conducted two sets of logarithmically
319 normalised multivariate Poisson regression analysis – one set using the GSI and the SCL-
320 subdimensions as outcome variables, and the second set using total SPQ score and the
321 subdimensions as outcome variables. All associations are described in Table 3A and Table4A. In
322 summary for the GSI, we found that responders from Germany have a significantly lower GSI score;
323 female responders are more strongly affected, as well as people with higher consumption rates of
324 marihuana; people who use more social media. Interestingly, people who sleep more (>8h) during
325 week nights have lower GSI scores as well as people who spend more time outside. The predictors
326 and risk factors shift slightly depending on the different subdimensions, but the overall picture is
327 similar.

328 Interestingly, for the total SPQ score, there was no association with country or gender, instead we
329 saw a protective association with being older, as well as with having a better education. Apart from
330 alcohol consumption, which has a protective association, increased use of tobacco, vaping and
331 marihuana was associated with a higher SPQ scores, and so was the use of social media and video
332 games. The increased use of print media however was associated with lower SPQ scores. Similarly to
333 the associations with GSI, more sleep during the week and the weekend and more time spent
334 outside had a protective association with the total SPQ.

335

336 *Association between COVID-19 impact measures, judgement as well as health, and clinical scores*

337 Again we conducted two sets of logarithmically normalised multivariate Poisson regression analyses
338 – one set using the GSI and the SCL-subdimensions as outcome variables, and the second set using
339 total SPQ score and the subdimensions as outcome variables. All associations are described in Table
340 3B and Table4B respectively. People who were more concerned about their life stability showed a
341 higher GSI. Unsurprising, but with a very strong effect, people who report poor mental health prior
342 to the pandemic were more strongly affected; interestingly the same is true for people who
343 reported low physical health. A protective association is seen for people whose quality of social
344 relationships had not been affected much by the pandemic. Again a similar picture with some
345 variations becomes apparent for the subdimensions. See Table3B.

346 For the total SPQ score, in this analysis, as opposed to the previous statistical model, female gender
347 was associated with a higher risk. Whereas increased hopefulness for the pandemic to end in the
348 near future was protective, the concern about life stability was a risk factor. People who have been
349 more strongly financially impacted showed higher SPQ-total scores. As also seen for the GSI, people
350 who reported poor mental health prior to the pandemic were more strongly affected; the same is
351 true for people who reported low physical health. Interestingly, whereas working in a home office or
352 being on unpaid leave has a protective effect on the SPQ-total, people who did not see any change in
353 their workplace were also associated with higher total SPQ scores. See Table 4B.

354

355

356

357

358 Discussion

359 This study investigated the difference between the impact of the COVID-19 pandemic on the UK and
360 Germany. The impact was assessed using an online survey including questions on the impact on life
361 circumstances, as well as two psychological questionnaires, the Symptom Check List (SCL-27) and the
362 Schizotypal Personality Questionnaire (SPQ). The data was collected over five weeks from April 27,
363 2020 to Mai 31, 2020. We found that UK responders reported more infections and symptoms, a
364 stronger financial hardship, and a stronger impact on health and the financial situation of family
365 members. We found that responders of both countries reported an increase in psychological
366 symptoms, especially depressive symptoms and anxieties. The global severity index (GSI) of the SCL
367 was higher in UK responders compared to German responders. An alarming finding was that the
368 percentage of people above clinical cut-off on the SCL-27 compared to a norm population had more
369 than doubled for depressive, dysthymic and agoraphobic symptoms as well as for social phobias, and
370 this increase was stronger in UK responders compared to German responders. We did not find
371 differences in the SPQ or its subscales between the two countries. However, and similar to the SCL-
372 27, even on this highly specified questionnaire, responders reported an increase of symptoms in
373 about 9% with half of those reporting symptoms for the first time. Interestingly, despite the
374 differences between the two countries UK responders were still more hopeful for a sooner end of
375 the pandemic in their region, were less concerned about overall life stability and reported more
376 positive changes due to the pandemic (e.g., time with the family, no commute, time for one-self).

377 In simple associative prediction models, we furthermore identified risk factors for the psychological
378 impact of the pandemic. Being UK resident, female, younger, having a lower education, a worse pre-
379 pandemic mental or physical health, as well as being more concerned about life stability, spending
380 less time outside and reporting a stronger negative impact of the pandemic on the qualities of social
381 contacts predicted higher scores of the GSI, as well as depressive, dysthymic symptoms as well as
382 symptoms of anxiety. Higher scores on the SPQ total-score and its subdimensions were predicted by
383 younger age, lower education, more substance (tobacco, vaping, marihuana) and media (social and
384 video games), less sleep, less time spent outside, worse quality of social contacts, and a worse pre-
385 pandemic mental and physical health.

386 To the best of our knowledge this is the first study showing a direct comparison of the psychological
387 impact of the pandemic between two countries. There is one large scale study (N=13,332) reporting
388 a world-wide assessment of the psychological impact of COVID-19 [15]. This study identified
389 prevalence and risk factors globally, but does not draw direct comparisons between different WHO-
390 regions. Interestingly, however, Plomecka and colleagues (2020) report similar overall risk factors as

391 we report in our study, such as being female, younger, less optimistic, and having worse social
392 relationships and pre-pandemic.

393 Other studies investigate the psychological impact of the pandemic with a national focus. Two
394 longitudinal studies conducted in UK populations [23,24] show a general deterioration of mental
395 health in April compared to before the pandemic. Both studies identify similar risk factors such as
396 being female, younger of age and having pre-pandemic mental health conditions. The same is true
397 for research conducted on German populations. A study by Bäuerle and colleagues [25] reports an
398 increase in anxiety, depression and psychological distress with females and younger adults reported
399 a stronger impact. The same is being reported in a description of preliminary results in a second
400 German cohort study [26].

401 Our study does not contain true pre-pandemic data. However, we assessed subjective measures of
402 change questions on life circumstance and mental health question including the psychological
403 questionnaires, asking participants to either report on that particular question three month ago or
404 report whether the situation had changed compared to before the pandemic and whether
405 symptoms had increased, decrease or stayed the same. In the UK population, we found a tripling of
406 the percentage of people lying above cut-off compared to a norm population for depressive,
407 dysthymic and agoraphobic symptoms, and a doubling on symptoms of social phobia and symptoms
408 of mistrust. Similarly, Kwong and colleagues (2020) report a doubling of symptoms of anxiety in a UK
409 sample. In the cohort of German responders in our study, we found a doubling for depressive and
410 dysthymic symptoms, as well as for symptoms of social phobia and symptoms of mistrust. The
411 increase in our study compared to Kwong et al (2020) might be due to the fact that the SCL-27 aims
412 at a high sensitivity, but a low specificity on the individual symptoms. However, the higher rates
413 compared to population norms is alarming, which is even higher in UK compared to German
414 responders. Around 25% of the German and UK responders reported a subjective increase in
415 symptoms on the SCL-27.

416 Overall, our results match those of countries in a global comparison [15] as well as to compared to
417 individual countries such as China [13,27], Japan [28], India [29,30], Italy [31] or Spain [32,33]. The
418 comparison of the two countries is difficult, as we did not assess any pre-baseline characteristics of
419 the two countries, and both countries vary on a large number of factors not accounted for in this
420 study that might have additionally contributed to the difference. However, the governments of both
421 countries followed different strategies in responding to the pandemic, whereas the German
422 government implemented a prompt lock-down [16], the British government first discussed herd-
423 immunity [34], causing a significant delay to implement the lock-down, which according to different

424 predictive models has significantly increased the number of death in the UK [16]. It is likely that the
425 burden of higher death rates and hospitalisations has increased the impact on mental well-being
426 described in this study.

427 Interestingly, we find this dichotomy between a stronger financial and health impact of the
428 pandemic on UK residents compared to German residents, and still a more optimistic judgment of
429 the overall situation of the UK compared to the German residents. Further research would be
430 needed to further investigate how pre-existing cultural attitudes contribute to these differences. We
431 speculate there could be cultural differences in how likely people are to complain about their
432 personal situation in a questionnaire, also there could be some linguistic difference in how these
433 questions are understood by participants of the two countries. Another line of future enquiry could
434 examine the role of such attitudes as the stereotypes of the British 'Keep calm and carry on' way of
435 life [35] compared to the German stereotype of criticism and pessimism [36].

436 Although the WHO provided general guidelines for countries to respond to the pandemic, different
437 countries implemented measures at different time points according to regional differences in cases,
438 but also following different strategies due to the novelty of the situation. Comparing Germany and
439 the United Kingdom (UK), the first cases in both countries were reported only four days apart, in
440 Germany on January 27, 2020 and in the UK on January 31, 2020. Germany, however, started to
441 introduce a state-wise lockdown on March 13, with all states to be in lockdown on March 16,
442 whereas, the UK went into lockdown on March 23. Both countries showed an exponential rise in
443 cases. At the time when we started the data collection the rise in cases in Germany was slowing
444 down, whereas the cases in the UK were still increasing quickly, which may have influenced the
445 results. The convenience sample nature of the participants is a limitation as it could also contribute
446 to the observed results. Although our study does include participants with pre-existing mental illness
447 (overall: 14.22%; UK:20.29%; Germany: 11.59%), it was not designed to specifically address mental
448 health impact of the pandemic on those with severe and enduring mental illness, as this would
449 require a more targeted study design.

450 *Limitations*

451 This study has potential limitations which need to be considered when interpreting the results. First,
452 we used a purely online data collection methods, therefore, people without or with limited access to
453 computers or mobile phone, or less well-versed using these methods would be excluded from the
454 sample. However, in order maximally ease the accessibility of the questionnaire we provided an
455 online version with smart-phone compatible formatting. Second, we used a snowball sampling
456 method, therefore, the sample is not fully representable of the general population. The results of

457 the study should therefore be interpreted considering the sample's demographics. Third, comparing
458 two countries is problematic as the countries vary on a large number of factors that are not and
459 cannot be accounted for in detail. Therefore, any differences between the countries presented in
460 this study might be linked to baseline differences. However, by specifically asking for a subjective
461 change considering a pre versus during pandemic time point, we are trying to minimise this
462 confound. Fourth, we used a self-reporting survey without clinical in-person verifications. Social
463 distancing measures complicate such verification. However, by using a completely voluntary and
464 anonymous format, as well as standardised questionnaires we are minimising potential effects. And
465 fifth, we are presenting simple logistic prediction models without testing for confounds and
466 interactions, although this approach may not present conclusive results, it does allow for
467 comparison with other studies following the same approach. Furthermore, we wish to generate
468 hypothesis for future research rather than definitive inference.

469 *Conclusion*

470 In conclusion, we find increased levels of depressive, dysthymic, vegetative symptoms, symptoms of
471 anxiety and mistrust in both countries. Furthermore we find that 20-50% reach the clinical cut-off for
472 further psychological interventions compared to 10-15% in the norm population. UK responders
473 report a stronger health and financial impact, as well as a stronger impact on their families. Both
474 countries require a tailored response to this mental health emergency.

475

476 **Acknowledgement**

477 We thank the participants of the study who contributed their time and further circulated the survey.

478 **Funding**

479 FK received funding from the European Union's Horizon 2020 [Grant number 754462].

480 **Conflict of Interest**

481 All authors declare no competing financial interests.

482

483

484 **References**

- 485 [1] WHO-Media-Briefing. WHO-Media-Briefing n.d.
486 [https://www.who.int/dg/speeches/detail/who-director-general-s-opening-remarks-at-the-](https://www.who.int/dg/speeches/detail/who-director-general-s-opening-remarks-at-the-media-briefing-on-covid-19---11-march-2020)
487 [media-briefing-on-covid-19---11-march-2020.](https://www.who.int/dg/speeches/detail/who-director-general-s-opening-remarks-at-the-media-briefing-on-covid-19---11-march-2020)
- 488 [2] WHO. Mental health and psychosocial considerations during the COVID-19 outbreak, 18
489 March 2020. World Health Organization; 2020.
- 490 [3] Pfefferbaum B, North CS. Mental health and the Covid-19 pandemic. *N Engl J Med* 2020.
- 491 [4] Holmes EA, O'Connor RC, Perry VH, Tracey I, Wessely S, Arseneault L, et al. Multidisciplinary
492 research priorities for the COVID-19 pandemic: a call for action for mental health science. *The*
493 *Lancet Psychiatry* 2020.
- 494 [5] Brooks SK, Webster RK, Smith LE, Woodland L, Wessely S, Greenberg N, et al. The
495 psychological impact of quarantine and how to reduce it: rapid review of the evidence.
496 *Lancet* 2020.
- 497 [6] Uutela A. Economic crisis and mental health. *Curr Opin Psychiatry* 2010;23:127–30.
- 498 [7] Evans-Lacko S, Knapp M, McCrone P, Thornicroft G, Mojtabai R. The mental health
499 consequences of the recession: economic hardship and employment of people with mental
500 health problems in 27 European countries. *PLoS One* 2013;8:e69792.
- 501 [8] Usher K, Bhullar N, Durkin J, Gyamfi N, Jackson D. Family violence and COVID-19: Increased
502 vulnerability and reduced options for support. *Int J Ment Health Nurs* 2020.
- 503 [9] Mazza M, Marano G, Lai C, Janiri L, Sani G. Danger in danger: Interpersonal violence during
504 COVID-19 quarantine. *Psychiatry Res* 2020:113046.
- 505 [10] Volkow ND. Collision of the COVID-19 and addiction epidemics 2020.
- 506 [11] Gao J, Zheng P, Jia Y, Chen H, Mao Y, Chen S, et al. Mental health problems and social media
507 exposure during COVID-19 outbreak. *PLoS One* 2020;15:e0231924.
- 508 [12] Garfin DR, Silver RC, Holman EA. The novel coronavirus (COVID-2019) outbreak: Amplification
509 of public health consequences by media exposure. *Heal Psychol* 2020.
- 510 [13] Wang C, Pan R, Wan X, Tan Y, Xu L, McIntyre RS, et al. A longitudinal study on the mental
511 health of general population during the COVID-19 epidemic in China. *Brain Behav Immun*
512 2020.

- 513 [14] Wang J, Alsop DC, Song HK, Maldjian JA, Tang K, Salvucci AE, et al. Arterial transit time
514 imaging with flow encoding arterial spin tagging (FEAST). *Magn Reson Med* 2003.
515 <https://doi.org/10.1002/mrm.10559>.
- 516 [15] Plomecka MB, Gobbi S, Neckels R, Radziński P, Skórko B, Lazerri S, et al. Mental Health Impact
517 of COVID-19: A global study of risk and resilience factors. *MedRxiv* 2020.
- 518 [16] Balmford B, Annan JD, Hargreaves JC, Altoè M, Bateman IJ. Cross-Country Comparisons of
519 Covid-19: Policy, Politics and the Price of Life. *Environ Resour Econ* 2020:1–27.
- 520 [17] Murray GK, Jones PB. Psychotic symptoms in young people without psychotic illness:
521 Mechanisms and meaning. *Br J Psychiatry* 2012;201:4–6.
522 <https://doi.org/10.1192/bjp.bp.111.107789>.
- 523 [18] Hardt J, Gerbershagen HU. Cross-validation of the SCL-27: A short psychometric screening
524 instrument for chronic pain patients. *Eur J Pain* 2001;5:187–97.
- 525 [19] Hardt J, Dragan M, Kappis B. A short screening instrument for mental health problems: The
526 Symptom Checklist-27 (SCL-27) in Poland and Germany. *Int J Psychiatry Clin Pract*
527 2011;15:42–9.
- 528 [20] Raine A. The SPQ: A Scale for the Assessment of Schizotypal Personality Based on DSM-III-R
529 Criteria. *Schizophr Bull* 1991;17:555–64. <https://doi.org/10.1093/schbul/17.4.555>.
- 530 [21] Davies DJ. Psychotic experiences beyond psychotic disorders: from measurement to
531 computational mechanisms. University of Cambridge; 2017.
- 532 [22] Hardt J, Egle UT, Kappis B, Hessel A, Brähler E. Die Symptom-Checkliste SCL-27. *PPmP-*
533 *Psychotherapie· Psychosom Medizinische Psychol* 2004;54:214–23.
- 534 [23] Kwong ASF, Pearson RM, Adams MJ, Northstone K, Tilling K, Smith D, et al. Mental health
535 during the COVID-19 pandemic in two longitudinal UK population cohorts. *MedRxiv* 2020.
- 536 [24] Pierce M, Hope H, Ford T, Hatch S, Hotopf M, John A, et al. Mental health before and during
537 the COVID-19 pandemic: a longitudinal probability sample survey of the UK population. *The*
538 *Lancet Psychiatry* 2020.
- 539 [25] Bäuerle A, Teufel M, Musche V, Weismüller B, Kohler H, Hetkamp M, et al. Increased
540 generalized anxiety, depression and distress during the COVID-19 pandemic: a cross-sectional
541 study in Germany. *J Public Health (Bangkok)* 2020.
- 542 [26] Jung S, Kneer J, Krueger T. The German COVID-19 Survey on Mental Health: Primary Results.

- 543 MedRxiv 2020.
- 544 [27] Qian M, Wu Q, Wu P, Hou Z, Liang Y, Cowling BJ, et al. Psychological responses, behavioral
545 changes and public perceptions during the early phase of the COVID-19 outbreak in China: a
546 population based cross-sectional survey. MedRxiv 2020.
- 547 [28] Ueda M, Stickley A, Sueki H, Matsubayashi T. Mental Health Status of the General Population
548 during the COVID-19 Pandemic: A Cross-sectional National Survey in Japan. MedRxiv 2020.
- 549 [29] Kene P. Mental health implications of the COVID-19 pandemic in India. Psychol Trauma
550 Theory, Res Pract Policy 2020;12:585.
- 551 [30] Kochhar AS, Bhasin R, Kochhar GK, Dadlani H, Mehta VV, Kaur R, et al. Lockdown of 1.3 billion
552 people in India during Covid-19 pandemic: A survey of its impact on mental health. Asian J
553 Psychiatr 2020.
- 554 [31] Rossi R, Socci V, Talevi D, Mensi S, Niolu C, Pacitti F, et al. COVID-19 pandemic and lockdown
555 measures impact on mental health among the general population in Italy. An N= 18147 web-
556 based survey. MedRxiv 2020.
- 557 [32] González-Sanguino C, Ausín B, ÁngelCastellanos M, Saiz J, López-Gómez A, Ugidos C, et al.
558 Mental health consequences during the initial stage of the 2020 Coronavirus pandemic
559 (COVID-19) in Spain. Brain Behav Immun 2020.
- 560 [33] Ozamiz-Etxebarria N, Dosil-Santamaria M, Picaza-Gorrochategui M, Idoiaga-Mondragon N.
561 Stress, anxiety, and depression levels in the initial stage of the COVID-19 outbreak in a
562 population sample in the northern Spain. Cad Saude Publica 2020;36:e00054020.
- 563 [34] Sibony A-L. The UK COVID-19 Response: A Behavioural Irony? Eur J Risk Regul 2020:1–8.
- 564 [35] Storry M, Childs P. British cultural identities. Taylor & Francis; 2016.
- 565 [36] Cliffe J. Cheer up, Deutschland. Economist 2018.
566 <https://www.economist.com/europe/2018/08/02/cheer-up-deutschland> (accessed August
567 27, 2020).

568

Table 1. Cohort demographics and COVID-19 exposure including impact on life; and differences between Germany and the UK.

		Whole sample	UK	Germany	Chi ² for country comparison: UK vs. GER
N		858	239	541	
Age		43.27yrs (SD15.4)	39.01yrs (SD16.0)	45.36yrs (SD14.8)	
Gender	Female	71.6%	73.6%	71.2%	X-squared = 0.36042, df = 2, p-value = 0.8351
	Male	25.4%	24.3%	25.9%	
	Diverse	0.5%	0.4%	0.6%	
	Missing	2.5%	1.7%	2.4%	
Education	School leavers	0.1%	0.4%	-	X-squared = 69.309, df = 7, p-value = 2.038e-12 ***
	8years – A-Levels	14.3%	19.2%	13.1%	
	Professional college or Bachelor	24.3%	31.8%	21.6%	
	Masters or higher	60.1%	47.3%	64.9%	
	Missing	1.2%	1.3%	0.4%	
Children at home (max.18years)	Yes	28.1%	21.1%	30.7%	X-squared = 7.8323, df = 1, p-value = 0.005132 **
	Missing	2.0%	1.6%	2.6%	
COVID19 exposure					
Suspected infection	Positive Test	0.1%	-	0.2%	X-squared = 7.2523, df = 3, p-value = 0.06428
	Diagnosis	1.3%	2.5%	0.7%	
	Symptoms	15.6%	18.8%	14.2%	
	No infection	82.2%	78.7%	83.9%	
	Missing	0.8%	-	0.9%	
Symptoms	Fever	8.5%	10.0%	8.0%	X-squared = 1.038, df = 1, p-value = 0.3083 (based on 'no symptoms')
	Cough	17.1%	21.3%	15.5%	
	Shortness of breath	9.4%	10.0%	9.8%	
	Sore throat	21.2%	23.4%	19.9%	
	Fatigue	27.4%	28.5%	27.7%	
	Lost smell/taste	2.9%	4.2%	2.2%	
	Infected eyes	3.7%	3.8%	3.5%	
	Other symptoms	6.3%	6.3%	6.7%	
	No symptoms	55.2%	51.9%	55.8%	
Contact to people with potential infection	Positive test	7.8%	3.3%	9.8%	X-squared = 1.143, df = 1, p-value = 0.285 (based on 'no contact')
	Diagnosis	2.1%	5.4%	0.6%	
	Symptoms	12.8%	17.2%	11.7%	
	No contact	78.1%	74.9%	78.4%	
Impact on work and financial situation					
Impact on work	Home office	48.7%	50.6%	46.8%	X-squared = 2.3897, df = 1, p-value = 0.1221
	Reductions of hours	7.1%	6.7%	7.4%	

	Unpaid leave	2.6%	3.4%	2.4%	(based on 'no change')
	Overtime/negative hours [‡]	7.7%	1.3%	11.3%	
	Lost job	3.9%	2.9%	3.7%	
	No change	16.1%	13.0%	17.4%	
Impact on family	Infected	5.8	10.5%	4.4%	X-squared = 38.313, df = 1, p-value = 6.025e-10 *** (based on 'no impact')
	Hospitalised	1.8%	1.7%	2.0%	
	Death	1.3%	3.8%	0.4%	
	Quarantine, symptoms	15.3%	23.9%	12.2%	
	Quarantine, no symptoms	7.5%	14.6%	4.6%	
	Reduced working hours	16.7%	26.4%	12.6%	
	Lost job	6.8%	10.9%	4.4%	
	No impact	65.9%	49.0%	71.9%	
Financial impact of COVID-19	No impact	54.0%	46.0%	58.8%	X-squared = 19.185, df = 4, p-value = 0.0007227 ***
	Slight	16.4%	23.4%	12.8%	
	Moderate	13.3%	11.7%	12.8%	
	Big	12.6%	15.9%	11.7%	
	Extreme	3.3%	2.9%	3.3%	
	Missing	0.5%	-	0.7%	
Not enough money for food	Yes	2.9%	2.9%	3.1%	X-squared = 0.025974, df = 1, p-value = 0.872
	Missing	1.1%	1.0%	1.0%	
Personal judgement of the situation					
Are the restrictions stressful?	Not at all	13.5%	11.3%	14.8%	X-squared = 6.312, df = 4, p-value = 0.177
	Slightly	26.8%	29.3%	26.3%	
	Moderately	27.6%	25.5%	28.1%	
	Very	20.5%	24.3%	18.7%	
	Extremely	11.3%	9.2%	12.2%	
	Missing	0.2%	0.4%	-	
How concerned are you about your life stability?	Not at all	34.6%	46.4%	30.5%	X-squared = 21.661, df = 4, p-value = 0.0002341 ***
	Slightly	23.4%	22.2%	23.8%	
	Moderately	19.1%	14.2%	21.3%	
	Very	15.4%	10.9%	17.2%	
	Extremely	6.8%	5.0%	6.8%	
	Missing	0.7%	1.3%	0.4%	
How hopeful are you of a soon end of the pandemic in your region of residence?	Not at all	17.1%	14.2%	17.9%	X-squared = 28.824, df = 4, p-value = 8.489e-06 ***
	Slightly	32.1%	27.6%	34.9%	
	Moderately	28.6%	25.2%	30.1%	
	Very	14.7%	19.7%	12.8%	
	Extremely	7.6%	13.0%	4.3%	
Does the pandemic have any positive impact on	No	35.0%	31.0%	36.4%	X-squared = 14.225, df = 2, p-value = 0.0008147 ***
	Few	35.6%	29.3%	37.7%	
	Some	29.1%	38.9%	25.9%	
	Missing	0.4%	0.8%	-	

your personal life?					
Mental and physical health status					
Self-rated mental health, before COVID-19	Excellent	15.0%	14.2%	15.3%	X-squared = 34.938, df = 4, p-value = 4.783e-07 ***
	Very good	32.4%	21.8%	37.0%	
	Good	28.7%	30.1%	28.3%	
	Fair	16.4%	21.3%	14.6%	
	Poor	5.8%	11.3%	3.3%	
	Missing	1.6%	1.3%	1.5%	
Regular treatment for mental illness, before pandemic	Yes	13.3%	17.6%	10.1%	X-squared = 8.7436, df = 1, p-value = 0.003107 **
	Missing	11.4%	13.4%	7.2%	
Continuation of treatment during pandemic	More	2.3%	3.6%	1.0%	X-squared = 5.3799, df = 2, p-value = 0.06789
	Less	12.5%	13.6%	11.5%	
	Same	85.3%	82.8%	87.8%	
Self-rated physical health, before pandemic	Excellent	12.1%	13.0%	11.3%	X-squared = 1.5322, df = 4, p-value = 0.8209
	Very good	33.1%	32.2%	33.3%	
	Good	33.9%	31.8%	35.7%	
	Fair	16.3%	17.2%	15.5%	
	Poor	3.2%	3.8%	3.3%	
	Missing	1.4%	2.1%	1.0%	
Regular treatment for physical illness, before pandemic	Yes	19.5%	18.4%	20.2%	X-squared = 0.0008792, df = 1, p-value = 0.9763
	Missing	11.6%	14.6%	7.0%	
Continuation of treatment during pandemic	More	1.0%	1.8%	-	X-squared = 5.7522, df = 2, p-value = 0.05635
	Less	14.1%	14.3%	14.4%	
	Same	85.0%	83.9%	85.6%	
*<.05, **<.01, ***<.001; †Overtime/negative hours , is a concept uncommon in the UK.					

Table 2. Results from Analysis of Deviance on Poisson regression model showing the effects of differences between countries (UK and Germany) and time points (before and during the pandemic) on a set of different variables.

	Df	Deviance	Resid. Df	Resid. Dev	Pr(>Chi)
Exercise and time spent outside					
NULL			3103	1856.4	
Exercise/Time spent outside	1	331.95	3102	1524.4	2.20E-16
Country	1	6.02	3101	1518.4	0.01413
Time Point	1	0.12	3100	1518.3	0.72653
Country x Time Point	1	0.49	3099	1517.8	0.48265
Exercise/Time spent outside x Country	1	16.03	3098	1501.7	6.24E-05
Exercise/Time spent outside x Time Point	1	4.21	3097	1497.5	0.04024
Exercise/Time spent outside x Country x Time Point	1	0.60	3096	1496.9	0.43926
Sleep during the week and the weekend					
NULL			3097	562.64	
Sleep	1	27.53	3096	535.11	1.55E-07
Country	1	0.25	3095	534.85	0.6158
Time Point	1	0.11	3094	534.74	0.7401
Country x Time Point	1	0.02	3093	534.73	0.8995
Sleep x Country	1	0.02	3092	534.71	0.8959
Sleep x Time Point	1	0.53	3091	534.18	0.4678
Sleep x Country x Time Point	1	0.20	3090	533.99	0.6569
Media consumption					
NULL			6173	2934.8	
Media consumption	3	1069.36	6170	1865.4	2.20E-16
Country	1	2.22	6169	1863.2	0.1366
Time Point	1	41.55	6168	1821.7	1.15E-10
Country x Time Point	1	0.99	6167	1820.7	0.3195
Media consumption x Country	3	52.80	6164	1767.9	2.02E-11
Media consumption x Time Point	3	2.09	6161	1765.8	0.5544
Media consumption x Country x Time Point	3	2.60	6158	1763.2	0.4572
Substance consumption					
NULL			6174	9353.8	
Substance consumption	3	4047.50	6171	5306.2	2.20E-16
Country	1	0.20	6170	5306.1	0.6889
Time Point	1	1.20	6169	5304.9	0.2667
Country x Time Point	1	0.40	6168	5304.4	0.5126
Substance consumption x Country	3	33.70	6165	5270.8	2.33E-07
Substance consumption x Time Point	3	2.00	6162	5268.8	0.5734
Substance consumption x Country x Time Point	3	0.30	6159	5268.4	0.9569
Mental well-being					
NULL			15452	8116.7	
Mental well-being	9	919.78	15443	7196.9	2.20E-16

Country	1	0.17	15442	7196.7	0.6817
Time Point	1	59.39	15441	7137.3	1.29E-14
Country x Time Point	1	0.04	15440	7137.3	0.835
Mental well-being x Country	9	63.10	15431	7074.2	3.37E-10
Mental well-being x Time Point	9	397.26	15422	6676.9	2.20E-16
Mental well-being x Country x Time Point	9	7.77	15413	6669.1	0.5575

Table 3. Results for two different logistic regression models, investigating the association between demographic variables, variables of substance use, media use and sleep (A) as well as COVID19 impact (B) and the psychological symptoms (SCL dimensions) as well as global mental health status (GSI).

	Global Symptom Index			Depressive Symptoms			Dythymic Symptoms			Agoraphobic Symptoms			Vegetative Symptoms			Symptoms of Mistrust			Sociophobic symptoms			
	E.S.	z-val.	p-val.	E.S.	z-val.	p-val.	E.S.	z-val.	p-val.	E.S.	z-val.	p-val.	E.S.	z-val.	p-val.	E.S.	z-val.	p-val.	E.S.	z-val.	p-val.	
A																						
(Intercept)	0.020	0.026	0.979	0.610	1.156	0.248	0.501	1.084	0.278	-0.024	-0.033	0.973	0.279	0.297	0.767	0.316	0.527	0.598	0.965	1.619	0.105	
Country of residence: Germany	-0.362	-2.033	0.042	-0.346	-2.803	0.005	-0.562	-5.269	0.000	-0.928	-5.391	0.000	-0.115	-0.509	0.611	0.223	1.513	0.130	-0.297	-2.122	0.034	
Gender: Female	0.468	2.179	0.029	0.344	2.444	0.015	0.314	2.504	0.012	0.527	2.408	0.016	0.638	2.223	0.026	-0.043	-0.295	0.768	0.497	2.891	0.004	
Age	-0.008	-1.186	0.235	-0.002	-0.373	0.709	-0.006	-1.371	0.170	-0.006	-0.943	0.346	-0.015	-1.730	0.084	-0.002	-0.327	0.744	-0.025	-4.423	0.000	
Highest education	-0.089	-1.569	0.117	-0.121	-3.142	0.002	0.001	0.016	0.987	-0.113	-2.087	0.037	-0.190	-2.829	0.005	-0.094	-2.117	0.034	-0.071	-1.573	0.116	
Alcohol consumpt.	-0.003	-0.092	0.927	0.049	1.922	0.055	0.006	0.266	0.790	0.027	0.748	0.454	-0.006	-0.126	0.900	0.005	0.168	0.867	-0.011	-0.397	0.336	
Tobacco consumpt.	-0.017	-0.386	0.700	-0.004	-0.138	0.890	0.015	0.624	0.533	-0.010	-0.245	0.807	-0.069	-1.217	0.224	-0.028	-0.832	0.406	-0.007	-0.207	0.429	
Vaping consumpt.	0.076	1.237	0.216	0.037	0.753	0.451	0.048	1.166	0.244	-0.024	-0.300	0.764	0.049	0.615	0.538	0.045	0.777	0.437	0.044	0.791	0.277	
Marihuana consumpt.	0.125	2.018	0.044	0.083	1.737	0.082	0.076	1.827	0.068	0.067	0.975	0.330	0.128	1.625	0.104	0.085	1.544	0.123	0.060	1.098	0.277	
Social media usage	0.173	1.975	0.048	0.053	0.874	0.382	0.081	1.521	0.128	0.132	1.559	0.119	0.133	1.241	0.215	0.089	1.280	0.201	-0.038	-0.529	0.597	
Video Games	0.138	1.536	0.125	0.127	2.015	0.044	0.087	1.516	0.130	0.033	0.371	0.711	0.081	0.680	0.497	0.091	1.187	0.235	0.138	1.920	0.055	
Print media usage	-0.122	-1.392	0.164	0.013	0.216	0.829	-0.096	-1.734	0.083	-0.024	-0.286	0.775	-0.092	-0.823	0.411	-0.103	-1.422	0.155	-0.027	-0.393	0.695	

	E.S.	Z-val.	p-val.	E.S.	Z-val.	p-val.	E.S.	Z-val.	p-val.	E.S.	Z-val.	p-val.	E.S.	Z-val.	p-val.	E.S.	Z-val.	p-val.	E.S.	Z-val.	p-val.
Sleep during the week	-0.547	-3.207	0.001	-0.503	-4.264	0.000	-0.201	-1.855	0.064	0.006	0.034	0.973	-0.324	-1.432	0.152	-0.308	-2.247	0.025	-0.474	-3.648	0.000
Sleep during the weekend	0.065	0.421	0.674	0.101	0.936	0.349	-0.051	-0.499	0.618	-0.126	-0.759	0.448	-0.350	-1.713	0.087	-0.047	-0.369	0.712	0.157	1.305	0.197
Exercise	0.051	0.692	0.489	-0.048	-0.961	0.336	-0.058	-1.300	0.194	-0.007	-0.099	0.921	-0.021	-0.236	0.813	0.054	0.964	0.335	0.033	0.578	0.563
Time spent outside	-0.163	-2.210	0.027	-0.113	-2.257	0.024	-0.088	-1.981	0.048	-0.159	-2.199	0.028	0.064	0.702	0.483	-0.133	-2.353	0.019	-0.096	-1.659	0.099
B																					
(Intercept)	-1.930	-2.665	0.008	-0.500	-1.040	0.298	-0.861	-1.973	0.048	-1.326	-1.886	0.059	-2.160	-2.521	0.012	-1.092	-2.034	0.042	-1.688	-2.902	0.000
Country of residence: Germany	-0.588	-3.134	0.002	-0.521	-4.047	0.000	-0.608	-5.534	0.000	-1.115	-6.274	0.000	-0.452	-1.995	0.046	0.006	0.040	0.968	-0.169	-1.129	0.259
Gender: Female	0.144	0.692	0.489	0.090	0.659	0.510	0.178	1.455	0.146	0.445	2.048	0.041	0.431	1.609	0.108	-0.271	-1.928	0.054	0.268	1.575	0.144
Age	-0.014	-2.019	0.044	-0.002	-0.395	0.693	-0.010	-2.786	0.005	-0.008	-1.291	0.197	-0.014	-1.819	0.069	-0.002	-0.499	0.618	-0.025	-4.555	0.000
Highest education	0.003	0.056	0.955	-0.061	-1.503	0.133	0.051	1.332	0.183	-0.050	-0.846	0.397	-0.073	-1.019	0.308	-0.067	-1.436	0.151	0.023	0.471	0.638
Concerned about life stability	0.134	2.021	0.043	0.201	4.365	0.000	0.142	3.553	0.000	0.087	1.330	0.183	0.215	2.786	0.005	0.148	2.795	0.005	0.092	1.726	0.084
Hopeful for an end of COVID19	-0.093	-1.309	0.190	-0.116	-2.297	0.022	-0.058	-1.350	0.177	-0.207	-3.021	0.003	-0.066	-0.755	0.450	-0.041	-0.710	0.478	-0.025	-0.446	0.655
Financial Impact: Yes	0.015	0.207	0.836	-0.075	-1.430	0.153	-0.010	-0.236	0.813	0.086	1.244	0.213	-0.074	-0.829	0.407	0.000	-0.006	0.995	-0.062	-1.029	0.303
Work-changes -	0.167	0.840	0.401	-0.080	-0.601	0.548	-0.126	-1.085	0.278	-0.130	-0.687	0.492	-0.026	-0.105	0.916	0.231	1.510	0.131	-0.003	-0.020	0.984

Table 4. Results for two different logistic regression models, investigating the association between demographic variables, variables of substance use, media use and sleep (A) as well as COVID19 impact (B) and the total Schizotypal Personality Score (Total SPQ) as well as its dimensions.

	Total SPQ			Eccentricity			Paranoid Ideation			Social Anhedonia			Anomalous Experiences & Beliefs			Distorted Speech			Social Anxiety			
	E.S.	z-val.	p-val.	E.S.	z-val.	p-val.	E.S.	z-val.	p-val.	E.S.	z-val.	p-val.	E.S.	z-val.	p-val.	E.S.	z-val.	p-val.	E.S.	z-val.	p-val.	
A																						
(Intercept)	3.354	33.588	<2e-16	1.155	3.831	0.000	1.631	6.174	0.000	2.585	12.295	<2e-16	0.415	1.648	0.099	1.129	4.317	0.000	1.865	8.615	<2e-16	
Country of residence: Germany	0.026	1.077	0.282	0.001	0.017	0.986	0.370	5.506	0.000	-0.004	-0.087	0.931	0.350	5.462	0.000	-0.089	-1.415	0.157	-0.270	-5.281	0.000	
Gender: Female	0.017	0.684	0.494	-0.335	-4.639	0.000	0.083	1.236	0.216	-0.273	-5.393	0.000	0.164	2.646	0.008	0.077	1.152	0.249	0.354	5.953	0.000	
Age	-0.003	-3.875	0.000	-0.009	-3.219	0.001	-0.009	-3.909	0.000	0.001	0.397	0.692	0.006	3.126	0.002	-0.005	-2.008	0.045	-0.009	-4.598	0.000	
Highest education	-0.077	10.421	<2e-16	-0.042	-1.851	0.064	-0.114	-5.958	0.000	-0.090	-5.836	0.000	-0.093	-5.220	0.000	-0.052	-2.696	0.007	-0.048	-2.975	0.003	
Alcohol consumpt.	-0.020	-4.154	0.000	-0.020	-1.370	0.171	-0.017	-1.370	0.171	-0.038	-3.712	0.000	0.000	-0.035	0.972	-0.003	-0.220	0.826	-0.031	-2.962	0.003	
Tobacco consumpt.	0.014	2.652	0.008	0.020	1.236	0.217	0.031	2.429	0.015	-0.006	-0.524	0.600	0.043	3.763	0.000	0.009	0.692	0.489	-0.009	-0.695	0.487	
Vaping consumpt.	0.045	4.716	0.000	0.121	5.057	0.000	0.035	1.334	0.182	0.027	1.216	0.224	0.008	0.299	0.765	0.066	2.830	0.005	0.039	1.852	0.064	
Marihuana consumpt.	0.038	3.706	0.000	0.027	0.879	0.380	0.040	1.516	0.130	0.009	0.404	0.686	0.049	2.018	0.044	0.053	2.055	0.040	0.042	1.918	0.055	
Social media usage	0.043	3.745	0.000	-0.013	-0.356	0.721	0.091	2.985	0.003	0.037	1.488	0.137	0.069	2.466	0.014	0.066	2.187	0.029	0.010	0.384	0.701	
Video Games	0.143	11.585	<2e-16	0.260	7.429	0.000	0.143	4.380	0.000	0.147	5.730	0.000	0.026	0.755	0.450	0.133	4.097	0.000	0.154	5.892	0.000	
Print media usage	-0.053	-4.416	0.000	-0.057	-1.542	0.123	-0.116	-3.669	0.000	-0.102	-3.931	0.000	0.049	1.666	0.096	-0.070	-2.203	0.028	-0.032	-1.259	0.208	
Sleep during the week	-0.056	-2.391	0.017	-0.134	-1.895	0.058	-0.125	-2.047	0.041	-0.075	-1.485	0.137	0.002	0.034	0.973	0.041	0.653	0.514	-0.072	-1.455	0.146	
Sleep during the weekend	-0.055	-2.526	0.012	-0.019	-0.289	0.773	-0.079	-1.388	0.165	-0.124	-2.637	0.008	-0.014	-0.261	0.794	-0.120	-2.038	0.042	0.018	0.380	0.704	
Exercise	-0.013	-1.342	0.180	-0.004	-0.151	0.880	0.015	0.617	0.537	-0.040	-1.987	0.047	0.012	0.557	0.578	-0.014	-0.555	0.579	-0.020	-0.955	0.340	

	E.S.	z-val.	p-val.	E.S.	z-val.	p-val.	E.S.	z-val.	p-val.	E.S.	z-val.	p-val.	E.S.	z-val.	p-val.	E.S.	z-val.	p-val.				
Time spent outside	-0.048	-5.125	0.000	-0.005	-0.182	0.855	-0.034	-1.354	0.176	-0.062	-3.067	0.002	-0.052	-2.288	0.022	-0.029	-1.148	0.251	-0.073	-3.517	0.000	
B																						
(Intercept)	2.196	23.994	<2e-16	-0.218	-0.775	0.438	0.426	1.779	0.075	1.034	5.365	0.000	-0.347	-1.560	0.119	0.424	1.755	0.079	0.529	2.605	0.009	
Country of residence: Germany	0.034	1.390	0.164	0.017	0.230	0.818	0.380	5.518	0.000	0.002	0.033	0.974	0.327	5.163	0.000	-0.078	-1.240	0.215	-0.244	-4.709	0.000	
Gender: Female	-0.087	-3.623	0.000	-0.535	-7.733	0.000	-0.009	-0.145	0.885	-0.373	-7.715	0.000	0.106	1.775	0.076	-0.035	-0.547	0.584	0.265	4.568	0.000	
Age	-0.007	-8.805	< 2e-16	-0.010	-4.415	0.000	-0.014	-6.760	0.000	-0.004	-2.675	0.007	0.006	3.450	0.001	-0.008	-4.156	0.000	-0.013	-7.412	0.000	
Highest education	-0.063	-7.982	0.000	-0.050	-2.027	0.043	-0.099	-4.839	0.000	-0.067	-3.989	0.000	-0.106	-5.727	0.000	-0.033	-1.555	0.120	-0.016	-0.913	0.361	
Concerned about life stability	0.021	2.286	0.022	-0.005	-0.181	0.857	0.067	2.793	0.005	0.030	1.527	0.127	0.067	3.069	0.002	-0.045	-1.799	0.072	-0.001	-0.046	0.964	
Hopeful for an end of COVID19	-0.029	-2.990	0.003	-0.053	-1.762	0.078	-0.003	-0.108	0.914	-0.030	-1.457	0.145	-0.025	-1.081	0.280	-0.024	-0.951	0.342	-0.036	-1.762	0.078	
Financial impact: Yes	0.021	2.159	0.031	0.067	2.224	0.026	0.009	0.331	0.740	-0.029	-1.377	0.169	0.090	3.962	0.000	0.020	0.786	0.432	0.003	0.119	0.905	
Work-changes - Home Office: Yes	-0.067	-2.703	0.007	0.009	0.118	0.906	-0.089	-1.347	0.178	-0.038	-0.707	0.479	-0.001	-0.019	0.985	-0.082	-1.258	0.208	-0.151	-2.792	0.005	
Work-changes - Unpaid leave: Yes	-0.299	-4.071	0.000	-0.270	-1.138	0.255	-0.357	-1.835	0.066	-0.501	-2.805	0.005	-0.321	-1.884	0.060	-0.079	-0.457	0.648	-0.276	-1.788	0.074	
Work-changes - Lost job: Yes	-0.045	-0.765	0.444	-0.119	-0.630	0.529	0.076	0.542	0.588	-0.041	-0.318	0.750	-0.041	-0.294	0.769	0.151	1.043	0.297	-0.260	-1.913	0.056	
Work-changes - No change: Yes	0.080	2.690	0.007	0.139	1.502	0.133	0.036	0.453	0.650	0.144	2.306	0.021	0.115	1.643	0.100	-0.079	-0.963	0.335	0.096	1.497	0.134	

Impact on quality of family relations	0.075	5.591	0.000	0.103	2.476	0.013	0.058	1.643	0.100	0.068	2.396	0.017	0.113	3.436	0.001	0.073	2.074	0.038	0.051	1.797	0.072
Impact on quality of social relations	-0.010	-0.736	0.462	0.028	0.682	0.495	-0.052	-1.434	0.152	-0.089	-3.107	0.002	0.033	1.020	0.308	0.015	0.426	0.670	0.023	0.797	0.426
Physical health status	0.131	10.834	<2e-16	0.188	5.049	0.000	0.090	2.800	0.005	0.146	5.660	0.000	0.107	3.553	0.000	0.115	3.608	0.000	0.148	5.703	0.000
Mental health status	0.174	15.139	<2e-16	0.234	6.603	0.000	0.232	7.650	0.000	0.188	7.719	0.000	0.068	2.409	0.016	0.142	4.731	0.000	0.194	7.859	0.000