

1 **The impact of the COVID-19 pandemic on mental health in the general population – a comparison**  
2 **between Germany and the UK**

3

4 **Franziska Knolle<sup>1,2</sup>, Lisa Ronan<sup>2</sup>, Graham K. Murray<sup>2,3</sup>**

5 <sup>1</sup>Department of Neuroradiology, Klinikum rechts der Isar, TUM, München, Germany

6 <sup>2</sup>Department of Psychiatry, University of Cambridge, Cambridge UK

7 <sup>3</sup>Cambridgeshire and Peterborough NHS Foundation Trust, Cambridge, United Kingdom

8

9 **Acknowledgement**

10 We thank the participants of the study who contributed their time and further circulated the survey.

11 **Funding**

12 FK received funding from the European Union's Horizon 2020 [Grant number 754462].

13 **Conflict of Interest**

14 All authors declare no competing financial interests.

15 **Contributions**

16 FK: administration of the project, conceptualisation, methodology, formal analysis and writing  
17 (original draft, review and editing), administration of the project. LR: formal analysis, editing of  
18 manuscript. GKM: methodology, and writing (review and editing).

19 **Abstract**

20 In March 2020 the SARS-CoV-2infection (COVID-19) was declared a pandemic. In response to its  
21 world-wide outbreak radical measures were taken by governments across the world including  
22 curfew, quarantine, travel bans, social distancing, work place and school closures, etc, to reduce the  
23 transmission of the virus. These measures led to dramatic social and economic changes for the  
24 general population, in addition to the fears and worries related to the disease and its contraction.  
25 First studies report the impact of the pandemic on mental well-being of the general population  
26 showing increased levels of anxiety, stress and depression. In this study, we compare the impact of  
27 the pandemic on two European countries – the UK and Germany, which reported their first cases  
28 within a week. 241 residents of the UK and 541 residents of Germany filled in an online survey,  
29 including questions on COVID-19 exposure, impact on financial situation and work, substance and  
30 media consumption, self-reported mental and physical health, as well as including two clinical  
31 questionnaires, the general mental health Symptom Check List-27 (SCL-27) and the Schizotypal  
32 Personality Questionnaire. Data collection was completed between 27/04/20-31/05/20. We found  
33 distinct differences between the two countries. UK responders reported a stronger direct impact on  
34 their health, financial situation and their families. UK responders had higher clinical scores on the  
35 SCL-27, with a higher percentage being above cut-off. Interestingly, however, we found that German  
36 responders were less hopeful for an end of the pandemic and more concerned about their life-  
37 stability. Generally, we found that a younger age, being female, lower education, poorer mental and  
38 physical health before the pandemic, as well as more social media and substance consumption was  
39 associated with a higher clinical risk. As 25% of all responders report a subjective worsening of the  
40 general psychological symptoms and 20-50% of responders reaching the clinical cut-off for  
41 depressive, dysthymic and anxieties, future pandemics require a tailored intervention system to  
42 assist not only people vulnerable for mental health problems, but also large proportions of the  
43 general public.

## 44 Introduction

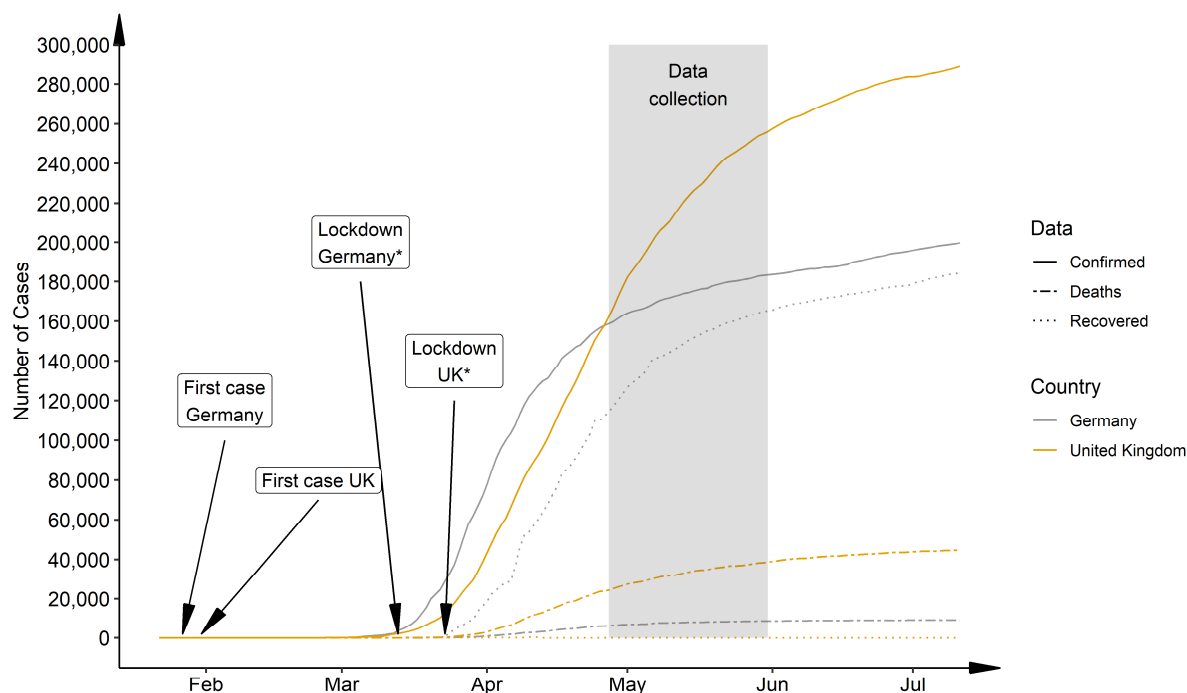
45 The world health organisation (WHO) declared the outbreak of the coronavirus disease 2019 SARS-  
46 CoV-2 (COVID-19) a pandemic on March 11, 2020. By that time, more than 118000 people had been  
47 confirmed to have conducted COVID-19 world-wide across 114 countries (WHO-Media-Briefing).  
48 China, where the virus was first discovered, had introduced a nationwide lockdown and curfew on  
49 January 23, 2020. With the rapid spread to Europe and other parts of the world, more countries  
50 introduced similar measures, including lockdown with school and work-place closures, self-isolation  
51 and social distancing, border closures, restrictions of travel, to reduce the transmission of the virus.

52 On March 18, 2020 the WHO published a statement presenting mental health and psychosocial  
53 considerations for the general public, acknowledging the potential impact of this public health  
54 emergency on mental health of the general population (WHO, 2020). As the COVID-19 outbreak  
55 compared to other recent pandemics or medical emergencies is larger in scale, its consequences are  
56 unprecedented and therefore more difficult to predict. It has however led to immediate and serious  
57 concerns on mental health of the whole society (Pfefferbaum and North, 2020) with calls for urgent  
58 and direct actions (Holmes et al., 2020). From former epidemics, as recently reviewed by Brooks and  
59 colleagues (Brooks et al., 2020), such as the 2003 epidemic of the severe acute respiratory syndrome  
60 (SARS) or the 2014 outbreak of Ebola, we know that quarantine, isolation and social distancing is  
61 related to anxiety, depression, stress, low mood, irritability, sleep disorders, etc. In the current  
62 pandemic, however, we have seen lock-down of entire countries for much longer periods of time.  
63 Increase of job insecurity and economic hardship (Evans-Lacko et al., 2013; Uutela, 2010), as well as  
64 domestic violence (Mazza et al., 2020; Usher et al., 2020), substance abuse (Volkow, 2020) and  
65 media consumption (Gao et al., 2020; Garfin et al., 2020) have been discussed as risk factors for  
66 worsening the impact on mental health. First studies provide findings on the impact of these  
67 stressors and dramatic changes in everyday life on the mental health of the general population (e.g.  
68 (Plomecka et al., 2020; Wang et al., 2020, 2003)) reporting increased levels of stress, anxiety,  
69 depressive symptoms, sleep disorders as well as an increase in suicidal ideation, etc.

70 In response to the outbreak and spread of the pandemic, different countries even within Europe  
71 followed different strategies. Germany went into lockdown rapidly and managed to control the  
72 increase of infections effectively, whereas the UK due to a delayed lockdown faced a much higher  
73 plateau (see Figure 1)(Balmford et al., 2020) which also led to an increase in numbers of deaths that  
74 were at the end of April 2020 20% higher than predicted, whereas Germany was nearly 3% lower  
75 than expected. Balmford and colleagues (2020) used epidemiological models to estimate the “price  
76 of life” that various nation were willing to pay in order to protect their populations. They estimated

77 at the end of April that the German government was prepared to pay a factor of 10 more per life  
78 than the UK. It is to be expected that these different strategies and governmental responses have an  
79 impact on the nation's mental well-being. We were therefore interesting in comparing the mental  
80 health impact of the pandemic on the general population of the UK and Germany, using an online  
81 survey investigating the impact on life circumstances and assessing mental health with two different  
82 psychological questionnaires (Symptom Check List, SCL-27; Schizotypal Personality Questionnaire,  
83 SPQ). We hypothesised that responders of both nations, UK and Germany, would report an increase  
84 in psychological symptoms, but that the increase would be stronger in UK responders. We  
85 supplemented the general mental health questionnaire SCL-27 with the SPQ, as we reasoned that a  
86 potential increase in anxiety and distress could be accompanied by an increase in psychotic-like  
87 experiences (Murray and Jones, 2012) that could be captured in the SPQ.

88



89

90 Figure 1. National progression of COVID-19 cases, deaths and recoveries comparing Germany and  
91 the UK from Jan. 22,2020 – Jul. 11,2020. Recovery rate UK: after April 12., 2020 recovered cases are  
92 not reported for the UK. \*Germany followed a state-wise lockdown, with the first state going in lock-  
93 down on Mar.13,2020 and the last state on the Mar. 16, 2020. UK announced nationwide lockdown  
94 on Mar.23, 2020. Data taken from 2019-nCoV Data Repository by JHU CSSE.

95

96

## 97 **Methods**

### 98 *Study design and procedure*

99 The questionnaire assessing mental and physical health and COVID-19 exposure was designed as an  
100 online survey using EvaSys (<https://www.evasys.de>, Electric Paper Evaluationssysteme GmbH,  
101 Luneburg, Germany), a software suitable for the generation of surveys with a highly secure data  
102 protection. The questionnaire was available in German and English. Initial advertisement for the  
103 study was made via social (facebook, twitter, newsletters, WhatsApp) and print media  
104 (Sueddeutsche Zeitung) following the snowball sampling strategy to reach the general public. Data  
105 collection took place from 27/04/2020 -31/05/2020. The completion of the survey took  
106 approximately 35 min. Participation was fully voluntary. Participants did not receive any  
107 compensation.

108 Ethical approval was obtained from the Ethical Commission Board of the Technical University  
109 Munich (250/20 S). All respondents included in the analyses provided informed consent.

110

### 111 *Outcome*

112 The survey consisted of three main parts. The first part, partially comprised of the Coronavirus  
113 Health Impact Survey (CRISIS, <http://www.crisissurvey.org/>), which assessed (a) demographics, (b)  
114 COVID-19 exposure (infection status, symptoms, contact), (c) mental and physical health questions.  
115 In the second part, we assessed the general mental health status using the Symptom Check List (SCL)  
116 with 27 items (Hardt et al., 2011; Hardt and Gerbershagen, 2001). Here, we assessed (d) depressive,  
117 dysthymic, vegetative, agoraphobic and socio-phobic symptoms, as well as symptoms of mistrust.  
118 For all SCL-symptom measures we recorded (e) a subjective rating of change during the pandemic  
119 compared to before the pandemic. Using the SCL-27, we furthermore measured (f) a global severity  
120 of symptom index (GSI-27). In the third part, we evaluated schizotypic symptoms using the  
121 Schizotypy Personality Questionnaire (SPQ, (Raine, 1991)) assessing (g) the subscales anomalous  
122 experiences and beliefs (AEB), social Anhedonia (SAnh), paranoid ideation (PI), social anxiety (SAnx),  
123 eccentricity (Ecc), and disorganised speech (DS) (Davies, 2017), as well as the total score (SPQ-total).  
124 As for the SCL-27, also for the SPQ we evaluated (h) a subjective measure for change during  
125 compared to before the pandemic.

126

### 127 *Statistical analysis*

128 Statistical analysis and visualisations were computed using R (RStudio Team (2020). RStudio:  
129 Integrated Development for R. RStudio, PBC, Boston, MA URL <http://www.rstudio.com/>). We  
130 present a description of the whole sample, but concentrate in our statistical analysis on the  
131 comparison of Germany and the United Kingdom (UK) with regard to the outcome measure. We first  
132 describe demographics and COVID-19 exposure variables, using frequency analysis. For the country  
133 comparison we used a chi-square test to explore differences between the groups on the  
134 demographics and the COVID-19 exposure variables.

135 To further explore the differences between the UK and Germany, we generated a logistically  
136 normalised Poisson regression model with the between-subject factor country (UK, Germany) and  
137 time (before and during the pandemic) and the Crisis-mental and physical wellbeing questions as  
138 with-in subject factor. We organised the mental and physical health questions in five groups – sleep,  
139 mental health, exercise/outdoor activities, media consumption, and substance and alcohol  
140 consumption. The overall effects of each predictor within the model are analysed using an ANOVA  
141 Chi-square test.

142 To identify possible predictors for worse or better functioning, we furthermore applied multivariate  
143 Poisson regression models to assess the associations between the outcome and the predictor  
144 variables. Our outcome variables were continuous scores measured using the SCL-27 and the SPQ.  
145 We investigated total score (SPQ-total, GSI-27) as well as subscales for the SPQ and the SCL-27.

146 In order to generate the overview figure showing the progression of the COVID-19 cases, deaths and  
147 recoveries, we pulled the data from the 2019 Novel CoronaVirus CoViD-19 (2019-nCoV) Data  
148 Repository by Johns Hopkins University Center for Systems Science and Engineering (JHU CSSE)  
149 (<https://github.com/CSSEGISandData/COVID-19>) on Jul. 11, 2020.

150

151

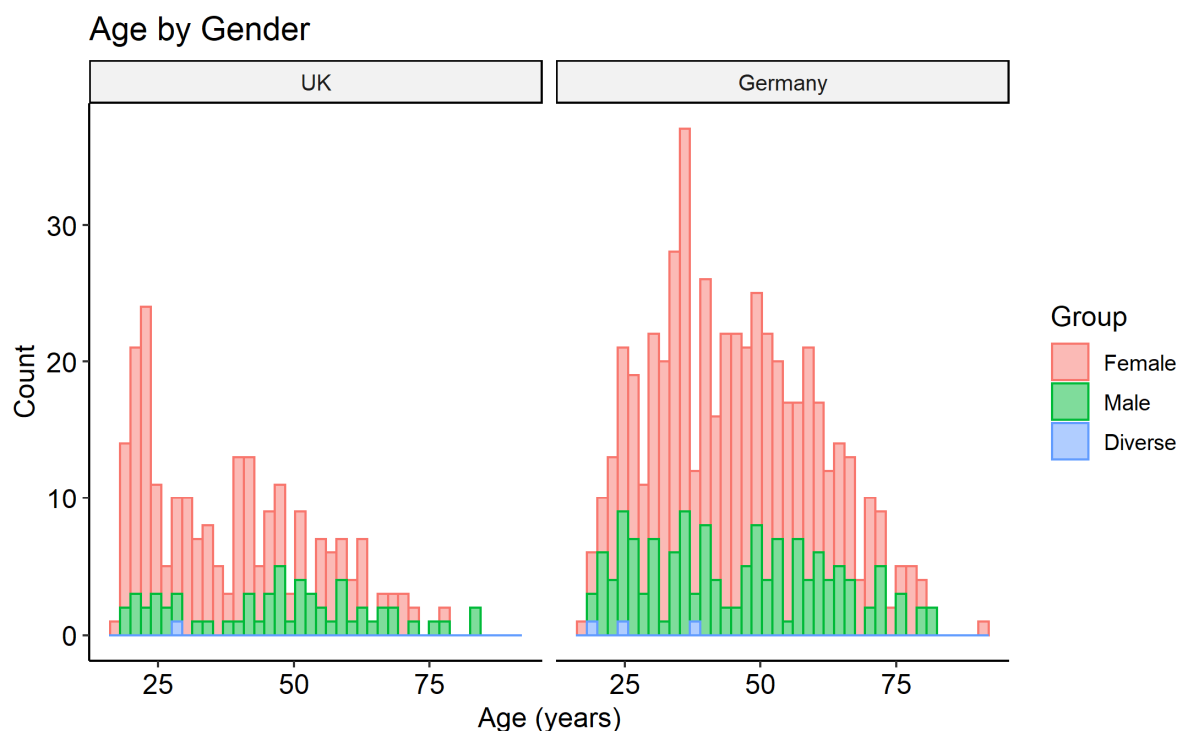
152 **Results**

153 *Whole Sample Description*

154 The survey was complete by 860 participants, two of which did not consent to the participation.  
155 They were excluded for further analysis. Furthermore, 6 participants did not consent to sharing the  
156 data publicly, and will be removed from the open access data set, but are included in the analysis of  
157 this study.

158 The majority of respondents were female (71.6%), 25.4% were male, 0.5% diverse and 2.5% did not  
159 provide the information. The age ranged from 18 to 92 years, with a mean 43.27 (SD 15.4) years and  
160 a median of 41 years. The majority of participants were well educated 60.1% had a master degree or  
161 higher, and 23.4% had completed a professional college or a bachelor degree. 47.3% reported to live  
162 in large cities, 12% in suburbs of large cities, 19.2% in small cities, 15.3% in towns or villages, and  
163 5.7% in rural areas (0.5% NA). People from 21 countries of residence completed the questionnaire,  
164 with 27.9% living in the UK, 63.1% living Germany and 3.2% living in the USA, the remaining 5.8%  
165 were living in other countries Europe, in Latin American countries, Asian countries, Australia and  
166 Canada. Details are described in Table 1.

167



168 Figure 2. Distribution of age by gender for the UK and Germany separately.  
169

170

171

172 *Demographics of Germany and the UK*

173 In this paper we focus on the comparison of respondents resident in the UK (N=239) and in Germany  
174 (N=541). All descriptive and statistical results are described in Table 1. The UK sample was younger  
175 (UK: 39.01yrs, GER: 45.36yrs; Figure 2). Both samples had more female responders (UK:73.6%, GER:  
176 71.2%). The UK sample had fewer children at home than the German sample. The two samples  
177 differed in education (Supplementary Figure 1), with UK respondents having more bachelor degrees.  
178 The difference in education and children might possibly due to the age difference of the two samples  
179 as we found using Kruskal-Wallis Test that age significantly predicted both (children: Kruskal-Wallis  
180 chi-squared = 7.4601, df = 1, p-value = 0.006308; education: Kruskal-Wallis chi-squared = 100.04, df  
181 = 7, p-value < 2.2e-16).

182

183 *COVID-19 Exposure, Impact and Personal Judgement*

184 To explore differences between the countries we used chi-square tests. All results are presented in  
185 Table 1.

186 In our study, we found infection rates of 2.5% in the British sample and about 1 % in the German  
187 sample (Suppl. Fig. 2). Of those who had symptoms with and without a diagnosed infection, most  
188 participants suffered from *fatigue* (UK:28.5%; GER:27.7%) and *cough* (UK:21.3%; GER:15.5%)(Suppl.  
189 Fig. 3). 9.8% of the German responders compared the 3.3% of the UK responders had contact to  
190 people with a positive test, whereas 5.4% of UK responders compared to only 0.6% of German  
191 responders had contact to people with a positive diagnosis, without a test (Suppl. Fig. 4). All findings  
192 are presented in Table 1, COVID19 exposure.

193 The impact on the personal work situation was similar between the two countries. 50.6% of the UK  
194 and 46.8% respondents had been moved to work in home office. 2.9% of the UK responders and  
195 3.6% of the German responders had lost their job; and 13.0% compared to 17.4% reported no  
196 impact on their work situation (Suppl. Fig. 5). The impact on the families of the responders was  
197 different between the two countries; only 49.9% of the UK responders reported no impact,  
198 compared to 71.9% of the German responders. 10.5% of the UK compared to 4.4% of the German  
199 responders reported infections in the family; 3.8% compared to 0.4% reported cases death, 26.4% to  
200 12.6% reported cases reduced working hours, and 10.9% to 4.4% reported cases of family members  
201 losing jobs. UK responders reported a stronger financial impact, compared to German responders.  
202 For 46% of the UK responders compared the 58.8% of the German responders reported no impact,



203 whereas 35.1% of the UK and 25.6% of the German responders reported a slight or moderate impact  
204 and 18.8% and 15% a big or extreme impact. All findings are presented in Table 1, Impact on work  
205 and financial situation.

206 In general the restrictions were rated similarly stressful between the two countries. 11.3% of the UK  
207 and 14.8% of the German responders considered them as not stressful at all; whereas 54.8% of the  
208 UK and 54.4% of the German responders found them slightly or moderately stressful; and 33.5% and  
209 30.9% very or extremely stressful. UK responders were less concerned about their overall life  
210 stability with 46.4% compared to 30.5% of the German responders being not all concerned; 36.4%  
211 compared to 54.1% being slightly or moderately concerned; and 15.9% compared to 24% being very  
212 or extremely concerned. UK responders were also more hopeful that the pandemic in their region  
213 would soon be under control, with 32.7% compared to 17.1% of the German responders being very  
214 or extremely hopeful; 52.8% compared to 65% being slightly or moderately hopeful; and 14.2%  
215 compared to 17.9% being not at all hopeful. All findings are presented in Table 1, Personal  
216 judgement of the situation.

217 UK responders rated their mental health status differently compared to the German responders.  
218 36% of the UK responders compared to 52.3% of the German responders reported very good or  
219 excellent mental health; 51.4% compared to 42.9% reported good or fair mental health; and 11.3%  
220 compared to 3.3% reported poor mental health. Also more UK responders received regular  
221 treatment for their mental illnesses before the pandemic (17.6% compared to 10.1%). The treatment  
222 was continued similarly during the pandemic across the two countries. 3.6% of the UK responders  
223 compared to 1% of the German responders received more treatment, 13.6% compared to 11.5% less  
224 and 82.8% compared to 87.8% the same as before the pandemic. Physical health was judged  
225 similarly across the two countries. 45.2% of the UK responders and 44.6% of the German responders  
226 reported excellent or very good physical health. 49% of the UK and 51.2% of the German responders  
227 reported good or fair physical health; 3.8% compared to 3.3% reported poor physical health. Regular  
228 treatment for physical illnesses was similar between the two countries (UK:18.4%; Germany: 20.2%)  
229 and the treatment continued in a similar fashion, with 1.8% of UK responders compared to 0% of  
230 German reporting more, 14.3% compared to 14.4% reporting less, and 83.9% compared to 85.6%  
231 reporting about the same amount of treatment during the pandemic. All findings are presented in  
232 Table 1, Mental and physical health status.

233

234 *Self-report on sleep, mental health, exercise/outdoor activities, media consumption, and*  
235 *substance/alcohol consumption before and during the pandemic*

236 To explore the association between the outcome variables and the predictors (time point, i.e. before  
237 or during the pandemic, and country of residence, i.e. Germany and UK) we used a logistic  
238 regression model for a Poisson distribution and logistically normalised, all results are presented in  
239 Table 2.

240 For *exercise and time spent outside* there was an effect of the variable's levels (amount of exercise  
241 per week; amount of time spent outside per week) ( $p < 0.001$ ), effect of country of residence  
242 ( $p = 0.014$ ), variable's levels by country ( $p < 0.001$ ); and variable's levels by time point ( $p = 0.040$ ).  
243 Exercise and time spent outside varied by country of residence and its effect by the pandemic, but  
244 the countries do not change differently in response to the pandemic.

245 Regarding the variable *sleep*, sleeping patterns differ in weeks compared to weekends ( $p < 0.001$ ),  
246 but there were no significant effects of country or time point ( $p > 0.05$ ).

247 Analysing *media consumption*, distinct types of media (levels: social media, print media, video  
248 games) were consumed differently ( $p < 0.001$ ), and there was an effect of time point ( $p < 0.001$ ),  
249 showing that overall media was consumed differently before and during the pandemic. Additionally  
250 we found the responders of the two countries used media differently ( $p < 0.001$ ), though this  
251 difference was not affected by the time point.

252 For the *consumption of substances* including alcohol, different substances (levels: alcohol, tobacco,  
253 vaping, marijuana) were differently consumed ( $p < 0.001$ ) and that this consumption differed  
254 between the two countries ( $p < 0.001$ ). However, we did not find an effect of time point.

255 Regarding self-reported *mental well-being*, we found a difference between the individual levels of  
256 mental well-being (levels: happy-sad, concerned, anxious, lonely, agitated, tired/fatigued, negative  
257 thoughts, etc.) ( $p < 0.001$ ). There was an overall effect of time point ( $p < 0.001$ ) and these levels were  
258 differently affected by the time point ( $p < 0.001$ ). Responders from the two countries responded  
259 differently to the different levels of mental well-being ( $p < 0.001$ ). But we did not find that this  
260 difference was affected by the time point.

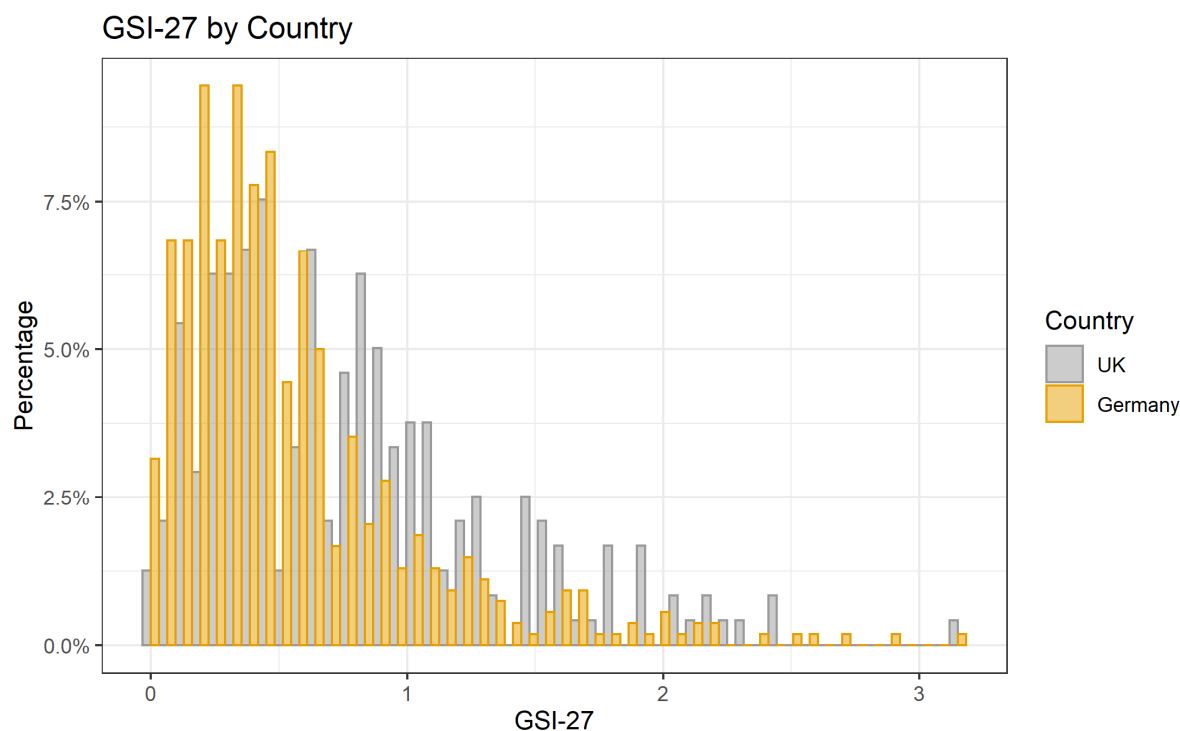
261

262 *Effects of the pandemic on psychological symptoms using the Symptom Check List – 27-Point (SCL-27)*

263 *General Symptom Index*

264 A Wilcoxon-test for non-parametric data, showed that the distribution of the GSI was different  
265 between the two countries ( $W = 84062$ ,  $p\text{-value} = 1.515e-11$ , 95%-confidence interval: 0.148-0.296;  
266 sample estimate for location difference: 0.222). See Figure 3.

267



268

269 Figure 3. Histogram of distribution of the global severity index based on 27 items (GSI-27) for  
270 psychological symptoms, separately shown for countries.

271

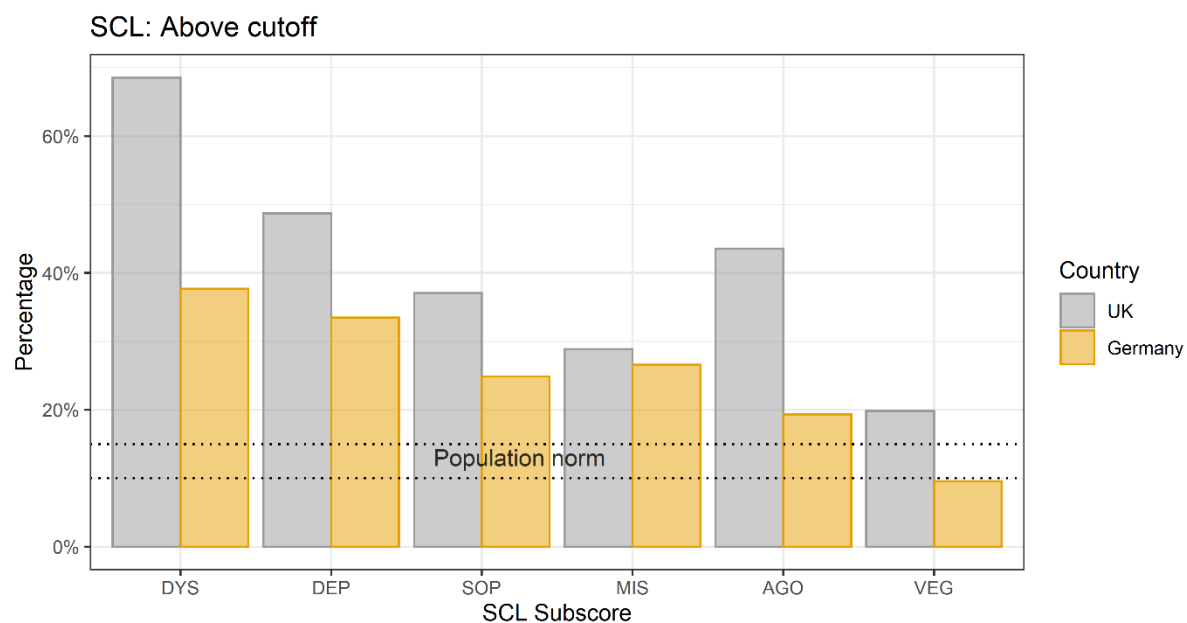
### 272 *Clinical cut-off for SLC sub-dimensions and subjective change*

273 In the general population (Hardt et al., 2004), 10-15% of the screened population reach the clinical  
274 cut-off on the different sub-dimensions, and require additional investigation. As shown in Figure 4,  
275 for the sub-dimension of dysthymic symptoms (DYS) 68.5% of the UK responders and 37.6% of the  
276 German responders lay above the clinical cut-off; for depressive symptoms it was 48.7% for the UK  
277 and 33.5% for the German responders; for symptoms of social phobia 37.1% for the UK and 24.9%  
278 for German responders; for symptoms of mistrust 28.9% for the UK and 26.6% for the German  
279 sample; for agoraphobic symptoms 43.5% UK and 19.3% for the German responders; and for the  
280 vegetative symptoms 19.8% for the UK and 9.6% for the German responders.

281 We furthermore recorded a subjective rating of change by asking responders on each question of  
282 the SCL-27, whether or not this feeling has stay the same, has increased or decreased during the  
283 pandemic. In the UK sample 27.0% of the responders reported an increase of symptoms, 3.6% a  
284 decrease and 64.1% reported that symptoms stayed the same; whereas in the German sample  
285 22.8% reported more symptoms, 2.5% less and 71.7% the same amount of symptoms (Figure 5).

286

287

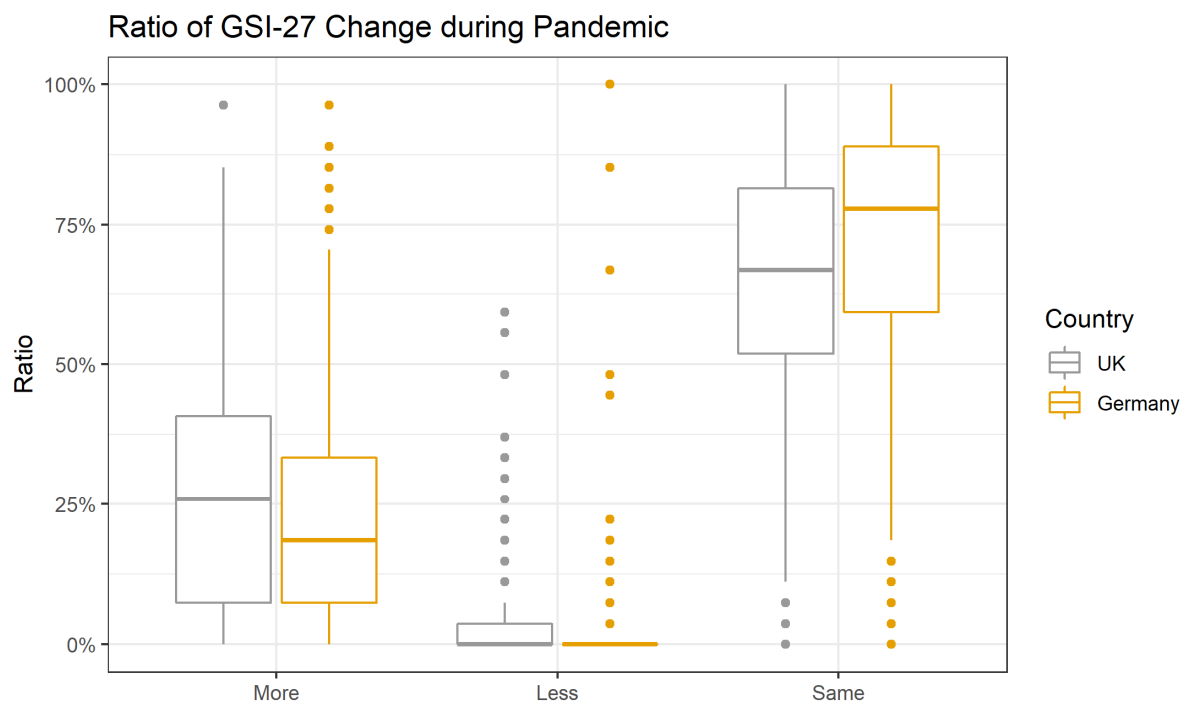


288

289 Figure 4. Percentage of responders above clinical cut-off separately for UK and Germany. Dotted  
290 lines represent the percentage of the norm population above threshold. DYS: dysthymic symptoms,  
291 DEP: depressive symptoms, SOP: symptoms of social phobia, MIS: symptoms of mistrust, AGO:  
292 agoraphobic symptoms, VEG: vegetative symptoms.

293

294



295

296 Figure 5. Boxplot shows the subjective change of global symptom index during the pandemic  
297 measured with the SCL, separately for Germany and the UK.

298

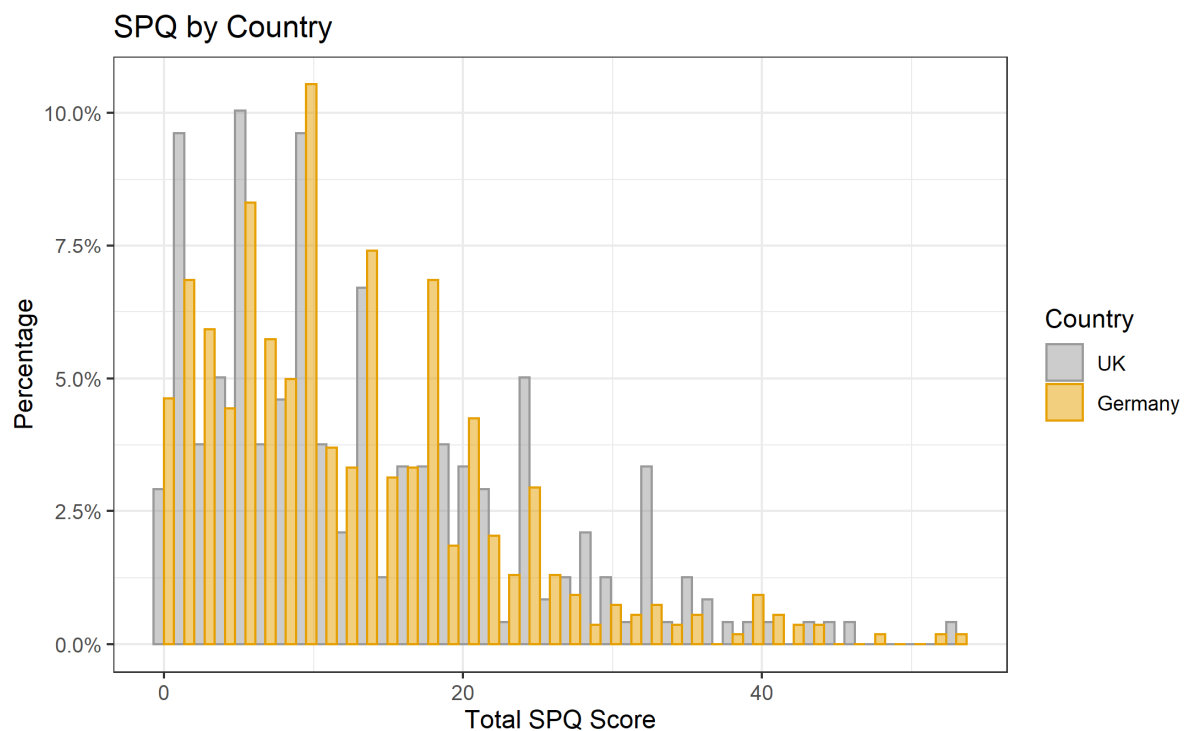
299 *Effects of the pandemic on the schizotypal personality traits using the Schizotypal Personality*  
300 *Questionnaire (SPQ)*

301 *Total SPQ and subject change during the pandemic*

302 Using a Wilcoxon-test for non-parametric data, we found that the distribution of the total SPQ-score  
303 was not different between the two countries ( $W=68110$ ,  $p\text{-value} = 0.23$ ). See Figure 6.

304 Also for the SPQ, we recorded a subjective rating of change by asking responders on each question,  
305 whether or not this feeling/situation has stay the same, has increased or decreased, or has occurred  
306 the first time during the pandemic. In the UK sample, 14.7% of the responders reported symptoms  
307 as before, 4.8% reported an increase, 1.2% a decrease and 4.4% an occurrence for the first time;  
308 similarly, in the German sample, 14.2% reported that symptoms stayed the same, 4.1% reported an  
309 increase, 1% a decrease and 3.5% an occurrence for the first time. See Figure 7.

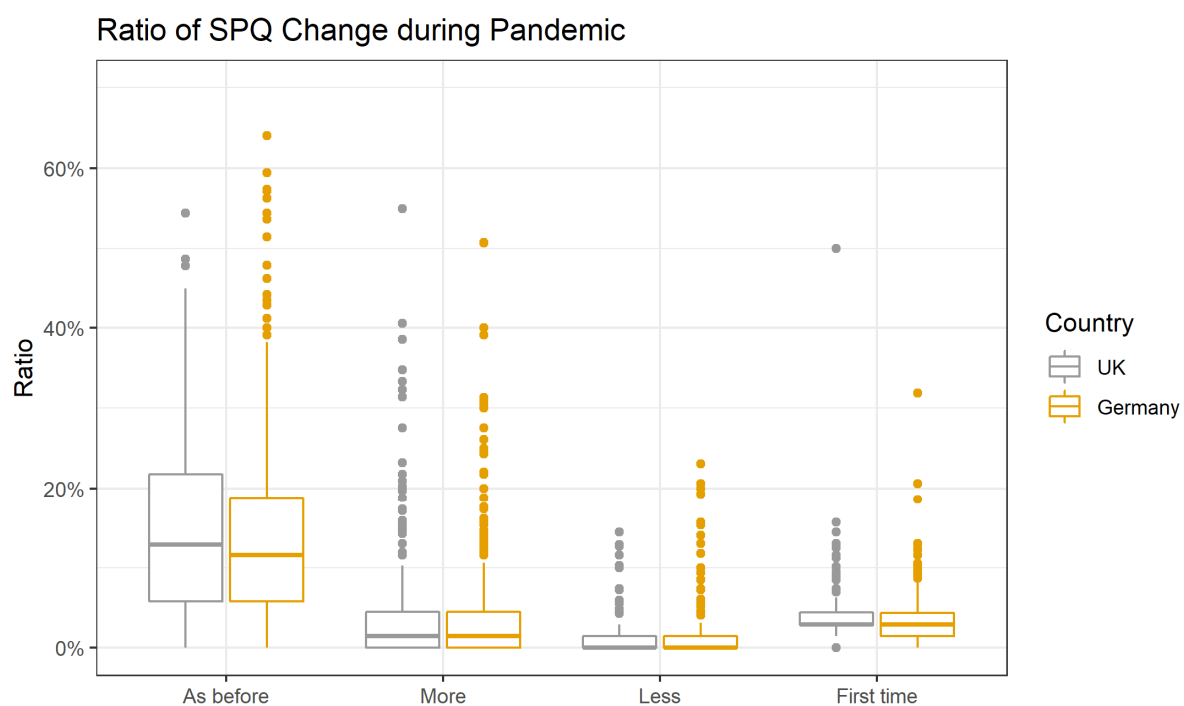
310



311

312 Figure 6. Histogram of distribution of the total schizotypal personality score (SPQ\_total), separately  
313 shown for countries.

314



315

316 Figure 7. Boxplot shows the subjective change of schizotypy symptoms during the pandemic  
317 measured with the SPQ-scale, separately for Germany and the UK.

318

319 *Association between demographic variables, variables of substance use, media use, sleep, and*  
320 *clinical scores*

321 In order to investigate predictive factors among demographic variables, variables describing  
322 exercise, sleep, etc, contributing to clinical scores we conducted two sets of logarithmically  
323 normalised multivariate Poisson regression analysis – one set using the GSI and the SCL-  
324 subdimensions as outcome variables, and the second set using total SPQ score and the  
325 subdimensions as outcome variables. All associations are described in Table 3A and Table4A. In  
326 summary for the GSI, we found that responders from Germany have a significantly lower GSI score;  
327 female responders are more strongly affected, as well as people with higher consumption rates of  
328 marihuana; people who use more social media. Interestingly, people who sleep more (>8h) during  
329 week nights have lower GSI scores as well as people who spend more time outside. The predictors  
330 and risk factors shift slightly depending on the different subdimensions, but the overall picture is  
331 similar.

332 Interestingly, for the total SPQ score, there was no association with country or gender, instead we  
333 saw a protective association with being older, as well as with having a better education. Apart from  
334 alcohol consumption, which has a protective association, increased use of tobacco, vaping and  
335 marihuana was associated with a higher SPQ scores, and so was the use of social media and video  
336 games. The increased use of print media however was associated with lower SPQ scores. Similarly to  
337 the associations with GSI, more sleep during the week and the weekend and more time spent  
338 outside had a protective association with the total SPQ.

339

340 *Association between COVID-19 impact measures, judgement as well as health, and clinical scores*

341 Again we conducted two sets of logarithmically normalised multivariate Poisson regression analyses  
342 – one set using the GSI and the SCL-subdimensions as outcome variables, and the second set using  
343 total SPQ score and the subdimensions as outcome variables. All associations are described in Table  
344 3B and Table4B respectively. People who were more concerned about their life stability showed a  
345 higher GSI. Unsurprising, but with a very strong effect, people who report poor mental health prior  
346 to the pandemic were more strongly affected; interestingly the same is true for people who  
347 reported low physical health. A protective association is seen for people whose quality of social  
348 relationships had not been affected much by the pandemic. Again a similar picture with some  
349 variations becomes apparent for the subdimensions. See Table3B.

350 For the total SPQ score, in this analysis, as opposed to the previous statistical model, female gender  
351 was associated with a higher risk. Whereas increased hopefulness for the pandemic to end in the  
352 near future was protective, the concern about life stability was a risk factor. People who have been  
353 more strongly financially impacted showed higher SPQ-total scores. As also seen for the GSI, people  
354 who reported poor mental health prior to the pandemic were more strongly affected; the same is  
355 true for people who reported low physical health. Interestingly, whereas working in a home office or  
356 being on unpaid leave has a protective effect on the SPQ-total, people who did not see any change in  
357 their workplace were also associated with higher total SPQ scores. See Table 4B.

358

359

360

361



## 362 Discussion

363 This study investigated the difference between the impact of the COVID-19 pandemic on the UK and  
364 Germany. The impact was assessed using an online survey including questions on the impact on life  
365 circumstances, as well as two psychological questionnaires, the Symptom Check List (SCL-27) and the  
366 Schizotypal Personality Questionnaire (SPQ). The data was collected over five weeks from April 27,  
367 2020 to Mai 31, 2020. We found that UK responders reported more infections and symptoms, a  
368 stronger financial hardship, and a stronger impact on health and the financial situation of family  
369 members. We found that responders of both countries reported an increase in psychological  
370 symptoms, especially depressive symptoms and anxieties. The global severity index (GSI) of the SCL  
371 was higher in UK responders compared to German responders. An alarming finding was that the  
372 percentage of people above clinical cut-off on the SCL-27 compared to a norm population had more  
373 than doubled for depressive, dysthymic and agoraphobic symptoms as well as for social phobias, and  
374 this increase was stronger in UK responders compared to German responders. We did not find  
375 differences in the SPQ or its subscales between the two countries. However, and similar to the SCL-  
376 27, even on this highly specified questionnaire, responders reported an increase of symptoms in  
377 about 9% with half of those reporting symptoms for the first time. Interestingly, despite the  
378 differences between the two countries UK responders were still more hopeful for a sooner end of  
379 the pandemic in their region, were less concerned about overall life stability and reported more  
380 positive changes due to the pandemic (e.g., time with the family, no commute, time for one-self).

381 In simple associative prediction models, we furthermore identified risk factors for the psychological  
382 impact of the pandemic. Being UK resident, female, younger, having a lower education, a worse pre-  
383 pandemic mental or physical health, as well as being more concerned about life stability, spending  
384 less time outside and reporting a stronger negative impact of the pandemic on the qualities of social  
385 contacts predicted higher scores of the GSI, as well as depressive, dysthymic symptoms as well as  
386 symptoms of anxiety. Higher scores on the SPQ total-score and its subdimensions were predicted by  
387 younger age, lower education, more substance (tobacco, vaping, marihuana) and media (social and  
388 video games), less sleep, less time spent outside, worse quality of social contacts, and a worse pre-  
389 pandemic mental and physical health.

390 To the best of our knowledge this is the first study showing a direct comparison of the psychological  
391 impact of the pandemic between two countries. There is one large scale study (N=13,332) reporting  
392 a world-wide assessment of the psychological impact of COVID-19 (Plomecka et al., 2020). This study  
393 identified prevalence and risk factors globally, but does not draw direct comparisons between  
394 different WHO-regions. Interestingly, however, Plomecka and colleagues (2020) report similar

395 overall risk factors as we report in our study, such as being female, younger, less optimistic, and  
396 having worse social relationships and pre-pandemic.

397 Other studies investigate the psychological impact of the pandemic with a national focus. Two  
398 longitudinal studies conducted in UK populations (Kwong et al., 2020; Pierce et al., 2020) show a  
399 general deterioration of mental health in April compared to before the pandemic. Both studies  
400 identify similar risk factors such as being female, younger of age and having pre-pandemic mental  
401 health conditions. The same is true for research conducted on German populations. A study by  
402 Bäuerle and colleagues (Bäuerle et al., 2020) reports an increase in anxiety, depression and  
403 psychological distress with females and younger adults reported a stronger impact. The same is  
404 being reported in a description of preliminary results in a second German cohort study (Jung et al.,  
405 2020).

406 Our study does not contain true pre-pandemic data. However, we assessed subjective measures of  
407 change questions on life circumstance and mental health question including the psychological  
408 questionnaires, asking participants to either report on that particular question three month ago or  
409 report whether the situation had changed compared to before the pandemic and whether  
410 symptoms had increased, decrease or stayed the same. In the UK population, we found a tripling of  
411 the percentage of people lying above cut-off compared to a norm population for depressive,  
412 dysthymic and agoraphobic symptoms, and a doubling on symptoms of social phobia and symptoms  
413 of mistrust. Similarly, Kwong and colleagues (2020) report a doubling of symptoms of anxiety in a UK  
414 sample. In the cohort of German responders in our study, we found a doubling for depressive and  
415 dysthymic symptoms, as well as for symptoms of social phobia and symptoms of mistrust. The  
416 increase in our study compared to Kwong et al (2020) might be due to the fact that the SCL-27 aims  
417 at a high sensitivity, but a low specificity on the individual symptoms. However, the higher rates  
418 compared to population norms is alarming, which is even higher in UK compared to German  
419 responders. Around 25% of the German and UK responders reported a subjective increase in  
420 symptoms on the SCL-27.

421 Overall, our results match those of countries in a global comparison (Plomecka et al., 2020) as well  
422 as to compared to individual countries such as China (Qian et al., 2020; Wang et al., 2020), Japan  
423 (Ueda et al., 2020), India (Kene, 2020; Kochhar et al., 2020), Italy (Rossi et al., 2020) or Spain  
424 (González-Sanguino et al., 2020; Ozamiz-Etxebarria et al., 2020). The comparison of the two  
425 countries is difficult, as we did not assess any pre-baseline characteristics of the two countries, and  
426 both countries vary on a large number of factors not accounted for in this study. However, the  
427 governments of both countries followed different strategies in responding to the pandemic, whereas

428 the German government implemented a prompt lock-down (Balmford et al., 2020), the British  
429 government first discussed herd-immunity (Sibony, 2020), causing a significant delay to implement  
430 the lock-down, which according to different predictive models has significantly increased the  
431 number of death in the UK (Balmford et al., 2020). It is likely that the burden of higher death rates  
432 and hospitalisations has increased the impact on mental well-being described in this study.

433 Interestingly, we find this dichotomy between a stronger financial and health impact of the  
434 pandemic on UK residents compared to German residents, and still a more optimistic judgment of  
435 the overall situation of the UK compared to the German residents. Further research would be  
436 needed to further investigate how pre-existing cultural attitudes contribute to these differences. We  
437 speculate there could be cultural differences in how likely people are to complain about their  
438 personal situation in a questionnaire, also there could be some linguistic difference in how these  
439 questions are understood by participants of the two countries. Another line of future enquiry could  
440 examine the role of such attitudes as the stereotypes of the British 'Keep calm and carry on' way of  
441 life (Storry and Childs, 2016) compared to the German stereotype of criticism and pessimism (Cliffe,  
442 2018).

443 Although the WHO provided general guidelines for countries to respond to the pandemic, different  
444 countries implemented measures at different time points according to regional differences in cases,  
445 but also following different strategies due to the novelty of the situation. Comparing Germany and  
446 the United Kingdom (UK), the first cases in both countries were reported only four days apart, in  
447 Germany on January 27, 2020 and in the UK on January 31, 2020. Germany, however, started to  
448 introduce a state-wise lockdown on March 13, with all states to be in lockdown on March 16,  
449 whereas, the UK went into lockdown on March 23. Both countries showed an exponential rise in  
450 cases. At the time when we started the data collection the rise in cases in Germany was slowing  
451 down, whereas the cases in the UK were still increasing quickly, which may have influenced the  
452 results. The convenience sample nature of the participants is a limitation as it could also contribute  
453 to the observed results. Although our study does include participants with pre-existing mental illness  
454 (overall: 14.22%; UK:20.29%; Germany: 11.59%), it was not designed to specifically address mental  
455 health impact of the pandemic on those with severe and enduring mental illness, as this would  
456 require a more targeted study design.

457 In conclusion, we find increased levels of depressive, dysthymic, vegetative symptoms, symptoms of  
458 anxiety and mistrust in both countries. Furthermore we find that 20-50% reach the clinical cut-off for  
459 further psychological interventions compared to 10-15% in the norm population. UK responders

460 report a stronger health and financial impact, as well as a stronger impact on their families. Both

461 countries require a tailored response to this mental health emergency.

462

463 **References**

- 464 Balmford, B., Annan, J.D., Hargreaves, J.C., Altoè, M., Bateman, I.J., 2020. Cross-Country  
465 Comparisons of Covid-19: Policy, Politics and the Price of Life. *Environ. Resour. Econ.* 1–27.
- 466 Bäuerle, A., Teufel, M., Musche, V., Weismüller, B., Kohler, H., Hetkamp, M., Dörrie, N., Schweda, A.,  
467 Skoda, E.-M., 2020. Increased generalized anxiety, depression and distress during the COVID-19  
468 pandemic: a cross-sectional study in Germany. *J. Public Health (Bangkok)*.
- 469 Brooks, S.K., Webster, R.K., Smith, L.E., Woodland, L., Wessely, S., Greenberg, N., Rubin, G.J., 2020.  
470 The psychological impact of quarantine and how to reduce it: rapid review of the evidence.  
471 *Lancet*.
- 472 Cliffe, J., 2018. Cheer up, Deutschland [WWW Document]. *Economist*. URL  
473 <https://www.economist.com/europe/2018/08/02/cheer-up-deutschland> (accessed 8.27.20).
- 474 Davies, D.J., 2017. Psychotic experiences beyond psychotic disorders: from measurement to  
475 computational mechanisms. University of Cambridge.
- 476 Evans-Lacko, S., Knapp, M., McCrone, P., Thornicroft, G., Mojtabai, R., 2013. The mental health  
477 consequences of the recession: economic hardship and employment of people with mental  
478 health problems in 27 European countries. *PLoS One* 8, e69792.
- 479 Gao, J., Zheng, P., Jia, Y., Chen, H., Mao, Y., Chen, S., Wang, Y., Fu, H., Dai, J., 2020. Mental health  
480 problems and social media exposure during COVID-19 outbreak. *PLoS One* 15, e0231924.
- 481 Garfin, D.R., Silver, R.C., Holman, E.A., 2020. The novel coronavirus (COVID-2019) outbreak:  
482 Amplification of public health consequences by media exposure. *Heal. Psychol.*
- 483 González-Sanguino, C., Ausín, B., ÁngelCastellanos, M., Saiz, J., López-Gómez, A., Ugidos, C., Muñoz,  
484 M., 2020. Mental health consequences during the initial stage of the 2020 Coronavirus  
485 pandemic (COVID-19) in Spain. *Brain. Behav. Immun.*
- 486 Hardt, J., Dragan, M., Kappis, B., 2011. A short screening instrument for mental health problems: The  
487 Symptom Checklist-27 (SCL-27) in Poland and Germany. *Int. J. Psychiatry Clin. Pract.* 15, 42–49.
- 488 Hardt, J., Egle, U.T., Kappis, B., Hessel, A., Brähler, E., 2004. Die Symptom-Checkliste SCL-27. *PPmP-*  
489 *Psychotherapie· Psychosom. Medizinische Psychol.* 54, 214–223.
- 490 Hardt, J., Gerbershagen, H.U., 2001. Cross-validation of the SCL-27: A short psychometric screening  
491 instrument for chronic pain patients. *Eur. J. Pain* 5, 187–197.

- 492 Holmes, E.A., O'Connor, R.C., Perry, V.H., Tracey, I., Wessely, S., Arseneault, L., Ballard, C.,  
493 Christensen, H., Silver, R.C., Everall, I., 2020. Multidisciplinary research priorities for the COVID-  
494 19 pandemic: a call for action for mental health science. *The Lancet Psychiatry*.
- 495 Jung, S., Kneer, J., Krueger, T., 2020. The German COVID-19 Survey on Mental Health: Primary  
496 Results. medRxiv.
- 497 Kene, P., 2020. Mental health implications of the COVID-19 pandemic in India. *Psychol. Trauma*  
498 *Theory, Res. Pract. Policy* 12, 585.
- 499 Kochhar, A.S., Bhasin, R., Kochhar, G.K., Dadlani, H., Mehta, V.V., Kaur, R., Bhasin, C.K., 2020.  
500 Lockdown of 1.3 billion people in India during Covid-19 pandemic: A survey of its impact on  
501 mental health. *Asian J. Psychiatr.*
- 502 Kwong, A.S.F., Pearson, R.M., Adams, M.J., Northstone, K., Tilling, K., Smith, D., Fawns-Ritchie, C.,  
503 Bould, H., Warne, N., Zammit, S., 2020. Mental health during the COVID-19 pandemic in two  
504 longitudinal UK population cohorts. medRxiv.
- 505 Mazza, M., Marano, G., Lai, C., Janiri, L., Sani, G., 2020. Danger in danger: Interpersonal violence  
506 during COVID-19 quarantine. *Psychiatry Res.* 113046.
- 507 Murray, G.K., Jones, P.B., 2012. Psychotic symptoms in young people without psychotic illness:  
508 Mechanisms and meaning. *Br. J. Psychiatry*. <https://doi.org/10.1192/bjp.bp.111.107789>
- 509 Ozamiz-Etxebarria, N., Dosil-Santamaria, M., Picaza-Gorrochategui, M., Idoiaga-Mondragon, N.,  
510 2020. Stress, anxiety, and depression levels in the initial stage of the COVID-19 outbreak in a  
511 population sample in the northern Spain. *Cad. Saude Publica* 36, e00054020.
- 512 Pfefferbaum, B., North, C.S., 2020. Mental health and the Covid-19 pandemic. *N. Engl. J. Med.*
- 513 Pierce, M., Hope, H., Ford, T., Hatch, S., Hotopf, M., John, A., Kontopantelis, E., Webb, R., Wessely,  
514 S., McManus, S., 2020. Mental health before and during the COVID-19 pandemic: a longitudinal  
515 probability sample survey of the UK population. *The Lancet Psychiatry*.
- 516 Plomecka, M.B., Gobbi, S., Neckels, R., Radziński, P., Skórko, B., Lazerri, S., Almazidou, K., Dedić, A.,  
517 Bakalović, A., Hrustić, L., 2020. Mental Health Impact of COVID-19: A global study of risk and  
518 resilience factors. medRxiv.
- 519 Qian, M., Wu, Q., Wu, P., Hou, Z., Liang, Y., Cowling, B.J., Yu, H., 2020. Psychological responses,  
520 behavioral changes and public perceptions during the early phase of the COVID-19 outbreak in  
521 China: a population based cross-sectional survey. medRxiv.

- 522 Raine, A., 1991. The SPQ: A Scale for the Assessment of Schizotypal Personality Based on DSM-III-R  
523 Criteria. *Schizophr. Bull.* 17, 555–564. <https://doi.org/10.1093/schbul/17.4.555>
- 524 Rossi, R., Socci, V., Talevi, D., Mensi, S., Niolu, C., Pacitti, F., Di Marco, A., Rossi, A., Siracusano, A., Di  
525 Lorenzo, G., 2020. COVID-19 pandemic and lockdown measures impact on mental health  
526 among the general population in Italy. An N= 18147 web-based survey. *MedRxiv*.
- 527 Sibony, A.-L., 2020. The UK COVID-19 Response: A Behavioural Irony? *Eur. J. Risk Regul.* 1–8.
- 528 Storry, M., Childs, P., 2016. *British cultural identities*. Taylor & Francis.
- 529 Ueda, M., Stickley, A., Sueki, H., Matsubayashi, T., 2020. Mental Health Status of the General  
530 Population during the COVID-19 Pandemic: A Cross-sectional National Survey in Japan.  
531 *medRxiv*.
- 532 Usher, K., Bhullar, N., Durkin, J., Gyamfi, N., Jackson, D., 2020. Family violence and COVID-19:  
533 Increased vulnerability and reduced options for support. *Int. J. Ment. Health Nurs.*
- 534 Uutela, A., 2010. Economic crisis and mental health. *Curr. Opin. Psychiatry* 23, 127–130.
- 535 Volkow, N.D., 2020. Collision of the COVID-19 and addiction epidemics.
- 536 Wang, C., Pan, R., Wan, X., Tan, Y., Xu, L., McIntyre, R.S., Choo, F.N., Tran, B., Ho, R., Sharma, V.K.,  
537 2020. A longitudinal study on the mental health of general population during the COVID-19  
538 epidemic in China. *Brain. Behav. Immun.*
- 539 Wang, J., Alsop, D.C., Song, H.K., Maldjian, J.A., Tang, K., Salvucci, A.E., Detre, J.A., 2003. Arterial  
540 transit time imaging with flow encoding arterial spin tagging (FEAST). *Magn. Reson. Med.*  
541 <https://doi.org/10.1002/mrm.10559>
- 542 WHO-Media-Briefing, n.d. WHO-Media-Briefing [WWW Document]. URL  
543 [https://www.who.int/dg/speeches/detail/who-director-general-s-opening-remarks-at-the-](https://www.who.int/dg/speeches/detail/who-director-general-s-opening-remarks-at-the-media-briefing-on-covid-19---11-march-2020)  
544 [media-briefing-on-covid-19---11-march-2020](https://www.who.int/dg/speeches/detail/who-director-general-s-opening-remarks-at-the-media-briefing-on-covid-19---11-march-2020)
- 545 WHO, 2020. Mental health and psychosocial considerations during the COVID-19 outbreak, 18  
546 March 2020. World Health Organization.
- 547

**Table 1. Cohort demographics and COVID-19 exposure including impact on life; and differences between Germany and the UK.**

		Whole sample	UK	Germany	Chi <sup>2</sup> for country comparison: UK vs. GER
N		858	239	541	
Age		43.27yrs (SD15.4)	39.01yrs (SD16.0)	45.36yrs (SD14.8)	
Gender	Female	71.6%	73.6%	71.2%	X-squared = 0.36042, df = 2, p-value = 0.8351
	Male	25.4%	24.3%	25.9%	
	Diverse	0.5%	0.4%	0.6%	
	Missing	2.5%	1.7%	2.4%	
Education	School leavers	0.1%	0.4%	-	X-squared = 69.309, df = 7, p-value = 2.038e-12 ***
	8years – A-Levels	14.3%	19.2%	13.1%	
	Professional college or Bachelor	24.3%	31.8%	21.6%	
	Masters or higher	60.1%	47.3%	64.9%	
	Missing	1.2%	1.3%	0.4%	
Children at home (max.18years)	Yes	28.1%	21.1%	30.7%	X-squared = 7.8323, df = 1, p-value = 0.005132 **
	Missing	2.0%	1.6%	2.6%	
<b>COVID19 exposure</b>					
Suspected infection	Positive Test	0.1%	-	0.2%	X-squared = 7.2523, df = 3, p-value = 0.06428
	Diagnosis	1.3%	2.5%	0.7%	
	Symptoms	15.6%	18.8%	14.2%	
	No infection	82.2%	78.7%	83.9%	
	Missing	0.8%	-	0.9%	
Symptoms	Fever	8.5%	10.0%	8.0%	X-squared = 1.038, df = 1, p-value = 0.3083 (based on 'no symptoms')
	Cough	17.1%	21.3%	15.5%	
	Shortness of breath	9.4%	10.0%	9.8%	
	Sore throat	21.2%	23.4%	19.9%	
	Fatigue	27.4%	28.5%	27.7%	
	Lost smell/taste	2.9%	4.2%	2.2%	
	Infected eyes	3.7%	3.8%	3.5%	
	Other symptoms	6.3%	6.3%	6.7%	
	No symptoms	55.2%	51.9%	55.8%	
Contact to people with potential infection	Positive test	7.8%	3.3%	9.8%	X-squared = 1.143, df = 1, p-value = 0.285 (based on 'no contact')
	Diagnosis	2.1%	5.4%	0.6%	
	Symptoms	12.8%	17.2%	11.7%	
	No contact	78.1%	74.9%	78.4%	
<b>Impact on work and financial situation</b>					
Impact on work	Home office	48.7%	50.6%	46.8%	X-squared = 2.3897, df = 1, p-value = 0.1221
	Reductions of hours	7.1%	6.7%	7.4%	



	Unpaid leave	2.6%	3.4%	2.4%	(based on 'no change')
	Overtime/negative hours <sup>‡</sup>	7.7%	1.3%	11.3%	
	Lost job	3.9%	2.9%	3.7%	
	No change	16.1%	13.0%	17.4%	
Impact on family	Infected	5.8	10.5%	4.4%	X-squared = 38.313, df = 1, p-value = 6.025e-10 *** (based on 'no impact')
	Hospitalised	1.8%	1.7%	2.0%	
	Death	1.3%	3.8%	0.4%	
	Quarantine, symptoms	15.3%	23.9%	12.2%	
	Quarantine, no symptoms	7.5%	14.6%	4.6%	
	Reduced working hours	16.7%	26.4%	12.6%	
	Lost job	6.8%	10.9%	4.4%	
Financial impact of COVID-19	No impact	54.0%	46.0%	58.8%	X-squared = 19.185, df = 4, p-value = 0.0007227 ***
	Slight	16.4%	23.4%	12.8%	
	Moderate	13.3%	11.7%	12.8%	
	Big	12.6%	15.9%	11.7%	
	Extreme	3.3%	2.9%	3.3%	
	Missing	0.5%	-	0.7%	
Not enough money for food	Yes	2.9%	2.9%	3.1%	X-squared = 0.025974, df = 1, p-value = 0.872
	Missing	1.1%	1.0%	1.0%	
<b>Personal judgement of the situation</b>					
Are the restrictions stressful?	Not at all	13.5%	11.3%	14.8%	X-squared = 6.312, df = 4, p-value = 0.177
	Slightly	26.8%	29.3%	26.3%	
	Moderately	27.6%	25.5%	28.1%	
	Very	20.5%	24.3%	18.7%	
	Extremely	11.3%	9.2%	12.2%	
	Missing	0.2%	0.4%	-	
How concerned are you about your life stability?	Not at all	34.6%	46.4%	30.5%	X-squared = 21.661, df = 4, p-value = 0.0002341 ***
	Slightly	23.4%	22.2%	23.8%	
	Moderately	19.1%	14.2%	21.3%	
	Very	15.4%	10.9%	17.2%	
	Extremely	6.8%	5.0%	6.8%	
	Missing	0.7%	1.3%	0.4%	
How hopeful are you of a soon end of the pandemic in your region of residence?	Not at all	17.1%	14.2%	17.9%	X-squared = 28.824, df = 4, p-value = 8.489e-06 ***
	Slightly	32.1%	27.6%	34.9%	
	Moderately	28.6%	25.2%	30.1%	
	Very	14.7%	19.7%	12.8%	
	Extremely	7.6%	13.0%	4.3%	
Does the pandemic have any positive impact on	No	35.0%	31.0%	36.4%	X-squared = 14.225, df = 2, p-value = 0.0008147 ***
	Few	35.6%	29.3%	37.7%	
	Some	29.1%	38.9%	25.9%	
	Missing	0.4%	0.8%	-	

your personal life?					
<b>Mental and physical health status</b>					
Self-rated mental health, before COVID-19	Excellent	15.0%	14.2%	15.3%	X-squared = 34.938, df = 4, p-value = 4.783e-07 ***
	Very good	32.4%	21.8%	37.0%	
	Good	28.7%	30.1%	28.3%	
	Fair	16.4%	21.3%	14.6%	
	Poor	5.8%	11.3%	3.3%	
	Missing	1.6%	1.3%	1.5%	
Regular treatment for mental illness, before pandemic	Yes	13.3%	17.6%	10.1%	X-squared = 8.7436, df = 1, p-value = 0.003107 **
	Missing	11.4%	13.4%	7.2%	
Continuation of treatment during pandemic	More	2.3%	3.6%	1.0%	X-squared = 5.3799, df = 2, p-value = 0.06789
	Less	12.5%	13.6%	11.5%	
	Same	85.3%	82.8%	87.8%	
Self-rated physical health, before pandemic	Excellent	12.1%	13.0%	11.3%	X-squared = 1.5322, df = 4, p-value = 0.8209
	Very good	33.1%	32.2%	33.3%	
	Good	33.9%	31.8%	35.7%	
	Fair	16.3%	17.2%	15.5%	
	Poor	3.2%	3.8%	3.3%	
	Missing	1.4%	2.1%	1.0%	
Regular treatment for physical illness, before pandemic	Yes	19.5%	18.4%	20.2%	X-squared = 0.0008792, df = 1, p-value = 0.9763
	Missing	11.6%	14.6%	7.0%	
Continuation of treatment during pandemic	More	1.0%	1.8%	-	X-squared = 5.7522, df = 2, p-value = 0.05635
	Less	14.1%	14.3%	14.4%	
	Same	85.0%	83.9%	85.6%	
*<.05, **<.01, ***<.001; †Overtime/negative hours , is a concept uncommon in the UK.					

**Table 2.** Results from Analysis of Deviance on Poisson regression model showing the effects of differences between countries (UK and Germany) and time points (before and during the pandemic) on a set of different variables.

	Df	Deviance	Resid. Df	Resid. Dev	Pr(>Chi)
<b>Exercise and time spent outside</b>					
NULL			3103	1856.4	
Exercise/Time spent outside	1	331.95	3102	1524.4	<b>2.20E-16</b>
Country	1	6.02	3101	1518.4	<b>0.01413</b>
Time Point	1	0.12	3100	1518.3	0.72653
Country x Time Point	1	0.49	3099	1517.8	0.48265
Exercise/Time spent outside x Country	1	16.03	3098	1501.7	<b>6.24E-05</b>
Exercise/Time spent outside x Time Point	1	4.21	3097	1497.5	<b>0.04024</b>
Exercise/Time spent outside x Country x Time Point	1	0.60	3096	1496.9	0.43926
<b>Sleep during the week and the weekend</b>					
NULL			3097	562.64	
Sleep	1	27.53	3096	535.11	<b>1.55E-07</b>
Country	1	0.25	3095	534.85	0.6158
Time Point	1	0.11	3094	534.74	0.7401
Country x Time Point	1	0.02	3093	534.73	0.8995
Sleep x Country	1	0.02	3092	534.71	0.8959
Sleep x Time Point	1	0.53	3091	534.18	0.4678
Sleep x Country x Time Point	1	0.20	3090	533.99	0.6569
<b>Media consumption</b>					
NULL			6173	2934.8	
Media consumption	3	1069.36	6170	1865.4	<b>2.20E-16</b>
Country	1	2.22	6169	1863.2	0.1366
Time Point	1	41.55	6168	1821.7	<b>1.15E-10</b>
Country x Time Point	1	0.99	6167	1820.7	0.3195
Media consumption x Country	3	52.80	6164	1767.9	<b>2.02E-11</b>
Media consumption x Time Point	3	2.09	6161	1765.8	0.5544
Media consumption x Country x Time Point	3	2.60	6158	1763.2	0.4572
<b>Substance consumption</b>					
NULL			6174	9353.8	
Substance consumption	3	4047.50	6171	5306.2	<b>2.20E-16</b>
Country	1	0.20	6170	5306.1	0.6889
Time Point	1	1.20	6169	5304.9	0.2667
Country x Time Point	1	0.40	6168	5304.4	0.5126
Substance consumption x Country	3	33.70	6165	5270.8	<b>2.33E-07</b>
Substance consumption x Time Point	3	2.00	6162	5268.8	0.5734
Substance consumption x Country x Time Point	3	0.30	6159	5268.4	0.9569
<b>Mental well-being</b>					
NULL			15452	8116.7	
Mental well-being	9	919.78	15443	7196.9	<b>2.20E-16</b>

Country	1	0.17	15442	7196.7	0.6817
Time Point	1	59.39	15441	7137.3	<b>1.29E-14</b>
Country x Time Point	1	0.04	15440	7137.3	0.835
Mental well-being x Country	9	63.10	15431	7074.2	<b>3.37E-10</b>
Mental well-being x Time Point	9	397.26	15422	6676.9	<b>2.20E-16</b>
Mental well-being x Country x Time Point	9	7.77	15413	6669.1	0.5575

**Table 3.** Results for two different logistic regression models, investigating the association between demographic variables, variables of substance use, media use and sleep (A) as well as COVID19 impact (B) and the psychological symptoms (SCL dimensions) as well as global mental health status (GSI).

	Global Symptom Index			Depressive Symptoms			Dysthymic Symptoms			Agoraphobic Symptoms			Vegetative Symptoms			Symptoms of Mistrust			Sociophobic symptoms			
	E.S.	z-val.	p-val.	E.S.	z-val.	p-val.	E.S.	z-val.	p-val.	E.S.	z-val.	p-val.	E.S.	z-val.	p-val.	E.S.	z-val.	p-val.	E.S.	z-val.	p-val.	
<b>A</b>																						
(Intercept)	0.020	0.026	0.979	0.610	1.156	0.248	0.501	1.084	0.278	-0.024	-0.033	0.973	0.279	0.297	0.767	0.316	0.527	0.598	0.965	1.619	0.105	
Country of residence: Germany	-0.362	-2.033	<b>0.042</b>	-0.346	-2.803	<b>0.005</b>	-0.562	-5.269	<b>0.000</b>	-0.928	-5.391	<b>0.000</b>	-0.115	-0.509	0.611	0.223	1.513	0.130	-0.297	-2.122	<b>0.034</b>	
Gender: Female	0.468	2.179	<b>0.029</b>	0.344	2.444	<b>0.015</b>	0.314	2.504	<b>0.012</b>	0.527	2.408	<b>0.016</b>	0.638	2.223	<b>0.026</b>	-0.043	-0.295	0.768	0.497	2.891	<b>0.004</b>	
Age	-0.008	-1.186	0.235	-0.002	-0.373	0.709	-0.006	-1.371	0.170	-0.006	-0.943	0.346	-0.015	-1.730	0.084	-0.002	-0.327	0.744	-0.025	-4.423	<b>0.000</b>	
Highest education	-0.089	-1.569	0.117	-0.121	-3.142	<b>0.002</b>	0.001	0.016	0.987	-0.113	-2.087	<b>0.037</b>	-0.190	-2.829	<b>0.005</b>	-0.094	-2.117	<b>0.034</b>	-0.071	-1.573	0.116	
Alcohol consumpt.	-0.003	-0.092	0.927	0.049	1.922	0.055	0.006	0.266	0.790	0.027	0.748	0.454	-0.006	-0.126	0.900	0.005	0.168	0.867	-0.011	-0.397	0.336	
Tobacco consumpt.	-0.017	-0.386	0.700	-0.004	-0.138	0.890	0.015	0.624	0.533	-0.010	-0.245	0.807	-0.069	-1.217	0.224	-0.028	-0.832	0.406	-0.007	-0.207	0.429	
Vaping consumpt.	0.076	1.237	0.216	0.037	0.753	0.451	0.048	1.166	0.244	-0.024	-0.300	0.764	0.049	0.615	0.538	0.045	0.777	0.437	0.044	0.791	0.277	
Marihuana consumpt.	0.125	2.018	<b>0.044</b>	0.083	1.737	0.082	0.076	1.827	0.068	0.067	0.975	0.330	0.128	1.625	0.104	0.085	1.544	0.123	0.060	1.098	0.277	
Social media usage	0.173	1.975	<b>0.048</b>	0.053	0.874	0.382	0.081	1.521	0.128	0.132	1.559	0.119	0.133	1.241	0.215	0.089	1.280	0.201	-0.038	-0.529	0.597	
Video Games	0.138	1.536	0.125	0.127	2.015	<b>0.044</b>	0.087	1.516	0.130	0.033	0.371	0.711	0.081	0.680	0.497	0.091	1.187	0.235	0.138	1.920	0.055	
Print media usage	-0.122	-1.392	0.164	0.013	0.216	0.829	-0.096	-1.734	0.083	-0.024	-0.286	0.775	-0.092	-0.823	0.411	-0.103	-1.422	0.155	-0.027	-0.393	0.695	

Sleep during the week	-0.547	-3.207	<b>0.001</b>	-0.503	-4.264	<b>0.000</b>	-0.201	-1.855	0.064	0.006	0.034	0.973	-0.324	-1.432	0.152	-0.308	-2.247	<b>0.025</b>	-0.474	-3.648	<b>0.000</b>
Sleep during the weekend	0.065	0.421	0.674	0.101	0.936	0.349	-0.051	-0.499	0.618	-0.126	-0.759	0.448	-0.350	-1.713	0.087	-0.047	-0.369	0.712	0.157	1.305	0.197
Exercise	0.051	0.692	0.489	-0.048	-0.961	0.336	-0.058	-1.300	0.194	-0.007	-0.099	0.921	-0.021	-0.236	0.813	0.054	0.964	0.335	0.033	0.578	0.563
Time spent outside	-0.163	-2.210	<b>0.027</b>	-0.113	-2.257	<b>0.024</b>	-0.088	-1.981	<b>0.048</b>	-0.159	-2.199	<b>0.028</b>	0.064	0.702	0.483	-0.133	-2.353	<b>0.019</b>	-0.096	-1.659	0.099
<b>B</b>																					
(Intercept)	-1.930	-2.665	<b>0.008</b>	-0.500	-1.040	0.298	-0.861	-1.973	<b>0.048</b>	-1.326	-1.886	0.059	-2.160	-2.521	<b>0.012</b>	-1.092	-2.034	<b>0.042</b>	-1.688	-2.902	<b>0.000</b>
Country of residence: Germany	-0.588	-3.134	<b>0.002</b>	-0.521	-4.047	<b>0.000</b>	-0.608	-5.534	<b>0.000</b>	-1.115	-6.274	<b>0.000</b>	-0.452	-1.995	<b>0.046</b>	0.006	0.040	0.968	-0.169	-1.129	0.259
Gender: Female	0.144	0.692	0.489	0.090	0.659	0.510	0.178	1.455	0.146	0.445	2.048	<b>0.041</b>	0.431	1.609	0.108	-0.271	-1.928	0.054	0.268	1.575	0.144
Age	-0.014	-2.019	<b>0.044</b>	-0.002	-0.395	0.693	-0.010	-2.786	<b>0.005</b>	-0.008	-1.291	0.197	-0.014	-1.819	0.069	-0.002	-0.499	0.618	-0.025	-4.555	0.000
Highest education	0.003	0.056	0.955	-0.061	-1.503	0.133	0.051	1.332	0.183	-0.050	-0.846	0.397	-0.073	-1.019	0.308	-0.067	-1.436	0.151	0.023	0.471	0.638
Concerned about life stability	0.134	2.021	<b>0.043</b>	0.201	4.365	<b>0.000</b>	0.142	3.553	<b>0.000</b>	0.087	1.330	0.183	0.215	2.786	<b>0.005</b>	0.148	2.795	<b>0.005</b>	0.092	1.726	0.084
Hopeful for an end of COVID19	-0.093	-1.309	0.190	-0.116	-2.297	<b>0.022</b>	-0.058	-1.350	0.177	-0.207	-3.021	<b>0.003</b>	-0.066	-0.755	0.450	-0.041	-0.710	0.478	-0.025	-0.446	0.655
Financial Impact: Yes	0.015	0.207	0.836	-0.075	-1.430	0.153	-0.010	-0.236	0.813	0.086	1.244	0.213	-0.074	-0.829	0.407	0.000	-0.006	0.995	-0.062	-1.029	0.303
Work-changes -	0.167	0.840	0.401	-0.080	-0.601	0.548	-0.126	-1.085	0.278	-0.130	-0.687	0.492	-0.026	-0.105	0.916	0.231	1.510	0.131	-0.003	-0.020	0.984



**Table 4.** Results for two different logistic regression models, investigating the association between demographic variables, variables of substance use, media use and sleep (A) as well as COVID19 impact (B) and the total Schizotypal Personality Score (Total SPQ) as well as its dimensions.

	Total SPQ			Eccentricity			Paranoid Ideation			Social Anhedonia			Anomalous Experiences & Beliefs			Distorted Speech			Social Anxiety			
	E.S.	Z-val.	p-val.	E.S.	Z-val.	p-val.	E.S.	Z-val.	p-val.	E.S.	Z-val.	p-val.	E.S.	Z-val.	p-val.	E.S.	Z-val.	p-val.	E.S.	Z-val.	p-val.	
<b>A</b>																						
(Intercept)	3.354	33.588	<2e-16	1.155	3.831	0.000	1.631	6.174	0.000	2.585	12.295	<2e-16	0.415	1.648	0.099	1.129	4.317	0.000	1.865	8.615	<2e-16	
Country of residence: Germany	0.026	1.077	0.282	0.001	0.017	0.986	0.370	5.506	0.000	-0.004	-0.087	0.931	0.350	5.462	0.000	-0.089	-1.415	0.157	-0.270	-5.281	0.000	
Gender: Female	0.017	0.684	0.494	-0.335	-4.639	0.000	0.083	1.236	0.216	-0.273	-5.393	0.000	0.164	2.646	0.008	0.077	1.152	0.249	0.354	5.953	0.000	
Age	-0.003	-3.875	0.000	-0.009	-3.219	0.001	-0.009	-3.909	0.000	0.001	0.397	0.692	0.006	3.126	0.002	-0.005	-2.008	0.045	-0.009	-4.598	0.000	
Highest education	-0.077	10.421	<2e-16	-0.042	-1.851	0.064	-0.114	-5.958	0.000	-0.090	-5.836	0.000	-0.093	-5.220	0.000	-0.052	-2.696	0.007	-0.048	-2.975	0.003	
Alcohol consumpt.	-0.020	-4.154	0.000	-0.020	-1.370	0.171	-0.017	-1.370	0.171	-0.038	-3.712	0.000	0.000	-0.035	0.972	-0.003	-0.220	0.826	-0.031	-2.962	0.003	
Tobacco consumpt.	0.014	2.652	0.008	0.020	1.236	0.217	0.031	2.429	0.015	-0.006	-0.524	0.600	0.043	3.763	0.000	0.009	0.692	0.489	-0.009	-0.695	0.487	
Vaping consumpt.	0.045	4.716	0.000	0.121	5.057	0.000	0.035	1.334	0.182	0.027	1.216	0.224	0.008	0.299	0.765	0.066	2.830	0.005	0.039	1.852	0.064	
Marihuana consumpt.	0.038	3.706	0.000	0.027	0.879	0.380	0.040	1.516	0.130	0.009	0.404	0.686	0.049	2.018	0.044	0.053	2.055	0.040	0.042	1.918	0.055	
Social media usage	0.043	3.745	0.000	-0.013	-0.356	0.721	0.091	2.985	0.003	0.037	1.488	0.137	0.069	2.466	0.014	0.066	2.187	0.029	0.010	0.384	0.701	
Video Games	0.143	11.585	<2e-16	0.260	7.429	0.000	0.143	4.380	0.000	0.147	5.730	0.000	0.026	0.755	0.450	0.133	4.097	0.000	0.154	5.892	0.000	
Print media usage	-0.053	-4.416	0.000	-0.057	-1.542	0.123	-0.116	-3.669	0.000	-0.102	-3.931	0.000	0.049	1.666	0.096	-0.070	-2.203	0.028	-0.032	-1.259	0.208	
Sleep during the week	-0.056	-2.391	0.017	-0.134	-1.895	0.058	-0.125	-2.047	0.041	-0.075	-1.485	0.137	0.002	0.034	0.973	0.041	0.653	0.514	-0.072	-1.455	0.146	
Sleep during the weekend	-0.055	-2.526	0.012	-0.019	-0.289	0.773	-0.079	-1.388	0.165	-0.124	-2.637	0.008	-0.014	-0.261	0.794	-0.120	-2.038	0.042	0.018	0.380	0.704	
Exercise	-0.013	-1.342	0.180	-0.004	-0.151	0.880	0.015	0.617	0.537	-0.040	-1.987	0.047	0.012	0.557	0.578	-0.014	-0.555	0.579	-0.020	-0.955	0.340	



	E.S.	z-val.	p-val.	E.S.	z-val.	p-val.	E.S.	z-val.	p-val.	E.S.	z-val.	p-val.	E.S.	z-val.	p-val.	E.S.	z-val.	p-val.				
<b>Time spent outside</b>	-0.048	-5.125	<b>0.000</b>	-0.005	-0.182	0.855	-0.034	-1.354	0.176	-0.062	-3.067	<b>0.002</b>	-0.052	-2.288	<b>0.022</b>	-0.029	-1.148	0.251	-0.073	-3.517	<b>0.000</b>	
<b>B</b>																						
<b>(Intercept)</b>	2.196	23.994	<b>&lt;2e-16</b>	-0.218	-0.775	0.438	0.426	1.779	0.075	1.034	5.365	<b>0.000</b>	-0.347	-1.560	0.119	0.424	1.755	0.079	0.529	2.605	<b>0.009</b>	
<b>Country of residence: Germany</b>	0.034	1.390	0.164	0.017	0.230	0.818	0.380	5.518	<b>0.000</b>	0.002	0.033	0.974	0.327	5.163	<b>0.000</b>	-0.078	-1.240	0.215	-0.244	-4.709	<b>0.000</b>	
<b>Gender: Female</b>	-0.087	-3.623	<b>0.000</b>	-0.535	-7.733	<b>0.000</b>	-0.009	-0.145	0.885	-0.373	-7.715	<b>0.000</b>	0.106	1.775	0.076	-0.035	-0.547	0.584	0.265	4.568	<b>0.000</b>	
<b>Age</b>	-0.007	-8.805	<b>&lt; 2e-16</b>	-0.010	-4.415	<b>0.000</b>	-0.014	-6.760	<b>0.000</b>	-0.004	-2.675	<b>0.007</b>	0.006	3.450	<b>0.001</b>	-0.008	-4.156	<b>0.000</b>	-0.013	-7.412	<b>0.000</b>	
<b>Highest education</b>	-0.063	-7.982	<b>0.000</b>	-0.050	-2.027	<b>0.043</b>	-0.099	-4.839	<b>0.000</b>	-0.067	-3.989	<b>0.000</b>	-0.106	-5.727	<b>0.000</b>	-0.033	-1.555	0.120	-0.016	-0.913	0.361	
<b>Concerned about life stability</b>	0.021	2.286	<b>0.022</b>	-0.005	-0.181	0.857	0.067	2.793	<b>0.005</b>	0.030	1.527	0.127	0.067	3.069	<b>0.002</b>	-0.045	-1.799	0.072	-0.001	-0.046	0.964	
<b>Hopeful for an end of COVID19</b>	-0.029	-2.990	<b>0.003</b>	-0.053	-1.762	0.078	-0.003	-0.108	0.914	-0.030	-1.457	0.145	-0.025	-1.081	0.280	-0.024	-0.951	0.342	-0.036	-1.762	0.078	
<b>Financial impact: Yes</b>	0.021	2.159	<b>0.031</b>	0.067	2.224	<b>0.026</b>	0.009	0.331	0.740	-0.029	-1.377	0.169	0.090	3.962	<b>0.000</b>	0.020	0.786	0.432	0.003	0.119	0.905	
<b>Work-changes - Home Office: Yes</b>	-0.067	-2.703	<b>0.007</b>	0.009	0.118	0.906	-0.089	-1.347	0.178	-0.038	-0.707	0.479	-0.001	-0.019	0.985	-0.082	-1.258	0.208	-0.151	-2.792	<b>0.005</b>	
<b>Work-changes - Unpaid leave: Yes</b>	-0.299	-4.071	<b>0.000</b>	-0.270	-1.138	0.255	-0.357	-1.835	0.066	-0.501	-2.805	<b>0.005</b>	-0.321	-1.884	0.060	-0.079	-0.457	0.648	-0.276	-1.788	0.074	
<b>Work-changes - Lost job: Yes</b>	-0.045	-0.765	0.444	-0.119	-0.630	0.529	0.076	0.542	0.588	-0.041	-0.318	0.750	-0.041	-0.294	0.769	0.151	1.043	0.297	-0.260	-1.913	0.056	
<b>Work-changes - No change: Yes</b>	0.080	2.690	<b>0.007</b>	0.139	1.502	0.133	0.036	0.453	0.650	0.144	2.306	<b>0.021</b>	0.115	1.643	0.100	-0.079	-0.963	0.335	0.096	1.497	0.134	

Impact on quality of family relations	0.075	5.591	<b>0.000</b>	0.103	2.476	<b>0.013</b>	0.058	1.643	0.100	0.068	2.396	<b>0.017</b>	0.113	3.436	<b>0.001</b>	0.073	2.074	<b>0.038</b>	0.051	1.797	0.072
Impact on quality of social relations	-0.010	-0.736	0.462	0.028	0.682	0.495	-0.052	-1.434	0.152	-0.089	-3.107	<b>0.002</b>	0.033	1.020	0.308	0.015	0.426	0.670	0.023	0.797	0.426
Physical health status	0.131	10.834	<b>&lt;2e-16</b>	0.188	5.049	<b>0.000</b>	0.090	2.800	<b>0.005</b>	0.146	5.660	<b>0.000</b>	0.107	3.553	<b>0.000</b>	0.115	3.608	<b>0.000</b>	0.148	5.703	<b>0.000</b>
Mental health status	0.174	15.139	<b>&lt;2e-16</b>	0.234	6.603	<b>0.000</b>	0.232	7.650	<b>0.000</b>	0.188	7.719	<b>0.000</b>	0.068	2.409	<b>0.016</b>	0.142	4.731	<b>0.000</b>	0.194	7.859	<b>0.000</b>