

1                   **The Effect of Area Deprivation on COVID-19 Risk in Louisiana**

2

3   **Authors**

4   Madhav KC<sup>1</sup>, MPH; Evrim Oral<sup>2</sup>, Ph.D.; Susanne Straif-Bourgeois<sup>1</sup>, Ph.D., MPH; Ariane  
5   L. Rung<sup>1</sup>, Ph.D., MPH; Edward S. Peters<sup>1\*</sup>, DMD, SM, ScD

6

7   **Affiliations:**

8   1. Epidemiology Program, School of Public Health, Louisiana State University Health  
9   Sciences Center New Orleans, New Orleans, LA, United States

10

11   2. Biostatistics Program, School of Public Health, Louisiana State University Health  
12   Sciences Center New Orleans, New Orleans, LA, United States

13

14   *\*Corresponding Author:*

15   Edward S. Peters

16

17   Epidemiology Program, School of Public Health

18

19   Louisiana State University Health Sciences Center New Orleans

20

21   2020 Gravier Street, 2<sup>nd</sup> Floor

22

23   New Orleans, LA, 70112, United States

24

25   Email: [epete1@lsuhsc.edu](mailto:epete1@lsuhsc.edu)

26

27

28

29

30

31 **Abstract**

32 **Purpose:** Louisiana currently has the highest per capita case count for COVID-19 in the  
33 United States and disproportionately affects the Black or African American population.  
34 Neighborhood deprivation has been observed to be associated with poorer health  
35 outcomes. The purpose of this study was to examine the relationship between  
36 neighborhood deprivation and COVID-19 in Louisiana.

37 **Methods:** The Area Deprivation Index (ADI) was calculated and used to classify  
38 neighborhood deprivation at the census tract level. A total of 17 US census variables  
39 were used to calculate the ADI for each of the 1148 census tracts in Louisiana. The  
40 data were extracted from the American Community Survey (ACS) 2018. The  
41 neighborhoods were categorized into quintiles as well as low and high deprivation. The  
42 publicly available COVID-19 cumulative case counts by census tract was obtained from  
43 the Louisiana Department of Health website on July 31, 2020. Descriptive and Poisson  
44 regression analyses were performed.

45 **Results:** Neighborhoods in Louisiana were substantially different with respect to  
46 deprivation. The ADI ranged from 136.00 for the most deprived neighborhood and  
47 -33.87 in the least deprived neighborhood. We observed that individuals residing in the  
48 most deprived neighborhoods had a 45% higher risk of COVID-19 disease compared to  
49 those residing in the least deprived neighborhoods.

50 **Conclusion:** While the majority of previous studies were focused on very limited socio-  
51 environmental factors such as crowding and income, this study used a composite area-  
52 based deprivation index to examine the role of neighborhood environment on COVID-  
53 19. We observed a positive relationship between neighborhood deprivation and COVID-  
54 19 risk in Louisiana. The study findings can be utilized to promote public health  
55 preventions measures besides social distancing, wearing a mask while in public and  
56 frequent handwashing in vulnerable neighborhoods with greater deprivation.

57

58

## 59 **1. Introduction:**

60 On March 09, 2020, Louisiana reported its first case of COVID-19 and soon  
61 thereafter appeared to be a hot spot of the coronavirus pandemic in the US [1]. Within  
62 two weeks of the initial confirmed case, the state had one of the world's highest average  
63 daily growth rate [2-4]. As of July 31, 2020, the state of Louisiana has the highest per  
64 capita case count in the United States with a total of 116,280 confirmed cases and  
65 3,835 deaths [2]. The incidence and mortality rates of COVID-19 has been  
66 disproportionate across racial and ethnic groups [5, 6]. Specifically, non-Hispanic  
67 African Americans have higher rates of incidence, hospitalization, and death from  
68 COVID-19 compared to non-Hispanic Whites. In early July, the US Centers for Disease  
69 Control and Prevention (CDC) estimated that non-Hispanic African Americans have 4.7  
70 times the rate of age-adjusted COVID-19 related hospitalization rates than non-Hispanic  
71 Whites [7]. The sources of disparities in COVID-19 outcomes might be explained from a  
72 social determinants of health perspective. Non-Hispanic African Americans are more  
73 likely to have vulnerable and low-paying jobs that don't allow remote work, which  
74 increases risk of contracting COVID-19 [8, 9]. Furthermore, non-Hispanic African  
75 Americans are more likely to rely on public transportation and to live in crowded housing  
76 or work in crowded worksite that places them an increased risk for COVID-19 disease.  
77 African Americans exhibit a greater burden of chronic medical conditions, such as  
78 hypertension, diabetes, heart disease, chronic disease, and obesity that increase the  
79 severity of COVID-19 illness [10-12]. In Louisiana, 2.9 million people have at least one  
80 chronic condition, and a total of 68 percentage of Louisiana adults are overweight or  
81 obese [13]. Furthermore, the poverty rate is much higher among African Americans as

82 those of non-Hispanic Whites, and are concentrated in neighborhoods with high poverty  
83 [14, 15]. The neighborhood socioeconomic status (SES) is linked to access to health  
84 care services, people residing in low SES neighborhoods are less likely to have access  
85 to health care services, which further increases the risk of adverse health outcomes  
86 related to COVID-19, such as higher hospitalizations and mortality [16, 17].

87 Preliminary reports show a relationship between the neighborhood of residence  
88 and COVID-19 disease, hospitalization and death [18-20]. Those who reside in deprived  
89 neighborhoods, defined by low income and education, higher unemployment, and  
90 substandard living conditions have a greater risk of poor health outcomes such as  
91 obesity, diabetes, cancer, and heart diseases [21-23]. Higher incidence and mortality  
92 from COVID-19 have been observed in low-income or deprived neighborhoods [24-26].  
93 A study conducted by Bilal et al. reported a 36% higher incidence of COVID-19 in  
94 deprived neighborhoods compared to less deprived neighborhoods [25]. Systemic  
95 health, social, and income inequities are considered as the primary reasons that have  
96 contributed to the increased risk of contracting COVID-19 in persons residing in  
97 deprived neighborhoods [7, 27, 28].

98 Risk factors leading to COVID-19 disease, hospitalization, and mortality are not  
99 only at the individual or biological level; neighborhood-level factors and their interactions  
100 with individual-level factors are also responsible for the observed disparities. Lack of  
101 access to health care, unemployment, less education, and poor housing conditions  
102 significantly increase the risk of COVID-19 infection [28-31]. These determinants of  
103 health can be studied collectively as neighborhood or area deprivation.

104 Socioeconomic characteristics of residential neighborhoods influence health-related  
105 behaviors, conditions, and health outcomes [32, 33]. Deprived neighborhoods are  
106 correlated with health risk behaviors, overcrowding, less social cohesion, and higher  
107 levels of environmental pollutants, and has been identified as a critical social  
108 determinant of health [34-37]. Low socioeconomic status (SES), often regarded as a  
109 fundamental cause of disease, has been shown to increase the risk of COVID-19  
110 because it impacts access to fundamental resources that an individual or a  
111 neighborhood may require to avoid COVID-19 [24, 38].

112         Neighborhoods with a higher number of people per household or room tend to  
113 have a higher rate of confirmed COVID-19 cases than neighborhoods with fewer  
114 residents [25, 39, 40]. Individuals who share a room or live in overcrowded housing and  
115 the use of public transportation often spread the disease rapidly as distancing  
116 preventive measures are impossible to adopt.

117         In this study, we used the Area Deprivation Index (ADI) to measure  
118 neighborhood deprivation. The ADI is a composite measure of neighborhood  
119 socioeconomic disadvantage, created by Gopal K Singh in 2003 [41]. The ADI,  
120 composed of 17 education, employment, housing-quality, and poverty census derived  
121 measures, is a robust metric measuring many relevant social determinants of health  
122 that may help explain the socio-biologic mechanisms of disease [41, 42]. We  
123 hypothesize that deprived Louisiana neighborhoods have a higher risk of COVID-19  
124 reported cases than less deprived neighborhoods. To date, few studies in the US and  
125 none in Louisiana have assessed the role of social determinants of health on COVID-19  
126 disease. The studies that exist are limited, examining only a couple of specific risk

127 factors, such as overcrowding and income. The use of the Area Deprivation Index (ADI)  
128 in the present study includes 17 neighborhood-level factors and provides a robust  
129 measure of neighborhood deprivation. The primary purpose of this paper is to  
130 investigate the relationship between neighborhood deprivation and COVID-19 risk in  
131 Louisiana.

## 132 **2. Materials and methods:**

### 133 **2.1 Study Data**

134 Publicly available data on cumulative COVID-19 cases by census tract was  
135 obtained from the Louisiana Department of Health website on July 31, 2020 [2]. There  
136 are 64 parishes (counties) and 1,148 census tracts in Louisiana. All 64 parishes have  
137 reported cases of COVID-19. Because the census tract is considered a good proxy for  
138 neighborhood, census tract was selected as the unit of analysis for this study.[43] We  
139 extracted the American Community Survey (ACS) 2018 data for census tract level  
140 measures for Louisiana [44].

### 141 **2.2 COVID-19**

142 The main outcome in this study was COVID-19 cases per 1,000 persons in  
143 Louisiana census tracts as of July 31, 2020.

### 144 **2.3 Neighborhood Deprivation**

145 Neighborhood deprivation was measured by the ADI, as described by Singh in  
146 2003 [41]. ADI is a validated, factor-based deprivation index that uses 17 census  
147 derived measures of poverty, education, housing, and employment indicators at the

148 census tract level to classify the neighborhoods [41, 45]. More-disadvantaged  
149 neighborhoods are those with a higher ADI score.

150 The census indicators used in the calculation of ADI include educational  
151 distribution (percentage of the population with less than 9 years and with 12 or more  
152 years of education), median family income, median home value, median gross rent,  
153 median monthly mortgage, income disparity, unemployment, percent employed person  
154 in white-collar occupation, percent families below poverty, percent population below  
155 150% poverty threshold, single-parent household rate, homeownership rate, percent  
156 household without a telephone, percent household without a motor vehicle, percent  
157 occupied housing units without complete plumbing, and household crowding [41, 45].

158 Calculation of ADI score:

159 Data from the Census Bureau's American Community Survey (ACS) 2018 was  
160 used to calculate the ADI score. The 17 US census indicators were multiplied by the  
161 Singh's coefficients (factor weights) for all census tracts in Louisiana [41, 46].

162 The base score of each indicator was summed to get the total base score for a census  
163 tract. Each census tract's base score was standardized by dividing the difference  
164 between the individual census tract base score ( $b$ ) and the Louisiana census tract  
165 population mean ( $p$ ), by Louisiana census tract population standard deviation ( $S_p$ ) [46].

166 
$$\text{Standard base}_j = \frac{b - p}{S_p}, \quad j = 1, 2, \dots, k,$$

167 where  $j$  represents the  $j^{\text{th}}$  census tract, and  $k$  is the total number of census tracts in Louisiana.  
168 Finally, the standardized values were adjusted to a base mean of 100 and a standard deviation  
169 of 20 as suggested by Knighton et al [46].

$$170 \quad ADI_j = (Standard\ base_j + 100) * 20.$$

171 The details of ADI calculation and a list of variables included in the calculations can be  
172 found in Knighton et al [46].

173 Based on the ADI scores, the census tracts were categorized into quintiles of  
174 deprivation; they were also dichotomized as either low deprivation or high deprivation.  
175 The median Louisiana ADI was used to dichotomize the census tracts. Census tracts  
176 with missing values for the indicators were excluding while calculating the ADI.

### 177 **2.3 Statistical Analysis**

178 SAS 9.4 software was used for statistical analyses. Heat maps were created  
179 using ArcGIS software. Mean, standard deviation, median and interquartile range (IQR)  
180 of census indicators by ADI Quintiles (least deprived: Q1 and most deprived: Q5) were  
181 calculated for all census tracts in Louisiana. Poisson regression analysis was performed  
182 to estimate risk ratio. An offset variable was used, and the model was corrected for over  
183 dispersion.

### 184 **3. Results**

185 There was a substantial difference between the ADI of the least deprived and most  
186 deprived neighborhoods. The overall median (IQR) ADI for Louisiana was 104.32  
187 (76.00), with the most deprived neighborhood having an ADI of 136.00, and the least  
188 deprived neighborhood having an ADI of -33.87. While the median ADI of the least



189 deprived neighborhood was 76.00, the median ADI of the most deprived neighborhood  
 190 was 118.45 (Table 1).

191 Table 1: Area Deprivation Index (ADI) distribution in Louisiana Census Tracts (N=1127)

	<b>LA (Overall)</b>	Q1 (Least Deprived)	Q2	Q3	Q4	Q5 (Most Deprived)
Mean	<b>100</b>	69.29	96.25	104.26	110.85	119.30
Std Dev.	<b>20.00</b>	20.09	3.03	1.98	1.91	4.61
Median	<b>104.32</b>	76.00	96.64	104.32	110.94	118.48
IQR	<b>18.82</b>	20.09	5.02	3.50	3.46	5.37
Minimum	<b>-33.87</b>	-33.87	89.82	100.88	107.65	114.01
Maximum	<b>136.00</b>	89.61	100.86	107.62	114.00	136.00

192  
 193 Table 2 shows the median and interquartile range of census indicators that were  
 194 used in the calculation of ADI. The most deprived neighborhoods in Louisiana had  
 195 31.02% of families below poverty. Similarly, more than 15.47% of occupied housing  
 196 units lacked a motor vehicle. The unemployment rate was more than twice as high in  
 197 the deprived neighborhoods as the less deprived neighborhoods. Almost 3% of  
 198 households in the most deprived neighborhoods had more than one person per room.  
 199 Similarly, the median home value in the most deprived neighborhood was substantially  
 200 lower than those in the least deprived neighborhoods (\$74,550 vs \$273,900). These  
 201 results suggest that poor people with lower levels of education were clustered together  
 202 in Louisiana.

203

204 Table 2: Median and IQR values of census tract level indicators in Louisiana.  
205

Indicators	Least Deprived Neighborhoods (Q1)		Most Deprived Neighborhoods (Q5)	
	Median	IQR	Median	IQR
Percent of population aged ≥ 25 years with < 9 years of education (%)	1.71	2.29	6.68	5.97
Percent of population aged ≥ 25 years with greater or equal to a high school (%)	94.57	5.40	75.48	10.50
Percent of employed person ≥16 years of age in white-collar occupations (%)	49.79	14.50	20.13	10.63
Median family income (\$)	96,071	29,940	32,410	11,959
Income disparity*	0.83	0.49	1.82	0.47
Median home value (\$)	273,900	112,600	74,550	21,750
Median gross rent (\$)	1106	280	687	203
Median monthly mortgage (\$)	1803	575	881	171
Percent of owner-occupied housing units (%)	71.19	30.11	47.18	28.01
Percent of civilian labor force population ≥ 16 years of age unemployed (%)	4.09	3.36	10.61	9.03
Percent of families below the poverty level (%)	4.95	5.71	31.02	16.70
Percent of the population below 150% of the poverty threshold (%)	14.44	12.07	53.15	15.06
Percent of single-parent households with children < 18 years of age (%)	6.94	5.87	20.33	11.64
Percent of occupied housing units without a motor vehicle (%)	4.11	6.53	15.47	13.78
Percent of occupied housing units without a telephone (%)	1.50	1.60	3.25	3.15
Percent of occupied housing units without complete plumbing (%)	0.00	0.00	0.00	0.92
Percent of occupied housing units with more than one person per room (%)	0.62	1.48	2.87	3.88

206 *\*Income disparity was defined as the log of 100\*ratio of the number of households with*  
207 *<\$10,000 income to the number of households with \$50,000+ income*

208  
209  
210

211 Table 3: Relationship between the ADI and COVID-19 in Louisiana census tracts  
212 (N=1127)

ADI	N	RR	95% CI	p-value
Low Deprived Neighborhoods	563	Reference	-	-
High Deprived Neighborhoods	564	1.45	(1.31-1.59)	<0.0001

213  
214 From the Poisson regression analysis (Table 3) we observed that census tracts  
215 with high neighborhood deprivation was associated with an increased risk of COVID-19  
216 in Louisiana. There was a 45% higher risk of COVID-19 disease among individuals  
217 residing in most deprived neighborhoods compared to those in the least deprived  
218 neighborhoods (RR=1.45, 95% CI=1.31-1.59).

219 In figure 1, the census tracts in red represent the most deprived neighborhoods,  
220 while the census tracts in green are the least deprived neighborhoods in Louisiana. In  
221 figure 2, the census tracts in yellow represent census tracts with fewer COVID-19 cases  
222 per 1,000 persons as of July 31, 2020, while the census tracts in brown and dark brown  
223 represent higher COVID-19 cases per 1,000 persons. Figure 3 shows the distribution of  
224 ADI and COVID-19 cases per 1,000 persons simultaneously in Louisiana by census  
225 tracts.

Figure 1: ADI in Louisiana census tracts

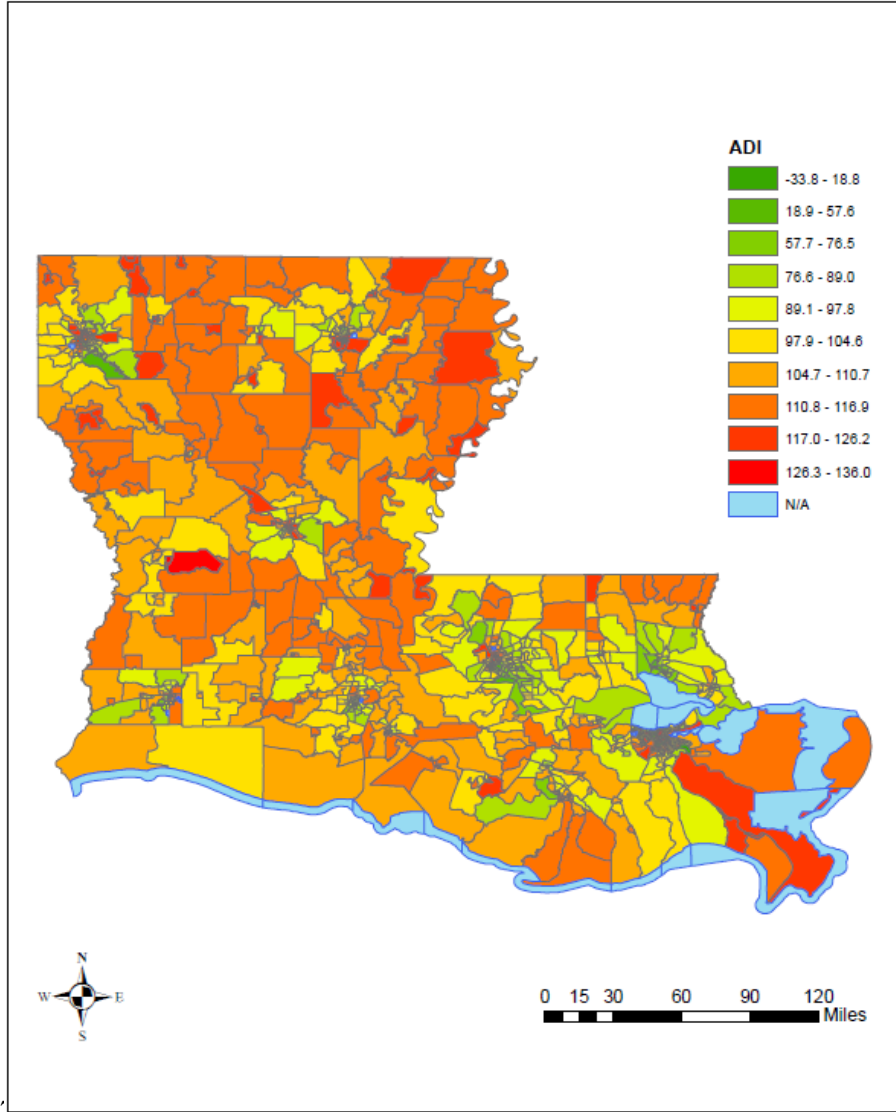


Figure 2: COVID-19 cases per 1,000 persons in Louisiana by census tract

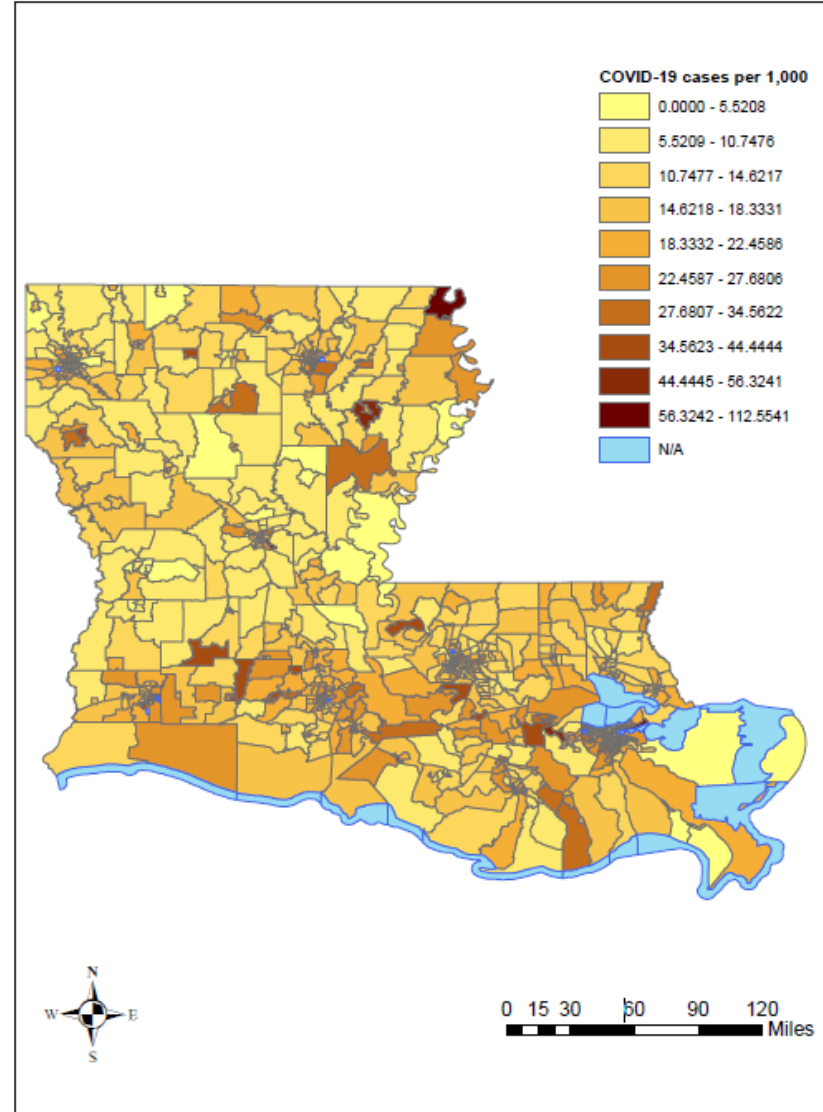
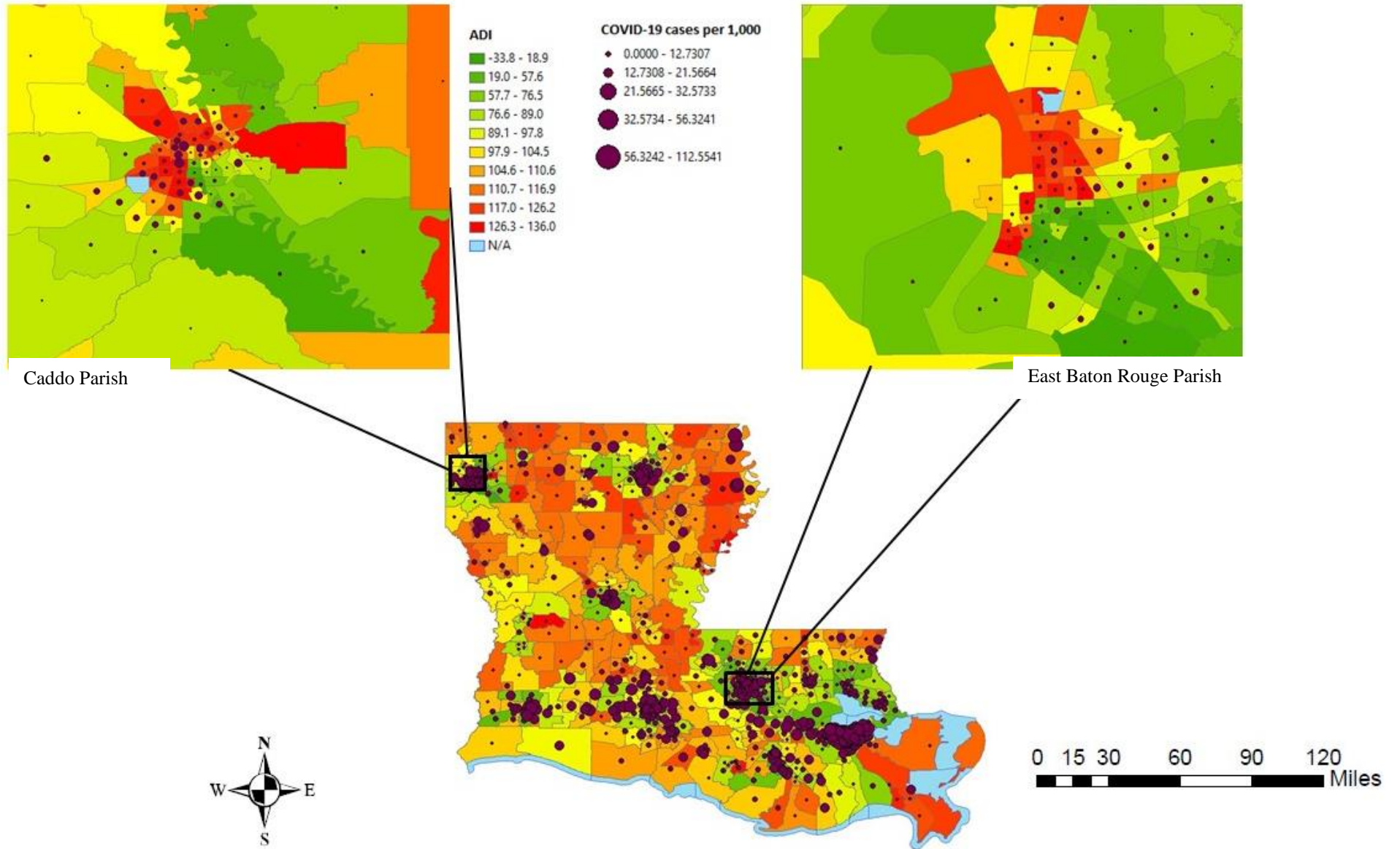


Figure 3: ADI and COVID-19 cases per 1,000 persons in Louisiana by census tracts



231  
232 **4. DISCUSSION**

233 To our knowledge, this is the first study to investigate the role of neighborhood  
234 deprivation on COVID-19 in Louisiana. While previous studies were limited to a very few  
235 socio-environmental factors, we used a composite area-based deprivation index to  
236 identify neighborhood deprivation in Louisiana, US. The ADI includes 17 US census  
237 indicators and could serve as an important tool in assessing the role of the  
238 neighborhood on COVID-19 disease. Our findings demonstrated the increased rate of  
239 COVID-19 disease among individuals who live in the most deprived neighborhoods  
240 compared to individuals residing in the least deprived neighborhoods. A New York study  
241 showed higher infection rates in low-income communities in New York City [47, 48]. The  
242 neighborhood or built environment can impact health status either by influencing  
243 environmental quality or by influencing behaviors that impact the transmission of  
244 COVID-19. One of the major factors that might have fueled the spread of COVID-19  
245 disease in poor neighborhoods is likely to be overcrowded living spaces. A study  
246 conducted by Emeruwa et al. observed a strong association between neighborhood  
247 socioeconomic status and household crowding and COVID-19 cases in New York City  
248 [48]. The odds of infection were twice as high among individuals who lived in  
249 households with greater crowding (interdecile OR, 2.27 [95% CI, 1.12-4.61]). Similarly,  
250 a study in California showed 3.7 times the rate of confirmed COVID-19 cases in  
251 overcrowded neighborhoods compared to less crowded neighborhoods.[49] These  
252 findings illustrate how the housing environment plays an important role in disease  
253 dynamics and in determining the health of individuals. Neighborhood socioeconomic



254 status and overcrowded housing may explain why non-Hispanic African American and  
255 Hispanic populations are at higher risk of getting COVID-19.

256 In addition to overcrowding and neighborhood-level SES, the disparities in  
257 COVID-19 cases between neighborhoods might be directly related to the nature of  
258 residents' occupations, a lack of telecommunication infrastructure, use of public  
259 transportation, and utility disruptions. Areas with concentrated poverty and extreme  
260 racial segregation had a higher incidence of COVID-19 [5, 50, 51]. Since low-income  
261 individuals often lack private vehicles, and may rely on public transportation, this in turn  
262 increases the risk of contracting COVID-19. An early study in China observed a positive  
263 association between the frequency of public transportation use and cumulative cases of  
264 COVID-19 [52]. However, the results may not be generalizable to areas where public  
265 transportation is not available, especially in rural Louisiana. In New York, Carrion et al.  
266 also found higher subway ridership among individuals who reside in neighborhoods  
267 where COVID-19 cases were higher [24]. Another risk factor that could potentially  
268 increase the individual's risk of contracting infection is occupation. Although many  
269 individuals have been practicing social distancing by working from home, 71% of  
270 American workers cannot work from home [53]. Individuals in certain blue-collar jobs  
271 tend to have a higher incidence of and mortality from COVID-19 [54]. The symptomatic  
272 cases of COVID-19 are easily picked up and can help prevent the spread of disease by  
273 isolating themselves, however, asymptomatic cases and symptomatic individuals who  
274 don't get paid sick leave or are essential workers are likely to spread the disease more  
275 rapidly. As of July 29, 2020, there were more than 100 worksite outbreaks in Louisiana  
276 [2]. The majority of studies have emphasized how adversely affected by COVID-19

277 certain racial and ethnic communities are; however, these groups of people may have  
278 differential exposure to the virus due to long-standing systemic health and social  
279 inequalities.

280 This study has several limitations. Due to a lack of data, we were unable to  
281 account for COVID-19 testing per census tract in our statistical analysis or perform a  
282 time series analysis of COVID-19 case counts. Similarly, we couldn't include the data on  
283 COVID-19 testing in a deprived neighborhood and the availability of free testing clinics  
284 in our analysis. This study is limited only to COVID-19 cases per 1,000 persons in  
285 Louisiana census tracts, the severe outcomes such as hospitalizations including  
286 Intensive Care Units (ICUs) admissions, and mortality were not assessed. Another  
287 limitation is that the impact of race couldn't be examined due to the lack of data at the  
288 census tract by race.

289 A key strength of this study is the use of the ADI to characterize neighborhood  
290 disadvantage. The ADI is a validated and becoming more widely used composite index  
291 of neighborhood disadvantage. The ADI provides a robust method to identify and  
292 classify deprived neighborhoods. The use of the most relevant social determinants of  
293 health in the calculation of ADI allows for better contextualization of the neighborhood.  
294 Despite these limitations, we believe that this study contributes to the literature on social  
295 determinants of health and COVID-19 disease in the neighborhood by establishing the  
296 relationship between the neighborhood deprivation and COVID-19 cases in Louisiana.  
297 Findings may help authorities to prioritize the public health response especially by  
298 increasing free testing sites and contact tracing in the targeted areas. In addition, it is  
299 important to promote public health preventions measures for case isolation and



300 quarantine of close contacts besides social distancing, wearing a mask while in public  
301 and frequent handwashing to ultimately reduce the spread of COVID-19 in the most  
302 vulnerable populations.

### 303 **5. Conclusion**

304 We observed a great disparity in deprivation among Louisiana neighborhoods. We also  
305 found an association between neighborhood deprivation and the COVID-19 cases per  
306 1,000 persons in Louisiana. There have been many studies on how COVID-19 is  
307 clustered in neighborhoods, however, future studies should explore specific  
308 mechanisms behind this association.

309

310

311

312

313

314

315

316

317

318

319

## 320 References

- 321 1. Louisiana Department of Health. Gov. Edwards Confirms Louisiana's First  
322 Presumptive Positive Case of COVID-19. 2020 07/06/2020.
- 323 2. Louisiana Department of Health. Louisiana Coronavirus (COVID-19) Information.  
324 In: Louisiana Department of Health, editor. COVID-19: LDH; 2020.
- 325 3. The Wall Street Journal. The Next Coronavirus Hot Spot: Louisiana Races to  
326 Prepare for the Worst: As number of cases jump, 'It's like preparing for an invisible  
327 hurricane. In: Calvert S, editor.: WSJ; 2020.
- 328 4. Office of the Governor. COVID-19 Louisiana Response Louisiana Office of the  
329 Governor, Louisiana 2020 March 23.
- 330 5. Chowkwanyun M, Reed AL, Jr. Racial Health Disparities and Covid-19 - Caution  
331 and Context. *N Engl J Med*. 2020;383(3):201-3.
- 332 6. Selden TM, Berdahl TA. COVID-19 And Racial/Ethnic Disparities In Health Risk,  
333 Employment, And Household Composition. *Health Aff (Millwood)*.  
334 2020:101377hlthaff202000897.
- 335 7. Centers for Disease Control and Prevencion. A weekly Surveillance Summary of  
336 U.S. COVID-19 Activity. Atlanta, GA CDC, National Center for Immunization and  
337 Respiratory Diseases (NCIRD) DoVD July 10, 2020.
- 338 8. Montenovolo L, Jiang X, Rojas LP, Schmutte IM, Simon IK, Weinberg AB, et al.  
339 Determinants of disparities in COVID-19 job losses. Cambridge, MA NATIONAL  
340 BUREAU OF ECONOMIC RESEARCH; 2020.
- 341 9. Fairlie R, Xu H, Couch K. THE IMPACTS OF COVID-19 ON MINORITY  
342 UNEMPLOYMENT: FIRST EVIDENCE FROM APRIL 2020 CPS MICRODATA.  
343 Cambridge, MA NATIONAL BUREAU OF ECONOMIC RESEARCH; 2020.
- 344 10. Wang X, Fang X, Cai Z, Wu X, Gao X, Min J, et al. Comorbid Chronic Diseases  
345 and Acute Organ Injuries Are Strongly Correlated with Disease Severity and Mortality  
346 among COVID-19 Patients: A Systemic Review and Meta-Analysis. *Research (Wash D*  
347 *C)*. 2020;2020:2402961.
- 348 11. Liu H, Chen S, Liu M, Nie H, Lu H. Comorbid Chronic Diseases are Strongly  
349 Correlated with Disease Severity among COVID-19 Patients: A Systematic Review and  
350 Meta-Analysis. *Aging Dis*. 2020;11(3):668-78.
- 351 12. Team CC-R. Preliminary Estimates of the Prevalence of Selected Underlying  
352 Health Conditions Among Patients with Coronavirus Disease 2019 - United States,  
353 February 12-March 28, 2020. *MMWR Morb Mortal Wkly Rep*. 2020;69(13):382-6.

- 354 13. Partnership to fight chronic disease. WHAT IS THE IMPACT OF CHRONIC  
355 DISEASE ON LOUISIANA? : FightChronicDisease.org; 2020 2017.
- 356 14. Gradin C. Poverty among minorities in the United States: explaining the racial  
357 poverty gap for Blacks and Latinos. *Appl Econ*. 2012;44(29):3793-804.
- 358 15. Firebaugh G, Acciaia F. For blacks in America, the gap in neighborhood poverty  
359 has declined faster than segregation. *P Natl Acad Sci USA*. 2016;113(47):13372-7.
- 360 16. Wilder JM. The Disproportionate Impact of COVID-19 on Racial and Ethnic  
361 Minorities in the United States. *Clin Infect Dis*. 2020.
- 362 17. Tai DBG, Shah A, Doubeni CA, Sia IG, Wieland ML. The Disproportionate Impact  
363 of COVID-19 on Racial and Ethnic Minorities in the United States. *Clin Infect Dis*. 2020.
- 364 18. Koma W, Artiga S, Neuman T, Claxton G, Rae M, Kates J, et al. Low-Income and  
365 Communities of Color at Higher Risk of Serious Illness if Infected with Coronavirus. *KFF*  
366 May 07, 2020.
- 367 19. Millett GA, Jones AT, Benkeser D, Baral S, Mercer L, Beyrer C, et al. Assessing  
368 Differential Impacts of COVID-19 on Black Communities. *Ann Epidemiol*. 2020.
- 369 20. Schneider B. COVID-19 Cases Heaviest in Poor Neighborhoods. *SF Weekly*.
- 370 21. Roux AVD, Mair C. Neighborhoods and health. *Ann Ny Acad Sci*.  
371 2010;1186:125-45.
- 372 22. Kawachi I, Berkman L. *Neighborhoods and Health*: Oxford University Press.
- 373 23. Messer LC, Laraia BA, Kaufman JS, Eyster J, Holzman C, Culhane J, et al. The  
374 development of a standardized neighborhood deprivation index. *J Urban Health*.  
375 2006;83(6):1041-62.
- 376 24. Carrion D, Colicino E, Pedretti NF, Arfer KB, Rush J, DeFelice N, et al.  
377 Assessing capacity to social distance and neighborhood-level health disparities during  
378 the COVID-19 pandemic. *medRxiv*. 2020.
- 379 25. Bilal U, Barber S, Diez-Roux A. Spatial Inequities in COVID-19 outcomes in  
380 Three US Cities. *medRxiv*.
- 381 26. Pluemper T, Neumayer E. The COVID-19 Pandemic Predominantly Hits Poor  
382 Neighborhoods, or does it? Evidence from Germany. *medRxiv*.  
383 2020:2020.05.18.20105395.
- 384 27. Borjas GJ. Demographic Determinants of Testing Incidence and COVID-19  
385 Infections in New York City Neighborhoods. National Bureau of Economic Research;  
386 2020.

- 387 28. Davilla K, Abraham M, Seaberry C. Towards Health Equity in Connecticut: The  
388 Role of Social Inequality and the Impact of COVID-19. Connecticut Connecticut Health  
389 Foundation June 2020.
- 390 29. Palmer RC, Ismond D, Rodriguez EJ, Kaufman JS. Social Determinants of  
391 Health: Future Directions for Health Disparities Research. *Am J Public Health*.  
392 2019;109(S1):S70-S1.
- 393 30. Shah GH, Shankar P, Schwind JS, Sittaramane V. The Detrimental Impact of the  
394 COVID-19 Crisis on Health Equity and Social Determinants of Health. *J Public Health  
395 Manag Pract*. 2020;26(4):317-9.
- 396 31. Takian A, Kiani MM, Khanjankhani K. COVID-19 and the need to prioritize health  
397 equity and social determinants of health. *Int J Public Health*. 2020;65(5):521-3.
- 398 32. Robinette JW, Charles ST, Gruenewald TL. Neighborhood Socioeconomic Status  
399 and Health: A Longitudinal Analysis. *J Community Health*. 2017;42(5):865-71.
- 400 33. Bosma H, van de Mheen HD, Borsboom GJ, Mackenbach JP. Neighborhood  
401 socioeconomic status and all-cause mortality. *Am J Epidemiol*. 2001;153(4):363-71.
- 402 34. Northridge ME, Sclar ED, Biswas P. Sorting out the connections between the  
403 built environment and health: a conceptual framework for navigating pathways and  
404 planning healthy cities. *J Urban Health*. 2003;80(4):556-68.
- 405 35. Nathan A, Villanueva K, Rozek J, Davern M, Gunn L, Trapp G, et al. The Role of  
406 the Built Environment on Health Across the Life Course: A Call for CollaborACTION. *Am  
407 J Health Promot*. 2018;32(6):1460-8.
- 408 36. Jackson RJ. The impact of the built environment on health: an emerging field.  
409 *Am J Public Health*. 2003;93(9):1382-4.
- 410 37. Algren MH, Bak CK, Berg-Beckhoff G, Andersen PT. Health-Risk Behaviour in  
411 Deprived Neighbourhoods Compared with Non-Deprived Neighbourhoods: A  
412 Systematic Literature Review of Quantitative Observational Studies. *PLoS One*.  
413 2015;10(10):e0139297.
- 414 38. Raifman MA, Raifman JR. Disparities in the Population at Risk of Severe Illness  
415 From COVID-19 by Race/Ethnicity and Income. *Am J Prev Med*. 2020;59(1):137-9.
- 416 39. Chen JT, Krieger N. Revealing the unequal burden of COVID-19 by income,  
417 race/ethnicity, and household crowding: US county vs. ZIP code analyses. Boston, MA  
418 Harvard Center for Population and Development Studies 2020. Contract No.: 1.
- 419 40. Rader B, Scarpino S, Nande A, Hill A, Reiner R, Pigott D, et al. Crowding and the  
420 epidemic intensity of COVID-19 transmission. *medRxiv*. 2020.

- 421 41. Singh GK. Area deprivation and widening inequalities in US mortality, 1969-1998.  
422 Am J Public Health. 2003;93(7):1137-43.
- 423 42. Kind AJH, Buckingham WR. Making Neighborhood-Disadvantage Metrics  
424 Accessible - The Neighborhood Atlas. N Engl J Med. 2018;378(26):2456-8.
- 425 43. Krieger N, Chen JT, Waterman PD, Soobader MJ, Subramanian SV, Carson R.  
426 Geocoding and monitoring of US socioeconomic inequalities in mortality and cancer  
427 incidence: does the choice of area-based measure and geographic level matter?: the  
428 Public Health Disparities Geocoding Project. Am J Epidemiol. 2002;156(5):471-82.
- 429 44. U.S. Census Bureau. American Community Survey (ACS) 2018: American Fact  
430 Finder; [Available from:  
431 [https://factfinder.census.gov/faces/nav/jsf/pages/download\\_center.xhtml](https://factfinder.census.gov/faces/nav/jsf/pages/download_center.xhtml)].
- 432 45. Kind AJ, Jencks S, Brock J, Yu M, Bartels C, Ehlenbach W, et al. Neighborhood  
433 socioeconomic disadvantage and 30-day rehospitalization: a retrospective cohort study.  
434 Ann Intern Med. 2014;161(11):765-74.
- 435 46. Knighton AJ, Savitz L, Belnap T, Stephenson B, VanDerslice J. Introduction of an  
436 Area Deprivation Index Measuring Patient Socioeconomic Status in an Integrated  
437 Health System: Implications for Population Health. EGEMS (Wash DC). 2016;4(3):1238.
- 438 47. Reichberg SB, Mitra PP, Haghmad A, Ramrattan G, Crawford JM, Berry GJ, et  
439 al. Rapid Emergence of SARS-CoV-2 in the Greater New York Metropolitan Area:  
440 Geolocation, Demographics, Positivity Rates, and Hospitalization for 46,793 Persons  
441 Tested by Northwell Health. Clin Infect Dis. 2020.
- 442 48. Emeruwa UN, Ona S, Shaman JL, Turitz A, Wright JD, Gyamfi-Bannerman C, et  
443 al. Associations Between Built Environment, Neighborhood Socioeconomic Status, and  
444 SARS-CoV-2 Infection Among Pregnant Women in New York City. JAMA. 2020.
- 445 49. CalMatters. The neighborhoods where COVID collides with overcrowded homes.  
446 California CalMatters; 2020.
- 447 50. Barber. S, Headen. I, Branch. B, Tabb. L, K Y. COVID-19 in Context: Racism,  
448 Segregation and Racial Inequities in Philadelphia2020.
- 449 51. Gamblin M. Race, Hunger, and COVID-19: The impact on African  
450 Americans2020 7/17/2020. Available from: [https://www.bread.org/blog/race-hunger-  
451 and-covid-19-impact-african-americans](https://www.bread.org/blog/race-hunger-and-covid-19-impact-african-americans).
- 452 52. Zheng R, Xu Y, Wang W, Ning G, Bi Y. Spatial transmission of COVID-19 via  
453 public and private transportation in China. Travel Med Infect Dis. 2020;34:101626.
- 454 53. U.S. Bureau of Labor Statistics. Workers who could work at home, did work at  
455 home, and were paid for work at home, by selected characteristics, averages for the  
456 period 2017-2018. MA: U.S. Bureau of Labor Statistics; 2018.

457 54. Office for National Statistics. Male blue-collar workers 'twice as likely to die from  
458 Covid-19'. London, UK: ONS May 11, 2020.  
459