

Prevalence and Integration of symptoms and comorbidities with age of the SARS-CoV-2 patients: a systematic evaluation and meta-analysis

Mohammad Meshbahur Rahman¹ MSc, Badhan Bhattacharjee² BSc, Zaki Farhana³ MSc, Mohammad Hamiduzzaman⁴ Ph.D., Muhammad Abdul Baker Chowdhury⁵ MPH., Mohammad Sorowar Hossain⁶ Ph.D., Mahbubul H Siddiquee⁷ Ph.D., Md. Ziaul Islam⁸ Ph.D., Enayetur Raheem⁹ Ph.D., Md. Jamal Uddin¹⁰ PhD.

1. Biomedical Research Foundation, Dhaka-1230, Bangladesh. Email: meshbahur.rahman@brfbd.org
2. Department of Biotechnology, BRAC University, Dhaka 1212, Bangladesh. Email: badhanbiplob81@gmail.com
3. Department of Community Medicine, National Institute of Preventive and Social Medicine, Mohakhali, Dhaka-1212, Bangladesh. Email: zakifarhanaesha@yahoo.com
4. College of Medicine & Public Health, Flinders University, South Australia, Australia. Email: mohammad.hamiduzzaman@flinders.edu.au
5. Department of Emergency Medicine, University of Florida College of Medicine, FL 32608, USA. Email: mchow023@fiu.edu
6. Biomedical Research Foundation, Dhaka-1230, Bangladesh. Email: sorowar.hossain@brfbd.org
7. Biomedical Research Foundation, Dhaka-1230, Bangladesh. Email: mahbubul.siddiquee@brfbd.org
8. Department of Community Medicine, National Institute of Preventive and Social Medicine, Mohakhali, Dhaka-1212, Bangladesh. Email: dr.ziaul.islam@gmail.com
9. Biomedical Research Foundation, Dhaka-1230, Bangladesh. Email: enayetur.raheem@brfbd.org
10. Department of Statistics (Biostatistics and Epidemiology), Shahjalal University of Science & Technology, Sylhet-3114, Bangladesh. Email: jamal-sta@sust.edu

Correspondence to: Mohammad Meshbahur Rahman MSc, Biomedical Research Foundation, Dhaka-1230, Bangladesh. Email: meshbahur.rahman@brfbd.org

Abstract

Background: The COVID-19 affected millions of people, and the patients present a constellation of symptoms and comorbidities. We aimed to estimate the prevalence of reported symptoms and comorbidities and assess the correlation between a series of symptoms and comorbidities and age of the patients' positive in COVID-19.

Methods: We performed a systematic review and meta-analysis [PROSPERO registration: CRD42020182677]. Databases [PubMed, SCOPUS, EMBASE, WHO, Semantic Scholar, and COVID-19 Primer] were searched for clinical studies published from January to April 2020. The pooled prevalence of symptoms and comorbidities were identified using the random effect model, and the multivariable factor analysis was performed to show the correlation between a group of symptoms and comorbidities and age of the COVID-19 patients.

Findings: Twenty-nine articles [China (24); Outside of China (5)], with 4,884 COVID-19 patients were included in this study. The meta-analysis investigated 33 symptoms, where fever [84%], cough/dry cough [61%], and fatigue/weakness [42%] were found more prevalent. Out of 43 comorbidities investigated, acute respiratory distress syndrome (ARDS) [61%], hypertension [23%] and diabetes [12%] were the most prevalent comorbid condition. The multivariable factor analysis showed positive association between a group of symptoms and comorbidities, and with the patients' age. For example, the symptoms comprising fever, dyspnea/shortness of breath, nausea, vomiting, abdominal pain, dizziness, anorexia and pharyngalgia; and the comorbidities including diabetes, hypertension, coronary heart disease, COPD/lung disease and ARDS were positively correlated with the COVID-19 patient's age.

Interpretation: Among 19 symptoms and 11 comorbidities investigated, a group of symptoms and comorbidities were found correlated with the patients infected in COVID-19.

Keywords: COVID-19 pandemic; Symptoms and Comorbidities; Meta-analysis and Correlation Analysis.

Summary box

What is already known?

- Study on the correlation of symptoms and comorbidities with age of the COVID-19 patients are yet to be explored sufficiently.

What are the new findings?

- We investigated all the reported symptoms [33] and comorbidity [43] where fever [84%], cough/dry cough [61%], fatigue/weakness [42%] and dyspnea/shortness of breath [39%] were the most prevalent symptoms, and ARDS [61%], followed by hypertension [23%] and diabetes [12%] were the most prevalent comorbid condition.
- Key findings, a group of symptoms and comorbidities were positively correlated with the COVID-19 patients' age.
- The symptoms comprising fever, dyspnea/shortness of breath, nausea, vomiting, abdominal pain, dizziness, anorexia and pharyngalgia; and the comorbidities including diabetes, hypertension, coronary heart disease, COPD/lung disease and ARDS were positively associated with the COVID-19 patient's age.

What do the new findings imply?

- This efforts in determining the correlation of the frequent symptoms and comorbidities will help the clinicians and disease practitioners to implement patient-centred interventions.

Introduction

The COVID-19 pandemic caused by Severe Acute Respiratory Virus 2 (SARS-CoV-2) is a serious public health crisis in the history of humanity. Originated in Wuhan, China, SARS-CoV-2 has spread to every corner of the world within a few months. As of September 12, 2020, over 28.33 million confirm cases and 911 877 deaths have been reported from over 216 countries.¹

As the virus is moving fast, various clinical spectrum and differential clinical outcomes are unfolding across different geographic locations. Several symptoms have been reported which includes fever, cough, myalgia, sputum production, headache, hemoptysis, diarrhea, and dyspnea.² The severity of COVID-19 has been reported to be linked with various host factors including diabetes, hypertension, cardiovascular disease, chronic obstructive pulmonary disease (COPD), malignancy, and chronic liver disease.² While susceptibility to COVID-19 covers all age groups, people with compromised immune systems and or having comorbidity are at a higher risk.^{3,4} A few review studies investigated symptoms and comorbidities of the COVID-19 infected patients with a shorter time-frame.^{3,6-9} The mortality rate is high in older COVID-19 patients with organ dysfunctions comprising shock, acute respiratory distress syndrome (ARDS), acute cardiac injury, and acute kidney injury.⁵

However, there is scarce information regarding the relationship among the symptoms, comorbidities and age of the COVID-19 patients. To address this issue, we aimed to estimate all the reported symptoms and comorbidities and assess the correlation between a series of symptoms and comorbidities and age of the COVID-19 infected patients.

Methods

The PRISMA-P-2009 guidelines was followed in our systematic review and meta-analysis [PROSPERO registration: CRD42020182677].¹⁰

The major databases, such as PubMed, SCOPUS, EMBASE, WHO, Semantic Scholar, and COVID-19 Primer were searched to include peer-reviewed and pre-proof research articles. The mortality starts falling at the end of April 2020 and we limited our review within initial period to high mortality period to understand the correlation among symptoms, comorbidity, and age of the COVID-19 infected patients. Also, our literature search strategy covered almost hundred percent of the COVID-19 symptoms and comorbidities. Therefore, we restricted our search language in only English literature within the time period January to April 20, 2020.

The search terms used included: "COVID-19" OR "COVID-2019" OR "severe acute respiratory syndrome coronavirus 2" OR "2019-nCoV" OR "2019nCoV" OR "nCoV" OR "SARS-CoV-2" OR "coronavirus" AND "clinical for epidemiological characterization" OR "Symptom" OR "Symptoms" AND "comorbidity" OR "comorbidities". Some articles were manually retrieved from Google Scholar and other databases. We also searched the reference lists of the selected publications. MMR, BB, and MJU independently screened the titles and abstracts of the articles and checked full-text eligibility [supplementary Table S1].

Research articles were selected if they reported clinical characteristics [both symptoms and comorbidities] of the COVID-19 patients. The inclusion criteria for studies were: clinical investigations or consecutive cases; focused on infected patients; reported at least ten cases and considered all age-groups from any countries. Studies were excluded if they were: grey literature, case report and secondary studies; specific to children or pregnant women; and only reported symptoms or comorbidities. A standardized form was used to extract data from

eligible studies. Disagreements were resolved through discussion with co-reviewers. For each study, publication details, research design and the participants' characteristics with major findings were recorded.

The quality of each study was assessed by ZF using the Joanna Briggs Institute (JBI) guidelines.¹¹ A set of eight questions was used for the quality assessment. Random effect model was used to estimate the prevalence of all reported symptoms and comorbidities in the COVID-19 patients. Heterogeneity was assessed using the Cochran Q and the I² statistic.^{12,13} To assess asymmetry and publication bias, we used funnel plot and Egger test [$p < 0.001$] to test the presence of small-study effects. Multivariate analysis [multivariable factor analysis (MFA)] was performed to examine the correlation among symptoms and comorbidities with the patients' age.^{14,15} All statistical analyses were conducted by Stata version 15 (Stata Corp, College Station, TX) using the metaprop, metabias, metafunnel commands, and R-programming language using the FactoMineR package.

Results

A total of 799 articles [database: 791, other sources: 8] were retrieved. Of them, 403 articles were removed due to duplication and irrelevance. Furthermore, 303 review articles, editorials, case reports, and irrelevant study populations were excluded. Fifty-three articles were excluded as they failed to meet all inclusion criteria. Finally, eleven articles were excluded due to not peer-reviewed and small sample sizes, resulting in the selection of 29 articles for our review. The PRISMA flow diagram visualizes the screening process of selected studies [Figure 1].

Supplementary table S2 summarizes the characteristics of the selected studies and 83% of selected studies for this meta-analysis were reported from China. Five studies were conducted

in the USA, India, Spain, and South Korea. The overall sample size was 4,884 COVID-19 patients, with an age range of 10 to 92 years. Among the patients, 2,675 [55%] were male, and 2,208[45%] were female. The sample size ranged from 12 to 1,099 patients, where most studies (79%) had a retrospective research design.

Altogether, 33 symptoms and 43 comorbidities were found. Almost all the studies reported fever [proportion of patients ranging from 25 to 100%], cough/dry cough [22-92%] and myalgia or muscle ache [3-63%] as common symptoms of COVID-19. Other reported symptoms were: headache [3-66%]; diarrhea [3-48%]; fatigue/weakness [9-85%]; dyspnea/shortness of breath [1-88%]; sputum production or expectoration [4-42%]; vomiting [1-19%]; nausea [4-27%]; chest tightness [7-55%]; and sore throat [5-32%]. Additionally, the less reported symptoms and comorbidities were represented in supplementary Table S2. For the comorbidities, about 93% and 86% of studies reported two comorbidities: diabetes [2 to 35%] and hypertension [8-50%]. Other prevalent comorbidities were chronic obstructive pulmonary disease (COPD)/lung infection [0.2-38%]; cardiovascular disease [5-23%]; chronic liver disease [1-29%]; malignancy [1-7%]; coronary heart disease [1-33%]; cerebrovascular disease [1-19%]; chronic renal disease [1-8%]; chronic kidney disease [1-29%]; and Acute respiratory distress syndrome (ARDS) [17-100%]. The less reported comorbidities were presented in supplementary Table S2.

We meta-analysed 19 symptoms and 11 comorbidities, using a random effect model that were reported in at least five selected articles [Table 1 and supplementary figure S3-S32]. Meta-analysis showed a higher prevalence of fever [pooled prevalence: 84%, 95% confidence interval (CI): 80-88%] and cough/dry cough [61%, 95% CI:55-67%]; followed by fatigue/weakness [42%, 95% CI:34-51%]; dyspnea/shortness of breath [39%, 95% CI:27-51%]; headache and diarrhea [12%, 95% CI:8-17%]; sore throat [15%, 95% CI:11-20%];

myalgia/muscle ache and sputum production/expectoration [24%, 95% CI:18-30%]; rhinorrhea [13%, 95% CI:4-26%]; chest tightness [25%, 95% CI:15-31%]; and anorexia [26%, 95% CI:16-38%]. The less prevalent symptoms were: chest pain [3%], nausea [8%], vomiting [6%], abdominal pain [4%], dizziness [5%], pharyngalgia [7%], and hemoptysis [2%].

Table 1. Overall Prevalence summary for clinical symptoms and comorbidities of the COVID-19 patients.

Clinical Characteristics (Symptoms)	No. Reports	No. Patients	Pooled Prevalence	Test for Heterogeneity		Egger's Test
				I ² (%)	P-value	
Fever	29 (100%)	4115	0.84 (0.80-0.88)	90.670	<0.001	<0.001
Cough / Dry cough	29(100%)	3039	0.61 (0.55-0.67)	93.400	<0.001	0.382
Fatigue/Weakness	21 (72.41%)	1627	0.42 (0.34-0.51)	96.320	<0.001	0.107
Dyspnoea/Shortness of breath	18 (62.06%)	920	0.39 (0.27-0.51)	97.370	<0.001	<0.001
Headache	22 (72.86%)	448	0.12 (0.09-0.16)	89.980	<0.001	0.109
Diarrhoea	22 (72.86%)	474	0.12 (0.08-0.17)	93.720	<0.001	0.004
Sore Throat	9 (31.03%)	348	0.15 (0.11-0.20)	84.990	<0.001	0.266
Myalgia/Muscle Ache	25 (86.20%)	925	0.24 (0.18-0.30)	95.000	<0.001	<0.001
Rhinorrhoea	5 (17.24%)	48	0.13 (0.04-0.26)	88.010	<0.001	0.088
Sputum Production/Expectoration	15 (51.72%)	1066	0.24 (0.19-0.30)	92.310	<0.001	0.956
Chest tightness	11 (37.93%)	462	0.25 (0.15-0.31)	88.440	<0.001	0.527
Chest pain	5 (17.24%)	15	0.03 (0.01-0.04)	0.000	<0.95	0.878
Nausea	12 (41.37%)	238	0.08 (0.04-0.12)	91.780	<0.001	0.023
Vomiting	14 (48.27%)	209	0.06 (0.03-0.09)	88.330	<0.001	0.096
Abdominal Pain	6 (20.68%)	42	0.04 (0.03-0.06)	22.890	<0.26	0.431
Dizziness	6 (20.68%)	71	0.05 (0.03-0.08)	64.21	<0.002	0.132
Anorexia	7 (24.13%)	339	0.26 (0.16-0.38)	94.470	<0.001	<0.001
Pharyngalgia	6 (20.68%)	86	0.07 (0.04-0.13)	88.030	<0.001	0.017
Haemoptysis	7 (24.13%)	47	0.02 (0.01-0.04)	63.480	<0.01	0.005
Comorbidity						
Diabetes	27 (93.10)	539	0.12 (0.09-0.15)	83.09	<0.001	0.009
Hypertension	25 (86.20)	1096	0.23 (0.18-0.28)	93.24	<0.001	0.149
Cardiovascular Disease	15 (51.72)	212	0.1 (0.07-0.13)	73.96	<0.001	0.031
Coronary heart disease	10 (34.48)	141	0.07 (0.03-0.12)	92.21	<0.001	0.007
Cerebrovascular disease	10 (34.48)	100	0.06 (0.02-0.08)	90.77	<0.001	0.004
COPD/Lung disease	21 (72.41)	136	0.03 (0.02-0.05)	86.67	<0.001	<0.001
Chronic liver disease	15 (51.72)	96	0.05 (0.03-0.07)	78.23	<0.001	<0.001
Chronic Renal disease	9 (31.03)	32	0.01 (0.00-0.03)	54.63	<0.001	0.003
Chronic Kidney disease	6 (20.68)	41	0.05 (0.02-0.10)	86.69	<0.001	0.036
Malignancy	15 (51.72)	82	0.03 (0.02-0.04)	68.06	<0.001	<0.001
ARDS**	4 (13.79)	111	0.61 (0.15-0.97)	98.01	<0.001	0.301

** ARDS reported in four studies and we include this study into our analysis because it showed higher prevalence rate.

The most prevalent comorbidities were ARDS [61%, 95% CI: 15-97%], hypertension [23%, 95% CI: 18-28%], and diabetes [12%, 95% CI:9-15%], followed by cardiovascular disease

[10%, 95% CI:7-13%]; coronary heart disease [7%, 95% CI:3-12%]; cerebrovascular disease [6%, 95% CI:2-08%]; COPD/lung disease [3%, 95% CI: 02-50%]; chronic liver disease [05%, 95% CI: 03-07%]; chronic Renal disease [0.01%, 95% CI: 00%-03%]; chronic Kidney disease [05%, 95% CI: 02-10%]; and malignancy [03%, 95% CI: 02-04%].

There was a high heterogeneity [I^2 ranged from 85% to 97%, Cochran Q-statistic $p < 0.001$] in all the prevalence of symptoms, except chest pain [$I^2 = 0\%$, Cochran Q-statistic $p < 0.95$]; abdominal pain [$I^2 = 22.89\%$, Cochran Q-statistic $p < 0.26$]; dizziness [$I^2 = 64.21\%$, Cochran Q-statistic $p < 0.002$]; and haemoptysis [$I^2 = 63.48\%$, Cochran Q-statistic $p < 0.01$]. In the case of comorbidities, the heterogeneity was found higher in almost all the comorbidities [I^2 ranged from 68.06% to 98.01%, Cochran Q-statistic $p < 0.001$].

Figure 2 presents the association of symptoms/comorbidities with the patients' age. Nineteen symptoms and 11 comorbidities were categorized into: symptom group and comorbidity group. The correlation circle represented the between/within-group integration with the patients' age. The longer vectors indicated more influential than others, and the vectors that were close to each other with the same direction indicated a highly positive association [Figure 2]. Vectors that were the opposite direction showed a negative association, and the vectors with an almost 90-degree angle demonstrated no association. The first principal component showed 31.59% variation and the second one showed 20.45% variation in the dataset.

In symptom group, fever, dyspnea/shortness of breath, nausea, vomiting, abdominal pain, dizziness, anorexia, and pharyngalgia were found positively associated with the COVID-19 patients' age. In contrast, sore throat, headache, rhinorrhea, myalgia/muscle ache, fatigue, and hemoptysis were negatively associated with age. Similarly, in the comorbidity group,

diabetes, hypertension, coronary heart disease, COPD/lung disease, and ARDS were in the same direction and positively associated with the age of the COVID-19 infected patients. The symptoms like chest tightness/pain and the comorbidities, including chronic liver and kidney diseases, showed no association with the patients' age.

Considering group integration, the fever, dyspnea/shortness of breath, dizziness, pharyngalgia, and anorexia in the symptom group were positively associated with diabetes, ARDS, and kidney, cardiovascular, and liver diseases in comorbidity group. The symptoms like diarrhea, nausea, vomiting, and abdominal pain were positively associated with hypertension, coronary heart disease, and COPD/lung disease. The symptoms of sore throat, headache, rhinorrhea, myalgia/muscle ache, fatigue, and hemoptysis were positively associated with cerebrovascular disease.

Table 2 summarizes the quality assessment of the selected studies. In 16 [55%] studies, participant recruitment method was appropriate, while the method was unclear in 45% studies. Thirteen [45%] studies had a sample size of more than 100, and about 96% of studies reported the subjects and design in detail. Validated methods were used in all studies, where the measurement was reliable, and the response rate was 100%.

Table 2. Quality assessment of the selected studies.

Authors	Were study participants sampled in an appropriate way?	Was the sample size adequate?	Were the study subjects and the setting described in detail?	Was the data analysis conducted with sufficient coverage of the identified sample?	Were valid methods used for the identification of the condition?	Was the condition measured in a reliable way for all participants?	Was there appropriate statistical analysis?	Was the response rate adequate, and if not, was the response rate managed appropriately?
Wan et al. ³⁶	Yes	Yes	Yes	Yes	Yes	Yes	Yes	Yes
Zhang et al. ³⁷	Yes	Yes	Yes	Yes	Yes	Yes	Yes	Yes
Xu et al. ²⁰	Not Clear	No	Yes	Yes	Yes	Yes	Yes	Yes
Zhu et al. ³⁸	Not Clear	No	Yes	Yes	Yes	Yes	Yes	Yes
Chen et al. ³⁹	Yes	No	Yes	Yes	Yes	Yes	Yes	Yes

Liu et al. ⁴⁰	Yes	No	Yes	Yes	Yes	Yes	Yes	Yes
Chen et al. ²²	Not Clear	Yes	Yes	Yes	Yes	Yes	Yes	Yes
Mo et al. ⁴¹	Yes	Yes	Yes	Yes	Yes	Yes	Yes	Yes
Liu et al. ²¹	Not Clear	Yes	Yes	Yes	Yes	Yes	Yes	Yes
Jin et al. ⁴²	Yes	Yes	Yes	Yes	Yes	Yes	Yes	Yes
Wang et al. ¹⁶	Yes	Yes	Yes	Yes	Yes	Yes	Yes	Yes
Yuan et al. ²³	Not Clear	No	Yes	Yes	Yes	Yes	Yes	Yes
Guan et al. ⁴³	Yes	Yes	Yes	Yes	Yes	Yes	Yes	Yes
Liu et al. ³¹	Not Clear	No	Yes	Yes	Yes	Yes	Yes	Yes
Zhou et al. ⁴⁴	Yes	Yes	Yes	Yes	Yes	Yes	Yes	Yes
Huang et al. ²	Not Clear	No	Yes	Yes	Yes	Yes	Yes	Yes
Chen et al. ²⁴	Yes	No	Yes	Yes	Yes	Yes	Yes	Yes
Du et al. ⁴⁵	Not clear	No	Yes	Yes	Yes	Yes	Yes	Yes
Xu et al. ⁴⁶	Yes	No	Yes	Yes	Yes	Yes	Not Clear	Yes
Goyal et al. ⁴⁷	Not Clear	Yes	Yes	Yes	Yes	Yes	Not Clear	Yes
Barrasa et al. ²⁵	Yes	No	Yes	Yes	Yes	Yes	Yes	Yes
Yan et al. ⁴⁸	Yes	No	Not Clear	Yes	Yes	Yes	Yes	Yes
Gupta et al. ⁴⁹	Not Clear	No	Yes	Yes	Yes	Yes	No	Yes
Yang et al. ⁵⁰	Yes	Yes	Yes	Yes	Yes	Yes	Yes	Yes
Han et al. ⁵¹	Not Clear	Yes	Yes	Yes	Yes	Yes	Yes	Yes
Kim et al. ⁵²	Yes	No	Yes	Yes	Yes	Yes	Not Clear	Yes
Wang et al. ⁵³	Yes	Yes	Yes	Yes	Yes	Yes	Yes	Yes
Shi et al. ⁵⁴	Not Clear	No	Yes	Yes	Yes	Yes	Yes	Yes
Yang et al. ²⁶	Not Clear	No	Yes	Yes	Yes	Yes	Yes	Yes

The funnel plots for symptoms and comorbidities are presented in a figure [supplementary figure S33-S62]. Funnel plot found the existence of asymmetry and publication bias for all symptoms and comorbidities. The Egger test of symptoms - fever, dyspnea/shortness of breath, diarrhea, myalgia/muscle ache, nausea, anorexia, pharyngalgia, and hemoptysis were found significant [$p < 0.05$], which suggested the presence of small-study effects. The comorbidities- diabetes, cardiovascular disease, cerebrovascular disease, COPD/lung disease, chronic liver disease, chronic renal disease, chronic kidney disease, and malignancy were found significant [$p < 0.05$] by the Egger's test, that recommended the presence of small-study effects.

Discussion

Our study aimed to estimate the prevalence of reported symptoms and comorbidities, and assess the correlation between a group of symptoms and comorbidities and age of the patients tested positive for COVID-19. In our systematic review and meta-analysis of 29 studies, involving 4,884 patients, twenty-four [83%] studies performed in China, and five were

outside of China. The ratio of infection was reported higher in males than in females [100:82.5], and this result is consistent with previous studies.^{2,6,16,17} It is generally assumed that males are more likely to be infected by bacteria and viruses than females, because of the women's robust innate and adaptive immune responses.^{3,18} Moreover, the patterns of occupation, social communication, and lifestyle expose males to be exposed more to the agent factors of infectious diseases than in females. The mean or median age of the patients ranged from 40 to 66 years, and we found older people are more susceptible to COVID-19, and our study strongly supports this finding.

We found 33 symptoms and 43 comorbidities in the studies, and our meta-analysis included most reported 19 symptoms and 11 comorbidities. Fever, cough/dry cough, fatigue, dyspnea, anorexia, chest tightness, myalgia, sore throat, rhinorrhea, headache, and diarrhea were highly prevalent symptoms where the others symptoms were found rarely. All studies reported fever [84%] and cough/dry cough [61%] as symptoms consistent with relevant studies across the countries.¹⁹⁻²² Previous studies reported hypertension as the most common comorbidity,^{3,7,8} but our study suggests three major comorbidities- acute respiratory distress syndrome (61%), hypertension (23%), and diabetes (12%). Acute respiratory distress syndrome was found a higher prevalence rate [61%] as reported in three studies in China and one in outside China.²³⁻²⁶ Our systematic review estimated all the reported symptoms and comorbidities of COVID-19 infected patients. The symptoms like anorexia [26%], chest tightness [25%] and rhinorrhea [13%], and one comorbidity, i.e., acute respiratory distress syndrome[61%] were examined with significant prevalence ($p < 0.05$), but they were under-investigated in the published systematic reviews.^{6,7,27,28}

Human aging is associated with declines in adaptive and innate immunity, and it loses the body's ability to protect against infections.^{29,30} Virologists and clinicians agree that the older

adults are more vulnerable to COVID-19, and the patient's age can strongly be correlated with symptoms and comorbidities.³¹⁻³⁵ Relating this context, our correlation analysis found a group of symptoms and comorbidities were significantly associated with the in COVID-19 patient's age. There was a correlation between a cluster of symptoms and comorbidities where symptoms and comorbidities were also found internally correlated. For example, the symptoms including fever, dyspnea/shortness of breath, nausea, vomiting, abdominal pain, dizziness, anorexia and pharyngalgia; and the comorbidities comprising diabetes, hypertension, coronary heart disease, COPD/lung disease and ARDS were positively correlated with the age of COVID-19 patients. Additionally, the fever, dyspnea/shortness of breath, dizziness, pharyngalgia, and anorexia in the symptom group were positively correlated with diabetes, ARDS, and kidney, cardiovascular, and liver diseases in comorbidity group. As a unique initiative, the epitomization of the correlation of symptoms and comorbidities with the age of the of COVID-19 patients which may contribute in designing comprehensive health care to COVID-19 patients.

Limitation of the Study

During literature search, our selected studies confirmed almost hundred present of the COVID-19 symptoms except the loss of taste or smell and we were limited to only in English texts within the time frame January to April 20, 2020. The majority of the studies were found in China, and only five from other countries. More studies outside of China could add value in prevalence estimation. We found no data for <10 years children and thus, more studies are warranted in the child COVID-19 patients. Lastly, a few studies were found low sample size.

Conclusion

In conclusion, this systematic review and meta-analysis is the pioneering effort of its kind that reports all frequent symptoms and comorbidities, and determines the correlation with the

age of the COVID-19 patients. This review may help the clinicians, health care providers, policymakers to take effective strategies for the management of the COVID-19 patients.

Acknowledgments

We are thankful to the Health Assistant (Md. Saiful Islam) who supported and provided computer and necessary software during the data analysis.

Author contributions

MMR and MJU contributed to the design and conceptualization of the study. MMR, BB and ZF contributed to the screening of studies for inclusion and data extraction. MMR, BB, MJU and MABC searched the databases. MMR and ZF contributed to the analysis and interpretation of the data. MMR, BB and MH contributed to the drafting and formatting of the manuscript. MMR, MH, MABC, MSH, MHS, MZI, ER and MJU contributed to the data extraction, writing, and editing of the manuscript. All authors contributed to the reviewing for important intellectual context and approved of the manuscript to be submitted.

Funding statement

This research did not receive any specific grant from funding agencies in the public, commercial, or not-for-profit sectors.

Competing interests

All authors declare that no competing interests exist.

Data availability statement

The full list of data and the data entries for all included studies is provided in the manuscript as a supplementary file. No additional supporting data is available.

Ethics statement

Not Applicable

References

1. WHO. WHO Coronavirus Disease (COVID-19) Dashboard. Geneva: World Health Organization, 2020.
2. Huang C, Wang Y, Li X, Ren L, Zhao J, Hu Y, et al. Clinical features of patients infected with 2019 novel coronavirus in Wuhan, China. *Lancet* 2020;395:497–506.
3. Yang J, Zheng Y, Gou X, Pu K, Chen Z, Guo Q, et al. Prevalence of comorbidities and its effects in patients infected with SARS-CoV-2: a systematic review and meta-analysis. *Int J Infect Dis* 2020;94:91–95.
4. Emami A, Javanmardi F, Pirbonyeh N, Akbari A. Prevalence of Underlying Diseases in Hospitalized Patients with COVID-19: a Systematic Review and Meta-Analysis. *Arch Acad Emerg Med* 2020; 8:e35.
5. Zhang G, Hu C, Luo L, Fang F, Chen Y, Li J, et al. Clinical Features and Treatment of 221 Patients with COVID-19 in Wuhan, China. *SSRN Electron J* 2020; Feb 2. doi: <http://dx.doi.org/10.2139/ssrn.3546095>
6. Qian K, Deng Y, Tai Y, Peng J, Peng H, Jiang L. Clinical Characteristics of 2019 Novel Infected Coronavirus Pneumonia : A Systemic Review and Meta-analysis. *medRxiv* 2020; Feb 17. doi: <https://doi.org/10.1101/2020.02.14.20021535>.
7. Jain V, Yuan J-M. Systematic review and meta-analysis of predictive symptoms and comorbidities for severe COVID-19 infection. *medRxiv* 2020; Mar 16. doi: <https://doi.org/10.1101/2020.03.15.20035360>.
8. Baradaran A, Ebrahimzadeh MH, Baradaran A, Kachooei AR. Prevalence of Comorbidities in COVID-19 Patients: A Systematic Review and Meta-Analysis.

- Arch Bone Jt Surg 2020;247:247–55.
9. Fu L, Wang B, Yuan T, Chen X, Ao Y, Fitzpatrick T, et al. Clinical characteristics of coronavirus disease 2019 (COVID-19) in China: A systematic review and meta-analysis. *J Infect* 2020;80:656–65.
 10. Moher D, Liberati A, Tetzlaff J, Altman DG. Preferred Reporting Items for Systematic Reviews and Meta-Analyses: The PRISMA Statement. *PLoS Med* 2009; 6:e1000097.
 11. Munn Z, Moola S, Lisy K, Riitano D, Tufanaru C. Methodological guidance for systematic reviews of observational epidemiological studies reporting prevalence and cumulative incidence data. *Int J Evid Based Healthc* 2015;13:147—53.
 12. Riley RD, Higgins JPT, Deeks JJ. Interpretation of random effects meta-analyses. *BMJ* 2011;342:964–7.
 13. Chowdhury MZI, Rahman M, Akter T, Akhter T, Ahmed A, Shovon MA, et al. Hypertension prevalence and its trend in Bangladesh: evidence from a systematic review and meta-analysis. *Clin Hypertens* 2020; 26: 1-19.
 14. De Tayrac M, Lê S, Aubry M, Mosser J, Husson F. Simultaneous analysis of distinct Omics data sets with integration of biological knowledge: Multiple Factor Analysis approach. *BMC Genomics* 2009; 10: 1-17.
 15. Rahman MM, Farhana Z, Tani TA, Ullah MO. Integrating Overweight-obesity and Reproductive Factors of Married Women in Bangladesh. *J Gov Innov* 2017; 3:55–72.
 16. Wang D, Hu B, Hu C, Zhu F, Liu X, Zhang J, et al. Clinical Characteristics of 138 Hospitalized Patients with 2019 Novel Coronavirus-Infected Pneumonia in Wuhan, China. *JAMA - J Am Med Assoc* 2020;323:1061–9.
 17. Liu Y, Huang F, Xu J, Yang P, Qin Y, Cao M, et al. Anti-hypertensive Angiotensin II receptor blockers associated to mitigation of disease severity in elderly COVID-19 patients. *medRxiv* 2020; Mar 3. doi: <https://doi.org/10.1101/2020.03.20.20039586>.

18. Jaillon S, Berthenet K, Garlanda C. Sexual Dimorphism in Innate Immunity. *Clin Rev Allergy Immunol* 2019;56:308–21.
19. Fu L, Wang B, Yuan T, Chen X, Ao Y, Fitzpatrick T, et al. Clinical characteristics of coronavirus disease 2019 (COVID-19) in China: A systematic review and meta-analysis. *J Infect* 2020;80: 656-65.
20. Xu XW, Wu XX, Jiang XG, Xu KJ, Ying LJ, Ma CL, et al. Clinical findings in a group of patients infected with the 2019 novel coronavirus (SARS-Cov-2) outside of Wuhan, China: Retrospective case series. *BMJ* 2020;368:m606.
21. Liu K, Fang Y-Y, Deng Y, Liu W, Wang M-F, Ma J-P, et al. Clinical characteristics of novel coronavirus cases in tertiary hospitals in Hubei Province. *Chin Med J (Engl)*. 2020;0:1.
22. Chen T, Wu D, Chen H, Yan W, Yang D, Chen G, et al. Clinical characteristics of 113 deceased patients with coronavirus disease 2019: retrospective study. *Bmj*. 2020;2:m1091.
23. Yuan M, Yin W, Tao Z, Tan W, Hu Y. Association of radiologic findings with mortality of patients infected with 2019 novel coronavirus in Wuhan, China. *PLoS One* 2020;15:e0230548.
24. Chen N, Zhou M, Dong X, Qu J, Gong F, Han Y, et al. Epidemiological and clinical characteristics of 99 cases of 2019 novel coronavirus pneumonia in Wuhan, China: a descriptive study. *Lancet* 2020;395:507–13.
25. Barrasa H, Rello J, Tejada S, Martín A, Balziskueta G, Vinuesa C, et al. SARS-Cov-2 in Spanish Intensive Care: Early Experience with 15-day Survival In Vitoria. *Anaesth Crit Care Pain Med* 2020; Apr 9. doi: <https://doi.org/10.1016/j.accpm.2020.04.001>.
26. Yang X, Yu Y, Xu J, Shu H, Xia J, Liu H, et al. Clinical course and outcomes of critically ill patients with SARS-CoV-2 pneumonia in Wuhan, China: a single-

- centered, retrospective, observational study. *Lancet Respir Med* 2020; 8:475–81.
27. Rodriguez-Morales AJ, Cardona-Ospina JA, Gutiérrez-Ocampo E, Villamizar-Peña R, Holguin-Rivera Y, Escalera-Antezana JP, et al. Clinical, laboratory and imaging features of COVID-19: A systematic review and meta-analysis. *Travel Med Infect Dis* 2020;34: 101623.
 28. Cao Y, Liu X, Xiong L, Cai K. Imaging and clinical features of patients with 2019 novel coronavirus SARS-CoV-2: A systematic review and meta-analysis. *J Med Virol* 2020; 1-11.
 29. Fuentes E, Fuentes M, Alarcón M, Palomo I. Immune system dysfunction in the elderly. *An Acad Bras Cienc* 2017;89:285–99.
 30. Weyand CM, Goronzy JJ. Aging of the immune system: Mechanisms and therapeutic targets. *Annals of the American Thoracic Society* 2016; 15: S422–8.
 31. Liu K, Chen Y, Lin R, Han K. Clinical features of COVID-19 in elderly patients: A comparison with young and middle-aged patients. *J Infect* 2020;80: e14-8.
 32. CDC. Coronavirus Disease 2019 (COVID-19), 2020, <https://www.cdc.gov/coronavirus/2019-ncov/symptoms-testing/symptoms.html>(accessed May 25, 2020).
 33. CNN. Seniors with Covid-19 show unusual symptoms, doctors say, 2020, <https://edition.cnn.com/2020/04/23/health/seniors-elderly-coronavirus-symptoms-wellness-partner/index.html>(accessed May 25, 2020).
 34. WHO. Coronavirus disease (COVID-19) outbreak statement – Older people are at highest risk from COVID-19, but all must act to prevent community spread. Europe: World Health Organization, 2020.
 35. Financial Express. Coronavirus pandemic: Elderly more vulnerable to the disease; Here’s what doctors have to say, 2020. <https://www.financialexpress.com/lifestyle/health/coronavirus-pandemic-elderly->

- more-vulnerable-to-the-disease-heres-what-doctors-have-to-say/1938699/(accessed May 24, 2020)].
36. Wan S, Xiang Y, Fang W, Zheng Y, Li B, Hu Y, et al. Clinical Features and Treatment of COVID-19 Patients in Northeast Chongqing. *J Med Virol* 2020;92:797-806.
 37. Jin Zhang J, Dong X, yuan Cao Y, dong Yuan Y, bin Yang Y, qin Yan Y, et al. Clinical characteristics of 140 patients infected with SARS-CoV-2 in Wuhan, China. *Allergy Eur J Allergy Clin Immunol* 2020; 2:1–12.
 38. Zhu W, Xie K, Lu H, Xu L, Zhou S, Fang S. Initial clinical features of suspected coronavirus disease 2019 in two emergency departments outside of Hubei, China. *J Med Virol* 2020; Mar 13: 0–3.
 39. Chen G, Wu D, Guo W, Cao Y, Huang D, Wang H, et al. Clinical and immunologic features in severe and moderate Coronavirus Disease 2019. *J Clin Invest* 2020;130: 2620-9.
 40. Liu Y, Yang Y, Zhang C, Huang F, Wang F, Yuan J, et al. Clinical and biochemical indexes from 2019-nCoV infected patients linked to viral loads and lung injury. *Sci China Life Sci.* 2020;63:364–74.
 41. Mo P, Xing Y, Xiao Y, Deng L, Zhao Q, Wang H, et al. Clinical characteristics of refractory COVID-19 pneumonia in Wuhan, China. *Clin Infect Dis.* 2020; Mar 16: ciaa270.
 42. Jin X, Lian JS, Hu JH, Gao J, Zheng L, Zhang YM, et al. Epidemiological, clinical and virological characteristics of 74 cases of coronavirus-infected disease 2019 (COVID-19) with gastrointestinal symptoms. *Gut* 2020;69:1002-9.
 43. Guan W, Ni Z, Hu Y, Liang W, Ou C, He J, et al. Clinical Characteristics of Coronavirus Disease 2019 in China. *N Engl J Med* 2020;382:1708-20.
 44. Zhou Z, Zhao N, Shu Y, Han S, Chen B, Shu X. Effect of gastrointestinal symptoms

- on patients infected with COVID-19. *Gastroenterology* 2020; 158: 2294-7.
45. Du Y, Tu L, Zhu P, Mu M, Wang R, Yang P, et al. Clinical Features of 85 Fatal Cases of COVID-19 from Wuhan: A Retrospective Observational Study. *Am J Respir Crit Care Med* 2020;201:1372-9.
 46. Xu X, Yu C, Qu J, Zhang L, Jiang S, Huang D, et al. Imaging and clinical features of patients with 2019 novel coronavirus SARS-CoV-2. *Eur J Nucl Med Mol Imaging*. 2020;47:1275-80.
 47. Goyal P, Choi JJ, Pinheiro LC, Schenck EJ, Chen R, Jabri A, et al. Clinical Characteristics of Covid-19 in New York City. *N Engl J Med*. 2020;382: 2372-74.
 48. Yan CH, Faraji F, Prajapati DP, Boone CE, DeConde AS. Association of chemosensory dysfunction and Covid-19 in patients presenting with influenza-like symptoms. *Int Forum Allergy Rhinol* 2020;Apr 12: 1-8.
 49. Gupta N, Agrawal S, Ish P, Mishra S, Gaiind R, Usha G, et al. Clinical and epidemiologic profile of the initial COVID-19 patients at a tertiary care centre in India. *Monaldi Arch chest Dis*. 2020 Apr 10;90:193–6.
 50. Yang W, Cao Q, Qin L, Wang X, Cheng Z, Pan A, et al. Clinical characteristics and imaging manifestations of the 2019 novel coronavirus disease (COVID-19):A multi-center study in Wenzhou city, Zhejiang, China. *J Infect* 2020; 80:388–93.
 51. Han C, Duan C, Zhang S, Spiegel B, Shi H, Wang W, et al. Digestive Symptoms in COVID-19 Patients With Mild Disease Severity: Clinical Presentation, Stool Viral RNA Testing, and Outcomes. *Am J Gastroenterol* 2020; 115:916–23.
 52. Kim ES, Chin BS, Kang CK, Kim NJ, Kang YM, Choi JP, et al. Clinical course and outcomes of patients with severe acute respiratory syndrome coronavirus 2 infection: A preliminary report of the first 28 patients from the korean cohort study on COVID-19. *J Korean Med Sci* 2020;35:e142.

53. Wang L, He W, Yu X, Hu D, Bao M, Liu H, et al. Coronavirus disease 2019 in elderly patients: Characteristics and prognostic factors based on 4-week follow-up. *J Infect* 2020;80: 639-45.
54. Shi H, Han X, Jiang N, Cao Y, Alwalid O, Gu J, et al. Radiological findings from 81 patients with COVID-19 pneumonia in Wuhan, China: a descriptive study. *Lancet Infect Dis* 2020; 20:425–34.



PRISMA 2009 Flow Diagram

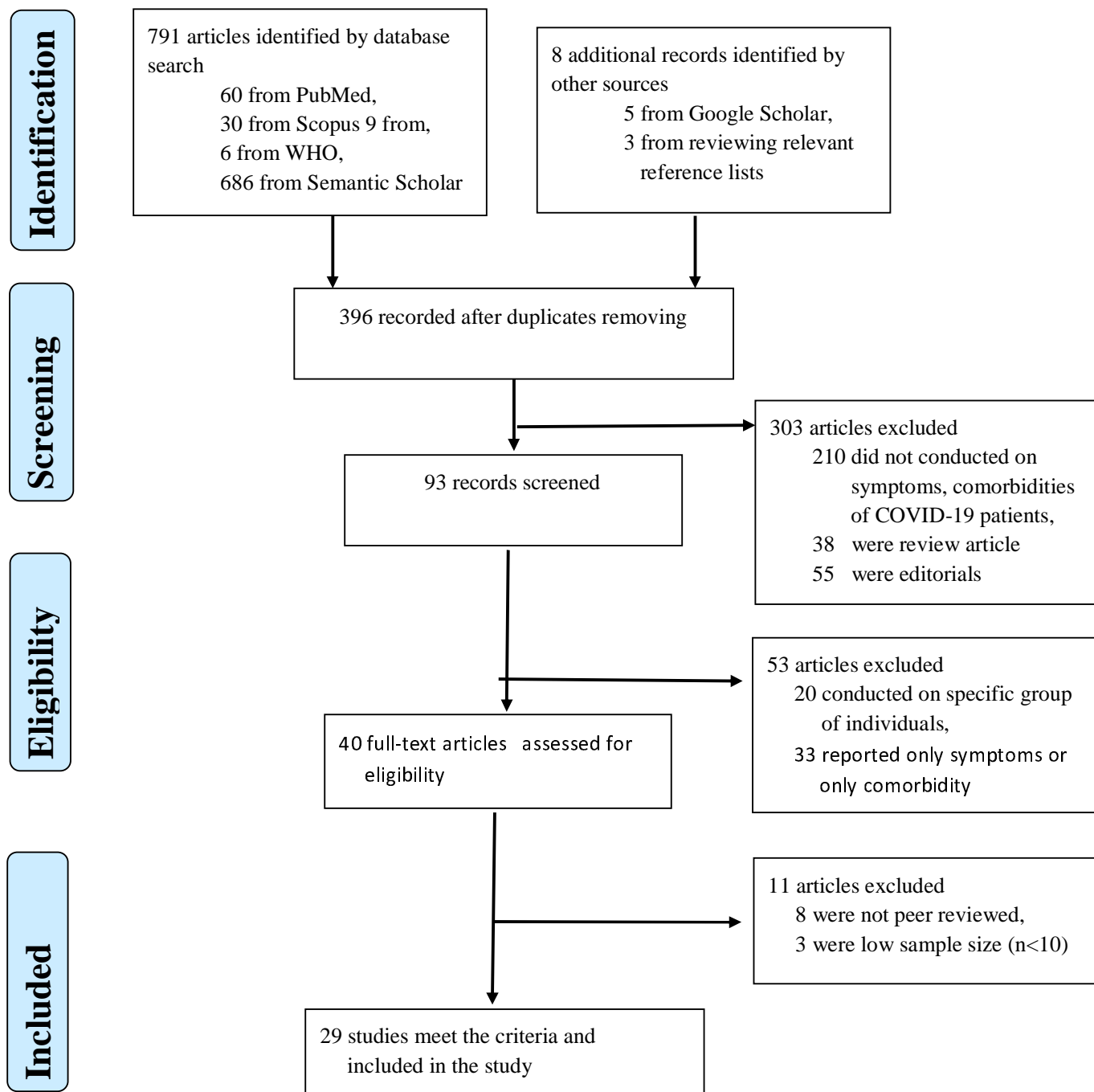


Figure 1. Preferred reporting items for systematic reviews and meta-analyses (PRISMA) flow diagram for the study selection process.

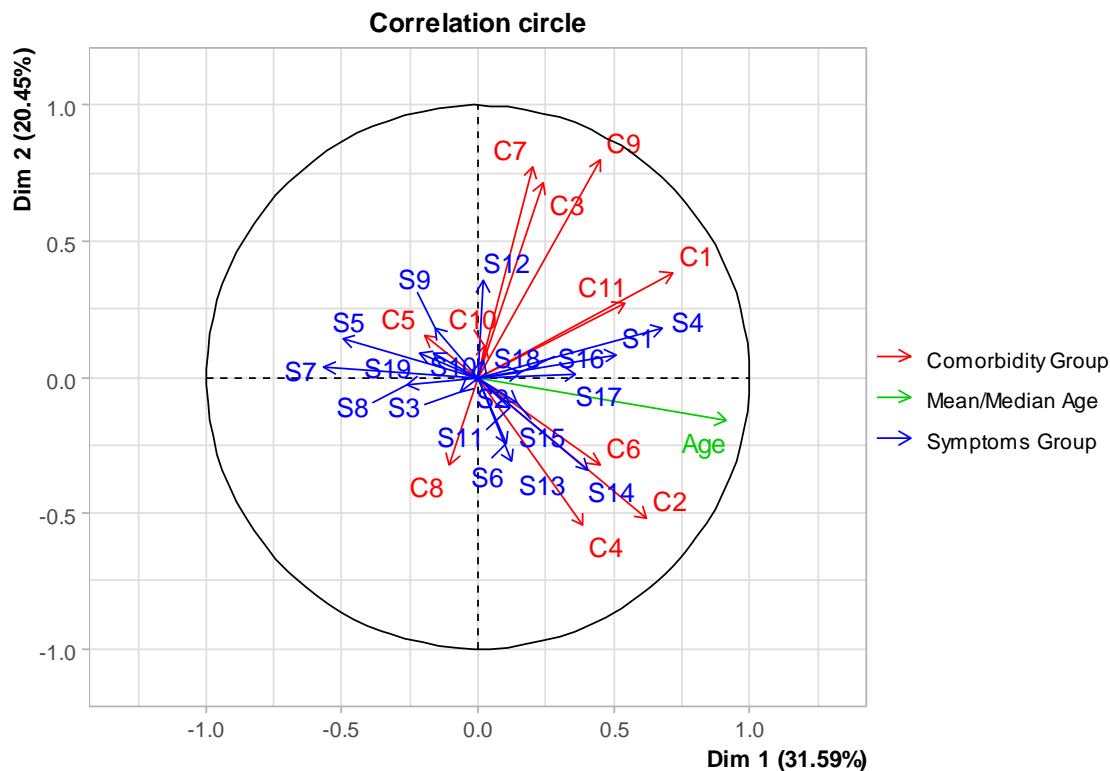


Figure 2. Group Integration [correlation] of symptoms and comorbidities with age of the COVID-19 patients. [**Symptom Group:** S1: Fever, S2: Cough/Dry cough, S3: Fatigue, S4: Dyspnea/Shortness of breath, S5: Headache, S6: Diarrhea, S7: Sore Throat, S8: Myalgia/Muscle Ache, S9: Rhinorrhea, S10: Sputum Production/Expectoration, S11: Chest tightness, S12: Chest pain, S13: Nausea, S14: Vomiting, S15: Abdominal Pain, S16: Dizziness, S17: Anorexia, S18: Pharyngalgia, S19: Haemoptysis. **Comorbidity Group:** C1: Diabetes, C2: Hypertension, C3: Cardiovascular Disease, C4: Coronary heart disease, C5: Cerebrovascular disease, C6: COPD/Lung disease, C7: Chronic liver disease, C8: Chronic Renal disease, C9: Chronic Kidney disease, C10: Malignancy, C11: ARDS.]