

COVID-19: Exhaled virus detected by Face Mask Sampling provides new links to disease severity and potential infectivity.

Caroline M. Williams^{1*}, Daniel Pan^{1*}, Jonathan Decker^{1*}, Anika Wisniewska¹, Shirley Sze², Eve Fletcher¹, Richard Haigh¹, Mohamad Abdulwhhab¹, Paul Bird^{1,3}, Christopher W. Holmes^{1,3}, Alaa Al-Taie⁴, Baber Saleem⁵, Jingzhe Pan (PhD)⁴ Natalie J. Garton (PhD)¹, Manish Pareek^{1^} and Michael R. Barer^{1^}.

** Joint First Authors*

^Joint Senior Authors

¹ *Department of Respiratory Sciences, University of Leicester, Leicester UK,* ² *Department of Cardiovascular Sciences, University of Leicester, Leicester UK,* ³ *Clinical Microbiology Department, University Hospitals of Leicester NHS Trust Leicester,* ⁴ *Department of Biomedical Engineering, Al-Nahrain University, Baghdad, Iraq,* ⁵ *Department of Engineering, University of Leicester, Leicester UK,*

Corresponding Authors: Caroline Williams cw329@le.ac.uk, Manish Pareek mp426@le.ac.uk and Mike Barer mrb19@le.ac.uk. Department of Respiratory Sciences, University of Leicester, University Road, Leicester, LE1 9HN, UK.

Total word count: 2973

Abstract (words 250)

Background

Nasopharyngeal samples (NPS) are the mainstay of COVID-19 diagnosis. However, the extent to which assay signals relate to exhaled virus is unknown. We investigated the use of novel, non-invasive face-mask sampling (FMS) to detect exhaled SARS-CoV-2 RNA in two studies.

Methods

In an outbreak study (cohort 1), we performed FMS and NPS for 21 consecutive days after diagnosis on six healthcare workers who were screened positive for SARS-CoV-2. In a second hospitalised cohort (cohort 2), we performed FMS on 47 patients within 24 hours of a positive diagnosis. COVID-19 severity was graded according to WHO recommendations.

Findings

In cohort 1, SARS-COV-2 was detected by FMS in 10/40 (25%) samples (4/6 individuals), with no correlation between NPS and FMS RNA signals. All samples were negative by day 14 post diagnosis. Sustained FMS positivity with higher viral RNA signals showed a trend towards disease severity.

In cohort 2, 19/47 (40%) individuals exhaled SARS-CoV-2 RNA extending over five orders of magnitude. FMS positive participants were older (positive: median age [IQR] 71 [61-84] vs negative: 61 [45-73], $p=0.04$) with more comorbidities (positive: 2 [1-3] vs negative: 1 [0-2], $p<0.001$) and have active cough (positive: 68% vs negative: 24%, $p=0.003$) and breathlessness (positive: 74% vs negative: 32%, $p=0.005$) during sampling, compared to FMS negative patients. Of five patients who were FMS positive and asymptomatic at time of sampling, two died of severe COVID-19 pneumonia within one month of follow up.

Interpretation

FMS detects exhaled SARS-COV-2, with stronger signals in those who develop severe disease.

Introduction

Infection with severe acute respiratory syndrome coronavirus-2 (SARS-CoV-2) was designated a global pandemic in 13th March 2020.(1) Transmission of SARS-CoV-2 is by exposure to respiratory secretions of close contacts.(2) Diagnosis by sampling of the respiratory tract is critical for the prevention of further transmission, while recognition of symptomatic disease (COVID-19) enables timely initiation of treatment.(3)

Nasopharyngeal samples (NPS) are the current standard sample used to detect SARS-CoV-2 as recommended by the World Health Organisation (WHO).(4) However, NPS has a number of disadvantages, including technical difficulty, risk to healthcare providers due to induction of sneezing/coughing, and physical discomfort for patients.(5) Wide variations in sensitivity have also been reported with NPS (32% to 65%) as well as oropharyngeal swabs (32% to 65%) and sputum (48% to >90%) with insufficient evidence for correlation of virus detection, or cycle threshold (Ct) PCR values from any of these sampling methods to severity of clinical disease or infectivity.(6-10)

Face-mask sampling (FMS) represents a novel method of respiratory sampling that is applicable in routine clinical practice, where masks are compulsory for patients and clinical staff. It is technically simple to use, minimises virus exposure to healthcare professionals, and more comfortable for patients compared to NPS. We have previously shown the ability of FMS to detect *Mycobacterium tuberculosis* exhaled by patients with pulmonary disease, informing the presence of active infection with greater consistency and at an earlier disease stage than with sputum samples.(11,12)

We therefore investigated use of FMS in patients with COVID-19. Here we describe two related observational studies. In the first cohort, FMS was used to measure exhaled SARS-COV-2 output compared with NPS during an occupational outbreak. Here, we aimed to determine whether FMS enabled detection and longitudinal monitoring of SARS-COV-2 expelled from the respiratory tract and whether there were differences in excretion patterns between individuals. In the second cohort we assessed a single mask sample's potential to detect exhaled SARS-COV-2 and relate this to participants' disease severity.

Methods

Study Populations

Outbreak study

We identified an outbreak of COVID-19 amongst healthcare workers in one clinical area of a large teaching hospital in the UK, through routine NPS in April 2020. We invited affected individuals to take part in repeated mask and NPS sampling.

Hospitalised cohort

We invited hospitalised patients from the three hospitals making up University Hospitals of Leicester NHS Trust to provide two mask samples within 48 hours of diagnosis between June and 2 July 2020. We enrolled individuals who were age ≥ 18 years, able to give consent, had no requirement for oxygen therapy by face mask or non-invasive ventilation and a confirmed diagnosis of SARS-CoV-2 by NPS.

Study Design and Ethics

The outbreak study was opportunistic and thus the sample size was dictated by the extent of the outbreak. For the hospital study we opted for a pragmatic sample size that could be recruited during a pandemic.

The outbreak study was undertaken using service evaluation permission for staff members and was confirmed not to require additional ethical approval. Hospitalised patients provided written informed consent and ethical approval for this study was given by the Health Research Authority (20/WM/0153).

Patient sampling and sample processing

Healthcare Workers positive for SARS-CoV-2

Each participant wore a mask containing polyvinyl alcohol (PVA) sampling matrix strips (figure S1) for 30 minutes and provided one contemporaneous NPS on days 1,3,5,7,10,14 and 21 following diagnosis by NPS on day 0.

Two exposed PVA strips were dissolved in molecular grade water (mH_2O) using a rotator mixer for 60 minutes. Viral RNA was then extracted using the QIAamp high volume Circulating Nucleic Acid kit (Qiagen, Germany) following the manufacturer's instructions.

Combined nose and throat swabs were collected using cotton swabs (Deltalab, Spain) and stored in a 2ml vial (Sarstedt, UK). Viral particles were released from the swab by vortexing into mH_2O , prior to addition of Qiagen RNeasy buffer (RNeasy Mini Kit; Qiagen, Germany) and carrier RNA (cRNA; supplied with the QIAamp high volume Circulating Nucleic Acid kit, Qiagen Germany). RNA was extracted using an RNeasy mini kit according to the manufacturer's instructions.

Patient demographics, clinical and radiological data

We recorded this cohort's demographics. Symptom data was collected at every time point. The WHO severity criteria was used to grade severity of disease:(13)

- Mild disease: those who were asymptomatic, or symptomatic patients that did not require oxygen or did not have findings of COVID-19 pneumonia on their chest x-ray
- Moderate disease – symptomatic patients who had findings of COVID-19 pneumonia on the chest x-ray but did not require oxygen
- Severe disease – symptomatic patients who required oxygen supplementation, regardless of chest x-ray findings.

Data on patient's observations, radiology and oxygen requirements were also collected when able. Patients were followed until 2nd August 2020; where we recorded whether the patient was dead or alive. Causes of death were ascertained by adjudication of death certificates.

Hospitalised patients positive for SARS-CoV-2

Under direct observation, each participant wore a mask containing a PVA sampling matrix (Figure S1) for between 10- 60 minutes, though for the majority was 30 minutes. The first sample was collected within 24 hours of the diagnostic swab by routine clinical analysis and a second collected 12-24 hours after.

Two exposed PVA strips were added to a mixture of mH₂O, Qiagen ACL buffer, Proteinase K, cRNA and our internal control virus (see below). This was vortexed, heated to 60°C for 30mins (outbreak cohort) or 70°C for 10min (hospitalised cohort) and centrifuged prior to the RNA extraction via the QIAamp high volume Circulating Nucleic Acid Kit as described earlier.

Patient demographics, clinical and radiological data

We routinely collected data on demographics, clinical symptoms, observations and radiology in this cohort of hospitalised patients. We graded severity of the patient's disease in three ways; whether they required oxygen at any point during hospital stay, their National Early Warning Score-2 (NEWS-2) at time of first FMS and by the WHO severity criteria.

Patients were followed until 2nd August 2020; where we recorded whether the patient was dead or alive. Causes of death were ascertained by adjudication of death certificates.

RT-qPCR for RNA detection

A positive control prepared from a strongly SARS CoV-2 positive swab provided a positive control included in every assay run. An internal control prepared from cultured Human Coronavirus HCoV-OC43 was added to each sample prior to RNA extraction. The run results were accepted if the internal and positive control values fell within 2 Cts of their individual mean.

RNA was detected and quantified using the QuantiNova Probe RT-PCR Kit (Qiagen, Germany) and a Rotor-Gene Q thermocycler (Qiagen, Germany). For the hospitalised cohort two target genes were used the E (Sarbeco) and RdRp-Hel (14,15) and for the outbreak cohort it was just the E assay.

Further detail is provided in the online supplement.

Statistical Analysis

Descriptive statistics were used to characterize the demographics, clinical symptoms and radiological findings of all patients. The independent *t*-test was used for continuous data. Fisher's exact test (less than five observations in each cell) or Pearson's chi-squared test (at least five observations in each cell) were used for nominal data and the Mann-Whitney U-test was used for non-parametric data to examine differences between those who tested positive and negative on FMS. Statistical analysis was performed using STATA version 14.2 (StataCorp, United States) and Excel version 2016 (Microsoft, Redmond, United States). A *p* value of <0.05 was considered statistically significant. Continuous variables are displayed as median and interquartile range (IQR).

Results

Preliminary Results

Assay performance is outlined in the online supplement. Technical sensitivity in RNA analysis was closely comparable to the multiple platforms used in our local diagnostic service. Quantitative recovery of captured virus from PVA gave Cts within 1 cycle of a contemporaneous water diluted control (not shown). Comparing the two viral targets assayed from FMS and swabs, the E gene appeared the more sensitive with 61 positives of which 44 were also positive by RdRp–Hel assay, while E assay was negative in only one sample for which RdRp–Hel was positive. E target Cts ranging from 17.69 to 36.34 were recorded indicating a 4×10^5 -fold difference in viral RNA output between positive participants. RNA signals were shown to be stable in PVA strips spiked with cultured SARS-CoV-2 stored over 7 days while assay of unprocessed, exposed PVA strips stored dry at room temperature indicated signal stability over 3 months (Table S2).

Outbreak Study

Characteristics of cohort

Of ten healthcare workers who were screened for SARS-CoV-2, one female and five males were diagnosed by routine diagnostic PCR (Aus Diagnostics, Chesham, UK) from NPS. The median age of this cohort was 29 years (range: 26-38), three participants (50%) were of Chinese ethnicity and three (50%) were white. Symptoms varied from asymptomatic to severe, as defined by the WHO COVID-19 disease severity classification. Table S3 (supplemental data) outlines their symptoms and oxygen requirements. All survived, though two continue to have anosmia (IDs 3 & 5) four months later and only one (ID 3) required hospitalisation for oxygen supplementation and treatment of sepsis.

Forty paired FMS and NPS samples were collected in the first 21 days of their illness (Figure 1). Day 1 samples were not collected for ID 3 and 4 due to delays in diagnostic confirmation from their initial clinical sample.

Comparison of longitudinal FMS and NPS samples

Table 1 shows the analysis of FMS and NPS using the E assay taken for this cohort over the first 10 days. By day 14 after the original diagnostic swab, all participants were negative by FMS and NPS. Ten out of the 40 samples taken from four of the participants were positive by FMS (IDs 1-4). One individual (ID 3) produced two FMS positive, NPS negative samples. Fifteen out of the forty NPS taken were positive, with two participants producing NPS positive samples with negative paired FMS samples (ID 4 & 5). One person did not test positive by either method for the duration of the sampling period (ID 6) in spite of their positive diagnostic NPS on day 0.

Individuals with samples showing higher levels of FMS-detected viral RNA (lower Ct values) and sustained positive FMS over time showed a trend towards greater disease severity. Ct values for FMS were higher compared to NPS values (median FMS Ct value: 32.5 [IQR:30.1-34.1] vs median NPS Ct value: 30.6 [IQR:25.1-32.1]). Where paired samples were positive there was no significant correlation between mask and NPS Ct values (N=8, $r^2=0.03$). FMS SARS-CoV-2 RNA burden decreased over time for all participants, a feature less apparent

with NPS results. Discordance was observed between FMS and NPS; the FMS was more likely to be positive in severe disease.

Hospitalised cohort

Characteristics of cohort

For this direct comparison study, 47 of the 438 patients screened were consented and enrolled (Figure 2). The median age of this cohort was 63 years (IQR: 49-77); 32 participants were male (68%); the majority (33 [70%] were white, 12 [25%] were Asian and two [5%] were Black). The cohort's clinical and demographic characteristics are summarised in Table 3.

Using the WHO disease severity criteria, 27 (57%) of the cohort had mild disease of which 18 (67%) were asymptomatic. Twenty-one (45%) participants had moderate disease and 7 (15%) had severe disease.

FMS positivity within the cohort

Twenty-seven (57%) participants were sampled twice. Two mask samples from two individuals were removed from the analysis due to unsatisfactory internal control assays resulting in 74 mask samples from 47 participants analysed.

Overall 29/74 FMS were positive from 19 participants with a median E Ct value of 31.8 (IQR: 27.0-33.8). Of those who gave two FMS, three (11%) had discordant results, two (ID01012, ID01045) negative to positive and one (ID01041) positive to negative, potentially related to their natural history infection. The FMS results of those participants with at least one mask positive are summarised in Table 2 using the RdRp-Hel and E assays.

Association of demographic and clinical variables with mask positivity

Older participants were more likely to have detectable exhaled SARS-CoV-2 RNA detected by FMS (median age 71 [IQR:61-84] for FMS positive, 61[45-73] for FMS negative). The following risk factors were also significantly associated with a positive FMS sample; cerebrovascular disease (FMS positive: 21%, FMS negative: 0%, $p=0.02$), immunosuppression (FMS positive: 37%, FMS negative: 7% $p=0.02$) and cardiac disease (FMS positive: 44%, FMS negative: 17% $p=0.04$ using E assay and neared significance with the overall cohort (FMS positive: 42% FMS negative: 18%, $p=0.07$). Increasing comorbidity was also associated with FMS positivity (median number of comorbidities for FMS positive patients: 2 (IQR 1-3), FMS negative: 1 [0-2] $p<0.001$). The majority of FMS positive individuals acquired their infection in hospital (FMS positive: 58% vs FMS negative: 21%, $p=0.03$).

Symptoms of cough and breathlessness were significantly associated with FMS positivity (FMS positive: 68% vs FMS negative: 25% $p=0.003$ for cough & FMS positive: 74% vs FMS negative 32%, $p=0.005$ for breathlessness respectively). Severity of lung involvement, whilst not significant for the overall cohort, was related to FMS positivity using the individual assays. A higher proportion of lungs occupied by ground-glass shadowing on the chest x-ray was associated with a higher likelihood of a positive FMS using the RdRp-Hel assay (for participants who had over two-thirds of their lungs occupied by ground glass changes on chest x-ray, 43% were FMS positive and 7% were FMS negative, $p=0.003$ table S4). A lower Ct value (and therefore higher viral burden) was observed in those who were FMS positive by the E assay (Median Ct value for patients who had over 50% of their lungs occupied by

ground glass changes on the chest x-ray: 29.12, IQR 26.81-30.88 vs less than 50%: 33.84, IQR 32.79-35.09, $p=0.01$ table S5). Five patients were FMS positive and asymptomatic at time of sampling. Two of these patients subsequently developed respiratory symptoms and died of COVID-19 ; the only two who died in our cohorts.

Sex and ethnicity was not associated with FMS positivity ($p=0.2$ & $p=1.0$). Furthermore, mask captured output was not related to WHO criteria or NEWS-2 score ($p=0.37$ & $p=0.19$).

Discussion

In these studies, we provide the first insights into exhaled SARS-CoV-2 RNA, isolated directly from infected individuals by FMS. We show that FMS can detect viral RNA both at the time of diagnosis and up to 10 days thereafter and that signals identified from FMS can range over five orders of magnitude. Exhaled SARS-CoV-2 signals were more likely to be present in older patients, with multi-morbidity and in those with active respiratory symptoms at time of sampling.

FMS detected SARS-CoV-2 RNA directly from exhaled breath of both healthcare workers and hospitalised patients with confirmed COVID-19. We observed a 40% FMS positivity rate in our hospitalised cohort; in our outbreak cohort this was higher (4/6 66%), though this difference most likely reflected the small sample size. The E assay was more sensitive than the RdRp-Hel, identifying five more mask positives in our hospitalised cohort and one in our outbreak cohort.

Within our outbreak cohort, the NPS results were consistent with the findings of Arons *et al* who found that viral loads detected by NPS were similar over 7 days regardless of clinical disease severity.(16) However, we found that healthcare workers were more likely to exhale virus if they had severe disease. In contrast to our own NPS Ct values, which did not convincingly change over time, the Ct values obtained by FMS consistently increased over the course of patients' disease.

Within our hospitalised cohort participants who had radiological evidence of severe disease, and established risk factors for worse outcome were more likely to have detectable exhaled virus. FMS positivity also showed potential in predicting development of Covid-19 pneumonia in those who were asymptomatic at time of sampling.

We aimed here to assess use of FMS in the COVID-19 pandemic with simple outcome measurements. Future studies should focus on further investigation of whether FMS could detect SARS-CoV-2 RNA in individuals who are pre-symptomatic, and predict hospitalisation. Since FMS captures exhaled virus, it also has the potential to quantify the amount of infectious virus emitted and may therefore assess infectiousness of individuals; a potentially valuable tool in both understanding and halting SARS-CoV-2 transmission.

Limitations

In order to use FMS, we included only patients who did not require oxygen delivered by facemask, non-invasive or invasive ventilation at the time of sampling. We also focused on hospitalised patients in the larger study, which lead to a limited spectrum of disease; the majority of our patients had mild COVID-19 infection. This meant applying assessment criteria such as the NEWS-2 or WHO severity criteria was problematic.

Whilst the WHO criteria have not been validated for clinical outcome, it was chosen alongside NEWS-2 as it is simple, clinically plausible, globally accepted and deployed in both high and low resource settings; settings where FMS can be easily deployed. There was a significant proportion of hospital-acquired SARS-CoV-2 in our second cohort and therefore our clinical outcomes were complicated by other causes of hospital admission.

Although comparable in number to our other FMS studies, the sample size in both studies was small. As such, extrapolation of our findings should be done with caution and larger

studies are indicated. This limited sample size potentially explains the difference observed between the associations of clinical phenotype with the two gene assays (E and RdRp-Hel).

Finally, as is well recognised, RNA signals do not equate to the presence of replication competent and likely infectious viral particles. We note that virus can be recovered in cell culture from our PVA strips (data not shown) and that it will be important to correlate RNA signals with replication-competent virus levels in the future.

Conclusion

FMS offers a novel, clinically compatible approach that captures exhaled SARS-CoV-2 directly from infected individuals and is related to disease severity. Exhaled virus is potentially related to infectivity, thus FMS could facilitate identification of contacts at high risk of infection and wider public health control efforts.

Acknowledgements

We would like to acknowledge the staff and patients of University Hospitals of Leicester, without whom we could not have carried out these studies. Many thanks to the University of Leicester's CBS C3 Facility for allowing access to the C3 for SARS-COV-2 work. We would also like to acknowledge the support and guidance given to us by Dr Julian Tang and Dr David Jenkins in setting up this project. Finally we acknowledge support from Ed Farries and the team at Qiagen, who kindly donated initial reagents and equipment for the in-vitro work.

Funding

MP is funded by a NIHR Development and Skills Enhancement Award and is supported by NIHR Leicester Biomedical Research Centre (BRC). DP and SS are supported by the NIHR. Funding for this project came from the University of Leicester LD3/MRC CiC. for access to the CBS C3 Facility and for funding from the Univeristy'sLD3/MRC CiC.

Conflict of Interest

Dr. Pareek reports grants and personal fees from Gilead Sciences and personal fees from QIAGEN, outside the submitted work.

References

- (1) WHO. Rolling updates on coronavirus disease (COVID-19). Updated 31 July 2020. <https://www.who.int/emergencies/diseases/novel-coronavirus-2019/events-as-they-happen>. Accessed 17th August 2020
- (2) Chan JF, Yang S, Kok KH *et al*. A familial cluster of pneumonia associated with 2019 novel coronavirus indicating person-to-person transmission; a study of family cluster. *Lancet* 2020; **395**: 514-523
- (3) Mohamadi A, Esmailzadeh E, Li Y *et al*. SARS-CoV-2 detection in different respiratory sites: a systematic review and meta-analysis. *EBioMedicine* 2020 102903
- (4) WHO. Laboratory testing of 2019 novel coronavirus (2019-nCoV) in suspected human cases. Interim guidance. <https://www.who.int/publications-detail/laboratory-testing-for-2019-novel-coronavirus-in-suspected-human-cases-20200117>.. Accessed 17th August 2020
- (5) Marty FM, Chen K, Verrill KA *et al*. How to obtain an nasopharyngeal swab specimen. *New England Journal of Medicine* 2020; **382**:e76
- (6) Yu F, Yan L, Wang N *et al*. Quantitative detection and viral load analysis of SARS-CoV-2 in infected patients. *Clinical Infectious Diseases* 2020
- (7) Kim ES, Chin BS, Kang CK *et al*. Clinical course and outcomes of patients with severe acute respiratory syndrome coronavirus 2 infection: a preliminary report of the first 28 patients from the Korean cohort study on COVID-19 *Journal of Korean Medical Sciences* 2020; **35**: e142
- (8) Wang W, Xu Y, Gao R *et al*. Detection of SARS-CoV-2 in different clinical specimens. *JAMA*. 2020; **323**:1843-1844
- (9) Wu J, Liu J, Li S *et al*. Detection and analysis of nucleic acid in various biological samples of COVID-19 patients. *Travel Med Infect Dis*. 2020; 101673
- (10) Chang JF, Yip CC, To KK *et al*. Improved molecular diagnosis of COVID-19 by the novel, highly sensitive and specific COVID-19-RdRp/Hel Real-Time Reverse Transcription-PCR assay validated in vitro and with clinical specimens. *Journal of Clinical Microbiology*. 2020; **58**
- (11) Williams CM, Abdulwhhab M, Birring SS *et al*. Exhaled *Mycobacterium tuberculosis* output and detection of subclinical disease by face-mask sampling: prospective observational studies. *The Lancet Infectious Diseases* 2020; **20**:607-617
- (12) Williams CM, Chea ES, Malkin J *et al*. Face mask sampling for the detection of *Mycobacterium tuberculosis* in expelled aerosols. *PLoS One*. 2014; **9**e104921
- (13) WHO. Clinical management of COVID-19. Interim guidance; updated 27th May 2020. <https://www.who.int/publications/i/item/clinical-management-of-covid-19>. Accessed 17th August 2020
- (14) Corman, V. M., O. Landt, M. Kaiser, R. Molenkamp, A. Meijer, D. K. W. Chu, T. Bleicker, S. Brunink, J. Schneider, M. L. Schmidt, D. Mulders, B. L. Haagmans, B. van der Veer, S. van den Brink, L. Wijsman, G. Goderski, J. L. Romette, J. Ellis, M. Zambon, M. Peiris, H. Goossens,

C. Reusken, M. P. G. Koopmans and C. Drosten (2020). "Detection of 2019 novel coronavirus (2019-nCoV) by real-time RT-PCR." Eurosurveillance **25**(3): 23-30.

(15) Chan, J. F., C. C. Yip, K. K. To, T. H. Tang, S. C. Wong, K. H. Leung, A. Y. Fung, A. C. Ng, Z. Zou, H. W. Tsoi, G. K. Choi, A. R. Tam, V. C. Cheng, K. H. Chan, O. T. Tsang and K. Y. Yuen (2020). "Improved Molecular Diagnosis of COVID-19 by the Novel, Highly Sensitive and Specific COVID-19-RdRp/Hel Real-Time Reverse Transcription-PCR Assay Validated In Vitro and with Clinical Specimens." J Clin Microbiol **58**(5): e00310-20.

(16) Arons MM, Hatfield KM, Redd SC *et al.* Presymptomatic SARS-CoV-2 infections and transmission in a skilled nursing facility. *New England Journal of Medicine* 2020; 2081-2090

Screening/Enrolment

Category:

Screened for Eligibility:

Individuals working in the clinical team
N= 10

SARS-COV-2 Negative by NPS N=4

Confirmed Eligible:

Individuals taking part in study N=6

Follow up:

Sampling taken on Day 1, 3, 5, 7, 10, 14 and 21 following clinical diagnosis

D1 samples not taken as clinical diagnosis delayed
N=2

Samples collected:

30 minute
FMS
N=40

NPS
N=40

Symptom
questionnaire
N= 42

Figure 1. Pilot Outbreak Study profile. NPS – Nasopharyngeal Swab FMS – Face Mask Sampling

Screening/Enrolment

Category:

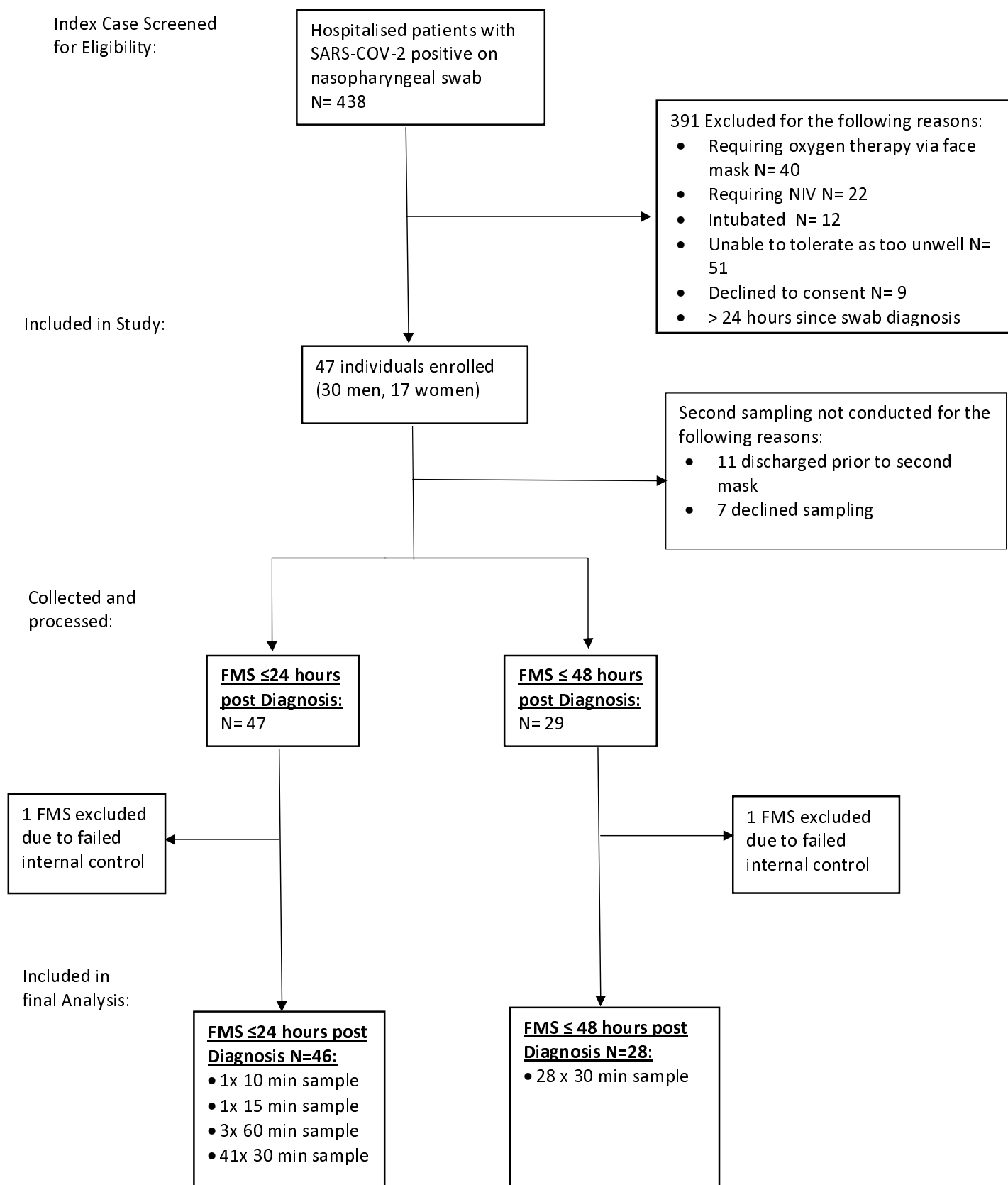


Figure 2. Study 2 profile. FMS – Face Mask Sampling NIV – Non invasive Ventilation

ID	WHO Disease Severity Score	FMS						NPS				
		D1	D3	D5	D7	D10		D1	D3	D5	D7	D10
3	Severe	ND	26.8	29.5	30.3	34.1		ND	22.1	-ve*	30.3	-ve*
1	Moderate	31.2	34.2	33.6	-ve	-ve		33.6	25.1	30.6	32.1	-ve
2	Moderate	32.4	34.2	-ve	-ve	-ve		25.0	24.0	30.6	34.0	-ve
4	Mild	ND	32.7	-ve	-ve	-ve		ND	29.8	-ve	34.4	-ve
5	Mild	-ve	-ve	-ve	-ve	-ve		27.1	30.7	32.1	-ve	-ve
6	Asymptomatic	-ve	-ve	-ve	-ve	-ve		-ve	-ve	-ve	-ve	-ve

Table 1. E-directed RT-PCR Ct values from serial Face Mask and Nasopharyngeal Swab samples taken from healthcare workers with confirmed COVID-19 infection ranked by symptom scores. A decrease in Ct of one cycle approximates to a two-fold increase in detected viral RNA. All samples from day 14 and 21 were negative for all participants. ND – Not done, FMS- Face Mask Sampling, NPS – Nasopharyngeal Swab. *Contemporaneous FMS positive.

PtID	Sample No.	E Assay Ct	RdRp-Hel Ct
01001*	1	32.79	Negative
01002*	1	28.33	30.36
01003*	1	25.26	27.1
	2	18.6	20.03
01004*	1	29.05	31.12
	2	32.7	34.59
01005	1	31.3	32.5
01006	1	31.7	33.8
	2	31.8	33.6
01008	1	31.76	33.6
	2	24	26.15
01009	1	24.85	26.3
	2	17.69	19
01012*	1	Negative	Negative
	2	35.75	Negative
01014	1	33.83	34.8
	2	36.34	Negative
01021	1	34.22	34.82
	2	25.6	27.4
01026	1	33.84	Negative
01027	1	30.2	32.5
	2	26.5	27.9
01029	1	26.81	28.9
01032	1	34.16	Negative
01035	1	34.02	Negative
	2	33.39	33.34
01041	1	34.29	34.86
	2	Negative	Negative
01044	1	27.13	28.49
	2	32.71	34.3
01045	1	Negative	Negative
	2	Negative	34.97

Table 2. E- and RdRp-Hel- directed RT-qPCR Ct values from positive Face Mask Samples taken from individuals SARS-CoV-2 positive by NPS taken 24-48 earlier. * Individuals considered asymptomatic with respect to COVID-19.

Variable	Total (n=47)	Mask positive (n=19)	Mask negative (n=28)	P value
Age (years)	63 (49-84)	71 (61-84)	61 (45-73)	0.04
Male	30 (67%)	15 (79%)	15 (58%)	0.20*
Female	15 (33%)	4 (21%)	11 (42%)	
Ethnicity				1*
White	33 (70%)	14 (74%)	19 (73%)	
Asian	12 (25%)	4 (21%)	6 (23%)	
Black	2 (5%)	1 (5%)	1 (4%)	
Symptomatic				
Fever	19 (40%)	8 (42%)	11 (39%)	0.85
Cough	20 (43%)	13 (68%)	7 (25%)	0.003
Breathlessness	23 (49%)	14 (74%)	9 (32%)	0.005
Arthralgia	8 (17%)	4 (21%)	4 (14%)	0.70*
Fatigue	10 (21%)	5 (26%)	5 (18%)	0.49
Anosmia	6 (13%)	2 (11%)	4 (14%)	1*
Asymptomatic	18 (38%)	5 (26%)	13 (46%)	0.16
Duration of symptoms (days)	6 (4-7)	5 (2-7)	6 (6-7)	0.14**
How patients were infected				0.03*
Occupational	3 (6%)	2 (11%)	1 (4%)	
Household	8 (18%)	1 (5%)	7 (25%)	
Hospital	17 (36%)	11 (58%)	6 (21%)	
Community	2 (4%)	1 (5%)	1 (4%)	
Unknown	17 (36%)	4 (21%)	13 (46%)	
Clinical Frailty Scale				0.28
Not frail (1-3)	23 (49%)	7 (37%)	16 (57%)	
Mildly frail (4-5)	8 (17%)	2 (11%)	6 (21%)	
Moderately frail (6)	8 (17%)	5 (26%)	3 (11%)	
Severely frail (7-9)	8 (17%)	5 (26%)	3 (11%)	
Comorbidities				
Diabetes	11 (23%)	6 (32%)	5 (18%)	0.31
Hypertension	16 (34%)	9 (47%)	7 (25%)	0.11
Cardiac disease	13 (28%)	8 (42%)	5 (18%)	0.07
Chronic kidney disease	4 (9%)	2 (11%)	2 (7%)	1*
Chronic liver disease	9 (19%)	5 (26%)	4 (14%)	0.45
Cerebrovascular disease	4 (9%)	4 (21%)	0 (0%)	0.02*
Immunosuppression	9 (19%)	7 (37%)	2 (7%)	0.02
Number of comorbidities	1 (0-2)	2 (1-3)	1 (0-2)	<0.001**
Smoker				1*
Active smoker	2 (4%)	1 (5%)	1 (4%)	
Ex-smoker	6 (13%)	2 (11%)	4 (14%)	
Never smoked	39 (83%)	16 (84%)	23 (82%)	
Observations				
Respiratory rate (breaths per minute)	18 (17-19)	18 (17-19)	18 (17-20)	0.91**
Nasal cannula	10 (21%)	4 (21%)	6 (21%)	1*
Requiring oxygen at any point during hospital stay	17 (36%)	5 (26%)	12 (43%)	0.24
Chest x-ray/CT findings				
Infiltrates	33 (80%)	14 (78%)	19 (82%)	0.71*
Bilateral infiltrates	25 (61%)	11 (61%)	14 (61%)	1*
Extent of CXR findings of COVID-19 pneumonia				0.17*
No findings	8 (20%)	4 (22%)	4 (17%)	
Mild	12 (29%)	3 (17%)	9 (39%)	
Moderate	13 (31%)	5 (28%)	8 (35%)	
Severe	8 (20%)	66 (33%)	2 (9%)	
NEWS2 score	1 (0-3)	1 (0-2)	2 (0-3)	0.19**
WHO severity score				
Mild	19 (40%)	9 (47%)	10 (36%)	0.37*

Moderate	21 (45%)	9 (47%)	12 (43%)	
Severe	7 (15%)	1 (6%)	6 (21%)	

Table 3. Clinical characteristics for hospitalised participants infected with COVID-19, compared by Face Mask result. *Fisher's exact test; ** Mann-Whitney U-test

