

1 **Full Title: COVID-19 ICU and mechanical ventilation patient characteristics and**
2 **outcomes - A systematic review and meta-analysis**

3
4 **Short Title: COVID-19 ICU and mechanical ventilation characteristics and**
5 **outcomes**

6
7 Raymond Chang^{1¶*}, Khaled Mossad Elhousseiny^{2¶}, Yu-Chang Yeh^{3&}, Wei-Zen Sun^{1,3&}

8
9 1. Institute of East-West Medicine, New York, NY 10016, USA

10
11 2. Faculty of Medicine, Al-Azhar University, Cairo, Egypt

12
13 3. Dept of Anesthesia, National Taiwan University Hospital, Taipei, Taiwan

14
15
16 *Corresponding author : Raymond Chang chang@meridianmedical.org

17
18 ¶ These authors contributed equally to the work

19 & These authors also contributed equally to the work

20
21
22 **Abbreviations:** AKI, acute kidney injury; ALT, alanine aminotransferase; AST, aspartate
23 aminotransferase; ARDS, acute respiratory distress syndrome; CI, confidence interval; COPD, chronic
24 obstructive pulmonary disease; COVID-19, coronavirus disease of 2019; CVD, cardiovascular disease;
25 CRP, C-reactive protein; DM, diabetes mellitus; HTN, hypertension; ICNARC, Intensive Care National
26 Audit and Research Center; ICU, intensive care unit; IMV, invasive mechanical ventilation; LDH,
27 lactate dehydrogenase; LoS, length of stay; pER, pooled event rate; pOR, pooled odds ratio; PT,
28 prothrombin time; RRT, renal replacement therapy; SARS-CoV-2, severe acute respiratory syndrome
29 coronavirus 2; WBC, white blood cell count; WHO, World Health Organization.

30

31

32

33

34

35

36

37

38

39

40

41

42 **Conflict of Interest:** The authors report no conflicts of interests.

43

44

45 **Keywords:** COVID-19, SARS-CoV-2, ICU, mechanical ventilation, mortality, outcomes, meta-
46 analysis

1

1

47 **ABSTRACT**

48 **Background**

49 Insight into COVID-19 intensive care unit (ICU) patient characteristics, rates and risks of
50 invasive mechanical ventilation (IMV) and associated outcomes as well as any regional discrepancies
51 is critical in this pandemic for individual case management and overall resource planning.

52

53 **Methods and Findings**

54 Electronic searches were performed for reports through May 1 2020 and reports on COVID-19
55 ICU admissions and outcomes were included using predefined search terms. Relevant data was
56 subsequently extracted and pooled using fixed or random effects meta-analysis depending on
57 heterogeneity. Study quality was assessed by the NIH tool and heterogeneity was assessed by I^2 and Q
58 tests. Baseline patient characteristics, ICU and IMV outcomes were pooled and meta-analyzed. Pooled
59 odds ratios (pOR) were calculated for clinical features against ICU, IMV mortality. Subgroup analysis
60 was carried out based on patient regions. A total of twenty-eight studies comprising 12,437 COVID-19
61 ICU admissions from seven countries were meta-analyzed. Pooled ICU admission rate was 21% [95%
62 CI 0.12-0.34] and 69% of cases needed IMV [95% CI 0.61-0.75]. ICU and IMV mortality were 28.3%
63 [95% CI 0.25-0.32], 43% [95% CI 0.29-0.58] and ICU, IMV duration was 7.78 [95% CI 6.99-8.63] and
64 10.12 [95% CI 7.08-13.16] days respectively. Besides confirming the significance of comorbidities and
65 clinical findings of COVID-19 previously reported, we found the major correlates with ICU mortality
66 were IMV [pOR 16.46, 95% CI 4.37-61.96], acute kidney injury (AKI) [pOR 12.47, 95% CI 1.52-
67 102.7], and acute respiratory distress syndrome (ARDS) [pOR 6.52, 95% CI 2.66-16.01]. Subgroup
68 analyses confirm significant regional discrepancies in outcomes.

69

70 **Conclusions** This is the most comprehensive systematic review and meta-analysis of COVID-19 ICU
71 and IMV cases and associated outcomes to date and the only analysis to implicate IMV's associtaion
72 with COVID-19 ICU mortality. The significant association of AKI, ARDS and IMV with mortality has
73 implications for ICU resource planning for AKI and ARDS as well as research into optimal ventilation
74 strategies for patients. Regional differences in outcome implies a need to develop region specific
75 protocols for ventilatory support as well as overall treatment.

76

77

78

79

80

81

82

83

84

85

86

87

88

89

90

91

92

93 **INTRODUCTION**

94 Since its inception, the Coronavirus 2019 (COVID-19) pandemic has placed unprecedented strain on
95 healthcare globally with intensive care unit (ICU) care and ventilator availability being focal points of
96 health resource allocation and planning. Understanding COVID-19 ICU and associated invasive
97 mechanical ventilation (IMV) patient characteristics and outcomes as well as appreciating their
98 regional variations is thus critically important for patient management as well as resource planning.
99 Despite an increasing number of studies relating to various aspects of severe COVID-19 and its ICU
100 management; discrepancies in size, methodologies and research focus as well as regional differences in
101 these studies calls for a comprehensive systematic review and analysis of reports to date.

102 **METHODS**

103 **Search strategy**

104
105 Our review was conducted according to PRISMA guidelines [1] (S1 Table). We searched Pubmed,
106 Scopus, Embase, preprint servers bioRxiv and medRxiv and the Intensive Care National Audit and
107 Research Center (ICNARC) website for publications through May 1st 2020. A hand search through
108 referenced published studies was additionally performed. Search terms used were ("COVID-19" OR
109 "SARS-Cov-2") AND ("ICU" or "ventilator" OR "mechanical ventilation" OR "critical care" OR
110 "intensive care" OR "hospitalized" OR "outcomes"). The study protocol was registered with the
111 International Prospective Register of Systematic Reviews (PROSPERO CRD42020182482).

112
113

114 **Selection criteria**

115
116 Studies reporting COVID-19 cases and their ICU admissions and IMV outcomes were included. Case
117 reports, abstracts, or studies without outcomes were excluded. Two authors (RC and KME)
118 independently screened titles and abstracts of retrieved studies and reviewed full-texts for further
119 inclusion. Studies with larger outcome samples from same hospitals were analyzed to avoid patient

120 overlaps; however, studies with overlapped patients but distinct outcome measures were meta-analyzed
121 for those outcomes.

122
123

124 **Data extraction**

125

126 Data extracted independently by two authors (RC and KME) into Excel (Microsoft) included study
127 characteristics and patient clinical characteristics, and outcomes.

128
129

130 **Quality assessment**

131

132 Two authors (RC and KME) independently assessed the risk of bias of included studies utilizing the
133 NIH quality assessment tool for observational cohorts [2]. The overall assessment was good, fair, or

134 poor. Disagreements were resolved by discussion between all authors.

135
136

137 **Data analysis**

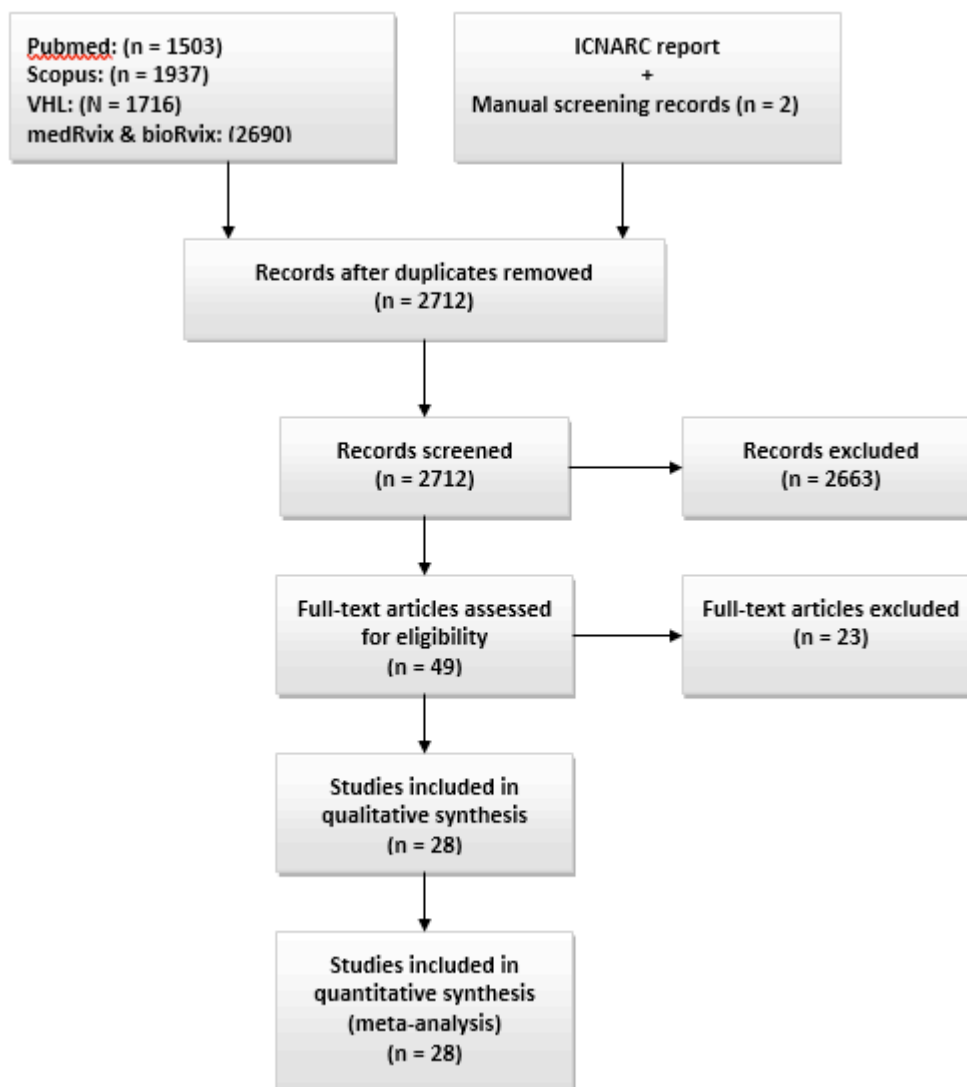
138 Meta-analysis was conducted when there were two or more studies for the same outcome using
139 Comprehensive Meta-analysis (CMA) software version 3. The pooled event rate (pER) was used to
140 meta-analyze the prevalences of patient characteristics, rates of ICU admissions and IMV, and ICU and
141 IMV mortalities. Pooled odds ratio (pOR) was used to assess the association between clinical features
142 and outcomes. Pooled mean or weighted mean differences with 95% confidence intervals (95% CI)
143 were used in meta-analysis of continuous outcomes. We used the fixed-effect model unless there was
144 evidence of heterogeneity, in which case the random-effects model was used. Heterogeneity was
145 determined using I^2 and Q test [3,4] and was considered significant if the P-value of the Q test is <0.1
146 and/or $I^2 >50\%$. The corresponding 95% CI of the pooled effect size was calculated. Subgroup analysis
147 were done on patient region, overall quality, and publication type (pre-print vs. peer-reviewed) to
148 investigate the heterogeneity amongst studies. Publication bias was assessed using Egger's regression
149 test and funnel plots for outcomes with five or more studies, and was considered significant if Egger's

150 regression P-value is <0.1 [5,6]. When a mean value of a continuous outcome was missing, methods by
151 Wan [7] were utilized to impute the needed value for the meta-analysis. Since some studies [8,9,10-
152 17,18-23] included patients still hospitalized at endpoint (n=4,697, 37.8%), we considered two
153 mortality scenarios methodologically: (1) best case scenario by pooling patients with known outcome
154 and (2) worst case scenario by pooling those still hospitalized with non-survivors.

155 **RESULTS**

156 **Search results**

157
158 We retrieved 7846 studies and removed 5134 duplicates and remaining articles were screened to yield
159 49 studies for full-text review (Figure 1). Twenty-eight studies were finally included and 16 were peer-
160 reviewed, 11 were preprints, while one was an online report [24].
161



162
163
164 **Fig 1. PRISMA flow diagram.** PRISMA diagram depicting study selection process

165
166
167 **Characteristics of studies and patients (Table 1)**

168
169 All included studies were observational and comprised 12,437 ICU patients admitted between
170 December 2019 to May 1 2020. Of these, 6,875 patients were on IMV. Nine studies were from the USA
171 [8-11,17,18,23,25,26], 13 from China [12,14,16,20-22,27-33], two from the UK [24,32], and one each
172 from Italy [15], Spain [13], France [19], and Mexico [35].

173
174 **Risk of bias assessment (Table 1)**

175 Fifteen studies were good and 13 were fair as assessed by the NIH tool. Follow-up duration was
 176 insufficient or unreported in seven [8,10,12,14,26,29,35] among which three had fair assessments. Of
 177 note, 14 studies [8,9,12-15,17-19,21,22,24,25,34] had over 20% of patients with unknown outcome at
 178 endpoint of which 8 had fair assessment.

179

Reference ID (First author, publication month 2020)	Number of patients		Mean age \pm SD	Gender (male) [n (%)]	Overall quality assessment
	ICU admitted	IMV patients in ICU			
China					
Bi/April [12]	19	18	(30-70) ^a	14/19 (74)	Good
Cao/May [28]	18	14	NM	NM	Good
Du/April [27]	51	33	68.4 \pm 9.7	34/51 (71)	Good
Feng/April [14]	29	22	64 \pm 13.4	71/114 (62)	Good
Guan/February [29]	55	25	63 (53-71) ^b	NM	Good
Huang/January [32]	13	4	49(41-61) ^b	11/13 (85)	Good
Lapidus/April [16]	59	40	62(52-70) ^b	38/59 (64)	Fair
Lei/April [30]	15	---	55(44-74) ^b	5/15 (33)	Fair
Wang/April [33]	344	100	64 (52-72) ^b	179/344 (52)	Good
Xu/March [21]	45	20	56.7 + 15.4	29/45 (64)	Good
Yang/February [31]	52	22	59.7 \pm 13.3	35/52 (67)	Good
Zheng/April [22]	34	15	66(58-76) ^b	23/34 (68)	Fair
Zhou/March [20]	50	32	NM	NM	Good
USA					
Arentz/March [8]	21	15	70 (43-92) ^a	11/21 (52)	Fair
Argenziano/April [9]	231	215	62.2 \pm 14.7	156/231 (68)	Good
Auld/April [10]	217	165	64(54-73) ^b	119/217 (55)	Fair
Bhatraju/March [11]	24	---	64 \pm 18	15/24 (63)	Good

Goyal/May [26]	----	130	64.5 (51.7–73.6) ^b	92/130 (71)	Fair
Myers/April [17]	113	103	63 (53-73) ^b	74/113 (66)	Good
Paranjpe/April [25]	385	----	NM	NM	Good
Richardson/April [18]	1281	1151	63 (52-75) ^b	3437/5700(60)	Good
Ziehr/April [23]	66	66	58 (23-87) ^b	43/65 (65)	Good
UK					
ICNARC/May [24]	7542	4522/6880	59.3±12.5	5389/ 7538 (72)	Good
Docherty/April [34]	1914/11185	497	72(57-82)	NM	Fair
Mexico					
Valente-Acosta/May [35]	33	12	60.6±12.68	23/33 (70)	Good
Italy					
Grasselli/April [15]	1591	1150	63 (56-70) ^b	1304/1591 (82)	Good
Spain					
Borobia/May [13]	237	----	64(54–71) ^b	57/75 (76)	Good
France					
Simonnet/April [19]	124	----	60 (51-70) ^b	90/124 (73)	Good

180

181 **Table 1. COVID-19 ICU study regions, ICU admitted and IMV patient number and**

182 **demographics , and study quality assesment.** Studies based on reporting region and identified by

183 first author and 2020 publication month, the number of ICU admitted and IMV patients in ICU and

184 their age and sex as reported per study; and overall quality assesment of the studies by the NIH

185 quality assessment tool [2]. Abbreviations: NM= Not mentioned, a = Data range, b =Data are reported

186 as median (IQR).

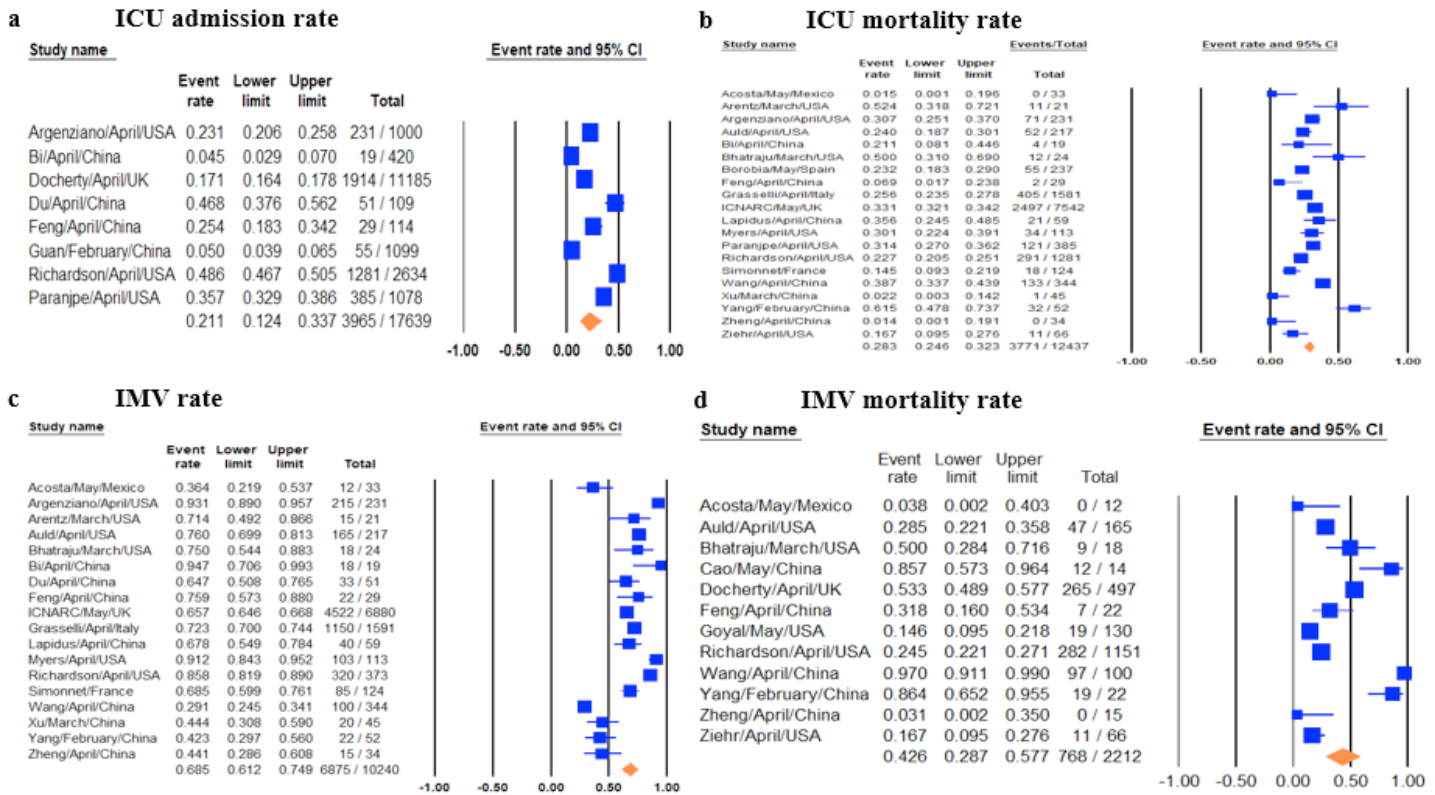
187

188 **Quantitative analysis**

189 **ICU admissions, duration and outcome.** Pooled ICU admission rate among 17,639 hospitalized

190 COVID-19 patients meta-analyzed from eight studies [9,12,14,18,25,27,29,34] was 21% (95% CI 0.12-

191 0.34) (Fig 2a) and pooled ICU mortality rate of 12,437 patients from 20 studies [8-19,21-25,31,33,35]
192 was 28.3% (95% CI 0.27-0.36) (Fig 2b), while the worst case scenario mortality is 60% (95% CI 0.49-
193 0.69) considering 4,697 patients with unknown outcomes. ICU length of stay (LoS) from five studies
194 [8,10,11,15,24] had a pooled mean duration of 7.78 (7.05-8.51) days. Substantial heterogeneity was
195 observed with ICU outcomes (p-value <0.1, $I^2 > 60%$) and not explained by subgroup analysis. Eggers'
196 test revealed no publication bias (Figure 3).
197
198 **IMV prevalence, duration and outcome.** Pooled IMV prevalence and mortality was respectively 69%
199 (95% CI 0.61-0.75) from 18 studies [8,9-12,15-19,21,22,24,27,31,33,35] with 10,240 cases (Figs 2c)
200 and 43% (95% CI 0.29-0.58) from 12 studies [10,11,14,18,22,23,26,28,31,33-35] with 2,212 cases
201 based on a best case scenario, with worst case scenario mortality of 74% (95% CI 0.54-0.87) (Fig. 2d).
202 IMV duration was pooled from four studies [9,15-17] with a mean duration of 10.12 days (95% CI
203 7.08-13.16). There was significant heterogeneity among IMV mortalities (p-value < 0.001, $I^2 > 90%$),
204 which was not explained by subgroup analysis, and Egger's test revealed no publication bias (Fig 4).
205



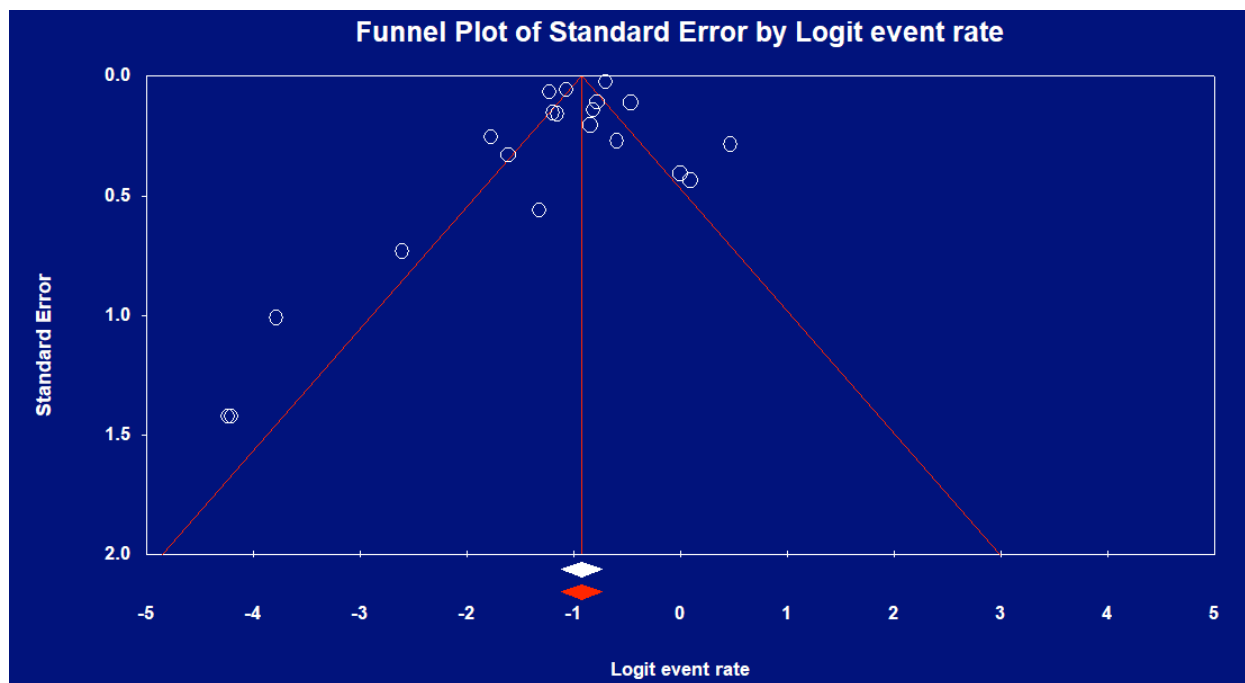
206
207

208 **Fig 2 Forest plots of relevant included studies showing pooled event rates of ICU and IMV**

209 **outcomes.** Forest plots of studies for 2a) ICU admission rates, 2b) ICU mortality rates, 2c) IMV rates,

210 2d) IMV mortality rates.

211
212

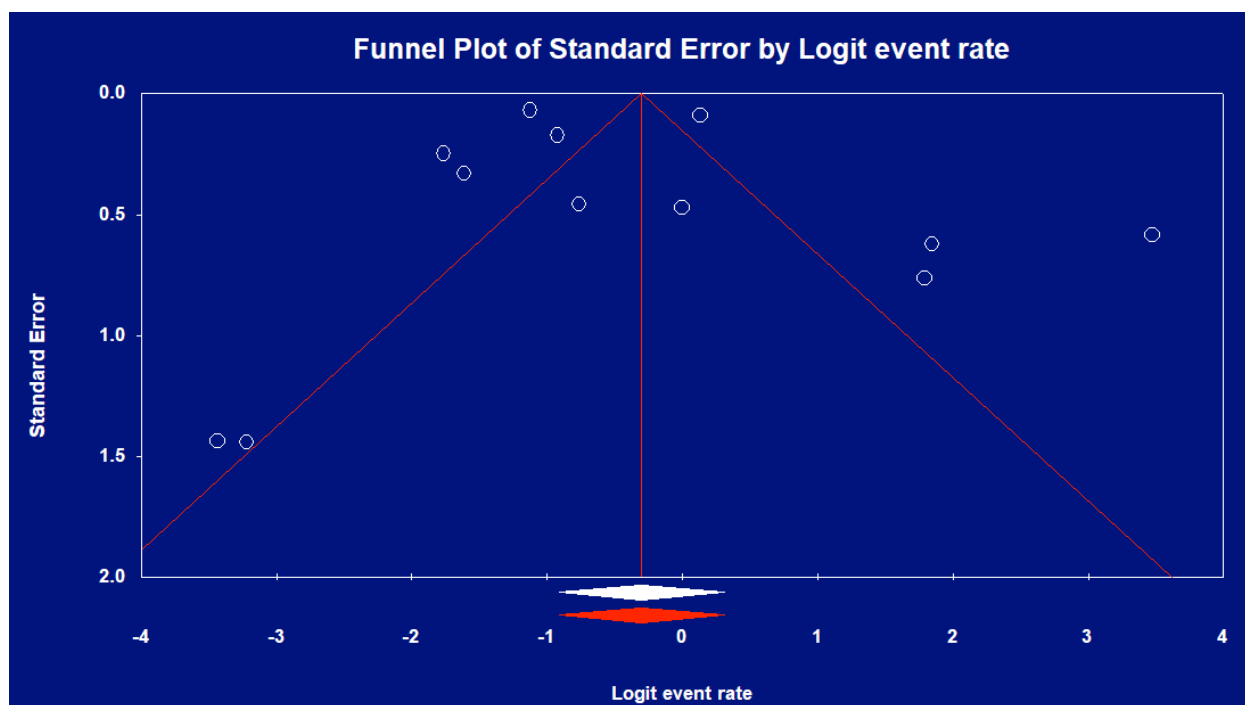


213

214 **Fig 3 Funnel plot of ICU mortality rate**

215

216



217

218 **Fig 4 Funnel plot of IMV mortality rate**

219

220

221 **Prevalence of comorbidities and clinical features.** The prevalence of comorbidities as well as
 222 presenting clinical features are listed in Table 2 with hypertension (HTN) 51%, obesity (BMI>30kg/m²)
 223 35% , diabetes (DM) 30% and fever 81%, cough 76%, dyspnea 75% the 3 most prevalent
 224 comorbidities and symptoms respectively. The pER's of select reported test findings were: bilateral
 225 infiltrates on chest radiography 83%, lymphopenia 78%, elevated alanine (ALT), aspartate
 226 aminotransferases (AST) 71%, 66.3% respectively, elevated troponin 22%. The pER for concurrent
 227 acute respiratory distress syndrome (ARDS) and acute kidney injury (AKI) were 84% and 32%
 228 respectively.

Clinical characteristics	Number of studies pooled	Heterogeneity		Prevalence (95%CI)
		P value	I ²	
Comorbidities				
Hypertension	15	<0.01	78.81	0.51 (0.46 - 0.56)
Obesity	5	<0.01	94.85	0.35 (0.23 - 0.49)
Diabetes mellitus	17	<0.01	89.74	0.29 (0.23 - 0.37)
Respiratory viral co-infection	3	<0.01	94.46	0.21 (0.004 - 0.94)
CHF	5	<0.01	88.36	0.16 (0.10 - 0.25)
Smoking	6	<0.01	90.14	0.15 (0.07 - 0.31)
CVD	3	0.4	00.00	0.13 (0.104 - 0.17)
Obstructive sleep apnea	3	<0.01	90.43	0.13 (0.03 - 43)
Asthma	5	0.4	00.00	0.103 (0.08 - 0.13)
Chronic Kidney disease	15	<0.01	96.97	0.09 (0.04 - 0.18)
COPD	12	<0.01	78.08	0.09 (0.06 - 0.13)
Malignancy	13	<0.01	93.33	0.07 (0.04 - 0.12)

Immuno-suppressive therapy	5	0.04	73.87	0.06 (0.03 - 0.12)
History of organ transplantation	2	0.4	00.00	0.05 (0.03 - 0.09)
Liver disease	11	<0.01	90.99	0.03 (0.01 - 0.07)
HIV	3	0.7	00.00	0.03 (0.01 - 0.05)
Complications				
ARDS	6	<0.01	96.13	0.84 (0.59 – 0.95)
AKI	6	<0.01	96.49	0.32 (0.13 – 0.58)
Symptoms and signs				
Fever	11	<0.01	92.95	0.81 (0.67 – 0.89)
Cough	12	<0.01	89.08	0.76 (0.56 – 0.77)
Shortness of breath	10	<0.01	82.21	0.75 (0.66 – 0.81)
Malaise	3	<0.01	89.39	0.53 (0.25 – 0.79)
Fatigue	5	<0.01	82.76	0.46 (0.32 – 0.61)
Myalgia	8	<0.01	83.26	0.23 (0.14 – 0.36)
Diarrhea	9	0.03	52.71	0.23 (0.17 – 0.29)
Sore throat	2	0.1	62.68	0.12 (0.05 – 0.27)
Nausea and vomiting	5	0.06	54.94	0.11 (0.07 – 0.19)
Headache	9	<0.01	79.45	0.11 (0.05 – 0.22)
Rhinorrhea	4	0.5	0	0.09 (0.06 – 0.13)
Investigational findings				
Bilateral infiltrates on chest radiography	6	<0.01	96.73	0.83 (0.53 - 0.96)
Lymphocytes, <1000/ μ L	6	0.09	47.49	0.78(0.72 - 0.84)
AST, >40/L	4	0.03	65.55	0.58 (0.35 – 0.75)
ALT, >40/L	3	<0.01	87.26	0.47 (0.14 – 0.83)

Troponin, >99th percentile	2	0.3	22.04	0.22 (0.11 – 0.39)
----------------------------	---	-----	-------	--------------------

229

230 **Table 2. Pooled prevalence of comorbidities and clinical features among ICU-admitted COVID-**
231 **19 patients.** Pooled prevalence of COVID-19 ICU admitted patients' clinical characteristics including
232 comorbidities, symptoms, signs, laboratory and radiographic findings, as well as complications of
233 ARDS and AKI. Abbreviations: ALT, alanine aminotransferase; AST, aspartate aminotransferase; AKI,
234 acute kidney injury; ARDS, acute respiratory distress syndrome; COPD, chronic obstructive pulmonary
235 disease; CVD, cardiovascular disease.

236

237 **Association of patient characteristics with ICU and IMV mortality.** We analyzed associated
238 COVID-19 ICU patient characteristics and initial laboratory findings for potential association with ICU
239 (Table 3 and Table 4) and IMV survival. Demographically, age>60 years (pOR 3.7, 95% CI 2.87-4.78)
240 and male gender (pOR 1.37, 95% CI 1.23-1.54) was associated with ICU mortality and male gender
241 (pOR 1.8, 95% CI 1.25 – 2.59) with IMV mortality. Of symptoms and signs, only dyspnea was
242 associated with ICU mortality (pOR 2.56, 95% CI 1.65 – 3.99). Of comorbidities, HTN was associated
243 with both ICU and IMV mortality (pOR 2.02, 95% CI 1.37 – 2.98; pOR 1.5, 95% CI 1.06 - 2.12,
244 respectively), whereas COPD (pOR 3.22, 95% CI 1.03 – 10.09), cardiovascular disease (CVD) (pOR
245 2.77, 95% CI 1.76 – 4.37), and DM (pOR 1.78, 95% CI 1.19 – 2.65) were associated with ICU
246 mortality. Of clinical findings, we found obesity, white blood cell count (WBC), ALT, AST, creatinine,
247 total bilirubin, D-dimer, prothrombin time (PT), C-reactive protein (CRP), creatine kinase, lactate,
248 lactate dehydrogenase (LDH); and reduced PaO₂/FiO₂, albumin or lymphocyte count to be correlated
249 with ICU mortality. Among complications, AKI (pOR 12.47, 95% CI 1.52 – 102.7) and ARDS (pOR
250 6.52, 95% CI 2.66 - 16.01) were associated with ICU mortality. Thrombocytopenia and

15

15

251 lymphocytopenia were correlated with ICU mortality; and there were no reports with laboratory
 252 findings to allow IMV outcome analysis. Finally, IMV significantly correlated ICU mortality (pOR
 253 16.46, 95% CI 4.37-61.96) based on 6 studies [10,11,18,20,31,33] with substantial heterogeneity (p-
 254 value <0.1, $I^2 > 60\%$) not explained by subgroup analysis. Eggers' testing revealed no publication bias.

Patient characteristics	OR (95%CI)	Heterogeneity		Number of studies	Number of non-surviving patients	Number of discharged patients	Non-surviving patients with the comorbidity	Discharged patients with the comorbidity
		P-value	I^2					
Symptoms and signs								
Dyspnea	2.56 (1.65-3.99)	0.2	39.61	2	165	231	121	120
Cough	1.38 (0.88-2.15)	0.8	0	2	165	231	121	152
Fever	0.84 (0.55-1.28)	0.9	0	3	283	495	167	260
Patient demographics								
Age > 60 years	3.7 (2.87-4.78)	0.1	49.08	5	3119	3258	2207	1375
Gender (male)	1.37 (1.23-1.54)	0.5	0	8	2839	3190	2072	2092
Comorbidities								
HTN	2.02 (1.37-2.98)	0.07	51.68	6	610	717	359	284
DM	1.78 (1.19-2.65)	0.1	41.9	5	281	396	72	64
CVD	2.77 (1.76-4.37)	0.1	44.87	6	333	525	65	40
COPD	3.22 (1.03-10.09)	0.06	55.03	5	301	505	34	20
Smoking	1.19 (0.48-2.92)	0.2	42.06	3	141	177	12	11
CVSD	3.84 (0.48-30.89)	0.3	16.95	2	39	28	8	1
Complications and IMV								
ARDS	6.52 (2.66-16.01)	0.5	0	3	172	49	161	28
AKI	12.47 (1.52-102.7)	0.005	81.15	3	172	239	94	9
IMV	16.46 (4.37-61.96)	<0.001	91.2	3	217	360	163	92

255

256 **Table 3. Meta-analysis of associations between COVID-19 ICU patient characteristics and ICU**
 257 **mortality.** COVID-19 ICU patient characteristics including analysed demographics, presenting

258 symptoms, comorbidities, complications and IMV and the corresponding number of non-surviving and
 259 discharged patients. Abbreviations: ARDS, adult respiratory distress syndrome; AKI, acute kidney
 260 injury; COPD, chronic obstructive pulmonary disease; CVD, cardiovascular disease; CVSD,
 261 cerebrovascular disease; DM, diabetes mellitus; HTN, hypertension, IMV, invasive mechanical
 262 ventilation.

Laboratory Finding	Number of studies	WMD (95% CI)	Meta-analysis P-value	Heterogeneity		Non-survived patients with data of the factor	Survived patients with data of the factor
				P-value	I ²		
Oxygenation							
Pao ₂ /FiO ₂ , mm/Hg	2	-33.763 (-46.936 - -20.591)	<0.001	0.8	0	84	149
Cell Blood Count							
Hemoglobin, g/dL	2	-0.380 (-1.348 - 0.587)	0.44	0.02	71.60	143	278
White blood cell count, x10 ⁹ /L	2	4.280 (3.675 - 4.885)	<0.001	0.5	0	244	469
Lymphocyte count, x10 ⁹ /L	3	-0.272 (-0.536 - -0.007)	0.044	<0.001	92.61	524	256
Platelet count/μl	3	-16.073 (-57.853 - 25.707)	0.45	<0.001	90.69	276	489
Coagulation index							
D-dimer, ug/mL	3	6.685 (1.328 - 12.042)	0.014	<0.001	95.49	242	467
Prothrombin time, secs	3	1.646 (1.362 - 1.930)	<0.001	0.2	33.326	228	328
Inflammatory marker							
CRP, mg/L	3	86.217 (47.912 - 124.523)	<0.001	<0.001	88.21	265	522

Biochemistry							
Albumin, g/dL	2	-0.512 (-0.590 - -0.434)	<0.001	0.7	0	240	447
ALT, U/L	2	3.846 (-2.474 - 10.165)	0.233	0.12	59.17	189	426
AST, U/L	2	22.996 (11.696 - 34.296)	<0.001	0.01	84.59	239	447
Creatinine, mg/dL	3	0.325 (-0.044 - 0.695)	0.084	<0.001	96.44	279	492
Creatine kinase, U/L	2	378.166 (-127.086 - 883.418)	0.142	<0.001	95.73	175	284
Lactate, mmol/L	2	0.289 (0.027 - 0.551)	0.03	0.2	42.45	66	69
LDH, U/L	2	235.354 (174.931 - 295.778)	<0.001	0.01	84.63	200	399
Total bilirubin, mmol/L	2	5.317 (4.200 - 6.434)	<0.001	0.6	0	165	231

263

264 **Table 4. Meta-analysis findings of the association between laboratory findings and COVID-19**

265 **ICU mortality.** Abbreviation: ALT, alanine aminotransferase; AST, aspartate aminotransferase ; CRP,
 266 C-reactive protein; LDH, lactate dehydrogenase; WMD, weighted mean difference.

267

268

269 **Regional differences in ICU and IMV outcomes.** Subgroup analysis revealed the following regional

270 ICU admissions: USA (35%), UK (17%) and China (14%); IMV rates: USA (85%), Italy (72%),

271 France (69%), UK (66%), China (56%), Mexico (36%); ICU mortality rates: UK (33%), USA (29%),

272 Italy (26%), China (24%), Spain (23%), France (15%), and Mexico (2%) and IMV mortality rates:

273 China (59%) followed by UK (53%), USA (24%) and Mexico (4%).

274 **DISCUSSION**

275 This is the most comprehensive systematic review and meta-analysis of COVID-19 ICU cases and

276 outcomes to date to our knowledge. Many reviews explored COVID-19 prognosis, with some reporting

277 generally on all [36] or hospitalized cases [37], or from a certain region [38], or focused on specific
278 aspects such as mortality [39] or outcomes [40], with only one systematic review specifically
279 addressing IMV mortality [41]. Here we attempt to provide a comprehensive assessment of ICU-
280 admitted COVID-19 patient characteristics, regional discrepancies, as well as overall ICU and IMV
281 specific outcomes and their associated factors.

282 Our pooled ICU best case mortality rate of 28.3% (95% CI 0.27-0.32) amongst COVID-19
283 patients is lower than earlier reports from Wuhan's 78% [20] and Seattle's 85% [8], but in line with the
284 more recent report of 31% from Atlanta [10], as well as 25.7% and 41.6% reported in reviews by Quah
285 et al. [39] and Armstrong et al. [40] respectively.

286
287 Our 43% (95% CI 0.29-0.58) pooled IMV mortality rate is also significantly lower than earlier
288 reports of 86–97% from Wuhan [20,31] or 71-75% from Seattle [8,11]. The more recent Atlanta study
289 revealed improved IMV mortality of 35.7% [10], which is more consistent with the 35% to 46%
290 mortality respectively reported for patients intubated with H1N1 influenza pneumonia [42] and other
291 causes of ARDS [43].

292
293 We found a pooled mean ICU LoS of 7.8 (7-8.5) days comparable to results from a review
294 reporting a median LoS of 8 (5-13) days for patients from China and 7 (4-11) days from outside China
295 [44]. As for IMV duration, we found a pooled mean duration of 10 days (95% CI 7-13), which is
296 shorter than earlier reports from Wuhan and Seattle of 10-17 days [41].

297
298 Taken together, our results are consistent with the recent finding by Armstrong et al of improved
299 COVID-19 ICU outcome over time, which was attributed to increased ICU experience, and evolving
300 admission criteria, treatments, and demographics [40]. We additionally hypothesize that improvements
301 in reported mortalities over time and regions may arise as healthcare systems become less
302 overwhelmed, and as more recent studies account for more complete patient outcomes. Significant
303 differences between reporting geographic regions could additionally be due to different ICU admission

304 criteria and treatment protocols, diversity of ethnic genetic factors as well as mutational evolution of
305 the virus itself [45], but more studies are necessary to explore these aspects.

306
307 Systematic reviews and analyses of select patient demographics, comorbidities, selective
308 laboratory findings and complications of the disease have been published [46,47], although there is no
309 systematic review addressing all these aspects in COVID-19 ICU or IMV to date. We found that
310 elderly COVID-19 patients with comorbidities have higher ICU and IMV fatalities; but this is not
311 unique to COVID-19 as many studies have noted that ICU patients generally consists of elderly
312 patients who have greater mortality [48].

313
314 Interestingly, despite higher absolute prevalences of certain comorbidities and presenting
315 features in COVID-19 ICU patients, the relative prevalence is the same as reported in less severe
316 symptomatic or hospitalized cases. For example, a review of mostly Chinese studies similarly found
317 hypertension to be the most common comorbidity in COVID-19 [49]; and another review identified
318 fever (88.7%), cough (57.6%) and dyspnea (45.6%) to be similarly most common manifestations [50].
319 Our results also corroborated findings from meta-analyses where DM [51], CVD [52], abnormal liver
320 function [53] have been found prevalent, associated and potentially prognostic in COVID-19.

321
322 For comorbidities, we found CVD, HTN and DM to be significantly associated with ICU
323 mortality, which is consistent with findings by a review that identified these same comorbidities to be
324 correlated with disease severity and ICU admissions [49]. Separately, Wang et al. also found HTM,
325 DM, and CVD to correlate with COVID-19 severity and mortality [54].

326
327 Of clinical findings: obesity, WBC, AST, D-dimer PT, CRP, lactate, LDH, and total bilirubin as
328 well as lower PaO₂/FiO₂, lymphocyte count and albumin to be significantly associated with ICU
329 outcome (Table 4), which is again consistent with previous reports on associations of obesity, liver
330 dysfunction, lymphocytopenia, coagulopathy, malnutrition, renal dysfunction, and cardiac injury with
331 COVID-19 severity or mortality.

332
333 While most clinical correlates we found above are consistent and noted by other reports to date,
334 three correlates with ICU mortality deserve discussion. One is AKI (pOR 12.47, 95% CI 1.52-102.7),
335 for which there are divergent reports on prevalence and significance. Thus, while some large COVID-
336 19 systematic reviews excluded AKI [27,37] and it is absent from some COVID-19 critical care
337 management guidelines [55,56], its incidence in hospitalized COVID-19 has been reported to be as low
338 as 0.5% [29] and some researchers even concluded that COVID-19 does not cause AKI [57]. However,
339 we found a pooled AKI prevalence of 32% and a New York report cited 46% of hospitalized and 68%
340 of ICU COVID-19 cases with AKI with 34% of those in ICU requiring replacement renal therapy
341 (RRT), and with an OR of 20.9 (95% CI 11.7-37.3) for AKI vs non-AKI associated ICU mortality [58].
342 Along with our analysis, this raises the concern that AKI may be seriously under appreciated in
343 critically ill COVID-19 patients.

344
345 ARDS is another significantly associated complication (pOR 6.52, 95% CI 2.66 - 16.01) we
346 found. Problematically, ARDS itself is a heterogeneous syndrome, with the six studies [8,9,22,31-33]
347 we analyzed variously applying the Berlin criteria [59], WHO guidance [60], or no criteria at all for its
348 diagnosis. Then there is a notion that COVID-19 ARDS may be a separate entity and that current
349 criteria are inadequate in guiding treatment [61]. Indeed, ARDS per the Berlin criteria defines a one
350 week onset limit whereas COVID-19 related ARDS has a median onset of 8-12 days [20].
351 Pathophysiologically, there are also differences between COVID or non-COVID ARDS and Gattinoni
352 et al. have highlighted the non-uniformity of ARDS in COVID-19 based on elastance,
353 ventilation/perfusion ratio, lung weight and recruitability [62]. Thus, further efforts are urgently
354 needed in clarifying the pathophysiology and developing new stratifications of severity for COVID-19
355 specific ARDS to guide optimal ventilatory support for ICU COVID-19 patients.

356
357 Finally, the issue of defining ARDS in COVID-19 leads to applicability of IMV as its treatment.

358 Early studies have reported ICU mortality rates as high as 86-97% for IMV in COVID-19 patients
359 [18,20,31], but no study to date specifically reported on the relative odds for IMV v. non-IMV in terms
360 of outcome. Our finding that IMV itself is significantly associated with ICU mortality (pOR 16.46,
361 95% CI 4.37-61.96) coupled with subgroup analyses showing regions with higher ICU mortalities
362 coincide with regions with higher IMV rates (USA, UK, Italy) are notable because it questions the
363 benefits of IMV as well as the wisdom of public policies emphasizing ventilator availability in coping
364 with the pandemic. The concern for potentially harmful overuse of IMV has been raised by past
365 research, since IMV itself carries risks that may adversely affect survival [63]. Additionally,
366 inappropriate timing of intubation too early or too late, inadequately trained or overwhelmed staff, as
367 well as improper ventilation settings and IMV associated pneumonia can all potentially enhance
368 mortality; and this should all be investigated more fully in COVID-19 cases.

369
370 From prior studies on ARDS, we know that other ventilation strategies such as non-invasive
371 ventilation (NIV) may improve mortality over IMV [64], and there are suggestions that non-rebreathing
372 masks and prone positioning may improve outcome in hypoxemic COVID-19 patients [65]. The
373 comparison of different ventilation strategies is beyond the scope of our review and there is yet no
374 published study comparing ventilation strategies in COVID-19. However, our data supports a more
375 conservative approach to initiating IMV, as well as the need for well designed trials to clarify the role
376 of various ventilation strategies in COVID-19 associated ARDS.

377 Finally, our results highlight significant regional discrepancies in COVID-19 ICU and IMV
378 rates and outcomes. As the pandemic evolves, regional differences of local health systems and their
379 resources as well as genetic differences amongst populations and possible viral evolution over time can
380 all account for such differences and deserves study. Regional differences also imply the need for
381 flexible region-specific treatment protocols especially in resource-limited settings [65] instead of the

382 aim to set uniform international protocols for treatment.

383

384 **Limitations**

385 There are multiple limitations with our study. We have issues with incompleteness of data where not all
386 outcomes are accounted for in many studies, as well as underlying heterogeneity of data with small
387 number of studies and studies with small numbers of patients. Moreover, all our retrieved reports were
388 retrospective cohorts, which limits our ability to infer causality; and some of these were not peer-
389 reviewed. Furthermore, we could not adjust for confounders of potentially related variables in an
390 analysis of survival vs. non-survival based on these studies. Finally, regional differences in health
391 systems and their different treatment protocols may also confound results.

392

393 **Conclusions**

394 This is the largest and most comprehensive review and meta-analysis of ICU and IMV outcomes in
395 COVID-19 ICU patients. Our findings parallel earlier reports on prevalences of associated
396 comorbidities and clinical findings in COVID-19 patients implying largely the same set of factors is
397 associated with severity and outcome regardless of stage of disease. However, we highlight the
398 significant association of AKI and ARDS associated IMV in ICU outcomes, which deserve further
399 research to refine diagnostic criteria and enable the development of optimally tailored treatment
400 strategies, as well as better planning and allocation of critical care resources. Finally significant
401 regional discrepancies in outcomes implies a need for further studies to allow a broader perspective of
402 factors associated with ICU and IMV risks and outcomes under different healthcare systems in different
403 populations.

404

405 REFERENCES

- 406 1. Moher D, Liberati A, Tetzlaff J, Altman DG, PRISMA Group (2009) Preferred reporting items
407 for systematic reviews and meta-analyses: the PRISMA statement. *BMJ* 339:b2535.
408 [https://doi:10.1136/bmj.b2535](https://doi.org/10.1136/bmj.b2535)
- 409 2. National Heart, Lung and Blood Institute (NHLBI). Study quality assessment tools.
410 <https://www.nhlbi.nih.gov/health-topics/study-quality-assessment-tools>.
- 411 3. DerSimonian R, Laird N (1986) Meta-analysis in clinical trials. *Control Clin Trial* 7:177-188.
412 [https://doi:10.1016/0197-2456\(86\)90046-2](https://doi.org/10.1016/0197-2456(86)90046-2)
- 413 4. Higgins JPT, Thompson SG, Deeks JJ, Altman DG (2003) Measuring inconsistency in meta-
414 analyses. *Br Med J*. [https://doi:10.1136/bmj.327.7414.557](https://doi.org/10.1136/bmj.327.7414.557)
- 415 5. Begg CB, Mazumdar M (1994) Operating characteristics of a rank correlation test for
416 publication bias. *Biometrics* 50:1088. [https://doi:10.2307/2533446](https://doi.org/10.2307/2533446)
- 417 6. Sterne JAC, Egger M (2001) Funnel plots for detecting bias in meta-analysis. *J Clin Epidemiol*
418 54:1046-1055. [https://doi:10.1016/S0895-4356\(01\)00377-8](https://doi.org/10.1016/S0895-4356(01)00377-8)
- 419 7. Wan X, Wang W, Liu J, Tong T (2014) Estimating the sample mean and standard deviation from
420 the sample size, median, range and/or interquartile range. *BMC Med Res Methodol*.
421 [https://doi:10.1186/1471-2288-14-135](https://doi.org/10.1186/1471-2288-14-135)
- 422 8. Arentz M, Yim E, Klaff L, et al (2020) Characteristics and outcomes of 21 critically ill patients
423 with COVID-19 in Washington state. *JAMA* 363:1612. [https://doi:10.1001/jama.2020.4326](https://doi.org/10.1001/jama.2020.4326)
- 424 9. Argenziano MG, Bruce SL, Slater CL, et al (2020) Characterization and clinical course of 1000
425 patients with coronavirus disease 2019 in New York: retrospective case series. *BMJ*.
426 [https://doi:10.1136/bmj.m1996](https://doi.org/10.1136/bmj.m1996)
- 427 10. Auld SC, Caridi-Scheible M, Blum JM, et al (2020) ICU and ventilator mortality among
428 critically ill adults with coronavirus disease 2019. *Crit Care Med*.
429 [https://doi:10.1097/CCM.0000000000004457](https://doi.org/10.1097/CCM.0000000000004457)
- 430 11. Bhatraju PK, Ghassemieh BJ, Nichols M, et al (2020) Covid-19 in critically ill patients in the
431 Seattle region — Case series. *N Engl J Med* 382:2012-2022.
432 [https://doi:10.1056/NEJMoa2004500](https://doi.org/10.1056/NEJMoa2004500)
- 433 12. Bi Q, Hong C, Meng J, et al (2020) Characterization of clinical progression of COVID-19
434 patients in Shenzhen, China. *medRxiv*. [https://doi:10.1101/2020.04.22.20076190](https://doi.org/10.1101/2020.04.22.20076190)
- 435 13. Borobia A, Carcas A, Arnalich F, et al (2020) A cohort of patients with COVID-19 in a major
436 teaching hospital in Europe. *J Clin Med* 9:1733. [https://doi:10.3390/jcm9061733](https://doi.org/10.3390/jcm9061733)
- 437 14. Feng X, Li P, Ma L, et al (2020) Clinical characteristics and short-term outcomes of severe

- 438 patients with COVID-19 in Wuhan, China. medRxiv. <https://doi:10.1101/2020.04.24.20078063>
- 439 15. Grasselli G, Zangrillo A, Zanella A, et al (2020) Baseline characteristics and outcomes of 1591
440 patients infected with SARS-CoV-2 admitted to ICUs of the Lombardy region, Italy. JAMA
441 323:1574. <https://doi:10.1001/jama.2020.5394>
- 442 16. Lapidus N, Zhou X, Carrat F, Riou B, Zhao Y, Hejblum G (2020) Biased and unbiased
443 estimation of the average lengths of stay in intensive care units in the COVID-19 pandemic.
444 medRxiv. <https://doi:10.1101/2020.04.21.20073916>
- 445 17. Myers LC, Parodi SM, Escobar GJ, Liu VX (2020) Characteristics of hospitalized adults with
446 COVID-19 in an integrated health care system in California. JAMA 323 :2195.
447 <https://doi:10.1001/jama.2020.7202>
- 448 18. Richardson S, Hirsch JS, Narasimhan M, et al (2020) Presenting characteristics, comorbidities,
449 and outcomes among 5700 patients hospitalized with COVID-19 in the New York City area.
450 JAMA 323:2052. <https://doi:10.1001/jama.2020.6775>
- 451 19. Simonnet A, Chetboun M, Poissy J, et al (2020). High prevalence of obesity in severe acute
452 respiratory syndrome coronavirus-2 (SARS-CoV-2) requiring invasive mechanical ventilation.
453 Obesity 28 :1195-1199. <https://doi:10.1002/oby.22831>
- 454 20. Zhou F, Yu T, Du R, et al (2020) Clinical course and risk factors for mortality of adult inpatients
455 with COVID-19 in Wuhan, China: a retrospective cohort study. Lancet. 395:1054-1062.
456 [https://doi:10.1016/S0140-6736\(20\)30566-3](https://doi:10.1016/S0140-6736(20)30566-3)
- 457 21. Xu Y, Xu Z, Liu X, et al (2020). Clinical findings in critical ill patients infected with SARS-Cov-
458 2 in Guangdong province, China: A multi-center, retrospective, observational study. medRxiv.
459 doi:10.1101/2020.03.03.20030668
- 460 22. Zheng Y, Sun L, Xu M, et al (2020) Clinical characteristics of 34 COVID-19 patients admitted to
461 intensive care unit in Hangzhou, China. J Zhejiang Univ B 21:378-387.
462 <https://doi:10.1631/jzus.B2000174>
- 463 23. Ziehr DR, Alladina J, Petri CR, et al (2020) Respiratory pathophysiology of mechanically
464 ventilated patients with COVID-19: A cohort study. Am J Respir Crit Care Med 201:1560-1564.
465 <https://doi:10.1164/rccm.202004-1163LE>
- 466 24. Intensive Care National Audit and Research Centre. ICNARC report on COVID-19 in critical
467 care. 30th April 2020. <https://icnarc.org/Our-Audit/Audits/Cmp/Reports>. Accessed 1 May 2020
- 468 25. Paranjpe I, Russak A, Freitas JK, et al (2020) Clinical characteristics of hospitalized covid-19
469 patients in New York City. medRxiv. <https://doi:10.1101/2020.04.19.20062117>
- 470 26. Goyal P, Choi JJ, Pinheiro LC, et al (2020) Clinical characteristics of covid-19 in New York
471 City. N Engl J Med 382:2372-2374. <https://doi:10.1056/NEJMc2010419>

- 472 27. Du R-H, Liu L-M, Yin W, et al (2020) Hospitalization and Critical Care of 109 Decedents with
473 COVID-19 pneumonia in Wuhan, China. *Ann Am Thorac Soc* 17:839-846.
474 [https://doi:10.1513/AnnalsATS.202003-225OC](https://doi.org/10.1513/AnnalsATS.202003-225OC)
- 475 28. Cao J, Tu W-J, Cheng W, et al (2020). Clinical features and short-term outcomes of 102 patients
476 with coronavirus disease 2019 in Wuhan, China. *Clin Infect Dis*. [https://doi:10.1093/cid/ciaa243](https://doi.org/10.1093/cid/ciaa243)
- 477 29. Guan W, Ni Z, Hu Y, et al (2020) Clinical characteristics of coronavirus disease 2019 in China. *N*
478 *Engl J Med* 382:1708-1720. [https://doi:10.1056/NEJMoa2002032](https://doi.org/10.1056/NEJMoa2002032)
- 479 30. Lei S, Jiang F, Su W, et al (2020) Clinical characteristics and outcomes of patients undergoing
480 surgeries during the incubation period of COVID-19 infection. *EClinicalMedicine* 21:100331.
481 [https://doi:10.1016/j.eclinm.2020.100331](https://doi.org/10.1016/j.eclinm.2020.100331)
- 482 31. Yang X, Yu Y, Xu J, et al (2020) Clinical course and outcomes of critically ill patients with
483 SARS-CoV-2 pneumonia in Wuhan, China: a single-centered, retrospective, observational study.
484 *Lancet Respir Med* 8:475-481. [https://doi:10.1016/S2213-2600\(20\)30079-5](https://doi.org/10.1016/S2213-2600(20)30079-5)
- 485 32. Huang C, Wang Y, Li X, et al (2020) Clinical features of patients infected with 2019 novel
486 coronavirus in Wuhan, China. *Lancet*. 395:497-506. [https://doi:10.1016/S0140-6736\(20\)30183-5](https://doi.org/10.1016/S0140-6736(20)30183-5)
- 487 33. Wang Y, Lu X, Li Y, et al (2020) Clinical course and outcomes of 344 intensive care patients
488 with COVID-19. *Am J Respir Crit Care Med*. 201:1430-1434. [https://doi:10.1164/rccm.202003-0736LE](https://doi.org/10.1164/rccm.202003-0736LE)
- 490 34. Docherty AB, Harrison EM, Green CA, et al (2020). Features of 16,749 hospitalised UK patients
491 with COVID-19 using the ISARIC WHO Clinical Characterisation Protocol. *medRxiv*.
492 [https://doi:10.1101/2020.04.23.20076042](https://doi.org/10.1101/2020.04.23.20076042)
- 493 35. Valente-Acosta B, Hoyo-Ulloa I, Espinosa-Aguilar L, et al (2020) *COVID-19* Severe pneumonia
494 in Mexico City - First experience in a Mexican hospital. *medRxiv*.
495 [https://doi:10.1101/2020.04.26.2008079](https://doi.org/10.1101/2020.04.26.2008079)
- 496 36. Zhao X, Zhang B, Li P, et al (2020) Incidence, clinical characteristics and prognostic factor of
497 patients with COVID-19: a systematic review and meta-analysis. *medRxiv*.
498 [https://doi:10.1101/2020.03.17.20037572](https://doi.org/10.1101/2020.03.17.20037572)
- 499 37. Abate, SM, Checkol YA, Manfredafro B BB (3030) Prevalence and risk factors of mortality
500 among hospitalized patients with COVID-19: A systematic review and meta-analysis. *Bull*
501 *World Health Org*. <https://dx.doi.org/10.2471/BLT.20.260737>
- 502 38. Jain V, Yuan JM (2020) Predictive symptoms and comorbidities for severe COVID-19 and
503 intensive care unit admission: a systematic review and meta-analysis. *Int J Public Health* 65:533-
504 546. [https://doi:10.1007/s00038-020-01390-7](https://doi.org/10.1007/s00038-020-01390-7)
- 505 39. Quah P, Li A, Phua J (2020). Mortality rates of patients with COVID-19 in the intensive care

- 506 unit: a systematic review of the emerging literature. *Crit Care*. 24:285.
507 [https://doi:10.1186/s13054-020-03006-1](https://doi.org/10.1186/s13054-020-03006-1)
- 508 40. Armstrong RA, Kane AD, Cook TM (2020) Outcomes from intensive care in patients with
509 COVID-19: a systematic review and meta-analysis of observational studies. *Anaesthesia*.
510 [https://doi:10.1111/anae.15201](https://doi.org/10.1111/anae.15201)
- 511 41. Almeshari MA, Alobaidi NY, Al Asmri M, et al (2020) Mechanical ventilation utilization in
512 COVID-19: A systematic review and meta-analysis. *medRxiv*.
513 [https://doi:10.1101/2020.06.04.20122069](https://doi.org/10.1101/2020.06.04.20122069)
- 514 42. Domínguez-Cherit G (2009) Critically ill patients with 2009 influenza A(H1N1) in Mexico.
515 *JAMA*302:1880. [https://doi:10.1001/jama.2009.1536](https://doi.org/10.1001/jama.2009.1536)
- 516 43. Bellani G, Laffey JG, Pham T, et al (2016) Epidemiology, patterns of care, and mortality for
517 patients with acute respiratory distress syndrome in intensive care units in 50 Countries. *JAMA*
518 315:788. [https://doi:10.1001/jama.2016.0291](https://doi.org/10.1001/jama.2016.0291)
- 519 44. Rees EM, Nightingale ES, Jafari Y, et al (2020) COVID-19 length of hospital stay: a systematic
520 review and data synthesis. *medRxiv*. [https://doi:10.1101/2020.04.30.20084780](https://doi.org/10.1101/2020.04.30.20084780)
- 521 45. Phan T (2020) Genetic diversity and evolution of SARS-CoV-2. *Infect Genet Evol* 81:104260.
522 [https://doi:10.1016/j.meegid.2020.104260](https://doi.org/10.1016/j.meegid.2020.104260)
- 523 46. Tian W, Jiang W, Yao J, et al (2020) Predictors of mortality in hospitalized COVID-19 patients:
524 A systematic review and meta-analysis. *J Med Virol*. [https://doi:10.1002/jmv.26050](https://doi.org/10.1002/jmv.26050)
- 525 47. Cao Y, Liu X, Xiong L, Cai K (2020) Imaging and clinical features of patients with 2019 novel
526 coronavirus SARS-CoV-2: A systematic review and meta-analysis. *J Med Virol*.
527 [https://doi:10.1002/jmv.25822](https://doi.org/10.1002/jmv.25822)
- 528 48. Santa Cruz R, Villarejo F, Figueroa A, Cortés-Jofré M, Gagliardi J, Navarrete M (2019)
529 Mortality in critically ill elderly individuals receiving mechanical ventilation. *Respir Care*
530 64:473-483. [https://doi:10.4187/respcare.06586](https://doi.org/10.4187/respcare.06586)
- 531 49. Liu H, Chen S, Liu M, Nie H, Lu H (2020) Comorbid chronic diseases are strongly correlated
532 with disease severity among COVID-19 patients: A systematic review and meta-analysis. *Aging*
533 *Dis* 11:668. [https://doi:10.14336/AD.2020.0502](https://doi.org/10.14336/AD.2020.0502)
- 534 50. Rodriguez-Morales AJ, Cardona-Ospina JA, Gutiérrez-Ocampo E, et al (2020) Clinical,
535 laboratory and imaging features of COVID-19: A systematic review and meta-analysis. *Travel*
536 *Med Infect Dis* 34:101623. [https://doi:10.1016/j.tmaid.2020.101623](https://doi.org/10.1016/j.tmaid.2020.101623)
- 537 51. Huang I, Lim MA, Pranata R (2020) Diabetes mellitus is associated with increased mortality and
538 severity of disease in COVID-19 pneumonia – A systematic review, meta-analysis, and meta-
539 regression. *Diabetes Metab Syndr Clin Res Rev* 14:395-403.

- 540 <https://doi:10.1016/j.dsx.2020.04.018>
- 541 52. Shamshirian A, Heydari K, Alizadeh-Navaei R, Moosazadeh M, Abrotan S, Hessami A (2020)
542 Cardiovascular diseases and COVID-19 mortality and intensive care unit admission: A
543 systematic review and meta-analysis. *medRxiv*. <https://doi:10.1101/2020.04.12.20062869>
- 544 53. Youssef M, Hussein M, Attia AS, et al (2020) COVID-19 and liver dysfunction: a systematic
545 review and meta-analysis of retrospective studies. *J Med Virol*. <https://doi:10.1002/jmv.26055>
- 546 54. Wang X, Fang X, Cai Z, et al (2020) Comorbid chronic diseases and acute organ injuries are
547 strongly correlated with disease severity and mortality among COVID-19 patients: A systemic
548 review and meta-Analysis. *Research* 2020:1-17. <https://doi:10.34133/2020/2402961>
- 549 55. Phua J, Weng L, Ling L, et al (2020) Intensive care management of coronavirus disease 2019
550 (COVID-19): challenges and recommendations. *Lancet Respir Med* 8:506-517.
551 [https://doi:10.1016/S2213-2600\(20\)30161-2](https://doi:10.1016/S2213-2600(20)30161-2)
- 552 56. Alhazzani W, Møller MH, Arabi YM, et al (2020) Surviving sepsis campaign: guidelines on the
553 management of critically ill adults with coronavirus disease 2019 (COVID-19). *Intensive Care*
554 *Med* 46:854-887. <https://doi:10.1007/s00134-020-06022-5>
- 555 57. Wang L, Li X, Chen H, et al (2020) Coronavirus disease 19 infection does not result in acute
556 kidney injury: An analysis of 116 hospitalized patients from Wuhan, China. *Am J Nephrol*
557 51:343-348. <https://doi:10.1159/000507471>
- 558 58. Chan L, Chaudhary K, Saha A, et al (2020) Acute kidney injury in hospitalized patients with
559 COVID-19. *medRxiv*. <https://doi:10.1101/2020.05.04.20090944>
- 560 59. Ferguson ND, Fan E, Camporota L, et al (2012) The Berlin definition of ARDS: an expanded
561 rationale, justification, and supplementary material. *Intensive Care Med* 38:1573-1582.
562 <https://doi:10.1007/s00134-012-2682-1>
- 563 60. World Health Organization (2020) Clinical management of severe acute respiratory infection
564 when novel coronavirus (2019-nCoV) infection is suspected: interim guidance, 28 January 2020.
565 <https://apps.who.int/iris/handle/10665/330893>
- 566 61. Tsolaki V, Zakyntinos GE, Makris D (2020) The ARBSnet protocol may be detrimental in
567 COVID-19. *Crit Care* 24:351. <https://doi:10.1186/s13054-020-03081-4>
- 568 62. Gattinoni L, Chiumello D, Caironi P, et al (2020). COVID-19 pneumonia: different respiratory
569 treatments for different phenotypes? *Intensive Care Med* 46:1099-1102.
570 <https://doi:10.1007/s00134-020-06033-2>
- 571 63. Slutsky AS, Ranieri VM (2013) Ventilator-induced lung injury. *N Engl J Med*. 369:2126-2136.
572 <https://doi:10.1056/NEJMra1208707>

- 573 64. Lindenauer PK, Stefan MS, Shieh M-S, Pekow PS, Rothberg MB, Hill NS (2014). Outcomes
574 associated with invasive and noninvasive ventilation among patients hospitalized with
575 exacerbations of chronic obstructive pulmonary disease. JAMA Intern Med 174:1982.
576 [https://doi:10.1001/jamainternmed.2014.5430](https://doi.org/10.1001/jamainternmed.2014.5430)
- 577 65. Dondorp AM, Hayat M, Aryal D, Beane A, Schultz MJ (2020). Respiratory support in COVID-
578 19 patients, with a focus on resource-limited settings. Am J Trop Med Hyg 102:1191-1197.
579 [https://doi:10.4269/ajtmh.20-0283](https://doi.org/10.4269/ajtmh.20-0283)

580
581
582
583
584
585
586
587
588
589
590
591
592
593
594

595 **Supporting Information**

596

597 **S1 Table. Prisma Checklist**

598 **S1 File. PROSPERO Registration**