

IL-6 and IL-10 as predictors of disease severity in COVID-19 patients: Results from Meta-analysis and Regression

Sujan K Dhar¹, Vishnupriyan K², Sharat Damodar³, Shashi Gujar^{4*} and Manjula Das^{2*}

¹Beyond Antibody, InCite Lab, MSMF, 8th Floor MSMC, Bommasandra, Bangalore, India

² Tumor Immunology, MSMF, 8th Floor MSMC, Bommasandra, Bangalore, India

³ Department of Hematology, 7th Floor MSMC, Bommasandra, Bangalore, India

⁴ Room, 11J, 5850 College Street, Sir Charles Tupper Medical Building, Dalhousie University, Halifax, Nova Scotia, Canada B3H 1X5

Sujan K Dhar: sujan@beyondantibody.com

Vishnupriyan K: vishnupriyantgp@gmail.com

Sharat Damodar: drsharat.damodar@gmail.com

Shashi Gujar: shashi.gujar@dal.ca

Manjula Das: manjula.msmf@gmail.com

*Corresponding authors:

Dr Manjula Das (manjula.msmf@gmail.com)

Tumour Immunology, Mazumdar Shaw Medical Foundation

8th Floor MSMC, Bommasandra, Bangalore, India

Email: manjula.msmf@gmail.com

Dr Shashi Gujar (shashi.gujar@dal.ca)

Room, 11J, 5850 College Street, Sir Charles Tupper Medical Building, Dalhousie University, Halifax, Nova Scotia, Canada B3H 1X5

Email: shashi.gujar@dal.ca

Keywords: COVID-19, Meta-Analysis, Cytokines, Logistic Models

NOTE: This preprint reports new research that has not been certified by peer review and should not be used to guide clinical practice.

Abstract

Objectives: SARS-CoV-2, an infectious agent behind the ongoing COVID-19 pandemic, induces high levels of cytokines in patients contributing to the disease patho-physiology. Nonetheless, exact association and contribution of particular cytokines towards COVID-19 pathology remains poorly understood. This study performed a comprehensive meta-analysis to establish association between induced cytokines and COVID-19 disease severity to help in prognosis and clinical management.

Methods: Scientific literature was searched to identify 18 clinical studies. Standardized mean difference (SMD) for cytokines IL-2, IL-4, IL-6, IL-10, TNF- α and IFN- γ between severe and non-severe COVID-19 patient groups were summarized using random effects model. A classifier was built using logistic regression model with cytokines having significant SMD as covariates.

Results: Out of the 6 cytokines, IL-6 and IL-10 showed statistically significant SMD across the studies synthesized. Classifier with mean values of both IL-6 and IL-10 as covariates performed well with accuracy of $\sim 92\%$ that was significantly higher than accuracy reported in literature with IL-6 and IL-10 as individual covariates.

Conclusions: Simple panel proposed by us with only two cytokine markers can be used as predictors for fast diagnosis of patients with higher risk of COVID-19 disease deterioration and thus can be managed well for a favourable prognosis.

Introduction

COVID-19 pandemic caused by SARS-CoV-2 has emerged as a major threat to mankind affecting 18+ million people resulting in over 700,000 deaths¹ worldwide. Exuberant inflammation manifested as hypercytokinemia with elevated levels of cytokines such as IL-2, IL-6, IL-7, IL-10, IFN- γ , and TNF- α is a hallmark of the SARS-CoV-2 infection often leading to critical conditions like ARDS (acute respiratory distress syndrome) and multi-organ failure².

Innate immune response is the first step of defence mechanism against viral infection. Pattern recognition receptors in host dendritic cells recognize viral genomic DNA or RNA present in infected cells and initiate a battery of immune and inflammatory responses including production of cytokines and chemokines³ which in turn recruits immune cells such as macrophages, neutrophils and T-cells to the site of infection to further combat the virus. Nature of cytokines determine the type of immune response as individual cytokines play specific roles based on their source and target cells⁴. Pro-inflammatory cytokines including type I/II interferons, IL-1, IL-6 and TNF- α play major role in initial response, whereas anti-inflammatory molecules such as IL-10 are produced during sustained infection to keep a check on inflammation and maintain immune homeostasis⁵.

Sustained elevated levels of the cytokines due to viral infections often lead to hypercytokinemia, commonly referred as “cytokine storm” (CS) in which the homeostasis of immune response is disturbed leading to acute inflammation at systemic level. Acute lung damage is a common clinical manifestation of CS often leading to fatality⁶. Such heightened immune response is a signature of coronavirus family as reported earlier for MERS-CoV and SARS-CoV infections^{7,8}. In COVID-19, elevated levels of both pro-inflammatory (IL-1, IL-6, TNF- α) and anti-inflammatory (IL-10, IL-1RA) cytokines are observed^{9,10}. IL-6 is a major actor in CS, with increased serum levels leading to induction of acute phase response proteins including C-reactive protein (CRP) and serum amyloid A (SAA). Recently published meta-analysis studies on the levels of cytokines in COVID-19 patients have focussed mostly on IL-6 due to potential repurposing of tocilizumab to suppress the inflammatory condition. Coomes et al inferred IL-6 ratio of means in severe versus mild condition as 3.63 (95% CI: 0.65 – 20.37) over three studies¹¹, whereas other meta-analyses reported difference of IL-6 level in terms of standardized mean difference (SMD) as 1.54 (95% CI: 0.71 – 2.38)¹² and mean difference as 38.6 pg/mL (95% CI: 24.3

– 52.9)¹³. All these meta-analysis summary results were associated with high level of heterogeneity ($I^2 \sim 98 - 100\%$). In a limited size meta-analysis over three studies, Rangel et al found the ratio IL-6/IFN- γ significantly elevated in severe patients¹⁴ with SMD 0.74 (95% CI: 0.13 – 1.38) with substantial heterogeneity ($I^2 = 79\%$). IL-10, on the other hand is an anti-inflammatory cytokine which inhibits its pro-inflammatory counterparts. Multiple clinical studies have reported elevated levels of IL-10 in COVID-19 patients^{2,15,16}. Levels of IL-6, IL-10 and TNF- α were also found to be indicators of T-cell exhaustion in COVID-19 patients¹⁷.

Though the levels of cytokines are increased in severe COVID-19 patients, it's implication in a therapeutic perspective remains unclear. Corticosteroids that can potentially suppress cytokines by inhibiting NF- κ B transcription factor have been used on COVID-19 patients. However, a meta-analysis across studies involving infection of SARS-CoV, SARS-CoV-2 and MERS-CoV showed increased mortality risk ratio (RR 2.11, 95% CI: 1.13 – 3.94) for patients treated with corticosteroids¹⁸. There are also a couple of case reports on anti-TNF- α agents etanercept¹⁹ and infliximab²⁰ therapy used successfully for COVID-19 patients with pre-existing auto-immune conditions. However, results of wider application of such therapy is still awaited. On the other hand, there have been several studies targeting IL-6 levels using siltuximab, an IL-6 inhibitor or tocilizumab, an IL-6 receptor inhibitor in severe COVID-19 patients. A review by Jamilloux et al²¹ on few such studies did not reveal any conclusive benefits due to lack of appropriate control groups in design or inadequate statistical significance. Further, the timing for anti-IL-6 agent administration remains critical since an early administration may negatively affect the innate response, while the late administration may not yield desired benefits. Some of the ongoing clinical results using anti-IL-6 therapy will shed more light in near future.

Nonetheless, the use of the cytokines as a prognostic marker for severity of COVID-19 symptoms looked promising. One of the earliest clinical studies showed significant difference in levels of IL-6 and IL-10 along with CD4⁺ and CD8⁺ T-cell population between mild and severe groups²² but did not carry out further analysis on prognostic value of these markers. Results of the meta-analysis studies described before¹¹⁻¹⁴ concluded elevated levels of cytokines in severe COVID-19 patients but did not proceed to establish significance of the markers as a classifier of patient groups. A more recent study²³ presented univariate classifiers for severe and non-severe patient groups using levels of

IL-6, IL-10 and IFN- γ individually as covariates and failed to capture the possible interdependence of the markers which perhaps was the cause for lesser-than-optimal classifier performance. In this study, we present a comprehensive meta-analysis to establish difference in levels of commonly used cytokine markers between severe and non-severe patient groups and build a classifier using markers that present significant differences. This generalized and comprehensive approach can lead to a prognostic system to aid clinical management of COVID-19.

Methods

Literature Search

We performed the meta-analysis following PRISMA guidelines. Literature search was performed in the LitCovid portal of Pubmed, in Google Scholar as well as in preprint archives such as medRxiv, bioRxiv and SSRN library for articles in English published in year 2020 with COVID-19-specific terms along with terms such as “cytokine level” and combinations of common cytokine names and gene symbols. Search strategy was reviewed by all authors and it was decided to retain non-peer reviewed articles in selection in view of the present emerging situation. Identified articles were screened and shortlisted to clinical studies that contained data for multiple cytokines including IL-6 for the ‘severe’ and ‘non-severe’ COVID-19 patient groups. Exclusion criteria for shortlisting included review articles, opinions and commentaries and studies that include other pathological conditions or complications associated with COVID-19.

Meta-analysis and Meta-Regression

Selected articles were reviewed independently by two authors (VK and SKD). Data was extracted from articles using standardized forms and was cross-validated. Cytokine levels reported as median (IQR) was converted to mean and standard deviation using standard methods²⁴. To assess the effect of each marker, we used the standardized mean difference (SMD) of measured cytokine level (in pg/mL) between severe and non-severe groups including Hedges’ correction for positive bias. All calculations were carried out using the metafor library²⁵ on R statistical software platform. Meta-regression of SMD of a marker was carried out using mixed-effects model with differences in age and sex (measured as percentage of male patients) and also with differences in neutrophil-to-lymphocyte ratio and CD4⁺/CD8⁺ T-cell count ratio across groups as modulators.

Publication bias in the studies was analyzed using Funnel Plot and Egger’s regression test. Sensitivity of meta-analysis results was assessed by repeating the analysis with leaving out one study at a time and observing significant changes in heterogeneity and summary effect.

Classifier Development

We built a classifier using logistic regression model for categorization of patient groups in to severe and non-severe categories based on mean values of cytokines in the groups. Classifier performance using individual cytokine values or combination of multiple cytokine values are assessed from the Receiver Operating Characteristics (ROC) curve analysis and the area under the curve (AUC).

Results

Study Details

The search yielded a total of 99 “hits” which were screened to select 18 articles containing cytokine levels of severe and non-severe patients reported from clinical studies (Fig. 1). All 18 selected studies were conducted in China and included 1,242 non-severe and 915 severe COVID-19 patients (Table 1). Out of the 18 studies, 7 were non-peer reviewed studies²⁶⁻³² published online in preprint archives.

Table 1: Details of selected studies

Author (year)	Non-severe patients			Severe Patients			Clinical Definitions of Severe Patients	Cytokines Measured
	n	Age	Male %	n	Age	Male %		
Chen, 2020 ¹⁵	10	50.3 (10.1)	70.0	11	61.2 (7.3)	90.9	NHC guideline, pulmonary lesion	IL-6, IL-10, TNF- α
Feng, 2020 ²⁶	94	62.9 (13.7)	61.7	20	69.2 (11.1)	65.0	NHC guideline	IL-2, IL-4, IL-6, IL-10, TNF- α , INF- γ
He, 2020 ³³	12	42.3 (16.8)	31.1	16	62.3 (16.7)	53.6	NHC guideline	IL-2, IL-4, IL-6, IL-10, TNF- α , INF- γ
Lv, 2020 ³⁴	115	54.3 (41.5)	50.4	155	58.7 (47.4)	49.7	Not specified	IL-2, IL-4, IL-6, IL-10, TNF- α , INF- γ

Author (year)	Non-severe patients			Severe Patients			Clinical Definitions of Severe Patients	Cytokines Measured
	n	Age	Male %	n	Age	Male %		
Nie, 2020 ²⁷	72	40.3 (19.3)	29.1	25	57.3 (15)	52.0	NHC guideline, pulmonary lesion	IL-2, IL-4, IL-6, IL-10, TNF- α , INF- γ
Qin, 2020 ¹⁶	166	52.1 (15.4)	48.2	286	57 (13.3)	54.2	NHC guideline	IL-6, IL-10, TNF- α
Shi, 2020 ²⁸	22	49.7 (12)	59.7	21	59 (17.3)	72.4	NHC guideline, pulmonary lesion	IL-2, IL-4, IL-6, IL-10, TNF- α , INF- γ
Song, 2020 ²⁹	31	48 (16.5)	51.6	42	55.9 (12.2)	71.4	NHC guideline, pulmonary lesion	IL-2, IL-4, IL-6, IL-10, TNF- α , INF- γ
Wan, 2020 ²²	102	43.1 (13.1)	53.9	21	61.3 (15.6)	52.4	NHC guideline	IL-4, IL-6, IL-10, TNF- α , INF- γ
Wang, 2020 ³⁵	55	40 (14.1)	45.0	14	69.8 (11.4)	50.0	NHC guideline with SpO ₂ < 90%	IL-2, IL-4, IL-6, IL-10, TNF- α
Wei, Su, 2020 ³⁶	131	60.1 (12.4)	45.0	98	69.7 (11.6)	60.0	NHC guideline, pulmonary lesion	IL-2, IL-4, IL-6, IL-10, TNF- α , INF- γ
Xu, 2020 ³⁷	80	55.7 (17)	37.5	45	57.7 (15.7)	68.9	NHC guideline	IL-6, IL-10
Zhang, Zhou, 2020 ³⁰	44	53.5 (20.1)	47.7	21	58.3 (13.9)	71.4	Not specified	IL-2, IL-4, IL-6, IL-10, TNF- α , INF- γ
Zhang, Wang, 2020 ³¹	29	44.3 (15.8)	58.6	14	61.7 (9.2)	35.7	NHC guideline	IL-2, IL-4, IL-6, IL-10, TNF- α , INF- γ
Zhang, Yu, 2020 ³⁸	93	38.2 (12.2)	34.4	18	63.3 (24.9)	77.8	WHO guideline	IL-2, IL-4, IL-6, IL-10, TNF- α , INF- γ
Zhao, 2020 ³²	53	44.8 (15.9)	43.4	18	63.9 (17.2)	38.9	NHC guideline	IL-2, IL-4, IL-6, IL-10, TNF- α , INF- γ
Zheng, 2020 ³⁹	22	46.9 (14.7)	40.9	74	56.8 (13.7)	66.2	NHC guideline	IL-2, IL-4, IL-6, IL-10, TNF- α , INF- γ
Zhu, 2020 ⁴⁰	111	50 (15.5)	65.8	16	57.5 (11.7)	56.3	NHC guideline, pulmonary lesion	IL-2, IL-4, IL-6, IL-10, TNF- α , INF- γ

NHC guideline: (a) Respiratory distress, $RR \geq 30/\text{min}$, (b) Oxygen saturation level (SpO_2) $\leq 93\%$ at rest and (c) Arterial blood oxygen partial pressure (PaO_2) /oxygen concentration (FiO_2) ≤ 300 mm Hg.

Pulmonary lesion: $>50\%$ lesion progression within 24-48h in pulmonary imaging

WHO guideline: Adolescent or adult with clinical signs of pneumonia (fever, cough, dyspnoea, fast breathing) plus one of the following: respiratory rate > 30 breaths/min; severe respiratory distress; or $SpO_2 < 90\%$ on room air

Age in mean (SD)

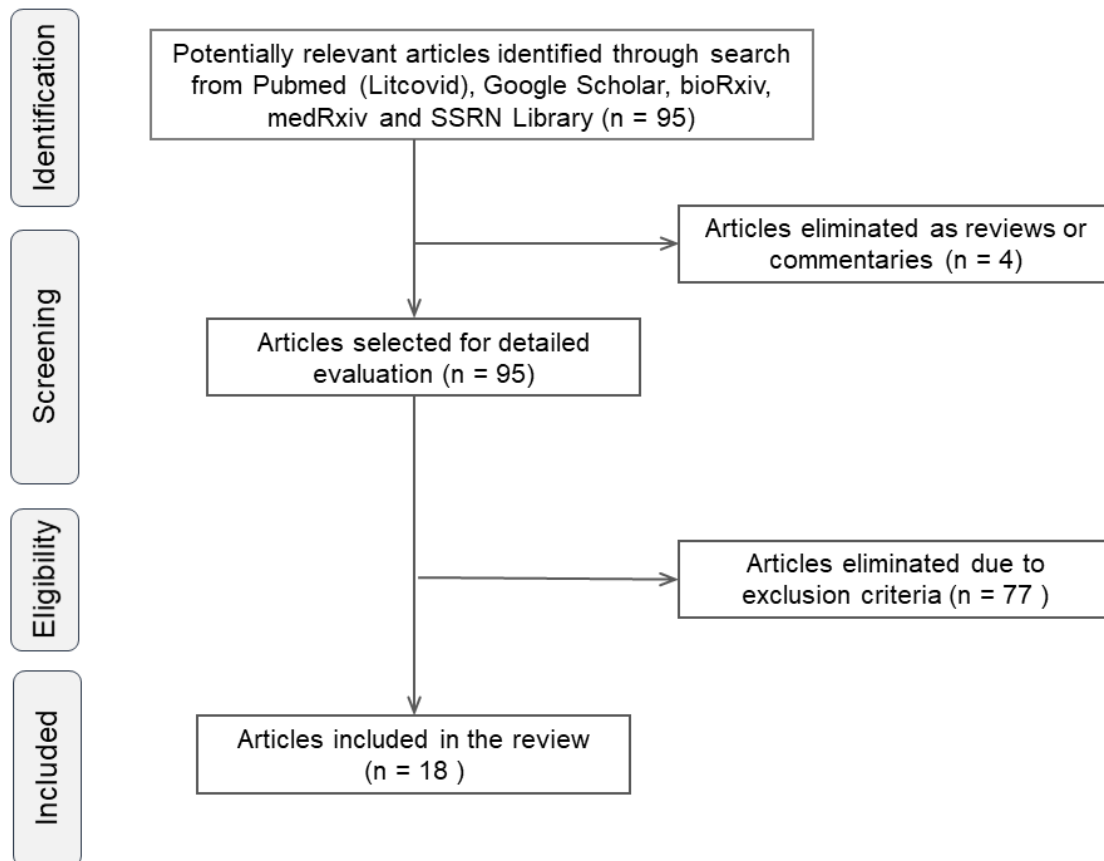


Figure 1: Workflow for selection of studies

In most studies the severe patient group was designated based on National Health Commission of China guidelines⁴¹ that specifies (a) Respiratory distress, $RR \geq 30/\text{min}$, (b) Oxygen saturation level (SpO_2) $\leq 93\%$ at rest and (c) Arterial blood oxygen partial pressure (PaO_2) /oxygen concentration (FiO_2) ≤ 300 mm Hg. For some studies, pulmonary lesion progression $> 50\%$ within 24-48 hours on imaging was used as additional criteria. One study used WHO guideline⁴² that categorizes severe patients as adolescent or adult with clinical signs of pneumonia (fever, cough, dyspnoea, fast breathing) plus one of the

following: respiratory rate > 30 breaths/min; severe respiratory distress; or SpO₂ < 90% on room air.

Weighted mean of age of patients in severe group (59.7y, range 55.9 – 69.8) was higher than the non-severe group (50.2y, range 38.2 – 62.9). Severe group also had larger percentage of male patients (57.8%, range 35.7 – 90.9) than non-severe group (48.4%, range 29.1 – 70.0). Most commonly measured cytokines in these 18 studies included IL-2, IL-4, IL-6, IL-10, TNF- α and IFN- γ . However, only 13 studies contained measurement of all six cytokines, and hence the meta-analysis for each cytokine was carried out across these 13 studies.

Meta-analysis of Cytokine Levels

Meta-analysis for SMD value of each marker using a random-effects model showed moderate and statistically significant elevation in severe patients for only two cytokines viz. IL-6 (SMD 0.53, 95% CI: 0.26 – 0.80, $p < 0.001$) (Fig. 2) and IL-10 (SMD 0.64, 95% CI: 0.38 – 0.91, $p < 0.0001$) (Fig. 3). Summary effect size of other markers IL-2 ($p = 0.281$), IL-4 ($p = 0.305$) and TNF- α ($p = 0.258$) were not significant. Level of IFN- γ , the type II interferon, showed a weak elevation in severe group (SMD 0.11, 95% CI: -0.01 – 0.23, $p = 0.078$) with moderate significance (Table 2).

Table 2: Meta-analysis result summary of all six cytokines

Cytokine	Random Effect Model SMD (95% CI)	SMD p.value	Heterogeneity (I²)
IL-2	0.12 (-0.10 - 0.35)	0.281	66.9%
IL-4	0.15 (-0.13 - 0.42)	0.305	79.2%
IL-6	0.53 (0.26 - 0.80)	0.0001	72.0%
IL-10	0.65 (0.38 - 0.91)	<0.0001	73.0%
TNF- α	0.10 (-0.08 - 0.28)	0.258	50.8%
IFN- γ	0.11 (-0.01 - 0.23)	0.078	0%

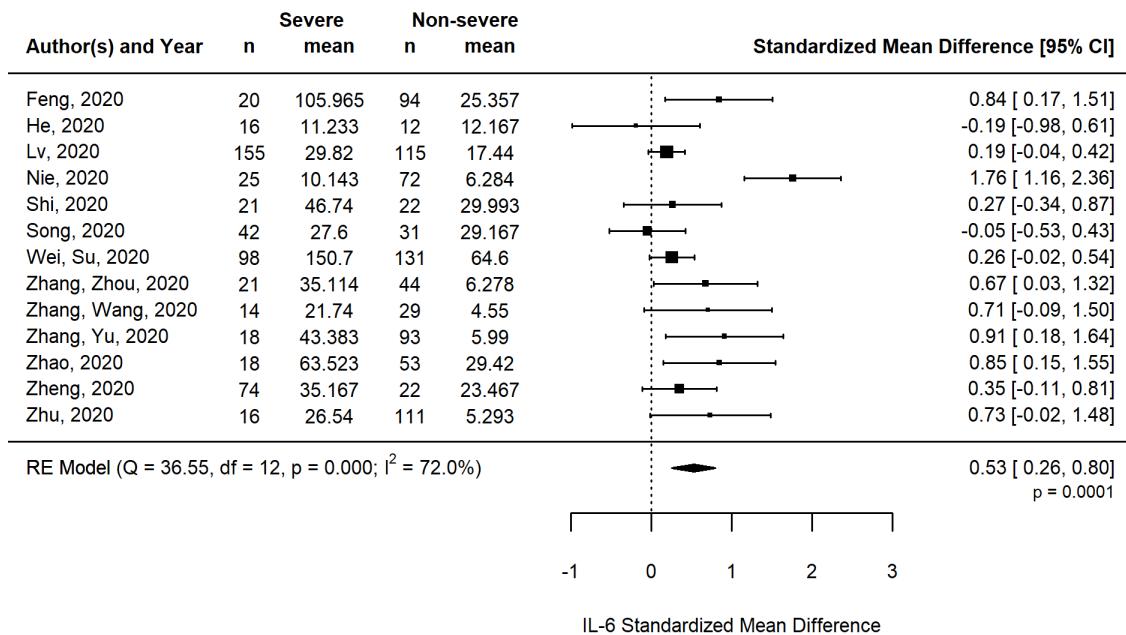


Figure 2: Standardized mean difference of IL-6 between severe and non-severe COVID-19 patients

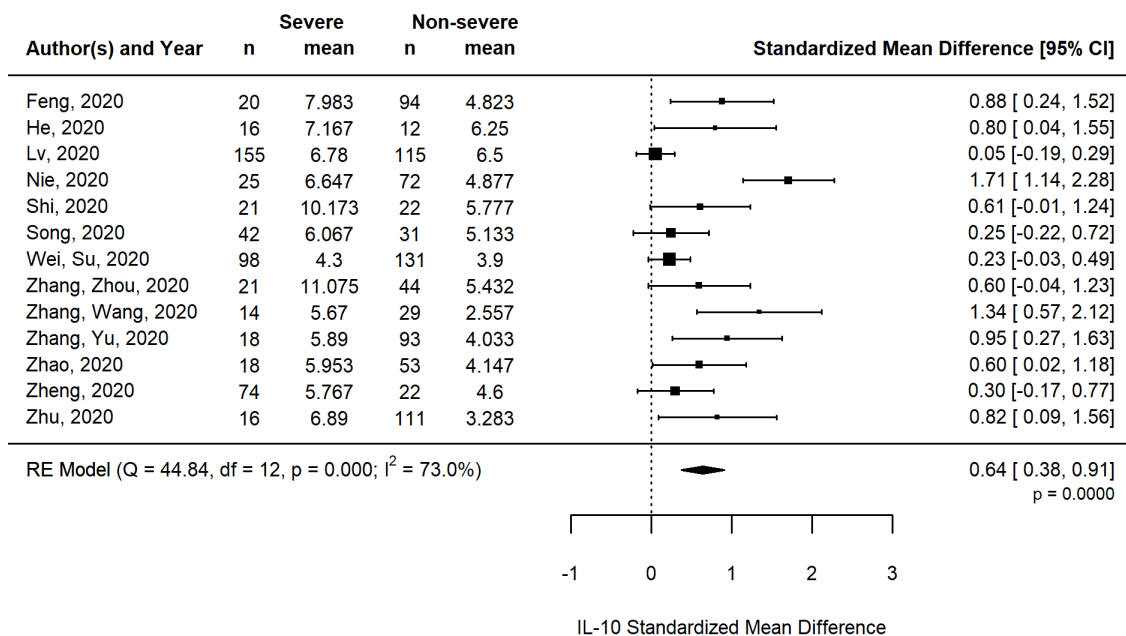


Figure 3: Standardized mean difference of IL-10 between severe and non-severe COVID-19 patients

Meta-Regression with Age and Gender Difference

Summary effects of both IL-6 and IL-10 showed substantial heterogeneity ($I^2 \sim 72-73\%$) source of which was explored by carrying out meta-regression of IL-6 and IL-10 using (i) SMD of patient age and (ii) difference in male percentage between severe and non-severe groups as moderators in a mixed-effects model. Results revealed IL-10 levels having a dependence on the age difference (coefficient 0.63, $p = 0.012$), whereas the dependence of IL-6 on age was not significant ($p > 0.05$, Fig. 4). No dependence of IL-6 and IL-10 levels were found on gender expressed as difference of male percentage between the two groups (Supplementary Fig. S1). Above results ascribe some of the observed heterogeneity in IL-6 and IL-10 SMD to difference in average age between severe and non-severe group.

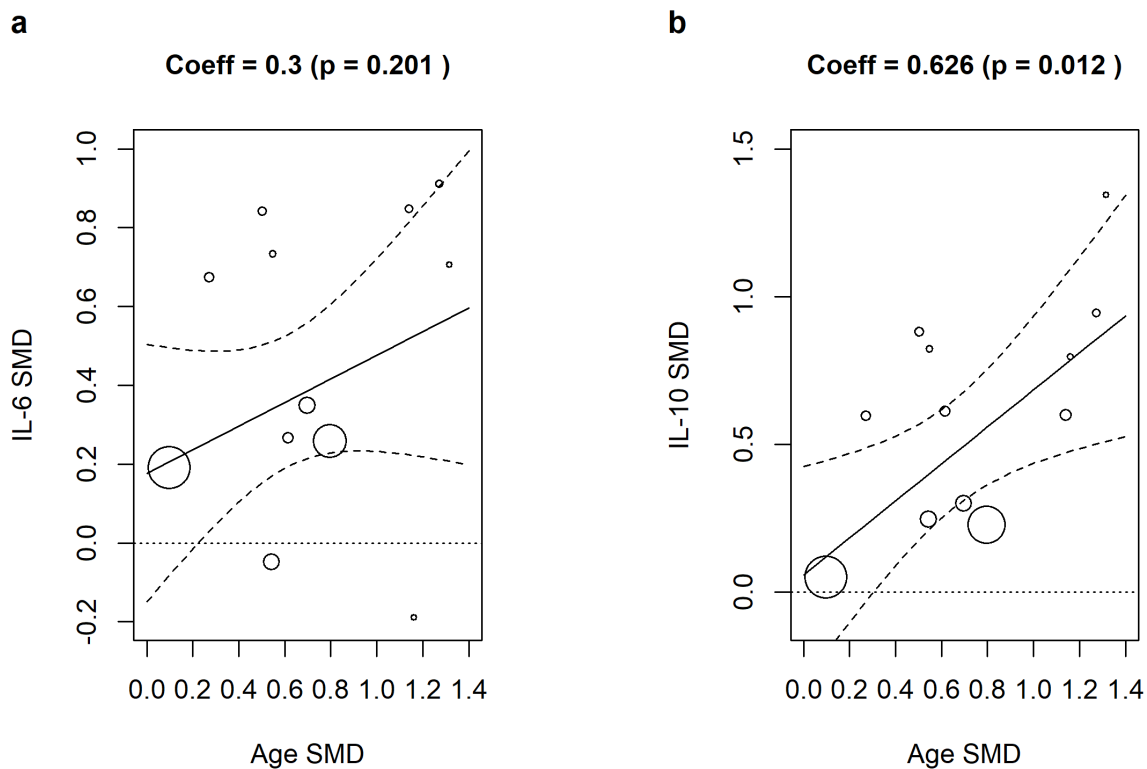


Figure 4: Meta-regression bubble plots of (a) IL-6 and (b) IL-10 SMD with difference in age between severe and non-severe groups

Relationship with Immune Cells

Neutrophil to Lymphocyte ratio (NLR) has been explored as a prognostic marker for COVID-19, with high level of NLR associated with severity of the disease^{43,44} or with higher mortality rates^{45,46}. More specific subsets of the Lymphocytes, especially the CD4⁺ and CD8⁺ T-cell counts are found to be depleted in severe COVID-19 patients^{17,47}.

However, meta-analysis across multiple studies did not indicate any significant change in the CD4+/CD8+ T-cell count ratio in severe COVID-19 patients⁴⁸. Our synthesis shows similar results with SMD of NLR as 0.71 (95% CI: 0.14 – 1.28, $p = 0.014$) (Supplementary Fig. S2) indicating significant increase in patients with severe disease, whereas the SMD of CD4+/CD8+ T-cell ratio was not significantly different across the groups (Supplementary Fig. S3).

We performed a meta-regression analysis of the SMD values of IL-6 and IL-10 on NLR and CD4+/CD8+ T-cell count ratio to assess if the observed heterogeneity could be ascribed to the variation of lymphocytes. Results showed IL-10 having a moderate dependence on NLR ($p < 0.1$) whereas IL-6 SMD was correlated with CD4+/CD8+ T-cell count ratio ($p < 0.05$). There was no significant dependent of IL-10 on NLR or IL-6 on CD4+/CD8+ T-cell count ratio (Supplementary Figs. S4 and S5).

Classifier Performance

Our results indicate that out of the 6 cytokines analyzed, levels of only the pro-inflammatory IL-6 and the immuno-suppressive IL-10 are significantly elevated in the severe group of patients, an observation reported in other studies as well^{23,49}.

This prompted us to assess the prognostic potential of these markers by developing a logistic regression model using IL-6 and IL-10 mean values as covariates to classify the patient groups as severe and non-severe across all 18 studies. Model using both IL-6 and IL-10 as input parameters showed an overall accuracy of 91.7% and area under the corresponding ROC curve as 0.957, which has higher than the corresponding values using only IL-6 (accuracy 77.8%, AUC 0.821) and only-IL-10 (accuracy 80.6%, AUC 0.878) as input parameters (Table 3, Fig. 5). Model with both IL-6 and IL-10 showed nearly 100% specificity and 83.3% sensitivity for classification in severe and non-severe categories.

Table 3: Classifier performance summary using only IL-6, only IL-10 and both IL-6 and IL-10 as input variables

Classifier	Accuracy (%)	Sensitivity	Specificity	AUC
IL-6	77.8	66.7	88.9	0.821
IL-10	80.6	61.1	100	0.878
Both IL-6 and IL-10	91.7	83.3	100	0.957

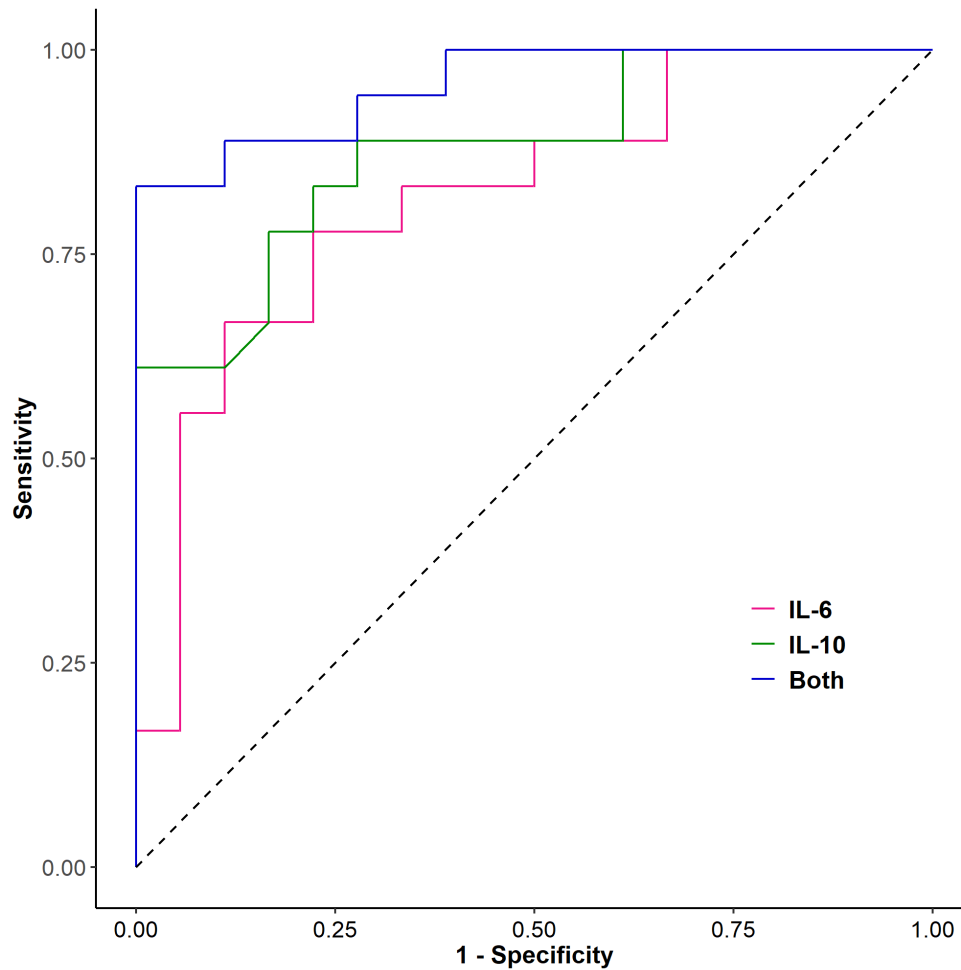


Figure 5: ROC curve for classifier performance using only IL-6, only-10 and both IL-6 and IL-10 as input parameters

Limitations

Primary limitation of this meta-analysis is that the studies are restricted only to Chinese ethnicity, which was not by design but due to the fact that most initial studies were reported from this geographic region. Also 7 of the 18 studies were non-peer reviewed publications selected as per search strategy. There was some heterogeneity in clinical criteria for severe disease as shown in Table 1.

Publication bias towards higher SMD of IL-10 levels reported in smaller-size studies manifested as asymmetry in Funnel plot and Egger's regression test ($p < 0.001$), whereas the corresponding bias was not significant ($p = 0.151$) for IL-6 (Fig. 6). Sensitivity analysis of the studies showed a large reduction of heterogeneity in IL-6 (I^2 value from 72% to 25%) and a moderate reduction for IL-10 (73% to 55%) by leaving out one particular study from the analysis (Supplementary Fig. S6).

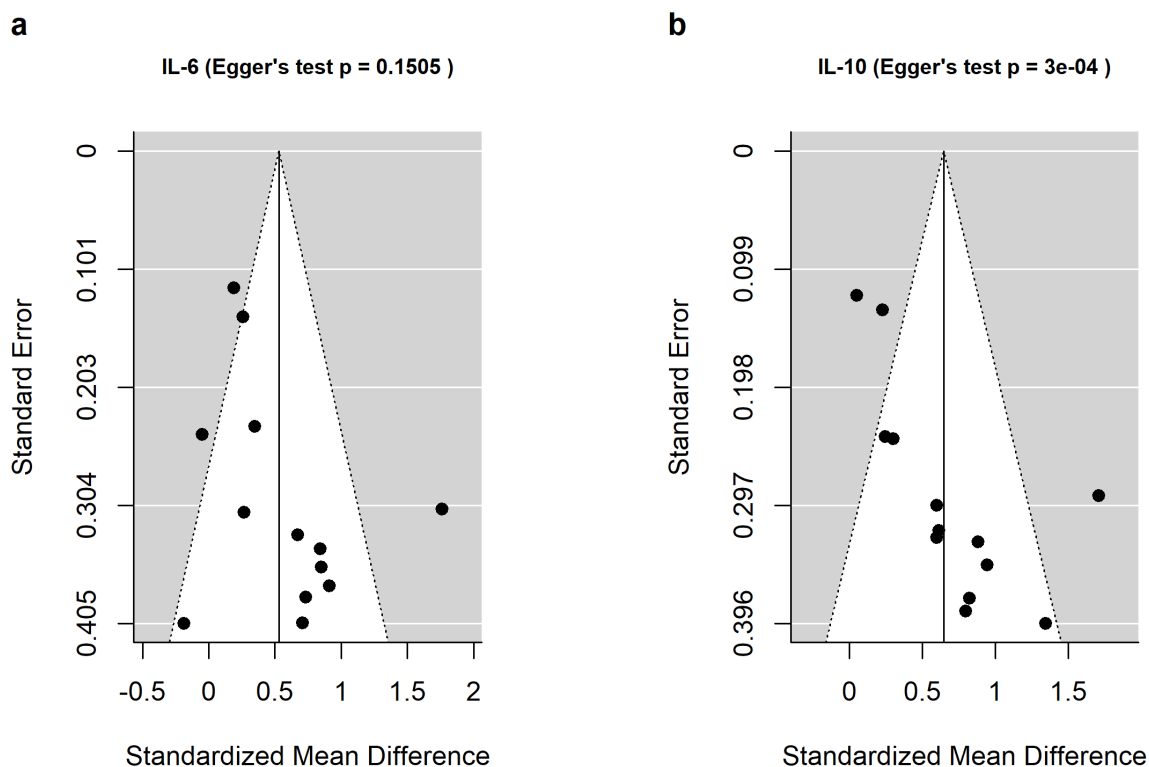


Figure 6: Funnel plots depicting publication bias in (a) IL-6 and (b) IL-10 meta-analysis

Discussion

As the spread of COVID-19 becomes prevalent in most societies, a suitable prognostic test that can predict possible progression of patient to a severe state of the disease with reasonable accuracy is the need of the hour. Though NLR is seen as a critical parameter that is elevated in the severe COVID-19 patients, its use as a possible prognostic factor is not yet established. On the other hand, a test based on serum marker can have a wider deployment in varied clinical settings.

A recent proteomics study⁵⁰ predicted similar classification performance for severe and non-severe COVID19 patients using 22 serum proteins and 7 metabolites as covariates. However, a proteomics infrastructure is not so common in a clinic, limiting clinical utility of this test.

Another study²³ presented univariate classifier results between mild and severe patients using each cytokine as a diagnostic factor individually and found good performance with IL-6, IL-10 and IFN- γ as individual covariates. This model used individual patient data and

showed maximal classifier performance using IL-6 as covariate (sensitivity 82.4% and specificity 78.5%). Our analysis, though using mean values of patient groups, shows much improved performance when both IL-6 and IL-10 are used as covariates.

Conclusion

Our findings indicate a possible dysregulation in immune response against COVID-19, characterized by two counter-acting cytokines IL-6 and IL-10, shifts the balance between non-severe to severe category of patients, and hence measurement of both markers is necessary to demarcate the boundary. Availability of individual patient-level IL-6 and IL-10 data of past studies or initiation of future clinical studies will help to validate this model and establish it for routine clinical use.

Declaration of Interest

None

Funding

This research did not receive any specific grant from funding agencies in the public, commercial, or not-for-profit sectors.

Author Contributions

SKD: Conceptualization, Literature curation, Analysis, Manuscript drafting, VK: Literature collection and curation, SD: Clinical perspective, MD and SG: Manuscript drafting, editing and review

Acknowledgement

SKD acknowledges Prof. Joy Kuri, Chair, Department of Electronic Science and Engineering, Indian Institute of Science, Bangalore for providing the computational resources.

Supplementary Material

Enclosed

References

1. Coronavirus Disease (COVID-19) Situation Report - 199. World Health Organization. Published 2020. Accessed August 7, 2020. <https://www.who.int/emergencies/diseases/novel-coronavirus-2019/situation-reports>
2. Huang C, Wang Y, Li X, et al. Clinical features of patients infected with 2019 novel coronavirus in Wuhan, China. *Lancet*. 2020;395(10223):497-506. doi:10.1016/S0140-6736(20)30183-5
3. Kawai T, Akira S. Innate immune recognition of viral infection. *Nat Immunol*. 2006;7(2):131-137. doi:10.1038/ni1303
4. Turner MD, Nedjai B, Hurst T, Pennington DJ. Cytokines and chemokines: At the crossroads of cell signalling and inflammatory disease. *Biochim Biophys Acta - Mol Cell Res*. 2014;1843(11):2563-2582. doi:10.1016/j.bbamcr.2014.05.014
5. Rojas JM, Avia M, Martín V, Sevilla N. IL-10: A multifunctional cytokine in viral infections. *J Immunol Res*. 2017;2017. doi:10.1155/2017/6104054
6. Tisoncik JR, Korth MJ, Simmons CP, Farrar J, Martin TR, Katze MG. Into the Eye of the Cytokine Storm. *Microbiol Mol Biol Rev*. 2012;76(1):16-32. doi:10.1128/membr.05015-11
7. Lau SKP, Lau CCY, Chan KH, et al. Delayed induction of proinflammatory cytokines and suppression of innate antiviral response by the novel Middle East respiratory syndrome coronavirus: Implications for pathogenesis and treatment. *J Gen Virol*. 2013;94(PART 12):2679-2690. doi:10.1099/vir.0.055533-0
8. Channappanavar R, Perlman S. Pathogenic human coronavirus infections: causes and consequences of cytokine storm and immunopathology. *Semin Immunopathol*. 2017;39(5):529-539. doi:10.1007/s00281-017-0629-x
9. Ragab D, Salah Eldin H, Taeimah M, Khattab R, Salem R. The COVID-19 Cytokine Storm; What We Know So Far. *Front Immunol*. 2020;11(June):1-4. doi:10.3389/fimmu.2020.01446
10. Costela-Ruiz VJ, Illescas-Montes R, Puerta-Puerta JM, Ruiz C, Melguizo-Rodríguez L. SARS-CoV-2 infection: The role of cytokines in COVID-19 disease. *Cytokine Growth Factor Rev*. 2020;(May):0-1. doi:10.1016/j.cytogfr.2020.06.001

11. Coomes EA, Haghbayan H. Interleukin-6 in COVID-19: A Systematic Review and Meta-Analysis. *medRxiv*. Published online April 3, 2020:2020.03.30.20048058. doi:10.1101/2020.03.30.20048058
12. Zeng F, Huang Y, Guo Y, et al. Association of inflammatory markers with the severity of COVID-19: A meta-analysis. *Int J Infect Dis*. 2020;96:467-474. doi:10.1016/j.ijid.2020.05.055
13. Aziz M, Fatima R, Assaly R. Elevated Interleukin-6 and Severe COVID-19: A Meta-Analysis. *J Med Virol*. Published online 2020:0-1. doi:10.1002/jmv.25948
14. Lagunas-Rangel FA, Chávez-Valencia V. High IL-6/IFN- γ ratio could be associated with severe disease in COVID-19 patients. *J Med Virol*. Published online 2020. doi:10.1002/jmv.25900
15. Chen G, Wu D, Guo W, Cao Y, Huang D, Wang H. Clinical and immunologic features in severe and moderate forms of Coronavirus Disease 2019. *J Clin Invest*. 2020;27(1095):16-20023903.
16. Qin C, Zhou L, Hu Z, et al. Dysregulation of immune response in patients with COVID-19 in Wuhan, China. *Clin Infect Dis*. 2020;71(15):762-768. doi:10.1093/cid/ciaa248
17. Diao B, Wang C, Tan Y, et al. Reduction and Functional Exhaustion of T Cells in Patients With Coronavirus Disease 2019 (COVID-19). *Front Immunol*. 2020;11(May):1-7. doi:10.3389/fimmu.2020.00827
18. Yang Z, Liu J, Zhou Y, Zhao X, Zhao Q, Liu J. The effect of corticosteroid treatment on patients with coronavirus infection: a systematic review and meta-analysis. *J Infect*. 2020;81:13-20. doi:10.1016/j.jinf.2020.03.062
19. Duret PM, Sebbag E, Mallick A, Gravier S, Spielmann L, Messer L. Recovery from COVID-19 in a patient with spondyloarthritis treated with TNF-alpha inhibitor etanercept. *Ann Rheum Dis*. Published online May 22, 2020. doi:10.1136/annrheumdis-2020-217362
20. Bezzio C, Manes G, Bini F, Pellegrini L, Saibeni S. Infliximab for severe ulcerative colitis and subsequent SARS-CoV-2 pneumonia: a stone for two birds. *Gut*. Published online June 17, 2020. doi:10.1136/gutjnl-2020-321760
21. Jamilloux Y, Henry T, Belot A, et al. Should we stimulate or suppress immune

- responses in COVID-19? Cytokine and anti-cytokine interventions. *Autoimmun Rev.* 2020;(April):102567. doi:10.1016/j.autrev.2020.102567
22. Wan S, Yi Q, Fan S, et al. Relationships among lymphocyte subsets, cytokines, and the pulmonary inflammation index in coronavirus (COVID-19) infected patients. *Br J Haematol.* 2020;(April):428-437. doi:10.1111/bjh.16659
 23. Han H, Ma Q, Li C, et al. Profiling serum cytokines in COVID-19 patients reveals IL-6 and IL-10 are disease severity predictors. *Emerg Microbes Infect.* 2020;9(1):1123-1130. doi:10.1080/22221751.2020.1770129
 24. Wan X, Wang W, Liu J, Tong T. Estimating the sample mean and standard deviation from the sample size , median , range and / or interquartile range. *BMC Med Res Methodol.* 2014;14(1):135.
 25. Viechtbauer W. Conducting meta-analyses in R with the metafor. *J Stat Softw.* 2010;36(3):1-48.
 26. Feng X, Li P, Ma L, et al. Clinical Characteristics and Short-Term Outcomes of Severe Patients with COVID-19 in Wuhan, China. *medRxiv.* Published online 2020:2020.04.24.20078063. doi:10.1101/2020.04.24.20078063
 27. Nie S, Zhao X, Zhao K, Zhang Z, Zhang Z, Zhang Z. Metabolic disturbances and inflammatory dysfunction predict severity of coronavirus disease 2019 (COVID-19): a retrospective study. *medRxiv.* Published online 2020:2020.03.24.20042283. doi:10.1101/2020.03.24.20042283
 28. Shi H, He L, Sun W, et al. Clinical Characteristics and Prognostic Factors of 148 COVID-19 Cases in a Secondary Epidemic Area. *SSRN Electron J.* Published online 2020. doi:10.2139/ssrn.3572911
 29. Song C-Y, Xu J, He J-Q, Lu Y-Q. COVID-19 early warning score: a multi-parameter screening tool to identify highly suspected patients. *medRxiv.* Published online 2020:2020.03.05.20031906. doi:10.1101/2020.03.05.20031906
 30. Zhang B, Zhou X, Zhu C, et al. Immune phenotyping based on neutrophil-to-lymphocyte ratio and IgG predicts disease severity and outcome for patients with COVID-19. *medRxiv.* Published online 2020:2020.03.12.20035048. doi:10.1101/2020.03.12.20035048
 31. Zhang H, Wang X, Fu Z, et al. Potential Factors for Prediction of Disease Severity of

- COVID-19 Patients. *medRxiv*. Published online 2020:2020.03.20.20039818.
doi:10.1101/2020.03.20.20039818
32. Zhao Y, Qin L, Zhang P, et al. Longitudinal Profiling of Cytokines and Chemokines in COVID-19 Reveals Inhibitory Mediators IL-1Ra and IL-10 Are Associated with Disease Severity While Elevated RANTES Is an Early Predictor of Mild Disease. *SSRN Electron J*. Published online 2020. doi:10.2139/ssrn.3576836
 33. He R, Lu Z, Zhang L, et al. The clinical course and its correlated immune status in COVID-19 pneumonia. *J Clin Virol*. 2020;127(April):104361. doi:10.1016/j.jcv.2020.104361
 34. Lv Z, Cheng S, Le J, et al. Clinical characteristics and co-infections of 354 hospitalized patients with COVID-19 in Wuhan, China: a retrospective cohort study. *Microbes Infect*. Published online 2020. doi:10.1016/j.micinf.2020.05.007
 35. Wang Z, Yang B, Li Q, Wen L, Zhang R. Clinical Features of 69 Cases with Coronavirus Disease 2019 in Wuhan, China. *Clin Infect Dis*. 2020;71(15):769-777. doi:10.1093/cid/ciaa272
 36. Wei X, Su J, Yang K, et al. Elevations of serum cancer biomarkers correlate with severity of COVID-19. *J Med Virol*. Published online 2020:0-2. doi:10.1002/jmv.25957
 37. XU B, FAN C yu, WANG A lu, et al. Suppressed T cell-mediated immunity in patients with COVID-19: A clinical retrospective study in Wuhan, China. *J Infect*. 2020;81(1):e51-e60. doi:10.1016/j.jinf.2020.04.012
 38. Zhang J, Yu M, Tong S, Liu LY, Tang L V. Predictive factors for disease progression in hospitalized patients with coronavirus disease 2019 in Wuhan, China. *J Clin Virol*. 2020;127(March):104392. doi:10.1016/j.jcv.2020.104392
 39. Zheng S, Fan J, Yu F, et al. Viral load dynamics and disease severity in patients infected with SARS-CoV-2 in Zhejiang province, China, January-March 2020: Retrospective cohort study. *BMJ*. 2020;369(March):1-8. doi:10.1136/bmj.m1443
 40. Zhu Z, Cai T, Fan L, et al. Clinical value of immune-inflammatory parameters to assess the severity of coronavirus disease 2019. *Int J Infect Dis*. 2020;95:332-339. doi:10.1016/j.ijid.2020.04.041
 41. National Health Commission & State Administration of Traditional Chinese

- Medicine. *Diagnosis and Treatment Protocol for Novel Coronavirus Pneumonia*.; 2020.
<https://www.chinadaily.com.cn/pdf/2020/1.Clinical.Protocols.for.the.Diagnosis.and.Treatment.of.COVID-19.V7.pdf%0A>
42. World Health Organization. (2020). *Clinical Management of COVID-19: Interim Guidance, 27 May 2020*.; 2020. <https://apps.who.int/iris/handle/10665/332196>.
 43. Ciccullo A, Borghetti A, Zileri Dal Verme L, et al. Neutrophil-to-lymphocyte ratio and clinical outcome in COVID-19: a report from the Italian front line. *Int J Antimicrob Agents*. 2020;56(15892). doi:10.1016/j.ijantimicag.2020.106017
 44. Kong M, Zhang H, Cao X, Mao X, Lu Z. Higher level of Neutrophil-to-Lymphocyte is associated with severe COVID-19. *Epidemiol Infect*. 2020;148:1-12. doi:10.1017/S0950268820001557
 45. Liu Y, Du X, Chen J, et al. Neutrophil-to-lymphocyte ratio as an independent risk factor for mortality in hospitalized patients with COVID-19. *J Infect*. 2020;81:6-12. doi:10.1016/j.jinf.2020.04.002
 46. Tatum D, Taghavi S, Houghton A, Stover J, Toraih E, Duchesne J. Neutrophil-to-Lymphocyte Ratio and Outcomes in Louisiana Covid-19 Patients. *Shock*. 2020;Publish Ah(225). doi:10.1097/shk.0000000000001585
 47. Liu Z, Long W, Tu M, et al. Lymphocyte subset (CD4+, CD8+) counts reflect the severity of infection and predict the clinical outcomes in patients with COVID-19. *J Infect*. 2020;81:318-356. doi:10.1016/j.jinf.2020.03.054
 48. Zhang H, Wu T. CD4+T, CD8+T counts and severe COVID-19: A meta-analysis. *J Infect*. 2020;81(3):e82-e84. doi:10.1016/j.jinf.2020.06.036
 49. Wang F, Hou H, Luo Y, et al. The laboratory tests and host immunity of COVID-19 patients with different severity of illness. 2019;2(7):1-11.
 50. Shen B, Yi X, Sun Y, et al. Article Proteomic and Metabolomic Characterization of COVID-19 Patient Sera II Article Proteomic and Metabolomic Characterization of COVID-19 Patient Sera. Published online 2020:59-72. doi:10.1016/j.cell.2020.05.032