

Article

Pharmacological inhibition of the kinin-kallikrein system in severe COVID-19 – A proof-of-concept study

Eli Mansour¹, Andre C. Palma¹, Raisa G. Ulaf¹, Luciana C. Ribeiro¹, Ana Flavia Bernardes¹, Thyago A. Nunes¹, Marcus V. Agrela¹, Bruna Bombassaro², Milena Monfort-Pires², Rafael L. Camargo², Eliana P. Araujo^{2,3}, Natalia S. Brunetti⁴, Alessandro S. Farias⁴, Antônio Luís E. Falcão⁵, Thiago Martins Santos¹, Plinio Trabasso¹, Rachel P. Dertkigil⁶, Sergio S. Dertkigil⁶, Maria Luiza Moretti¹, Licio A. Velloso^{1,2}

¹Department of Internal Medicine, School of Medical Sciences, University of Campinas, Campinas, São Paulo, Brazil

²Obesity and Comorbidities Research Center, University of Campinas, Campinas, São Paulo, Brazil

³School of Nursing, University of Campinas, Campinas, São Paulo, Brazil.

⁴Autoimmune Research Lab, Department of Genetics, Microbiology and Immunology, Institute of Biology, University of Campinas, Campinas, Brazil

⁵Department of Surgery, School of Medical Sciences, University of Campinas, Campinas, São Paulo, Brazil

⁶Department of Radiology, School of Medical Sciences, University of Campinas, Campinas, São Paulo, Brazil

Corresponding author; Licio A. Velloso, lavellos@unicamp.br

Abstract

Coronavirus disease-19 (COVID-19) can develop into a severe respiratory syndrome that results in up to 40% mortality. Acute lung inflammatory edema is a major pathological finding in autopsies explaining O₂ diffusion failure and hypoxemia. Only dexamethasone has been shown to reduce mortality in severe cases, further supporting a role for inflammation in disease severity. SARS-CoV-2 enters cells employing angiotensin converting enzyme 2 (ACE2) as a receptor, which is highly expressed in lung alveolar cells. ACE2 is one of the components of the cellular machinery that inactivates the potent inflammatory agent bradykinin, and SARS-CoV-2 infection could interfere with the catalytic activity of ACE2, leading to accumulation of bradykinin. In this open-label, randomized clinical trial, we tested two pharmacological inhibitors of the kinin-kallikrein system that are currently approved for the treatment of hereditary angioedema, icatibant and inhibitor of C1 esterase/kallikrein, in a group of 30 patients with severe COVID-19. Neither icatibant nor inhibitor of C1 esterase/kallikrein resulted in significant changes in disease mortality and time to clinical improvement. However, both compounds promoted significant improvement of lung computed tomography scores and increased blood eosinophils, which has been reported as an indicator of disease recovery. In this small cohort, we found evidence for a beneficial role of pharmacological inhibition of the kinin-kallikrein system in two markers that indicate improved disease recovery.

Introduction

Acute respiratory failure is the leading cause of death in coronavirus disease-19 (COVID-19)^{1,2}. In severe cases, there is progressive shortening of breath and hypoxemia that often require supplementary oxygen or mechanical ventilation^{2,3}. Chest computed tomography (CT) scans reveal multiple lung opacities that are both central and peripheral and can present as ground-glass and consolidation types, usually involving two or more lobes^{4,5}. Histological examination of lung autopsy specimens identified angiocentric inflammation with mild/severe interstitial edema, linear intra-alveolar fibrin deposition and early intra-alveolar organization⁶. These findings provide an anatomopathological basis that could explain O₂ diffusion failure and hypoxemia, revealing that acute inflammation is crucial for the severe progression of disease⁷. This was further confirmed by the recent demonstration of reduced mortality in patients with severe COVID-19 who were treated with dexamethasone⁸. Despite intensive efforts to find effective therapeutic strategies, mortality rates remain high, ranging from 5% to 49%, in patients admitted to hospitals and intense care units (ICUs)⁹⁻¹³.

SARS-CoV-2, the pathogenic agent of COVID-19, enters human cells employing angiotensin converting enzyme 2 (ACE2) as a receptor¹⁴. Lung alveolar epithelial cells and macrophages express high levels of ACE2 and thus are primary targets for SARS-CoV-2¹⁵. At least two studies have shown that, different from the influenza virus, the SARS-CoV-2 infection is accompanied by low expression levels of type I and II interferons and a massive production of inflammatory cytokines^{16,17}, suggesting this virus has an efficient immunomodulatory capacity that could explain, at least in part, its pathogenicity⁷.

Physiologically, ACE2 catalyzes the reaction that inactivates the inflammatory substance DR9-bradykinin¹⁸. In an experimental model of lung inflammation, the inhibition of ACE2 increased inflammatory cell recruitment and alveolar edema, whereas the inhibition of bradykinin protected the lungs from severe inflammatory damage¹⁸. Following SARS-CoV-2 binding, ACE2 is internalized to endosomes, resulting in a subcellular shift that could affect its capacity to regulate bradykinin degradation^{17,19-22}. Here, we hypothesized that increased bradykinin levels could be one of the mediators of severe lung inflammation in COVID-19, and pharmacological inhibition of bradykinin could beneficially change the course of severe SARS-CoV-2 infection. A similar mechanism has been proposed for SARS-CoV lung damage²³.

In this proof-of-concept study, we evaluated 30 patients with severe COVID-19 that were randomized to one of the following treatments: standard care, icatibant (a bradykinin receptor 2 inhibitor) or inhibitor of C1 esterase/kallikrein (iC1e/K). The primary outcomes were death and time to clinical improvement. In this small cohort, we could not find evidence for a beneficial role of pharmacological inhibition of the kinin-kallikrein system in severe COVID-19 mortality and time to clinical improvement; however, both icatibant and iC1e/K promoted significant improvement of lung CT scores and increased blood eosinophil counts.

Results

From April 23, 2020 to June 14, 2020, 241 patients were assessed for eligibility and 30 were included in the study (Fig. 1; Suppl. Tables 1 and 2). During the study period, the total number of patients screened accounted for 90% of all patients seeking medical attention at the Hospital & Clinics of the University of Campinas due to clinical suspicion of COVID-19. Patients included in the study represented 31% of all patients diagnosed with COVID-19 during this period. Supplementary Table 1 presents the reasons for the exclusion of screened patients. Supplementary Table 2 provides the chronological sequence of inclusion and randomization. Ten patients were randomized to each group; standard care, icatibant and iC1e/K.

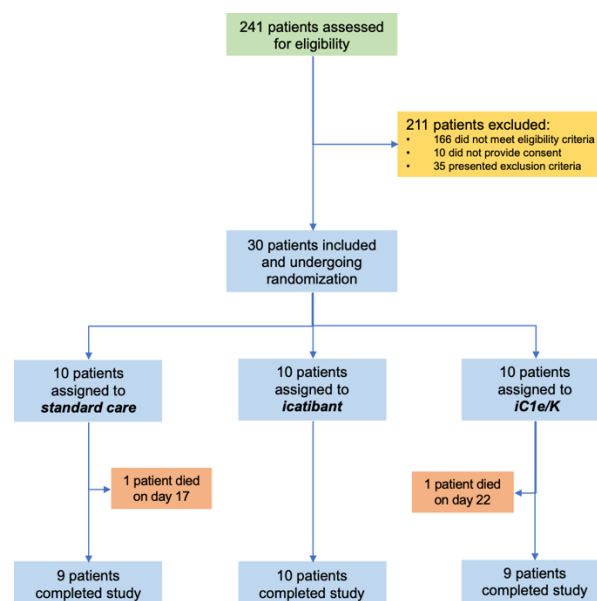


Figure 1. Schematic representation of patient screening, selection and randomization. iC1e/K, inhibitor of C1 esterase/kallikrein.

Table 1 presents the baseline parameters of all patients included in the study. The mean age was 51 years, 46% were women and the mean time to hospital admission from the onset of symptoms was eight days. The gender, age and demographics in each group were similar. The baseline body temperature, blood O₂ saturation, lung CT score, systolic blood pressure, diastolic blood pressure, white blood cells, blood lymphocytes, blood platelets, plasma glucose, serum creatinine, aspartate aminotransferase (AST), lactate dehydrogenase (LDH), creatine kinase (CK), and C-reactive protein levels in each group were similar (Table 1). At baseline, alanine aminotransferase (ALT) was significantly higher in the icatibant group; nevertheless, all patients in this group had ALT levels within the inclusion range.

Table 1. Base line parameters of patients included in the study.

Parameter	SC	Icatibant	iC1e/K	p	All patients
Female/male	5/5	3/7	6/4		14/16
Age (y)	48.9 ± 10.5	51.6 ± 9.1	54.4 ± 14.8	0.58	51.6 ± 11.5
BMI (kg/m ²)	29.6 ± 7.8	30.2 ± 5.1	32.3 ± 7.0	0.70	30.6 ± 6.7
BMI >30	4	4	6	0.59	14 (46%)
BMI >25 <30	2	4	1		7 (23%)
Symptoms onset (d)	8.8 ± 2.7	7.8 ± 2.2	8.1 ± 2.5	0.57	8.1 ± 2.5
Body temperature (°C)	36.3 ± 0.5	36.0 ± 1.2	36.6 ± 0.6	0.41	36.4 ± 1.1
>37°C (n)	2	2	2		6
SatO ₂ (%)	92.9 ± 3.3	90.7 ± 2.7	89.8 ± 7.2	0.35	91.4 ± 4.7
Lung CT score	17.9 ± 78.8	16.0 ± 6.9	19.4 ± 6.4	0.60	17.8 ± 7.3
Systolic blood pressure (mmHg)	117.4 ± 10.7	121.0 ± 10.2	127.1 ± 26.0	0.51	124 ± 18
<90 mmHg (n)	0	0	1		1
Diastolic blood pressure (mmHg)	75.5 ± 12.3	79.2 ± 10.4	75.4 ± 15.9	0.91	76.7 ± 12.7
<60 mmHg (n)	0	0	0		0
White cell count (x10 ⁹ /L)	7.78 ± 4.39	7.76 ± 4.98	7.76 ± 2.78	0.99	7.76 ± 4.0
<4 x 10 ⁹ /L (n)	2	2	1		5 (16.7%)
4-10 x 10 ⁹ /L (n)	7	6	7		20 (66.7%)
>10 x 10 ⁹ /L (n)	1	2	2		5 (16.7%)
Lymphocyte count (x10 ⁹ /L)	1.08 ± 0.29	1.08 ± 0.39	1.37 ± 0.48	0.45	1.18 ± 0.48
<1 x 10 ⁹ /l (n)	3	3	3		9
>1 x 10 ⁹ /l (n)	6	6	6		18
Platelet count (x10 ⁹ /L)	217.6 ± 55.8	217.5 ± 123.5	229.9 ± 98.2	0.97	221.7 ± 93.4
<100 x 10 ⁹ /L (n)	0	1	0		1
≥100 x 10 ⁹ /L (n)	10	9	10		29
Plasma glucose (mg/dL)	176.8 ± 94.9	158.9 ± 91.8	182.4 ± 111.4	0.81	172.7 ± 96.2
<125 (mg/dL) (n)	4	6	3		13
>125 (mg/dL) (n)	6	4	7		17

Serum creatinine (mg/dL)	0.9 ± 0.3	1.2 ± 0.9	0.9 ± 0.3	0.34	1.00 ± 0.61
<1.2 (mg/dL) (n)	9	8	9		26
>1.2 (mg/dL) (n)	1	2	1		4
AST (U/L)	63.0 ± 54.0	82.7 ± 88.9	37.3 ± 12.7	0.13	61.8 ± 62.2
<40 (U/L) (n)	4	3	4		11
>40 (U/L) (n)	6	7	5		18
ALT (U/L)	38.6 ± 35	76.7 ± 76.4	27.6 ± 13	<0.01	48.3 ± 52.7
<40 (U/L) (n)	7	2	8		17
≥40 (U/L) (n)	3	8	1		12
LDH (U/L)	308.7 ± 55.4	396.5 ± 135.2	376.5 ± 254.7	0.91	362.2 ± 176.0
<245 (U/L) (n)	1	2	2		5
≥245 (U/L) (n)	7	8	8		23
CK (U/L)	282.7 ± 245.8	299.0 ± 359.2	123.0 ± 99.9	0.24	221.0 ± 213.5
<185 (U/L) (n)	4	1	5		10
≥185 (U/L) (n)	3	1	1		4
C-Reactive Protein (mg/L)	123.2 ± 61.8	109.0 ± 81.4	110.9 ± 86.3	0.76	117.6 ± 74.3
<10 (mg/L) (n)	10	10	9		29
≥10 (mg/L) (n)	0	0	0		0

Abbreviations: ALT, alanine aminotransferase; AST, aspartate aminotransferase; BMI, body mass index; CK, creatine kinase; iC1e/K, inhibitor of C1 esterase/kallikrein; LDH, lactate dehydrogenase; SC, standard care.

Among the 30 patients included in the study, 25 were previously diagnosed with other medical conditions (Table 2). Hypertension was the leading comorbidity, affecting 50% of the patients. Diabetes and obesity were present in 47% and 43% of the patients, respectively. Overweight, dyslipidemia, hypothyroidism, asthma and fibromyalgia were also present in this cohort. Four patients were former smokers, whereas only one was currently smoking at the time of inclusion in the study (Table 2).

Upon inclusion, all patients were diagnosed with severe COVID-19 based on SARS-CoV-2 diagnosis by RT-PCR, low blood O₂ saturation levels (Table 1), high qSOFA (Fig. 2A) and high lung CT score (Table 1; Fig. 2B and Supplementary Figures 1–3); there were no significant differences in admission severity parameters among the groups.

Neither icatibant nor iC1e/K pharmacological interventions significantly modified primary outcomes as compared to the standard care group (Table 3). Overall, there were two deaths, one in the standard care group (on day 17) and one in the iC1e/K group (on day 21). Times from admission to discharge were 10.5, 11.0 and 14.2 days in the standard care, icatibant and iC1e/K groups, respectively (p=0.62), whereas times in the ICU were 4.6, 6.2 and 8.7 days in the standard care, icatibant and iC1e/K groups, respectively (p=0.71). Clinical improvement was similar among the groups, as determined by the qSOFA (Fig. 2A) and TTCl score (Fig. 2C). This was also true when

comparison was performed during the initial five days since inclusion in the study, which was the period when pharmacological intervention was undertaken (Fig. 2A, inset and Fig. 2C, inset). Nevertheless, both, icatibant and iC1e/K promoted significant reductions in lung CT scores (Fig. 2B).

Table 2. Pre-morbid conditions of patients included in the study.

Comorbidities at baseline	All patients (n:30)	SC (n:10)	icatibant (n:10)	iC1e/K (n:10)	P-value
Hypertension, n (%)	15 (50)	4 (40)	4 (40)	7 (70)	0.30
Diabetes Mellitus, n (%)	14 (46.7)	5 (50)	4 (40)	5 (50)	0.88
Obesity, n (%)	13 (43.3)	3 (30)	4 (40)	6 (60)	0.39
Overweight, n (%)	7 (23.3)	2 (20)	4 (40)	1 (10)	--
Dyslipidemia, n (%)	5 (16.67)	1 (10)	1 (10)	3 (30)	--
Former smoker, n (%)	4 (13.3)	1 (10)	1 (10)	2 (20)	--
Hypothyroidism, n (%)	2 (6.67)	0 (0)	0 (0)	2 (20)	--
Asthma, n (%)	1 (3.33)	0 (0)	0 (0)	1 (10)	--
Current smoker, n (%)	1	1 (10)	0 (0)	0 (0)	--
Fibromyalgia, n (%)	1 (3.33)	0 (0)	1 (10)	0 (0)	--

Abbreviations: iC1e/K, inhibitor of C1 esterase/kallikrein; SC, standard care.

Table 3. Primary outcomes of patients included in the study.

	SC	icatibant	iC1e/K	p	All patients
TATD (days)	10.5 ± 7.1	11.0 ± 8.9	14.2 ± 10.1	0.62	11.9 ± 8.6
TIICU (days)	4.6 ± 8.9	6.2 ± 10.5	8.7 ± 11.8	0.71	6.5 ± 10.2
Deaths	1	0	1		2

Abbreviations: iC1e/K, inhibitor of C1 esterase/kallikrein; TATD, time from admission to discharge; TIICU

Neither icatibant nor iC1e/K pharmacological interventions significantly modified blood immune cell counts as compared to the standard care group (Fig. 3A–3E and Suppl. Table 3). As compared to inclusion, the discharge white blood cell counts were unchanged in all three groups (Fig. 3A, Suppl. Table 3), lymphocytes were increased in the standard care and icatibant groups (Fig. 3B, Suppl. Table 3), neutrophils were unchanged in all three groups (Fig. 3C, Suppl. Table 3), monocytes were increased in the iC1e/K group (Fig. 3D, Suppl. Table 3) and eosinophils were increased in the icatibant and iC1e/K groups (Fig. 3E, Suppl. Table 3). The intervention did not modify the serum levels of IL-1 β (Fig. 3F), whereas IL-6 was reduced in all three groups (Fig. 3G).

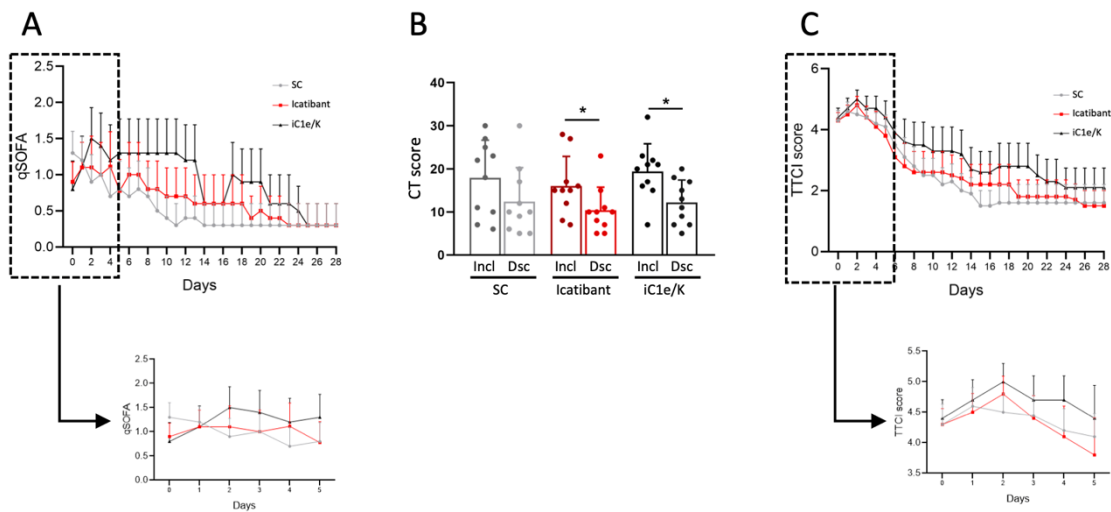


Figure 2. Major clinical and image-related outcomes. The quick sepsis-related organ failure score (qSOFA) was determined daily throughout hospitalization (A). Computed tomography lung score was obtained at inclusion and discharge (B). Time to clinical improvement (TTCl) was determined daily throughout hospitalization (C). Insets represent qSOFA (A) and TTCl (C) during the initial five days of treatment. * $p < 0.05$. Dsc, discharge; iC1e/K, inhibitor of C1 esterase/kallikrein; Incl, inclusion; SC, standard care.

At baseline, parameters related to the coagulation system were similar among all three groups (Suppl. Table 4). Neither icatibant nor iC1e/K pharmacological interventions significantly modified any of the coagulation parameters evaluated in this study (Fig. 4, Suppl. Table 4). As compared to inclusion, at discharge, blood platelets were increased in all three groups (Fig. 4A; Suppl. Table 4), whereas D-dimer (Suppl. Table 4), prothrombin time (Fig. 4B; Suppl. Table 4) and partial thromboplastin time (Fig. 4C; Suppl. Table 4) remained unchanged. There were no significant changes in blood levels of urea and creatinine (Suppl. Table 5).

During the intervention, there were no significant differences in reported adverse effects among the groups (Suppl. Table 6). As a whole, 14 patients presented with increased AST/ALT, five patients presented with diarrhea, three patients presented with nausea, three patients presented with vomiting, three patients presented with increased blood bilirubin, two patients presented with bradycardia and none of the patients presented with cardiac arrhythmias. No additional adverse effects were reported in the intervention groups.

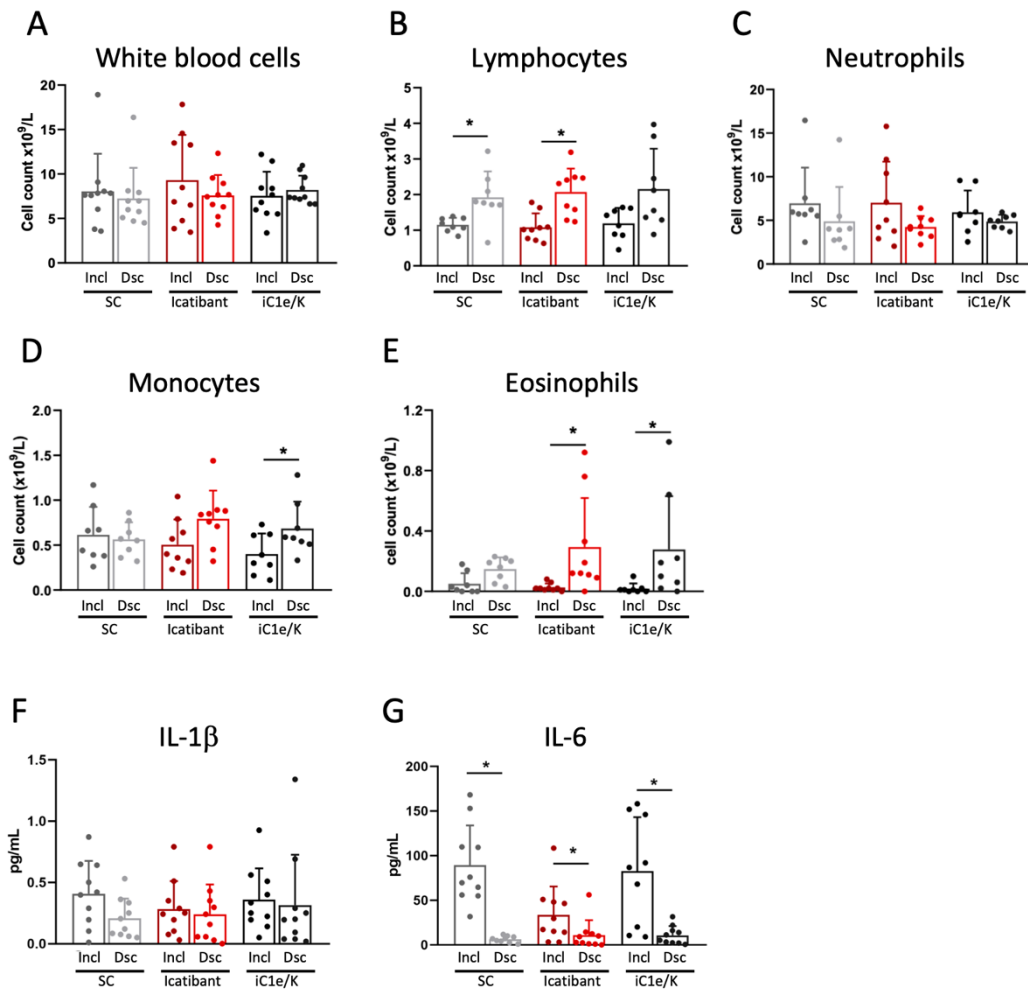


Figure 3. Blood immune cell and cytokine outcomes. White blood cells (A), lymphocytes (B), neutrophils (C), monocytes (D) and eosinophils (E) were determined by automated method in blood samples collected at inclusion and discharge. Interleukin-1 beta (F) and interleukin-6 were determined using ELISA kits in serum samples collected at inclusion and discharge. Dsc, discharge; iC1e/K, inhibitor of C1 esterase/kallikrein; IL-1b, interleukin-1 beta; IL-6, interleukin-6; Incl, inclusion; SC, standard care. *p<0.05.

Discussion

In this proof-of-concept, randomized clinical trial, we could find neither a reduction of mortality nor a reduction of time to clinical improvement in a small cohort of patients with severe COVID-19 treated with pharmacological inhibitors of the kinin-kallikrein system. Nevertheless, there were significant reductions of lung CT scores, which could suggest a positive impact of pharmacological intervention on lung recovery, and increases in blood eosinophils, which is regarded as an indicator of disease recovery²⁴. In addition, interventions promoted no increases in the incidence of adverse effects, suggesting the drugs are safe for use in patients with severe COVID-19.

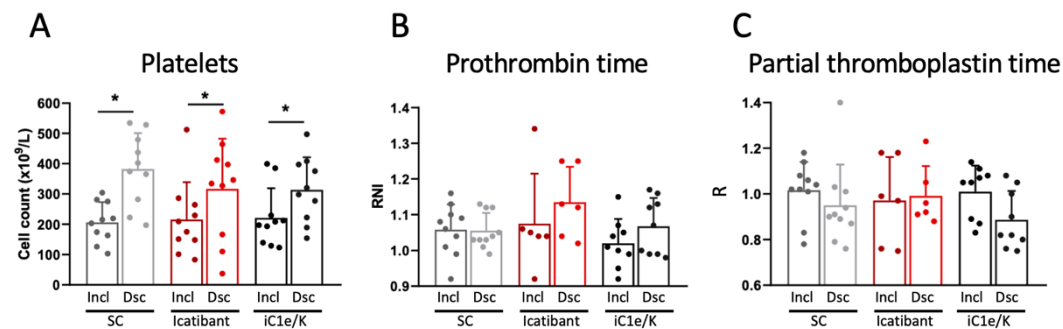


Figure 4. Coagulation-related parameters. Blood platelet counts (A), prothrombin time (B) and partial thromboplastin time (C) were determined in blood samples collected at inclusion and discharge. Dsc, discharge; iC1e/K, inhibitor of C1 esterase/kallikrein; Incl, inclusion; SC, standard care. * $p < 0.05$.

As for other emerging viral diseases, development of vaccine and effective antiviral agents are expected to provide maximum advances in prevention and therapeutics²⁵. However, even in the face of the current global efforts to develop such strategies, years may pass before successful therapies are available for worldwide use^{26,27}. Thus, drug repurposing has emerged as a potentially useful strategy to gain time and promote some advance in the battle against SARS-CoV-2²⁸; in this scenario, existing antiviral drugs are undisputedly the natural candidates, and a number have been tested so far²⁹. Unfortunately, clinical trials with lopinavir-ritonavir and remdesivir resulted in no change in mortality or severity of disease^{11,12}, whereas the combination of interferon beta-1b, lopinavir-ritonavir and ribavirin resulted only in shorter median time to negative nasopharyngeal swab, suggesting viral shedding could be abbreviated³⁰.

As proposed elsewhere, drugs that act in distinct stages of the SARS-CoV-2 cell entrance and replication cycle could promote beneficial outcomes in the treatment of COVID-19²⁹. Due to its action as a SARS-CoV-2 cell entry receptor, ACE2 has emerged as a primary candidate for pharmacological approaches aimed at reducing viral entrance and mitigating disease severity^{31,32}. It has been suggested that, in addition to mediating viral entrance, ACE2-SARS-CoV-2 physical interaction could modify ACE2 catalytic activity, impacting on the regulation of three independent (but rather integrated) systems—bradykinin, angiotensin and coagulation^{21,33-35}. This could explain, at least in part, the development of the most lethal triad in COVID-19 (i.e., severe lung inflammation, acute cardiovascular failure and thromboembolic events).

Here, we hypothesized that pharmacological inhibition of the kinin-kallikrein system could alleviate the acute inflammatory response during the initial steps of SARS-CoV-2

infection and thus provide a therapeutic advance against COVID-19. We used two drugs currently approved for the treatment of hereditary angioedema, icatibant and iC1e/K, which were compared against standard care. We chose standard care alone as the comparator because, when the trial began, there was no evidence for a pharmacological approach that could impact positively on COVID-19. Currently, there is at least one study showing a positive impact for dexamethasone reducing mortality in severe COVID-19⁸, and further studies with inhibitors of the kinin-kallikrein system should consider adding dexamethasone to all groups. Placebo and blinding were not adopted because of the urgent nature of this medical condition, and this was approved by the ethical committee.

Icatibant is an inhibitor of bradykinin receptor 2, which is approved for the treatment of bradykinin-induced edema in hereditary angioedema, leading to rapid relief of symptoms³⁶. Side effects are rare and usually restricted to inflammatory signals in the site of injection^{37,38}. In hereditary angioedema, a single 30 mg dose of icatibant is capable of reducing symptoms in minute to a few hours³⁸. As icatibant has a short half-life (6 h)³⁹, we used a 30 mg/dose every 8 h for four days, which proved safe, as no increased adverse effects were reported.

iC1e/K is a human-derived protein with an excellent record of beneficial actions in hereditary angioedema^{40,41}. It is well tolerated by most patients, and adverse effects are usually restricted to rash and headache⁴². Due to its long half-life (56 h), we used 20 IU/kg at inclusion and on day four. There was no increased appearance of adverse effects in our cohort. It is worthwhile to mention that iC1e/K is present in human plasma, and ongoing clinical studies employing convalescent plasma to treat COVID-19⁴³ may benefit not only from the presence of immunoneutralizing antibodies against SARS-CoV-2 but also from its endogenous capacity to inhibit the kinin-kallikrein system, as shown for hereditary angioedema^{44,45}.

The decision to pharmacologically intervene during the first four days after patient enrolment was based on the fact that bradykinin is a fast-acting, acute-phase inflammatory substance that has a very short half-life and is promptly produced upon exposure to the triggering agent^{46,47}. We reasoned that, if viral interaction could modify ACE2 catalytic activity, bradykinin would accumulate during the initial steps of COVID-19 progression and pharmacological inhibition would produce clinical outcomes only if used early after infection. Unfortunately, as in all other clinical reports on COVID-19^{2,8,11,12}, in this study, the mean time since symptom appearance to hospital admittance was eight days, which could be somewhat late for intervention upon the bradykinin

system. This could be one of the reasons explaining why we did not find a reduction in time to clinical improvement in our patients.

Even though interventions were incapable of modifying mortality and time to clinical improvement, the reduction of lung CT scores and increased blood eosinophils could indicate a beneficial impact of intervention on patient recovery. As recently reported, the mean time for poorest lung CT scores, which is defined as peak-stage or stage-3, is 9–13 days since beginning of symptoms⁴⁸. Thus, most patients included in our study were about to enter the time window when stage-3 develops. It is currently unknown if severe COVID-19 acute lung lesions could promote long-term structural abnormalities and, if so, how could it impact on respiratory function. In at least two studies, lung CT abnormalities were shown to persist after four weeks since the beginning of disease^{48,49}. Thus, it is intuitive to believe that improved lung CT scores in patients treated with kinin-kallikrein inhibitors indicate lung recovery that could impact on long-term respiratory function. If future studies show late respiratory loss in patients with COVID-19, it would be interesting to re-evaluate this cohort using functional respiratory tests.

The increased blood eosinophils provide yet another indication of improved recovery in the groups undergoing pharmacological intervention. In fatal cases of COVID-19, blood eosinophil counts were consistently reduced at hospital admittance⁵⁰, whereas autopsies revealed an absence of eosinophils in lung specimens⁵¹. In addition, a low blood eosinophil count was identified as a risk factor (odds ratio = 10.2) for severe progression of COVID-19⁵², whereas the progressive increase of blood eosinophils was associated with disease recovery²⁴. Recent studies have challenged the classic concept of eosinophil roles being restricted to helminthic parasitosis and allergic diseases⁵³. Eosinophils have been shown to act centrally in immunomodulatory networks that warrant homeostasis during inflammatory responses⁵⁴ and also to promote antiviral immunity in influenza A virus infection⁵⁵. This has been proposed as the mechanism underlying the protective impact of asthma on influenza morbidity⁵⁵, which could also be applied to COVID-19 (doi: 10.22541/au.159118771.11841404).

The main weaknesses of this study are the small number of patients, and the fact that pharmacological intervention was instituted approximately eight days after the beginning of symptoms. An important reason for restricting the cohort to 30 patients was that, during enrollment, it was demonstrated that dexamethasone could reduce mortality in patients with severe COVID-19⁸. Thus, we consider that the continuity of ongoing protocols or beginning of new protocols should ethically include dexamethasone in all arms. Conversely, regarding the fact that the mean time for patient inclusion was eight days, which could be a late stage for interventions targeting

bradykinin, there is little that could be done, because of the natural course of the disease, which prompts patients to seek medical attention at this stage. Even if patients were advised to seek medical attention at an earlier stage, most of them would not progress to severe COVID-19. Therefore, only the development of methods that predict severe progression of disease at an early stage could reduce time to inclusion.

In conclusion, this is the first clinical trial reporting the impact of pharmacological inhibition of the kinin-kallikrein system in patients with severe COVID-19. The lack of findings regarding mortality and time to clinical improvement could be attributed to small sample size and beginning the intervention at a late stage. Nevertheless, improvement in CT lung scores and increased blood eosinophils suggest that intervention had a beneficial impact on patient recovery and should be considered in future trials.

Methods

Study design and patients. This was a phase II, single center, three-arm parallel group, open-label randomized clinical trial (RCT) conducted at the Clinics Hospital, University of Campinas. Enrollment occurred from April 22, 2020 to June 14, 2020. There was a 1:1:1 allocation ratio to icanitab plus standard care vs. iC1e/K plus standard care vs. standard care alone. The study followed the principles of the Declaration of Helsinki. Inclusion criteria were age at least 18 years at the time of signing the consent form, symptom duration of 12 days or less upon recruitment, SARS-CoV-2 diagnosis by RT-PCR method according to the Berlin-Charité protocol⁵⁶, diagnosis of COVID-19 typical pneumonia confirmed by CT of the chest and scored by two lung expert radiologists, $SpO_2 \leq 94\%$ in ambient air or $PaO_2/FiO_2 \leq 300$ mmHg, willingness of study participants to accept randomization to any assigned treatment arm, patient or responsible family member signing the consent form, and agreement that patient should not enroll in any other experimental study prior to completion of the 28-day follow-up. Exclusion criteria were pregnant or breastfeeding women (a beta-HCG level was determined in all eligible women of childbearing age); severe renal impairment (estimated glomerular filtration rate ≤ 30 ml/min/1.73 m²), patients receiving continuous renal replacement therapy (hemodialysis or peritoneal dialysis), or previous renal transplant; severe liver disease (AST or ALT 5X above the reference value); HIV infection (HIV was tested for in all eligible patients); or patients with any other immunodeficiencies, previous diagnosis of cancer, previous diagnosis of hereditary angioedema, previous ischemic myocardial disease, previous thromboembolic disease,

current use of immunosuppressive drug therapy, or use of any experimental treatment for SARS-CoV-2 infection within 30 days prior to screening. This trial has been registered at the Brazilian Clinical Trials Registry (<http://www.ensaiosclinicos.gov.br/rg/?q=U1111-1250-1843>); Universal Trial Number (UTN): U1111-1250-1843 and approved by the local Ethical Review Committee of the Clinics Hospital of the University of Campinas (protocol CAEE: 30227920.9.0000.5404). Written consent to participate in this study has been obtained from all patients or substitute decisionmakers (for patients lacking decision-making capacity).

Randomization. The randomization list was generated by an independent researcher with no involvement in the study. A software-based approach (www.sealedenvelope.com) was used to generate the allocation sequence. Sealed and sequentially numbered opaque envelopes, containing the allocation arms, were prepared in advance according to the randomization list. The project coordinator and investigators in each unit of the hospital enrolled the participants. Once the eligibility criteria were met, the envelope was opened, and the therapy was prescribed according to the arm specified in the envelope.

Blinding. This was an open-label trial; thus, neither the trial participant nor the care providers were blinded. However, data entry staff and data manager were blinded. Data was sent to the data entry staff by code, and the study arm was never specified. Data entry staff and data managers were not part of the hospital staff and were never given access to any clinical data belonging to the patients. The Data Safety Monitoring Board (DSMC) was unblinded.

Procedures. Group A, Firazyr® (icatibant acetate 30 mg [3.0 ml of 10 mg/ml solution]) subcutaneous injections in the abdominal area were administered at intervals of 8 h for 4 days *plus* standard care. Group B, Berinert® (human plasma-derived C1 esterase/kallikrein Inhibitor) administered at a dose of 20 IU/kg body weight on day 1 shortly after recruitment and on day 4 (each vial contains 500 IU of C1 esterase/kallikrein inhibitor as a lyophilized product for reconstitution with 10 ml of sterile water for injection) *plus* standard care. Group C, standard care. Upon medical decision, patients received antibiotics, antithrombotic therapy, oxygen support, non-invasive and invasive mechanical ventilation, vasopressor drugs, stress doses of corticosteroids and renal support therapy. The criteria for eventual discontinuation of the intervention were withdrawal of consent, grade 4 adverse reaction or allergy to the drug, and protocol violation.

Clinical, radiological and laboratory monitoring. Diagnosis of SARS-CoV-2 infection was performed by RT-PCR in nasopharyngeal swab samples. Once patients were included in the study, clinical data was obtained continuously and uploaded once a day on the data management system. CT scans were performed at admittance and at days 14 and 28, or otherwise at hospital discharge. CT scan scoring was performed by two experienced radiologists and followed guidelines published elsewhere ⁴⁸. Blood samples were collected on admittance and at days 7, 14, 21 and 28, or otherwise at hospital discharge. Additional clinical, radiological, and laboratory tests were performed at any time at the discretion of the medical staff. Hematological and biochemical parameters were determined in blood samples using automated methods. Cytokines were determined using ELISA kits, according to the recommendations provided by the manufacturers (Interleukin-1beta, RD Systems – catalog number HSLB00C; interleukin-6, RD Systems – catalog number D6050).

Data management. Each patient allocated in the study was given a unique code generated by the independent researcher who created the randomization list. The codes were stored in a password protected file that was not accessible to the data management team or other investigators. All data (outcomes, questionnaires, clinical data, CT, and laboratory measurements) were retrieved from the online official medical records of the hospital and were immediately uploaded into REDCap (<https://redcap.vanderbilt.edu>). Data were retrieved daily by one investigator using a datasheet available online and in print form. Collected data were sent by email to two researchers on the data management team in order to establish double data entry.

Outcomes. The primary outcome was the time to clinical improvement (TTCI) as defined by the Cap-China Network ⁵⁷, which was employed in the LOTUS China trial ¹¹ and recommended by the World Health Organization. TTCI refers to the time from randomization to an improvement of two points on the seven-category ordinal scale as follows ⁵⁸ (or discharge alive from the hospital): 1, not hospitalized with resumption of normal activities; 2, not hospitalized, but unable to resume normal activities; 3, hospitalized, not requiring supplemental oxygen; 4, hospitalized, requiring supplemental oxygen; 5, hospitalized, requiring nasal high-flow oxygen therapy, non-invasive mechanical ventilation; 6, hospitalized, requiring ECMO, invasive mechanical ventilation, or both; or 7, death. The secondary outcomes were as follows: percentage of patients on seven-category scale on days 7, 14 and 21; time on mechanical ventilation; time of hospitalization of survivors; time on oxygen support; time from randomization to hospital discharge; time from randomization to death; and frequency of severe adverse events as defined by National Cancer Institute Common

Terminology Criteria for Adverse Events (CTCAE), version 5.0. Quick sepsis-related organ failure score (qSOFA) was determined as defined elsewhere (qsofa.org).

Statistical analysis. All statistical analyses were performed using SPSS version 22.0 and GraphPad Prism 8.0. Values are presented as means and standard deviation in tables and as means and standard error of the mean in figures. To check the normal distribution of variables, the Kolmogorov-Smirnov test was used. When the variable did not present a normal distribution, the equivalent non-parametric test was used. For comparisons between the three groups at baseline, the unidirectional analysis of variance (ANOVA) was used. For non-parametric variables, the Kruskal-Wallis test was employed. Also, a paired Student's *t* test (or Wilcoxon test) was used to compare variables at admission and at discharge for all three groups. To test for differences in frequencies between groups, we used the chi-square test. A p-value of less than 0.05 was considered statistically significant.

Role of the funding source. The study was fully sponsored by public grants provided by the University of Campinas and Sao Paulo Research Foundation. The sponsors had no involvement with study design, data collection, data analysis, interpretation of results and manuscript preparation.

Author contribution. LAV is the supervisor and lead contact. LAV conceived the study, raised funds, organized the protocol and wrote the paper. EM coordinated the execution team and provided thoughtful insights for the design of the study. MLM was the co-supervisor of the study. ACP, RGU, LCR, AFB, TAN and MVA screened, enrolled and followed-up patients. BB, RLC and ASF performed laboratory analysis. MM-P and EPA organized data. ALEF, TMS, PT and MLM provided clinical supervision support for the preparation and execution of the trial. RPS and SSD designed and performed radiological analysis. MM-P performed statistical analysis. All authors read and approved the final manuscript.

Declaration of interests. Authors have no conflict of interest to declare.

Data sharing. All data obtained in this study can be made available to qualified researchers upon request, provided that data protection and ethical standards are in compliance with the principles of the Declaration of Helsinki.

Grant providers. Sao Paulo Research Foundation grants #2013/07607-8 and #2020/04522-5; University of Campinas grant #2298/20.

References

1. Richardson, S., *et al.* Presenting Characteristics, Comorbidities, and Outcomes Among 5700 Patients Hospitalized With COVID-19 in the New York City Area. *JAMA* (2020).
2. Zhu, N., *et al.* A Novel Coronavirus from Patients with Pneumonia in China, 2019. *N Engl J Med* **382**, 727-733 (2020).
3. Chen, N., *et al.* Epidemiological and clinical characteristics of 99 cases of 2019 novel coronavirus pneumonia in Wuhan, China: a descriptive study. *Lancet* **395**, 507-513 (2020).
4. Fu, F., *et al.* Chest computed tomography findings of coronavirus disease 2019 (COVID-19) pneumonia. *Eur Radiol* (2020).
5. Salehi, S., Abedi, A., Balakrishnan, S. & Gholamrezanezhad, A. Coronavirus disease 2019 (COVID-19) imaging reporting and data system (COVID-RADS) and common lexicon: a proposal based on the imaging data of 37 studies. *Eur Radiol* (2020).
6. Ackermann, M., *et al.* Pulmonary Vascular Endothelialitis, Thrombosis, and Angiogenesis in Covid-19. *N Engl J Med* (2020).
7. Acharya, D., Liu, G. & Gack, M.U. Dysregulation of type I interferon responses in COVID-19. *Nat Rev Immunol* (2020).
8. Group, R.C., *et al.* Dexamethasone in Hospitalized Patients with Covid-19 - Preliminary Report. *N Engl J Med* (2020).
9. Russell, C.D., Millar, J.E. & Baillie, J.K. Clinical evidence does not support corticosteroid treatment for 2019-nCoV lung injury. *Lancet* **395**, 473-475 (2020).
10. Borba, M.G.S., *et al.* Effect of High vs Low Doses of Chloroquine Diphosphate as Adjunctive Therapy for Patients Hospitalized With Severe Acute Respiratory Syndrome Coronavirus 2 (SARS-CoV-2) Infection: A Randomized Clinical Trial. *JAMA Netw Open* **3**, e208857 (2020).
11. Cao, B., *et al.* A Trial of Lopinavir-Ritonavir in Adults Hospitalized with Severe Covid-19. *N Engl J Med* **382**, 1787-1799 (2020).
12. Wang, Y., *et al.* Remdesivir in adults with severe COVID-19: a randomised, double-blind, placebo-controlled, multicentre trial. *Lancet* **395**, 1569-1578 (2020).
13. Wu, Z. & McGoogan, J.M. Characteristics of and Important Lessons From the Coronavirus Disease 2019 (COVID-19) Outbreak in China: Summary of a Report of 72314 Cases From the Chinese Center for Disease Control and Prevention. *JAMA* (2020).
14. Yan, R., *et al.* Structural basis for the recognition of SARS-CoV-2 by full-length human ACE2. *Science* **367**, 1444-1448 (2020).
15. Ziegler, C.G.K., *et al.* SARS-CoV-2 Receptor ACE2 Is an Interferon-Stimulated Gene in Human Airway Epithelial Cells and Is Detected in Specific Cell Subsets across Tissues. *Cell* **181**, 1016-1035 e1019 (2020).
16. Blanco-Melo, D., *et al.* Imbalanced Host Response to SARS-CoV-2 Drives Development of COVID-19. *Cell* **181**, 1036-1045 e1039 (2020).
17. Hadjadj, J., *et al.* Impaired type I interferon activity and inflammatory responses in severe COVID-19 patients. *Science* (2020).
18. Sodhi, C.P., *et al.* Attenuation of pulmonary ACE2 activity impairs inactivation of des-Arg(9) bradykinin/BKB1R axis and facilitates LPS-induced neutrophil infiltration. *Am J Physiol Lung Cell Mol Physiol* **314**, L17-L31 (2018).
19. Shang, J., *et al.* Cell entry mechanisms of SARS-CoV-2. *Proc Natl Acad Sci U S A* (2020).
20. Sturrock, B.R., Milne, K. & Chevassut, T.J. The renin-angiotensin system - a therapeutic target in COVID-19? *Clin Med (Lond)* (2020).

21. van de Veerdonk, F.L., *et al.* Kallikrein-kinin blockade in patients with COVID-19 to prevent acute respiratory distress syndrome. *Elife* **9**(2020).
22. Connors, J.M. & Levy, J.H. COVID-19 and its implications for thrombosis and anticoagulation. *Blood* (2020).
23. Kuba, K., *et al.* A crucial role of angiotensin converting enzyme 2 (ACE2) in SARS coronavirus-induced lung injury. *Nat Med* **11**, 875-879 (2005).
24. Liu, F., *et al.* Patients of COVID-19 may benefit from sustained Lopinavir-combined regimen and the increase of Eosinophil may predict the outcome of COVID-19 progression. *Int J Infect Dis* **95**, 183-191 (2020).
25. Cohen, M.S. & Corey, L. Combination prevention for COVID-19. *Science* **368**, 551 (2020).
26. Jiang, S. Don't rush to deploy COVID-19 vaccines and drugs without sufficient safety guarantees. *Nature* **579**, 321 (2020).
27. Roberts, L. Pandemic brings mass vaccinations to a halt. *Science* **368**, 116-117 (2020).
28. Gordon, D.E., *et al.* A SARS-CoV-2 protein interaction map reveals targets for drug repurposing. *Nature* **583**, 459-468 (2020).
29. Guy, R.K., DiPaola, R.S., Romanelli, F. & Dutch, R.E. Rapid repurposing of drugs for COVID-19. *Science* **368**, 829-830 (2020).
30. Hung, I.F., *et al.* Triple combination of interferon beta-1b, lopinavir-ritonavir, and ribavirin in the treatment of patients admitted to hospital with COVID-19: an open-label, randomised, phase 2 trial. *Lancet* **395**, 1695-1704 (2020).
31. Shi, R., *et al.* A human neutralizing antibody targets the receptor-binding site of SARS-CoV-2. *Nature* (2020).
32. Monteil, V., *et al.* Inhibition of SARS-CoV-2 Infections in Engineered Human Tissues Using Clinical-Grade Soluble Human ACE2. *Cell* **181**, 905-913 e907 (2020).
33. Franco, R., *et al.* SARS-CoV-2 as a Factor to Disbalance the Renin-Angiotensin System: A Suspect in the Case of Exacerbated IL-6 Production. *J Immunol* (2020).
34. Sarzani, R., Giulietti, F., Di Pentima, C., Giordano, P. & Spannella, F. Disequilibrium between the Classic Renin-Angiotensin System and Its Opposing Arm in Sars-Cov-2 Related Lung Injury. *Am J Physiol Lung Cell Mol Physiol* (2020).
35. Wang, J., *et al.* Dysfunctional Coagulation in COVID-19: From Cell to Bedside. *Adv Ther* **37**, 3033-3039 (2020).
36. Bork, K., *et al.* Treatment of acute edema attacks in hereditary angioedema with a bradykinin receptor-2 antagonist (Icatibant). *J Allergy Clin Immunol* **119**, 1497-1503 (2007).
37. Lumry, W.R., *et al.* Randomized placebo-controlled trial of the bradykinin B(2) receptor antagonist icatibant for the treatment of acute attacks of hereditary angioedema: the FAST-3 trial. *Ann Allergy Asthma Immunol* **107**, 529-537 (2011).
38. Boccon-Gibod, I. & Bouillet, L. Safety and efficacy of icatibant self-administration for acute hereditary angioedema. *Clin Exp Immunol* **168**, 303-307 (2012).
39. Leach, J.K., Spencer, K., Mascelli, M. & McCauley, T.G. Pharmacokinetics of single and repeat doses of icatibant. *Clin Pharmacol Drug Dev* **4**, 105-111 (2015).
40. Zuraw, B.L., *et al.* Phase II study results of a replacement therapy for hereditary angioedema with subcutaneous C1-inhibitor concentrate. *Allergy* **70**, 1319-1328 (2015).
41. Martinez-Saguer, I., *et al.* Pharmacokinetics of plasma-derived C1-esterase inhibitor after subcutaneous versus intravenous administration in subjects with mild or moderate hereditary angioedema: the PASSION study. *Transfusion* **54**, 1552-1561 (2014).
42. Cocchio, C. & Marzella, N. Cinryze, a human plasma-derived c1 esterase inhibitor for prophylaxis of hereditary angioedema. *P T* **34**, 293-328 (2009).

43. Chen, L., Xiong, J., Bao, L. & Shi, Y. Convalescent plasma as a potential therapy for COVID-19. *Lancet Infect Dis* **20**, 398-400 (2020).
44. Pickering, R.J., Good, R.A., Kelly, J.R. & Gewurz, H. Replacement therapy in hereditary angioedema. Successful treatment of two patients with fresh frozen plasma. *Lancet* **1**, 326-330 (1969).
45. Fine, S.R., Fogarty, M. & Linz, A. Letter: Fresh frozen plasma for prophylaxis in hereditary angioedema. *J Allergy Clin Immunol* **57**, 624-625 (1976).
46. Nussberger, J., *et al.* Plasma bradykinin in angio-oedema. *Lancet* **351**, 1693-1697 (1998).
47. Nussberger, J., Cugno, M. & Cicardi, M. Bradykinin-mediated angioedema. *N Engl J Med* **347**, 621-622 (2002).
48. Pan, F., *et al.* Time Course of Lung Changes at Chest CT during Recovery from Coronavirus Disease 2019 (COVID-19). *Radiology* **295**, 715-721 (2020).
49. Zhou, S., Zhu, T., Wang, Y. & Xia, L. Imaging features and evolution on CT in 100 COVID-19 pneumonia patients in Wuhan, China. *Eur Radiol* (2020).
50. Du, Y., *et al.* Clinical Features of 85 Fatal Cases of COVID-19 from Wuhan. A Retrospective Observational Study. *Am J Respir Crit Care Med* **201**, 1372-1379 (2020).
51. Barton, L.M., Duval, E.J., Stroberg, E., Ghosh, S. & Mukhopadhyay, S. COVID-19 Autopsies, Oklahoma, USA. *Am J Clin Pathol* **153**, 725-733 (2020).
52. Zhao, L., Zhang, Y.P., Yang, X. & Liu, X. Eosinopenia is associated with greater severity in patients with coronavirus disease 2019. *Allergy* (2020).
53. Chusid, M.J. Eosinophils: Friends or Foes? *J Allergy Clin Immunol Pract* **6**, 1439-1444 (2018).
54. Lee, J.J., Jacobsen, E.A., McGarry, M.P., Schleimer, R.P. & Lee, N.A. Eosinophils in health and disease: the LIAR hypothesis. *Clin Exp Allergy* **40**, 563-575 (2010).
55. Samarasinghe, A.E., *et al.* Eosinophils Promote Antiviral Immunity in Mice Infected with Influenza A Virus. *J Immunol* **198**, 3214-3226 (2017).
56. Corman, V.M., *et al.* Detection of 2019 novel coronavirus (2019-nCoV) by real-time RT-PCR. *Euro Surveill* **25**(2020).
57. Wang, Y., *et al.* Comparative Effectiveness of Combined Favipiravir and Oseltamivir Therapy Versus Oseltamivir Monotherapy in Critically Ill Patients With Influenza Virus Infection. *J Infect Dis* **221**, 1688-1698 (2020).
58. Cao, B., *et al.* A Trial of Lopinavir-Ritonavir in Adults Hospitalized with Severe Covid-19. *N Engl J Med* (2020).

Supplementary data

Supplementary Table 1. Patients screened and excluded from study.

Excluded Patients	Age	Gender	Exclusion Criteria
E1	50-60	M	Symptoms >12 days
E2	60-70	F	Symptoms >12 days
E3	50-60	M	Symptoms >12 days
E4	40-50	M	Symptoms >12 days
E5	70-80	F	Symptoms >12 days
E6	50-60	M	Symptoms >12 days
E7	70-80	F	Symptoms >12 days
E8	40-50	M	Symptoms >12 days
E9	60-70	F	Symptoms >12 days
E10	50-60	M	Symptoms >12 days
E11	60-70	M	Symptoms >12 days
E12	70-80	F	Symptoms >12 days
E13	50-60	F	Symptoms >12 days
E14	40-50	M	Sat >94%
E15	40-50	M	Sat >94%
E16	40-50	M	Sat >94%
E17	20-30	M	Sat >94%
E18	50-60	M	Sat >94%
E19	30-40	F	Sat >94%
E20	60-70	F	Sat >94%
E21	30-40	M	Sat >94%
E22	30-40	M	Kidney transplant
E23	50-60	M	Kidney transplant
E24	50-60	M	Kidney transplant
E25	30-40	F	Kidney transplant
E26	18-20	F	Kidney transplant
E27	40-50	F	Kidney transplant
E28	90-100	M	DNPC
E29	80-90	M	DNPC
E30	90-100	M	DNPC
E31	80-90	M	DNPC
E32	80-90	F	DNPC
E33	50-60	M	DNPC
E34	20-30	M	DNPC
E35	60-70	M	DNPC
E36	50-60	M	DNPC
E37	60-70	M	DNPC
E38	60-70	M	CKD
E39	50-60	F	CKD
E40	60-70	F	CKD
E41	50-60	M	CKD
E42	50-60	F	HIV
E43	20-30	M	HIV
E44	50-60	F	HIV
E45	60-70	M	AMI
E46	70-80	M	AMI
E47	50-60	F	AMI
E48	50-60	F	AMI
E49	50-60	M	Hydroxychloroquine use
E50	50-60	F	Hydroxychloroquine use
E51	40-50	M	Hydroxychloroquine use
E52	20-30	M	Systemic sclerosis
E53	60-70	F	Systemic sclerosis
E54	60-70	M	Stroke
E55	80-90	M	Stroke
E56	40-50	M	Thromboembolic event
E57	60-70	M	Pulmonary thromboembolism
E58	50-60	M	Hepatic cirrhosis

E59	40-50	M	Liver transplant
E60	40-50	F	Autoimmune hepatitis
E61	50-60	M	AML
E62	40-50	M	ALL
E63	60-70	M	Miastenia gravis
E64	50-60	M	FSGS
E65	20-30	M	Polytrauma
E66	60-70	F	Expansive brain injury
E67	70-80	F	ND
E68	30-40	F	ND
E69	60-70	F	ND
E70	20-30	M	ND
E71	70-80	F	ND
E72	40-50	M	ND
E73	50-60	F	ND
E74	80-90	M	ND
E75	60-70	F	ND
E76	50-60	M	ND
E77	50-60	F	ND
E78	50-60	F	ND
E79	60-70	F	ND
E80	30-40	M	ND
E81	60-70	F	ND
E82	60-70	F	ND
E83	50-60	F	ND
E84	30-40	F	ND
E85	18-20	F	ND
E86	70-80	F	ND
E87	30-40	M	ND
E88	50-60	F	ND
E89	20-30	M	ND
E90	70-80	M	ND
E91	60-70	M	ND
E92	90-100	F	ND
E93	50-60	F	ND
E94	50-60	F	ND
E95	40-50	F	ND
E96	20-30	M	ND
E97	50-60	M	ND
E98	60-70	M	ND
E99	40-50	M	ND
E100	80-90	M	ND
E101	20-30	M	ND
E102	50-60	M	ND
E103	50-60	M	ND
E104	90-100	M	ND
E105	70-80	F	ND
E106	20-30	F	ND
E107	60-70	M	ND
E108	50-60	M	ND
E109	60-70	F	ND
E110	30-40	M	ND
E111	70-80	F	ND
E112	70-80	M	ND
E113	80-90	M	ND
E114	70-80	M	ND
E115	60-70	M	ND
E116	60-70	M	ND
E117	30-40	F	ND
E118	80-90	F	ND
E119	50-60	M	ND
E120	30-40	F	ND
E121	40-50	F	ND
E122	60-70	M	ND
E123	30-40	M	ND
E124	70-80	M	ND
E125	60-70	F	ND

E126	60-70	M	ND
E127	60-70	F	ND
E128	50-60	M	ND
E129	20-30	F	ND
E130	70-80	M	ND
E131	70-80	F	ND
E132	20-30	M	ND
E133	30-40	M	ND
E134	50-60	F	ND
E135	70-80	F	ND
E136	30-40	M	ND
E137	60-70	M	ND
E138	20-30	M	ND
E139	70-80	M	ND
E140	40-50	M	ND
E141	40-50	M	ND
E142	50-60	M	ND
E143	80-90	M	ND
E144	60-70	M	ND
E145	80-90	M	ND
E146	30-40	F	ND
E147	60-70	M	ND
E148	70-80	M	ND
E149	60-70	M	ND
E150	50-60	F	ND
E151	40-50	F	ND
E152	40-50	M	ND
E153	60-70	M	ND
E154	50-60	M	ND
E155	70-80	M	ND
E156	70-80	F	ND
E157	60-70	M	ND
E158	50-60	M	ND
E159	50-60	F	ND
E160	50-60	M	ND
E161	60-70	M	ND
E162	50-60	M	ND
E163	50-60	M	ND
E164	60-70	M	ND
E165	60-70	M	ND
E166	60-70	M	ND
E167	20-30	M	ND
E168	30-40	F	ND
E169	80-90	F	ND
E170	60-70	M	ND
E171	70-80	M	ND
E172	60-70	M	ND
E173	60-70	M	ND
E174	70-80	F	ND
E175	50-60	M	ND
E176	80-90	F	ND
E177	70-80	F	ND
E178	80-90	M	ND
E179	50-60	M	ND
E180	40-50	F	ND
E181	50-60	F	ND
E182	50-60	M	ND
E183	40-50	F	ND
E184	40-50	M	ND
E185	50-60	M	ND
E186	50-60	M	ND
E187	80-90	F	ND
E188	80-90	F	ND
E189	60-70	M	ND
E190	70-80	M	ND
E191	70-80	M	ND
E192	30-40	F	ND

E193	40-50	M	ND
E194	50-60	F	ND
E195	50-60	M	ND
E196	60-70	M	ND
E197	70-80	M	ND
E198	50-60	F	ND
E199	50-60	F	ND
E200	70-80	F	ND
E201	70-80	F	ND
E202	50-60	F	ND
E203	70-80	M	ND
E204	30-40	M	ND
E205	50-60	M	ND
E206	70-80	F	ND
E207	40-50	M	ND
E208	70-80	F	ND
E209	20-30	M	ND
E210	60-70	F	ND
E211	30-40	F	ND

Abbreviations: ALL, acute lymphoid leukemia; AMI, acute myocardial infarction; AML, acute myeloid leukemia; CKD, chronic kidney disease; DNPC, did not provide consent; FSGS, focal segmental glomerulosclerosis; HIV, diagnosis of HIV infection; ND, no confirmation of diagnosis by PCR.

Supplementary Table 2. Patients included in the study.

Patient Identity	Age	Gender	Inclusion week	Time since beginning of symptoms (days)	Randomization	Arm
P1	50-60	M	17	7	001 YD6	SC
P2	50-60	M	17	8	002 ZE3	Icatibant
P3	70-80	F	18	4	003 510	iC1e/K
P4	30-40	M	18	10	004 SU3	SC
P5	40-50	M	18	8	005 DH1	Icatibant
P6	50-60	M	19	9	006 GK4	Icatibant
P7	40-50	M	19	10	007 OH1	SC
P8	40-50	M	20	6	008 IE5	iC1e/K
P9	30-40	M	20	4	009 ZL0	Icatibant
P10	50-60	M	21	11	010 UW5	Icatibant
P11	60-70	F	21	7	011 YB8	iC1e/K
P12	50-60	M	21	10	012 UU6	iC1e/K
P13	60-70	F	21	7	013 DU2	SC
P14	50-60	M	22	12	014 KL6	SC
P15	40-50	F	22	10	015 GS8	SC
P16	40-50	M	22	10	016 TL8	Icatibant
P17	50-60	F	22	7	017 TT4	SC
P18	40-50	F	22	11	018 DC5	iC1e/K
P19	30-40	F	22	11	019 MI3	SC
P20	60-70	M	22	8	020 VZ9	iC1e/K
P21	40-50	M	22	5	021 QR4	Icatibant
P22	30-40	F	23	3	022 FM6	iC1e/K
P23	40-50	F	23	7	023 WG1	SC
P24	30-40	M	23	10	024 CC2	iC1e/K
P25	40-50	F	24	8	025 VK0	iC1e/K
P26	60-70	M	24	5	026 RL1	SC
P27	70-80	F	24	10	027 ZR9	iC1e/K
P28	60-70	F	24	9	028 LQ8	Icatibant
P29	50-60	F	24	8	029 GG3	Icatibant
P30	50-60	F	24	6	030 QT1	Icatibant

Abbreviations: iC1e/K, inhibitor of C1 esterase/kallikrein; SC, standard care.

Supplementary Table 3. Hematimetric values.

	Standard Care			Icatibant			iC1e/K			Total sample		
	Admission	Discharge	p	Admission	Discharge	p	Admission	Discharge	p	Admission	Discharge	p
White blood cells (x10**3/μL)#	7.78 ± 4.38	7.27 ± 3.49	0.96	7.76 ± 4.98	7.87 ± 2.37	0.88	7.76 ± 2.76	7.79 ± 1.65	0.96	7.76 ± 4.00	7.64 ± 2.53	0.88
Segmented neutrophils (x10**3/μL)#	5.81 ± 4.74	4.74 ± 4.00	0.16	6.60 ± 3.61	4.24 ± 1.24	0.05	5.80 ± 2.18	5.0 ± 0.82	0.85	6.08 ± 3.03	4.66 ± 2.30	0.03
Lymphocytes (x10**3/μL)#	1.15 ± 0.20	1.92 ± 0.73	0.02	1.08 ± 0.39	2.07 ± 0.66	0.01	1.19 ± 0.43	2.16 ± 1.13	0.05	1.14 ± 0.35	2.05 ± 0.83	0.01
Monocytes (x10**3/μL)#	0.61 ± 0.31	0.57 ± 0.19	0.62	0.50 ± 0.28	0.79 ± 0.31	0.07	0.40 ± 0.23	0.69 ± 0.30	0.03	0.51 ± 0.28	0.69 ± 0.28	0.03
Eosinophils (x10**3/μL)#	0.05 ± 0.07	0.15 ± 0.08	0.08	0.02 ± 0.07	0.15 ± 0.08	0.01	0.02 ± 0.03	0.28 ± 0.35	0.02	0.03 ± 0.05	0.24 ± 0.28	0.01

Abbreviation: iC1e/K, inhibitor of C1 esterase/kallikrein; # Non-parametric test

Supplementary Table 4. Blood coagulation parameter values.

	Standard care			Icatibant			iC1e/K			Total sample		
	Admission	Discharge	p	Admission	Discharge	p	Admission	Discharge	p	Admission	Discharge	p
D-dimer	1070.8 ± 745.5	2345.0 ± 3928.9	0.26	834.4 ± 398.2	2429.6 ± 3181.0	0.14	8984.5 ± 24961.8	2753.4 ± 4085.7	0.72	3821.1 ± 14,942	2518.4 ± 3629.0	0.17
Platelets (x10**3/μL)	206.3 ± 66.8	382.0 ± 119.0	<0.01	215.8 ± 123.2	316.5 ± 165.8	0.02	221.4 ± 97.21	313.7 ± 107.64	<0.01	214.5 ± 95.2	337.4 ± 132	<0.01
PT (sec)	12.51 ± 0.86	12.36 ± 0.49	0.57	12.81 ± 1.73	13.40 ± 1.38	0.75	12.06 ± 0.83	12.6 ± 0.97	0.31	12.42 ± 1.11	12.69 ± 0.99	0.55
PT (%)	90.75 ± 12.88	90.87 ± 7.85	0.88	90.18 ± 18.26	80.25 ± 12.38	0.46	97.49 ± 12.57	89.37 ± 12.52	0.21	93.04 ± 14.00	87.78 ± 11.24	0.28
PT (RNI)	1.06 ± 0.07	1.06 ± 0.05	0.92	1.07 ± 0.14	1.14 ± 0.10	0.50	1.02 ± 0.07	1.06 ± 0.08	0.21	1.05 ± 0.09	1.08 ± 0.08	0.27
PTT (sec)	29.23 ± 3.57	27.39 ± 5.15	0.31	27.61 ± 5.08	28.03 ± 3.70	0.74	29.09 ± 3.28	25.56 ± 3.65	0.07	28.75 ± 3.83	26.93 ± 4.27	0.07
PTT - R	1.02 ± 0.12	0.95 ± 0.18	0.31	0.97 ± 0.19	0.99 ± 0.13	0.91	1.01 ± 0.11	0.89 ± 0.13	0.07	1.00 ± 0.13	0.94 ± 0.15	0.07

Abbreviations: iC1e/K, inhibitor of C1 esterase/kallikrein; PT, sss; PTT, .

Supplementary Table 5. Parameters related to renal function.

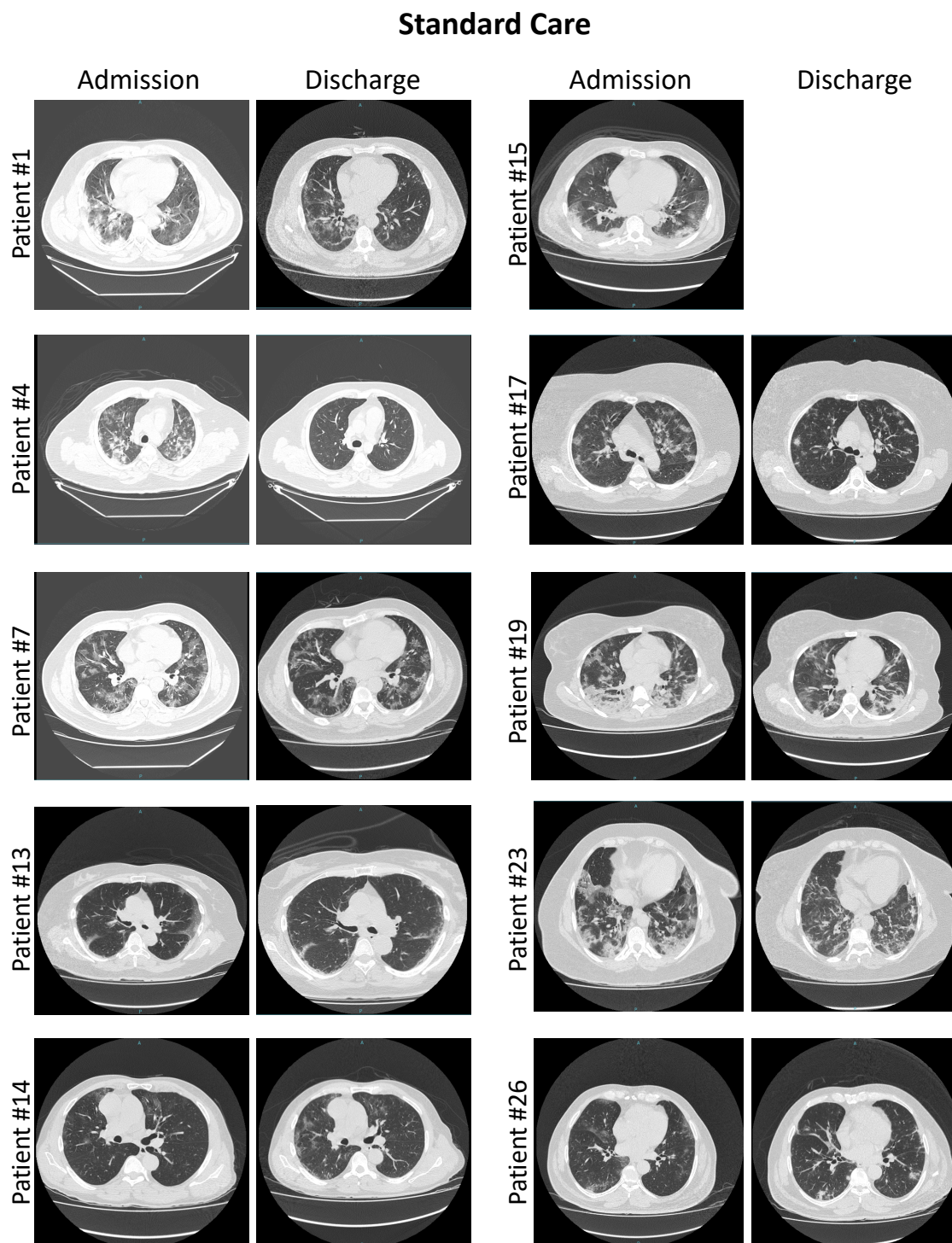
	Standard care			Icatibant			iC1e/K			Total sample		
	Admission	Discharge	p	Admission	Discharge	p	Admission	Discharge	p	Admission	Discharge	p
Creatinine (mg/dL)	0.9 ± 0.3	1.0 ± 1.0	0.44	1.2 ± 1.0	1.6 ± 2.3	0.51	0.9 ± 0.3	0.8 ± 0.4	0.39	1.0 ± 0.6	1.1 ± 1.5	
Urea (mg/dL)	37.6 ± 20.0	38.4 ± 33.5	0.94	40.6 ± 29.1	38.6 ± 25.4	0.62	31.4 ± 10.3	39.1 ± 38.6	0.96	34.5 ± 20.9	38.7 ± 31.7	

Abbreviation: iC1e/K, inhibitor of C1 esterase/kallikrein

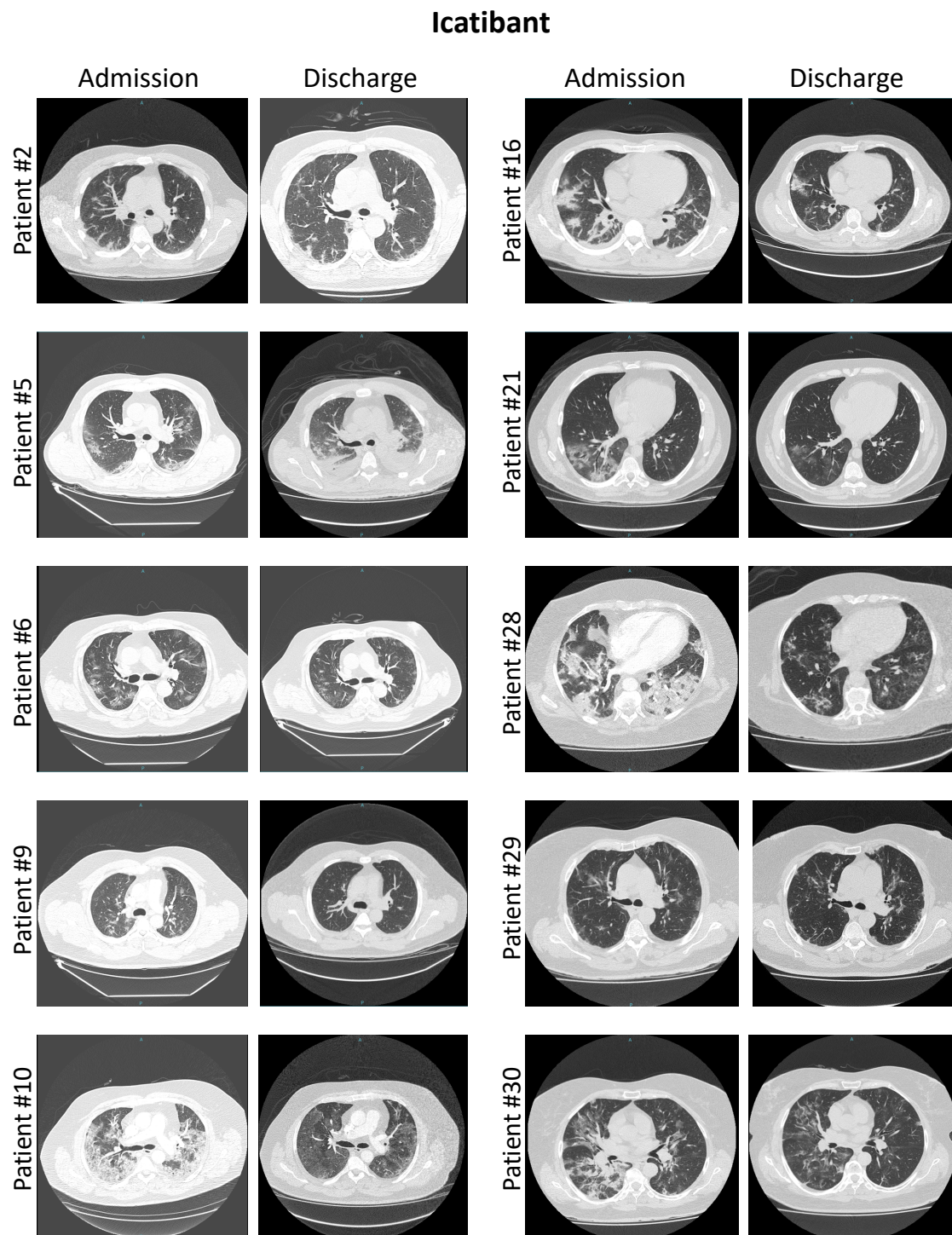
Supplementary Table 6. Adverse effects during intervention.

Adverse Effect	Total	Group 1	Group 2	Group 3	P
Increased ASLT/ALT, n (%)	14 (46.6)	4 (40)	5 (50)	5 (50)	0.88
Diarrhea n (%)	5 (16.6)	1 (10)	2 (20)	2 (20)	--
Nausea, n (%)	3 (10)	1 (10)	0 (0)	2 (20)	--
Vomits, n (%)	3 (10)	1 (10)	1 (10)	1 (10)	--
Hyperbilirubinemia, n (%)	3 (10)	2 (20)	1 (10)	0 (0)	--
Bradycardia, n (%)	2 (6.6)	1 (10)	0 (0)	1 (10)	--
Arrhythmia, n (%)	0 (0)	0 (0)	0 (0)	0 (0)	--

Supplementary Figure 1. Computed tomography lung scans obtained from patients randomized to standard care. Representative images were selected from the most affected region of the lungs. Scans were obtained at admission and discharge. Patient identification refers to randomization sequence as defined in Supplementary Table 2. Patient #15 missing discharge image is due to death.



Supplementary Figure 2. Computed tomography lung scans obtained from patients randomized to icanitbant. Representative images were selected from the most affected region of the lungs. Scans were obtained at admission and discharge. Patient identification refers to randomization sequence as defined in Supplementary Table 2.



Supplementary Figure 3. Computed tomography lung scans obtained from patients randomized to inhibitor of C1 esterase/kallikrein (iC1e/K). Representative images were selected from the most affected region of the lungs. Scans were obtained at admission and discharge. Patient identification refers to randomization sequence as defined in Supplementary Table 2. Patient #3 missing discharge image is due to death.

