

1 **A city-level analysis of air pollution, climate and COVID-19 early spread**
2 **during the Spanish lockdown**

3 Álvaro Briz-Redón^{1,¶}, Carolina Belenguer-Sapiña^{2,¶}, Ángel Serrano-Aroca^{3,*}

4 ¹Statistics Office, City Council of Valencia, c/Arquebisbe Mayoral, 2, 46002 Valencia,
5 Valencia, Spain

6 ² Department of Analytical Chemistry, Faculty of Chemistry, University of Valencia,
7 c/Doctor Moliner 50, 46100 Burjassot, Valencia, Spain

8 ³ Centro de Investigación Traslacional San Alberto Magno, Universidad Católica de Valencia
9 San Vicente Mártir, c/Guillem de Castro 94, 46001 Valencia, Valencia, Spain.

10 [¶]These authors contributed equally

11 * Corresponding author

12

13 **Abstract**

14 The COVID-19 outbreak has escalated into the worse pandemic of the present century. The
15 rapid spread of the new SARS-CoV-2 coronavirus has caused devastating health and
16 economic crises all over the world, with Spain being one of the worst affected countries in
17 terms of confirmed COVID-19 cases and deaths per inhabitant. In this situation, the Spanish
18 Government declared the lockdown of the country with the aim of flattening the epidemic
19 curve. The variations of air pollution in terms of fine particulate matter (PM_{2.5}) levels in 8
20 cities of Spain are analyzed here considering the effect of meteorology during the COVID-
21 19 lockdown period (from March 15th to April 12th 2020). The results of the analysis show
22 that the 4-week Spanish lockdown was not long enough to reduce the PM_{2.5} levels in all the
23 cities considered. These reductions were less than those expected, despite the drastically
24 reduced human activity. Furthermore, no associations between COVID-19 accumulated
25 cases and PM_{2.5} exposure or environmental conditions (temperature, precipitation, wind
26 speed, sunlight hours, maximum pressure) were found during the early spread of the
27 pandemic.

28

29

30

31 **Keywords:** COVID-19; lockdown; air pollution; fine particulate matter; meteorology;
32 environment

33

34

35

36

37 **1. Introduction**

38 The global pandemic of the new SARS-CoV-2 coronavirus causing the COVID-19 disease,
39 first reported in Wuhan, Hubei Province, China, in December 2019 (WHO, 2020a) continues
40 to spread in more than 200 countries (WHO, 2020b). Spain confirmed 314,362 COVID-19
41 cases and 28,503 deaths (ISCIII, n.d.) on 9th August 2020, which is one of the largest
42 mortality rates of this emerging disease. The new SARS-CoV-2 is closely related (88-89%
43 similarity) to two bat-derived severe acute respiratory syndrome-like coronaviruses, bat-SL-
44 CoVZC45, and bat-SL-CoVZXC21 (Lai et al., 2020). In addition to that similarity, the
45 previous SARS-CoV and MERS-CoV human coronavirus were about 79% and 50% similar
46 to SARS-CoV-2, respectively (Jiang et al., 2020; Lu et al., 2020; Ren et al., 2020).

47 Due to the growing pandemic, governments have been forced to react with lighter or stronger
48 control measures influenced by their cultural backgrounds (Chiu et al., 2020). The Spanish
49 government declared a lockdown on March 14th, 2020 (starting midnight on March 15th).
50 Unprecedented containment and mitigation policies were implemented in an effort to limit
51 the spread of COVID-19. From March 15th to March 29th 2020, hereafter referred to as the
52 *minor lockdown*, people were recommended to work from home, and other measures such as
53 travel restrictions, isolation, and quarantine of patients, cancellation of private and public
54 events, online education, closure of bars and restaurants, or the prohibition of public
55 gatherings, were imposed. During those two weeks, only essential products could be sold in
56 supermarkets and pharmacies, and only a few industrial activities were allowed. From March
57 30th to April 12th 2020, hereafter referred to as the *major lockdown*, the Spanish Government
58 imposed more severe restrictions for two weeks more due to the national emergency caused
59 by the collapse of the health system. This situation led to one of the major social distancing
60 measures taken so far in the world, in which people were forced to stay at home (except for

61 very limited purposes) and only essential work such as healthcare and social care sectors,
62 police and armed forces, water and electricity supply was allowed. Besides, important
63 industrial activities such as construction were forbidden. These unprecedented measures gave
64 positive results and flattened the epidemic's curve after a month of lockdown (Tobías, 2020).
65 In short, the pandemic has definitely caused significant behavioral variations in society and
66 could provide a useful insight into how we can make our production methods more
67 sustainable (Sarkis et al., 2020).

68 The impact of particulate matter (PM) on health is well-known (Manisalidis et al., 2020; Xiao
69 et al., 2018) in terms of its effects on morbidity and mortality. Two sizes of particulate matter
70 are used to analyze air quality; fine particulate matter or $PM_{2.5}$, with a diameter of 2.5 μm or
71 less, and coarse particles or PM_{10} , with a diameter of 10 μm or less. However, the former are
72 more worrying because their small size allows them to penetrate deeper into the human
73 respiratory system via inhalation, which can potentially promote respiratory diseases such as
74 COVID-19 (Becker and Soukup, 1999; Horne et al., 2018; Xie et al., 2019; Xu et al., 2016).
75 Thus, it is noted that the pollution of $PM_{2.5}$ particles impairs the first line of defense of the
76 upper airways called cilia (Zhu et al., 2020) and populations exposed to a high concentration
77 of fine particulate matter are more prone to developing chronic respiratory diseases favorable
78 to infective agents (Mehmood et al., 2020). Long-term exposure to these small particles can
79 originate a chronic inflammatory stimulus, especially in children and unhealthy
80 population (Conticini et al., 2020), while short-term $PM_{2.5}$ exposure may also increase
81 susceptibility to infections (Chen et al., 2020). Indeed, this type of pollution damages human
82 airways, potentially facilitating viral infections, and weakens the immune response,
83 rendering the human body less effective in fighting against the virus-caused diseases (Liu et
84 al., 2019; Mehmood et al., 2020; Sedlmaier et al., 2009). The World Health Organization's

85 air quality guidelines recommend that PM_{2.5} concentration should not exceed a 10
86 µg/m³ annual mean and 25 µg/m³ 24-hour mean (World Health Organization, 2018). Road
87 traffic is the main emission source of atmospheric particulate matter, with the PM
88 components emitted from combustion processes mainly being the fine PM_{2.5} rather than the
89 coarse PM₁₀ (Nicolás et al., 2020). Other sources of PM_{2.5} include Sahara dust events, which
90 can significantly contribute to particulate matter concentrations in urban environments
91 (Fenech and Aquilina, 2020; Nicolás et al., 2020), shipping (Viana et al., 2020), secondary
92 inorganic aerosol or biomass burning, among others (Liu et al., 2020). The combustion
93 processes in thermal power stations and other industrial sectors, as well as the transport of
94 anthropogenic aerosols from central Europe to Mediterranean areas, together with certain
95 agricultural activities, must also be taken into account (García et al., 2019).

96 Spain, which still consumes a considerable amount of fossil fuels, is quite near to the Sahara
97 desert and has approximately 47 million inhabitants. Thus, it is in a high-risk zone of
98 pollution episodes (Lemou et al., 2020). The Mediterranean region has been identified as a
99 crossroads of air masses with many types of aerosols caused by many anthropogenic and
100 natural sources, such as the resuspension of dust from Africa (one of the most important
101 sources), the production of sea salt from the friction effect of the wind on the sea, industrial
102 and urban aerosols, forest fires, and biomass smoke from Eastern Europe (Lemou et al.,
103 2020). The zone is also known for its intensive shipping traffic, near a densely populated and
104 environmentally sensitive area with low atmospheric dispersion (Viana et al., 2020). Some
105 studies (Querol et al., 2014) confirm that the air quality in Spain (period 2001-2012) has a
106 declining trend of atmospheric pollution, primarily driven by emission reductions (Borge et
107 al., 2019). For example, Zaragoza, an inland city, has an average concentration of about 30
108 µg/m³ of PM_{2.5} (Chauhan and Singh, 2020), while Valladolid has an average of 15-20 µg/m³

109 (García et al., 2019). Furthermore, meteorological changes may also influence air quality
110 trends. Other studies on air pollution have considered weather changes as an influential factor
111 in Europe (Borge et al., 2019). Since Spain lies in a temperate zone (Briz-Redón and Serrano-
112 Aroca, 2020a) with the most diverse range of climates in Europe and is ranked as one of the
113 ten most climatically diverse countries in the world (*Ministerio de Medio Ambiente y Medio*
114 *Rural y Marino*. AEMET, 2011), it is necessary to take meteorological factors into account
115 when evaluating atmospheric pollutant concentrations.

116 We have recently demonstrated that the lockdown of Spain was not able to reduce severe air
117 pollution in all its forms considering meteorological factors on the pollutants' levels (Briz-
118 Redón et al., 2020). Thus, the 4-week lockdown had a significant impact on reducing the
119 atmospheric levels of NO₂ in most cities as well as CO, SO₂, and PM₁₀ in some cities, but
120 resulted in an increase of O₃ level. In the current paper, we focus on the variations of air
121 pollution in terms of fine particulate matter in several representative Spanish cities during
122 the lockdown using pollution data from the normal (non-lockdown) and minor and major
123 lockdown periods. Meteorological parameters, which play an important role in air pollution
124 transport, deposition, and transformation (Li et al., 2017; Shi et al., 2018; Wang et al., 2019,
125 2020) have also been taken into account. Several studies in the same research line have shown
126 evidence of significant reductions of severe PM_{2.5} pollution during COVID-19 lockdowns in
127 other countries, such as India (Mahato et al., 2020; Sharma et al., 2020) and Malaysia
128 (Abdullah et al., 2020). However, in other countries such as China, which probably applied
129 one of the strictest lockdown measures, the fine particulate matter in the atmosphere was not
130 significantly reduced (Wang et al., 2020). In addition, it has been reported that fine particulate
131 matter could be associated with the COVID-19 spread (Mehmood et al., 2020). For instance,

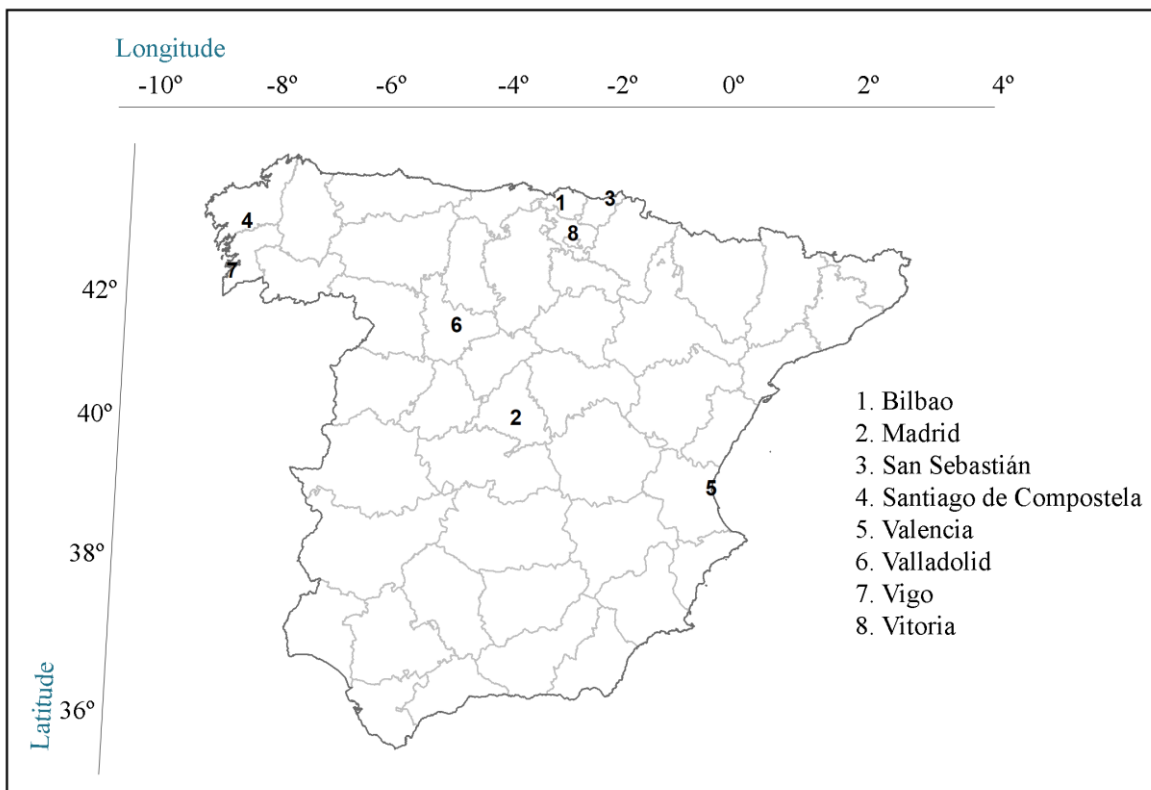
132 COVID-19 daily new cases have been positively related with $PM_{2.5}$ levels in 355
133 municipalities in the Netherlands (Cole et al., 2020), in Milan (Zoran et al., 2020) and in
134 China (Zhu et al., 2020). Therefore, in this paper we also explore the possible impact of the
135 $PM_{2.5}$ exposure and the effect of environmental conditions (temperature, precipitation, wind
136 speed, sunlight hours, maximum pressure) on the COVID-19 early spread during the Spanish
137 lockdown.

138

139 2. Data collection

140 2.1. $PM_{2.5}$ pollution data

141 A total of 8 major Spanish cities were considered in this study (see Figure 1).



142

143 **Figure 1.** Locations of the 8 cities considered for the $PM_{2.5}$ pollution analysis. The
144 coordinates are those of the pollution station in each case. The provincial borders are shown
145 in grey.

146

147 Table 1 shows that the populations of the selected cities (on 1st January 2019) ranged from

148 97,260 to 3,266,126 inhabitants (INE, 2019).

City	Province	Population	Station	Longitude	Latitude
Bilbao	Biscay	346,843	Europa	-2.9024	43.2549
Madrid	Madrid	3,266,126	Escuelas	-3.6823	40.4217
			Aguirre		
San Sebastián	Gipuzkoa	187,415	Avenida	-2.0109	43.3094
			Tolosa		
Santiago de Compostela	A Coruña	97,260	San Caetano	-8.5311	42.8878
Valencia	Valencia	794,288	Avenida	-0.3428	39.4575
			Francia		
Valladolid	Valladolid	298,412	La Rubia II	-4.7406	41.6300
Vigo	Pontevedra	295,364	Coia	-8.7421	42.8548
Vitoria	Álava	251,774	Avenida	-2.6807	42.8548
			Gasteiz		

149

150 **Table 1.** Name, province, population (on 1st January 2019), and longitude and latitude of the
151 air quality stations selected for the 8 cities studied.

152

153 Table 2 provides a city-level statistical summary of the PM_{2.5} levels in each of the periods

154 considered for the analysis.

City	Normal period	Minor lockdown	Major lockdown
------	---------------	----------------	----------------

	Mea n	1st Q	3rd Q	Mea n	1st Q	3rd Q	Mea n	1st Q	3rd Q
Bilbao	9.13	6.00	12.50	13.93	0	17.00	8.14	6.25	9.75
Madrid	11.51	6.00	14.00	6.60	4.50	8.50	7.00	5.00	9.00
San Sebastián	8.95	6.00	11.00	13.17	5	15.50	8.64	7.00	10.00
Santiago de Compostela	12.64	8.20	17.00	15.18	0	18.00	9.01	7.23	9.85
Valencia	12.71	6.00	17.00	6.73	6.00	7.50	6.93	5.00	8.75
Valladolid	11.30	6.50	15.00	11.40	8.50	13.00	6.14	5.00	7.00
Vigo	9.11	6.45	12.00	11.93	9.20	13.50	6.21	5.00	6.78
Vitoria	7.33	4.25	10.00	10.87	9.00	13.50	6.36	4.50	7.00

155 Table 2. City-level statistical summary of PM_{2.5} levels in terms of mean value, 1st quartile
156 (1st Q), and 3rd quartile (3rd Q) at each of the different periods (normal, minor and major
157 lockdown) considered for the analysis

158

159 Pollution data was downloaded from several regional and local web pages that provide this
160 official information for each city: Bilbao (Euskadi.eus, 2020); Madrid (Ayuntamiento de
161 Madrid, 2020); San Sebastián (Euskadi.eus, 2020); Santiago de Compostela (Xunta de
162 Galicia, 2020); Valencia (GVA, 2020); Valladolid (Junta de Castilla y León, 2020); Vigo
163 (Xunta de Galicia, 2020) and Vitoria (Euskadi.eus, 2020). PM_{2.5} data was obtained from
164 traffic stations in the cities (see Table 1) whose pollution levels were mainly determined by
165 traffic emissions (UK Department for Environment Food and Rural Affairs, n.d.).

166 PM_{2.5} (in µg/m³) daily levels were collected from each station every day from March 4th to
167 April 14th 2019 and from March 2nd to April 12th 2020 using the sampling method defined by
168 the current Directive 2015/1480 (2015/1480/UE, 2015) instead of the previous (2008/50/CE,
169 2008), following the gravimetric method of determining PM_{2.5} mass fraction in suspended
170 particulate matter (EN 12341:2014, 2014). The measurements are commonly performed
171 with active samplers operating at 2.3 m³/h over a sampling period of 24 h. The range of

172 application of this European Standard is from 1 $\mu\text{g}/\text{m}^3$ (detection method limit) up to
 173 approximately 120 $\mu\text{g}/\text{m}^3$.

174

175 *2.2. Meteorological data*

176 Meteorological data was downloaded from the OpenData platform of the State
 177 Meteorological Agency (AEMET) through its API. Eight meteorological stations were
 178 selected to obtain the meteorological variables of interest: temperature ($^{\circ}\text{C}$), precipitation
 179 (mm), wind speed (km/h), sunlight hours (number of hours over the threshold of 120W/m²)
 180 and min and max atmospheric pressure (hPa). Table 3 provides a statistical summary of the
 181 meteorological variables considered.

182

City	Temperature ($^{\circ}\text{C}$)			Precipitation (mm)			Windspeed (km/h)			Sunlight hours (h)			Maximum pressure (hPa)		
	Mean	1 st Q	3 rd Q	Mean	1 st Q	3 rd Q	Mean	1 st Q	3 rd Q	Mean	1 st Q	3 rd Q	Mean	1 st Q	3 rd Q
Bilbao	12.	10.	14.	3.1	0.	3.1	3.5	2.	3.9	4.4	0.	7.5	101	101	102
	19	20	20	4	00	0	2	20	0	8	88	8	7.14	2.60	2.68
Madrid	11.	9.7	13.	1.3	0.	0.5	3.3	1.	4.2	7.1	3.	10.	952.	949.	957.
	32	5	25	7	00	5	4	90	0	5	43	98	80	20	85
San Sebastián	11.	9.3	13.	3.9	0.	5.1	4.5	2.	5.3	5.3	1.	9.0	990.	986.	996.
	24	0	00	2	00	0	0	80	0	4	40	0	74	30	20
Santiago de Compostela	10.	8.4	12.	4.2	0.	3.4	2.9	1.	3.6	5.9	2.	10.	978.	974.	983.
	35	0	55	0	00	5	5	90	0	1	38	43	55	25	35
Valencia	14.	12.	15.	1.4	0.	0.2	4.1	3.	4.7	7.1	3.	10.	101	100	101
	00	60	00	5	00	3	4	10	0	8	88	63	3.71	9.70	8.40
Valladolid	10.	7.9	11.	1.2	0.	1.2	2.2	1.	2.8	7.3	4.	10.	935.	932.	941.
	09	5	65	3	00	0	4	40	0	4	28	63	94	03	10
Vigo	11.	10.	13.	5.1	0.	3.9	3.5	2.	3.9	6.8	2.	10.	990.	986.	995.
	86	00	50	6	00	0	1	80	0	4	70	60	88	30	45
Vitoria	8.6	6.6	10.	1.4	0.	1.0	3.5	2.	4.2	6.2	3.	9.8	961.	957.	966.
	0	0	40	1	00	5	9	50	0	3	00	0	68	60	95

183 Table 3. Statistical summary of the meteorological variables considered for the analysis in
 184 terms of mean value, 1st quartile (1st Q), and 3rd quartile (3rd Q) during the entire study period.

185

186 *2.3. COVID-19 data*

187 COVID-19 data was also downloaded from multiple local and regional webpages: Bilbao
188 (Euskadi, 2020), Madrid (Datos Abiertos Comunidad de Madrid, 2020), San Sebastián
189 (Euskadi, 2020), Santiago de Compostela (Galicia, 2020), Valladolid (JCyL, 2020), Vigo
190 (Galicia, 2020), and Vitoria (Euskadi, 2020). Data was collected for the period comprised
191 from March 18th to April 12th 2020, and corresponded to the number of accumulated
192 COVID-19 cases in each city.

193

194 **3. Method**

195 *3.1. Software*

196 The R programming language (Team, 2020) was used to carry out the statistical analysis.
197 The R packages effects (Fox and Weisberg, 2018), ggplot2 (Wickham, 2016), INLA
198 (Lindgren and Rue, 2015; Rue et al., 2009), lubridate (Grolemund and Wickham, 2011),
199 RCurl (Lang and the CRAN team, 2015), sjPlot (Ludecke, 2016) and XML (Lang, 2020)
200 were specifically required for some parts of the study.

201 *3.2. Modeling pollution levels*

202 As weather patterns such as temperature, rain, wind speed, sunlight hours, or atmospheric
203 pressure are known to significantly affect ground-level pollutant concentrations (Venter et
204 al., 2020), to discriminate between the effects of meteorology and lockdown, these variable
205 meteorological factors were considered in the statistical model. Weekend days were also
206 included because of their reduced pollutant levels as a result of less road traffic. The daily
207 PM_{2.5} pollutant levels of the 8 cities were fitted through a statistical model accounting for
208 meteorological conditions, weekend days, and lockdown periods. The PM_{2.5} pollutant levels
209 in a city i on date t were modeled by the regression shown in Eq. (1), including quadratic

210 terms capable of capturing non-linear relationships between the meteorological variables and
 211 the PM_{2.5} level.

212

213

$$214 \quad (PM_{2.5})_{it} = \alpha + \beta_{11} \text{Temperature}_{it} + \beta_{12} \text{Temperature}^2_{it} + \beta_{21} \text{Rain}_{it} + \beta_{22}$$

215

$$215 \quad (1) \quad \text{Rain}^2_{it} + \beta_{31} \text{Wind}_{it} + \beta_{32} \text{Wind}^2_{it} + \beta_{41} \text{Sunlight}_{it} + \beta_{42} \text{Sunlight}^2_{it} + \beta_{51}$$

216

$$216 \quad \text{Max_pressure}_{it} + \beta_{52} \text{Max_pressure}^2_{it} + \gamma \text{Weekend}_t + \rho_i \text{City}_i + (\delta_1 +$$

217

$$217 \quad \delta_{1i}) \text{Minor_lockdown}_t + (\delta_2 + \delta_{2i}) \text{Major_lockdown}_t$$

218

218 where α is the global intercept of the model, β_{kj} ($j = 1, 2; k = 1, 2, 3, 4, 5$) measures the effect of

219 the corresponding meteorological covariate (in quadratic form, or not) on the $(PM_{2.5})_{it}$ values,

220 γ measures the effect of weekend days on the $(PM_{2.5})_{it}$ values, ρ_i represents the city-specific

221 effect at normal non-lockdown PM_{2.5} levels, δ_1 and δ_2 indicate the overall minor and major

222 lockdown effect, respectively, on $(PM_{2.5})_{it}$ values, and δ_{1i} and δ_{2i} indicate the city-specific

223 effect of minor and major lockdown, respectively, on the $(PM_{2.5})_{it}$ value. Several bank

224 holidays during the study were also considered as weekend days.

225 This regression model estimated the variation magnitude of PM_{2.5} due to lockdown in the

226 cities while simultaneously accounting for meteorological and week-day effects.

227 3.3. Modeling COVID-19 spread

228 The association between COVID-19 spread and the PM_{2.5} levels and environment was also

229 studied for all the cities included in the study except for the case of Valencia, of which daily

230 COVID-19 data is not available. Hence, the number of accumulated COVID-19 cases in each

231 city was modelled in terms of each of the environmental covariates available (temperature,

232 precipitation, wind speed, sunlight hours, maximum atmospheric pressure, and PM_{2.5} level)

233 through a Poisson model. Specifically, the number of accumulated COVID-19 cases on date
234 t , y_t , was modelled as follows:

$$y_t = \text{Po}(\mu_t)$$
$$(2) \quad \log(\mu_t) = \alpha + \beta x_t + \delta_t$$

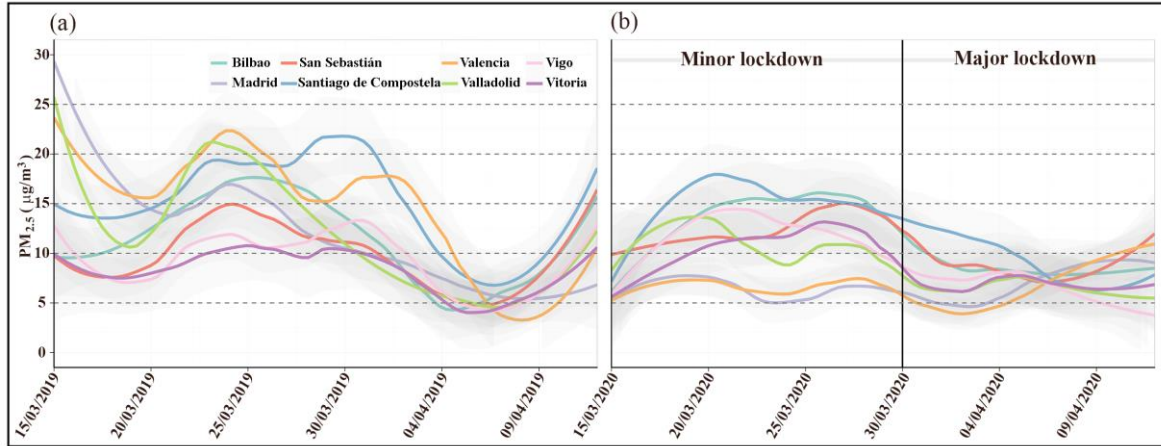
237 where α is the global intercept of the model, x_t represents the environmental covariate, β
238 refers to the coefficient that measures the magnitude of the effect of x_t on $\log(\mu_t)$, and δ_t is a
239 temporally-structured effect for day t to control for serial correlation (defined through a first-
240 order random walk). Lagged covariate effects were considered in the model by replacing the
241 term x_t by x_{t-7} , and x_{t-14} , which allows assessing the possible effect of the environmental
242 conditions on the previous two weeks on the total number of cases reported on date t . The
243 model described by Equation (2) was fitted using the Integrated Nested Laplace
244 Approximation (INLA) method (Lindgren and Rue, 2015; Rue et al., 2009).

245

246 **4. Results and discussion**

247 *4.1. Particulate matter measurements*

248 The $\text{PM}_{2.5}$ values were collected for the first 28 days of the lockdown and the two weeks
249 before the beginning of the lockdown. The same period of the year 2019 was also studied as
250 a reference. Figure 2 shows the smoothed $\text{PM}_{2.5}$ values, through a local regression technique
251 (LOESS) for ease of visualization and comparison (Fox and Weisberg, 2018), measured
252 during the lockdown period (from March 15th to April 12th 2020) and the same period of
253 2019.



254

255 **Figure 2.** PM_{2.5} levels measured from March 15th to April 12th 2019 (a), March 15th to March
 256 29th 2020 (minor lockdown) and March 30th to April 12th 2020 (major lockdown) (b) in 8
 257 cities. These values were smoothed through LOESS for ease of visualization and comparison.
 258

259 These measurements show a gradual reduction of PM_{2.5} levels in 2020 with respect to those
 260 of 2019, especially during the major lockdown (see Table 2). However, other factors such as
 261 meteorological variables must be considered in order to isolate the effect of the lockdown
 262 periods.

263

264 4.2. Correlation analysis of the meteorological variables

265 Table 4 shows the correlation results of the meteorological variables considered for the fine
 266 particulate matter pollution analysis.

	Temperature	Precipitation	Wind speed	Sunlight hours	Min Pressure	Max Pressure
Temperature	1.000	-0.139	0.008	0.165	0.359	0.349
Precipitation	-0.139	1.000	0.296	-0.372	-0.009	0.030
Wind speed	0.008	0.296	1.000	-0.185	0.122	0.174
Sunlight hours	0.165	-0.372	-0.185	1.000	-0.043	-0.063

Min Pressure	0.359	-0.009	0.122	-0.043	1.000	0.993
Max Pressure	0.349	0.030	0.174	-0.063	0.993	1.000

267

268 **Table 4.** Correlation results for the meteorological variables considered for the PM_{2.5}
 269 pollution analysis.

270

271 All the pairwise correlation values between the meteorological variables were moderate to
 272 low, ruling out multicollinearity issues, except for atmospheric pressure. Only maximum
 273 pressure was therefore considered for the PM_{2.5} pollution analysis because of the high
 274 correlation between the maximum and minimum pressure.

275

276 4.3. Overall effects

277 A stepwise algorithm was applied to the regression model represented by Eq. (1) to find the
 278 subset of the variables providing the best model in terms of the Akaike information criterion.

279 The overall variables included in this model and the coefficients associated with each one are
 280 shown in Table 5.

281

	Estimate	p-value
(Intercept) (α)	-88.5323	0.0014
Temperature (β_{11})	0.8601	0.0096
Temperature² (β_{12})	-0.0297	0.0425
Wind speed (β_{31})	-0.6965	0.0000
Sunlight hours (β_{41})	-0.2959	0.0789
Sunlight hours² (β_{42})	0.0525	0.0001
Max Pressure (β_{51})	0.0920	0.0008
Weekend day (γ)	0.8316	0.0205
Minor lockdown day (δ_1)	4.6398	0.0001
Major lockdown day (δ_2)	-1.2126	0.3487

282 **Table 5.** Global effects estimated between variables and fine particulate matter analyzed by
283 Eq. (1). The estimated model coefficients are shown along with the associated p -values.
284

285 First, it is worth noting that the two precipitation-related variables were discarded, suggesting
286 the absence of an association between precipitation and $PM_{2.5}$ values, and also that the
287 maximum pressure and weekend days have a positive association with $PM_{2.5}$ levels, while
288 wind speed has a negative association with pollutant levels. The model also suggests that
289 temperature and the number of sunlight hours have a quadratic relationship with $PM_{2.5}$ levels,
290 which makes interpretation more challenging. Nevertheless, for the range of values attained
291 by temperature and number of sunlight hours during the period under study, the coefficients
292 estimated for the linear and quadratic forms of these two variables indicate that higher values
293 of these two variables are associated with higher $PM_{2.5}$ levels.

294 The results obtained mostly agree with other studies in the literature. Regarding the positive
295 association of $PM_{2.5}$ with temperature and sunlight hours, dry sunny weather frequently leads
296 to thermal inversion, which prevents the vertical dispersion of pollutants (Mao et al., 2020)
297 and increases their concentration, generating significant smog episodes. Indeed, sunny
298 weather also favors photochemical reactions (Wang et al., 2020; Xu et al., 2020) while dry
299 conditions prolong aerosols and atmospheric loadings (Lemou et al., 2020). Higher wind
300 speed can also reduce $PM_{2.5}$ pollution (Radzka, 2020; Yousefian et al., 2020), while lower
301 wind speeds can be associated with reduced particulate matter in the air because of higher
302 deposition (Xu et al., 2020). High pressure seems to positively affect PM formation, as
303 particulates cannot disperse correctly and tend to concentrate, which contributes to higher
304 atmospheric particulate loads (Czerwinska and Wielgosinski, 2020; Hoque et al., 2020).

305

306 *4.4. Analysis of coefficients of determination (R^2)*

307 The analysis of the coefficients of determination (R^2) associated with the models is shown in
 308 Table 6.

Model	R^2
Meteorological	0.2853
Meteorological + Weekend	0.2921
Meteorological + Weekend + City	0.3476
Meteorological + Weekend + City * Lockdown	0.4486

309

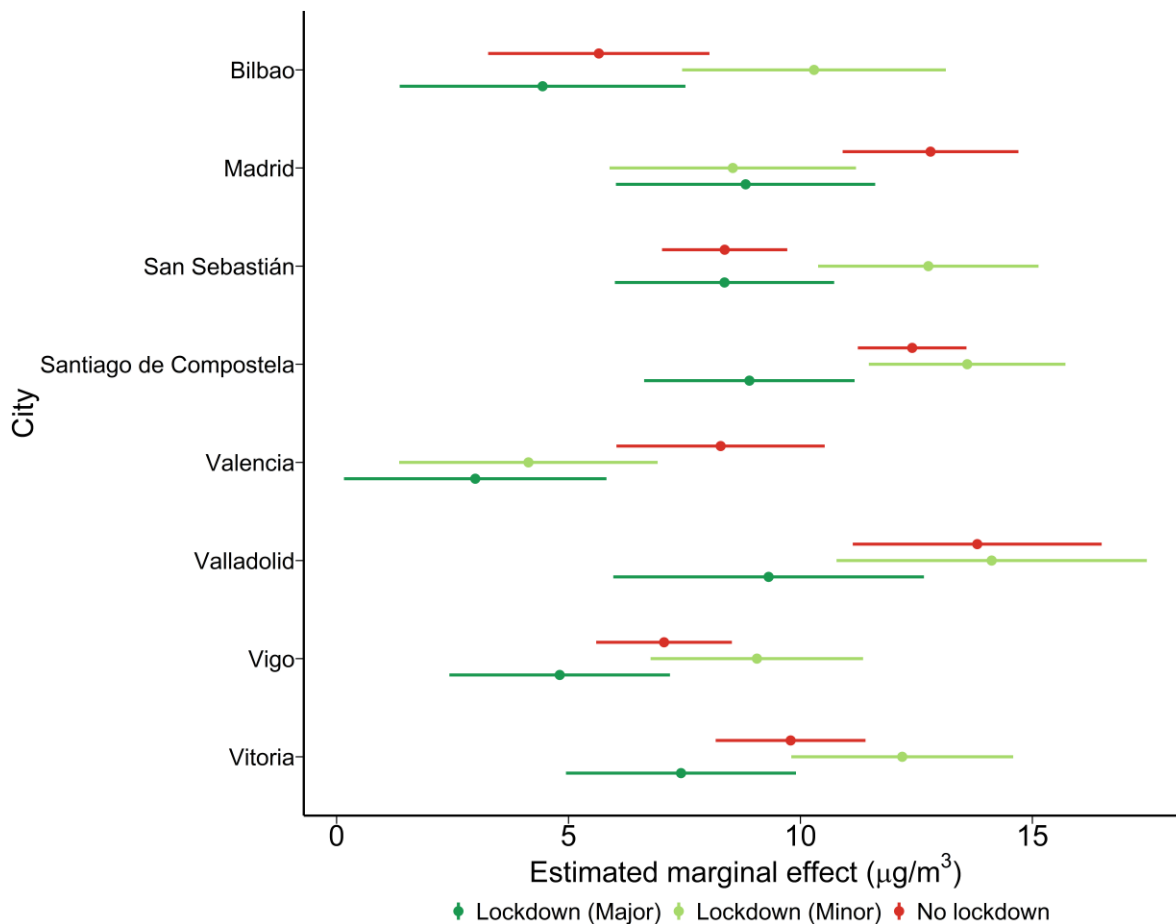
310 **Table 6.** Coefficients of determination (R^2) obtained from modeling the $PM_{2.5}$ values
 311 considering a larger subset of the variables included in the statistical model. The values of
 312 the last row are those of the complete model provided by Eq. (1).
 313

314 From this analysis, it follows that the $PM_{2.5}$ levels seem to be quite dependent on
 315 meteorological factors while the inclusion of city-level and lockdown effects is fundamental
 316 to improve R^2 values.

317 *4.5. Marginal city-specific effect for the $PM_{2.5}$ pollutant*

318 The results shown in Table 5 suggest that the minor lockdown led to overall increases in
 319 $PM_{2.5}$ levels in the cities considered. Nevertheless, the full analysis of the proposed model
 320 requires the consideration of the estimated city-specific coefficients, which were omitted in
 321 Table 5. In fact, overall city-specific effects, overall period (no lockdown, minor lockdown,
 322 or major lockdown) effects and city-specific effects of the city-period interactions were used
 323 to estimate the city-specific marginal effects of the $PM_{2.5}$ levels. These results show the $PM_{2.5}$
 324 variations due to the COVID-19 lockdown in each city. These marginal effects and the
 325 associated 95% confidence intervals are shown in Figure 3. The point estimates shown in this
 326 figure represent the adjusted effect of the combination of city and period under study on

327 PM_{2.5} pollution levels. Differences between marginal effects are statistically significant when
 328 the associated confidence intervals do not overlap. Figure 3 shows the city-specific marginal
 329 effects estimated by Eq. (1) for PM_{2.5} levels during minor lockdown, major lockdown, and
 330 no lockdown.



331

332 **Figure 3.** City-specific marginal effects estimated by Eq. (1) for PM_{2.5} levels during minor
 333 lockdown, major lockdown, and no lockdown. Differences between marginal effects are
 334 statistically significant when the associated confidence intervals do not overlap.

335

336 As can be seen, the differences between PM_{2.5} concentrations during the normal period,
 337 minor, and major lockdown were not significantly different in many of the cities. However,
 338 there was a rising trend in the minor lockdown PM_{2.5} levels in some cities considering
 339 meteorological and week-day effects, especially in Bilbao and San Sebastián. Considering
 340 that relative humidity was not included in the linear regression, these results may simply be

341 an artifact due to high relative humidity episodes that can improve the aqueous-phase
342 oxidation of pollutants such as SO₂ and PM_{2.5} levels (Wang et al., 2020). Both are coastal
343 cities in the north of Spain, where higher humidity is usual and are more likely to receive
344 atmospheric particles from shipping and sea salt, two of the main sources of the pollutant
345 analyzed. On the other hand, the major lockdown period led to a general reduction in fine
346 particulate matter, although the only statistically significant reductions were in Valencia,
347 from 8.28±1.14 to 2.99±1.44 µg/m³ and Santiago de Compostela, from 12.41±0.60 to
348 8.90±1.16 µg/m³, in terms of marginal effects. The PM_{2.5} reductions can be more clearly
349 related to the significant reduction of transport, industry, and agriculture (Wang et al., 2020).
350 However, it is important to mention that the relationship between traffic and anthropogenic
351 activity with PM sources and particle size is not necessarily unequivocal (Nicolás et al.,
352 2020), so that the variations shown may not always be as clear as might be expected.
353 Nevertheless, the reduction of this fine particulate matter was not expected to be very high.
354 It is known that these inhalable particles are emitted in large volumes and persist in the air
355 for longer periods, which means they can spread easier (Xiao et al., 2018). In fact, very small
356 variations of large particulate matter (PM₁₀) were also reported in Barcelona during the minor
357 lockdown (Tobías, 2020), which is in agreement with our results. Since a significant part of
358 this fine particulate matter is from natural sources, a reduction in emissions of human origin
359 would need a much longer lockdown to avoid severe PM_{2.5} pollution. Nonetheless, a further
360 reduction of fine particulate matter can be expected in the forthcoming weeks because of the
361 longer-term effects of the restrictions and the lifestyle changes during the lockdown. These
362 improvements would exponentially improve the prognosis of the percentage of COVID-19
363 patients as previous studies have shown that PM_{2.5} pollution can carry viruses (Horne et al.,

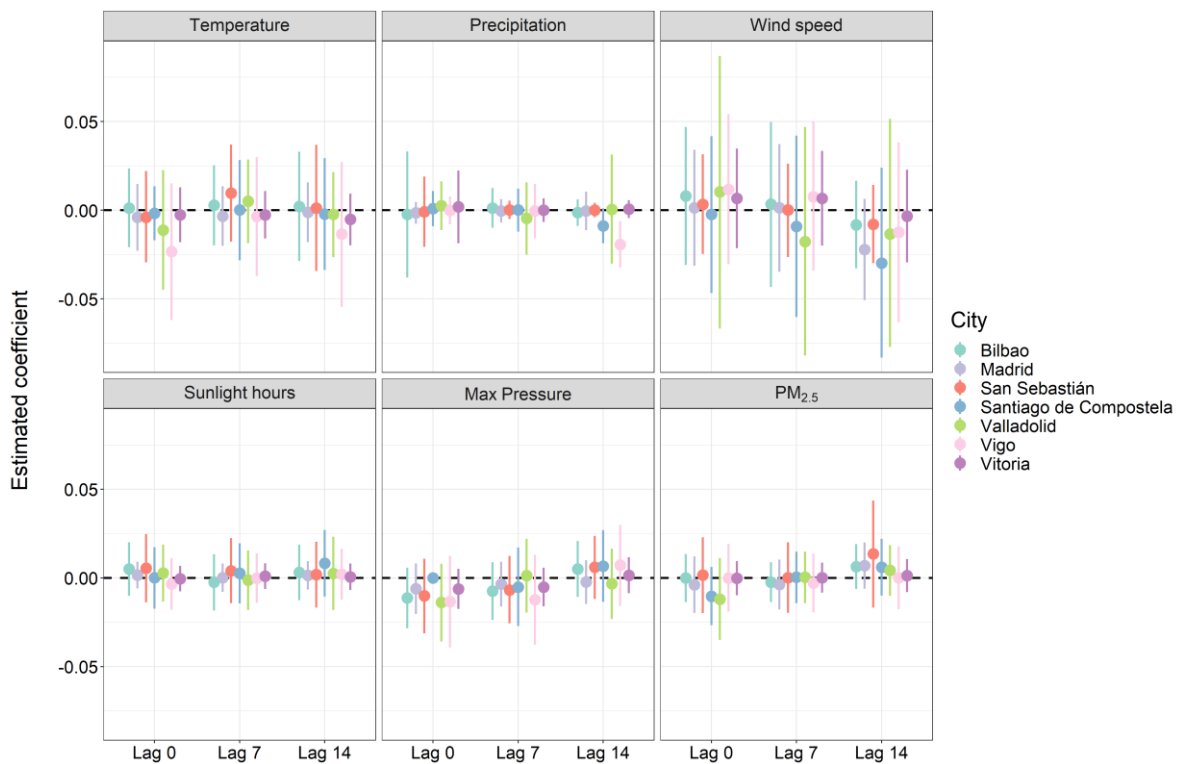
364 2018; Xie et al., 2019; Xu et al., 2016) and particulate matter can make people more
365 susceptible to the virus (Becker and Soukup, 1999).

366

367 4.6. Relationship between COVID-19 spread and PM_{2.5} levels or weather patterns

368 The relationship between COVID-19 confirmed cases and PM_{2.5} levels or meteorological
369 factors during the Spanish lockdown is shown in Figure 4.

370



371

372 **Figure 4.** Effects of each environmental covariate on COVID-19 spread estimated for each
373 city under study. Each dot represents the estimation of the coefficient (β parameter in
374 Equation (2)), whereas the segment corresponds to the 95% credible interval associated with
375 the estimation.

376

377 Thus, no association is observed between COVID-19 accumulated cases and PM_{2.5} levels or
378 weather patterns (temperature, precipitation, wind speed, sunlight hours, maximum
379 pressure), contrary to what we could expect according to recent results on the effect of
380 particulate matter levels (Cole et al., 2020; Zhu et al., 2020; Zoran et al., 2020). Anyhow, it
381 is worth noting that many controversial results have been reported about the effect of climate
382 on the COVID-19 spread, partly as a consequence of the different statistical methodologies
383 chosen (Briz-Redón and Serrano-Aroca, 2020b). We have used univariate Poisson models
384 accounting for the presence of temporal autocorrelation in the data. The inclusion of such a
385 temporal term allows capturing the epidemic growth and reduces the chances of obtaining
386 spurious or artefactual associations, which can easily arise when correlation coefficients are
387 computed. The fact that many published studies are strongly based on correlation
388 coefficients, together with the existing uncertainty about COVID-19 data, are sufficient
389 reasons for still being cautious about the association between COVID-19 and the
390 environment. Furthermore, the use of multivariate models that allow accounting for several
391 of the factors (environmental or non-environmental) that are possibly implicated in COVID-
392 19 is highly advisable, although we discarded the use of these models in this case due to the
393 length of the time series available.

394 **5. Conclusions**

395 The fine particulate matter level variations during the COVID-19 lockdown were studied at
396 the city-level in Spain. Air pollution in terms of PM_{2.5} levels was analyzed through a
397 regression model to determine pollutant variations during lockdown while considering the
398 influence of some meteorological factors. The results obtained show that the 4-week COVID-
399 19 lockdown was not long enough to reduce PM_{2.5} levels in all the cities. Statistically
400 significant reductions were only found in two cities during the last two weeks of the

401 lockdown. Finally, no evidence of a relationship between COVID-19 spread and PM_{2.5} levels
402 or weather patterns was found during the lockdown in Spain. These results should be
403 analyzed with caution, while a future in-depth analysis of the long-term effects will be
404 required to obtain further information.

405

406

407 **Acknowledgments**

408 The authors are grateful to the *Universitat de València* for the VLC-CAMPUS “*Atracció de*
409 *Talent*” PhD fellowship (awarded to C.B-S) and the *Fundación Universidad Católica de*
410 *Valencia San Vicente Mártir* for the financial support through Grants 2019-231-003UCV and
411 2020-231-001UCV (awarded to Á.S-A).

412

413 **Conflicts of Interest**

414 The authors declare no conflict of interest.

415 **References**

416 2008/50/CE, 2008. Directive 2008/50/EC of the European Parliament and of the Council of
417 21st May 2008 on ambient air quality and cleaner air for Europe.

418 2015/1480/UE, 2015. Directive 2015/1480/UE of the Commission of 28th August 2015
419 amending several annexes to Directives 2004/107/EC and 2008/50/EC laying down
420 the rules concerning the assessment of ambient air quality.

421 Abdullah, S., Mansor, A.A., Napi, N.N.L.M., Mansor, W.N.W., Ahmed, A.N., Ismail, M.,
422 Ramly, Z.T.A., 2020. Air quality status during 2020 Malaysia Movement Control
423 Order (MCO) due to 2019 novel coronavirus (2019-nCoV) pandemic. *Sci. Total*
424 *Environ.* 729, 139022. <https://doi.org/10.1016/j.scitotenv.2020.139022>

425 Ayuntamiento de Madrid, 2020. Portal de datos abiertos del Ayuntamiento de Madrid
426 [WWW Document]. Bicimad. URL <https://datos.madrid.es/portal/site/egob/>

427 Becker, S., Soukup, J.M., 1999. Exposure to urban air particulates alters the macrophage-
428 mediated inflammatory response to respiratory viral infection. *J. Toxicol. Environ.*
429 *Heal. - Part A* 57, 445–457. <https://doi.org/10.1080/009841099157539>

430 Borge, R., Requía, W.J., Yagüe, C., Jhun, I., Koutrakis, P., 2019. Impact of weather
431 changes on air quality and related mortality in Spain over a 25 year period [1993–
432 2017]. *Environ. Int.* 133, 105272. <https://doi.org/10.1016/j.envint.2019.105272>

433 Briz-Redón, Á., Belenguer-Sapiña, C., Serrano-Aroca, Á., 2020. Changes in air pollution
434 during COVID-19 lockdown in Spain: a multi-city study. *J. Environ. Sci.*
435 <https://doi.org/10.1016/j.jes.2020.07.029>

436 Briz-Redón, Á., Serrano-Aroca, Á., 2020a. A spatio-temporal analysis for exploring the
437 effect of temperature on COVID-19 early evolution in Spain. *Sci. Total Environ.* 728,
438 138811. <https://doi.org/10.1016/j.scitotenv.2020.138811>

439 Briz-Redón, Á., Serrano-Aroca, Á., 2020b. The effect of climate on the spread of the
440 COVID-19 pandemic: A review of findings, and statistical and modelling techniques.
441 *Prog. Phys. Geogr. Earth Environ.* 030913332094630.
442 <https://doi.org/10.1177/0309133320946302>

443 Chauhan, A., Singh, R.P., 2020. Decline in PM2.5 concentrations over major cities around
444 the world associated with COVID-19. *Environ. Res.* 187, 109634.
445 <https://doi.org/10.1016/j.envres.2020.109634>

446 Chen, N., Zhou, M., Dong, X., Qu, J., Gong, F., Han, Y., Qiu, Y., Wang, J., Liu, Y., Wei,
447 Y., Xia, J., Yu, T., Zhang, X., Zhang, L., 2020. Epidemiological and clinical
448 characteristics of 99 cases of 2019 novel coronavirus pneumonia in Wuhan, China: a

449 descriptive study. *Lancet* 395, 507–513. <https://doi.org/10.1016/S0140->
450 [6736\(20\)30211-7](https://doi.org/10.1016/S0140-6736(20)30211-7)

451 Chiu, A.S.F., Aviso, K.B., Tan, R.R., 2020. On general principles at the sustainability
452 science-policy interface. *Resour. Conserv. Recycl.* 158, 104828.
453 <https://doi.org/10.1016/j.resconrec.2020.104828>

454 Cole, M.A., Ozgen, C., Strobl, E., 2020. Air Pollution Exposure and Covid-19.

455 Conticini, E., Frediani, B., Caro, D., 2020. Can atmospheric pollution be considered a co-
456 factor in extremely high level of SARS-CoV-2 lethality in Northern Italy? *Environ.*
457 *Pollut.* <https://doi.org/10.1016/j.envpol.2020.114465>

458 Czerwinska, J., Wielgosinski, G., 2020. The effect of selected meteorological factors on the
459 process of “Polish smog” formation. *J. Ecol. Eng.* 21, 180–187.
460 <https://doi.org/10.12911/22998993/112764>

461 Datos Abiertos Comunidad de Madrid, 2020. Covid 19 -TIA por Municipios y Distritos de
462 Madrid [WWW Document]. URL
463 https://datos.comunidad.madrid/catalogo/dataset/covid19_tia_muni_y_distritos
464 (accessed 8.8.20).

465 EN 12341:2014, 2014. Ambient air: standard gravimetric measurement method for the
466 determination of PM10 and PM2.5 mass concentration of suspended particulate
467 matter.

468 Euskadi.eus, 2020. Euskadi.eus - Toda la información, trámites y servicios del Gobierno
469 Vasco [WWW Document]. URL <https://www.euskadi.eus/inicio/>

470 Euskadi, 2020. Informes con la actualización de datos sobre la evolución del nuevo
471 coronavirus COVID-19 [WWW Document]. URL [https://www.euskadi.eus/boletin-](https://www.euskadi.eus/boletin-de-datos-sobre-la-evolucion-del-coronavirus/web01-a2korona/es/)
472 [de-datos-sobre-la-evolucion-del-coronavirus/web01-a2korona/es/](https://www.euskadi.eus/boletin-de-datos-sobre-la-evolucion-del-coronavirus/web01-a2korona/es/) (accessed 8.8.20).

473 Fenech, S., Aquilina, N.J., 2020. Science of the Total Environment Trends in ambient
474 ozone , nitrogen dioxide , and particulate matter concentrations over the Maltese
475 Islands and the corresponding health impacts. *Sci. Total Environ.* 700, 134527.
476 <https://doi.org/10.1016/j.scitotenv.2019.134527>

477 Fox, J., Weisberg, S., 2018. *An R Companion to Applied Regression*. SAGE Publications.

478 Galicia, 2020. El mapa y la evolución del coronavirus en Galicia [WWW Document]. URL
479 <https://afondo.farodevigo.es/galicia/el-mapa-del-coronavirus-en-galicia.html> (accessed
480 8.8.20).

481 García, M.Á., Sánchez, M.L., de los Ríos, A., Pérez, I.A., Pardo, N., Fernández-Duque, B.,
482 2019. Analysis of PM10 and PM2.5 Concentrations in an Urban Atmosphere in
483 Northern Spain. *Arch. Environ. Contam. Toxicol.* 76, 331–345.
484 <https://doi.org/10.1007/s00244-018-0581-3>

485 Grolemond, G., Wickham, H., 2011. Dates and Times Made Easy with lubridate. *J. Stat.*
486 *Softw.* 40, 1–25.

487 GVA, 2020. Calidad del aire - Generalitat Valenciana [WWW Document]. URL
488 <http://www.agroambient.gva.es/es/web/calidad-ambiental/calidad-del-aire>

489 Hoque, M.M., Ashraf, Z., Kabir, H., Sarker, E., 2020. Meteorological Influences on
490 Seasonal Variations of Air Pollutants (SO₂, NO₂, O₃, CO, PM_{2.5} and PM₁₀) in the
491 Dhaka Megacity. *Am. J. Pure Appl. Biosci.* 2, 15–23.
492 <https://doi.org/10.34104/ajpab.020.15023>

493 Horne, B.D., Joy, E.A., Hofmann, M.G., Gesteland, P.H., Cannon, J.B., Lefler, J.S.,
494 Blagev, D.P., Kent Korgenski, E., Torosyan, N., Hansen, G.I., Kartchner, D., Arden
495 Pope, C., 2018. Short-term elevation of fine particulate matter air pollution and acute
496 lower respiratory infection. *Am. J. Respir. Crit. Care Med.* 198, 759–766.

497 <https://doi.org/10.1164/rccm.201709-1883OC>

498 INE, 2019. Instituto Nacional de Estadística. (National Statistics Institute) [WWW
499 Document]. URL
500 <https://www.ine.es/dynt3/inebase/es/index.htm?padre=517&capsel=522>

501 ISCIH, n.d. Situación de COVID-19 o Coronavirus en España. [WWW Document].
502 JCyL, A. de datos abiertos, 2020. Situación epidemiológica del coronavirus en Castilla y
503 León [WWW Document]. URL
504 [https:// analisis.datosabiertos.jcyl.es/pages/coronavirus/descarga-de-datasets#situacion-](https:// analisis.datosabiertos.jcyl.es/pages/coronavirus/descarga-de-datasets#situacion-actual)
505 [actual](https:// analisis.datosabiertos.jcyl.es/pages/coronavirus/descarga-de-datasets#situacion-actual) (accessed 8.8.20).

506 Jiang, S., Du, L., Shi, Z., 2020. An emerging coronavirus causing pneumonia outbreak in
507 Wuhan, China: calling for developing therapeutic and prophylactic strategies. *Emerg.*
508 *Microbes Infect.* <https://doi.org/10.1080/22221751.2020.1723441>

509 Junta de Castilla y León, 2020. ESCO - Consulta de Datos de la Red de Calidad del Aire
510 [WWW Document].

511 Lai, C.C., Shih, T.P., Ko, W.C., Tang, H.J., Hsueh, P.R., 2020. Severe acute respiratory
512 syndrome coronavirus 2 (SARS-CoV-2) and coronavirus disease-2019 (COVID-19):
513 The epidemic and the challenges. *Int. J. Antimicrob. Agents.*
514 <https://doi.org/10.1016/j.ijantimicag.2020.105924>

515 Lang, D.T., 2020. XML: Tools for Parsing and Generating XML Within R and S-Plus.

516 Lang, D.T., the CRAN team, 2015. RCurl: General Network (HTTP/FTP/...) Client
517 Interface for R. R package version 1.95-4.7.

518 Lemou, A., Rabhi, L., Merabet, H., Ladji, R., Nicolas, J.B., Bonnaire, N., Mustapha, M.A.,
519 Dilmi, R., Sciare, J., Mihalopoulos, N., Yassaa, N., 2020. Chemical characterization of
520 fine particles (PM_{2.5}) at a coastal site in the South Western Mediterranean during the

521 ChArMex experiment. *Environ. Sci. Pollut. Res.* 27, 20427–20445.
522 <https://doi.org/10.1007/s11356-020-08168-7>

523 Li, X., Ma, Y., Wang, Y., Liu, N., Hong, Y., 2017. Temporal and spatial analyses of
524 particulate matter (PM10 and PM2.5) and its relationship with meteorological
525 parameters over an urban city in northeast China. *Atmos. Res.* 198, 185–193.
526 <https://doi.org/10.1016/j.atmosres.2017.08.023>

527 Lindgren, F., Rue, H., 2015. Bayesian spatial modelling with R-INLA. *J. Stat. Softw.* 63,
528 1–25. <https://doi.org/10.18637/jss.v063.i19>

529 Liu, B., Sun, X., Zhang, J., Bi, X., Li, Y., Li, L., Dong, H., Xiao, Z., Zhang, Y., Feng, Y.,
530 2020. Characterization and Spatial Source Apportionments of Ambient PM10 and
531 PM2.5 during the Heating Period in Tian ' jin , China. *Aerosol Air Qual. Res.* 20, 1–
532 13. <https://doi.org/10.4209/aaqr.2019.06.0281>

533 Liu, C., Chen, R., Sera, F., Vicedo-Cabrera, A.M., Guo, Y., Tong, S., Coelho, M.S.Z.S.,
534 Saldiva, P.H.N., Lavigne, E., Matus, P., Ortega, N.V., Garcia, S.O., Pascal, M.,
535 Stafoggia, M., Scortichini, M., Hashizume, M., Honda, Y., Hurtado-Díaz, M., Cruz, J.,
536 Nunes, B., Teixeira, J.P., Kim, H., Tobias, A., Íñiguez, C., Forsberg, B., Åström, C.,
537 Ragettli, M.S., Guo, Y.L., Chen, B.Y., Bell, M.L., Wright, C.Y., Scovronick, N.,
538 Garland, R.M., Milojevic, A., Kyselý, J., Urban, A., Orru, H., Indermitte, E., Jaakkola,
539 J.J.K., Rytí, N.R.I., Katsouyanni, K., Analitis, A., Zanobetti, A., Schwartz, J., Chen, J.,
540 Wu, T., Cohen, A., Gasparri, A., Kan, H., 2019. Ambient particulate air pollution
541 and daily mortality in 652 cities. *N. Engl. J. Med.* 381, 705–715.
542 <https://doi.org/10.1056/NEJMoa1817364>

543 Lu, R., Zhao, X., Li, J., Niu, P., Yang, B., Wu, H., Wang, W., Song, H., Huang, B., Zhu,
544 N., Bi, Y., Ma, X., Zhan, F., Wang, L., Hu, T., Zhou, H., Hu, Z., Zhou, W., Zhao, L.,

545 Chen, J., Meng, Y., Wang, J., Lin, Y., Yuan, J., Xie, Z., Ma, J., Liu, W.J., Wang, D.,
546 Xu, W., Holmes, E.C., Gao, G.F., Wu, G., Chen, W., Shi, W., Tan, W., 2020.
547 Genomic characterisation and epidemiology of 2019 novel coronavirus: implications
548 for virus origins and receptor binding. *Lancet* 395, 565–574.
549 [https://doi.org/10.1016/S0140-6736\(20\)30251-8](https://doi.org/10.1016/S0140-6736(20)30251-8)

550 Ludecke, D., 2016. sjPlot: Data visualization for statistics in social science. R package
551 version 2.0.1, <https://CRAN.R-project.org/package=sjPlot>.

552 Mahato, S., Pal, S., Ghosh, K.G., 2020. Effect of lockdown amid COVID-19 pandemic on
553 air quality of the megacity Delhi, India. *Sci. Total Environ.* 730, 139086.
554 <https://doi.org/https://doi.org/10.1016/j.scitotenv.2020.139086>

555 Manisalidis, I., Stavropoulou, E., Stavropoulos, A., Bezirtzoglou, E., 2020. Environmental
556 and Health Impacts of Air Pollution: A Review. *Front. Public Heal.*
557 <https://doi.org/10.3389/fpubh.2020.00014>

558 Mao, J., Wang, L., Lu, C., Liu, J., Li, M., Tang, G., Ji, D., Zhang, N., Wang, Y., 2020.
559 Meteorological mechanism for a large-scale persistent severe ozone pollution event
560 over eastern China in 2017. *J. Environ. Sci.* 92, 187–199.
561 <https://doi.org/10.1016/j.jes.2020.02.019>

562 Mehmood, K., Saifullah, Iqbal, M., Abrar, M.M., 2020. Can exposure to PM2.5 particles
563 increase the incidence of coronavirus disease 2019 (COVID-19)? *Sci. Total Environ.*
564 <https://doi.org/10.1016/j.scitotenv.2020.140441>

565 Ministerio de Medio Ambiente y Medio Rural y Marino. AEMET, 2011. Atlas Climático
566 Ibérico Iberian Climate Atlas Gobierno De España.

567 Nicolás, J., Lucarelli, F., Galindo, N., Yubero, E., Crespo, J., Calzolari, G., Nava, S., 2020.
568 Impact of traffic flows and meteorological events on the hourly elemental composition

569 of fine and coarse particles at an urban site. *Aerosol Air Qual. Res.* 20, 991–1001.
570 <https://doi.org/10.4209/aaqr.2019.09.0437>

571 Querol, X., Alastuey, A., Pandolfi, M., Reche, C., Pérez, N., Minguillón, M.C., Moreno, T.,
572 Viana, M., Escudero, M., Orío, A., Pallarés, M., Reina, F., 2014. 2001-2012 trends on
573 air quality in Spain. *Sci. Total Environ.* 490, 957–969.
574 <https://doi.org/10.1016/j.scitotenv.2014.05.074>

575 Radzka, E., 2020. The Effect of Meteorological Conditions on Air Pollution in Siedlce. *J.*
576 *Ecol. Eng.* 21, 97–104. <https://doi.org/10.12911/22998993/113074>

577 Ren, L.-L., Wang, Y.-M., Wu, Z.-Q., Xiang, Z.-C., Guo, L., Xu, T., Jiang, Y.-Z., Xiong,
578 Y., Li, Y.-J., Li, X.-W., Li, H., Fan, G.-H., Gu, X.-Y., Xiao, Y., Gao, H., Xu, J.-Y.,
579 Yang, F., Wang, X.-M., Wu, C., Chen, L., Liu, Y.-W., Liu, B., Yang, J., Wang, X.-R.,
580 Dong, J., Li, L., Huang, C.-L., Zhao, J.-P., Hu, Y., Cheng, Z.-S., Liu, L.-L., Qian, Z.-
581 H., Qin, C., Jin, Q., Cao, B., Wang, J.-W., 2020. Identification of a novel coronavirus
582 causing severe pneumonia in human. *Chin. Med. J. (Engl.)*. 1.
583 <https://doi.org/10.1097/cm9.0000000000000722>

584 Rue, H., Martino, S., Chopin, N., 2009. Approximate Bayesian inference for latent
585 Gaussian models by using integrated nested Laplace approximations. *J. R. Stat. Soc.*
586 *Ser. B Stat. Methodol.* 71, 319–392. <https://doi.org/10.1111/j.1467-9868.2008.00700.x>

587 Sarkis, J., Cohen, M.J., Dewick, P., Schröder, P., 2020. A Brave New World: Lessons from
588 the COVID-19 Pandemic for Transitioning to Sustainable Supply and Production.
589 *Resour. Conserv. Recycl.* 104894. <https://doi.org/10.1016/j.resconrec.2020.104894>

590 Sedlmaier, N., Hoppenheidt, K., Krist, H., Lehmann, S., Lang, H., Büttner, M., 2009.
591 Generation of avian influenza virus (AIV) contaminated fecal fine particulate matter
592 (PM2.5): Genome and infectivity detection and calculation of immission. *Vet.*

593 Microbiol. 139, 156–164. <https://doi.org/10.1016/j.vetmic.2009.05.005>

594 Sharma, S., Zhang, M., Anshika, Gao, J., Zhang, H., Kota, S.H., 2020. Effect of restricted
595 emissions during COVID-19 on air quality in India. *Sci. Total Environ.* 728, 138878.
596 <https://doi.org/10.1016/j.scitotenv.2020.138878>

597 Shi, C., Yuan, R., Wu, B., Meng, Y., Zhang, Hao, Zhang, Hongqun, Gong, Z., 2018.
598 Meteorological conditions conducive to PM_{2.5} pollution in winter 2016/2017 in the
599 Western Yangtze River Delta, China. *Sci. Total Environ.* 642, 1221–1232.
600 <https://doi.org/10.1016/j.scitotenv.2018.06.137>

601 Team, R.C., 2020. R: A language and environment for statistical computing.

602 Tobías, A., 2020. Evaluation of the lockdowns for the SARS-CoV-2 epidemic in Italy and
603 Spain after one month follow up. *Sci. Total Environ.* 138539.
604 <https://doi.org/10.1016/j.scitotenv.2020.138539>

605 UK Department for Environment Food and Rural Affairs, n.d. Site environment types -
606 Defra, UK.

607 Venter, Z.S., Aunan, K., Chowdhury, S., Lelieveld, J., 2020. COVID-19 lockdowns cause
608 global air pollution declines with implications for public health risk Authors
609 Affiliations : ORCID : Key words : Introduction : medRxiv.
610 <https://doi.org/10.1101/2020.04.10.20060673>

611 Viana, M., Rizza, V., Tobías, A., Carr, E., Corbett, J., Sofiev, M., Karanasiou, A.,
612 Buonanno, G., Fann, N., 2020. Estimated health impacts from maritime transport in
613 the Mediterranean region and benefits from the use of cleaner fuels. *Environ. Int.* 138.
614 <https://doi.org/10.1016/j.envint.2020.105670>

615 Wang, P., Guo, H., Hu, J., Kota, S.H., Ying, Q., Zhang, H., 2019. Responses of PM_{2.5} and
616 O₃ concentrations to changes of meteorology and emissions in China. *Sci. Total*

617 Environ. 662, 297–306. <https://doi.org/10.1016/j.scitotenv.2019.01.227>

618 Wang, Pengfei, Chen, K., Zhu, S., Wang, Peng, Zhang, H., 2020. Severe air pollution
619 events not avoided by reduced anthropogenic activities during COVID-19 outbreak.
620 Resour. Conserv. Recycl. 158, 104814.
621 <https://doi.org/10.1016/j.resconrec.2020.104814>

622 WHO, 2020a. Director-General’s opening remarks at the media briefing on COVID-19 - 11
623 March 2020 [WWW Document]. URL [https://www.who.int/dg/speeches/detail/who-](https://www.who.int/dg/speeches/detail/who-director-general-s-opening-remarks-at-the-media-briefing-on-covid-19---11-march-2020)
624 [director-general-s-opening-remarks-at-the-media-briefing-on-covid-19---11-march-](https://www.who.int/dg/speeches/detail/who-director-general-s-opening-remarks-at-the-media-briefing-on-covid-19---11-march-2020)
625 [2020](https://www.who.int/dg/speeches/detail/who-director-general-s-opening-remarks-at-the-media-briefing-on-covid-19---11-march-2020)

626 WHO, 2020b. Coronavirus disease (COVID-19) Pandemic [WWW Document]. World
627 Heal. Organ. URL <https://www.who.int/emergencies/diseases/novel-coronavirus-2019>

628 Wickham, H., 2016. ggplot2: Elegant Graphics for Data Analysis. Springer-Verlag New
629 York.

630 World Health Organization, 2018. Ambient (outdoor) air pollution [WWW Document].
631 WHO. URL [https://www.who.int/news-room/fact-sheets/detail/ambient-\(outdoor\)-air-](https://www.who.int/news-room/fact-sheets/detail/ambient-(outdoor)-air-quality-and-health)
632 [quality-and-health](https://www.who.int/news-room/fact-sheets/detail/ambient-(outdoor)-air-quality-and-health)

633 Xiao, Y., Murray, J., Lenzen, M., 2018. International trade linked with disease burden from
634 airborne particulate pollution. Resour. Conserv. Recycl. 129, 1–11.
635 <https://doi.org/10.1016/j.resconrec.2017.10.002>

636 Xie, J., Teng, J., Fan, Y., Xie, R., Shen, A., 2019. The short-term effects of air pollutants on
637 hospitalizations for respiratory disease in Hefei, China. Int. J. Biometeorol. 63, 315–
638 326. <https://doi.org/10.1007/s00484-018-01665-y>

639 Xu, Q., Li, X., Wang, S., Wang, C., Huang, F., Gao, Q., Wu, L., Tao, L., Guo, J., Wang,
640 W., Guo, X., 2016. Fine particulate air pollution and hospital emergency room visits

641 for respiratory disease in urban areas in Beijing, China, in 2013. PLoS One 11,
642 e0153099. <https://doi.org/10.1371/journal.pone.0153099>

643 Xu, Y., Yang, L., Wang, X., Zheng, M., Li, C., Zhang, A., 2020. Risk evaluation of
644 environmentally persistent free radicals in airborne particulate matter and influence
645 of atmospheric factors. *Ecotoxicol. Environ. Saf.* 196, 110571.
646 <https://doi.org/10.1016/j.ecoenv.2020.110571>

647 Xunta de Galicia, 2020. Calidade do Aire de Galicia [WWW Document]. URL
648 <https://www.meteogalicia.gal/Caire/index.action>

649 Yousefian, F., Faridi, S., Azimi, F., Aghaei, M., Shamsipour, M., 2020. Temporal
650 variations of ambient air pollutants and meteorological influences on their
651 concentrations in Tehran during 2012 – 2017. *Sci. Rep.* 10, 292.
652 <https://doi.org/10.1038/s41598-019-56578-6>

653 Zhu, Y., Xie, J., Huang, F., Cao, L., 2020. Association between short-term exposure to air
654 pollution and COVID-19 infection: Evidence from China. *Sci. Total Environ.* 727,
655 138704. <https://doi.org/10.1016/j.scitotenv.2020.138704>

656 Zoran, M.A., Savastru, R.S., Savastru, D.M., Tautan, M.N., 2020. Assessing the
657 relationship between surface levels of PM_{2.5} and PM₁₀ particulate matter impact on
658 COVID-19 in Milan, Italy. *Sci. Total Environ.* 738, 139825.
659 <https://doi.org/10.1016/j.scitotenv.2020.139825>

660