

Association between Abnormal Fetal Head Growth and Autism Spectrum Disorder

Ohad Regev^{1,2}, MD, PhD Candidate; Gal Cohen¹, MD Candidate; Amnon Hadar^{3,4}, MD; Jenny Schuster³, BA, MBA; Hagit Flusser^{5,6}, MD; Analya Michaelovski^{5,6}, MD; Gal Meiri^{5,7}, MD; Ilan Dinstein^{2,6,8}, PhD; Reli HersHKovitch⁴, MD; and Idan Menashe^{1,2,6}, PhD.

¹ Department of Public Health, Ben-Gurion University of the Negev, Beer-Sheva, Israel;

² Zlotowski Center for Neuroscience, Ben-Gurion University of the Negev, Beer-Sheva, Israel;

³ Clalit Health Services, Beer-Sheva, Israel;

⁴ Division of Obstetrics and Gynecology, Soroka University Medical Center, Beer-Sheva, Israel;

⁵ Child Development Center, Soroka University Medical Center, Beer-Sheva, Israel;

⁶ National Autism Research Center of Israel, Ben-Gurion University of the Negev, Beer-Sheva, Israel; ⁷ Preschool Psychiatric Unit, Soroka University Medical Center, Beer-Sheva, Israel;

⁸ Department of Psychology, Ben-Gurion University of the Negev, Beer-Sheva, Israel.

Corresponding Author:

Idan Menashe, PhD

Department of Public Health, Faculty of Health Sciences,

Ben-Gurion University of the Negev, Beer-Sheva 8410501, Israel

idanmen@bgu.ac.il

Keywords: Autism Spectrum Disorder, Prenatal Ultrasound, Head Growth, Fetal development

Abstract

Background: Despite evidence for the prenatal onset of abnormal head growth in ASD children, studies on fetal ultrasound data in ASD are limited and controversial.

Methods: A longitudinal matched case-sibling-control study on prenatal ultrasound biometric measures of ASD children was conducted. Children with ASD were matched to two control groups: (1) *typically developed sibling* (TDS) and (2) *typically developed population* (TDP). The cohort comprised 528 children (72.7% males): 174 ASD, 178 TDS, and 176 TDP.

Results: Second-trimester ASD and TDS fetuses had significantly smaller biparietal diameter (BPD) than TDP fetuses ($aOR_{zBPD}=0.685$, 95% CI=0.527-0.890 and $aOR_{zBPD}=0.587$, 95% CI=0.459-0.751, respectively). However, these differences became statistically indistinguishable in the third trimester. Head biometric measures were associated with the sex of the fetus, with males having larger heads than females within and across groups. A linear mixed-effect model assessing the effects of sex and group assignment on fetal longitudinal head growth indicated faster BPD growth in TDS vs both ASD and TDP in males ($\beta=0.084$ and $\beta=0.100$ respectively; $p<0.001$) but not in females, suggesting an ASD–sex interaction in head growth during gestation. Fetal head shape showed sex-specific characteristics, and head growth was inversely correlated with ASD severity in males and females, thus further supporting the sex effect on the association between fetal head growth and ASD.

Conclusions: Our findings suggest that abnormal fetal head growth is a familial trait of ASD, which is modulated by sex and is associated with the severity of the disorder. Thus, it could serve as an early biomarker for ASD.

Introduction

Autism spectrum disorder (ASD) is a life-long neurodevelopmental disorder with a complex etiology having both genetic and environmental determinants.^{1,2} The wide range of pre- and perinatal risk factors,^{3,4} together with the abnormalities in early brain development associated with ASD,⁵⁻⁹ suggest that, at least in some cases, the predisposition to ASD begins during gestation.

Abnormal head growth has been proposed as an early biomarker for ASD. Specifically, various MRI, postmortem, and head measurement studies have reported that infants who later developed ASD were born with a smaller or average head circumference (HC), followed by an excessive increase during the first years of life in head size, in extra-axial cerebrospinal fluid (CSF) volume, and in brain regions associated with the language, social, emotional and communication functions affected by ASD.^{7,8,10-18} These studies also reported correlations between clinical severity to postnatal head size, brain morphometry and extra-axial CSF volume.^{10,15,19,20}

Importantly, some of these head growth abnormalities have been associated with sex, an interesting finding since males are known to have higher risk for ASD.²¹ Several postnatal studies have found sex-specific neuroanatomical profiles in ASD children compared to sex-matched controls. Among these investigations, a large population-based study revealed sex-specific differences in HC at birth and throughout early childhood in children with ASD.¹⁸ Similarly, MRI studies found sex-specific differences in total brain volume (in gray and white matter volume of the frontal and temporal lobes, cingulate cortex, amygdala, and cerebellum), alongside different and abnormal growth trajectories throughout childhood.^{14,16,20,22-24} These studies also showed sex-specific correlations between specific brain regions and the clinical severity of ASD.²⁰

Previous postnatal studies suggested that the accelerated head growth among ASD children during early childhood may be a reaction or an adaptation to abnormal prenatal head growth. This assertion is supported by an emerging ASD prenatal literature covering developmental abnormalities in certain fetal ultrasound (US) parameters,^{25,26} and specifically in biometric measures.²⁷⁻³¹ Nevertheless, these studies showed conflicting results. Two studies found indications for either wider heads with normal HC in ASD children compared to typically developed population (TDP) controls²⁷ or larger HC with normal shape compared to population

norm.²⁸ In contrast, the other three studies showed contradicting results, with one not finding any association between HC and ASD²⁹ and the other two showing possible association between smaller HC to ASD and autistic traits.^{30,31} In addition, the reported studies were conducted on relatively small cohorts and did not account for potential confounders, e.g., none took into consideration familial factors known to play a significant role in fetal growth³² and/or to constitute a risk for ASD.³³ Similarly, several studies did not take into account the inherent male sex bias in ASD, even though boys are known to have larger biometric measures.³⁴ Thus, conclusions regarding fetal head growth in children with ASD remain minimal, inconsistent and controversial. In this study, the largest and most comprehensive on the subject to date, we examined the sex-specific association between fetal head growth and both ASD risk and ASD clinical severity.

Methods

Study Sample

The participants in this case/control study were singletons whose families were members of Clalit Health Services (CHS), Israel's largest health maintenance organization, serving about 75% of the approximately 700,000 residents of southern Israel. Members of CHS in this region receive most of their hospital-related services (including the diagnosis of ASD) at the Soroka University Medical Center (SUMC), the region's only tertiary hospital. The diagnosis of ASD at SUMC entails a comprehensive intake interview (clinical and socio-demographic factors), a behavioral evaluation with ADOS-2,³⁵ and a full neurocognitive assessment (e.g., Bayley-III³⁶ or WPPSI-III³⁷). Diagnoses of ASD (and other developmental disorders) are made by a pediatric psychiatrist or neurologist, according to DSM-5 criteria.²¹ All sociodemographic and clinical data on these children are stored in the database of the National Autism Research Center of Israel (NARC).³⁸

A flowchart showing the case/control assignment for this study is presented in **Figure 1**. We randomly selected from the NARC database 386 of the 719 children diagnosed with ASD (53.7%). Among these 386 cases, we identified those for whom there were prenatal US scans in the CHS database. The 212 children (54.9%) for whom US scans were missing were excluded from the study, leaving us with a sample of 174

cases, born between 2008-2017. There were no significant sociodemographic or clinical differences between this sample and other children with ASD in the NARC database, except that the proportion of Jews (vs. Bedouin Israelis) was slightly lower for children included in the study, as was the parental age (**Table S1 in the Supplement**).

Of the 174 cases included in the study, 85 had US scans from both the second and third trimesters, while 51 and 38 had scans from only the second or the third trimester, respectively. For each trimester, we matched two types of control group for cases: (1) *typically developing siblings (TDS)* - for each ASD case, we selected the typically developed sibling who was closest in age; and (2) *typically developed population (TDP)* - for each case, we identified a typically-developed child matched by year of birth, sex and ethnicity. In total, the study sample included 528 children: 174 with ASD, 178 TDS, and 176 TDP (**Figure 1**).

Fetal Ultrasound Data

All the US scans had been performed by experienced sonographers or physicians that recorded fetal biometric measures using standardized US measurements of simple anatomic landmarks to the nearest millimeter. The following biometric measures were extracted from the CHS database for each trimester: HC and head width (BPD, biparietal diameter), i.e., two biometric measures that strongly correlate with brain size;^{39,40} abdominal circumference (AC); and femur length (FL). HC was measured at the level of the BPD, taken at the widest point of the skull at the level of the thalamic peduncles and the cavum septum pellucidum; BPD was measured from outer skull wall to the inner wall directly opposite; AC was measured at the level of the junction of the vertebra, portal sinus, and fetal stomach; and FL was measured from the greater trochanter to the distal metaphysis.^{27,41,42} It is known that for these US measurements there is very high inter-rater reliability between experienced sonographers, particularly during the first two trimesters of pregnancy.^{27,30} Gestational age (GA) of each child was calculated from the last menstrual period (LMP) and confirmed by the crown-rump length (CRL) from the first trimester. If the date of LMP was unknown, GA was calculated based on CRL.

Statistical Analysis

We converted all biometric fetal measures to gestation-matched standardized Z-scores using the Hadlock approach,⁴²⁻⁴⁵ the most widely used standardization approach in this field. In addition, we created five new variables by subtracting body parameter (AC and FL) Z-scores from head parameter (HC and BPD) Z-scores and by subtracting the HC Z-scores from the BPD Z-scores to assess fetal head growth relative to the other biometric measures.^{27,29} If there was more than one US measure for a child in a particular trimester, we used the mean of its standardized measures as a representative measure. Notably, biometric measures with Z-scores $> \pm 6$ or that deviated by > 3 SD from the average for that trimester were considered outliers and removed from further analyses.

Differences in sociodemographic characteristics between cases and the two control groups were assessed by using the appropriate univariate statistics. Differences in biometric measures between cases and each of the two matched control groups (TDS and TDP) were assessed using paired t-tests and multivariable conditional regression adjusting for sex and maternal age. Differences in biometric measures between the two matched control groups were assessed via unpaired t-tests and multivariable unconditional logistic regression adjusting for sex, maternal age and ethnicity. P-values for these comparisons were adjusted for multiple testing using the Bonferroni correction. A linear mixed effect model was used to assess the sex-specific interaction between fetal growth rate (measured as the difference in biometric measures throughout pregnancy) and ASD diagnosis, taking into account repeated measures and ethnicity.³⁰ Lastly, correlation coefficients were calculated between biometric measures and various measures of ASD severity in cases.

All analyses were conducted using SPSS Statistics V. 25 and R software. A two-sided test significance level of 0.05 was used throughout the entire study.

Ethics Statement

The study was approved by the SUMC Ethics Committee per the Helsinki declaration SOR 295-18. Importantly, to protect patient confidentiality, all US data were 'de-identified' manner (i.e., without the mother's ID or name, or any other identifiable information about the mother or the child).

Results

Sociodemographic and Clinical Characteristics

Clinical and sociodemographic characteristics of the study sample are shown in **Table 1**. As expected, the sex ratio for the TDS group was significantly different from that for the ASD group, close to 1:1 vs 4:1 male/female, respectively ($p < 0.001$). Children in the TDP group were significantly heavier at birth and were born approximately 3.5 days later than those in the ASD group (3324 ± 523 vs. 3174 ± 579 g; $p = 0.026$ and 39.3 ± 1.4 vs. 38.8 ± 2.5 weeks; $p = 0.082$, respectively). In addition, for the TDP group, US scans were performed earlier in the second trimester compared to cases (21.4 ± 2.8 vs. 22.3 ± 1.8 weeks, respectively; $p = 0.003$). No other statistically significant differences were seen between cases and controls.

Biometric Measures

Differences in fetal US biometric measures between cases and controls are shown in **Table 2** and **Figures S1&S2 in the Supplement**. In the second trimester, both ASD and TDS fetuses had significantly narrower heads (smaller BPD) than TDP fetuses ($aOR_{zBPD} = 0.685$, 95%CI=0.527-0.890 and $aOR_{zBPD} = 0.587$, 95%CI=0.459-0.751, respectively), giving the head a dolichocephalic shape. Interestingly, the BPD of the TDS controls was the smallest of all groups, leading to a smaller HC, which was also significantly smaller than the HC for the TDP group ($aOR_{zHC} = 0.598$, 95%CI=0.426-0.838). The heads of ASD and TDS fetuses were also proportionally smaller vs other body parts compared to TDP fetuses (**Table 2**), indicating that these differences are specific to the head and are not due to differences in fetal growth or fetal age. By the third trimester, these differences in biometric measures between groups had attenuated and had become statistically indistinguishable, although the BPD of the ASD fetuses had become the smallest of all groups (**Table 2**).

To verify that our results were not biased by the different samples in the two trimesters (**Figure 1**), we repeated these analyses in a subsample containing only subjects with US biometric data from both trimesters. The repeat analysis confirmed the above findings, with some differences in head size between ASD and TDP becoming even clearer in this subsample (**Table S2 in the Supplement**).

Head biometric measures were consistently smaller for females than males within and across groups (**Figure 2; Table S3, Figures S1&S2 in the Supplement**), indicating a significant sex effect in fetal growth measures. Therefore, we reevaluated the group differences in biometric measures separately for males and females (**Table S4 in the Supplement**). In the second trimester, the BPD in both ASD and TDS males was significantly smaller compared to TDP, but no such differences were seen in HC measures. As a result, ASD and TDS males had narrower and more elongated heads compared to TDP males ($z_{BPD-zHC} = -0.271 \pm 1.04$; $p = 0.027$ and $z_{BPD-zHC} = -0.539 \pm 1.08$; $p < 0.001$ for ASD-TDP and TDS-TDP, respectively). In the third trimester, the differences in head size and shape were attenuated and became statistically insignificant. In females, HC and BPD were proportionally smaller in ASD and TDS compared to TDP in both pregnancy trimesters, thus suggesting that such head shape abnormality (narrower and elongated) during mid gestation is an exclusive characteristic of males in ASD families.

Longitudinal Growth

For approximately half the ASD fetuses and one-third of the controls there were biometric measures for both the second and third trimesters (**Figure 1**). These data allowed us to examine differential rates of organ growth during pregnancy (**Figure 2; Table S5 in the Supplement**). Head width (z_{BPD}) showed the most considerable growth compared to other body parts in both cases and controls and in both males and females. However, TDS males exhibited significantly faster BPD growth than both ASD and TDP males ($\beta = 0.084$ and $\beta = 0.100$ respectively; $p < 0.001$). As a result, the gap between the TDS and TDP groups in the second trimester closed in the third trimester, making the head width of male fetuses later diagnosed with ASD smaller in the third trimester vs both control groups.

Association with ASD Phenotypes

Finally, we examined whether fetal biometric measures were associated with the severity of ASD symptoms (**Figure 3**). In second-trimester males, head-to-body ratios were positively correlated with more severe ASD symptoms, according to both DSM5 domains (i.e., social and restrictive repetitive domains) (**Figure 3A**). The same trend was seen in the third trimester, although the correlations were slightly attenuated (**Figure 3B**). In females, however, different trends were seen between the two trimesters. In the second trimester, most

biometric measures were positively correlated with ASD severity (**Figure 3C**), while in the third trimester, they were inversely correlated with symptom severity (**Figure 3D**). These contrasting correlations suggest that rapid fetal growth in females but not in males, during the second half of the pregnancy is associated with more severe ASD outcomes.

Discussion

This is the largest and most comprehensive study to date to examine the association between fetal growth parameters and ASD. Three main findings (discussed in detail below) emerged from this study. First, fetuses later diagnosed with ASD and their TDS have narrower heads during mid-gestation compared to TDP, thus suggesting that such fetal head growth abnormality is a familial trait of ASD. Second, ASD-related head growth abnormalities are modulated by the sex of the fetus, with males and females showing different head shapes during gestation. Third, fetal head anomalies appear to be associated with the severity of ASD.

The abnormal fetal head growth associated with ASD that we report in this study suggests that brain abnormalities associated with ASD begin during gestation. Additional support for abnormal brain development in fetuses later diagnosed with ASD may be drawn from postmortem studies that found clues of aberrant neuronal migration during early prenatal brain development in the prefrontal and temporal cortical tissue, alongside evidence of curtailment of maturation of the forebrain limbic system and abnormalities in the cerebellar circuits, all of which are brain regions held to be affected ASD.^{5,6,8,9} In addition, two postnatal MRI studies in preterm infants indicated structural brain asymmetry and reduced brain volume in preterm fetuses later diagnosed with ASD, again suggesting that abnormal head growth begins early in prenatal life.^{46,47} At last, a recent MRI study found a 15% increase of extra-axial CSF volume among ASD children during early childhood.¹⁰ This increase is categorised as benign external hydrocephalus, characterized by increased CSF mainly above the frontal lobes, and is suggested to accrue due to delayed maturation of arachnoid granulations which leads to an imbalance between the production and absorption of CSF.⁴⁸ Our finding of a narrow and elongated head among ASD males is consistent with this findings, and may suggest the increase

of CSF above the frontal lobes may begin during prenatal life due to the delayed maturation of arachnoid granulations, leading to the abnormal and elongated head shape.

Our findings suggest that abnormalities in the fetal head during gestation that are later associated with ASD is a familial trait. Support for this premise can be drawn both from a prospective study showing a trend towards smaller fetal heads in families with ASD compared to fetuses from families without ASD³⁰ and from a study that found an association between smaller HC and various autistic traits³¹, which are more prevalent in ASD families.⁴⁹ Additional support comes from genetic studies suggesting that HC is highly heritable⁵⁰ and that genetic variations associated with HC are also associated with risk of ASD.⁵¹ Another indication of a familial link between abnormal fetal head growth and risk of ASD lies in some maternal endocrine functions during pregnancy that have been associated with both of these traits.^{52,53} Interestingly, fetuses of our TDS group demonstrated accelerated head growth during late gestation to compensate for their relatively smaller heads. Similar accelerated head growth in early infancy has been reported in ASD children who were born with either normal or smaller heads,^{7,11-15} providing another familial trait of head growth abnormality associated with ASD.

Our findings also suggest that ASD is associated with different prenatal head growth abnormalities in males and females. Similar sex-specific head size abnormalities were seen in a large population-based study at birth and throughout early childhood in children with ASD.¹⁸ In addition, differences in total brain volume, and in gray and white matter volumes in different brain regions were seen throughout childhood in boys and girls with ASD.^{14,16,18,20,22-24} Furthermore, our study suggests that the observed sex-specific prenatal head growth abnormalities in fetuses later diagnosed with ASD are differently correlated with symptom severity in both sexes. This finding is consistent with previous postnatal studies that reported correlations between postnatal head size, brain morphometry, and extra-axial CSF volume on the one hand, to behavioral development, IQ,¹⁹ social deficits,¹⁵ sleep disturbances, lower non-verbal ability, poorer motor ability,¹⁰ and ADOS scores,²⁰ on the other. We therefore suggest that postnatal sex-specific differences in ASD severity that are correlated with different brain areas may begin in utero.

Our study has several advantages over previous investigations of prenatal US data of children with ASD. The use of two distinct control groups, TDS and TDP, enabled us to adjust our findings to multiple familial and prenatal confounders that are known to have a considerable effect on both ASD risk and fetal growth (e.g., sex^{21,34}, shared genetics among siblings^{1,2,32,33}), making our findings more compelling. In this context, previous findings suggesting larger heads in ASD fetuses^{27,28} may be attributed to the bias resulting from the large proportion of males (~90% in both), for which biometric measures are usually larger,³⁴ Another important advantage of our study is the availability of longitudinal biometric measures from both second and third trimesters for a significant portion of our sample, thus allowing us to account for sampling bias between the two pregnancy periods and to investigate prenatal growth trajectories of these biometric measures in ASD and the two control groups. Finally, this study is the first to examine correlations between prenatal US measures and ASD clinical metrics, allowing us to understand the associations between fetal growth and ASD severity.

Our study has several limitations. First, the sample size of the study, despite being the largest of its kind to date, is still too small to address associations within subgroups. As such, we were unable to reach statistical significance for the findings in females, who comprised only ~20% of the cases due to the inherent male bias of ASD.²¹ The same limitation applied to the longitudinal analysis and to some of the ASD severity measures that were available only for subsets of our sample. Finally, we had only limited data about potential birth and pregnancy confounding factors for subjects in our study. Nonetheless, the comparison of cases to both TDS and TDP control groups probably minimized the effect of such confounders.

Conclusions

Our findings suggest that abnormal fetal head growth is a familial trait of ASD, which is modulated by sex and is associated with the severity of the disorder. Thus, it could serve as an early biomarker for ASD. Integration of our findings with fetal brain research will shed important light on neuroanatomical embryonic milestones in ASD development.

Acknowledgements

This study was supported by a grant from the Israeli Science Foundation (527/15).

This study was conducted as part of the requirements to obtain a degree in medicine from the Joyce & Irving Goldman Medical School, Faculty of Health Sciences, Ben-Gurion University of the Negev.

We thank Mrs. Inez Mureink and Prof. Norm O'Rourke for critical reviewing and editing of the manuscript.

Disclosures

The authors report no biomedical financial interests or potential conflicts of interest.

References:

- 1 Kim YS, Leventhal BL. Genetic Epidemiology and Insights into Interactive Genetic and Environmental Effects in Autism Spectrum Disorders. *Biol Psychiatry* 2015; **77**: 66–74.
- 2 Lyall K, Croen L, Daniels J, *et al.* The Changing Epidemiology of Autism Spectrum Disorders. *Annu Rev Public Health* 2017; **38**: 81–102.
- 3 Wang C, Geng H, Liu W, Zhang G. Prenatal, perinatal, and postnatal factors associated with autism. *Medicine (Baltimore)* 2017; **96**: e6696.
- 4 Ornoy A, Weinstein-Fudim L, Ergaz Z. Prenatal factors associated with autism spectrum disorder (ASD). *Reprod Toxicol* 2015; **56**: 155–69.
- 5 Stoner R, Chow ML, Boyle MP, *et al.* Patches of Disorganization in the Neocortex of Children with Autism. *N Engl J Med* 2014; **370**: 1209–19.
- 6 Kemper TL, Bauman M. Neuropathology of Infantile Autism. *J Neuropathol Exp Neurol* 1998; **57**: 645–52.

- 7 Courchesne E, Campbell K, Solso S. Brain growth across the life span in autism: Age-specific changes in anatomical pathology. *Brain Res* 2011; **1380**: 138–45.
- 8 Courchesne E, Mouton PR, Calhoun ME, *et al.* Neuron Number and Size in Prefrontal Cortex of Children With Autism. *JAMA* 2011; **306**: 2001.
- 9 Casanova MF, van Kooten IAJ, Switala AE, *et al.* Minicolumnar abnormalities in autism. *Acta Neuropathol* 2006; **112**: 287–303.
- 10 Shen MD, Nordahl CW, Li DD, *et al.* Extra-axial cerebrospinal fluid in high-risk and normal-risk children with autism aged 2–4 years: a case-control study. *The Lancet Psychiatry* 2018; **5**: 895–904.
- 11 Redcay E, Courchesne E. When Is the Brain Enlarged in Autism? A Meta-Analysis of All Brain Size Reports. *Biol Psychiatry* 2005; **58**: 1–9.
- 12 Courchesne E. Evidence of Brain Overgrowth in the First Year of Life in Autism. *JAMA* 2003; **290**: 337.
- 13 Hazlett HC, Poe M, Gerig G, *et al.* Magnetic Resonance Imaging and Head Circumference Study of Brain Size in Autism. *Arch Gen Psychiatry* 2005; **62**: 1366.
- 14 Schumann CM, Bloss CS, Barnes CC, *et al.* Longitudinal Magnetic Resonance Imaging Study of Cortical Development through Early Childhood in Autism. *J Neurosci* 2010; **30**: 4419–27.
- 15 Hazlett HC, Gu H, Munsell BC, *et al.* Early brain development in infants at high risk for autism spectrum disorder. *Nature* 2017; **542**: 348–51.
- 16 Piven J, Arndt S, Bailey J, Andreasen N. Regional Brain Enlargement in Autism: A Magnetic Resonance Imaging Study. *J Am Acad Child Adolesc Psychiatry* 1996; **35**: 530–6.
- 17 Brambilla P, Hardan A, di Nemi SU, Perez J, Soares JC, Barale F. Brain anatomy and development in autism: review of structural MRI studies. *Brain Res Bull* 2003; **61**: 557–69.
- 18 Surén P, Stoltenberg C, Bresnahan M, *et al.* Early Growth Patterns in Children with Autism. *Epidemiology* 2013; **24**: 660–70.
- 19 Deutsch CK, Joseph RM. Brief report: cognitive correlates of enlarged head circumference in children

- with autism. *J Autism Dev Disord* 2003; **33**: 209–15.
- 20 Bedford SA, Park MTM, Devenyi GA, *et al.* Large-scale analyses of the relationship between sex, age and intelligence quotient heterogeneity and cortical morphometry in autism spectrum disorder. *Mol Psychiatry* 2020; **25**: 614–28.
- 21 Battle DE. Diagnostic and Statistical Manual of Mental Disorders (DSM). *CoDAS* 2013; **25**: 191–2.
- 22 Bloss CS, Courchesne E. MRI Neuroanatomy in Young Girls With Autism. *J Am Acad Child Adolesc Psychiatry* 2007; **46**: 515–23.
- 23 Schumann CM, Barnes CC, Lord C, Courchesne E. Amygdala Enlargement in Toddlers with Autism Related to Severity of Social and Communication Impairments. *Biol Psychiatry* 2009; **66**: 942–9.
- 24 Ecker C, Andrews DS, Gudbrandsen CM, *et al.* Association Between the Probability of Autism Spectrum Disorder and Normative Sex-Related Phenotypic Diversity in Brain Structure. *JAMA Psychiatry* 2017; **74**: 329.
- 25 Fulceri F, Guzzetta A, Athanasiadou A, Iaconianni L, Scattoni ML. Antenatal ultrasound value in risk calculation for Autism Spectrum Disorder: A systematic review to support future research. *Neurosci Biobehav Rev* 2018; **92**: 83–92.
- 26 Gamliel M, Ebstein R, Yirmiya N, Mankuta D. Minor Fetal Sonographic Findings in Autism Spectrum Disorder. *Obstet Gynecol Surv* 2012; **67**: 176–86.
- 27 Hobbs K, Kennedy A, DuBray M, *et al.* A Retrospective Fetal Ultrasound Study of Brain Size in Autism. *Biol Psychiatry* 2007; **62**: 1048–55.
- 28 Bonnet-Brilhault F, Rajerison TA, Paillet C, *et al.* Autism is a prenatal disorder: Evidence from late gestation brain overgrowth. *Autism Res* 2018; **11**: 1635–42.
- 29 Whitehouse AJO, Hickey M, Stanley FJ, Newnham JP, Pennell CE. Brief Report: A Preliminary Study of Fetal Head Circumference Growth in Autism Spectrum Disorder. *J Autism Dev Disord* 2011; **41**: 122–9.
- 30 Unwin LM, Maybery MT, Murphy A, *et al.* A Prospective Ultrasound Study of Prenatal Growth in

- Infant Siblings of Children With Autism. *Autism Res* 2016; **9**: 210–6.
- 31 Blanken LME, Dass A, Alvares G, *et al.* A prospective study of fetal head growth, autistic traits and autism spectrum disorder. *Autism Res* 2018; **11**: 602–12.
- 32 La Batide-Alanore A. Familial Aggregation of Fetal Growth Restriction in a French Cohort of 7,822 Term Births between 1971 and 1985. *Am J Epidemiol* 2002; **156**: 180–7.
- 33 Sandin S, Lichtenstein P, Kuja-Halkola R, Larsson H, Hultman CM, Reichenberg A. The Familial Risk of Autism. *JAMA* 2014; **311**: 1770.
- 34 Schwärzler P, Bland JM, Holden D, Campbell S, Ville Y. Sex-specific antenatal reference growth charts for uncomplicated singleton pregnancies at 15–40 weeks of gestation. *Ultrasound Obstet Gynecol* 2004; **23**: 23–9.
- 35 Lord C, Risi S, Lambrecht L, *et al.* The autism diagnostic observation schedule-generic: a standard measure of social and communication deficits associated with the spectrum of autism. *J Autism Dev Disord* 2000; **30**: 205–23.
- 36 Albers CA, Grieve AJ. Test Review: Bayley, N. (2006). Bayley Scales of Infant and Toddler Development– Third Edition. San Antonio, TX: Harcourt Assessment. *J Psychoeduc Assess* 2007; **25**: 180–90.
- 37 Warschausky S, Raiford SE. Wechsler Preschool and Primary Scale of Intelligence. In: Encyclopedia of Clinical Neuropsychology. Cham: Springer International Publishing, 2018: 3705–9.
- 38 Meiri G, Dinstein I, Michaelowski A, *et al.* Brief Report: The Negev Hospital-University-Based (HUB) Autism Database. *J Autism Dev Disord* 2017; **47**: 2918–26.
- 39 Endres LK, Cohen L. Reliability and validity of three-dimensional fetal brain volumes. *J Ultrasound Med* 2001; **20**: 1265–9.
- 40 Bartholomeusz HH, Courchesne E, Karns CM. Relationship Between Head Circumference and Brain Volume in Healthy Normal Toddlers, Children, and Adults. *Neuropediatrics* 2002; **33**: 239–41.
- 41 American Institute of Ultrasound in Medicine. AIUM Practice Guideline for the Performance of an

- Antepartum Obstetric Ultrasound Examination. *J Ultrasound Med* 2003; **22**: 1116–25.
- 42 Hadlock FP, Deter RL, Harrist RB, Park SK. Estimating fetal age: computer-assisted analysis of multiple fetal growth parameters. *Radiology* 1984; **152**: 497–501.
- 43 Hadlock F, Deter R, Harrist R, Park S. Fetal abdominal circumference as a predictor of menstrual age. *Am J Roentgenol* 1982; **139**: 367–70.
- 44 Hadlock FP, Deter RL, Harrist RB, Park SK. Fetal biparietal diameter: a critical re-evaluation of the relation to menstrual age by means of real-time ultrasound. *J Ultrasound Med* 1982; **1**: 97–104.
- 45 Hadlock F, Deter R, Harrist R, Park S. Fetal head circumference: relation to menstrual age. *Am J Roentgenol* 1982; **138**: 649–53.
- 46 Eklöf E, Mårtensson GE, Ådén U, Padilla N. Reduced structural brain asymmetry during neonatal life is potentially related to autism spectrum disorders in children born extremely preterm. *Autism Res* 2019; **12**: 1334–43.
- 47 Padilla N, Eklöf E, Mårtensson GE, Bölte S, Lagercrantz H, Ådén U. Poor Brain Growth in Extremely Preterm Neonates Long Before the Onset of Autism Spectrum Disorder Symptoms. *Cereb Cortex* 2015; : bhv300.
- 48 Dinstein I, Shelef I. Anatomical brain abnormalities and early detection of autism. *The Lancet Psychiatry* 2018; **5**: 857–9.
- 49 Hoekstra RA, Bartels M, Verweij CJH, Boomsma DI. Heritability of Autistic Traits in the General Population. *Arch Pediatr Adolesc Med* 2007; **161**: 372.
- 50 Chaste P, Klei L, Sanders SJ, *et al.* Adjusting head circumference for covariates in autism: Clinical correlates of a highly heritable continuous trait. *Biol Psychiatry* 2013.
DOI:10.1016/j.biopsych.2013.04.018.
- 51 Wu H, Li H, Bai T, *et al.* Phenotype-to-genotype approach reveals head-circumference-associated genes in an autism spectrum disorder cohort. *Clin Genet* 2020; **97**: 338–46.
- 52 Korevaar TIM, Muetzel R, Medici M, *et al.* Association of maternal thyroid function during early

pregnancy with offspring IQ and brain morphology in childhood: a population-based prospective cohort study. *Lancet Diabetes Endocrinol* 2016; **4**: 35–43.

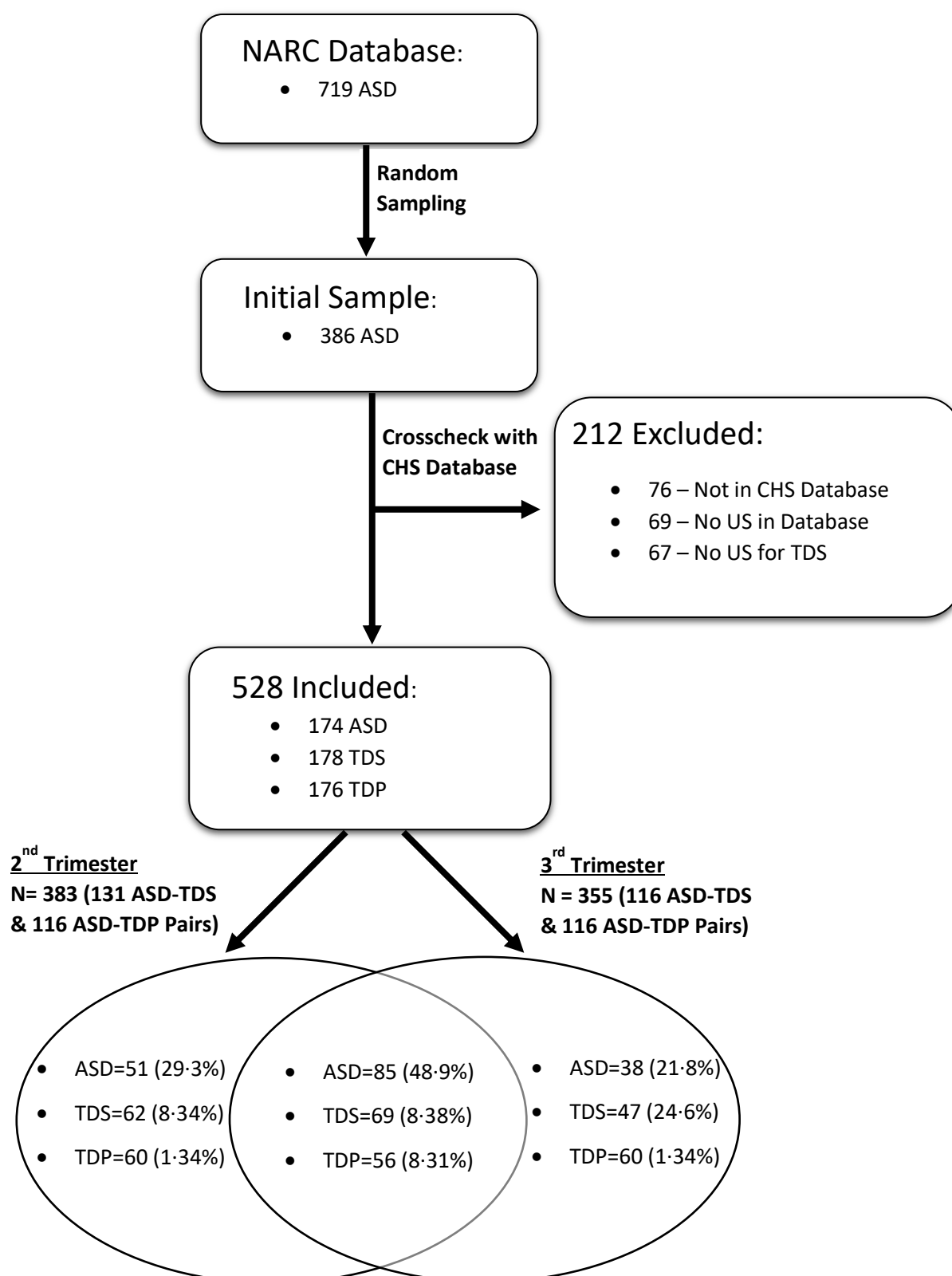
- 53 Whitehouse AJO, Holt BJ, Serralha M, Holt PG, Hart PH, Kusel MMH. Maternal Vitamin D Levels and the Autism Phenotype Among Offspring. *J Autism Dev Disord* 2013; **43**: 1495–504.

Figure legends

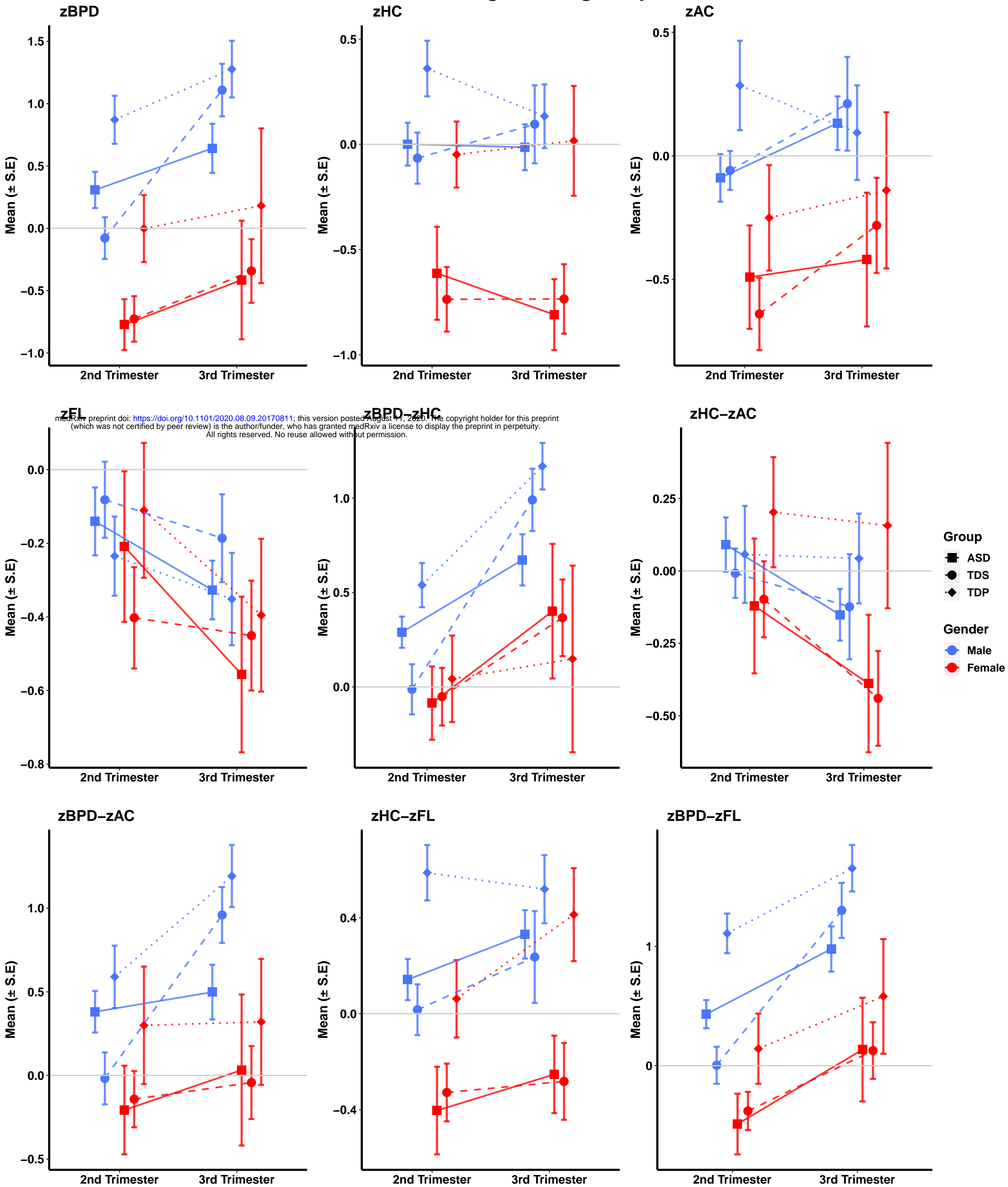
Figure 1: Flowchart of children included in this study.

Figure 2: Changes in biometric measures between second and third trimesters. The mean and SE of different biometric measures are shown for males (blue) and females (red) in the three study groups: ASD (squares), TDS (circles) and TDP (diamonds). A steeper line between the two trimesters indicates a faster growth rate between the two trimesters.

Figure 3: Correlation between ASD Severity and Fetal Biometric Measures in the Second and Third Trimesters of pregnancy in Males and Females. Pearson correlation coefficients (R) are color coded, with asterisks indicating statistically significant correlations: * P-value<0.05, ** P-value≤0.01. For all tests, a positive R means a larger biometric measure is correlated with worse outcome of specific clinical test, as follows: DSM5-B: Restrictive-Repetitive Domain has a range of three values (1) Requiring Support, (2) Requiring Substantial Support, (3) Requiring Very Substantial Support. A higher score means a worse outcome. DSM5-A: Social Domain has a range of three values (1) Requiring Support, (2) Requiring Substantial Support, (3) Requiring Very Substantial Support. A higher score means worse outcome. ADOS: A higher score means a worse outcome. Cognitive Score: Cognitive abilities of child. In the original test, a higher score means better outcome. In order to avoid confusion, we multiplied correlation outcome by -1 so that in this test too, a positive correlation means a worse outcome.



Growth Throughout Pregnancy



Correlation Matrix

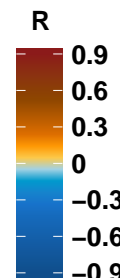
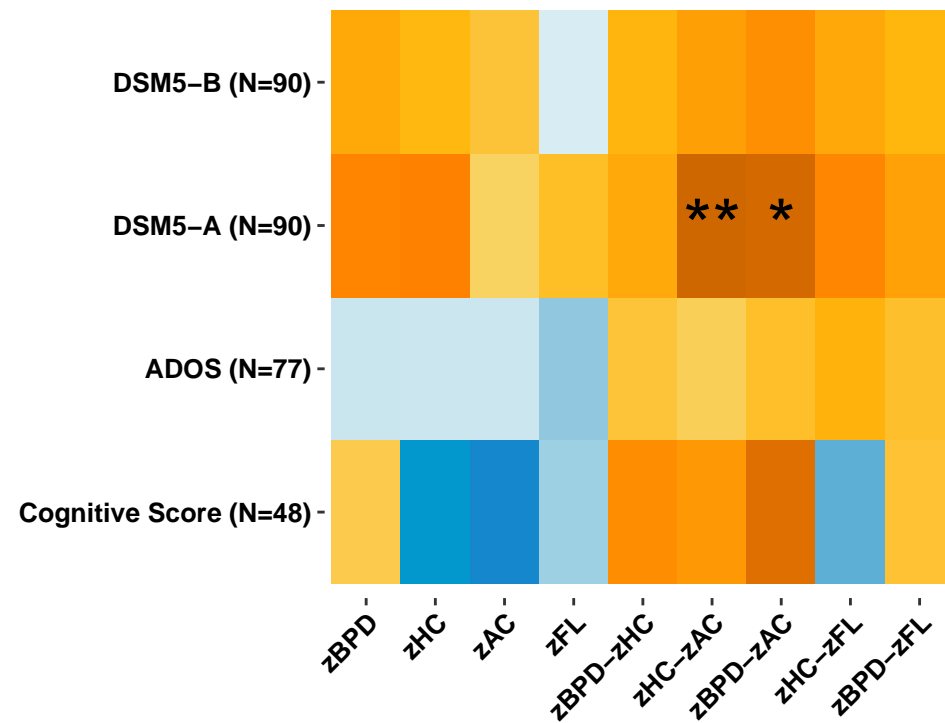
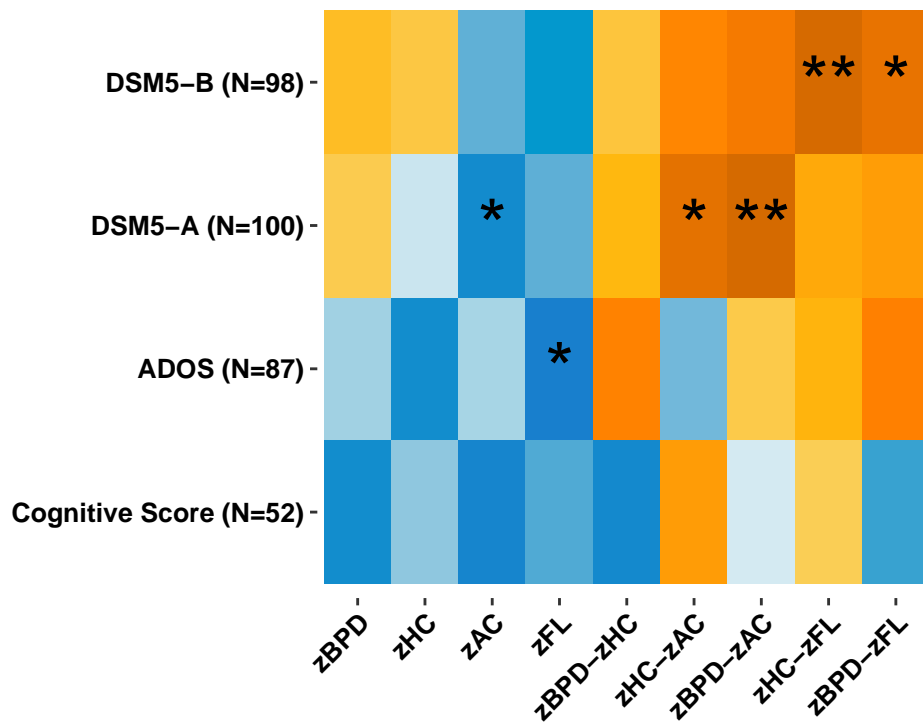
A.

Second Trimester

B.

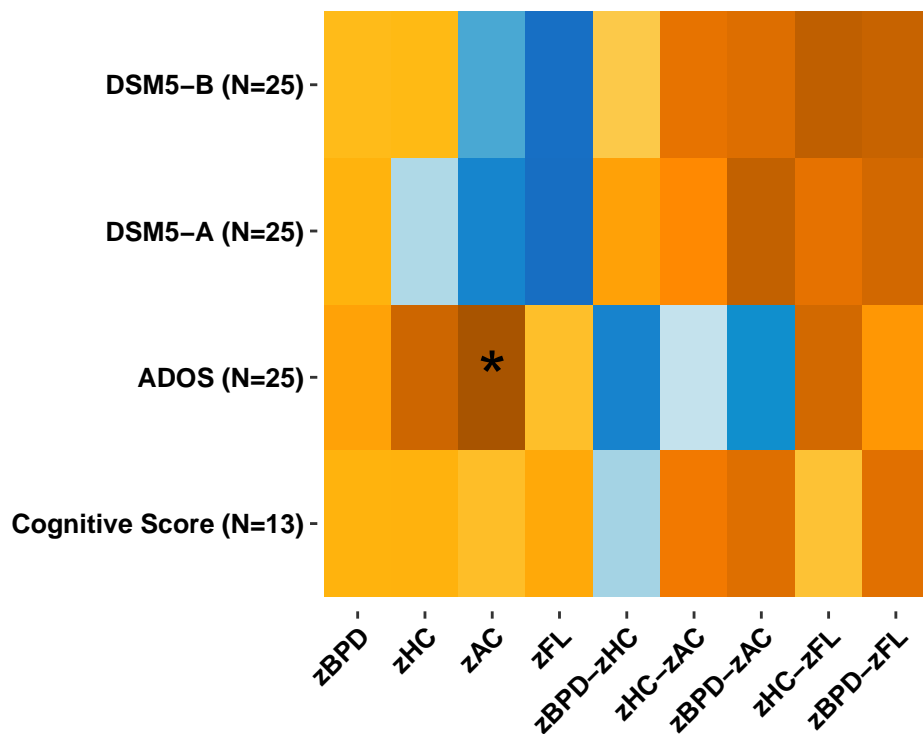
Third Trimester

Males

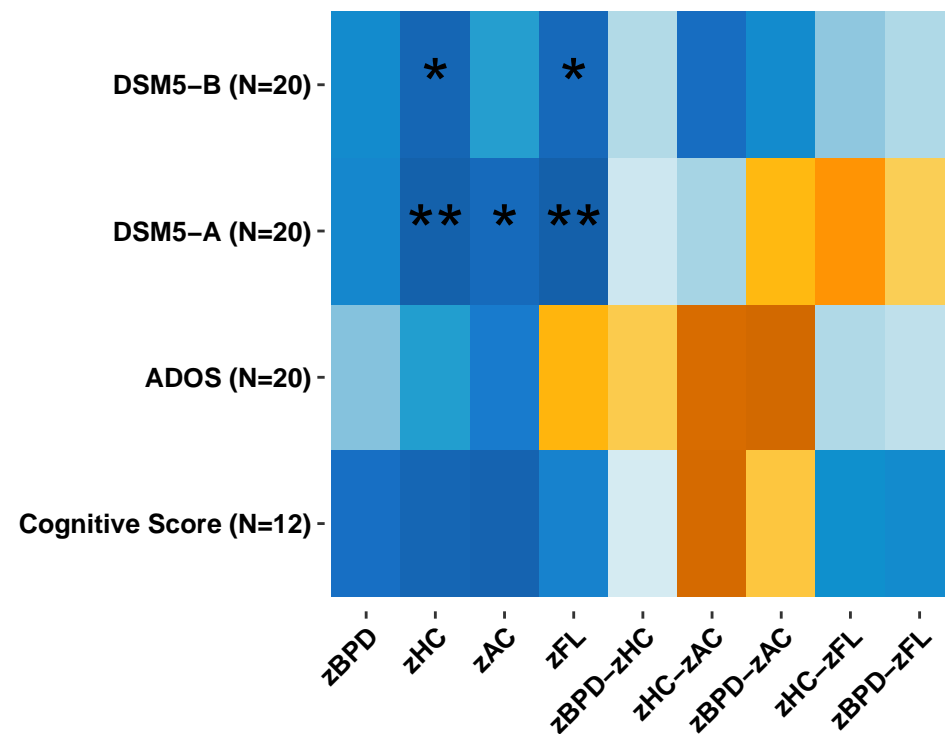


C.

Females



D.



Tables

Table 1. Clinical and Sociodemographic Characteristics for Children included in this Study

Variable		ASD (n = 174)	TDS (n = 178)	TDP (n = 176)
Ethnicity (Jewish)	No. (%)	127(73)	131(73.6)	139(79)
	P-value ^a		0.898	0.190
Sex (male)	No. (%)	140(80.5)	98(55.1)	146(83)
	P-value ^a		<0.001	0.546
Pregnancy number	Median (IQR)	2(1-3)	2(2-4)	2(1-3)
	P-value ^d		0.104	0.086
Previous abortions	Median (IQR)	0(0-1)	0(0-1)	0(0-1)
	P-value ^d		0.819	0.156
C section	No. (%)	31(18.5)	23(13.4)	26(17.9)
	P-value ^a		0.200	0.905
Age at birth (weeks)	Mean (SD)	38.8(2.5)	39.0(2)	39.3(1.4)
	P-value ^c		0.636	0.082
Birth weight (g)	Mean (SD)	3174 (579)	3186(552)	3324(523)
	P-value ^c		0.863	0.026
1-min low APGAR score (<7)	No. (%)	4(5)	5(5)	6(6)
	P-value ^b		0.528	0.511
Mother's age (years)	Mean (SD)	28.6(5.8)	28.6(5.2)	29.2(4.8)
	P-value ^c		0.940	0.255
Examined by physician	No. (%)	136(85)	140(78.7)	90(79.6)
	P-value ^a		0.132	0.248
Breech Presentation at US	No. (%)	51(30.9)	39(22.4)	40(24.1)
	P-value ^a		0.167	0.154
Gestation age assessed by last menstrual period	No. (%)	115(74.7)	129(75.9)	85(79.4)
	P-value ^a		0.801	0.371
Gestational age at 2 nd trimester US (weeks)	Mean (SD)	22.3(1.8)	22.5(1.5)	21.4(2.8)
	P-value ^c		0.316	0.003
Gestational age at 3 rd trimester US (weeks)	Mean (SD)	32.5(2.6)	32.6(2.4)	33.2(2.9)
	P-value ^c		0.725	0.066

^a Chi-square; ^b Fisher's Exact Test; ^c Two-sided t-test; ^d Mann-Whitney U test

Table 2. Differences in Fetal Biometric Measures

Variable	Group comparison	Mean difference ± SD	P-value ^a	Adjusted odds ratio (aOR) ^b	95% CI	P-value ^a
Second Trimester: 131 ASD-TDS pairs, 116 ASD-TDP pairs						
zBPD	ASD(Ref) - TDS	0.420±1.63	0.012	1.261	0.998-1.594	0.156
	ASD(Ref) - TDP	-0.402±1.53	0.018	0.685	0.527-0.890	0.015
	TDS(Ref) - TDP	-0.870±1.74	<0.001	0.587	0.459-0.751	<0.001
zHC	ASD(Ref) - TDS	0.181±1.24	0.300	1.087	0.795-1.487	1
	ASD(Ref) - TDP	-0.216±1.11	0.12	0.693	0.486-0.987	0.126
	TDS(Ref) - TDP	0.441±1.26	<0.001	0.598	0.426-0.838	0.009
zAC	ASD(Ref) - TDS	0.094±1.09	0.984	0.991	0.701-1.400	1
	ASD(Ref) - TDP	-0.180±1.27	0.402	0.809	0.595-1.100	0.531
	TDS(Ref) - TDP	-0.285±1.25	0.036	0.792	0.571-1.097	0.480
zFL	ASD(Ref) - TDS	-0.071±1.07	1	0.838	0.596-1.177	0.921
	ASD(Ref) - TDP	-0.099±1.04	0.933	0.846	0.591-1.212	1
	TDS(Ref) - TDP	-0.026±1.02	1	1.061	0.733-1.536	1
zBPD-zHC	ASD(Ref) - TDS	0.257±1.13	0.033	1.577	1.081-2.302	0.054
	ASD(Ref) - TDP	-0.181±0.96	0.141	0.621	0.407-0.948	0.081
	TDS(Ref) - TDP	-0.442±1.12	<0.001	0.521	0.364-0.746	<0.001
zHC-zAC	ASD(Ref) - TDS	0.101±1.06	0.837	1.159	0.811-1.657	1
	ASD(Ref) - TDP	-0.025±1.16	1	0.939	0.679-1.298	1
	TDS(Ref) - TDP	-0.153±1.10	0.369	0.715	0.498-1.027	0.210
zBPD-zAC	ASD(Ref) - TDS	0.324±1.41	0.027	1.369	1.041-1.800	0.072
	ASD(Ref) - TDP	-0.238±1.49	0.276	0.767	0.588-1.000	0.150
	TDS(Ref) - TDP	-0.592±1.46	<0.001	0.572	0.431-0.758	<0.001
zHC-zFL	ASD(Ref) - TDS	0.278±1.03	0.009	1.489	1.009-2.197	0.135
	ASD(Ref) - TDP	-0.109±1.10	0.882	0.813	0.575-1.149	0.720
	TDS(Ref) - TDP	-0.411±1.07	<0.001	0.502	0.341-0.738	<0.001
zBPD-zFL	ASD(Ref) - TDS	0.520±1.50	<0.001	1.482	1.136-1.934	0.012
	ASD(Ref) - TDP	-0.295±1.50	0.111	0.733	0.562-0.955	0.063
	TDS(Ref) - TDP	-0.858±1.50	<0.001	0.489	0.368-0.650	<0.001
Third Trimester: 116 ASD-TDS pairs, 116 ASD-TDP pairs						
zBPD	ASD(Ref) - TDS	0.061±2.05	1	0.920	0.743-1.140	1
	ASD(Ref) - TDP	-0.174±2.13	1	0.925	0.773-1.106	1
	TDS(Ref) - TDP	-0.351±2.21	0.270	0.985	0.819-1.184	1
zHC	ASD(Ref) - TDS	0.040±1.34	1	0.924	0.670-1.274	1
	ASD(Ref) - TDP	-0.028±1.34	1	0.968	0.729-1.287	1
	TDS(Ref) - TDP	-0.163±1.51	0.738	0.977	0.749-1.275	1
zAC	ASD(Ref) - TDS	-0.084±1.38	1	0.868	0.637-1.182	1
	ASD(Ref) - TDP	-0.048±1.73	1	0.966	0.777-1.202	1
	TDS(Ref) - TDP	0.019±1.73	1	1.050	0.835-1.321	1
zFL	ASD(Ref) - TDS	-0.176±1.06	0.237	0.745	0.502-1.106	0.432
	ASD(Ref) - TDP	0.082±1.09	1	1.150	0.813-1.627	1
	TDS(Ref) - TDP	0.218±1.16	0.135	1.407	0.994-1.992	0.162
zBPD-zHC	ASD(Ref) - TDS	0.039±1.37	1	0.908	0.651-1.266	1
	ASD(Ref) - TDP	-0.103±1.48	1	0.910	0.702-1.178	1
	TDS(Ref) - TDP	-0.167±1.54	0.735	1.022	0.781-1.337	1
zHC-zAC	ASD(Ref) - TDS	0.181±1.11	0.273	1.244	0.845-1.830	0.804
	ASD(Ref) - TDP	0.044±1.47	1	1.043	0.805-1.351	1
	TDS(Ref) - TDP	-0.164±1.51	0.726	0.923	0.708-1.204	1
zBPD-zAC	ASD(Ref) - TDS	0.094±1.70	1	0.922	0.711-1.196	1
	ASD(Ref) - TDP	-0.097±1.89	1	0.947	0.774-1.158	1
	TDS(Ref) - TDP	-0.307±1.95	0.276	0.984	0.797-1.215	1
zHC-zFL	ASD(Ref) - TDS	0.241±1.07	0.063	1.235	0.829-1.841	0.897
	ASD(Ref) - TDP	-0.148±1.10	0.498	0.782	0.552-1.109	0.504
	TDS(Ref) - TDP	-0.401±1.44	0.009	0.765	0.574-1.018	0.198
zBPD-zFL	ASD(Ref) - TDS	0.201±1.88	0.792	0.986	0.781-1.245	1
	ASD(Ref) - TDP	-0.284±1.85	0.333	0.845	0.684-1.043	0.348
	TDS(Ref) - TDP	-0.544±2.09	0.018	0.894	0.734-1.088	0.786

^a Paired T-test: ASD-TDS, ASD-TDP ; Two-sided t-test: TDS-TDP; all p-values are Bonferroni corrected for multiple comparison.

^b ASD-TDS: adjusted to maternal age and gender; ASD-TDP: adjusted to maternal age; TDS-TDP: adjusted to maternal age, gender and ethnicity.