

1 **Outcomes of COVID-19 related hospitalisation among people with HIV in the ISARIC**
2 **WHO Clinical Characterisation Protocol UK Protocol: prospective observational study**

3

4 **Authors**

- 5 Anna Maria Geretti*¹
6 Alexander J. Stockdale*¹
7 Sophie H. Kelly*¹
8 Muge Cevik²
9 Simon Collins³
10 Laura Waters^{4,5}
11 Giovanni Villa⁶
12 Annemarie Docherty^{7,8}
13 Ewen M Harrison⁷
14 Lance Turtle¹
15 Peter JM Openshaw⁹
16 J Kenneth Baillie^{8,10}
17 Caroline A. Sabin^{11,12}\$
18 Malcolm G Semple^{1,13}\$

19

20 *Joint first authors

21 \$ Joint senior authors

22

23 CHASE study group**

24 **Daniel Bradshaw¹⁴, Alison Brown¹⁴, Nicky Connor¹⁴, Valerie Delpech¹⁴, Saye Khoo¹,
25 Tamyo Mbisa^{12, 14}, Chloe Orkin¹⁵, Ann Sullivan¹⁶.

26

27 ISARIC4C Investigators [Listed separately]

28

29 **Affiliations**

- 30 1. National Institute for Health Research (NIHR) Health Protection Research Unit (HPRU)
31 in Emerging and Zoonotic Infections, Institute of Infection, Veterinary and Ecological
32 Sciences, Faculty of Health and Life Sciences, University of Liverpool, Liverpool, UK
33 2. Division of Infection and Global Health Research, School of Medicine, University of St
34 Andrews, St Andrews, UK

- 35 3. HIV i-Base, London, UK
- 36 4. Mortimer Market Centre, Central and North West London NHS Foundation Trust,
- 37 London, UK
- 38 5. British HIV Association
- 39 6. Department of Global Health and Infection, Brighton and Sussex Medical School,
- 40 University of Sussex, Brighton, UK
- 41 7. Centre for Medical Informatics, Usher Institute, University of Edinburgh, Edinburgh, UK
- 42 8. Intensive Care Unit, Royal Infirmary Edinburgh, Edinburgh, UK
- 43 9. National Heart and Lung Institute, Imperial College London, London, UK
- 44 10. Roslin Institute, University of Edinburgh, Edinburgh, UK
- 45 11. University College London, London, UK
- 46 12. NIHR HPRU in Blood Borne and Sexually Transmitted Infections at UCL
- 47 13. Respiratory Medicine, Alder Hey Children's Hospital, Institute in The Park, University of
- 48 Liverpool, Alder Hey Children's Hospital, Liverpool, UK
- 49 14. Public Health England, London, UK
- 50 15. Bart's Health and Queen Mary University of London, London, UK
- 51 16. Chelsea and Westminster Hospital, London, UK

52

53 **Correspondence**

54 **For queries related to people with HIV:**

55 Prof Anna Maria Geretti, MD, PhD, FRCPath

56 Institute of Infection, University of Liverpool, 8 West Derby Street, Liverpool L69 7BE

57 Email: geretti@liverpool.ac.uk

58 Telephone: +44 151 795 9625

59

60 **For queries related to the ISARIC CCP-UK study**

61 Prof Malcolm G Semple, PhD, FRCPE, FRCPCH

62 Institute of Infection, University of Liverpool, 8 West Derby Street, Liverpool L69 7BE

63 Email: M.G.Semple@liverpool.ac.uk

64 Telephone: +44 795 833 5337

65

66 **Author Contributions:**

67 AMG - designed the study concept, reviewed all aspects of the data analysis and
68 interpretation, contributed to the writing of the manuscript, and performed the final review of
69 the manuscript.

70 AJS - performed the data analysis and contributed to the data interpretation and the writing of
71 the manuscript.

72 SHK - performed the initial literature search and contributed to the data analysis and
73 interpretation and the writing of the manuscript.

74 MC - contributed to conceptualisation and review of the manuscript

75 LW - contributed to conceptualisation and review of the manuscript

76 SC - contributed to conceptualisation and review of the manuscript

77 GV - contributed to data analysis and interpretation and the writing of the manuscript

78 AD - contributed to the ISARIC CCP-UK study design and data collection and reviewed the
79 manuscript

80 EMH - contributed to the ISARIC-CCP UK study design and data collection and reviewed
81 the manuscript

82 LT- contributed to the ISARIC-CCP UK study design and data collection and reviewed the
83 manuscript

84 PJMO - ISARIC CCP-UK Co-Lead investigator, sourced funding, contributed to the ISARIC
85 CCP-UK study design and data collection and reviewed the manuscript

86 JKB - ISARIC CCP-UK Consortium lead investigator, sourced funding, contributed to the
87 ISARIC CCP-UK study design and data collection and reviewed the manuscript

88 CAS - advised on all aspects of the conceptualisation and data analysis and interpretation,
89 and contributed to the writing and final review of the manuscript

90 MGS - ISARIC CCP-UK Protocol Chief Investigator and guarantor of the data, sourced
91 permissions and funding, contributed to the ISARIC CCP-UK study design and data
92 collection and reviewed the manuscript.

93 **ABSTRACT**

94 **Background.** There is conflicting evidence about how HIV infection influences COVID-19.
95 We compared the presentation characteristics and outcomes of people with and without HIV
96 hospitalised with COVID-19 at 207 centres across the United Kingdom.

97 **Methods.** We analysed data from people with laboratory confirmed or highly likely COVID-
98 19 enrolled into the ISARIC CCP-UK study. The primary endpoint was day-28 mortality
99 after presentation. We used Kaplan-Meier methods and Cox regression to describe the
100 association with HIV status after adjustment for sex, ethnicity, age, indeterminate/probable
101 hospital acquisition of COVID-19 (definite hospital acquisition excluded), presentation date,
102 and presence/absence of ten comorbidities. We additionally adjusted for disease severity at
103 presentation as defined by hypoxia/oxygen therapy.

104 **Findings.** Among 47,539 patients, 115 (0.24%) had confirmed HIV-positive status and
105 103/115 (89.6%) had a record of antiretroviral therapy. At presentation, relative to the HIV-
106 negative group, HIV-positive people were younger (median 55 versus 74 years; $p < 0.001$),
107 had a higher prevalence of obesity and moderate/severe liver disease, higher lymphocyte
108 counts and C-reactive protein, and more systemic symptoms. The cumulative incidence of
109 day-28 mortality was 25.2% in the HIV-positive group versus 32.1% in the HIV-negative
110 group ($p = 0.12$); however, stratification for age revealed a higher mortality among HIV-
111 positive people aged below 60 years. The effect of HIV-positive status was confirmed in
112 adjusted analyses (adjusted hazard ratio [HR] 1.49, 95% confidence interval [CI] 0.99-2.25;
113 $p = 0.06$). Following additional adjustment for disease severity at presentation, mortality was
114 higher in HIV-positive people (adjusted HR 1.63; 95% CI 1.07-2.48; $p = 0.02$). In the HIV-
115 positive group, mortality was more common among those who were slightly older and among
116 people with obesity and diabetes with complications.

117 **Interpretation.** HIV-positive status may be associated with an increased risk of day-28
118 mortality following a COVID-19 related hospitalisation.

119 **Funding.** NIHR, MRC, Wellcome Trust, Department for International Development, Bill and
120 Melinda Gates Foundation.

121 **Study registration** ISRCTN66726260

122

123 **RESEARCH IN CONTEXT**

124 **Evidence before this study**

125 We searched PubMed for articles in all languages containing the words “COVID*”,
126 “coronavirus”, “SARS CoV-2” AND “HIV”. After screening on 23rd July 2020, we found 51
127 articles reporting outcomes of COVID-19 in HIV-positive people. Of these, 2 were
128 systematic reviews, 24 were single case reports or case series of under 10 participants, and 12
129 were larger case series or retrospective cohorts without matched controls. There were two
130 cohort studies that matched HIV-positive people diagnosed with COVID-19 to the general
131 population attending for HIV care in the same area, and three studies that matched HIV-
132 positive people diagnosed with COVID-19 to HIV-negative controls. Some of the evidence
133 from the United States and Europe to date suggests that people with HIV experience a similar
134 disease course and outcomes of COVID-19 compared to the general population. However,
135 many of the studies are limited by small sample size, lack of comparator group and lack of
136 adjustment for potential confounding. In contrast, preliminary results from a cohort study of
137 over 20,000 participants in South Africa indicate that HIV-positive status more than doubles
138 the risk of COVID-19 related mortality. Currently, the evidence from the United Kingdom is
139 limited to two case series comprising a total of 21 patients.

140

141 **Added value of this study**

142 This study analysed data collected from 207 sites across the United Kingdom as part of
143 ISARIC CCP, the largest prospective cohort of patients hospitalised with COVID-19, to
144 evaluate the association between HIV-positive status and day-28 mortality. The study has the
145 benefit of a relatively large number of participants with HIV (n=115, almost all receiving
146 antiretroviral therapy) and importantly, the ability to direct compare their presenting
147 characteristics and outcomes to those of 47,424 HIV-negative controls within the same
148 dataset. This includes the ability to assess the influence of gender, ethnicity and age, as well
149 as the effect of key comorbidities including chronic cardiac, pulmonary, renal and
150 haematological disease, diabetes, obesity, chronic neurological disorder, dementia, liver
151 disease, and malignancy. Unlike some of the other evidence to date, but in line with the data
152 from South Africa, this study indicates that HIV-positive status may increase the risk of
153 mortality with COVID-19 compared to the general population, with an effect that was
154 especially evident among people with HIV aged below 60 years and was independent of
155 gender or ethnicity. Although we detected an association between mortality among people

156 with HIV and occurrence of obesity and diabetes with complication, the effect of HIV-
157 positive status persisted after adjusting for comorbidities.

158

159 **Implications of all the available evidence**

160 People with HIV may be at increased risk of severe outcomes from COVID-19 compared to
161 the general population. Ongoing data collection is needed to confirm this association.

162 Linkage of hospital outcome data to the HIV history will be paramount to establishing the
163 determinants of the increased risk. COVID-19 related hospitalisation should pursue
164 systematic recording of HIV status to ensure optimal management and gathering of evidence.

165

166 **Introduction**

167 Factors associated with COVID-19 related mortality include older age and presence of
168 chronic comorbidities, particularly obesity, chronic kidney disease (CKD), chronic
169 obstructive pulmonary disease (COPD), serious cardiovascular disease, type II diabetes, and
170 transplant-related immunosuppression.¹⁻⁵ There is no conclusive evidence about the
171 relationship with HIV infection. If untreated, HIV causes progressive immunosuppression;
172 however, antiretroviral therapy (ART) restores immune function and life-expectancy.⁶
173 Immune restoration is not always complete despite effective ART, however, and a subset of
174 people with HIV (PWH) remains at risk of persistent immune dysfunction,⁷ which might
175 augment severity of COVID-19, or conversely, possibly reduce the immune responses that
176 can complicate COVID-19.⁸ Although some antiretroviral drugs have been proposed to
177 protect against COVID-19, the evidence remains uncertain.^{9,10} Importantly, HIV might
178 increase the risk of adverse COVID-19 outcomes due to the common prevalence of co-factors
179 such as CKD, COPD, and diabetes,¹¹ alongside socioeconomic variables that may carry a
180 negative influence.¹²

181

182 Several case series and observational cohort studies have described the outcomes of COVID-
183 19 in PWH across Europe,^{9,13-19} Asia,^{18,19} and the United States.^{8,18-22} These studies have
184 often been limited by small sample size, lack of direct comparative data from people without
185 HIV, or inability to adjust for comorbidities. Some reports from Italy and New York
186 indicated that HIV did not increase the risk of COVID-19 related hospitalisation or
187 mortality,^{4,14,21} whereas two others suggested an increased risk of mortality among PWH
188 hospitalised with COVID-19.^{9,20} Preliminary data from South Africa similarly suggest that
189 HIV-positive status more than doubled the risk of COVID-19 related mortality.²³

190

191 To characterise the presenting characteristics and outcomes of COVID-19 related
192 hospitalisation in PWH relative to those without HIV in the United Kingdom (UK), we
193 analysed data collected within the International Severe Acute Respiratory and emerging
194 Infections Consortium (ISARIC) Clinical Characterisation Protocol (CCP), the largest
195 prospective observational study of patients admitted to hospital with COVID-19 worldwide.²⁴

196

197 **Methods**

198 **Study design**

199 ISARIC CCP-UK is an ongoing prospective cohort study in acute care hospitals in England,
200 Scotland, and Wales.²⁴ The protocol, case report form (CRF, version 9.2) and other study
201 materials, and details of the Independent Data and Material Access Committee are available
202 online.²⁴ The study was activated in the UK on 17th January 2020. Inclusion criteria were
203 people aged ≥ 18 years who were admitted to one of the participating acute care trusts (207 at
204 the time of data extraction) with either laboratory-confirmed or highly likely (based on
205 clinical, laboratory and radiological findings) SARS CoV-2 infection. PCR-based virus
206 detection in nasopharyngeal swabs was the only test available during the study and the
207 decision to test was at the discretion of the attending clinical team, who also decided upon
208 hospital admission, transfer into critical care and use of ventilation. For the present analyses,
209 baseline was defined as the date of hospital admission or symptom onset (for those with
210 symptom onset after hospitalisation, see below). Our analyses included individuals with a
211 baseline date that was on or before 4th June 2020 for whom ≥ 14 days had elapsed until the
212 date of data extraction on 18th June 2020. Individuals without information on the date of
213 admission or with a baseline date after 4th June 2020 were excluded. Where the date of
214 symptom onset was missing, we assumed that symptoms began on the date of the SARS-
215 COV-2 PCR test, or if this was not recorded, the date of admission. Information on positive
216 HIV status, as reported to ISARIC CCP-UK, was confirmed through cross-checking with
217 reported receipt of ART (n=103), receipt of *Pneumocystis jirovecii* prophylaxis in the
218 absence of non-HIV indications (n=2), or directly with a site investigator (n=10). Individuals
219 with missing HIV status and those with unconfirmed HIV-positive status were excluded from
220 the analyses.

221

222 **Statistical analysis**

223 Presenting characteristics were compared between HIV-positive and HIV-negative people
224 and between PWH who died and those who survived to discharge using Wilcoxon rank sum
225 tests (for continuous variables) and Pearson's chi-squared or Fisher's exact test (for
226 categorical variables). For all individuals, follow-up ended on the date of death. Patients
227 discharged to receive palliative care in the community were considered to have died three
228 days following discharge. Follow-up was right censored at day 28 for those remaining alive
229 as an inpatient, or for those who were discharged not for palliative care prior to day 28. A
230 data check showed that the vast majority of those discharged prior to day 28 were still alive

231 on this date. Follow-up on patients transferred to another facility was censored on the date of
232 transfer. For patients who died, were transferred or discharged on the date of admission or
233 who had no further follow-up recorded beyond the first day, we recorded 0-5 days of follow-
234 up time. The primary analysis used a Kaplan-Meier approach to visually display the
235 cumulative incidence of mortality over this period, overall and in strata defined by sex and
236 age. Cox proportional hazards regression with the Efron method for ties was then used to
237 describe the association of mortality with HIV status, before and after adjustment for the
238 following potential confounders: sex, ethnicity, age (in quadratic form),
239 indeterminate/probable hospital acquisition of COVID-19 (as defined above), and ten
240 comorbidities at admission (a series of binary variables to indicate the presence or absence of
241 each of chronic cardiac disease, chronic pulmonary disease, chronic renal disease, diabetes,
242 obesity, chronic neurological disorder, dementia, liver disease [mild, moderate or severe],
243 malignancy, and chronic haematological disease). We also included adjustment for the
244 baseline date to account for changes in mortality over the period of interest. Where entries on
245 comorbidity (presence or absence) were partially missing from the study CRF, we assumed
246 that missing data indicated the absence of the specific comorbidity; however, participants
247 with missing entries on all comorbidities were excluded from these adjusted analyses.
248 Finally, we fitted a further model with additional adjustment for hypoxia at presentation,
249 defined as oxygen saturation (SpO₂) <94% on air or a record of receiving oxygen, as a
250 marker of presenting disease severity, in order to assess whether any increased/decreased risk
251 of mortality in PWH could be explained by a different stage of disease advancement at
252 hospitalisation. A series of sensitivity analyses were performed for the main mortality
253 outcome: i) we repeated the analyses after censoring follow-up on the day of discharge for
254 those discharged before day 28; ii) we included those with definite hospital-acquired COVID-
255 19 (baseline = date of symptom onset); iii) we used symptom onset date as the baseline date
256 for all (rather than admission date where applicable); iv) we excluded PWH lacking a record
257 of ART; v) we calculated propensity scores for HIV-positive status using a logistic regression
258 model based on sex, ethnicity, age (in quadratic form), indeterminate/probable hospital
259 acquisition of COVID-19, smoking status, baseline date, and ten comorbidities, and included
260 the propensity score in a Cox regression model for death at 28 days; and vi) we considered a
261 binary endpoint of 14-day mortality and performed logistic regression (with the same
262 confounder adjustment as described above). In the HIV-positive group, we used a Cox
263 proportional hazard model to investigate the associations of presenting characteristics with

264 day-28 mortality. Analyses were conducted in Stata v16.1 (Statcorp, College Station, TX,
265 USA).

266

267

268 **Results**

269 **Participants**

270 ISARIC CCP-UK recorded 53,992 people with COVID-19 between 17th January 2020 and
271 18th June 2020. After excluding non-eligible participants (Figure 1), the final analysis
272 included 47,539 patients, of whom 115 (0.24%) had confirmed HIV-positive status. The
273 characteristics of patients excluded from the analysis did not differ by sex, ethnicity or age; in
274 particular, the characteristics of those excluded due to missing data on HIV status closely
275 resembled those reported to be HIV-negative (Supplementary Table 1). Among PWH, one
276 person was diagnosed with HIV during the admission and 103 (89.6%) had an ART record.
277 The regional distribution of study participants with HIV compared to the total UK population
278 of people accessing HIV care (2018 data) is shown in Supplementary Table 2.

279

280 **Characteristics at presentation**

281 The presenting characteristics according to HIV status are summarized in Tables 1-3 and
282 Figure 2. PWH were younger than HIV-negative people (medians of 55 versus 74 years,
283 $p<0.001$) (Table 1, Figure 2). There were fewer women in the HIV-positive group but
284 significantly larger proportions of people of black ethnicity. A similar proportion had no
285 recorded comorbidities, whereas occurrence of ≥ 2 comorbidities was more prevalent in the
286 HIV-negative group. PWH had lower prevalence of chronic cardiac disease, chronic
287 pulmonary disease, chronic neurological disorders, dementia, malignancy and
288 rheumatological disease, and higher rates of obesity and moderate/severe liver disease. There
289 were small differences in the prevalence of asthma, diabetes without complications, mild
290 liver disease, and malnutrition, whereas proportions with CKD, diabetes with complications
291 and chronic haematological disease were similar in the two groups.

292

293 The duration of symptoms was longer in the HIV-positive group (medians of 5 vs. 3 days,
294 $p=0.001$) (Table 2). PWH were more likely to present with systemic symptoms and signs,
295 including fever, headache, myalgia and tachycardia, and to have cough, sore throat and chest
296 pain. To a lesser extent, they also had more common occurrence of gastrointestinal
297 symptoms. Respiratory rate, occurrence of tachypnoea and hypoxia, and radiological

298 evidence of chest infiltrates did not show significant differences between the two groups.
299 PWH presented with lower total white blood cell and platelet count, but higher lymphocyte
300 count and C-reactive protein (CRP) (Table 3). Other laboratory parameters showed no
301 significant differences.

302

303 COVID-19 outcomes

304 During admission, whereas there was no significant difference in the proportion of
305 participants who received oxygen between the two groups, significantly higher proportions of
306 PWH were admitted to critical care and received non-invasive and invasive ventilation
307 (Figure 3). However, after adjustment for sex, ethnicity, age, baseline date,
308 indeterminate/probable hospital acquisition of COVID-19, and ten comorbidities, the odds of
309 admission to critical care were similar between the two groups (odds ratio [OR] 1.13; 95%
310 confidence interval [CI] 0.72-1.75; $p=0.59$) (Supplementary Table 3).

311

312 Overall, by day 28, 13,981 (29.4%) participants were known to have died, 23,642 (49.7%)
313 had been discharged alive, 3,715 (7.8%) remained in hospital, and 1,801 (3.8%) had
314 transferred to other facilities; in the remaining 4,400 (9.2%) the outcome was unknown
315 (Supplementary Table 4). In the HIV-positive group, 26 (22.6%) were known to have died
316 compared to 13,955 (29.1%) of the HIV-negative group; the cumulative incidence of day-28
317 mortality was 25.2% vs. 32.1%, respectively ($p=0.12$, log-rank test, Figure 4 A). Whilst
318 findings were similar (in unadjusted analyses) regardless of sex (Figure 4 B, C), stratification
319 for age revealed higher mortality among PWH in the two younger age groups (<50 years and
320 50-59 years) but not in those aged 60-79 years (Figure 3 D-F).

321

322 In unadjusted models (Table 4), the cumulative hazard of day-28 mortality was 26% lower in
323 HIV-positive vs. HIV-negative people (HR 0.74, 95% CI 0.50-1.08; $p=0.12$). The hazard was
324 similar after adjustment for either sex or ethnicity; in contrast, and as expected based on the
325 stratified Kaplan-Meier analyses, adjustment for age resulted in a change in the direction of
326 the association (adjusted HR 1.39, 95% CI 0.94-2.09; $p=0.10$) (Table 4). After further
327 adjustment for sex, ethnicity, age, baseline date, indeterminate/probable hospital acquisition
328 of COVID-19 and ten co-morbidities, the risk of mortality was 49% higher in PWH (adjusted
329 HR 1.49; 95% CI 0.99-2.26; $p=0.06$). Following additional adjustment for disease severity at
330 presentation (based on a record of hypoxia or oxygen therapy), the risk of mortality was 63%
331 higher in PWH (adjusted HR 1.63; 95% CI 1.07- 2.48; $p=0.02$) (Table 4). After day 28, there

332 were no deaths recorded in the HIV-positive group whereas 586 deaths occurred in the HIV-
333 negative group.

334

335 Sensitivity analyses showed consistent results (Supplementary Table 5). In particular,
336 censoring follow-up on the day of discharge for those discharged before day 28, including
337 patients with definite hospital acquired COVID-19, using symptom onset as the start of
338 follow-up, or excluding PWH lacking an ART record did not significantly alter the model. A
339 separate logistic regression model with a binary variable of day-14 mortality showed
340 increased odds of mortality in the HIV-positive group (adjusted OR 1.77; 95% CI 1.06-2.95;
341 $p=0.03$).

342

343 In the HIV-positive group, relative to patients who survived by day 28, patients who died
344 were slightly older and had a higher prevalence of obesity and diabetes with complications
345 (Table 5 and Supplementary Tables 6 and 7). An ART record was more often missing among
346 those who died. No indications of other major differences were observed.

347

348 **Discussion**

349 *Principal findings*

350 In this study of 115 HIV-positive and 47,979 HIV-negative people, we found evidence
351 suggesting a 63% increased risk of day-28 mortality among PWH hospitalised with COVID-
352 19 compared to HIV-negative individuals in the same dataset, after adjustment for sex,
353 ethnicity, age, baseline date, ten key comorbidities, and disease severity at presentation (as
354 indicated by a record of hypoxia or receiving oxygen therapy). The latter adjustment took
355 into consideration that doctors may be more likely to admit HIV-positive people with
356 COVID-19 despite less severe symptoms. A striking difference in mortality was seen in the
357 younger age groups (<50 years and 50-59 years), although the number of older PWH was
358 small.

359

360 The role of age, sex and ethnicity on COVID-19 outcomes is the focus of much research.^{1,2,25}
361 PWH in our study were significantly younger than the HIV-negative group and adjusting for
362 age changed the direction of the association between HIV status and day-28 mortality,
363 suggesting that age was a significant confounder in our analyses. Men were more prevalent in
364 the HIV-positive group, which is consistent with the epidemiology of HIV infection in the
365 UK, where men represent just over two thirds of the whole population with HIV.²⁶ People of

366 black ethnicity made up nearly 42% of the HIV-positive group, whereas men and women of
367 black African ethnicity account for ~26% of the total number of PWH in the UK.²⁶
368 Nonetheless, adjustment for sex or ethnicity alone did not impact our relative hazard
369 estimates.

370

371 Whilst there is a recognised interplay between HIV and comorbidities, omitting the
372 adjustment for comorbidities did not modify the association. PWH had fewer comorbidities,
373 notably lower prevalence of chronic pulmonary disease and malignancies, and this is likely to
374 be partly a function of their younger age. HIV-positive people who died were older and were
375 more likely to suffer from obesity and diabetes with complications than those who survived
376 to discharge. Similar trends have been seen in the general population.^{1,25} While these
377 observations highlight the importance of obesity and diabetes as cofactors, adjustment for
378 comorbidities in our model did not modify the association, suggesting that the apparent
379 increased risk of COVID-19 related mortality in PWH was not merely due to the presence of
380 promoting comorbidities.

381

382 *Comparison with other studies*

383 Evidence from published studies is not entirely consistent about the interplay between HIV
384 and COVID-19.^{8,9,13-23} A case-control study from New York compared 88 PWH, all of whom
385 were receiving ART, and 405 HIV-negative controls matched by age, gender, ethnicity, and
386 calendar week of infection.²¹ The study found no difference in the outcomes of COVID-19
387 related hospitalisation after adjusting for demographics, COPD, smoking, and baseline
388 ferritin and white blood cell count. Apart from the differences in the study design and
389 geography, there are fundamental differences between our study population and the New
390 York cohort described by Sigel et al.²¹ Most importantly, participants in the latter study were
391 older, with a median age of 61 years (IQR 54-67 years), whereas we found that the excess
392 mortality occurred in HIV-positive people aged below 60 years. Whereas malignancies were
393 recorded less commonly (3% vs. 10%), prevalence of obesity was nearly double in our cohort
394 (18% vs. 11%). At the other spectrum, preliminary data from the Western Cape Department
395 of Health in South Africa indicate that HIV-positive status was associated with increased
396 hazard of mortality [adjusted HR 2.75].²³ Although the South African model did not account
397 for history of tuberculosis, obesity and socioeconomic status, it is of significance that HIV
398 suppression on ART made no difference to the risk.

399

400 *Strengths and limitations of this study*

401 A key strength of our study is the ability to perform a direct comparison of people with and
402 without HIV in the same dataset. Our analysis does not address risk factors for a COVID-19
403 diagnosis or a COVID-19 related hospitalisation among PWH, and cannot add to the current
404 debate about the role of certain antiretroviral agents in modulating such risks.^{9,10} In addition,
405 due to the format of data collection in ISARIC CCP-UK, our analysis cannot provide
406 evidence of the role of HIV-related parameters on outcomes of COVID-19 related
407 hospitalisation, as we did not have details of the ART history, current and nadir CD4 cell
408 count, plasma HIV-1 RNA load, and history of previous HIV-related disease. Only a subset
409 of CRFs from participants with HIV included a record of receiving ART and the records were
410 frequently incomplete.

411

412 Numerically, HIV-positive people who died were more likely not to have a record of being
413 on ART than those who remained alive at day 28. However, it cannot be stated with certainty
414 that those lacking an ART record were untreated nor therefore that lack of ART played a role
415 in the adverse outcomes. Our experience of working with large HIV datasets is that we often
416 find that people with missing data have worse mortality outcomes, simply because mortality
417 prevents collection of a detailed treatment history. In the UK, 93% of the 103,000 people
418 estimated to have HIV infection have been diagnosed and of these the vast majority (97%)
419 receives ART and maintains excellent suppression of the infection.²⁶ Among those with a
420 HIV diagnosis, only a small subset of ~3% is either not engaged with care or experiences
421 problems with virological control despite ART.²⁶ This suggests that the likelihood of PWH in
422 our study being off ART despite an absent record was overall low.

423

424 It is currently unclear how HIV infection and associated immune dysfunction modulates
425 infection with SARS CoV-2. Whilst immunosuppression was associated with poor COVID-
426 19 outcomes in a recent meta-analysis,⁵ effective ART leads to immune reconstitution with
427 improved or normalised CD4 cell counts.⁶ We found no evidence of increased lymphopenia
428 among PWH in our study. Furthermore, compared to HIV-negative people, PWH were more
429 likely to experience systemic symptoms with fever and also showed higher CRP levels. These
430 observations are likely to be reflective of the younger age of PWH in our study,²⁷ and at the
431 same time indicate preserved inflammatory responses in this group. This suggests that the
432 likelihood of PWH in our study being severely immunosuppressed was overall low.

433

434 *Conclusions and policy Implications*

435 After careful considerations and multiple adjustments for demographics, comorbidities and
436 disease severity on admission, our initial analyses of the outcomes of patients hospitalised
437 with COVID-19 in the UK show a signal towards an increased risk of day-28 mortality due to
438 HIV-positive status. The data for this study were collected during the peak of the UK
439 COVID-19 epidemic and the analysis contains a significant proportion of missing data,
440 including a high number of patients with missing HIV status, who were excluded from the
441 analysis. As the pandemic continues to spread in areas of increased HIV prevalence, our
442 observations highlight the importance of recording the HIV status of people hospitalised with
443 COVID-19 to ensure appropriate management during hospitalisation and gather further data
444 to improve our understanding of the reciprocal interactions between SARS-CoV-2 and HIV.

445

446 Despite effective ART and normalised CD4 cell counts, a subset of PWH continue to
447 experience immune activation, inflammation and a pro-coagulatory state,⁷ which may be
448 postulated to modulate the risk of COVID-19 related morbidity and mortality.^{28,29} One
449 determinant of such persistent immune dysfunction is the degree of immunosuppression
450 experienced prior to the start of ART, defined by a low nadir CD4 cell count and inverted
451 CD4:CD8 ratio. In the UK, 43% of people newly diagnosed with HIV in 2018 had a CD4
452 count <350 cells/mm³, a threshold indicative of significant immunosuppression.²⁶
453 Furthermore, current guidelines about starting ART immediately at the time to diagnosis
454 were implemented relatively recently, whereas in the past ART initiation was deferred until
455 the CD4 count had declined below thresholds of initially 200, then 350 and subsequently 500
456 cells/mm³.^{6,30} Thus, many PWH in the UK and worldwide will have experienced years
457 of uncontrolled HIV replication prior to commencing treatment, and may have experienced
458 earlier regimens of suboptimal efficacy, with lasting effects on immune function. Planned
459 linkage of the hospital dataset with the HIV clinic records will be required to clarify the role
460 of ART history, current and nadir CD4 cell count, plasma HIV-1 RNA load and previous
461 history of HIV-related disease on the outcomes observed in this study. Meanwhile, emphasis
462 for PWH should be placed on early HIV diagnosis, prompt ART initiation, and optimised
463 screening for and control of comorbidities including obesity and diabetes.

464

465 **Table 1.** Summary of participant characteristics, stratified by HIV status

Characteristic		HIV-positive n=115		HIV-negative n=47,424		P-value
Age, median years (IQR)		55	(49, 61)	74	(60, 84)	<0.001
Age group, n (%)	<40	7/113	(6.2)	2,574/46,882	(5.5)	<0.001
	40-49	26/113	(23.0)	3,242/46,882	(6.9)	
	50-59	47/113	(41.6)	5,940/46,882	(12.7)	
	60-69	23/113	(20.4)	7,266/46,882	(15.5)	
	≥70	10/113	(8.9)	27,860/46,882	(59.4)	
Female, n (%)		39/114	(34.2)	20,280/47,258	(42.9)	0.06
Ethnicity, n (%)	White	44/106	(41.5)	35,501/42,163	(84.2)	<0.001
	Black	48/106	(45.3)	1,473/42,163	(3.5)	
	Asian	1/106	(0.9)	2,247/42,163	(5.3)	
	Other	13/106	(12.3)	2,942/42,163	(7.0)	
Smoking, n (%)	Never	62/89	(69.7)	17,380/30,348	(57.3)	0.002
	Former	16/89	(18.0)	10,632/30,348	(35.0)	
	Current	11/89	(12.4)	2,336/30,348	(7.7)	
Comorbidities, median number (IQR)		1	(0, 2)	2	(1, 3)	<0.001
Comorbidities, n (%)	None	30/115	(26.1)	9,675/46,696	(20.7)	0.002
	1	44/115	(38.3)	13,532/46,696	(29.0)	
	2	29/115	(25.2)	11,518/46,696	(25.2)	
	≥3	12/115	(10.4)	11,971/46,696	(25.6)	
Type of comorbidities, n (%)	Chronic cardiac disease	20/111	(18.0)	14,603/45,008	(32.5)	0.001
	Chronic pulmonary disease ^a	12/114	(10.5)	8,048/44,872	(17.9)	0.04
	Asthma	11/110	(10.0)	6,228/44,712	(13.9)	0.23
	Chronic renal disease	19/110	(17.3)	7,861/44,683	(17.6)	0.93
	Diabetes, no complications	16/110	(14.6)	7,776/43,818	(17.8)	0.38
	Diabetes, with complications	8/110	(7.3)	3,300/43,543	(7.6)	0.90
	Obesity	19/105	(18.1)	4,588/40,419	(11.4)	0.03
	Chronic neurological disorder	7/110	(6.4)	5,579/44,432	(12.6)	0.05
	Dementia	3/111	(2.7)	7,458/44,508	(16.8)	<0.001
	Mild liver disease	3/111	(2.7)	631/44,183	(1.4)	0.21
	Moderate/severe liver disease	6/111	(5.4)	858/43,378	(1.9)	0.008
	Malignancy	3/111	(2.7)	4,586/44,314	(10.4)	0.004
	Chronic haematological disease	4/111	(3.6)	1,923/44,266	(4.3)	1.0
	Rheumatological disease	6/111	(5.4)	4,867/44,138	(11.0)	0.06
	Malnutrition	5/105	(4.8)	1,129/41,811	(2.7)	0.21

466 ^aExcludes asthma. Abbreviations: IQR, Interquartile range.

467

468 **Table 2.** Presenting symptoms and observations, stratified by HIV status

Symptoms and Observations		HIV-positive n=115		HIV-negative n=47,424		P-value
Presenting symptoms, n (%)	Fever	94/114	(82.5)	30,623/47,039	(65.1)	<0.001
	Myalgia	26/96	(27.1)	6,349/34,806	(18.2)	0.03
	Headache	18/89	(20.2)	3,660/34,762	(10.5)	0.003
	Cough	88/114	(77.2)	30,997/47,031	(65.9)	0.01
	Dyspnoea	84/114	(73.7)	32,108/46,997	(68.3)	0.22
	Chest pain	24/101	(23.8)	5,221/38,269	(13.6)	0.003
	Sore throat	13/92	(14.1)	2,803/34,265	(8.2)	0.04
	Wheeze	5/94	(5.3)	3,289/36,209	(9.1)	0.28
	Rhinorrhoea	3/89	(3.4)	831/33,533	(2.5)	0.49
	Diarrhoea	25/100	(25.0)	7,271/39,305	(18.5)	0.10
	Nausea or vomiting	23/97	(23.7)	7,641/39,527	(19.3)	0.28
	Abdominal pain	13/96	(13.5)	4,026/38,105	(10.6)	0.34
	Fatigue	40/90	(44.4)	16,098/37,169	(43.3)	0.83
	Asymptomatic	0/115	(0)	887/47,424	(1.9)	0.28
Symptom group ^a , n (%)	Systemic	103/114	(90.4)	32,239/47,073	(68.5)	<0.001
	Respiratory	100/114	(87.7)	38,697/47,112	(82.1)	0.12
	Gastrointestinal	42/103	(40.8)	13,431/41,275	(32.5)	0.08
Symptom duration, median days (IQR)		5	(1, 9)	3	(0, 7)	0.001
Symptom duration ^b , n (%)	<3 days	108/115	(93.9)	41,247/47,055	(87.7)	0.13
	3-7 days	1/115	(0.9)	1,484/47,055	(3.2)	
	8-14 days	4/115	(3.5)	1,602/47,055	(3.4)	
	>14 days	2/115	(1.7)	2,722/47,055	(5.8)	
Presenting signs	Temperature, median °C (IQR)	37.8	(37.0, 38.6)	37.3	(36.6, 38.1)	0.002
	Fever ≥37.8 °C, n (%)	59/111	(53.2)	16,432/45,414	(36.2)	<0.001
	HR, median beats/min (IQR)	97	(82, 110)	90	(78, 105)	0.002
	Tachycardia ^c , n (%)	51/112	(45.5)	15,064/45,387	(33.2)	0.006
	RR, median breaths/min (IQR)	20	(18, 27)	21	(18, 26)	0.71
	Tachypnoea ^d , n (%)	50/107	(46.7)	23,284/45,165	(51.6)	0.32
	Hypoxia ^e /on oxygen, n (%)	50/108	(46.3)	23,948/45,199	(53.0)	0.16
	Infiltrates visible on CXR, n (%)	46/70	(65.7)	19,047/30,536	(62.4)	0.57
	Systolic BP, median mmHg (IQR)	130	(117, 143)	130	(114, 147)	0.90
Diastolic BP, median mmHg (IQR)	80	(68, 88)	74	(65, 84)	0.009	

469 ^aSystemic symptoms: ≥1 of fever, myalgia or headache; Respiratory symptoms: ≥1 of cough, dyspnoea,
470 chest pain, sore throat, wheeze; Gastrointestinal symptoms: ≥1 of: Diarrhoea, nausea, vomiting or
471 abdominal pain. ^bBased on the onset of symptoms relative to the date of admission, COVID-19
472 acquisition was classed as community (<3 days), indeterminate (3-7 days), probable hospital (8-14 days),
473 and definite hospital (>14 days). ^cDefined as HR >100 beats/min. ^dDefined as RR >20 breaths/min.
474 ^eDefined as SpO₂ <94% on air; proportions with SpO₂ <94% or on oxygen therapy at presentation were
475 30/108 (27.8%) and 32/105 (30.5%) respectively in the HIV-positive group, and 14,463/45,123 (32.1%)
476 and 14,203/44,093 (32.2%) in the HIV-negative group. Abbreviations: IQR, Interquartile range; HR,
477 Heart rate; RR, Respiratory rate; CXR, Chest X-ray; BP, Blood pressure.

478

479 **Table 3.** Presenting laboratory parameters, stratified by HIV status

Laboratory parameter	HIV positive n=115		HIV-negative n=47,424		P-value
Haemoglobin, median g/L (IQR)	129	(116, 144)	129	(113, 143)	0.77
Anaemia ^a , n (%)	37/101	(36.6)	15,549/40,450	(38.8)	0.65
WBC, median count x10 ⁹ /L (IQR)	6.6	(4.9, 9.0)	7.4	(5.4, 10.4)	0.01
Lymphocytes, median count x10 ⁹ /L (IQR)	1.0	(0.8, 1.5)	0.9	(0.6, 1.3)	<0.001
Lymphopenia ^b , n (%)	47/102	(46.1)	22,991/39,719	(57.9)	0.02
Platelets, median count x10 ⁶ /L (IQR)	200	(150, 263)	217	(164, 285)	0.04
Thrombocytopenia ^c , n (%)	24/99	(24.2)	7,431/39,698	(18.7)	0.16
Prothrombin time, median sec (IQR)	13.6	(11.0, 15.0)	13.2	(11.8, 15.0)	0.71
Creatinine, median µmol/L (IQR)	89	(72, 134)	86	(67, 121)	0.21
eGFR ^d , median ml/min/1.73m ² (IQR)	76	(52, 101)	73	(48, 97)	0.30
eGFR ml/min/1.73m ² , ≥60	67/95	(70.5)	24,758/38,782	(63.8)	0.15
n (%)					
30-59	18/95	(19.0)	9,774/38,782	(25.2)	
<30	10/95	(10.5)	4,250/38,782	(11.0)	
15-29	4/95	(4.2)	2,844/38,782	(7.3)	
<15	6/95	(6.3)	1,406/38,782	(3.6)	
ALT, median U/L (IQR)	27	(19, 44)	26	(17, 43)	0.28
ALT >40 U/L, n (%)	26/85	(30.6)	8,452/30,443	(27.8)	0.56
Glucose, median mmol/L (IQR)	6.7	(5.8, 9.8)	6.8	(5.8, 8.9)	0.63
Hyperglycaemia ^e , n (%)	10/52	(19.2)	2,900/19,522	(14.9)	0.38
C-reactive protein, median mg/L (IQR)	110	(51, 200)	83	(36, 157)	0.02

480 ^aDefined as haemoglobin <130 g/L in males and <115 g/L in females. ^bDefined as lymphocyte count
481 <1.0 x10⁹/L. ^cDefined as platelet count <150 x10⁶/L. ^dBased on the Modification of Diet in Renal
482 Disease (MDRD) formula where eGFR (mL/min/1.73 m²) = 175 × (Scr/88.4)^{-1.154} × (Age)^{-0.203} ×
483 (0.742 if female) × (1.212 if Black ethnicity). ^eDefined as glucose >11 mmol/L. Abbreviations: IQR,
484 Interquartile range; Abbreviations: IQR, Interquartile range; WBC, White blood cells; eGFR,
485 estimated glomerular filtration rate; ALT, alanine transaminase.

486

487 **Table 4.** Cox proportional hazards model of the association between HIV status and day-28
488 mortality

HIV-positive versus HIV-negative	Hazard ratio	95% CI	P-value
Unadjusted	0.74	0.50-1.09	0.12
Adjusted for sex	0.71	0.48-1.05	0.08
Adjusted for ethnicity	0.77	0.52-1.15	0.21
Adjusted for age	1.39	0.94-2.09	0.10
Adjusted for age and sex	1.39	0.93-2.08	0.11
Adjusted for sex, ethnicity, age, baseline date, and indeterminate/probable hospital acquisition of COVID-19	1.49	0.99-2.25	0.06
Adjusted for sex, ethnicity, age, baseline date, indeterminate/probable hospital acquisition of COVID-19, and 10 comorbidities ^a	1.49	0.99-2.26	0.06
Adjusted for sex, ethnicity, age, baseline date, indeterminate/probable hospital acquisition of COVID-19, 10 comorbidities ^a , and hypoxia at presentation ^b	1.62	1.06-2.46	0.02
Adjusted for sex, ethnicity, age, baseline date, indeterminate/probable hospital acquisition of COVID-19, 10 comorbidities ^a and hypoxia/ receiving oxygen at presentation ^b	1.63	1.07- 2.48	0.02

489 ^aThe model adjusted for the following comorbidities: chronic cardiac disease, chronic
490 pulmonary disease, chronic renal disease, diabetes, obesity, chronic neurological disorder,
491 dementia. liver disease, malignancy, and chronic haematological disease. ^bHypoxia was
492 defined as SpO₂ <94% on air; a record of hypoxia or receiving oxygen at presentation were
493 used as an indicator of disease severity.
494

495 **Table 5.** Characteristics of patients with HIV, stratified by outcome at day 28, selected
496 variables^a

Characteristic	Died n=26	Alive n=89	P-value
Age, median years (IQR)	58 (52, 72)	54.5 (49, 60)	0.07
Age group, n (%)			0.06
<40	1/24 (4.2)	6/89 (6.7)	
40-49	4/24 (16.7)	22/89 (24.7)	
50-59	10/24 (41.7)	37/89 (41.6)	
60-69	3/24 (12.5)	20/89 (22.5)	
≥70	6/24 (25.0)	4/89 (4.5)	
ART recorded, n (%)	22/26 (84.6)	83/89 (93.3)	0.17
Type of comorbidities, n (%)			
Chronic pulmonary disease ^b	0/26 (0)	12/88 (13.6)	0.05
Diabetes, with complications	5/26 (19.2)	3/84 (3.6)	0.02
Obesity	8/24 (33.3)	11/81 (13.6)	0.03
Presenting symptoms, n (%)			
Cough	22/25 (88.0)	66/89 (74.2)	0.15
Diarrhoea	8/22 (36.4)	17/78 (21.8)	0.16
Symptom group, n (%)			
Respiratory ^c	24/25 (96.0)	76/89 (85.4)	0.15
Presenting signs			
HR, median beats/min (IQR)	106 (96, 120)	93 (80, 108)	<0.001
Tachycardia ^d , n (%)	16/25 (64.0)	35/87 (40.2)	0.04
RR, median breaths/min (IQR)	26 (19, 30)	20 (18, 24)	0.02
Tachypnoea ^e , n (%)	15/23 (65.2)	35/84 (41.7)	0.05
Hypoxia ^f /on oxygen, n (%)	18/24 (75.0)	32/84 (38.1)	0.001
Diastolic BP, median mmHg (IQR)	70 (62, 81)	81 (69, 89)	0.04
WBC, median count x10 ⁹ /L (IQR)	7.8 (5.5, 10.9)	5.7 (4.7, 8.7)	0.02
Laboratory parameters			
eGFR ^g , median ml/min/1.73m ² (IQR)	72 (51, 87)	78 (58, 102)	0.12
Glucose, median mmol/L (IQR)	10.3 (6.4, 12.3)	6.4 (5.8, 8.3)	0.06
Hyperglycaemia ^h , n (%)	5/13 (38.5)	5/39 (12.8)	0.10
C-reactive protein, median mg/L (IQR)	203 (103, 306)	92 (42, 149)	<0.001
Interventions, n (%)			
Oxygen therapy during admission	21/26 (80.8)	51/84 (60.7)	0.06
Critical care admission	17/26 (65.4)	18/89 (20.2)	<0.001
Non-invasive ventilation	9/24 (37.5)	15/83 (18.1)	<0.001
Invasive ventilation	13/26 (50.0)	6/88 (6.8)	<0.001

497 ^aA full list of demographic and clinical characteristics is shown in Supplementary Table 6. ^bExcludes
498 asthma. ^cRespiratory symptoms: ≥1 of cough, dyspnoea, chest pain, sore throat, wheeze. ^dDefined as
499 HR >100 beats/minute. ^eDefined as RR >20 breaths/min. ^fDefined as SpO₂ <94% on air. ^gBased on
500 the Modification of Diet in Renal Disease (MDRD) formula where eGFR (mL/min/1.73 m²) = 175 ×
501 (Scr/88.4)^{-1.154} × (Age)^{-0.203} × (0.742 if female) × (1.212 if Black ethnicity). ^hDefined as glucose
502 >11 mmol/L. Abbreviations: IQR, Interquartile range; ART, Antiretroviral therapy; HR, Heart rate;
503 RR, Respiratory rate; BP, Blood pressure; WBC, White blood cells; eGFR, estimated glomerular
504 filtration rate.

505

506 **LEGENDS TO FIGURES**

507 **Figure 1.** Flowchart of study participants.

508 **Figure 2.** Kernel density plot of age distribution of study participants stratified by HIV status.

509 **Figure 3.** Interventions during hospitalisation by HIV status.

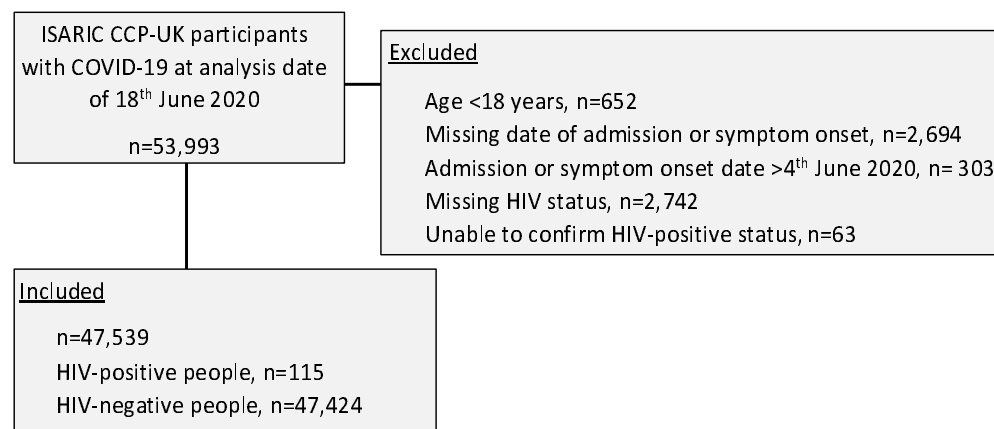
510 **Figure 4.** Kaplan Meier survival graphs, stratified by HIV status, sex and age group. P values

511 represent log-rank tests. Plots D, E and F include only individuals from age groups <50 years,

512 50-59 years and 60-79 years.

513

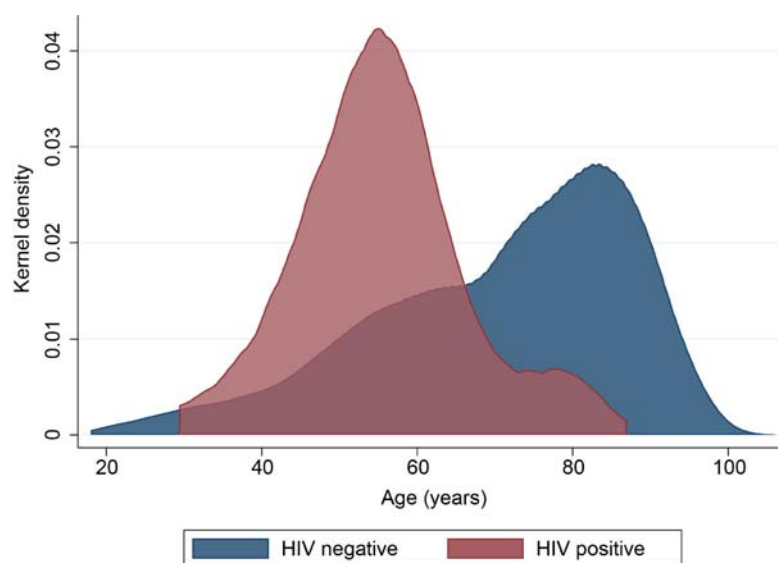
514 **Figure 1.** Flowchart of study participants



515

516

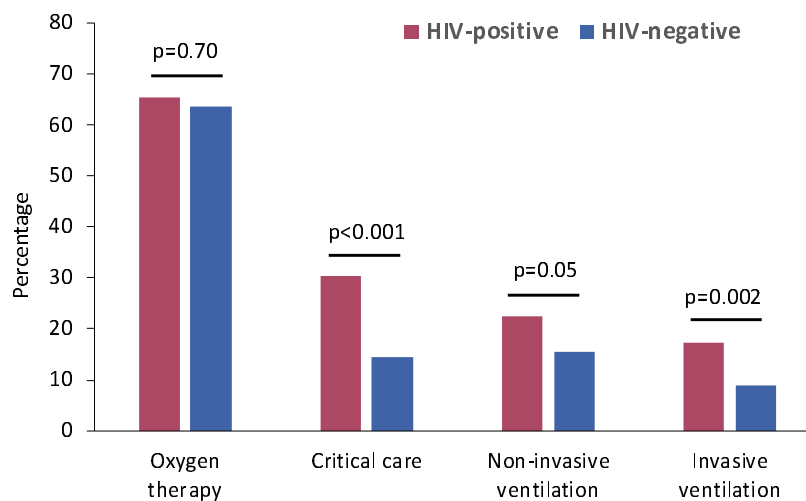
517 **Figure 2.** Kernel density plot of age distribution of study participants stratified by HIV status.



518

519

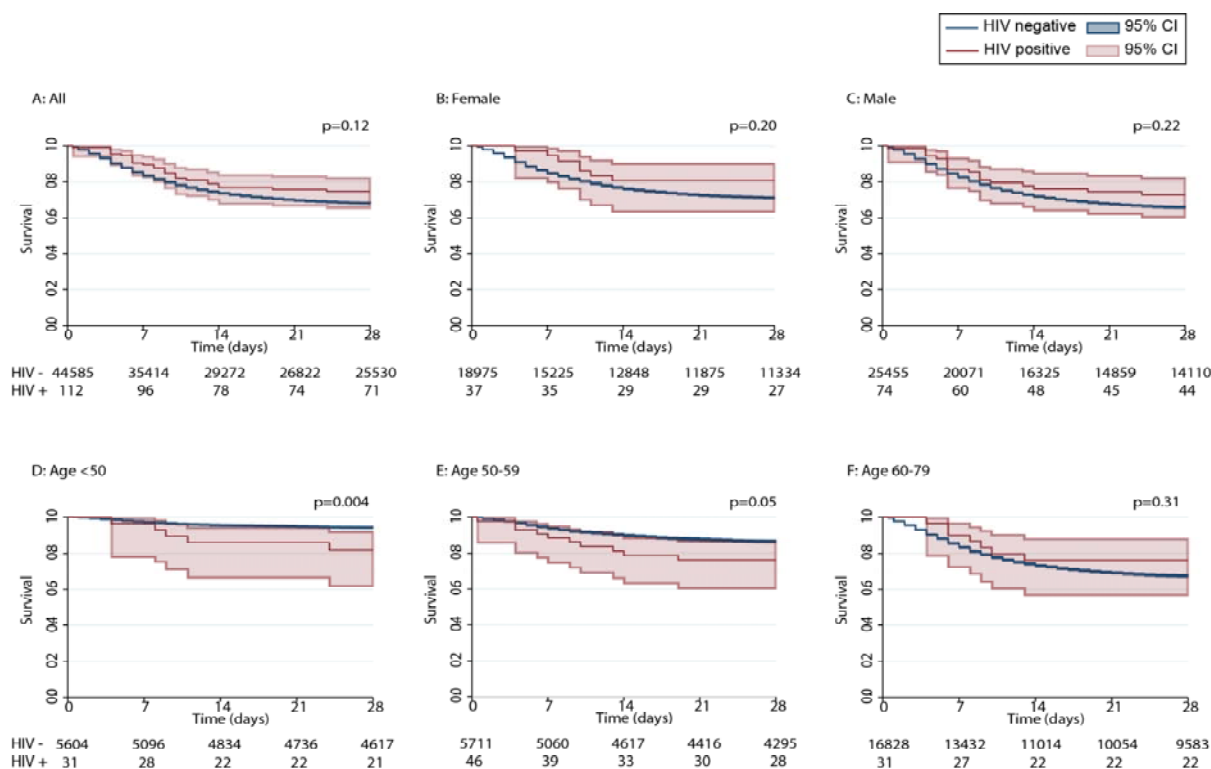
520 **Figure 3.** Interventions during hospitalisation by HIV status.



HIV-positive	72/110	35/115	24/107	19/109
HIV-negative	28,869/45,326	6,699/46,452	7,019/45,117	3,997/45,209

521

522 **Figure 4.** Kaplan Meier survival graphs, stratified by HIV status, sex and age group. P values
 523 represent log-rank tests. Plots D, E and F include only individuals from age groups <50 years,
 524 50-59 years and 60-79 years.
 525



526

527

528 **ETHICAL CONSIDERATIONS**

529 Ethical approval was given by the South Central - Oxford C Research Ethics Committee in
530 England (Ref 13/SC/0149), the Scotland A Research Ethics Committee (Ref 20/SS/0028),
531 and the WHO Ethics Review Committee (RPC571 and RPC572, 25 April 2013

532

533 **DATA AVAILABILITY**

534 The CO-CIN data were collated by ISARIC4C Investigators. ISARIC4C welcomes
535 applications for data and material access through our Independent Data and Material Access
536 Committee (<https://isaric4c.net>).

537

538 **ACKNOWLEDGEMENTS**

539 This work uses data provided by patients and collected by the NHS as part of their care and
540 support #DataSavesLives. We are extremely grateful to the 2,648 frontline NHS clinical and
541 research staff and volunteer medical students, who collected the data in challenging
542 circumstances, and the generosity of the participants and their families for their individual
543 contributions in these difficult times. We also acknowledge the support of Jeremy J Farrar,
544 Nahoko Shindo, Devika Dixit, Nipunie Rajapakse, Piero Olliaro, Lyndsey Castle, Martha
545 Buckley, Debbie Malden, Katherine Newell, Kwame O'Neill, Emmanuelle Denis, Claire
546 Petersen, Scott Mullaney, Sue MacFarlane, Chris Jones, Nicole Maziere, Katie Bullock,
547 Emily Cass, William Reynolds, Milton Ashworth, Ben Catterall, Louise Cooper, Terry
548 Foster, Paul Matthew Ridley, Anthony Evans, Catherine Hartley, Chris Dunn, Debby Sales,
549 Diane Latawiec, Erwan Trochu, Eve Wilcock, Innocent Gerald Asiimwe, Isabel Garcia-
550 Dorival, J. Eunice Zhang, Jack Pilgrim, Jane A Armstrong, Jordan J. Clark, Jordan Thomas,
551 Katharine King, Katie Alexandra Ahmed, Krishanthi S Subramaniam, Lauren Lett, Laurence
552 McEvoy, Libby van Tonder, Lucia Alicia Livoti, Nahida S Miah, Rebecca K. Shears,
553 Rebecca Louise Jensen, Rebekah Penrice-Randal, Robyn Kiy, Samantha Leanne Barlow,
554 Shadia Khandaker, Soeren Metelmann, Tessa Prince, Trevor R Jones, Benjamin Brennan,
555 Agnieska Szemiel, Siddharth Bakshi, Daniella Lefteri, Maria Mancini, Julien Martinez,
556 Angela Elliott, Joyce Mitchell, John McLauchlan, Aislynn Taggart, Oslem Dincarslan,
557 Annette Lake, Claire Petersen, and Scott Mullaney.

558

559 **FINANCIAL SUPPORT**

560 AS is supported by a National Institute of Health Research (NIHR) Academic Clinical
561 Lectureship at the University of Liverpool. LT is supported by the Wellcome Trust (grant

562 number 205228/Z/16/Z). The work is supported by grants from: the NIHR [award CO-CIN-
563 01]; the Medical Research Council [grant MC_PC_19059]; the NIHR Health Protection
564 Research Units (HPRU) in i) Emerging and Zoonotic Infections (NIHR200907) at University
565 of Liverpool in partnership with Public Health England (PHE) and in collaboration with the
566 Liverpool School of Tropical Medicine and the University of Oxford, and ii) Blood Borne
567 and Sexually Transmitted Infections at University College London UCL in partnership with
568 PHE and in collaboration with the London School of Hygiene and Tropical Medicine; the
569 Wellcome Trust and the Department for International Development [215091/Z/18/Z], and the
570 Bill and Melinda Gates Foundation [OPP1209135]. The Liverpool Experimental Cancer
571 Medicine Centre provided infrastructure support for this research (Grant Reference:
572 C18616/A25153). The views expressed are those of the authors and not necessarily those of
573 the DHSC, DID, NIHR, MRC, Wellcome Trust or PHE.

574

575 **DISCLOSURES**

576 AMG: Personal fees from Roche Pharma Research & Early Development (pRED), consulting
577 honoraria from Gilead, Janssen, and ViiV Healthcare, and research funding from Roche
578 pRED, Gilead, Janssen and ViiV Healthcare, outside of the work presented in this article. GV:
579 research funding from ViiV Healthcare outside of the work presented in this article. CAS:
580 personal fees from Gilead Sciences and ViiV Healthcare for participation in Data Safety and
581 Monitoring Boards, membership of Advisory Boards and for preparation of educational
582 materials, outside of the work presented in this article. MGS: grants from DHSC NIHR UK,
583 MRC UK, and HPRU in Emerging and Zoonotic Infections during the conduct of the study;
584 other from Integrum Scientific LLC (Greensboro, NC, US), outside the submitted work. The
585 remaining authors declare no competing interests, no financial relationships with any
586 organisations that might have an interest in the submitted work in the previous three years,
587 and no other relationships or activities that could appear to have influenced the submitted
588 work.

589

590 **References**

- 591 1. Docherty AB, Harrison EM, Green CA, et al. Features of 20 133 UK patients in hospital
592 with covid-19 using the ISARIC WHO Clinical Characterisation Protocol: prospective
593 observational cohort study. *BMJ* 2020;369:m1985.
- 594 2. Zhou F, Yu T, Du R, et al. Clinical course and risk factors for mortality of adult inpatients
595 with COVID-19 in Wuhan, China: a retrospective cohort study. *Lancet.* 2020;395:1054-
596 1062.
- 597 3. Cevik M, Bamford CGG, Ho A. COVID-19 pandemic-a focused review for clinicians.
598 *Clin Microbiol Infect* 2020;26:842-847.
- 599 4. Richardson S, Hirsch JS, Narasimhan M, et al. Presenting characteristics, comorbidities,
600 and outcomes among 5700 patients hospitalized with COVID-19 in the New York City
601 area. *JAMA* 2020;323:2052-2059.
- 602 5. Gao Y, Chen Y, Liu M, Shi S, Tian J. Impacts of immunosuppression and
603 immunodeficiency on COVID-19: A systematic review and meta-analysis. *J Infect.*
604 2020;S0163-4453:30294-2.
- 605 6. May MT, Gompels M, Delpech V, et al. Impact on life expectancy of HIV-1 positive
606 individuals of CD4+ cell count and viral load response to antiretroviral therapy. *AIDS.*
607 2014;28:1193-1202.
- 608 7. Lederman MM, Funderburg NT, Sekaly RP, Klatt NR, Hunt PW. Residual immune
609 dysregulation syndrome in treated HIV infection. *Adv Immunol.* 2013;119:51-83.
- 610 8. Ho HE, Peluso MJ, Margus C, et al. Clinical outcomes and immunologic characteristics
611 of Covid-19 in people with HIV. *J Infect Dis.* 2020;jiaa380.
- 612 9. Del Amo J, Polo R, Moreno S, et al. Incidence and Severity of COVID-19 in HIV-
613 Positive Persons Receiving Antiretroviral Therapy: A Cohort Study. *Ann Intern Med.*
614 2020;10.7326/M20-3689.
- 615 10. Waters L, Rockstroh JK. COVID-19 research: an opinion piece. *HIV Med.*
616 2020;10.1111/hiv.12913.
- 617 11. De Francesco D, Verboeket SO, Underwood J, et al. Patterns of co-occurring
618 comorbidities in people living with HIV. *Open Forum Infect Dis.* 2018;5:ofy272.
- 619 12. Patel AP, Paranjpe MD, Kathiresan NP, Rivas MA, Khera AV. Race, socioeconomic
620 deprivation, and hospitalization for COVID-19 in English participants of a national
621 biobank. *Int J Equity Health.* 2020;19:114.

- 622 13. Härter G, Spinner CD, Roider J, Bickel M, Krznaric I, Grunwald S et al. COVID-19 in
623 people living with human immunodeficiency virus: a case series of 33 patients. *Infection*.
624 2020;1-6
- 625 14. Gervasoni C, Meraviglia P, Riva A, et al. Clinical features and outcomes of HIV patients
626 with coronavirus disease 2019. *Clin Infect Dis*. 2020;ciaa579.
- 627 15. Blanco JL, Ambrosioni J, Garcia F, et al. COVID-19 in patients with HIV: clinical case
628 series. *Lancet HIV*. 2020;7:e314-e316.
- 629 16. Vizcarra P, Pérez-Elías MJ, Quereda C, et al. Description of COVID-19 in HIV-infected
630 individuals: a single-centre, prospective cohort. *Lancet HIV*. 2020;S2352-3018:30164-8.
- 631 17. Childs K, Post FA, Norcross C, et al. Hospitalized patients with COVID-19 and HIV: a
632 case series. *Clin Infect Dis*. 2020;ciaa657.
- 633 18. Cooper TJ, Woodward BL, Alom S, Harky A. Coronavirus disease 2019 (COVID-19)
634 outcomes in HIV/AIDS patients: a systematic review. *HIV Med*. 2020;10.1111/hiv.1291.
- 635 19. Mirzaei H, McFarland W, Karamouzian M and Sharifi H. COVID-19 among people
636 living with HIV: A systematic review. Preprint. medRxiv.2020;07.11.20151688.
- 637 20. Karmen-Tuohy S, Carlucci PM, Zervou FN, et al. Outcomes among HIV-positive patients
638 hospitalized with COVID-19. *J Acquir Immune Defic Syndr*.
639 2020;10.1097/QAI.0000000000002423.
- 640 21. Sigel K, Swartz T, Golden E, et al. Covid-19 and people with HIV infection: Outcomes
641 for hospitalized patients in New York City. *Clin Infect Dis*. 2020;ciaa880.
- 642 22. Meyerowitz EA, Kim AY, Ard KL, et al. Disproportionate burden of COVID-19 among
643 racial minorities and those in congregate settings among a large cohort of people with
644 HIV. *AIDS*. 2020;10.1097/QAD.0000000000002607.
- 645 23. Davies MA. HIV and risk of COVID-19 death: a population cohort study from the
646 Western Cape Province, South Africa. Preprint. medRxiv. 2020;2020.07.02.20145185
- 647 24. ISARIC4C. ISARIC Coronavirus Clinical Characterisation Consortium. 2020.
648 <https://isaric4c.net/>.
- 649 25. Harrison EM, Docherty AB, Barr B, et al. Ethnicity and outcomes from COVID-19: the
650 ISARIC CCP-UK prospective observational cohort study of hospitalised patients.
651 Preprint. SSRN.2020; 10.2139/ssrn.3618215
- 652 26. O'Halloran C, Sun S, Nash S, et al. HIV in the United Kingdom: Towards Zero 2030.
653 2019 report. London: Public Health England; 2019. Available at:
654 https://assets.publishing.service.gov.uk/government/uploads/system/uploads/attachment_

655 data/file/858559/HIV_in_the_UK_2019_towards_zero_HIV_transmissions_by_2030.pdf.

656 Accessed July 30, 2020

657 27. Roghmann MC, Warner J, Mackowiak PA. The relationship between age and fever
658 magnitude. *Am J Med Sci.* 2001;322:68–70.

659 28. Tay MZ, Poh CM, Rénia L, MacAry PA, Ng LF. The trinity of COVID-19: immunity,
660 inflammation and intervention. *Nat Rev Immunol.* 2020;20:363-374.

661 29. Connors JM, Levy JH. COVID-19 and its implications for thrombosis and
662 anticoagulation. *Blood.* 2020;135:2033-2040.

663 30. Insight START Study Group, Lundgren JD, Babiker AG, et al. Initiation of antiretroviral
664 therapy in early asymptomatic HIV infection. *N Engl J Med.* 2015;373:795-807.

665

666 **ISARIC 4C Investigators**

667 Consortium Lead Investigator: J Kenneth Baillie, Chief Investigator Malcolm G Semple

668 Co-Lead Investigator Peter JM Openshaw. ISARIC Clinical Coordinator Gail Carson.

669 Co-Investigators: Beatrice Alex, Benjamin Bach, Wendy S Barclay, Debby Bogaert, Meera

670 Chand, Graham S Cooke, Annemarie B Docherty, Jake Dunning, Ana da Silva Filipe, Tom

671 Fletcher, Christopher A Green, Ewen M Harrison, Julian A Hiscox, Antonia Ying Wai Ho,

672 Peter W Horby, Samreen Ijaz, Saye Khoo, Paul Klenerman, Andrew Law, Wei Shen Lim,

673 Alexander, J Mentzer, Laura Merson, Alison M Meynert, Mahdad Noursadeghi, Shona C

674 Moore, Massimo Palmarini, William A Paxton, Georgios Pollakis, Nicholas Price, Andrew

675 Rambaut, David L Robertson, Clark D Russell, Vanessa Sancho-Shimizu, Janet T Scott,

676 Louise Sigfrid, Tom Solomon, Shiranee Sriskandan, David Stuart, Charlotte Summers,

677 Richard S Tedder, Emma C Thomson, Ryan S Thwaites, Lance CW Turtle, Maria Zambon.

678 Project Managers Hayley Hardwick, Chloe Donohue, Jane Ewins, Wilna Oosthuyzen, Fiona

679 Griffiths. Data Analysts: Lisa Norman, Riinu Pius, Tom M Drake, Cameron J Fairfield,

680 Stephen Knight, Kenneth A Mclean, Derek Murphy, Catherine A Shaw. Data and

681 Information System Manager: Jo Dalton, Michelle Girvan, Egle Saviciute, Stephanie Roberts

682 Janet Harrison, Laura Marsh, Marie Connor. Data integration and presentation: Gary

683 Leeming, Andrew Law, Ross Hendry. Material Management: William Greenhalf, Victoria

684 Shaw, Sarah McDonald. Outbreak Laboratory Volunteers: Katie A. Ahmed, Jane A

685 Armstrong, Milton Ashworth, Innocent G Asimwe, Siddharth Bakshi, Samantha L Barlow,

686 Laura Booth, Benjamin Brennan, Katie Bullock, Benjamin WA Catterall, Jordan J Clark,

687 Emily A Clarke, Sarah Cole, Louise Cooper, Helen Cox, Christopher Davis, Oslem

688 Dincarslan, Chris Dunn, Philip Dyer, Angela Elliott, Anthony Evans, Lewis WS Fisher, Terry

689 Foster, Isabel Garcia-Dorival, William Greenhalf, Philip Gunning, Catherine Hartley,
690 Antonia Ho, Rebecca L Jensen, Christopher B Jones, Trevor R Jones, Shadia Khandaker,
691 Katharine King, Robyn T. Kiy, Chrysa Koukorava, Annette Lake, Suzannah Lant, Diane
692 Latawiec, L Lavelle-Langham, Daniella Lefteri, Lauren Lett, Lucia A Livoti, Maria Mancini,
693 Sarah McDonald, Laurence McEvoy, John McLauchlan, Soeren Metelmann, Nahida S Miah,
694 Joanna Middleton, Joyce Mitchell, Shona C Moore, Ellen G Murphy, Rebekah Penrice-
695 Randal, Jack Pilgrim, Tessa Prince, Will Reynolds, P. Matthew Ridley, Debby Sales, Victoria
696 E Shaw, Rebecca K Shears, Benjamin Small, Krishanthi S Subramaniam, Agnieska Szemiel,
697 Aislynn Taggart, Jolanta Tanianis, Jordan Thomas, Erwan Trochu, Libby van Tonder, Eve
698 Wilcock, J. Eunice Zhang. Local Principal Investigators: Kayode Adeniji, Daniel Agranoff,
699 Ken Agwuh, Dhiraj Ail, Ana Alegria, Brian Angus, Abdul Ashish, Dougal Atkinson,
700 Shahedal Bari, Gavin Barlow, Stella Barnass, Nicholas Barrett, Christopher Bassford, David
701 Baxter, Michael Beadsworth, Jolanta Bernatoniene, John Berridge , Nicola Best , Pieter
702 Bothma, David Brealey, Robin Brittain-Long, Naomi Bulteel, Tom Burden , Andrew
703 Burtenshaw, Vikki Caruth, David Chadwick, Duncan Chambler, Nigel Chee, Jenny Child,
704 Srikanth Chukkambotla, Tom Clark, Paul Collini, Catherine Cosgrove, Jason Cupitt, Maria-
705 Teresa Cutino-Moguel, Paul Dark, Chris Dawson, Samir Dervisevic, Phil Donnison, Sam
706 Douthwaite, Ingrid DuRand, Ahilanadan Dushianthan, Tristan Dyer, Cariad Evans , Chi
707 Eziefula, Chrisopher Fegan, Adam Finn, Duncan Fullerton, Sanjeev Garg, Sanjeev Garg,
708 Atul Garg, Jo Godden, Arthur Goldsmith, Clive Graham, Elaine Hardy, Stuart Hartshorn,
709 Daniel Harvey, Peter Havalda, Daniel B Hawcutt, Maria Hobrok, Luke Hodgson, Anita
710 Holme, Anil Hormis, Michael Jacobs, Susan Jain, Paul Jennings, Agilan Kaliappan, Vidya
711 Kasipandian, Stephen Kegg, Michael Kelsey, Jason Kendall, Caroline Kerrison, Ian Kerslake,
712 Oliver Koch, Gouri Koduri, George Koshy , Shondipon Laha, Susan Larkin, Tamas Leiner,
713 Patrick Lillie, James Limb, Vanessa Linnett, Jeff Little, Michael MacMahon, Emily
714 MacNaughton, Ravish Mankregod, Huw Masson , Elijah Matovu, Katherine McCullough,
715 Ruth McEwen , Manjula Meda, Gary Mills , Jane Minton, Mariyam Mirfenderesky, Kavya
716 Mohandas, Quen Mok, James Moon, Elinoor Moore, Patrick Morgan, Craig Morris,
717 Katherine Mortimore, Samuel Moses, Mbiye Mpenge, Rohinton Mulla, Michael Murphy,
718 Megan Nagel, Thapas Nagarajan, Mark Nelson, Igor Otahal, Mark Pais, Selva
719 Panchatsharam, Hassan Paraiso, Brij Patel, Justin Pepperell, Mark Peters, Mandeep Phull ,
720 Stefania Pintus, Jagtur Singh Pooni, Frank Post, David Price, Rachel Prout, Nikolas Rae,
721 Henrik Reschreiter, Tim Reynolds, Neil Richardson, Mark Roberts, Devender Roberts,
722 Alistair Rose, Guy Rousseau, Brendan Ryan, Taranprit Saluja, Aarti Shah, Prad Shanmuga,

723 Anil Sharma, Anna Shawcross, Jeremy Sizer, Richard Smith, Catherine Snelson, Nick
724 Spittle, Nikki Staines , Tom Stambach, Richard Stewart, Pradeep Subudhi, Tamas Szakmany,
725 Kate Tatham, Jo Thomas, Chris Thompson, Robert Thompson, Ascanio Tridente, Darell
726 Tupper - Carey, Mary Twagira, Andrew Ustianowski, Nick Vallotton, Lisa Vincent-Smith,
727 Shico Visuvanathan , Alan Vuylsteke, Sam Waddy, Rachel Wake, Andrew Walden, Ingeborg
728 Welters, Tony Whitehouse, Paul Whittaker, Ashley Whittington, Meme Wijesinghe, Martin
729 Williams, Lawrence Wilson, Sarah Wilson, Stephen Winchester, Martin Wiselka, Adam
730 Wolverson, Daniel G Wooton, Andrew Workman, Bryan Yates, Peter Young.