

## **Retrospective study on the clinicogenomic characteristics of *EGFR* mutant and wildtype NSCLC**

Chirag Dhar, Departments of Medicine and Molecular Medicine,

UC San Diego School of Medicine

[cdhar@ucsd.edu](mailto:cdhar@ucsd.edu) [chirag@worldviewofmedicine.org](mailto:chirag@worldviewofmedicine.org)

## Abstract

### Background

Lung cancer is among the leading causes of mortality. Nearly 90% of all lung cancers are histologically classified as non-small cell lung cancer (NSCLC). A subset of these tumors harbor mutations on the epidermal growth factor receptor gene (*EGFR*) and such patients are candidates for targeted therapy with *EGFR* tyrosine kinase inhibitors (EGFR TKIs).

### Aim

To compare and contrast the clinicogenomic characteristics of *EGFR* mutant and wildtype NSCLC.

### Methods and results

A retrospective cohort study design was used to analyze publicly available data on cBioPortal.org. Patients with *EGFR* mutations were more likely to be female, of Asian ethnicity, never-smokers, and diagnosed with lung adenocarcinoma. Metastasis to the pleura, pleural fluid, and liver were common in patients with *EGFR* mutant NSCLC. On the other hand, lymph node, brain and adrenal gland metastases were more common in patients with other mutations. While the median overall survival was about the same in the two groups, progression free survival was significantly shorter in the *EGFR* mutant group. The mutational landscape was significantly different in the two groups with *EGFR* mutant NSCLCs having a lower mutational burden. Differences in copy number alterations between the two groups were also noted.

### Conclusions

The clinicogenomic profiles of *EGFR* mutant and *EGFR* wildtype significantly differ. Further studies on these differences and underlying mechanisms are likely to lead to new “druggable” targets that overcome EGFR TKI resistance.

## Introduction

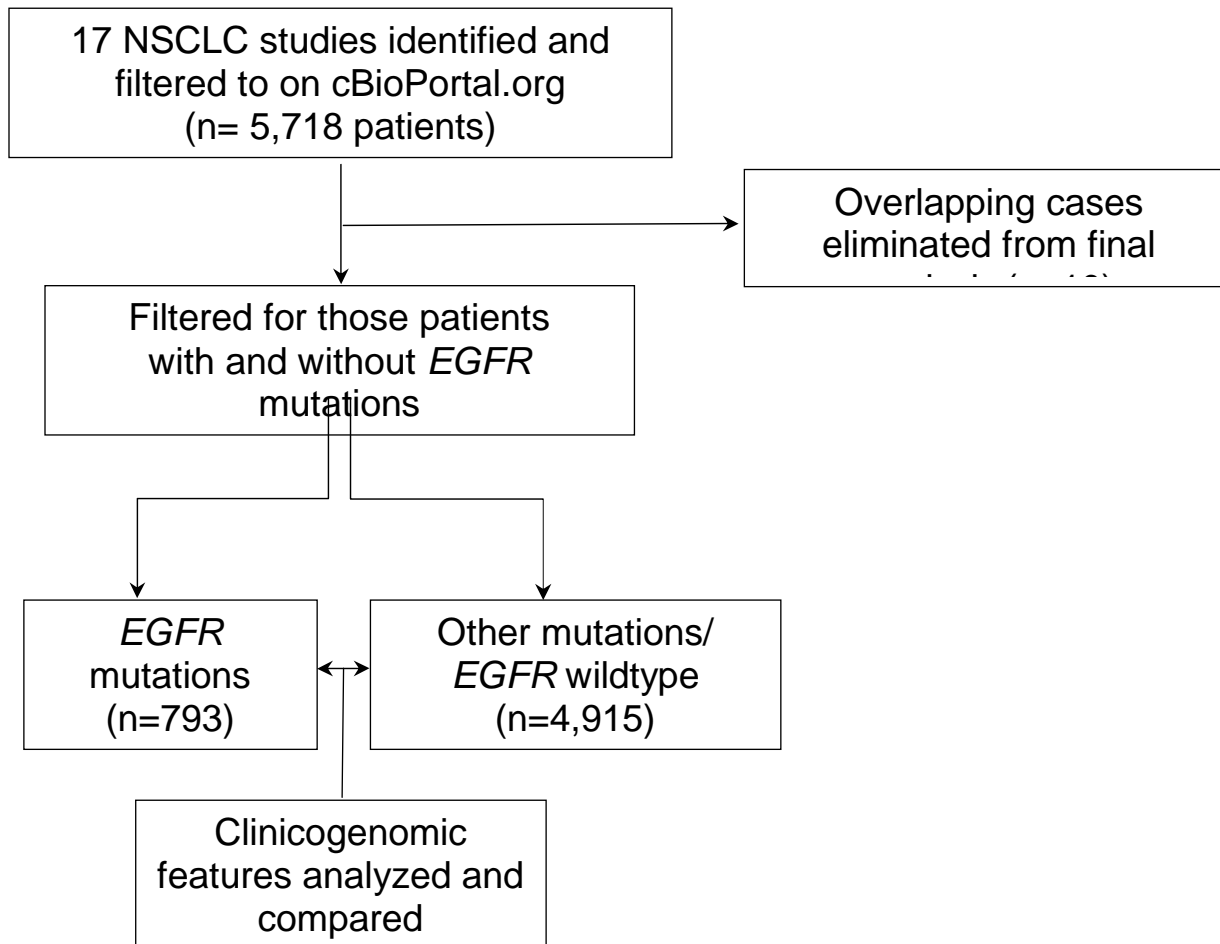
Neoplasms of the lung are one of the leading causes of cancer in both men and women and are a major cause of mortality in the American population with an anticipated 135,000 deaths in 2020 (1). To put this in perspective, this number is only slightly less than the number of lives lost to the COVID pandemic in the USA as of August 6, 2020. 80% of all lung cancers are further categorized as non-small cell lung cancer (NSCLC) (2). Major histological subtypes of NSCLC include lung adenocarcinoma, squamous cell carcinoma large cell carcinoma, adenosquamous cell carcinoma, and sarcomatoid carcinoma (3). Recent advances in the clinicogenomics of lung cancer have uncovered the role of epidermal growth factor receptor (*EGFR*) mutations in a significant proportion of NSCLC patients (4)(5). *EGFR* is a member of the receptor tyrosine kinase family and plays an important role in cellular growth, proliferation and signaling. Certain somatic *EGFR* mutations observed in a subset of NSCLC patients cause overamplification leading to constant activation and uncontrolled cell division (3). Exons 18, 19, 20 and 21 of the *EGFR* gene are often the site of these mutations (6)(7)(8). Some of the commonest *EGFR* mutations include inframe deletions of exon 19 and the exon 21 L858R point mutation (3). These mutations are present in nearly a third of all lung adenocarcinomas and predict efficacy to *EGFR* tyrosine kinase inhibitors (TKIs) such as gefitinib and erlotinib(9)(10). Patients receiving TKIs have improved clinical outcomes as compared to those patients that receive conventional chemotherapy (11)(12)(6)(13).

The establishment of cBioPortal.org(14)(15), a central resource for patient and sample level clinicogenomic data in cancer, allows for in-depth analyses and comparisons of various cancer subtypes. In this retrospective study, the clinicogenomic characteristics of *EGFR* mutant and *EGFR* wildtype NSCLC were compared and contrasted.

## Study design and methodology

The following schema describes the methods of data collection and analysis in this retrospective cohort study.

References to studies utilized are provided here (16)(17)(18)(19)(20)(21)(22)(23)(24)(25)(26)(27)(28).



Briefly, 17 cBioPortal.org NSCLC studies representing 5,718 patients were identified and filtered to on September 10<sup>th</sup>, 2020. Of these, 803 were categorized to have *EGFR* mutations while the remaining 4,925 were not. A further analysis on the patient overlap function of cBioPortal revealed 10 cases that were present in both groups. These 10 patients possibly represent multiple samples that had different mutational patterns. For the purpose of this study, these overlapping samples were not analyzed. Subsequently, clinicogenomic features of the two subgroups were compared utilizing the various functions available on cBioPortal. These analyses included a comparison of survival, staging, mutations and copy number variations. Appropriate statistical tests/graphical representations as run by cBioPortal are included in the results. P- and Q-values

It is made available under a [CC-BY 4.0 International license](https://creativecommons.org/licenses/by/4.0/).

where appropriate are mentioned. The phrase “*EGFR* wildtype” and “other mutations” are used interchangeably to represent the sub-group that did not harbor *EGFR* mutations.

## Results

### ***EGFR* mutations were more common in women, patients of Asian ethnicity, never smokers and those with lung adenocarcinoma.**

Clinical characteristics of patients with *EGFR* mutations and those with other mutations (*EGFR* wildtype) were compared and are described in detail in table 1. The median age of diagnosis was slightly lower in patients with *EGFR* mutations. These patients were more likely to be never-smokers, women, of Asian ethnicity and diagnosed with lung adenocarcinoma. These findings are in concert with those of other studies (5)(10)(29)(30)(31) on *EGFR* mutant NSCLC and suggest this cohort of more than five thousand patients is likely representative of differences seen in individual studies.

| Clinical characteristic          | <i>EGFR</i> | Other mutations | P value |
|----------------------------------|-------------|-----------------|---------|
| Total number of subjects (%)     | 793 (15.8)  | 4195 (84.2)     | -       |
| Median age at diagnosis in years | 64          | 67              | <0.001  |
| Female sex (%)                   | 64.5        | 41.4            | <0.001  |
| Asian/Chinese ethnicity (%)      | 48.1        | 7.8             | <0.001  |
| Never smokers (%)                | 38.9        | 7.9             | <0.001  |
| Lung adenocarcinoma (%)          | 93.8        | 62.9            | <0.001  |

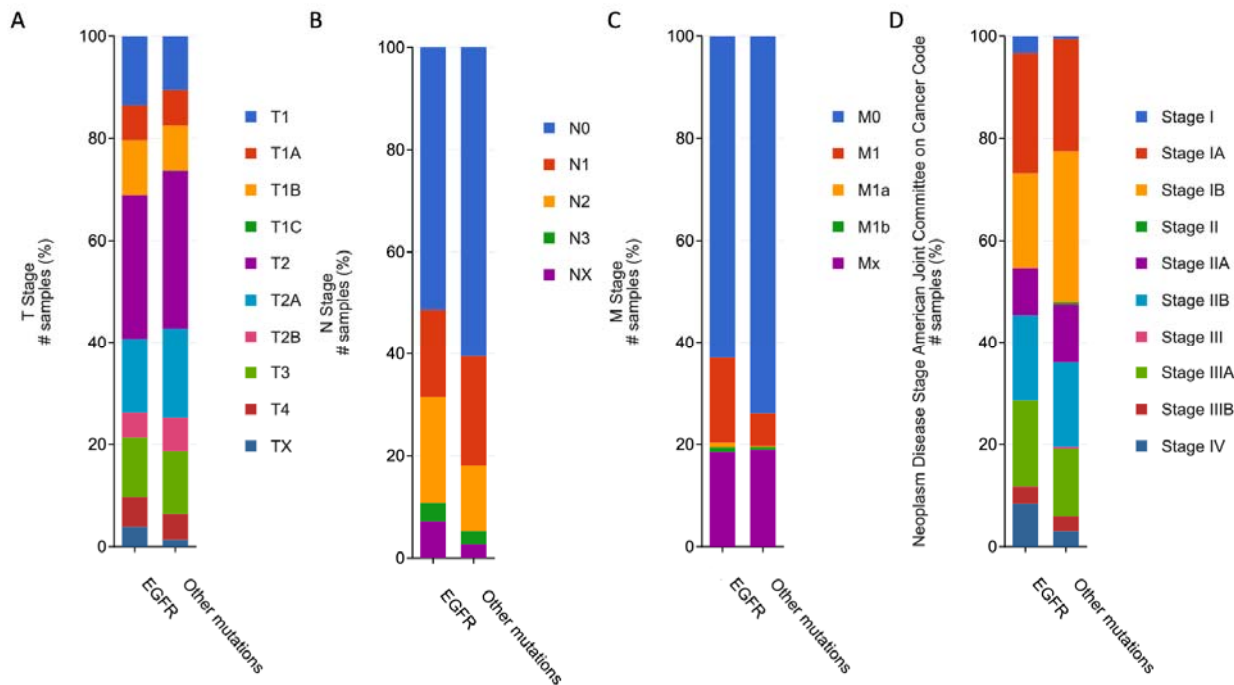
**Table 1: Clinical characteristics of patients in the two subgroups.** Median age in *EGFR* group was 64 years (Range: 36-92, 25<sup>th</sup> percentile- 57, 75<sup>th</sup> percentile- 71) while in the other mutations group it was 67 years (Range: 38-93, 25<sup>th</sup> percentile- 59, 75<sup>th</sup> percentile- 73) with an absolute p-value by Kruskal Wallis test being  $6.25 \times 10^{-10}$  and q-value of  $6.07 \times 10^{-9}$ . A chi-squared statistic of 155.708 was obtained for the comparison of sex distribution in the two groups (p-value was  $<10^{-6}$ ). Ethnicity data was available for 280 and 2047 patients in the two groups with a significantly higher percentage being of Asian/Chinese ethnicity in the *EGFR* group (Chi-squared test statistic was 397.8601, p-value  $<10^{-6}$ ). Smoking histories of 403 and 2221 patients was available in the two subgroups with never-smokers being significantly higher in the *EGFR* group (Chi-squared test statistic

It is made available under a [CC-BY 4.0 International license](https://creativecommons.org/licenses/by/4.0/).

was 296.4889, p-value  $<10^{-6}$ ). 744/805 *EGFR* cases and 3096/4915 other cases were lung adenocarcinoma (Chi-squared test statistic was 2755511, p-value  $<10^{-6}$ ) \*all p-values reported to third-decimal place in table

### ***EGFR* mutant cancers were more likely to metastasize than cancers with other mutations.**

Figure 1 shows the differences in TNM and American Joint Committee on Cancer Code staging between *EGFR* mutant NSCLC and tumors with other mutations. *EGFR* mutant cancers were more likely to involve lymph nodes and to metastasize. Additionally, *EGFR* mutant tumors were more likely to be diagnosed as stage II, III and IV as compared to tumors with other mutations.



**Figure 1: Graphical representation of differences in staging between *EGFR* mutant NSCLC and tumors with other mutations. A) Differences in T stage. Non-significant difference (Chi-squared test p-value 0.393) B) Differences in N stage. Non-significant difference (Chi-squared test p-value 0.027) C) Differences in M stage. Nonsignificant difference (Chi-squared test p-value 0.254) D) Differences in American Joint Committee on Cancer Code staging. Significant difference with Chi-squared test p-value of 0.00074**

Metastasis to pleura, pleural fluid and liver were common in patients with *EGFR* mutant NSCLC while metastasis to the lymph node, adrenal gland and brain were more commonly associated with other mutations. Metastatic samples collected were used as a proxy to indicate frequency and sites of metastases. Metastatic samples were more frequently collected in patients with *EGFR* mutations as indicated by figure 2A. Collected metastatic samples from pleura, pleural fluid and liver were common in patients with *EGFR* mutant NSCLC while metastatic samples from lymph nodes, adrenal gland and brain were common in patients with other mutations. These findings suggest a difference where *EGFR* mutant cancers are likely to metastasize.

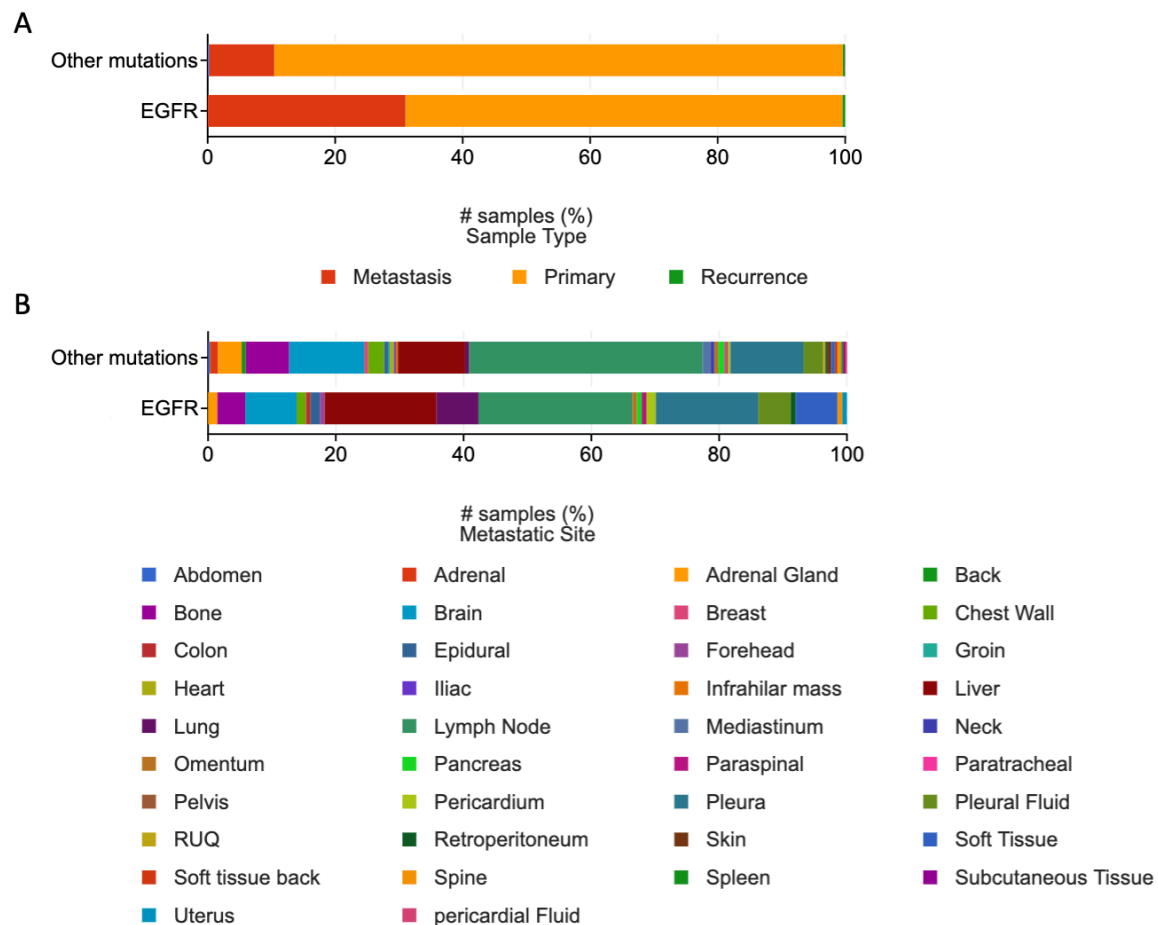
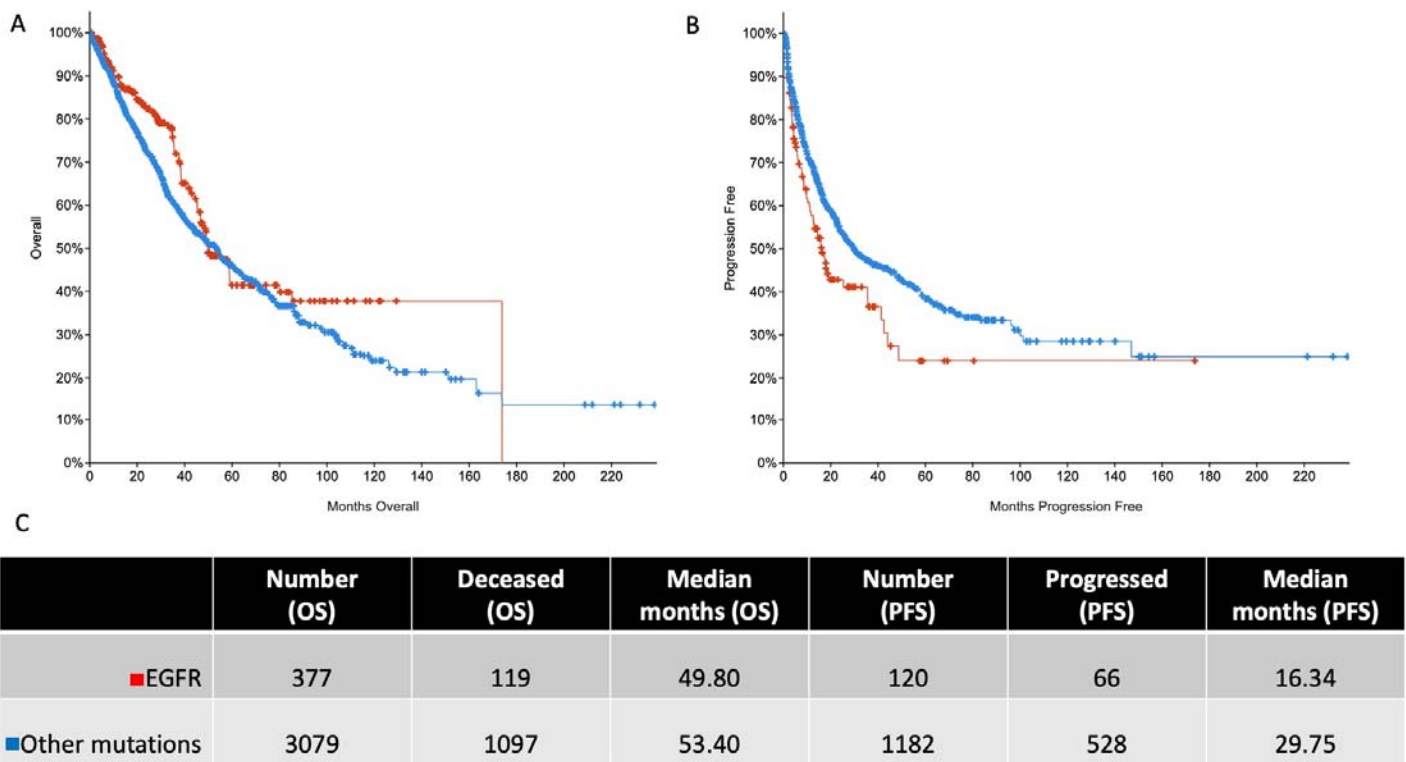


Figure 2: A) Frequency of metastatic sample collection B) Frequency of metastatic sample collection by site. Significant difference between the two groups (Chi-squared test p-value 0.00641)

It is made available under a [CC-BY 4.0 International license](https://creativecommons.org/licenses/by/4.0/).

**Overall survival (OS) is comparable in the two groups while progression free survival (PFS) is shorter in patients with *EGFR* mutations.**

OS and PFS was compared in the two groups and Kaplan-Meier curves were generated (figure 3A and B). The OS in both the groups were comparable with *EGFR* mutant cancer patients having a median survival of ~49 months and those with other mutations surviving ~53 months (figure 3C). The PFS in patients with *EGFR* mutations was significantly shorter than those with other mutations (~16 months versus ~30 months, figure 3C).

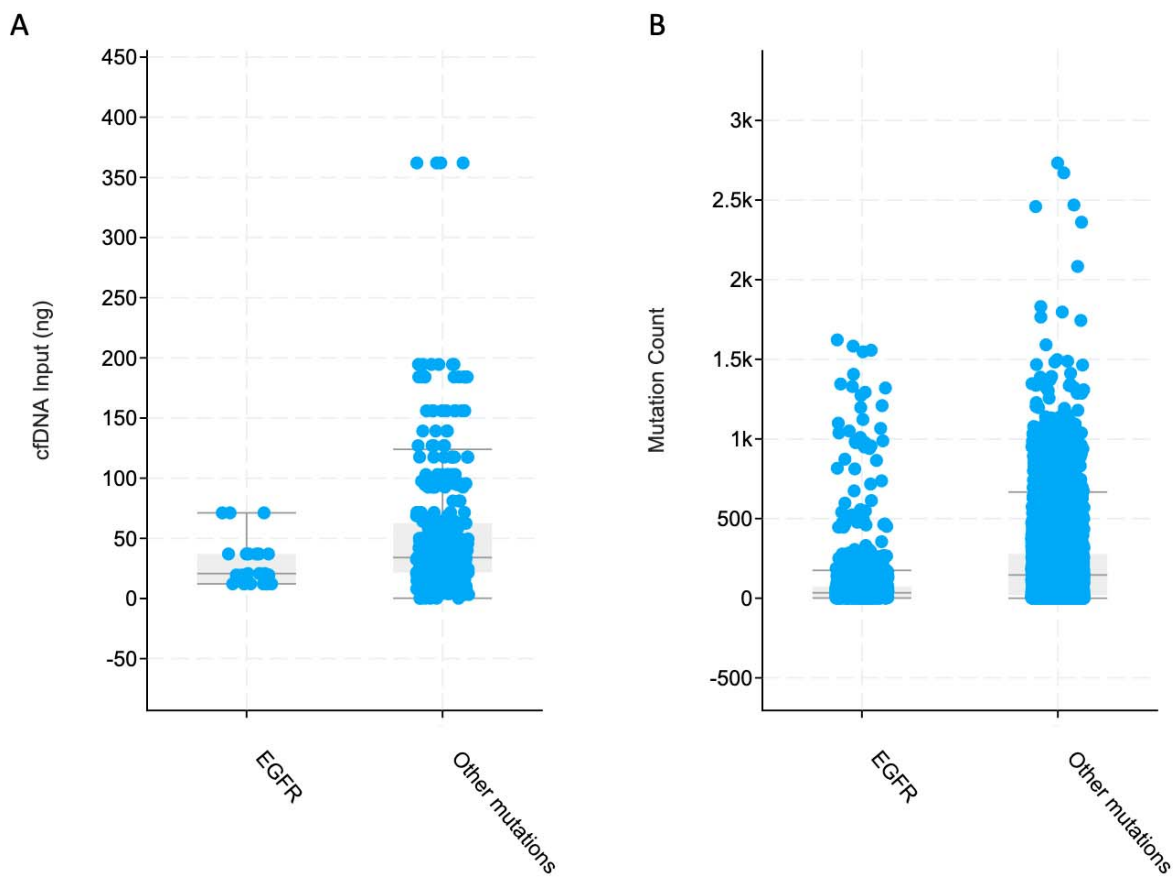


**Figure 3: A) Overall survival (OS) Kaplan-Meier curve. Logrank test p-value 0.0240 B) Progression free survival (PFS) Kaplan-Meier curve. Logrank test p-value 0.0042 C) Table depicting number of patients where data was available, number that either died or progressed and median survival in months.**



## Patients with other mutations have a higher tumor mutation burden and have higher levels of cell-free DNA.

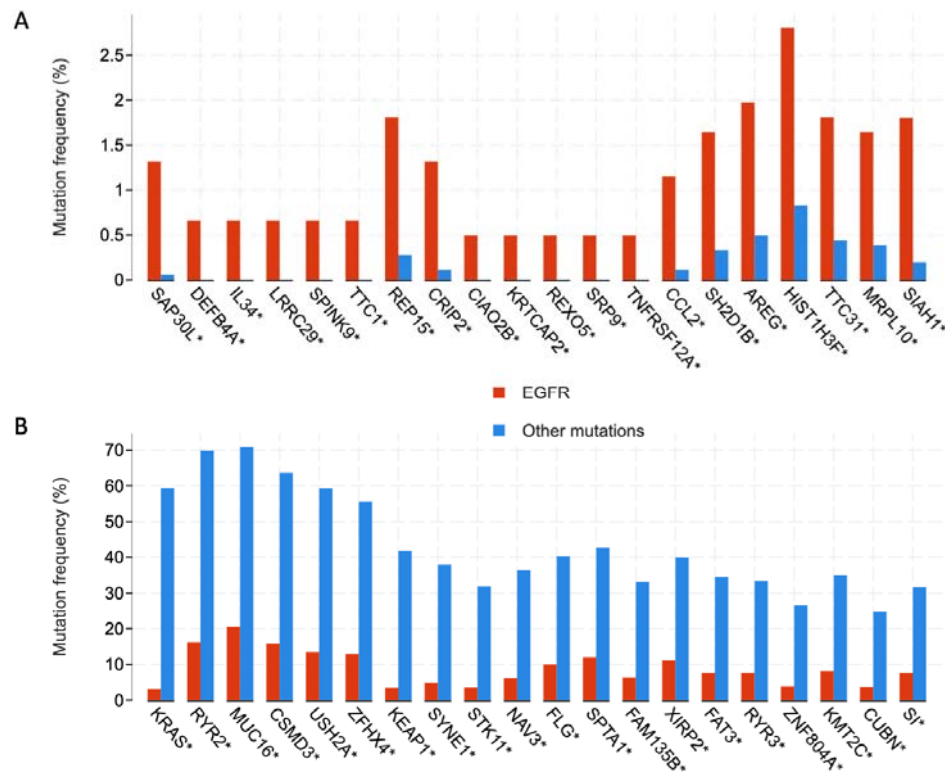
The quantity of cell-free DNA isolated from patients with mutations other than *EGFR* was higher than those with *EGFR* mutations (figure 4A). Similarly, the tumor mutation burden was higher in patients with other mutations (figure 4B).



**Figure 4: A) Differences in quantity of cell-free DNA obtained from patients in the two groups.** Non-significant difference with median quantities being 20.7 ng and 34 ng in *EGFR* and other mutations group respectively (Chi-squared p-value 0.199) **B) Differences in tumor mutation count.** Median mutation count of 35 in *EGFR* groups versus 151 in other mutations group (Significant difference with Kruskal Wallis test p-value  $<10^{-10}$ )

### Co-occurrence of mutations and copy number alterations differ in the two groups.

Commonly co-occurring mutations in the two groups were analyzed. TP53 mutations were amongst the commonest mutations in both groups and were excluded in this analysis. Similarly, as anticipated *EGFR* mutations were most frequent in the *EGFR* mutant group but have been excluded in the analysis. The most frequently co-occurring mutations in the *EGFR* mutant group (with low frequency in the other group) were in *SAP30L*, *DEFB4A*, *IL34*, *LRRC29*, *SPINK9*, *TTC1*, *REP15*, *CRIP2*, *CIAO2B*, *KRTCAP2*, *REXO5*, *SRP9*, *TNFRSF12A*, *CCL2*, *SH2D1B*, *AREG*, *HIST1H3F*, *TTC31*, *MRPL10* and *SIAH1*. Commonest mutations in patients with mutations other than *EGFR* were *KRAS*, *RYR2*, *MUC16*, *CSMD3*, *USH2A*, *ZFH4*, *KEAP1*, *SYNE1*, *STK11*, *NAV3*, *FLG*, *SPTA1*, *FAM135B*, *XIRP2*, *FAT3*, *RYR3*, *ZNF804A*, *KMT2C*, *CUBN* and *SI*. Frequency of occurrence of these mutations are depicted in figure 5A and B.



**Figure 5: A) and B) Frequency of commonest co-occurring mutations.** \*asterisked genes represent significant differences.

It is made available under a [CC-BY 4.0 International license](https://creativecommons.org/licenses/by/4.0/).

The commonest copy number alterations were similarly analyzed. As was done with the mutations, *EGFR* amplifications have not been discussed as these are commonly seen in patients with *EGFR* mutations. The commonest amplifications in the *EGFR* group were on *LOC650226*, *HPVC1*, *LOC100130849*, *DKFZP434L 192*, *CCT6A*, *SNORA15*, *SUMF2*, *VSTM2A-OT1*, *VOPPI* and *PHKG1* (figure 6A).

The commonest alterations in the other group were amplifications of *DCUN1D1*, *ATP11B*, *MCCC1*, *SOX2*, *B3GNT5*, *MCF2L2*, *LAMP3*, *KLHL24* and *YEATS2* (figure 6B).

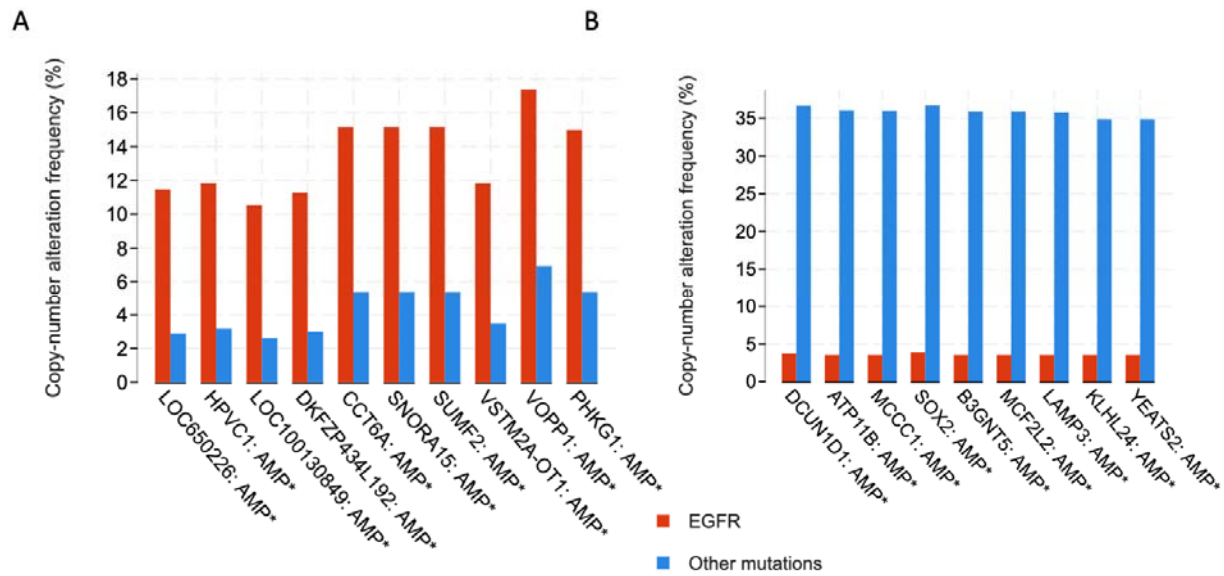


Figure 6: A) and B) Frequency of various copy number alterations in the two groups.

AMP = amplification \*asterisked genes represent significant differences.

## Discussion

This retrospective study comparing *EGFR* mutant and *EGFR* wildtype NSCLC confirm the commonest clinical characteristics described in other studies. Patients with *EGFR* mutations were more likely to be female, never-smokers and of Asian ethnicity. Lung adenocarcinoma was the commonest histological subtype in these patients. These findings being similar to other studies (5)(10)(29)(30)(31) pointed towards these metadata being representative of differences seen in multiple individual studies. Further, I showed that there were differences in the staging of cancer between the two groups with *EGFR* mutant cancer being more likely to be diagnosed at a more advanced stage. Metastatic samples collected from the two groups suggest that *EGFR* mutant cancer are more likely to metastasize to the pleura and pleural fluid as well as to the liver. On the other hand, NSCLC tumors harboring other mutations were more likely to metastasize to lymph nodes, to the brain and to the adrenal glands. Likely due to these differences in staging and higher likelihood of metastasis in the *EGFR* mutant group, the progression free survival was shorter in patients with *EGFR* mutations. Yet, the difference in median overall survival was only 1 month. These findings are striking in light of targeted therapies for *EGFR* mutant cancers with EGFR TKIs and are strongly suggestive of rapid development of resistance to these therapies (32)(33).

At the genomic level, the tumor mutation burden was higher in *EGFR* wildtype patients. This finding is anticipated as these cancers may lack specific driver mutations and instead rely on multiple mutations for their transformation from normal tissue to cancer. The quantity of cell free DNA though, not significantly different in the two groups, was lower in patients with *EGFR* mutations. The mutation and copy number alteration landscape were also different in the two groups and the commonest genes that were mutated or amplified are listed in the results section.

It is made available under a [CC-BY 4.0 International license](#) .

This study is limited by its retrospective design and therefore is likely to have a degree of convenience sampling. The effects of this error were likely minimal as the clinical characteristics of the two groups were similar to that seen in other prospective studies. Additionally, there were limitations in the quality of data. For example, 6 of 17 included studies did not provide copy-number variation data for each. It is also possible that endpoints such as progression free survival were calculated differently in the various studies included in these analyses. Despite filtering to NSCLC studies, a small number of lung cancers other than NSCLC (<0.5%) also crept through the filters. This number was very small and likely did not alter the results significantly. cBioPortal data does not include specific treatment data and it is possible that a bias towards the null may have occurred in the overall survival data. Other studies have shown better outcomes in patients with *EGFR* mutations when treated with EGFR TKIs (11)(12)(6)(13). For the convenience of this study, NSCLC was broadly divided in to two groups, one for patients with *EGFR* mutations and the other for patients with wildtype *EGFR*. The second group is an oversimplification and includes a gamut of different mutations including some driver mutations such as *KRAS*. Finally, despite showing clear differences in the mutation and copy number alteration landscape in the two groups, this study does not clearly define differences in the molecular mechanisms.

## Conclusions

Such studies on the clinicogenomic features of NSCLC and other cancers are likely to throw light on possible new “druggable” targets. Additionally, hypotheses may be drawn from these studies and taken back to the “bench” to understand specific molecular mechanisms such as resistance to EGFR TKIs (34) or the role of cell-free DNA (35). Future prospective studies and clinical trials are likely to include genomic level and transcriptomic analyses to draw broader clinicogenomic conclusions and lead to significant advances in the management of NSCLC.

## References

1. Cancer Facts & Figures 2020 | American Cancer Society [Internet]. [cited 2020 Aug 7]. Available from: <https://www.cancer.org/research/cancer-facts-statistics/all-cancer-facts-figures/cancer-facts-figures-2020.html>
2. Zhang X, Zhao Y, Wang M, Yap WS, Chang AY. Detection and comparison of epidermal growth factor receptor mutations in cells and fluid of malignant pleural effusion in non-small cell lung cancer. *Lung Cancer Amst Neth*. 2008 May;60(2):175–82.
3. Cheng L, Alexander RE, Maclennan GT, Cummings OW, Montironi R, Lopez-Beltran A, et al. Molecular pathology of lung cancer: key to personalized medicine. *Mod Pathol Off J U S Can Acad Pathol Inc*. 2012 Mar;25(3):347–69.
4. Ding L, Getz G, Wheeler DA, Mardis ER, McLellan MD, Cibulskis K, et al. Somatic mutations affect key pathways in lung adenocarcinoma. *Nature*. 2008 Oct 23;455(7216):1069–75.
5. Pao W, Miller V, Zakowski M, Doherty J, Politi K, Sarkaria I, et al. EGF receptor gene mutations are common in lung cancers from “never smokers” and are associated with sensitivity of tumors to gefitinib and erlotinib. *Proc Natl Acad Sci U S A*. 2004 Sep 7;101(36):13306–11.
6. Sharma SV, Bell DW, Settleman J, Haber DA. Epidermal growth factor receptor mutations in lung cancer. *Nat Rev Cancer*. 2007 Mar;7(3):169–81.
7. Cosmic. COSMIC - Catalogue of Somatic Mutations in Cancer [Internet]. [cited 2020 Mar 6]. Available from: <https://cancer.sanger.ac.uk/cosmic>
8. D’Souza G, Dhar C, Kyalanoor V, Yadav L, Sharma M, S MN, et al. High frequency of exon 20 S768I EGFR mutation detected in malignant pleural effusions: A poor prognosticator of NSCLC. *CANCER Rep. n/a(n/a):e1262*.
9. EGFR Mutations in Lung Cancer: Correlation with Clinical Response to Gefitinib Therapy | Science [Internet]. [cited 2020 Aug 7]. Available from: [https://science.sciencemag.org/content/304/5676/1497.abstract?casa\\_token=UGgVq\\_BviQ4AAAAA:UE-7XxHrVZesuZZG2YCiLgKvYF2CePvIYq3bbFwdn83ztvFUjUljZHDi8pBW-08Cx2Ua\\_NlG2jq](https://science.sciencemag.org/content/304/5676/1497.abstract?casa_token=UGgVq_BviQ4AAAAA:UE-7XxHrVZesuZZG2YCiLgKvYF2CePvIYq3bbFwdn83ztvFUjUljZHDi8pBW-08Cx2Ua_NlG2jq)
10. Activating Mutations in the Epidermal Growth Factor Receptor Underlying Responsiveness of Non–Small-Cell Lung Cancer to Gefitinib | NEJM [Internet]. [cited 2020 Aug 7]. Available from: <https://www.nejm.org/doi/full/10.1056/NEJMoa040938>

It is made available under a [CC-BY 4.0 International license](https://creativecommons.org/licenses/by/4.0/).

11. Bell DW, Lynch TJ, Haserlat SM, Harris PL, Okimoto RA, Brannigan BW, et al. Epidermal Growth Factor Receptor Mutations and Gene Amplification in Non–Small-Cell Lung Cancer: Molecular Analysis of the IDEAL/INTACT Gefitinib Trials. *J Clin Oncol*. 2005 Nov 1;23(31):8081–92.
12. Eberhard DA, Johnson BE, Amler LC, Goddard AD, Heldens SL, Herbst RS, et al. Mutations in the Epidermal Growth Factor Receptor and in KRAS Are Predictive and Prognostic Indicators in Patients With Non–Small-Cell Lung Cancer Treated With Chemotherapy Alone and in Combination With Erlotinib. *J Clin Oncol*. 2005 Sep 1;23(25):5900–9.
13. Cheng L, Zhang S, Alexander R, Yao Y, MacLennan GT, Pan C, et al. The landscape of EGFR pathways and personalized management of non-small-cell lung cancer. *Future Oncol*. 2011 Apr 1;7(4):519–41.
14. Cerami E, Gao J, Dogrusoz U, Gross BE, Sumer SO, Aksoy BA, et al. The cBio cancer genomics portal: an open platform for exploring multidimensional cancer genomics data. *Cancer Discov*. 2012 May;2(5):401–4.
15. Gao J, Aksoy BA, Dogrusoz U, Dresdner G, Gross B, Sumer SO, et al. Integrative analysis of complex cancer genomics and clinical profiles using the cBioPortal. *Sci Signal*. 2013 Apr 2;6(269):pl1.
16. Thoracic PDX (MSK, provisional) [Internet]. Available from: [cBioPortal.org](https://cBioPortal.org)
17. Yaeger R, Chatila WK, Lipsyc MD, Hechtman JF, Cercek A, Sanchez-Vega F, et al. Clinical Sequencing Defines the Genomic Landscape of Metastatic Colorectal Cancer. *Cancer Cell*. 2018 08;33(1):125–136.e3.
18. Jamal-Hanjani M, Wilson GA, McGranahan N, Birkbak NJ, Watkins TBK, Veeriah S, et al. Tracking the Evolution of Non-Small-Cell Lung Cancer. *N Engl J Med*. 2017 01;376(22):2109–21.
19. Rizvi NA, Hellmann MD, Snyder A, Kvistborg P, Makarov V, Havel JJ, et al. Cancer immunology. Mutational landscape determines sensitivity to PD-1 blockade in non-small cell lung cancer. *Science*. 2015 Apr 3;348(6230):124–8.
20. Gobbini E, Galetta D, Tiseo M, Graziano P, Rossi A, Bria E, et al. Molecular profiling in Italian patients with advanced non-small-cell lung cancer: An observational prospective study. *Lung Cancer Amst Neth*. 2017;111:30–7.
21. Rizvi H, Sanchez-Vega F, La K, Chatila W, Jonsson P, Halpenny D, et al. Molecular Determinants of Response to Anti-Programmed Cell Death (PD)-1 and Anti-Programmed Death-Ligand 1 (PD-L1) Blockade in Patients With Non-Small-Cell Lung Cancer Profiled With Targeted Next-Generation Sequencing. *J Clin Oncol Off J Am Soc Clin Oncol*. 2018 01;36(7):633–41.
22. Campbell JD, Alexandrov A, Kim J, Wala J, Berger AH, Peadarallu CS, et al. Distinct patterns of somatic genome alterations in lung adenocarcinomas and squamous cell carcinomas. *Nat Genet*. 2016;48(6):607–16.
23. Imielinski M, Berger AH, Hammerman PS, Hernandez B, Pugh TJ, Hodis E, et al. Mapping the hallmarks of lung adenocarcinoma with massively parallel sequencing. *Cell*. 2012 Sep 14;150(6):1107–20.
24. Lung Adenocarcinoma, Lung Squamous Cell Carcinoma (TCGA, Firehose Legacy) [Internet]. Available from: [cBioPortal.org](https://cBioPortal.org)

It is made available under a [CC-BY 4.0 International license](https://creativecommons.org/licenses/by/4.0/) .

25. Cancer Genome Atlas Research Network. Comprehensive molecular profiling of lung adenocarcinoma. *Nature*. 2014 Jul 31;511(7511):543–50.
26. TCGA PanCancer Atlas [Internet]. TCGA PanCancer Atlas. Available from: <https://www.cell.com/pbassets/consortium/pancanceratlas/pancani3/index.html>
27. Jordan EJ, Kim HR, Arcila ME, Barron D, Chakravarty D, Gao J, et al. Prospective Comprehensive Molecular Characterization of Lung Adenocarcinomas for Efficient Patient Matching to Approved and Emerging Therapies. *Cancer Discov*. 2017;7(6):596–609.
28. Chen J, Yang H, Teo ASM, Amer LB, Sherbaf FG, Tan CQ, et al. Genomic landscape of lung adenocarcinoma in East Asians. *Nat Genet*. 2020 Feb;52(2):177–86.
29. Ciardiello F, Tortora G. EGFR Antagonists in Cancer Treatment. *N Engl J Med*. 2008 Mar 13;358(11):1160–74.
30. Update on Epidermal Growth Factor Receptor Mutations in Non–Small Cell Lung Cancer | Clinical Cancer Research [Internet]. [cited 2020 Aug 7]. Available from: <https://clincancerres.aacrjournals.org/content/12/24/7232>
31. Zhou C, Wu Y-L, Chen G, Feng J, Liu X-Q, Wang C, et al. Erlotinib versus chemotherapy as first-line treatment for patients with advanced EGFR mutation-positive non-small-cell lung cancer (OPTIMAL, CTONG-0802): a multicentre, open-label, randomised, phase 3 study. *Lancet Oncol*. 2011 Aug;12(8):735–42.
32. Novel D761Y and Common Secondary T790M Mutations in Epidermal Growth Factor Receptor–Mutant Lung Adenocarcinomas with Acquired Resistance to Kinase Inhibitors | Clinical Cancer Research [Internet]. [cited 2020 Aug 7]. Available from: <https://clincancerres.aacrjournals.org/content/12/21/6494>
33. Gazdar AF. Activating and resistance mutations of EGFR in non-small-cell lung cancer: role in clinical response to EGFR tyrosine kinase inhibitors. *Oncogene*. 2009 Aug;28(1):S24–31.
34. Lin J, Gu Y, Du R, Deng M, Lu Y, Ding Y. Detection of EGFR mutation in supernatant, cell pellets of pleural effusion and tumor tissues from non-small cell lung cancer patients by high resolution melting analysis and sequencing. *Int J Clin Exp Pathol*. 2014;7(12):8813–22.
35. Suraj S, Dhar C, Srivastava S. Circulating nucleic acids: An analysis of their occurrence in malignancies. *Biomed Rep*. 2017 Jan;6(1):8–14.