

1 **Neutralizing antibody response in non-hospitalized SARS-CoV-2 patients**

2

3 **Natalia Ruetalo¹, Ramona Businger¹, Karina Althaus², Simon Fink³, Felix Ruoff³**

4 **Klaus Hamprecht¹, Bertram Flehmig⁴, Tamam Bakchoul², Markus F. Templin³,**

5 **Michael Schindler^{1*}**

6

7 ¹ Institute for Medical Virology and Epidemiology of Viral Diseases, University Hospital

8 Tübingen, Tübingen, Germany

9 ² Institute for Transfusion Medicine, University Hospital Tübingen, Tübingen, Germany

10 ³ NMI, Reutlingen, Germany

11 ⁴ Mediagnost GmbH, Reutlingen, Germany

12

13

14

15

16

17

18

19 *Correspondence should be addressed to:

20 Michael Schindler, michael.schindler@med.uni-tuebingen.de

21

22

23

24

25 **Abstract**

26 The majority of infections with SARS-CoV-2 (SCoV2) are asymptomatic or mild without
27 the necessity of hospitalization. It is of outmost importance to reveal if these patients
28 develop an antibody response against SCoV2 and to define which antibodies confer
29 virus neutralization. We hence conducted a comprehensive serological survey of 49
30 patients with a mild course of disease and quantified neutralizing antibody responses
31 against authentic SCoV2 employing human cells as targets.

32 Four patients (8%), even though symptomatic, did not develop antibodies against SCoV2
33 and two other sera (4%) were only positive in one of the serological assays employed.
34 For the remainder, antibody response against the S-protein correlated with serum
35 neutralization whereas antibodies against the nucleocapsid were poor predictors of virus
36 neutralization. Only six sera (12%) could be classified as highly neutralizing.
37 Furthermore, sera from several individuals with fairly high antibody levels had only poor
38 neutralizing activity. In addition, our data suggest that antibodies against the seasonal
39 coronavirus 229E contribute to SCoV2 neutralization.

40 Altogether, we show that there is a wide breadth of antibody responses against SCoV2
41 in patients that differentially correlate with virus neutralization. This highlights the
42 difficulty to define reliable surrogate markers for immunity against SCoV2.

43

44

45

46

47

48

49 **Introduction**

50 The most recent emerging virus outbreak happened in China in December 2019 caused
51 by SARS (severe acute respiratory syndrome) coronavirus-2 (SCoV2) (1), leading to a
52 pandemic, as defined by the WHO in March 2020 (2, 3). Infections with SCoV2 can
53 cause the so-called disease COVID-19 (Coronavirus disease 2019). 50% of all COVID-
54 19 cases range from asymptomatic to mild. 30% show moderate to pronounced
55 symptoms. 5-20% of patients are hospitalized due to critical course of infection with
56 severe lung complications and on average ~5% die, even though there is high variation
57 dependent on the country (4). Recent data from a multicentric cohort of 10021
58 hospitalized COVID-19 patients, showed an in-hospital mortality of 73% in mechanically
59 ventilated patients requiring dialysis, and of 53% of invasively ventilated patients (5).
60 One critical determinant of illness is age, as mortality is highest in the elderly population
61 (1, 2, 4, 5). SCoV2 is currently spreading in an immune naive population and a vaccine is
62 not yet available, even though there are numerous candidates in the advanced
63 development pipeline (6). For an updated online resource refer to
64 <https://biorender.com/covid-vaccine-tracker>.

65 The pandemic is not only devastating in terms of the direct harm to human health
66 inflicted by the virus infection, but the continuous quarantine and lock-down
67 measurements have enormous negative impact on the socio-economical life of billions of
68 individuals (7). With the potential of achieving herd immunity as the virus spreads within
69 the population, numerous studies analyzing the prevalence of SCoV2-specific antibodies
70 in the population have been initiated (8-11).

71 Regardless of the prevalence of antibodies against SCoV2, one critical and still poorly
72 defined determinant is the ability of antibodies to neutralize SCoV2 and hence potentially

73 confer protective immunity against the infection. Besides, antibodies that bind to SCoV2
74 but do not result in neutralization might enhance infection, a phenomenon called
75 antibody-dependent enhancement (12), which has not been investigated either. Finally,
76 the role of cross-protecting antibodies from seasonal coronaviruses is also discussed,
77 but not yet experimentally assessed (12).

78 To shed light on the determinants of human serum to neutralize SCoV2 we performed a
79 comprehensive serological analysis of 49 individuals that were non-hospitalized and
80 range from an asymptomatic to a mild course of disease. We employed several assays
81 measuring SCoV2-specific IgGs against the S-protein, the S-protein RBD, and the
82 nucleocapsid. Furthermore, we assessed S-RBD specific IgM and IgA and used a novel
83 innovative throughput Western-blot system to detect IgGs against SCoV2 and seasonal
84 coronaviruses. Finally, all serological parameters were associated with the ability of the
85 49 sera to neutralize the infection on human cells with a clinical SCoV2 isolate.

86

87

88

89

90

91

92

93

94

95

96

97 **Results**

98 **The majority of patients develop SCoV2-specific antibodies**

99 For our serological survey, we recruited individuals coming to the Department of
100 Transfusion Medicine to donate blood for plasma therapy. All 49 patients included in this
101 study were non-hospitalized with asymptomatic to mild courses of disease, including
102 cough (69%), fever (59%), limb pain and headache (35%), diarrhea (10%), and loss of
103 taste (10%) (Supplementary Table 1). The age ranged from 19-66 years (median 40
104 years), gender was balanced (24 male, 25 female). The time from positive SARS-CoV-2
105 test to blood sampling was 14-64 days (median 45 days).

106 We employed several serological assays to detect antibodies against SCoV2 (Table 1
107 and Supplementary Table 1). IgG ELISAs against the S-protein (Euroimmune) and S-
108 protein RBD (Mediagnost), IgA and IgM against S-RBD (Mediagnost) as well as an
109 ECLIA detecting IgG against the viral nucleocapsid (NC, Roche). Furthermore, we
110 applied a throughput Western blot system (DigiWest) allowing detection of SCoV2 and
111 seasonal coronavirus antibodies (13).

112 4/49 (8%) sera were negative in all serological assays employed to detect SCoV2-
113 specific antibodies, even though they were symptomatic showing two or more symptoms.

114 In addition, two more sera were only positive in one of the four assay systems to detect
115 IgGs against S or NC. Apart from the robust IgG-response both against the S-protein
116 (90%) and NC (80%), development of S-specific IgM and IgA was less prominent, with
117 35 and 30% of positive sera respectively (Supplementary Table 1).

118 In sum, even though 12% (6/49) of patients did not develop antibodies against SCoV2,
119 the vast majority (88%, 43/49) of individuals mount a robust SCoV2-specific antibody
120 response.

121 **Few patients develop high virus neutralizing titers (VNTs) after SCoV2 infection**

122 The majority of SARS-CoV-2 infected individuals seroconvert within 14 days (Guo et al.,
123 2020); however, it is unclear if sera from these patients neutralize SCoV2. To test for
124 virus neutralization we established two procedures using human Caco-2 cells as targets
125 (Fig. 1a). First, we infected cells with a SCoV2 strain isolated from a throat swab of a
126 patient showing a high viral load as determined by qRT-PCR. This strain was designated
127 SCoV2 200325_Tü1. Cells were co-incubated with patient sera and virus in serial two-
128 fold dilutions from 1:20 up to 1:2560. 48 hpi cells were fixed with 80% acetone and
129 immunofluorescence stained against SCov2 antigens with a highly potent patient serum
130 we retrieved from a hospitalized convalescent donor. Cells were counter-stained with
131 DAPI and infection rates quantified via automated fluorescence-microscopy. For the
132 second approach, we employed the mNeonGreen expressing infectious SCoV2 clone
133 [12]. Cells were treated and infected exactly as explained for the SCoV2 Tü1 strain, but
134 using slightly adjusted dilutions of sera; 1:40 to 1:5120. 48 hpi cells were fixed with 2%
135 PFA containing Hoechst33342 as nuclear stain (Fig. 1b, representative sera examples of
136 both procedures). Infection rates of the corresponding serum dilutions were used to plot
137 sigmoidal inhibition curves and calculate the virus-neutralizing titer 50 (VNT_{50}) which is
138 the serum dilution inhibiting the half-maximal infection (Fig. 1c). The VNT_{50} values of the
139 sera obtained with the primary patient isolate correlated highly significantly with the titers
140 calculated when using the mNeonGreen-expressing infectious clone ($r=0.7349$; Fig.1d).
141 We only obtained slight discrepancies for highly potent sera that seemed to neutralize
142 SCoV2-mNG more efficiently than SCoV2-Tü1 at high dilutions. In both assays, sera
143 from four healthy donors and two consecutive sera from a hospitalized convalescent
144 patient were either completely negative for VNT as well as all serological assays, or

145 showed robust neutralization and SCoV2-specific antibodies (Table 1).
146 Patient sera were classified according to their neutralizing capacity (Fig. 1e) revealing
147 that only 12% (6/49) were highly potent neutralizers. 8% (4/49) of sera did not neutralize
148 SCoV2 at all *in vitro* and 24% (12/49) were poor neutralizers even though showing
149 robust signals in the different serological assays employed. Hence, there is a large
150 diversity in the ability of patient sera to neutralize SCoV2 which is not always associated
151 with the amount of SCoV2-specific antibodies.

152
153 **VNT₅₀ is not associated with specific patient characteristics, apart from gender**

154 We next assessed potential associations of patient characteristics with serum
155 neutralization. Neither the sampling date 14-64 days (Fig. 2a) nor patient age (Fig. 2b)
156 correlated with serum neutralization. This indicates that seroconversion, as reported, is
157 achieved within 14 days in all patients and VNTs might not drop up to 64 days. On
158 average, titers were higher in males as compared to females (Fig. 2c). In detail, 3/4
159 individuals that did not neutralize at all were female but 5/6 highly potent neutralizers
160 were male (Supplementary Table 1). Furthermore, the average VNT₅₀ of men is double
161 as compared to women (613 vs 322; compare Fig. 2c). Of note, there was no association
162 of VNT₅₀ with the severity of disease (Fig. 2d), respectively amount of symptoms.

163
164 **SCoV2-specific IgG against the S-protein RBD indicate serum neutralization**

165 Next, we set out to define serological correlates of virus neutralization *in vitro*. Overall,
166 the neutralizing capacity of the sera correlated with the abundance of SCoV2 specific
167 IgG against the S-protein ($r=0.6137$; Fig. 3a), with a slightly better r-value when the IgG-
168 measured were RBD-specific ($r=0.7198$; Fig. 3b). This indicates, as expected, that

169 antibodies against the RBD are critically involved in SCoV2-neutralization. Similarly,
170 RBD-specific IgA and IgM seem to contribute to neutralization (Fig. 3c and Fig. 3d), even
171 though their abundance is highly diverse in the patient cohort (Supplementary Table 1).
172 In contrast, IgGs against the SCoV2-nucleocapsid measured by the Roche ECLIA were
173 only poor predictors of serum neutralization ($r=0.3249$; Fig. 3d).

174 In conclusion, ELISAs or antibody tests, quantifying antibodies against the S-protein and
175 in particular the S-RBD seem to correlate best with patient serum neutralization.

176

177 **Antibodies against seasonal coronavirus 229E contribute to serum neutralization** 178 **of SCoV2**

179 It is a matter of ongoing debate if antibodies against seasonal coronaviruses might
180 confer cross-protection against SARS-CoV-2. To get first insights into this question, we
181 took use of a quantitative throughput Western blot-based detection system identifying the
182 bulk of IgGs against a specific coronavirus (13). As expected and in line with our
183 previous data (Fig. 3a and 3b), IgG against SCoV2 correlated with VNT_{50} ($r=0.6592$; Fig.
184 4a). Of note, IgG against the seasonal coronavirus 229E was also associated with VNT_{50}
185 ($r=0.4136$, $p=0.0017$; Fig. 4b), indicating that this class of antibodies might support
186 SCoV2 neutralization. Remarkably, this effect was specific for 229E and neither
187 observed for seasonal coronaviruses OC43 (Fig. 4c) nor NL63 (Fig. 4d). In conclusion,
188 even though effects might be minor as compared to the antibodies mounted against
189 SCoV2-S-RBD, a humoral immune response against the seasonal coronavirus 229E
190 might support SCoV2 neutralization.

191

192

193 Discussion

194 Recent studies assessed the development of virus-specific antibodies in various cohorts
195 of COVID-19 convalescent individuals (14-16). Overall, the data of the latter is in
196 accordance with ours, showing that the vast majority of individuals develop SCoV2-
197 specific antibodies. Furthermore, SCoV2-specific IgGs were more prevalent than IgMs
198 (15, 16), a finding that we confirm and extend to the abundance of SCoV2-specific IgA.
199 Using pseudovirus-based neutralization assays Robbiani et al. (15) also report that there
200 is a correlation between VNT_{50} and antibodies against the S-RBD. Furthermore, males
201 had significantly higher neutralizing activity than females, a finding which is also
202 supported by our data (Fig. 2c). We critically extend the aforementioned studies by
203 several highly relevant aspects. First, for all our neutralization experiments we employed
204 an authentic fully infectious clinical SCoV2-isolate on a human cell line, an approach that
205 was not used before to determine correlates of SCoV2 serum neutralization. Second, we
206 performed a comprehensive comparison of several serological tests to delineate
207 correlates of SCoV2 neutralization. This revealed that NC-specific antibodies are poor
208 predictors of serum virus neutralization. In contrast, as supported by the findings of
209 Robbiani et al. (17) and Ju et al (18) RBD-specific IgGs seem to correlate best with
210 serum neutralization (Fig. 3b). In this context, it is remarkable that S-RBD specific IgA
211 and IgM also showed a high degree of correlation with the VNT_{50} (Fig. 3c and 3d),
212 indicating that these antibodies, even though their abundance was highly diverse in our
213 patient cohort, contributes to serum neutralization.

214 A phenomenon that is critically discussed is the potential enhancement of infection by
215 non-neutralizing antibodies (ADE) (12). For our VNT-assays, we are using human cells
216 expressing a diverse set of F_c -receptors, and directly assess the rate of infected cells by

217 immunofluorescence or reporter-gene expression. Hence, we should be able to detect
218 enhancement of infection by serum that is not or only poorly neutralizing and in higher
219 dilution ranges. However, in none of our 49 sera we observed ADE at any of the dilutions
220 tested, indicating that at least antibodies generated in the natural context of SCoV2
221 infection do not contribute to severity of infection. This is in line with the absence of a
222 correlation between the number of symptoms and VNT_{50} in our patients (Fig. 2d). On the
223 other hand, our cohort is biased due to the fact that none of the patients was
224 hospitalized. Therefore, it will be important to analyze if ADE plays a potential role in
225 severe cases of COVID-19.

226 Up to now, it was elusive if antibodies against seasonal coronaviruses that are highly
227 prevalent within the human population play a role in SCoV2 neutralization. We employed
228 an innovative throughput Western blot system to concomitantly detect antibodies specific
229 against SCoV2 as well as the seasonal coronaviruses 229E, OC43 and NL63 (13). In
230 fact, 100% of individuals included in our study had antibodies against the three seasonal
231 coronaviruses with high diversity in relative numbers (Supplementary Table 1).
232 Correlating the latter with our VNT_{50} values revealed a significant association of 229E-
233 specific IgGs with the ability of patient sera to neutralize SCoV2 infection (Fig. 4b).
234 Remarkably, this effect was 229E-specific since none of the other seasonal
235 coronaviruses showed such an association (Fig. 4c and 4d). While it is clear that 229E-
236 specific IgGs are not sufficient to confer cross-protection against SCoV2, our data imply
237 that the prevalence of such antibodies assists in the neutralization of SCoV2. A
238 hypothesis that is in line with the observation that antibodies directed against the RBD of
239 SARS or MERS alone are not sufficient to inactivate SCoV2 (18). It will be highly
240 interesting to analyze if the epidemiology of seasonal coronaviruses is a determinant of

241 COVID-19 severity, with the implication that in areas with a high prevalence of antibodies
242 against 229E mortality is decreased.

243 Altogether, we here establish several correlates of SCoV2 neutralization by patient
244 serum using a relevant virus-neutralization test. Even though S-RBD-specific IgGs
245 correlate best with serum neutralization, it is clear that multiple factors contribute to a
246 potent neutralizing antibody response. This might include subclasses of S-specific
247 antibodies as for instance IgM and IgA as well as the antibody response elicited against
248 the seasonal coronavirus 229E. This makes it particularly difficult to define singular
249 serological correlates of immune protection as discussed in the context of COVID-19
250 “immunity passports”. Furthermore, such an approach neglects other potentially essential
251 factors of immune protection as for instance, T-cell mediated immunity (19, 20) and the
252 innate immune response (21).

253

254 **Author contributions**

255 NR, RB, and MS established the neutralization test and performed all experiments with
256 SCoV2; KA and TB provided patient samples and did the Euroimmune ELISA; BF
257 performed all ELISAs provided by Mediagnost; KH established, analyzed and supervised
258 the Roche ECLIA; SF, FR and MT established, conducted and analyzed the DigiWest
259 detection system for SCoV2 and seasonal CoVs; NR, RB, and MS analyzed the data;
260 NR and MS drafted the figures and wrote the manuscript. MS developed the manuscript
261 to its final form; MS planned and supervised the study; all authors read, edited, and
262 approved the final manuscript.

263

264

265 **Conflict of interest**

266 The authors report no conflict of interest

267

268 **Acknowledgements**

269 We thank all patients and healthy volunteer donors for their cooperation in this study and

270 for their swab specimen collection and blood donation. We thank Thomas Iftner and Tina

271 Ganzenmüller for their support with diagnostic tests and the collection of swab

272 specimens.

273

274 **Funding**

275 This work was supported by grants to MS from the Baden-Württemberg foundation (BW-

276 Stiftung), the Deutsche Forschungsgemeinschaft as well as by basic funding provided to

277 MS by the University Hospital Tübingen and TÜFF-Gleichstellungsförderung to K.A.

278 (2563-0-0).

279

280

281

282

283

284

285

286

287

288

289 References

- 290 1. Zhu N, Zhang D, Wang W, Li X, Yang B, Song J, et al. A Novel Coronavirus from
291 Patients with Pneumonia in China, 2019. *N Engl J Med*. 2020;382(8):727-33.
- 292 2. Wolfel R, Corman VM, Guggemos W, Seilmaier M, Zange S, Muller MA, et al.
293 Virological assessment of hospitalized patients with COVID-2019. *Nature*.
294 2020;581(7809):465-9.
- 295 3. Wang C, Horby PW, Hayden FG, Gao GF. A novel coronavirus outbreak of global
296 health concern. *Lancet*. 2020;395(10223):470-3.
- 297 4. Lai CC, Wang CY, Wang YH, Hsueh SC, Ko WC, Hsueh PR. Global
298 epidemiology of coronavirus disease 2019 (COVID-19): disease incidence, daily
299 cumulative index, mortality, and their association with country healthcare resources and
300 economic status. *Int J Antimicrob Agents*. 2020;55(4):105946.
- 301 5. Karagiannidis C, Mostert C, Hentschker C, Voshaar T, Malzahn J, Schillinger G,
302 et al. Case characteristics, resource use, and outcomes of 10 021 patients with COVID-
303 19 admitted to 920 German hospitals: an observational study. *Lancet Respir Med*. 2020.
- 304 6. Liu X, Liu C, Liu G, Luo W, Xia N. COVID-19: Progress in diagnostics, therapy
305 and vaccination. *Theranostics*. 2020;10(17):7821-35.
- 306 7. Nicola M, Alsafi Z, Sohrabi C, Kerwan A, Al-Jabir A, Iosifidis C, et al. The socio-
307 economic implications of the coronavirus pandemic (COVID-19): A review. *Int J Surg*.
308 2020;78:185-93.
- 309 8. Pollan M, Perez-Gomez B, Pastor-Barriuso R, Oteo J, Hernan MA, Perez-Olmeda
310 M, et al. Prevalence of SARS-CoV-2 in Spain (ENE-COVID): a nationwide, population-
311 based seroepidemiological study. *Lancet*. 2020.
- 312 9. Vodigar PM, Valencak AO, Zupan B, Zupanc TA, Kurdija S, Korva M, et al. Low
313 prevalence of active COVID-19 in Slovenia: a nationwide population study on a
314 probability-based sample. *Clin Microbiol Infect*. 2020.
- 315 10. Gallian P, Pastorino B, Morel P, Chiaroni J, Ninove L, de Lamballerie X. Lower
316 prevalence of antibodies neutralizing SARS-CoV-2 in group O French blood donors.
317 *Antiviral Res*. 2020:104880.
- 318 11. Oude Munnink BB, Nieuwenhuijse DF, Stein M, O'Toole A, Haverkate M, Mollers
319 M, et al. Rapid SARS-CoV-2 whole-genome sequencing and analysis for informed public
320 health decision-making in the Netherlands. *Nat Med*. 2020.
- 321 12. Arvin AM, Fink K, Schmid MA, Cathcart A, Spreafico R, Havenar-Daughton C, et
322 al. A perspective on potential antibody-dependent enhancement of SARS-CoV-2.
323 *Nature*. 2020.
- 324 13. Simon F, Ruoff F, Stahl A, Becker M, Kaiser P, Traenkle B, et al. A throughput
325 serological Western blot system using whole virus lysate for the concomitant detection of
326 antibodies against SARS-CoV-2 and human endemic Coronaviridae. *medRxiv*. 2020.
- 327 14. Ni L, Ye F, Cheng ML, Feng Y, Deng YQ, Zhao H, et al. Detection of SARS-CoV-
328 2-Specific Humoral and Cellular Immunity in COVID-19 Convalescent Individuals.
329 *Immunity*. 2020;52(6):971-7 e3.
- 330 15. Robbiani DF, Gaebler C, Muecksch F, Lorenzi JCC, Wang Z, Cho A, et al.
331 Convergent antibody responses to SARS-CoV-2 in convalescent individuals. *Nature*.
332 2020.
- 333 16. Long QX, Tang XJ, Shi QL, Li Q, Deng HJ, Yuan J, et al. Clinical and
334 immunological assessment of asymptomatic SARS-CoV-2 infections. *Nat Med*. 2020.

- 335 17. Xie X, Muruato A, Lokugamage KG, Narayanan K, Zhang X, Zou J, et al. An
336 Infectious cDNA Clone of SARS-CoV-2. *Cell Host Microbe*. 2020;27(5):841-8 e3.
337 18. Ju B, Zhang Q, Ge J, Wang R, Sun J, Ge X, et al. Human neutralizing antibodies
338 elicited by SARS-CoV-2 infection. *Nature*. 2020.
339 19. Le Bert N, Tan AT, Kunasegaran K, Tham CYL, Hafezi M, Chia A, et al. SARS-
340 CoV-2-specific T cell immunity in cases of COVID-19 and SARS, and uninfected
341 controls. *Nature*. 2020.
342 20. Braun J, Loyal L, Frensch M, Wendisch D, Georg P, Kurth F, et al. SARS-CoV-2-
343 reactive T cells in healthy donors and patients with COVID-19. *Nature*. 2020.
344 21. McKechnie JL, Blish CA. The Innate Immune System: Fighting on the Front Lines
345 or Fanning the Flames of COVID-19? *Cell Host Microbe*. 2020;27(6):863-9.
346

347

348

349

350

351

352

353

354

355

356

357

358

359

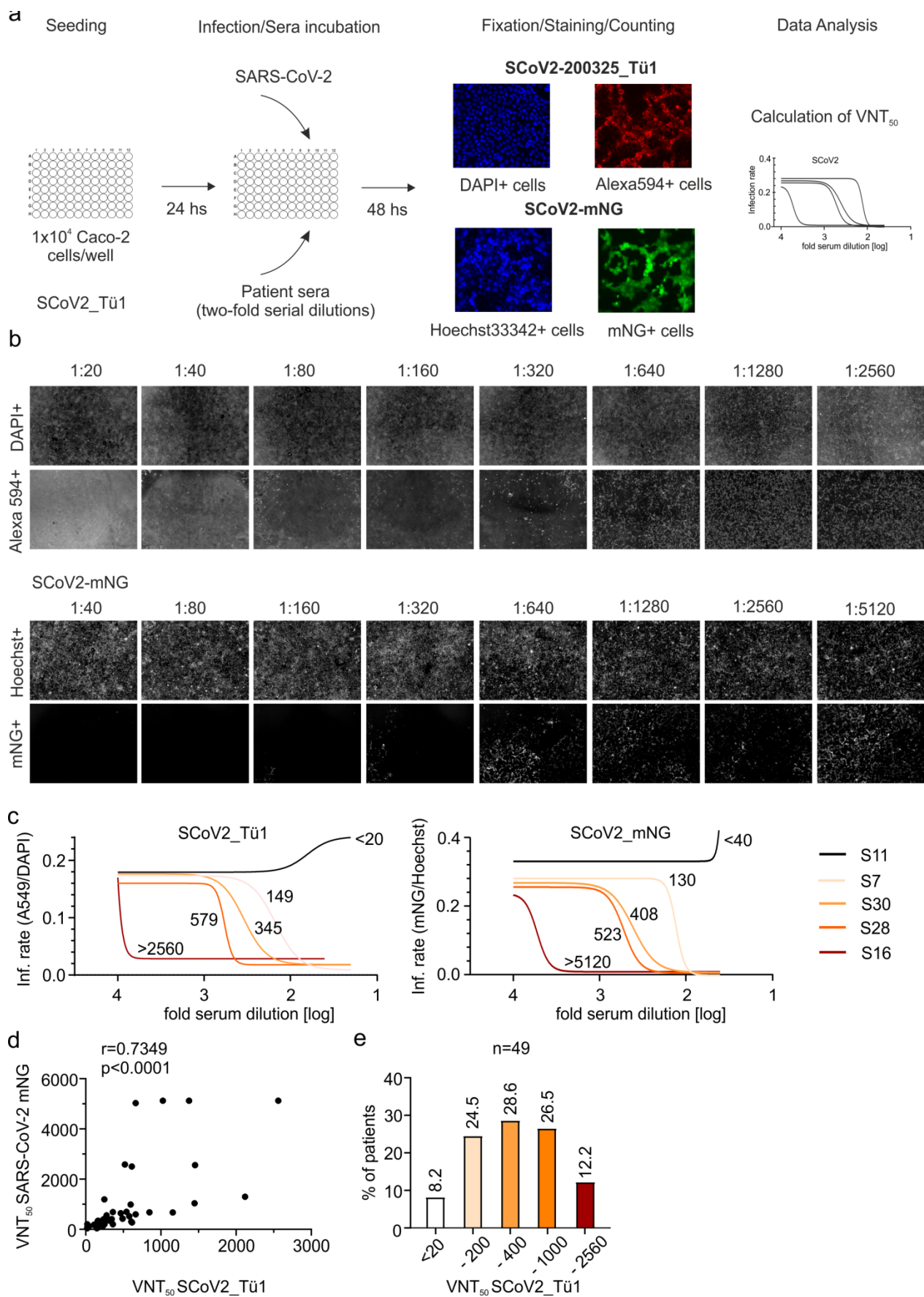
360

361

362

363

364 **Figures and Table**



366 **Figure 1. Neutralization of SCoV2 by sera of COVID-19 convalescent patients.** (a)

367 Experimental layout of the two neutralization assays employed using the clinical isolate

368 (SCoV2_Tü1) and the green-fluorescent virus (SCoV2_mNG). (b) Primary data showing

369 results of both neutralization assays using one patient serum as an example (S28). In

370 the upper row, the total amount of cells for each well of the two-fold serial dilution of sera

371 is shown, as DAPI+/Hoechst+ respectively. In the lower, infected cells are visualized,

372 indicated as Alexa594+/mNG+ cells, respectively. (c) Neutralization curves of five

373 representative sera measured by both assays. The graphs show the nonlinear

374 regression fitting calculated for five patients who displayed different neutralization

375 capacity: no, poor, low, medium, and high neutralization. The VNT_{50} for each patient are

376 shown next to each curve. (d) Correlation analysis of VNT_{50} measured by both assays

377 (n=49). (d) Percentage of patients classified according to the VNT_{50} using SCoV2_Tü1.

378 The titers used to classify the sera are shown below the columns: <20, 20-200, 201-400,

379 401-1000 and 1000-2560. Above the columns is shown the percentage of sera that

380 correspond to each category.

381

382

383

384

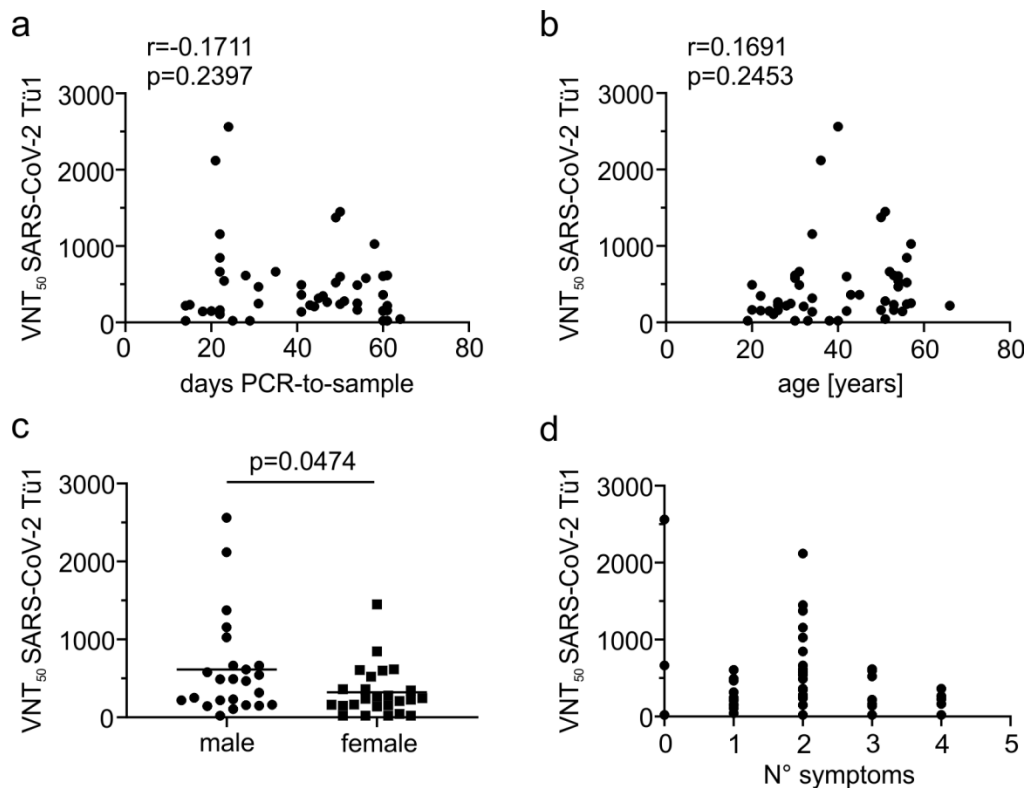
385

386

387

388

389



390

391

392 **Figure 2. Association of patient characteristics with sera VNT₅₀.** The VNT₅₀ of each
393 patient serum was associated with the individual (a) date of the positive SCoV2 qRT-
394 PCR diagnostic test to blood sampling, (b) the age of the patient, (c) the gender and (d)
395 the number of symptoms reported. Statistical analyses were done with an unpaired two-
396 tailed student's t-test. See detailed patient characteristic in Supplementary Table 1.

397

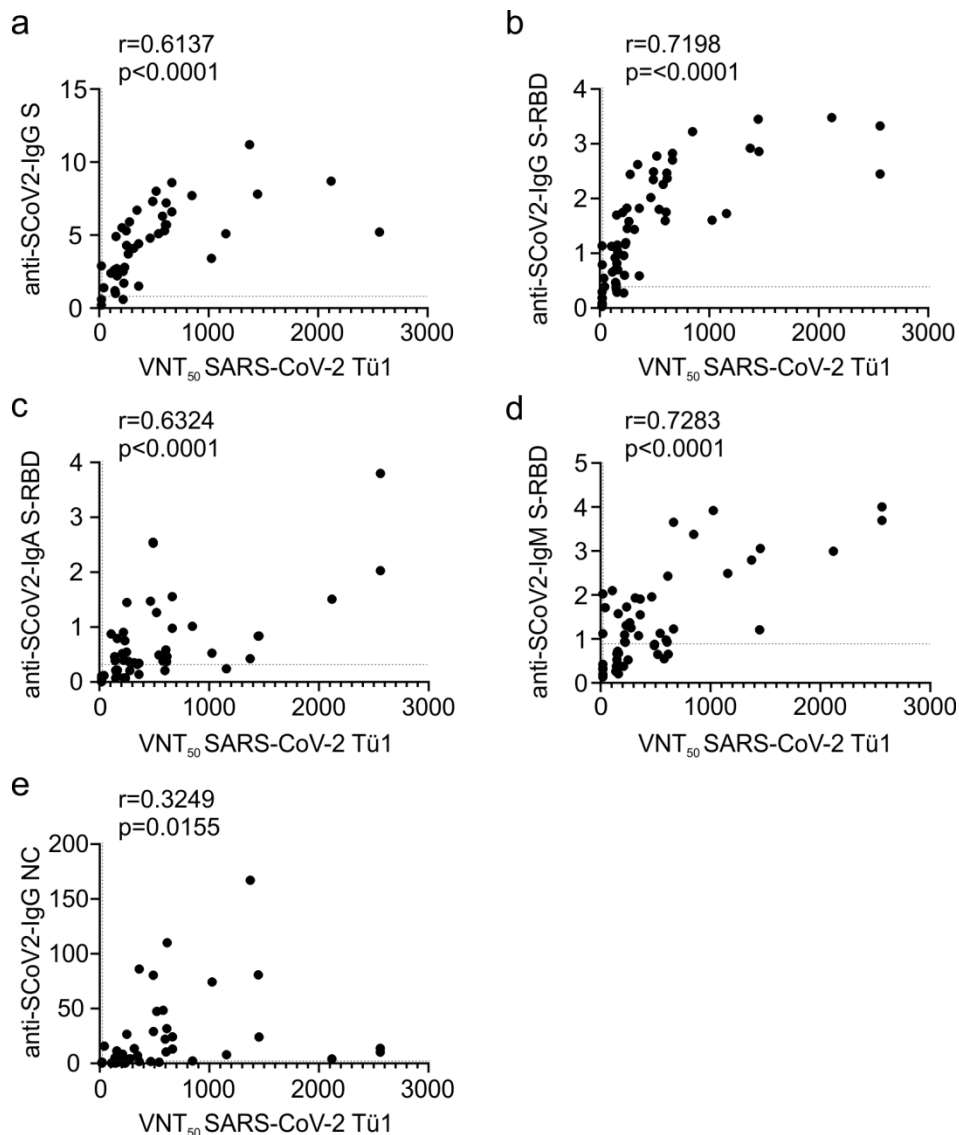
398

399

400

401

402



403

404

Figure 3. Correlation of serological parameters with sera VNT_{50} . The VNT_{50} of each

405

patient serum was correlated with (a) the value of SCoV2-S-specific IgGs measured by

406

the Euroimmune ELISA, (b) the relative quantitative value of SCoV2-S-RBD-specific

407

IgGs measured by the Mediagnost ELISA, (c) the relative quantitative value of SCoV2-S-

408

RBD-specific IgAs measured by the Mediagnost ELISA, (d) the relative quantitative value

409

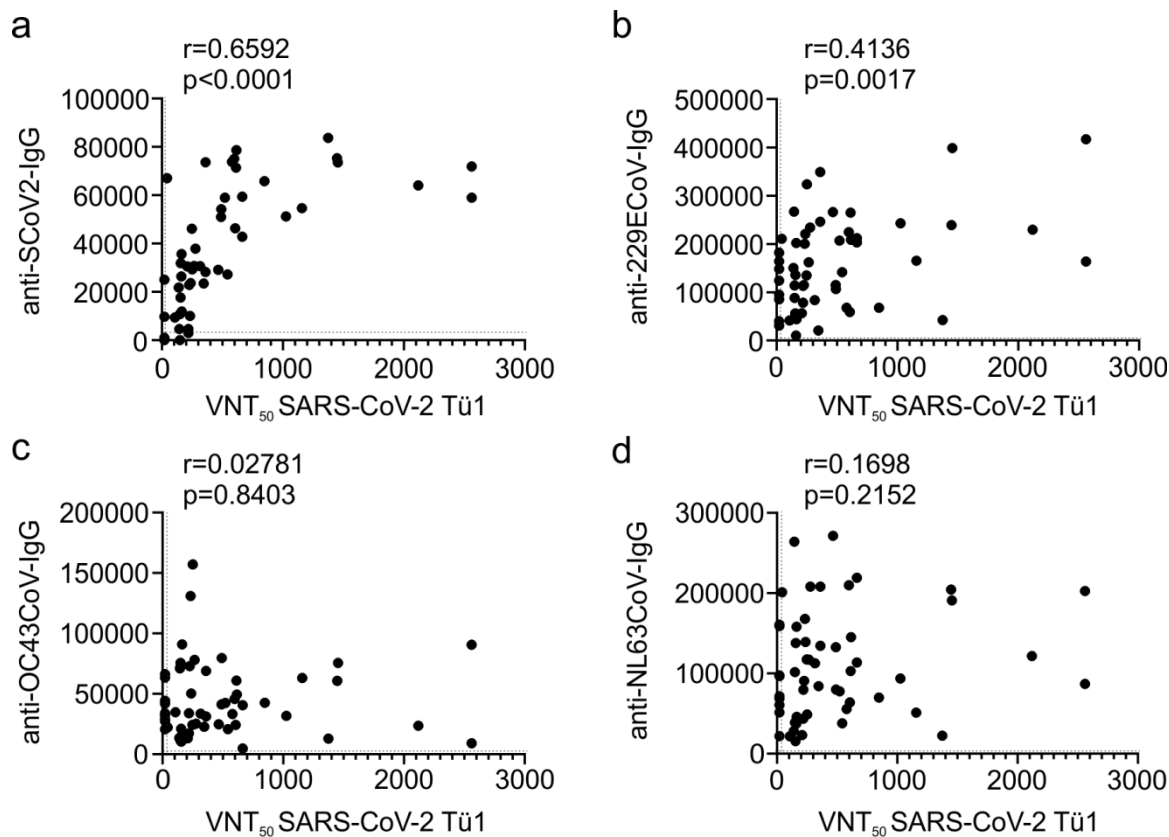
of SCoV2-S-RBD-specific IgMs measured by the Mediagnost ELISA (e) the relative

410

quantitative value of SCoV2-NC-specific IgGs measured by the Roche ECLIA. Dotted

411

lines indicate the respective assay thresholds defined as positive.



412

413

414 **Figure 4. Correlation of antibodies against seasonal coronaviruses with sera**

415 **VNT₅₀.** The VNT₅₀ of each patient serum was correlated with the relative quantitative

416 value of a throughput diagnostic Western blot detection system measuring CoV-specific

417 IgG against (a) SCoV2, (b) CoV-229E, (c) CoV-OC43 or (d) CoV-NL64. Dotted lines

418 indicate the respective assay thresholds defined as positive.

419

420

421

422

423

424

Table 1: Serological parameters of sera and VNT₅₀ values

Patient ID	IgG S	IgG S-RBD	IgG NC	SCoV-2 IgG	VNT50
S11	-	-	-	-	<20
S9	-	-	-	-	<20
S48	-	-	-	-	<20
S2	-	-	-	+	<20
S25	+	+	+	+	20
S47	+		+	+	42,9
S10	+	+	-	+	107,1
S41	+	+	+	+	139,6
S12	+		-	+	143,7
S46	+		-	-	148,5
S7		-	+	+	148,9
S35	+	+	+	+	153,7
S37	+	+	+	+	156,5
S8	+	+	+	+	160,4
S49	+	+	+	+	162,1
S40	+		-	+	164,4
S22	+	+	+	+	208,6
S34	+	+	+	+	218,7
S6	-	-	-	-	219,4
S44	+		+	+	225,2
S1	+	+	-	+	231,8
S26	+	+	+	+	238,2
S21	+	+	+	+	246,9
S32	+	+	+	+	251,2
S29	+	+	+	+	265,8
S45	+	+	+	+	278,1
S24	+	+	+	+	315,5
S30	+	+	+	+	345,3
S38	+		+	+	360,9
S39	+	+	+	+	361,5
S3	+	+	+	+	466
S33	+	+	+	+	489,7
S20	+	+	+	+	490,9
S43	+	+	+	+	521,6
S14	+	+	+	+	542,9
S28	+	+	+	+	579
S42	+	+	+	+	597,7
S27	+	+	+	+	605,7
S17	+	+	+	+	612,7
S36	+	+	+	+	616,1
S18	+	+	+	+	663,6
S5	+	+	+	+	663,6
S4	+	+	+	+	846,7
S31	+	+	+	+	1025
S15	+	+	+	+	1157,1
S19	+	+	+	+	1373,4
S23	+	+	+	+	1447,8
S13	+	+	+	+	2119,5
S16	+	+	+	+	2560
HP_T1	n.a.	+	+	+	2560
HP_T2	n.a.	+	+	+	1454,8
HD1	n.a.	-	-	-	<20
HD2	n.a.	-	-	-	<20
HD3	n.a.	-	-	-	<20
HD4	n.a.	-	-	-	<20

Sera of the 49 patients are ordered by their VNT₅₀ and colour-coded. For the serological tests indicated there is a qualitative indicator for a value above the threshold (+), below the threshold (-) or borderline (0) for the respective assay. At the bottom of the table the control sera are shown. Two consecutive sera of a hospitalized patient (HP_T1/T2) and four sera of healthy donors (HD1-4). All the individual values and the specific patient characteristics are listed in Supplementary Table 1.

426 **Methods**

427 **Study participants and sample processing.** Blood was drawn from potential blood
428 donors for convalescent plasma therapy after written consent at the Clinical
429 Transfusion Medicine, Tübingen between April 04 and May 12, 2020, under the
430 guidelines of the local ethics committees 222/2020BO. All patients (n=49) were older
431 than 18 years old and provided a PCR-confirmed diagnosis of SCov2 (n=46) and three
432 were symptomatic and close contacts to positively diagnosed COVID-19 patients
433 (partners tested positive). All patients were non-hospitalized with asymptomatic to mild
434 courses of disease and they were fully convalescent showing no symptoms on the day
435 of blood donation. Basic demographic information was collected including age and sex,
436 as well as self-perceived symptoms (cough, fever, limb pain and headache, diarrhea,
437 and loss of taste). In addition, blood from four healthy donors and one hospitalized
438 patient was collected (Supplementary Table 1). Serum samples were stored at -80°C.

439 **Cell culture.** Caco-2 (Human Colorectal adenocarcinoma) cells were cultured at 37 °C
440 with 5% CO₂ in DMEM containing 10% FCS, with 2 mM l-glutamine, 100 µg/ml penicillin-
441 streptomycin and 1% NEAA.

442 **Viruses.** A throat swab sample collected in March 2020 at the diagnostic department of
443 the Institute for Medical Virology and Epidemiology of Viral Diseases, University Hospital
444 Tübingen, from a SCoV2 positive patient was used to isolate the virus (200325_Tü1). 50
445 µl of patient material was diluted in media, sterile-filtrated, and used directly to inoculate
446 200.000 Caco-2 cells in a 6-well. 48 hpi (hours post-infection) the supernatant was
447 collected, centrifuged, and stored at -80°C. Supernatant as well as cell lysates from
448 infected cells were tested by Western blot using a SCoV2 anti-nucleocapsid protein (NP)
449 specific antibody (GeneTex). In addition, the identity of the virus was confirmed by qRT-

450 PCR diagnostics via S and E gene amplification. An aliquot of the isolate was used to
451 amplify the virus in a medium flask of Caco-2 cells (2×10^6 cells) in 13 ml DMEM +
452 supplements and 5% FCS. 48 hpi, the supernatant was centrifuged and stored in
453 aliquots at -80°C .

454 The recombinant SCoV2 expressing mNeonGreen (icSARS-CoV-2-mNG) (17) was
455 obtained from the World Reference Center for Emerging Viruses and Arboviruses
456 (WRCEVA) at the UTMB (University of Texas Medical Branch). To generate icSARS-
457 CoV-2-mNG stocks, Caco-2 cells were infected as above, the supernatant was
458 harvested 48 hpi, centrifuged, and stored at -80°C .

459 For MOI determination, a titration using serial dilutions of both virus stocks (200325_Tü1
460 and mNG) was conducted. The number of infectious virus particles per ml was calculated
461 as the $(\text{MOI} \times \text{cell number}) / (\text{infection volume})$, where $\text{MOI} = -\ln(1 - \text{infection rate})$. To
462 reach an infection rate of ~20% an MOI of 0.3 was used for SCoV2-200325_Tü1 and 1.1
463 for SCoV2.mNG.

464 **Enzyme-linked Immunosorbent Assays (ELISAs); Euroimmun**, the Euroimmun
465 SARS-CoV-2-ELISA (IgG) (Euroimmun, Lübeck, Germany) with the recombinant S1
466 target antigen of SARS-CoV-2 was performed according to manufacturer's instructions in
467 serum. Patient samples are diluted 1:101 in sample buffer. The included controls and
468 calibrator in the test kit were used with each run. Results are given as ratios (optical
469 density (OD) of control or clinical sample/OD of calibrator). According to the
470 manufacture, ratios were classified as negative (< 0.8), borderline ($\geq 0.8 - < 1.1$) and
471 positive (≥ 1.1). **Mediagnost**, IgG antibody detection directed to the S1 RBD SCoV2 in
472 human sera using Mediagnost test system was made according to the manufacturer's
473 instructions. Briefly, these tests are two-step enzyme-linked immunosorbent assays. The

474 solid phase consists of a 96-well Microtiter plate (Greiner, Bio-One, Frickenhausen
475 Germany) that is coated with the recombinant SCoV2 spike protein S1. The antibodies
476 from patients that are directed against SCoV2 S1 protein bind to the solid phase coated
477 S1 protein. Next a horseradish peroxidase (HRP) conjugated goat anti-human IgG binds
478 to the human IgG antibodies. The following step involves the substrate for the HRP being
479 added by which the substrate is converted from colorless into blue color; and after
480 addition of a stop solution the color changes to yellow. The extinction of the yellow
481 solution can be measured at a wavelength at 450 nm with reference at 620 nm.
482 Increasing extinctions represent increasing amounts of antibodies to SCoV2 S1 protein.
483 Samples showing extinctions that were three times higher than the negative control can
484 be interpreted as being positive for anti- SCoV2 S1. IgA and IgM antibody detection
485 directed to the SCoV2 S1 protein was made in analogy to the above-described IgG
486 detection system except that the HRP labeled detection antibody was directed against
487 human IgA or human IgM antibodies. According to the manufacture, ratios were
488 classified as negative ($<0,42$), borderline ($\geq 0,42-0,7$) and positive ($\geq 0,7$) for IgG, ($<0,33$),
489 ($\geq 0,33-0,7$) and ($\geq 0,7$) for IgA and ($<0,87$), ($\geq 0,87-1,47$) and ($\geq 1,47$) for IgM.

490 **Elecsys anti-SARS-CoV-2 (Roche).** For qualitative detection of anti SCoV2 (IgG+IgM)
491 antibodies the electrochemiluminescence immunoassay (ECLIA) was performed using
492 the fully automated cobas e 6000/601 immunoassay analyzer (Roche Diagnostics,
493 Mannheim, Germany). This assay targets recombinant SCoV2 nucleocapsid (NC)
494 protein. Two calibrators are used (Cal1 nonreactive, COI 0,101; and Cal2 reactive, COI
495 1,2) in the double antigen-sandwich based assay (SARS-CoV -2 recNC biotin label, and
496 SCoV2 recNC ruthenium complex label). Each, 20 μ l of sera and reference solutions
497 were used, immune complexes are fixed to streptavidin-coated microparticles. Read out

498 is given in relative light units in the form of cutoff index (COI, signal/cutoff). The Elecsys
499 reagents derived from LOT 49500101. For negative control (<150% Cal1), we used
500 pooled sera from 100 mothers at birth of the Tuebingen congenital CMV study 2012.
501 Furthermore, we used a negative control serum from a direct Covid-19 contact person,
502 repeatedly negative tested for SCoV2 RNA and nucleocapsid-specific antibodies without
503 any symptoms during and after a one week close exposition. For positive control, we
504 used a dilution series of a serum from a reconvalescent student infected symptomatically
505 (fever, cough, loss of smell) tested positive for viral RNA and NC-specific antibodies. The
506 COIs ranged from 100 to 1. If the numeric COI result was $\geq 1,0$, the serum was
507 diagnosed as reactive, COI <1,0 were attributed as non-reactive. COI values of the
508 positive controls were stable over at least 2 months.

509 **Multiplexed detection of anti-coronavirus antibodies.** Whole viral protein lysates from
510 229E, OC43, and NL63 (ZeptoMetrix Corp) and from SCoV2 were used for DigiWest as
511 described (13). Viral protein lysates were used for denaturing gel electrophoresis and
512 Western blotting using the NuPAGE system. Blot membranes were washed with PBST
513 (0.1% Tween-20, PBS) and membrane-bound proteins were biotinylated by adding 50
514 μ M NHS-PEG12-Biotin (Thermo Fisher Scientific) in PBST for 1 h. After washing in
515 PBST, membranes were dried overnight. Subsequently, the Western-Blot lanes were cut
516 into 96 strips of 0.5 mm width and were transferred to a 96-well plate (Greiner Bio-One).
517 For protein elution, 10 μ L of elution buffer was added to each well (8 M urea, 1% Triton-
518 X100 in 100 mM Tris-HCl pH 9.5). The protein eluates were diluted with 90 μ L dilution
519 buffer (5% BSA in PBST, 0.02% sodium azide). Neutravidin-coated MagPlex beads
520 (Luminex) of a distinct colour ID were added to the protein eluates and binding was
521 allowed overnight; 500 μ M PEG12-biotin in PBST was added to block remaining

522 Neutraavidin binding sites. The bead containing fractions were pooled and thereby the
523 original Western blot lanes were reconstituted. Beads were washed in PBST and
524 resuspended in store buffer (1% BSA, 0.05 % azide, PBS). The generated bead-set
525 represents the proteomes of the four coronaviruses (SCoV2, OC43, 229E, NL63) and
526 reactivity against all proteins can be tested in one assay.

527 For serum incubation, 5 μ L of the bead mix were equilibrated in 50 μ L serum assay
528 buffer (Blocking Reagent for ELISA (Roche) supplemented with 0.2% milk powder,
529 0.05% Tween-20 and 0.02% sodium azide, 25% Low Cross buffer (Candor Bioscience),
530 25% IgM-reducing agent buffer (ImmunoChemistry). Serum assay buffer was discarded
531 and 30 μ L of diluted patient serum (1:200 in serum assay buffer) was added and
532 incubated for 2 hours at RT on a shaker. After washing in PBST, 30 μ L of Phycoerythrin
533 labelled anti-human IgG secondary antibody (diluted 1:200 in serum assay buffer;
534 Dianova) was added and incubated for 45 min at 23 °C. The beads were washed twice
535 with PBST and readout was performed on a Luminex FlexMAP 3D.

536 The DigiWest analysis tool was used to assess serum reactivity against the viral proteins
537 (13). Virus protein-specific peaks were identified and average fluorescence intensity
538 (AFI) values were calculated by integration of peak areas.

539 **Neutralization assay.** For neutralization experiments, 1×10^4 Caco-2 cells/well were
540 seeded in 96-well plates the day before infection in media containing 5% FCS. Cells
541 were co-incubated with SARS-CoV-2 clinical isolate 200325_Tü1 at a MOI=0.3 and
542 patient sera in serial two-fold dilutions from 1:20 up to 1:2560. 48 hpi cells were fixed
543 with 80% acetone for 5 minutes, washed with PBS, and blocked for 30 minutes at room
544 temperature (rt) with 10 % normal goat serum (NGS). Cells were incubated for 1 h at rt
545 with 100 μ l of serum from a hospitalized convalescent donor in a 1:1000 dilution and

546 washed 3 times with PBS. 100 μ l of goat anti-human Alexa594 1:2000 in PBS was used
547 as secondary antibody for 1h at rt. Cells were washed 3 times with PBS and counter-
548 stained with 1:20000 DAPI solution (2 mg/ml) for 10 minutes at rt. For quantification of
549 infection rates images were taken with the Cytation3 (Biotek) and DAPI+ and Alexa594+
550 cells were automatically counted by the Gen5 Software (Biotek).

551 Alternatively, Caco-2 cells were co-incubated with the SARS-CoV-2 strain icSARS-CoV-
552 2-mNG at a MOI=1.1 and patient sera in serial two-fold dilutions from 1:40 up to 1:5120.
553 48 hpi cells were fixed with 2% PFA and stained with Hoechst33342 (1 μ g/mL final
554 concentration) for 10 minutes at 37°C. The staining solution was removed and
555 exchanged for PBS. For quantification of infection rates images were taken with the
556 Cytation3 (Biotek) and Hoechst+ and mNG+ cells were automatically counted by the
557 Gen5 Software (Biotek). Virus neutralizing titers (VNT_{50}) were calculated as the half-
558 maximal inhibitory dose (ID₅₀) using 4-parameter nonlinear regression (GraphPad
559 Prism).

560 **Software and statistical analysis.** GraphPad Prism 8.0 was used for statistical and
561 correlation analyses and to generate graphs. Figures were generated with CorelDrawX7.
562 Other software used included Gen5 v.3.04.

563