



35 **Abstract**

36

37 **Objectives** – To investigate longitudinal trajectory of SARS-CoV-2 neutralising antibodies and the  
38 performance of serological assays in diagnosing prior infection and predicting serum neutralisation  
39 titres with time

40

41 **Design** Retrospective longitudinal analysis of a COVID19 case cohort .

42

43 **Setting** NHS outpatient clinics

44

45 **Participants** Individuals with RT-PCR diagnosed SARS-CoV-2 infection that did not require  
46 hospitalization

47

48 **Main outcome measures** The sensitivity with which prior infection was detected and quantitative  
49 antibody titres were assessed using four SARS-CoV-2 serologic assay platforms. Two platforms  
50 employed SARS-CoV-2 spike (S) based antigens and two employed nucleocapsid (N) based  
51 antigens. Serum neutralising antibody titres were measured using a validated pseudotyped virus  
52 SARS-CoV-2 neutralisation assay. The ability of the serological assays to predict neutralisation  
53 titres at various times after PCR diagnosis was assessed.

54

55 **Results** The three of the four serological assays had sensitivities of 95 to 100% at 21-40 days post  
56 PCR-diagnosis, while a fourth assay had a lower sensitivity of 85%. The relative sensitivities of the  
57 assays changed with time and the sensitivity of one assay that had an initial sensitivity of >95%  
58 declined to 85% at 61-80 post PCR diagnosis, and to 71% at 81-100 days post diagnosis. Median  
59 antibody titres decreased in one serologic assay but were maintained over the observation period  
60 in other assays. The trajectories of median antibody titres measured in serologic assays over this  
61 time period were not dependent on whether the SARS-CoV-2 N or S proteins were used as  
62 antigen source. A broad range of SARS-CoV-2 neutralising titres were evident in individual sera,  
63 that decreased over time in the majority of participants; the median neutralisation titre in the cohort  
64 decreased by 45% over 4 weeks. Each of the serological assays gave quantitative measurements  
65 of antibody titres that correlated with SARS-CoV-2 neutralisation titres, but, the S-based  
66 serological assay measurements better predicted serum neutralisation potency. The strength of  
67 correlation between serologic assay results and neutralisation titres deteriorated with time and  
68 decreases in neutralisation titres in individual participants were not well predicted by changes in  
69 antibody titres measured using serologic assays.

70

71 **Conclusions** – SARS-CoV-2 serologic assays differed in their comparative diagnostic  
72 performance over time. Different assays are more or less well suited for surveillance of populations  
73 for prior infection versus prediction of serum neutralisation potency. Continued monitoring of  
74 declining neutralisation titres during extended follow up should facilitate the establishment of  
75 appropriate serologic correlates of protection against SARS-CoV-2 reinfection.

76 **Introduction**

77 The emergence of severe acute respiratory syndrome coronavirus 2 (SARS-CoV-2), the  
78 causative agent of COVID-19, has resulted in a global pandemic with hundreds of thousands of  
79 deaths and millions of illnesses. Diagnosis of SARS-CoV-2 infection is principally dependent on  
80 RT-PCR using nasal and throat swabs, which is not ideally suited to mass population testing and  
81 as such has largely been targeted at symptomatic individuals in many settings. RT-PCR-diagnosed  
82 case numbers have therefore underestimated the prevalence of SARS-CoV-2 infection, and  
83 serology assays must be deployed to determine the true number of infections using a surveillance  
84 approach. Serology assays also have a critical role in screening volunteers for vaccine trials and  
85 convalescent plasma donations, as well as predicting infection or vaccine-induced immunity.  
86 Although several commercially available SARS-CoV-2 immunoassays are in common use,  
87 evaluation of their sensitivity has often used samples from hospitalised patients soon after  
88 infection. Knowledge of the long-term kinetics of antibody titres and the corresponding  
89 effectiveness of commercial assays is imperative if these testing protocols are to be accurately  
90 interpreted<sup>1-3</sup>.

91 Serology assays for SARS-CoV-2 primarily employ viral nucleocapsid (N) or the spike  
92 surface protein (S) antigens. Because S binds to target cells through its receptor binding domain  
93 (RBD) it is the target of neutralising antibodies. Therefore, S-based assays may be preferable to N-  
94 based assays for the assessment of the risk of future re-infection<sup>4</sup>. Of course, this premise is  
95 based on the assumptions (1) that neutralising antibodies constitute a major mechanism of  
96 protective immunity, and (2) that S-based serology assays accurately predict neutralising antibody  
97 activity.

98 Thus, major outstanding questions remain about the utilisation of serology that have  
99 implications for ongoing public health testing strategies for SARS-CoV-2. These questions include  
100 (1) how circulating antibody levels that are specific for each viral antigen change with time following  
101 natural infection and (2) which serological assays best predict protective immunity. As yet, the  
102 prognostic value of antibody measurements in situations where individuals may be re-exposed to  
103 reinfection has yet to be demonstrated. Nevertheless, it is important to understand post infection  
104 serology as measured using high throughput assays to enable correlates of protection to be

105 established. Here, we present the results of a longitudinal antibody testing study on a cohort of  
106 mildly symptomatic, non-hospitalised COVID19 positive patients during the first few months of  
107 convalescence. We compare the ability of four high-throughput automated assays to diagnose  
108 prior SARS-CoV2 infection and to predict neutralising activity in convalescent serum.

109

## 110 **Methods**

111

### 112 **Participants**

113 Participants with prior RT-PCR-diagnosed COVID-19 were recruited. Recruits were surveyed to  
114 determine the date of the positive PCR test, the date of onset of symptoms, and if their symptoms  
115 required hospitalisation. Serum samples were taken at a baseline visit (~3.5 to ~8.5 weeks post  
116 PCR test), and 2 weeks (visit 2), 4 weeks (visit 3) and 8 weeks later (visit 4). In total, 97  
117 participants, who were not hospitalised during the course of their illness completed at least 3 visits.  
118 The mean age of the participants was 44.2 years (21 – 65 y), with 70 female (72% of cohort)  
119 participants. At visit 1 (baseline), the average number of days between PCR test and visit 1  
120 (baseline) was 40.8 days (24 – 61 days); at visit 2 (2 weeks post-baseline), the average number of  
121 days post-PCR test was 55.1 days (40 – 79 days); at visit 3 (4 weeks post-baseline), the average  
122 number of days post-PCR test was 69.8 days (55 – 95 days); at visit 4 (8 weeks post-baseline), the  
123 average number of days post-PCR test was 98.4 days (85 – 110 days). Ethical approval was  
124 obtained for this study to be carried out through the NHS Lothian BioResource. All recruits gave  
125 written and informed consent for serial blood sample collection. Patients and Public were not  
126 involved in the design of this research.

127

### 128 **High throughput automated serology assays**

129 Four commercial assays, that employ either S or N protein antigens and are designed for high  
130 throughput in healthcare settings were used. All the assays generate a qualitative positive/negative  
131 result based on assay-dependent signal thresholds. The Abbott SARS-CoV-2 IgG assay detects  
132 anti-N IgG using a two-step chemiluminescent microparticle immunoassay (CMIA) method with an  
133 acridinium-labelled anti-human IgG. The DiaSorin SARS-CoV-2 IgG assay is also a two-step CMIA

134 method targeting undisclosed epitopes in the SARS-CoV-2 S protein and employs an isoluminol  
135 conjugated anti-human IgG. The Roche Anti-SARS-CoV total antibody assay is a two-step bridging  
136 electrochemiluminescent immunoassay (ECLIA) using ruthenium-labelled and biotin conjugated N  
137 protein. The Siemens SARS-CoV-2 total antibody assay is a one-step bridging CLIA method that  
138 detects antibodies against the RBD of the S protein, using acridinium and biotinylated S1 RBD.  
139 Assays were performed on the Abbott Architect and Diasorin Liason platforms (NHS Lothian), and  
140 the Roche Elecsys (NHS Lanarkshire) and Siemens Atellica (NHS Tayside) platforms. Serum,  
141 collected and stored according to the manufacturer's recommendations, was used in all cases.

142

### 143 **SARS-CoV-2 Neutralisation assays**

144 To measure neutralising antibody activity, serial dilutions of serum, beginning with a 1:12.5 dilution  
145 were five-fold serially diluted in 96-well plates over four dilutions. Thereafter, approximately  $5 \times 10^3$   
146 infectious units of an HIV/CCNG/nLuc/SARS-CoV-2 pseudotype virus were mixed with the serum  
147 dilutions at a 1:1 ratio and incubated for 1 hour at 37 degrees in a 96-well plate. The mixture was  
148 then added to 293T/ACE2cl.22 target cells<sup>5</sup> plated at  $1 \times 10^4$  cells/well in 100  $\mu$ l medium in 96-well  
149 plates the previous day. Thus, the final starting serum dilution was 1:50. Cells were cultured for  
150 48h and harvested for NanoLuc luciferase assays, as previously described<sup>5</sup>.

151

### 152 **Results**

153 The cohort studied herein consists of participants who were not hospitalised during the course of  
154 their illness and were therefore relatively mildly symptomatic. Participants were invited to report on  
155 the occurrence and frequency of symptoms. Approximately 70% of people reported at least one of  
156 the 3 main WHO -identified symptoms, namely fever, cough and anosmia. The most common of  
157 symptom was anosmia and the majority of participants reported the presence of 2 of these 3  
158 symptoms (Table 1). Serum samples were collected from 97 participants at ~ 4 weeks (visit 1), 6  
159 weeks (visit 2) and 8 weeks (visit 3) post diagnosis (by RT-PCR). Additionally, serum was collected  
160 from a subset (28 of the 97 participants) at ~ 12 weeks post diagnosis (visit 4).

161

162

163 **Table 1 Percentage of participants per cohort displaying the three main WHO symptoms**

	<b>Fever</b>	<b>Cough</b>	<b>Anosmia</b>	<b>0 of 3 symptoms</b>	<b>1 of 3 symptoms</b>	<b>2 of 3 symptoms</b>	<b>All 3 symptoms</b>	<b>Self-reported recovered</b>
Reported symptom	65	69	74	1	19	42	35	44
%	67%	71%	76%	1%	16%	43%	36%	49%

164 N = 97 for all reported symptoms apart from "self-reported recovered", where only 90 individuals responded to this survey question

165

166

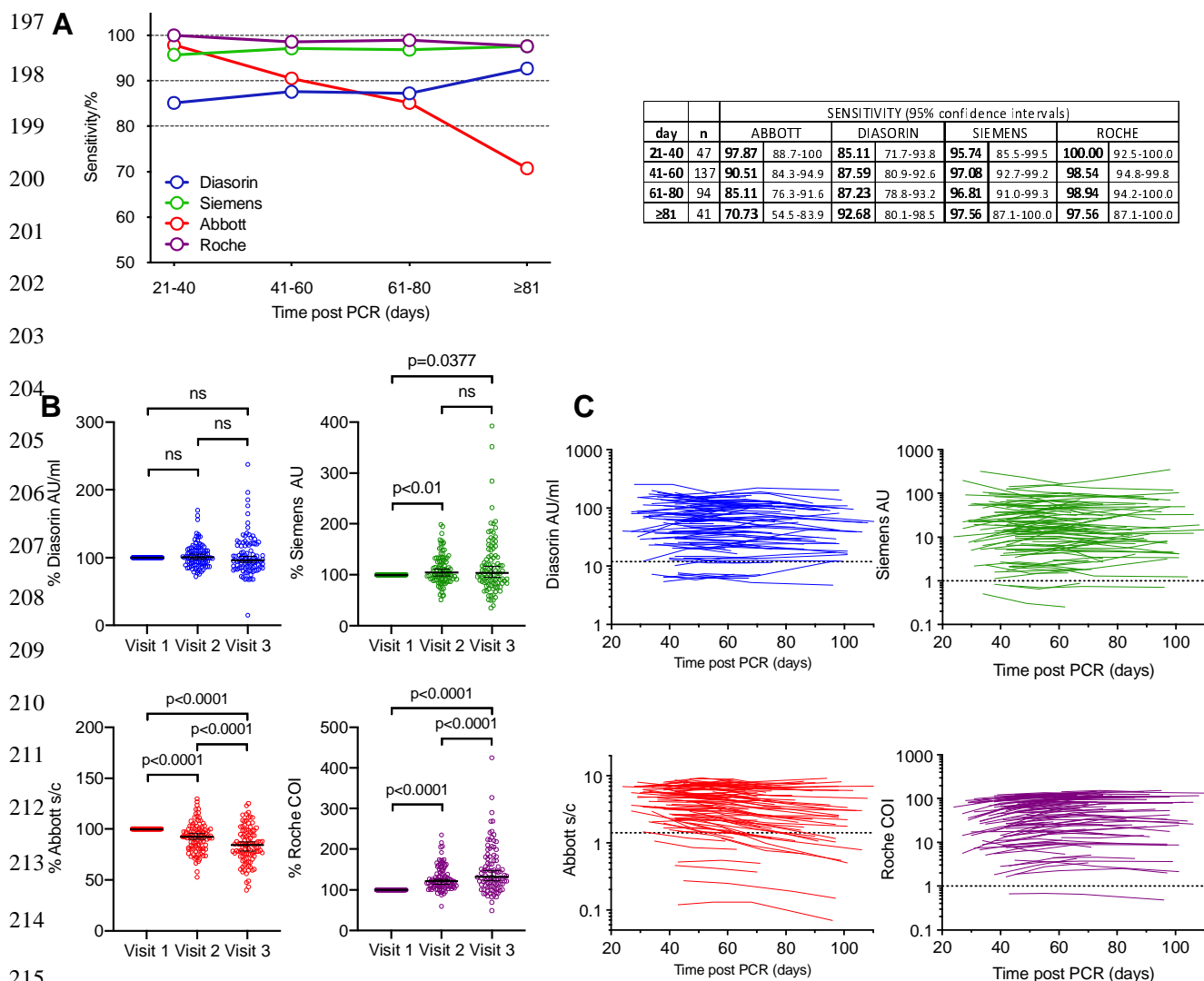
167 We compared the diagnostic sensitivity of 4 high throughput SARS-CoV-2 serology assays  
 168 that are in routine use in hospital settings. Each assay gives a qualitative positive or negative  
 169 result, based on assay specific thresholds and sensitivities were calculated for each assay using  
 170 these thresholds. Inter and intra-assay analytical precision for each assay is detailed in  
 171 Supplementary Table 1. To account for the differences in time post PCR diagnosis that participants  
 172 made their first visit, sensitivity across a 20 day rolling time window was calculated. The Abbott,  
 173 Roche and Siemens assays all had sensitivities of 95 to 100% at 21-40 days post PCR-positive  
 174 test, while the Diasorin assay had a lower sensitivity of 85% (fig 1A). However, the relative  
 175 sensitivities of the assays changed with time. Specifically, the sensitivity of the Abbott assay  
 176 declined to 85% in the 61-80 day window, and 71% at >81 days post diagnosis (fig 1A).  
 177 Conversely, the sensitivities of the other assays were maintained or increased over time (fig 1A). In  
 178 terms of intra-individual change, 14/91 participants that were positive on the Abbott assay at visit 1  
 179 were negative by visit 3 or 4, whereas none of the participants with a positive result at visit 1 on the  
 180 other assays became negative at visit 3 or 4. For the Diasorin assay, 2 participants that were  
 181 negative at visit 1 were positive at visit 3 (both participants had an equivocal result at visit 1, and  
 182 showed a small increase above the assay threshold at visit 3). In the Siemens assay, 3 participants  
 183 were consistently negative, and in the Roche assay only a single participant was negative at each  
 184 visit.

185

186 The serological assays give a quantitative assessment of antibody titre as well as a threshold-  
 187 based positive/negative result. We next analysed changes in the quantitative results over time for  
 188 each platform (fig 1 B, C). Mean antibody titres decreased in the Abbott assay at visits 2 and 3

189 compared to visit 1 (fig 1B) but increased in the Diasorin and particularly the Roche assays and  
 190 remained approximately constant in the Siemens assay (Fig1 B). Notably, 79 out of 97 (81%) of  
 191 participants showed a decrease in antibody titre on the Abbott platform, while 82/97 (85%) showed  
 192 an increase on the Roche assay, despite the fact that both assays detect N-specific antibodies (fig  
 193 1 B, C). Negative or positive change was approximately equally likely in the S-based assays;  
 194 specifically, 57% and 47% of intra-individual changes were negative for the Diasorin and Siemens  
 195 assays respectively (fig 1 B, C).

196



216 **Fig 1. Longitudinal analysis of COVID-19 participant sera. (A)** Sensitivity of the Abbott, Diasorin, Siemens and Roche serological  
 217 assays (as indicated) measured in samples collected at four different timepoints, as indicated, post PCR test and 95% confidence  
 218 interval. **(B)** Relative antibody titres for the Diasorin, Siemens, Abbott and Roche, assays at visits 1-3, normalized to visit 1. Horizontal  
 219 line indicates median value with 95% confidence interval. Statistical significance was assessed with the Wilcoxon test. **(C)** Values for

220 Diasorin, Siemens, Abbott and Roche serological assays for each participant plotted over time (each line represents one participant).  
221 Assay thresholds are indicated by a dotted horizontal line.

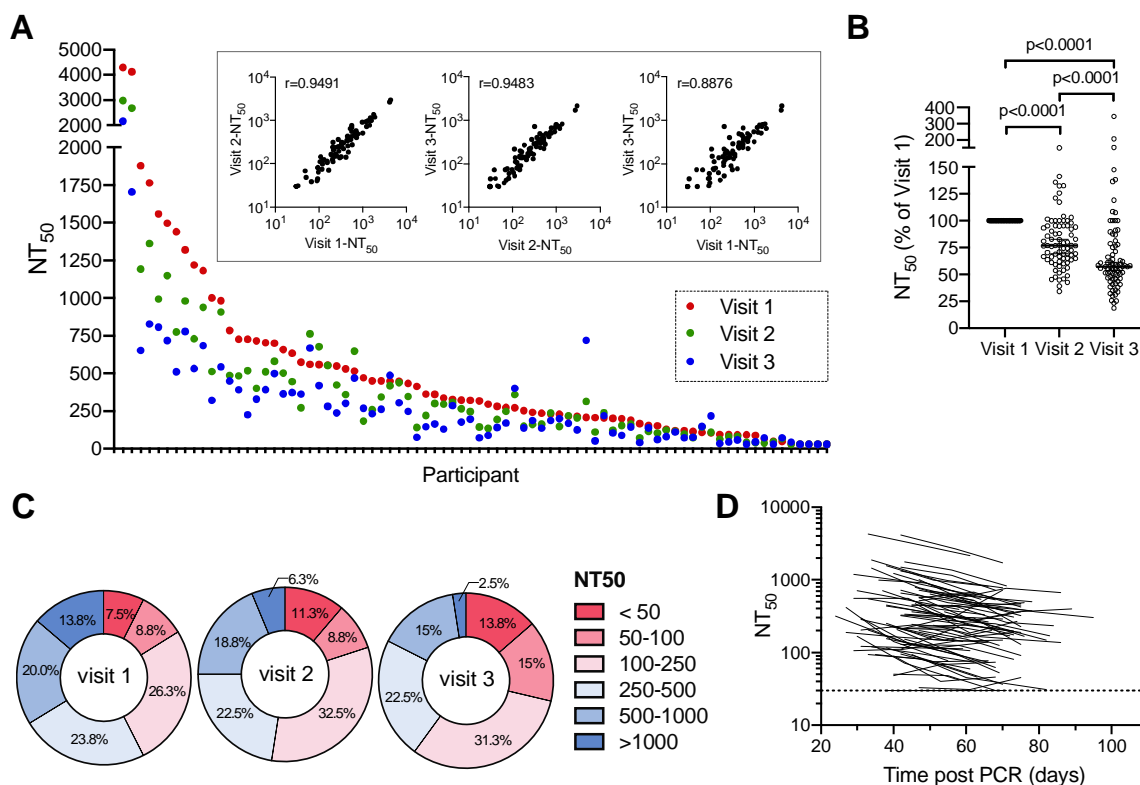
222

223

224 We measured neutralising activity in serum samples from the first 3 visits for 80 of the 97  
225 participants using a SARS-CoV-2 pseudotyped virus neutralisation assay. This assay employs  
226 HIV-1-based virions carrying a nanoluciferase reporter, pseudotyped with the SARS-CoV-2  
227 spike protein. We have previously shown that neutralisation titres obtained using these  
228 pseudotyped particles correlate well with titres obtained using neutralisation of authentic SARS-  
229 CoV-2<sup>5</sup>. Moreover, this assay has been successfully applied for analysis of convalescent plasma  
230 samples and in a campaign to identify potent human monoclonal antibodies<sup>6,7</sup>. Consistent with our  
231 analyses of other cohorts<sup>6,7</sup>, a broad range of neutralising titres were evident in sera collected from  
232 80 participants at three timepoints (fig 2A). In samples collected at visit 1, the neutralising activity,  
233 as determined by half-maximal neutralising titre (NT<sub>50</sub>), ranged from <30 to 4300, with a geometric  
234 mean of 234 (arithmetic mean was 411) (fig 2A, red symbols). Consistent with other cohorts<sup>6,7</sup>  
235 34/80 (42%) had NT<sub>50</sub> of less than 250 while only in 11/80 participants (14%) had NT<sub>50</sub> values  
236 higher than 1000.

237 NT<sub>50</sub> values measured at each timepoint for individual participants correlated with each  
238 other, although there was divergence in NT<sub>50</sub> values over time (fig 2 A inset). Notably, neutralising  
239 activity decreased at each time point for the majority of participants (fig 2 A, blue and green  
240 symbols). Overall, the decrease in median NT<sub>50</sub> was ~25% per two-week sampling interval,  
241 resulting in a ~45% reduction in NT<sub>50</sub> over the 4 weeks between visit 1 and visit 3 (fig 2B). As a  
242 result, distribution of NT<sub>50</sub> values the cohort differed between visits (fig 2C). The relative decline in  
243 NT<sub>50</sub> between visits 1 and 2 versus visits 2 and 3 did not differ significantly, and the majority of  
244 participants exhibited a similar relative decrease in neutralising activity over time, regardless of  
245 their initial NT<sub>50</sub> values or the number of days post PCR at visit 1, suggesting exponential decay  
246 (fig 2D).





247

248 **Fig 2 – Neutralisation activity in COVID-19 participant sera.** (A) Half-maximal neutralisation titres (NT<sub>50</sub>s) for each individual  
 249 participant measured in serum samples collected at three different visits, as indicated by color. Inserts show correlation of NT<sub>50</sub> values  
 250 for samples collected at each visit, the spearman r is indicated (p<0.0001). (B) Relative NT<sub>50</sub> values in sera obtained at visit 1 to 3,  
 251 normalized to visit 1. Horizontal line represents median with 95% confidence interval. Statistical significance was assessed with the  
 252 Wilcoxon test. (C) Frequency of sera with NT<sub>50</sub> values falling to various quantitative categories at each visit. (D) NT<sub>50</sub> values for each  
 253 participant plotted over time (each line represents one participant). The limit of detection (LOD) is indicated by a dotted horizontal line.

254

255

256 NT<sub>50</sub> values at each sampling timepoint were poorly correlated with age (Supplementary fig  
 257 1A), and no correlation was observed between age and NT<sub>50</sub> decay with time. As has been  
 258 previously reported, there was a trend toward lower NT<sub>50</sub> values in females than in males<sup>6,7</sup>, but  
 259 there was no difference between sexes in NT<sub>50</sub> decay with time (Supplementary fig 1B). Individual  
 260 clinical parameters such as GI symptoms, fever or recovery time, did not predict NT<sub>50</sub>, serological  
 261 values or decay parameters for any antibody measurement.

262 Next, we compared neutralising activity in serum with quantitative results obtained from the  
 263 serological assays. Analysis of combined results from the three visits by 80 participants revealed a  
 264 significant correlation between any combination of two serological assays (Supplementary fig 2).

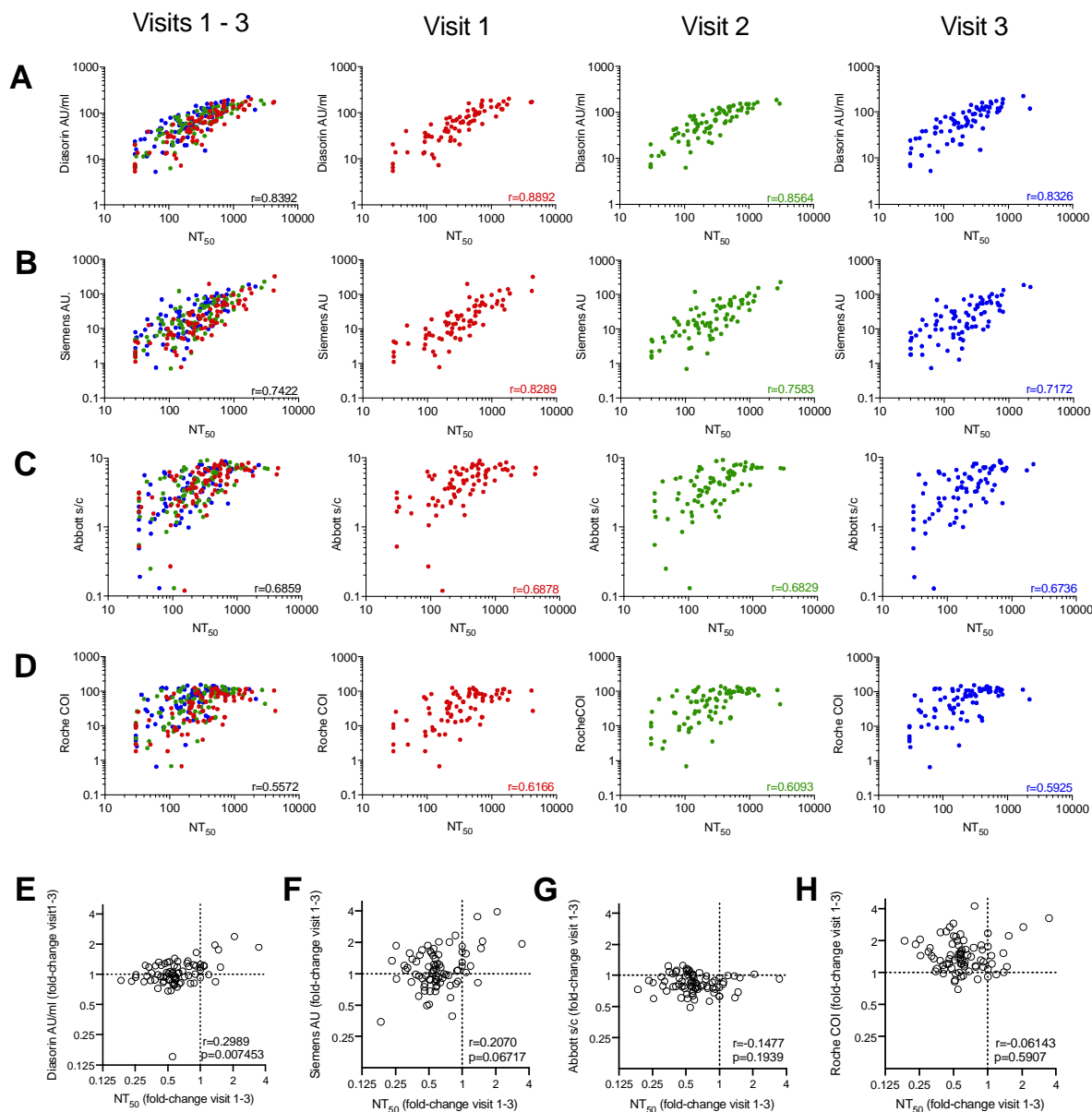
265 However, stronger correlations were observed between the two S-based assays, Siemens and  
266 Diasorin ( $r=0.92$ ,  $p<0.0001$ ) and between the two N-based assays Abbott and Roche ( $r=0.81$ ,  
267  $p<0.0001$ ), The S-based assays correlated less well, but significantly ( $p<0.0001$ ), with the N-based  
268 assays (Supplementary fig 2).

269 All the serological assays gave quantitative values that correlated with  $NT_{50}$  measurements,  
270 but as expected, the S-based assay measurements correlated more closely with  $NT_{50}$   
271 measurements (fig 3A-D). The S1/S2-based Diasorin assay, was the best predictor of  $NT_{50}$   
272 ( $r=0.84$ ,  $p<0.0001$ , fig 3A), followed by the RBD-based Siemens assay ( $r=0.74$ ,  $p<0.001$ , fig 3B),  
273 the N-based Abbott assay ( $r=0.69$ ,  $p<0.0001$ , fig 3C) and, lastly, the Roche assay ( $r=0.56$ ,  
274  $p=0.0001$ , Fig3D).

275 The correlation between  $NT_{50}$  and the individual serological assays was best at the first visit  
276 and deteriorated to some extent thereafter (fig 3A-D, see color-coded r-values in individual graphs,  
277  $p<0.0001$  for all correlations), The decrease in the strength of correlation might, in part, be  
278 attributable to the fact that later sampling timepoints have more samples with lower  $NT_{50}$  values,  
279 which may reduce measurement precision. The magnitude of the deterioration in the predictive  
280 value differed between serological assays, with the S-based assays exhibiting larger decreases in  
281 correlation coefficients ( $r=0.89$  and  $0.83$  at visit 1, versus  $r=0.83$  and  $0.71$  at visit 3 for DiaSorin and  
282 Siemens assays respectively fig 3A-D), Despite the increasing disparity over time, the DiaSorin  
283 assay was clearly superior at predicting  $NT_{50}$  at all visits (fig 3A-D).

284 Interestingly, comparison of the extent of change in neutralisation activity over the 4-week  
285 observation interval with the concomitant change in values obtained using serological assays,  
286 revealed only minimal correlation (fig 3E-H, supplementary fig 3). Notably, in most participants, the  
287 decline in serum neutralising activity was clearly greater than the decline in antibody titre measured  
288 using any serological assay (fig 3E-H supplementary fig 3). Even for the Diasorin assay, which  
289 gave the best prediction of neutralising activity at each time point (fig 3A), declines in neutralising  
290 activity were not well predicted by declines in Diasorin assay measurements (fig 3E,  
291 supplementary fig 3). While both the Abbott assay and the  $NT_{50}$  measurements exhibited declining  
292 antibody titres with time, the magnitudes of these declines did not correlate with each other (fig 3G,  
293 supplementary fig 3).

294



295

296 **Fig 3 – Correlation of serology results with neutralisation titres.** (A-D) Serological assay values for the Diasorin (A), Siemens (B),  
 297 Abbott (C) and Roche (D) assays versus NT<sub>50</sub> values. Samples collected at each visit are indicated by color and are plotted individually  
 298 as well as on a composite graph. Spearman r for all visits (black) and individual visits are indicated (p<0.0001). (E-H) Fold-change (visit  
 299 1 to visit 3) in serological assay values for the Diasorin (E), Siemens (F), Abbott (G) and Roche (H) assay versus fold-change in NT<sub>50</sub>  
 300 values. Spearman r and p-value are indicated.

301

## 302 Discussion

303 Serological assays for infectious agents have two major and distinct uses, namely (1) to  
 304 diagnose chronic infections (e.g. HIV-1) and (2) to determine past infection or immunisation status

305 (e.g. measles, VZV) which may be able to predict immunity from future infection. For example,  
306 HIV-1 and HCV serological tests are crucial for diagnosis but have no role in prediction of  
307 immunity. In contrast, for viruses such as VZV and measles, the main role of serology is to predict  
308 immunity induced by vaccination or prior infection. The use of serological assays to determine  
309 widespread seroprevalence is a relatively new application following the COVID19 pandemic, which  
310 is different from how these assays have traditionally been used clinically and requires  
311 understanding of how these assays perform in populations over time.

312 During the current SARS-CoV-2 pandemic it has become clear that the magnitude of  
313 serologic immune responses is highly variable<sup>6,7</sup>. Nevertheless, the vast majority of individuals with  
314 a PCR-confirmed SARS-CoV-2 infection generate antibodies at a sufficient level for diagnosis of  
315 recent infection<sup>8</sup>. A number of commercial assays have been deployed for high throughput SARS-  
316 CoV-2 antibody testing in a clinical setting, and evaluated mostly using hospitalized participants<sup>9,10</sup>.  
317 Non-hospitalised patients and those with mild disease typically have lower levels of antibodies than  
318 hospitalized patients with severe illness<sup>11-15</sup>. Using our cohort of non-hospitalized participants with  
319 mild disease, all four assays evaluated herein had sensitivities at visit 1 (an average of 40.8 days  
320 after PCR testing) that were comparable to the evaluations performed for these platforms using  
321 hospitalised patients<sup>16</sup>. This would therefore make all four assays suitable for the detection of  
322 COVID-19 antibodies shortly after infection as a confirmatory test for diagnostic purposes, when  
323 used in conjunction with RT-PCR assays and clinical history

324 However, differences in assay diagnostic sensitivity become apparent at later time points.  
325 Specifically, the sensitivity of the widely used Abbott assay declined with time, to ~70% at >81  
326 days post PCR. Consequently, this assay is not appropriate for seroprevalence studies, for  
327 identification of SARS-CoV-2 naive vaccine trial participants, or for investigation of individuals  
328 presenting with long term chronic symptoms. Altering the positive/negative threshold, may mitigate  
329 this issue<sup>17</sup>, but would not ultimately alter the downward trend in assay signal over time. Notably  
330 our study is one of the few that would capture this information, as most other studies have  
331 examined seroconversion at early time points<sup>14,18-20</sup>. Reasons for the differences in assay  
332 performance over time are unclear but cannot be attributed solely to the choice of antigen.  
333 Although other studies have attributed a decline in sensitivity of an N based assay to an inherent

334 difference in the dynamics of S versus N antibodies<sup>21</sup> our findings do not support this contention, at  
335 least during the first ~100 days of convalescence. Both Abbott and Roche assays employ the N-  
336 proteins as an antigen, but Abbott assay titres decline while those in the Roche assay increase  
337 during this time period. One possible explanation for this difference is the use of an antigen  
338 bridging approach in the Roche assay, where declines in the total amount of antibody might be  
339 compensated by increases in affinity or avidity as antibodies mature through somatic  
340 hypermutation. Alternatively, it is possible that the range of N epitopes recognized by sera might  
341 change with time. Whatever the explanation, it is clear that that the trajectories of antibody titres  
342 measured using assays based on recognition of the same or related antigens can differ<sup>22-25</sup>.  
343 Overall, given their superior sensitivity at each of the time points investigated thus far, the Siemens  
344 and Roche assays appear most appropriate for diagnosis of prior SARS-CoV-2 infection, at least  
345 within 4 months of SARS-CoV-2 infection, and would report a higher population prevalence than  
346 Abbott or DiaSorin assays in the 1 to 4 month post infection period.

347 While the Roche assay exhibited the best diagnostic sensitivity and is therefore well suited  
348 for serosurveillance during this time period, it had the lowest ability to predict neutralising antibody  
349 titres. This finding might be expected, as neutralising antibodies are directed to the S protein while  
350 N-specific antibodies are not expected to be neutralising. The Diasorin assay best predicted  
351 neutralising titres, and marginally outperformed the Siemens assay in this regard, perhaps  
352 because the dominant neutralising and/or S-binding activity in at least some sera is provided by  
353 antibodies that recognize epitopes outside the RBD<sup>26,27</sup>. It is important to recognize however, that  
354 many S-binding antibodies are not neutralising – measurements of S-binding antibodies remain  
355 correlates of, and not direct measures of, neutralising antibodies<sup>7</sup>.

356 Very recent reports have also indicated that neutralising antibody titres decline with time<sup>23</sup>  
357 <sup>24</sup>, while another study reported that neutralisation titres remained stable for at least 3 months post  
358 infection<sup>28</sup>. However, in the latter case neutralisation titres were inferred based on a serologic  
359 ELISA measurement that was calibrated using a neutralisation assay performed on a small subset  
360 of samples. As shown herein, neutralising antibody levels indeed decline in most patients, even  
361 those who apparently maintain S-binding or RBD-binding antibody titres measured in serology  
362 assays. Thus, the trajectory of neutralising antibody levels cannot necessarily be deduced from

363 serologic measurements of S-binding antibodies, even though S-binding antibodies and  
364 neutralising titres are broadly correlated.

365 Key questions in SARS-CoV-2 serology are the trajectory of of the antibody response and  
366 to what degree the titres of neutralising antibodies, or antibodies that simply bind to S or N  
367 correlate with protection from reinfection or severe disease. Serological studies based on hCoV  
368 infection have shown that many adults possess detectable circulating antibodies against OC43 and  
369 229E<sup>29</sup>, and children seroconvert to NL63 and 229E before ~3.5 years of age<sup>30</sup>. These baseline  
370 levels increased upon infection, returning to baseline within one year. High levels of circulating  
371 neutralising antibody correlated with protection from re-infection with the same strain of virus<sup>31 32</sup>.  
372 However, hCoV re-infections occur<sup>32 33</sup>, with more mild illness and shorter duration of virus  
373 shedding. Thus, in the case of seasonal hCoV, these data suggest that immunity may wane over  
374 time. More limited data is available for SARS-CoV and MERS-CoV, although it suggests antibody  
375 responses also decline in the majority of infected individuals<sup>34</sup>.

376 If, as seems plausible, neutralising antibodies constitute a major protective mechanism  
377 against SARS-CoV-2 infection, then the use of serological assays that use S-based antigens and  
378 correlate best with NT<sub>50</sub> measurements would appear most appropriate for prognostication of  
379 immunity. Conversely, if other mechanisms of immunity, such as long-lived memory T-cell  
380 responses play a dominant role in protection from infection or severe disease<sup>35-38</sup>, then the optimal  
381 choice of antigen for serology assays might differ. Because detailed analyses of T-cell responses  
382 are not currently feasible in a high throughput clinical setting, future work should examine the  
383 frequency of reinfection and clinical outcomes in cohorts with detailed longitudinal analyses of  
384 serum antibodies to both N and S antigens to determine the prognostic value of such  
385 measurements.

386

### 387 **Acknowledgements**

388 We acknowledge the support and hard work of the NHS Lothian BioResource team  
389 including in particular David Harrison for his support with initiating this study; Frances Rae and  
390 Craig Marshall for their advice and Linda MacLeod for her advice and hard work. NHS Lothian  
391 laboratories and out-patients teams have also worked extremely hard to enable the provision of

392 this research study. In particular we would like to thank Joan Donnelly for her support and Susan  
393 Taylor for her dedication and hardwork.

394

#### 395 **Contributor and guarantor information**

396 Contributors: HW, SJ, TH and PDB conceived and designed the study. HW, BB, MS, ES, CR, JM,  
397 SC, EF, NG, GH, KT and SJ acquired and analysed data using the serological assay platforms. FM  
398 and JCCL performed the neutralisation assays. FM and TH did additional data analysis. HM, BB,  
399 SJ and PDB wrote the first draft of the manuscript. HM, BB, FM, TH, SJ and PB critically reviewed  
400 and revised the draft. All authors approved the final version of the manuscript for submission. HW,  
401 BB and MS contributed equally. SJ and PDB are the guarantors. The corresponding author attests  
402 that all listed authors meet authorship criteria and that no others meeting the criteria have been  
403 omitted.

404

#### 405 **Copyright statement**

406 The Corresponding Author has the right to grant on behalf of all authors and does grant on behalf  
407 of all authors, an exclusive licence on a worldwide basis to the BMJ Publishing Group Ltd to permit  
408 this article (if accepted) to be published in BMJ editions and any other BMJ PGL products and  
409 sublicences such use and exploit all subsidiary rights, as set out in our licence

410

#### 411 **Competing interest statement**

412 All authors have completed the Unified Competing Interest form (available on request from the  
413 corresponding author) and declare: no support from any organisation or financial relationships with  
414 any organisations that might have an interest in the submitted work in the previous three years, no  
415 other relationships or activities that could appear to have influenced the submitted work.

416

#### 417 **Transparency declaration**

418 Paul Bieniasz and Sara Jenks (Guarantors) affirm that the manuscript is an honest, accurate, and  
419 transparent account of the study being reported; that no important aspects of the study have been  
420 omitted; there were no discrepancies from the study as planned.

421

## 422 **Details of ethical approval**

423 Ethical approval was obtained for this study to be carried out through the NHS Lothian

424 BioResource. All recruits gave written and informed consent for serial blood sample collection.

425 The Rockefeller University IRB reviewed and approved the study.

426

## 427 **Funding**

428 This work was supported by the NHS and Grants from the National Institutes of Allergy and

429 infectious Diseases R37AI640003 (to PDB) and R01AI078788 (to TH). There were no study

430 sponsors. The funders played no role in the design, analysis or reporting of this research.

431

## 432 **Data sharing statement**

433 Raw de-identified data for serology measurements and NT<sub>50</sub> measurements is available from the

434 authors on request. we plan to disseminate the results to study participants and or patient

435 organisations

436

## 437 **Checklist**

438 A filled in checklist for appropriate study type is attached

439

440

## 441 **Supplementary table**

### 442 **Supplementary Table 1 Inter-assay and intra-assay precision for main analyser serological**

### 443 **assays**

		Intra-assay precision <sup>1</sup>			Inter-assay precision <sup>1</sup>		
		Mean	SD	CV (%)	Mean	SD	CV (%)
Roche Cobas e 801 COI	Negative	0.09	0.0025	2.91	0.09	0.006	7.54
	Positive	13.85	0.14	1.00	13.85	0.44	3.14
Abbott Architect i2000 S/C	Negative	0.03	0.001	2.94	0.03	0.002	6.57
	Positive	8.11	0.04	0.50	8.11	0.07	1.20
Siemens Atellica AU	Negative	0.05	0.0039	7.70	0.05	0.009	1.70
	Positive	2.82	0.05	1.80	2.82	0.10	3.70
DiaSorin LIASON AU/ml	Negative	6.01	0.20	3.40	6.13	0.30	4.83
	Positive	69.72	1.06	1.52	69.10	1.98	2.86



444

445 <sup>1</sup>Based on negative and positive pooled patient material. Inter-assay precision was determined using the  
446 mean of at least 5 replicates run on 3- 5 separate days for each assay.

447

448

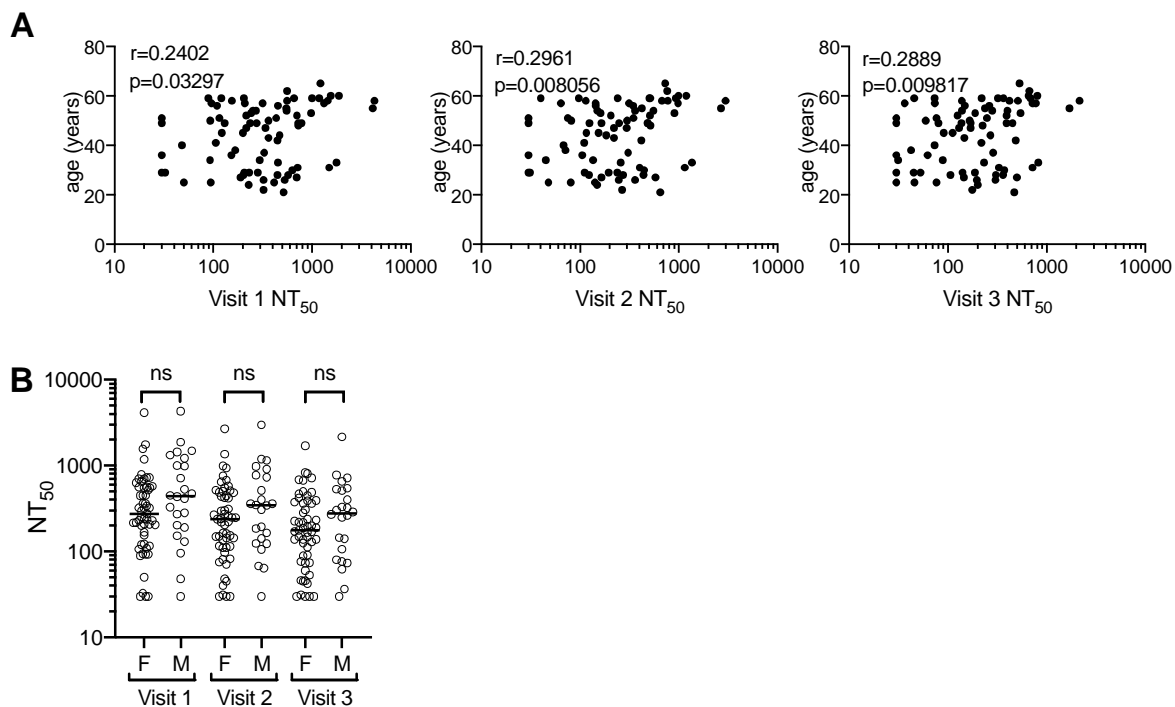
## 449 **Supplementary Figures**

450

### 451 **Supplementary fig 1.**

452 **(A)** Age (years) versus NT<sub>50</sub> measured in sera collected at each visit. Spearman r and respective  
453 p-values are indicated. **(B)** NT<sub>50</sub> in sera from male and female participants, collected at visits 1, 2  
454 and 3. Horizontal lines indicate median values. Statistical significance was assessed with the  
455 Mann-Whitney-test.

456



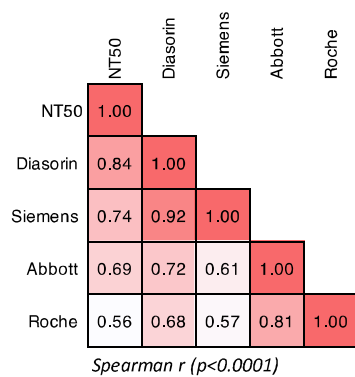
457

458

### 459 **Supplementary fig 2.**

460 **(A)** Spearman r for correlations of serological assay measurements and NT<sub>50</sub> for all samples  
461 analysed (not divided by visit).

462



463

464

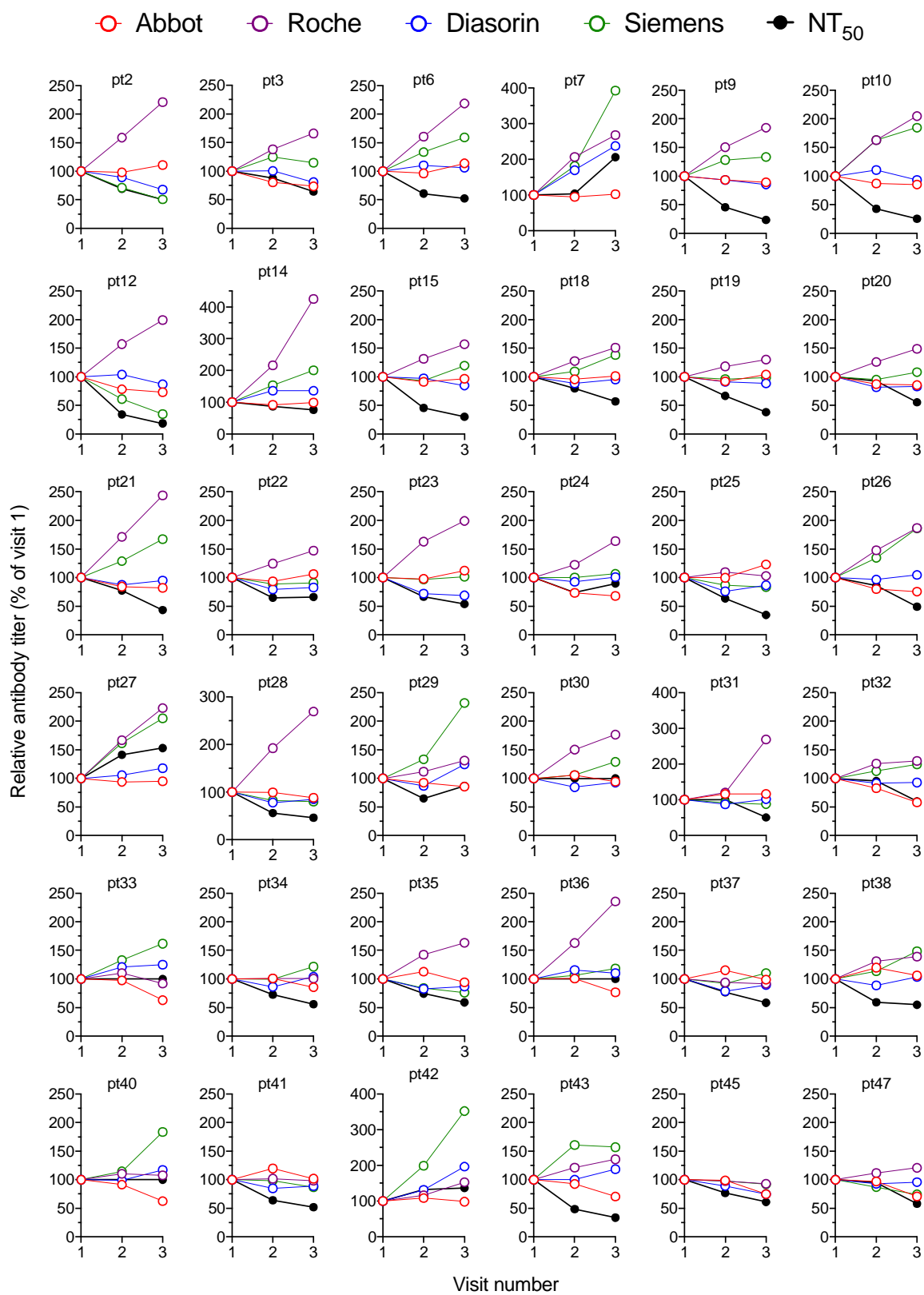
465

466

467 **Supplementary fig 3.**

468 Changes in antibody titres measured using each serology platform and using the neutralization

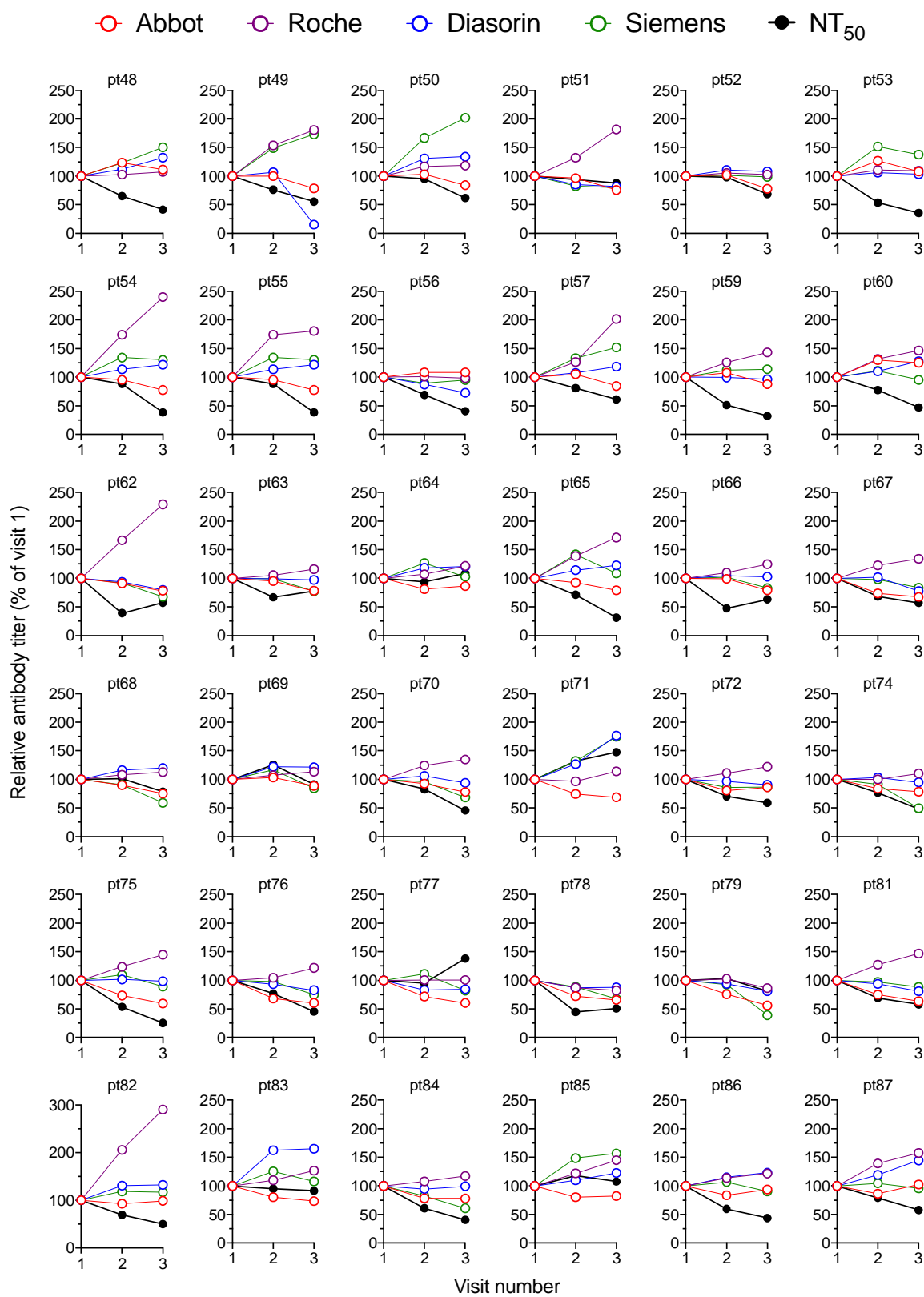
469 assay (relative to visit one which is plotted as 100%) at each visit for each individual participant.



470

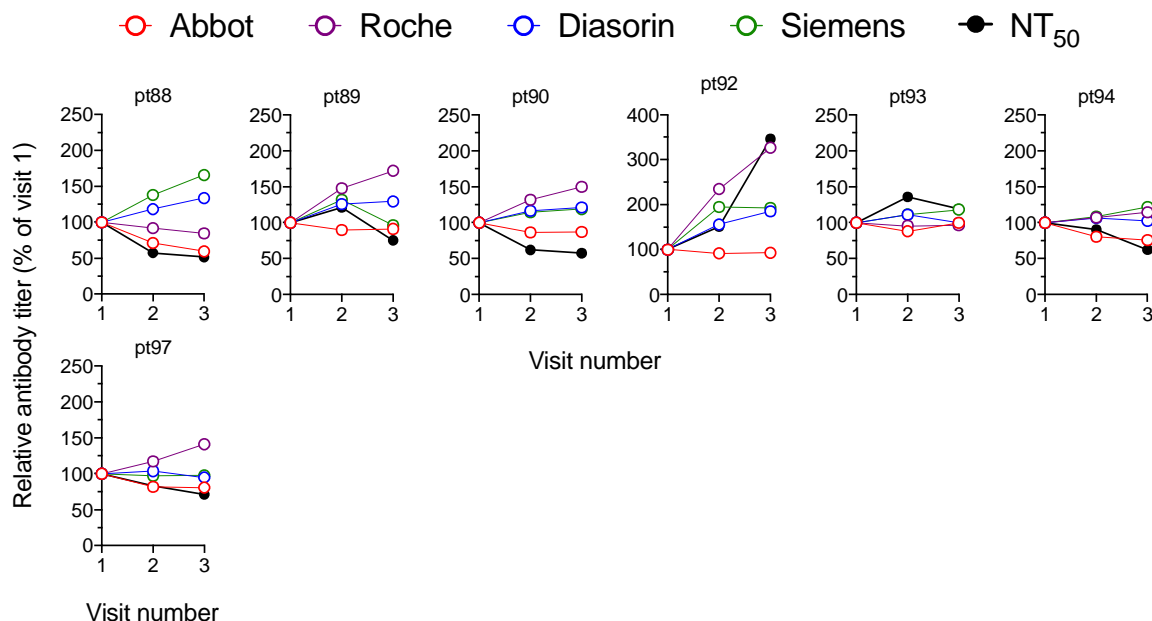
471

472



473  
474

475



476

477

478

479

480

481

## References

482

1. Andersson M, Low N, French N, et al. Rapid roll out of SARS-CoV-2 antibody testing—a concern. *BMJ* 2020;m2420. doi: 10.1136/bmj.m2420

483

484

2. Özçürümez MK, Ambrosch A, Frey O, et al. SARS-CoV-2 antibody testing—questions to be asked. *Journal of Allergy and Clinical Immunology* 2020;146(1):35-43. doi: 10.1016/j.jaci.2020.05.020

485

486

3. GeurtsvanKessel CH, Okba NMA, Igloi Z, et al. An evaluation of COVID-19 serological assays informs future diagnostics and exposure assessment. *Nature Communications* 2020;11(1):3436. doi: 10.1038/s41467-020-17317-y

487

488

489

4. Hess AS, Shardell M, Johnson JK, et al. Methods and recommendations for evaluating and reporting a new diagnostic test. *European Journal of Clinical Microbiology & Infectious Diseases* 2012;31(9):2111-16. doi: 10.1007/s10096-012-1602-1

490

491

492

5. Schmidt F, Weisblum Y, Muecksch F, et al. Measuring SARS-CoV-2 neutralizing antibody activity using pseudotyped and chimeric viruses. *Journal of Experimental Medicine* 2020;217(11):e20201181. doi: 10.1084/jem.20201181

493

494

495

6. Luchsinger LL, Ransegnola B, Jin D, et al. Serological Analysis of New York City COVID19 Convalescent Plasma Donors: Infectious Diseases (except HIV/AIDS), 2020.

496

497

7. Robbiani DF, Gaebler C, Muecksch F, et al. Convergent antibody responses to SARS-CoV-2 in convalescent individuals. *Nature* 2020 doi: 10.1038/s41586-020-2456-9

498

499

8. Wajnberg A, Mansour M, Leven E, et al. Humoral immune response and prolonged PCR positivity in a cohort of 1343 SARS-CoV 2 patients in the New York City region: Infectious Diseases (except HIV/AIDS), 2020.

500

501

9. Group TNS-C-SAEGTNS-C-SAE. Head-to-head benchmark evaluation of the sensitivity and specificity of five immunoassays for SARS-CoV-2 serology on >1500 samples. 2020 doi: 10.6084/M9.FIGSHARE.C.5046032.V1

502

503

10. Jääskeläinen A, Kuivanen S, Kekäläinen E, et al. Performance of six SARS-CoV-2 immunoassays in comparison with microneutralisation. *Journal of Clinical Virology* 2020;129:104512. doi: 10.1016/j.jcv.2020.104512

504

505

11. Cervia C, Nilsson J, Zurbuchen Y, et al. Systemic and mucosal antibody secretion specific to SARS-CoV-2 during mild versus severe COVID-19: Immunology, 2020.

506

507

12. Dogan M, Kozhaya L, Placek L, et al. Novel SARS-CoV-2 specific antibody and neutralization assays reveal wide range of humoral immune response during COVID-19: Allergy and Immunology, 2020.

508

509

13. Klein S, Pekosz A, Park H-S, et al. Sex, age, and hospitalization drive antibody responses in a COVID-19 convalescent plasma donor population: Infectious Diseases (except HIV/AIDS), 2020.

510

511

14. Long Q-X, Liu B-Z, Deng H-J, et al. Antibody responses to SARS-CoV-2 in patients with COVID-19. *Nature Medicine* 2020 doi: 10.1038/s41591-020-0897-1

512

513

- 514 15. Rijkers G, Murk J-L, Wintermans B, et al. Differences in antibody kinetics and functionality between severe and  
515 mild SARS-CoV-2 infections.: *Infectious Diseases (except HIV/AIDS)*, 2020.
- 516 16. Perkmann T, Perkmann-Nagele N, Breyer M-K, et al. Side by side comparison of three fully automated SARS-  
517 CoV-2 antibody assays with a focus on specificity: *Infectious Diseases (except HIV/AIDS)*, 2020.
- 518 17. Bryan A, Pepper G, Wener MH, et al. Performance Characteristics of the Abbott Architect SARS-CoV-2 IgG Assay  
519 and Seroprevalence in Boise, Idaho. *J Clin Microbiol* 2020;58(8) doi: 10.1128/jcm.00941-20 [published  
520 Online First: 2020/05/10]
- 521 18. Lou B, Li T-D, Zheng S-F, et al. Serology characteristics of SARS-CoV-2 infection since exposure and post  
522 symptom onset. *European Respiratory Journal* 2020:2000763. doi: 10.1183/13993003.00763-2020
- 523 19. Pickering S, Betancor G, Pedro Galao R, et al. Comparative assessment of multiple COVID-19 serological  
524 technologies supports continued evaluation of point-of-care lateral flow assays in hospital and community  
525 healthcare settings: *Infectious Diseases (except HIV/AIDS)*, 2020.
- 526 20. Staines HM, Kirwan DE, Clark DJ, et al. Dynamics of IgG seroconversion and pathophysiology of COVID-19  
527 infections: *Infectious Diseases (except HIV/AIDS)*, 2020.
- 528 21. Grandjean L, Saso A, Ortiz A, et al. Humoral Response Dynamics Following Infection with SARS-CoV-2. *medRxiv*  
529 2020
- 530 22. Perreault J, Tremblay T, Fournier M-J, et al. Longitudinal analysis of the humoral response to SARS-CoV-2 spike  
531 RBD in convalescent plasma donors: *Immunology*, 2020.
- 532 23. Ibarondo FJ, Fulcher JA, Goodman-Meza D, et al. Rapid Decay of Anti-SARS-CoV-2 Antibodies in Persons with  
533 Mild COVID-19. *New England Journal of Medicine* 2020:NEJMc2025179. doi: 10.1056/NEJMc2025179
- 534 24. Seow J, Graham C, Merrick B, et al. Longitudinal evaluation and decline of antibody responses in SARS-CoV-2  
535 infection: *Infectious Diseases (except HIV/AIDS)*, 2020.
- 536 25. Juno JA, Tan H-X, Lee WS, et al. Humoral and circulating follicular helper T cell responses in recovered patients  
537 with COVID-19. *Nature Medicine* 2020 doi: 10.1038/s41591-020-0995-0
- 538 26. Weisblum Y, Schmidt F, Zhang F, et al. Escape from neutralizing antibodies by SARS-CoV-2 spike protein  
539 variants: *Microbiology*, 2020.
- 540 27. Barnes CO, West AP, Huey-Tubman KE, et al. Structures of human antibodies bound to SARS-CoV-2 spike reveal  
541 common epitopes and recurrent features of antibodies. *Cell* 2020:S0092867420307571. doi:  
542 10.1016/j.cell.2020.06.025
- 543 28. Wajnberg A, Amanat F, Firpo A, et al. SARS-CoV-2 infection induces robust, neutralizing antibody responses that  
544 are stable for at least three months: *Infectious Diseases (except HIV/AIDS)*, 2020.
- 545 29. Macnaughton MR. Occurrence and frequency of coronavirus infections in humans as determined by enzyme-linked  
546 immunosorbent assay. *Infection and Immunity* 1982;38(2):419-23. doi: 10.1128/IAI.38.2.419-423.1982
- 547 30. Dijkman R, Jebbink MF, Gaunt E, et al. The dominance of human coronavirus OC43 and NL63 infections in  
548 infants. *Journal of Clinical Virology* 2012;53(2):135-39. doi: 10.1016/j.jcv.2011.11.011
- 549 31. Callow KA. Effect of specific humoral immunity and some non-specific factors on resistance of volunteers to  
550 respiratory coronavirus infection. *The Journal of Hygiene* 1985;95(1):173-89. doi:  
551 10.1017/s0022172400062410
- 552 32. Callow KA, Parry HF, Sergeant M, et al. The time course of the immune response to experimental coronavirus  
553 infection of man. *Epidemiology and Infection* 1990;105(2):435-46. doi: 10.1017/S0950268800048019
- 554 33. Edridge AW, Kaczorowska JM, Hoste AC, et al. Coronavirus protective immunity is short-lasting: *Infectious*  
555 *Diseases (except HIV/AIDS)*, 2020.
- 556 34. Kellam P, Barclay W. The dynamics of humoral immune responses following SARS-CoV-2 infection and the  
557 potential for reinfection. *Journal of General Virology* 2020 doi: 10.1099/jgv.0.001439
- 558 35. Gallais F, Velay A, Wendling M-J, et al. Intrafamilial Exposure to SARS-CoV-2 Induces Cellular Immune  
559 Response without Seroconversion: *Infectious Diseases (except HIV/AIDS)*, 2020.
- 560 36. Grifoni A, Weiskopf D, Ramirez SI, et al. Targets of T cell responses to SARS-CoV-2 coronavirus in humans with  
561 COVID-19 disease and unexposed individuals. *Cell* 2020:S0092867420306103. doi:  
562 10.1016/j.cell.2020.05.015
- 563 37. Le Bert N, Tan AT, Kunasegaran K, et al. SARS-CoV-2-specific T cell immunity in cases of COVID-19 and SARS,  
564 and uninfected controls. *Nature* 2020 doi: 10.1038/s41586-020-2550-z
- 565 38. Sekine T, Perez-Potti A, Rivera-Ballesteros O, et al. Robust T cell immunity in convalescent individuals with  
566 asymptomatic or mild COVID-19: *Immunology*, 2020.
- 567