

An image based approach for predicting the effects of endocrine disrupting chemicals on human health using deep learning

Pantelis Karatzas

School of Chemical Engineering, National Technical University of Athens, Athens. Greece

Yiannis Kiouvrekis

University of Nicosia, Nicosia, Cyprus

University of Thessaly, Greece

Petros Stefaneas

Department of Mathematics, National Technical University of Athens, Athens. Greece

Haralambos Sarimveis

School of Chemical Engineering, National Technical University of Athens, Athens. Greece

Yiannis Kiouvrekis^{1,}*

Abstract

In recent years, deep neural networks, especially those exhibiting synergistic properties, have been at the cutting edge of image processing, producing very good results. So far, they have been able to successfully address issues of classification and recognition of objects depicted on images. In this paper, a novel idea is presented, where images of chemical structures are used as input information in deep learning neural network architectures aiming at the generation of Quantitative Structure Activity Relationship (QSAR) models, i.e. models that predict properties, activities or adverse effects of chemicals. The proposed method was applied to a case study of particular interest, which is the predic-

*Corresponding author

Email addresses: pantelispanka@gmail.com (Pantelis Karatzas), petrosstefaneas@gmail.com (Petros Stefaneas), hsarimv@central.ntua.gr (Haralambos Sarimveis), yiannis.kiouvrekis@gmail.com (Yiannis Kiouvrekis), kiouvrekis.y@uth.gr (Yiannis Kiouvrekis)

Preprint submitted to Machine Learning with Applications

August 15, 2020

tion of endocrine disrupting potential of chemicals. Two different deep learning architectures were applied. The produced ImageNet model proved successful, in terms of accuracy, performance and robustness on training and validation sets. The new approach is proposed to the community as an alternative or complementary method to current practices in QSAR modelling, which can automate and improve the creation of predictive models.

Keywords: deep learning, QSAR modelling, endocrine disruption, machine learning, predictive modelling

1. Introduction

Recent years have seen considerable developments in the fields of machine learning and neural networks in particular (Abiodun et al., 2018). New deep learning architectures and methodologies allow for the use of big data, such as sound and images, for developing models, taking decisions and drawing conclusions. Deep neural networks technologies enable us to successfully address issues such as recognition, image categorization and recognition of objects depicted – in certain instances more efficiently than a human agent could (Voulodimos et al., 2018; Wang et al., 2020). Increased access to data combined with improved computing power have enabled researchers and programmers to find new applications for neural networks at a very rapid rate (Amodei et al.). Very recently, deep learning methodologies have been used successfully in various problems in life sciences like drug discovery and microscopic and medical scan analysis (Ramsundar et al., 2019).

Chemometrics is the science of extracting information from chemical systems by data driven methodologies. Machine learning methods have been employed extensively in this particular field, with neural networks playing a dominating role (Marini et al., 2008). Various attempts have been made at devising systems that can depict chemical structures (Guha & Willighagen, 2012); ‘SMILES’ is one of these systems of depiction which is commonly accepted (G & KH., 2018). The Simplified Molecular-Input Line-Entry System (SMILES) is a standard no-

tation which takes the form of a linear string describing chemical structures using short ASCII strings. These descriptions are vital to modern chemical information systems, but they do not necessarily allow computational techniques to be directly applied to them. Specific software, like the Chemistry Development Kit (CDK) (Steinbeck et al., 2003) has been developed to calculate quantitative descriptors that can form standard training data sets for training machine learning models for predicting activities of molecules, known as Quantitative Structure Activity Relationship Models (QSAR) models.

Deep learning methodologies have not yet been used extensively in the field of chemometrics and many applications focus on the analysis of spectroscopic data (Chatzidakis & Botton, 2019). Deep learning has also been used as an alternative to other machine learning methodologies using standard descriptors of chemicals (Simmons et al., 2008). In this paper we present a novel idea for the application of deep learning in the field of chemometrics, which is based on the structural representation of chemical compounds as images and use of only these images as input information in the training process. Many molecular processors can automatically transform SMILES strings into 2D depictions or 3D image representations (Weininger et al., 1989; Weininger, 1988). The method is demonstrated on a specific case study, which is the prediction of Relative Binding Affinity (RBA) of potential endocrine disrupting chemicals. The results are very promising, taking into account that the only input information to the produced deep learning models is the image representations of the molecule and there is no need for descriptor calculation and variable selection, which are time consuming preprocessing steps, often involving a trial and error computational process.

2. Materials and methods

The endocrine system plays a central role in regulating metabolism, development, reproduction and behavior in all vertebrates. The hypothesis advanced concerning the presence of endocrine disruptors (Colborn et al., 1993) has led

to new studies expressing concerns about the effects of endocrine disruption on health and the environment (Myers et al., 2004). Studies incorporate findings and methodologies from different fields, including toxicology, endocrinology, developmental biology, molecular biology, ecology, behavioral biology and epidemiology (Myers et al., 2004). An endocrine disruptor is defined as “an exogenous chemical substance or mixture that alters the structure or function(s) of the endocrine system and causes adverse effects at the level of the organism, its progeny, populations, or subpopulations of organisms, based on scientific principles, data, weight-of-evidence, and the precautionary principle” (Zoeller et al., 2012). Data collected from ecological studies, animal models, clinical observation of human subjects and epidemiological studies indicate that endocrine disrupting chemicals pose a significant risk to wild life and human health (Street et al., 2018). It is therefore of particular importance to develop a data driven model that predicts the endocrine disrupting potential of chemical compounds, which is the objective of this study.

The data set consists of 1,459 chemical structures. Based on experimental data, they have been labeled with values concerning their Relative Binding Affinity on a logarithmized scale (logRBA). The data were gathered from the EADB dataset (Estrogenic Activity Database) (Shen et al., 2013a; Ng et al., 2014; Shen et al., 2013b). The data subset used involves only the endpoints for species (human) and for logRBA. Images of the chemicals were generated using the chemistry development kit (CDK) (Willighagen et al., 2017) and the indigo open source software (Indigo, 2020). An example is given in Fig. 1 which shows the images generated for estradiol with SMILES

C[C@]12CC[C@H]3[C@@H](CCc4cc(O)ccc34)[C@@H]1CC[C@@H]2O

and formula "C18H24O2" by the two software platforms. The reason for generating images from two software sources was data set augmentation, since the starting dataset is relatively small for deep neural network training. However, this did not improve neural network learning but, on the contrary, it prevented convergence. The model presented in the results sections used only the CDK generated images. In order to proceed with the development of the models, we

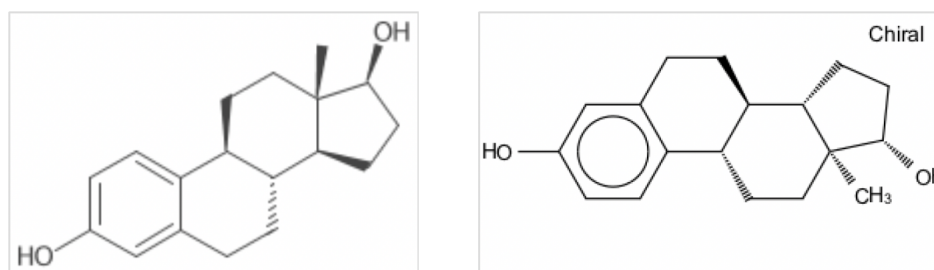


Figure 1: Two smiles images generated using two different software. Left: CDK produced SMILE image; Right: Indigo produced SMILES image.

classified the chemical structures into 3 classes according to their experimental response. The first class comprises structures which have response values in the $[-3.328, -0.26]$ range, the second class comprises response values in the $[-0.259, 0.824]$ range and the third comprises values in the $[0.826, 2.857]$ range. The classes have been encoded as a One hot vector.

The deep learning architecture employed for developing the models was AlexNet. AlexNet comprises eight layers; five of these are convolutional layers, some of which are followed by max pooling layers, and three are fully connected layers (Alom et al., 2019). AlexNet is quite similar to the older LeNet-5 architecture with two important differences: AlexNet contains more layers and employs the ReLU (Rectified Linear Unit) activation function that improves the training performance compared to the tanh or sigmoid activation functions used by LeNet-5. For the creation and the training of the models we used Tensorflow. The models have been trained on a pc with linux, an i3 cpu 16 gb of RAM and an nvidia GeForce 1070 gnu with 8 GB of RAM capable of running and training neural networks.

3. Results and discussion

The images were resized and pasted into white background so as to fit into squares as the input to a neural network. The dimensions used in modelling are $128 * 128$, $200 * 200$ and $256 * 256$. 128 and 256 sized pictures favour the

pooling layers of a deep neural network that can downsample the images to 8 * 8 sized convolutional kernels, or even 4*4. This way we can add many layers on the neural network if necessary. It should be noted that images have been
105 normalized. Their pixel values were scaled so as to have a mean value of 0 and a standard Deviation of 1.

In order to proceed with training, the data set was split into random batches according to training needs. The memory capacity of the equipment available to the user plays a crucial role. In our case we conducted random sampling from
110 batches of 42 images each. The batches were fed into the neural network to proceed with the training procedure. We proceeded employing two architectures of neural networks, namely the AlexNet type, as previously described, and in the second instance we used neural networks with Residual blocks.

The AlexNet network was constructed as follows: Three convolutional layers
115 were used after the network input layer. Each convolutional layer was followed by a 2 * 2 pooling layer created by downsampling of the network input. Therefore, depending on the input, the final convolutional layer contained 16 * 16 filters times the filter depth for 128*128 sized images, 25 * 25 times the filter depth for 200*200 sized images and, in the case of 256 *256 sized images, 32 *
120 32 times the filter depth. The two final fully connected network layers consisted of 1024 nodes. The network output layer contained the three classes we need to predict. The activation function employed was ReLU, $f(x) = \max(0, x)$ as mentioned before.

We used two optimization functions, the classic Gradient Descent method
125 and AdamOptimizer. The learning rate value was fixed to a relatively high value of 0.3, whereas typical learning rate values are in the range of 0.01 - 0.001. Lower values of learning rates resulted to slower convergence and smaller accuracy on the training data. On every network layer we used the dropout method to avoid over fitting the model. The input image size was not significant, since
130 the accuracy of the model was affected by 1% at most, without exhibiting any patterns. The training accuracy graphs are presented below. The first graph (Figure 2) shows the evolution of accuracy during training. As anticipated, from



Figure 2: Evolution of accuracy on the training data for the AlexNet classification deep learning model.

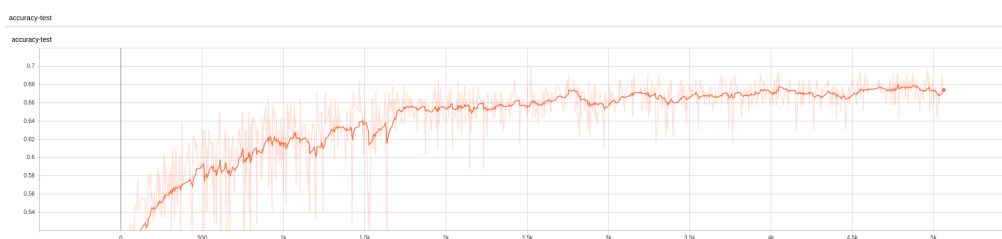


Figure 3: Evolution of accuracy on the test data for the AlexNet classification deep learning model.

a certain step and on wards (i.e. after step 5000) accuracy approaches 1:

Figure 3 is the corresponding accuracy graph for the validation data, where
135 accuracy reaches a limit of 67%. Standard metrics in the field of machine learning were used for evaluating further the performance of the models. In particular, the confusion matrix also known as an “error matrix” (Weininger, 1988), refers to a certain matrix configuration which allows for visualizing the algorithm performance, typically in cases of supervised learning in classification models.
140 Each row in the matrix represents occurrences in a predicted class, while each column represents occurrences in an actual class (or vice versa) (Voulodimos et al., 2018). It is named after the fact that it facilitates determining whether the system causes confusion in the various classes. The confusion matrix for the validation data set is shown in Table 1.

145 Matthews Correlation Coefficient (MCC), introduced by biochemist Brian W. Matthews in 1975, is used in machine learning to measure the quality of binary classifications (two categories). The coefficient takes into account both

n=146	Number of images	Predicted class 0	Predicted class 1	Predicted class 2
Actual class 0	53	34 (64%)	13	6
Actual class 1	39	6	26 (66%)	7
Actual class 2	54	4	12	38 (70%)

Table 1: Confusion Matrix (absolute numbers and % accuracy on test images available in each class)

true and false positives and negatives and is generally considered as a balanced measure which can be employed even if the classes differ greatly in size. In essence, MCC is a correlation coefficient applied to observed and predicted binary classifications. It yields a value between -1 and 1. A coefficient of 1 represents a perfect prediction, 0 is better than a random prediction and -1 indicates complete disagreement between prediction and observation. The Matthews correlation coefficient has been generalized to the multi class problem, which is the case (Gorodkin, 2004) in our classification problem. Our value for the model's predictions is $MCC = 0.51$.

For comparison purposes, we employed Residual nets as an alternative neural networks architecture, which has produced very good results in a number of modelling cases. Residual networks manages to go deeper than other networks with the utilisation of skip connections. This way they avoid the problem of the vanishing gradient by adding the activations of previous layers (He et al., 2016). They solve problem of CIFAR 10 (Krizhevsky, 2020) data set with an error rate of 4% (Angelov et al., 2016) and has good generalization performance for the data sets of PASCAL VOC 2007 and 2012 (Everingham et al., 2009) and COCO (Lin et al., 2014). We tried various levels in the network. The models created had either 10 or 15 residual blocks with 2 or 3 strides respectively followed by a fully connected layer with the outputs of the model. Again we used The Adam Optimizer with the value of 0.3. In Figures 4 and 5 the evolution of accuracy on the training and test sets is presented for a residual network of 10 residual blocks with a stride of 2 and a learning rate with the value of 0.3. The number of the parameters of the network proved computationally expensive. For the 8000

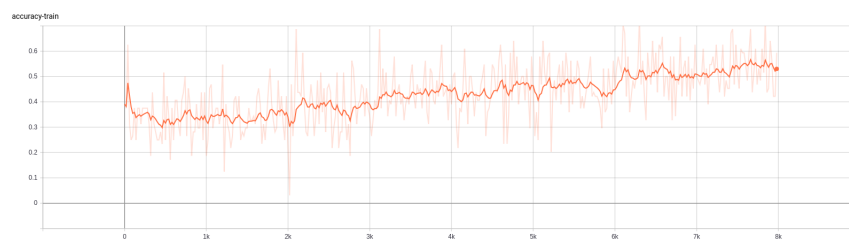


Figure 4: Evolution of accuracy on the training data for the Residual Net classification deep learning model.



Figure 5: Evolution of accuracy on the test data for the Residual Net classification deep learning model.

training steps we needed around 8 hours and thus we did not further proceed the training of the model.

We observe that the training procedure was not completed after 8000 itera-
175 tions, which took more than 6 hours of computational time and the accuracy did not reach the level that was achieved using the AlexNet architecture. Therefore the AlexNet deep learning model was selected as the final classification model.

4. Conclusions

In this paper we demonstrated that 2D images of chemical structures could
180 be the sole input information used in QSAR modelling, where deep learning architectures are employed. We investigated on the most adequate architecture that is capable of producing a reasonably accurate model. The accuracy and robustness of the model were evaluated on samples that were not used during the training procedure. The statistical metrics indicate that the proposed approach

185 is very promising. It is of particular importance the fact that the proposed
method does not require the calculation and selection of the most important
molecular descriptors, which is the usual practice in QSAR modelling. Future
research will focus on the use of 3D images, which will give additional details on
the structures of chemicals. We will also investigate if combinations of images
190 with standard calculated descriptors may further improve the results. Appli-
cations of the method on additional and possibly bigger data sets will further
evaluate its performance, accuracy and robustness.

References

- Abiodun, O. I., Jantan, A., Omolara, A. E., Dada, K. V., Mohamed,
195 N. A., & Arshad, H. (2018). State-of-the-art in artificial neural
network applications: A survey. *Heliyon*, *4*, 888–896. URL: <http://www.sciencedirect.com/science/article/pii/S2405844018332067>.
doi:<https://doi.org/10.1016/j.heliyon.2018.e00938>.
- Alom, M. Z., Taha, T. M., Yakopcic, C., Westberg, S., Sidike, P., Nasrin, M. S.,
200 Hasan, M., Van Essen, B. C., Awwal, A. A. S., & Asari, V. K. (2019). A
state-of-the-art survey on deep learning theory and architectures. *Electronics*,
8, 292. URL: <http://dx.doi.org/10.3390/electronics8030292>. doi:10.
3390/electronics8030292.
- Amodei, D., Hernandez, D., SastryJack, G., Brockman, C., & Sutskever, I. ().
205 Ai and compute. URL: <https://openai.com/blog/ai-and-compute/>.
- Angelov, P., Shen, Q., Jayne, C., & Gegov, A. (2016). *Advances in Computa-
tional Intelligence Systems: Contributions Presented at the 16th UK Work-
shop on Computational Intelligence, September 7–9, 2016, Lancaster, UK*
volume 513 of *Advances in Intelligent Systems and Computing*. Springer.
210 doi:10.1007/978-3-319-46562-3.
- Chatzidakis, M., & Botton, G. A. (2019). Towards calibration-invariant spec-

- troscopy using deep learning. *Scientific Reports*, 9, 2126. URL: <https://doi.org/10.1038/s41598-019-38482-1>. doi:10.1038/s41598-019-38482-1.
- Colborn, T., vom Saal, F. S., & Soto, A. M. (1993). Developmental effects of
215 endocrine-disrupting chemicals in wildlife and humans. *Environmental health perspectives*, 101, 378–384.
- Everingham, M., Gool, L., Williams, C. K., Winn, J., & Zisserman, A. (2009). The pascal visual object classes (voc) challenge. *International Journal of Computer Vision*, 88, 303–338.
- 220 G, H., & KH., B. (2018). Artificial intelligence in drug design. *Molecules*, 23. doi:10.3390/molecules23102520.
- Gorodkin, J. (2004). Comparing two k-category assignments by a k-category correlation coefficient. *Computational Biology and Chemistry*, 28, 367–374. doi:10.1016/j.compbiolchem.2004.09.006.
- 225 Guha, R., & Willighagen, E. (2012). A survey of quantitative descriptions of molecular structure. *Current topics in medicinal chemistry*, 12, 1946–1956. URL: <https://europepmc.org/articles/PMC3809149>. doi:10.2174/156802612804910278.
- He, K., Zhang, X., Ren, S., & Sun, J. (2016). Deep residual learning for image recognition. In *2016 IEEE Conference on Computer Vision and Pattern Recognition (CVPR)* (pp. 770–778).
230
- Indigo (2020). Indigo toolkit. URL: <https://lifescience.opensource.epam.com/indigo/index.html> (accessed: 14.08.2020).
- Krizhevsky, A. (2020). The cifar-10 dataset. URL: <https://www.cs.toronto.edu/~kriz/cifar.html> (accessed: 14.08.2020).
235
- Lin, T.-Y., Maire, M., Belongie, S., Hays, J., Perona, P., Ramanan, D., Dollár, P., & Zitnick, C. L. (2014). Microsoft coco: Common objects in context. In

- D. Fleet, T. Pajdla, B. Schiele, & T. Tuytelaars (Eds.), *Computer Vision – ECCV 2014* (pp. 740–755). Cham: Springer International Publishing.
- 240 Marini, F., Bucci, R., Magrì, A., & Magrì, A. (2008). Artificial neural networks in chemometrics: History, examples and perspectives. *Microchemical Journal*, 88, 178–185. doi:10.1016/j.microc.2007.11.008.
- Myers, J., Guillette, J., L.J., Palanza, P., Parmigiani, S., Swan, S., & vom Saal, F. (2004). The emerging science of endocrine disruption. *In International Seminars on Planetary Emergencies, 30th Session, 19*, 105–121.
- 245 Ng, H. W., Perkins, R., Tong, W., & Hong, H. (2014). Versatility or promiscuity: the estrogen receptors, control of ligand selectivity and an update on subtype selective ligands. *International journal of environmental research and public health*, 11, 8709–8742.
- 250 Ramsundar, B., Eastman, P., Walters, P., & Pande, V. (2019). *Deep Learning for the Life Sciences*. O’Reilly Media.
- Shen, J., Xu, L., Fang, H., Richard, A. M., Bray, J. D., Judson, R. S., Zhou, G., Colatsky, T. J., Aungst, J. L., Teng, C., Harris, S. C., Ge, W., Dai, S. Y., Su, Z., Jacobs, A. C., Harrouk, W., Perkins, R., Tong, W., & Hong, H. (2013a).
- 255 Eadb: An estrogenic activity database for assessing potential endocrine activity. *Toxicological Sciences*, 135, 277–291. doi:10.1093/toxsci/kft164.
- Shen, J., Xu, L., Fang, H., Richard, A. M., Bray, J. D., Judson, R. S., Zhou, G., Colatsky, T. J., Aungst, J. L., Teng, C., Harris, S. C., Ge, W., Dai, S. Y., Su, Z., Jacobs, A. C., Harrouk, W., Perkins, R., Tong, W., &
- 260 Hong, H. (2013b). EADB: An Estrogenic Activity Database for Assessing Potential Endocrine Activity. *Toxicological Sciences*, 135, 277–291. URL: <https://doi.org/10.1093/toxsci/kft164>. doi:10.1093/toxsci/kft164. arXiv:<https://academic.oup.com/toxsci/article-pdf/135/2/277/16687125/kft164.pdf>.
- Simmons, K., Kinney, J., Owens, A., Kleier, D., Bloch, K., Argentar, D., Walsh, A., & Vaidyanathan, G. (2008). Comparative study of machine-learning and
- 265

chemometric tools for analysis of in-vivo high-throughput screening data.
Journal of Chemical Information and Modeling, 48, 1663–1668.

270 Steinbeck, C., Han, Y., Kuhn, S., Horlacher, O., Luttmann, E., & Willighagen, E. (2003). The chemistry development kit (cdk): An open-source java library for chemo- and bioinformatics. *Journal of Chemical Information and Computer Sciences*, 43, 493–500. URL: <https://doi.org/10.1021/ci025584y>. doi:10.1021/ci025584y.

275 Street, M. E., Angelini, S., Bernasconi, S., Burgio, E., Cassio, A., Catellani, C., Cirillo, F., Deodati, A., Fabbrizi, E., Fanos, V., Gargano, G., Grossi, E., Iughetti, L., Lazzeroni, P., Mantovani, A., Migliore, L., Palanza, P., Panzica, G., Papini, A. M., Parmigiani, S., Predieri, B., Sartori, C., Tridenti, G., & Amarri, S. (2018). Current knowledge on endocrine disrupting chemicals (edcs) from animal biology to humans, from pregnancy to adulthood: Highlights from a national italian meeting. *International Journal of Molecular Sciences*, 19. doi:10.3390/ijms19061647.

280 Voulodimos, A., Doulamis, N., Doulamis, A., & Protopapadakis, E. (2018). Deep learning for computer vision: A brief review. *Computational Intelligence and Neuroscience*, 2018, 1–13. doi:10.1155/2018/7068349.

285 Wang, X., Zhao, Y., & Pourpanah, F. (2020). Recent advances in deep learning. *International Journal of Machine Learning and Cybernetics*, 11, 747–750. URL: <https://doi.org/10.1007/s13042-020-01096-5>. doi:10.1007/s13042-020-01096-5.

Weininger, D. (1988). Smiles, a chemical language and information system. 1. introduction to methodology and encoding rules. *Journal of Chemical Information and Computer Science*, 28, 31–36.

290 Weininger, D., Weininger, A., & Weininger, J. (1989). Smiles. 2. algorithm for generation of unique smiles notation. *J. Chem. Inf. Comput. Sci.*, 29, 97–101.

Willighagen, E. L., Mayfield, J. W., Alvarsson, J., Berg, A., Carlsson, L., Jeli-
azkova, N., Kuhn, S., Pluskal, T., Rojas-Chertó, M., Spjuth, O., Torrance, G.,
295 Evelo, C. T., Guha, R., & Steinbeck, C. (2017). The chemistry development
kit (cdk) v2.0: atom typing, depiction, molecular formulas, and substructure
searching. *Journal of Cheminformatics*, 9, 33.

Zoeller, R. T., Brown, T. R., Doan, L. L., Gore, A. C., Skakkebaek, N. E., Soto,
A. M., Woodruff, T. J., & Vom Saal, F. S. (2012). Endocrine-Disrupting
300 Chemicals and Public Health Protection: A Statement of Principles from The
Endocrine Society. *Endocrinology*, 153, 4097–4110. URL: <https://doi.org/10.1210/en.2012-1422>. doi:10.1210/en.2012-1422.