

1
2 **Viral cultures for COVID-19 infectivity assessment – a systematic review**

3
4 Jefferson T¹; Spencer EA¹; Brassey J²; Heneghan C¹.

5
6 **Affiliations**

- 7 1. Nuffield Department of Primary Care Health Sciences, University of Oxford, Radcliffe Observatory
8 Quarter, Oxford, OX2 6GG
9 2. Trip Database Ltd

10
11
12 **Keywords:** Covid-19; mode of transmission, viral culture; symptom onset to test date; polymerase chain
13 reaction; SARS-CoV-2; infectivity.

14
15 Joint corresponding authors:

16 Jefferson (tom-jefferson@conted.ox.ac.uk)

17 Heneghan (Carl.heneghan@phc.ox.ac.uk)

18
19 **Summary**

20 **Objective** to review of the evidence from studies comparing SARS-CoV-2 culture, the best indicator of
21 current infection and infectiousness with the results of reverse transcriptase polymerase chain reaction (RT-
22 PCR).

23 **Methods** We searched LitCovid, medRxiv, Google Scholar and Google for Covid-19 for 'viral culture' or 'viral
24 replication' and associated synonyms up to 18th August 2020. We carried out citation matching and included
25 studies reporting attempts to culture or observe SARS-CoV-2 matching the with cutoffs for RT-PCR
26 positivity. One reviewer extracted data for each study and a second review checked and edited the
27 extraction and summarised the narratively by sample: fecal, respiratory, environment or mixed.

28 Where necessary we wrote to corresponding authors of the included or background papers for additional
29 information. We assessed quality using a modified QUADAS 2 risk of bias tool.

30 This review is part of an [Open Evidence Review](#) on Transmission Dynamics of COVID-19. Summaries of the
31 included studies and the protocol (v1) are available at: [https://www.cebm.net/evidence-
32 synthesis/transmission-dynamics-of-covid-19/](https://www.cebm.net/evidence-synthesis/transmission-dynamics-of-covid-19/). Searches are updated every 2 weeks.

33
34 **Results** We included 17 studies reporting culturing or observing tissue invasion by SARS-CoV in sputum,
35 naso or oropharyngeal, urine, stool and environmental samples from patients diagnosed with Covid-19.
36 The data are suggestive of a relation between the time from collection of a specimen to test, cycle threshold
37 (as a proxy for viral load) and symptom severity. The quality of the studies was moderate with lack of
38 standardised reporting and lack of testing of PCR against viral culture or infectivity in animals limiting our
39 current ability to quantify the relationship between the variables and ultimately the usefulness of PCR use for

Viral cultures for COVID-19 infectivity assessment – a systematic review
In: Analysis of the Transmission Dynamics of COVID-19: An Open Evidence Review

40 assessing infectiousness of patients. Infectivity appears to decline after about a week of viral shedding around
41 the cycle threshold value of 24.

42

43 **Conclusion**

44 Prospective routine testing of reference and culture specimens are necessary for each country involved in
45 the pandemic to establish the usefulness and reliability of PCR for Covid-19 and its relation to patients'
46 factors such as date of onset of symptoms and copy threshold, in order to help predict infectivity.

47

48 **Introduction**

49 The ability to make decisions on the prevention and management of COVID-19 infections rests on our
50 capacity to identify those who are infected and infectious. In the absence of predictive clinical signs or
51 symptoms¹, the most widely used means of detection is molecular testing using Reverse Transcriptase
52 quantitative Polymerase Chain Reaction (RT-qPCR)^{2,3}.

53 The test amplifies genomic sequences identified in samples. As it is capable of generating observable
54 signals from small samples, it is very sensitive. Amplification of genomic sequence is measured in cycle
55 thresholds (Ct). There appears to be a correlation between Ct values from respiratory samples, symptom
56 onset to test (STT) date and positive viral culture. The lower the Ct value (as a proxy for total viral load) and
57 the shorter the STT, the higher the infectivity potential⁴.

58 Whether probing for sequences or whole genomes⁵, in the diagnosis of Covid-19 a positive RT-qPCR cannot
59 tell you whether the person is infectious or when the infection began, nor the provenance of the genetic
60 material. Very early in the COVID-19 outbreak it was recognised that cycle threshold values are a proxy for
61 quantitative measure of viral load, but correlation with clinical progress and transmissibility was not yet
62 known⁶. A positive result indicates that a person has come into contact with the genomic sequence or some
63 other viral antigen at some time in the past. However, presence of viral genome on its own is not sufficient
64 proof of infectivity and caution is needed when evaluating the infectivity of specimens simply based on the
65 detection of viral nucleic acids⁵. In addition, viral genomic material can be still be present weeks after
66 infectious viral clearance.⁷ Like all tests, RT-qPCR requires validation against a gold standard. In this case
67 isolation of a whole virion (as opposed to fragments) and proof that the isolate is capable of replicating its
68 progeny in culture cells is the closest we are likely to get to a gold standard.⁸

69 Our [Open Evidence Review](#) of transmission modalities of SARS CoV-2 identified a low number of studies
70 which have attempted viral culture. There are objective difficulties in doing such cultures such as the
71 requirement for a level III laboratory, time and the quality of the specimens as well as financial availability of
72 reagents and culture media to rule out the presence of other pathogens.

73 As viral culture represents the best indicator of infection and infectiousness, we set out to review the
74 evidence on viral culture compared to PCR, and report the results of those studies attempting viral culture
75 regardless of source (specimen type) of the sample tested.

77 **Methods**

78 We conducted an initial search using LitCovid, medRxiv, Google Scholar and Google for Covid-19 using the
79 terms 'viral culture' or 'viral replication' and associated synonyms. Search last updated 18th August 2020. We
80 reviewed the results for relevance and the searches were stopped when no new relevant articles were
81 apparent. For articles that looked particularly relevant, citation matching was undertaken and relevant results
82 were identified.

83 We included studies reporting attempts to culture SARS-CoV-2 and those which also estimated the
84 infectiousness of the isolates or observed tissue invasion by SARS CoV-2. One reviewer extracted data for
85 each study and a second review checked and edited the extraction. We tabulated the data and summarised
86 data narratively by mode of sample: fecal, respiratory, environment or mixed.

Viral cultures for COVID-19 infectivity assessment – a systematic review
In: Analysis of the Transmission Dynamics of COVID-19: An Open Evidence Review

87 Where necessary we wrote to corresponding authors of the included or background papers for additional
88 information. We assessed quality using a modified QUADAS 2 risk of bias tool. We simplified the tool as the
89 included studies were not designed as primary diagnostic accuracy studies.⁹
90 This review is part of an [Open Evidence Review](#) on Transmission Dynamics of COVID-19. Summaries of the
91 included studies and the protocol (v1) are available at: [https://www.cebm.net/evidence-](https://www.cebm.net/evidence-synthesis/transmission-dynamics-of-covid-19/)
92 [synthesis/transmission-dynamics-of-covid-19/](https://www.cebm.net/evidence-synthesis/transmission-dynamics-of-covid-19/). Searches are updated every 2 weeks.

93

94 **Results**

95 We identified 118 articles of possible interest and after screening full texts included 17 (see PRISMA¹⁰ flow
96 chart - Figure 1). We identified one unpublished study which was not included as no permission to do so was
97 given by the authors. The salient characteristics of each included study are shown in Table 1.
98 All 14 studies were case series of **moderate quality** (Table 2. Quality of included studies). We could not
99 identify a protocol for any of the studies. All the included studies had been either published or were available
100 as preprints; all had been made public in 2020. We received four responses from authors regarding clarifying
101 information (see Acknowledgments).

102

103 **Studies using fecal samples**

104 Five studies used fecal samples which were positive for SARS-CoV-2 based on RT-PCR result¹¹⁻¹⁵ and
105 reported achieving viral isolation, and one laboratory study¹⁶ found that SARS-CoV-2 infected human small
106 intestinal organoids. A further study visually identified virions in colon tissue.¹⁷

107

108 **Studies using respiratory samples**

109 Six studies on respiratory samples report achieving viral isolation. One study assessed 90 nasopharyngeal
110 samples and cultured 26 of the samples, and positive cultures were only observed up to day eight post
111 symptom onset;⁴ another study obtained 31 cultures from 46 nasopharyngeal and oropharyngeal samples;
112 ¹⁸ while 183 nasopharyngeal and sputum samples produced 124 cases in which a cytopathic effect was
113 observed although the denominator of samples taken was unclear¹⁹. Another study in health care workers in
114 UK hospitals isolated one SARS Cov-2 from nineteen specimens in a situation of low viral circulation.²⁰
115 Two more studies^{21 22} reported a clear correlation between symptoms onset, date of sampling, Ct and
116 culturability.

117

118 **Studies using environmental samples**

119 Two possible positive cultures were obtained from 95 environmental samples in one study that assessed the
120 aerosol and surface transmission potential of SARS-CoV-2²³.

121

122 **Mixed sources**

123 Five studies reported viral culture from mixed sources. Using 60 samples from 50 cases of Covid-19, viral
124 culture was achieved from 12 oropharyngeal, nine nasopharyngeal and two sputum samples⁵. Jeong et al¹¹
125 who reported isolation live virus from a stool sample also reported that from of an unreported number of
126 nasopharyngeal, oropharyngeal, saliva, sputum and stool samples, one viral culture was achieved: ferrets

Viral cultures for COVID-19 infectivity assessment – a systematic review
In: Analysis of the Transmission Dynamics of COVID-19: An Open Evidence Review

127 inoculated with these samples became infected; SARS-CoV-2 was isolated from the nasal washes of the two
128 urine-treated ferrets and one stool-treated ferret¹¹. An unreported number of samples from saliva, nasal
129 swabs, urine, blood and stool collected from nine Covid-19 patients produced positive cultures and a
130 possible specimen stool culture²⁴. One study showed that from nine nasopharyngeal, oropharyngeal, stool,
131 serum and urine samples, all nine were culturable, including two from non-hospitalised Covid-19 patients²⁵.
132 Yao and colleagues cultured viable viral isolates from seven sputum samples, three stool samples and one
133 nasopharyngeal sample of 11 patient aged 4 months to 71 years, indicating that the SARS-CoV-2 is capable
134 of replicating in stool samples as well as sputum and the nasopharynx. ²⁶ All samples had been taken within
135 5 days of symptom onset. The authors also report a relationship between viral load (copy thresholds) and
136 cytopathic effect observed in infected culture cells. ²⁷

137

138 **The relationship between RT-PCR results and viral culture of SARS-CoV-2**

139 Eleven studies attempted to quantify the relationship between Cycle threshold and likelihood of culturing live
140 virus^{4 5 12 19 13 25 24 26 22 21 20}.

141 Due to the reporting within the studies it is not possible to currently make a quantitative assessment of the
142 association between RT-PCR results and the success rate of viral culture from the included studies. These
143 studies may be subject to reporting bias. We are, therefore, seeking further information from authors to
144 permit further analysis of the relationship between RT-PCR results and viral culture of SARS-CoV-2.

145

146 **Duration of viral shedding**

147 Eight studies report on the duration of viral shedding as assessed by PCR for SARS-CoV-2 RNA^{4 11 17 13 24 25}
148 ^{13 22}. The minimum duration of RNA shedding detected by PCR was seven days reported in Bullard, the
149 maximum duration of shedding was 35 days after symptom onset in Qian. Six out of eight studies reported
150 RNA shedding for longer than 14 days (see Table 3).

151

152 **Discussion**

153 This review shows that a number of studies have attempted and successfully achieved culture of SARS-
154 CoV-2 in the laboratory, using a range of respiratory, fecal or environmentally collected samples. The rate of
155 success is difficult to assess from available studies, and additional studies that we are unaware of may have
156 been performed with no viral culture achieved. There is likely to be a positive relationship between lower
157 cycle count threshold, viral culturability and date of symptom onset. However, more studies with
158 standardised methods²⁸ are needed to establish the magnitude and reliability of this association.

159

160 The purpose of viral testing is to assess the relation of the micro-organism and hazard to humans, i.e. its
161 clinical impact on the individual providing the sample for primary care and the risk of transmission to others
162 for public health. PCR on its own is unable to provide such answers. When interpreting the results of RT-
163 PCR it is important to take into consideration the clinical picture, the cycle threshold value and the number of
164 days from symptom onset to test (STT)²⁹. Several of our included studies assessed the relationship of these
165 variables and there appears to be a time window during which shedding is at its highest with low cycle
166 threshold and higher possibility of culturing a live virus. We propose that further work should be done on this

Viral cultures for COVID-19 infectivity assessment – a systematic review
In: Analysis of the Transmission Dynamics of COVID-19: An Open Evidence Review

167 with the aim of constructing a calibrating algorithm for PCR which are likely to detect infectious patients. PCR
168 should be continuously calibrated against a reference culture in Vero cells in which cytopathic effect has
169 been observed⁴. Confirmation of visual identification using methods such as an immunofluorescence assay
170 may also be relevant for some virus types⁸. Henderson and colleagues have called for a multicenter study
171 of all currently manufactured SARS-CoV-2 nucleic acid amplification tests to correlate the cycle threshold
172 values on each platform for patients who have positive and negative viral cultures. Calibration of assays
173 could then be done to estimate virus viability from the cycle threshold with some certainty.³⁰
174 Ascertainment of infectiousness is all the more important as there is good evidence of viral RNA persistence
175 across a whole range of different viral RNA disease with little or no infectivity in the post infectious phase on
176 MERS³¹, measles³², other coronaviridae³³, HCV and a variety of animal RNA viruses³³.

177
178 We are unsure whether SARS CoV-2 methods of cell culture have been standardised. Systems can vary
179 depending upon the selection of the cell lines; the collection, transport, and handling of and the maintenance
180 of viable and healthy inoculated cells³⁴. We therefore recommend that standard methods for culture should
181 be urgently developed. If identification of viral infectivity relies on visual inspection of cytopathogenic effect,
182 then a reference culture of cells must also be developed to test recognition against infected cells. Viral
183 culture may not be appropriate for routine daily results, but specialized laboratories should rely on their own
184 ability to use viruses as controls, perform complete investigations when needed, and store representative
185 clinical strains whenever possible³⁴. In the absence of a culture, ferret inoculation of specimen washings and
186 antibody titres could also be used. It may be impossible to produce a universal Cycle threshold value as this
187 may change with circumstances (e.g. hospital, community, cluster and symptom level), laboratory methods²⁸
188 and the current evidence base is thin.

189
190 We suggest the WHO produce a protocol to standardise the use and interpretation of PCR and routine use
191 of culture or animal model to continuously calibrate PCR testing, coordinated by designated [Biosafety Level](#)
192 [III laboratory](#) facilities with inward directional airflow³⁵.

193 The results of our review are similar to those of the living review by Cevick and colleagues³⁶. Although the
194 inclusion criteria are narrower than ours, the authors reviewed 79 studies on the dynamics, load and
195 shedding for SARS CoV-1, MERS and SARS CoV-2 from symptoms onset. They conclude that although
196 SARS-CoV-2 RNA shedding in respiratory (up to 83 days) and stool (35 days) can be prolonged, duration of
197 viable virus is relatively short-lived (up to a maximum of 8 days from symptoms onset). Results that are
198 consistent with Bullard et al who found no growth in samples with a cycle threshold greater than 24 or when
199 symptom onset was greater than 8 days. Thus, blanket detection of viral RNA cannot be used to infer
200 infectiousness. Length of excretion is also linked to age, male gender and use of steroids and possible
201 severity of illness. Of note, live virus excretion peaked later in SARS CoV-1 and MERS³⁶

202
203 The limits of our review are the low number of studies of relatively poor quality with lack of standardised
204 reporting and lack of gold testing for each country involved in the pandemic. This limits our ability to quantify

Viral cultures for COVID-19 infectivity assessment – a systematic review
In: Analysis of the Transmission Dynamics of COVID-19: An Open Evidence Review

205 the relationship between viral load, cycle threshold and viable virus detection. We plan to keep updating this
206 review with emerging evidence.

207

208 **Conclusion**

209

210 The current data are suggestive of a relation between the time from collection of a specimen to test, copy
211 threshold, and symptom severity, but the quality of the studies limits firm conclusions to be drawn. We
212 recommend that a uniform international standard for reporting of comparative SARS-CoV-2 culture with
213 index test studies be produced. Particular attention should be paid to the relationship between the results of
214 testing, clinical conditions and the characteristics of the source patients, description of flow of specimens and
215 testing methods. Defining cut off levels predictive of infectivity should be feasible and necessary for
216 diagnosing viral respiratory infections using molecular tests³⁷.

217 We will contact the corresponding authors of the 11 studies correlating ct with likelihood of culture to assess
218 whether it is possible to aggregate data and determine a firm correlation to aid decision making.

219

220

221 **Acknowledgments**

222 Drs Susan Amirian, Siyuan Ding, Long Rong and Sravanthi Parasato provided additional information for this
223 brief. Dr Maryanne DeMasi helped with reference identification.

224

225 **Funding**

226 The review was partly funded by NIHR Evidence Synthesis Working Group project 380 and supported by the
227 Maria and David Willets foundation.

228

229 **Disclaimer:** The article has not been peer-reviewed. The views expressed in this commentary represent the
230 views of the authors and not necessarily those of the host institution, the NHS, the NIHR, or the Department
231 of Health and Social Care. The views are not a substitute for professional medical advice. It will be regularly
232 updated see the evidence explorer at [https://www.cebm.net/evidence-synthesis/transmission-dynamics-of-](https://www.cebm.net/evidence-synthesis/transmission-dynamics-of-covid-19/)
233 [covid-19/](https://www.cebm.net/evidence-synthesis/transmission-dynamics-of-covid-19/) for regular updates to the evidence summaries and briefs.

234

235 **Data Availability**

236 All data included in the review are from publications or preprints. All extractions sheets with direct links to the
237 source paper are available from [https://www.cebm.net/evidence-synthesis/transmission-dynamics-of-covid-](https://www.cebm.net/evidence-synthesis/transmission-dynamics-of-covid-19/)
238 [19/](https://www.cebm.net/evidence-synthesis/transmission-dynamics-of-covid-19/)

239

240 **Authors:**

241 Tom Jefferson is a Senior Associate Tutor and Honorary Research Fellow, Centre for Evidence-Based
242 Medicine, University of Oxford. Disclosure statement is here

243

Viral cultures for COVID-19 infectivity assessment – a systematic review
In: Analysis of the Transmission Dynamics of COVID-19: An Open Evidence Review

244 Elizabeth Spencer is Epidemiology and Evidence Synthesis Researcher at the Centre for Evidence-Based
245 Medicine. (Bio and disclosure statement here)

246

247 Jon Brassey is the Director of Trip Database Ltd, Lead for Knowledge Mobilisation at Public Health Wales
248 (NHS) and an Associate Editor at the BMJ Evidence-Based Medicine.

249 Carl Heneghan is Professor of Evidence-Based Medicine, Director of the Centre for Evidence-Based
250 Medicine and Director of Studies for the Evidence-Based Health Care Programme. (Full bio and disclosure
251 statement here)

252 This work is licensed under a [Creative Commons Attribution-NonCommercial 4.0 International License](#).

253

254

255 **References**

- 256 1. Wynants L, Van Calster B, Collins GS, et al. Prediction models for diagnosis and prognosis of covid-19:
257 systematic review and critical appraisal. *BMJ* 2020;369:m1328. doi: 10.1136/bmj.m1328
- 258 2. Transmission of SARS-CoV-2: implications for infection prevention precautions. Scientific brief.
259 . 2020
- 260 3. Report of the WHO-China Joint Mission on Coronavirus Disease 2019 (COVID-19) 16-24 February 2020.
261 2020
- 262 4. Bullard J, Dust K, Funk D, et al. Predicting infectious SARS-CoV-2 from diagnostic samples. LID -
263 10.1093/cid/ciaa638 [doi] LID - ciaa638. (1537-6591 (Electronic))
- 264 5. Huang C-G, Lee K-M, Hsiao M-J, et al. Culture-Based Virus Isolation To Evaluate Potential Infectivity of
265 Clinical Specimens Tested for COVID-19. *J Clin Microbiol* 2020;58(8):e01068-20. doi:
266 10.1128/jcm.01068-20
- 267 6. Young BE, Ong SWX, Kalimuddin S, et al. Epidemiologic Features and Clinical Course of Patients Infected
268 With SARS-CoV-2 in Singapore. (1538-3598 (Electronic))
- 269 7. Atkinson B, Petersen E. SARS-CoV-2 shedding and infectivity. *The Lancet* 2020;395(10233):1339-40. doi:
270 10.1016/S0140-6736(20)30868-0
- 271 8. Hematian A, Sadeghifard N, Mohebi R, et al. Traditional and Modern Cell Culture in Virus Diagnosis.
272 *Osong public health and research perspectives* 2016;7(2):77-82. doi: 10.1016/j.phrp.2015.11.011
273 [published Online First: 2016/01/08]
- 274 9. Whiting PF, Rutjes Aw Fau - Westwood ME, Westwood Me Fau - Mallett S, et al. QUADAS-2: a revised
275 tool for the quality assessment of diagnostic accuracy studies. (1539-3704 (Electronic))
- 276 10. Moher D, Shamseer L, Clarke M, et al. Preferred reporting items for systematic review and meta-
277 analysis protocols (PRISMA-P) 2015 statement. *Syst Rev* 2015;4(1):1-1. doi: 10.1186/2046-4053-4-1
- 278 11. Jeong HW, Kim S-M, Kim H-S, et al. Viable SARS-CoV-2 in various specimens from COVID-19 patients.
279 *Clin Microbiol Infect* 2020:S1198-743X(20)30427-4. doi: 10.1016/j.cmi.2020.07.020
- 280 12. Wang W, Xu Y, Gao R, et al. Detection of SARS-CoV-2 in Different Types of Clinical Specimens. (1538-
281 3598 (Electronic))
- 282 13. Xiao F SJ, Xu Y, Li F et al. Infectious SARS-CoV-2 in feces of patient with severe COVID-19. 2020 doi:
283 <https://doi.org/10.3201/eid2608.200681>
- 284 14. Yong Z, Cao C, Shuangli Z, et al. Isolation of 2019-nCoV from a Stool Specimen of a Laboratory-
285 Confirmed Case of the Coronavirus Disease 2019 (COVID-19). *China CDC Weekly* 2020;2(8):123-24.
286 doi: 10.46234/ccdcw2020.033

Viral cultures for COVID-19 infectivity assessment – a systematic review
In: Analysis of the Transmission Dynamics of COVID-19: An Open Evidence Review

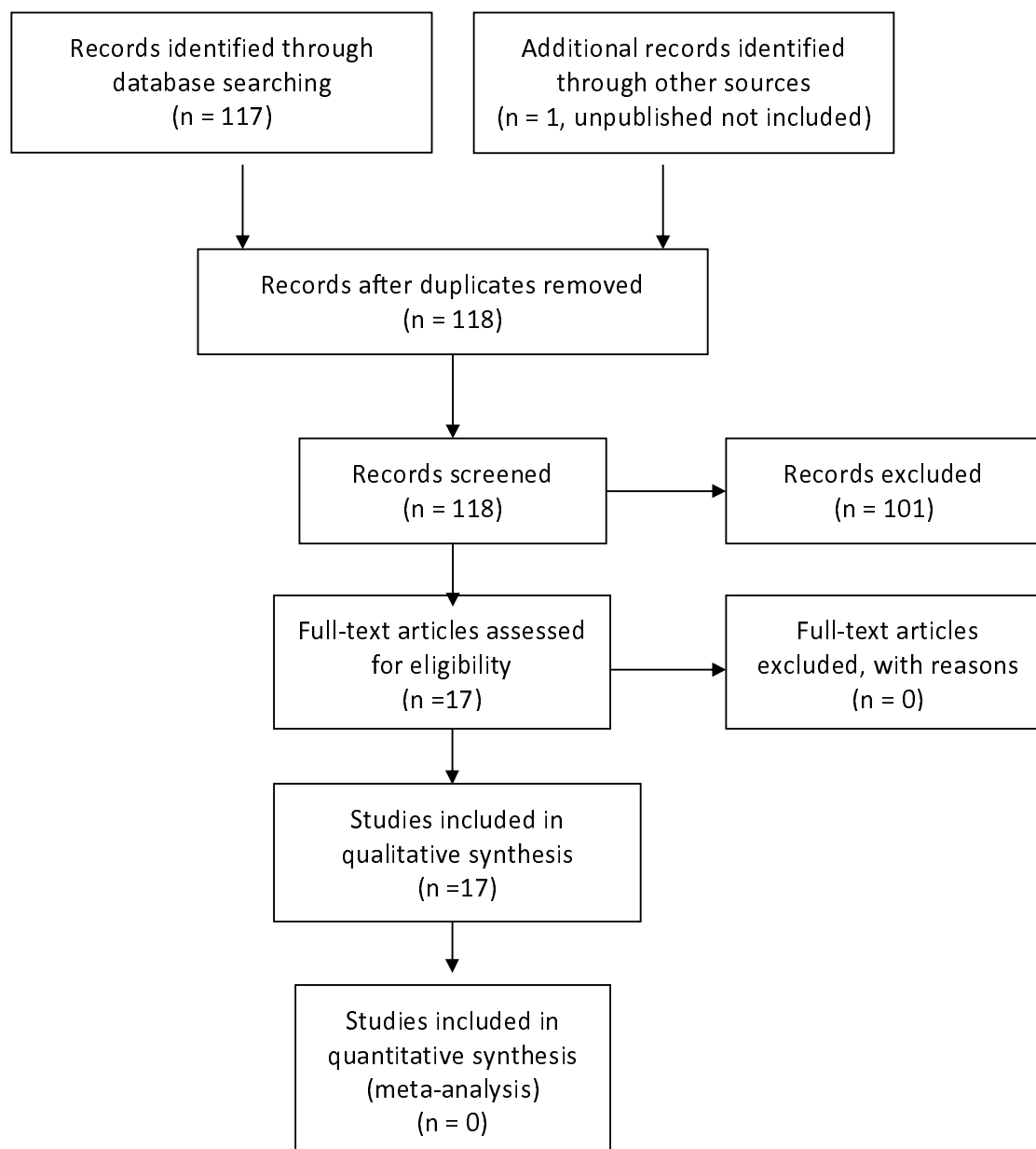
- 287 15. Xiao F, Tang M, Zheng X, et al. Evidence for Gastrointestinal Infection of SARS-CoV-2. (1528-0012
288 (Electronic))
- 289 16. Lamers MA-O, Beumer JA-O, van der Vaart JA-O, et al. SARS-CoV-2 productively infects human gut
290 enterocytes. (1095-9203 (Electronic))
- 291 17. Qian Q, Fan L, Liu W, et al. Direct evidence of active SARS-CoV-2 replication in the intestine. *Clinical*
292 *Infectious Diseases* 2020 doi: 10.1093/cid/ciaa925
- 293 18. Arons MM, Hatfield KM, Reddy SC, et al. Presymptomatic SARS-CoV-2 Infections and Transmission in a
294 Skilled Nursing Facility. *New England Journal of Medicine* 2020;382(22):2081-90. doi:
295 10.1056/NEJMoa2008457
- 296 19. La Scola B, Le Bideau M, Andreani J, et al. Viral RNA load as determined by cell culture as a management
297 tool for discharge of SARS-CoV-2 patients from infectious disease wards. *European Journal of*
298 *Clinical Microbiology & Infectious Diseases* 2020;39(6):1059-61. doi: 10.1007/s10096-020-03913-9
- 299 20. Brown CS, Clare K, Chand M, et al. Snapshot PCR surveillance for SARS-CoV-2 in hospital staff in England.
300 *Journal of Infection* 2020;81(3):427-34. doi: 10.1016/j.jinf.2020.06.069
- 301 21. Perera RAPM, Tso E, Tsang OTY, et al. SARS-CoV-2 Virus Culture and Subgenomic RNA for Respiratory
302 Specimens from Patients with Mild Coronavirus Disease. *Emerging Infectious Disease journal*
303 2020;26(11) doi: 10.3201/eid2611.203219
- 304 22. Singanayagam A, Patel M, Charlett A, et al. Duration of infectiousness and correlation with RT-PCR cycle
305 threshold values in cases of COVID-19, England, January to May 2020. *Eurosurveillance*
306 2020;25(32):2001483. doi: <https://doi.org/10.2807/1560-7917.ES.2020.25.32.2001483>
- 307 23. Santarpia JL, Rivera DN, Herrera V, et al. Aerosol and Surface Transmission Potential of SARS-CoV-2.
308 *medRxiv* 2020:2020.03.23.20039446. doi: 10.1101/2020.03.23.20039446
- 309 24. Wölfel R, Corman VM, Guggemos W, et al. Virological assessment of hospitalized patients with COVID-
310 2019. *Nature* 2020;581(7809):465-69. doi: 10.1038/s41586-020-2196-x
- 311 25. Kujawski SA, Wong KK, Collins JP, et al. Clinical and virologic characteristics of the first 12 patients with
312 coronavirus disease 2019 (COVID-19) in the United States. *Nature Medicine* 2020;26(6):861-68. doi:
313 10.1038/s41591-020-0877-5
- 314 26. Yao H, Lu X, Chen Q, et al. Patient-derived mutations impact pathogenicity of SARS-CoV-2. *medRxiv*
315 2020:2020.04.14.20060160. doi: 10.1101/2020.04.14.20060160
- 316 27. Yuan CA-O, Zhu H, Yang YA-OX, et al. Viral loads in throat and anal swabs in children infected with SARS-
317 CoV-2. (2222-1751 (Electronic))
- 318 28. Binnicker MA-O. Challenges and Controversies Related to Testing for COVID-19. LID - JCM.01695-20 [pii]
319 LID - 10.1128/JCM.01695-20 [doi]. (1098-660X (Electronic))
- 320 29. Tom MR, Mina MJ. To Interpret the SARS-CoV-2 Test, Consider the Cycle Threshold Value. *Clinical*
321 *Infectious Diseases* 2020 doi: 10.1093/cid/ciaa619
- 322 30. Henderson DK, Weber DJ, Babcock H, et al. The perplexing problem of persistently PCR-positive
323 personnel. *Infection Control & Hospital Epidemiology* 2020;1-2. doi: 10.1017/ice.2020.343
324 [published Online First: 2020/07/20]
- 325 31. Bin SY, Heo JY, Song M-S, et al. Environmental Contamination and Viral Shedding in MERS Patients
326 During MERS-CoV Outbreak in South Korea. *Clinical Infectious Diseases* 2015;62(6):755-60. doi:
327 10.1093/cid/civ1020
- 328 32. Lin W-HW, Kouyos RD, Adams RJ, et al. Prolonged persistence of measles virus RNA is characteristic of
329 primary infection dynamics. *Proceedings of the National Academy of Sciences* 2012;109(37):14989-
330 94. doi: 10.1073/pnas.1211138109
- 331 33. Owusu M, Annan A, Corman VM, et al. Human Coronaviruses Associated with Upper Respiratory Tract
332 Infections in Three Rural Areas of Ghana. *PLOS ONE* 2014;9(7):e99782. doi:
333 10.1371/journal.pone.0099782
- 334 34. Hodinka RL. Point: is the era of viral culture over in the clinical microbiology laboratory? *J Clin Microbiol*
335 2013;51(1):2-4. doi: 10.1128/JCM.02593-12 [published Online First: 2012/10/10]
- 336 35. Laboratory support for COVID-19 in the EU/EEA. Testing for SARS-CoV-2 virus European Centre for
337 Disease Prevention and Control. 2020

Viral cultures for COVID-19 infectivity assessment – a systematic review
In: Analysis of the Transmission Dynamics of COVID-19: An Open Evidence Review

- 338 36. Cevik M, Tate M, Lloyd O, et al. SARS-CoV-2, SARS-CoV-1 and MERS-CoV viral load dynamics, duration of
339 viral shedding and infectiousness: a living systematic review and meta-analysis. *medRxiv*
340 2020:2020.07.25.20162107. doi: 10.1101/2020.07.25.20162107
341 37. Jansen RR, Wieringa J, Koekkoek SM, et al. Frequent Detection of Respiratory Viruses without
342 Symptoms: Toward Defining Clinically Relevant Cutoff Values. *J Clin Microbiol* 2011;49(7):2631-36.
343 doi: 10.1128/jcm.02094-10
344

345
346
347

Figure 1 - PRISMA 2009 Flow Diagram



Viral cultures for COVID-19 infectivity assessment – a systematic review
 In: Analysis of the Transmission Dynamics of COVID-19: An Open Evidence Review

Study	Samples (source)	Samples (n) [SST]	Culture methods	Culture Positive	Additional notes
Bullard ⁴	Nasopharyngeal (NP) or endotracheal (ETT) from COVID-19 patients (mean age 45 years)	90 [0 to 7 days]	NP swabs and ETT specimens in viral transport media were stored at 4°C for 24-72 hours until they were tested for the presence of SARS-CoV-2 RNA using real-time RT-PCR targeting a 122nt portion of the Sarbecovirus envelope gene (E gene). Dilutions were placed onto the Vero cells in triplicate and incubated at 37°C with 5% CO ₂ for 96 hours. Following incubation of 4 days, cytopathic effect was evaluated under a microscope and recorded.	26	The range of symptoms onset to negative PCT was 21 days. Within this period, positive cultures were only observed up to day 8 post symptom onset
Huang ⁵	Oropharyngeal (OP) or nasopharyngeal (NP) swabs, or sputum (SP)	60 specimens from 50 cases [3,4 days mean but see table 1 for freeze thaw cycles delays]	SARS-CoV-2 cDNA was prepared using RNA extracted from the specimens of the first patient with confirmed COVID-19. RT was performed using the MMLV Reverse transcription kit. All procedures for viral culture were conducted in a biosafety level-3 facility. Vero-E6 and MK-2 (ATCC) cells were maintained in a virus culture medium and the cells were maintained in a 37°C incubator with daily observations of the cytopathic effect.	12 OP, 9 NP and two from SP specimens were culturable	Specimens with high copy numbers of the viral genome, indicative of higher viral load, were more likely to be culturable.
Jeong ¹¹	Naso/oropharyngeal swabs, saliva, urine, and stool	5 patients	Specimens positive by qPCR were subjected to virus isolation in Vero cells. Urine and stool samples were inoculated intranasally in ferrets and they evaluated the virus titers in nasal washes on 2, 4, 6, and 8 days post-infection (dpi). Immunofluorescence antibody assays were also done.	Naso/ oropharyngeal saliva, urine and stool Samples were collected between days 8 to 30 of the clinical course. Viable SARS-CoV-2 was isolated from 1 naso / oropharyngeal swab. Ferrets inoculated with patient urine or stool were infected. SARS-CoV-2 was isolated from the nasal washes of the 2 urine-	Viral loads in urine, saliva, and stool samples were almost equal to or higher than those in naso / oropharyngeal swabs. After symptom resolution, patients shed viable virus in their saliva and urine up to day 15 of illness.

Viral cultures for COVID-19 infectivity assessment – a systematic review
 In: Analysis of the Transmission Dynamics of COVID-19: An Open Evidence Review

				treated ferrets and one stool-treated ferret	
Qian ¹⁷	Rectal tissue obtained from a surgical procedure was available.	1 [1 to 3 days post op]	Ultrathin sections of tissue fixed in epoxy resin on formvar-coated copper grids were observed under electron microscope under 200kV. Immunohistochemical staining was used to establish expression and distribution of SARS-CoV-2 antigen.	1	No culture performed. Visualisation of virions in rectal tissue and detection of SARS-CoV-2 antigen in the rectal tissue.
Wang ¹²	Bronchoalveolar fluid, sputum, feces, blood, and urine specimens from hospital in-patients with COVID-19	4 fecal samples with sufficiently high copy numbers from 1,070 specimens collected from 205 patients with COVID-19 (mean age of 44 years and 68% male [1 to 3 days from hospital admission])	rRT-PCR targeting the open reading frame 1ab gene of SARS-CoV-2; cycle threshold values of rRT-PCR were used as indicators of the copy number of SARS-CoV-2 RNA in specimens with lower cycle threshold values corresponding to higher viral copy numbers. A cycle threshold value less than 40 was interpreted as positive for SARS-CoV-2 RNA. Four SARS-CoV-2 positive fecal specimens with high copy numbers were cultured, and then electron microscopy was performed to detect live virus.	4 viewed by electron microscope	The details of how the 4 samples were cultured were not reported. The patients did not have diarrhoea.
Xiao F, Sun J ¹³	Serial feces samples collected from 28 hospitalised COVID-19 patients: 3 samples from 3 RNA-positive patients were tested for possible viral culture.	3, one patient admitted day 7 post onset	Inoculation of Vero 6 cells. Cycle threshold values for the fecal sample were 23.34 for the open reading frame 1lab gene and 20.82 for the nucleoprotein gene. A cytopathic effect was visible in Vero E cells 2 days after a second-round passage. The researchers negatively stained culture supernatant and visualized by transmission electron microscopy. Viral particles that were visible were spherical and had distinct surface spike protein projections, consistent with a previously published SARS-CoV2 image.	2/3 (infectious virus was present in faeces from two cases)	Selection of samples is not entirely clear.
Arons ¹⁸	nasopharyngeal and oropharyngeal swabs	46 rRT-PCR–positive specimens [For asymptomatic]	All rRT-PCR positive samples shipped to USA CDC for viral culture using Vero-CCL-81 cells. Cells showing cytopathic effects were used for SARS-CoV-2 rRT-PCR to	31 [no relation to symptoms presence. Culturable virus isolated from 6 days before to 9 days after symptom]	

Viral cultures for COVID-19 infectivity assessment – a systematic review
 In: Analysis of the Transmission Dynamics of COVID-19: An Open Evidence Review

		median 4 days, Ct 23.1]	confirm isolation and viral growth in culture.	onset]	
La Scola ¹⁹	Naso pharyngeal swabs or sputum samples	183 (4384 samples from 3466 patients) [not reported]	From 1,049 samples, 611 SARS-CoV-2 isolates were cultured. 183 samples testing positive by RT-PCR (9 sputum samples and 174 nasopharyngeal swabs) from 155 patients, were inoculated in cell cultures. SARS-CoV-2. RNA rtPCR targeted the E gene. Nasopharyngeal swab fluid or sputum sample were filtered and then inoculated in Vero E6 Cells. All samples were inoculated between 4 and 10 h after sampling and kept at + 4 °C before processing. After centrifugation they were incubated at 37 °C. They were observed daily for evidence of cytopathogenic effect. Two subcultures were performed weekly and scanned by electron microscope and then confirmed by specific RT-PCR targeting E gene.	Of the 183 samples inoculated in the studied period of time, 129 led to virus isolation. Of these 124 samples had detectable cytopathic effect between 24 and 96 h	There was a significant relationship between Ct value and culture positivity rate: samples with Ct values of 13–17 all had positive culture. Culture positivity rate decreased progressively according to Ct values to 12% at 33 Ct. No culture was obtained from samples with Ct > 34. The 5 additional isolates obtained after blind subcultures had Ct between 27 and 34, thus consistent with low viable virus load.
Santarpia ²³	Windowsill and air, mean 7.3 samples per room. The percentage of PCR positive samples from each room was 40% - 100%	13 patients [days 5 to 9 and day 18 of isolation in a quarantine unit]	Vero E6 cells were used to culture virus from environmental samples. The cells were cultured in Dulbeccos's minimal essential medium (DMEM) supplemented with heat inactivated fetal bovine serum (10%), Penicillin/Streptomycin (10,000 IU/mL & 10,000 µg/mL) and Amphotericin B (25 µg/mL).	Possibly 2 with weak cytopathic effect	Isolates were from days 5 and 8 of occupancy of hospital/isolation rooms
Wölfel ²⁴	Saliva, nasal swabs, urine, blood and stool	9 patients [2 to 4 days]	The average virus RNA load was 6.76 × 10 ⁵ copies per the whole swab until day 5, and the maximum load was 7.11 × 10 ⁸ copies per swab. The last swab sample that tested positive was taken on day 28 after the onset of symptoms.	Yes in respiratory samples, and indicative in stool	
Kujawski ²⁵ (for The COVID-19	Nasopharyngeal (NP), oropharyngeal (OP), stool, serum and urine	9 from 9 patients	SARS-CoV-2 real-time PCR with reverse transcription (rRT-PCR) cycle threshold (Ct) values of virus isolated from the first tissue	9 (including two non-hospitalised)	Viable SARS-CoV-2 was cultured at day 9 of illness (patient 10), but was not

Viral cultures for COVID-19 infectivity assessment – a systematic review
 In: Analysis of the Transmission Dynamics of COVID-19: An Open Evidence Review

Investigation Team)	specimens		culture passage were 12.3 to 35.7 and for one patient, virus isolated from tissue culture passage 3 had a titer of 7.75×10^6 median tissue culture infectious dose per ml; these data were likely more reflective of growth in tissue culture than patient viral load.		attempted on later specimens. SARS-CoV-2 rRT-PCR Ct values of virus isolated from the first tissue culture passage were 12.3 to 35.7. Mean Ct values in positive specimens were 17.0 to 39.0 for NP, 22.3 to 39.7 for OP and 24.1 to 39.4 for stool. All blood and urine isolates were negative. Ct values of upper respiratory tract specimens were lower in the first week of illness than the second in most patients, low Ct values continued into the second and third week of illness.
Zhang ¹⁴	Stool	Unknown [not reported]	Vero cells were used for viral isolation from stool samples of Covid-19 patients. A 2019-nCoV strain was isolated from a stool specimen of a laboratory-confirmed COVID-19 severe pneumonia case, who experienced onset on January 16, 2020 and was sampled on February 1, 2020. The interval between sampling and onset was 15 days. The full-length genome sequence indicated that the virus had high-nucleotide similarity (99.98%) to that of the first isolated novel coronavirus isolated from Wuhan, China. In the Vero cells, viral particles with typical morphology of a coronavirus could be observed under the electron microscope.	1	We do not know what influenced successful virus culture e.g. methods optimal, or concentration of virus optimal. More information needed.
Xiao F. Tang M ¹⁵	Esophageal, gastric, duodenal, and rectal tissues were obtained from 1 COVID-19 patients by endoscopy.	1 plus an unknown additional number of fecal samples from RNA-positive patients. [not reported]	Histological staining (H&E) as well as viral receptor ACE2 and viral nucleocapsid staining were performed.	1/1 RNA-positive patient. Positive staining of viral nucleocapsid protein was visualized in the cytoplasm of gastric, duodenal, and rectum glandular epithelial cell, but not in esophageal epithelium of the 1 patient	Total sample numbers are not reported.

Viral cultures for COVID-19 infectivity assessment – a systematic review
 In: Analysis of the Transmission Dynamics of COVID-19: An Open Evidence Review

				providing these tissues. Additionally, positive staining of ACE2 and SARS-CoV-2 was also observed in gastrointestinal epithelium from other patients who tested positive for SARS-CoV-2 RNA in feces, results not shown.	
Yao ²⁶	Sputum (n=7), stool (n=3) and one nasopharyngeal sample	11 patients admitted to hospital: 9 classified as serious or critical, 1 moderate, 1 mild symptoms [0 to 16 days]	<p>The samples of the 11 patients involved in this study were collected during the early phase of the Covid-19 break out in China, dates ranging from 2nd of January to the 2nd of April 2020.</p> <p>All except one of the patients had moderate or worse symptoms. Three patients had comorbidities and one patient needed ICU treatment. Seven patients had sputum samples, one nasopharyngeal and three had stool samples</p> <p>The samples were pre-processed by mixing with appropriate volume of MEM medium with 2% FBS, Amphotericin B, Penicillin G, Streptomycin and TPCK-trypsin. The supernatant was collected after centrifugation at 3000 rpm at room 434 temperature. Before infecting Vero-E6 cells, all collected supernatant was filtered using a 435 0.45 µm filter to remove cell debris etc.</p> <p>Vero-E6 cells were infected with 11 viral isolates and quantitatively assessed their viral load at 1, 2, 4, 8, 24, and 48 hours post-infection (PI) and their viral cytopathic effects (CPE) at 48 and 72 hours PI and examined whether the viral isolates could successfully bind to Vero-E6 243 cells as expected.</p>	11 samples taken up to 16 days from admission to hospital.	Cultured viruses were inoculated in Vero cells. At 8 hours post-infection there was a significant decrease in Ct value (increases in viral load) for five isolates. At 24 hours significant decreases in the Ct values for all of the viral isolates were observed. Mutations of the viruses are also reported

Viral cultures for COVID-19 infectivity assessment – a systematic review
 In: Analysis of the Transmission Dynamics of COVID-19: An Open Evidence Review

			Super-deep sequencing of the 11 viral isolates on the Novaseq 6000 platform was performed.		
Singanayagam ²²	324 samples: nose, throat, combined nose-and throat and nasopharyngeal swabs and aspirates	253 positive case [-10 to 60 days]	Vero E6 cells were inoculated with clinical specimens and incubated at 37 °C, 5% CO ₂ . Cells were inspected for cytopathic effect daily up to 14 days. Presence of SARS-CoV-2 was confirmed by SARSCoV-2 nucleoprotein staining by enzyme immunoassay on infected cells.	133 (41%) samples (from 111 cases)	RT-PCR cycle threshold values correlate strongly with cultivable virus i.e. likelihood of infectiousness. Median Ct of all 324 samples was 31.15. Probability of culturing virus declines to 8% in samples with Ct > 35 and to 6% 10 days after onset and was similar in asymptomatic and symptomatic persons. Asymptomatic persons represent a source of transmissible virus but there is no difference in Ct values and culturability by age group.
Perera ²¹	68 specimens: nasopharyngeal aspirates combined with throat swab (n=49), nasopharyngeal aspirate (n=2), nasopharyngeal swab combined with throat swab (n=3), nasopharyngeal swab (n=2), sputum (n=11) and saliva (n=1).	35 patients, 32 with mild disease [1 to 67 days]	Specimens were tested for sgRNA with ≥5 log ₁₀ N gene copies per mL. The complementary DNA obtained was subjected to PCR (40 cycles). Vero E6 cells were seeded and incubated for 24 hours in a CO ₂ incubator. The culture medium was removed and 125 µL of the clinical specimen in virus transport medium diluted and was inoculated into 2 wells. After 2 hours incubation in a CO ₂ incubator at 37°C, the plates were incubated at 37°C in a CO ₂ incubator. A sample (100 µL) of supernatant was sampled for a quantitative real-time RT-PCR at 0 and 72 hours post inoculation. At 72 hours, cells were scraped into the supernatant and transferred onto fresh cells in 24-well plates and monitored for an additional 72 hours. A final quota of cells was collected for quantitative real-time RT-PCR. Cells were observed for cytopathic effect daily and harvested for testing if 25%–50% of cells	16/35 at a median 26 Ct	Culturable SARS CoV-2 and sub-genomic RNA (good indicator of replication) was rarely detectable beyond 8 days after onset of illness although virus RNA by RT-PCR remained for up to 70 days.

Viral cultures for COVID-19 infectivity assessment – a systematic review
 In: Analysis of the Transmission Dynamics of COVID-19: An Open Evidence Review

			showed a cytopathic effect.		
Brown ²⁰	Combined viral throat and nose swab from each participant n=1,152	Health care workers in six UK hospitals	Specimens were sent on the same day for detection of SARS-CoV-2 RNA by RT-PCR to the PHE national reference laboratory (five hospitals) or one hospital laboratory. The PHE laboratory used an Applied Biosystems 7500 FAST system targeting a conserved region of the SARS-CoV-2 open reading frame (ORF1ab) gene. The hospital laboratory used a different CE-IVD kit, targeting 3 SARS-CoV-2 genes (RdRp, E, and N). Both PCRs had internal controls. Viral culture of PHE laboratory positives was attempted in Vero E6 cells with virus detection confirmed by cytopathic effect up to 14 days post- inoculation.	SARS-CoV-2 virus was isolated from only one (5%) of nineteen cultured samples. It had a Ct value of 26.2.	<p>Symptoms in the past month were associated with threefold increased odds of testing positive (aOR 3.46, 95%CI 1.38 to 8.67; p_L=0.008).</p> <p>23 of 1,152 participants tested positive (2.0%) with a median Ct of 35.70 (IQR:32.42 to 37.57).</p>

Table 1. Characteristics of included studies. Key: STT = symptom onset to test date.

Study	Description of methods and sufficient detail to replicate	Sample sources clear	Analysis & reporting appropriate	Is bias dealt with	Applicability
Bullard 2020 ⁴	Yes	Yes	yes	unclear	unclear
Santarpia 2020 ²³	Yes	Yes	yes	unclear	unclear
Wölfel 2020 ²⁴	Yes	Yes	yes	unclear	unclear
Huang 2020 ⁵	yes	Yes	yes	unclear	unclear
Wang W ¹² 2020	No	Yes	yes	no	unclear
Zhang Y 2020 ¹⁴	Partly	Yes	yes	no	unclear
Xiao 2020b ¹⁵	No	Yes	yes	no	unclear
Qian Q 2020 ¹⁷	Yes	Yes	yes	unclear	unclear
Arons 2020 ¹⁸	Yes	Yes	yes	yes	unclear
Xiao F 2020 ¹³	Yes	Yes	yes	no	unclear
Kujawski 2020 ²⁵	Yes	Yes	yes	unclear	unclear
Jeong 2020 ¹¹	Yes	Yes	yes	no	unclear
La Scola 2020 ¹⁹	Yes	Yes	yes	unclear	unclear
Yoa H 2020 ²⁶	Yes	Yes	yes	unclear	unclear
Singanayagam ²²	Yes	No	Yes	unclear	unclear
Perera ²¹	Yes	Yes	Yes	unclear	unclear
Brown ²⁰	Yes	Yes	Yes	unclear	unclear

Table 2. Quality of included studies

Viral cultures for COVID-19 infectivity assessment – a systematic review
 In: Analysis of the Transmission Dynamics of COVID-19: An Open Evidence Review

Table 3. Duration of viral shedding in the included studies.

Study	Duration of viral shedding as assessed by PCR for SARS-CoV-2 RNA	Range of duration	Median of duration	Notes on clinical course
Bullard ⁴	Day 0 to day 7 at least.	NR	NR	NR
Jeong ¹¹	At least 8 days to at least 30 days	NR	NR	<p>5 positive-PCR patients, day 8 to day 30 after symptom onset.</p> <p>At the time of sampling, patients 1, 2, 3, and 5 were on days 8, 13, 11, and 30 of illness, respectively, and their clinical symptoms had resolved completely.</p> <p>Patient 4 was on day 15 of illness with a ventilator and extracorporeal membrane oxygenation support.</p> <p>All clinical specimens collected from the five patients were positive for the SARS-CoV-2 spike gene by qPCR, even though four of the patients no longer displayed clinical symptoms.</p>
Qian ¹⁷	SARS-CoV-2 RNA detected day 10 to between day 18 and day 35 after symptom onset.			<p>Covid-19 symptoms began on day 3 after surgery on day 0. SARS-CoV-2 PCR test done on day 7 after surgery.</p> <p>PCR on day 14 and day 18 post-surgery were positive.</p> <p>PCR on day 37 and day 38 after surgery were negative.</p> <p>Patient was discharged on day 41 after surgery following the 2 sequential negative PCR tests plus absence of clinical symptoms</p>

Viral cultures for COVID-19 infectivity assessment – a systematic review
 In: Analysis of the Transmission Dynamics of COVID-19: An Open Evidence Review

				and radiological abnormalities. Fecal samples day 35 after discharge were negative.
Xiao F, Sun J ¹³	Day 7 after symptom onset to at least day 28.			1 patient. SARS-CoV-2 RNA PCR positive at day 7 after symptom onset. Patient died two weeks after final sample.
Wölfel ²⁴	Up to day 28 after onset of symptoms.	NR	NR	9 cases. All swabs taken between day 1 and day 5 were positive by PCR. Virus could not be isolated from samples taken after day 8 even among cases with ongoing high viral loads of approximately 105 RNA copies/mL
Kujawski ²⁵ (for The COVID-19 Investigation Team)	Duration of SARS-CoV-2 detection by RT-PCR was 7 to 22 days	7 to 22 days		First 12 identified patients in the US. Respiratory specimens collected between illness days 1 to 9 (median, day 4) All patients had SARS-CoV-2 RNA detected in respiratory specimens, typically for 2 to 3 weeks after illness onset. Mean duration of fever was 9 days. Two patients received a short course of corticosteroids.
Xiao ¹⁵ , Tang M	1 to 12 days (stool samples) Duration of detection of SARS-CoV-2 respiratory samples not reported.	1 to 12 days	NR	Positive stool results duration ranged from 1 to 12 days. 17 (23%) patients continued to have positive results in stool after showing negative results in respiratory samples.

Viral cultures for COVID-19 infectivity assessment – a systematic review
 In: Analysis of the Transmission Dynamics of COVID-19: An Open Evidence Review

Singanayagam ²²	At least day 20 post symptom onset, upper respiratory tract swabs PCR	NR	NR	Median duration of virus shedding as measured by <u>viral culture</u> was 4 days (IQR: 1 to 8; range: –13 to 12, with symptom onset dates based on symptom recall)
----------------------------	---	----	----	--