

1 **Clinical characteristics and antibody response to SARS-CoV-2 spike 1 protein using the**
2 **VITROS Anti-SARS-CoV-2 antibody tests in COVID-19 patients in Japan**

3
4 Mayu Nagura-Ikeda^a, Kazuo Imai^{a, b*}, Katsumi Kubota^c, Sakiko Noguchi^c,

5 Yutaro Kitagawa^c, Masaru Matsuoka^c, Sakiko Tabata^a, Kazuyasu Miyoshi^a, Toshimitsu Ito^a,

6 Kaku Tamura^a, Takuya Maeda^c

7
8 a) Self-Defense Forces Central Hospital, Tokyo, Japan

9 b) Department of Infectious Disease and Infection Control, Saitama Medical University,

10 Saitama, Japan

11 c) Department of Clinical Laboratory, Saitama Medical University, Saitama, Japan

12
13
14 ***Corresponding author:**

15 Kazuo Imai, M.D.,

16 Self-Defense Forces Central Hospital, 24-2-1 Ikejiri, Setagaya-ku, Tokyo 154-0001, Japan

17 E-mail: k_imai@saitama-med.ac.jp

18 Tel: +81-3-3411-0151

19
20 **Key words:** SARS-CoV-2, COVID-19, Antibody, Chemiluminescent immunoassay, Japan

21
22 **Running title:** Evaluation of antibody tests for COVID-19

24 **Abstract**

25 **Background:** We evaluated clinical characteristics and the clinical utility of VITROS

26 SARS-CoV-2 antibody tests according to COVID-19 severity in patients in Japan.

27 **Methods:** We analyzed 255 serum specimens from 130 COVID-19 patients and examined

28 clinical records and laboratory data. Presence of total (IgA, IgM, and IgG) and specific IgG

29 antibody for the spike 1 antigen of SARS-CoV2 was determined using VITROS

30 Anti-SARS-CoV-2 antibody tests.

31 **Findings:** Overall, 98 (75.4%) and 32 (24.6%) patients had mild and severe COVID-19,

32 respectively. On admission, 76 (58.5%) and 45 (34.6%) patients were positive for total and

33 IgG antibody assays. Among 91 patients at discharge, 90 (98.9%) and 81 (89.0%) patients

34 were positive for total and IgG antibody, respectively. Clinical background and laboratory

35 findings on admission, but not the prevalence or concentration of total or IgG antibody, were

36 associated with disease prognosis. Total and IgG antibody intensity were significantly higher

37 in severe cases than in mild cases in serum collected after 11 days from onset, but not within

38 10 days.

39 **Conclusion:** VITROS Anti-SARS-CoV-2 Total and IgG assays will be useful as supporting

40 diagnostic and surveillance tools and for evaluation of humoral immune response to

41 COVID-19. Clinical background and laboratory findings are preferable predictors of disease

42 prognosis.

43

44 **Introduction**

45 The novel coronavirus disease 2019 (COVID-19), which is caused by severe acute
46 respiratory syndrome coronavirus 2 (SARS-CoV-2) infection, was initially reported in
47 December 2019 in Wuhan, China [1], and it has since gained pandemic status worldwide [2].
48 Serological tests are important because they provide faster results for surveillance and they
49 support diagnosis based on the gold standard method of quantitative reverse-transcription
50 polymerase chain reaction (RT-qPCR) [3]. Additionally, several reports have suggested that
51 the antibody response to SARS-CoV-2 could be associated with disease severity [4-11].
52 Therefore, investigating this response in COVID-19 patients is important in order to assess
53 the clinical utility of serological assays as supporting diagnostic tools and to understand the
54 pathogenicity of SARS-CoV-2.

55 The serological tests currently available to detect total, IgM, and IgG antibodies against
56 SARS-CoV-2 include enzyme-linked immunosorbent assay (ELISA),
57 immunochromatography assay, and chemiluminescence immunoassay (CLIA) [12-15]. In
58 particular, CLIA is widely used for COVID-19 detection in clinical settings because it is a
59 rapid, high-throughput, and semi-quantitative method for detecting antibodies that is easy to
60 perform. Commercial serological assays use a variety of SARS-CoV-2 antigens, including
61 internal nucleocapsid protein (NP) and external spike (S) proteins. The S protein is composed
62 of two subunits, S1 and S2. S1 contains the receptor binding domain (RBD), which is
63 responsible for binding to the angiotensin-converting enzyme 2 (ACE2) receptor on the host
64 cells at initiation of infection [16]. RBD is considered the major epitope recognized by
65 SARS-CoV-2 neutralization antibodies [11, 17, 18]. Therefore, CLIA kits using S1 antigen are
66 expected to be used both for diagnostic support and for the assessment of humoral immunity
67 against SARS-CoV-2. The VITROS Anti-SARS-CoV-2 Total Antibody Test and VITROS
68 Anti-SARS-CoV-2 IgG Antibody Test (Ortho Clinical Diagnostics, Raritan, NJ) both use the

69 S1 protein of SARS-COV-2 and have been approved by the US Food and Drug
70 Administration as commercial CLIAs for SARS-CoV-2 [19]. However, the clinical utility of
71 these two antibody assays for COVID-19 and differences in antibody response in association
72 with disease severity have not been well evaluated [20].

73 Here, we describe the clinical characteristics of patients with COVID-19 in Japan
74 and report the clinical performance of and antibody response to the VITROS
75 Anti-SARS-CoV-2 antibody assays for total (IgA, IgM, and IgG) and specific IgG antibodies
76 to S1 protein of SARS-CoV-2, assessed in 255 serum samples collected from 130 COVID-19
77 patients with differing disease severity.

78

79 **Methods**

80 *Patients with COVID-19 and serum samples*

81 This study included 130 patients with COVID-19 who were referred to the
82 Self-Defense Forces Central Hospital, a designated medical institution for specific infectious
83 diseases in Tokyo, Japan, from February 26 to May 8, 2020. All were confirmed to have
84 COVID-19 infection by RT-qPCR for SARS-CoV-2 according to the nationally recommended
85 protocol [21]. We retrospectively collected patient information from electronic medical
86 records. Serum samples were collected on the day of admission and during hospitalization.
87 All serum samples were stored at -80°C before use in the antibody tests. This study was
88 reviewed and approved by the Self-Defense Forces Central Hospital (approval number
89 01-011), and Saitama Medical University (approval number 917). Written informed consent
90 was obtained from enrolled patient.

91

92 *Detection of antibodies for SARS-CoV-2*

93 Total and IgG antibody assays against SARS-CoV-2 S proteins were performed using
94 the VITROS Anti-SARS-CoV-2 Total Antibody Test and VITROS Anti-SARS-CoV-2 IgG
95 Antibody Test (Ortho Clinical Diagnostics) according to the manufacturer's instructions.
96 Results were interpreted in accordance with these instructions as positive (signal for test
97 sample /signal at cutoff $[S/CO] \geq 1.00$) or negative ($S/CO < 1.0$) for both total and IgG
98 assays.

99

100 ***Definition of cases***

101 Symptomatic cases were then subdivided into severe and mild groups. Severe
102 symptomatic cases were defined as patients with clinical symptoms of pneumonia (saturation
103 of percutaneous oxygen $[SpO_2] < 93\%$ and need for oxygen therapy). Other symptomatic
104 cases were classified as mild. The criterion for discharging COVID-19 patients from hospital
105 was a negative result on two consecutive RT-qPCR tests [21] using throat swab specimens
106 under the Infectious Disease Control Law in effect from February 11 to May 13, 2020.

107

108 **Statistical analysis**

109 Continuous variables are expressed as the mean \pm standard deviation (SD) or
110 median interquartile range [IQR] and were compared using the t-test or Wilcoxon Rank Sum
111 test for parametric or non-parametric data, respectively. Categorical variables are expressed as
112 number (%) and were compared using the χ^2 test or Fisher's exact test. All statistical analyses
113 were performed using R (v 4.0.0; R Foundation for Statistical Computing, Vienna, Austria
114 [<http://www.R-project.org/>]).

115

116 **Results**

117 ***Clinical characteristics of patients with COVID-19 in Japan***

118 Table 1 shows the baseline clinical characteristics of all 130 patients. Briefly, the
119 patients ranged in age from 18 to 91 years (median, 45 years; IQR, 37–59 years); 77 (59.2%)
120 were male and 53 (40.8%) were female. The time from symptom onset to admission day was
121 3–21 days (median, 8 days; IQR, 6–10 days). Among the 66 (50.8%) patients who had
122 underlying diseases, hypertension (17.7%) and respiratory disorder (17.7%) were most
123 frequently observed. The most common clinical features on admission were fever (91.5%)
124 and cough (53.1%). Furthermore, 76 (58.5%) and 45 (34.6%) patients were positive for total
125 and IgG antibody assay, respectively, on admission. In total, 126 (96.9%) patients recovered
126 and were discharged from hospital, and 4 (3.1%) patients died during the observation period.
127 The median duration from initial symptom onset to confirmatory twice-negative PCR for
128 SARS-CoV-2 RNA was 17 days (IQR 14-22 days). Also, 32 (24.6%) patients required
129 supplemental oxygen therapy and were classified as having severe COVID-19. The medium
130 period from symptom onset to requiring supplemental oxygen therapy was 9 days (IQR 7-11
131 days). Among the 32 severe cases, high-flow nasal cannula therapy was required in 14
132 (10.8%) and mechanical ventilation was required in 5 (3.8%).

133 Univariate analysis revealed that age ($p < 0.001$) and male preponderance ($p = 0.002$)
134 were significantly higher in the severe COVID-19 group than in the mild COVID-19 group.
135 The prevalence of underlying disease was also higher in severe cases ($p < 0.001$), with
136 significant differences especially in the prevalence of hypertension ($p < 0.001$), diabetes
137 mellitus ($p = 0.013$), and malignancy ($p = 0.014$). There were no significant differences in
138 clinical features between the two groups. Blood test results revealed severe cases had higher
139 concentrations of aspartate aminotransferase (AST), alanine aminotransferase (ALT), lactate
140 dehydrogenase (LDH), and C-reactive protein (CRP), higher white blood cell count and
141 neutrophil/lymphocyte ratio (NLR), and lower sodium level and lymphocyte count than mild
142 cases. There were no significant differences in the positivity rate or S/CO for either total or

143 IgG antibody assay on admission between the two groups.

144 All 91 patients had paired serum samples, collected on admission and discharge
145 (Table 2), and among them on discharge, 90 (98.9%) and 81 (89.0%) patients were positive
146 for total and IgG antibody, respectively. The S/CO of total and IgG antibody on discharge was
147 significantly higher in severe cases than in mild cases ($p < 0.001$ for total and $p = 0.009$ for
148 IgG antibodies), while there was no significant difference in the seropositive rate for either
149 total or IgG antibody between the two groups on discharge ($p > 0.05$).

150

151 ***Comparison of antibody response in COVID-19 patients***

152 For the 255 collected serum specimens obtained from 130 patients, the period from
153 initial symptom onset to sample collection was 1–49 (median 13 days, IQR 9-18). Among the
154 serum specimens, the positivity rate for total and IgG increased with longer clinical course,
155 and total antibody was detected earlier than specific IgG antibody (Figure 1). In mild and
156 severe cases, total antibody assay was positive in 54.4% (37/68) and 47.8% (11/23) of
157 specimens collected within 10 days of onset, in 95.6% (86/90) and 100% (28/28) collected
158 within 11–20 days, and 100% (23/23) and 100% (23/23) collected >21 days after onset,
159 respectively. The corresponding detection rates for IgG antibody were 25.0% (17/68) and
160 26.1% (6/23), 75.6% (68/90) and 89.3% (25/28), and 100% (23/23) and 100% (23/23). There
161 was no significant difference in the prevalence of total or IgG antibody positivity between
162 severe and mild cases ($p > 0.05$). Among the 130 patients, 3 serum samples collected from 2
163 patients were negative for total antibody but positive for IgG antibody. Among both mild and
164 severe cases, S/CO also increased with a longer clinical course (Figure 2). S/CO for the total
165 and IgG antibody assays was significantly higher in severe cases than in mild cases among
166 serum samples collected from patients 11–20 days after onset ($p < 0.001$ for both total and
167 IgG antibodies) and >21 days after onset ($p = 0.039$ for total and $p < 0.001$ for IgG antibodies),

168 but there was no significant difference within 10 days ($p > 0.05$ for both total and IgG
169 antibodies; Figure 3).

170

171 **Discussion**

172 Here, we have presented the clinical characteristics of patients with COVID-19 in
173 Japan and provided evidence for the clinical utility of the VITROS Anti-SARS-CoV-2 Total
174 and IgG assays in diagnosing COVID-19 as well as for differences in antibody response
175 against the SARS-CoV-2 S1 protein with regard to disease severity.

176 Total antibody (IgA, IgM, and IgG) for SARS-CoV-2 S1 protein was detected earlier
177 than IgG antibody, and therefore total antibody assays appear to be preferable for initial
178 diagnostic testing for COVID-19 in patients who develop symptoms within 2 weeks. The
179 sensitivity of the total antibody assay was 47.8-54.4% and 95.6-100% in serum collected
180 within 10 days and >11 days from onset, respectively. This finding was consistent with
181 previous reports, which showed rapidly increased detection of IgA, IgM, and IgG antibodies
182 against S protein from day 10-15 after onset based on ELISA [22, 23], and other commercial
183 CLIA kits that used the NP or S1+2 protein as an antigen [24-26]. In this study, we
184 demonstrated that disease severity did not affect the positivity rate of the VITROS
185 Anti-SARS-CoV-2 Total antibody assay. Therefore, the total antibody assay will be useful in
186 clinical settings as a supporting diagnostic tool alongside the gold standard RT-qPCR for both
187 mild and severe cases.

188 Regarding the timing of discharge with negative viral RNA results from throat swab
189 specimens, the positivity rate for total and IgG antibodies was 98.9% and 89.0%, respectively.
190 Additionally, almost 100% of serum samples were positive for total and IgG antibodies in the
191 late phase of the clinical course (>21 days) in both mild and severe cases. Generally, both IgA
192 and IgM antibodies have a relatively shorter lifespan than IgG antibody. Also, IgA antibody

193 for S1 protein is reported to be less specific than IgG [11]. Taken together, the IgG antibody
194 assay is preferable to the total antibody assay for surveillance of COVID-19 seroprevalence.
195 Liu et al. reported a strong correlation of the IgG titer against S1 with the RBD. [27] Although
196 further study is still needed to clarify the correlation of antibody titer determined by the
197 VITROS Anti-SARS-CoV-2 antibody assays and neutralization antibody, the weight of
198 evidence to date suggests that the VITROS Anti-SARS-CoV-2 antibody assays also may be
199 used for the evaluation of humoral immunity against SARS-CoV-2.

200 In terms of the discrepancy in antibody response to S protein with regard to severity,
201 Zhao et al. reported a significantly higher antibody titer for S protein in severe cases than mild
202 cases based on ELISA [22]. Our findings of higher S/CO for both the total and IgG antibody
203 assays in severe cases in serum collected after 11 days from symptom onset are consistent
204 with theirs. However, antibody titer within 10 days after onset or on the day of admission did
205 not differ significantly according to disease severity. In our study, median time from symptom
206 onset to admission and time from onset to need for oxygen therapy was 8 and 9 days,
207 respectively. Thus, antibody titer may be an indicator of disease severity, but it may not be a
208 predictor of prognosis in the early phase. In this study, clinical background (distribution of
209 age, sex, and underlying disease) and laboratory findings (AST, ALT, LDH, CRP, sodium,
210 WBC count, lymphocyte count, and NLR) on admission were associated with disease
211 prognosis, as reported previously [28-32]. Therefore, it is preferable to use these clinical
212 background characteristics and laboratory findings as predictors of disease prognosis in the
213 early phase of the clinical course.

214 This study has some limitations. First, despite the confirmed high specificity of
215 VITROS Anti-SARS-CoV-2 antibody assays [19, 20], specificity should be further analyzed
216 using clinical specimens from non-COVID-19 patients. Also, recent reports showed a
217 time-dependent decrease in antibody titer after the initial infection, especially in

218 asymptomatic and mild cases [33]. Further studies are warranted to determine the utility of
219 VITROS Anti-SARS-CoV-2 antibody assays as diagnostic and surveillance tools for
220 COVID-19.

221

222 **Conclusion**

223 The qualitative results of the VITROS Anti-SARS-CoV-2 Total and IgG assays are
224 useful, as are their S/CO values in supporting diagnosis and surveillance in both mild and
225 severe COVID-19 cases. There are differences in antibody response to SARS-CoV-2 S1
226 protein according to disease severity, and thus clinical background characteristics and
227 laboratory findings are preferable predictors of disease prognosis in the early phase of the
228 clinical course.

229

230 **References**

231 [1] Huang C, Wang Y, Li X, Ren L, Zhao J, Hu Y, et al. Clinical features of patients infected
232 with 2019 novel coronavirus in Wuhan, China. *The Lancet*. 2020;395:497-506. DOI:
233 10.1016/S0140-6736(20)30183-5.

234 [2] World Health Organization.
235 <https://www.who.int/emergencies/diseases/novel-coronavirus-2019>. [Latest accessed
236 14/Jul/2020]

237 [3] Winter AK, Hegde ST. The important role of serology for COVID-19 control. *The Lancet*
238 *Infectious Diseases*. 2020;20:758-759. DOI: 10.1016/S1473-3099(20)30322-4.

239 [4] Shen L, Wang C, Zhao J, Tang X, Shen Y, Lu M, et al. Delayed specific IgM antibody
240 responses observed among COVID-19 patients with severe progression. *Emerging Microbes*
241 *& Infections*. 2020;9:1096-101. DOI: 10.1080/22221751.2020.1766382.

242 [5] Sun B, Feng Y, Mo X, Zheng P, Wang Q, Li P, et al. Kinetics of SARS-CoV-2 specific

243 IgM and IgG responses in COVID-19 patients. *Emerging Microbes & Infections*.
244 2020;9:940-8. DOI: 10.1080/22221751.2020.1762515.

245 [6] Qu J, Wu C, Li X, Zhang G, Jiang Z, Li X, et al. Profile of IgG and IgM antibodies against
246 severe acute respiratory syndrome coronavirus 2 (SARS-CoV-2). *Clinical Infectious Diseases*.
247 2020. DOI: 10.1093/cid/ciaa489

248 [7] Xie J, Ding C, Li J, Wang Y, Guo H, Lu Z, et al. Characteristics of patients with
249 coronavirus disease (COVID-19) confirmed using an IgM-IgG antibody test. *Journal of*
250 *Medical Virology*. 2020. DOI: 10.1002/jmv.25930

251 [8] Hou H, Wang T, Zhang B, Luo Y, Mao L, Wang F, et al. Detection of IgM and IgG
252 antibodies in patients with coronavirus disease 2019. *Clinical & Translational Immunology*.
253 2020;9:e01136. DOI: 10.1002/cti2.1136

254 [9] To KK, Tsang OT, Leung WS, Tam AR, Wu TC, Lung DC, et al. Temporal profiles of viral
255 load in posterior oropharyngeal saliva samples and serum antibody responses during infection
256 by SARS-CoV-2: an observational cohort study. *The Lancet Infectious Diseases*.
257 2020;20:565-74. DOI: 10.1016/S1473-3099(20)30196-1.

258 [10] Perera RA, Mok CK, Tsang OT, Lv H, Ko RL, Wu NC, et al. Serological assays for
259 severe acute respiratory syndrome coronavirus 2 (SARS-CoV-2), March 2020. *Euro*
260 *Surveillance*. 2020;25. DOI: 10.2807/1560-7917.ES.2020.25.16.2000421

261 [11] Okba NMA, Müller MA, Li W, Wang C, GeurtsvanKessel CH, Corman VM, et al. Severe
262 Acute Respiratory Syndrome Coronavirus 2-Specific Antibody Responses in Coronavirus
263 Disease Patients. *Emerging Infectious Diseases*. 2020;26:1478-88. DOI:
264 10.3201/eid2607.200841

265 [12] Yong SEF, Anderson DE, Wei WE, Pang J, Chia WN, Tan CW, et al. Connecting clusters
266 of COVID-19: an epidemiological and serological investigation. *The Lancet Infectious*
267 *Diseases*. 2020;20:809-815. DOI: 10.1016/S1473-3099(20)30273-5

268 [13] Bryan A, Pepper G, Wener MH, Fink SL, Morishima C, Chaudhary A, et al. Performance
269 Characteristics of the Abbott Architect SARS-CoV-2 IgG Assay and Seroprevalence in Boise,
270 Idaho. *Journal of Clinical Microbiology*. 2020. DOI: 10.1128/JCM.00941-20.

271 [14] Pan Y, Li X, Yang G, Fan J, Tang Y, Zhao J, et al. Serological immunochromatographic
272 approach in diagnosis with SARS-CoV-2 infected COVID-19 patients. *Journal of Infection*.
273 2020;81:e28-e32. DOI: 10.1016/j.jinf.2020.03.051.

274 [15] Kohmer N, Westhaus S, Rühl C, Ciesek S, Rabenau HF. Brief clinical evaluation of six
275 high-throughput SARS-CoV-2 IgG antibody assays. *Journal of Clinical Virology*.
276 2020;129:104480. DOI: 10.1016/j.jcv.2020.104480.

277 [16] Walls AC, Park YJ, Tortorici MA, Wall A, McGuire AT, Veessler D. Structure, Function,
278 and Antigenicity of the SARS-CoV-2 Spike Glycoprotein. *Cell*. 2020;181:281-92.e6. DOI:
279 10.1016/j.cell.2020.02.058.

280 [17] Premkumar L, Segovia-Chumbez B, Jadi R, Martinez DR, Raut R, Markmann A, et al.
281 The receptor binding domain of the viral spike protein is an immunodominant and highly
282 specific target of antibodies in SARS-CoV-2 patients. *Science Immunology*. 2020;5:eabc8413.
283 DOI: 10.1126/sciimmunol.abc8413.

284 [18] Amanat F, Stadlbauer D, Strohmeier S, Nguyen THO, Chromikova V, McMahon M, et al.
285 A serological assay to detect SARS-CoV-2 seroconversion in humans. *Nature Medicine*. 2020.
286 26:1033-1036. DOI: 10.1038/s41591-020-0913-5.

287 [19] U.S. Food and Drug Administration. EUA Authorized Serology Test Performance.
288 [https://www.fda.gov/medical-devices/emergency-situations-medical-devices/eua-authorized-s-](https://www.fda.gov/medical-devices/emergency-situations-medical-devices/eua-authorized-serology-test-performance)
289 [erology-test-performance](https://www.fda.gov/medical-devices/emergency-situations-medical-devices/eua-authorized-serology-test-performance). [Latest accessed 14/Jul/2020]

290 [20] Theel ES, Harring J, Hilgart H, Granger D. Performance Characteristics of Four
291 High-Throughput Immunoassays for Detection of IgG Antibodies against SARS-CoV-2.
292 *Journal of Clinical Microbiology*. 2020. DOI: 10.1128/JCM.01243-20.

293 [21] Shirato K, Nao N, Katano H, Takayama I, Saito S, Kato F, et al. Development of Genetic
294 Diagnostic Methods for Novel Coronavirus 2019 (nCoV-2019) in Japan. *Japanese Journal of*
295 *Infectious Diseases*. 2020. DOI: 10.7883/yoken.JJID.2020.061.

296 [22] Zhao J, Yuan Q, Wang H, Liu W, Liao X, Su Y, et al. Antibody responses to
297 SARS-CoV-2 in patients of novel coronavirus disease 2019. *Clinical Infectious Diseases*.
298 2020. DOI: 10.1093/cid/ciaa344.

299 [23] Liu W, Liu L, Kou G, Zheng Y, Ding Y, Ni W, et al. Evaluation of Nucleocapsid and
300 Spike Protein-Based Enzyme-Linked Immunosorbent Assays for Detecting Antibodies against
301 SARS-CoV-2. *Journal of Clinical Microbiology*. 2020;58:e00461-20. DOI:
302 10.1128/JCM.00461-20.

303 [24] Nicol T, Lefeuvre C, Serri O, Pivert A, Joubaud F, Dubée V, et al. Assessment of
304 SARS-CoV-2 serological tests for the diagnosis of COVID-19 through the evaluation of three
305 immunoassays: Two automated immunoassays (Euroimmun and Abbott) and one rapid lateral
306 flow immunoassay (NG Biotech). *Journal of Clinical Virology*. 2020;129:104511. DOI:
307 10.1016/j.jcv.2020.104511.

308 [25] Theel ES, Harring J, Hilgart H, Granger D. Performance Characteristics of Four
309 High-Throughput Immunoassays for Detection of IgG Antibodies against SARS-CoV-2.
310 *Journal of clinical microbiology*. 2020. DOI: 10.1128/JCM.01243-20.

311 [26] Egger M, Bundschuh C, Wiesinger K, Gabriel C, Clodi M, Mueller T, et al. Comparison
312 of the Elecsys® Anti-SARS-CoV-2 immunoassay with the EDI™ enzyme linked
313 immunosorbent assays for the detection of SARS-CoV-2 antibodies in human plasma. *Clinica*
314 *Chimica Acta*. 2020;509:18-21. DOI: 10.1016/j.cca.2020.05.049.

315 [27] Liu T, Hsiung J, Zhao S, Kost J, Sreedhar D, Olson K, et al. High-Accuracy Multiplexed
316 SARS-CoV-2 Antibody Assay with Avidity and Saliva Capability on a Nano-Plasmonic
317 Platform. *bioRxiv*. 2020:2020.06.16.155580. DOI: <https://doi.org/10.1101/2020.06.16.155580>

- 318 [28] Liu J, Liu Y, Xiang P, Pu L, Xiong H, Li C, et al. Neutrophil-to-lymphocyte ratio predicts
319 critical illness patients with 2019 coronavirus disease in the early stage. *Journal of*
320 *Translational Medicine*. 2020;18:206. DOI: 10.1186/s12967-020-02374-0.
- 321 [29] Zhou F, Yu T, Du R, Fan G, Liu Y, Liu Z, et al. Clinical course and risk factors for
322 mortality of adult inpatients with COVID-19 in Wuhan, China: a retrospective cohort study.
323 *Lancet*. 2020;395:1054-62. DOI: 10.1016/S0140-6736(20)30566-3.
- 324 [30] Tabata S, Imai K, Kawano S, Ikeda M, Kodama T, Miyoshi K, et al. Clinical
325 characteristics of COVID-19 in 104 people with SARS-CoV-2 infection on the Diamond
326 Princess cruise ship: a retrospective analysis. *The Lancet Infectious Diseases*. 2020. DOI:
327 10.1016/S1473-3099(20)30482-5.
- 328 [31] Li X, Xu S, Yu M, Wang K, Tao Y, Zhou Y, et al. Risk factors for severity and mortality
329 in adult COVID-19 inpatients in Wuhan. *The Journal of Allergy and Clinical Immunology*.
330 2020;146:110-8. DOI: 10.1016/j.jaci.2020.04.006.
- 331 [32] Wang Y, Shi L, Wang Y, Yang H. An updated meta-analysis of AST and ALT levels and
332 the mortality of COVID-19 patients. *American Journal of Emergency Medicine*.
333 2020:S0735-6757:30426-5. DOI: 10.1016/j.ajem.2020.05.063.
- 334 [33] Long Q-X, Tang X-J, Shi Q-L, Li Q, Deng H-J, Yuan J, et al. Clinical and immunological
335 assessment of asymptomatic SARS-CoV-2 infections. *Nature Medicine*. 2020. DOI:
336 10.1038/s41591-020-0965-6.

337

338 **Conflict of interest**

339 The authors declare that they have no conflicts of interest.

340

341 **Funding**

342 This research did not receive any specific grant from funding agencies in the public,
343 commercial, or nonprofit sectors.

344

345 **Acknowledgments**

346 We thank the clinical laboratory technicians at the Self-Defense Forces Central Hospital
347 for sample collection, and all members of the COVID-19 Task Force at the Self-Defense
348 Forces Central Hospital and participating members drawn from other institutes of the Japan
349 Self-Defense Forces.

350

351 **Authors' contributions**

352 TM and KI: study conception and design; MNI, KI, and ST: clinical data collection and
353 data analysis; SN, YK, and MM: experiment data analysis; MNI, KI, and TM manuscript
354 drafting and editing; SN, YK, MM, TI, and KK: manuscript revision; TI and KK study
355 supervision. All authors have read and approved the final manuscript.

356

357

358 **Figure Legends**

359 **Figure 1**

360 Seropositive rate of total and IgG antibody response in serum specimens collected
361 from mild and severe COVID-19 cases after symptom onset. Plot shows seropositive rate for
362 total and IgG antibody assays per total serum collected from symptom onset. Solid and
363 dashed lines indicate total and IgG antibody assays, respectively. Blue and red lines indicate
364 mild and severe cases, respectively. Ab, antibody.

365 **Figure 2**

366 Kinetics of total and IgG antibody response between mild and severe cases. Plots
367 show time to sample collection from symptom onset and signal for test sample/signal at cutoff
368 [S/CO] for total and IgG antibodies. (A) Total antibody, (B) IgG antibody. Blue and red lines
369 indicate regression curves of mild and severe cases, respectively. Ab, antibody.

370 **Figure 3**

371 Comparison between mild and severe cases of total and IgG antibody response for
372 total antibody (A-C) and IgG antibody (D-E) in serum specimens collected at different
373 timings from symptom onset. Correlation coefficient calculated using Wilcoxon's rank-sum
374 test. * $p < 0.05$, ** $p < 0.001$. Ab, antibody.

375

Table 1. Clinical characteristics of patients with COVID-19

	All patients (N=130)	Mild (n=98)	Severe (n=32)	p-value
Background characteristics				
Age (years)	45 [37-59]	44 [35-53]	62 [57-69]	< 0.001 **
Time from onset to admission (days)	8 [6-10]	8 [6-10]	8 [6-9]	0.327
Sex				0.002 *
Female	53 (40.8)	47 (48.0)	6 (18.8)	-
Male	77 (59.2)	51 (52.0)	26 (81.3)	-
Smoking history				0.411
Yes	61 (46.9)	43 (43.9)	18 (56.3)	-
No	69 (53.1)	55 (56.1)	14 (43.8)	-
Underlying diseases				
Total	66 (50.8)	39 (39.8)	27 (84.4)	< 0.001 **
Cardiovascular disease	9 (6.9)	6 (6.1)	3 (9.4)	0.688
Hypertension	23 (17.7)	10 (10.2)	13 (40.6)	< 0.001 **
Diabetes	5 (3.8)	1 (1.0)	4 (12.5)	0.013 *
Respiratory disorder	23 (17.7)	14 (14.3)	9 (28.1)	0.107
Malignancy	3 (2.3)	-	3 (9.4)	0.014 *
Clinical features on admission				
Fever	119 (91.5)	88 (89.8)	31 (96.9)	0.412
Cough	69 (53.1)	50 (51.0)	19 (59.4)	0.541
Malaise	39 (30.0)	32 (32.7)	7 (21.9)	0.371
Diarrhea	31 (23.8)	26 (26.5)	5 (15.6)	0.335
Headache	39 (30.0)	33 (33.7)	6 (18.8)	0.179
Dyspnea	15 (11.5)	-	15 (46.9)	-
Tachypnea	15 (11.5)	-	15 (46.9)	-
Laboratory findings on admission				
AST (IU/L)	30 [22-43]	27 [20-33]	55 [36-78]	< 0.001 **
ALT (IU/L)	31 [18-45]	27 [16-41]	39 [34-66]	< 0.001 **
LDH (IU/L)	231 [182-323]	208 [168-267]	376 [304-506]	< 0.001 **
Sodium concentration	139 [136-141]	140 [138-142]	136 [134-138]	< 0.001 **
C-reactive protein (mg/dL)	1.3 [0.2-4.6]	0.6 [0.1-2.3]	9.0 [4.6-13.9]	< 0.001 **

White blood cell count (/μL)	5,152 [3,808-6,440]	4,878 [3,692-6,112]	6,015 [3,354-8,355]	0.007*
Platelet count (×10 ⁴ /μL)	19.5 [15.7-26.6]	19.8 [15.9-26.7]	22.8 [15.5-23.8]	0.658
Lymphocyte count	1,054 [774-1447]	1,206 [896-1,692]	698 [501-875]	< 0.001**
Neutrophil/lymphocyte ratio	2.8 [1.8-4.7]	2.4 [1.4-3.5]	7.3 [3.8-11.6]	< 0.001**
Antibody tests on admission				
Total antibody, positive	76 (58.5)	60 (61.2)	16 (50.0)	0.304
Total antibody (S/CO)	3.71 [0.2-33.1]	4.25 [0.1-32.9]	1.90 [0.4-45.6]	0.152
IgG antibody, positive	45 (34.6)	34 (34.7)	11 (34.4)	1.000
IgG antibody (S/CO)	0.1 [0-3.1]	0 [0-3.6]	0.1 [0-2.5]	0.322
Treatment				
Antibiotics	16 (12.3)	-	16 (50.0)	-
Lopinavir/ritonavir	2 (1.5)	-	2 (6.3)	-
Favipiravir	11 (8.5)	2 (2.0)	9 (28.1)	-
Methylprednisolone	13 (10.0)	-	12 (37.5)	-
Anticoagulant drugs	12 (9.2)	-	12 (37.5)	-
Oxygen therapy	32 (23.6)	-	32 (100)	-
HFNC	14 (10.8)	-	14 (43.8)	-
NPPV	1 (0.8)	-	1 (3.1)	-
IMV	5 (3.8)	-	5 (15.6)	-
Outcome				
Recovery	126 (96.9)	98 (100)	28 (87.5)	-
Death	4 (3.1)	-	4 (12.5)	-

377 Data are presented as n (%), or median [interquartile range], unless otherwise specified.

378 * $p < 0.05$, ** $p < 0.001$.

379 AST, aspartate aminotransferase; ALT, alanine aminotransferase; LDH, lactate

380 dehydrogenase; S/CO, sample/signal at cutoff; HFNC, high-flow nasal cannula; NPPV,

381 noninvasive positive pressure ventilation; IMV, intermittent mandatory ventilation.

Table 2. Rate of positive total and IgG antibody assays on admission and discharge

		Positivity rate			S/CO		
		On admission	On discharge	<i>p</i> -value	On admission	On discharge	<i>p</i> -value
Total Ab	N = 91	54 (59.3%)	90 (98.9%)	< 0.001**	3.7 [0.1 - 33.1]	66.7 [32.3 - 124.3]	< 0.001**
	Mild = 65	39 (60.0%)	64 (98.5%)	< 0.001**	4.3 [9.1-32.9]	45.9 [19.1-108]	< 0.001**
	Severe = 26	15 (57.7%)	26 (100.0%)	< 0.001**	1.9 [0.4 - 30.0]	106.6 [60.8 - 172.5]	< 0.001**
	<i>p</i>-value	1.000	1.000		0.805	< 0.001**	
		Positive rate			S/CO		
		On admission	On discharge	<i>p</i> -value	On admission	On discharge	<i>p</i> -value
IgG Ab	Total = 91	34 (37.4%)	81 (89.0%)	< 0.001**	0.1 [0 - 3.1]	8.3 [3.4 - 10.8]	< 0.001**
	Mild = 65	24 (36.9%)	56 (86.2%)	< 0.001**	0.1 [0 - 3.6]	6.2 [2.1 - 5.9]	< 0.001**
	Severe = 26	10 (38.5%)	25 (96.2%)	< 0.001**	0.4 [0 - 2.3]	10.8 [8.7 - 12.6]	< 0.001**
	<i>p</i>-value	1.000	1.000		0.992	0.009*	

383 Data are presented as n (%) or median [interquartile range], unless otherwise specified.

384 Ab, antibody; S/CO, sample/signal at cutoff

385 * $p < 0.05$, ** $p < 0.001$.

386

Figure 1

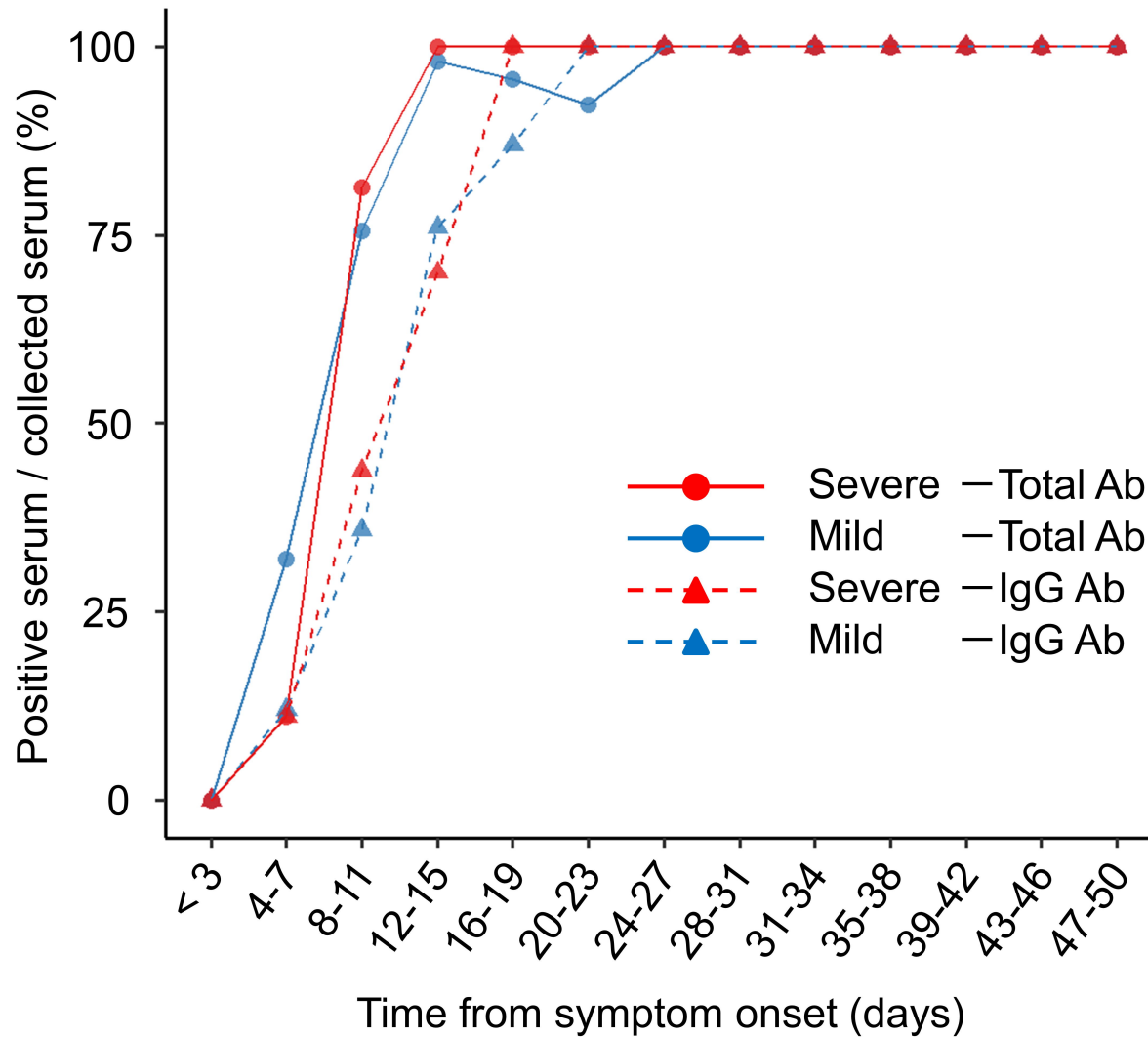


Figure 2

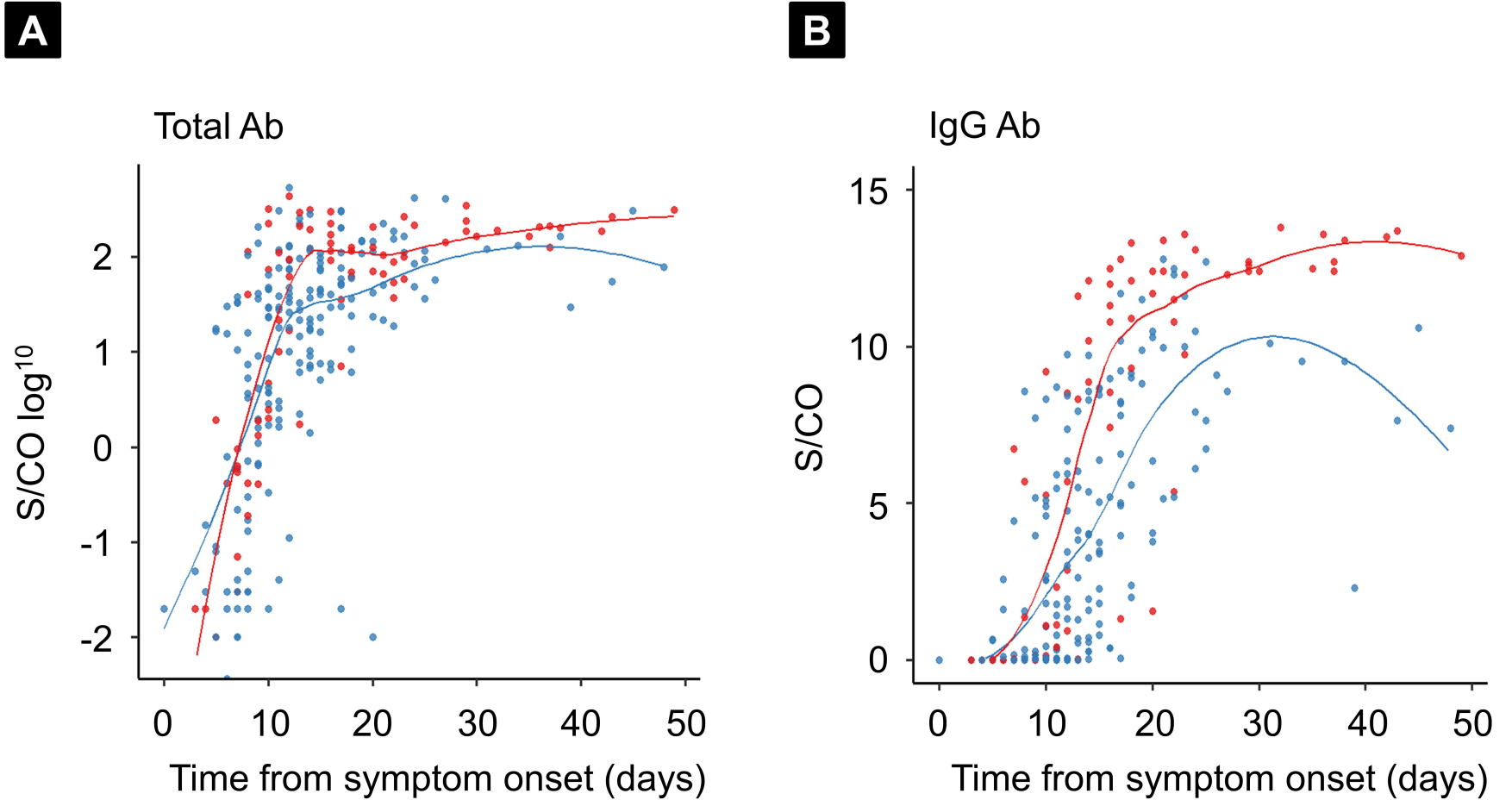
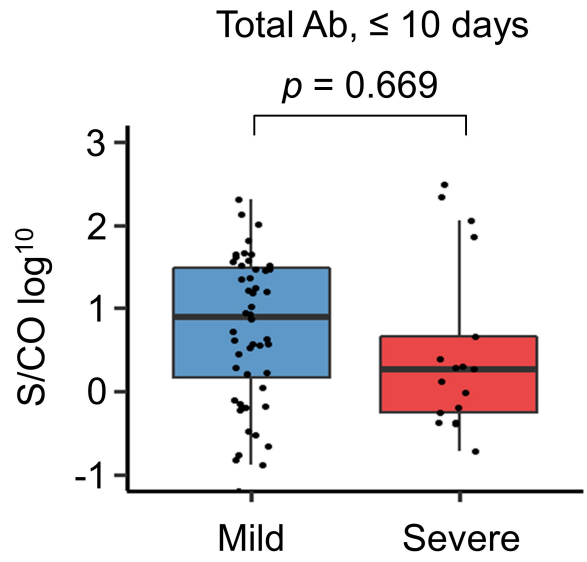
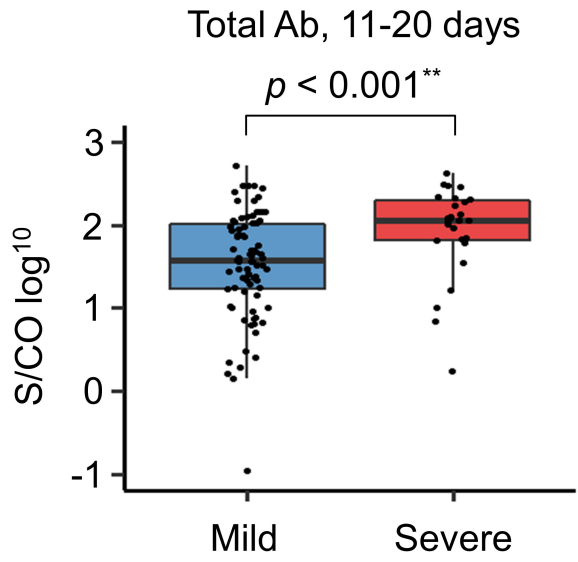


Figure 3

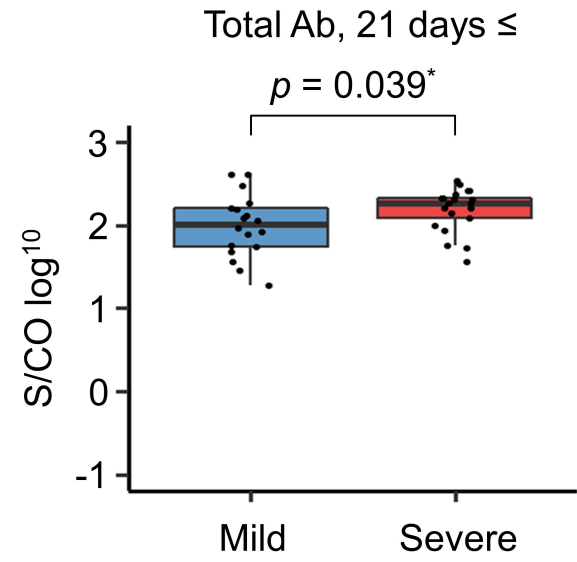
A



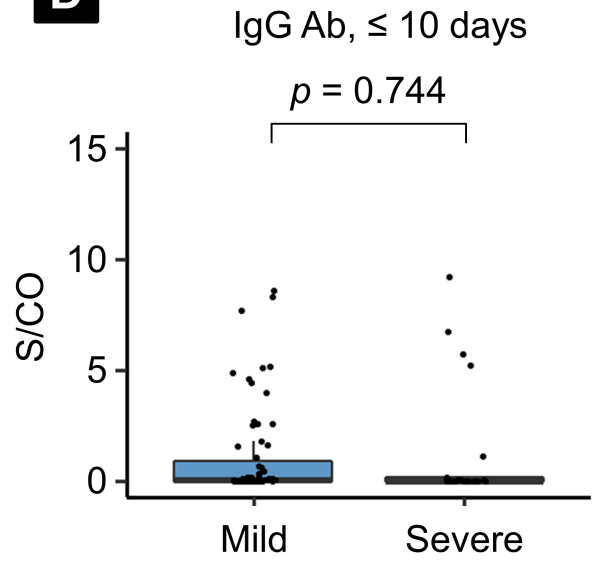
B



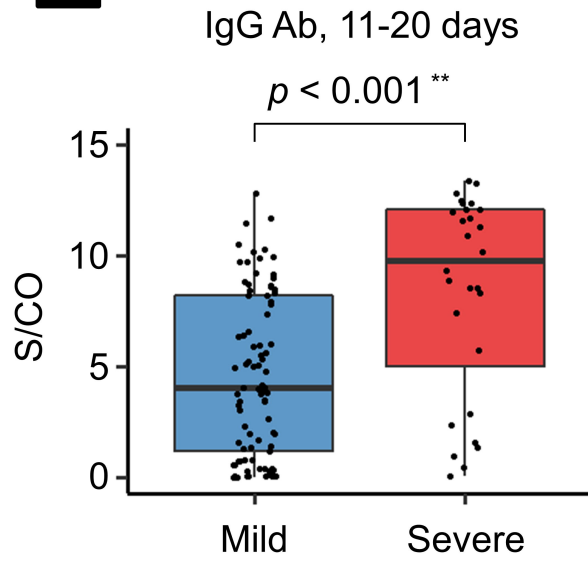
C



D



E



F

