

Loneliness, physical activity and mental health during Covid-19: a longitudinal analysis of depression and anxiety between 2015 and 2020.

Byron Creese, PhD, University of Exeter Medical School, College of Medicine and Health, UK

Zunera Khan, MSc, Department of Old Age Psychiatry, Institute of Psychiatry, Psychology and Neuroscience, King's College London, UK

William Henley, PhD, University of Exeter Medical School, College of Medicine and Health, UK

Siobhan O'Dwyer, PhD, University of Exeter Medical School, College of Medicine and Health, UK

Anne Corbett, PhD, University of Exeter Medical School, College of Medicine and Health, UK

Miguel Vasconcelos Da Silva, Department of Old Age Psychiatry, Institute of Psychiatry, Psychology and Neuroscience, King's College London, UK

Kathryn Mills, University of Exeter Medical School, College of Medicine and Health, UK

Natalie Wright, MBBS, Global Public Health, Public Health England, London, SE1 8UG, UK

Ingelin Testad, PhD, Centre for Age-related Medicine - SESAM, Stavanger University Hospital, Stavanger, Norway

Dag Aarsland, MD, Department of Old Age Psychiatry, Institute of Psychiatry, Psychology and Neuroscience, King's College London, UK

Clive Ballard, MD, University of Exeter Medical School, College of Medicine and Health, UK

Corresponding author: Byron Creese, PhD: b.creese@exeter.ac.uk, Tel: +44 (0)1392 724837

Research in Context

Evidence before this study

PubMed and Google Scholar were searched using the terms “COVID*” OR “coronavirus*” AND “depress*” OR “anxi*” OR “mental health” OR “lonel*” OR “physical activity” OR “exercise”. The major focus of existing longitudinal studies of mental health was demographic and socioeconomic characteristics. No studies were found which focused on loneliness or physical activity in the context of the pandemic which also had longitudinal data prior to the pandemic.

Added value of this study

To our knowledge we present the first longitudinal analysis of the impact of loneliness and decreased physical activity on mental health during the pandemic with specific estimates generated which account for existing trends prior to 2020. We found that the pandemic exacerbated existing relationships between loneliness, physical activity and mental health, we also replicate previous research showing that women and retired people’s mental health has worsened to a greater extent than men and those not in retirement respectively.

Implications of all the available evidence

Both loneliness and physical activity are potentially modifiable risk factors. Loneliness was already a major concern before the pandemic and this evidence provides a clear rationale to undertake further research into its feasibility as a target to mitigate deterioration in mental health during the pandemic. There are a number of initiatives, including resilience building and befriending, which could be potential candidates. Similarly exercise has been pushed to the forefront of policy due to the links between obesity and risk of severe physical illness from coronavirus. Our research underscores the potential added benefits on mental health of maintaining physical activity specifically during the pandemic.

Background

Loneliness and physical activity are important targets for research into the impact of COVID-19 because they have established links with mental health, could be exacerbated by social distancing policies and are potentially modifiable.

Methods

We analysed mental health data collected during COVID-19 from adults aged 50 and over alongside comparable annual data collected between 2015 and 2019 from the same sample. Trajectories of depression (PHQ-9) and anxiety (GAD-7) were analysed with respect to loneliness, physical activity levels and a number of socioeconomic and demographic characteristics using zero-inflated negative binomial regression.

Findings

3,281 people completed the COVID-19 mental health questionnaire, all had at least one data point prior to 2020. In 2020, the adjusted PHQ-9 score for loneliness was 3.2. (95% CI: 3.0-3.4), an increase of one point on previous years and 2 points higher than people not rated lonely, whose score did not change in 2020 (1.2, 95% CI: 1.1-1.3). PHQ-9 was 2.6 (95% CI: 2.4-2.8) in people with decreased physical activity, an increase of 0.5 on previous years. In contrast, PHQ-9 in 2020 for people whose physical activity had not decreased was 1.7 (95% CI: 1.6-1.8), similar to previous years. A similar relationship was observed for GAD-7 though the differences were smaller and the absolute burden of symptoms lower.

Interpretation

After accounting for pre-COVID-19 trends, we show that experiencing loneliness and decreased physical activity are risk factors for worsening mental health during the pandemic. Our findings highlight the need to examine policies which target these potentially modifiable risk factors.

Funding

This paper represents independent research part funded by the National Institute for Health Research (NIHR) Biomedical Research Centre at South London and Maudsley NHS Foundation Trust and King's College London. This research was also supported by the NIHR Collaboration for Leadership in Applied Health Research and Care South West Peninsula. Additional funding for the COVID-19 mental health questionnaire was provided by King's College London and Stavanger University Hospital.

Introduction

In order to contain and reduce the spread of COVID-19, the UK government introduced lockdown measures on 23rd March 2020 which restricted time permitted outside and all non-essential in-person contact. Those with certain high risk medical conditions were advised to 'shield' (i.e. not leave the house for 12 weeks) and those aged 70 and over were advised to strictly adhere to the restrictions. The potential mental health impacts of this have been highlighted in a number of high profile commentaries, with possible mechanisms including the pressures of lockdown, anxieties about infection and the knock-on economic consequences (1–7). Previous research into mental health in the pandemic has largely focused on socioeconomic, demographic and clinical comorbidities, with younger age, female gender and low socioeconomic status being consistently associated with higher risk (8–11). While these links are undoubtedly important, research must also focus on potentially modifiable risk factors.

Loneliness and physical activity are critical mediators of mental health and therefore warrant close consideration during the pandemic (5,12,13). It is likely that the pandemic will lead to low activity levels and exacerbate loneliness in some (for example through social distancing and movement restrictions) and as such they may represent modifiable targets for resilience and management programmes. Longitudinal data covering the pre-pandemic and pandemic period is needed to address this key question. A comparison of survey data between 2018 and 2020 in the USA found a modest increase in loneliness but no links were drawn between the interactions with the pandemic on mental health levels (11). One cross sectional study linked loneliness with worse mental health and a second study indicated that people with low social support (a possible proxy for loneliness) had a more severe trajectory of depression during the pandemic (8,14). However without data prior to 2020, it is impossible to evaluate fully the specific importance of these factors during the pandemic. Though highlighted as important in commentaries, there has been little research into the links between physical activity and mental health during the pandemic; to our knowledge, the only published study used a cross sectional design (15).

To address the gap in research around the impact of loneliness and physical activity on mental health during COVID-19 we analysed data from 3,281 participants, all of whom had mental health data available from before the pandemic. We hypothesized that trajectories of depressive and anxiety symptoms in people who were lonely and whose physical activity had decreased during the pandemic would be adversely affected. In addition, we also examined a number of other demographic and socioeconomic variables on mental health trajectories.

Methods

Study design and setting

The study was conducted with participants from the PROTECT study. PROTECT is a longitudinal study of mental and cognitive health with annual assessment in people over the age of 50 which was launched in November 2015 (<http://www.protectstudy.org.uk/>) (16). There are currently over 25,000 people enrolled in PROTECT. Informed consent is taken electronically

In May 2020, around 4.5 years after PROTECT started, a specific COVID-19 mental health questionnaire was launched in PROTECT, again completed online. Here we present an analysis of data collected between 13th May and 8th June 2020, combined with existing data from previous years.

The PROTECT study received ethical approval from the UK London Bridge National Research Ethics Committee (Ref: 13/LO/1578) and the COVID-19 mental health questionnaire was approved by the same committee (as an amendment) on 6th April 2020.

Participants

The PROTECT cohort includes people aged 50 or over at enrolment living in the UK. Additional inclusion criteria are: access to a computer and internet, able to read and write English and no diagnosis of dementia. All participants who opted in to study communications were invited to complete the COVID-19 mental health questionnaire.

Variables

PROTECT pre-pandemic data collection 2015-2019

Before the pandemic, all participants completed a series of online self-report questionnaires, which included demographic information (date of birth, gender, highest level of education [left school at 16, left school at 18, undergraduate degree, post-graduate degree], employment status [full time, part-time, self-employed, retired, unemployed] and marital status [married/civil partnership/co-habiting, widowed/divorced/separated, single], history of psychiatric illness). In addition, mental health assessments were completed annually prior to the pandemic as well as in 2020.

Depression was assessed with the PHQ-9, a 9 item questionnaire which assesses the frequency of depressive symptoms over a two week window (17). Each item is rated on a 4 point scale (0=not at all; 1=several days; 2=more than half the days; 3= nearly every day). Anxiety was assessed with the GAD-7, a 7 item questionnaire assessing the frequency of anxiety symptoms over a two week window (18). The ratings are the same as PHQ-9. For both scales, a threshold of 5 or above is indicative of mild and 10 or above is indicative of moderate or severe symptoms.

Participants completed up to four annual assessments spread over 5 years between 2015 and 2019 (depending on enrolment date). Enrolment to PROTECT is open continuously and started with a national publicity drive in October and November 2015, as a result the majority of current participants enrolled in those two months. For those who completed the COVID-19 mental health questionnaire this figure was 1,930 (59%). After the initial wave of enrolment, 405, 382, 338 and 18 enrolled in 2016, and in 2017, 2018 and 2019 respectively. Thus, most completed annual assessments between October and January of each year. PROTECT pre-pandemic data was available from a data-freeze in early October 2019.

Mental health during COVID-19 May 13th-June 8th 2020.

Symptoms of COVID-19 infection. Participants were asked whether they had any of the main symptoms of COVID-19 in the last two weeks (which at the time were a new persistent cough for more than 24 hours or a high temperature) or if they had been hospitalized with COVID-19 in the last four weeks.

Physical activity changes. Participants were asked about changes in their physical activity since March 2020. The data were categorised to identify people who reported a decrease in their level of physical activity and those who did not.

Physical illnesses. Participants were asked if they had any of the following conditions associated with moderately increased risk of severe illness from coronavirus: long-term respiratory illness, chronic heart disease, chronic kidney disease, liver disease, neurological disease, diabetes, illness affecting the spleen, weakened immune system or $BMI \geq 40$. They were also asked if they had any of the following conditions which would require them to shield (high risk of severe illness from coronavirus): received an organ transplant and remain on ongoing immunosuppression medication, undergoing active chemotherapy or radiotherapy, cancer of the blood or bone marrow who are at any stage of treatment, severe chest conditions such as cystic fibrosis or severe asthma (requiring hospital admissions or course of steroid tablets), severe diseases of body systems. People were also asked if they had received a letter advising them to shield and if they answered yes they were included in the high risk group. These physical conditions were coded 0 (no relevant conditions); 1 (moderate risk conditions) and 2 (high risk conditions).

Loneliness. Loneliness was assessed using the three item UCLA loneliness scale (19). The questions ask how often the participant has felt lack of companionship, left out and isolated from others with the possible answers being 'hardly ever', 'some of the time' and 'often.' Loneliness was treated as binary for this analysis, dichotomized into those experiencing any loneliness (i.e. rating at least 'some of the time' on any question) and those experiencing none.

Finances. Participants were asked to respond yes or no the question "Has the COVID-19 (coronavirus) had had a negative impact on your finances?"

Statistical methods

The statistical analyses were carried out in two stages.

In the full cohort we first undertook a case level analysis of PHQ-9 and GAD-7 rated in 2020 during the pandemic, categorizing both into a three level factor (see above for cut offs) representing no, mild and moderate-to-severe symptoms. Differences in the proportions of current depression and anxiety levels by risk factor were analysed using the chi-square test. We then undertook descriptive analysis of the change in case level proportions between 2019 and 2020.

For the second and principal analysis, we examined trajectories of PHQ-9 and GAD-7 between October 2015 (the start of the PROTECT study) and 8th June 2020. Initial analysis of PHQ-9 and GAD-7 total scores using linear mixed effects models showed evidence of departure from the assumption of normally distributed residuals (see supplement). This could not be rectified by transformations and instead we considered models for counts of symptoms. A zero-inflated negative binomial regression (ZINB) was chosen for each scale due to over-dispersion and evidence of excess zeros. Zero inflated models use a mixture model approach in which the population is assumed to consist of an at-risk subgroup, and a sub-group not at risk for PHQ-9 and GAD-7 symptoms during the study period (the source of the excess zeros). The model is comprised of two components: the first accounts for the distribution of symptoms in the at-risk population (negative binomial component), the

second is a logit model accounting for factors associated with membership of the non-risk sub-population (zero-inflated component). A random intercept term was included to allow for correlations between repeated measurements on the same individual. The Vuong test statistic was used to compare the fit of zero-inflated models with single-equation Poisson and negative binomial models.

Univariate models were run for both PHQ-9 and GAD-7 for loneliness and physical activity, as well as the following socioeconomic variables: age group (under 70 and 70 and over), gender, psychiatric diagnosis history, education level, employment status, marital status, negative financial impact of the pandemic, risk medical condition. Education, employment status and marital status were all dummy coded. A linear and quadratic term for time since study start and a 2020 indicator variable was added to estimate the effect of the pandemic on PHQ-9 and GAD-7 scores after removing any background trend in previous years. Zero-inflated models did not include an interaction term with 2020 (models were not significantly improved by including an interaction term). Therefore the zero-inflated component does not tell us anything specific about the effect of 2020 so for simplicity they are not reported here. Incidence rate ratios were calculated to illustrate the incremental effect on PHQ-9/GAD-7 scores of each risk factor in 2020 relative those without the risk factor.

All statistically significant variables were included in a final adjusted model to assess independent effects. Predicted values from the adjusted final model were obtained and plotted for year 0 (study start, October 2015), 1 year, 2 years, 3 years after study start, and during the pandemic (i.e. ~4.5 years after study start).

Of the 3,281 people who completed the COVID-19 mental health questionnaire in 2020, 2,238 had four previous data points; 566 had 3; 415 had 2; and 62 had 1 (

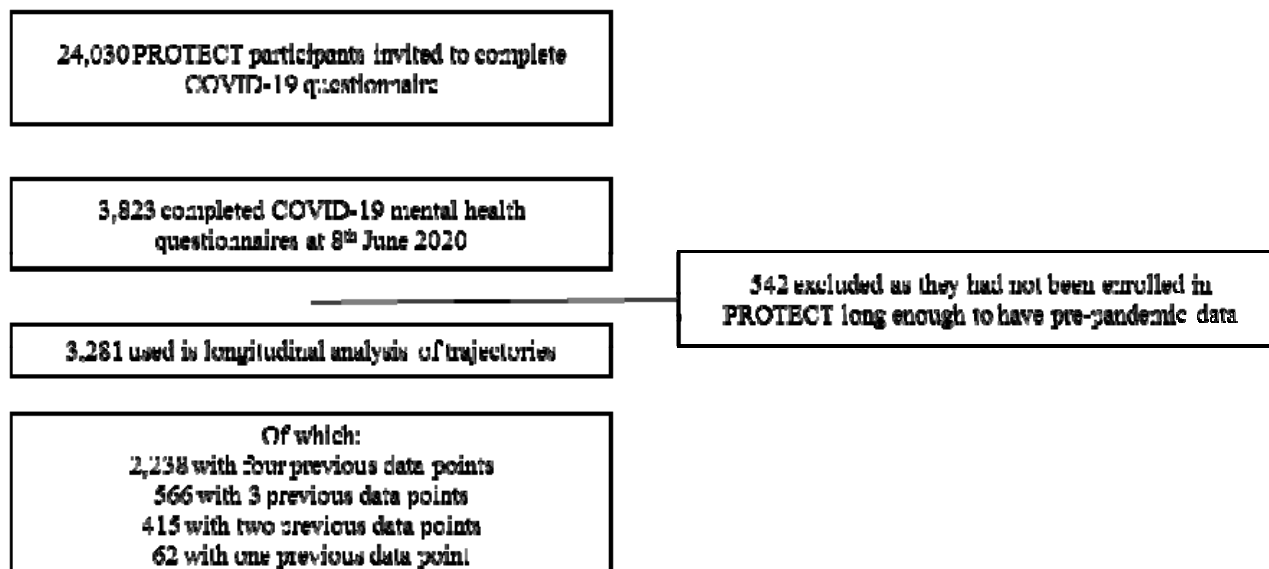
Figure 1). The distribution of assessment by month in each year is shown in the supplement.

Statistical analysis was undertaken in the R software environment for statistical computing. Longitudinal zero-inflated negative binomial regression models were fitted using the package `glmmTMB` (<https://github.com/glmmTMB/glmmTMB>).

Role of the funding source

The funder had no role in any part of the project. The corresponding author had full access had full access to all the data in the study and had final responsibility for the decision to submit for publication.

Figure 1 Selection flow chart



Results

Participants

In total, 3,281 people completed the COVID-19 mental health questionnaire, 542 of these either joined PROTECT in May/June 2020 specifically to do the COVID-19 element or they joined PROTECT after the October 2019 data freeze so no pre-pandemic data available for this analysis. These were excluded but there were no major differences in characteristics between the 3,821 used in this analysis and the 542 excluded (see supplement). The characteristics of the sample analysed are described in Table 1. The mean age in 2020 was 67 (standard deviation 6.5, range 55-96), around one third had an undergraduate level education and 80% were female. These figures are similar to the wider 25,000 PROTECT study sample (16). Twenty-six (0.7%) people reported having a new continuous cough or high temperature in the last two weeks, a similar proportion (1%) reported a family member with these symptoms. One person in the sample had been hospitalized with COVID-19 in the last four weeks.

Table 1 Demographics characteristics for the whole sample

	Total	%
Age Group		
70 and Over	1,001	30
Under 70	2,280	70
Gender		
Female	2,610	80
Male	671	20
Marital Status		
Married/ Civil Partnership/Co-habiting	2,421	74
Widow/Separated /Divorce	615	19
Single	245	7
Education		
School to 16	400	12

16 to 18	1,006	31
Undergrad	1,142	35
Post-grad	733	22
Employment		
Employed (full-time)	509	16
Employed (part-time)	569	17
Self-employed	280	9
Retired	1,847	56
Unemployed	76	2
Lifetime history of any psychiatric illness		
No	2,134	65
Yes	1,147	35

Risk factors and trajectories

Case level analysis

We first compared case level differences in 2019 with 2020. Overall case level estimates for moderate-to-severe symptoms were comparable across the two years. One hundred and eighty-five (5.6%, 95% CI: 4.9-6.4) and 89 (2.7% 95% CI: 2.2-3.3) of 3,281 people in 2020 had a PHQ-9 score ≥ 10 and a GAD-7 score ≥ 10 respectively. This compared with 124 (4.1%, 95% CI: 3.5-5) and 66 (2.2%, 95% CI: 1.8-2.8) respectively with moderate-to-severe symptoms in 2019 (n=2,959). There was a more pronounced difference in mild symptoms. In 2020 634 (19%, 95% CI: 18-20.7) has mild depressive symptoms compared with 392 (13.2%, 95% CI: 12.1-14.5) in 2018. Similarly, 415 people had mild anxiety symptoms in 2020 (12.6%, 95% CI: 11.6-13.8), compared with 276 in 2019 (9.3%, 95% CI: 8.3-10.4).

During the pandemic, loneliness, decreased activity levels and reporting a negative financial impact were all associated with higher proportions of mild and moderated-to-severe depressive and anxiety symptoms (**Error! Not a valid bookmark self-reference.**). Being under 70 and female were also both associated with higher proportions of mild and moderate-to-severe depressive and anxious symptoms. For depression, besides having a history of a psychiatric condition the most pronounced difference was for loneliness: 29 and 10% of people rated lonely had moderate and severe symptoms respectively, compared with 10 and 1% of people not rated as lonely ($X^2=339.24$, $df=2$, $p<0.0001$). Anxiety symptoms were generally less prevalent but again the largest difference in proportions was associated with loneliness: 19 and 5% of people rated lonely had mild and moderate-to-severe symptoms respectively, compared with 6 and 1% of people not rated as lonely ($X^2=192.45$, $df=2$, $p<0.0001$). Among the demographic and socioeconomic variables, being a woman, aged under 70, not being married/in a civil partnership or co-habiting and being unemployed were all associated with higher depressive symptoms. The same was found for anxiety, with the exception of marital status where there was no association (Table 2).

Table 2 Risk factors by depression and anxiety case status in the whole sample during pandemic (N=3,281)

	Depressive symptoms during pandemic (n, %)								Anxiety symptoms during pandemic (n, %)							
	None		Mild		Moderate to Severe		Total	p	None		Mild		Moderate to Severe		Total	p
Loneliness No	1476	88	174	10	20	1	1670	<0.0001	1554	93	107	6	9	1	1670	<0.0001
Loneliness Yes	986	61	460	29	165	10	1611		1223	76	308	19	80	5	1611	
Activity Levels Same	1705	81	344	16	68	3	2117	<0.0001	1855	88	225	11	37	2	2117	<0.0001
Activity Levels Decreased	757	65	290	25	117	10	1164		922	79	190	16	52	4	1164	
No Negative Financial Impact	1972	77	470	18	122	5	2564	<0.0001	2209	86	295	12	60	2	2564	<0.0001
Negative Financial Impact	490	68	164	23	63	9	717		568	79	120	17	29	4	717	
No Risk Conditions	1960	76	489	19	118	5	2567	<0.0001	2187	85	327	13	53	2	2567	<0.0001
Moderate Risk Conditions	447	70	130	20	62	10	639		527	82	79	12	33	5	639	
High Risk Conditions	55	73	15	20	5	7	75		63	84	9	12	3	4	75	
Female	1908	73	544	21	158	6	2610	<0.0001	871	87	108	11	22	2	1001	0.04
Male	554	83	90	13	27	4	671		1906	84	307	13	67	3	2280	
70 and over	788	79	169	17	44	4	1001	0.004	2161	83	367	14	82	3	2610	<0.0001
Under 70	1674	73	465	20	141	6	2280		616	92	48	7	7	1	671	
Married/ Civil Partnership/Co-habiting	1863	77	439	18	119	5	2421	<0.0001	2053	85	300	12	68	3	2421	0.48
Widow/Separated /Divorce	432	70	131	21	52	8	615		510	83	89	14	16	3	615	
Single	167	68	64	26	14	6	245		214	87	26	11	5	2	245	
School to 16	299	75	72	18	29	7	400	0.17	341	85	49	12	10	3	400	0.59
16 to 18	738	73	201	20	67	7	1006		847	84	133	13	26	3	1006	
Undergrad	864	76	221	19	57	5	1142		971	85	139	12	32	3	1142	
Post-grad	449	75	121	20	28	5	598		496	83	85	14	17	3	598	
Doctorate	112	83	19	14	4	3	135		122	90	9	7	4	3	135	
Employed (full-time)	380	75	100	20	29	6	509	<0.0001	428	84	68	13	13	3	509	<0.0001
Employed (part-time)	411	72	124	22	34	6	569		463	81	88	15	18	3	569	
Self-employed	215	77	51	18	14	5	280		235	84	42	15	3	1	280	
Retired	1419	77	331	18	97	5	1847		1597	86	201	11	49	3	1847	
Unemployed	37	49	28	37	11	14	76		54	71	16	21	6	8	76	

No history of psychiatric condition	1774	83	307	14	53	2	2134	<0.0001		1933	91	184	9	17	1	2137	<0.0001
History of psychiatric condition	688	60	327	29	132	12	1147			844	74	231	20	72	6	1147	

Trajectories of PHQ-9 and GAD-7 scores

The results from the univariate analysis are shown in Table 3. Loneliness, decreased physical activity, being a woman and being retired were all associated with significant worsening of depressive symptoms in 2020. Similarly loneliness, decreased physical activity and being a woman were also associated with worsening GAD-7 scores in 2020. Not being in full time employment and not having a history of a psychiatric condition were associated with a relative worsening of GAD-7 score. However the absolute GAD-7 score for people with a psychiatric diagnosis was consistently higher throughout the entire study period.

For the final adjusted model of PHQ-9 trajectory, loneliness, activity level, gender and retirement status were all included as covariates and for the GAD-7 adjusted model, loneliness, physical activity, gender, full time employment status and history of psychiatric condition were included as covariates.

Table 3 Univariate negative binomial regression component of ZINB models of PHQ-9 and GAD-7 trajectories. Regression coefficients represent the effect of 2020 on scores adjusted for background trends in previous years.

	PHQ-9				GAD-7			
	IRR	L 95% CI	U 95% CI	P	IRR	L 95% CI	U 95% CI	P
Loneliness								
Loneliness	1.3	1.2	1.4	<0.0001	1.0	1.4	1.3	<0.0001
Activity Level Change								
Decreased activity	1.2	1.1	1.3	<0.0001	1.0	1.2	1.1	<0.0001
Negative financial impact								
Negative financial impact	1.1	1.0	1.2	0.1	1.0	1.1	1.0	0.11
Risk medical conditions								
Moderate risk conditions	0.9	0.9	1.0	0.1	1.0	1.0	0.9	0.98
High risk conditions	1.1	0.9	1.3	0.3	1.0	1.2	0.9	0.19
Age Group								
Under 70	1.0	0.9	1.0	0.1	1.0	1.0	0.9	0.53
Gender								
Women	1.1	1.1	1.2	0.0	1.0	1.2	1.1	0
Psychiatric history								
History of psychiatric condition	1.0	0.9	1.0	0.2	1.0	0.9	0.8	0.03
Education								
School to 16	1.0	0.9	1.1	0.6	1.0	0.9	0.8	0.26
16 to 18	1.0	0.9	1.1	0.7	1.0	1.0	0.9	0.94
Undergraduate	1.0	0.9	1.1	0.7	1.0	1.0	0.9	0.78
Post-graduate	1.1	1.0	1.1	0.2	1.0	1.1	1.0	0.22
Employment								
Employed (full-time)	0.9	0.9	1.0	0.1	1.0	0.9	0.8	0.02
Employed (part-time)	1.0	0.9	1.1	0.7	1.0	1.0	0.9	0.47
Self-employed	0.9	0.8	1.0	0.1	1.0	0.9	0.8	0.42
Retired	1.1	1.0	1.2	0.0	1.0	1.1	1.0	0.08

Unemployed	0.9	0.7	1.0	0.1	1.0	1.0	0.8	0.81
Marital status								
Married/Civil Partnership/Co-habiting	1.0	0.9	1.1	0.9	1.0	1.0	1.0	0.36
Widow/Separated /Divorce	1.1	1.0	1.2	0.2	1.0	1.1	1.0	0.16
Single	1.0	0.8	1.3	0.8	1.0	0.9	0.7	0.7

ZINB: zero-inflated negative binomial regression; IRR: incidence rate ratio

Results from the adjusted models are shown in Table 4 and predicted adjusted PHQ-9 and GAD-7 scores for each time point are provided in full in the supplement, plots of these predicted values for loneliness and physical activity are shown in Figure 2 and Figure 3.

Loneliness:

Loneliness was associated with a 30% increase in PHQ-9 score in 2020, relative to the not lonely group (IRR=1.3, 95% CI: 1.2-1.4, p<0.0001). Prior to 2020 people rated as lonely scored approximately one point higher than those rated not lonely (Figure 2). In 2020 (4.5 years after study start), however the difference between the two groups was ~2 points, with PHQ-9 score increasing to 3.2 (95% CI: 3.0-3.4) among those who reported loneliness and remaining stable (1.2, 95% CI: 1.1-1.3) for those not reporting loneliness. In other words, about 50% of the difference in PHQ-9 score between loneliness and no loneliness during the pandemic was accounted for by the general higher burden of symptoms associated with being lonely. For context, this means that in 2020 people who were lonely reported either a new PHQ-9 symptom for several days of the last two weeks or a worsening of an existing symptom to more than half the days in the last two weeks.

For GAD-7, symptoms were 20% worse in those who rated as lonely (IRR=1.2, 95% CI: 1.1-1.4, p<0.0001). Among those with no loneliness, GAD-7 total score was 0.5 across all years (Figure 3). For those with loneliness, GAD-7 score was 0.5 higher (~1) in years prior to 2020 but in 2020 the score increased to 1.6 (95% CI: 1.5-1.7). Again, the pandemic accounted for around 50% of the difference in GAD-7 scores attributable to loneliness in 2020.

Physical activity:

Decreased physical activity during the pandemic was associated with 20% PHQ-9 and GAD-7 symptoms during 2020 (IRR=1.2, 95% CI: 1.1-1.2, p<0.0001 and IRR=1.2, 95% CI: 1.1-1.3, p<0.0001 respectively). The general trajectory of PHQ-9 and the difference in scores between those reporting a decreased in physical activity, and those not, was similar to loneliness, although the difference was smaller (Figure 2). That is, there was around a 0.5 point difference in the years prior to 2020 and 1 point difference in 2020 (decreased physical activity: 2.6, 95% CI: 2.4-2.8, no decrease: 1.7, 95% CI: 1.6-1.8). Similar to loneliness again, GAD-7 score was modestly higher for people with decreased physical activity in the years prior to 2020 (Figure 3). However in 2020, GAD-7 score increased to 1.2 (95% CI 1.1-1.3) among those reporting decreased physical activity, which compares with 0.9 for those with no decrease in physical activity (95% CI: 0.8-0.9).

Gender, employment status and psychiatric history:

Being a woman and being retired were both also associated with worsening PHQ-9 symptoms during 2020 (IRR=1.1, 95% CI: 1.0-1.2, p=0.004; IRR=1.1, 95% CI: 1.0-1.2, p=0.001). Similarly, being a woman was also

associated with worse GAD-7 scores in 2020 (IRR=1.2, 95% CI: 1.0-1.3, p=0.03). Having a history of a psychiatric condition was associated with a relatively lower score in 2020 (IRR=0.8, 95% CI: 0.8 - 0.9, p=0.0002). However, this was driven by an increase in mental health symptoms in those with a history of psychiatric diagnosis. The absolute levels GAD-7 score for people with a psychiatric history remained higher in 2020 than those without (1.44 [95% CI: 1.3-1.59] vs 0.69 [95% CI: 0.63-0.75], see supplement). The association between full time employment and improved mental health identified in the univariate analysis did not hold in the adjusted analysis (Table 4).

Table 4 Adjusted negative binomial regression component of ZINB models of PHQ-9 and GAD-7. Regression coefficients represent the effect of 2020 on scores adjusted for background trends in previous years.

Risk factor	PHQ-9			
	IRR	L 95% CI	U 95% CI	P
Loneliness	1.3	1.2	1.4	<0.0001
Activity level decreased	1.2	1.1	1.2	<0.0001
Women	1.1	1.0	1.2	0.004
Retired	1.1	1.0	1.2	0.001
Risk factor	GAD-7			
	IRR	L 95% CI	U 95% CI	P
Loneliness	1.2	1.1	1.4	<0.0001
Activity level decreased	1.2	1.1	1.3	0.001
Women	1.2	1.0	1.3	0.03
Full time employed	0.9	0.8	1.0	0.15
History of psychiatric condition	0.8	0.8	0.9	0.0002

ZINB: zero-inflated negative binomial regression; IRR: incidence risk ratio

Figure 2 Trajectories of predicted PHQ-9 scores from zero-inflated negative binomial regression models for loneliness and physical activity (scores are adjusted for gender and retirement)

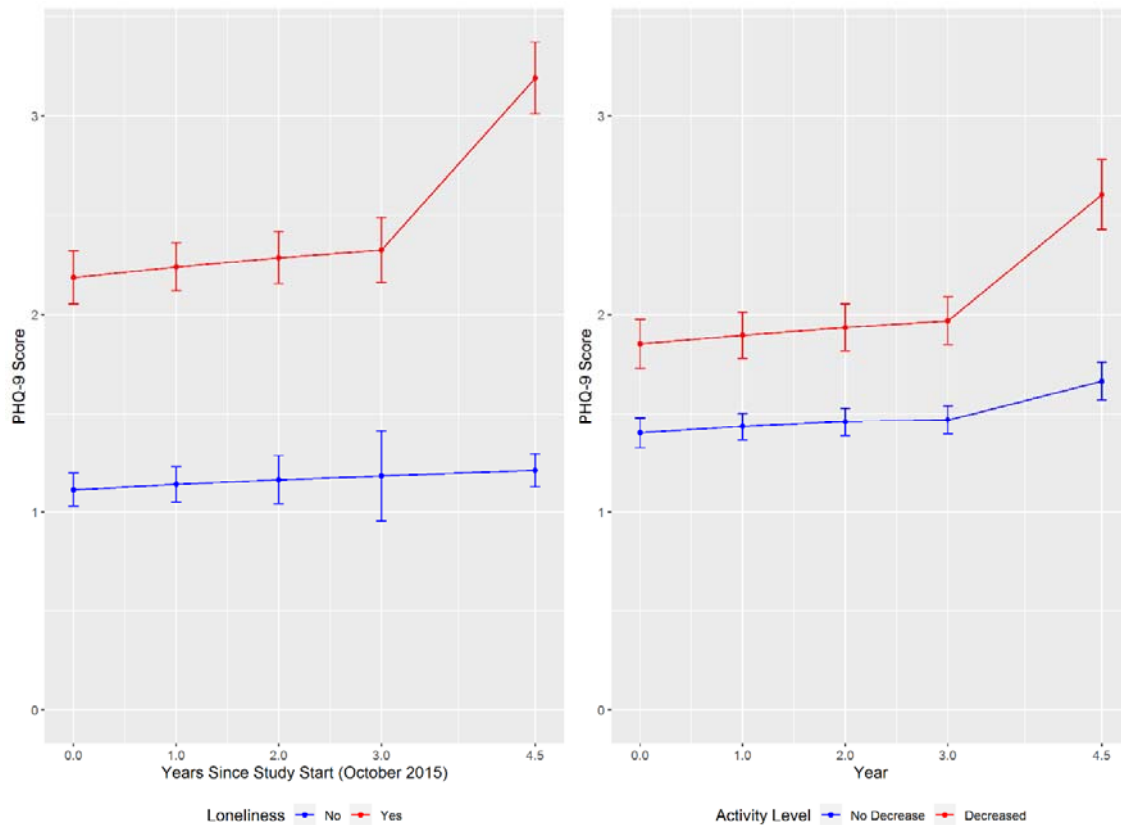
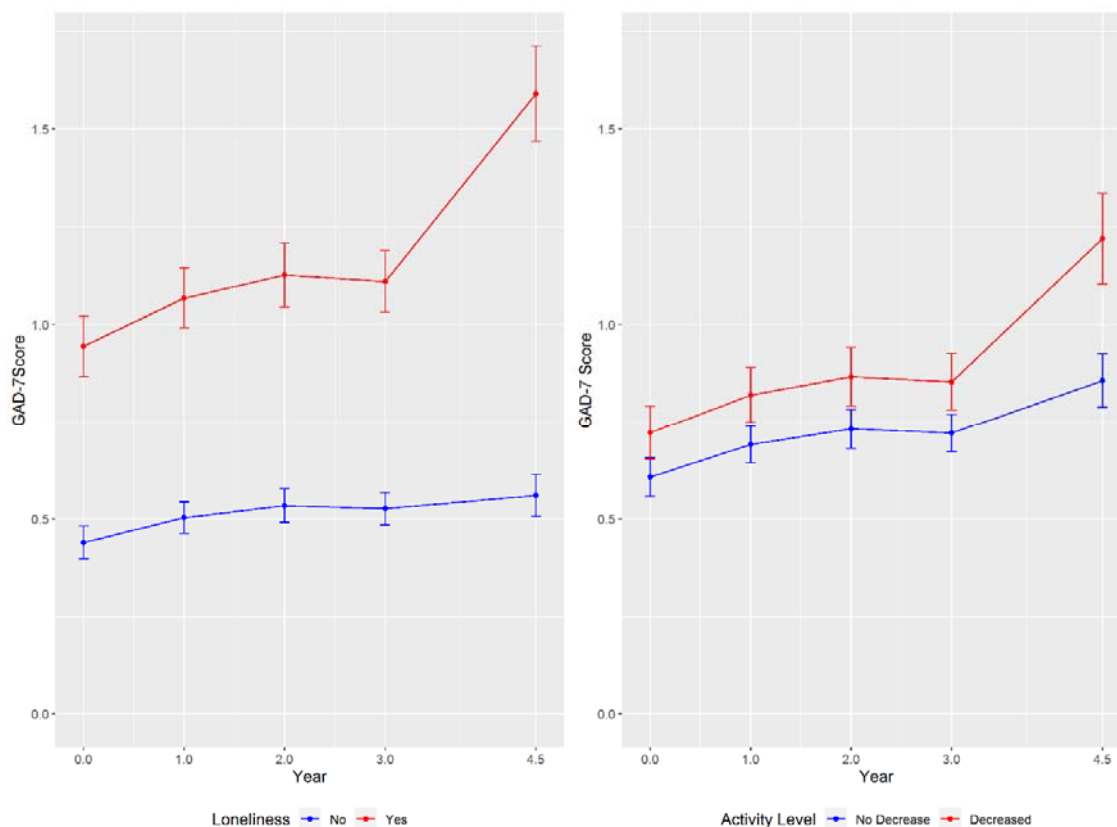


Figure 3 Trajectories of predicted GAD-7 scores from zero-inflated negative binomial regression models for loneliness and physical activity (scores are adjusted for gender, full-time employment and psychiatric history)



Discussion

This is the first longitudinal study to focus specifically on the links between loneliness, physical activity and mental health during the COVID-19 pandemic with longitudinal data pertaining to pre-pandemic mental health. Overall, in a cohort aged between 55 and 96, there was an increase in the proportion of people with mild depressive symptoms from 13.2% in 2019 to 19% in 2020 and an increase in the proportion of people with mild anxiety symptoms (from 9.3% to 12.6%). Proportions of people with moderate-to-severe symptoms were comparable. Longitudinally, both loneliness and decreased physical activity were associated with worse mental health in 2020 compared to previous years, suggesting a significant impact of the pandemic on both symptoms. Our data also show that the impact of the pandemic on mental health would be overestimated without the longitudinal perspective, bringing new insight to these established mental health risk factors and in line with recent findings related to other risk factors (20).

Around half of the sample reported some degree of loneliness during the pandemic. Between 2015 and 2019 loneliness was associated with a 1 point higher score on the PHQ-9 compared to people who did not report loneliness, but this difference doubled to 2 points during the current pandemic. In contrast, there was no worsening of mental health symptoms for people who did not report loneliness. Over one third of the sample reported decreased physical activity during the pandemic. The effect on PHQ-9 scores was more modest than that of

loneliness but was nevertheless associated with a worsening of symptoms during the pandemic. There were also statistically significant increases in GAD-7 scores for both loneliness and decreased physical activity though the differences were smaller than for PHQ-9 scores. Collectively, these findings emphasise the potential impact of finding novel solutions to tackle loneliness and decreased physical activity during the pandemic and underscore the important general relationship between the two and mental health (13,14,21).

Of the socioeconomic and demographic variables analysed, both being a woman and being retired were associated with pandemic-specific worsening in mental health, in line with previous UK representatively sampled studies (9,22). While our data do not show any increase in mental health symptoms related to other socioeconomic factors specifically associated with the pandemic (e.g. rating that the pandemic had a negative financial impact or employment status) we believe it would be premature to rule out an effect, firstly because the economic impact of the pandemic has not yet fully taken hold and secondly because we note other large representative surveys have reported clear links (8,9). Finally, similar to other studies we found no evidence that having a medical condition associated with increased risk of severe COVID-19 was associated with worsening symptoms of depression and anxiety (9).

This study has a number of advantages, including the specific focus on modifiable risk factors and several years of pre-pandemic mental health assessments to enable careful evaluation of the impact of the pandemic specifically. The main limitation is the potential for bias in an on-line self-selecting sample. In particular we note the overrepresentation of women and those with a higher education. More longitudinal data from the pandemic will be needed in order to know whether the worsening observed here continues, plateaus, or returns to baseline.

Conclusion.

In a large longitudinally studied sample exploring mental health effects of the COVID-19 pandemic in middle aged and older people in the UK, we found that loneliness and decreased physical activity were both associated with worse mental health during the pandemic and that this was distinct from the general relationship between these two risk factors and poor mental health. Our study provides robust evidence in support of targeted interventions to improve mental health of people in mid to late life in the subsequent waves of the pandemic.

Declaration of interests

The other authors declare no competing interests. The views expressed are those of the author(s) and not necessarily those of the NHS, the NIHR or the Department of Health and Social Care or Public Health England.

Acknowledgements

The authors would like to thank Ellie Pickering, Adam Bloomfield and Ben Wood at the University of Exeter for project management and IT development related to the COVID-19 mental health questionnaire. We also thank the HRA for expediting ethical review, the PROTECT study PPI group and all participants for taking the time to complete the questionnaire. Dr Siobhan O'Dwyer is supported by the National Institute for Health Research Applied Research Collaboration South West Peninsula. The views expressed in this publication are those of the author(s) and not necessarily those of the National Institute for Health Research or the Department of Health and Social Care.

Author contributions:

BC: design, analysis, figures, literature search, data collection, interpretation, drafting, review; ZK: design, funding, analysis, manuscript drafting and review; WH: statistical analysis and data visualisation, manuscript review; SOD: design, manuscript drafting and review; AC: data collection; MVS: funding, data collection; KM: literature search; NW: design, manuscript drafting and review; IT: design, funding, manuscript drafting and review; DA: design, funding, manuscript drafting and review; CB: design, funding, manuscript drafting and review

References

1. Duan L, Zhu G. Psychological interventions for people affected by the COVID-19 epidemic. *The Lancet Psychiatry* [Internet]. 2020 Apr 1;7(4):300–2. Available from: [https://doi.org/10.1016/S2215-0366\(20\)30073-0](https://doi.org/10.1016/S2215-0366(20)30073-0)
2. Gunnell D, Appleby L, Arensman E, Hawton K, John A, Kapur N, et al. Suicide risk and prevention during the COVID-19 pandemic. *The Lancet Psychiatry* [Internet]. 2020 Jun 1;7(6):468–71. Available from: [https://doi.org/10.1016/S2215-0366\(20\)30171-1](https://doi.org/10.1016/S2215-0366(20)30171-1)
3. Galea S, Merchant RM, Lurie N. The Mental Health Consequences of COVID-19 and Physical Distancing: The Need for Prevention and Early Intervention. *JAMA Intern Med* [Internet]. 2020 Jun 1;180(6):817–8. Available from: <https://doi.org/10.1001/jamainternmed.2020.1562>
4. Pfefferbaum B, North CS. Mental Health and the Covid-19 Pandemic. *N Engl J Med* [Internet]. 2020 Apr 13; Available from: <https://doi.org/10.1056/NEJMp2008017>
5. Armitage R, Nellums LB. COVID-19 and the consequences of isolating the elderly. *Lancet Public Heal* [Internet]. 2020 May 1;5(5):e256. Available from: [https://doi.org/10.1016/S2468-2667\(20\)30061-X](https://doi.org/10.1016/S2468-2667(20)30061-X)
6. Yao H, Chen J-H, Xu Y-F. Patients with mental health disorders in the COVID-19 epidemic. *The Lancet Psychiatry* [Internet]. 2020 Apr 1;7(4):e21. Available from: [https://doi.org/10.1016/S2215-0366\(20\)30090-0](https://doi.org/10.1016/S2215-0366(20)30090-0)
7. Holmes EA, O'Connor RC, Perry VH, Tracey I, Wessely S, Arseneault L, et al. Multidisciplinary research priorities for the COVID-19 pandemic: a call for action for mental health science. *The Lancet Psychiatry* [Internet]. 2020 May 5; Available from: [https://doi.org/10.1016/S2215-0366\(20\)30168-1](https://doi.org/10.1016/S2215-0366(20)30168-1)
8. Frank P, Iob E, Steptoe A, Fancourt D. Trajectories of depressive symptoms among vulnerable groups in the UK during the COVID-19 pandemic. *medRxiv* [Internet]. 2020 Jan 1;2020.06.09.20126300. Available from: <http://medrxiv.org/content/early/2020/06/11/2020.06.09.20126300.abstract>
9. Pierce M, Hope H, Ford T, Hatch S, Hotopf M, John A, et al. Mental health before and during the COVID-19 pandemic: a longitudinal probability sample survey of the UK population. *The Lancet Psychiatry* [Internet]. 2020 Jul 22; Available from: [https://doi.org/10.1016/S2215-0366\(20\)30308-4](https://doi.org/10.1016/S2215-0366(20)30308-4)
10. COVID-19 Psychological Research Consortium (C19PRC). Initial Research Findings on COVID-19 and Mental Health in the UK [Internet]. 2020. Available from: <https://drive.google.com/file/d/1A95KvikwK32ZAX387nGPNBCnoFktdumm/view>
11. McGinty EE, Presskreischer R, Han H, Barry CL. Psychological Distress and Loneliness Reported by US Adults in 2018 and April 2020. *JAMA* [Internet]. 2020 Jun 3;324(1):93–4. Available from: <https://pubmed.ncbi.nlm.nih.gov/32492088>
12. Santini ZI, Jose PE, York Cornwell E, Koyanagi A, Nielsen L, Hinrichsen C, et al. Social disconnectedness, perceived isolation, and symptoms of depression and anxiety among older Americans (NSHAP): a longitudinal mediation analysis. *Lancet Public Heal* [Internet]. 2020 Jan 1;5(1):e62–70. Available from: [https://doi.org/10.1016/S2468-2667\(19\)30230-0](https://doi.org/10.1016/S2468-2667(19)30230-0)
13. Haskell WL, Blair SN, Hill JO. Physical activity: Health outcomes and importance for public health policy. *Prev Med (Baltim)* [Internet]. 2009;49(4):280–2. Available from: <http://www.sciencedirect.com/science/article/pii/S0091743509002199>
14. Killgore WDS, Cloonan SA, Taylor EC, Dailey NS. Loneliness: A signature mental health concern in the era of COVID-19. *Psychiatry Res* [Internet]. 2020;290:113117. Available from: <http://www.sciencedirect.com/science/article/pii/S0165178120312257>
15. Maugeri G, Castrogiovanni P, Battaglia G, Pippi R, D'Agata V, Palma A, et al. The impact of physical activity on psychological health during Covid-19 pandemic in Italy. *Heliyon* [Internet]. 2020 Jun 24;6(6):e04315–e04315. Available from: <https://pubmed.ncbi.nlm.nih.gov/32613133>
16. Creese B, Brooker H, Ismail Z, Wesnes KA, Hampshire A, Khan Z, et al. Mild Behavioral Impairment as a Marker of Cognitive Decline in Cognitively Normal Older Adults. *Am J Geriatr Psychiatry*.

2019;27(8).

17. Kroenke K, Spitzer RL, Williams JB. The PHQ-9: validity of a brief depression severity measure. *J Gen Intern Med*. 2001 Sep;16(9):606–13.
18. Spitzer RL, Kroenke K, Williams JBW, Lowe B. A brief measure for assessing generalized anxiety disorder: the GAD-7. *Arch Intern Med*. 2006 May;166(10):1092–7.
19. Hughes ME, Waite LJ, Hawkey LC, Cacioppo JT. A Short Scale for Measuring Loneliness in Large Surveys: Results From Two Population-Based Studies. *Res Aging [Internet]*. 2004 Nov 1;26(6):655–72. Available from: <https://doi.org/10.1177/0164027504268574>
20. Banks J, Xu X. The mental health effects of the first two months of lockdown and social distancing during the Covid-19 pandemic in the UK [Internet]. 2020. Available from: <https://www.ifs.org.uk/publications/14876>
21. Age UK. Loneliness and Isolation Evidence Review [Internet]. Available from: https://www.ageuk.org.uk/documents/en-gb/for-professionals/evidence_review_loneliness_and_isolation.pdf?dtrk=true
22. Fancourt D, Bu F, Wan Mak H, Steptoe A. Covid-19 Social Study: Results Release 16 [Internet]. 2020. Available from: https://b6bdc03-332c-4ff9-8b9d-28f9c957493a.filesusr.com/ugd/3d9db5_dc64263647624fd3842e6521c186aa69.pdf