

Article Type

Full length

Title

Ultrasound to identify lupus patients with inflammatory joint symptoms with a better response to therapy: The USEFUL longitudinal multicentre study

Authors

Khaled Mahmoud^{1,9}, Ahmed S Zayat², Md Yuzaiful Md Yusof^{1,8}, Katherine Dutton^{1,8}, Lee Suan Teh³, Chee-Seng Yee⁴, David D'Cruz⁵, Nora Ng⁵, David Isenberg⁶, Coziana Ciurtin⁷, Philip G Conaghan^{1,9}, Paul Emery^{1,9}, Christopher J Edwards⁸, Elizabeth MA Hensor^{1,9}, Edward M Vital^{1,9}

Affiliations

1. NIHR Leeds Biomedical Research Centre, Leeds Teaching Hospitals NHS Trust, Leeds
2. Bradford Teaching Hospitals NHS Foundation Trust, Bradford
3. Royal Blackburn Teaching Hospital, Blackburn and University of Central Lancashire, Preston
4. Doncaster and Bassetlaw Teaching Hospitals NHS Foundation Trust, Doncaster
5. Guys and St Thomas Hospital, London
6. University College London, London
7. Centre for Adolescent Rheumatology, University College London, London
8. NIHR Clinical Research Facility, University Hospital Southampton NHS Foundation Trust, Southampton
9. Leeds Institute of Rheumatic and Musculoskeletal Medicine, University of Leeds, Leeds

Correspondence

Dr Edward Vital
Chapel Allerton Hospital
Leeds LS7 4SA
United Kingdom
Email: e.m.vital@leeds.ac.uk

Key Words

Systemic Lupus Erythematosus, Ultrasound, Musculoskeletal Examination, Morning Stiffness, Corticosteroids.

Word Count

2956

Financial Disclosures

This work was funded by a grant from LupusUK and supported by a clinician scientist fellowship from the NIHR for Dr Vital. Coziana Ciurtin has received a research grant from Pfizer and personal fees from Roche and Modern Bioscience. Chris Edwards has received personal fees from GSK, BMS and Roche. David Isenberg has received personal fees paid to a charity from Merck Serono, AstraZeneca, Celgene, Eli Lilly and Servier. Philip Conaghan has received personal fees from AbbVie, AstraZeneca, BMS, Galapagos, Gilead, Janssen, Novartis and Pfizer. Paul Emery has received research grants paid to his employer from AbbVie, BMS, Pfizer, MSD, Roche and personal fees from AbbVie, BMS, Pfizer, MSD, Roche, Janssen, Novartis and UCB. Edward Vital has received research grants paid to his employer from AstraZeneca and Sandoz, and personal fees from Genentech, Aurinia, Lilly and Modus Therapeutics. Khaled Mahmoud, Ahmed Zayat, Yuzaiful Yusof, Katherine Dutton, Chee Seng Yee, Lee Suan Teh, Nora Ng, David D'Cruz and Elizabeth Hensor have no financial disclosures.

1 **Abstract**

2 **Objective**

3 To determine whether SLE patients with inflammatory joint symptoms and ultrasound-synovitis
4 achieve better clinical responses to glucocorticoid compared to patients with normal scans.

5 Secondary objectives included identification of clinical features predicting ultrasound-synovitis.

6 **Methods**

7 A longitudinal multicentre study of SLE patients with physician-diagnosed inflammatory joint pain
8 was undertaken. Clinical assessments, patient-reported outcomes, and bilateral hands and wrist
9 ultrasound were collected at 0-, 2- and 6-weeks after intramuscular methylprednisolone 120mg.

10 The primary outcome (determined via internal pilot analysis) was EMS-VAS at 2-weeks, adjusted
11 for the baseline value, comparing patients with positive ($GS \geq 2$ and/or $PD \geq 1$) and negative
12 ultrasound. Post-hoc analyses adjusting for fibromyalgia were performed.

13 **Results**

14 Of 133 patients recruited, 78/133 had positive ultrasound, but only 68% of these had ≥ 1 swollen
15 joint. Of 66/133 patients with ≥ 1 swollen joint, 20% had negative ultrasound. Positive ultrasound
16 was associated with joint swelling, symmetrical small joint distribution and serology. In full analysis
17 set ($n=133$) there was no difference in baseline-adjusted EMS-VAS at week 2 (-7.7mm 95% CI -
18 19.0mm, 3.5mm, $p=0.178$). After excluding 32 fibromyalgia patients, response was significantly
19 better in patients with positive ultrasound at baseline (baseline-adjusted EMS-VAS at 2-weeks -
20 12.1 mm, 95% CI -22.2mm, -0.1mm, $p=0.049$). This difference was greater when adjusted for
21 treatment (-12.8mm (95% CI -22mm, -3mm), $p=0.007$). BILAG and SLEDAI responses were higher
22 in ultrasound-positive patients.

23 **Conclusions**

24 In SLE patients without fibromyalgia, those with positive ultrasound had a better clinical response
25 to therapy. Imaging-detected synovitis should be used to select SLE patients for therapy and
26 enrich clinical trials.

1 Introduction

2 Inflammatory joint disease affects more than 90% of patients with systemic lupus erythematosus
3 (SLE) and is a major determinant of long term quality of life and disability[1, 2]. Our previous work
4 suggests that this disproportionate impact on quality of life and disability may be due to under-
5 treatment [1, 3]. SLE patients often have less joint swelling than rheumatoid or psoriatic arthritis
6 patients.

7 In the British Isles Lupus Assessment Group (BILAG-2004) index[4], A and B scores (indicating
8 active disease needing additional immunosuppression) can only be achieved if joints are swollen,
9 w. The SELENA and 2K versions of the SLE Disease Activity Index (SLEDAI) score 'arthritis' if
10 there are at least 3 or 2 inflamed joints, respectively[5, 6]. There is scope for interpretation of which
11 signs qualify for this 'inflamed' criterion, but swelling is often sought before scoring this feature in
12 clinical trials and routine practice. Patients who fail to score on these scales invariably fail to qualify
13 for treatment with biologic therapies[7].

14 Previous ultrasound studies have shown that clinical joint swelling underestimates synovitis
15 severity, although a systematic review found several methodological factors leading to uncertain
16 estimates of the rates of ultrasound-synovitis[8]. We therefore conducted a large cross-sectional
17 study to address these problems and estimated the rates of clinical and ultrasound abnormality in
18 SLE patients presenting with inflammatory joint pain: 38% had clinical joint swelling, 35% had
19 neither swelling on clinical examination nor evidence of ultrasound synovitis. However, 27% of
20 patients had synovitis only detectable with ultrasound. Ultrasound-only synovitis appeared more
21 clinically significant, being associated with worse tender joint count, physician VAS and serum IgG
22 level[9].

23 We hypothesized that SLE patients presenting with inflammatory joint disease would demonstrate
24 a better clinical response to therapy if synovitis was confirmed by ultrasound. To test this
25 hypothesis we conducted a prospective, longitudinal, multi-centre study: UltraSound Evaluation For
26 mUculoskeletal Lupus (USEFUL). The primary objective was to determine whether patients with
27 ultrasound-synovitis had better clinical responses to glucocorticoid therapy compared to patients
28 without ultrasound synovitis. Other objectives included a comparison of ultrasound with the clinical
29 variables at baseline to understand which are most useful when evaluating SLE patients.

1 **Methods**

2 The study was approved by North West Greater Manchester Central Research Ethics Committee
3 (Reference 16/NW/0060). Full details about the methodology can be found in online supplementary
4 files.

5 **Patients and design**

6 A prospective longitudinal UK multicentre cohort study was conducted in adults with SLE (meeting
7 the revised ACR/SLICC 2012 criteria)[10], deemed by their physicians to have inflammatory joint
8 pain requiring glucocorticoid therapy (swollen joints or specific BILAG-2004 / SLEDAI-2K scores
9 were not required). Patients received intramuscular methylprednisolone 120mg at week 0 and had
10 clinical and ultrasound assessments at weeks 0, 2 and 6 (Figure 1).

11 **Data and outcomes**

12 Physician assessments included demographics, BILAG-2004, SLEDAI-2K, joint counts and global
13 and musculoskeletal visual analogue scales (VAS), inflammatory markers and lupus serology and
14 recorded features of inflammation, fibromyalgia, osteoarthritis, Early Morning Stiffness (EMS) and
15 prior response to therapy. Patient-reported outcomes (LupusQoL, L-QoL, EMS minutes, EMS
16 severity VAS, Likert scale for improvement in symptoms and Patient-acceptable symptom state)
17 were collected[11]. Ultrasound was used to assess Grey scale (GS), Power Doppler (PD) and
18 tenosynovitis according to OMERACT criteria[12] in both hands and wrists. Ultrasound was
19 deemed "positive" if there was synovitis $GS \geq 2$ and/or $PD \geq 1$ or tenosynovitis $GS \geq 1$ and/or $PD \geq 1$.
20 Physicians, ultrasonographers and patients were all blinded to each other's assessments.

21 Details of ultrasound assessments are given in the supplementary methods. All sonographers
22 attended a training event at baseline. The same four SLE patients were scored by each
23 sonographer and proportions of agreement were calculated. These were Grey Scale: kappa =
24 0.69; Power Doppler: kappa = 0.98; Erosions: kappa = 0.85.

25 **Internal pilot**

26 There were limited existing data on the most appropriate clinical measure of improvement[13]. We
27 therefore conducted an internal pilot analysis of the first 70 patients (clinical data only). In this
28 analysis, we evaluated various clinical variables with the best association with patient-reported
29 improvement in symptoms based on Likert scale. This determined power calculations for the full
30 study, and how many further patients should be recruited.

31 Change in the early morning stiffness severity based on VAS (EMS-VAS, mm) at week 2 from
32 baseline (week 0) was selected as the primary outcome (see supplementary material). In other
33 inflammatory arthritis this scale is better at discriminating high and low disease activity, and more

1 responsive than EMS duration[14, 15]. We considered a difference of 20% compared to
2 ultrasound-inactive to be the minimum difference of interest.

3 **Statistical Analyses**

4 At baseline, descriptive data were presented on levels of agreement between ultrasound activity
5 and joint swelling, BILAG-2004 and SLEDAI-2K musculoskeletal grades. In order to understand
6 which symptoms, signs and routine laboratory tests were associated with ultrasound activity at
7 baseline, we compared physician-reported features using Pearson's Chi-squared for categorical
8 variables or t-tests for continuous variables. These variables were also compared between
9 SLEDAI-2K and BILAG-2004 categories.

10 The primary outcome was compared between patients with definite synovitis (ultrasound-active)
11 and low level/no synovitis (ultrasound-inactive) at week 2 using quantile (median) regression, with
12 cluster-robust standard errors employed to account for clustering of patients within centres. The
13 primary analysis model adjusted for EMS-VAS at baseline; the unadjusted difference is presented
14 for comparison.

15 In a planned sensitivity analysis, concomitant immunosuppressant and oral glucocorticoid (both
16 recorded yes/no) were also added to the model. In a further planned sensitivity analysis, the above
17 approaches were repeated in the per protocol set. Because there were a substantial number of
18 patients with fibromyalgia, which may confound symptom responses, additional, unplanned,
19 sensitivity analyses were performed in patients deemed not to have fibromyalgia at baseline[16].
20 The same analytical approach was then used to compare the other clinical variables at 2 and 6
21 weeks according to baseline ultrasound activity, controlling for baseline values of the outcome in
22 each case. Because BILAG-2004, SLEDAI-2K and LupusQoL scores evaluate symptoms over the
23 past month, we analysed these endpoints at week 6 only, using unadjusted changes from baseline
24 between groups. An additional sensitivity analysis compared unadjusted changes from baseline
25 between groups for all other clinical variables; this was added for comparison because baseline-
26 adjusted analyses can potentially be biased when comparing nonrandomised groups.

1 **Results**

2 133 SLE patients were recruited. 121 completed all visits (see supplement for details). Baseline
3 characteristics are summarized in Table 1.

4 **Association of clinical features and ultrasound synovitis status**

5 Active ultrasound was more likely if the clinical presentation included joint swelling, a symmetrical
6 small joint distribution and active serology. Physician report of EMS, a common symptom used to
7 identify inflammatory arthritis in routine practice, was not associated with ultrasound findings.

8 There was also no association between active ultrasound findings and other SLE features, nor with
9 the physician's impression of their prior response to therapy (Table 1).

10 We found no association between ethnicity and ultrasound features, although low numbers of non-
11 white non-south Asian patients limited this analysis. Although there were only 7 men in this study,
12 all of them had ultrasound synovitis.

13 There was substantial disagreement between ultrasound and conventional clinical definitions of
14 disease activity (Table 2).

15 We compared swollen joint count in all joints with ultrasound scans in the hands and wrists (a
16 typical ultrasound examination in routine practice, confirmed as clinically relevant in our previous
17 study and systematic review {Zayat, 2018 #8;Zayat, 2016 #3}Table 2A). 13/66 (20%) of patients
18 with clinical joint swelling did not have active ultrasound. 25/78 (32%) of patients with active
19 ultrasound findings did not have joint swelling.

20 To evaluate the same set of joints, we evaluated clinical joint swelling in the 22 joints included in
21 the ultrasound scan (Table 2B). This reduced the number of swollen joints not confirmed as having
22 active ultrasound, but clinical examination remained insensitive.

23 19/78 (24%) of patients scored for arthritis on the SLEDAI-2K did not have active ultrasound.
24 Equally, 19/78 (24%) of patients with active ultrasound were not scored for arthritis on the SLEDAI-
25 2K.

26 13/66 (20%) of patients who scored A or B for the musculoskeletal BILAG-2004 did not have active
27 ultrasound. 25/78 (32%) patients with active ultrasound did not score A or B on the
28 musculoskeletal domain of the BILAG-2004. BILAG-2004 includes a "C" grade representing
29 inflammatory pain. All patients in the study met this grade since it matched the eligibility criteria.
30 However, notably, the majority of patients with BILAG-2004 C (42/67, 63%) did not actually have
31 active ultrasound findings. It must be noted that BILAG-2004 and SLEDAI-2K scores could also be
32 influenced by joints that were not included in the ultrasound examination.

33 Patients with active ultrasound had statistically significant worse symptoms and signs of lupus

1 arthritis (Table S2), and higher ESR and total IgG level (Table S4). Active ultrasound was also
2 associated with anti-Sm and anti-RNP antibodies (Table S4). 20/26 (77%) of Sm+ patients had
3 active ultrasound, compared to 58/107 (55%) of Sm- patients ($p = 0.035$). Similarly, 17/22 (77%) of
4 RNP+ patients had active ultrasound compared to 61/111 (55%) of RNP- patients ($p = 0.052$).

5 Quality of life scores as measured by the LupusQoL was similar in patients with active and inactive
6 ultrasound (Table S3). Exclusion of patients with fibromyalgia did not change this result (data not
7 shown). All patients in this study had active joint symptoms requiring increased therapy at baseline,
8 therefore they would be expected to rate their quality of life as being affected even if this was not
9 due to active inflammation. Primary outcome

10 Results for primary outcome analysis is shown in Figure 2 with full statistical data in Table S7.

11 In the full analysis set ($n=133$) the mean (SD) baseline EMS-VAS was 57.7mm (4.1) in ultrasound-
12 inactive patients, and 58.6mm (5.9) in ultrasound-active patients. The primary efficacy analysis
13 showed no clinically or statistically significant difference between these groups (baseline-adjusted
14 difference -7.7mm (95% CI -19.0, 3.5), $p=0.178$). The planned sensitivity analysis, which was also
15 adjusted for immunosuppressant and oral glucocorticoid use, did not substantially affect this result
16 (-6.3mm (95% CI -18.1, 5.5), $p=0.293$). Results in the per-protocol set ($n=122$) were broadly
17 similar.

18 **Post-hoc analyses in patients without concurrent fibromyalgia**

19 32 patients had a clinician diagnosis of fibromyalgia at baseline (which generally does not respond
20 to glucocorticoids[17]). In patients without fibromyalgia ($n=101$), mean baseline EMS-VAS was
21 56.3mm (4.5) in ultrasound-inactive patients and 51.4mm (6.0) in ultrasound-active patients. An
22 unplanned sensitivity analysis, repeating the baseline-adjusted primary analysis in this group,
23 showed a significantly lower EMS-VAS at 2 weeks in patients with ultrasound synovitis at baseline
24 (ultrasound-active – ultrasound-inactive -12.1 (95% CI -24.1, -0.1), $p=0.049$). This difference was
25 greater in the treatment-adjusted sensitivity analysis (-12.8 (95% CI -22.2, -3.44), $p=0.007$) and in
26 the per-protocol treatment-adjusted sensitivity analysis (-14.8 (95% CI -20.8, -8.8), $p<0.001$).

27 **Other clinical endpoints**

28 BILAG-2004 and SLEDAI indices (which include manifestations from the previous 30 days) at 6
29 weeks according to baseline ultrasound activity are shown in Figure 3 and Tables S12-13. In the
30 full analysis set ($n=133$) the musculoskeletal-BILAG improved (reduced by at least one grade, i.e.
31 A to B, B to C or C to D) in 32% of ultrasound-inactive patients and 51% of ultrasound-active
32 patients (odds ratio (OR) 2.15 (1.10, 4.17), $p=0.024$). The SLEDAI-2K arthritis criterion improved
33 (resolution of arthritis criterion) in 22% of ultrasound-inactive patients and 38% of ultrasound-active
34 patients (OR 2.17 (95% CI 1.41, 3.35), $p<0.001$).

1 The improved responses in ultrasound-active patients were again more evident in patients without
2 fibromyalgia (n=101). The MSK-BILAG-2004 improved in 26% of ultrasound-inactive patients and
3 56% of ultrasound-active (OR 3.74 (95% CI 2.03, 6.90), $p < 0.001$). The MSK-SLEDAI-2K improved
4 in 15% of ultrasound-inactive patients and 37% of ultrasound-active patients (3.24 (95% CI 1.62,
5 6.50), $p = 0.001$).

6 Data for other clinical outcomes at 2 and 6 weeks is shown in supplementary tables S8 and S9.

7 **Quality of life**

8 Three domains of the LupusQoL also showed greater improvement in ultrasound-active patients
9 (Table 3 and Figure 3). Significantly greater improvement was seen in ultrasound-active patients
10 for the physical health, burden to others, and body image domains. The size of these effects
11 differed slightly between the 2 and 6 week timepoints, and between the primary and sensitivity
12 analysis. However, differences were found in both the full analysis set and the subgroup without
13 fibromyalgia. Patients without fibromyalgia were significantly more likely to achieve a patient-
14 acceptable symptom state at week 2 if ultrasound was active at baseline (38% versus 32%,
15 baseline-adjusted primary OR 1.75 (1.22, 2.49), $p = 0.002$).

16 **Sensitivity analyses for secondary clinical endpoints**

17 Sensitivity analyses comparing unadjusted changes from baseline between groups (Tables S10-
18 S13) generally indicated the same direction of effect for primary and secondary outcomes
19 compared to the main analysis. When patients with fibromyalgia were excluded, both analysis
20 methods agreed the response was greater in those with baseline ultrasound-active for EMS VAS
21 and the LupusQoL domain 'burden to others' as well as SLEDAI MSK at week 6. However, for
22 physician global and MSK VAS the two analysis methods disagreed over the direction of effect.

1 **Discussion**

2 This study the most comprehensive clinical and imaging data to define which SLE patients with
3 inflammatory joint symptoms are most responsive to glucocorticoid therapy. We demonstrated
4 disagreement between ultrasound synovitis and features commonly used to guide
5 immunosuppressive therapy: joint swelling or completion of the BILAG-2004 and SLEDAI-2K
6 indices. Although the primary outcome was not met, this may be due to a large proportion of
7 patients having fibromyalgia. When they were excluded, we found a greater clinical response to
8 glucocorticoid in participants with ultrasound synovitis at baseline in several clinical and patient-
9 reported endpoints. These results have importance for the selection of patients for therapy in
10 routine practice, clinical trials in SLE, and for the utility of ultrasound in this disease.

11 Despite the availability of licensed immunosuppressive therapies, musculoskeletal symptoms
12 continue to have a major negative impact on quality of life in patients with SLE[1]. Our results
13 indicate that outcomes may improve by targeting treatment to appropriate patients. In patients with
14 no swelling but positive ultrasound synovitis, there may be value in escalating immunosuppressive
15 therapy. Conversely, a negative ultrasound may indicate that it is safe to continue to taper
16 glucocorticoids, which is important given the toxicity of long-term glucocorticoids.

17 If ultrasound is not available, the most useful signs indicating active joint inflammation are
18 distribution, swelling and symmetry. Conversely, some other symptoms (EMS, other lupus
19 features, prior therapy response) commonly used in practice may not be helpful. Consistent with
20 our previous work, the level of IgG may be useful in identifying active lupus arthritis[9]. Sm and RNP
21 antibodies are also helpful.

22 Despite the negative impact of fibromyalgia on responsiveness, it is important to note that we
23 confirmed ultrasound-proven inflammation in patients who also had this condition, as well as
24 osteoarthritis or other non-inflammatory pathologies. There may be longer term benefits of
25 treatment in these subgroups and the value of treating ultrasound-synovitis in patients with
26 fibromyalgia requires further work. The number of patients diagnosed with fibromyalgia in our
27 study was high compared to unselected SLE cohorts[18], which is not surprising since the main
28 inclusion criterion was pain.

29 The data from this study fulfill many of the criteria in the OMERACT filter for validation of
30 ultrasound as an outcome measure in SLE[19]. Previous data had shown that ultrasound had face
31 validity, and concurrent validity (association with BILAG-2004 and SLEDAI indices [8, 20, 21]. In
32 the present study, for the first time we demonstrate that it has predictive validity for therapy
33 response.

34 Many clinical trials of new therapies in SLE failed to demonstrate any benefit even though there

1 were reasons to believe these therapies should have been effective[22]. In addition phase II and
2 phase III trial data using the same monoclonal have produced very different results. Thus the
3 primary endpoint was not met in the phase II trials of belimumab, but was met in phase III trials that
4 altered eligibility criteria and the primary endpoint[23-25]. A trial of rituximab in non-renal SLE was
5 negative, but the therapy is widely used in routine practice based on extensive open label evidence
6 of efficacy[26][27-29]. One phase III trial of anifrolumab was negative, despite strongly positive
7 phase II data and another phase III trial was positive [30, 31] For belimumab, markers of greater
8 disease activity at baseline predicted a larger effect size between active and placebo groups. Our
9 results help to define a target population to enroll or enrich clinical trials with confirmed synovitis
10 and consequent greater response to therapy. Usually eligibility is based on clinical examination for
11 swollen joints. We showed that 20% of such patients do not have active synovitis. Further, we
12 showed that, although patients with fibromyalgia may have confirmed active synovitis, this
13 comorbidity confounds assessment of response. Hence our results suggest that the use of
14 ultrasound (or other imaging) synovitis as an inclusion criterion, and exclusion of patients with
15 significant fibromyalgia that would affect disease activity assessment may result in larger effect
16 sizes in clinical trials of new therapies.

17 The main limitation of our study is the open label design. This limits understanding of how these
18 patient selection criteria would function in an RCT. Although ultrasound is a more sensitive test of
19 inflammation than clinical examination, there could be immune-mediated causes of pain that are
20 not well captured by this tool, such as bone oedema[32]. The fibromyalgia analysis was post-hoc.
21 However, it is logical in line with clinical practice since fibromyalgia is a well-known co-morbidity
22 that influences response to therapy[33]. Lastly, a possible explanation for the discrepancy between
23 ultrasound and BILAG-2004 and SLEDAI was that ultrasound was only done on hands while the
24 BILAG and SLEDAI indices take into account all joints. BILAG-2004 and SLEDAI are also
25 dependent on the training of the assessor. Our study was conducted in BILAG member centres. In
26 a less specialist setting, these instruments may have performed worse compared to ultrasound.

27 Future research should evaluate the use of ultrasound in randomised trials to determine whether it
28 can measure and stratify differences between treatment groups. Such an RCT is in progress
29 (ROOTS, NCT03054259). Future work will define clinical outcome measures for musculoskeletal
30 disease activity that better match the results obtained from ultrasound.

31 In conclusion, ultrasound-synovitis is clinically important and responsive to therapy in SLE.

32 **Acknowledgments and Affiliations**

33 This research was supported by the United Kingdom National Institute for Health Research Leeds
34 Biomedical Research Centre based at the Leeds Teaching Hospitals NHS Trust. The views
35 expressed are those of the authors and not necessarily those of the NHS, the NIHR or the

1 Department of Health. Dr Mahmoud was funded by the University of Benghazi. Dr Md Yusof is an
2 NIHR Clinical Lecturer and Dr Vital is an NIHR Clinician Scientist. Dr. Ciurtin is funded by a Centre
3 for Adolescent Rheumatology Versus Arthritis grant, 21593. There are no competing interests. This
4 research was supported by a grant from LupusUK and the National Institute of Health Research
5 (CS-2013-13-032).

1 **References**

- 2 1. Mahmoud K, Zayat A, Vital EM. Musculoskeletal manifestations of systemic lupus
3 erythematosus. *Current opinion in rheumatology*. 2017; 29(5):486-492.
- 4 2. Pettersson S, Lovgren M, Eriksson LE, Moberg C, Svenungsson E, Gunnarsson I, et al. An
5 exploration of patient-reported symptoms in systemic lupus erythematosus and the relationship to
6 health-related quality of life. *Scandinavian journal of rheumatology*. 2012 Oct; 41(5):383-390.
- 7 3. Zayat AS, Md Yusof MY, Wakefield RJ, Conaghan PG, Emery P, Vital EM. The role of
8 ultrasound in assessing musculoskeletal symptoms of systemic lupus erythematosus: a systematic
9 literature review. *Rheumatology*. 2016; 55(3):485-494.
- 10 4. Isenberg DA, Rahman A, Allen E, Farewell V, Akil M, Bruce IN, et al. BILAG 2004.
11 Development and initial validation of an updated version of the British Isles Lupus Assessment
12 Group's disease activity index for patients with systemic lupus erythematosus. *Rheumatology*
13 (Oxford, England). 2005 Jul; 44(7):902-906.
- 14 5. Gladman DD, Ibanez D, Urowitz MB. Systemic lupus erythematosus disease activity index
15 2000. *The Journal of rheumatology*. 2002 Feb; 29(2):288-291.
- 16 6. Ibanez D, Gladman D, Urowitz M. Summarizing disease features over time: II. Variability
17 measures of SLEDAI-2K. *The Journal of rheumatology*. 2007 Feb; 34(2):336-340.
- 18 7. NICE. Belimumab for treating active autoantibody-positive systemic lupus erythematosus.
19 2016 [cited; Available from:
- 20 8. Zayat AS, Md Yusof MY, Wakefield RJ, Conaghan PG, Emery P, Vital EM. The role of
21 ultrasound in assessing musculoskeletal symptoms of systemic lupus erythematosus: a systematic
22 literature review. *Rheumatology (Oxford, England)*. 2016 Mar; 55(3):485-494.
- 23 9. Zayat AS, Mahmoud K, Md Yusof MY, Mukherjee S, D'agostino M-a, Hensor EM, et al.
24 Defining inflammatory musculoskeletal manifestations in systemic lupus erythematosus.
25 *Rheumatology*. 2018; 58(2):304-312.
- 26 10. Petri M, Orbai AM, Alarcon GS, Gordon C, Merrill JT, Fortin PR, et al. Derivation and
27 validation of the Systemic Lupus International Collaborating Clinics classification criteria for
28 systemic lupus erythematosus. *Arthritis and rheumatism*. 2012 Aug; 64(8):2677-2686.
- 29 11. McElhone K, Abbott J, Shelmerdine J, Bruce IN, Ahmad Y, Gordon C, et al. Development
30 and validation of a disease-specific health-related quality of life measure, the LupusQoL, for adults
31 with systemic lupus erythematosus. *Arthritis Care & Research*. 2007; 57(6):972-979.
- 32 12. D'Agostino M-A, Terslev L, Aegerter P, Backhaus M, Balint P, Bruyn GA, et al. Scoring
33 ultrasound synovitis in rheumatoid arthritis: a EULAR-OMERACT ultrasound taskforce—Part 1:
34 definition and development of a standardised, consensus-based scoring system. *RMD open*. 2017;
35 3(1):e000428.
- 36 13. Mahmoud K, Zayat AS, Yusof Y, Hensor E, Conaghan PG, Emery P, et al. Responsiveness
37 of clinical and ultrasound outcome measures in musculoskeletal systemic lupus erythematosus.
38 *Rheumatology*. 2019; 58(8):1353-1360.
- 39 14. van Tuyl LH, Lems WF, Boers M. Measurement of stiffness in patients with rheumatoid
40 arthritis in low disease activity or remission: a systematic review. *BMC musculoskeletal disorders*.
41 2014 Jan 29; 15:28.
- 42 15. Vliet Vlieland TP, Zwinderman AH, Breedveld FC, Hazes JM. Measurement of morning

- 1 stiffness in rheumatoid arthritis clinical trials. *Journal of clinical epidemiology*. 1997 Jul; 50(7):757-
2 763.
- 3 16. Benlidayi IC. Fibromyalgia interferes with disease activity and biological therapy response in
4 inflammatory rheumatic diseases. *Rheumatology International*. 2020:1-10.
- 5 17. Clark S, Tindall E, Bennett RM. A double blind crossover trial of prednisone versus placebo
6 in the treatment of fibrositis. *The Journal of rheumatology*. 1985 Oct; 12(5):980-983.
- 7 18. Torrente-Segarra V, Salman-Monte T, Rúa-Figueroa I, Pérez-Vicente S, López-Longo F,
8 Galindo-Izquierdo M. RELESSER Study Group of the Spanish Society of Rheumatology (SER) and
9 the Study Group of Systemic Autoimmune Diseases of the SER (EAS-SER). Fibromyalgia
10 prevalence and related factors in a large registry of patients with systemic lupus erythematosus.
11 *Clin Exp Rheumatol*. 2016; 34(Suppl 96):S40-47.
- 12 19. Boers M, Kirwan JR, Wells G, Beaton D, Gossec L, d'Agostino MA, et al. Developing core
13 outcome measurement sets for clinical trials: OMERACT filter 2.0. *Journal of clinical epidemiology*.
14 2014 Jul; 67(7):745-753.
- 15 20. Iagnocco A, Ceccarelli F, Rizzo C, Truglia S, Massaro L, Spinelli FR, et al. Ultrasound
16 evaluation of hand, wrist and foot joint synovitis in systemic lupus erythematosus. *Rheumatology*
17 (Oxford, England). 2014 Mar; 53(3):465-472.
- 18 21. Salliot C, Denis A, Demis E, Andre V, Perdriger A, Albert JD, et al. Ultrasonography and
19 detection of subclinical joints and tendons involvements in Systemic Lupus erythematosus (SLE)
20 patients: A cross-sectional multicenter study. *Joint, bone, spine : revue du rhumatisme*. 2018 Dec;
21 85(6):741-745.
- 22 22. Murphy G, Isenberg DA. New therapies for systemic lupus erythematosus - past imperfect,
23 future tense. *Nat Rev Rheumatol*. 2019 Jul; 15(7):403-412.
- 24 23. Wallace DJ, Stohl W, Furie RA, Lisse JR, McKay JD, Merrill JT, et al. A phase II,
25 randomized, double-blind, placebo-controlled, dose-ranging study of belimumab in patients with
26 active systemic lupus erythematosus. *Arthritis and rheumatism*. 2009 Sep 15; 61(9):1168-1178.
- 27 24. Navarra SV, Guzman RM, Gallacher AE, Hall S, Levy RA, Jimenez RE, et al. Efficacy and
28 safety of belimumab in patients with active systemic lupus erythematosus: a randomised, placebo-
29 controlled, phase 3 trial. *Lancet (London, England)*. 2011 Feb 26; 377(9767):721-731.
- 30 25. Furie R, Petri M, Zamani O, Cervera R, Wallace DJ, Tegzova D, et al. A phase III,
31 randomized, placebo-controlled study of belimumab, a monoclonal antibody that inhibits B
32 lymphocyte stimulator, in patients with systemic lupus erythematosus. *Arthritis and rheumatism*.
33 2011 Dec; 63(12):3918-3930.
- 34 26. Aguiar R, Araujo C, Martins-Coelho G, Isenberg D. Use of Rituximab in Systemic Lupus
35 Erythematosus: A Single Center Experience Over 14 Years. *Arthritis Care Res (Hoboken)*. 2017
36 Feb; 69(2):257-262.
- 37 27. Merrill JT, Neuwelt CM, Wallace DJ, Shanahan JC, Latinis KM, Oates JC, et al. Efficacy and
38 safety of rituximab in moderately-to-severely active systemic lupus erythematosus: the
39 randomized, double-blind, phase II/III systemic lupus erythematosus evaluation of rituximab trial.
40 *Arthritis and rheumatism*. 2010 Jan; 62(1):222-233.
- 41 28. Duxbury B, Combescure C, Chizzolini C. Rituximab in systemic lupus erythematosus: an
42 updated systematic review and meta-analysis. *Lupus*. 2013 Dec; 22(14):1489-1503.
- 43 29. Md Yusof MY, Shaw D, El-Sherbiny YM, Dunn E, Rawstron AC, Emery P, et al. Predicting

- 1 and managing primary and secondary non-response to rituximab using B-cell biomarkers in
2 systemic lupus erythematosus. *Ann Rheum Dis*. 2017 Nov; 76(11):1829-1836.
- 3 30. Furie RA, Morand EF, Bruce IN, Manzi S, Kalunian KC, Vital EM, et al. Type I interferon
4 inhibitor anifrolumab in active systemic lupus erythematosus (TULIP-1): a randomised, controlled,
5 phase 3 trial. *The Lancet Rheumatology*. 2019; 1(4):e208-e219.
- 6 31. Morand EF, Furie R, Tanaka Y, Bruce IN, Askanase AD, Richez C, et al. Trial of Anifrolumab
7 in active systemic lupus erythematosus. *New England Journal of Medicine*. 2019.
- 8 32. Ball EM, Tan AL, Fukuba E, McGonagle D, Grey A, Steiner G, et al. A study of erosive
9 phenotypes in lupus arthritis using magnetic resonance imaging and anti-citrullinated protein
10 antibody, anti-RA33 and RF autoantibody status. *Rheumatology (Oxford, England)*. 2014 Oct;
11 53(10):1835-1843.
- 12 33. Coskun Benlidayi I. Fibromyalgia interferes with disease activity and biological therapy
13 response in inflammatory rheumatic diseases. *Rheumatology International*. 2020 2020/06/01;
14 40(6):849-858.

1 **Legends to Figures**

2 **Figure 1.** Study schematic. All patients followed the same treatment and assessment protocol.
3 Clinical data shown from the first 70 patients was used to decide the primary clinical response
4 variable and thereby calculate statistical power. Additional patients were then recruited to this
5 target. Ultrasound data was not unblinded until all patients were recruited.

6 **Figure 2.** Primary endpoint; clinical response according to baseline ultrasound. A-D show the
7 primary efficacy variable (Early Morning Stiffness VAS at week 2) according to baseline ultrasound
8 status. Horizontal dotted line indicates no difference between ultrasound active and inactive
9 groups. Error bars below this dotted line indicate a better response in ultrasound active patients.
10 Unadjusted values do not account for baseline differences in EMS VAS between ultrasound active
11 and inactive patients. The primary analysis model was adjusted for this baseline difference. The
12 sensitivity analysis was also adjusted for use of NSAIDs, prednisolone and immunosuppressants.
13 E-H show improvement in MSK components of BILAG and SLEDAI according to baseline
14 ultrasound status. Parts E shows percentage of patients with improvement in the musculoskeletal
15 component of the BILAG. Improvement was defined as reduction by at least one grade (i.e. A to B,
16 B to C, or C to D). Part F shows the percentage of patients with improvement in the
17 musculoskeletal items on the SLEDAI (arthritis and myositis, although no patient in this study was
18 scored for myositis). Improvement was therefore defined as resolution of arthritis (reduction from 4
19 points to 0 points).

20 **Figure 3.** Change in LupusQoL physical function domain according to baseline ultrasound status.
21 Horizontal dotted line indicates no difference between ultrasound active and inactive groups. Error
22 bars below this dotted line indicate a better response in ultrasound active patients. Unadjusted
23 values do not account for baseline differences in the physical function score between ultrasound
24 active and inactive patients. A. The primary analysis model was adjusted for this baseline
25 difference. The sensitivity analysis was also adjusted for use of NSAIDs, prednisolone and
26 immunosuppressants. B shows the same analysis for the per-protocol set. C shows the same
27 analysis for the study population excluding patients with fibromyalgia. D shows the same analysis
28 for the per protocol set excluding fibromyalgia.

29

1 **Table 1: Clinical characteristics and ultrasound findings at baseline**

	All patients N=133	US activity at baseline		P value
		Inactive N=55	Active N=78	
Patient disposition				
Completed all study visits per protocol	121/133 (91)	52/55 (95)	69/78 (88)	N/A
Demographics				
Age (years)*	46.1 (13.5)	47.9 (12.3)	44.8 (14.3)	0.190
Disease duration (years)*	9.3 (8.9)	10.2 (9.8)	8.7 (8.1)	0.352
Male	7/133 (5)	0/55 (0)	7/78 (9)	0.022
Therapy				
NSAID or Cox-II inhibitor	27/133 (20)	12/55 (22)	15/78 (19)	0.421
Prednisolone (maximum 5mg/day)	31/133 (23)	12/55 (22)	19/78 (24)	0.733
Antimalarials	89/133 (67)	38/55 (69)	51/78 (65)	0.456
Immunosuppressant (MMF, MTX, AZA)	40/133 (30)	17/55 (31)	23/78 (29)	0.125
Biologic	0 (0)	0 (0)	0 (0)	NA
Inflammatory Features (physician rated)				
EMS	115/133 (86)	47/55 (85)	68/78 (87)	0.775
Distribution	113/133 (85)	43/55 (78)	70/78 (90)	0.066
Symmetry	121/133 (91)	46/55 (84)	75/78 (96)	0.013
Swelling	83/132 (63)	28/54 (52)	55/78 (71)	0.029
Serology	87/130 (67)	31/53 (58)	56/77 (73)	0.090
Other lupus features	66/133 (50)	26/55 (47)	40/78 (51)	0.649
Prior therapy response	87/133 (65)	39/55 (71)	48/78 (62)	0.263
Jaccouds arthropathy	6/133 (5)	2/55 (4)	4/78 (5)	0.683
Deformity	6/133 (5)	2/55 (4)	4/78 (5)	0.683
Other lupus inflammatory	3/133 (2)	2/55 (4)	1/78 (1)	0.368
Fibromyalgia Features				
Overall opinion of fibromyalgia	32/133 (24)	14/55 (25)	18/78 (23)	0.752
Fatigue	30/132 (23)	12/55 (22)	18/77 (23)	0.833
Waking unrefreshed	24/132 (18)	9/55 (16)	15/77 (19)	0.647
Cognitive symptoms	20/132 (15)	7/55 (13)	13/77 (17)	0.511
Other somatic symptoms	15/132 (11)	8/55 (15)	7/77 (9)	0.330
Associated disorders (e.g. IBS)	5/133 (4)	4/55 (7)	1/78 (1)	0.074
Osteoarthritis Features				
Overall opinion of osteoarthritis	36/133 (27)	16/55 (29)	20/78 (26)	0.659
Hard tissue enlargement >1 joint	25/133(19)	13/54 (24)	12/77 (16)	0.224
Hard tissue enlargement DIPs	22/133(17)	11/55 (20)	11/77 (14)	0.385
Deformities consistent with OA	14/133(11)	6/55 (11)	8/77 (10)	0.924
Previous radiographic evidence	10/133(8)	3/54 (6)	7/74 (9)	0.416
Other OA features present	5/133(4)	1/54 (2)	4/78 (5)	0.332
Other musculoskeletal disorders				
Any other MSK disorder	9/133 (7)	4/55	5/78	N/A

2 All data are number of cases (%) and chi-squared tests except where marked *, which indicates mean (SD)
3 and t-tests.

1 **Table 2: Agreement between clinical and ultrasound assessments at baseline**

A: Clinical joint swelling (any joint) versus ultrasound synovitis (hands/wrists)				
n (% of total)	≥1 swollen joints	0 swollen joints	Total	
US inactive (<GS2 and <PD1 all joints)	13 (10%)	42 (32%)	55 (41%)	
US active (≥GS2 or ≥PD1 in ≥1 joint)	53 (40%)	25 (19%)	78 (59%)	
Total	66 (50%)	67 (50%)	133	
B: Clinical joint swelling (hands/wrists) versus ultrasound synovitis (hands/wrists)				
n (% of total)	≥1 swollen joints	0 swollen joints	Total	
US inactive (<GS2 and <PD1 all joints)	6 (4%)	49 (37%)	55 (41%)	
US active (≥GS2 or ≥PD1 in ≥1 joint)	54 (41%)	24 (18%)	78 (59%)	
Total	60 (45%)	73 (55%)	133	
C: SLEDAI-2K arthritis versus ultrasound synovitis				
n (% of total)	Arthritis =Yes	Arthritis = No	Total	
US inactive (<GS2 and <PD1 all joints)	19 (14%)	36 (27%)	55 (41%)	
US active (≥GS2 or ≥PD1 in ≥1 joint)	59 (44%)	19 (14%)	78 (59%)	
Total	78 (59%)	55 (41%)	133	
D: BILAG-2004 musculoskeletal domain versus ultrasound synovitis				
n (% of total)	BILAG A	BILAG B	BILAG C	Total
US inactive (<GS2 and <PD1 all joints)	3 (2%)	10 (7%)	42 (32%)	55 (41%)
US active (≥GS2 or ≥PD1 in ≥1 joint)	11 (8%)	42 (32%)	25 (19%)	78 (59%)
Total	14 (11%)	52 (39%)	67 (50%)	133

2

1 **Table 3:** LupusQoL improvements according to baseline ultrasound status

Variable	2 weeks				6 weeks			
	Adjusted primary		Adjusted sensitivity		Adjusted primary		Adjusted sensitivity	
	Difference (95% CI)	p	Difference (95% CI)	p	Difference (95% CI)	p	Difference (95% CI)	p
All patients (n=133)								
Physical health	-0.45 (-3.93, 3.03)	0.799	-0.57 (-4.10, 2.95)	0.749	-6.57 (-13.27, 0.13)	0.054	-7.25 (-14.48, -0.01)	0.050
Pain	0.65 (-3.84, 5.15)	0.776	1.28 (-3.74, 6.30)	0.616	-5.22 (-13.60, 3.16)	0.218	-3.07 (-10.18, 4.04)	0.395
Planning	-0.17 (-5.35, 5.00)	0.948	-0.14 (-4.58, 4.31)	0.951	-1.75 (-9.93, 6.43)	0.673	-2.22 (-9.63, 5.20)	0.554
Burden to others	-8.33 (-18.45, 1.78)	0.106	-8.33 (-16.68, 0.01)	0.050	-7.54 (-15.27, 0.18)	0.056	-5.67 (-11.68, 0.34)	0.064
Emotional health	0.05 (-3.30, 3.39)	0.978	0.18 (-3.33, 3.68)	0.922	-3.61 (-9.09, 1.88)	0.195	-2.60 (-8.44, 3.24)	0.379
Body image	-0.51 (-6.57, 5.54)	0.867	-0.71 (-7.01, 5.58)	0.823	-8.83 (-16.65, -1.01)	0.027	-7.95 (-15.64, -0.26)	0.043
Fatigue	1.42 (-3.41, 6.26)	0.562	0.86 (-3.04, 4.75)	0.665	-2.56 (-8.15, 3.03)	0.366	-2.78 (-7.95, 2.40)	0.291
No fibromyalgia (n=101)								
Physical health	-1.37 (-5.58, 2.85)	0.514	-0.93 (-5.33, 3.47)	0.671	-7.74 (-14.47, -1.00)	0.025	-7.49 (-12.90, -2.07)	0.008
Pain	5.24 (-2.32, 12.79)	0.167	3.61 (-2.22, 9.43)	0.221	-7.09 (-16.12, 1.93)	0.121	-4.49 (-14.43, 5.44)	0.364
Planning	-8.33 (-13.57, -3.09)	0.002	-7.85 (-12.96, -0.75)	0.003	-1.84 (-10.70, 7.02)	0.682	-1.71 (-9.61, 6.19)	0.670
Burden to others	1.19 (-4.33, 6.70)	0.671	1.57 (-3.64, 6.78)	0.551	-8.36 (-16.05, -0.67)	0.033	-6.68 (-13.28, -0.08)	0.047
Emotional health	0.69 (-6.38, 7.75)	0.846	-1.10 (-10.00, 7.81)	0.805	-2.96 (-9.39, 3.47)	0.366	-0.41 (-6.38, 5.56)	0.893
Body image	1.89 (-3.49, 7.27)	0.486	1.25 (-3.61, 6.10)	0.613	-9.02 (-20.08, 2.03)	0.108	-7.72 (-16.46, 1.02)	0.083
Fatigue	-0.70 (-2.28, 0.89)	0.386	-0.50 (-1.72, 0.72)	0.414	-4.29 (-12.27, 3.68)	0.289	-3.96 (-12.57, 4.64)	0.364

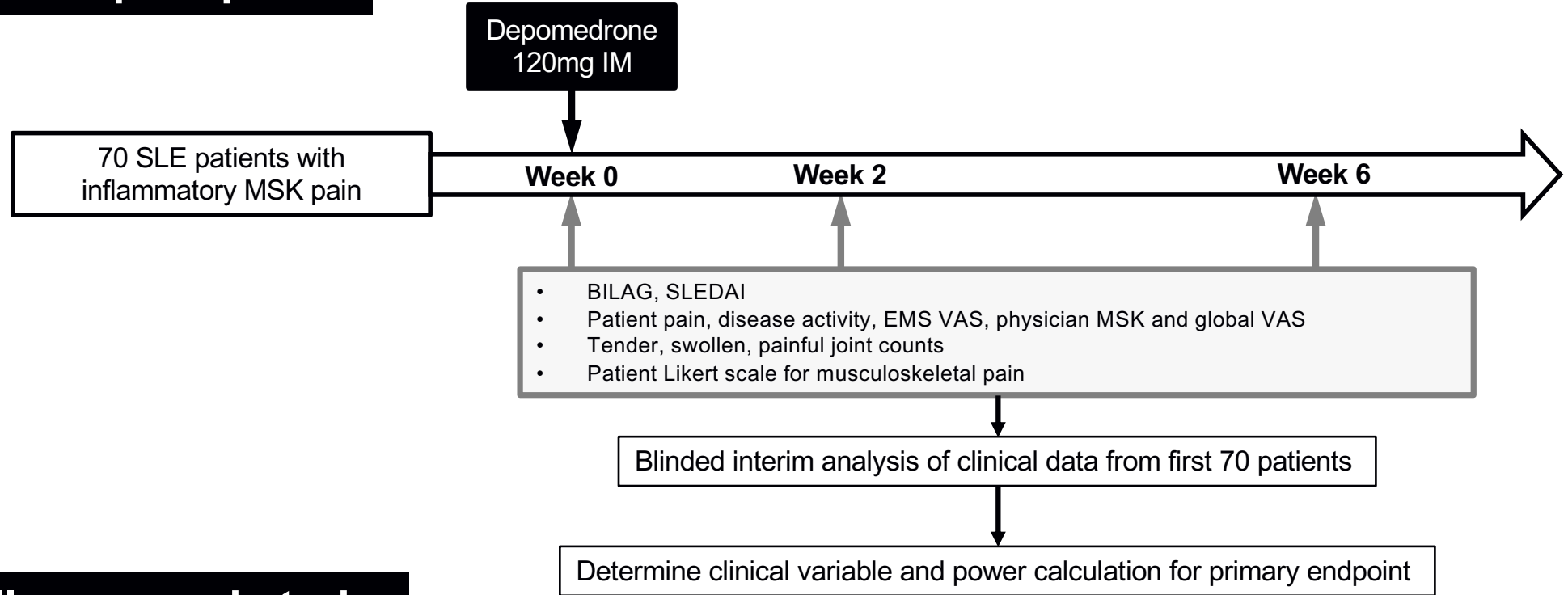
3 Adjusted primary analysis is difference between medians of ultrasound-active and ultrasound-inactive patients, adjusted for baseline value of the outcome variable.

4 Adjusted sensitivity analysis is also adjusted for immunosuppressant and oral glucocorticoid use. Negative values indicate a greater improvement in patients with active ultrasound at baseline. Due to failure of the analysis models to converge, possibly due to the large number of patients who said the domain was not

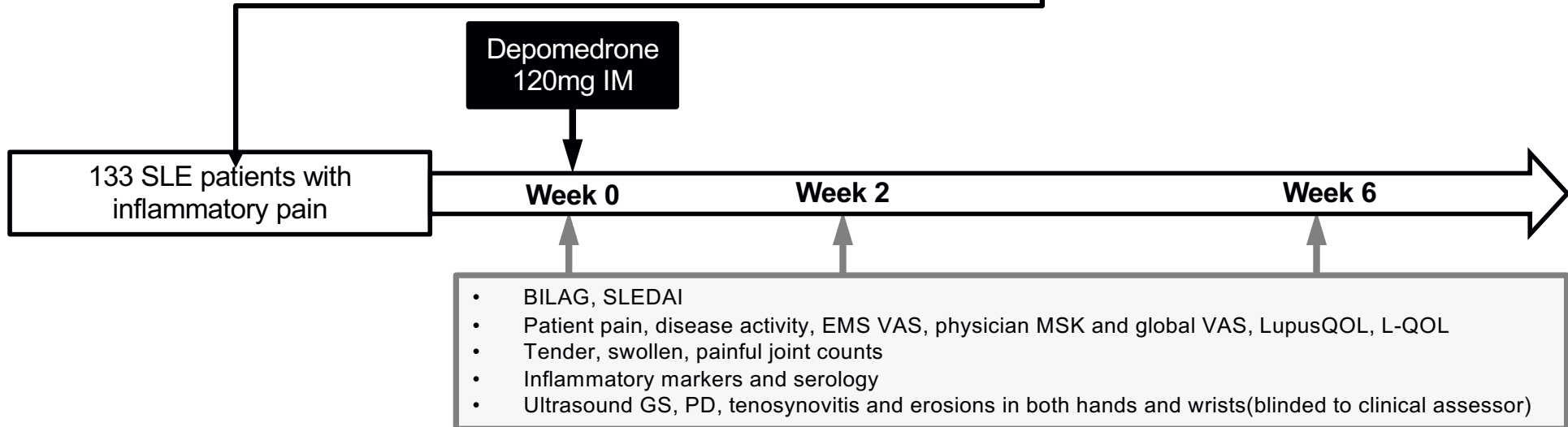
5 applicable, data has not been provided for the LupusQoL domain of Intimate relationship

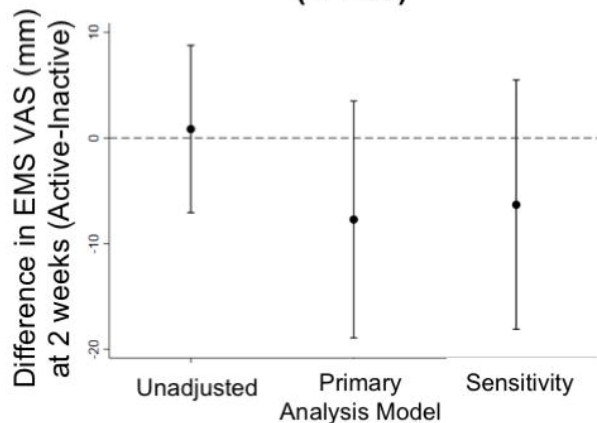
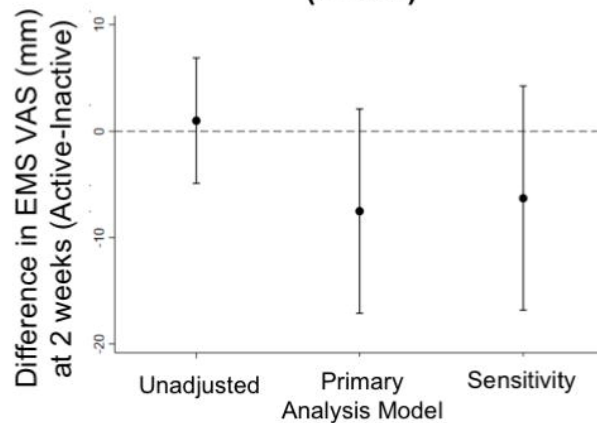
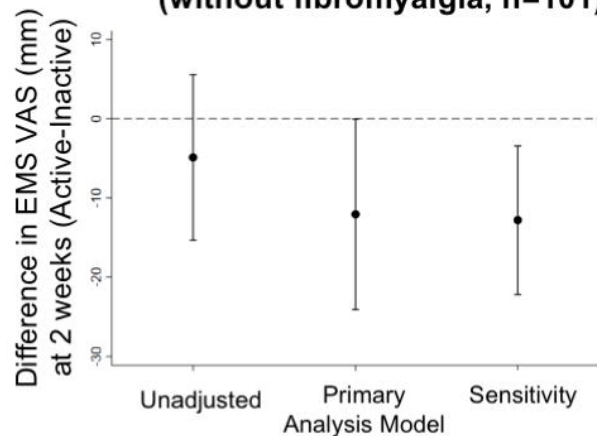
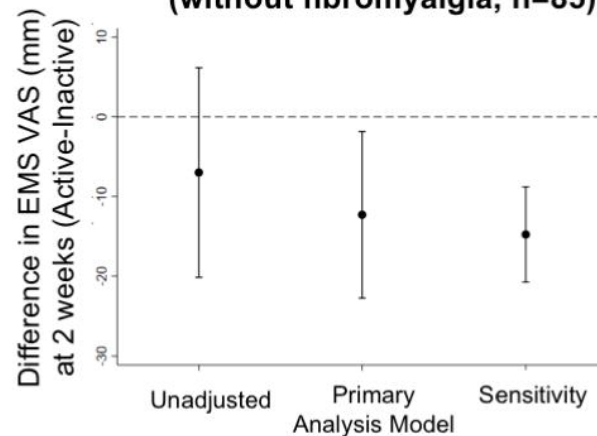
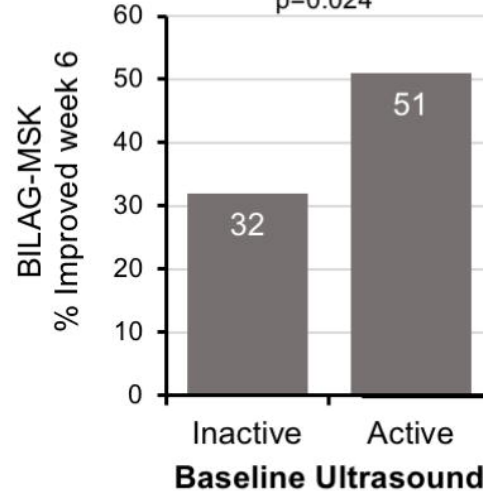
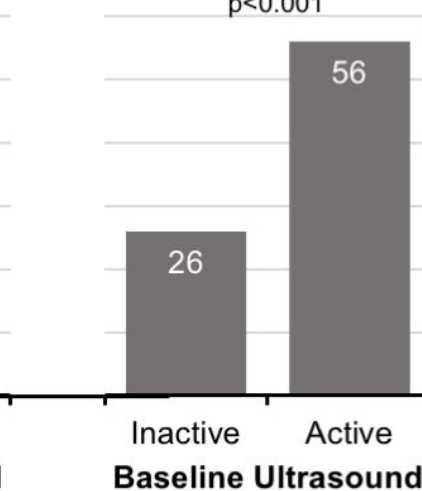
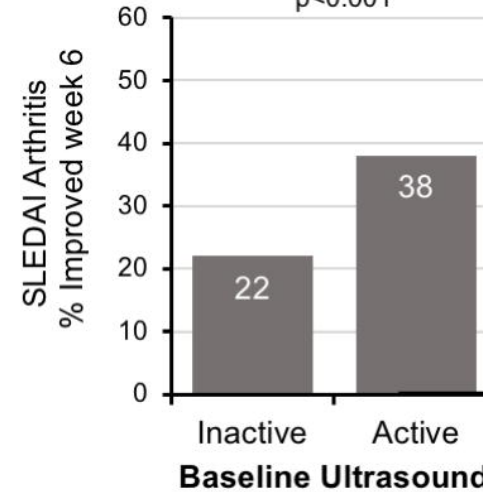
6

Internal pilot phase



Fully powered study



A**Full Analysis Set
(n=133)****B****Per Protocol Set
(n=122)****C****Full analysis set
(without fibromyalgia, n=101)****D****Per protocol set
(without fibromyalgia, n=85)****E****Full Analysis Set**OR 2.15 (1.10, 4.17)
p=0.024**Full Analysis Set
(without fibromyalgia)**OR 3.74 (2.03, 6.90)
p<0.001**F****Full Analysis Set**OR 2.17 (1.41, 3.35)
p<0.001**Full Analysis Set
(without fibromyalgia)**OR 3.24 (1.62, 6.50)
p=0.001