

1 Submission Type: Short Report
2 Abstract word count: **69** Words
3 Main Text Word Count: 1460/1500
4 References: 19/20
5 # Display Items: 3/4

6
7 Online Methods Word Count: 1395
8 Methods References: 13

9
10
11 Supplement Word Count: 342
12 # Supplemental Tables: 3
13 # Supplemental Figures: 1

14
15 **Polygenic Risk Scores for Alcohol Involvement Relate to Brain Structure in Substance-**
16 **Naïve Children: Results from the ABCD Study**

17
18 Alexander S. Hatoum¹, Emma C. Johnson¹, David A.A. Baranger³, Sarah E. Paul², Arpana
19 Agrawal¹, & Ryan Bogdan²

20
21
22 ¹Washington University St. Louis Medical School, Department of Psychiatry; ²Washington
23 University St. Louis, Department of Psychology & Brain Sciences; ³ Department of Psychiatry,
24 University of Pittsburgh Medical Center, Pittsburgh, PA
25
26
27

28

29

30 **ABSTRACT**

31 In substance naïve children (n=3,013), polygenic risk score (PRS) for problematic alcohol use
32 was associated with lower volume of the frontal pole and greater cortical thickness of the
33 supramarginal gyrus. Several other areas showed nominal significance. These associations
34 suggest that genetic liability to alcohol involvement may manifest as variability in brain structure
35 prior to consumption of the first alcoholic drink and alter brain morphometry during the start of
36 adolescence.

37

38 Excessive alcohol use is an escalating international health problem that accounts for over 5% of
39 global deaths and disease burden (World Health Organization, 2018). Alcohol use and use
40 disorders have been reliably associated with magnetic resonance imaging (MRI)-derived brain
41 structure phenotypes, particularly among regions and pathways that feature prominently in
42 executive function, incentive salience, and negative emotionality (Hampton et al., 2019; Mackey
43 et al., 2019). Consistent with evidence from non-human animal models, it is widely speculated
44 that these structural reductions arise as a consequence of chronic alcohol exposure and contribute
45 to the development of alcohol-related comorbidities (e.g., risk taking, Alzheimer's
46 Disease)(Crews, 2008; Yu et al., 2016). However, emerging data challenging this common
47 interpretation suggest that these brain structure correlates may, at least partially, reflect
48 genetically conferred predisposing risk factors for alcohol involvement (Baranger et al., 2019;
49 Robert et al., 2019).

50 Building upon twin and family studies documenting the moderate heritability of alcohol
51 use and use disorders (30-50%) (Verhulst et al., 2015; Walters, 2002), large-scale genome-wide
52 association studies (GWASs) have begun to reliably characterize their polygenic architecture.
53 Polygenic risk scores (PRS) that effectively capture this polygenic liability can be combined with
54 neuroimaging data to investigate whether individual differences in neural phenotypes may be
55 partially attributable to common underlying genomic vulnerability and/or arise following
56 substance exposure, use, and/or problematic use. However, given the ubiquity of lifetime alcohol
57 use, efforts to disentangle such predispositional effects from neurotoxic consequences of chronic
58 exposure have been limited.

59 Here, among 3,013 substance-naïve^a children (age=9.92±0.62 years, 47% Female; 100%
60 genomically-confirmed European ancestry; **Supplemental Table 1**) who completed the baseline
61 session of the ongoing Adolescent Brain Cognitive Development (ABCD) study (data release
62 2.0.1), we test whether PRS for typical alcohol use and problematic use are associated with brain
63 structure phenotypes. To this end, we generated PRS using the largest available GWASs of
64 alcohol use (i.e., alcohol drinks/week [DPW-PRS], training n=537,349) and problematic use
65 (i.e., alcohol use disorder/problem use [PAU-PRS], training n=352,365) and considered MRI-
66 derived brain structure phenotypes that have been previously linked to substance involvement
67 and related phenotypes (i.e., total and regional: cortical thickness, surface area and volume;
68 subcortical volume; white matter volume and integrity). Mixed effects regressions were nested
69 by family and scanner and included the following fixed covariates in all analyses: age, sex, age
70 by sex, first 20 ancestrally-informative PCs, genotyping batch, socioeconomic status proxies
71 (caregiver education, combined family income, and parent marital status were all considered as
72 separate covariates), and prenatal substance exposure. False-discovery rate (FDR) correction
73 within modality (e.g., cortical thickness) was used to adjust for multiple testing. We
74 hypothesized that PRS for typical and problematic alcohol use would be associated with brain
75 structure metrics previously linked to alcohol involvement, even in the absence of alcohol
76 exposure. Further, we expected that variability in brain structure would indirectly link alcohol
77 involvement PRS to related behavioral risk factors (i.e., cognitive performance, internalizing
78 symptoms, externalizing symptoms). Methodological details are provided in **Online Methods**.
79 Results surviving FDR correction are discussed here; all results are presented in the
80 **Supplement**.

^a Children self-reported no substance use (including substances other than alcohol or tobacco) and screened negative according to hair toxicology (see **Supplementary Information for a table of exclusions**). All participants were required to have non-missing data on all variables used in analyses.

81 Consistent with evidence of lower frontal pole gray matter volume among adolescents
82 who drink heavily(Heikkinen et al., 2017), *PAU-PRS* were associated with reduced frontal pole
83 gray matter volume (standardized $\beta = -0.054$, $r^2 = 0.003$, $p_{\text{fdr}} = 0.031$; **Figure 1; Table 1**). Notably,
84 *DPW-PRS* showed a similar pattern of findings, albeit at nominal levels of significance (**Table**
85 **1**); given that typical and problematic alcohol use show similar neural correlates(Paul et al.,
86 2008) and are genetically correlated ($r_g = 0.78$),(Zhou et al., 2020) such consistency is
87 unsurprising. Results from a regression with *PAU-PRS* and *DPW-PRS* entered simultaneously
88 show that this finding is driven primarily by *PAU-PRS* (**Online Methods; Supplementary**
89 **Table 1**). However, unlike other studies showing reduced volume is associated with increased
90 (Gröpper et al., 2016) externalizing behavior, we found no evidence that externalizing or other
91 putative alcohol-related behaviors (e.g., cognitive performance) were associated with frontal
92 pole volume.

93 We also found that *PAU-PRS* were associated with greater supramarginal gyrus cortical
94 thickness (standardized $\beta = 0.009$, $r^2 = 0.001$, $p_{\text{fdr}} = 0.045$; **Figure 1; Table 1**).^b Greater
95 supramarginal gyrus cortical thickness has been found in substance-naïve children of alcohol
96 dependent individuals and temporally predicts the initiation of regular alcohol use during
97 adolescence (Holla et al., 2019; Jacobus et al., 2016). In contrast, lower supramarginal gyrus
98 cortical thickness has been observed among individuals with alcohol dependence (Mackey et al.,
99 2019). Together, this evidence raises the intriguing possibility that some brain structure
100 correlates of alcohol involvement may be developmentally dependent. Indeed, throughout
101 childhood and adolescence neuronal pruning appears to support long term planning, working

^b Analyses in individuals of African ancestry (n=898) using *PAU* GWAS results from an African ancestral discovery (training n= 62,447) yielded no significant associations, presumably due to low power (**Online Methods; Supplemental Table 3**). GWAS summary statistics for Drinks Per Week are not currently available for those of African ancestry.

102 memory performance, language, and attention (Selemon, 2013) and it has been postulated that
103 greater indices of gray matter among those at familial risk for alcohol problems may reflect a
104 developmental delay in neural pruning that places adolescents at risk for substance use, which, in
105 turn, accelerates neuronal pruning in later development (Winters and Arria, 2011). Given that
106 greater cortical thickness of the supramarginal gyrus is present among those at elevated risk for
107 problematic alcohol use and this region supports cognition and language (Stoeckel et al., 2009),
108 this is plausible. However, supramarginal gyrus cortical thickness was not significantly
109 correlated with cognition (**Supplement**); it remains possible that such associations are
110 developmentally dependent and coincide with alcohol experimentation. No brain regions were
111 discovered for typical alcohol use after correction for multiple comparisons (DPW-PRS,
112 supplemental Results).

113 Several other nominally significant associations arose in analyses (**Table 1**). First, the
114 inferior and superior parietal cortex and the insula have been previously associated with
115 substance dependence in large mega-analyses (Mackey et al., 2019), but in the opposite direction
116 of those discovered. This mirrors our findings with the supramarginal gyrus, as the results show
117 opposite patterns in adults, but replicate past findings in adolescence that find these same
118 directions of effect in likelihood of initiation and in familial risk for AUD.(Holla et al., 2019;
119 Jacobus et al., 2016). It is possible that brain regions exerting the most dominant influence may
120 show fluid changes across development, and that individual difference genetics as well as
121 alcohol exposure(Shnitko et al., 2019) may drive developmentally dependent differences.

122 Here, among 3,013 substance-naïve children, we find evidence that alcohol-related
123 differences in brain structure may, at least partially, reflect genetically-conferred predispositional
124 risk factors that precede alcohol exposure. These findings, combined with evidence from humans

125 and non-human animal models challenge widespread speculation that brain-based associations
126 with alcohol are solely attributable to the neurotoxic effects of alcohol (Baranger et al., 2019). It
127 is important to consider the limitations of this study. First, while the study of alcohol and
128 substance naïve children allowed us to preclude that associations may be attributable to alcohol
129 exposure, we were unable to test whether brain structure correlates of genomic risk are
130 associated with onsets of alcohol use and other drinking milestones. As the longitudinal ABCD
131 study continues to collect data, it will be particularly interesting to examine how the interplay
132 between polygenic risk and exposure influence brain structure trajectories, and vice versa (i.e.,
133 how malleability of brain development modulates escalation or desistance in alcohol use).
134 Second, PRS typically have low cross-trait (i.e., from GWAS phenotype to a related phenotype)
135 predictive utility. While our findings suggest that variability in brain structure may represent
136 predispositional biomarkers for alcohol involvement, the small effect sizes (i.e., maximum
137 $R^2=0.003$) and resource intensive nature of neuroimaging limit their clinical utility. Further,
138 these small effects combined with multiple testing burden may have contributed to false
139 negative, and we should not conclude that a null effect here means an association in adults is due
140 to neurotoxicity. Third, as the discovery GWAS were of individuals of predominantly European
141 descent, we restricted our ABCD sample to children of similar ancestral background. Our
142 analyses in the African-ancestry sample of ABCD revealed no significant results (supplemental
143 table 3), likely due to low power of the discovery GWAS of matched ancestry ($N = 62,447$ vs.
144 $352,365$ for the European-ancestry GWAS). This highlights the great need for more non-
145 European discovery samples.

146 Limitations notwithstanding, our study provides initial evidence that alcohol-related brain
147 structure correlates represent genomic risk factors for alcohol involvement. This does not

148 preclude the possibility of neurotoxic effects, as we have not tested the reverse. Rather, this
149 bolsters the argument that genetic vulnerability is conveyed via alterations in brain structure and
150 that these alterations are present during middle childhood.

151

152 Reference Cited

- 153 Achenbach TM, McConaughy SH, Howell CT. 1987. Child/adolescent behavioral and emotional
154 problems: Implications of cross-informant correlations for situational specificity. *Psychol*
155 *Bull* **101**:213–232. doi:10.1037/0033-2909.101.2.213
- 156 Baranger DAA, Demers CH, Elsayed NM, Knodt AR, Radtke SR, Desmarais A, Few LR,
157 Agrawal A, Heath AC, Barch DM, Squeglia LM, Williamson DE, Hariri AR, Bogdan R.
158 2019. Convergent Evidence for Predispositional Effects of Brain Gray Matter Volume on
159 Alcohol Consumption. *Biol Psychiatry*. doi:10.1016/j.biopsych.2019.08.029
- 160 Bates D, Mächler M, Bolker BM, Walker SC. 2015. Fitting linear mixed-effects models using
161 lme4. *J Stat Softw* **67**:1–48. doi:10.18637/jss.v067.i01
- 162 Baurley JW, Edlund CK, Pardamean CI, Conti D V., Bergen AW. 2016. Smokescreen: A
163 targeted genotyping array for addiction research. *BMC Genomics* **17**. doi:10.1186/s12864-
164 016-2495-7
- 165 Bogdan R, Baranger DAA, Agrawal A. 2018. Polygenic Risk Scores in Clinical Psychology:
166 Bridging Genomic Risk to Individual Differences. *Annu Rev Clin Psychol* **14**.
167 doi:10.1146/annurev-clinpsy-050817-084847
- 168 Casey BJ, Cannonier T, Conley MI, Cohen AO, Barch DM, Heitzeg MM, Soules ME, Teslovich
169 T, Dellarco D V., Garavan H, Orr CA, Wager TD, Banich MT, Speer NK, Sutherland MT,
170 Riedel MC, Dick AS, Bjork JM, Thomas KM, Chaarani B, Mejia MH, Hagler DJ, Daniela
171 Cornejo M, Sicat CS, Harms MP, Dosenbach NUF, Rosenberg M, Earl E, Bartsch H, Watts
172 R, Polimeni JR, Kuperman JM, Fair DA, Dale AM. 2018. The Adolescent Brain Cognitive
173 Development (ABCD) study: Imaging acquisition across 21 sites. *Dev Cogn Neurosci*
174 **32**:43–54. doi:10.1016/J.DCN.2018.03.001
- 175 Crews FT. 2008. Alcohol-related neurodegeneration and recovery: mechanisms from animal
176 models. *Alcohol Res Health* **31**:377–88.
- 177 Fischl B, Sereno MI, Tootell RBH, Dale AM. 1999. High-resolution intersubject averaging and a
178 coordinate system for the cortical surface. *Hum Brain Mapp* **8**:272–284.
179 doi:10.1002/(SICI)1097-0193(1999)8:4<272::AID-HBM10>3.0.CO;2-4
- 180 Ge T, Chen CY, Ni Y, Feng YCA, Smoller JW. 2019. Polygenic prediction via Bayesian
181 regression and continuous shrinkage priors. *Nat Commun* **10**:1–10. doi:10.1038/s41467-
182 019-09718-5
- 183 Gershon RC, Wagster M V., Hendrie HC, Fox NA, Cook KF, Nowinski CJ. 2013. NIH toolbox
184 for assessment of neurological and behavioral function. *Neurology* **80**.
185 doi:10.1212/wnl.0b013e3182872e5f
- 186 Gröpper S, Spengler S, Stuke H, Gawron CK, Parnack J, Gutwinski S, Wiers CE, BERPohl F.
187 2016. Behavioral impulsivity mediates the relationship between decreased frontal gray
188 matter volume and harmful alcohol drinking: A voxel-based morphometry study. *J*
189 *Psychiatr Res* **83**:16–23. doi:10.1016/j.jpsychires.2016.08.006
- 190 Hagler DJ, Hatton SN, Cornejo MD, Makowski C, Fair DA, Dick AS, Sutherland MT, Casey BJ,
191 Barch DM, Harms MP, Watts R, Bjork JM, Garavan HP, Hilmer L, Pung CJ, Sicat CS,
192 Kuperman J, Bartsch H, Xue F, Heitzeg MM, Laird AR, Trinh TT, Gonzalez R, Tapert SF,
193 Riedel MC, Squeglia LM, Hyde LW, Rosenberg MD, Earl EA, Howlett KD, Baker FC,
194 Soules M, Diaz J, de Leon OR, Thompson WK, Neale MC, Herting M, Sowell ER, Alvarez
195 RP, Hawes SW, Sanchez M, Bodurka J, Breslin FJ, Morris AS, Paulus MP, Simmons WK,
196 Polimeni JR, van der Kouwe A, Nencka AS, Gray KM, Pierpaoli C, Matochik JA, Noronha

- 197 A, Aklin WM, Conway K, Glantz M, Hoffman E, Little R, Lopez M, Pariyadath V, Weiss
198 SR, Wolff-Hughes DL, DelCarmen-Wiggins R, Feldstein Ewing SW, Miranda-Dominguez
199 O, Nagel BJ, Perrone AJ, Sturgeon DT, Goldstone A, Pfefferbaum A, Pohl KM, Prouty D,
200 Uban K, Bookheimer SY, Dapretto M, Galvan A, Bagot K, Giedd J, Infante MA, Jacobus J,
201 Patrick K, Shilling PD, Desikan R, Li Y, Sugrue L, Banich MT, Friedman N, Hewitt JK,
202 Hopfer C, Sakai J, Tanabe J, Cottler LB, Nixon SJ, Chang L, Cloak C, Ernst T, Reeves G,
203 Kennedy DN, Heeringa S, Peltier S, Schulenberg J, Sripada C, Zucker RA, Iacono WG,
204 Luciana M, Calabro FJ, Clark DB, Lewis DA, Luna B, Schirda C, Brima T, Foxe JJ,
205 Freedman EG, Mruzek DW, Mason MJ, Huber R, McGlade E, Prescott A, Renshaw PF,
206 Yurgelun-Todd DA, Allgaier NA, Dumas JA, Ivanova M, Potter A, Florsheim P, Larson C,
207 Lisdahl K, Charness ME, Fuemmeler B, Hettrema JM, Maes HH, Steinberg J, Anokhin AP,
208 Glaser P, Heath AC, Madden PA, Baskin-Sommers A, Constable RT, Grant SJ, Dowling
209 GJ, Brown SA, Jernigan TL, Dale AM. 2019. Image processing and analysis methods for
210 the Adolescent Brain Cognitive Development Study. *Neuroimage* **202**.
211 doi:10.1016/j.neuroimage.2019.116091
- 212 Hampton WH, Hanik IM, Olson IR. 2019. Substance abuse and white matter: Findings,
213 limitations, and future of diffusion tensor imaging research. *Drug Alcohol Depend.*
214 doi:10.1016/j.drugalcdep.2019.02.005
- 215 Heikkinen N, Niskanen E, Könönen M, Tolmunen T, Kekkonen V, Kivimäki P, Tanila H,
216 Laukkanen E, Vanninen R. 2017. Alcohol consumption during adolescence is associated
217 with reduced grey matter volumes. *Addiction* **112**:604–613. doi:10.1111/add.13697
- 218 Holla B, Bharath RD, Venkatasubramanian G, Benegal V. 2019. Altered brain cortical
219 maturation is found in adolescents with a family history of alcoholism. *Addict Biol* **24**:835–
220 845. doi:10.1111/adb.12662
- 221 Jacobus J, Castro N, Squeglia LM, Meloy MJ, Brumback T, Huestis MA, Tapert SF. 2016.
222 Adolescent cortical thickness pre- and post marijuana and alcohol initiation. *Neurotoxicol*
223 *Teratol.* doi:10.1016/j.ntt.2016.09.005
- 224 Lam M, Awasthi S, Watson HJ, Goldstein J, Panagiotaropoulou G, Trubetsky V, Karlsson R,
225 Frei O, Fan C-C, Witte W De, Mota NR, Mullins N, Skarabis N, Huang H, Neale B, Daly
226 M, Mattheissen M, Walters R, Ripke S. 2019. RICOPILI: Rapid Imputation for COnsortias
227 PIpeLine. *bioRxiv* 587196. doi:10.1101/587196
- 228 Liu M, Jiang Y, Wedow R, Li Y, Brazel DM, Chen F, Datta G, Davila-Velderrain J, McGuire D,
229 Tian C, Zhan X, Agee M, Alipanahi B, Auton A, Bell RK, Bryc K, Elson SL, Fontanillas P,
230 Furlotte NA, Hinds DA, Hromatka BS, Huber KE, Kleinman A, Litterman NK, McIntyre
231 MH, Mountain JL, Northover CAM, Sathirapongsasuti JF, Sazonova O V., Shelton JF,
232 Shringarpure S, Tung JY, Vacic V, Wilson CH, Pitts SJ, Mitchell A, Skogholt AH,
233 Winsvold BS, Sivertsen B, Stordal E, Morken G, Kallestad H, Heuch I, Zwart JA, Fjukstad
234 KK, Pedersen LM, Gabrielsen ME, Johnsen MB, Skrove M, Indredavik MS, Drange OK,
235 Bjerkeset O, Børte S, Stensland SØ, Choquet H, Docherty AR, Faul JD, Foerster JR,
236 Fritsche LG, Gordon SD, Haessler J, Hottenga JJ, Huang H, Jang SK, Jansen PR, Ling Y,
237 Mägi R, Matoba N, McMahan G, Mulas A, Orrù V, Palviainen T, Pandit A, Reginsson GW,
238 Smith JA, Taylor AE, Turman C, Willemsen G, Young H, Young KA, Zajac GJM, Zhao W,
239 Zhou W, Bjornsdottir G, Boardman JD, Boehnke M, Boomsma DI, Chen C, Cucca F,
240 Davies GE, Eaton CB, Ehringer MA, Esko T, Fiorillo E, Gillespie NA, Gudbjartsson DF,
241 Haller T, Harris KM, Heath AC, Hewitt JK, Hickie IB, Hokanson JE, Hopfer CJ, Hunter
242 DJ, Iacono WG, Johnson EO, Kamatani Y, Kardina SLR, Keller MC, Kellis M, Kooperberg

- 243 C, Kraft P, Krauter KS, Laakso M, Lind PA, Loukola A, Lutz SM, Madden PAF, Martin
244 NG, McGue M, McQueen MB, Medland SE, Metspalu A, Mohlke KL, Nielsen JB, Okada
245 Y, Peters U, Polderman TJC, Posthuma D, Reiner AP, Rice JP, Rimm E, Rose RJ,
246 Runarsdottir V, Stallings MC, Stančáková A, Stefansson H, Thai KK, Tindle HA,
247 Tyrfinngsson T, Wall TL, Weir DR, Weisner C, Whitfield JB, Yin J, Zuccolo L, Bierut LJ,
248 Hveem K, Lee JJ, Munafò MR, Saccone NL, Willer CJ, Cornelis MC, David SP, Jorgenson
249 E, Kaprio J, Stitzel JA, Stefansson K, Thorgeirsson TE, Abecasis G, Liu DJ, Vrieze S.
250 2019. Association studies of up to 1.2 million individuals yield new insights into the genetic
251 etiology of tobacco and alcohol use. *Nat Genet.* doi:10.1038/s41588-018-0307-5
- 252 Mackey S, Allgaier N, Chararani B, Spechler P, Orr C, Bunn J, Allen NB, Alia-Klein N, Batalla
253 A, Blaine S, Brooks S, Caparelli E, Chye YY, Cousijn J, Dagher A, Desrivieres S,
254 Feldstein-Ewing S, Foxe JJ, Goldstein RZ, Goudriaan AE, Heitzeg MM, Hester R,
255 Hutchison K, Korucuoglu O, Li C-SR, London E, Lorenzetti V, Luijten M, Martin-Santos
256 R, May A, Momenan R, Morales A, Paulus MP, Pearlson G, Rousseau M-E, Salmeron BJ,
257 Schluter R, Schmaal L, Schumann G, Sjoerds Z, Stein DJ, Stein EA, Sinha R, Solowij N,
258 Tapert S, Uhlmann A, Veltman D, van Holst R, Whittle S, Wiers R, Wright MJ, Yücel M,
259 Zhang S, Yurgelun-Todd D, Hibar DP, Jahanshad N, Evans A, Thompson PM, Glahn DC,
260 Conrod P, Garavan H. 2019. Mega-Analysis of Gray Matter Volume in Substance
261 Dependence: General and Substance-Specific Regional Effects. *Am J Psychiatry* **176**:119–
262 128. doi:10.1176/appi.ajp.2018.17040415
- 263 Muthén & Muthén. 2017. Mplus Users Manual.
- 264 Paul CA, Au R, Fredman L, Massaro JM, Seshadri S, DeCarli C, Wolf PA. 2008. Association of
265 alcohol consumption with brain volume in the Framingham study. *Arch Neurol* **65**:1363–
266 1367. doi:10.1001/archneur.65.10.1363
- 267 Robert GH, Luo Q, Yu T, Chu C, Ing A, Jia T, Papadopoulos Orfanos D, Burke-Quinlan E,
268 Desrivieres S, Ruggeri B, Spechler P, Chararani B, Tay N, Banaschewski T, Bokde ALW,
269 Bromberg U, Flor H, Frouin V, Gowland P, Heinz A, Ittermann B, Martinot JL, Paillère
270 Martinot ML, Nees F, Poustka L, Smolka MN, Vetter NC, Walter H, Whelan R, Conrod P,
271 Barker T, Garavan H, Schumann G. 2019. Association of Gray Matter and Personality
272 Development with Increased Drunkenness Frequency during Adolescence. *JAMA*
273 *Psychiatry*. doi:10.1001/jamapsychiatry.2019.4063
- 274 Sanchez-Roige S, Palmer AA, Fontanillas P, Elson SL, Adams MJ, Howard DM, Edenberg HJ,
275 Davies G, Crist RC, Deary IJ, McIntosh AM, Clarke T-K, Clarke T-K. 2019. Genome-Wide
276 Association Study Meta-Analysis of the Alcohol Use Disorders Identification Test
277 (AUDIT) in Two Population-Based Cohorts. *Am J Psychiatry* **176**:107–118.
278 doi:10.1176/appi.ajp.2018.18040369
- 279 Selemon LD. 2013. A role for synaptic plasticity in the adolescent development of executive
280 function. *Transl Psychiatry*. doi:10.1038/tp.2013.7
- 281 Shnitko TA, Liu Z, Wang X, Grant KA, Kroenke CD. 2019. Chronic alcohol drinking slows
282 brain development in adolescent and young adult nonhuman primates. *eNeuro* **6**.
283 doi:10.1523/ENEURO.0044-19.2019
- 284 Stoeckel C, Gough PM, Watkins KE, Devlin JT. 2009. Supramarginal gyrus involvement in
285 visual word recognition. *Cortex* **45**:1091–1096. doi:10.1016/j.cortex.2008.12.004
- 286 Verhulst B, Neale MC, Kendler KS. 2015. The heritability of alcohol use disorders: A meta-
287 analysis of twin and adoption studies. *Psychol Med* **45**:1061–1072.
288 doi:10.1017/S0033291714002165

- 289 Walters GD. 2002. THE HERITABILITY OF ALCOHOL ABUSE AND DEPENDENCE: A
290 META-ANALYSIS OF BEHAVIOR GENETIC RESEARCH. *Am J Drug Alcohol Abuse*
291 **28**:557–584. doi:10.1081/ADA-120006742
- 292 Walters RK, Polimanti R, Johnson EC, McClintick JN, Adams MJ, Adkins AE, Aliev F, Bacanu
293 SA, Batzler A, Bertelsen S, Biernacka JM, Bigdeli TB, Chen LS, Clarke TK, Chou YL,
294 Degenhardt F, Docherty AR, Edwards AC, Fontanillas P, Foo JC, Fox L, Frank J, Giegling
295 I, Gordon S, Hack LM, Hartmann AM, Hartz SM, Heilmann-Heimbach S, Herms S,
296 Hodgkinson C, Hoffmann P, Jan Hottenga J, Kennedy MA, Alanne-Kinnunen M, Konte B,
297 Lahti J, Lahti-Pulkkinen M, Lai D, Ligthart L, Loukola A, Maher BS, Mbarek H, McIntosh
298 AM, McQueen MB, Meyers JL, Milaneschi Y, Palviainen T, Pearson JF, Peterson RE,
299 Ripatti S, Ryu E, Saccone NL, Salvatore JE, Sanchez-Roige S, Schwandt M, Sherva R,
300 Streit F, Strohmaier J, Thomas N, Wang JC, Webb BT, Wedow R, Wetherill L, Wills AG,
301 Agee M, Alipanahi B, Auton A, Bell RK, Bryc K, Elson SL, Fontanillas P, Furlotte NA,
302 Hinds DA, Huber KE, Kleinman A, Litterman NK, McCreight JC, McIntyre MH, Mountain
303 JL, Noblin ES, Northover CAM, Pitts SJ, Sathirapongsasuti JF, Sazonova O V., Shelton JF,
304 Shringarpure S, Tian C, Tung JY, Vacic V, Wilson CH, Boardman JD, Chen D, Choi DS,
305 Copeland WE, Culverhouse RC, Dahmen N, Degenhardt L, Domingue BW, Elson SL, Frye
306 MA, Gäbel W, Hayward C, Ising M, Keyes M, Kiefer F, Kramer J, Kuperman S, Lucae S,
307 Lynskey MT, Maier W, Mann K, Männistö S, Müller-Myhsok B, Murray AD, Nurnberger
308 JI, Palotie A, Preuss U, Rääkkönen K, Reynolds MD, Ridinger M, Scherbaum N, Schuckit
309 MA, Soyka M, Treutlein J, Witt S, Wodarz N, Zill P, Adkins DE, Boden JM, Boomsma DI,
310 Bierut LJ, Brown SA, Bucholz KK, Cichon S, Costello EJ, de Wit H, Diazgranados N, Dick
311 DM, Eriksson JG, Farrer LA, Foroud TM, Gillespie NA, Goate AM, Goldman D, Grucza
312 RA, Hancock DB, Harris KM, Heath AC, Hesselbrock V, Hewitt JK, Hopfer CJ, Horwood
313 J, Iacono W, Johnson EO, Kaprio JA, Karpyak VM, Kendler KS, Kranzler HR, Krauter K,
314 Lichtenstein P, Lind PA, McGue M, MacKillop J, Madden PAF, Maes HH, Magnusson P,
315 Martin NG, Medland SE, Montgomery GW, Nelson EC, Nöthen MM, Palmer AA, Pedersen
316 NL, Penninx BWJH, Porjesz B, Rice JP, Rietschel M, Riley BP, Rose R, Rujescu D, Shen
317 PH, Silberg J, Stallings MC, Tarter RE, Vanyukov MM, Vrieze S, Wall TL, Whitfield JB,
318 Zhao H, Neale BM, Gelernter J, Edenberg HJ, Agrawal A. 2018. Transancestral GWAS of
319 alcohol dependence reveals common genetic underpinnings with psychiatric disorders. *Nat*
320 *Neurosci* **21**:1656–1669. doi:10.1038/s41593-018-0275-1
- 321 Winters KC, Arria A. 2011. Adolescent Brain Development and Drugs. *Prev Res* **18**:21–24.
- 322 World Health Organization. 2018. Global status report on alcohol and health 2018. Geneva:
323 World Health Organization; 2018. Licence: CC BY-NC-SA 3.0 IGO.
- 324 Yu R, Deochand C, Krotow A, Le’ao R, Tong M, Agarwal AR, Cadenas E, De La Monte SM.
325 2016. Tobacco Smoke-Induced Brain White Matter Myelin Dysfunction: Potential Co-
326 Factor Role of Smoking in Neurodegeneration. *J Alzheimer’s Dis* **50**:133–148.
327 doi:10.3233/JAD-150751
- 328 Zhou H, Sealock JM, Sanchez-Roige S, Clarke T-K, Levey DF, Cheng Z, Li B, Polimanti R,
329 Kember RL, Smith RV, Thygesen JH, Morgan MY, Atkinson SR, Thursz MR, Nyegaard
330 M, Mattheisen M, Børglum AD, Johnson EC, Justice AC, Palmer AA, McQuillin A, Davis
331 LK, Edenberg HJ, Agrawal A, Kranzler HR, Gelernter J. 2020. Genome-wide meta-analysis
332 of problematic alcohol use in 435,563 individuals yields insights into biology and
333 relationships with other traits. *Nat Neurosci* 1–10. doi:10.1038/s41593-020-0643-5
334

336 Table 1. Nominally significant results for the PAU and DPW PRS Prediction

PAU				
Modality	Region	Beta	STE	Nominal P-value
Area	Right Insula	0.027	0.014	0.046
Area	Right Pars Triangularis	0.035	0.016	0.033
Thickness	Left Pars Orbitalis	-0.031	0.016	0.049
Thickness	Left Pars Opercularis	-0.028	0.014	0.043
Thickness	Right Lateral Orbital Frontal Gyrus	-0.035	0.015	0.017
Thickness	Right Supramarginal Gyrus	0.032	0.010	0.001*
Volume	Left Frontal Pole	-0.057	0.017	0.001*
fractional anisotropy	right anterior thalamic radiations	-0.024	0.012	0.046
fractional anisotropy	left anterior thalamic radiations	-0.025	0.012	0.030
White Matter volume	Corpus Callosum	-0.010	0.005	0.045
White Matter volume	Right Parahippocampal cingulum	-0.030	0.014	0.041
White Matter volume	Forceps Minor	-0.023	0.009	0.014
DPW				
Area	Right Insula	0.031	0.014	0.023
Area	Left Superior Parietal Gyrus	-0.033	0.013	0.013
Thickness	Right Inferior Parietal Gyrus	0.024	0.010	0.012
Thickness	Right Pericalcarine Cortex	-0.034	0.016	0.039
Thickness	Right Temporal Pole	-0.033	0.017	0.048
Volume	Right Entorhinal Cortex	-0.047	0.018	0.008
Volume	Left Insula	0.029	0.013	0.024
Volume	Right Insula	0.027	0.013	0.039
Volume	Left Superior Parietal Gyrus	-0.029	0.014	0.044
Volume	Left Frontal Pole	-0.034	0.017	0.049
Volume	Left Pallidum	-0.030	0.015	0.049
Mean Diffusivity	Right Parahippocampal Cingulum	-0.033	0.016	0.041
Mean Diffusivity	Right Inferior Longitudinal Fasciculus	0.029	0.013	0.029

337 **Note.** Nominal significant results shown by region across all modalities. STE= Standard Error.

338 * = Area was significant after FDR correction.

339

340
341
342 Table 2. Problematic Alcohol Use (PAU) and Drinks Per Week (DPW) PRS Prediction of Top
343 Outcomes in Multiple Linear Model, Accounting for the Other PRS

Region	PAU Beta	PAU P-value	PAU CI	DPW Beta	DPW P-Value	DPW CI
Frontal Pole	-0.0522	0.0060	±0.0371	-0.0129	0.0191	±0.9786
Supramarginal Gyrus	0.0331	0.0025	±0.0355	-0.0034	0.7575	±0.0213

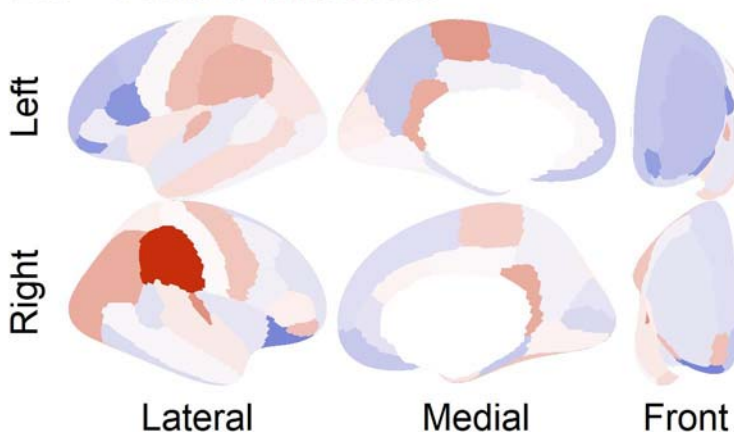
344 **Note.** Both the PAU and DPW Polygenic Risk Scores (PRS) were entered as covariates in the
345 same linear mixed effects model to test whether prediction of each outcome was specific to
346 polygenic risk for each alcohol behavior. The standardized beta weights, p-values and
347 confidence intervals around the beta were drawn from the mixed effects regression model. **Bold**
348 values are those significant in the multiple regression.
349

350 **The Mllion Veterans Project summary statistics were accessed via dbGaP**
351 **(phs001672.v1.p1) as part of #24806: Neurobiological bases of psychiatric traits.** The
352 authors thank Million Veteran Program (MVP) staff, researchers, and volunteers, who have
353 contributed to MVP, and especially participants who previously served their country in the
354 military and now generously agreed to enroll in the study. (See
355 <https://www.research.va.gov/mvp/> for more details).
356 The citation for MVP is Gaziano, J.M. et al. Million Veteran Program: A mega-biobank to study
357 genetic influences on health and disease. *J Clin Epidemiol* 70, 214-23 (2016).
358 This research is based on data from the Million Veteran Program, Office of Research and
359 Development, Veterans Health Administration, and was supported by the Veterans
360 Administration (VA) Cooperative Studies Program (CSP) award #G002.

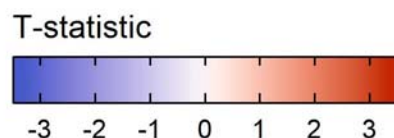
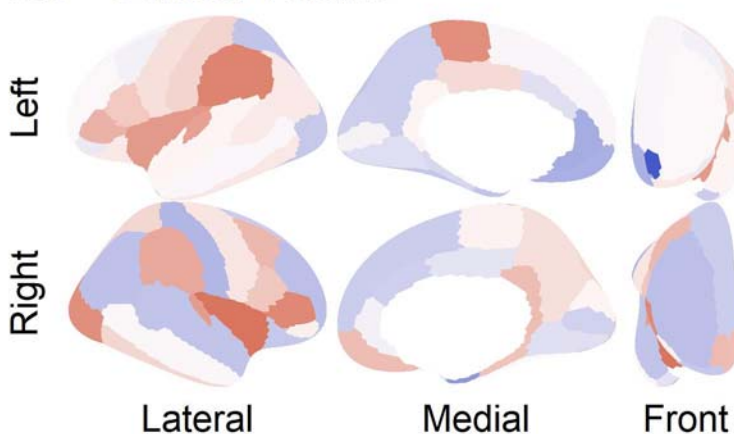
361 ASH receives support from DA007261-17. ECJ receives support from AA027435-02. AA
362 receives support from MH109532 and K02DA032573. DAAB receives support from
363 MH018951. Dr. Bogdan (AG052564, AA027827, DA046224). ASH, ECJ, AA, and RB
364 developed the research questions. ASH conducted analyses, with help from ECJ, DAAB, and
365 SEP. ASH and RB drafted the manuscript. ECJ, AA, DAAB, and SEP provided critical revision
366 of the manuscript for important intellectual content. ASH had full access to all data in the study
367 and take responsibility for the integrity of the data and accuracy of the data analyses. Conflict of
368 interest disclosures: No disclosures were reported.

369
370
371
372

PAU - Cortical Thickness



PAU - Cortical Volume



373
374

375
376

377 *Figure 1.* Results of polygenic risk prediction for Problematic Alcohol Use (PAU) plotted on the
378 cortex. The results are shown for those modalities that had significant regions in the Desikan
379 atlas after controlling for mean of the modality, prenatal alcohol exposure, age, sex, age by sex,
380 first 20 principal components, SES, and accounting for family and site as random nested effects.
381 Red indicates areas where higher PAU polygenic risk predicted more of that modality. In the top
382 panel, we focus on supramarginal gyrus cortical thickness prediction by PRS, as this association
383 was significant after multiple corrections. In the bottom panel, we focus on volume of the
384 temporal pole, as this was significantly associated with PAU PRS after multiple correction.

385
386

387 Online Methods

388 **Sample**

389 The Adolescent Brain and Cognitive Development Study (ABCD) is an ongoing multi-site
390 longitudinal study of child health and development. Children (N=11,875), ages 8.9-11 recruited
391 from 22^c sites across the nation, completed a baseline assessment of child behavior, health and
392 cognitive assessment. The study included a twin design, in which 2,108 participants were twins
393 and 30 were triplets. For our analyses, the sample was restricted to those of genomically-
394 confirmed European ancestry (n=4,737 using stringent criteria; details below) who self-reported
395 no exposure to substances and screened negative for substances according to hair toxicology,
396 leaving a final analytic sample (n=3,434 individuals, mean age =9.92 years, std age = 0.62, 47 %
397 Female, n=3,013 with no missing data).

398 **Measures**

399 **Brain Structure. MRI Acquisition and Processing.** Of the 11,875 ABCD participants, 11,556
400 have structural MRI data. A detailed description of the ABCD Study imaging acquisition
401 protocol and parameters can be found in Casey et al. (2018)(Casey et al., 2018). Briefly, 3 T
402 (Siemens, Phillips and GE) MRI scanners were used to obtain 1 mm isotropic T1-weighted
403 structural, using either a 32-channel head or 64-channel head-and-neck coil. In order to minimize
404 variability across scanners, MRI scan protocols were carefully harmonized across the three MRI
405 vendor platforms. Because head motion is more common in imaging of pediatric populations,
406 real-time motion detection and correction were implemented to mitigate this concern
407 (prospective motion correction on the GE and Volumetric Navigators on the Siemens platforms).

^c Cornell University was an original collection site that collected data from 34 participants, before being moved to Yale University. ABCD documentation reports 21 data collection sites and does not list Cornell; our analyses nested data based on 22 data collection sites, including the original Cornell site.

408 A detailed description of ABCD Study image processing and analysis methodology can
409 be found in Hagler et al., (2019). The Multi-Modal Processing Stream software package, which
410 includes FreeSurfer 5.3, was used to process MRI data. The ABCD processing pipeline specifies
411 a modified intensity normalization process, and the standard FreeSurfer cortical and subcortical
412 reconstruction pipeline was implemented in addition to generate structural measures such as
413 volume and cortical thickness. Hagler et al. (2019) provides a comprehensive description of the
414 quality-control measures conducted on the processed imaging data. Only participants whose
415 structural MRI reconstructions passed these QC tests (n=11,076) were retained. Cortical gray
416 matter volume, thickness, and surface area aligned to the Desikan atlas and white matter volume,
417 mean diffusivity and fractional anisotropy along AtlasTrack were extracted from ABCD data
418 release 2.0.1, which rectified an issue with data release 2.0 with regard to the laterality of data in
419 some participants.

420 We extracted estimates separately per hemisphere. Further, for cortical gray matter we
421 chose to include cortical thickness, surface area and volume aligned to the Desikan atlas through
422 the Freesurfer protocol because this method better distinguishes white and gray matter than
423 traditional VBM approaches (Fischl et al., 1999). We ran models using the Desikan atlas
424 parcellation for the cortex, within each hemisphere (34 brain regions). For white matter
425 modalities, we used fractional anisotropy and mean diffusivity because they represent the
426 primary components of many different white matter metrics obtain from Diffusion Tensor
427 imaging and they are the most commonly used for imaging research.

428 ***Genotyping, Quality Control, and Imputation.*** The Rutgers University Cell and DNA repository
429 genotyped saliva samples on the Smokescreen array (Baurley et al., 2016). Genotyped calls were
430 aligned to GRCh37 (hg19), and all individuals self-reporting ancestral origins (i.e., self-reported

431 race) other than Europeans or African Americans were excluded because these were the only
432 ancestral populations in which GWAS summary statistics are available and evidence that the
433 predictive utility of polygenic risk scores suffers when applied across ancestral origins (Bogdan
434 et al., 2018). we separated individuals into self-reported populations before genotype QC. QC
435 steps also were used to confirm that individuals belonged to these ethnic groups using their
436 genomic data.

437 The following preprocessing steps were conducted with the Ricopili pipeline (Lam et al.,
438 2019): SNPs with call rates ≥ 0.95 and MAF $\geq 1\%$ were retained. Individuals with high rates of
439 missingness ($>5\%$) and autosomal heterozygosity deviation (F_{HET}) outside of ± 2 SD were
440 removed. After sample QC, SNPs were further filtered to call rate ≥ 0.98 and Hardy-Weinberg p-
441 values $> 1E-6$ (founders only), which yielded 372,342 SNPs. In order to reconcile mismatches,
442 sex checks were conducted with follow-up.

443 Individuals whose data passed the first phase of QC were then checked for relatedness--
444 both known and cryptic--and Mendelian errors were resolved. Next, using data from unrelated
445 individuals ($\pi\text{-hat} \leq 0.20$) and an LD pruned set of common (MAF >0.05) and non-palindromic
446 SNPs (and excluding MHC and chromosome 8 inversion region), principal components analysis
447 (PCA) was performed in EIGENSTRAT using the European 1000 Genomes Project phase 3
448 data. Only those individuals whose data aligned with ancestral non-Hispanic European ancestry
449 were retained, yielding a sample of 4,737. Due to the sensitivity of the PRS approach to
450 admixture, we took a conservative approach and performed stringent exclusion for ancestral
451 outliers, consistent with the Psychiatric Genomics Consortium's Ricopili pipeline (Lam et al.,
452 2019). After selection, a final ancestrally-informative PCA was conducted, and the first 20 PCs
453 were projected from founders to other relatives. Imputation to 1000 Genomes and Haplotype

454 Reference Consortium (HRC) data for Europeans and KAPPA for African Americans was
455 conducted using strictly QCed SNPs on the Michigan Imputation Server, yielding 39,127,678
456 SNPs. Dosage data were converted to hard-call genotypes using Plink, and only SNPs with
457 imputation r^2 scores ≥ 0.3 were used to create polygenic scores.

458

459 **Polygenic Risk Scores**

460 Polygenic Risk Scores (PRS) were generated using the PRS-cs software package (Ge et al.,
461 2019). The PRS-cs auto approach calculates PRS by assuming a general distribution of effect
462 sizes across the genome, and then reweighting SNPs based off of this assumption, their effect
463 size in the original GWAS, and their linkage disequilibrium (LD) patterns to create weights for
464 every SNP that are then summed for a final score. We chose PRS-cs auto because we wanted to
465 avoid the potential over-fitting to one particular PRS threshold and multiple-testing burdens of
466 P+T, as well as the potential gain of using ALL SNPs, rather than only SNPs below an arbitrary
467 p-value cutoff. Our models were trained using two well-powered GWAS from major consortia,
468 specifically Drinks per week (DPW, original GWAS N=537,349 (Liu et al., 2019)) and a
469 problematic alcohol use (PAU) meta-analysis of GWASs of alcohol use disorder (specifically,
470 alcohol dependence from the Psychiatric Genomics Consortium (Walters et al., 2018) and ICD
471 codes for alcohol use disorder from the Million Veteran Program (Zhou et al., 2020) and a
472 GWAS of scores on the problem subscale of the Alcohol Use Disorders Identification Test
473 (AUDIT-P)(Sanchez-Roige et al., 2019) (Original GWAS N=352,391) from the UK Biobank.
474 We chose to use both DPW-PRS and PAU-PRS because of past work that shows genetic
475 separability in use and use disorder for drinking (Walters et al., 2018).

476

477 **Behavioral Measures**

478 For each discovered brain region, we ran a test of the association between that brain region and
479 cognitive ability, as indexed by full-scale IQ, fluid reasoning, crystallized reasoning, as well as
480 internalizing and externalizing symptoms. Measures for IQ were from the NIH Toolbox
481 (Gershon et al., 2013), and internalizing and externalizing scales were taken from the Child
482 Behavior Checklist (CBCL) (Achenbach et al., 1987).

483
484 **Statistical Analysis**

485 We associated each PRS with each brain region with a mixed-effects model estimated in the
486 lme4 (Bates et al., 2015) package in R. To account for non-independence of individuals due to
487 clustering in families and to account for scanner-specific effects at each site, we nested data by
488 family and scanner MRI serial number as random effects. We controlled for the first 20 ancestry
489 principal components, mean of each modality (separately when predicting regions of that
490 modality, i.e., mean thickness predicting regional thickness, mean surface area predicting
491 regional surface area), prenatal exposure, age, sex, age by sex, caregiver education, combined
492 caregiver income and batch as fixed effects in each model. We removed genotyping batch 461
493 as well as 111 individuals who did not pass quality control on recommendation from the ABCD
494 project. We ran a test of association within each modality and separately for each brain region
495 with each PRS. We corrected our results for multiple comparisons by using FDR across all brain
496 measures within a modality (Gray matter cortex = 34 regions, white matter = 36 tracts, subcortex
497 = 26 regions).

498

- 499
- 500 Methods References
- 501 Achenbach TM, McConaughy SH, Howell CT. 1987. Child/adolescent behavioral and emotional
502 problems: Implications of cross-informant correlations for situational specificity. *Psychol*
503 *Bull* **101**:213–232. doi:10.1037/0033-2909.101.2.213
- 504 Baranger DAA, Demers CH, Elsayed NM, Knodt AR, Radtke SR, Desmarais A, Few LR,
505 Agrawal A, Heath AC, Barch DM, Squeglia LM, Williamson DE, Hariri AR, Bogdan R.
506 2019. Convergent Evidence for Predispositional Effects of Brain Gray Matter Volume on
507 Alcohol Consumption. *Biol Psychiatry*. doi:10.1016/j.biopsych.2019.08.029
- 508 Bates D, Mächler M, Bolker BM, Walker SC. 2015. Fitting linear mixed-effects models using
509 lme4. *J Stat Softw* **67**:1–48. doi:10.18637/jss.v067.i01
- 510 Baurley JW, Edlund CK, Pardamean CI, Conti D V., Bergen AW. 2016. Smokescreen: A
511 targeted genotyping array for addiction research. *BMC Genomics* **17**. doi:10.1186/s12864-
512 016-2495-7
- 513 Bogdan R, Baranger DAA, Agrawal A. 2018. Polygenic Risk Scores in Clinical Psychology:
514 Bridging Genomic Risk to Individual Differences. *Annu Rev Clin Psychol* **14**.
515 doi:10.1146/annurev-clinpsy-050817-084847
- 516 Casey BJ, Cannonier T, Conley MI, Cohen AO, Barch DM, Heitzeg MM, Soules ME, Teslovich
517 T, Dellarco D V., Garavan H, Orr CA, Wager TD, Banich MT, Speer NK, Sutherland MT,
518 Riedel MC, Dick AS, Bjork JM, Thomas KM, Chaarani B, Mejia MH, Hagler DJ, Daniela
519 Cornejo M, Sicat CS, Harms MP, Dosenbach NUF, Rosenberg M, Earl E, Bartsch H, Watts
520 R, Polimeni JR, Kuperman JM, Fair DA, Dale AM. 2018. The Adolescent Brain Cognitive

- 521 Development (ABCD) study: Imaging acquisition across 21 sites. *Dev Cogn Neurosci*
522 **32**:43–54. doi:10.1016/J.DCN.2018.03.001
- 523 Crews FT. 2008. Alcohol-related neurodegeneration and recovery: mechanisms from animal
524 models. *Alcohol Res Health* **31**:377–88.
- 525 Fischl B, Sereno MI, Tootell RBH, Dale AM. 1999. High-resolution intersubject averaging and a
526 coordinate system for the cortical surface. *Hum Brain Mapp* **8**:272–284.
527 doi:10.1002/(SICI)1097-0193(1999)8:4<272::AID-HBM10>3.0.CO;2-4
- 528 Ge T, Chen CY, Ni Y, Feng YCA, Smoller JW. 2019. Polygenic prediction via Bayesian
529 regression and continuous shrinkage priors. *Nat Commun* **10**:1–10. doi:10.1038/s41467-
530 019-09718-5
- 531 Gershon RC, Wagster M V., Hendrie HC, Fox NA, Cook KF, Nowinski CJ. 2013. NIH toolbox
532 for assessment of neurological and behavioral function. *Neurology* **80**.
533 doi:10.1212/wnl.0b013e3182872e5f
- 534 Gröpper S, Spengler S, Stuke H, Gawron CK, Parnack J, Gutwinski S, Wiers CE, BERPohl F.
535 2016. Behavioral impulsivity mediates the relationship between decreased frontal gray
536 matter volume and harmful alcohol drinking: A voxel-based morphometry study. *J*
537 *Psychiatr Res* **83**:16–23. doi:10.1016/j.jpsychires.2016.08.006
- 538 Hagler DJ, Hatton SN, Cornejo MD, Makowski C, Fair DA, Dick AS, Sutherland MT, Casey BJ,
539 Barch DM, Harms MP, Watts R, Bjork JM, Garavan HP, Hilmer L, Pung CJ, Sicat CS,
540 Kuperman J, Bartsch H, Xue F, Heitzeg MM, Laird AR, Trinh TT, Gonzalez R, Tapert SF,
541 Riedel MC, Squeglia LM, Hyde LW, Rosenberg MD, Earl EA, Howlett KD, Baker FC,
542 Soules M, Diaz J, de Leon OR, Thompson WK, Neale MC, Herting M, Sowell ER, Alvarez

543 RP, Hawes SW, Sanchez M, Bodurka J, Breslin FJ, Morris AS, Paulus MP, Simmons WK,
544 Polimeni JR, van der Kouwe A, Nencka AS, Gray KM, Pierpaoli C, Matochik JA, Noronha
545 A, Aklin WM, Conway K, Glantz M, Hoffman E, Little R, Lopez M, Pariyadath V, Weiss
546 SR, Wolff-Hughes DL, DelCarmen-Wiggins R, Feldstein Ewing SW, Miranda-Dominguez
547 O, Nagel BJ, Perrone AJ, Sturgeon DT, Goldstone A, Pfefferbaum A, Pohl KM, Prouty D,
548 Uban K, Bookheimer SY, Dapretto M, Galvan A, Bagot K, Giedd J, Infante MA, Jacobus J,
549 Patrick K, Shilling PD, Desikan R, Li Y, Sugrue L, Banich MT, Friedman N, Hewitt JK,
550 Hopfer C, Sakai J, Tanabe J, Cottler LB, Nixon SJ, Chang L, Cloak C, Ernst T, Reeves G,
551 Kennedy DN, Heeringa S, Peltier S, Schulenberg J, Sripada C, Zucker RA, Iacono WG,
552 Luciana M, Calabro FJ, Clark DB, Lewis DA, Luna B, Schirda C, Brima T, Foxe JJ,
553 Freedman EG, Mruzek DW, Mason MJ, Huber R, McGlade E, Prescott A, Renshaw PF,
554 Yurgelun-Todd DA, Allgaier NA, Dumas JA, Ivanova M, Potter A, Florsheim P, Larson C,
555 Lisdahl K, Charness ME, Fuemmeler B, Hettema JM, Maes HH, Steinberg J, Anokhin AP,
556 Glaser P, Heath AC, Madden PA, Baskin-Sommers A, Constable RT, Grant SJ, Dowling
557 GJ, Brown SA, Jernigan TL, Dale AM. 2019. Image processing and analysis methods for
558 the Adolescent Brain Cognitive Development Study. *Neuroimage* **202**.
559 doi:10.1016/j.neuroimage.2019.116091

560 Hampton WH, Hanik IM, Olson IR. 2019. Substance abuse and white matter: Findings,
561 limitations, and future of diffusion tensor imaging research. *Drug Alcohol Depend.*
562 doi:10.1016/j.drugalcdep.2019.02.005

563 Heikkinen N, Niskanen E, Könönen M, Tolmunen T, Kekkonen V, Kivimäki P, Tanila H,
564 Laukkanen E, Vanninen R. 2017. Alcohol consumption during adolescence is associated
565 with reduced grey matter volumes. *Addiction* **112**:604–613. doi:10.1111/add.13697

- 566 Holla B, Bharath RD, Venkatasubramanian G, Benegal V. 2019. Altered brain cortical
567 maturation is found in adolescents with a family history of alcoholism. *Addict Biol* **24**:835–
568 845. doi:10.1111/adb.12662
- 569 Jacobus J, Castro N, Squeglia LM, Meloy MJ, Brumback T, Huestis MA, Tapert SF. 2016.
570 Adolescent cortical thickness pre- and post marijuana and alcohol initiation. *Neurotoxicol*
571 *Teratol.* doi:10.1016/j.ntt.2016.09.005
- 572 Lam M, Awasthi S, Watson HJ, Goldstein J, Panagiotaropoulou G, Trubetskoy V, Karlsson R,
573 Frei O, Fan C-C, Witte W De, Mota NR, Mullins N, Skarabis N, Huang H, Neale B, Daly
574 M, Mattheissen M, Walters R, Ripke S. 2019. RICOPILI: Rapid Imputation for COnsortias
575 PIpeLIne. *bioRxiv* 587196. doi:10.1101/587196
- 576 Liu M, Jiang Y, Wedow R, Li Y, Brazel DM, Chen F, Datta G, Davila-Velderrain J, McGuire D,
577 Tian C, Zhan X, Agee M, Alipanahi B, Auton A, Bell RK, Bryc K, Elson SL, Fontanillas P,
578 Furlotte NA, Hinds DA, Hromatka BS, Huber KE, Kleinman A, Litterman NK, McIntyre
579 MH, Mountain JL, Northover CAM, Sathirapongsasuti JF, Sazonova O V., Shelton JF,
580 Shringarpure S, Tung JY, Vacic V, Wilson CH, Pitts SJ, Mitchell A, Skogholt AH,
581 Winsvold BS, Sivertsen B, Stordal E, Morken G, Kallestad H, Heuch I, Zwart JA, Fjukstad
582 KK, Pedersen LM, Gabrielsen ME, Johnsen MB, Skrove M, Indredavik MS, Drange OK,
583 Bjerkeset O, Børte S, Stensland SØ, Choquet H, Docherty AR, Faul JD, Foerster JR,
584 Fritsche LG, Gordon SD, Haessler J, Hottenga JJ, Huang H, Jang SK, Jansen PR, Ling Y,
585 Mägi R, Matoba N, McMahon G, Mulas A, Orrù V, Palviainen T, Pandit A, Reginsson GW,
586 Smith JA, Taylor AE, Turman C, Willemsen G, Young H, Young KA, Zajac GJM, Zhao W,
587 Zhou W, Bjornsdottir G, Boardman JD, Boehnke M, Boomsma DI, Chen C, Cucca F,
588 Davies GE, Eaton CB, Ehringer MA, Esko T, Fiorillo E, Gillespie NA, Gudbjartsson DF,

589 Haller T, Harris KM, Heath AC, Hewitt JK, Hickie IB, Hokanson JE, Hopfer CJ, Hunter
590 DJ, Iacono WG, Johnson EO, Kamatani Y, Kardina SLR, Keller MC, Kellis M, Kooperberg
591 C, Kraft P, Krauter KS, Laakso M, Lind PA, Loukola A, Lutz SM, Madden PAF, Martin
592 NG, McGue M, McQueen MB, Medland SE, Metspalu A, Mohlke KL, Nielsen JB, Okada
593 Y, Peters U, Polderman TJC, Posthuma D, Reiner AP, Rice JP, Rimm E, Rose RJ,
594 Runarsdottir V, Stallings MC, Stančáková A, Stefansson H, Thai KK, Tindle HA,
595 Tyrfingsson T, Wall TL, Weir DR, Weisner C, Whitfield JB, Yin J, Zuccolo L, Bierut LJ,
596 Hveem K, Lee JJ, Munafò MR, Saccone NL, Willer CJ, Cornelis MC, David SP, Jorgenson
597 E, Kaprio J, Stitzel JA, Stefansson K, Thorgeirsson TE, Abecasis G, Liu DJ, Vrieze S.
598 2019. Association studies of up to 1.2 million individuals yield new insights into the genetic
599 etiology of tobacco and alcohol use. *Nat Genet.* doi:10.1038/s41588-018-0307-5

600 Mackey S, Allgaier N, Charani B, Spechler P, Orr C, Bunn J, Allen NB, Alia-Klein N, Batalla
601 A, Blaine S, Brooks S, Caparelli E, Chye YY, Cousijn J, Dagher A, Desrivieres S,
602 Feldstein-Ewing S, Foxe JJ, Goldstein RZ, Goudriaan AE, Heitzeg MM, Hester R,
603 Hutchison K, Korucuoglu O, Li C-SR, London E, Lorenzetti V, Luijten M, Martin-Santos
604 R, May A, Momenan R, Morales A, Paulus MP, Pearlson G, Rousseau M-E, Salmeron BJ,
605 Schluter R, Schmaal L, Schumann G, Sjoerds Z, Stein DJ, Stein EA, Sinha R, Solowij N,
606 Tapert S, Uhlmann A, Veltman D, van Holst R, Whittle S, Wiers R, Wright MJ, Yücel M,
607 Zhang S, Yurgelun-Todd D, Hibar DP, Jahanshad N, Evans A, Thompson PM, Glahn DC,
608 Conrod P, Garavan H. 2019. Mega-Analysis of Gray Matter Volume in Substance
609 Dependence: General and Substance-Specific Regional Effects. *Am J Psychiatry* **176**:119–
610 128. doi:10.1176/appi.ajp.2018.17040415

611

- 612 Paul CA, Au R, Fredman L, Massaro JM, Seshadri S, DeCarli C, Wolf PA. 2008. Association of
613 alcohol consumption with brain volume in the Framingham study. *Arch Neurol* **65**:1363–
614 1367. doi:10.1001/archneur.65.10.1363
- 615 Robert GH, Luo Q, Yu T, Chu C, Ing A, Jia T, Papadopoulos Orfanos D, Burke-Quinlan E,
616 Desrivières S, Ruggeri B, Spechler P, Charani B, Tay N, Banaschewski T, Bokde ALW,
617 Bromberg U, Flor H, Frouin V, Gowland P, Heinz A, Ittermann B, Martinot JL, Paillère
618 Martinot ML, Nees F, Poustka L, Smolka MN, Vetter NC, Walter H, Whelan R, Conrod P,
619 Barker T, Garavan H, Schumann G. 2019. Association of Gray Matter and Personality
620 Development with Increased Drunkenness Frequency during Adolescence. *JAMA*
621 *Psychiatry*. doi:10.1001/jamapsychiatry.2019.4063
- 622 Sanchez-Roige S, Palmer AA, Fontanillas P, Elson SL, Adams MJ, Howard DM, Edenberg HJ,
623 Davies G, Crist RC, Deary IJ, McIntosh AM, Clarke T-K, Clarke T-K. 2019. Genome-Wide
624 Association Study Meta-Analysis of the Alcohol Use Disorders Identification Test
625 (AUDIT) in Two Population-Based Cohorts. *Am J Psychiatry* **176**:107–118.
626 doi:10.1176/appi.ajp.2018.18040369
- 627 Selemon LD. 2013. A role for synaptic plasticity in the adolescent development of executive
628 function. *Transl Psychiatry*. doi:10.1038/tp.2013.7
- 629 Shnitko TA, Liu Z, Wang X, Grant KA, Kroenke CD. 2019. Chronic alcohol drinking slows
630 brain development in adolescent and young adult nonhuman primates. *eNeuro* **6**.
631 doi:10.1523/ENEURO.0044-19.2019
- 632 Stoeckel C, Gough PM, Watkins KE, Devlin JT. 2009. Supramarginal gyrus involvement in
633 visual word recognition. *Cortex* **45**:1091–1096. doi:10.1016/j.cortex.2008.12.004

- 634 Verhulst B, Neale MC, Kendler KS. 2015. The heritability of alcohol use disorders: A meta-
635 analysis of twin and adoption studies. *Psychol Med* **45**:1061–1072.
636 doi:10.1017/S0033291714002165
- 637 Walters GD. 2002. THE HERITABILITY OF ALCOHOL ABUSE AND DEPENDENCE: A
638 META-ANALYSIS OF BEHAVIOR GENETIC RESEARCH. *Am J Drug Alcohol Abuse*
639 **28**:557–584. doi:10.1081/ADA-120006742
- 640 Walters RK, Polimanti R, Johnson EC, McClintick JN, Adams MJ, Adkins AE, Aliev F, Bacanu
641 SA, Batzler A, Bertelsen S, Biernacka JM, Bigdeli TB, Chen LS, Clarke TK, Chou YL,
642 Degenhardt F, Docherty AR, Edwards AC, Fontanillas P, Foo JC, Fox L, Frank J, Giegling
643 I, Gordon S, Hack LM, Hartmann AM, Hartz SM, Heilmann-Heimbach S, Herms S,
644 Hodgkinson C, Hoffmann P, Jan Hottenga J, Kennedy MA, Alanne-Kinnunen M, Konte B,
645 Lahti J, Lahti-Pulkkinen M, Lai D, Ligthart L, Loukola A, Maher BS, Mbarek H, McIntosh
646 AM, McQueen MB, Meyers JL, Milaneschi Y, Palviainen T, Pearson JF, Peterson RE,
647 Ripatti S, Ryu E, Saccone NL, Salvatore JE, Sanchez-Roige S, Schwandt M, Sherva R,
648 Streit F, Strohmaier J, Thomas N, Wang JC, Webb BT, Wedow R, Wetherill L, Wills AG,
649 Agee M, Alipanahi B, Auton A, Bell RK, Bryc K, Elson SL, Fontanillas P, Furlotte NA,
650 Hinds DA, Huber KE, Kleinman A, Litterman NK, McCreight JC, McIntyre MH, Mountain
651 JL, Noblin ES, Northover CAM, Pitts SJ, Sathirapongsasuti JF, Sazonova O V., Shelton JF,
652 Shringarpure S, Tian C, Tung JY, Vacic V, Wilson CH, Boardman JD, Chen D, Choi DS,
653 Copeland WE, Culverhouse RC, Dahmen N, Degenhardt L, Domingue BW, Elson SL, Frye
654 MA, Gäbel W, Hayward C, Ising M, Keyes M, Kiefer F, Kramer J, Kuperman S, Lucae S,
655 Lynskey MT, Maier W, Mann K, Männistö S, Müller-Myhsok B, Murray AD, Nurnberger
656 JI, Palotie A, Preuss U, Rääkkönen K, Reynolds MD, Ridinger M, Scherbaum N, Schuckit

657 MA, Soyka M, Treutlein J, Witt S, Wodarz N, Zill P, Adkins DE, Boden JM, Boomsma DI,
658 Bierut LJ, Brown SA, Bucholz KK, Cichon S, Costello EJ, de Wit H, Diazgranados N, Dick
659 DM, Eriksson JG, Farrer LA, Foroud TM, Gillespie NA, Goate AM, Goldman D, Gruzca
660 RA, Hancock DB, Harris KM, Heath AC, Hesselbrock V, Hewitt JK, Hopfer CJ, Horwood
661 J, Iacono W, Johnson EO, Kaprio JA, Karpyak VM, Kendler KS, Kranzler HR, Krauter K,
662 Lichtenstein P, Lind PA, McGue M, MacKillop J, Madden PAF, Maes HH, Magnusson P,
663 Martin NG, Medland SE, Montgomery GW, Nelson EC, Nöthen MM, Palmer AA, Pedersen
664 NL, Penninx BWJH, Porjesz B, Rice JP, Rietschel M, Riley BP, Rose R, Rujescu D, Shen
665 PH, Silberg J, Stallings MC, Tarter RE, Vanyukov MM, Vrieze S, Wall TL, Whitfield JB,
666 Zhao H, Neale BM, Gelernter J, Edenberg HJ, Agrawal A. 2018. Transancestral GWAS of
667 alcohol dependence reveals common genetic underpinnings with psychiatric disorders. *Nat*
668 *Neurosci* **21**:1656–1669. doi:10.1038/s41593-018-0275-1

669 Winters KC, Arria A. 2011. Adolescent Brain Development and Drugs. *Prev Res* **18**:21–24.

670 World Health Organization. 2018. Global status report on alcohol and health 2018. Geneva:
671 World Health Organization; 2018. Licence: CC BY-NC-SA 3.0 IGO.

672 Yu R, Deochand C, Krotow A, Le'ao R, Tong M, Agarwal AR, Cadenas E, De La Monte SM.
673 2016. Tobacco Smoke-Induced Brain White Matter Myelin Dysfunction: Potential Co-
674 Factor Role of Smoking in Neurodegeneration. *J Alzheimer's Dis* **50**:133–148.
675 doi:10.3233/JAD-150751

676 Zhou H, Sealock JM, Sanchez-Roige S, Clarke T-K, Levey DF, Cheng Z, Li B, Polimanti R,
677 Kember RL, Smith RV, Thygesen JH, Morgan MY, Atkinson SR, Thursz MR, Nyegaard
678 M, Mattheisen M, Børghlum AD, Johnson EC, Justice AC, Palmer AA, McQuillin A, Davis

679 LK, Edenberg HJ, Agrawal A, Kranzler HR, Gelernter J. 2020. Genome-wide meta-analysis
680 of problematic alcohol use in 435,563 individuals yields insights into biology and
681 relationships with other traits. *Nat Neurosci* 1–10. doi:10.1038/s41593-020-0643-5

682

683

684