

1 **Functional mapping of B-cell linear epitopes of SARS-CoV-2 in**
2 **COVID-19 convalescent population**

3
4 Zhigang Yi ^{1,2*#}, Yun Ling ^{1#}, Xiaonan Zhang ^{1#}, Jieliang Chen ^{2#}, Kongying Hu ², Yuyan Wang ²,
5 Wuhui song ², Tianlei Ying ², Rong Zhang ², Hongzou Lu ^{1*}, Zhenghong Yuan ^{2*}

6
7 1. Shanghai public health clinical center, Fudan University, Shanghai, 201508, PR China

8 2. Key Laboratory of Medical Molecular Virology (MOE/NHC/CAMS), School of Basic Medical
9 Sciences, Shanghai Medical College, Fudan University, Shanghai, 200032, PR China

10

11 # Co-first authors

12 * Contact authors

13

14 Email: zgyi@fudan.edu.cn (Z. Yi); luhongzhou@shphc.org.cn (H, Lu); zhyuan@shmu.edu.cn (Z.
15 Yuan)

16

17

18

19 **Abstract**

20 Pandemic SARS-CoV-2 has infected over 10 million people and caused over 500,000
21 mortalities. Vaccine development is in urgent need to stop the pandemic. Despite great progresses
22 on SARS-CoV-2 vaccine development, the efficacy of the vaccines remains to be determined.
23 Deciphering the interactions of the viral epitopes with their elicited neutralizing antibodies in the
24 convalescent COVID-19 population inspires the vaccine development. In this study, we devised a
25 peptide array composed of 20-mer overlapped peptides of spike (S), membrane (M) and envelope
26 (E) proteins, and performed a screening with 120 COVID-19 convalescent serums and 24
27 non-COVID-19 serums. We identified five SARS-CoV-2-specific dominant epitopes that reacted
28 with above 40% COVID-19 convalescent serums. Epitopes in the receptor-binding domain (RBD)
29 of S ill reacted with the convalescent serums. Of note, two peptides non-specifically interacted with
30 most of the non-COVID-19 serums. Neutralization assay indicated that only five serums completely
31 blocked viral infection at the dilution of 1:200. By using a peptide-compete neutralizing assay, we
32 found that three dominant epitopes partially competed the neutralization activity of several
33 convalescent serums, suggesting antibodies elicited by these epitopes played an important role in
34 neutralizing viral infection. The epitopes we identified in this study may serve as vaccine candidates
35 to elicit neutralizing antibodies in most vaccinated people or specific antigens for SARS-CoV-2
36 diagnosis.

37

38 **Key words:** SARS-CoV-2; COVID-19; epitope; neutralizing antibody; vaccine; diagnosis

39

40

41

42

43

44

45

46

47 **Introduction**

48 Since the outbreak of COVID-19 in Wuhan China in December 2019, it was endemic to all
49 over the China within less than one month and now become pandemic in over 200 countries. The
50 infected cases surged to over 10 million by the end of June 2020, with over 500,000 mortalities
51 (<https://www.who.int/emergencies/diseases/novel-coronavirus-2019>). COVID-19 is caused by
52 infection with a novel coronavirus SARS-CoV-2 (1-3). Efficacy of several antiviral agents such as
53 remdesivir and chloroquine remains uncertainty (4-6). Vaccine development is in urgent need to
54 stop the pandemic. Coronaviruses contains three structural proteins on the surface of virus
55 membrane envelope: the spike (S), membrane (M) and envelop (E) proteins. S protrudes from the
56 virion surface to form a spike and interacts with host receptor to mediate virus entry (7). The spike
57 protein (S) of SARS-CoV-2 interacts with host receptor ACE2 (2). SARS-CoV-2 vaccine
58 candidates include viral vector expressing SARS-CoV-2 spike protein (S) (8), the receptor binding
59 domain (RBD) (9) and inactivated virion (10). With the start of the first clinical trial of a
60 recombinant adenovirus type-5 (Ad5) vectored COVID-19 vaccine (8), there would be many other
61 vaccine trials. Despite great progresses on SARS-CoV-2 vaccine development, there are still critical
62 questions remains to be answered, such as which kind of antigens (epitopes) elicit robust
63 neutralizing antibodies in most people; if the convalescent serum of COVID-19 patients contains
64 neutralizing antibodies and which viral epitopes are recognized by the neutralizing antibodies.
65 Answers to these questions may guide development of effective vaccines. In this study, we
66 collected the serums of a convalescent COVID-19 cohort. By using a peptide array composed of
67 20-mer overlapped peptides of S, M and E, we identified several dominant SARS-CoV-2 specific
68 linear epitopes that reacted with the convalescent serums. By using peptide-compete neutralizing
69 assay, we found that some of these dominant epitopes partially competed the neutralization activity
70 of several convalescent serums. These data provide information for developing novel vaccine
71 candidates and antigens for specific antibody diagnosis.

72

73 **Results**

74 **Identification of dominant linear B-cell epitopes of COVID-19 by a peptide array.**

75 To map the dominant linear B-cell epitopes recognized by most COVID-19 patients, we
76 designed a 20-mer overlapped peptide array encompassing the entire spike (S), the ectodomain of
77 membrane (M), the loops between the transmembrane helices (TMs) and representative regions of
78 endodomains of M and envelope (E) proteins (Fig.1a and b)(Supplementary table 1). We used the
79 peptide array to perform a screening with convalescent serums from 120 COVID-19 patients and 24

80 serums collected from patients with symptoms of acute respiratory infections but with negative
81 diagnosis of COVID-19. The serums were diluted 1:200 and incubated with the peptide array,
82 followed by incubated with HRP-conjugated anti-human IgG. Peptides reacting with the serums
83 were visualized by chemiluminescent reagents. Of the 120 COVID-19 convalescent serums, 2
84 serums didn't react with any peptide; 4 serums only reacted with one peptide in the peptide array.
85 Peptides S1-52, S1-55, S1-57, S2-13, S2-47, M1 reacted with more than 40% COVID-19 serums
86 (Fig. 1c and 1d). Of note, S1-52 and S2-56 reacted with more than 40% COVID-19-negative
87 control serums, indicating non-specific reaction (Fig. 1c and 1d). We also detected about 17%
88 serum reacted with a peptide (E2) in the endodomain of E whereas no reaction with the peptide in
89 the ectodomain (E1) (Fig. 1c and 1d). The topology of E protein remains controversial. Evidences
90 indicate the N-terminal part is the ectodomain (Fig. 1a)(11, 12). If the interaction of E endodomain
91 with antibodies is due to the real topologically exposure remains to be clarified.

92 The peptides S1-52, S1-55, S1-57, S2-13, S2-47, M1 that reacted with more than 40%
93 COVID-19 serums represented as dominant linear B-cell epitopes. We located these epitopes in a
94 crystal structure of S in open state (PBD, 6vyb) (Fig. 2a and 2b). The peptides S1-52 and S1-55 were
95 near the receptor-binding domain (RBD) (Fig. 2a and 2b). The peptide S2-13 contained the
96 alternative S2' cleavages sites and fusion peptide (FP) (Fig. 2a and 2b). Most of the peptide S2-47 is
97 not available in the crystal structure (Fig. 2a and 2b). Peptide S2-47 is conserved in SARS-CoV-2
98 and SARS-CoV whereas other peptide varied in SARS-CoV-2 and SARS-CoV (Fig. 2c).

99 **Less B-cell linear epitopes on Receptor binding domain (RBD) of Spike protein (S).**

100 Receptor binding domain (RBD) of coronaviruses spike proteins interacts with host receptor to
101 mediate virus entry and some antibodies against RBD potentially neutralize viral infection (7). We
102 examined the reactions of the RBD peptides with the serums (Fig. 3a). Except for S1-52, almost all
103 the RBD peptides reacted with less than 10% serums, with peptides such as S1-31, S1-32, S1-34
104 and S1-35 that didn't react with any serum (Fig. 3b). Although the peptide S1-52 interacted with
105 most serums, it also non-specifically interacted with control serums (Fig. 3c). A poor-interaction
106 peptide S1-31 was partially masked by the high-reaction peptide S1-52 in the crystal structures (Fig.
107 3c), suggesting the poor reaction of this peptide was probably due to its poor accessibility. In
108 contrast, the peptide S1-32 and the ACE-2 interacting-interface (Fig. 3a, in red) have good
109 accessibility (Fig. 3c) but still exhibited poor reactions (Fig. 3b), suggesting poor reactions of
110 peptides in RBD in general.

111 **Neutralizing SARS-CoV-2 infection by COVID-19 convalescent serum.**

112 To explore the functional relevance of the identified B-cell linear epitopes and their elicited

113 antibodies with the neutralizing activity, we first assessed the activities of the serums for the
114 neutralization of SARS-CoV-2 virus infection. COVID-19 convalescent serums were diluted at
115 1:200 and incubated with 100 PFU (plaque-forming unit) of virus. The neutralizing activity was
116 assessed by reduction of viral infection-induced cytopathic effect (CPE) and quantification of viral
117 RNA levels in the supernatants of the infected cells (Fig. 4a). We used a SARS-CoV-2 strain
118 nCoV-SH01 that we isolated from the throat swab sample of a COVID-19 patient (13). Virus
119 infection induces typical syncytial cytopathic effects on Vero E6 cells (supplementary Fig. 1). Some
120 COVID-19 convalescent serums could partially reduce (CPE+, CPE++) the CPE or completely
121 blocked the appearance of CPE (CPE-) (supplementary Fig. 1; Supplementary table 2). Of the 120
122 COVID-19 convalescent serums tested, at the dilution of 1:200, five serums completely blocked the
123 appearance of CPE at 3 days post infection. And seven serums partially reduced the CPE or
124 completely blocked the appearance of CPE in one of the duplicated wells (Supplementary table 2).
125 We also quantified the viral RNA levels in the supernatants of the infected cells at 3 days post
126 infection with some representative samples. Serums P13, P18, P68, P98 and P107 that completely
127 blocked the appearance of CPE also dramatically reduced the viral RNA levels (Fig. 4b).

128 **Competing the neutralizing activity of convalescent serum with dominant B-cell linear** 129 **epitopes.**

130 Then we compared the peptide array reaction patterns of the neutralizing serums (Nab) with
131 the patterns of several non-neutralizing serums (Non-Nab). All the Nabs reacted with the dominant
132 epitopes S1-55, S1-57 and S2-13. In contrast, only part of the Non-nabs reacted with these epitopes
133 (Fig. 5a). Next, we evaluated if the antibodies against these epitopes play a role in activity of
134 neutralizing viral infection. We performed a neutralizing experiment by using the peptide S1-55,
135 S1-57, S2-13 and S2-47 compete the neutralizing activity of four neutralizing serums (Fig. 5b). The
136 peptides were added at a final concentration of to 0.25mg/ml, at which, typically the peptide could
137 completely block the corresponding antibodies (14). Adding of the peptides alone didn't affect viral
138 infection. Out of the four serums tested, peptides S1-55, S1-57 and S2-47 partially competed the
139 neutralizing activity of one or two of the serums (Fig. 5c), suggesting that antibodies against these
140 peptides partially contribute to the neutralizing activity of the serums.

141 **Relationship of the neutralizing activity of the serums with the progress of the COVID-19** 142 **disease**

143 To explore if the relationship of the neutralizing activity of the serums with the progress of the
144 COVID-19 disease, we retrospectively analyzed the disease severity of the 120 COVID-19 patients.
145 Eight patients experienced severe symptoms and patients who have serums with complete or partial

146 neutralizing activity experienced asymptomatic or mild diseases (data not shown). We then
147 examined the time intervals from the symptom onset to convalescence with SARS-CoV-2 triple
148 negative diagnosis for throat swab, urine and feces. The average time interval for convalescence is
149 16.3 days. Patients with complete or neutralizing-antibodies (Fig. 6, in red and arrows) had variable
150 time interval for convalescence, ranging from 8 days to 35 days, which was similar with the patients
151 without neutralizing-antibodies (Fig. 6).

152 **Discussion**

153 To learn the profile of the B-cell linear epitopes recognized by COVID-19 cohort for guiding
154 vaccine design and devising diagnosis reagents, we performed functional B-cell linear epitope
155 mapping with the convalescent serums of a COVID-19 cohort. By using a 20-mer-peptide array
156 covering the S, M and E, we identified SARS-CoV-2 dominant epitopes recognized by most
157 COVID-19 convalescent serums (Fig. 1 and 2). By using peptide-compete neutralizing assay, we
158 found that epitopes in the peptides S1-55, S1-57 and S2-47 partially competed the neutralization
159 activity of several convalescent serums (Fig. 5), suggesting antibodies against these epitopes play
160 an important role in neutralizing viral infection. As the convalescent serum is composed of different
161 antibodies, it is expected that fully neutralization should be accomplished by the action of
162 antibodies against these identified epitopes and probably other spatial epitopes. When we were
163 preparing this manuscript, a similar study that used an 18-mer-peptide pool of spike proteins to
164 screen 25 COVID-19 convalescent serums by ELISA. They identified two dominant epitopes that
165 partially overlapped with the peptide S1-55 and S2-13 identified in this study (15). And depletion of
166 the COVID-19 convalescent serums by these two epitopes partially impaired the neutralizing
167 activity of the convalescent serums (15). In these study, in addition to these two peptides, we
168 identified three other dominant epitopes: the epitopes in peptide S1-57 that is close to the peptide
169 S1-55, the peptide S2-47 that is near the membrane proximal region of S and the ectodomain of M
170 (Fig. 1 and 2). Notably, peptide S1-57 competed the neutralizing activity of two serums out of four
171 serums tested (Fig. 5), suggesting the antibodies against this peptide play an import role in
172 neutralizing activity. In contrast, peptide S2-13 didn't compete the neutralizing activity of the
173 serums tested, which is inconsistent to the previous study (15). The discrepancy might be due to the
174 variation of the serums used.

175 We noticed two peptides S1-52 that is in the receptor-binding domain and S2-56 that is in the
176 endomain of S highly reacted with SARS-CoV-2 negative serums (Fig. 1), pointing to a risk for
177 using the whole S or RBD as a reagent for diagnosis of SARS-CoV-2 antibodies. The dominant

178 peptides S1-57 and M1 specifically reacted with COVID-19 serums and may provide good
179 candidates for diagnosis reagents.

180 RBD of coronaviruses spike proteins mediate virus entry and antibodies against RBD potentially
181 neutralize viral infection. To our surprise, we detected much less interactions of the peptides in
182 RBD with the serums, except for the peptide S1-52 (Fig. 3). Of the 120 serums, only 5 serums
183 completely neutralized and 7 serums partially neutralized viral infection at the dilution of 1:200.
184 The relative low percentage of neutralizing antibody might be due to the poor recognition of RBD
185 linear epitopes. Alternatively the most of the RBD epitopes are conformational epitopes. We can
186 not rule out the possibility that the non-neutralizing antibodies could sterilize viral infection by
187 other mechanisms such as antibody-dependent cellular cytotoxicity (ADCC) (16).

188 In summary, we identified the dominant B-cell linear epitopes of SARS-CoV-2 in a
189 COVID-19 cohort. Antibodies elicited by some of these antibodies played an important role in
190 neutralizing viral infection. These epitopes may serve as a vaccine candidate to elicit neutralizing
191 antibodies in most vaccinated people or a specific antigen for SARS-CoV-2 diagnosis.

192 **Methods**

193 **Ethics statements**

194 This study was approved by the ethics committee of Shanghai public health clinical center, and the
195 procedures were carried out in accordance with approved guidelines. Informed consent was
196 obtained from the subjects. Collection of the COVID-19 convalescent serum samples was approved
197 under the study number YJ-2020-S077-02. The serum samples of patients with symptoms of acute
198 respiratory infections were collected under the study number YJ-2018-S045-02.

199 **Peptide array**

200 According to a sequence of SARS-CoV-2 (Accession number, MT121215), 20-mer overlapped
201 peptides covering the entire spike (S) region, the ectodomain of membrane (M), the loops between
202 the TMs and representative regions of endodomains of M and envelope (E) were synthesized by GL
203 Biochem (Shanghai, China) and purified by HPLC. Peptides were printed onto activated integrated
204 poly (dimethylsiloxane) membrane (iPDMS) as described (14).

205 **Serum screening**

206 Serums were diluted (1:200) and incubated with peptide array. After wash, the peptide arrays were
207 incubated with Horseradish peroxidase (HRP)-conjugated goat anti-human IgG. Dots were
208 visualized by Super Signal Femto Maximum Sensitivity Substrate for Chemiluminescence (Thermo
209 Fischer) and pictures were captured by a cool CCD. The chemiluminescence intensity of each dot

210 was converted to signal-to-noise ratio (SNR) by subtracting the background intensity averaged from
211 the intensity from blank dots. SNR equal or above 2 is considered as positive.

212 **Cells**

213 Vero E6 cells were maintained in Dulbecco's modified eagle medium (DMEM)(Hyclone)
214 containing 10% FBS (BI) supplemented with 1% penicillin, and streptomycin (Hyclone).

215 **Virus and neutralization assay**

216 SARV-CoV-2 virus experiment was carried out in the biosafety level 3 (BSL-3) laboratory in the
217 Shanghai medical college, Fudan University. SARV-CoV-2 virus strain nCoV-SH01 was isolated
218 from a throat swab sample on Vero E6 cells (13), propagated and titrated on Vero E6 cells by a
219 plaque assay. For neutralization assay, 5×10^4 Vero E6 cells were seeded onto 96 well plates.
220 Serums were diluted 1:100 in DMEM supplemented with 2% FBS, incubated with 100 PFU of
221 SARV-CoV-2 virus at 37°C for 1 hours, and then the mixture was added to equal volume of cell
222 medium (the final dilution of serum is 1:200). After infection for 2 hours, cells were washed once
223 with DPBS and added with fresh media. For peptide competing experiment, serums were diluted
224 1:100 in DMEM supplemented with 2% FBS, incubated with 100 PFU of SARV-CoV-2 virus and
225 indicated peptides at a concentration of 0.5mg/ml at 37°C for 1 hours, and then the mixture was
226 added to equal volume of cell medium (the final dilution of serum is 1:200 and the final
227 concentration of peptide is 0.25mg/ml).

228 **Quantitative real-time PCR**

229 Supernatants from infected cells were mixed with Trizol LS (Invitrogen). RNAs were extracted by
230 phenol/chloroform and precipitated by isopropanol. After wash with 70% ethanol, RNAs were
231 dissolved in nuclease-free water and quantified by a Taqman-based real time PCR with One Step
232 PrimeScript RT-PCR kit (Takara) according to the manufacturers' protocol with 400nM of each
233 primer (sense primer: GAA AAT AGG ACC TGA GCG CAC C, anti-sense primer: TGA CAA
234 TAC AGA TCA TGG TTG CTT TGT) and 200nM of probe (FAM- TAG ACG TGC CAC ATG
235 CTT TTC CAC TGC TTC AGA C -BHQ1). The relative RNA levels were calculated by $2^{-\Delta CT}$
236 method (17).

237 **COVID-19 screening**

238 We selected throat swab samples of patients with symptoms of acute respiratory infections that
239 were collected before the COVID-19 outbreak and extracted the nucleic acid. COVID-19 diagnosis
240 was performed by Quantitative real-time PCR as described above.

241 **Data processing**

242 MegAlign (DNASTar) was used for protein sequence alignment analysis. Transmembrane helices

243 prediction was done by TMHMM program (<http://www.cbs.dtu.dk/services/TMHMM-2.0/>).
244 Structure data of open state of S was retrieved (PDB, 6vyb) and visualized by UCSF Chimera.

245 **Funding**

246 This work was supported in part by the National Science and Technology Major Project of
247 China (2017ZX10103009). Key Emergency Project of Shanghai Science and Technology
248 Committee (20411950103). The funders had no role in study design, data collection and analysis,
249 decision to publish, or preparation of the manuscript.

250 **Disclosure statement**

251 The authors declare no conflict of interest.

252 **Author Contributions**

253 Conceived the study: J Chen, T Ying, Z Yi; conducted the study: K Hu, Y Wang, W Song, R Zhang,
254 Z Yi; clinical sample: Y Ling, X Zhang, H Lu; Data analysis: Z Yi, X Zhang, K Hu, Y Wang;
255 Manuscript draft: Z Yi; Resources: Z Yuan, H LU, Z Yi.

256

257

258 **References:**

- 259 1. **Zhu N, Zhang D, Wang W, Li X, Yang B, Song J, Zhao X, Huang B, Shi W, Lu R, Niu P,**
260 **Zhan F, Ma X, Wang D, Xu W, Wu G, Gao GF, Tan W, China Novel Coronavirus I,**
261 **Research T.** 2020. A Novel Coronavirus from Patients with Pneumonia in China, 2019.
262 *The New England journal of medicine* **382**:727-733.
- 263 2. **Zhou P, Yang XL, Wang XG, Hu B, Zhang L, Zhang W, Si HR, Zhu Y, Li B, Huang CL,**
264 **Chen HD, Chen J, Luo Y, Guo H, Jiang RD, Liu MQ, Chen Y, Shen XR, Wang X, Zheng**
265 **XS, Zhao K, Chen QJ, Deng F, Liu LL, Yan B, Zhan FX, Wang YY, Xiao GF, Shi ZL.** 2020.
266 A pneumonia outbreak associated with a new coronavirus of probable bat origin.
267 *Nature*.
- 268 3. **Chen L, Liu W, Zhang Q, Xu K, Ye G, Wu W, Sun Z, Liu F, Wu K, Zhong B, Mei Y,**
269 **Zhang W, Chen Y, Li Y, Shi M, Lan K, Liu Y.** 2020. RNA based mNGS approach
270 identifies a novel human coronavirus from two individual pneumonia cases in 2019
271 Wuhan outbreak. *Emerging microbes & infections* **9**:313-319.
- 272 4. **Wang Y, Zhang D, Du G, Du R, Zhao J, Jin Y, Fu S, Gao L, Cheng Z, Lu Q, Hu Y, Luo G,**
273 **Wang K, Lu Y, Li H, Wang S, Ruan S, Yang C, Mei C, Wang Y, Ding D, Wu F, Tang X,**
274 **Ye X, Ye Y, Liu B, Yang J, Yin W, Wang A, Fan G, Zhou F, Liu Z, Gu X, Xu J, Shang L,**
275 **Zhang Y, Cao L, Guo T, Wan Y, Qin H, Jiang Y, Jaki T, Hayden FG, Horby PW, Cao B,**
276 **Wang C.** 2020. Remdesivir in adults with severe COVID-19: a randomised,
277 double-blind, placebo-controlled, multicentre trial. *Lancet* **395**:1569-1578.
- 278 5. **Bonovas S, Piovani D.** 2020. Compassionate Use of Remdesivir in Covid-19. *The New*
279 *England journal of medicine* **382**:e101.
- 280 6. **Wong YK, Yang J, He Y.** 2020. Caution and clarity required in the use of chloroquine
281 for COVID-19. *The Lancet Rheumatology* **2**:e255.
- 282 7. **Masters PS, Perlman S.** sixth edition. *Coronaviridae. Fields Virology*:825-858.
- 283 8. **Zhu FC, Li YH, Guan XH, Hou LH, Wang WJ, Li JX, Wu SP, Wang BS, Wang Z, Wang L,**
284 **Jia SY, Jiang HD, Wang L, Jiang T, Hu Y, Gou JB, Xu SB, Xu JJ, Wang XW, Wang W,**
285 **Chen W.** 2020. Safety, tolerability, and immunogenicity of a recombinant adenovirus
286 type-5 vectored COVID-19 vaccine: a dose-escalation, open-label, non-randomised,
287 first-in-human trial. *Lancet* **395**:1845-1854.
- 288 9. **Brain D, Mou H, Zhang L, Guo Y, He W, Oihara A, Mark S, Luo G, Li W, Zhong G, Choe**
289 **H, Farzan M.** 2020. The SARS-CoV-2 receptor-binding domain elicits a potent
290 neutralizing response without antibody-dependent enhancement. *bioRxiv*

- 291 **2020.04.10.036418.**
- 292 10. **Gao Q, Bao L, Mao H, Wang L, Xu K, Yang M, Li Y, Zhu L, Wang N, Lv Z, Gao H, Ge X,**
293 **Kan B, Hu Y, Liu J, Cai F, Jiang D, Yin Y, Qin C, Li J, Gong X, Lou X, Shi W, Wu D,**
294 **Zhang H, Zhu L, Deng W, Li Y, Lu J, Li C, Wang X, Yin W, Zhang Y, Qin C.** 2020. Rapid
295 development of an inactivated vaccine candidate for SARS-CoV-2. *Science*.
- 296 11. **Corse E, Machamer CE.** 2002. The cytoplasmic tail of infectious bronchitis virus E
297 protein directs Golgi targeting. *Journal of virology* **76**:1273-1284.
- 298 12. **Vennema H, Godeke GJ, Rossen JW, Voorhout WF, Horzinek MC, Opstelten DJ,**
299 **Rottier PJ.** 1996. Nucleocapsid-independent assembly of coronavirus-like particles by
300 co-expression of viral envelope protein genes. *The EMBO journal* **15**:2020-2028.
- 301 13. **Zhang R, Yi Z, Wang Y, Teng Z, Xu W, Song W, Cai X, Sun Z, Gu C, Zhou Y, Chen H, Ye**
302 **Y, Han W, Zhu Y, Feng X, Fang F, Li C, Zhang X, Qu D, Fu C, Xie H, Yuan Z.** 2020.
303 Isolation of a 2019 novel coronavirus strain from a coronavirus disease 19 patient in
304 Shanghai. *Journal of Microbes and Infection* **15**:15-20.
- 305 14. **Zhang H, Song Z, Yu H, Zhang X, Xu S, Li Z, Li J, Xu H, Yuan Z, Ma H, Yi Z, Hu Y.** 2018.
306 Genome-wide linear B-cell epitopes of enterovirus 71 in a hand, foot and mouth
307 disease (HFMD) population. *Journal of clinical virology : the official publication of the*
308 *Pan American Society for Clinical Virology* **105**:41-48.
- 309 15. **Poh CM, Carissimo G, Wang B, Amrun SN, Lee CY, Chee RS, Fong SW, Yeo NK, Lee**
310 **WH, Torres-Ruesta A, Leo YS, Chen MI, Tan SY, Chai LYA, Kalimuddin S, Kheng**
311 **SSG, Thien SY, Young BE, Lye DC, Hanson BJ, Wang CI, Renia L, Ng LFP.** 2020. Two
312 linear epitopes on the SARS-CoV-2 spike protein that elicit neutralising antibodies in
313 COVID-19 patients. *Nature communications* **11**:2806.
- 314 16. **Forthal DN, Finzi A.** 2018. Antibody-dependent cellular cytotoxicity in HIV infection.
315 *Aids* **32**:2439-2451.
- 316 17. **Livak KJ, Schmittgen TD.** 2001. Analysis of relative gene expression data using
317 real-time quantitative PCR and the 2(-Delta Delta C(T)) Method. *Methods* **25**:402-408.
- 318
- 319

320 **Figure Legends**

321 **Figure 1. Screening convalescent serum of COVID-19 by peptide array.** (a) Schematic
322 of SARS-CoV-2 virion structural proteins: spike (S), membrane (M) and envelope (E) proteins. In
323 the diagram of S, the receptor-binding domain (RBD) is in *red*. Fusion peptide (FP) is in *green*.
324 Black boxes indicate transmembrane helices (TM). Arrows indicate S1/S2 cleavage site and
325 alternative S2' cleavages sites, respectively. In the diagrams of M and E, the endodomains and
326 ectodomains are indicated. The numbers above the diagrams indicate the positions (aa) of each
327 domain. (b) Design of peptide array. 20-mer overlapped peptides covering the entire S, the
328 ectodomain of M, the loops between the TMs and representative regions of endodomains of M and E
329 were synthesized and dotted. (c-d) Convalescent serums from COVID-19 patients and control
330 serums from non-COVID-19 patients (control serum) were diluted (1:200) and incubated with
331 peptide array, followed by incubated with HRP-conjugated anti-human IgG. Peptide array were
332 visualized by chemiluminescent reagents, scanned and quantified. The peptides with signal to noise
333 above 2 were counted as positive (black bar). The positive peptides for each patient were plotted.
334 Arrows indicate representative peptides. (d) The positive percentage of the indicated peptides.

335 **Figure 2. Identification of dominant B-cell linear epitopes of SARS-CoV-2 virus particle.**
336 (a) Schematic of spike (S), membrane (M) and the dominant B-cell linear epitopes (red lines). (b)
337 Locations of the dominant B-cell linear epitopes in the S structure. The S structure (open sate; PBD,
338 6vyb), N-terminal domain (cyan), RBD (red), fusion peptide (green). The B-cell linear epitopes are
339 in black. Only part of the S2-47 is visible in the structure. (c) Alignment of the dominant B-cell
340 linear epitopes. Different amino acids are in red. Fusion peptide in S2-13 is in green.

341 **Figure 3. Less B-cell linear epitopes on Receptor binding domain (RBD) of Spike protein**
342 **(S).** (a) Amino acid sequence of RBD. Black bars indicate the corresponding peptides. The ACE-2
343 interacting interface was in red. (b) Reaction of COVID-19 convalescent serums with the peptides
344 in RBD. The peptides with signal to noise above 2 were counted as positive (black bar). (c)
345 Representative peptide (in black) in the structure of RBD (PBD, 6vyb).

346 **Figure 4. Neutralizing SARS-CoV-2 infection by COVID-19 convalescent serum.** (a)
347 Schematic of experiment design. COVID-19 convalescent serums were diluted and incubated with
348 SARS-CoV-2 before added to the media. At 48 hours or 72 hours post infection (p.i), the cytopathic
349 effect (CPE) of the infected cells was examined. The viral RNAs in the supernatants were
350 quantified by real-time PCR (q-PCR). (b) Quantification of the viral RNA levels in the supernatants
351 from representative wells. Relative RNA levels to the mock-treated wells were plotted (n=2).

352 **Figure 5. Competing the neutralizing activity of convalescent serum with dominant**

353 **B-cell linear epitopes.** (a) Reaction of the neutralizing antibodies (Nab) and non-neutralizing
354 antibodies (Non-Nab) with the peptide array. The peptides with signal to noise above 2.1 were
355 counted as positive (black bar). (b) Schematic of experiment design. Four neutralizing serums (P13,
356 P18, P68 and P98) were diluted and incubated with SARS-CoV-2 and the peptides (S1-55, S1-57,
357 S2-13 and S2-47), respectively before added to the media. At 24 p.i, the viral RNAs in the
358 supernatants were quantified by q-PCR. Experiment was done in duplicated well for each serum (b)
359 Quantification of the viral RNA levels in the supernatants from representative wells. Relative RNA
360 levels to the mock-treated wells were plotted (n=2).

361 **Figure 6. Time intervals from symptom onset to SARS-CoV-2 triple negative diagnosis.**
362 Time intervals from symptom onset to SARS-CoV-2 triple negative diagnosis for throat swab, urine
363 and feces. Serums with neutralizing activity are in red. Arrows indicate fully neutralizing
364 antibodies.

365

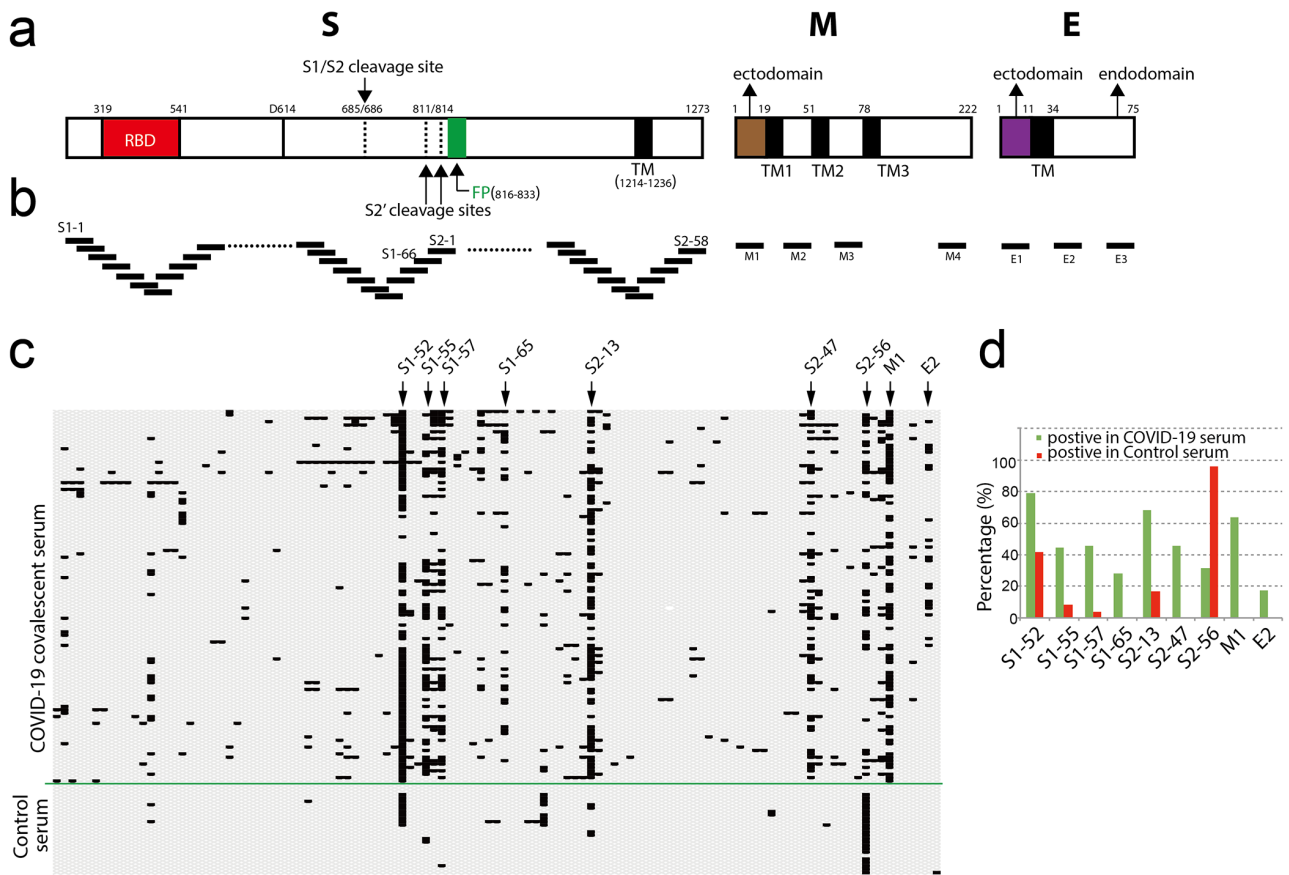
366

367

368

369

370 **Figure 1**



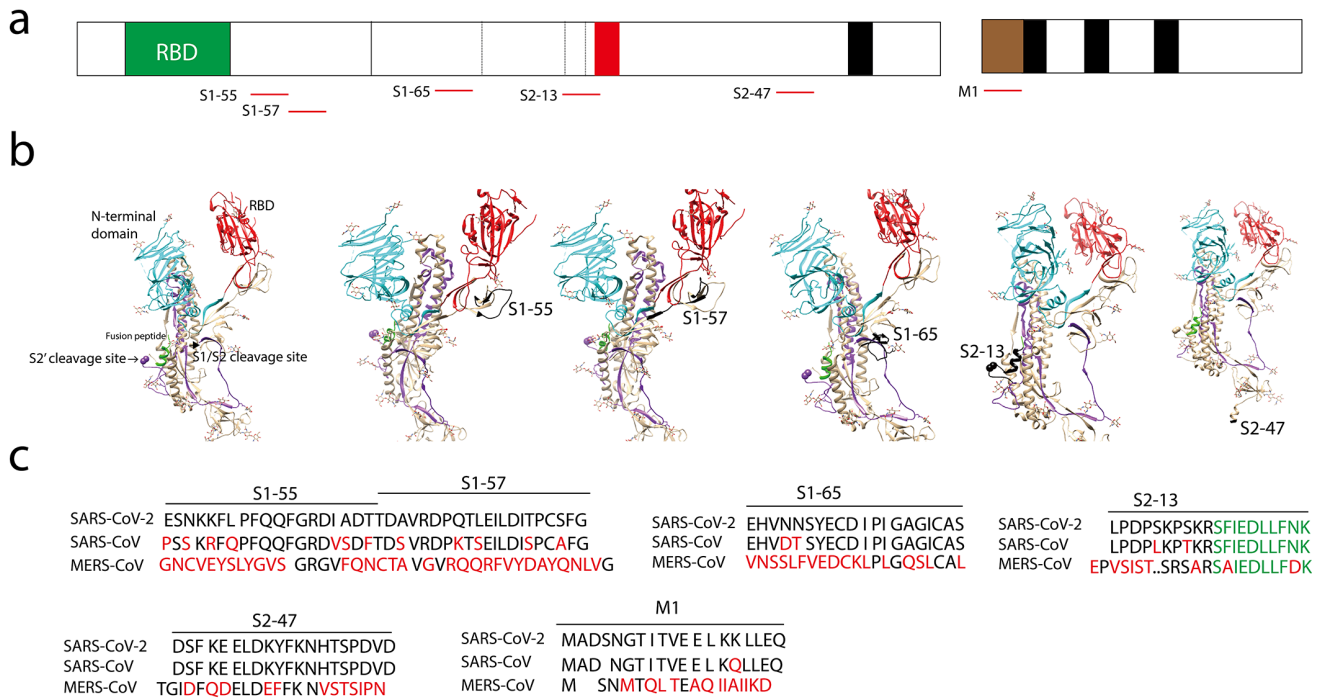
371

372 **Figure 1. Screening convalescent serum of COVID-19 by peptide array.** (a) Schematic of
 373 SARS-CoV-2 virion structural proteins: spike (S), membrane (M) and envelope (E) proteins. In the
 374 diagram of S, the receptor-binding domain (RBD) is in *red*. Fusion peptide (FP) is in *green*. Black
 375 boxes indicate transmembrane helices (TM). Arrows indicate S1/S2 cleavage site and alternative S2'
 376 cleavages sites, respectively. In the diagrams of M and E, the endodomains and ectodomains are
 377 indicated. The numbers above the diagrams indicate the positions (aa) of each domain. (b) Design
 378 of peptide array. 20-mer overlapped peptides covering the entire S, the ectodomain of M, the loops
 379 between the TMs and representative regions of endodomains of M and E were synthesized and dotted.
 380 (c-d) Convalescent serums from COVID-19 patients and control serums from non-COVID-19
 381 patients (control serum) were diluted (1:200) and incubated with peptide array, followed by
 382 incubated with HRP-conjugated anti-human IgG. Peptide array were visualized by
 383 chemiluminescent reagents, scanned and quantified. The peptides with signal to noise above 2 were
 384 counted as positive (black bar). The positive peptides for each patient were plotted. Arrows indicate
 385 representative peptides. (d) The positive percentage of the indicated peptides.

386

387

388 **Figure 2**

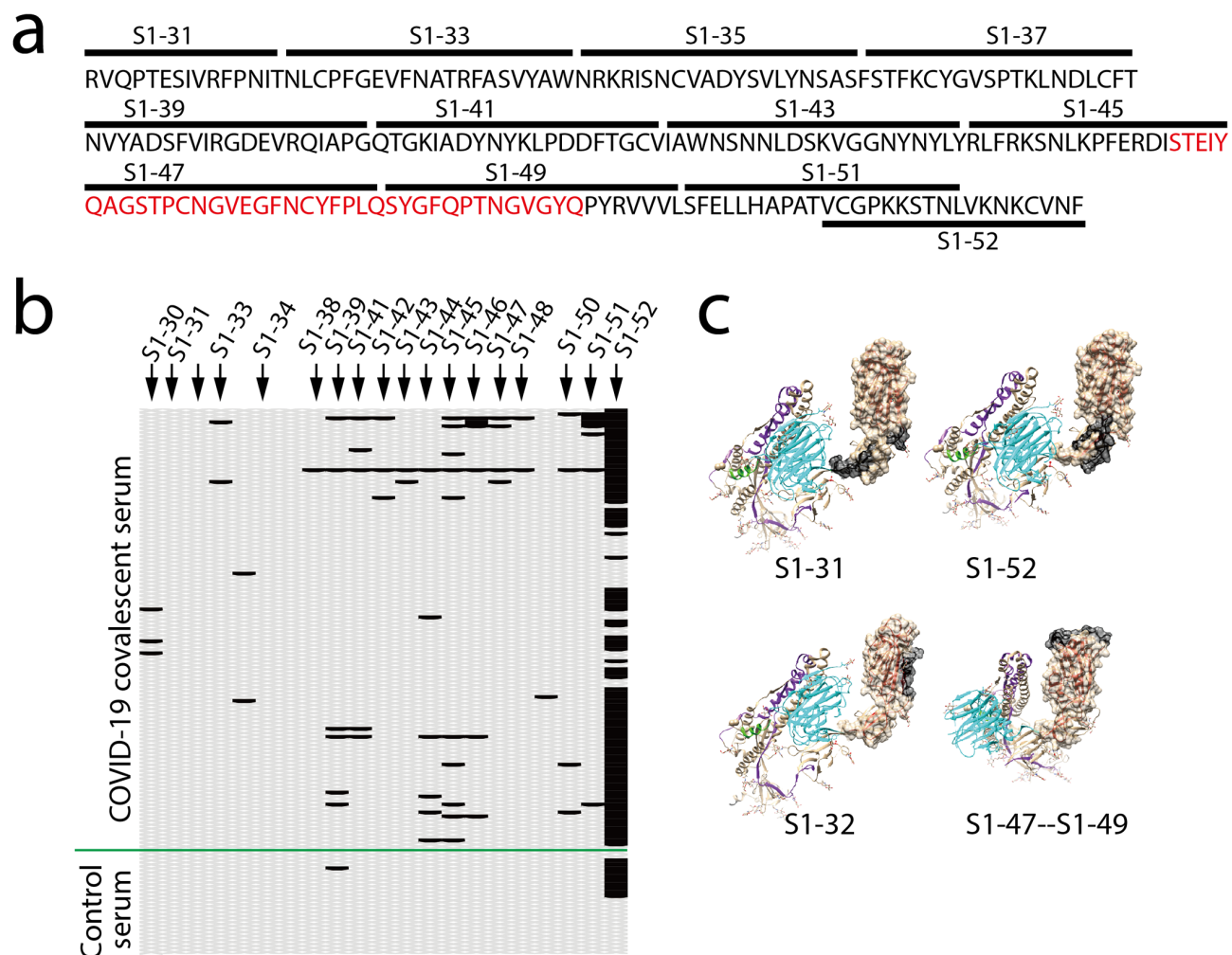


389

390 **Figure 2. Identification of dominant B-cell linear epitopes of SARS-CoV-2 virus particle.** (a)
 391 Schematic of spike (S), membrane (M) and the dominant B-cell linear epitopes (red lines). (b)
 392 Locations of the dominant B-cell linear epitopes in the S structure. The S structure (open state; PBD,
 393 6vyb), N-terminal domain (cyan), RBD (red), fusion peptide (green). The B-cell linear epitopes are
 394 in black. Only part of the S2-47 is visible in the structure. (c) Alignment of the dominant B-cell
 395 linear epitopes. Different amino acids are in red. Fusion peptide in S2-13 is in green.

396

397 **Figure 3**



398

399 **Figure 3. Less B-cell linear epitopes on Receptor binding domain (RBD) of Spike protein (S).**

400 (a) Amino acid sequence of RBD. Black bars indicate the corresponding peptides. The ACE-2

401 interacting interface was in red. (b) Reaction of COVID-19 convalescent serums with the peptides

402 in RBD. The peptides with signal to noise above 2 were counted as positive (black bar). (c)

403 Representative peptide (in black) in the structure of RBD (PDB, 6vyb).

404

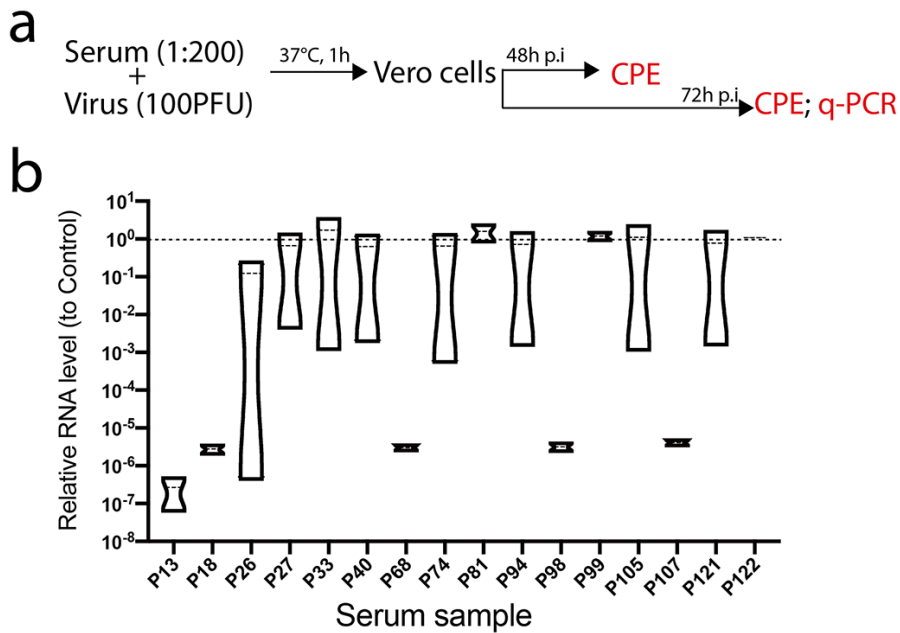
405

406

407

408

409 **Figure 4**

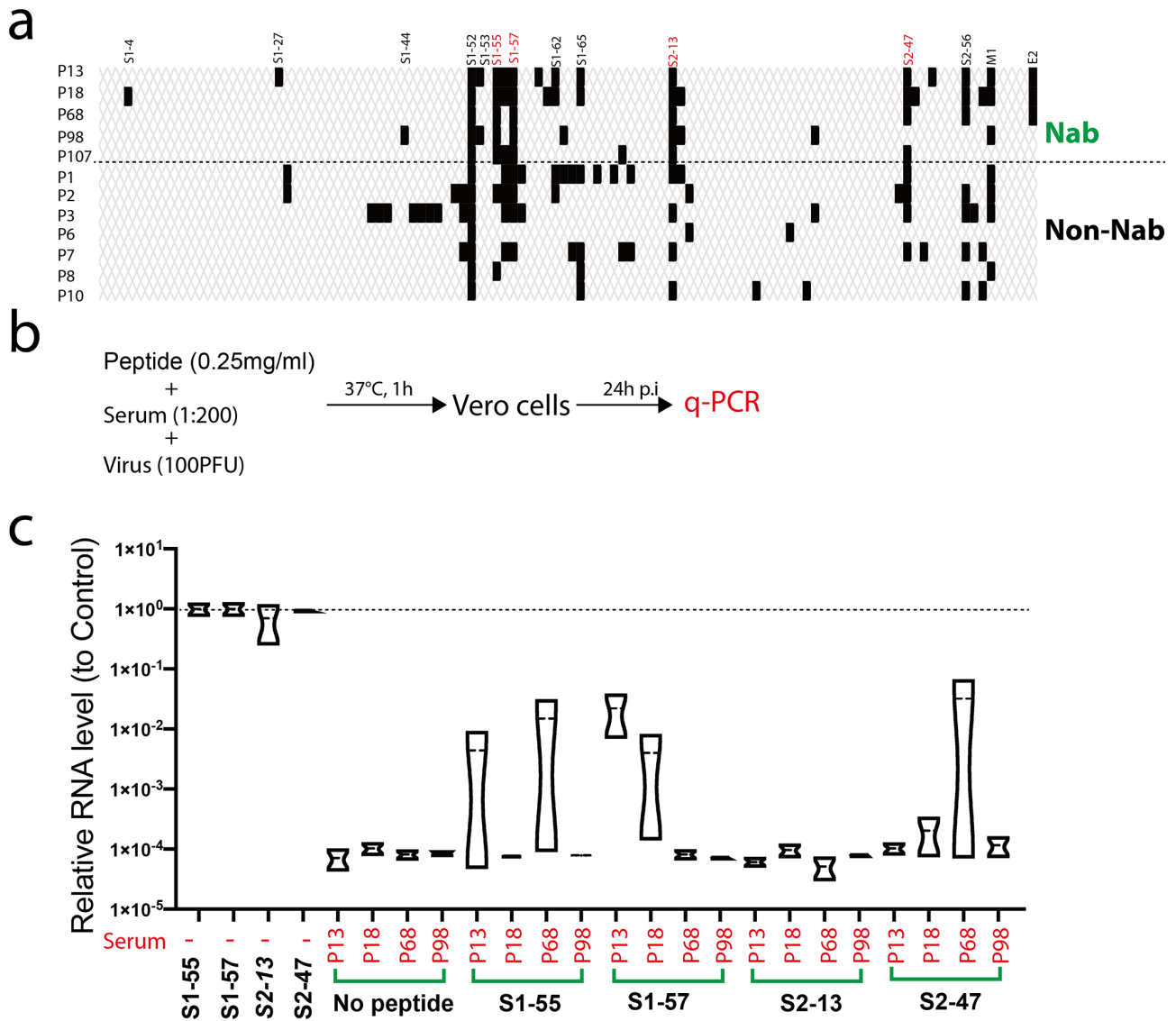


410

411 **Figure 4. Neutralizing SARS-CoV-2 infection by COVID-19 convalescent serum.** (a) Schematic
412 of experiment design. COVID-19 convalescent serums were diluted and incubated with
413 SARS-CoV-2 before added to the media. At 48 hours or 72 hours post infection (p.i), the cytopathic
414 effect (CPE) of the infected cells was examined. The viral RNAs in the supernatants were
415 quantified by real-time PCR (q-PCR). (b) Quantification of the viral RNA levels in the supernatants
416 from representative wells. Relative RNA levels to the mock-treated wells were plotted (n=2).

417

418 **Figure 5**



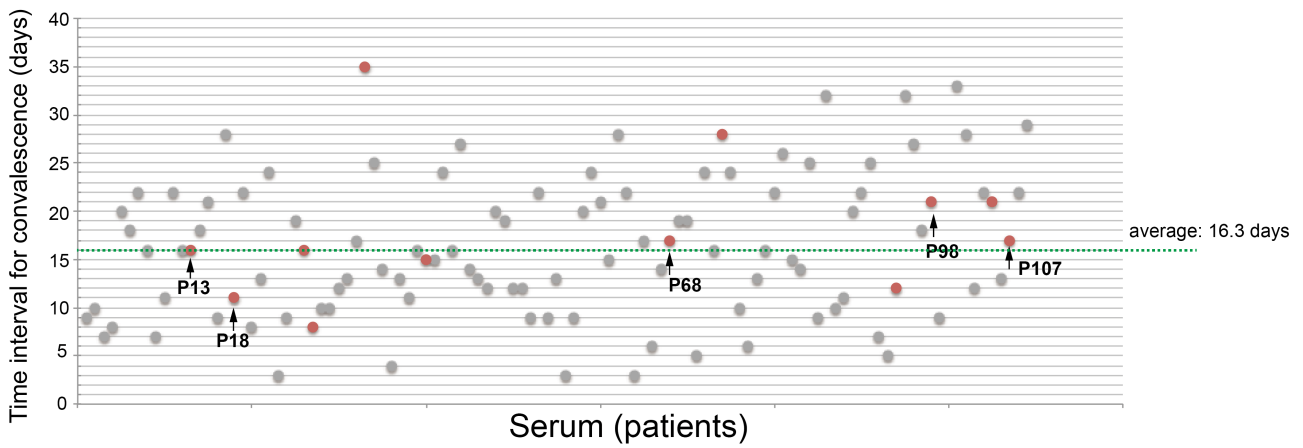
419

420 **Figure 5. Competing the neutralizing activity of convalescent serum with dominant B-cell**
 421 **linear epitopes.** (a) Reaction of the neutralizing antibodies (Nab) and non-neutralizing antibodies
 422 (Non-Nab) with the peptide array. The peptides with signal to noise above 2.1 were counted as
 423 positive (black bar). (b) Schematic of experiment design. Four neutralizing sera (P13, P18, P68
 424 and P98) were diluted and incubated with SARS-CoV-2 and the peptides (S1-55, S1-57, S2-13 and
 425 S2-47), respectively before added to the media. At 24 p.i, the viral RNAs in the supernatants were
 426 quantified by q-PCR. Experiment was done in duplicated well for each serum (b) Quantification of
 427 the viral RNA levels in the supernatants from representative wells. Relative RNA levels to the
 428 mock-treated wells were plotted (n=2).

429

430

431 **Figure 6**



432

433 **Figure 6. Time interval for convalescence.** Time intervals from symptom onset to SARS-CoV-2
434 triple negative diagnosis for throat swab, urine and feces. Serums with neutralizing activity are in
435 red. Arrows indicate fully neutralizing antibodies.

436

437

438

439

440

441

442