

Assessing the Age Specificity of Infection Fatality Rates for COVID-19: Systematic Review, Meta-Analysis, and Public Policy Implications

Andrew T. Levin, Gideon Meyerowitz-Katz, Nana Owusu-Boaitey,
Kensington B. Cochran, and Seamus P. Walsh

14 August 2020

Abstract: This paper assesses the age specificity of the infection fatality rate (IFR) for COVID-19 using seroprevalence results from eight national studies (Belgium, England, Hungary, Italy, Netherlands, Portugal, Spain, and Sweden), fifteen seroprevalence studies of specific locations in Europe and the United States, and three countries (Iceland, New Zealand, and Republic of Korea) that have engaged in comprehensive tracking and tracing of COVID-19 infections. The estimated IFR is close to zero for younger adults but rises exponentially with age, reaching about 0.3% for ages 50-59, 1.3% for ages 60-69, 4% for ages 70-79, 10% for ages 80-89. Our findings indicate that COVID-19 is not just dangerous for the elderly and infirm but also for healthy middle-aged adults. Consequently, the overall IFR for a given location is intrinsically linked to the age-specific pattern of infections, and hence protecting vulnerable age groups could substantially reduce the incidence of mortality.

Affiliations: Levin is a professor of economics at Dartmouth College, research associate of the NBER, and international research fellow of the Centre for Economic Policy Research. Meyerowitz-Katz is an epidemiologist at the University of Wollongong and research monitoring and surveillance coordinator at the Western Sydney Local Health District. Owusu-Boaitey has a Ph.D. in immunology and is currently engaged in graduate work in medicine and bioethics at the Case Western Reserve University School of Medicine. Cochran and Walsh are recent graduates of Dartmouth College.

Declaration: The authors have no financial interests nor any other conflicts of interest related to this study. No funding was received for conducting this study. The views expressed here are solely those of the authors and do not represent the views of any other person or institution.

Corresponding Author: Andrew T. Levin (andrew.t.levin@dartmouth.edu)

Assessing the Age Specificity of Infection Fatality Rates for COVID-19: Systematic Review, Meta-Analysis, and Public Policy Implications

**Andrew T. Levin, Gideon Meyerowitz-Katz, Nana Owusu-Boaitey,
Kensington B. Cochran, and Seamus P. Walsh
14 August 2020**

Objective: Determine age-specific infection fatality rates for COVID-19 to inform public health policies and communications that help protect vulnerable age groups.

Methods: Studies of COVID-19 prevalence were collected by conducting an online search of published articles, preprints, and government reports. A total of 74 studies were reviewed in depth and screened. Studies of 26 locations satisfied the inclusion criteria and were included in the meta-analysis. Age-specific IFRs were computed using the prevalence data in conjunction with reported fatalities four weeks after the midpoint date of the study, reflecting typical lags in fatalities and reporting. Meta-regression procedures in Stata were used to analyze IFR by age. The meta-regression results were compared with age-specific IFRs computed from four other studies -- an “out-of-sample” exercise commonly used in assessing validity of forecast models.

Results: Our analysis finds an exponential relationship between age and IFR for COVID-19. The estimated age-specific IFRs are close to zero for children and younger adults but rise to about 0.3% for ages 50-59, 1.3% for ages 60-69, and 4% for ages 70-79, 15% for ages 80-89, and 25% for ages 90 and above. Nearly all of the age-specific IFRs included in the meta-analysis fall within the 95% prediction interval of the meta-regression.

Discussion: These results indicate that COVID-19 is hazardous not only for the elderly but for middle-aged adults, for whom the infection fatality rate is more than 50 times greater than the annualized risk of a fatal automobile accident. Moreover, the overall IFR for COVID-19 should not be viewed as a fixed parameter but is intrinsically linked to the age-specific pattern of infections. Consequently, individual and collective efforts that minimize infections in older adults could substantially decrease total deaths.

	<u>Total as of July 15, 2020</u>	<u>Share of Infections</u>
NYC Residents	8 Million	NA
Estimated Infections	1.6 Million	100%
Symptomatic Cases	1.1 Million	65%
Reported Cases	220,000	12%
Hospitalization	55,000	3%
Fatalities	23,000	1%

Table 1: COVID-19 Cases in New York City

Introduction

As the COVID-19 pandemic has spread across the globe, some fundamental issues have remained unclear: How dangerous is COVID-19? And to whom? The answers to these questions have crucial implications in determining appropriate public health policies as well as informing prudent decision-making by individuals, families, and communities.

The severity of an infectious disease can be gauged in terms of its *infection fatality rate* (IFR), that is, the ratio of deaths to the total number of infected individuals. The IFR is readily observable for certain viruses, such as Ebola, where nearly every case is associated with severe symptoms and the incidence of fatalities is extremely high; for such diseases, the IFR is practically identical to the *case fatality rate* (CFR), that is, the ratio of deaths to reported cases. By contrast, most people who are infected with SARS-Cov-2—the virus that causes COVID-19—are asymptomatic or experience only mild symptoms such as headache or loss of taste and may be unlikely to receive a viral test or be included in official case reports. Consequently, reported cases tend to comprise a small fraction of the total number of infections, and hence the CFR is *not* an adequate metric for the true severity of the disease.

As shown in Table 1, assessing the IFR for COVID-19 is analogous to finding a needle in a haystack, especially in a dense urban area such as New York City (NYC). The New York State Department of Health recently conducted a large-scale seroprevalence study and estimated the NYC infection rate at about 22%, that is, 1.6 million out of 8 million NYC residents.¹ As of mid-July, NYC had about 220,000 reported COVID-19 cases, almost exactly one-tenth of the total number of infections.² About one-fourth of those reported cases were severe enough to require hospitalization, many of whom unfortunately succumbed to the disease. All told, fatalities represented about one-tenth of reported cases but only one-hundredth of all infections.

While the NYC data indicate an IFR of about 1%, analysis of other locations has produced a wide array of IFR estimates, e.g., 0.6% in Geneva, 0.8% in Spain, 1.3% in Belgium, and 2.2% in Italy. Indeed, a recent meta-analysis noted the high degree of heterogeneity across aggregate estimates of IFR and concluded that research on age-stratified IFR is “urgently needed to inform policymaking.”³

In this paper, we consider the hypothesis that the observed variation in IFR across locations may primarily reflect the age specificity of COVID-19 infections and fatalities. In particular, the overall IFR for a given location can be expressed as follows:

$$IFR = \sum_{a=1}^N POPSHARE_a * INFRATE_a * IFR_a$$

using data for N distinct age groups, where $POP SHARE_a$ denotes the share of age group a in the total population, $INFRATE_a$ denotes that age group's COVID-19 infection rate, and IFR_a denotes that age group's infection fatality rate. Demographic information about the age structure for a given location is readily available from census data. Consequently, a crucial task is to use age-specific measures of prevalence to assess age-specific IFRs.

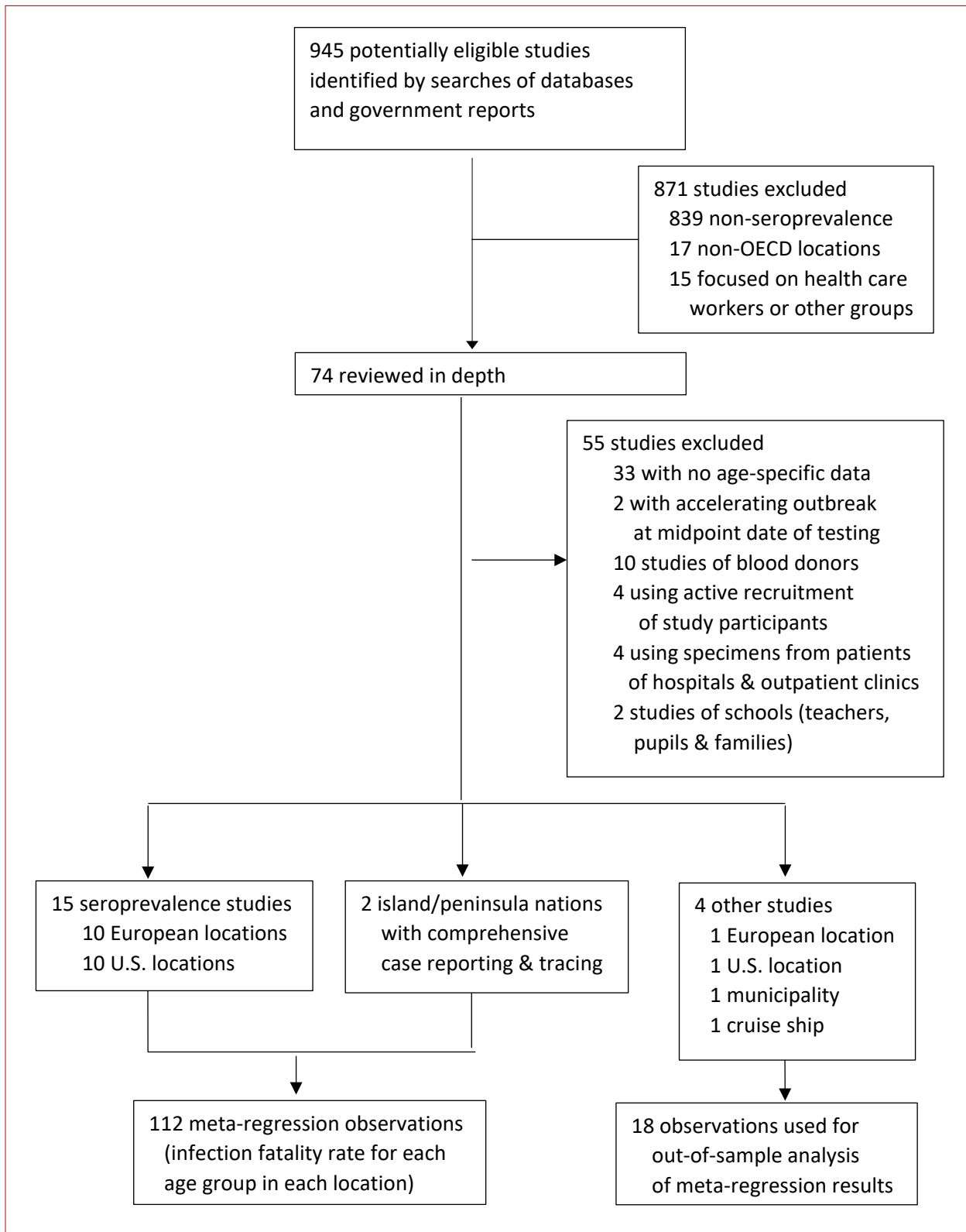


Figure 1: Study selection (PRISMA flow diagram)

Methodology

To perform the present meta-analysis, we collected published papers and preprints regarding the seroprevalence and/or infection fatality rate of COVID-19. To identify these studies, we systematically performed online searches in MedRxiv and Medline using the criterion ((“*infection fatality rate*” or “*IFR*” or “*seroprevalence*”) and (“*COVID-19*” or “*SARS-Cov-2*”). We identified other studies listed in reports by government institutions such as the U.K. Parliament Office.⁴ Finally, we confirmed the coverage of our search by referring to two recent meta-analysis studies of the overall IFR for COVID-19 and a recent meta-analysis of the ratio of measured seroprevalence to reported cases.^{3,5,6} Our search encompassed studies that were publicly disseminated prior to August 13. Data was extracted from studies by three authors and verified prior to inclusion.

Before proceeding further, we restricted our meta-analysis to studies of advanced economies, based on current membership in the Organization for Economic Cooperation and Development (OECD).⁷ It should be emphasized that we applaud recent efforts to assess seroprevalence in a number of developing countries (including Brazil, Croatia, Ethiopia, and Iran), but we have excluded those studies in light of the distinct challenges associated with health care provision and reporting of fatalities in those locations. We also excluded studies that were focused on measuring seroprevalence in a narrow segment of the population such as health care workers or pregnant women.

Our meta-analysis encompasses two distinct approaches for assessing prevalence: (1) extensive tracking and contact-tracing using live-virus testing and (2) seroprevalence studies that test for antibodies produced in response to the virus. Testing for the live virus is done by either a quantitative reverse-transcription polymerase chain reaction (qRT-PCR) molecular test for the viral nucleic acid sequence, or an antigen test for proteins specific to the virus. These tests detect the virus within a few days of disease onset. While live antigen tests provide data regarding the incidence of infections, comprehensive tracking and tracing programs have only been implemented in a small number of countries, notably the Republic of Korea (henceforth “Korea”), Iceland, and New Zealand.

Most studies of COVID-19 prevalence have proceeded using serological analysis to determine what fraction of the population has developed either IgG or IgM antibodies to the virus. IgM antibodies develop earlier, but decrease over time, while IgG antibodies develop later and remain in high concentrations for several months. Antibodies are tested for using several methods. Enzyme-linked immunosorbent assays (ELISA) proceed by tagging antibody-antigen interactions with a reporter protein. Chemiluminescent immunoassays (CLA) work similarly by tagging the antigen-antibody interaction with a fluorescent protein. Lateral Flow Assays (LFA), also known as rapid diagnostic tests (RDT), produce a colored band upon antigen-antibody interaction.

Recognizing that SARS-Cov-2 is both novel and hazardous, public regulatory agencies have issued “emergency use authorizations” (EUA) to facilitate the rapid deployment of live virus and

antibody tests based on the test characteristics reported by each manufacturer. Subsequent studies by independent laboratories have reassessed the characteristics of these test kits, in many cases finding markedly different results than those of the manufacturer. Such differences reflect (a) the extent to which test results may be affected by seemingly trivial differences in its implementation, and (b) the extent to which serological properties may vary across different segments of the population. For example, a significant challenge in producing accurate tests is to distinguish COVID-19 antibodies from those associated with other coronaviruses (including the common cold). Consequently, the assessment of test characteristics may vary with seemingly innocuous factors such as the season of the year in which the blood samples were collected.

The reliability of seroprevalence testing depends on three key factors: (1) the seroprevalence test's sensitivity (odds the test detects the virus in an infected person); (2) the seroprevalence test's specificity (odds the test returns a negative result for a uninfected person); and (3) the true disease prevalence in the sample. In a population where the actual prevalence is relatively low, the frequency of false-positive tests is crucial for determining the reliability of the test results.

The sensitivity and specificity of COVID-19 antibody tests should not be treated as fixed parameters that are known with a high degree of certainty, as would generally be the case for medical tests of other diseases that have been authorized via standard regulatory procedures. In particular, the confidence interval for each seroprevalence estimate should reflect the degree of uncertainty about its sensitivity and specificity as well as the conventional uncertainty that reflects the size of the sample used in producing that estimate.^{8,9} Indeed, a recent systematic review and meta-analysis found very substantial divergences in sensitivity and specificity of COVID-19 serological tests.¹⁰

Sampling Frame

To assess the prevalence of COVID-19 infections in the general population, a study should be specifically designed to utilize a random sample drawn from that population using standard survey procedures such as stratification and weighting by demographic and socioeconomic characteristics. To date, large-scale studies have followed this approach in assessing COVID-19 prevalence in Belgium, Geneva, Indiana, New York, Spain, and Sweden. For example, Spain's national seroprevalence study gathered specimens from a random sample of nearly 36,000 individuals, providing detailed results at 5-year age intervals from ages 5-9 through ages 85-89 as well as age categories for infants, small children, and elderly people ages 90 years and above.

Commercial Lab Specimens

An alternative approach is to measure seroprevalence using a "convenience sample" of blood specimens collected for some other purpose. In particular, a recent U.S. study analyzed residual sera from clinical blood samples that had been submitted to two commercial laboratories for routine testing; those samples were collected from about 16,000 patients in ten U.S. geographical locations over the period from March 23 to May 12, 2020. As noted in a companion editorial in the same medical journal, these data collection periods "*overlapped with active stay-at-home*

orders, when most medical appointments and elective admissions were deferred. Thus, the outpatient and inpatient populations included in the study are likely not representative of a typical prepandemic cohort; some of the discarded serum specimens from inpatients were likely obtained from patients hospitalized for COVID-19.”¹¹

That study illustrates several other limitations of convenience samples: (1) The seroprevalence results were adjusted using data provided by the commercial labs regarding patients’ gender, age group, and zip code, but could not be weighted by other demographic factors (such as race and ethnicity) or socioeconomic indicators. Such concerns about sample selection are underscored by the divergence between the seroprevalence estimates of two commercial labs for specimens from the New York City area, where the adjusted prevalence was 11.5% for Lab A and 5.7% for Lab B.¹² (2) The sample sizes were not tailored to ensure precise estimates in some locations with relatively low prevalence. For example, the 95% confidence intervals for all four age groups in the Minneapolis metropolitan area and in the San Francisco Bay Area included a value of zero; that is, the estimated level of seroprevalence was indistinguishable from a true value of zero. Since IFR is computed as a ratio with prevalence in the denominator, confidence intervals for age-specific IFRs cannot be computed in these two locations. (3) The collection dates of specimens from each location reflected idiosyncratic factors rather than the timeframe over which the pandemic was contained in that location. Indeed, as discussed further below, the New York City (NYC) sample was collected in late March when the outbreak was intensifying, and the outbreak does not appear to have been fully contained in several of the other locations (Louisiana, Minneapolis, Missouri, and Philadelphia).

Blood Donors

Prior research has shown that blood donors tend to be much younger than the general population. For example, a pre-pandemic study of U.K. blood donors found a median age of 28 years for new donors and a median age of 45 years for repeat donors, with very few donors over age 65.¹³ That limitation is particularly problematic in assessing IFRs for older age groups. The study also found that U.K. blood donors were more likely than the general population to be residents of urban areas, although that finding is likely linked to the age distribution of donors.

Those findings raise the concern that assessing seroprevalence for a sample of blood donors could overstate the true prevalence of COVID-19 if such individuals tend to be more gregarious and less risk-averse than non-donors. Indeed, such concerns were specifically flagged by the authors of a recent seroprevalence study who noted that blood donors “*might have a higher number of social interactions than other groups.*”¹¹

These concerns can be directly investigated by comparing two distinct U.K. seroprevalence surveys: Public Health England (PHE) gauges seroprevalence using specimens from blood donors, and the U.K. Office for National Statistics (ONS) gauges seroprevalence using specimens submitted for routine testing. As of early June, PHE reported seroprevalence of 8.5%, whereas ONS reported a markedly lower seroprevalence of 5.4% with a 95% confidence interval

of 4.3% to 6.5%; that is, the seroprevalence of PHE blood donors was markedly higher than that of the ONS sample, perhaps by as much as a factor of 2.^{14,15}

Hospitals and Urgent Care Clinics

As noted above, blood specimens provided for routine testing may overstate prevalence if a substantial fraction of those samples are taken from patients who have a live virus infection. But this sample selection issue is likely to be far more severe for hospitalized patients or those seeking urgent care at an outpatient clinic.

For example, the New York Department of Health assessed seroprevalence in a representative sample by collecting specimens at sites adjacent to supermarkets and grocery stores during the final week of April; that study estimated the prevalence in New York City at 22.7% (CI: 21.5 to 24%).¹⁶ By contrast, a subsequent seroprevalence study was conducted using 28,523 specimens collected from primary care providers and urgent care facilities in New York City and surrounding suburbs from May 5 to June 5 and found a raw prevalence rate of 44%.¹⁷ The entire area was in lockdown at that time, so it seems unlikely that prevalence rose by a factor of 2 during May. Rather, the most plausible explanation is that a substantial fraction of patients coming to urgent care clinics during that period were seeking medical attention for COVID-like symptoms and hence inflated the estimated prevalence.

Samples with Direct Recruitment of Participants

Some seroprevalence studies have involved direct recruitment of participants, raising the possibility that a substantial fraction of the sample may have volunteered for testing due to specific concerns about a previous or current COVID-19 infection and hence that the estimated prevalence could overstate the true prevalence in the general population.

This possibility can be evaluated using detailed results from a seroprevalence study conducted in Luxembourg.¹⁸ The authors specifically noted “*the need to recruit a representative sample of the Luxembourgish population over 18 years old within a short time frame in the context of the already existing confinement measures.*” The study obtained positive IgG results for 35 out of 1,807 participants (raw prevalence 2.1%). However, 15 of those 35 individuals indicated that they had (a) previously had a positive SARS-CoV-2 test, (b) were residing in a household with someone who had a confirmed positive test, or (c) had direct contact with someone else who was a confirmed or probable case. Of course, a truly random sample would also include such cases, but these results underscore the possibility that seroprevalence could be overstated by studies involving active recruitment, especially in a location with relatively low true prevalence.

In light of these considerations, our meta-analysis excludes seroprevalence estimates from studies that relied on direct recruitment of participants as well as estimates from samples of blood donors or patients at hospitals and urgent care clinics. We also exclude studies that did not report age-specific prevalence results. See Appendix A for further details.

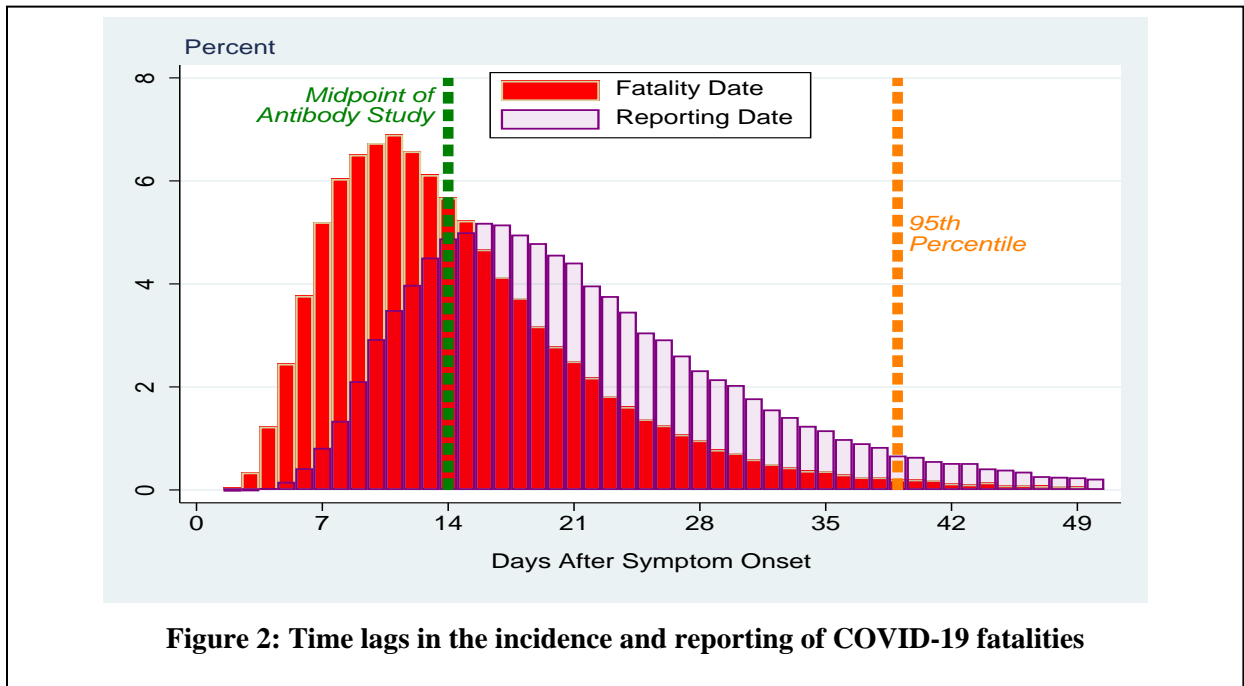


Figure 2: Time lags in the incidence and reporting of COVID-19 fatalities

Measurement of Fatalities

Accurately measuring total deaths is a non-trivial issue in assessing IFR due to time lags from onset of symptoms to death and from death to official reporting. Symptoms typically develop within 6 days after exposure, but may develop as early as 2 days or as late as 14 days.^{19,20} More than 95% of symptomatic COVID patients have positive antibody (IgG) tests within 17-19 days of symptom onset.^{21,22} The U.S. Center for Disease Control & Prevention estimates that the mean time interval from symptom onset to death is 15 days for ages 18-64 (interquartile range of about 9 to 24 days) and 12 days for ages 65+ (IQR of 7 to 19 days), while the mean interval from date of death to the reporting of that person's death is about 7 days (interquartile range of about 2 to 19 days), and hence the upper bound of the 95% confidence interval between symptom onset and reporting of fatalities is about six weeks (41 days).²³

Figure 1 illustrates a scenario in which the pandemic ended two weeks prior to the date of a seroprevalence study. This figure shows the results of a stochastic simulation calibrated to reflect the estimated distribution for the time lags between symptom onset, death, and inclusion in official fatality reports. The histogram shows the frequency of deaths and reported fatalities associated with the infections that occurred on the last day prior to full containment; consistent with the confidence intervals of the U.S. CDC's estimates, about 95% of cumulative fatalities are reported within roughly four weeks of the date of the seroprevalence study.

These considerations underscore the pitfalls of constructing IFRs based on the death toll at the midpoint date of a seroprevalence study, which is the approach that has been taken in most previous studies (including both of the meta-analysis studies of the overall IFR for COVID-19).

Location	Cumulative Fatalities			Percent Change	
	Study Midpoint	4 Weeks Later	5 Weeks Later	Weeks 0 to 4	Weeks 4 to 5
Belgium	6,262	8,843	9,150	41	3
Geneva	255	287	291	13	1
Indiana	932	1,984	2,142	113	8
New York	20,212	28,663	29,438	42	3
Spain	26,834	27,136	28,324	1	4
Sweden	2,586	3,831	3,940	48	3
Connecticut	2,257	3,637	3,686	61	1
Louisiana	477	2,012	2,286	322	14
Minneapolis, MN	393	964	1093	145	13
Missouri	218	562	661	158	18
Philadelphia, PA	456	1509	1754	231	16
San Francisco, CA	265	424	449	60	6
Miami, FL	513	1,160	1,290	126	11
Utah	41	96	98	134	2
Seattle, WA	536	732	775	37	6

Table 2: Timing of Reported Fatalities for Selected Seroprevalence Studies

In particular, as shown in Table 2, the cumulative fatalities at the time of a seroprevalence study can markedly understate the full death count as of four weeks later. Each of these studies was conducted in a location where the pandemic had been contained by the time that seroprevalence was measured, as evident from the fact that the fatality count leveled off over the subsequent month.

Evidently, the precise timing of the count of cumulative fatalities is relatively innocuous in locations (such as Spain and Castiglione d'Adda) where the outbreak had been contained for more than a month prior to the date of the seroprevalence study. But for the other studies shown in Table 2, the outbreak had only recently been contained, and hence the death count continued rising markedly for several more weeks after the midpoint of the seroprevalence study.

For each of those locations, matching seroprevalence to the death count at the midpoint date of the study would significantly underestimate the true level of the IFR. For example, in the

case of New York state, computing the IFR using the 4-week fatality count is nearly 1.5 times higher than using the fatality count at the midpoint date of that study (which was conducted in late April).

In light of these findings, we construct age-specific IFRs using the seroprevalence data in conjunction with cumulative fatalities four weeks after the midpoint date of each seroprevalence study. We have also conducted sensitivity analysis using cumulative fatalities five weeks after the midpoint date. When the change in cumulative fatalities is less than 10%, this choice has negligible impact on the estimates and confidence intervals of the age-specific IFRs, especially compared to the width of the confidence intervals for the seroprevalence estimates that reflect uncertainties about test characteristics as well as conventional sampling uncertainty.

By contrast, matching prevalence estimates with subsequent fatalities is infeasible if the seroprevalence study takes place in the midst of an accelerating outbreak. In particular, if infections and fatalities continue rising exponentially over subsequent weeks, there is *no* precise way of determining what fraction of those deaths resulted from infections before vs. after the date of the seroprevalence study. Therefore, a key criterion for seroprevalence studies to be included in our meta-analysis is that the pandemic is well contained in advance of the study, as indicated by the stabilization of cumulative fatalities within the next several weeks after the midpoint date of the study. Of course, a seroprevalence study can provide valuable information even in the midst of an active outbreak, but such results are not well-suited for gauging IFRs.

Meta-Regression Procedure

To analyze IFR by age, we use meta-regression with random effects, using the *meta regress* procedure in *Stata* v16.^{24,25} Random-effects procedures allow for residual heterogeneity between studies and across age groups by assuming that these divergences are drawn from a Gaussian distribution. The procedure provides reasonable results even if the errors are not strictly normal but may be unsatisfactory if the sample includes large outliers or the distribution of groups is not unimodal. In analytical terms, this framework can be expressed as follows:

$$\log(IFR_{ij}) = \alpha + \beta * age_{ij} + \epsilon_{ij} + u_{ij}$$

$$\text{where } u_{ij} \sim N(0, \tau^2) \text{ and } \epsilon_{ij} \sim N(0, \sigma_{ij}^2)$$

In this specification, IFR_{ij} is the estimated IFR in study i for age group j , age_{ij} denotes the median age of that group, ϵ_{ij} denotes the source of idiosyncratic variations for that particular location and age group, and u_{ij} denotes the random effects that characterize any systematic deviations in outcomes across locations and age groups. Under the maintained assumption that each idiosyncratic term ϵ_{ij} has a normal distribution, the idiosyncratic variance is $\sigma_{ij}^2 = ((U_{ij} - L_{ij})/3.96)^2$, where U_{ij} and L_{ij} denote the upper and lower bounds of the 95% confidence interval for that study-age group. The random effects u_{ij} are assumed to be drawn from a homogeneous distribution with zero mean and variance τ^2 . The null hypothesis of $\tau^2 = 0$ characterizes the case in which there are no systematic deviations across studies or

age groups. If that null hypothesis is rejected, then the estimated value of τ^2 encapsulates the magnitude of those systematic deviations.

Under our baseline specification, the infection fatality rate increases exponentially with age.¹ In particular, this meta-regression is specified in logarithmic terms, with the slope coefficient β encapsulating the impact of higher age on $\log(IFR)$. Consequently, the null hypothesis that IFR is unrelated to age can be evaluated by testing whether the value of β is significantly different from zero. If that null hypothesis is rejected, then the estimated values of α and β characterize the estimated relationship between $\log(IFR)$ and age. Consequently, the predicted relationship between IFR and age can be expressed as follows:

$$IFR = e^{\alpha + \beta * age_{ij}}$$

The 95% confidence interval for this prediction can be obtained using the delta method. In particular, let IFR_a denote the infection fatality rate for age a , and let σ_c denote the standard error of the meta-regression estimate of $\log(IFR_a)$. If IFR_a has a non-zero value, then the delta method indicates that its standard error equals σ_c / IFR_a , and this standard error is used to construct the confidence interval for IFR_a at each age a . Likewise, the prediction interval for $\log(IFR_a)$ is computed using a standard error of $\sigma_c + \tau$ that incorporates the systematic variation in the random effects across studies and age groups, and hence the corresponding prediction interval for IFR_a is computed using a standard error of $(\sigma_c + \tau) / IFR_a$.

In estimating this metaregression, we only use observations for age groups with a median age of 35 years or higher. COVID-19 fatality reports from numerous locations indicate that the age-specific IFR is extraordinarily close to zero for children and young adults. For example, at the end of May Belgium had a cumulative total of 9,150 deaths, with not a single fatality for ages 0 to 24 years.

¹ Bonanad et al. (2020) conducted a meta-analysis study of COVID-19 case fatality rates as a function of age using aggregate data from China, Italy, New York, Spain, and the U.K. and found a very strong exponential pattern of mortality: ages 40-49: 1.1%; ages 50-59: 3%; ages 60-69: 9.5%; ages 70-79 22.8%; ages 80+: 29.6%. Similarly, Doherty et al. (2020) investigated a large sample of U.K. hospitalized COVID-19 patients and identified an exponentially increasing mortality hazard rate as a function of patient age.

Location	Population, millions	Sample size, thousands	Dates in 2020	Age-specific prevalence and 95% confidence interval (%)
<i>Representative samples</i>				
Belgium ²⁶	11.590	16.532	April 20–26	0–24 yrs: 6.0 (4.2–8.6) 25–44 yrs: 5.9 (4.2–8.3) 45–64 yrs: 6.2 (4.7–8.3) 65–74 yrs: 4.1 (2.3–7.2) 75–84 yrs: 7.0 (4.2–11.7) 85+ yrs: 13.2 (8.9–19.6)
England ²⁷	56.286	109.076	June 20–July 13	18–24 yrs: 7.9 (7.3–8.5) 25–34 yrs: 7.8 (7.4–8.3) 35–44 yrs: 6.1 (5.7–6.6) 45–54 yrs: 6.4 (6.0–6.9) 55–64 yrs: 5.9 (5.5–6.4) 65–74 yrs: 3.2 (2.8–3.6) 75+ yrs: 3.3 (2.9–3.8)
Hungary ²⁸	9.660	10.474	May 1–16	0–14 yrs: 0.6 (0.3–0.9) 15–39 yrs: 0.6 (0.3–0.9) 40–64 yrs: 0.7 (0.4–1.0) 65+ yrs: 0.8 (0.4–1.3)
Iceland ²⁹	0.341	9.199	February 1–June 15	0–29 yrs: 0.4 (0.3–0.5) 30–59 yrs: 1.1 (0.8–1.6) 60–69 yrs: 0.5 (0.3–1.0) 70–79 yrs: 0.3 (0.27–1.3) 80+ yrs: 0.2 (0.1–2.5)
Italy ³⁰	60.345	64.660	July 6–27	0–19 yrs: 2.2 (1.7–2.8) 20–29 yrs: 2.1 (1.7–2.4) 30–49 yrs: 2.4 (2.1–2.8) 50–59 yrs: 3.1 (2.7–3.5) 60–69 yrs: 2.6 (2.1–2.9) 70+ yrs: 2.5 (2.1–2.9)
Netherlands ^{31,32}	17.135	2.096	April 1–17	0–49 yrs: 3.5 (2.5–5.2) 50–59 yrs: 4.3 (3.2–5.8) 60–69 yrs: 3.5 (2.5–5.0) 70–79 yrs: 3.0 (1.7–5.3) 80+ yrs: 2.8 (0.9–7.3)
Portugal ³³	10.197	2.301	May 21–July 8	0–9 yrs: 2.1 (0.8–5.4) 10–19 yrs: 2.1 (0.8–5.5) 20–39 yrs: 0.7 (0.1–4.8) 40–59 yrs: 2.4 (0.9–5.9) 60+ yrs: 2.4 (1.1–4.9)
Spain ³⁴	46.755	51.958	May 18–June 1	0–29 yrs: 4.5 (3.4–6.1) 30–39 yrs: 5.0 (4.1–6.0) 40–49 yrs: 5.3 (4.6–6.2) 50–59 yrs: 5.2 (4.5–6.1) 60–69 yrs: 5.0 (4.1–5.9) 70–79 yrs: 4.6 (3.7–5.9) 80+ yrs: 4.8 (3.5–6.7)
Sweden ³⁵	10.099	2.000	April 27–May 24	0–19 yrs: 5.7 (4.5–7.0) 20–49 yrs: 6.5 (5.2–7.8) 50–69 yrs: 4.8 (3.6–6.0) 70+ yrs: 3.1 (2.1–4.1)
Geneva, Switzerland ³⁶	0.507	2.766	April 13–May 8	5–19 yrs: 9.2 (5.4–14.1) 20–49 yrs: 13.1 (9.8–17.0) 50–64 yrs: 10.5 (7.3–14.1) 65+ yrs: 6.8 (3.8–10.5)
Atlanta, USA ³⁷	1.823	0.696	April 28–May 3	0–17 yrs: 0.0 (0.0–1.0) 18–49 yrs: 3.3 (1.6–6.4) 50–64 yrs: 4.9 (1.8–12.9) 65+ yrs: 0.7 (0.1–4.5)

(Table 3 continues on next page)

Location	Population, millions	Sample size, thousands	Dates in 2020	Age-specific prevalence and 95% confidence interval (%)
Representative samples (contd.)				
Indiana, USA ³⁸	6.732	3.632	April 25–29	0–39 yrs: 3.1 (1.9–4.3) 40–59 yrs: 3.1 (1.9–5.0) 60+ yrs: 1.7 (1.0–2.4)
New York, USA ¹⁶	19.454	15.101	April 23	0–19 yrs: 14.6 (13.1–16.1) 20–39 yrs: 14.6 (13.1–16.1) 40–49 yrs: 15.3 (13.7–17.0) 50–59 yrs: 16.0 (14.6–17.5) 60+ yrs: 12.1 (11.2–13.1)
Salt Lake City, USA ³⁹	2.194	6.527	May 4–June 10	0–44 yrs: 1.2 (0.4–2.5) 45–64 yrs: 0.9 (0.2–2.1) 65+ yrs: 0.6 (0.0–1.4)
Convenience samples				
Connecticut, USA ¹²	3.565	1.431	April 26–May 3	0–19 yrs: 0.8 (0.0–2.9) 20–49 yrs: 6.1 (3.1–9.3) 50–59 yrs: 8.1 (4.8–1.6) 60+ yrs: 4.2 (2.3–6.0)
Louisiana, USA ¹²	4.649	1.184	April 1–8	0–18 yrs: 2.8 (0.0–11.5) 19–49 yrs: 7.4 (4.7–10.0) 50–59 yrs: 8.3 (4.5–11.9) 60+ yrs: 4.4 (1.5–8.0)
Miami, USA ¹²	6.327	1.742	April 6–10	0–19 yrs: 2.4 (0.0–7.8) 20–49 yrs: 0.9 (0.2–2.2) 50–59 yrs: 2.0 (0.3–4.0) 60+ yrs: 3.0 (1.7–4.5)
Minneapolis, USA ¹²	3.894	0.860	April 30–May 12	0–18 yrs: 5.8 (0.0–14.3) 19–49 yrs: 2.3 (0.8–4.2) 50–59 yrs: 0.7 (0.0–2.8) 60+ yrs: 1.0 (0.0–3.2)
Missouri, USA ¹²	6.137	1.882	April 20–26	0–19 yrs: 1.4 (0.0–4.1) 20–49 yrs: 3.4 (1.4–5.5) 50–59 yrs: 2.0 (0.5–3.8) 60+ yrs: 3.2 (1.9–4.6)
Philadelphia, USA ¹²	4.934	0.824	April 13–25	0–18 yrs: 2.2 (0.0–6.9) 19–49 yrs: 5.9 (2.4–9.8) 50–64 yrs: 0.8 (0.0–2.8) 65+ yrs: 1.6 (0.3–3.5)
San Francisco, USA ¹²	6.660	1.224	April 23–27	0–18 yrs: 1.7 (0.0–7.7) 19–49 yrs: 1.1 (0.0–2.6) 50–64 yrs: 0.7 (0.0–2.4) 65+ yrs: 0.9 (0.2–2.5)
Seattle, USA ¹²	4.326	3.264	March 23–April 1	0–19 yrs: 0.7 (0.0–2.5) 20–39 yrs: 1.3 (0.7–2.3) 40–59 yrs: 0.9 (0.3–1.9) 60+ yrs: 1.7 (0.9–2.7)
Comprehensive tracing programs				
New Zealand ⁴⁰	4.822	1.945	February 1–July 9	0–59 yrs: 0.1 (0.05–0.15) 50–69 yrs: 0.07 (0.04–0.10) 70–79 yrs: 0.04 (0.02–0.07) 80+ yrs: 0.04 (0.02–0.06)
Republic of Korea ⁴¹	51.269	13.106	February 1–May 17	0–29 yrs: 0.11 (0.05–0.17) 30–39 yrs: 0.08 (0.04–0.12) 40–49 yrs: 0.06 (0.03–0.09) 50–59 yrs: 0.07 (0.03–0.10) 60–69 yrs: 0.05 (0.03–0.08) 70–79 yrs: 0.05 (0.03–0.07) 80+ yrs: 0.06 (0.03–0.09)
For locations with comprehensive tracing programs, sample size refers to the estimated total number of cases.				
Table 3: Characteristics of studies included in meta-regression				

Results

After an initial screening of 944 studies, the full texts of 73 studies were reviewed, of which 33 studies were excluded due to lack of age-specific data on COVID-19 prevalence or fatalities.^{15,42-73} Two seroprevalence studies of New York City were excluded because the outbreak was still accelerating at the time of each study.^{12,17} Studies of non-representative samples were excluded as follows: 10 studies of blood donors, 4 studies of patients of hospitals and outpatient clinics, 4 studies with active recruitment of participants, and 2 studies of elementary schools.^{18,74-87} Consequently, our meta-analysis focuses on synthesizing IFR data from 24 locations, which can be classified into four distinct groups:

- **Randomized Samples** include national studies of Belgium, England, Hungary, Italy, Netherlands, Portugal, Spain, and Sweden and regional studies of Geneva, Switzerland and four U.S. locations (Atlanta, Indiana, New York, and Salt Lake City). Each of these studies used a sample frame that was broadly representative of the general public.
- **Comprehensive Tracking and Tracing Countries:** Iceland, Korea, and New Zealand. Iceland researchers also conducted a large-scale seroprevalence study, which is used in computing age-specific IFRs for Iceland. That study also indicates that reported cases in Iceland substantially understated actual prevalence, especially for younger age groups; consequently, we make corresponding adjustments for Korea and Iceland.
- **Convenience Samples** include eight U.S. locations of Connecticut, Louisiana, Miami, Minneapolis, Missouri, Philadelphia, San Francisco, and Seattle; seroprevalence rates for these locations were reported in a study conducted by researchers at the U.S. Center for Disease Control & Prevention using specimens from two commercial laboratories.¹² Consequently, these findings have significant risk of outcome bias associated with the sample data frame. Moreover, in four of these locations (Louisiana, Minneapolis, Missouri, and Philadelphia), cumulative fatalities were still mounting rapidly four weeks after the midpoint date of specimen collections, reflecting the extent to which the pandemic was not yet tightly contained. Consequently, some additional caution is warranted in interpreting age-specific IFRs from those four locations.
- **Other Studies:** Prevalence and fatality data from the Diamond Princess cruise ship has been influential in informing subsequent studies of COVID-19. Castiglione d'Adda is the municipality that was the location of the first COVID-related fatality in Italy. Our metaregression includes a very large seroprevalence study of the English population, and hence another study conducted by U.K. Biobank is included in our meta-analysis but not in our metaregression to avoid pitfalls of nested or overlapping samples. Likewise, our metaregression includes a large study of a representative sample in Salt Lake City, and hence the seroprevalence results obtained from a convenience sample of Utah residents is included in our meta-analysis but not in the metaregression.

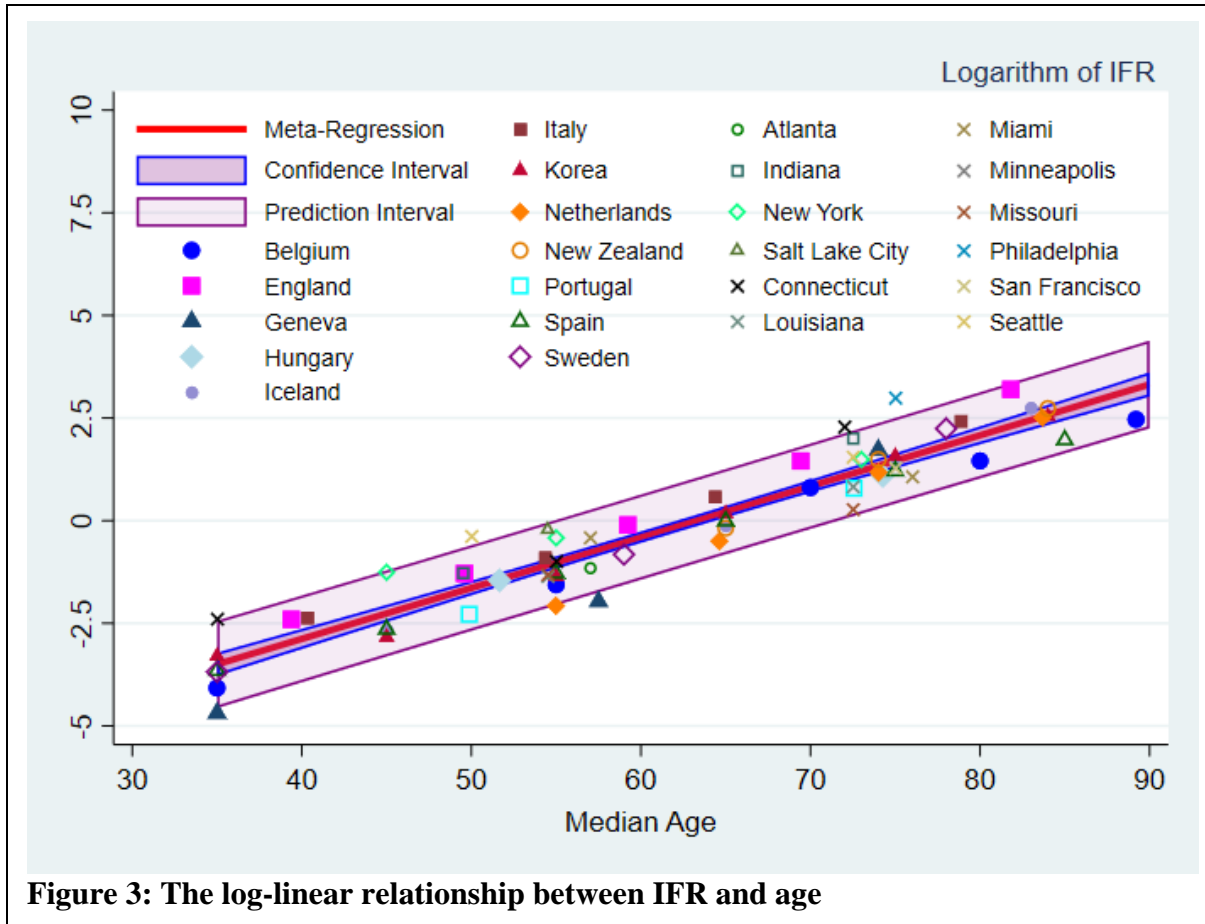


Figure 3: The log-linear relationship between IFR and age

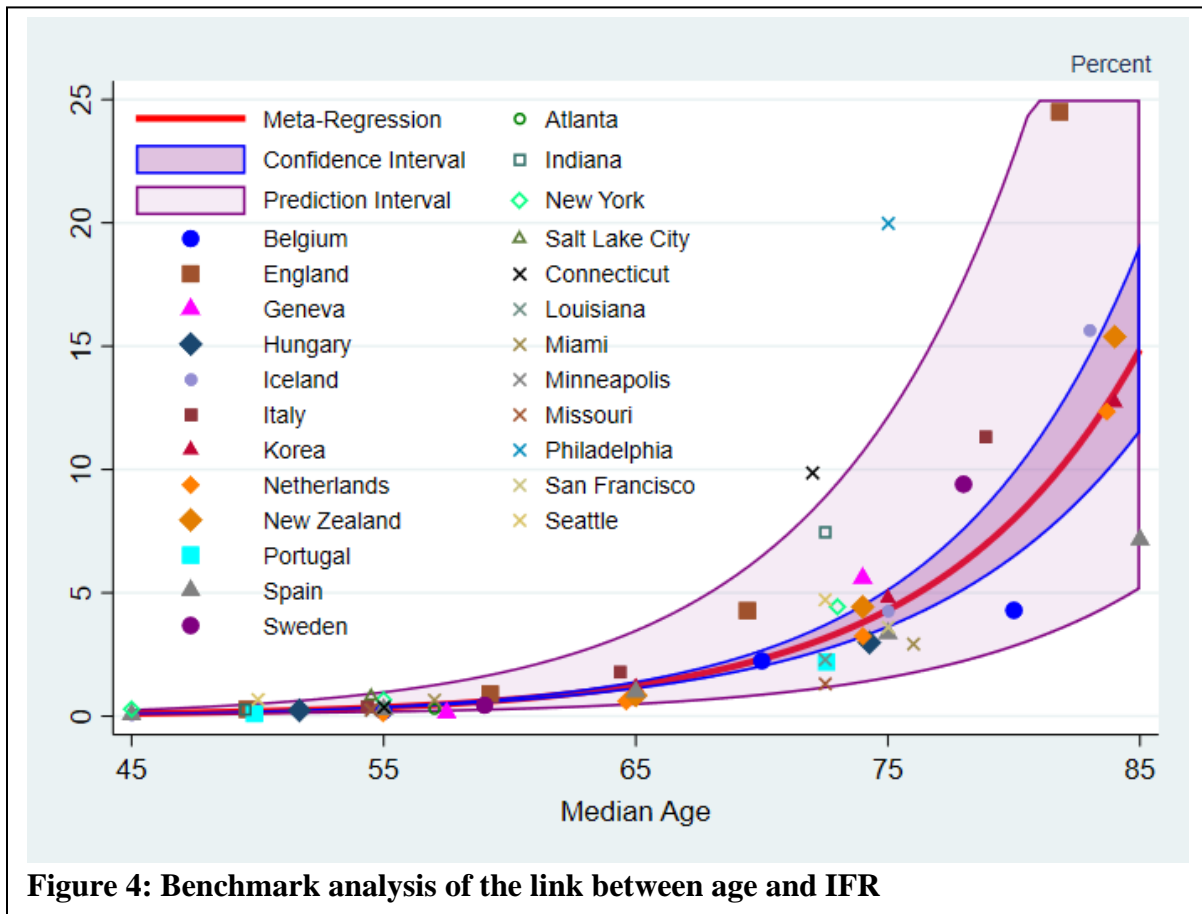
We obtain the following meta-regression results:

$$\log(IFR_{ij}) = -7.83 + 0.124 * age$$

(0.30) (0.005)

where the standard error for each estimated coefficient is given in parentheses. These estimates are highly significant with t-statistics of -26.0 and 26.1, respectively, and p-values below 0.0005. The residual heterogeneity $\tau^2 = 0.275$ (p-value < 0.0001), with $I^2 = 95.7$, confirming that the random effects are essential for capturing unexplained variations across studies and age groups. The adjusted R^2 is 92.3%.

As noted above, the validity of this meta-regression rests on the condition that the data are consistent with a Gaussian distribution, i.e., there should be no clustering of observations or extreme outliers. The validity of those assumptions is evident in Figure 3. The solid red line depicts the estimated log-linear function, the dark shaded area denotes the 95% confidence interval for that estimated function, and the light shaded area denotes the 95% prediction interval that reflects the random variations across studies and age groups. The markers denote the age-specific IFRs from each study, which provide relatively balanced coverage spanning the entire age interval from 35 to 90 years. Moreover, nearly all of the observations fall within the



95% prediction interval. Two observations (both from the Geneva study) are at the lower edge of the prediction interval, while a few observations (all from convenience samples) lie at or above the upper edge of the prediction interval. This pattern broadly matches the incidence of moderate outliers that one would expect in a sample of 112 draws from a Gaussian distribution.²

Figure 4 depicts the exponential relationship between age and the level of IFR in percent. Evidently, the SARS-CoV-2 virus poses a substantial mortality risk for middle-aged adults and even higher risks for elderly people: The IFR is close to zero for younger adults but rises to about 0.3% for ages 50-59, 1.2% for ages 60-69, about 4% for ages 70-79, 14% for ages 80-89, and exceeds 25% for ages 90 and above.

The age-specific IFRs from small-scale prevalence studies of the Diamond Princess cruise ship and the municipality of Castiglione d'Adda are broadly consistent with these meta-regression results. For example, 619 individuals on Diamond Princess had confirmed positive test results, and 14 of them died due to COVID-related causes; the IFR was 0.5% for ages 60-69, 2.9% for ages 70-79, and 7.9% for ages 80+, broadly consistent with the metaregression results of this study. Moreover, the metaregression predicts an IFR of 0.3% for ages 50-59 years, but Diamond

² We have also used the output of the Stata *metareg* procedure to confirm that the estimated random effects are consistent with a normal distribution.

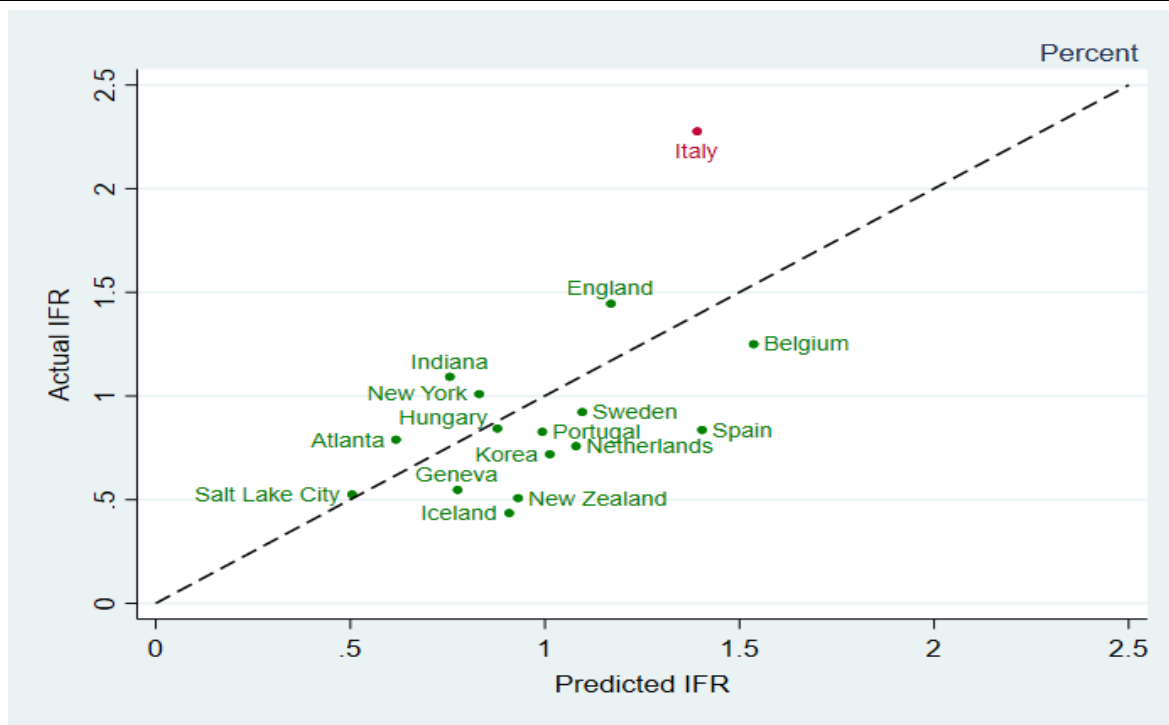


Figure 5: Variations in population IFR across geographical locations

Princess had only 60 infected individuals in that age group, and hence the lack of fatalities within that particular age cohort is not inconsistent with the metaregression results.

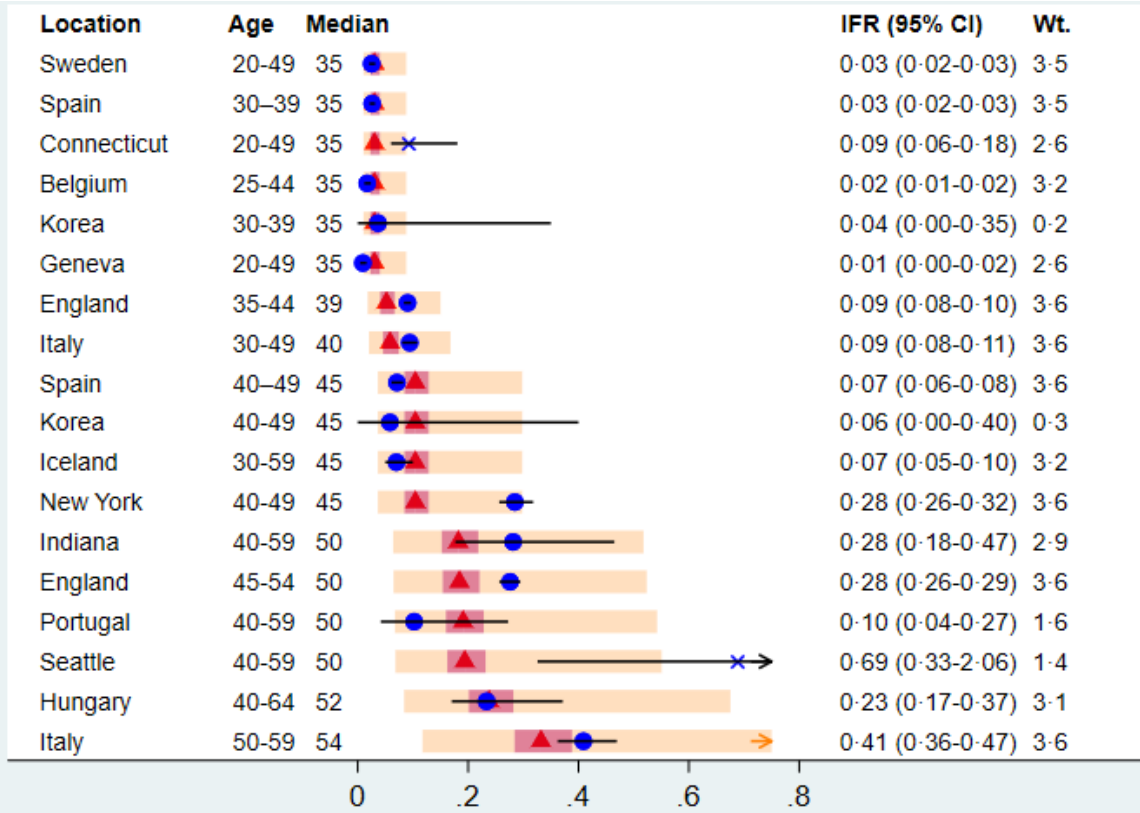
It should also be noted that the pathbreaking study of Ferguson et al. (2020) is broadly consistent with the metaregression results reported here. That study was completed at a very early stage of the COVID-19 pandemic, drawing on data from expatriation flights to estimate infection rates in Wuhan and then computing age-specific IFRs based on reported fatalities in Wuhan. The resulting IFR estimates exhibited an exponential link to age, with rates near zero for ages 0-39 and far higher rates for older adults.

As shown in Figure 5, the metaregression explains a large fraction of the variations in population-level IFRs across geographical locations. This relationship can be documented quantitatively as follows:

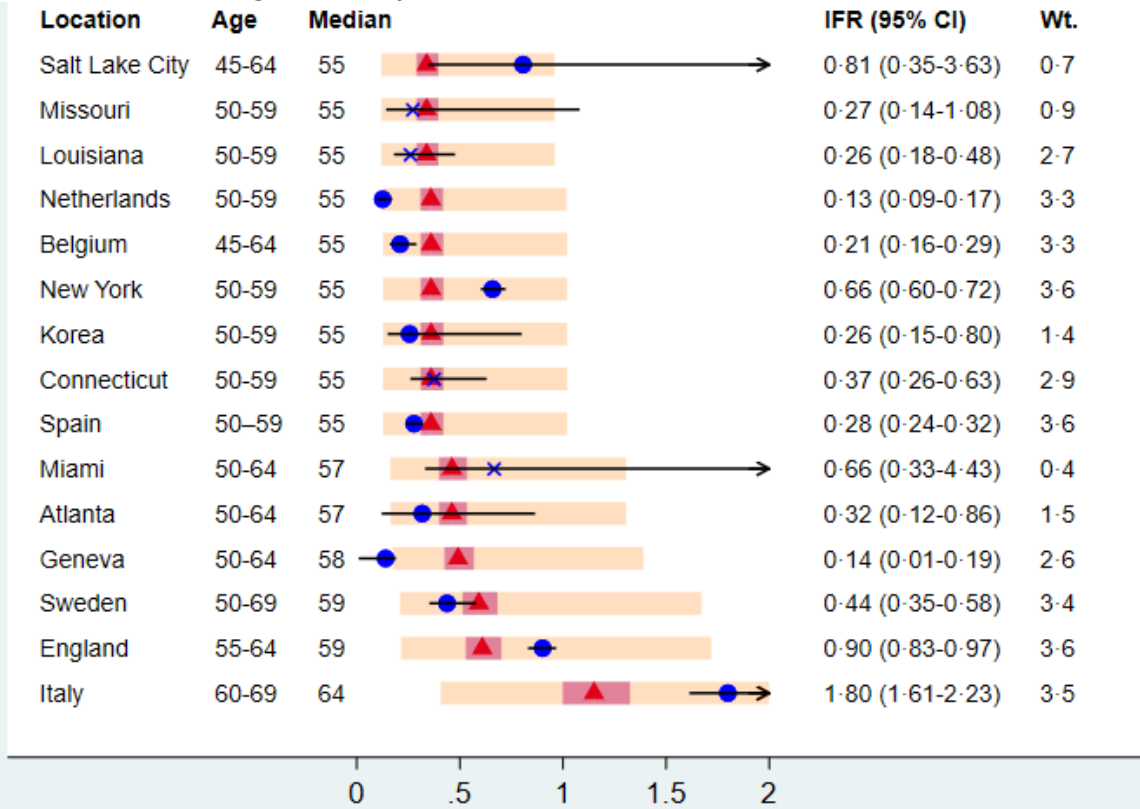
$$\log(IFR_i) = 0.932 * \widehat{IFR}_i \\ (0.09)$$

where IFR_i denotes the IFR for each location i , computed using the observed fatalities in conjunction with estimated prevalence, while \widehat{IFR}_i denotes the predicted IFR for that location computed using the metaregression estimates for age-specific IFRs in conjunction with age-specific prevalence. The regression has $R^2 = 0.88$, indicating that nearly 90% of the variation in population IFR across geographical locations can be explained in terms of differences in the age structure of the population and the age-specific prevalence of COVID-19.

Cohorts with median age of 35-54 years

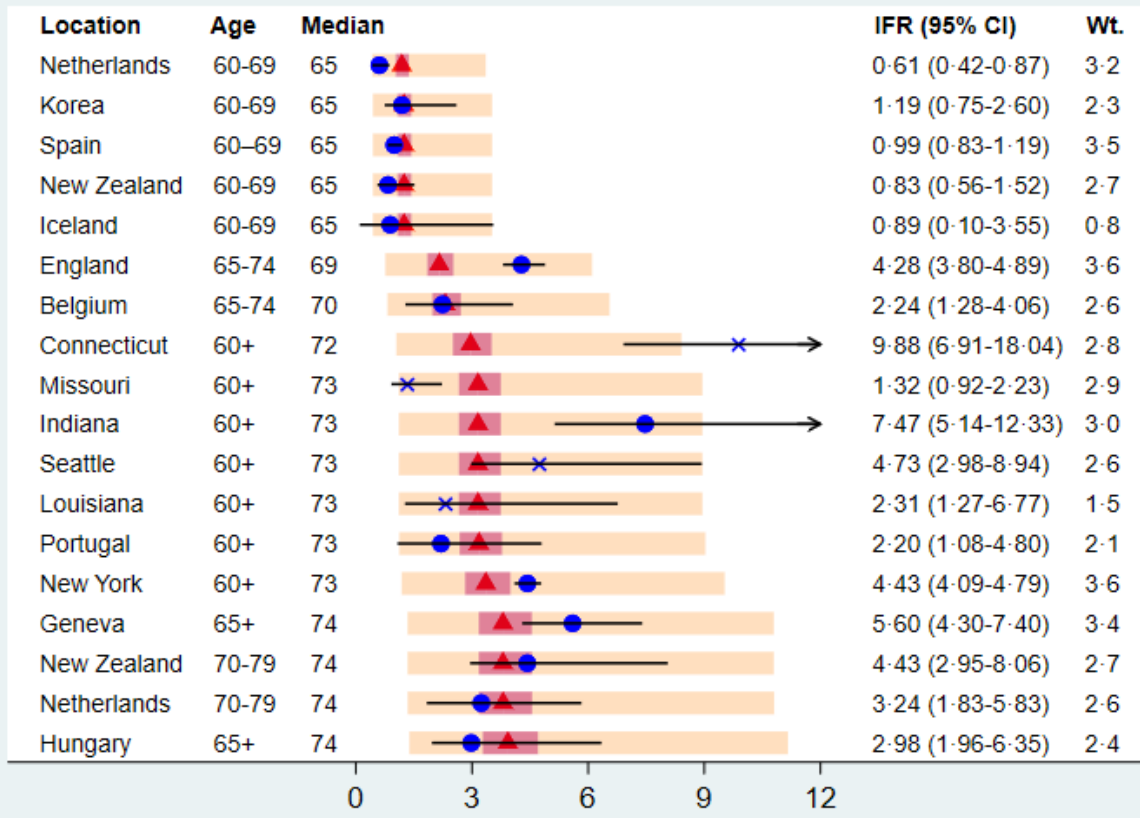


Cohorts with median age of 55-64 years



(Figure 6 continues on next page)

Cohorts with median age of 65-74 years



Cohorts with median age of 75 years and above

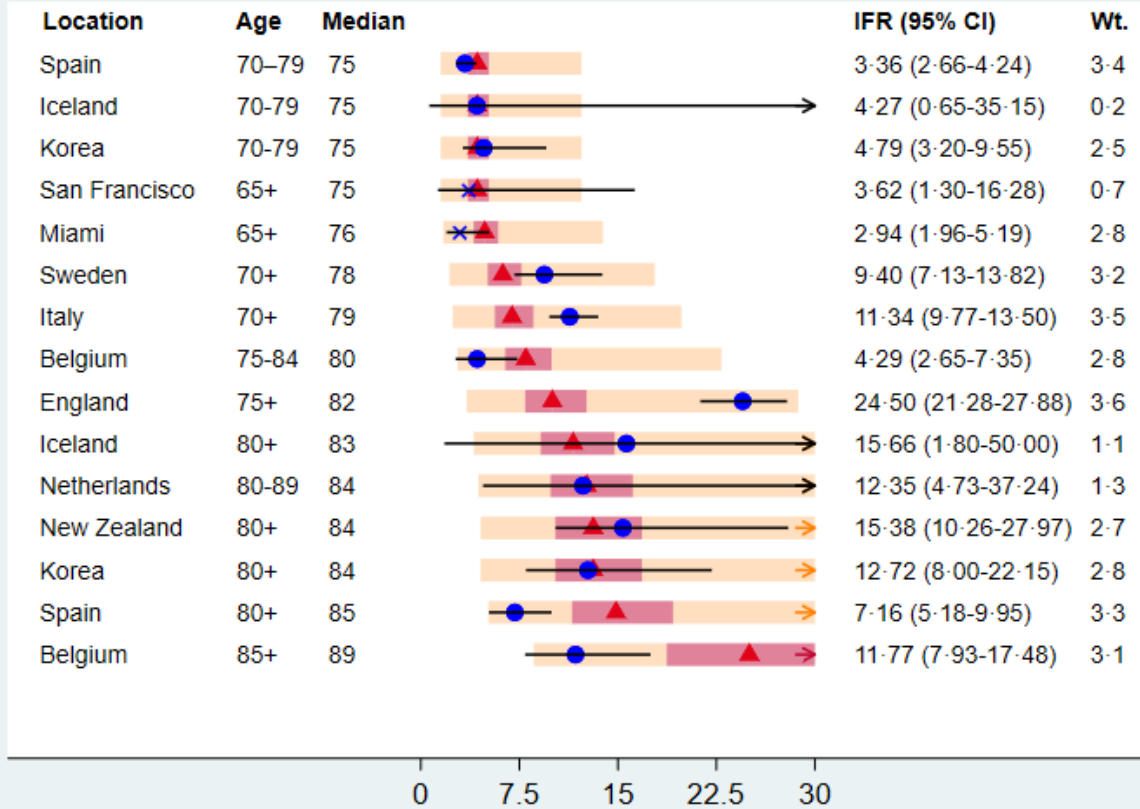


Figure 6: Forest plot of meta-regression data

Age Group	COVID-19 Infection Fatality Rate (%)	Automobile Accident Annualized Fatality Rate (%)	Other Accidental Injury Annualized Fatality Rate (%)
0 to 34	0.01	0.01	0.03
35 to 44	0.04	0.01	0.04
45 to 54	0.2	0.01	0.04
55 to 64	0.7	0.01	0.04
65 to 74	2.4	0.01	0.04
75 to 84	8.9	0.02	0.09
85+	36.8	0.02	0.35

Table 4: Age-specific fatality rates for COVID-19 vs. accidental injuries

Discussion

Our analysis indicates that COVID-19 poses a very low risk for children and younger adults but is hazardous for middle-aged adults and extremely dangerous for older adults. Table 4 contextualize these risks by comparing the age-specific IFRs from our meta-regression analysis to the annualized risk of a fatal auto accident or other accidental injury. For a young adult, the fatality risk of a SARS-CoV-2 infection is roughly comparable to the risks associated with engaging in other everyday activities. By contrast, an 60-year-old adult who gets infected faces a fatality risk more than 50 times higher than the annual fatality risk of driving an automobile.

Our analysis facilitates comparisons between the COVID-19 pandemic and the Spanish Flu pandemic of 1918-20. The U.S. CDC estimates that about 28% of the U.S. population was infected by the Spanish Flu and that the death toll was about 675,000. However, that disease was most dangerous for young adults, with an IFR of about 4% for people ages 20 to 40 years old but caused relatively few deaths among middle-aged and older adults—the age groups that are most vulnerable to COVID-19.

Our meta-regression analysis confirms that COVID-19 is far more deadly than seasonal flu. The U.S. CDC estimates that during winter 2018-19 influenza was associated with about 50 million infections and 34,000 fatalities, that is, an overall IFR of about 0.07%. By comparison, recent seroprevalence data from U.S. public health laboratories indicates that more than 25 million

Scenario	Infection Rate by Age (<i>percent</i>)				Deaths (<i>thousands</i>)	IFR (<i>percent</i>)
	All	0-49	50-64	65+		
Baseline	8.0	9.0	7.1	6.0	175,000	0.6
Scenario #1: <i>current pattern of age-specific prevalence</i>	20	23	16	14	375,000	0.6
Scenario #2: <i>uniform prevalence</i>	20	20	20	20	525,000	0.8
Scenario #3: <i>protection of vulnerable age groups</i>	20	26	10	6	235,000	0.3

Table 5: U.S. scenario analysis

people (that is, 8% of the U.S. population) had been infected with SARS-CoV-2 during the last ten days of July.⁸⁸ Cumulative U.S. fatalities were close to 170,000 as of August 14 (three weeks after the midpoint date of the seroprevalence data). These figures indicate that the population IFR of COVID-19 is currently about 0.6%, roughly ten times more deadly than seasonal flu.²³

Nonetheless, the current level of the overall U.S. IFR should *not* be interpreted as a fixed parameter. Rather, our meta-analysis clearly underscores the rationale for public health measures and communications aimed at reducing the aggregate IFR by mitigating the incidence of new COVID-19 infections among middle-aged and older adults.⁸⁹ To illustrate these considerations, Table 5 outlines three alternative scenarios for the U.S. trajectory of COVID-19 infections and fatalities. All three scenarios assume that the infection rate continues rising to a plateau of around 20% (similar to the prevalence observed in New York City as of late spring). However, the age-specific infection rates vary markedly across the three scenarios:

- Scenario #1 assumes that age-specific prevalence will remain similar to the average pattern that has prevailed to date, as indicated by seroprevalence data from U.S. public health laboratories.
- Scenario #2 assumes that the prevalence will eventually become uniform across all age groups, similar to the Spanish Flu pandemic and seasonal influenza.
- Scenario #3 assumes that public health measures and communications will restrain the incidence of new infections among middle-aged and older adults while prevalence continues rising more rapidly among children and younger adults.

To assess the implications of these three alternative assumptions, we use the age-specific IFRs from our meta-regression analysis to determine the death toll for each age group as follows:

$$Deaths_{age} = Population_{age} \times Infection\ Rate_{age} \times IFR_{age}$$

Scenario #1 shows that, if the current age-specific infection pattern continues until 20% of the U.S. is infected, deaths will increase by a factor of 2 to around 375,000. The outcome is far worse in Scenario #2, where the virus spreads uniformly across age groups and causes nearly 525,000 fatalities—nearly the same death toll as the Spanish Flu, though only one-third as large on a *per capita* basis. Finally, Scenario #3 is associated with a far lower proportion of older adults contracting the virus, and the total number of fatalities is held to about 235,000.

Of course, if COVID-19 were allowed to become even more prevalent among the elderly, as in some geographical locations, the United States could end up with an even higher population IFR. Conversely, policy measures and communications that protect vulnerable age groups could halve the overall IFR to around 0.3% and prevent about 150,000 U.S. deaths relative to the baseline in which the virus continues spreading with roughly the same age-specific prevalence that has been observed to date.

Directions for Further Research

While age and fatality risk are closely related, differences in the age structure of the population and age-specific infection rates surely cannot explain all deviations in IFR across regions and populations. Consequently, the role of co-morbidities and other demographic and socioeconomic factors merits further research that carefully distinguishes between infection risk and IFR.

A recent U.K. study has shown that COVID-19 mortality outcomes are strongly linked to comorbidities such as chronic pulmonary disease, diabetes, and obesity.⁹⁰ However, that study specifically warns against drawing causal conclusions from those findings, which may reflect a higher incidence of COVID-19 rather than a higher IFR for individuals with those comorbidities. Indeed, a separate study of hospitalized U.K. COVID-19 patients found that patient age was far more important than any specific comorbidity in determining mortality risk.⁹¹ For example, the COVID-19 fatality risk for an obese 40-year-old hospital patient was found to be moderately higher than for a non-obese individual of the same cohort but only one-tenth the fatality risk for a non-obese 75-year-old hospital patient.

The high prevalence of comorbidities among COVID-19 patients has been well documented but not compared systematically to the prevalence of such comorbidities in the general population. For example, one recent study of hospitalized COVID-19 patients in New York City (NYC) reported that 94% of those patients had at least one chronic health condition.⁹² Nevertheless, as discussed in Appendix E, that finding is not particularly surprising given the prevalence of comorbidities among middle-aged and elderly NYC residents. For example, nearly 30% of older NYC adults (ages 60+) are diabetic, while 23% have cardiovascular disease (including hypertension), and 8% have chronic pulmonary diseases—practically identical to the incidence of those comorbidities in the sample of hospitalized COVID-19 patients. Indeed, obesity was the *only* comorbidity that was much more prevalent among hospitalized COVID-19 patients than in the general population of older NYC adults. Nonetheless, obesity is also much more prevalent among lower-income groups who are more likely to live in high-density neighborhoods and

work in high-exposure jobs, and hence such data clearly cannot be used to distinguish prevalence vs. severity of COVID-19.

Our meta-analysis has not directly considered the extent to which IFRs may vary with other demographic factors, including race and ethnicity. Fortunately, valuable insights can be garnered from other recent studies. In particular, one recent seroprevalence study of residents of two urban locations in Louisiana found no significant difference in IFRs between whites and Blacks.⁹³

Nonetheless, the incidence of COVID-19 mortality among people of color is extraordinarily high due to markedly different infection rates that reflect systematic racial and ethnic disparities in housing and employment. For example, a recent infection study of a San Francisco neighborhood found that 80% of positive cases were Latinx – far higher than the proportion of Latinx residents in that neighborhood.⁴² That study concluded as follows: “*Risk factors for recent infection were Latinx ethnicity, inability to shelter-in-place and maintain income, frontline service work, unemployment, and household income less than \$50,000 per year.*” Other researchers have reached similar conclusions, attributing elevated infection rates among Blacks and Hispanics to dense housing of multi-generational families, increased employment in high-contact service jobs, high incidence of chronic health conditions, and lower quality of health care.⁹⁴

In summary, while the present study has investigated the effects of age on the IFR of COVID-19, further research needs to be done on how infection and fatality rates for this disease are affected by demographic and socioeconomic factors.

References

- 1 New York Department of Health. COVID-19 Tracker – Fatalities by Age Group. 2020.
- 2 New York City Department of Health. COVID-19 Data. 2020.
- 3 Meyerowitz-Katz G, Merone L. A systematic review and meta-analysis of published research data on COVID-19 infection-fatality rates. 2020.
- 4 United Kingdom Parliament Office. Antibody Tests for COVID-19. 2020.
- 5 Byambasuren O, Dobler CC, Bell K, et al. Estimating the seroprevalence of SARS-CoV-2 infections: systematic review. 2020.
- 6 Ioannidis J. The infection fatality rate of COVID-19 inferred from seroprevalence data. 2020.
- 7 Organization for Economic Cooperation and Development. Member Countries. 2020.
- 8 Larremore DB, Fosdick BK, Bubar KM, et al. Estimating SARS-CoV-2 seroprevalence and epidemiological parameters with uncertainty from serological surveys. 2020.
- 9 Manski CF, Molinari F. Estimating the COVID-19 infection rate: Anatomy of an inference problem. *J Econom* 2020.
- 10 Lisboa Bastos M, Tavaziva G, Abidi SK, et al. Diagnostic accuracy of serological tests for covid-19: systematic review and meta-analysis. *BMJ* 2020; **370**: m2516.
- 11 Brown TS, Walensky RP. Serosurveillance and the COVID-19 Epidemic in the US: Undetected, Uncertain, and Out of Control. *JAMA* 2020.
- 12 Havers FP, Reed C, Lim T, et al. Seroprevalence of Antibodies to SARS-CoV-2 in 10 Sites in the United States, March 23-May 12, 2020. *JAMA Intern Med* 2020.
- 13 Lattimore S, Wickenden C, Brailsford SR. Blood donors in England and North Wales: demography and patterns of donation. *Transfusion* 2015; **55**(1): 91-9.
- 14 Public Health England. Sero-Surveillance of COVID-19: Week 22. 2020.
- 15 United Kingdom Office for National Statistics. Coronavirus (COVID-19) Infection Survey Pilot. 2020.
- 16 Rosenberg ES, Tesoriero JM, Rosenthal EM, et al. Cumulative incidence and diagnosis of SARS-CoV-2 infection in New York. *annals of epidemiology* 2020.
- 17 Reifer J, Hayum N, Heszkel B, Klagsbald I, Strevva VA. SARS-CoV-2 IgG antibody responses in New York City. *diagnostic microbiology and infectious disease* 2020.
- 18 Snoeck CJ, Vaillant M, Abdelrahman T, et al. Prevalence of SARS-CoV-2 infection in the Luxembourgish population: the CON-VINCE study. 2020.
- 19 Byrne AW, McEvoy D, Collins AB, et al. Inferred duration of infectious period of SARS-CoV-2: rapid scoping review and analysis of available evidence for asymptomatic and symptomatic COVID-19 cases. *BMJ Open* 2020; **10**(8): e039856-e.
- 20 Khalili M, Karamouzian M, Nasiri N, Javadi S, Mirzazadeh A, Sharifi H. Epidemiological characteristics of COVID-19: a systematic review and meta-analysis. *Epidemiol Infect* 2020; **148**: e130.
- 21 Long QX, Liu BZ, Deng HJ, et al. Antibody responses to SARS-CoV-2 in patients with COVID-19. *Nat Med* 2020; **26**(6): 845-8.
- 22 Sethuraman N, Jeremiah SS, Ryo A. Interpreting Diagnostic Tests for SARS-CoV-2. *JAMA* 2020; **323**(22): 2249-51.
- 23 U.S. Center for Disease Control and Prevention. COVID-19 Pandemic Planning Scenarios. 2020.
- 24 Harbord RM, Higgins JPT. Meta-regression in Stata. *Stata Journal* 2008; **8**(4): 493-519.
- 25 Higgins JPT, Thompson SG, Spiegelhalter DJ. A re-evaluation of random-effects meta-analysis. *J R Stat Soc Ser A Stat Soc* 2009; **172**(1): 137-59.
- 26 Molenberghs G, Faes C, Aerts J, et al. Belgian Covid-19 Mortality, Excess Deaths, Number of Deaths per Million, and Infection Fatality Rates (8 March - 9 May 2020). 2020.
- 27 Ward H, Atchison C, Whitaker M, et al. Antibody prevalence for SARS-CoV-2 following the peak of the pandemic in England: REACT2 study in 100,000 adults. 2020.
- 28 Merkely B, Szabo AJ, Kosztin A, et al. Novel coronavirus epidemic in the Hungarian population, a cross-sectional nationwide survey to support the exit policy in Hungary. *Geroscience* 2020; **42**(4): 1063-74.

- 29 Gudbjartsson DF, Helgason A, Jonsson H, et al. Spread of SARS-CoV-2 in the Icelandic Population. *N Engl J Med* 2020; **382**(24): 2302-15.
- 30 Italy National Institute of Statistics. Primi risultati dell'indagine di sieroprevalenza sul SARS-CoV-2. 2020.
- 31 Netherlands National Institute for Public Health and the Environment. Children and COVID-19. 2020.
- 32 van Dissel J. COVID-19 technical briefing to Parliament. 2020.
- 33 Portugal National Institute of Health. Relatório de Apresentação dos Resultados Preliminares do Primeiro Inquérito Serológico Nacional COVID-19. 2020.
- 34 Pastor-Barriuso R, Perez-Gomez B, Hernan MA, et al. SARS-CoV-2 infection fatality risk in a nationwide seroepidemiological study. *medRxiv* 2020: 2020.08.06.20169722.
- 35 Sweden Public Health Authority. COVID-19 Report for Week 24 - COVID-19 veckorapport vecka 24. 2020.
- 36 Perez-Saez J, Lauer SA, Kaiser L, et al. Serology-informed estimates of SARS-CoV-2 infection fatality risk in Geneva, Switzerland. *The Lancet Infectious Diseases*.
- 37 Biggs HM. Estimated Community Seroprevalence of SARS-CoV-2 Antibodies — Two Georgia Counties, April 28–May 3, 2020. *morbidity and mortality weekly report* 2020; **69**(29): 965-70.
- 38 Menachemi N, Yiannoutsos CT, Dixon BE, et al. Population Point Prevalence of SARS-CoV-2 Infection Based on a Statewide Random Sample — Indiana, April 25–29, 2020. *morbidity and mortality weekly report* 2020; **69**(29): 960-4.
- 39 University of Utah Health. Utah HERO project announces phase one findings. 2020.
- 40 New Zealand Ministry of Health. COVID-19 Current Cases. 2020.
- 41 Korea Center for Disease Control. Weekly Report on the COVID-19 Situation in the Republic of Korea. 2020.
- 42 Chamie G, Marquez C, Crawford E, et al. SARS-CoV-2 Community Transmission During Shelter-in-Place in San Francisco. 2020.
- 43 Czech Ministry of Health. Collective Immunity Study SARS-CoV-2: Czech Prevalence. 2020.
- 44 Denmark State Blood Institute. Notat: Nye foreløbige resultater fra den repræsentative seroprævalensundersøgelse af COVID-19. 2020.
- 45 Dimeglio C, Loubes J-M, Miedougé M, Herin F, Soulat J-M, Izopet J. The real seroprevalence of SARS-CoV-2 in France and its consequences for virus dynamics. *Research Square*; 2020.
- 46 Feehan AK, Fort D, Garcia-Diaz J, et al. Point prevalence of SARS-CoV-2 and infection fatality rate in Orleans and Jefferson Parish, Louisiana, May 9-15, 2020. 2020.
- 47 Japan Ministry of Health Labour and Welfare. Updates on COVID-19 in Japan. 2020.
- 48 Jersey Health & Community Services. Prevalence of Antibodies – Community Survey Round 2. 2020.
- 49 Lavezzo E, Franchin E, Ciavarella C, et al. Suppression of COVID-19 outbreak in the municipality of Vo, Italy. 2020.
- 50 Mahajan S, Srinivasan R, Redlich CA, et al. Seroprevalence of SARS-CoV-2-Specific IgG Antibodies Among Adults Living in Connecticut Between March 1 and June 1, 2020: Post-Infection Prevalence (PIP) Study. *medRxiv* 2020: 2020.08.04.20168203.
- 51 McLaughlin CC, Doll MK, Morrison KT, et al. High Community SARS-CoV-2 Antibody Seroprevalence in a Ski Resort Community, Blaine County, Idaho, US. Preliminary Results. *medRxiv* 2020.
- 52 Nawa N, Kuramochi J, Sonoda S, et al. Seroprevalence of SARS-CoV-2 IgG Antibodies in Utsunomiya City, Greater Tokyo, after first pandemic in 2020 (U-CORONA): a household- and population-based study. 2020.
- 53 Nishiura H, Kobayashi T, Yang Y, et al. The Rate of Underascertainment of Novel Coronavirus (2019-nCoV) Infection: Estimation Using Japanese Passengers Data on Evacuation Flights. *J Clin Med* 2020; **9**(2).
- 54 Norrbotten Region. Forekomst av antikroppar mot covid-19 - Norrbottens befolkning maj 2020. 2020.
- 55 Norway Public Health Institute. Truleg berre ein liten andel av befolkninga som har vore smitta av koronavirus. 2020.
- 56 Oklahoma State Department of Health. Weekly Epidemiology and Surveillance Report. 2020.
- 57 Oregon State University. TRACE results suggest 17% of Hermiston community infected with SARS-CoV-2. 2020.

- 58 Petersen MS, Strøm M, Christiansen DH, et al. Seroprevalence of SARS-CoV-2–Specific Antibodies, Faroe Islands. *emerging infectious diseases* 2020; **26**(11).
- 59 Rhode Island Department of Health. COVID-19 serology testing brief. 2020.
- 60 Riverside County Joint Information Center. Antibody study shows coronavirus spread wider in Riverside County. 2020.
- 61 Saltzman J. Nearly a third of 200 blood samples taken in Chelsea show exposure to coronavirus. *Boston Globe*. 2020 4/17/2020.
- 62 San Miguel County Department of Health & Environment. IgG Antibody Tests: Statistics and Demographics. 2020.
- 63 Skowronski DM, Sekirov I, Sabaiduc S, et al. Low SARS-CoV-2 sero-prevalence based on anonymized residual sero-survey before and after first wave measures in British Columbia, Canada, March-May 2020. 2020.
- 64 Slovenia Government Communication Office. First study carried out on herd immunity of the population in the whole territory of Slovenia. 2020.
- 65 Stadlbauer D, Tan J, Jiang K, et al. Seroconversion of a city: Longitudinal monitoring of SARS-CoV-2 seroprevalence in New York City. *medRxiv* 2020: 2020.06.28.20142190.
- 66 Stockholm Region. Lägesrapport om arbetet med det nya coronaviruset. 2020.
- 67 Streeck H, Schulte B, Kuemmerer B, et al. Infection fatality rate of SARS-CoV-2 infection in a German community with a super-spreading event. 2020.
- 68 University of Miami. SPARK-C: understanding the burden of COVID-19 in Miami-Dade County through rapid serological testing of a representative random sample. 2020.
- 69 von Laer D. U.S. National Institutes of Health COVID-19 lecture: high seroprevalence, drastic decline of incidence, and low infection fatality rate of SARS-CoV-2 infections in children and adults in the ski resort Ischgl, Austria. 2020.
- 70 Washoe County Health District. Seroprevalence of SARS-CoV-2 Specific Antibodies Among Adults in Washoe County, Nevada on June 9-10, 2020. 2020.
- 71 Weis S, Scherag A, Baier M, et al. Seroprevalence of SARS-CoV-2 antibodies in an entirely PCR-sampled and quarantined community after a COVID-19 outbreak - the CoNAN study. 2020.
- 72 Wells PM, Doores KM, Couvreur S, et al. Estimates of the rate of infection and asymptomatic COVID-19 disease in a population sample from SE England. 2020.
- 73 Sweden Public Health Authority. The Infection Fatality Rate of COVID-19 in Stockholm – Technical Report. 2020.
- 74 Armann JP, Unrath M, Kirsten C, Lueck C, Dalpke A, Berner R. Anti-SARS-CoV-2 IgG antibodies in adolescent students and their teachers in Saxony, Germany (SchoolCoviDD19): very low seroprevalence and transmission rates. 2020.
- 75 Bendavid E, Mulaney B, Sood N, et al. COVID-19 Antibody Seroprevalence in Santa Clara County, California. 2020.
- 76 Bryan A, Pepper G, Wener MH, et al. Performance Characteristics of the Abbott Architect SARS-CoV-2 IgG Assay and Seroprevalence in Boise, Idaho. *J Clin Microbiol* 2020; **58**(8).
- 77 Erikstrup C, Hother CE, Pedersen OBV, et al. Estimation of SARS-CoV-2 infection fatality rate by real-time antibody screening of blood donors. *clinical infectious diseases* 2020.
- 78 Fiore J, Centra M, de Carlo A, et al. Far away from herd immunity to SARS-CoV-2: results from a survey in healthy blood donors in southeastern Italy. 2020.
- 79 Fischer B, Knabbe C, Vollmer T. SARS-CoV-2 IgG seroprevalence in blood donors located in three different federal states, Germany, March to June 2020. *Euro Surveill* 2020; **25**(28).
- 80 Fontanet A, Tondeur L, Madec Y, et al. Cluster of COVID-19 in northern France: A retrospective closed cohort study. *medRxiv* 2020: 2020.04.18.20071134.
- 81 Kraehling V, Kern M, Halwe S, et al. Epidemiological study to detect active SARS-CoV-2 infections and seropositive persons in a selected cohort of employees in the Frankfurt am Main metropolitan area. 2020.

- 82 Nesbitt DJ, Jin D, Hogan JW, et al. Low Seroprevalence of SARS-CoV-2 in Rhode Island Blood Donors Determined using Multiple Serological Assay Formats. 2020.
- 83 Ng D, Goldgof G, Shy B, et al. SARS-CoV-2 seroprevalence and neutralizing activity in donor and patient blood from the San Francisco Bay Area. *medRxiv* 2020.
- 84 Percivalle E, Cambie G, Cassaniti I, et al. Prevalence of SARS-CoV-2 specific neutralising antibodies in blood donors from the Lodi Red Zone in Lombardy, Italy, as at 06 April 2020. *Euro Surveill* 2020; **25**(24).
- 85 Slot E, Hogema BM, Reusken CBEM, et al. Herd immunity is not a realistic exit strategy during a COVID-19 outbreak. 2020.
- 86 Thompson CP, Grayson N, Paton R, et al. Detection of neutralising antibodies to SARS coronavirus 2 to determine population exposure in Scottish blood donors between March and May 2020. *medRxiv* 2020: 2020.04.13.20060467.
- 87 Valenti L, Bergna A, Pelusi S, et al. SARS-CoV-2 seroprevalence trends in healthy blood donors during the COVID-19 Milan outbreak. 2020.
- 88 U.S. Center for Disease Control and Prevention. COVIDView weekly report - U.S. virologic surveillance by public health laboratories. 2020.
- 89 Davies NG, Klepac P, Liu Y, et al. Age-dependent effects in the transmission and control of COVID-19 epidemics. *Nat Med* 2020.
- 90 Williamson EJ, Walker AJ, Bhaskaran K, et al. Factors associated with COVID-19-related death using OpenSAFELY. *Nature* 2020.
- 91 Docherty AB, Harrison EM, Green CA, et al. Features of 20 133 UK patients in hospital with covid-19 using the ISARIC WHO Clinical Characterisation Protocol: prospective observational cohort study. *BMJ* 2020; **369**: m1985.
- 92 Richardson S, Hirsch JS, Narasimhan M, et al. Presenting Characteristics, Comorbidities, and Outcomes Among 5700 Patients Hospitalized With COVID-19 in the New York City Area. *JAMA* 2020; **323**(20): 2052-9.
- 93 Feehan AK, Fort D, Garcia-Diaz J, et al. Seroprevalence of SARS-CoV-2 and Infection Fatality Ratio, Orleans and Jefferson Parishes, Louisiana, USA, May 2020. *Emerg Infect Dis* 2020; **26**(11).
- 94 Azar K, Shen Z, Romanelli R, et al. Disparities in outcomes among COVID-19 patients in a large health care system in California. *Health Affairs* 2020; **39**.