

Central Nervous System Manifestations in COVID-19 Patients: A Systematic Review and Meta-analysis

Running title: *A Meta-analysis of CNS manifestations in COVID-19*

Shahrzad Nazari^a, PhD; Amirhossein Azari Jafari^b, MD; Seyyedmohammadsadeq Mirmoeeni^b, MD; Saeid Sadeghian^c, MD; Mohammad Eghbal Heidari^d, BSN; Siavash Sadeghian^e, MD; Farhad Asarzadegan^f, MD; Seyed Mahmoud Puormand^g, MSc; Hamid Ebadi^h, MD; Davood Fathi^{i,j}, MD, PhD; Sahar Dalvand^{k*}, PhD.

^a Department of Neuroscience and Addiction Studies, School of Advanced Technologies in Medicine, Tehran University of Medical Sciences, Tehran, Iran.

^b Student Research Committee, School of Medicine, Shahroud University of Medical Sciences, Shahroud, Iran.

^c Department of Paediatric Neurology, Golestan Medical, Educational, and Research Centre, Ahvaz Jundishapur University of Medical Sciences, Ahvaz, Iran.

^d Students scientific research center, Tehran university medical science, Tehran, Iran.

^e Ahvaz Jundishapur University of Medical Sciences, Ahvaz, Iran.

^f Department of Neurology, Imam Hossein Medical and Educational Center, Shahid Beheshti University of Medical Sciences, Tehran, Iran.

^g Imam Hossein Hospital, Shahid Beheshti University of Medical Sciences, Tehran, Iran.

^h Department of Clinical Neurosciences, University of Calgary, Calgary, Alberta, Canada.

ⁱ Brain and Spinal Cord Injury Research Center, Neuroscience Institute, Tehran University of Medical Sciences, Tehran, Iran.

^j Department of Neurology, Shariati Hospital, Tehran University of Medical Sciences, Tehran, Iran.

^k Department of Epidemiology and Biostatistics, School of Public Health, Tehran University of Medical Sciences, Tehran, Iran.

***Correspondence:** Sahar Dalvand, Department of Epidemiology and Biostatistics, School of Public Health, Tehran University of Medical Sciences, Tehran, Iran. (Email: dalvand-s@razi.tums.ac.ir).

Address: Tehran University of Medical Sciences, Enqelab Square, Tehran, Iran. Tel: +989168683296 / Fax: 66027611.

Co-correspond: Davood Fathi, (Email: dr.davoodfathi@gmail.com).

Acknowledgments: Dr. Katayoun Alikhani for her supports and comments.

Abstract

Background At the end of December 2019, a novel respiratory infection, initially reported in China, known as COVID-19 initially reported in China, and later known as COVID-19, led to a global pandemic. Despite many studies reporting respiratory infections as the primary manifestations of this illness, an increasing number of investigations have focused on the central nervous system (CNS) manifestations in COVID-19. In this study, we aimed to evaluate the CNS presentations in COVID-19 patients in an attempt to identify the common CNS features and provide a better overview to tackle this new pandemic.

Methods In this systematic review and meta-analysis, we searched PubMed, Web of Science, Ovid, Embase, Scopus, and Google Scholar. Included studies were publications that reported the CNS features between January 1st, 2020, to April 20th, 2020. The data of selected studies were screened and extracted independently by four reviewers. Extracted data analyzed by using STATA statistical software. The study protocol registered with PROSPERO (CRD42020184456).

Results Of 2353 retrieved studies, we selected 64 studies with 11282 patients after screening. Most of the studies were conducted in China (58 studies). The most common CNS symptom of COVID-19 were Headache (8.69%, 95%CI: 6.76%-10.82%), Dizziness (5.94%, 95%CI: 3.66%-8.22%), and Impaired consciousness (1.9%, 95%CI: 1%-2.79%).

Conclusions The growing number of studies have reported COVID-19, CNS presentations as remarkable manifestations that happen. Hence, understanding the CNS characteristics of COVID-19 can help us for better diagnosis and ultimately prevention of worse outcomes.

Keywords: COVID-19, SARS-CoV-2, Central nervous system, CNS, Neurology, Headache, dizziness

1. Introduction

At the end of December 2019, a novel respiratory syndrome, currently known as COVID-19, was reported in Wuhan city, Hubei province, China, and the first sign of this 2019 novel coronavirus infection (2019-nCoV, COVID-19) was pneumonia [1-7]. This new infection rapidly spread worldwide, and an increasing number of infected cases and deaths have been reported globally [8, 9]. Hence, the COVID-19 outbreak was officially considered as a Public Health Emergency of International Concern (PHEIC) by the World Health Organization (WHO) Emergency Committee [10, 11]. Severe acute respiratory syndrome coronavirus 2 (SARS-CoV-2) is a zoonotic pathogen and can transmit from infected animals (such as bats and snakes) to humans eventually leading to epidemics and pandemics through human-to-human transmission [11, 12]. Most cases of COVID-19 have shown respiratory symptoms ranging from cough to dyspnea and respiratory failure as well as the typical signs and symptoms of infection such as fever and fatigue [7, 13-15].

However, a growing number of COVID-19 patients are presenting with different combinations of the central nervous system (CNS) manifestations [16-18]. Several case reports have indicated the presence of various CNS complications, including encephalitis, stroke, meningitis, and encephalopathy in COVID-19 patients [19-22]. Furthermore, a large observational study carried out by Mao et al. show the prevalence of the CNS presentations such as dizziness, headache, impaired consciousness, acute cerebrovascular disease, ataxia, and seizure [16]. Therefore, awareness of the different aspects of the short and long-term effects of this virus on the central nervous system could decently guide scientists. In this systematic review and meta-analysis, we assessed the CNS manifestations in COVID-19 cases.

2. Method

2-1. Search strategy and selection criteria

We performed this systematic review and meta-analysis based on Preferred Reporting Items for Systematic Reviews and Meta-Analyses (PRISMA) guidelines [23], and our study protocol is submitted to PROSPERO (ID: CRD42020184456). We systematically searched Six databases including Google Scholar, Scopus, PubMed, Web of science, Ovid, and Embase for all published articles from January 1st, 2020 until April 20th, 2020 using the following Medical Subject Heading terms (MESH terms):

("Wuhan coronavirus" OR "Wuhan seafood market pneumonia virus" OR "COVID19 virus" OR "COVID-19 virus" OR "coronavirus disease 2019 virus" OR "SARS-CoV-2" OR "SARS2" OR "2019-nCoV" OR "2019 novel coronavirus" OR "2019-nCoV infection" OR "2019 novel coronavirus disease" OR "2019-nCoV disease" OR "coronavirus disease-19" OR "coronavirus disease 2019" OR "2019 novel coronavirus infection" OR "COVID19" OR "COVID-19" OR "severe acute respiratory syndrome coronavirus 2" OR "coronavirus*") AND ("Manifestation, Neurologic" OR "Neurological Manifestations" OR "Neurologic Manifestation" OR "Neurological Manifestation" OR "Neurologic Symptom" OR "CNS" OR "brain" OR "neuro*" OR "headache" OR "dizziness" OR "ataxia" OR "epilepsy" OR "seizure" OR "migraine*" OR "CSF" OR "Cerebrospinal Fluids" OR "Fluid, Cerebrospinal" OR "Fluids, Cerebrospinal" OR "Cerebro Spinal Fluid" OR "Cerebro Spinal Fluids" OR "Fluid, Cerebro Spinal" OR "Fluids, Cerebro Spinal" OR "Spinal Fluid, Cerebro" OR "Spinal Fluids, Cerebro" OR "stroke" OR "vertigo" OR "consciousness" OR "Impaired consciousness" OR "coma" OR "cerebrovascular disease" OR "acute cerebrovascular disease" OR "encephalitis") alone or in combination with OR and AND operators.

After removing the duplicated records, articles were screened based on their titles and abstracts by two authors (S.S and M.H) independently. The full texts of eligible publications were examined for inclusion and exclusion criteria (A.AJ, S.M, S.S, and M.H). Observational studies reported at least one of the related CNS symptoms in COVID-19 patients without any language, race, country, and gender limitations included for quantitative synthesis. The preprint studies, interventional studies, systematic reviews, case reports, conferences, commentaries, letters, editorial, author responses, correspondence articles, in vitro, animal studies, children population, articles without full text, or unreliable data were excluded. In addition, the reference list of the eligible studies was searched to prevent missing publication and include all related literature. The data were independently extracted (A.AJ, S.M, S.S, S.S, and M.H), and discrepancies were resolved with discussion and consensus by three independent researchers (SH.N, S.D, and F.A).

2-2. Data analysis and quality assessment

The desired data was recorded using an excel spreadsheet form that included the title, first author, year and month of publication, type of study, country, total sample size, the sample size of male and female, study design, demographic characteristics, exposure history, clinical manifestation, CNS symptoms, and any reported comorbidity.

We assessed the quality of included studies (A.AJ, S.M, S.S, S.S, and M.H), based on the NIH quality assessment tool for observational cohort and case series studies [24]. This instrument assessed the quality of included studies based on the research question, study population, the participation rate of eligible persons, inclusion and exclusion criteria, sample size justification, analyses, reasonable timeframe, exposure, outcome measures, outcome assessors and, loss to follow-up.

2-3. Meta-analysis

Data from included studies were extracted for the number of events and total patients to perform a meta-analysis. Cochrane's Q test and the I^2 index were used to assess heterogeneity among selected studies. Heterogeneity was categorized as low (below 25%), moderate (25%–75%), and high (above 75%) [25]. Also, data adjusted by Freeman-Tukey double arcsine transformation and their 95% CIs were calculated by the Clopper-Pearson method [26]. We calculate mean and standard deviations from median and quartiles by using Wan method [27]. For continuous data, we estimate pooled results of means and their respective 95% CI by the inverse variance method. All analysis were performed using STATA statistical software, version 13 (StataCorp).

3. Results

As illustrated in (Figure 1), a total of 2353 studies were retrieved after a systematic search in the aforementioned databases. After removing duplicates, 1760 studies remained. Then, we narrowed the studies to 203 articles by screening with titles and abstracts. In full-text screening, 45 studies with no reliable or useful data, 24 review articles, 41 preprints, 6 case reports, 1 case controls, 4 reports, 4 papers with specific children population, one study with specific pregnant population, and 13 publications such as Commentary, editorial or Correspondence letters were excluded. Finally, 64 studies [5-7, 15, 16, 28-86] including 11282 COVID-19 patients, met our inclusion criteria, and were entered in meta-analysis. The main characteristics of our included studies are presented in (Table 1).

(Figure 1)

(Table 1)

The total sample size of eligible studies was 11687, including 5568 females and 6114 males. The mean age for non-critical patients was 48.557 (95% CI: 44.816%-52.299%) and for critical patients was 58.965 (95% CI: 55.792%-62.139%). As shown in (Table 2), the proportion of

patients with travel history to Wuhan, Wuhan related exposure, and Living in Wuhan was 30.43%, 3.83%, and 4.74%, respectively. In addition, the proportion of patients with travel history to other infected areas and contact with patients was 1.17% and 13.33%, respectively. Mortality was assessed in 25 studies with a pooled incidence rate of 10.47%. The incidence rate of positive females and males were 46.4% (95% CI: 43%-49.8%) and 49.5% (95% CI: 45.7%-53.3%), respectively. 36.1% (95% CI: 27.9%-44.8%) of infected patients were in the severe, critical, or Intensive care unit condition. In addition, the incidence rate of mortality and survival were 10.47% (95% CI: 5%-17.3%) and 81.43% (95% CI: 65.7%-93.2%), respectively.

(Table 2)

Based on the results shown in (Table 3 and Figure 2), the most common manifestations were, fever 79.39% (95% CI: 73.94%-84.37%), cough 54.77% (95%CI: 49.10%-60.38%), fatigue 31.13% (95% CI: 25.33%-37.23%), dyspnea 28.47% (95% CI: 21.49%-35.99%), Chest tightness 23.83% (95% CI: 17.84%-29.82%), and shortness of breath 20.42% (95% CI: 13.28%-28.85%). The highest incidence rate among CNS symptoms of COVID-19 patients was for headache (8.69% with 95% CI: 6.76%-10.82%), followed by Dizziness (5.94%, 95%CI: 3.66%-8.22%), and Impaired consciousness (1.9% with 95% CI: 1%-2.79%).

(Table 3)

(Figure 2)

(Table 4) shows comorbidities that were reported in 60 studies including 6959 patients. The highest incidence rate in comorbidities were hypertension with 23.54% (95% CI: 19.14%–27.94%), diabetes mellitus (11.68% with 95% CI, 0.98%–13.57%), cardiovascular disease (11.66% with 95% CI: 0.89%–14.35%), and cerebrovascular diseases (3.47% with 95% CI: 2.29%-4.85%).

(Table 4)

4. Discussion

Recently, the world has encountered an emergent outbreak posed by the novel coronavirus 2019, officially known as COVID-19 [87]. This infection has become a global threat, endangering millions of lives worldwide [87]. Hence, many experts, researchers, scientists and clinicians are attempting to investigate various aspects of this new infection to find useful solutions for coping with COVID-19 [87]. One of the various aspects of COVID-19 is its impact on the CNS, as

reported in a growing number of studies [87]. In addition to the common symptoms in COVID-19, several CNS symptoms such as headache and impaired consciousness have been observed in infected patients [16].

While most investigated the respiratory symptoms of COVID-19, Mao et al. specifically examined the prevalence of neurological manifestations ranging from CNS to peripheral nervous system (PNS) and neuromuscular symptoms in an observational study on COVID-19 patients [16]. They demonstrated CNS presentations ranging from dizziness and headache to impaired consciousness, acute cerebrovascular disease, ataxia, and seizure [16]. Based on the possible neuroinvasive potential of COVID-19, in this systematic review and meta-analysis, we analyzed those evidence indicating the involvement of CNS. We assessed 11687 COVID-19 adult patients from six countries. We reported that COVID-19 patients commonly showed CNS symptoms, including headache, dizziness, and impaired consciousness. Headache (8.69%) were the most common CNS symptoms, followed by dizziness (5.94%) and impaired consciousness (1.9%).

There are two main routes of CNS entry of COVID-19 (hematogenous and peripheral nerves route) leading to CNS infection and inducing various symptoms such as meningitis and encephalitis. In the hematogenous route, the virus infecting respiratory tracts can reach the CNS through the bloodstream via overcoming a strict obstacle known as the blood-brain barrier (BBB) [18, 88-93]. They also may enter the CNS through circumventricular organs, those CNS organs lacking the BBB [94]. The second route, a peripheral nerve, can provide the virus with a retrograde route in to access the CNS via an axonal transport machinery [18, 88-93]. In accordance with this finding, some previous studies on other types of coronaviruses indicating that coronaviruses can reach the brain via cranial nerves (e.g., olfactory, trigeminal nerve terminals in the nasal cavity) [88, 95-97]. Such a neuroinvasive propensity is supported by reporting of patients exhibiting smell impairment, as a hallmark of COVID-19 infection due to the involvement of the olfactory nerve [16, 87].

The COVID-19 infection mechanism requires the virus attaching to its receptor called angiotensin-converting enzyme 2 (ACE2) expressed in various tissues ranging from endothelial cells of the cardiovascular system, airway epithelia, kidney cells, small intestine, and lung parenchyma [98-100]. There exists a wealth of evidence that supports the expression and distribution of the ACE2 in the CNS [100-106]. Hence, ACE2 may be a potential target of COVID-19 upon the entrance into the CNS, triggering its effects on CNS tissue [92]. The

presence of the virus in the central nervous system is also supported by some evidence reporting COVID-19 in the CSF of the infected cases [19, 21].

In our meta-analysis, the mortality rate of COVID-19 cases with at least one CNS symptom was 10.47%, which is much higher than the mortality rate of the general infected population [107]. Such a mortality rate can indicate the importance of careful monitoring of CNS manifestations in COVID-19 patients. Moreover, in Mao's study, the prevalence of CNS manifestations were higher in severe cases of the illness associated with higher mortality [16]. Although, this can be due to the effect of COVID-19 on the brain stem and suppression of the cardiorespiratory control centers causing respiratory failure and death [108], other possible reasons such as cytokine storm and hypoxia have been suggested to explain the high mortality rate in cases with CNS manifestations. Cytokine storm as an immune system response during COVID-19 infection could enhance the permeability of the blood brain-barrier (BBB) [109, 110]. Infection of airway tissues by COVID-19 in severe infection leads to impaired gas exchange, subsequently causing CNS hypoxia resulting in neural dysfunction [111]. This hypoxic condition associated with severe infection disrupts the BBB through elevation of some factors like nitric oxide (NO) and inflammatory cytokines [112]. More precisely, all of these factors mentioned above may contribute to making the BBB more permeable to the virus. Therefore, in the severe condition of infection, COVID-19 easily enters the CNS via disrupted BBB and puts the brain at risk leading to the manifestation of CNS features [113-116].

Furthermore, recent studies have shown that COVID-19 can accelerate the formation of the blood clot in the blood vessels, increasing the risk of cerebrovascular diseases in COVID-19 patients [117, 118]. Hence, because the brain is nourished by a network of blood vessels, this could be indicative of the importance of cerebral vasculature investigations on the CNS symptoms in the COVID-19 infection.

In a nutshell, attention to the CNS aspects of COVID-19 infection has outstanding benefits for clinician's understanding of a very serious complication of this infection. At this point in time, researchers have mainly focused on finding medicinal treatments for respiratory symptoms of COVID-19. However, it is necessary to investigate the various CNS manifestations of COVID-19 since they are associated with increased severity and mortality [16]. Not only respiratory system dysfunction, but also impairment of respiratory control centers in the CNS (brain stem) can induce acute respiratory failure [108, 119]. Therefore, considering all effective factors, it can provide clinicians to choose the best way in an attempt to manage this pandemic more efficiently.

5. Limitations

There are several limitations in our systematic review and meta-analysis. Since in this ongoing pandemic, most of the investigations have conducted on typical signs and symptoms of COVID-19. Thus the number of studies on the atypical complications of COVID-19, such as CNS presentations are partially low. Moreover, there exist many COVID-19 preprint papers that have not yet undergone peer review. Additionally, five studies included in our meta-analysis reported headache and/or dizziness as one symptom in COVID-19 cases. Because we were not sure that headache and/or dizziness is resulted from headache or is a consequence of the dizziness, it would be challenging to categorize headache and/or dizziness in the subgroup of dizziness or headache. Hence, in our meta-analysis, it was not reported as a CNS manifestation and are implied as a separate symptom (table 3).

6. Conclusion

COVID-19 is a global problem that currently affects millions of people. This highly pathogenic virus can affect various parts of the human body. Although the respiratory tract has been mainly targeted by COVID-19, the central nervous system can be affected significantly. In addition, patients with more severe illness showed more CNS symptoms, which may bring on worsen clinical conditions. This study achieved an important estimation for the incidence of neurological manifestations in patients with COVID-19. The results of our survey may be helpful for clinicians for better diagnosis and management of CNS signs and symptoms in patients with COVID-19.

Funding: The author(s) received no financial support for the research, authorship, and/or publication of this article.

Author Contributors: Study conception and design: SH.N, SD; Acquisition of data: A.AJ. S.M, S.S, S.S, and M.H; Analysis and interpretation of data: SD; Drafting of manuscript: SH.N, SD, A.AJ. S.M, S.S and SM.P; Critical revision: SH.N, SD, A.AJ, F.A, H,E and D.F.

Disclosure of conflict of interest: None.

References

1. Wang, L., et al., *Review of the 2019 novel coronavirus (SARS-CoV-2) based on current evidence*. International Journal of Antimicrobial Agents, 2020: p. 105948.
2. Velavan, T.P. and C.G. Meyer, *The COVID-19 epidemic*. Tropical medicine & international health : TM & IH, 2020. 25(3): p. 278-280.
3. Adhikari, S.P., et al., *Epidemiology, causes, clinical manifestation and diagnosis, prevention and control of coronavirus disease (COVID-19) during the early outbreak period: a scoping review*. Infect Dis Poverty, 2020. 9(1): p. 29.
4. Organization, W.H., *Coronavirus disease 2019 (COVID-19): situation report, 72*. 2020.
5. Wu, C., et al., *Risk Factors Associated With Acute Respiratory Distress Syndrome and Death in Patients With Coronavirus Disease 2019 Pneumonia in Wuhan, China*. JAMA Intern Med, 2020.
6. Shi, S., et al., *Association of Cardiac Injury with Mortality in Hospitalized Patients with COVID-19 in Wuhan, China*. JAMA Cardiology, 2020.
7. Wang, D., et al., *Clinical characteristics of 138 hospitalized patients with 2019 novel coronavirus-infected pneumonia in Wuhan, China*. 2020. 323(11): p. 1061-1069.
8. Jiang, F., et al., *Review of the Clinical Characteristics of Coronavirus Disease 2019 (COVID-19)*. Journal of General Internal Medicine, 2020. 35(5): p. 1545-1549.
9. Sohrabi, C., et al., *World Health Organization declares global emergency: A review of the 2019 novel coronavirus (COVID-19)*. International Journal of Surgery, 2020. 76: p. 71-76.
10. WHO. *WHO COVID19 Pandemic 2020*; Available from: <https://www.who.int/dg/speeches/detail/who-director-general-s-opening-remarks-at-the-media-briefing-on-covid-19---11-march-2020>.
11. Mackenzie, J.S. and D.W. Smith, *COVID-19: a novel zoonotic disease caused by a coronavirus from China: what we know and what we don't*. Microbiology Australia, 2020: p. MA20013-MA20013.
12. Hassan, S.A., et al., *Coronavirus (COVID-19): A Review of Clinical Features, Diagnosis, and Treatment*. Cureus, 2020. 12(3): p. e7355-e7355.
13. Cascella, M., et al., *Features, evaluation and treatment coronavirus (COVID-19)*, in *Statpearls [internet]*. 2020, StatPearls Publishing.
14. Young, B.E., et al., *Epidemiologic features and clinical course of patients infected with SARS-CoV-2 in Singapore*. Jama, 2020. 323(15): p. 1488-1494.
15. Chen, N., et al., *Epidemiological and clinical characteristics of 99 cases of 2019 novel coronavirus pneumonia in Wuhan, China: a descriptive study*. The Lancet, 2020. 395(10223): p. 507-513.
16. Mao, L., et al., *Neurologic Manifestations of Hospitalized Patients With Coronavirus Disease 2019 in Wuhan, China*. JAMA Neurol, 2020.
17. Montalvan, V., et al., *Neurological manifestations of COVID-19 and other coronavirus infections: A systematic review*. Clin Neurol Neurosurg, 2020. 194: p. 105921.
18. Asadi-Pooya, A.A. and L. Simani, *Central nervous system manifestations of COVID-19: A systematic review*. J Neurol Sci, 2020. 413: p. 116832.
19. Zhou, L., et al., *Sars-Cov-2: Underestimated damage to nervous system*. Travel Medicine and Infectious Disease, 2020: p. 101642.
20. Filatov, A., et al., *Neurological Complications of Coronavirus Disease (COVID-19): Encephalopathy*. Cureus, 2020. 12(3): p. e7352-e7352.
21. Moriguchi, T., et al., *A first case of meningitis/encephalitis associated with SARS-Coronavirus-2*. International journal of infectious diseases : IJID : official publication of the International Society for Infectious Diseases, 2020. 94: p. 55-58.
22. Co, C.O.C., et al., *Intravenous Thrombolysis for Stroke in a COVID-19 Positive Filipino Patient, a Case Report*. Journal of clinical neuroscience : official journal of the Neurosurgical Society of Australasia, 2020: p. S0967-5868(20)30727-X.
23. Moher, D., et al., *Preferred reporting items for systematic reviews and meta-analyses: the PRISMA statement*. PLoS Med, 2009. 6(7): p. e1000097.

24. NIH. *Quality Assessment Tool for Observational Studies*. Available from: <https://www.nhlbi.nih.gov/health-topics/study-quality-assessment-tools>.
25. Higgins, J. and S. Thompson, *Quantifying heterogeneity in a meta-analysis* *Stat Med* 21 (11): 1539–1558. Find this article online, 2002.
26. Clopper, C.J. and E.S. Pearson, *The use of confidence or fiducial limits illustrated in the case of the binomial*. *Biometrika*, 1934. 26(4): p. 404-413.
27. Wan, X., et al., *Estimating the sample mean and standard deviation from the sample size, median, range and/or interquartile range*. *BMC medical research methodology*, 2014. 14(1): p. 135.
28. Yang, X., et al., *Clinical course and outcomes of critically ill patients with SARS-CoV-2 pneumonia in Wuhan, China: a single-centered, retrospective, observational study*. 2020.
29. Yang, W., et al., *Clinical characteristics and imaging manifestations of the 2019 novel coronavirus disease (COVID-19): A multi-center study in Wenzhou city, Zhejiang, China*. 2020.
30. Song, F., et al., *Emerging 2019 novel coronavirus (2019-NCoV) pneumonia*. *Radiology*, 2020. 295(1): p. 210-217.
31. Shi, H., et al., *Radiological findings from 81 patients with COVID-19 pneumonia in Wuhan, China: a descriptive study*. 2020.
32. Qian, G.-Q., et al., *Epidemiologic and Clinical Characteristics of 91 Hospitalized Patients with COVID-19 in Zhejiang, China: A retrospective, multi-centre case series*. 2020.
33. Liu, Y., et al., *Clinical and biochemical indexes from 2019-nCoV infected patients linked to viral loads and lung injury*. 2020. 63(3): p. 364-374.
34. Liu, K., et al., *Clinical characteristics of novel coronavirus cases in tertiary hospitals in Hubei Province*. 2020.
35. Li, Y., et al., *Comparison of the clinical characteristics between RNA positive and negative patients clinically diagnosed with 2019 novel coronavirus pneumonia*. 2020. 43: p. E023-E023.
36. Du, Y., et al., *Clinical features of 85 fatal cases of COVID-19 from Wuhan: A retrospective observational study*. 2020(ja).
37. Cheng, J., et al., *Epidemiological characteristics of novel coronavirus pneumonia in Henan*. 2020. 43: p. E027-E027.
38. Zhu, W., et al., *Initial clinical features of suspected Coronavirus Disease 2019 in two emergency departments outside of Hubei, China*. 2020.
39. Zhong, Q., et al., *Spinal anaesthesia for patients with coronavirus disease 2019 and possible transmission rates in anaesthetists: retrospective, single-centre, observational cohort study*. 2020.
40. Zheng, Y., et al., *Epidemiological characteristics and clinical features of 32 critical and 67 noncritical cases of COVID-19 in Chengdu*. *J Clin Virol*, 2020. 127: p. 104366.
41. Zheng, F., et al., *Clinical characteristics of 161 cases of corona virus disease 2019 (COVID-19) in Changsha*. 2020. 24(6): p. 3404-3410.
42. Zhao, W., et al., *CT scans of patients with 2019 novel coronavirus (COVID-19) pneumonia*. 2020. 10(10): p. 4606.
43. Zhang, X., et al., *Epidemiological, clinical characteristics of cases of SARS-CoV-2 infection with abnormal imaging findings*. *Int J Infect Dis*, 2020.
44. Zhang, J., et al., *Risk factors for disease severity, unimprovement, and mortality of COVID-19 patients in Wuhan, China*. *Clin Microbiol Infect*, 2020.
45. Yu, F., et al., *Quantitative Detection and Viral Load Analysis of SARS-CoV-2 in Infected Patients*. 2020.
46. Xu, Y.H., et al., *Clinical and computed tomographic imaging features of novel coronavirus pneumonia caused by SARS-CoV-2*. *Journal of Infection*, 2020. 80(4): p. 394-400.
47. Wu, J., et al., *Chest CT Findings in Patients With Coronavirus Disease 2019 and Its Relationship With Clinical Features*. 2020. 55(5): p. 257-261.
48. Wang, X., et al., *Clinical characteristics of non-critically ill patients with novel coronavirus infection (COVID-19) in a Fangcang Hospital*. 2020.
49. Wang, L., et al., *Coronavirus Disease 2019 in elderly patients: characteristics and prognostic factors based on 4-week follow-up*. 2020.
50. Wan, S., et al., *Relationships among Lymphocyte Subsets, Cytokines, and the Pulmonary Inflammation Index in Coronavirus (COVID-19) Infected Patients*. *Br J Haematol*, 2020.

51. Wan, S., et al., *Clinical Features and Treatment of COVID-19 Patients in Northeast Chongqing*. 2020.
52. Tian, S.J., et al., *Characteristics of COVID-19 infection in Beijing*. *Journal of Infection*, 2020. 80(4): p. 401-406.
53. Tan, C., et al., *C-reactive protein correlates with CT findings and predicts severe COVID-19 early*. 2020.
54. Sun, C., et al., *[Clinical analysis of 150 cases of 2019 novel coronavirus infection in Nanyang City, Henan Province]*. *Zhonghua Jie He He Hu Xi Za Zhi*, 2020. 43(0): p. E042.
55. Shao, F., et al., *In-hospital cardiac arrest outcomes among patients with COVID-19 pneumonia in Wuhan, China*. *Resuscitation*, 2020.
56. Qin, C., et al., *Dysregulation of immune response in patients with COVID-19 in Wuhan, China*. *Clin Infect Dis*, 2020.
57. Peng, Y.D., et al., *Clinical characteristics and outcomes of 112 cardiovascular disease patients infected by 2019-nCoV*. *Zhonghua xin xue guan bing za zhi*, 2020. 48: p. E004.
58. Peng, L., et al., *Improved Early Recognition of Coronavirus Disease-2019 (COVID-19): Single-Center Data from a Shanghai Screening Hospital*. *Arch Iran Med*, 2020. 23(4): p. 272-276.
59. Moein, S.T., et al. *Smell dysfunction: a biomarker for COVID-19*. in *International Forum of Allergy & Rhinology*. 2020. Wiley Online Library.
60. Mo, P., et al., *Clinical characteristics of refractory COVID-19 pneumonia in Wuhan, China*. 2020.
61. Mi, B., et al., *Characteristics and Early Prognosis of COVID-19 Infection in Fracture Patients*. 2020.
62. Lo, I.L., et al., *Evaluation of SARS-CoV-2 RNA shedding in clinical specimens and clinical characteristics of 10 patients with COVID-19 in Macau*. 2020. 16(10): p. 1698.
63. Liu, M., et al., *[Clinical characteristics of 30 medical workers infected with new coronavirus pneumonia]*. [Chinese]. *Chung Hua Chieh Ho Ho Hu Hsi Tsa Chih Chinese Journal of Tuberculosis & Respiratory Diseases*, 2020. 43(0): p. 17.
64. Ling, L., et al., *Critically ill patients with COVID-19 in Hong Kong: a multicentre retrospective observational cohort study*. 2020.
65. Liang, T., et al., *Evolution of CT findings in patients with mild COVID-19 pneumonia*. 2020: p. 1.
66. Lei, S., et al., *Clinical characteristics and outcomes of patients undergoing surgeries during the incubation period of COVID-19 infection*. 2020: p. 100331.
67. Lei, P., et al., *Clinical and computed tomographic (CT) images characteristics in the patients with COVID-19 infection: What should radiologists need to know?* 2020(Preprint): p. 1-13.
68. Kong, I., et al., *Early epidemiological and clinical characteristics of 28 cases of coronavirus disease in South Korea*. *Osong Public Health and Research Perspectives*, 2020(1): p. 8-14.
69. Kim, E.S., et al., *Clinical Course and Outcomes of Patients with Severe Acute Respiratory Syndrome Coronavirus 2 Infection: a Preliminary Report of the First 28 Patients from the Korean Cohort Study on COVID-19*. 2020. 35(13).
70. Jin, X., et al., *Epidemiological, clinical and virological characteristics of 74 cases of coronavirus-infected disease 2019 (COVID-19) with gastrointestinal symptoms*. *Gut*, 2020.
71. Jia, J., et al., *Epidemiological characteristics on the clustering nature of COVID-19 in Qingdao City, 2020: a descriptive analysis*. 2020: p. 1-17.
72. Huang, C.L., et al., *Clinical features of patients infected with 2019 novel coronavirus in Wuhan, China*. *Lancet*, 2020. 395(10223): p. 497-506.
73. Hsih, W.-H., et al., *Featuring COVID-19 cases via screening symptomatic patients with epidemiologic link during flu season in a medical center of central Taiwan*. 2020.
74. Han, R., et al., *Early clinical and CT manifestations of coronavirus disease 2019 (COVID-19) pneumonia*. 2020: p. 1-6.
75. Gupta, N., et al., *Clinical and epidemiologic profile of the initial COVID-19 patients at a tertiary care centre in India*. 2020. 90(1).
76. Guo, W., et al., *Diabetes is a risk factor for the progression and prognosis of COVID-19*. *Diabetes/Metabolism Research and Reviews*, 2020.
77. Guan, W.-j., et al., *Clinical characteristics of 2019 novel coronavirus infection in China*. 2020.

78. Feng, Y., et al., *COVID-19 with Different Severity: A Multi-center Study of Clinical Features*. American Journal of Respiratory & Critical Care Medicine, 2020. 10: p. 10.
79. Du, R.-H., et al., *Hospitalization and Critical Care of 109 Decedents with COVID-19 Pneumonia in Wuhan, China*. 2020(ja).
80. Ding, Q., et al., *The clinical characteristics of pneumonia patients co-infected with 2019 novel coronavirus and influenza virus in Wuhan, China*. 2020.
81. Chen, Y., et al., *The Presence of SARS-CoV-2 RNA in Feces of COVID-19 Patients*. 2020.
82. Chen, X., et al., *Differences between COVID-19 and suspected then confirmed SARS-CoV-2-negative pneumonia: a retrospective study from a single center*. 2020.
83. Chen, T., et al., *Clinical characteristics of 113 deceased patients with coronavirus disease 2019: retrospective study*. Bmj-British Medical Journal, 2020. 368.
84. Chen, J., et al., *Clinical progression of patients with COVID-19 in Shanghai, China*. 2020.
85. Chen, C., et al., *Analysis of myocardial injury in patients with COVID-19 and association between concomitant cardiovascular diseases and severity of COVID-19*. Zhonghua xin xue guan bing za zhi, 2020. 48: p. E008.
86. Barrasa, H., et al., *SARS-Cov-2 in Spanish Intensive Care: Early Experience with 15-day Survival In Vitoria*. 2020.
87. Baig, A.M., *Neurological manifestations in COVID-19 caused by SARS-CoV-2*. CNS neuroscience & therapeutics, 2020. 26(5): p. 499-501.
88. Desforges, M., et al., *Human Coronaviruses and Other Respiratory Viruses: Underestimated Opportunistic Pathogens of the Central Nervous System?* Viruses, 2020. 12(1): p. 14.
89. Swanson II, P.A. and D.B. McGavern, *Viral diseases of the central nervous system*. Current opinion in virology, 2015. 11: p. 44-54.
90. Desforges, M., et al., *Human coronaviruses: viral and cellular factors involved in neuroinvasiveness and neuropathogenesis*. Virus research, 2014. 194: p. 145-158.
91. Sepehrinezhad, A., A. Shahbazi, and S.S. Negah, *COVID-19 virus may have neuroinvasive potential and cause neurological complications: a perspective review*. Journal of NeuroVirology, 2020.
92. Baig, A.M., et al., *Evidence of the COVID-19 virus targeting the CNS: tissue distribution, host-virus interaction, and proposed neurotropic mechanisms*. ACS chemical neuroscience, 2020. 11(7): p. 995-998.
93. Román, G.C., et al., *The neurology of COVID-19 revisited: A proposal from the Environmental Neurology Specialty Group of the World Federation of Neurology to implement international neurological registries*. Journal of the Neurological Sciences, 2020. 414: p. 116884.
94. Chigr, F., M. Merzouki, and M. Najimi, *Comment on "The neuroinvasive potential of SARS-CoV-2 may play a role in the respiratory failure of COVID-19 patients"*. J Med Virol, 2020. 92(7): p. 703-704.
95. Natoli, S., et al., *Does SARS-CoV-2 invade the brain? Translational lessons from animal models*. European journal of neurology, 2020.
96. Li, K., et al., *Middle East Respiratory Syndrome Coronavirus Causes Multiple Organ Damage and Lethal Disease in Mice Transgenic for Human Dipeptidyl Peptidase 4*. The Journal of infectious diseases, 2016. 213(5): p. 712-722.
97. Netland, J., et al., *Severe acute respiratory syndrome coronavirus infection causes neuronal death in the absence of encephalitis in mice transgenic for human ACE2*. Journal of virology, 2008. 82(15): p. 7264-7275.
98. Fang, L., G. Karakiulakis, and M. Roth, *Are patients with hypertension and diabetes mellitus at increased risk for COVID-19 infection?* The Lancet. Respiratory medicine, 2020. 8(4): p. e21-e21.
99. Gheblawi, M., et al., *Angiotensin-converting enzyme 2: SARS-CoV-2 receptor and regulator of the renin-angiotensin system: Celebrating the 20th anniversary of the discovery of ACE2*. Circulation research, 2020. 126(10): p. 1456-1474.
100. Zubair, A.S., et al., *Neuropathogenesis and Neurologic Manifestations of the Coronaviruses in the Age of Coronavirus Disease 2019: A Review*. JAMA Neurology, 2020.

101. Xu, P., S. Sriramula, and E. Lazartigues, *ACE2/ANG-(1-7)/Mas pathway in the brain: the axis of good*. American Journal of Physiology-Regulatory, Integrative and Comparative Physiology, 2011. 300(4): p. R804-R817.
102. Xia, H., et al., *ACE2-mediated reduction of oxidative stress in the central nervous system is associated with improvement of autonomic function*. PloS one, 2011. 6(7).
103. Kawajiri, M., et al., *Angiotensin-converting enzyme (ACE) and ACE2 levels in the cerebrospinal fluid of patients with multiple sclerosis*. Multiple Sclerosis Journal, 2009. 15(2): p. 262-265.
104. Xia, H. and E. Lazartigues, *Angiotensin converting enzyme 2 in the brain: properties and future directions*. Journal of neurochemistry, 2008. 107(6): p. 1482-1494.
105. Jiang, T., et al., *ACE2-Ang-(1-7)-Mas axis in brain: a potential target for prevention and treatment of ischemic stroke*. Current neuropharmacology, 2013. 11(2): p. 209-217.
106. Li, M.-Y., et al., *Expression of the SARS-CoV-2 cell receptor gene ACE2 in a wide variety of human tissues*. Infectious diseases of poverty, 2020. 9: p. 1-7.
107. Baud, D., et al., *Real estimates of mortality following COVID-19 infection*. Lancet Infect Dis, 2020.
108. Li, Y.-C., W.-Z. Bai, and T. Hashikawa, *The neuroinvasive potential of SARS-CoV2 may play a role in the respiratory failure of COVID-19 patients*. Journal of medical virology, 2020: p. 10.1002/jmv.25728.
109. Liguori, C., et al., *Subjective neurological symptoms frequently occur in patients with SARS-CoV2 infection*. Brain, Behavior, and Immunity, 2020.
110. Poyiadji, N., et al., *COVID-19-associated acute hemorrhagic necrotizing encephalopathy: CT and MRI features*. Radiology, 2020: p. 201187.
111. Abboud, H., et al., *COVID-19 and SARS-Cov-2 Infection: Pathophysiology and Clinical Effects on the Nervous System*. World Neurosurgery, 2020. 140: p. 49-53.
112. Kaur, C. and E.A. Ling, *Blood brain barrier in hypoxic-ischemic conditions*. Curr Neurovasc Res, 2008. 5(1): p. 71-81.
113. Wu, Y., et al., *Nervous system involvement after infection with COVID-19 and other coronaviruses*. Brain, Behavior, and Immunity, 2020.
114. Pastor, J., L. Vega-Zelaya, and E. Martín Abad, *Specific EEG Encephalopathy Pattern in SARS-CoV-2 Patients*. Journal of Clinical Medicine, 2020. 9(5): p. 1545.
115. Kandemirli, S.G., et al., *Brain MRI findings in patients in the intensive care unit with COVID-19 infection*. Radiology, 2020: p. 201697.
116. Archie, S.R. and L. Cucullo, *Cerebrovascular and Neurological Dysfunction under the Threat of COVID-19: Is There a Comorbid Role for Smoking and Vaping?* International Journal of Molecular Sciences, 2020. 21(11): p. 3916.
117. Choi, J.-Y., et al., *Altered COVID-19 receptor ACE2 expression in a higher risk group for cerebrovascular disease and ischemic stroke*. Biochemical and Biophysical Research Communications, 2020.
118. Hess, D.C., W. Eldahshan, and E. Rutkowski, *COVID-19-related stroke*. Translational stroke research, 2020: p. 1.
119. Carvalho, F.A., et al., *Central neurogenic respiratory failure: a challenging diagnosis*. Case reports in neurology, 2011. 3(1): p. 75-81.

Table 1. Demographics and baseline characteristics of included studies with COVID-19 infected patients presenting CNS symptoms

Author	Month of Publication	Type of Studies	Country, City / Province	Sample size	No of Positive Cases (Female/Male)	Quality assessment
Yang, X [28]	February, 2020	Cohort	China, Wuhan	52	17 / 35	Good
Yang, W [29]	February, 2020	Cohort	China, Wenzhou	149	68 / 81	Fair
Wang, D [7]	March, 2020	Case series	China, Wuhan	138	63 / 75	Good
Song, F [30]	February, 2020	Retrospective	China, -	51	26 / 25	Good
Shi, H [31]	March, 2020	Cohort	China, Wuhan	81	39 / 42	Good
Qian, G.-Q [32]	March, 2020	Case series	China, Zhejiang province	91	54 / 37	Good
Mao, L [16]	April, 2020	Case series	China, Wuhan	214	127 / 87	Good
Liu, Y [33]	February, 2020	Case series	China, -	12	4 / 8	Fair
Liu, K [34]	February, 2020	Retrospective	China, Wuhan	137	76 / 61	Fair
Li, Y [35]	March, 2020	Cross-Sectional	China, -	54	32 / 22	Fair
Du, Y [36]	April, 2020	Cohort	China, Wuhan	85	23 / 62	Fair
Cheng, JL [37]	March, 2020	Cross-Sectional	China, -	1,079	505 / 573	Fair
Chen, N [15]	January, 2020	Retrospective	China, Wuhan	99	32 / 67	Good
Zhu, W [38]	March, 2020	Retrospective	China, Anhui province	32	17 / 15	Good
Zhou, F [5]	March, 2020	Cohort	China, Wuhan	191	72 / 119	Good
Zhong, Q [39]	March, 2020	Cohort	China, Wuhan	49	42 / 7	Fair
Zheng, Y [40]	April, 2020	Case series	China, Changsha	99	48 / 51	Fair
Zheng, F [41]	March, 2020	Retrospective	China, Changsha	161	81 / 80	Good
Zhao, W [42]	March, 2020	Retrospective Cohort	China, Changsha	118	58 / 60	Good
Zhang, X [43]	March, 2020	Retrospective	China, -	573	278 / 295	Good
Zhang, J [44]	April, 2020	Retrospective Cohort	China, Wuhan	663	342/321	Good
Yu, F [45]	March, 2020	Prospective Cohort	China, Beijing	76	38/38	Fair
Xu, Y. H [46]	February, 2020	Retrospective	China, Beijing	50	21 / 29	Fair
Wu, J [47]	February, 2020	Cross-	China, Chongqing	80	38 / 42	Fair

		Sectional				
Wang, X [48]	March, 2020	Retrospective	China, Wuhan	1012	488 / 524	Good
Wang, L [49]	March, 2020	Retrospective study	China, Wuhan	339	173 / 166	Good
Wan, S [50]	March, 2020	Cross sectional	China, Chongqing	123	57 / 66	Good
Wan, Suxin [51]	2020	Case series	China, Chongqing	135	63 / 72	Good
Tian, S. J. [52]	February, 2020	Retrospective observational	China, Beijing	262	135 / 127	Fair
Tan, C [53]	April, 2020	Retrospective observational	China, Changsha	27	16 / 11	Fair
Sun, C [54]	April, 2020	Retrospective observational	China, Nanyang	150	83 / 67	Good
Shi, S [6]	March, 2020	Retrospective observational	China, Wuhan	416	211 / 205	Fair
Shao, F [55]	April, 2020	Retrospective observational	China, Wuhan	136	46 / 90	Good
Qin, C [56]	March, 2020	Retrospective observational	China, Wuhan	452	217 / 235	Good
Peng, Y.D [57]	March, 2020	Retrospective observational	China, Wuhan	112	59 / 53	Fair
Peng, L [58]	April, 2020	Cross-sectional	China, Shanghai	86	47 / 39	Fair
Moein, S.T [59]	2020	Retrospective observational	Iran, Tehran	60	20 / 40	Fair
Mo, P [60]	2020	Retrospective	China, Wuhan	155	69 / 86	Good
Mi, B [61]	2020	Retrospective	China, Wuhan	10	8 / 2	Fair
Lo, I.L [62]	March, 2020	Retrospective	China, Macau	10	7 / 3	Fair
Liu, M [63]	February, 2020	Retrospective	China, Wuhan	30	20 / 10	Fair
Ling, L [64]	2020	Retrospective	China, Wuhan	8	4 / 4	Poor
Liang, T [65]	March, 2020	Retrospective	China, Wuhan	88	37 / 51	Good
Lei, S [66]	2020	Retrospective	China, Wuhan	34	20 / 14	Good
Lei, P [67]	2020	Retrospective	China, Guiyang	14	6 / 8	Good
Kong, I [68]	February, 2020	Case series	South Korea, National survey	28	13 / 15	Poor
Kim, E.S [69]	2020	Retrospective	Korea, National survey	28	13 / 15	Good

Jin, X [70]	March, 2020	Retrospective	China, Zhejiang	651	320 / 331	Good
Jia, J [71]	2020	Retrospective	China, Qingdao	44	29 / 15	Fair
Huang, C.L [72]	January, 2020	Retrospective	China, Wuhan	41	11 / 30	Good
Hsieh, W.-H [73]	2020	Retrospective	Taiwan, Taichung	43	26 / 13	Fair
Han, R [74]	2020	Retrospective	China, Wuhan	108	70 / 38	Fair
Gupta, N [75]	April, 2020	case series	India, New Delhi	21	7 / 14	Fair
Guo, W [76]	2020	Retrospective	China, Wuhan	174	98 / 76	Good
Guan, W.-j [77]	Feb, 2020	cross	China, National	1099	459 / 640	Good
Feng, Y [78]	April, 2020	Retrospective	China, Wuhan, Shanghai and Anhui	476	205 / 271	Good
Du, R.-H [79]	April, 2020	Retrospective	China, Wuhan	109	35 / 74	Good
Ding, Q [80]	March, 2020	case series	China, Wuhan	5	3 / 2	Good
Chen, Y [81]	April, 2020	Retrospective	China, Wuhan	42	27 / 15	Fair
Chen, X [82]	April, 2020	Retrospective	China, -	104	52 / 52	Good
Chen, T [83]	March, 2020	case series	China, Wuhan	274	103 / 171	Good
Chen, J [84]	March, 2020	Retrospective	China, Shanghai	249	123 / 126	Good
Chen, C [85]	March, 2020	retrospective	China, Wuhan	150	66 / 84	Good
Barrasa, H [86]	2020	case series	Spain, Vitoria	48	21 / 27	Fair

Table 2. Positive PCR, severity, mortality and exposure history of COVID-19 infected patients having CNS symptoms

Variable	No of studies	Total sample size	No positive case	Incidence rate (95% CI)	Heterogeneity		
					I ² (%)	Q	P-Value
Positive Female	60	11425	5363	0.4642 (0.4301-0.4983)	92.2	752.6	<0.0001
Positive Male	60	11425	5919	0.4950 (0.4570-0.5331)	93.8	957.8	<0.0001
Severe or critical or ICU	40	9821	2611	0.3617 (0.2791-0.4484)	98.6	2827.4	<0.0001
Non-Severe or Non-Critical or Non-ICU	37	8095	5694	0.7061 (0.6229-0.7832)	98.3	2154.0	<0.0001
Mortality	25	7087	556	0.1047 (0.0508-0.1733)	98.4	1497.6	<0.0001
Survival	18	3174	2585	0.8143 (0.6575-0.9329)	98.9	1600.9	<0.0001
Exposure History							
Travel history to Wuhan	27	6476	3434	0.5115 (0.3295-0.6920)	99.5	5434.9	<0.0001
Wuhan related exposure	2	567	433	0.7852 (0.7501-0.8183)	-	-	-
Living in Wuhan	2	1151	535	0.4746 (0.4455-0.5037)	-	-	-
Travel history to other infected areas	3	255	133	0.5221 (0.4609-0.5832)	0.0	1.1	0.5664
Contact with patients	19	4422	1504	0.3465 (0.2976-0.3953)	90.1	181.2	<0.0001
Family clustering	6	1182	254	0.2044 (0.1376-0.2712)	84.9	33.1	<0.0001
Unknown exposure history	6	472	63	0.1244 (0.0446-0.2042)	91.3	57.7	<0.0001

Table 3. Clinical Manifestations in COVID-19 infected patients presenting CNS symptoms

Variable	No of studies	Total sample size	No of positive case	Incidence rate (95% CI)	Heterogeneity		
					I ² (%)	Q	p-Value
General symptoms							
Fever	63	11537	8723	0.7939 (0.7394-0.8437)	97.7	2689.5	<0.0001
Fatigue	43	8638	2454	0.3239 (0.2678-0.3800)	97.8	1936.5	<0.0001
Myalgia (Muscle pain or Muscle injury)	41	7479	246	0.1395 (0.1169-0.1621)	88.2	338.4	<0.0001
Nasal congestion	3	2684	151	0.0554 (0.0428-0.0680)	51.2	4.1	0.1290
Rhinorrhea	15	3881	163	0.0447 (0.0258-0.0676)	83.9	87.2	<0.0001
Dry cough or Cough	62	11507	6047	0.5477 (0.4910-0.6038)	97.0	2054.7	<0.0001
Arthralgia	3	204	8	0.0243 (0.000-0.0785)	63.6	5.5	0.0642
Chill	11	3878	512	0.1802 (0.0834-0.3021)	98.4	637.1	<0.0001
GI symptoms ^a	6	1795	83	0.0501 (0.0148-0.0854)	87.7	40.8	<0.0001
Nausea	11	1934	115	0.0595 (0.0387-0.0803)	69.0	32.3	0.0004
Vomiting	11	2703	97	0.0322 (0.0255-0.0397)	23.6	13.1	0.2183
Nausea and/or Vomiting	13	3160	181	0.0518 (0.0337-0.0700)	79.7	59.2	<0.0001
Anorexia or Inappetence	17	2638	588	0.2052 (0.1393-0.2711)	96.8	508.7	<0.0001
Diarrhea	45	8270	909	0.1030 (0.0832-0.1227)	91.0	489.8	<0.0001
Abdominal pain	14	3132	112	0.0345 (0.0205-0.0485)	74.7	51.5	<0.0001
Chest tightness	9	1857	468	0.2383 (0.1784-0.2982)	88.3	68.6	<0.0001
Shortness of breath	26	6538	1177	0.2042 (0.1328-0.2858)	98.1	1329.0	<0.0001
Dyspnea	32	4793	1255	0.2847 (0.2149-0.3599)	96.4	859.7	<0.0001
Chest pain	13	2490	68	0.0249 (0.0075-0.0490)	81.4	64.4	<0.0001
Hemoptysis	13	3518	71	0.0169 (0.0074-0.0289)	65.2	34.5	0.0006
Heart palpitations	2	191	13	0.0671 (0.0316-0.1026)	-	-	-
Pharyngodynia or Throat pain or Pharyngalgia or Throat sore	41	9021	888	0.0983 (0.0767-0.1219)	89.9	399.9	<0.0001
Coryza or Sputum production or Expectoration	30	7239	1909	0.2517 (0.1852-0.3182)	98.4	1791.4	<0.0001
CNS symptoms							
Headache	48	9782	897	0.0869 (0.0676-0.1082)	89.5	449.5	<0.0001
Dizziness	10	2296	139	0.0594 (0.0366-0.0822)	81.3	48.1	<0.0001

Headache and/or Dizziness	5	558	58	0.0978 (0.0733-0.1224)	6.2	4.3	0.3711
Impaired consciousness	2	877	26	0.0190 (0.0100-0.0279)	-	-	-

Table 4. Comorbidities in COVID-19 infected patients with CNS symptoms

Variable	No of studies	Total sample size	NO positive case	Incidence rate (95% CI)	Heterogeneity		
					I ² (%)	Q	P-Value
Any Comorbidities	27	6729	1932	0.3247 (0.2729-0.3766)	95.8	617.9	<0.0001
Cerebrovascular diseases	19	4502	152	0.0347 (0.0229-0.0485)	76.3	76.1	<0.0001
Cardiovascular diseases	35	8394	743	0.1166 (0.0897-0.1435)	97.8	1577.8	<0.0001
Cardiovascular disease and Cerebrovascular diseases	8	1041	200	0.2028 (0.1194-0.2863)	93.5	108.6	<0.0001
Malignancy/Cancer	32	6986	197	0.0278 (0.0187-0.0383)	75.5	126.7	<0.0001
Digestive system disease/ GI disease	7	1661	82	0.0504 (0.0267-0.0740)	82.2	33.7	<0.0001
Immunosuppression	3	604	13	0.0172 (0.0069-0.0276)	28.5	2.8	0.2467
Immunodeficiency	3	1612	11	0.0101 (0.000-0.0227)	71.5	7.0	0.0297
Autoimmune diseases	3	425	4	0.0083 (0.0000-0.0169)	0.0	0.5	0.7860
Hepatitis B	5	1801	40	0.0183 (0.0064-0.0303)	62.5	10.7	0.0306
HIV	3	567	4	0.0058 (0.0000-0.0237)	64.6	5.6	0.0590
Bacterial co-infections/Bacteremia	2	675	8	0.0092 (0.0020-0.0164)	-	-	-
Chronic renal disease	21	5659	119	0.0204 (0.0143-0.0266)	60.1	50.1	0.0002
Chronic liver disease	16	3254	92	0.0218 (0.0136-0.0314)	49.1	29.5	0.0140
Chronic Respiratory disease / Pulmonary disease	15	3215	150	0.0428 (0.0270-0.0586)	82.7	80.7	<0.0001
Endocrinology disorder	8	1338	130	0.0897 (0.0744-0.1049)	43.3	12.3	0.0896
Hyperlipidemia	2	70	3	0.0197 (0.0000-0.0519)	-	-	-
Urinary system disease	2	781	23	0.0280 (0.0165-0.0396)	-	-	-
Hypertension	40	8106	1697	0.2354 (0.1914-0.2794)	96.5	1127.2	<0.0001
Diabetes	40	8045	840	0.1168 (0.0980-0.1357)	87.0	300.4	<0.0001
COPD †	23	5610	148	0.0262 (0.0185-0.0339)	82.9	129.1	<0.0001
Smoking	19	4407	371	0.0827 (0.0586-0.1069)	87.9	149.4	<0.0001

† Chronic obstructive pulmonary disease

Figure legends

Figure 1. The process of surveying, screening, and selecting the articles for this systematic review and meta-analysis based on PRISMA guideline

Figure 2. The incidence rate of CNS manifestations in COVID-19 patients (This figure is Created with BioRender.com)

Figure 1. The process of surveying, screening, and selecting the articles for this systematic review and meta-analysis based on PRISMA guideline

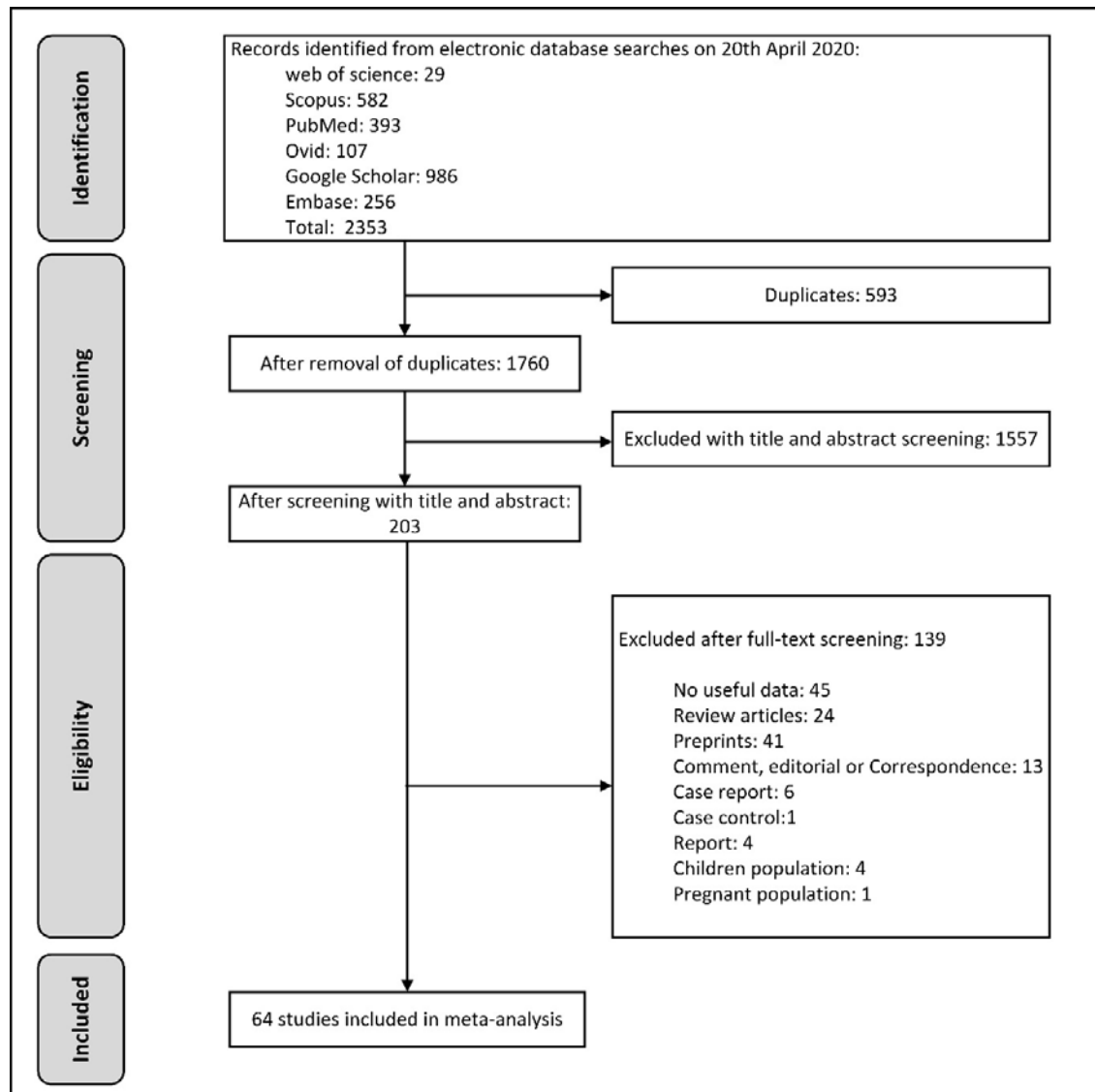


Figure 1. The incidence rate of CNS manifestations in COVID-19 patients (This figure is Created with BioRender.com)

