

EVIDENCE OF GENDER BIAS IN THE DIAGNOSIS AND MANAGEMENT OF COVID-19 PATIENTS: A BIG DATA ANALYSIS OF ELECTRONIC HEALTH RECORDS

Julio Ancochea, MD^{1,2,3}, Jose L. Izquierdo, MD^{4,5}, Savana COVID-19 Research Group*, and Joan B. Soriano, MD^{1,2,3} (ORCID 0000-0001-9740-2994)

¹ Hospital Universitario de La Princesa, Madrid

² Universidad Autónoma de Madrid, Madrid

³ Centro de Investigación en Red de Enfermedades Respiratorias (CIBERES), Instituto de Salud Carlos III (ISCIII), Madrid;

⁴ Universidad de Alcalá, Madrid

⁵ Hospital Universitario de Guadalajara, Guadalajara
all in Spain

*Savana COVID-19 Research Group are: **Ignacio H. Medrano, MD; Alberto Porras, MD, PhD; Marisa Serrano, PhD; Sara Lumbreras, PhD, Universidad Pontificia Comillas (ORCID: 0000-0002-5506-9027); Carlos Del Rio-Bermudez, PhD (ORCID: 0000-0002-1036-1673); Stephanie Marchesseau, PhD; Ignacio Salcedo; Imanol Zubizarreta; Yolanda González, PhD.**

Corresponding author full contact details:

Dr. Joan B Soriano, MD, PhD, FERS, FCCP

Servicio de Neumología

Hospital Universitario de la Princesa, UAM

Diego de León 62, 28005-Madrid, Spain

Email: jbsoriano2@gmail.com

Cellular: +34 618867769

Word count (Abstract): 250 words

Word count (main text): 2,377 words

Number of references: 42 references

Number of illustrations: 5 tables and 3 figures

Date: July 19, 2020

File name: Big_COVIDData-Sex_v04.docx

ABSTRACT

Background: It remains unknown whether the frequency and severity of COVID-19 affect women differently than men. Here, we aim to describe the characteristics of COVID-19 patients at disease onset, with special focus on the diagnosis and management of female patients with COVID-19.

Methods: We explored the unstructured free text in the electronic health records (EHRs) within the SESCAM Healthcare Network (Castilla La-Mancha, Spain). The study sample comprised the entire population with available EHRs (1,446,452 patients) from January 1st to May 1st, 2020. We extracted patients' clinical information upon diagnosis, progression, and outcome for all COVID-19 cases.

Results: A total of 4,780 patients with a test-confirmed diagnosis of COVID-19 were identified. Of these, 2,443 (51%) were female, who were on average 1.5 years younger than males (61.7 ± 19.4 vs. 63.3 ± 18.3 , $p=0.0025$). There were more female COVID-19 cases in the 15-59 yr.-old interval, with the greatest sex ratio (SR; 95% CI) observed in the 30-39 yr.-old interval (1.69; 1.35-2.11). Upon diagnosis, headache, anosmia, and ageusia were significantly more frequent in females than males. Imaging by chest X-ray or blood tests were performed less frequently in females (65.5% vs. 78.3% and 49.5% vs. 63.7%, respectively), all $p < 0.001$. Regarding hospital resource use, females showed less frequency of hospitalization (44.3% vs. 62.0%) and ICU admission (2.8% vs. 6.3%) than males, all $p < 0.001$.

Conclusion: Our results indicate important sex-dependent differences in the diagnosis, clinical manifestation, and treatment of patients with COVID-19. These results warrant further research to identify and close the gender gap in the ongoing pandemic.

Short Title: Gender Bias & COVID-19

Keywords: artificial Intelligence; sex differences; COVID-19; Natural Language Processing; SARS-CoV-2.

INTRODUCTION

As of July 2020, the World Health Organization (WHO) has declared that the coronavirus disease 2019 (COVID-19) pandemic is far from controlled. The cumulative number of confirmed COVID-19 cases across 216 countries, areas, or territories worldwide amounts to over 11,874,226, and 545,481 confirmed deaths have been reported to date.¹ Record daily numbers of both infections and casualties are seen in many countries, with many of them already experiencing ‘second waves’ after lockdowns lift.²

Ever since COVID-19 was initially identified on December 31, 2019 in Wuhan (Hubei Province, China)³, there remain many unknowns regarding the epidemiology, clinical characteristics, prognosis, and management of the disease.⁴ Although substantial efforts have been aimed at improving our clinical understanding of the disease, less is known about the gendered impact of the current pandemic. Indeed, investigating sex- and gender-related issues in healthcare is an ongoing and unmet need,⁵ and it is considered a research priority issue within the WHO’s Sustainable Development Goals, a strategic opportunity to promote human rights, and achieve health for all.⁶

Characterizing the extent to which COVID-19 impacts women and men differently is of vital importance to better understand the consequences of the pandemic and to design equitable health policies and effective therapeutic strategies. In this line, recent evidence suggests that there are indeed sex differences in the clinical outcomes of COVID-19.^{7,8,9} Some hypotheses underscore the influence of hormonal factors,¹⁰ immune response,¹¹ differential distribution of the ACE-2 receptors, and smoking habits,¹² among others.¹³

To further characterize the gendered impact of COVID-19, here we aimed to address whether the frequency and severity of COVID-19 affect women differently than men. In addition, we sought to explore the factors underlying these differences. To achieve these goals, we used big data analytics and artificial intelligence to explore the unstructured, free-text clinical information captured in the electronic health records (EHRs) of a large series of test-confirmed COVID-19 cases.

METHODS

This study is part of the BigCOVIData initiative¹⁴ and was conducted in compliance with legal and regulatory requirements.¹⁵ This study was classified as a ‘non-post-authorization study’ (EPA) by the Spanish Agency of Medicines and Health Products (AEMPS), and was approved by the Research Ethics Committee at the University Hospital of Guadalajara (Spain). We have followed the STrengthening the Reporting of OBservational studies in Epidemiology (STROBE) guidance for reporting observational research.¹⁶

Study design, data source, and patient population

This was a retrospective, multicenter study using secondary free-text data from patients’ EHRs within the SESCAM Healthcare Network in Castilla-La Mancha, Spain. Data was retrieved from all available departments, including inpatient hospital, outpatient hospital, and emergency room, for virtually all types of provided services in each participating hospital. The study period was January 1, 2020 – May 1, 2020.

The study database was fully anonymized and aggregated, so it did not contain patients’ personally identifiable information. Given that clinical information was handled in an aggregate, anonymized, and irreversibly dissociated manner, patient consent regulations do not apply to the present study.

The study sample included all patients in the source population with test-confirmed COVID-19 (mainly PCR+ but also IgG/IgM+).

Extracting free-text from EHRs: EHRead[®]

To meet the study objectives we used *EHRead^ℓ*, a technology developed by SAVANA that applies Natural Language Processing (NLP), machine learning, and deep learning to access and analyze the unstructured, free-text information jotted down by health

professionals in EHRs. The process used for the extraction of clinical data by *EHRead* has been previously described.¹⁷ Briefly, all extracted clinical terms are standardized according to a unique terminology. This custom-made terminology is based on SNOMED-CT and includes more than 400,000 medical concepts, acronyms, and laboratory parameters aggregated over the course of five years of free-text mining. These clinical entities are detected in the unstructured free text are then classified based on EHRs' sections using a combination of regular expression rules and machine learning models. Deep learning (CNN) classification methods, which rely on word embeddings and context information, are also used to determine whether the clinical information is expressed in terms of negative, speculative, or affirmative statements.

Internal validation

For particular cases where extra specifications are required (e.g., to differentiate COVID cases from other mentions of the term related to fear of the disease or potential contact), the detection output was manually reviewed in more than 5000 reports to avoid any ambiguity associated with free-text reporting. All NLP deep learning models used here were validated using the standard training/validation/testing approach; we used a 75/12/13 split ratio in the available annotated data (between 2,000 and 3,000 records, depending on the model) to ensure efficient generalization on unseen cases. For the linguistic validation of analyzed variables regarding COVID-19 mentions, signs/symptoms (e.g., dyspnea, tachypnea, pneumonia), laboratory values (e.g., ferritin, LDH) and treatments (e.g., hydroxychloroquine, cyclosporine, Lopinavir/Ritonavir) we obtained F-scores (the harmonic mean between precision and recall) greater than 0.80 in all cases. However, the validation of 'PCR-confirmed COVID-19' returned a F-score of 0.64; although the precision in the identification of this concept was very high (0.90), the recall value was 0.5. This means that even though our model accurately identifies

PCR+ cases (i.e., very low number of false positives), the prevalence data reported here may be underestimated.

Data Analyses

We generated frequency tables to display the information regarding comorbidities, symptoms, and other categorical variables. Continuous variables (e.g., age) were described using summary tables containing mean, standard deviation, median, minimum and maximum values, and quartiles for each variable. To test for possible statistically significant differences in the distribution of categorical variables between males and females, we used Yates-corrected χ^2 tests for percentages or analysis of variance for normally distributed continuous variables. Sex ratios and their 95% CIs of several epidemiological and clinical indicators are presented. To determine whether the sex ratios of confirmed COVID-19 cases significantly varied across time, we performed linear regression analyses to test the null hypothesis that the slope is equal to zero. All statistical inferences were performed at the 5% significance level using 2-sided tests or 95% CIs.

RESULTS

From a source population of 2,045,385 individuals, we extracted and analyzed the clinical information of 1,446,452 patients with available EHRs from January 1st to May 1st, 2020. Among these, we then retrieved the clinical information upon diagnosis, progression, and outcome for 4,780 patients with a test-confirmed diagnosis of COVID-19, of whom 2,443 (51%) were women. The patient flowchart for female and male patients is depicted in **Figure 1**.

Isolated COVID-19 cases were already identified in the SESCAM system early in January and February 2020, yet they were scarce up to the first week of March 2020.

Shortly after, confirmed cases raised exponentially and reached a daily maximum at the end of March/early April, 2020. This peak in newly reported cases was followed by a slow decrease; by early May 2020, confirmed cases went close to near-zero levels (**Figure 2a**). As shown in **Figure 2b**, the proportion of COVID-19 cases in females remained remarkably constant throughout the beginning of the outbreak up to the plateau, while it significantly increased by the end of the study period. Our linear regression analyses showed that the sex ratio of confirmed cases (newly identified cases in females over new cases in males) significantly increased over time, $p < 0.001$.

Female COVID-19 patients were on average 1.5 years younger than males (61.7 ± 19.4 vs. 63.3 ± 18.3 , $p=0.0025$). In addition, there were more female patients in the 15-59 yr-old interval (**Figure 3**), with the greatest sex ratio (SR; 95% CI) observed in the 30-39 yr.-old interval (1.686; 1.351-2.113) (**Table 1**).

We did not observe any sex-dependent differences in the number of COVID-19 cases per 100,000 individuals; the prevalence rates for female and male patients was 239.7 and 227.6, respectively, with a corresponding sex ratio (95% CI) of 1.054 (0.995-1.115), $p=0.0741$ (**Table 1**). The data shown in **Table 2** indicates an age-dependent increase in reported cases in both males and females, being patients aged >79 years the most affected with rates of 968.1 in men and 689.3 in women, and corresponding sex ratio (95% CI) of 0.712 (0.632-0.803), $p<0.001$.

Regarding symptoms upon diagnosis, headache, anosmia, and ageusia were significantly more frequent in women than men, all $p<0.001$ (**Table 2**). Interestingly, imaging by chest X-ray or blood tests were performed less frequently in females (65.5% vs. 78.3% and 49.5% vs. 63.7%, respectively), all $p<0.001$. Regarding hospital resource use, female COVID-19 patients showed less frequency of hospitalization (44.3% vs. 62.0%) and ICU admission (2.8% vs. 6.3%) than males, all $p<0.001$.

As expected, comorbidities upon COVID-19 diagnosis were more often reported in men. Whereas 78.9% of female patients had at least one of the studied comorbidities at

diagnosis, this percentage was 87.4% in males ($p=0.0183$) (**Table 3**). However, depressive disorders and asthma were significantly more frequent in females, with associated ratios of 2.030 (1.616-2.565) and of 1.743 (1.363-2.241), respectively.

According to the laboratory parameters upon COVID-19 diagnosis, men significantly suffered more from lymphopenia and worse renal function (as per creatinine and urea values but not GFR) than women (**Table 4**). Au contraire, all liver function parameters , as well as D-dimer and all acute phase reactants (except for higher CRP levels in men) were also evenly distributed by sex.

Finally, we explored the treatments received by all COVID-19 patients (**Table 5**). Our results indicate that except chloroquine, the sex ratio for all treatments analyzed was < 1. Notably, most of these comparisons were statistically significant against female patients with COVID-19 (**Table 5**).

DISCUSSION

Using a big data approach and adopting a population perspective, we have identified important sex-dependent differences in the clinical manifestation, diagnosis, management, and hospital resource use associated with COVID-19. Specifically, female teenagers and young adult women were significantly more affected by COVID-19 than their male counterparts in the same age ranges; In addition, our results indicate that headache, as well as ear, nose and throat (ENT) symptoms were significantly more frequent in female COVID-19 patients. Regarding medical outcomes, both hospitalization and ICU admission were less frequent outcomes in females than males. Unfortunately, basic diagnostic tests such as blood tests or imaging were less used in women.

Our results provide further evidence of the inherent gender bias in the Health System, which is thought to originate in medical school and impacts all aspects of healthcare. ¹⁸

¹⁹ Although this bias is well established the context of cardiovascular²⁰, respiratory^{21,22,23}, and infectious diseases (particularly, STDs²⁴), the impact of sex and gender in the ongoing COVID-19 pandemic is just beginning to be unraveled.^{25,26,27} Beyond mechanistic and molecular studies,⁵⁻⁹ more subtle and general events may already play a role in the sex-dependent management of COVID-19 patients.^{28,29} One key question is whether COVID-19 affects women's reproductive health; in other coronavirus-related infectious diseases such as the severe acute respiratory syndrome (SARS) and the middle east respiratory syndrome (MERS), pregnancy has been identified as a risk factor for developing severe complications.^{30,31}

The increased vulnerability of women to COVID-19 is also associated with occupational risks. It is well established that most frontline health care professionals are women, which puts them at a higher risk for infection and negative clinical outcomes.³² Further, women are more likely to serve as the primary caregivers within a household, thus becoming more exposed to the disease. This becomes worrying in disadvantaged populations and resource-poor communities, as well as countries without the benefits of a universal, free-for-all healthcare system.

Strengths and limitations

The main strengths of our research include immediacy, large sample size, and direct access to real-world evidence (RWE). Of note, our methodology ensures absence of any bias in patient selection as our hypothesis that gender impacts diagnosis and management of COVID-19 was assessed *a posteriori*. The observed change in the sex ratio of confirmed cases at the tail of this first wave of the pandemic should be further confirmed in other cohorts and geographical locations.³³ Finally, it is unlikely that our conclusions are impacted by the limitations of pay- or copay-systems, as Spain enjoys an universal, free-for-all health care system.

Our results should be interpreted in light of the following limitations. First, given the variation in COVID-19 severity, it is possible that the free-text information available in EHRs is not homogeneous across patients seen in different points of care (i.e., primary-to-tertiary care). For instance, care providers could have been more likely to further explore (and report more often) milder symptoms in women, who in turn are more likely to be seen in primary care; on the other hand, the more severe symptoms reported in men may be related to the fact that they were more likely to be hospitalized or visit the ICU. Second, it is possible that women were more likely than men to report ENT symptoms.³⁴ Third, as indicated in the methods section, our reported COVID-19 prevalence rates are probably lower than real, as some cases might be missed by the system due to heterogeneous reporting in EHRs. However, the observed low recall metrics in variables related to the identification of PCR-confirmed patients do not affect the quality of the descriptive results since our precision metrics for these concepts were optimal.

Implications for future research

The well-established gender bias in cardiovascular³⁵, respiratory^{36,37,38}, and other diseases should be further investigated in COVID-19 patients. Despite recent regulations and partial improvements, the attention paid to sex and gender differences in biomedical and health research is far from optimal.³⁹ As pointed out in recent reviews, occupational gender segregation makes women particularly vulnerable to COVID-19 since two-thirds of the health and social care workforce worldwide are women.⁴⁰ Crucially, any gender bias in the use of diagnostic testing and imaging, as evidenced in our research from a country with universal, free-for-all healthcare, might be magnified in less privileged settings.

Conclusion

The biological, behavioral, social, and systemic factors underlying the differences in how women and men may experience COVID-19 and its consequences cannot be oversimplified.⁴¹ Regrettably, most research studies are systematically failing to offer comparisons between women and men, girls and boys, and people with diverse gender identities.⁴² Based on the results presented here, we conclude that women were more heavily impacted by COVID-19 than men (specifically teenagers and young adults). In addition, women presented different symptoms at disease onset, clinical outcomes, and treatment patterns. These results warrant further research to identify and close the gender gap in the diagnosis and treatment of COVID-19.

Acknowledgments. We thank all the Savaners for helping accelerate health science with their daily work. We also thank SESCAM (Healthcare Network in Castilla-La Mancha) for its participation in the study and for supporting the development of cutting-edge technology in real time.

Author Contribution statement for each author: JA, IHM, JLI and JBS had the original idea of the study and developed the concept protocol; AP, SL, CDRB, SM, IS and IZ developed the analytical plan and conducted the statistical analyses; CDRB and JBS wrote and edited the manuscript; CDRB and IZ are responsible for figures and data visualization; all authors contributed to drafting and interpretation, and they approved the final version.

Author Disclosure Statement. The Big COVIData study was funded by Savana. Savana employees contributed to the design, data analysis, and writing of the present study. All authors declare there are no other direct or indirect potential conflicts to disclose.

FIGURES

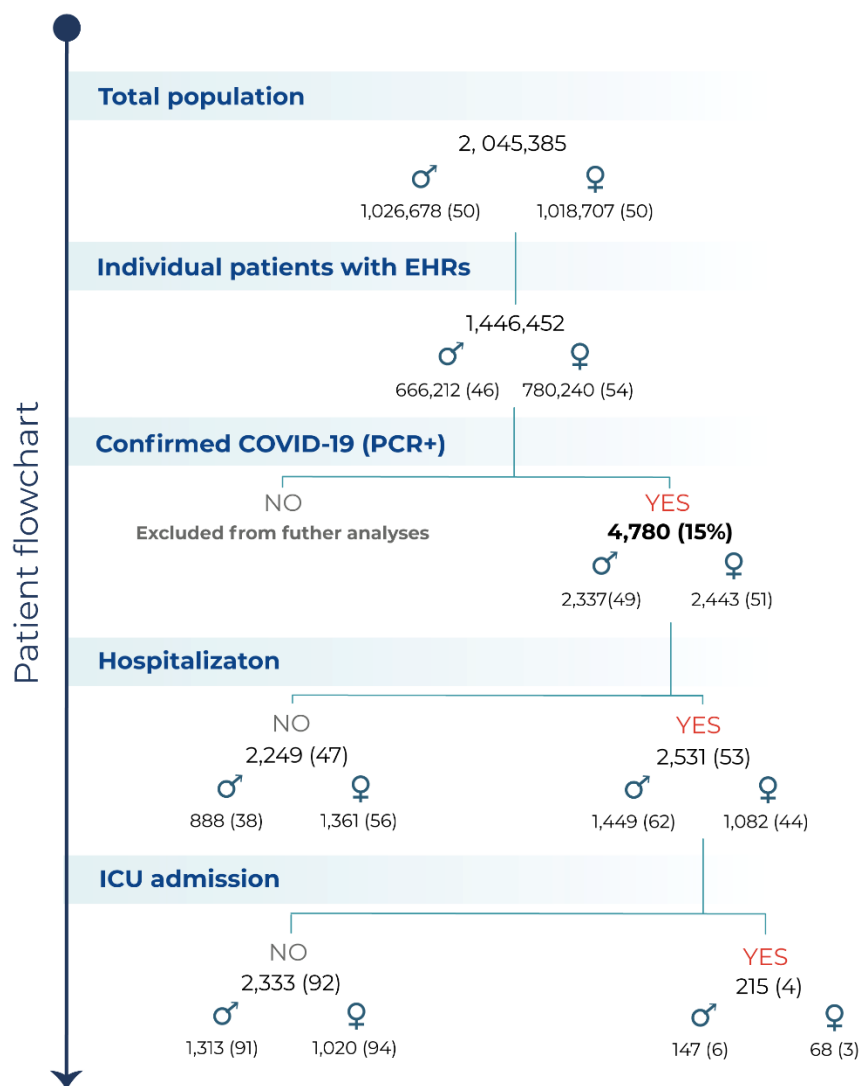


Figure 1. Patient flowchart. Flowchart depicting the total number of inhabitants in the source population, the number (%) of patients with available EHRs analyzed, the number of patients diagnosed with COVID-19, and of those, the number of hospitalizations and ICU admissions. ♂ = male patients; ♀ = female patients.

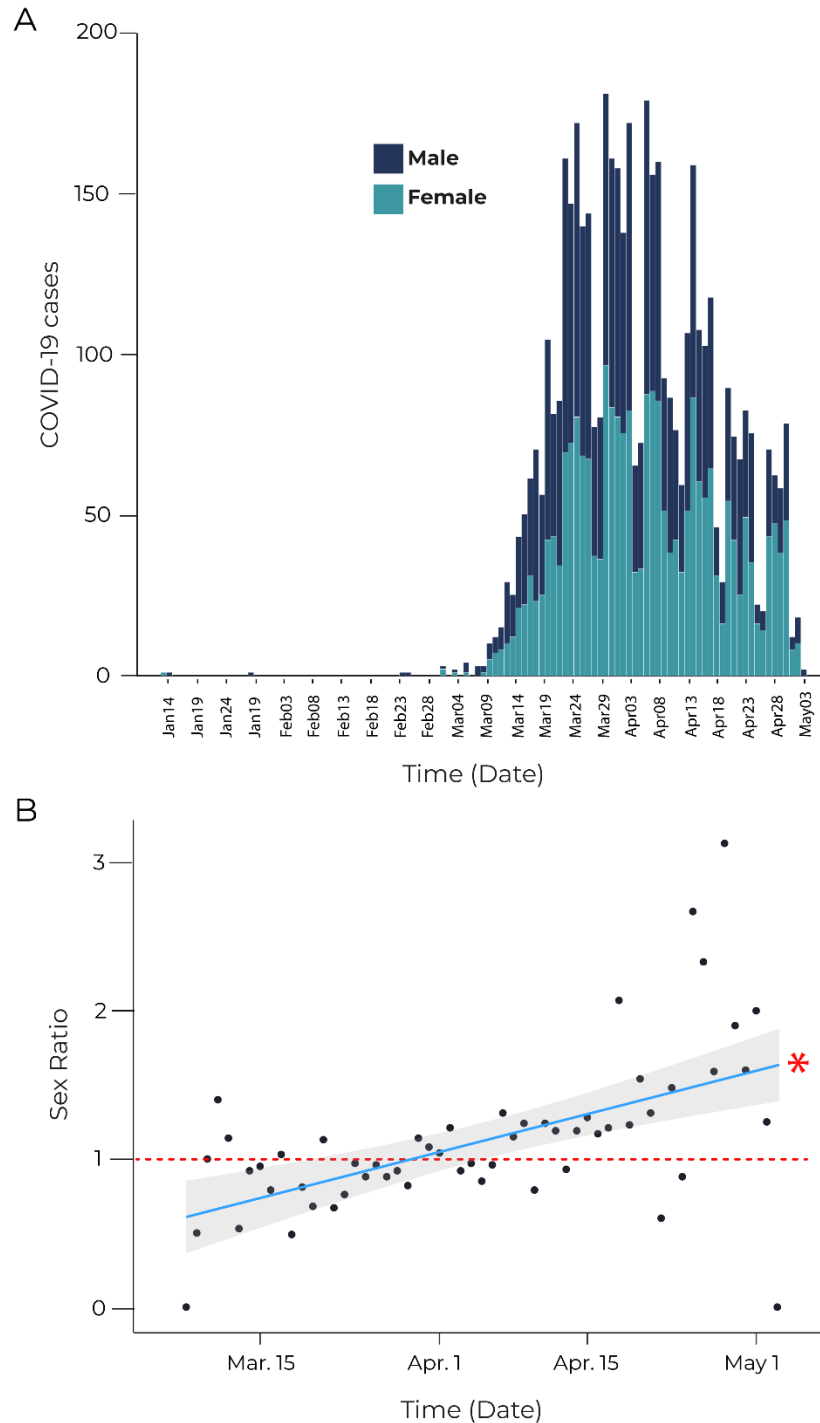


Figure 2. Epidemiological curve and sex ratios showing COVID-19 cases within the study period. (A) Epidemiological curve showing test-confirmed COVID-19 cases (i.e., PCR+/ IgG/IgM+) across time within the study period in male (blue) and female (green) patients. (B) Sex Ratios depicting the variation of confirmed COVID-19 cases over time within the study period, calculated as the number of diagnosed female patients over male patients. The dotted red line indicates a sex ratio of 1 (that is, equal proportion of diagnosed male and female patients). As indicated by the linear regression plot, the sex ratio increases over time, indicating a growing number of diagnosed women (in relation to men). * $p < 0.001$ (slope). Shaded gray area indicates CI (95%).

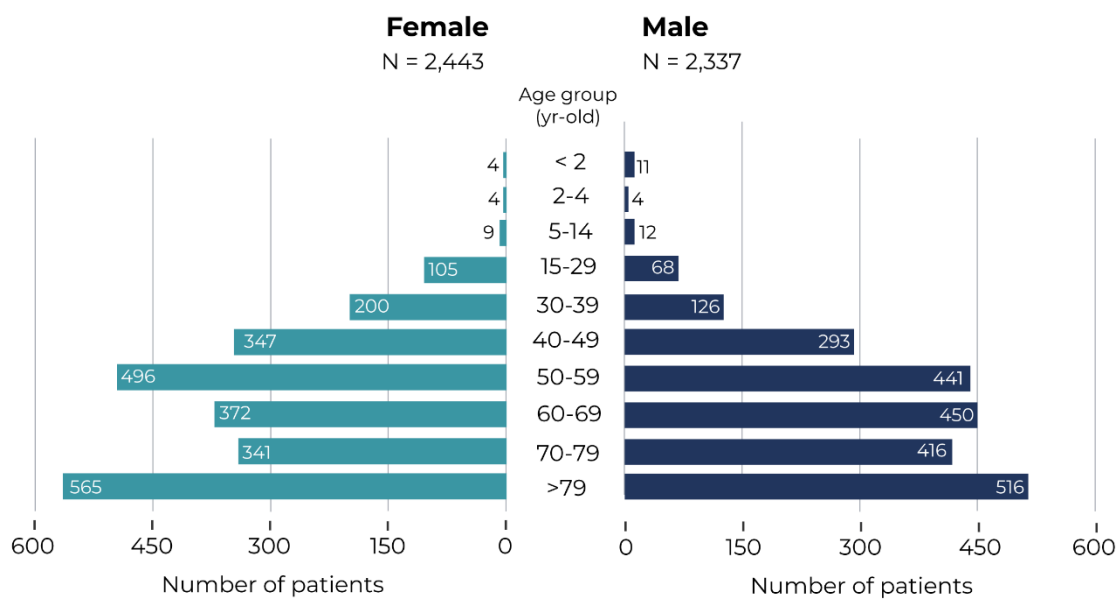


Figure 3. Age and Sex Distribution of COVID-19 patients. Age distribution of incident cases of COVID-19 in females (left) and males (right) in the study population for the period comprised between Jan 1, 2020 and May 1, 2020.

TABLES

TABLE 1. Number of COVID-19 cases by age group and sex

Age (yr-old)	Total population*		Cases (per 100,000)		Sex ratio	IC (95%)	p-value**
	Female	Male	Female	Male			
Total	1,018,707	1,026,678	239.7	227.6	1.054	0.995-1.115	0.0741
<15	148,133	157,505	11.5	17.1	0.672	0.358-1.225	0.2486
15-29	156,432	168,664	67.1	40.3	1.663	1.229-2.267	0.0012
30-39	128,166	136,230	156.0	92.5	1.686	1.351-2.113	<0.001
40-49	159,660	169,961	217.3	172.4	1.261	1.079-1.474	0.0039
50-59	150,689	157,227	329.2	280.5	1.173	1.032-1.335	0.0159
60-69	108,557	109,862	342.7	409.6	0.837	0.729-0.960	0.0121
70-79	85,197	73,926	400.2	562.7	0.711	0.616-0.821	<0.001
>79	81,970	53,301	689.3	968.1	0.712	0.632-0.803	<0.001

Footnote:*Total population of Castilla La-Mancha (Spain). **p-values from Yates-corrected χ^2 test on percentage difference of female vs. male COVID-19 patients.

TABLE 2. Clinical manifestations of COVID-19 upon diagnosis.

	Female, n(%) (N=2,443)	Male, n(%) (N=2,337)	TOTAL, n(%) (N=4,780)	Sex ratio	95%CI	p- value*
Age (yr-old)						
Mean(SD)	61.7(19.4)	63.3 (18.3)	62.5 (18.9)			0.0025
Signs and Symptoms, n (%)						
Patients with no symptoms	705(28.9)	486(20.8)	1191(24.9)	1.387	1.22-1.579	<0.001
Cough	1,094 (44.8)	1,199 (51.3)	2,293 (48.0)	0.873	0.79-0.964	0.0080
Fever	878 (36.0)	1,169 (50.0)	2,047 (42.8)	0.719	0.647-0.797	<0.001
Dyspnoea	759 (31.1)	914 (39.1)	1,673 (35.0)	0.794	0.71-0.888	<0.001
Respiratory crackles	472 (19.3)	627 (26.8)	1,099 (23.0)	0.720	0.631-0.822	<0.001
Diarrhoea	385 (15.8)	350 (15.0)	735 (15.4)	1.052	0.901-1.23	0.5467
Headache	277 (11.3)	166 (7.1)	443 (9.3)	1.596	1.307-1.953	<0.001
Myalgia	230 (9.4)	207 (8.9)	437 (9.1)	1.063	0.874-1.294	0.5757
Lymphopenia	147 (6.0)	186 (8.0)	333 (7.0)	0.756	0.604-0.945	0.0163
Rhonchus	133 (5.4)	179 (7.7)	312 (6.5)	0.711	0.563-0.896	0.0044
Chest pain	158 (6.5)	153 (6.5)	311 (6.5)	0.988	0.785-1.243	0.9635
Anosmia	153 (6.3)	109 (4.7)	262 (5.5)	1.342	1.044-1.731	0.0254
Tachypnoea	74 (3.0)	133 (5.7)	207 (4.3)	0.533	0.397-0.71	<0.001
Wheezing	69 (2.8)	86 (3.7)	155 (3.2)	0.768	0.555-1.059	0.1250
Skin symptoms (*)	39(1.6)	34(1.5)	73(1.5)	1.097	0.689-1.753	0.7834
Rhinitis	24 (1.0)	24 (1.0)	48 (1.0)	0.957	0.538-1.701	0.9938
Ageusia	31(1.3)	15 (0.6)	46 (1.0)	1.966	1.073-3.766	0.0403
Sore throat	27 (1.1)	18 (0.8)	45 (0.9)	1.431	0.789-2.657	0.2993
Dysphagia	12 (0.5)	20 (0.9)	32 (0.7)	0.577	0.272-1.173	0.1746
Neuralgia	16 (0.7)	13 (0.6)	29 (0.6)	1.175	0.561-2.507	0.8025
Hemoptysis	9 (0.4)	12 (0.5)	21 (0.4)	0.721	0.29-1.723	0.5919
Ophthalmologic symptoms (#)	9(0.4)	9(0.4)	18(0.4)	0.957	0.368-2.487	1
Splenomegaly	3 (0.1)	6 (0.3)	9 (0.2)	0.491	0.098-1.924	0.4641
Hepatomegaly	2 (0.1)	5 (0.2)	7 (0.1)	0.400	0.051-1.943	0.4159
Respiratory rate (bpm)						
N	249	339	588			
Mean(SD)	23.3(14.4)	23.9(12.6)	23.7(13.4)			
Patients (n,%) with high RR (>20)	105(42.3)	167(49.3)	272(46.3)	0.856	0.637-1.148	0.3356
Radiological findings, n (%)						
Chest X-ray	1600(65.5)	1829(78.3)	3429(71.7)	0.837	0.766-0.914	<0.001
No abnormalities	552(34.5)	450(24.6)	1002(29.2)	1.402	1.217-1.615	<0.001
Any abnormality	1048(65.5)	1379(75.4)	2427(70.8)	0.869	0.782-0.965	0.0091
Bilateral infiltrates	902(56.4)	1213(66.3)	2115(61.7)	0.850	0.762-0.948	0.0039
Ground-glass opacities	277(17.3)	380(20.8)	657(19.2)	0.833	0.704-0.986	0.0378
Interstitial pattern	152(9.5)	175(9.6)	327(9.5)	0.993	0.790-1.246	0.9972
Alveolar bilateral infiltrates	60(3.8)	88(4.8)	148(4.3)	0.780	0.556-1.088	0.1683
Unilateral infiltrates	7(0.4)	15(0.8)	22(0.6)	0.540	0.203-1.295	0.2393
Arterial blood gases, n (%)						
pH						
N	476	646	1122			
Mean(SD)	7.4(0.1)	7.4(0.1)	7.4(0.1)			
Patients (n,%) with pH>7.42	298(62.6)	449(69.5)	747(66.6)	0.901	0.746-1.087	0.2982
pO₂ (mmHg)						
N	553	778	1331			
Mean(SD)	72.1(24.8)	70.5(26.9)	71.2(26.1)			
Patients (n,%) with pO ₂ <60	144(26.0)	249(32.0)	393(29.5)	0.814	0.644-1.026	0.0924
pCO₂ (mmHg)						
N	443	622	1065			
Mean(SD)	35.8(7.3)	34.5(7.9)	35.1(7.7)			
Patients (n,%) with pCO ₂ >45	46(10.5)	42(6.8)	88(8.4)	1.538	0.993-2.387	0.0661
O₂ Sat (%)						
N	1188	1336	2524			
Mean(SD)	94.1(5.7)	93.3(5.6)	93.7(5.6)			
Patients (n,%) with O ₂ Sat<94	385(32.4)	528(39.5)	913(36.2)	0.820	0.704-0.955	0.0122

Footnote: *p-values from Yates-corrected chi² test of difference between percentage of patients (female vs. male) presenting with the sign/symptom. All tests were performed individually for each variable sign/symptom.

TABLE 3. Comorbidities of COVID-19 patients upon diagnosis.

	Female (N=2,443)	Male (N=2,337)	TOTAL (N=4,780)	Sex ratio	95%CI	p-value*
Any comorbidity, n (%)	1,928(78.9)	2,043(87.4)	3,971(83.1)	0.903	0.830-0.982	0.0183
Hypertension	843(34.5)	1,027(43.9)	1,870(39.1)	0.785	0.705-0.874	<0.001
Heart disease	681(27.9)	908(38.9)	1,589(33.2)	0.718	0.640-0.804	<0.001
Ischemic heart disease	72(2.9)	243(10.4)	315(6.6)	0.284	0.215-0.370	<0.001
Heart failure	145(5.9)	151(6.5)	296(6.2)	0.919	0.726-1.162	0.5164
Diabetes	349(14.3)	502(21.5)	851(17.8)	0.665	0.573-0.771	<0.001
Kidney disease	295(12.1)	463(19.8)	758(15.9)	0.610	0.521-0.713	<0.001
Chronic kidney disease	123(5.0)	202(8.6)	325(6.8)	0.583	0.461-0.733	<0.001
Obesity	279(11.4)	244(10.4)	523(10.9)	1.094	0.913-1.311	0.3545
Cancer	200(8.2)	310(13.3)	510(10.7)	0.617	0.512-0.743	<0.001
Haematologic malignancies	46(1.9)	55(2.4)	101(2.1)	0.801	0.537-1.189	0.3142
Prostate cancer	-	83(3.6)	83(1.7)	-	-	-
Breast cancer	50(2.0)	1(0.0)	51(1.1)	41.852	9.322-974.645	<0.001
Colon cancer	15(0.6)	30(1.3)	45(0.9)	0.481	0.25-0.885	0.0261
Lung cancer	6(0.2)	36(1.5)	42(0.9)	0.163	0.061-0.361	<0.001
Depressive disorder	240(9.8)	113(4.8)	353(7.4)	2.030	1.616-2.565	<0.001
Cerebrovascular disease	152(6.2)	182(7.8)	334(7.0)	0.799	0.639-0.998	0.0545
Ischemic Stroke	68(2.8)	108(4.6)	176(3.7)	0.603	0.441-0.819	0.0015
COPD	64(2.6)	266(11.4)	330(6.9)	0.231	0.173-0.303	<0.001
Asthma	186(7.6)	102(4.4)	288(6.0)	1.743	1.363-2.241	<0.001
Autoimmune disease	111(4.5)	43(1.8)	154(3.2)	2.463	1.737-3.556	<0.001
Obstructive sleep apnea syndrome	42(1.7)	66(2.8)	108(2.3)	0.610	0.409-0.898	0.0157
Alzheimer Disease	48(2.0)	39(1.7)	87(1.8)	1.176	0.768-1.812	0.5201
Epilepsy	30(1.2)	42(1.8)	72(1.5)	0.684	0.423-1.095	0.141
Chronic Liver Disease	26(1.1)	41(1.8)	67(1.4)	0.608	0.366-0.993	0.0605
Parkinson Disease	37(1.5)	27(1.2)	64(1.3)	1.309	0.796-2.18	0.3473
Bronchiectasis	18(0.7)	45(1.9)	63(1.3)	0.385	0.216-0.656	<0.001
Immunodeficiency disorder	29(1.2)	30(1.3)	59(1.2)	0.925	0.55-1.552	0.8668
HIV	6(0.2)	12(0.5)	18(0.4)	0.485	0.165-1.265	0.2042

Footnote: *p-values from Yates-corrected χ^2 test of difference between percentage of patients (female vs. male) diagnosed with each condition or disease. All tests were performed individually for each comorbidity

TABLE 4. Laboratory parameters of COVID-19 patients upon diagnosis.

	Female (N=2,443)	Male (N=2,337)	TOTAL (N=4,780)	Sex ratio	95%CI	p-value*
Patients with blood test n(%)	1,210(49.5)	1,489(63.7)	2,699(56.5)	0.777	0.707-0.855	<0.001
Hematology						
White blood cell (x10e3/mm3)						
N	749	939	1688			
Mean(SD)	11.2(45.3)	11.2(49.0)	11.2(47.4)			
Patients (n,%) with high white blood cell count (>9.5 males / >11.1 females)	178(23.8)	249(26.5)	427(25.3)	0.896	0.722-1.111	0.3448
Neutrophil (x10e3/mm3)						
N	350	443	793			
Mean(SD)	5.6(3.0)	5.7(2.9)	5.7(2.9)			
Patients (n,%) with high neutrophil count (>6.1 males / >7.5 females)	218(37.3)	314(41.9)	532(39.9)	0.892	0.727-1.093	0.2930
Lymphocyte (x10e3/mm3)						
N	520	692	1212			
Mean(SD)	1.5(1.5)	1.5(1.8)	1.5(1.6)			
Patients (n,%) with low lymphocyte count (<1.1)	375(46.0)	578(57.0)	953(52.1)	0.807	0.688-0.947	0.0094
Liver Function						
Bilirubin (mg/dl)						
N	352	497	849			
Mean(SD)	0.7(0.8)	0.8(0.8)	0.8(0.8)			
Patients (n,%) with high levels (>1.2)	23(6.5)	61(12.3)	84(9.9)	0.535	0.318-0.870	0.0167
ALT (u/l)						
N	913	1171	2084			
Mean(SD)	40.3(102.0)	52.1(57.5)	46.9(80.3)			
Patients (n,%) with high levels (>55 male / >53 female)	162(17.7)	305(26.0)	467(22.4)	0.682	0.552-0.839	<0.001
AST (u/l)						
N	735	922	1657			
Mean(SD)	49.9(247.2)	52.8(45.6)	51.5(168.0)			
Patients (n,%) with high levels (>40 male / >37 female)	275(37.4)	454(49.2)	729(44.0)	0.760	0.635-0.908	0.0029
GGT (u/l)						
N	198	315	513			
Mean(SD)	74.1(82.2)	112.7(156.4)	97.8(134.0)			
Patients (n,%) with high levels (>64 male / >36 female)	124(62.6)	154(48.9)	278(54.2)	1.281	0.952-1.722	0.1173
Renal Function						
Creatinine (mg/dl)						
N	1015	1280	2295			
Mean(SD)	1.0(0.8)	1.2(1.3)	1.1(1.1)			
Patients (n,%) with high levels (>1.3)	142(14.0)	285(22.3)	427(18.6)	0.629	0.505-0.780	<0.001
Urea (mg/dl)						
N	879	1129	2008			
Mean(SD)	50.8(47.4)	53.6(38.8)	52.4(42.8)			
Patients (n,%) with low levels (<20)	75(8.5)	33(2.9)	108(5.4)			
Patients (n,%) with high levels (>48)	265(30.1)	422(37.4)	687(34.2)	0.807	0.675-0.963	0.0195

	Female (N=2,443)	Male (N=2,337)	TOTAL (N=4,780)	Sex ratio	95%CI	p-value*
Glomerular Filtration Rate (ml/min/1.73m²)						
N	304	372	676			
Mean(SD)	60.2(30.7)	62.6(30.8)	61.5(30.7)			
Patients (n,%) with low rate (<60)	111(36.5)	125(33.6)	236(34.9)	1.087	0.807-1.463	0.6368
Coagulation, Inflammatory and tissue damage markers						
D-Dimer (mg/l)						
N	831	1006	1837			
Mean(SD)	461(773.2)	492(851.2)	478(816.7)			
Median(Min-Max)	14.1(0-4860)	7.2(0-4976)	8.9(0-4976)			
(Q1-Q3)	0.6-649	0.7-737.8	0.7-691			
Patients (n,%) with high levels (>0,49)	683(82.2)	843(83.8)	1526(83.1)	0.981	0.856-1.124	0.8078
C-Reactive Protein (mg/l)						
N	1173	1439	2612			
Mean(SD)	51.4(77.3)	70.6(92.0)	62(86.2)			
Median(Min-Max)	18(0-524)	29(0-690)	22.9(0-690)			
(Q1-Q3)	4.7-64.8	8.0-96.8	6.0-79.8			
Patients (n,%) with high levels (>8)	763(65.0)	1071(74.4)	1834(70.2)	0.874	0.775-0.986	0.031
Ferritin (ng/ml)						
N	365	470	835			
Mean(SD)	520(762.5)	1037.2(1211.7)	811.1(1070.2)			
Median(Min-Max)	362(4-9559)	745(11-19391)	524.7(4-19391)			
(Q1-Q3)	164.0-606.0	434.8-1299.2	271-1054.5			
Patients (n,%) with high levels (>250 male / >120 female)	298(81.6)	417(88.7)	715(85.6)	0.920	0.752-1.126	0.45
LDH (u/l)						
N	885	1133	2018			
Mean(SD)	373.1(484.1)	402.8(259.1)	389.8(374.9)			
Median(Min-Max)	302(1-13260)	336(16-4276)	319(1-13260)			
(Q1-Q3)	230-434	243-494	236-466			
Patients (n,%) with high levels (>243)	619(69.9)	847(74.8)	1466(72.6)	0.936	0.817-1.072	0.3548
Fibrinogen (mg/dl)						
N	394	499	893			
Mean(SD)	544.8(201.2)	593.4(235.3)	571.9(222.1)			
Median(Min-Max)	530.5(24-1496)	577.9(156-1579)	548(24-1579)			
(Q1-Q3)	370-674.8	370-763	370-720			
Patients (n,%) with high levels (>400)	276(70.1)	343(68.7)	619(69.3)	1.019	0.829-1.253	0.8988
Procalcitonin (ng/ml)						
N	404	543	947			
Mean(SD)	0.7(4.5)	0.9(3.5)	0.8(4)			
Median(Min-Max)	0.1(0-71.2)	0.1(0-50.1)	0.1(0-71.2)			
(Q1-Q3)	0.1-0.2	0.1-0.3	0.1-0.2			
Patients (n,%) with high levels (>0,05)	308(76.2)	485(89.3)	793(83.7)	0.854	0.704-1.035	0.1174

Footnote: *p-values from Yates-corrected chi² test of difference between percentage of patients (female vs. male) in either outcome group (high levels). All tests were performed individually for each parameter.

TABLE 5. Treatments used in Covid-19 patients.

	Female, N(%) (N=2,443)	Male, N(%) (N=2,337)	TOTAL(%) (N=4,780)	Sex Ratio	95%CI	p-value*
Antibacterials						
Azithromycin	1340(54.9)	1465(62.7)	2805(58.7)	0.875	0.797-0.961	0.0054
azithromycin + hydroxychloroquine	1015(41.6)	1220(52.2)	2235(46.8)	0.796	0.720-0.880	<0.001
Ceftriaxone	736(30.1)	1033(44.2)	1769(37.0)	0.682	0.610-0.761	<0.001
Levofloxacin	205(8.4)	298(12.8)	503(10.5)	0.658	0.546-0.793	<0.001
amoxicillin	169(6.9)	209(8.9)	378(7.9)	0.774	0.626-0.955	0.0192
clarithromycin	35(1.4)	36(1.5)	71(1.5)	0.930	0.580-1.491	0.8542
doxycycline	10(0.4)	22(0.9)	32(0.7)	0.439	0.197-0.909	0.0392
Antithrombotic agents						
Vitamin K antagonists	1459(59.7)	1662(71.1)	3121(65.3)	0.840	0.767-0.919	<0.001
Heparins	125(5.1)	151(6.5)	276(5.8)	0.792	0.620-1.010	0.069
Heparins	776(31.8)	1032(44.2)	1808(37.8)	0.719	0.645-0.802	<0.001
Platelet aggregation inhibitors	313(12.8)	519(22.2)	832(17.4)	0.577	0.496-0.671	<0.001
Direct factor Xa inhibitors	81(3.3)	93(4.0)	174(3.6)	0.833	0.614-1.129	0.2696
Direct thrombin inhibitors	7(0.3)	18(0.8)	25(0.5)	0.377	0.145-0.874	0.0353
Enzymes	3(0.1)	6(0.3)	9(0.2)	0.491	0.098-1.924	0.4641
Antimalarials						
hydroxychloroquine	1207(49.4)	1478(63.2)	2685(56.2)	0.781	0.71-0.859	<0.001
chloroquine	33(1.4)	29(1.2)	62(1.3)	1.088	0.657-1.81	0.8388
Antivirals						
ritonavir	439(18.0)	656(28.1)	1095(22.9)	0.640	0.560-0.731	<0.001
darunavir and cobicistat	24(1.0)	31(1.3)	55(1.2)	0.742	0.429-1.267	0.3337
darunavir	0(0)	5(0.2)	5(0.1)			-
Mucolytics						
acetylcysteine	572(23.4)	626(26.8)	1199(25.1)	0.876	0.771-0.994	0.0431
Immunosuppresants						
glucocorticoids	682(27.9)	1019(43.6)	1701(35.6)	0.640	0.572-0.716	<0.001
tozilizumab	37(1.5)	89(3.8)	126(2.6)	0.399	0.267-0.583	<0.001
Selective immunosuppresants	25(1.0)	54(2.3)	79(1.7)	0.444	0.271-0.709	<0.001
ciclosporin	1(0)	6(0.3)	7(0.1)	0.178	0.007-1.081	0.1166
Immunostimulants						
Interferon beta 1b	40(1.6)	60(2.6)	100(2.1)	0.639	0.423-0.954	0.0359

Footnote: *p-values from Yates-corrected χ^2 test of difference between percentage of patients prescribed with the therapeutic agents (male vs. female). All tests were performed individually for each treatment.

REFERENCES

- ¹ WHO coronavirus disease (COVID-19) pandemic <https://www.who.int/emergencies/diseases/novel-coronavirus-2019> [accessed July 9, 2020].
- ² Mahase E. Covid-19: Medical leaders call for rapid review to prepare for second wave. *BMJ*. 2020 Jun 24;369:m2529. doi: 10.1136/bmj.m2529.
- ³ Emergencies preparedness, response. Pneumonia of unknown cause—China. Available at: <https://www.who.int/csr/don/05-january-2020-pneumonia-of-unkown-cause-china/en/> . [Accessed 5 Jan 2020].
- ⁴ Harris C, Carson G, Baillie JK, Horby P, Nair H. An evidence-based framework for priority clinical research questions for COVID-19. *J Glob Health*. 2020 Jun;10(1):011001. doi: 10.7189/jogh.10-011001.
- ⁵ Mello MM, Jagsi R. Standing Up against Gender Bias and Harassment - A Matter of Professional Ethics. *N Engl J Med*. 2020 Apr 9;382(15):1385-1387. doi: 10.1056/NEJMp1915351.
- ⁶ Gupta GR, Oomman N, Grown C, Conn K, Hawkes S, Shawar YR, Shiffman J, Buse K, Mehra R, Bah CA, Heise L, Greene ME, Weber AM, Heymann J, Hay K, Raj A, Henry S, Klugman J, Darmstadt GL; Gender Equality, Norms, and Health Steering Committee. Gender equality and gender norms: framing the opportunities for health. *Lancet*. 2019 Jun 22;393(10190):2550-2562. doi: 10.1016/S0140-6736(19)30651-8.
- ⁷ Klein SL, Dhakal S, Ursin RL, Deshpande S, Sandberg K, Mauvais-Jarvis F. Biological sex impacts COVID-19 outcomes. *PLoS Pathog*. 2020 Jun 22;16(6):e1008570. doi: 10.1371/journal.ppat.1008570. eCollection 2020 Jun.
- ⁸ Parisa Maleki Dana ¹ , Fatemeh Sadoughi ¹ , Jamal Hallajzadeh ² , Zatollah Asemi ¹ , Mohammad Ali Mansournia ³ , Bahman Yousefi ⁴ ⁵ , Mansooreh Momen-Heravi ⁶ An Insight into the Sex Differences in COVID-19 Patients: What are the Possible Causes? *Prehosp Disaster Med*. 2020 Jun 18;1-4. doi: 10.1017/S1049023X20000837. Online ahead of print.
- ⁹ Gebhard C, Regitz-Zagrosek V, Neuhauser HK, Morgan R, Klein SL. Impact of sex and gender on COVID-19 outcomes in Europe. Version 2. *Biol Sex Differ*. 2020 May 25;11(1):29. doi: 10.1186/s13293-020-00304-9.
- ¹⁰ Grandi G, Facchinetti F, Bitzer J. The gendered impact of coronavirus disease (COVID-19): do estrogens play a role?. *Eur J Contracept Reprod Health Care*. 2020 Jun;25(3):233-234. doi: 10.1080/13625187.2020.1766017. Epub 2020 May 29.
- ¹¹ Takahashi T, Wong P, Ellingson M, Lucas C, Klein J, Israelow B, Silva J, Oh J, Mao T, Tokuyama M, Lu P, Venkataraman A, Park A, Liu F, Meir A, Sun J, Wang E, Wyllie AL, Vogels CBF, Earnest R, Lapidus S, Ott I, Moore A, Casanovas A, Dela Cruz C, Fournier J, Odio C, Farhadian S, Grubaugh N, Schultz W, Ko A, Ring A, Omer S, Iwasaki A. Sex differences in immune responses to SARS-CoV-2 that underlie disease outcomes. *medRxiv*. 2020 Jun 9:2020.06.06.20123414. doi: 10.1101/2020.06.06.20123414. Preprint.
- ¹² Leung JM, Yang CX, Tam A, Shaipanich T, Hackett TL, Singhera GK, Dorscheid DR, Sin DD. ACE-2 expression in the small airway epithelia of smokers and COPD patients: implications for COVID-19. *Eur Respir J*. 2020 May 14;55(5):2000688. doi: 10.1183/13993003.00688-2020.
- ¹³ Gargaglioni LH, Marques DA. Let's talk about sex in the context of COVID-19. *J Appl Physiol (1985)*. 2020 Jun 1;128(6):1533-1538. doi: 10.1152/jappphysiol.00335.2020. Epub 2020 May 21.

-
- ¹⁴ <http://bigcovidata.savanned.com> [accessed July 14, 2020]
- ¹⁵ Hernandez Medrano ITG, J; Belda, C; Urena, A; Salcedo, I; Espinosa-Anke, L; Saggion, H. Savana: Re-using Electronic Health Records with Artificial Intelligence. *International Journal of Interactive Multimedia and Artificial Intelligence*. 2017; 4: 8-12.
- ¹⁶ Strengthening the Reporting of OBServational studies in Epidemiology (STROBE) guidance for reporting observational research. Available from <http://strobestatement.org/index.php?id=strobe-home>. Accessed April 13, 2020.
- ¹⁷ Jose Luis Izquierdo, Julio Ancochea, Savana COVID-19 Research Group, View ORCID ProfileJoan B Soriano. CLINICAL CHARACTERISTICS AND PROGNOSTIC FACTORS FOR ICU ADMISSION OF PATIENTS WITH COVID-19 USING MACHINE LEARNING AND NATURAL LANGUAGE PROCESSING doi: <https://doi.org/10.1101/2020.05.22.20109959> [preprint]
- ¹⁸ Dijkstra AF, Verdonk P, Lagro-Janssen AL. Gender bias in medical textbooks: examples from coronary heart disease, depression, alcohol abuse and pharmacology. *Med Educ*. 2008 Oct;42(10):1021-8. doi: 10.1111/j.1365-2923.2008.03150.x. Epub 2008 Aug 27.
- ¹⁹ Gopalakrishnan P, Ragland MM, Tak T. Gender differences in coronary artery disease: review of diagnostic challenges and current treatment. *Postgrad Med*. 2009 Mar;121(2):60-8. doi: 10.3810/pgm.2009.03.1977.
- ²⁰ Bugiardini R, Estrada JL, Nikus K, Hall AS, Manfrini O. Gender bias in acute coronary syndromes. *Curr Vasc Pharmacol*. 2010 Mar;8(2):276-84. doi: 10.2174/157016110790887018.
- ²¹ Martinez CH, Raparla S, Plauschinat CA, Giardino ND, Rogers B, Beresford J, Bentkover JD, Schachtner-Appel A, Curtis JL, Martinez FJ, Han MK. Gender differences in symptoms and care delivery for chronic obstructive pulmonary disease. *J Womens Health (Larchmt)*. 2012 Dec;21(12):1267-74. doi: 10.1089/jwh.2012.3650.
- ²² Aryal S, Diaz-Guzman E, Mannino DM. COPD and gender differences: an update. *Transl Res*. 2013 Oct;162(4):208-18. doi: 10.1016/j.trsl.2013.04.003. Epub 2013 May 15.
- ²³ Assayag D, Morisset J, Johannson KA, Wells AU, Walsh SLF. Patient gender bias on the diagnosis of idiopathic pulmonary fibrosis. *Thorax*. 2020 May;75(5):407-412. doi: 10.1136/thoraxjnl-2019-213968. Epub 2020 Feb 13.
- ²⁴ Kane BG, Guillaume AWD, Evans EM, Goyke TE, Eygnor JK, Semler L, Dusza SW, Greenberg MR. Gender Differences in CDC Guideline Compliance for STIs in Emergency Departments. *West J Emerg Med*. 2017 Apr;18(3):390-397. doi: 10.5811/westjem.2016.12.32440.
- ²⁵ Walter LA, McGregor AJ. Sex- and Gender-specific Observations and Implications for COVID-19. *West J Emerg Med*. 2020 Apr 10;21(3):507-509. doi: 10.5811/westjem.2020.4.47536.
- ²⁶ Pinho-Gomes AC, Peters S, Thompson K, Hockham C, Ripullone K, Woodward M, Carcel C. Where are the women? Gender inequalities in COVID-19 research authorship. *BMJ Glob Health*. 2020 Jul;5(7):e002922. doi: 10.1136/bmjgh-2020-002922.
- ²⁷ Maleki Dana P, Sadoughi F, Hallajzadeh J, Asemi Z, Mansournia MA, Yousefi B, Momen-Heravi M. An Insight into the Sex Differences in COVID-19 Patients: What are the Possible Causes?. *Prehosp Disaster Med*. 2020 Jun 18:1-4. doi: 10.1017/S1049023X20000837.
- ²⁸ Munch S. Gender-biased diagnosing of women's medical complaints: contributions of feminist thought, 1970-1995. *Women Health*. 2004;40(1):101-21. doi: 10.1300/J013v40n01_06.
- ²⁹ Barsky AJ, Peekna HM, Borus JF. Somatic symptom reporting in women and men. *J Gen Intern Med*. 2001 Apr;16(4):266-75. doi: 10.1046/j.1525-1497.2001.00229.x.

-
- ³⁰ Wong SF, Chow KM, Leung TN, et al. Pregnancy and perinatal outcomes of women with severe acute respiratory syndrome. *Am J Obstet Gynecol* 2004; 191: 292–97.
- ³¹ Alfaraj SH, Al-Tawfiq JA, Memish ZA. Middle East respiratory syndrome coronavirus (MERS-CoV) infection during pregnancy: report of two cases & review of the literature. *J Microbiol Immunol Infect* 2019; 52: 501–03.
- ³² Langer A, Meleis A, Knaul FM, et al. Women and health: The key for sustainable development. *Lancet* 2015;386: 1165–1210.
- ³³ Altman DG, Royston JP. The hidden effect of time. *Stat Med*. 1988 Jun;7(6):629-37. doi: 10.1002/sim.4780070602.
- ³⁴ Enck P, Klosterhalfen S. Does Sex/Gender Play a Role in Placebo and Nocebo Effects? Conflicting Evidence From Clinical Trials and Experimental Studies. *Front Neurosci*. 2019 Mar 4;13:160. doi: 10.3389/fnins.2019.00160.
- ³⁵ Bugiardini R, Estrada JL, Nikus K, Hall AS, Manfrini O. Gender bias in acute coronary syndromes. *Curr Vasc Pharmacol*. 2010 Mar;8(2):276-84. doi: 10.2174/157016110790887018.
- ³⁶ Martinez CH, Raparla S, Plauschinat CA, Giardino ND, Rogers B, Beresford J, Bentkover JD, Schachtner-Appel A, Curtis JL, Martinez FJ, Han MK. Gender differences in symptoms and care delivery for chronic obstructive pulmonary disease. *J Womens Health (Larchmt)*. 2012 Dec;21(12):1267-74. doi: 10.1089/jwh.2012.3650.
- ³⁷ Aryal S, Diaz-Guzman E, Mannino DM. COPD and gender differences: an update. *Transl Res*. 2013 Oct;162(4):208-18. doi: 10.1016/j.trsl.2013.04.003. Epub 2013 May 15.
- ³⁸ Assayag D, Morisset J, Johansson KA, Wells AU, Walsh SLF. Patient gender bias on the diagnosis of idiopathic pulmonary fibrosis. *Thorax*. 2020 May;75(5):407-412. doi: 10.1136/thoraxjnl-2019-213968. Epub 2020 Feb 13.
- ³⁹ Nieuwenhoven L, Klinge I. Scientific excellence in applying sex- and gender-sensitive methods in biomedical and health research. *J Womens Health (Larchmt)*. 2010 Feb;19(2):313-21. doi: 10.1089/jwh.2008.1156.
- ⁴⁰ King T, Hewitt B, Crammond B, Sutherland G, Maheen H, Kavanagh A. Reordering gender systems: can COVID-19 lead to improved gender equality and health?. *Lancet*. 2020 Jun 19;396(10244):80-1. doi: 10.1016/S0140-6736(20)31418-5. Online ahead of print.
- ⁴¹ Gausman J, Langer A. Sex and Gender Disparities in the COVID-19 Pandemic. *J Womens Health (Larchmt)*. 2020 Apr;29(4):465-466. doi: 10.1089/jwh.2020.8472.
- ⁴² López-Alcalde J, Stallings E, Cabir Nunes S, Fernández Chávez A, Daheron M, Bonfill Cosp X, Zamora J. Consideration of sex and gender in Cochrane reviews of interventions for preventing healthcare-associated infections: a methodology study. *BMC Health Serv Res*. 2019 Mar 15;19(1):169. doi: 10.1186/s12913-019-4001-9.