

## 1 Humoral Response Dynamics Following Infection with SARS-CoV-2

2 Louis Grandjean MBBS<sup>1,2\*</sup>, Anja Saso MBBS<sup>2,3,4\*</sup>, Arturo Torres MSc<sup>1,5\*\*</sup>, Tanya Lam MBBS<sup>2\*\*</sup>,  
3 James Hatcher MBBS<sup>6</sup>, Rosie Thistlethwayte BA<sup>7</sup>, Mark Harris<sup>8</sup>, Timothy Best<sup>5</sup>, Marina  
4 Johnson PhD<sup>1</sup>, Helen Wagstaffe PhD<sup>1</sup>, Elizabeth Ralph MSc<sup>9</sup>, Annabelle Mai MSc<sup>9</sup>, Caroline  
5 Colijn PhD<sup>10</sup>, Judith Breuer MBBS<sup>1</sup>, Matthew Buckland MBBS<sup>9</sup>, Kimberly Gilmour MBBS<sup>9</sup>,  
6 David Goldblatt MB ChB<sup>1</sup> and the Co-Stars Study Team<sup>2†</sup>

7  
8 \*Contributed equally (LG is also corresponding author)

9 \*\*Contributed equally

10

### 11 Author Affiliations:

12

13 <sup>1</sup>Department of Infection, Inflammation and Immunity, Great Ormond Street Institute of  
14 Child Health, University College London, 30 Guilford Street, London, UK WC1N 1EH

15 <sup>2</sup>Department of Infectious Diseases, Great Ormond Street Hospital, Great Ormond Street,  
16 London, WC1N 3JH

17 <sup>3</sup>Department of Tropical and Infectious diseases; LSHTM, Keppel St, Bloomsbury, London  
18 WC1E 7HT

19 <sup>4</sup>MRC Gambia at LSHTM, PO Box 273, Fajara, The Gambia

20 <sup>5</sup>Department of Medicine, Imperial College, Paddington, London, W2 1NY

21 <sup>6</sup>Department of Microbiology, Great Ormond Street Hospital, Great Ormond Street, London,  
22 WC1N 3JH

23 <sup>7</sup>Management, Great Ormond Street Hospital, Great Ormond Street, London, WC1N 3JH

24 <sup>8</sup>Quality Improvement, Great Ormond Street Hospital, Great Ormond Street, London, WC1N  
25 3JH

26 <sup>9</sup>Clinical Immunology, Camelia Botnar Laboratories, Great Ormond Street Hospital, Great  
27 Ormond Street, London, WC1N 3JH

28 <sup>10</sup>Department of Mathematics, Simon Fraser University, Vancouver, British Columbia,  
29 Canada BC V5A

30

### 31 'The Co-Stars Study Team:

Dorcas Mirambe-Korsah	Fernanda Torrente	Jakub Wyszynski	Victoria Gander
Amy Leonard	Louise Myers	Aimee Vallot	Camille Paillass
Rose Fitzgerald	Adam Twigg	Rabia Manaf	Lois Gibbons
Hollie Powell	Richard Nar-Dorh	Ally Gray	Elias Fernandez
Aline Minja	Emily Beech	Waffa Girshab	Pei Shi Chia
Kate Webb	Malti Nakrani	Kim Gardiner	Valerija Karaluka
Karen Ryan	Dorothy Lee	Katie Groves	Hamad Khan
Shamime Nsubuga	Olivia Wilkinson	Rosie- Julia Spires	Nuria Sanchez- Clemente
Sapriya Kaur	Natasha Carroll	Jemma Efford	Gabriel Bredin
Celma Marisa Dos Santos Domingues	Sophie Foxall	Helen Ashton	Abbey Afzal
Sally Mainland	Kate Crumpler	Lucinda Dawson	Claire Smith
Maria Tabbu	Laura Chiverton	Jade Sugars	Jordan Mooney
Dorothy Chikusu	Fariba Tahami	Baratth Samy	Shomona Begum

Dhimple Patel	Philippa Wiltshire	Annie Susay	Anna Ryan
Luke Lancaster	Kavita Thind	Kate Speller	Rachel Sterling
Connor Tugulu	Sandhya Ghurburrun	Steffi Gray	Joy Mugas
Moe Kishma	Kathleen Akpokomua	Sophie White	Eleana Pieri
Sabina Shamsad	Demi Alexandrou	Odera Aguele	
Anamika Jain	Subishma Gautam	Oliver Simms	

32

33 **Corresponding author contact details:**

34 Dr Louis Grandjean

35 Department of Infection, Inflammation and Immunity, Institute of Child Health, 30 Guilford

36 Street, London, WC1N

37 [l.grandjean@ucl.ac.uk](mailto:l.grandjean@ucl.ac.uk)

38

39 **Trial registration number:** NCT04380896.

40

41 **Key words:** immunity, serology, antibody, ELISA, kinetics, neutralisation, SARS-CoV-2,

42 COVID-19, virus, nucleoprotein, spike protein

43

44

45

46

47 **Abstract**

48 **Objectives** To understand humoral dynamics following SARS-CoV-2 infection

49 **Design** Prospective Cohort Study

50 **Setting** Great Ormond Street Hospital (Central London Paediatric Hospital)

51 **Participants** 67 healthcare workers aged >18 years who provided monthly serial serological  
52 samples from 29th April 2020 until 30<sup>th</sup> June 2020.

53 **Main outcome measures** The change in monthly serial antibody titers to SARS-CoV-2  
54 nucleoprotein (N), spike protein and the receptor binding domain of the spike protein.

55 **Results** The mean estimated half-life of the nucleoprotein antibody was 52 days (95% CI 42-  
56 65). The spike and RBD antibody had significantly longer mean half-lives of 81 days (95% CI  
57 61-111) and 83 days (95% CI 55-137) respectively. An ACE-2 receptor competition assay  
58 demonstrated significant correlation between the spike and RBD antibody titers and ACE2  
59 receptor blocking in-vitro. The time to a negative nucleoprotein antibody test for 50% of  
60 the seropositive population was predicted to be 195 days (95% CI 163-236).

61 **Conclusions** After SARS-CoV-2 infection, the predicted half-life of nucleoprotein antibody  
62 was 52 days with 50% of seropositives becoming seronegative to this antibody at 195 days.  
63 Widely used serological tests that depend on the nucleoprotein antibody will therefore  
64 underestimate the true prevalence of infection within a year following the majority of  
65 infections.

66

67

68

69

70

## 71 **Introduction**

72 Since appearing as a cluster of pneumonia cases in December 2019 in Wuhan, China,  
73 Coronavirus disease (COVID-19) has rapidly spread worldwide.[1] As of July 7<sup>th</sup>, there have  
74 been 11,863,477 cases, resulting in 544,949 deaths and a global health crisis, with  
75 significant social, economic and public health implications.[2] COVID-19 is caused by severe  
76 acute respiratory syndrome coronavirus-2 (SARS-CoV-2), an enveloped RNA  $\beta$ -  
77 coronavirus.[3] Specific immunoglobulin (IgG) antibody responses to the SARS-CoV-2  
78 trimeric spike (S) protein, nucleoprotein (N) protein and the receptor-binding domain  
79 (RBD) develop between 6-15 days following disease-onset.[4] The S-protein, which contains  
80 the RBD, binds to host cells via the angiotensin-converting-enzyme-2 (ACE-2) receptor, and  
81 membrane fusion occurs before viral entry.[5,6] The N-protein plays an important role in  
82 transcription enhancement and viral assembly.[7]

83

84 The dynamics and duration of the antibody response to S-protein, N-protein and the RBD  
85 following infection or exposure with SARS-CoV-2 remain poorly understood.[8–10]  
86 Quantifying the humoral response shortly after infection limits the inferences that can be  
87 made about longer term dynamics. SARS-CoV-2-specific antibodies (particularly to the S-  
88 protein) detected in convalescent individuals have been shown to strongly correlate with  
89 virus-specific T-cell responses and viral neutralisation *in vitro*, as well as protection against  
90 disease in animal models, following passive transfer of selected monoclonal  
91 antibodies.[8,11–15] It is unknown whether re-infection in humans occurs following primary  
92 infection with SARS-CoV-2. However, re-infection did not occur in rhesus macaques that  
93 were re-challenged in the presence of detectable endogenous antibodies.[16,17] Taken

94 together, these findings highlight the importance of characterising humoral dynamics  
95 following SARS-CoV-2 infection.

96 A large seroprevalence survey undertaken in Spain, recently reported a SARS-CoV-2  
97 seroprevalence of 5.0%[18]. This study used a chemiluminescent assay to detect  
98 nucleoprotein antibody together with a point of care lateral flow device. In contrast, Public  
99 Health England undertook a SARS-CoV-2 spike antibody seroprevalence survey of 1000  
100 samples from blood donors in London estimating a seroprevalence of 17.5% in the first  
101 week of April[19]. Whilst many socio-demographic factors could account for the different  
102 estimates of seroprevalence between these studies, one explanation may be the relative  
103 decay of the spike and the nucleoprotein antibodies.

104

105 Longitudinal serological data from Taiwan's national SARS database estimated the half-life  
106 of SARS-CoV-1 neutralizing antibody to be 45 days,[20] whilst 74% of hospitalized patients in  
107 China had detectable SARS-CoV-1 IgG at 36 months post-infection.[21] After pauci-  
108 symptomatic MERS infection, antibodies rapidly decayed and were undetectable within one  
109 year.[22] However, following severe disease, antibodies have been detected up to 34  
110 months post-infection.<sup>23</sup>

111

112 In order to evaluate SARS-CoV-2 antibody kinetics and longevity, we launched the Covid-19  
113 Staff Testing of Antibody Responses Study (Co-STARS), a longitudinal prospective cohort  
114 study of healthcare workers designed to measure serial quantitative antibody levels over 1-  
115 year. In parallel with serological data, detailed demographic, clinical and socioeconomic  
116 data was also collected across different hospital departments, to provide a comprehensive  
117 insight into factors that may influence antibody dynamics.

118

119

120

121 **Methods**

122

123 Study setting and design: Co-STARS is a 6-year single-centre, two-arm, prospective  
124 longitudinal cohort study of healthcare workers at a central London paediatric hospital  
125 (Great Ormond Street Hospital for Children). The study was approved to start by the United  
126 Kingdom NHS Health Research Authority on 29<sup>th</sup> April 2020 and registered on  
127 ClinicalTrials.gov (NCT04380896). Informed consent was obtained from all participants. The  
128 Study Protocol and Supplementary Materials submitted with this paper include detailed  
129 methods, power calculations and the data analysis approach.

130

131 Study participants: All hospital staff members  $\geq 18$  years of age were eligible for the study,  
132 provided they did not display symptoms consistent with SARS-CoV-2 infection at  
133 recruitment. If they had been symptomatic or had suspected contact with COVID-19  
134 previously, at least 21 days were required to have passed prior to their baseline visit. Those  
135 significantly immunosuppressed[23] or those who had previously received blood products  
136 (including immunoglobulins or convalescent sera) since September 2019 were excluded  
137 from the study.

138

139 Data Collection: After providing informed consent, participants undertook a detailed,  
140 standardised online questionnaire at study entry. This included socio-demographic factors,  
141 details of previous exposure to and symptomatic episodes consistent with COVID-19, any  
142 subsequent complications, previous SARS-CoV-2 diagnostic test results, past medical and  
143 contact history, and a comprehensive assessment of risk factors for exposure, susceptibility

144 to infection and severe disease. Blood samples were also taken at baseline and each follow-  
145 up visit for determination of SARS-CoV-2 serology.

146

147 Measurement of SARS-CoV-2 serum antibody and viral RNA by PCR: All serological samples  
148 were analysed by the Meso Scale Discovery (MSD) Chemiluminescent binding assay that  
149 detects and quantifies anti-SARS-CoV-2 IgG specific for trimeric S-protein, RBD and N-  
150 protein. All samples were run in parallel on the commercial ELISA EDI kit (Epitope  
151 Diagnostics Inc., California) that detects the anti-SARS-CoV-2 IgG to N-protein. The EDI kit  
152 did not quantify titers but did provide a positive, negative or equivocal test output with a  
153 ratio relative to the positive control.

154

155 An MSD® 96-well Custom Competition Assay designed to measure the inhibition of ACE-2  
156 receptor binding to S or RBD by serum-derived antibody (MSD, Maryland) was run on 94  
157 serial samples samples from 46 participants (two participants had 3 serial samples) in order  
158 to establish *in vitro* correlates of functional immunity. IgG levels for the MSD assay were  
159 expressed as arbitrary units calibrated against a set of reference sera distributed by the  
160 National Institute of Biological Standards and Control (Potters Bar, UK) under the auspices of  
161 the World Health Organisation. Assay qualification and performance were evaluated in our  
162 laboratories (see Supplementary Materials).

163

164 SARS-CoV-2 real-time reverse-transcriptase polymerase chain reaction (RT-PCR) targeting  
165 the N-gene was performed following RNA extraction, as previously described by colleagues  
166 at our laboratory.[24]

167



168 Follow-Up Visits: All seropositive participants are being followed up monthly (ongoing) for  
169 repeat antibody testing for the first 6 months then 6-monthly thereafter. Seronegative  
170 participants will be followed up 6-monthly. At each follow-up visit, participants completed a  
171 shortened version of the baseline questionnaire, focussing on any recurrent COVID-19  
172 exposure and/or symptoms.

173

174 Study outcomes: The primary outcome of the study was to establish humoral dynamics  
175 following SARS-CoV-2 infection. Secondary outcomes measures included the incidence of  
176 SARS-CoV-2 re-infection, the dynamics of the cellular response, IgA dynamics and the clinical  
177 and demographic factors that are associated with the rate of antibody decay.

178

179 Statistical analysis: Power calculations were based on log-linear regression using the  
180 `pwr.f2.test` function in R for general linear models. We assumed a study power of 80% and  
181 provided a study power for a variety of effect sizes and co-variates. We provided estimates  
182 for the study size required to detect effect sizes of ~20% changes in log linear titers over 1  
183 year with (with an alpha of 0.05) **(Supplementary Figure 1).**

184

185 We used a Bayesian framework to model antibody decay from 21 days post infection as a  
186 negative exponential (log-linear) function of time using a random intercepts mixed effects  
187 model, with random effects at the individual level to adjust for the titer variation between  
188 patients. The 21-day starting point for antibody decay was chosen *a-priori* based on existing  
189 data of antibody responses to SARS-CoV-2.[25] Plotting the rate of decay against time  
190 supported our hypothesis that the rate of the negative exponential decay would remain  
191 constant over time **(Supplementary Figure 2).**

192

193 Antibody titers were log-transformed and a linear model was fitted to the paired points  
194 using RSTAN in R (R: A language and environment for statistical computing. Foundation for  
195 Statistical Computing, Vienna, Austria. URL <http://www.R-project.org/>).

196

197 Variability in antibody titers was modelled by introducing a random effects parameter at the  
198 level of the individual. Biologically important covariates that were hypothesized a-priori to  
199 influence antibody titers, including age, sex, BMI, comorbidities and ethnicity, were  
200 considered and the Deviance Information Criterion (DIC) was used to define the model of  
201 best fit to the data. The prior for the slope was drawn from a normal distribution (mean=0,  
202 variance=1), the intercept was a uniform distribution (min=0, max=10) while the random  
203 effects were taken from a normal distribution (mean=0, sigma\_u) where sigma\_u was  
204 estimated from the model.

205

206 The posterior probabilities of the slope were applied to infer the half-life distributions, using  
207 the following relationship between the half-life and the slope:  $t_{1/2} = \ln(2)/r$  where  $r$  is the  
208 slope sampled from the posterior distribution and  $t_{1/2}$  is the half-life.

209

210 The time to test negativity for 50% of the population,  $t_{\text{neg}50}$ , was defined as the time for the  
211 initial antibody titers (measured from 21 days after symptom-onset) to decline to the  
212 negative threshold value for the assay. The confidence limits around the curves were  
213 derived by repeated sampling from the posterior distribution of the starting titers (including  
214 their random effect offset) combined with repeated sampling from the posterior slopes.

215

216

217 Patient and Public Involvement: Participants were first invited to be involved in the research  
218 by hospital wide e-mail via the GOSH communications department. Before the study was  
219 undertaken, a survey was conducted by the trust that demonstrated the importance of this  
220 research to the hospital staff. A subset of 30 participants was asked for their feedback  
221 throughout the study preparation, design, implementation and analysis. This same group  
222 were involved in determining the design and dissemination of results to all study  
223 participants. Dissemination of the results will take place to all participants at the trust wide  
224 level.

225

226 **Results**

227 Socio-Demographic and Clinical Details: A total of 137 longitudinal samples that were in  
228 pairs or triplicate from 67 of the first participants in the Co-Stars study were available for  
229 analysis. Fifty-three participants (79%) of the cohort were women and 25% were from Black,  
230 Asian, Minority Ethnic (BAME) backgrounds (17/67). Importantly, none of the participants  
231 had been admitted to hospital and only 5% had underlying comorbidities. Age, clinical, and  
232 demographic variables for the cohort are reported in Supplementary Table 1.

233

234 Model Fit: The combination of co-variates that provided the best model fit was determined  
235 by optimizing the Deviance Information Criterion (**Supplementary Table 2**). Log-linear  
236 models were fitted to the decay of each SARS-CoV-2 antibody with confidence limits on the  
237 slope included with and without individual random effects (**Figure 1**). Monte Carlo Markov  
238 Chain (MCMC) plots converged appropriately for the 3 antibodies and estimated parameters  
239 (**Supplementary Figure 3**).

240

241

242

243 Half-life Estimations: The mean posterior probability of the slope of the N-antibody was  
244 twice the magnitude of the mean slopes of the S and RBD antibodies (**Supplementary Figure**  
245 **4**). This translated to a half-life of 52 days (95% CI 42-65) for the nucleoprotein antibody and  
246 a half-life of 81 (95% CI 61-111) and 83 days (95% CI 55-137) for the S- and RBD-antibody,  
247 respectively (**Figure 2**).

248 Time-to-Negativity: When these estimated rates were extrapolated to time-to-negativity  
249 (**Figure 3**) and time-to-undetectable curves (**Supplementary Figure 5**), 50% of the  
250 seropositive population by the MSD assay were estimated to be negative to the N-antibody  
251 at 195 days (95% CI 163-236); by comparison, 100% of subjects were estimated to remain  
252 positive to the trimeric S-antibody at the same time point.

253

254 The time-to-negativity for 50% of the seropositive population for the RBD antibody was  
255 predicted to be 260 days (95% CI 180-418) and for the trimeric S antibody was 532 days  
256 (95% CI 418-667). However, the time-to-negativity was reduced to 67 days in the EDI assay  
257 (95% CI 47-91) days. (**Figure 3**).

258

259 Association of Demographic Variables with Antibody Titers: Both BAME participants and  
260 those >50 years were significantly associated with increased initial antibody titers. Neither  
261 co-morbidities, sex nor BMI were significantly associated with increased antibody titers.  
262 Interactions between age and time, sex and time and ethnicity and time were also examined  
263 and none were significant (**Supplementary Table 3 and Supplementary Figure 7**).

264 Competitive Binding Assay: There was a strong positive linear correlation between ACE-2  
265 receptor blocking and both S-protein ( $R^2=0.72$ ,  $p<0.001$ ) and RBD antibody titers ( $R^2=0.77$ ,  
266  $p<0.001$ ) (**Figure 4**).

267 **Discussion**

268 This prospective study of antibody responses following SARS-CoV-2 infection has estimated  
269 the mean half-life of the nucleoprotein (N) antibody to be only 52 days. Consequently, 50%  
270 of seropositive individuals will have a negative N-antibody test at 195 days after the start of  
271 antibody decay; by contrast 100% are predicted to have a positive test to the trimeric S-  
272 antibody at the same time point.

273

274 The half-life of the N-antibody was significantly shorter than that of the trimeric S- and RBD-  
275 antibodies with a mean of 81 and 84 days, respectively. These findings have immediate  
276 implications for SARS-CoV-2 diagnostic testing particularly widely used serological tests that  
277 target N-antibodies. Our findings are consistent with published estimates of SARS-CoV and  
278 MERS-CoV humoral dynamics following mild-to-moderate infection.[9,20,22,26–28]

279

280 To date, no studies have comprehensively characterized the nature and duration of  
281 antibody responses to different SARS-CoV-2 epitopes, stratified by demographic factors and  
282 comorbidities. Long *et al* recently reported waning of SARS-CoV-2-specific IgG and  
283 neutralizing antibodies within 2-3 months following infection, decreasing by up to 76% and  
284 81%, respectively. This was more pronounced following clinical disease, although 40% of  
285 asymptomatic patients (compared to 13% symptomatic) became seronegative in this early  
286 convalescent period.[10] Detailed antibody kinetics, however, were not reported.  
287 Asymptomatic or mildly symptomatic cohorts have also been largely overlooked, with most  
288 studies conducted on hospitalized patients. Our study addresses these gaps, facilitated by  
289 the MSD assay which enabled evaluation of absolute antibody titers to three major SARS-  
290 CoV-2 epitopes in parallel. Those participants over 50 years of age and BAME participants

291 had higher initial antibody titers to N, S and RBD antigens. Although elderly patients are  
292 known to produce lower antibody responses to infection and vaccination,[29,30] increased  
293 disease severity in this group may have influenced antibody response. The association  
294 between ethnicity and antibody titers needs to be further explored.

295

296 None of the seropositive healthcare workers identified in this study required hospitalization.  
297 This is important, given that only 1% of 20-30 year olds and 18% of >80 year olds diagnosed  
298 COVID-19 cases are hospitalized, making our study population representative of the  
299 majority of community SARS-CoV-2 infections.[31] Severe disease has been associated with  
300 higher antibody titers and a longer duration of antibody response following both SARS and  
301 MERS.[9,20,21,32] When long-term follow-up studies of hospitalized SARS-CoV-2 patients  
302 are published, we therefore expect the half-life estimates to increase due to the increased  
303 severity of initial disease.

304

305 Viral neutralization assays remain the gold-standard *in vitro* correlate of protection and the  
306 lack of formal neutralization tests is a limitation of the study. ACE-2 receptor competition  
307 assays such as the MSD competitive binding assay have been shown to correlate well with  
308 formal viral neutralization assays[33]. The ACE-2 competition assay used in this study had a  
309 strong positive linear correlation with both S-antibody titers ( $R^2=0.72$ ) and RBD-antibody  
310 titers ( $R^2=0.77$ ). Therefore, our observed decline in S-antibody titers is likely to be  
311 proportional to declines in functional receptor blocking activity.

312

313 Our negative exponential model of antibody decay assumed a constant rate of decay over  
314 time. Negative exponential models of antibody decay are frequently used to model antibody



315 decay,[34,35] and this assumption was supported by plotting the rate of decay over time  
316 **(Supplementary Materials Fig.2)**. Nevertheless, increased serial antibody measurements  
317 will enable us to test this hypothesis further and refine our half-life predictions accordingly.  
318 Whilst the severity of infection among our study participants is likely to be representative of  
319 community infection, our findings may be biased to healthcare workers. Moreover, a  
320 population of paediatric healthcare workers are more likely to be repeatedly exposed to  
321 seasonal CoV infection. We do not know to what extent this influences our measurements  
322 of the SARS-CoV-2 humoral response or our estimates of antibody decay. Recent studies  
323 have hypothesized that previous exposure to CoVs may confer some protection against  
324 SARS-CoV-2[36] and may need to be accounted for when modelling transmission or  
325 longevity dynamics.[37] Results are conflicting, however, and it remains unclear if any cross-  
326 reactivity is T-cell or antibody mediated.[38–41] Stratifying the SARS-CoV-2 humoral  
327 response by seasonal coronavirus titers will enable this potential bias to be understood.

328

329 Although all study participants had clinical symptoms that they attributed to COVID-19  
330 **(Supplementary Table 1)** and at least one positive serological test, not all participants were  
331 diagnosed by PCR testing. Despite our formal performance evaluation of the MSD assay  
332 demonstrating a high sensitivity and specificity, it is theoretically possible that some of our  
333 paired positive samples arose from repeated false positive tests. Our estimates of the time-  
334 to-negative test for 50% of the population ( $t_{neg50}$ ) and the time-to-undetectable ( $t_{u50}$ ) are  
335 also dependent on the negative thresholds and lower limits of detection of the assay,  
336 respectively. Serological assays with very high positive-negative discrimination and low  
337 limits of detection will therefore detect antibody for longer. We repeated our analysis of N-

338 antibody on the EDI<sup>TM</sup> assay which estimated an even lower  $t_{neg50}$  of 67 days (95% CI 47-91),  
339 suggesting that our estimates of the half-life of the N-antibody are robust between assays.

340

341 Protective immunity is a complex dynamic of host, environmental and viral factors. It can be  
342 difficult to disentangle the mechanisms underlying re-infection, including the role played by  
343 viral escape (i.e. genetic drift) versus weak or waning immune responses.[42] To date, no  
344 definitive quantitative or qualitative correlate-of-protection has been identified for SARS-  
345 CoV-2 infection, disease or onward transmission.[9,43] This hampers our understanding of  
346 the functional and clinical significance of waning antibodies (particularly N-antibody)  
347 observed in this study. Recent findings from animal studies support the role of neutralizing  
348 antibodies as a correlate of immunity.[11,16,17] Similarly, a controlled human infection  
349 model of seasonal CoV 229E demonstrated waning of IgG-specific antibodies within 1 year,  
350 with subsequent reinfection of 6/9 individuals upon homologous viral challenge, albeit  
351 without clinical symptoms.[44] If reinfection does occur, severity of disease may therefore  
352 be attenuated, unless antibody-dependent disease enhancement by sub-neutralising  
353 antibody titers occurs.[42]

354

355 Furthermore, robust memory T-cell responses to specific SARS-CoV-2 peptides are elicited  
356 following infection; this also includes seronegative and/or pauci-symptomatic  
357 individuals.[15,40,41] As such, anamnestic cell-mediated immune responses may prevent  
358 clinically significant re-infection, in keeping with other viral pathogens such as measles and  
359 hepatitis A. Prospective evaluation of re-infection alongside T-cell, B-cell and mucosal IgA  
360 dynamics should therefore be an urgent priority. The long-term data generated by the Co-

361 STARS study during the predicted future waves of the pandemic will be particularly  
362 informative.

363

364 In summary, this prospective cohort study of 137 longitudinally collected serological  
365 samples from 67 healthcare workers at Great Ormond Street Hospital has estimated that, in  
366 contrast to S-antibody, the half-life of IgG to N-antigen is only 52 days. Fifty percent will  
367 therefore have negative N-antibodies 195 days after the start of antibody decay. This has  
368 significant implications for sero-prevalence surveys that are based on the measurement of  
369 IgG to N-antigen in order to understand the spread of SARS-CoV-2 within the population.  
370 Data of this kind directly informs public health policy and responses to future waves of the  
371 pandemic. Policymakers relying on these estimates at a population level may need to be  
372 cautious, allowing for possible underestimation of the true prevalence of previous SARS-  
373 CoV-2 infection and/or exposure. Conversely, the trimeric S-antibody correlated strongly  
374 with ACE-2 receptor blockade and persisted longer with 50% of seropositive participants  
375 estimated to still test positive at 532 days ( $t_{1/2}$  81 days). This is reassuring for post-vaccine  
376 licensure surveillance studies, given that current vaccine candidates are based on  
377 recombinant or fragments of S-protein.[45] Our upper bound for any detectable antibodies  
378 (S, RBD or N) following mild-to-moderate infection was 1495 days.

379

### 380 **Acknowledgements**

381 We would like to dedicate this article to the staff members who died of COVID-19 at Great  
382 Ormond Street Hospital during the first wave of the pandemic. We would also like to thank  
383 all the staff at Great Ormond Street Hospital who have taken part in the study. In addition,  
384 we are very grateful for all the hard work undertaken by the Great Ormond Street  
385 laboratory staff and the staff in the immunology laboratories both in the Camelia Botnar

386 Laboratory and the Great Ormond Street Institute of Child Health who ensured that all the  
387 PCR tests and serological assays were completed in a timely manner. Finally, we would like  
388 to acknowledge the support of the Great Ormond Street Hospital Research & Development,  
389 Governance, Finance, Management, Estates, Operations and Communications departments.  
390

#### 391 **Author contributions**

392 The first draft of the manuscript was prepared by: LG, AS, AT, TL, JH, RT, MH, TB, MJ, HW,  
393 ER, AM, CC, JB, KG, DG

394

395 The study was designed and implemented by:

396 LG, AS, AT, TL, JH, RT, MH, TB, MJ, HW, ER, AM, CC, JB, KG, DG & the Co-Stars Team.

397

398 Testing for SARS-CoV-2 RNA and antibody was conducted by: LG, AS, AT, TL, JH, RT, MH, TB,  
399 MJ, HW, ER, AM, CC, JB, KG, DG

400

401

#### 402 **Funding statement**

403 In line with UK government policy GOSH NHS Trust made the first diagnostic test available  
404 to all staff members in the hospital either as part of the study or outside the study. The  
405 GOSH charity provided the funding for follow up testing over the first 6 months of the study.  
406 LG declares funding from Wellcome Post-Doctoral Research Fellowship (201470/Z/16/Z). AS  
407 declares funding from Wellcome Trust Global Health Clinical Ph.D. Fellowship  
408 (220565/Z/20/Z). GOSH NHS Trust hosts a NIHR Funded Biomedical Research Centre which  
409 provides infrastructure support permitting translational research.

410

411

412 **Competing interests' statement**

413 All authors have completed the ICMJE uniform disclosure form at  
414 [http://www.icmje.org/coi\\_disclosure.pdf](http://www.icmje.org/coi_disclosure.pdf) and declare: no support from any organisation for  
415 the submitted work; no financial relationships with any organisations that might have an  
416 interest in the submitted work in the previous three years, no other relationships or  
417 activities that could appear to have influenced the submitted work.

418

419 **Exclusive License**

420 The Corresponding Author has the right to grant on behalf of all authors and does grant on  
421 behalf of all authors, a worldwide licence  
422 ([http://www.bmj.com/sites/default/files/BMJ%20Author%20Licence%20March%202013.do](http://www.bmj.com/sites/default/files/BMJ%20Author%20Licence%20March%202013.doc)  
423 c) to the Publishers and its licensees in perpetuity, in all forms, formats and media (whether  
424 known now or created in the future), to i) publish, reproduce, distribute, display and store  
425 the Contribution, ii) translate the Contribution into other languages, create adaptations,  
426 reprints, include within collections and create summaries, extracts and/or, abstracts of the  
427 Contribution and convert or allow conversion into any format including without limitation  
428 audio, iii) create any other derivative work(s) based in whole or part on the on the  
429 Contribution, iv) to exploit all subsidiary rights to exploit all subsidiary rights that currently  
430 exist or as may exist in the future in the Contribution, v) the inclusion of electronic links  
431 from the Contribution to third party material where-ever it may be located; and, vi) licence  
432 any third party to do any or all of the above. All research articles will be made available on  
433 an open access basis (with authors being asked to pay an open access fee—see  
434 [http://www.bmj.com/about-bmj/resources-authors/forms-policies-and-](http://www.bmj.com/about-bmj/resources-authors/forms-policies-and-checklists/copyright-open-access-and-permission-reuse)  
435 [checklists/copyright-open-access-and-permission-reuse](http://www.bmj.com/about-bmj/resources-authors/forms-policies-and-checklists/copyright-open-access-and-permission-reuse)). The terms of such open access  
436 shall be governed by a Creative Commons licence—details as to which Creative Commons  
437 licence will apply to the research article are set out in our worldwide licence referred to  
438 above.

439

440 **Transparency Statement**

441 The lead author affirms that the manuscript is an honest, accurate, and transparent account  
442 of the study being reported; that no important aspects of the study have been omitted; and

443 that any discrepancies from the study as planned (and, if relevant, registered) have been  
444 explained.

445

#### 446 **References**

- 447 1 Guan W, Ni Z, Hu Y, *et al.* Clinical Characteristics of Coronavirus Disease 2019 in China.  
448 *New England Journal of Medicine* 2020;**382**:1708–20. doi:10.1056/NEJMoa2002032
- 449 2 Johns Hopkins University. Coronavirus COVID-19 Global Cases by the Center for Systems  
450 Science and Engineering (CSSE) at Johns Hopkins University (JHU).
- 451 3 Zhu N, Zhang D, Wang W, *et al.* A novel coronavirus from patients with pneumonia in  
452 China, 2019. *New England Journal of Medicine* 2020;**382**:727–33.  
453 doi:10.1056/NEJMoa2001017
- 454 4 Immune responses and immunity to SARS-CoV-2. <https://www.ecdc.europa.eu/en/covid-19/latest-evidence/immune-responses> (accessed 4 Jul 2020).
- 456 5 Ou X, Liu Y, Lei X, *et al.* Characterization of spike glycoprotein of SARS-CoV-2 on virus  
457 entry and its immune cross-reactivity with SARS-CoV. *Nature Communications*  
458 2020;**11**:1–12. doi:10.1038/s41467-020-15562-9
- 459 6 Walls AC, Park Y-J, Tortorici MA, *et al.* Structure, Function, and Antigenicity of the SARS-  
460 CoV-2 Spike Glycoprotein. *Cell* 2020;**181**:281-292.e6. doi:10.1016/j.cell.2020.02.058
- 461 7 Cong Y, Ulasli M, Schepers H, *et al.* Nucleocapsid Protein Recruitment to Replication-  
462 Transcription Complexes Plays a Crucial Role in Coronaviral Life Cycle. *Journal of*  
463 *Virology* 2019;**94**. doi:10.1128/jvi.01925-19
- 464 8 Wang X, Guo X, Prof A, *et al.* Neutralizing Antibodies Responses to SARS-CoV-2 in COVID-  
465 19 Inpatients and Convalescent Patients. *medRxiv* 2020;:2020.04.15.20065623.  
466 doi:10.1101/2020.04.15.20065623
- 467 9 Huang AT, Garcia-Carreras B, Hitchings MDT, *et al.* A systematic review of antibody  
468 mediated immunity to coronaviruses: antibody kinetics, correlates of protection, and  
469 association of antibody responses with severity of disease. *medRxiv*  
470 2020;:2020.04.14.20065771. doi:10.1101/2020.04.14.20065771
- 471 10 Long Q-X, Tang X-J, Shi Q-L, *et al.* Clinical and immunological assessment of  
472 asymptomatic SARS-CoV-2 infections. *Nature Medicine* 2020;:1–5. doi:10.1038/s41591-  
473 020-0965-6
- 474 11 Rogers TF, Zhao F, Huang D, *et al.* Isolation of potent SARS-CoV-2 neutralizing antibodies  
475 and protection from disease in a small animal model. *Science (New York, NY)* Published  
476 Online First: 15 June 2020. doi:10.1126/science.abc7520

- 477 12 Mehul Suthar AS, Zimmerman MG, Kauffman RC, *et al.* Rapid Generation of Neutralizing  
478 Antibody Responses in COVID-19 Patients. *Cell Reports Medicine* 2020;**1**:100040.  
479 doi:10.1016/j.xcrm.2020.100040
- 480 13 Jiang S, Hillyer C, Du L. Neutralizing Antibodies against SARS-CoV-2 and Other Human  
481 Coronaviruses. *Trends in Immunology*. 2020;**41**:355–9. doi:10.1016/j.it.2020.03.007
- 482 14 Ni L, Ye F, Cheng M-L, *et al.* Detection of SARS-CoV-2-Specific Humoral and Cellular  
483 Immunity in COVID-19 Convalescent Individuals Highlights d SARS-CoV-2-specific  
484 antibodies are detected in COVID-19 convalescent subjects || Detection of SARS-CoV-2-  
485 Specific Humoral and Cellular Immunity in COVID-19 Convalescent Individuals. *Immunity*  
486 2020;**52**:971-977.e3. doi:10.1016/j.immuni.2020.04.023
- 487 15 Sekine T, Perez-Potti A, Rivera-Ballesteros O, *et al.* Robust T cell immunity in  
488 convalescent individuals with asymptomatic or mild COVID-19. *bioRxiv*  
489 2020;:2020.06.29.174888. doi:10.1101/2020.06.29.174888
- 490 16 Munster V, Feldmann F, Williamson B, *et al.* Respiratory disease and virus shedding in  
491 rhesus macaques inoculated with SARS-CoV-2. *bioRxiv* 2020;:2020.03.21.001628.  
492 doi:10.1101/2020.03.21.001628
- 493 17 Bao L, Deng W, Gao H, *et al.* Reinfection could not occur in SARS-CoV-2 infected rhesus  
494 macaques. *bioRxiv* 2020;:1–20. doi:10.1101/2020.03.13.990226
- 495 18 Pollán M, Pérez-Gómez B, Pastor-Barriuso R, *et al.* Prevalence of SARS-CoV-2 in Spain  
496 (ENE-COVID): a nationwide, population-based seroepidemiological study. *The Lancet*  
497 2020;:S0140673620314835. doi:10.1016/S0140-6736(20)31483-5
- 498 19 Sero-surveillance of COVID-19. GOV.UK.  
499 [https://www.gov.uk/government/publications/national-covid-19-surveillance-](https://www.gov.uk/government/publications/national-covid-19-surveillance-reports/sero-surveillance-of-covid-19)  
500 [reports/sero-surveillance-of-covid-19](https://www.gov.uk/government/publications/national-covid-19-surveillance-reports/sero-surveillance-of-covid-19) (accessed 8 Jul 2020).
- 501 20 Ho MS, Chen WJ, Chen HY, *et al.* Neutralizing antibody response and SARS severity.  
502 *Emerging Infectious Diseases* 2005;**11**:1730–7. doi:10.3201/eid1111.040659
- 503 21 Cao W-C, Liu W, Zhang P-H, *et al.* Disappearance of Antibodies to SARS-Associated  
504 Coronavirus after Recovery. *New England Journal of Medicine* 2007;**357**:1162–3.  
505 doi:10.1056/NEJMc070348
- 506 22 Choe P, Perera R, Park W, *et al.* MERS-CoV antibody responses 1 year after symptom  
507 onset, South Korea, 2015. *ncbi.nlm.nih.gov*
- 508 23 Public Health England. Chapter 6: Contraindications and special considerations. In: *The*  
509 *Green Book: Immunisation against infectious disease*. 2017.
- 510 24 Brown JR, Atkinson L, Shah D, *et al.* Validation of an extraction-free RT-PCR protocol for  
511 detection of SARS-CoV2 RNA. *medRxiv* 2020;:2020.04.29.20085910.  
512 doi:10.1101/2020.04.29.20085910

- 513 25 Hou H, Wang T, Zhang B, *et al.* Detection of IgM and IgG antibodies in patients with  
514 coronavirus disease 2019. *Clinical and Translational Immunology* 2020;**9**.  
515 doi:10.1002/cti2.1136
- 516 26 Alshukairi AN, Khalid I, Ahmed WA, *et al.* Antibody response and disease severity in  
517 healthcare worker MERS survivors. *Emerging Infectious Diseases* 2016;**22**:1113–5.  
518 doi:10.3201/eid2206.160010
- 519 27 Cao WC, Liu W, Zhang PH, *et al.* Disappearance of antibodies to SARS-associated  
520 coronavirus after recovery [18]. *New England Journal of Medicine*. 2007;**357**:1162–3.  
521 doi:10.1056/NEJMc070348
- 522 28 Wu LP, Wang NC, Chang YH, *et al.* Duration of antibody responses after severe acute  
523 respiratory syndrome. *Emerging Infectious Diseases* 2007;**13**:1562–4.  
524 doi:10.3201/eid1310.070576
- 525 29 Siegrist CA, Aspinall R. B-cell responses to vaccination at the extremes of age. *Nature*  
526 *Reviews Immunology*. 2009;**9**:185–94. doi:10.1038/nri2508
- 527 30 Boraschi D, Italiani P. Immunosenescence and vaccine failure in the elderly: Strategies  
528 for improving response. *Immunology Letters* 2014;**162**:346–53.  
529 doi:10.1016/j.imlet.2014.06.006
- 530 31 Verity R, Okell LC, Dorigatti I, *et al.* Estimates of the severity of coronavirus disease  
531 2019: a model-based analysis. *The Lancet Infectious diseases* 2020;**0**.  
532 doi:10.1016/S1473-3099(20)30243-7
- 533 32 Payne DC, Iblan I, Rha B, *et al.* Persistence of antibodies against middle east respiratory  
534 syndrome coronavirus. *Emerging Infectious Diseases* 2016;**22**:1824–6.  
535 doi:10.3201/eid2210.160706
- 536 33 A SARS-CoV-2 surrogate virus neutralization test (sVNT) based on antibody-mediated  
537 blockage of ACE2-spike (RBD) protein-protein interaction. Published Online First: 23  
538 April 2020. doi:10.21203/rs.3.rs-24574/v1
- 539 34 Antia A, Ahmed H, Handel A, *et al.* Heterogeneity and longevity of antibody memory to  
540 viruses and vaccines. *PLOS Biology* 2018;**16**:e2006601.  
541 doi:10.1371/journal.pbio.2006601
- 542 35 Balelli I, Pasin C, Prague M, *et al.* A model for establishment, maintenance and  
543 reactivation of the immune response after vaccination against Ebola virus. *Journal of*  
544 *Theoretical Biology* 2020;**495**:110254. doi:10.1016/j.jtbi.2020.110254
- 545 36 Wang C, Li W, Drabek D, *et al.* A human monoclonal antibody blocking SARS-CoV-2  
546 infection. *Nature Communications* 2020;**11**:1–6. doi:10.1038/s41467-020-16256-y
- 547 37 Kissler SM, Tedijanto C, Goldstein E, *et al.* Projecting the transmission dynamics of SARS-  
548 CoV-2 through the postpandemic period. *Science* 2020;:eabb5793.  
549 doi:10.1126/science.abb5793



- 550 38 Ng K, Faulkner N, Cornish G, *et al.* Pre-existing and de novo humoral immunity to SARS-  
551 CoV-2 in humans. *bioRxiv* 2020;:2020.05.14.095414. doi:10.1101/2020.05.14.095414
- 552 39 Lv H, Wu NC, Tak-Yin Tsang O, *et al.* Cross-reactive Antibody Response between SARS-  
553 CoV-2 and SARS-CoV Infections II Cross-reactive Antibody Response between SARS-CoV-  
554 2 and SARS-CoV Infections. *CellReports* 2020;31:107725.  
555 doi:10.1016/j.celrep.2020.107725
- 556 40 Dong T, Peng Y, Mentzer AJ, *et al.* Broad and strong memory CD4+ and CD8+ T cells  
557 induced by SARS-CoV-2 in UK convalescent COVID-19 patients. *bioRxiv*  
558 2020;:2020.06.05.134551. doi:10.1101/2020.06.05.134551
- 559 41 Grifoni A, Weiskopf D, Ramirez SI, *et al.* Targets of T Cell Responses to SARS-CoV-2  
560 Coronavirus in Humans with COVID-19 Disease and Unexposed Individuals. *Cell*  
561 2020;181:1489. doi:10.1016/j.cell.2020.05.015
- 562 42 Kellam P, Barclay W. The dynamics of humoral immune responses following SARS-CoV-2  
563 infection and the potential for reinfection. *Journal of General Virology* 2020;:jgv001439.  
564 doi:10.1099/jgv.0.001439
- 565 43 Melgaço JG, Azamor T, Ano Bom APD. Protective immunity after COVID-19 has been  
566 questioned: What can we do without SARS-CoV-2-IgG detection? *Cellular Immunology*.  
567 2020;353:104114. doi:10.1016/j.cellimm.2020.104114
- 568 44 Callow' KA, Parry2 HF, Sergeant1 M, *et al.* The time course of the immune response to  
569 experimental coronavirus infection of man The change in the concentration of total IgA  
570 and protein in nasal. 1990.
- 571 45 Callaway E. The race for coronavirus vaccines: a graphical guide. *Nature* 2020;580:576–  
572 7. doi:10.1038/d41586-020-01221-y

573

## 574 **Figure Legends**

575

### 576 **Figure 1**

577 **Bayesian log-linear model fits for the decay of the nucleoprotein (N) antibody, the trimeric**  
578 **spike (S) antibody and the receptor binding domain (RBD) antibody from 21 days**  
579 **following symptom onset. Confidence limits on the slope without individual random**  
580 **effects are plotted in dark grey, with individual effects light grey. Red dotted line**  
581 **represents the limit of seropositivity**

582

### 583 **Figure 2**

584 **Posterior probability for the distribution of the half-life taken from the start of antibody**  
585 **decay at 21 days for the nucleoprotein (N) (CoV.2.N green) antibody, the spike (S) protein**  
586 **antibody (Co.V.2.S red) and the RBD antibody (CoV.2.RBD blue).**

587

588 **Figure 3**

589 **A) Time-to-negativity curve by the MSD assay for the nucleoprotein (N) antibody (green),**  
590 **the spike (S) antibody (red) and the receptor binding domain (RBD) antibody (blue).**

591 **B) Time-to-negativity curve by the EDI assay for the nucleoprotein (N) antibody (green).**

592 **Note: The EDI assay only measures the N-antibody.**

593

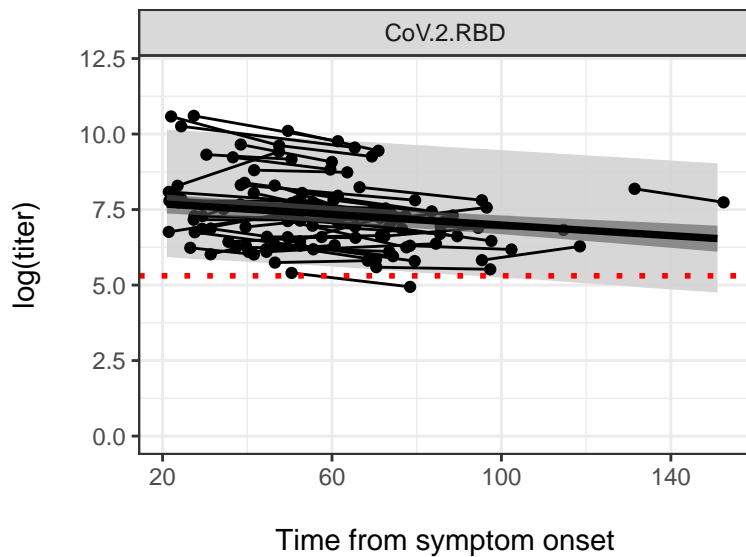
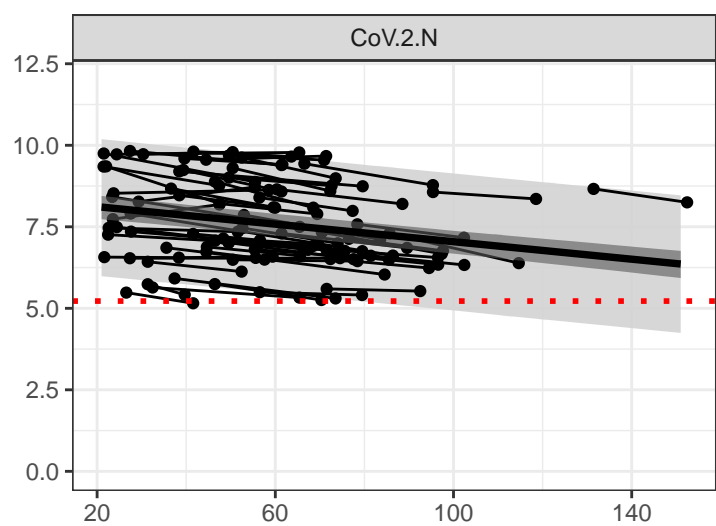
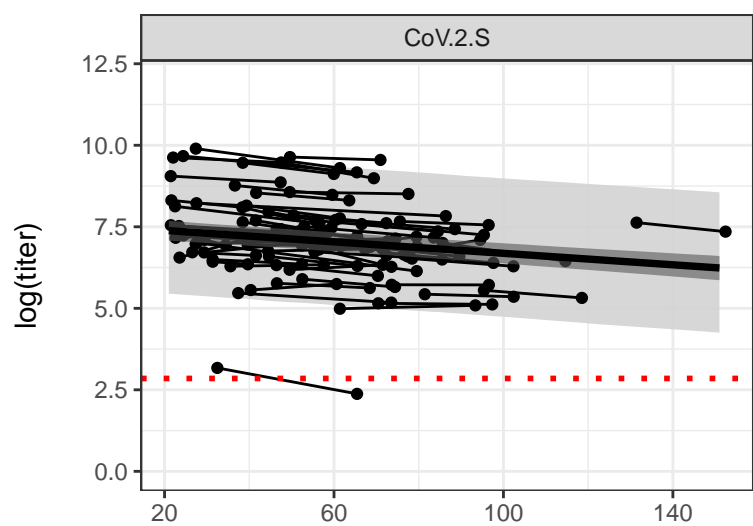
594 **Figure 4**

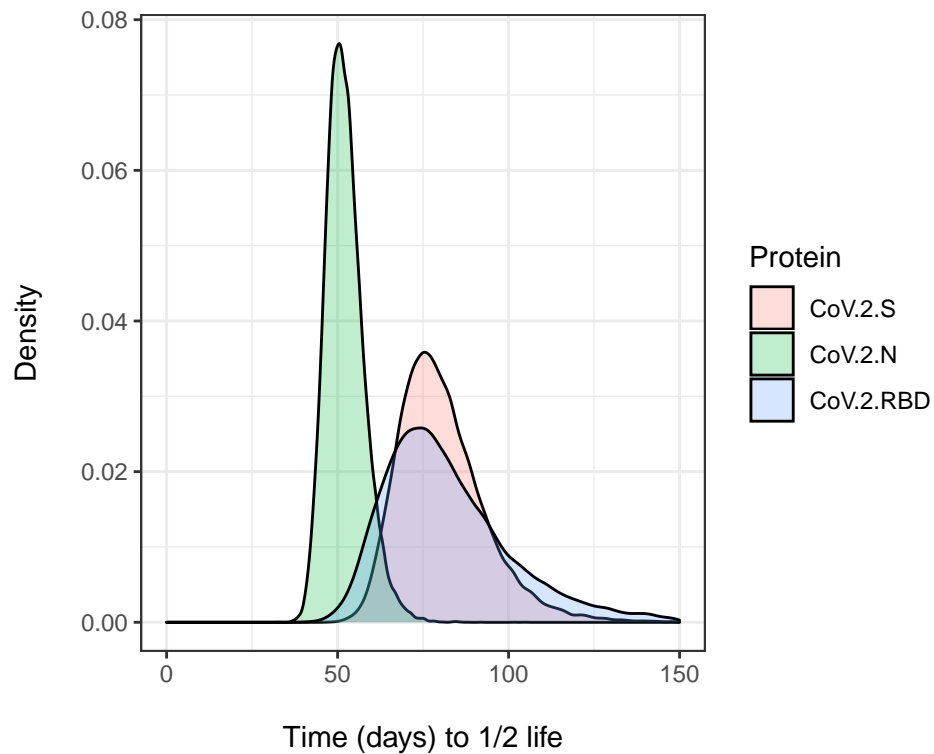
595 **The correlation of Spike and RBD antibody titers with ACE-2 receptor blocking.**

596

597

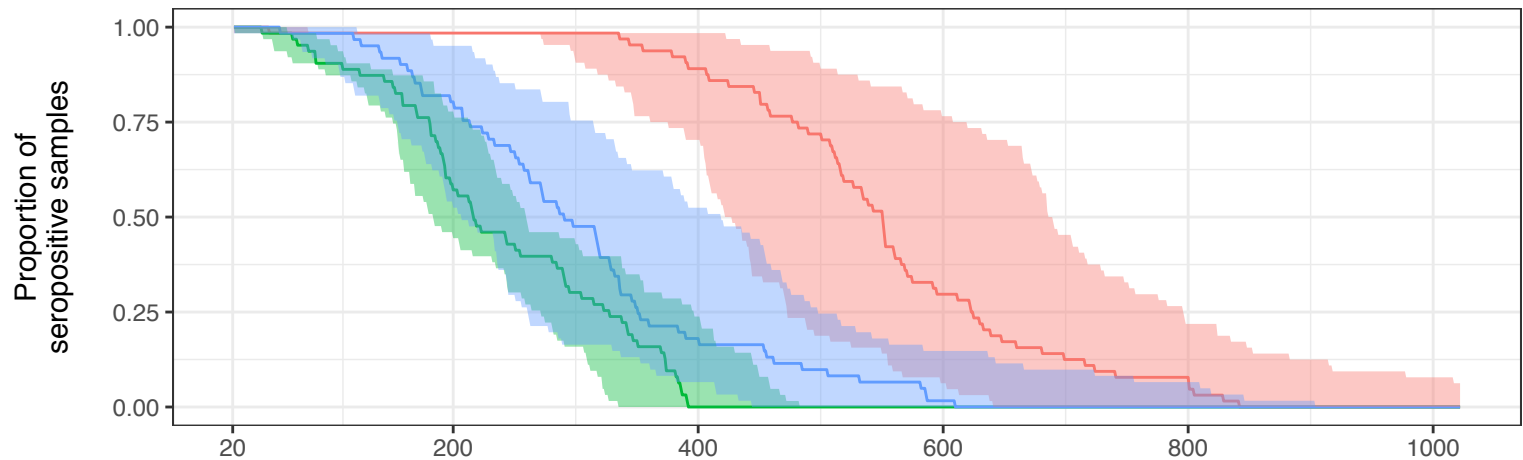
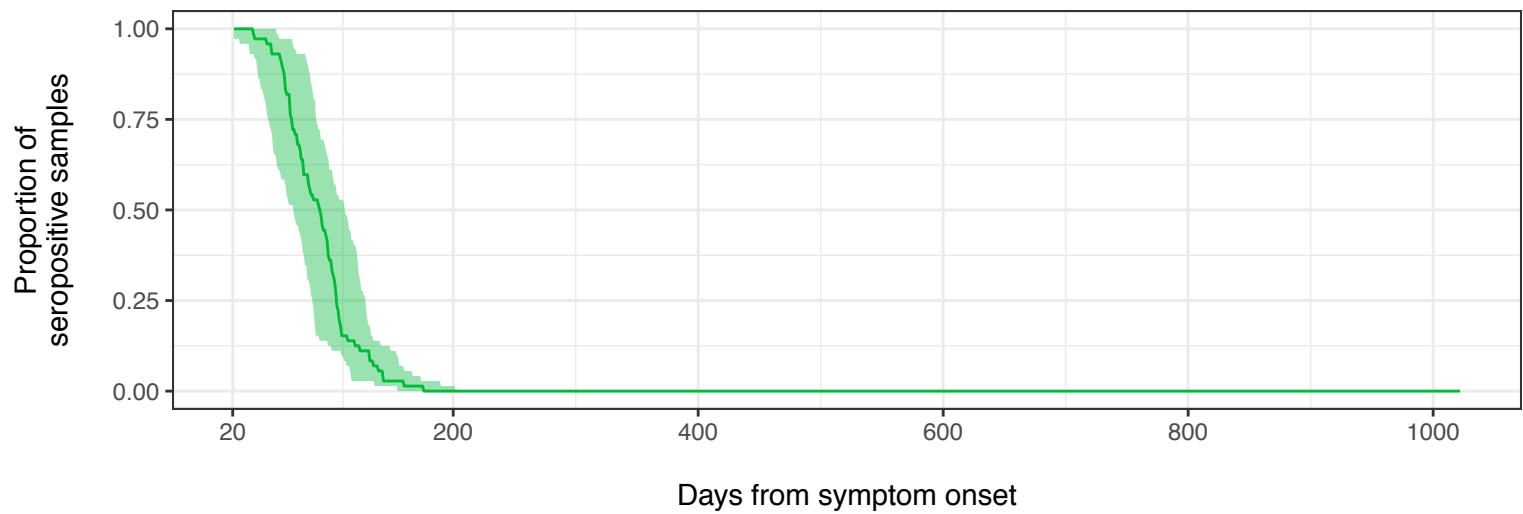
598



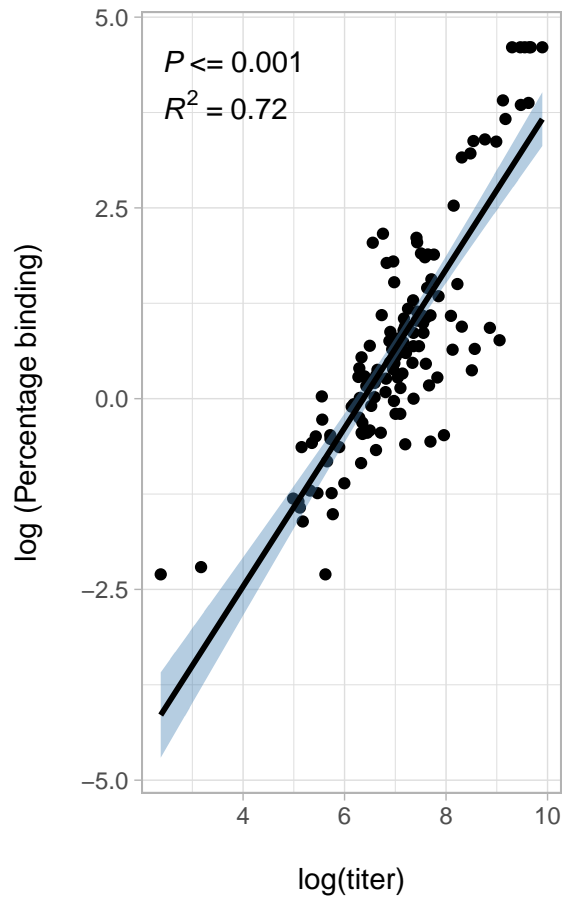


**a**

CoV.2.S CoV.2.N CoV.2.RBD

**b**

CoV.2.S



CoV.2.RBD

