

## 1 **Changes in SARS-CoV-2 Antibody Responses Impact the Estimates of Infections in Population-Based** 2 **Seroprevalence Studies**

3 Craig Fenwick<sup>†1</sup>, Antony Croxatto<sup>†2</sup>, Alix T. Coste<sup>†2</sup>, Florence Pojer<sup>†5</sup>, Cyril André<sup>1</sup>, Céline Pellaton<sup>1</sup>, Alex  
4 Farina<sup>1</sup>, Jérémy Campos<sup>1</sup>, David Hacker<sup>5</sup>, Kelvin Lau<sup>5</sup>, Berend-Jan Bosch<sup>4</sup>, Semira Gonseth Nussle<sup>7</sup>,  
5 Murielle Bochud<sup>7</sup>, Valerie D'Acremont<sup>7</sup>, Didier Trono<sup>6\*</sup>, Gilbert Greub<sup>2,3\*</sup>, Giuseppe Pantaleo<sup>1,8\*</sup>

6 1- Service of Immunology and Allergy, Department of Medicine, Lausanne University  
7 Hospital and University of Lausanne, Lausanne, Switzerland

8 2- Institute of Microbiology, Lausanne University Hospital and University of Lausanne,  
9 Lausanne, Switzerland

10 3- Service of Infectious Diseases, Lausanne University Hospital, Switzerland

11 4- Virology Section, Infectious Diseases and Immunology Division, Department of  
12 Biomolecular Health Sciences, Faculty of Veterinary Medicine, Utrecht University,  
13 Utrecht, the Netherlands.

14 5- Protein Production and Structure Core Facility, School of Life Sciences, École  
15 Polytechnique Fédérale de Lausanne (EPFL), Lausanne, Switzerland.

16 6- School of Life Sciences, Ecole Polytechnique Fédérale de Lausanne, Lausanne,  
17 Switzerland.

18 7- Centre for Primary Care and Public Health, University of Lausanne, Lausanne,  
19 Switzerland.

20 8- Swiss Vaccine Research Institute, Lausanne University Hospital and University of  
21 Lausanne, Switzerland.

22  
23 Key words: SARS-CoV-2, serology, S protein trimer

24  
25 Running title: Anti-S and anti-N protein antibody responses

26  
27  
28 †Authors contributing equally

29  
30 \*Corresponding authors: Prof. Giuseppe Pantaleo  
31 Service of Immunology and Allergy  
32 Lausanne University Hospital  
33 1011 Lausanne, Switzerland  
34 [giuseppe.pantaleo@chuv.ch](mailto:giuseppe.pantaleo@chuv.ch)

35  
36  
37 Prof. Gilbert Greub  
38 Service of Microbiology  
39 Lausanne University Hospital  
40 1011 Lausanne, Switzerland  
41 [gilbert.greub@chuv.ch](mailto:gilbert.greub@chuv.ch)

42  
43  
44 Prof. Didier Trono  
45 School of Life Sciences  
46 Ecole Polytechnique Fédérale de Lausanne  
47 Lausanne, Switzerland  
48 [didier.trono@epfl.ch](mailto:didier.trono@epfl.ch)

NOTE: This preprint reports new research that has not been certified by peer review and should not be used to guide clinical practice.

49 **Abstract**

50

51 We have determined SARS-CoV-2-specific antibody responses in a cohort of 96 individuals  
52 with acute infection and in 578 individuals enrolled in a seroprevalence population study in  
53 Switzerland including three groups, i.e. subjects with previous RT-PCR confirmed SARS-CoV-2  
54 infections (n=90), 'positive patient contacts' (n=177) and 'random selected subjects' (n=311).  
55 SARS-CoV-2 antibody responses specific to the Spike (S), in the monomeric and native trimeric  
56 forms, and/or the nucleocapsid (N) proteins were equally sensitive in the acute infection  
57 phase. Interestingly, as compared to anti-S antibody responses, those against the N protein  
58 appear to wane in the post-infection and substantially underestimated the proportion of  
59 SARS-CoV-2 infections in the groups of 'patient positive contacts', i.e. 10.9 to 32.2% reduction  
60 and in the 'random selected' general population, i.e. up to 45% reduction. The overall  
61 reduction in seroprevalence targeting only anti-N IgG antibodies for the total cohort ranged  
62 from 9.4 to 31%. Of note, the use of the S protein in its native trimer form was more sensitive  
63 as compared to monomeric S proteins.

64 These results indicate that the assessment of anti-S IgG antibody responses against the  
65 native trimeric S protein should be implemented to estimate SARS-CoV-2 infections in  
66 population-based seroprevalence studies.

67

68

69

70

71

72

73

74

75

76

77

78

79

80

81

82

## 83 Introduction

84

85 The SARS-CoV-2 is currently causing a devastating pandemic with more than 12.7 million  
86 documented infections and more than 566'000 deaths, according to the latest WHO situation  
87 report from July 13th, 2020.<sup>1</sup> However, the true incidence of the infection is largely  
88 underestimated, since in most countries asymptomatic and paucisymptomatic people are  
89 tested only if they came in direct contact with sick patients or belong to at-risk subgroups.  
90 Therefore, it is a public health urgency to perform large-scale population-based studies in  
91 order to determine rates of seroprevalence during the first wave of the SARS-CoV-2 pandemic  
92 and to implement continued surveillance with the combined use of viral detection tests such  
93 as RT-PCR and serological testing. Seroprevalence studies are also instrumental to determine  
94 the proportion of individuals with potential protective immunity.<sup>2-4</sup>

95

96 SARS-CoV-2 antibody responses are characterized through the detection of IgG, IgA, and/or  
97 IgM. Detecting both IgA and IgG may increase sensitivity, particularly for people experiencing  
98 paucisymptomatic or asymptomatic infection. However, IgM does not seem to be of great  
99 benefit to overall sensitivity, since IgM appearance coincides with IgG antibodies during the  
100 early phase of infection, i.e. less than 15 days after the onset of symptoms and may increase  
101 the likelihood of false positive results due to cross-reactivity.<sup>5,6</sup>

102

103 SARS-CoV-2-specific antibody responses target two proteins: the nucleocapsid protein (N) and  
104 the Spike protein (S). It has been suggested that IgG antibodies targeting the S protein are  
105 more specific while those targeting at N may be more sensitive, particularly in the early phase  
106 of infection.<sup>7</sup>

107

108 However, the increased sensitivity of anti-N antibody response might be at the expense of  
109 specificity, given the relatively high protein sequence similarity of the N protein of SARS-CoV-  
110 2 with nucleocapsid proteins of other Coronaviridae and other viruses. Moreover, during the  
111 SARS outbreak (2002-2004), Chia et al observed that anti-N antibodies waned earlier than anti-

112 S antibodies.<sup>8</sup> Thus, anti-S antibody response might be more specific and circumvent a  
113 possible decrease of antibodies, previously observed with N protein of the SARS virus.  
114 Furthermore, it is still unknown the durability of SARS-CoV-2 antibody response. Previous  
115 studies have shown early disappearance of antibodies to SARS-associated coronavirus after  
116 recovery<sup>9</sup> while other studies have shown longer durability of the antibody response.<sup>10-13</sup>

117

118 In the present study we have investigated SARS-CoV-2 antibody responses, both IgA and IgG  
119 in a cohort of 96 patients with moderate to severe symptoms during the first 33 days of the  
120 acute phase of infection and in a cohort of 578 subjects mostly paucisymptomatic and/or  
121 asymptomatic enrolled in a population-based seroprevalence study of the Vaud Canton in  
122 Switzerland. Antibody responses targeting either the N and/or the S proteins were  
123 investigated. Anti-S antibody responses were determined against monomeric moieties of the  
124 S1 protein and/or the native S trimeric form. Antibody responses against the S and N proteins  
125 were equally sensitive during the acute phase of infection while anti-N antibody responses  
126 waned in the post-infection phase. Importantly, the use of the trimeric as compared to the  
127 monomeric form of the S protein is associated with greater sensitivity in the detection of SARS-  
128 CoV-2 IgG antibody response in both the acute and post-infection phases.

129

130 Taken together, these results indicate that antibody responses against the native trimeric S  
131 protein should be used as a reference in population-based seroprevalence studies to provide  
132 more accurate estimates of SARS-CoV-2 infections in the general population.

133

134

135

136

137

138

139

## 140 Results

### 141 Antibody responses against the native trimeric versus the monomeric S protein

142 A stabilized trimer of the full-length S protein, encompassing both its S1 and S2 moieties, was  
143 coupled to beads for capturing antibodies in a new Luminex assay. We hypothesized that  
144 conformational epitopes would be preserved in the trimeric S protein, providing a greater  
145 sensitivity to detect IgG antibodies (**Supplementary Figure 1A and B**).<sup>14</sup> First, the specificity  
146 for IgG antibody binding was established with sera from 256 pre-COVID-19 pandemic healthy  
147 adults from 18 to 81 years of age and an additional set of 108 patients (**Figure 1A**), which  
148 included: pregnant women, individuals infected with alphacoronaviruses (NL63 and 229E),  
149 betacoronaviruses (OC43 and HKU1), HIV, Rubella, HSV1, HSV2, RSV, CMV, EBV, influenza or  
150 varicella, as well as patients suffering from autoimmune diseases such as Lupus. The signal  
151 distribution for all SARS-CoV-2 negative sera was similar for the 256 pre-COVID-19 healthy  
152 adults and for the diverse panel of 108 subjects. A cut-off for positivity was set at 4-fold above  
153 a negative control standard, which is slightly more than four standard deviation above the  
154 mean of all negative control samples (mean MFI ratio  $0.84 + 4 \times 0.75$  SD). Using this threshold,  
155 only one sera of the 256 pre-COVID-19 people and two patients with acute HIV or CMV viral  
156 infections gave a positive signal (**Figure 1 A**). As such, the Luminex assay using the stable  
157 trimeric S protein gave a high overall specificity of 99.2% and no cross-reactive antibodies  
158 were detected in sera from people infected with pre-pandemic coronaviruses or from patients  
159 with autoimmune diseases that can produce polyreactive antibodies.

160

161 The sensitivity of the assay was next evaluated using sera from 96 acutely infected SARS-CoV-  
162 2 PCR-positive patients with blood sampling at 0-5 days, 6-10 days, 11-15 days and 16-33 days  
163 post-onset of symptoms (POS). As anticipated, sera collected during the early stage of the  
164 infection (0-5 days POS) had low or undetectable levels of anti-S protein IgG antibodies, with  
165 a rate of positivity of 12.5% (1 in 8 subjects; **Figure 1B**). Seropositivity increased to 42.1%  
166 (8/19) at 6-10 days POS and to 91.7% (33/36) at 11-15 days POS. Almost all patients with  
167 symptoms for 16-33 days (28/29; 96.6%) displayed high antibody titers for the S protein  
168 trimer. Interestingly, the only subject that was negative in the S protein trimer assay at day 25  
169 post-onset of symptoms became seropositive when re-tested seven days later.

170 We then performed head-to-head comparisons of S trimeric versus S1 or RBD monomeric  
171 proteins for IgG antibody responses within the Luminex assay. The responses observed with  
172 the S monomeric proteins were similar in sensitivity to those described in previous studies<sup>15,16</sup>  
173 using monomeric proteins but inferior to those obtained with the trimeric S protein  
174 **(Supplemental Figure 2A and B)**.

175

#### 176 **Anti- IgA antibody response against the S protein trimer**

177 We next evaluated the S protein trimer for the detection of anti-SARS-CoV-2 IgA antibodies.  
178 We established assay specificity and a cut-off threshold for positivity by screening sera from  
179 pre-COVID-19 healthy adults. Using four standard deviations above the standard negative  
180 control, this assay provided a 98.5% specificity in the 256 sera tested. The sensitivity was  
181 estimated on 81 out of 96 acute infected SARS-CoV-2 patients' sera with positive detections  
182 ranging from 33.3% of patients at 0-5 days POS with seropositivity increasing to 68.8% in  
183 patients from the 6-10 days group. At 11-15 and 16-33 days POS, IgAs were detected in 94.4%  
184 and 90% of the cases, respectively **(Figure 2)**.

185

#### 186 **Anti-S versus anti-N antibody responses during the acute phase of infection**

187 Anti-S and anti-N antibody responses were determined using four different technologies, i.e  
188 Luminex, ELISA, CLIA and ECLIA. The different assays used were detecting the N protein alone,  
189 the N plus a monomeric antigen of the S protein, the monomeric S protein alone and the  
190 native trimeric S protein. More details about the five commercial assays used are contained  
191 in the Methods. We performed the comparison on the same set of 96 sera from patients with  
192 acute infection and stratified based on time between symptoms onset and sera collection as  
193 shown in **Figures 1B**. Small differences in the number of sera tested across assays is due to  
194 insufficient volume of some samples. The specificity was evaluated on a common panel of 65  
195 pre-COVID-19 pandemic sera sampled before November 2019.

196 Increased sensitivity in the detection of both anti-N and anti-S IgG antibody responses was  
197 observed consistently over time post-symptoms regardless of the test used **(Figure 3 A-B,**  
198 **Table 1)**. The use of the native trimeric S protein was associated with the higher sensitivity,

199 i.e. detection of anti-S IgG antibodies in 97% of individuals tested > Day 15 POS, as compared  
200 to the use monomeric S and/or N proteins with a sensitivity ranging between 83 to 93%  
201 (**Figure 3 B-C, Table 1**). The specificity was equal or above 97% (**Figure 3 C**) regardless of the  
202 test and antigen used and none displayed cross-reactivity with sera from patients positive for  
203 229E, OC43, HKU1, NL63 coronaviruses (**Figure 1A**).

204

205 Taken together, these results indicate that antibody responses targeting the S and/or the N  
206 proteins have similar sensitivity during the acute phase of infection.

207

### 208 **Comparison of anti-S and anti-N IgG antibody responses during the post-infection phase**

209 We next evaluated anti-S and anti-N IgG antibody responses on 578 sera as part of a  
210 population-based seroprevalence study of the Vaud Canton in Switzerland, while being blind  
211 to the seropositivity status. These comparisons included 90 sera sampled from mildly to  
212 paucisymptomatic patients tested positive by RT-PCR, 177 sera sampled from ‘positive patient  
213 contacts’ of RT-PCR positive subjects, and 311 sera sampled from undefined, ‘random  
214 selected’ people from the general population aged 6 months and over. Results of the  
215 comparisons are shown in **Figure 4**, and **Table 2**. As expected, a good correlation in the  
216 proportion of seropositive individuals was observed between tests detecting antibody  
217 responses against the trimeric and/or monomeric S proteins while a poorer correlation was  
218 observed with those detecting anti-N antibody responses (**Figure 4**).

219

220 With regard to the ‘RT-PCR positive’ group (n=90 individuals) (**Figure 4**, blue dots), the best  
221 sensitivity (96.7%) was found with the use of the trimeric S protein as compared to that of  
222 monomeric S and N proteins (**Table 2**).

223

224 Regarding ‘positive patient contact’ group (**Figure 4**, red dots), the highest positivity rate  
225 (36.2%) was observed with the trimeric S protein while positivity rates ranged between 32.2  
226 and 24.3% with the other antigenic proteins (**Figure 4 and Table 2**).

227

228 With regard to the ‘random selected’ group, (**Figure 4**, green dots; **Table 2**), we observed that  
229 anti-S antibody responses identified greater percentages of SARS-CoV-2 positive people  
230 (between 6.4 to 4.2%), than anti-N antibody responses (4.5 to 3.5%). Importantly, the pan-Ig  
231 test (#6 in **Table 2**) using the N protein antigen was the second most sensitive assay in the  
232 acute infected cohort and in the ‘RT-PCR positive’ and ‘positive patient contacts’ groups, but  
233 conversely, was one of the least sensitive test (3.9%) in detecting seropositive people  
234 randomly selected from the general population. The significantly higher sensitivity of the  
235 trimeric S protein antigen in the post-infection setting is highlighted in **Figure 5**. Compared to  
236 the N and or monomeric S antigens, the trimeric S protein identified 10.9% to 32.8% more  
237 positive subjects in the ‘positive patient contacts’ group, 30% to 45% more positive subjects  
238 in the ‘random selected’ group and 17.9% to 35.7% more positive subjects in a combined  
239 analysis of the ‘positive patient contacts’ and ‘random selected’ groups. In the overall post-  
240 infection cohort of 578 subjects, the trimeric S protein performed significantly better and  
241 detected between 9.4% and 31% more seropositive participants than the N and/or the S  
242 monomeric proteins (**Figure 5**).

243

244 Taken together, these results indicate that anti-N antibody responses may substantially (i.e.  
245 30% to 45%) underestimate the proportion of SARS-CoV-2 exposed individuals compared to  
246 anti-S antibody responses in population-based seroprevalence studies.

247

## 248 **Discussion**

249

250 Population-based seroprevalence studies are important to monitor the dynamics of the  
251 pandemic, to have a better appreciation of the number of infections and to determine the  
252 proportion of the population that has developed specific SARS-CoV-2 immunity. Population-  
253 based seroprevalence studies performed in Switzerland, Spain and in New York City indicate  
254 that a minor percentage of the population, ranging from 10 to 20% of individuals, has been  
255 infected with SARS-CoV-2.<sup>2-4,17-19</sup> The estimates of SARS-CoV-2 infected individuals from



256 seroprevalence studies may be substantially influenced by qualitative and quantitative  
257 changes in the antibody responses from the transition from the acute to the post-infection  
258 phase, the clinical severity of the infection and the antigenic protein used for the detection of  
259 the antibody responses.

260 SARS-CoV-2 specific antibodies (predominantly IgG) targeting either the S or the N proteins  
261 are generally assessed in both the acute and post-infection phases. The majority of studies  
262 and the validation of the tests with regard to the sensitivity and specificity has been mostly  
263 performed on cohorts from patients during the acute phase of infection.<sup>16,17,20,21</sup> The results  
264 from these studies indicate the use of N and S proteins were considered as equally sensitive,  
265 with a generally higher sensitivity for the N protein to monitor the development of antibody  
266 responses. Based on these observations in the acute phase of infection, it has been assumed  
267 that determination of antibody responses against the N or S proteins would be equally suitable  
268 in the post-infection phase for population-based seroprevalence studies. However, limited  
269 information is yet available on the evolution of the antibody response during the transition  
270 from the acute to the post-infection phase and, in particular, on the antibody responses  
271 against the two targets, S and N proteins. Furthermore, the population-based studies  
272 comprise diverse populations of individuals including RT-PCR positive individuals with  
273 moderate to severe symptomatic infection who required hospitalization, RT-PCR positive  
274 individuals with mild symptoms who did not require hospitalization and pauci-/asymptomatic  
275 individuals with no previous RT-PCR confirmation of COVID-19 infection. Previous studies have  
276 shown that the magnitude of the antibody response may be influenced by the severity of the  
277 symptoms with robust antibody response in patients with severe infection while weaker  
278 antibody response in patients with mild infection. Therefore, antibody responses can be lower  
279 in pauci-/asymptomatic individuals. For these reasons, population-based studies can be very  
280 challenging to estimate the proportion of SARS-CoV-2 infections in individuals who have  
281 experience pauci-/asymptomatic infection.

282 Our results indicate a substantial drop in the sensitivity of antibody responses specific to the  
283 N protein thus strongly suggesting a waning of these responses in the post-infection phase. In  
284 this regard, the estimated seroprevalence in the 'positive patient contacts' and 'random  
285 selected' groups is mostly impacted when only anti-N responses are assessed with an

286 underestimation ranging from 11 to 33% for the former and 30 to 45% for the latter group as  
287 compared to anti-S trimeric responses within the same groups.

288 Of note, the underestimation of SARS-CoV-2 seropositive individuals was also observed for  
289 antibody responses against monomeric S1 or RBD and was in the range of 18-22% in the  
290 'positive patient contacts' and 30-35% in the 'random selected' groups samples. The greater  
291 sensitivity of antibody responses found against the trimeric S protein likely results from  
292 antibodies binding to the S2 subunit and the conservation of conformational epitopes within  
293 the higher order structure. This increased sensitivity was not obtained at the expense of cross-  
294 reactivity, since the specificity observed using the trimeric S protein was >99%. Overall, the  
295 underestimation of SARS-CoV-2 seropositive individuals was less important in the 'Positive RT-  
296 PCR patients' group ranging from 1 to 26%.

297 A recent study<sup>22</sup> has shown that 40% of asymptomatic individuals became seronegative over  
298 time. However, anti-N antibody responses were determined in this study. Based on our  
299 results, it is likely that the loss of antibody response observed is due to the selective waning  
300 of the anti-N rather antibody responses rather than to a global reduction of the SARS-CoV-2  
301 antibody response.

302 Furthermore, the present findings are also important for the development appropriate  
303 monitoring strategies for the evaluation and development of vaccines against SARS-CoV-2.

304 In conclusion, these results provide new insights in the evolution of the SARS-CoV-2 antibody  
305 response from the acute to the post-infection phase and indicate that the detection of  
306 antibody responses against the native trimeric S protein should be implemented to avoid large  
307 underestimation of SARS-CoV-2 infections in population-based seroprevalence studies.

308

309

310

311

312

313

314

## 315 **Material and Methods**

316

### 317 **Study populations**

318

#### 319 **Patients with acute infections**

320 Comparison of tests for acute/sub-acute phase of the infection was performed on 161 sera,  
321 including i) 96 sera, expected to be positive, sampled from hospitalized patients with severe  
322 to mild symptoms 0 to 45 days post onset of the symptoms and documented with a positive  
323 SARS-CoV-2 RT-PCR ; ii) 65 sera, expected to be negative, sampled before November 2020,  
324 presented as pre-COVID-19 sera, and including 18 samples from patient documented positive  
325 for a Human coronavirus (E229, OC43, HKU1, NL63) RT-PCR. Date of the symptoms onset were  
326 extracted from the electronic record of the 96 SARS-CoV-2 RT-PCR positive patients.

327

#### 328 **Post-infection cohort**

329 A second comparison of tests was performed on sera from the seroprevalence study of the  
330 Vaud Canton in Switzerland (SerocoViD) performed by the Centre for Primary Care and Public  
331 Health, University of Lausanne (Unisanté). Out of the 1,942 participants who provided a blood  
332 sample between May 4 and June 27, 2020, a subset of 578 subjects were included in the  
333 present analysis, of which: i) 90 subjects were expected to be positive—sampled from mostly  
334 mildly to paucisymptomatic patients (only 21% had been hospitalized) documented with a  
335 positive SARS-CoV-2 RT-PCR ; ii) 177 were sampled from contacts of RT-PCR positive subjects,  
336 and iii) 311 were randomly selected subjects in the general population. There were 304  
337 women (52.6%), and the mean age was 39.2 years (SD 24.2, range: 6 months to 90 years).

338

#### 339 **Pre-COVID-19 pandemic donors**

340 Negative control serum samples from 256 adult healthy donors with ages ranging for 18 to 81  
341 years of age were collected prior to November 2019 as part of the Swiss Immune Setpoint  
342 study sponsored by Swiss Vaccine Research Institute. Specificity tests for the Luminex S-  
343 protein assay with a diverse set of 108 patient sera included the 65 sera collected prior to  
344 November 2019 and used in the blinded tested performed with all six assays and an additional  
345 43 patient samples. This diverse set of samples consisted of sera from pregnant women  
346 (n=14), pre-pandemic coronavirus infected donors (OC43, E229, NL63 and HKU1; n=19),  
347 patients with infectious diseases (HIV, Rubella, HSV1, HSV2, CMV, EBV, influenza and varicella;  
348 n=57) and patients with autoimmune diseases including Lupus (n=18). Study design and use  
349 of subject sera samples were approved by the Institutional Review Board of the Lausanne  
350 University Hospital and the 'Commission d'éthique du Canton de Vaud' (CER-VD) stated that  
351 authorization was not required.

352

### 353 **Preparation of Luminex beads**

354 Luminex beads used for the serological binding assays were prepared by covalent coupling of  
355 SARS-CoV-2 proteins with MagPlex beads using the manufacture's protocol with a Bio-Plex  
356 Amine Coupling Kit (Bio-Rad, France). Briefly, 1 ml of MagPlex-C Microspheres (Luminex) were  
357 washed with wash buffer and then resuspended in activation buffer containing a freshly  
358 prepared solution of 1-ethyl-3-(3-dimethylaminopropyl) carbodiimide (EDC) and N-  
359 hydroxysulfosuccinimide (S-NHS), (ThermoFischer, USA). Activated beads were washed in PBS  
360 followed by the addition of 50 µg of protein antigen. The coupling reaction was performed at  
361 4 °C overnight with bead agitation using a Hula-Mixer (ThermoFischer). Beads were then  
362 washed with PBS, resuspended in blocking buffer then incubated for 30 minutes with agitation  
363 at room temperature. Following a final PBS washing step, beads were resuspended in 1.5 ml  
364 of storage buffer and kept protected from light in an opaque tube at 4 °C. Each of the SARS-  
365 CoV-2 proteins was coupled with different colored MagPlex beads so that tests could be  
366 performed with a single protein bead per well or in a multiplexed Luminex serological binding  
367 assay.

368

### 369 **SARS-CoV-2 proteins evaluated in Luminex assay**

370 The S protein trimer was designed to mimic the native trimeric conformation of the protein in  
371 vivo and the expression vector was kindly provided by Prof. Jason McLellan, University of  
372 Texas, Austin; 25. It encoded the prefusion ectodomain of the SARS-CoV-2 Spike with a C-  
373 terminal T4 foldon fusion domain to stabilize the trimer complex along with C-terminal 8x His  
374 and 2x Strep tags for affinity purification. The trimeric Spike protein was transiently expressed  
375 in suspension-adapted ExpiCHO cells (Thermo Fisher) in ProCHO5 medium (Lonza) at 5 x10<sup>6</sup>  
376 cells/mL using PEI MAX (Polysciences) for DNA delivery. At 1 h post-transfection, dimethyl  
377 sulfoxide (DMSO; AppliChem) was added to 2% (v/v). Following a 7-day incubation with  
378 agitation at 31 °C and 4.5% CO<sub>2</sub>, the cell culture medium was harvested and clarified using a  
379 0.22 µm filter. The conditioned medium was loaded onto Streptactin (IBA) and StrepTrap HP  
380 (Cytiva) columns in tandem, washed with PBS, and eluted with 10 mM desthiobiotin in PBS.  
381 The purity of S protein trimer was determined to be > 99% pure by SDS-PAGE analysis.

382

383 Receptor binding domain (RBD) and S1 SARS-CoV-2 proteins were prepared as previously  
384 described.<sup>23</sup> In initial characterization of the assays, serum dilutions of 1/50 down to 1/ 2'700  
385 were evaluated for SARS-CoV-2 PCR-positive subjects and healthy donors. A 1/300 dilution of  
386 serum was selected for screening patient samples since it showed a high MFI signal for all  
387 donors and a low background staining with serum samples from pre-COVID-19 pandemic  
388 healthy donors. In addition to the high positive signal and low background, <1 µl of serum was  
389 needed to evaluate anti-SARS-CoV-2 antibody binding in the Luminex assay binding assays.

390

391

## 392 **Luminex anti-SARS-CoV-2 antibody binding assay**

393 Luminex beads coupled with the Spike, RBD or S1 proteins were diluted 1/100 in PBS with 50  
394  $\mu$ l added to each well of a Bio-Plex Pro 96-well Flat Bottom Plates (Bio-Rad). Following bead  
395 washing with PBS on a magnetic plate washer (MAG2x program), 50  $\mu$ l of individual serum  
396 samples diluted at 1/300 in PBS, were added to the plate wells. Along with samples, three  
397 replicates of a 1/300 negative control pool of pre-COVID-19 pandemic healthy human sera  
398 (BioWest human serum AB males; VWR) were evaluated on each 96-well plate. Plates were  
399 sealed with adhesive film, protected from light with a dark cover and agitated at 500 rpm for  
400 60 minutes on a plate shaker. Beads were then washed on the magnetic plate washer and  
401 anti-human IgG-PE secondary antibody (OneLambda ThermoFisher) was added at a 1/100  
402 dilution with 50 $\mu$ l per well. Plates were agitated for 45 minutes, and then washed on the  
403 magnetic plate washer. Beads resuspended in 80  $\mu$ l of reading buffer were agitated 5 minutes  
404 at 700 rpm on the plate shaker then read directly on a Luminex FLEXMAP 3D plate reader  
405 (ThermoFisher). MFI signal for each test serum samples was divided by the mean signal for  
406 the negative control samples to yield an MFI ratio that normalized values between plates and  
407 between different Luminex instruments tested. Considering that two of the three false  
408 positives from the 364 SARS-CoV-2 negative donors had MFI signals less than 6 (**Figure 1A**), an  
409 additional criteria for positivity was established for large general population screens, including  
410 the post-infection cohort. Here, sera with signal intensities between 4 and 6 were defined as  
411 being at the limit of positivity, which increases the assay sensitivity to 99.7% with only one  
412 acute HIV infected subject having a 6.8 MFI signal.

413

## 414 **Immunoassays**

415 The new Luminex S protein trimer IgG assay was compared with five commercially available  
416 SARS-CoV-2 immunoassays: i) two ELISAs from EuroImmun (Test 3 S1 mono) and Epitope  
417 Diagnostics (Test 4 N protein) detecting IgG against the S1 and N proteins, respectively, ii) two  
418 CLIA from Diasorin (Test 1 S1 mono) and Snibe (Test 5 N protein) detecting IgG against S1  
419 protein and N protein + S antigen peptide, respectively, and iii) a pan-Ig ECLIA from Roche  
420 (Test 6 N protein) targeting the N protein. The Snibe assay was grouped with the N protein  
421 assays in our analysis since it contained only a portion of the S1 protein.

422 ELISA and CLIA were performed according to the manufacturers' instructions. EuroImmun and  
423 Epitope Diagnostic IgG ELISA were done manually as per protocol with the exception of  
424 washing steps performed with a microplate washer (PW40, Bio-Rad, France). Optical densities  
425 (OD) was measured with a microplate reader (800 TSI, BioTek, USA). Each sample was  
426 measured in duplicates. The LIAISON<sup>®</sup> SARS-CoV-2 IgG kit was performed on a Liaison<sup>®</sup> XL  
427 (Diasorin, Italy), and the MAGLUMI<sup>™</sup> 2019-nCoV IgG and IgM kits were performed on a  
428 MAGLUMI<sup>™</sup> 800 (Snibe, China). The Elecsys anti-SARS-CoV-2 was performed on a COBAS 6000  
429 (Roche, Switzerland).

430

431

432 **Statistical analyses**

433

434 The sensitivity of the different tests was calculated according to day post-symptoms on  
435 expected positive sera taken from patients with a positive RT-PCR. The RT-PCR was previously  
436 performed according to Corman et al.<sup>24</sup> on our automated molecular diagnostic platform.<sup>25</sup>

437

438 Sensitivity and specificity of the tests with 95% CI (Wilson/Brown method of GraphPad Prism  
439 8.3.0) were calculated with Excel and GraphPad prism. For comparisons between the Luminex  
440 assay and the five other serological assays, R<sup>2</sup> values were calculated using the Pearson test  
441 and the McNemar's test was used to determine the P-value significant differences for  
442 sensitivities in detecting seropositive subjects in the patient subsets within the post-infection  
443 cohort. All statistics were done with GraphPad prism.

444

445

446

447

448

449

450

451

452

453

454

455

456

457

458

459

460

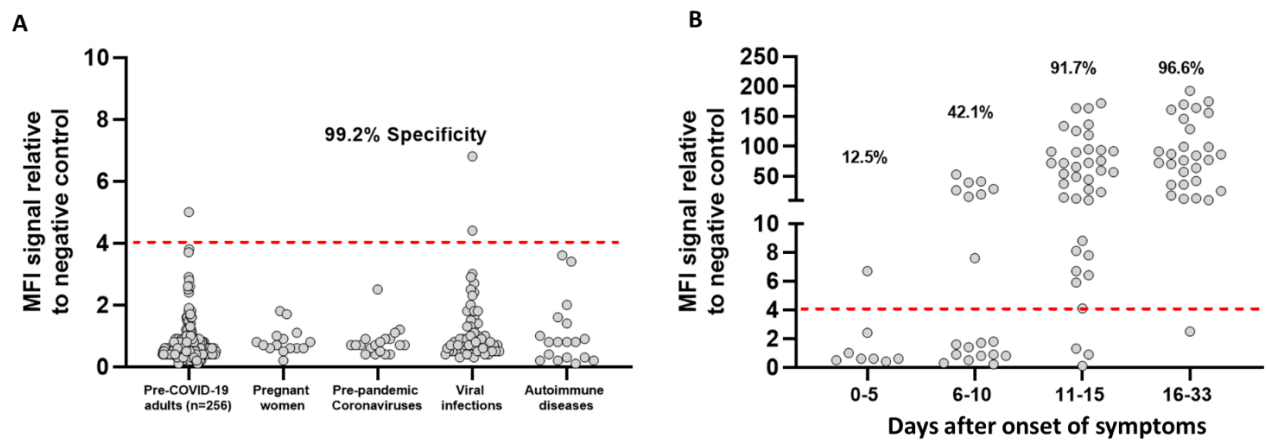
461

462

463

464 **Figures and Figure legends**

465



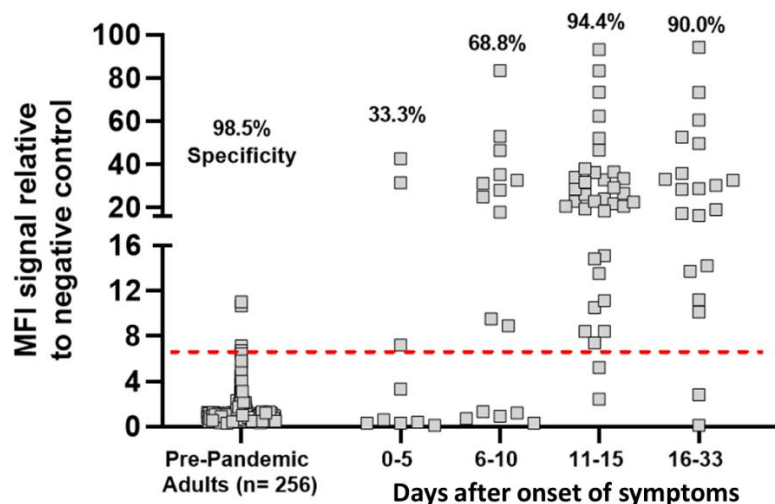
466

467 **Figure 1: SARS-CoV-2-specific IgG binding antibody responses against the native trimeric S**  
468 **protein in a Luminex binding assay.** Luminex beads covalently coupled with SARS-CoV-2 S  
469 protein trimer were used to monitor IgG binding antibody responses in pre-COVID-19  
470 pandemic negative control sera and sera from SARS-CoV-2 PCR positive donors. MFI signals  
471 for serum antibody binding was expressed as a ratio compared to a negative control pool of  
472 pre-COVID-19 pandemic human serum tested in parallel. A) Assay specificity was evaluated  
473 using the sera from pre-COVID-19 pandemic healthy adults (n=256; ages ranging between 18  
474 to 81 years of age), pregnant woman, pre-pandemic coronavirus infected donors (OC43, E229,  
475 NL63 and HKU1), patients with infectious diseases (HIV, Rubella, HSV1, CMV, EBV, influenza  
476 and varicella) and patients with autoimmune diseases including Lupus. B) The sensitivity of  
477 the S protein trimer was evaluated with sera from acute infected SARS-CoV-2 PCR-positive  
478 donors at 0-5 days, 6-10 days, 11-15 days and 16-33 days post-onset of symptoms. The red  
479 dashed line in A and B corresponds to the 4.0 cut-off for positivity in the IgG Luminex assay  
480 that was established by using mean value + 4×SD of all 364 pre-COVID-19 pandemic serum  
481 samples shown in A.

482

483

484



485

486

487 **Figure 2: SARS-CoV-2-specific IgA binding antibody responses against the native trimeric S**  
488 **protein in a Luminex binding assay.** The native trimeric S protein was used to monitor IgA  
489 binding antibodies in sera from pre-COVID-19 pandemic negative control donors and sera  
490 from acute SARS-CoV-2 PCR positive donors. The Luminex assay exhibited high specificity of  
491 98.5% against a cohort of negative control donors and was effective at detecting IgA  
492 antibodies specific for S protein in most subjects in both the early stage (0 to 10 days) and  
493 later stage (11 to 33 days) after onset of symptoms in acute PCR-positive patients. The red  
494 dashed line corresponds to 6.5-fold MFI signal over the internal negative control and was  
495 established by using the mean value + 4×SD of the 256 pre-COVID-19 pandemic adult serum  
496 samples.

497

498

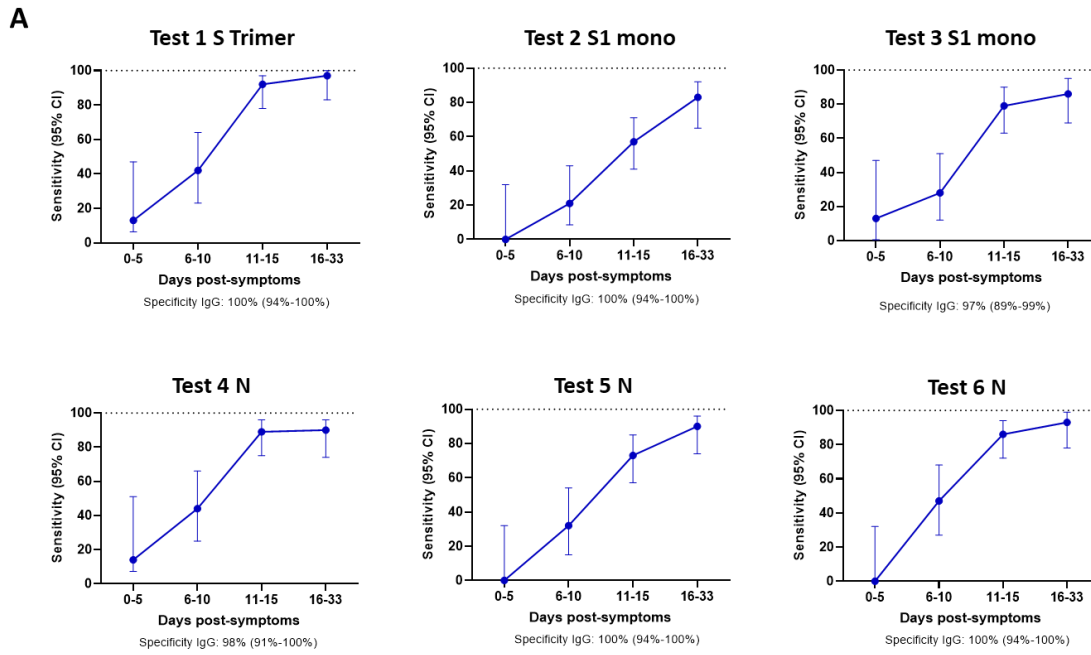
499

500

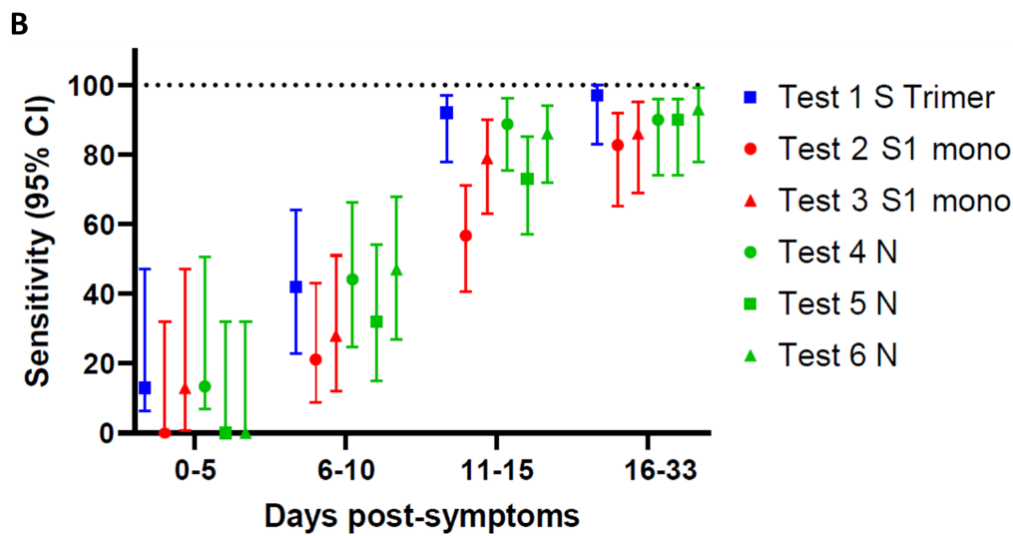
501

502

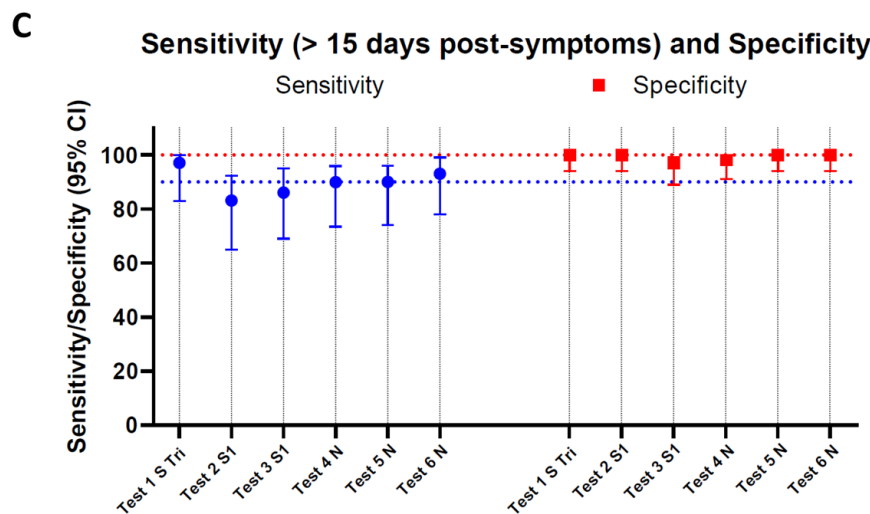




503



504



505

506

507 **Figure 3: Comparative analysis of SARS-CoC-2-specific IgG binding antibody responses**  
508 **against S and N proteins in sera from patients with acute infection using six different**  
509 **serological tests.** Sensitivity in detecting anti-SARS-CoV-2-specific IgG antibodies was assessed  
510 using the Luminex assay and five other commercial assay as described in the Methods. **A-B)**  
511 Serum samples were grouped by the number of days after initial onset of symptoms with  
512 sensitivity increasing over time. **C)** Comparison in sensitivity between the different tests in  
513 samples collected from day 16 to 33 post-symptoms. S Tri: trimeric S protein; S1: monomeric  
514 protein; N: nucleocapside protein.

515

516

517

518

519

520

521

522

523

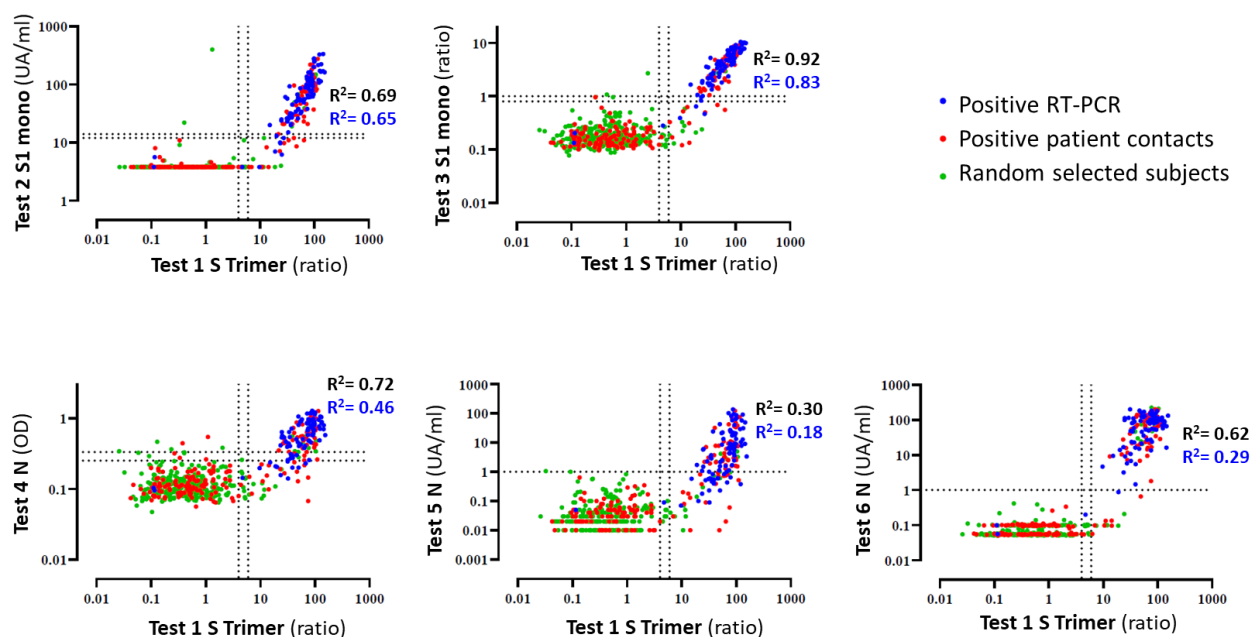
524

525

526

527

528



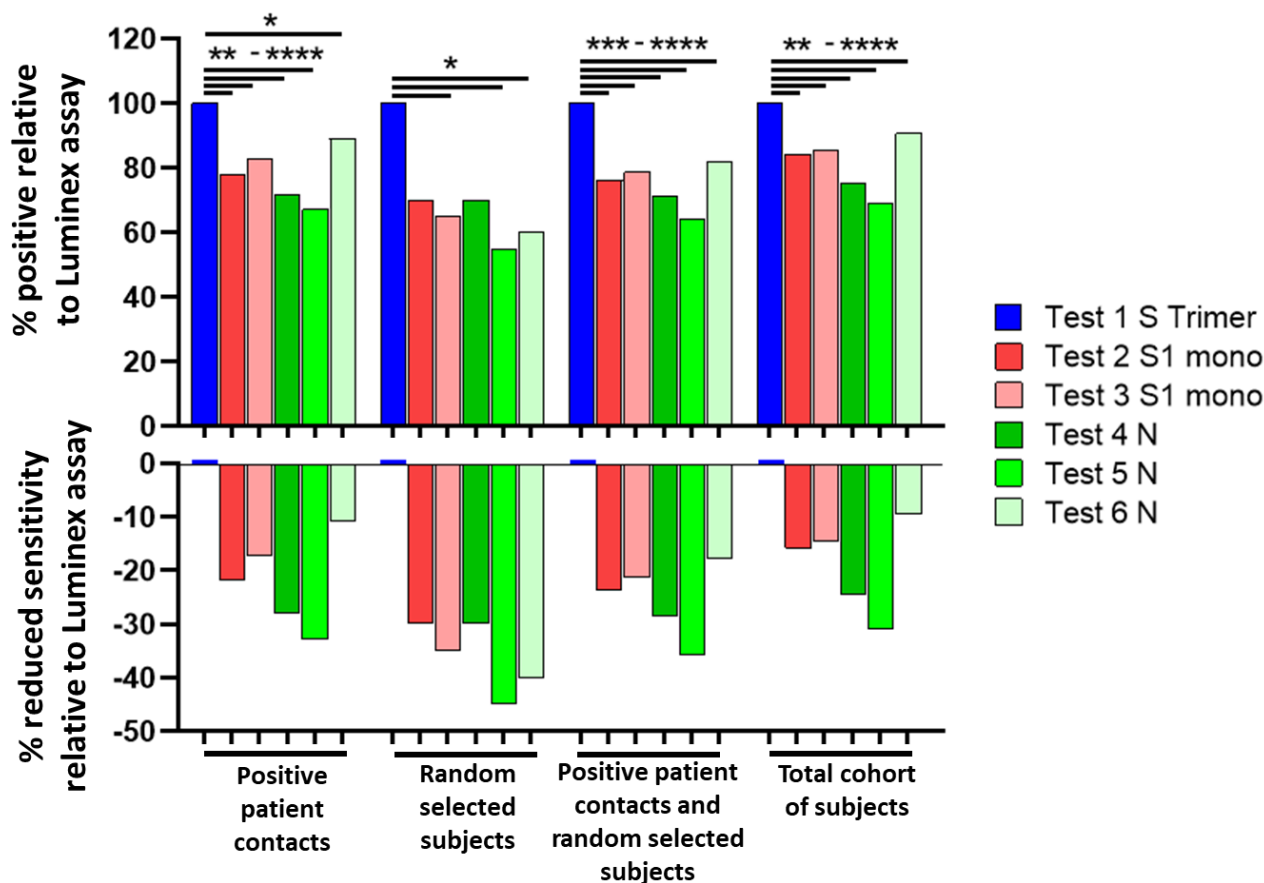
529

530 **Figure 4: Comparative analysis of IgG antibody responses against the trimeric S protein**  
531 **versus monomeric S and/or N proteins.** Signal intensities for the different subject sera in the  
532 post-infection cohort were compared between the Luminex and the five other serological  
533 assays. Collected sera were from patients with a documented positive SARS-CoV-2 RT-PCR (90  
534 sera; blue dots), positive patient contacts with a SARS-CoV-2 RT-PCR positive patient (177 sera;  
535 red dots) and randomly selected individuals from the general population (311 sera; green  
536 dots). Pearson correlation R<sup>2</sup> values are given for all 578 participants (black text) or for 183  
537 Luminex positive sera (blue text).

538

539

540



541

542 **Figure 5: SARS-CoV-2-specific antibody responses to the trimeric S protein have**  
 543 **significantly increased sensitivity as compared to S1 monomeric and/or N proteins in the**  
 544 **post-infection population-based study.** Analysis shows the percentage of seropositive  
 545 subjects relative to the estimates obtained with the trimeric S protein (top) and the  
 546 percentage of reduced sensitivity relative to the S1 monomeric and/or N proteins (bottom).  
 547 Tests with blue bars used the S protein trimer as their bait for binding serum antibodies while  
 548 the red bars used the monomeric S1 protein and the green bars the N protein. Statistical  
 549 analysis was performed using the McNemar test for matched participant samples where  
 550  $P < 0.045$  (\*);  $P < 0.0022$  (\*\*);  $P < 0.0009$  (\*\*\*) ;  $P \leq 0.0001$  (\*\*\*\*).

551

552

553

554

555

556

557

558

559

560 **Table 1.** Cumulative data of SARS-CoV-2-specific IgG antibody responses on sera collected  
 561 during the acute infection from hospitalized patients with moderate to severe symptoms

562

Test	Days post-symptoms	N° sera from patients RT-PCR pos		IgG** Se	IgG** Se 95% CI	N° sera pre-COVID*		IgG** Sp	IgG** Sp 95% CI
		Total	Positive in serology			Total	Positive in serology		
Test 1 S Trimer	All	94	71	0.76	0.66 to 0.83	65	0	1	0.94 to 1.0
	0-5	8	1	0.13	0.0064 to 0.47				
	6-10	19	8	0.42	0.23 to 0.64				
	11-15	36	33	0.92	0.78 to 0.97				
	16-33	29	28	0.97	0.83 to 1.0				
Test 2 S1 mono	All	96	49	0.51	0.41 to 0.61	65	0	1	0.95 to 1.0
	0-5	8	0	0	0.0 to 0.32				
	6-10	19	4	0.21	0.085 to 0.43				
	11-15	37	21	0.57	0.41 to 0.71				
	16-33	29	24	0.83	0.65 to 0.92				
Test 3 S1 mono	All	91	58	0.64	0.53 to 0.73	65	2	0.97	0.90 to 0.99
	0-5	8	1	0.13	0.0064 to 0.47				
	6-10	18	5	0.28	0.12 to 0.51				
	11-15	34	27	0.79	0.63 to 0.90				
	16-33	29	25	0.86	0.69 to 0.95				
Test 4 N	All	93	68	0.73	0.63 to 0.81	65	1	0.98	0.92 to 1.0
	0-5	7	1	0.14	0.0073 to 0.51				
	6-10	18	8	0.44	0.25 to 0.66				
	11-15	36	32	0.89	0.75 to 0.96				
	16-33	29	26	0.89	0.74 to 0.96				
Test 5 N	All	96	60	0.63	0.53 to 0.72	65	0	1	0.95 to 1.0
	0-5	8	0	0	0.0 to 0.32				
	6-10	19	6	0.32	0.15 to 0.54				
	11-15	37	27	0.73	0.57 to 0.85				
	16-33	29	26	0.9	0.74 to 0.96				
Test 6 N	All	96	68	0.73	0.62 to 0.80	65	0	1	0.95 to 1.0
	0-5	8	0	0	0.0 to 0.32				
	6-10	19	9	0.47	0.27 to 0.68				
	11-15	37	32	0.86	0.72 to 0.94				
	16-33	29	27	0.93	0.78 to 0.99				

Se : sensitivity ; Sp : specificity ; \* serum sampled before 1st November 2019 considered as “negative”; \*\*IgG, except for the Test 6 N, which corresponds to a pan-Ig assay

563

564

565

566

567

568

569

570

571

572

573

574

575

576

577 **Table 2:** Estimates of SARS-CoV-2 infections in the based population study.

578

	Test 1 S Trimer						Test 2 S1 mono						Test 3 S1 mono					
	Positive RT-PCR		Positive patient contacts		Random selected Subjects		Positive RT-PCR		Positive patient contacts		Random selected Subjects		Positive RT-PCR		Positive patient contacts		Random selected Subjects	
	%	N	%	N	%	N	%	N	%	N	%	N	%	N	%	N	%	N
<b>Positive</b>	96.7	87	36.2	64	6.4	20	88.9	80	28.2	50	4.5	14	88.9	80	29.9	53	4.2	13
<b>Negative</b>	2.2	2	62.7	111	90.7	282	8.9	8	70.6	125	95.2	296	6.7	6	68.9	122	94.9	295
<b>Limit</b>	1.1	1	1.1	2	2.9	9	2.2	2	1.1	2	0.3	1	4.4	4	1.1	2	1.0	3

	Test 4 N						Test 5 N						Test 6 N					
	Positive RT-PCR		Positive patient contacts		Random selected Subjects		Positive RT-PCR		Positive patient contacts		Random selected Subjects		Positive RT-PCR		Positive patient contacts		Random selected Subjects	
	%	N	%	N	%	N	%	N	%	N	%	N	%	N	%	N	%	N
<b>Positive</b>	76.7	69	26.0	46	4.5	14	71.1	64	24.3	43	3.5	11	95.6	86	32.2	57	3.9	12
<b>Negative</b>	17.8	16	70.6	125	93.6	291	28.9	26	75.7	134	96.5	300	4.4	4	67.8	120	96.1	299
<b>Limit</b>	5.6	5	3.4	6	1.9	6	0.0	0	0.0	0	0.0	0	0.0	0	0.0	0	0.0	0

Se Test 1 Tri CI 95% : 0.92 to 0.996 on Positive RT-PCR sera  
 Se Test 2 S CI 95% : 0.83 to 0.95  
 Se Test 3 S CI 95% : 0.86 to 0.97  
 Se Test 4 N CI 95% : 0.72 to 0.88  
 Se Test 5 N CI 95% : 0.61 to 0.79  
 Se Test 6 N CI 95% : 0.89 to 0.98

579

580

581

582

583

584

585

586

587

588

589

590

591

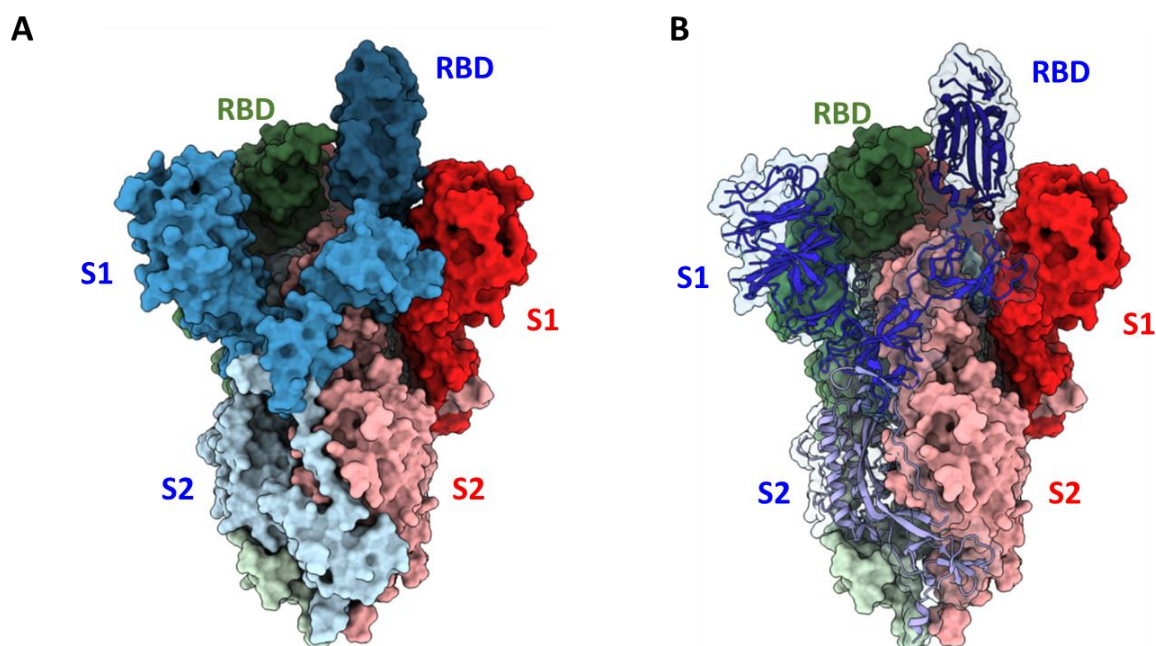
592

593

594

595

596 **Supplemental Figures**



597

598 **Supplementary Figure 1: Structural representation of the SARS-CoV-2 S protein Trimer.** A)  
599 Space filled representation of the S protein with trimer subunits shown in blue, red and green  
600 (PDB 6VSB). The labeled S2, S1 and RBD portions of each subunit are in light, mid and dark  
601 colors, respectively. Compared to the monomeric S1 protein, this image demonstrates that  
602 the native S protein trimer, consisting of S1 and S1 proteins, that has significantly greater  
603 conformational epitopes for antibody binding that are only present in the higher order  
604 structure. B) S protein trimer with the blue subunit represented as a ribbon structural.

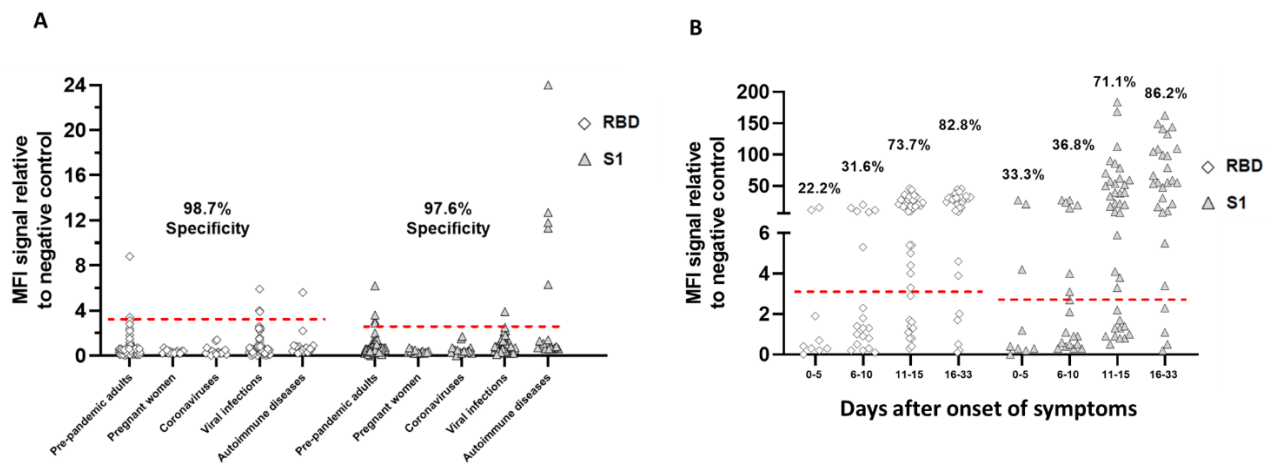
605

606

607

608

609



610

611 **Supplementary Figure 2: SARS-CoV-2-specific IgG binding antibody responses against the**  
 612 **monomeric S1 and RBD domains in a Luminex binding assay.** A) Specificity was assessed using  
 613 the cohort of negative control sera described in Figure 1A. B) Sensitivity was determined with  
 614 the 94 acute infected serum samples described in Figure 1B. The cut-off for positivity used in  
 615 the RBD and S1 Luminex IgG assays are 3.2- and 2.8-fold over the negative control, respectively  
 616 and were established by using mean value + 4×SD of each for the 364 pre-COVID-19 pandemic  
 617 serum samples in A.

618

619

## 620 References

- 621 1. WHO. Coronavirus disease (COVID-2019) situation reports -175. Vol. July 12th, 2020 (2020).
- 622 2. Norheim, O.F. Protecting the population with immune individuals. *Nat Med* **26**, 823-824  
 623 (2020).
- 624 3. Phelan, A.L. COVID-19 immunity passports and vaccination certificates: scientific, equitable,  
 625 and legal challenges. *Lancet* **395**, 1595-1598 (2020).
- 626 4. Weitz, J.S., *et al.* Modeling shield immunity to reduce COVID-19 epidemic spread. *Nat Med* **26**,  
 627 849-854 (2020).
- 628 5. Li, G., Chen, X. & Xu, A. Profile of specific antibodies to the SARS-associated coronavirus. *N Engl*  
 629 *J Med* **349**, 508-509 (2003).
- 630 6. Zhao, J., *et al.* Antibody responses to SARS-CoV-2 in patients of novel coronavirus disease 2019.  
 631 *Clin Infect Dis* (2020).
- 632 7. Meyer, B., Drosten, C. & Muller, M.A. Serological assays for emerging coronaviruses:  
 633 challenges and pitfalls. *Virus Res* **194**, 175-183 (2014).
- 634 8. Chia, W.N., *et al.* Serological differentiation between COVID-19 and SARS infections. *Emerg*  
 635 *Microbes Infect* **9**, 1497-1505 (2020).
- 636 9. Cao, W.C., Liu, W., Zhang, P.H., Zhang, F. & Richardus, J.H. Disappearance of antibodies to  
 637 SARS-associated coronavirus after recovery. *N Engl J Med* **357**, 1162-1163 (2007).
- 638 10. Choe, P.G., *et al.* MERS-CoV Antibody Responses 1 Year after Symptom Onset, South Korea,  
 639 2015. *Emerg Infect Dis* **23**, 1079-1084 (2017).
- 640 11. Wu, L.P., *et al.* Duration of antibody responses after severe acute respiratory syndrome. *Emerg*  
 641 *Infect Dis* **13**, 1562-1564 (2007).
- 642 12. Payne, D.C., *et al.* Persistence of Antibodies against Middle East Respiratory Syndrome  
 643 Coronavirus. *Emerg Infect Dis* **22**, 1824-1826 (2016).
- 644 13. Xiaoqin Guo, X., *et al.* Long-Term Persistence of IgG Antibodies in SARS-CoV Infected  
 645 Healthcare Workers. *medRxiv* (2020).



- 646 14. Wrapp, D., *et al.* Cryo-EM Structure of the 2019-nCoV Spike in the Prefusion Conformation.  
647 *bioRxiv* (2020).
- 648 15. Coste, A.T., Jaton, K., Papadimitriou-Olivgeris, M., Greub, G. & Croxatto, A. Comparison of  
649 SARS-CoV-1 2 serological tests with different antigen targets. *medRxiv* (2020).
- 650 16. Kohmer, N., Westhaus, S., Ruhl, C., Ciesek, S. & Rabenau, H.F. Brief clinical evaluation of six  
651 high-throughput SARS-CoV-2 IgG antibody assays. *J Clin Virol* **129**, 104480 (2020).
- 652 17. Stringhini, S., *et al.* Seroprevalence of anti-SARS-CoV-2 IgG antibodies in Geneva, Switzerland  
653 (SEROCoV-POP): a population-based study. *Lancet* (2020).
- 654 18. Saplakoglu, Y. 1 in 5 people tested in New York City had antibodies for the coronavirus. .  
655 *LiveScience* (2020).
- 656 19. Gobierno de España, Ministerio de Sanidad. Estudio ENE-COVID19: primera ronda. Estudio  
657 nacional de sero-epidemiología de la infección por SARS-CoV-2 en España.
- 658 20. Coste, A.T., Jaton, K., Papadimitriou-Olivgeris, M., Croxatto, A. & Greub, G. Indication for SARS-  
659 CoV-2 serology: first month follow-up. *medRxiv* (2020).
- 660 21. Montesinos, I., *et al.* Evaluation of two automated and three rapid lateral flow immunoassays  
661 for the detection of anti-SARS-CoV-2 antibodies. *J Clin Virol* **128**, 104413 (2020).
- 662 22. Long, Q.X., *et al.* Clinical and immunological assessment of asymptomatic SARS-CoV-2  
663 infections. *Nat Med* (2020).
- 664 23. Okba, N.M.A., *et al.* Severe Acute Respiratory Syndrome Coronavirus 2-Specific Antibody  
665 Responses in Coronavirus Disease Patients. *Emerg Infect Dis* **26**, 1478-1488 (2020).
- 666 24. Corman, V.M., *et al.* Detection of 2019 novel coronavirus (2019-nCoV) by real-time RT-PCR.  
667 *Euro Surveill* **25**(2020).
- 668 25. Greub, G., Sahli, R., Brouillet, R. & Jaton, K. Ten years of R&D and full automation in molecular  
669 diagnosis. *Future Microbiol* **11**, 403-425 (2016).

670