

Heterogeneity in response to serological exposure markers of recent *Plasmodium vivax* infections

Short title: Antibody responses to *P. vivax* in contrasting epidemiology contexts

Authors and Affiliations

Jason Rosado^{1,2}, Michael T. White¹, Rhea J. Longley^{3,4}, Wuelton Monteiro^{5,6}, Marcus Lacerda^{5,7}, Jetsumon Sattabongkot⁸, Alejandro Llanos-Cuentas⁹, Joseph Vinetz^{10,11}, Dionicia Gamboa^{9,10}, Ivo Mueller^{1,3,4}

1. Unit of Malaria: Parasites and hosts, Institut Pasteur, Paris, France
2. Sorbonne Université, ED 393, F-75005 Paris, France
3. Walter and Eliza Hall Institute of Medical Research, Melbourne, Australia
4. Department of Medical Biology, University of Melbourne, Australia
5. Instituto de Pesquisas Leônidas and Maria Deane, Fundação Oswaldo Cruz, Manaus, Amazonas, Brazil
6. Universidade do Estado do Amazonas, Manaus, Brazil
7. Tropical Medicine Foundation Dr Heitor Vieira Dourado, Manaus, Amazonas, Brazil
8. Vivax Research Unit, Faculty of Tropical Medicine, Mahidol University, Bangkok, Thailand
9. Instituto de Medicina Tropical Alexander von Humboldt, Universidad Peruana Cayetano Heredia, Lima, Peru
10. Laboratorio ICEMR-Amazonia, Laboratorios de Investigación y Desarrollo, Facultad de Ciencias y Filosofía, Universidad Peruana Cayetano Heredia, Lima, Peru
11. Division of Infectious Diseases, Department of Medicine, University of California San Diego School of Medicine, La Jolla, California, USA

*Correspondence

Prof Ivo Mueller

Division of Population Health and Immunity
The Walter and Eliza Hall Institute of Medical Research
1G Royal Parade
Parkville
Victoria 3052
Australia

e-mail: mueller@wehi.edu.au

37 Abstract

38 Background

39 Antibody responses to serological markers of *Plasmodium vivax* infection have been shown to correlate with exposure,
40 but little is known about the other factors which affect antibody responses in naturally infected people from endemic
41 settings. To address this question, we studied IgG responses to novel serological exposure markers (SEMs) of *P. vivax* in
42 three settings with different transmission intensity.

43 Methodology

44 We validated a panel of 34 SEMs in a Peruvian cohort with up to three years' longitudinal follow-up using the Luminex®
45 platform and compared results to data from cohorts in Thailand and Brazil. Linear regression models were used to
46 characterize the association between antibody responses and age, the number of detected blood-stage infections during
47 follow-up, and time since the last infection. Receiver Operating Characteristic (ROC) analysis was used to test the
48 performance of SEMs to identify *P. vivax* infections in the last 9 months.

49 Principal findings

50 Antibody titers were associated with age, the number of blood-stage infections, and time since last *P. vivax* infection in all
51 three study sites. The association between antibody titers and time since last *P. vivax* infection was stronger in the low
52 transmission settings of Thailand and Brazil compared to the high transmission setting in Peru. Of the SEMs tested,
53 antibody responses to RBP2b had the highest performance of classifying recent exposure in all sites, with area under the
54 ROC curve (AUC) = 0.83 in Thailand, AUC = 0.79 in Brazil, and AUC = 0.68 in Peru.

55 Conclusions

56 In low transmission settings, *P. vivax* SEMs can accurately identify individuals with recent blood-stage infections. In high
57 transmission settings, the accuracy of this approach diminishes substantially. We recommend the application of *P. vivax*
58 SEMs for use in low transmission settings pursuing malaria elimination, but they appear less useful in high transmission
59 settings focused on malaria control.

60 Author Summary

61 *Plasmodium vivax* still poses a threat in many countries due to its ability to cause recurrent infections. Key to achieving
62 the goal of malaria elimination is the ability to quickly detect and treat carriers of relapsing parasites. Failing to identify
63 this transmission reservoir will hinder progress towards malaria elimination. Recently, novel serological markers of recent
64 exposure to *P. vivax* (SEM) have been developed and validated in low transmission settings. It is still poorly understood
65 what factors affect the antibody response to these markers when evaluated in contrasting endemic contexts. To
66 determine the factors that influence the antibody response to SEM, we compare the antibody levels in three sites with
67 different transmission intensity: Thailand (low), Brazil (moderate) and Peru (high). In this study, we found that
68 transmission intensity plays a key role in the acquisition of the antibody repertoire to *P. vivax*. In highly endemic sites, the
69 immunological memory resulting from a constant and sustained exposure will impact the performance of SEMs to detect
70 individuals with recent exposure to *P. vivax*. In summary, SEMs that perform well in low transmission sites do not perform
71 as well in high transmission regions.

79 Introduction

80 *Plasmodium vivax* is the most geographically widespread malaria species and the second largest contributor of clinical
81 malaria worldwide. Although the global burden has decreased from 24.5 million cases in 2000 to 7.5 million cases in 2018,
82 *P. vivax* remains a challenging parasite to control and eliminate due to its biology, notably its ability to relapse from
83 dormant liver-stage hypnozoites (1), and its high transmission potential caused by rapid production of gametocytes and
84 short development time in the mosquito vector (2).

85 In tropical regions, the majority of *P. vivax* relapses occur within 9 months of the initial mosquito bite, with longer intervals
86 observed in temperate regions and parts of the sub-tropics (1). Relapses can account for greater than 80% of all *P. vivax*
87 blood-stage infections (3). Moreover, in cross-sectional surveys 90-100% of infections are asymptomatic (4) and up to 67%
88 of infections are not detected by conventional screening tools such as light microscopy (5) because of low parasite density
89 (6, 7). Although the role of asymptomatic infections is not well understood, all *P. vivax* blood-stage infections produce
90 gametocytes and may contribute to maintaining transmission (8).

91 As the number of malaria cases in a region decreases and transmission becomes more heterogeneous, monitoring and
92 mapping of residual transmission pockets becomes increasingly important. Many countries have declared the ambitious
93 goal of eliminating malaria by 2030, and thus, a tool able to identify residual transmission or document the absence of
94 recent transmission is urgently needed. This tool would ideally detect the entire *P. vivax* infectious reservoir composed of
95 individuals with asymptomatic blood-stage infections as well as silent hypnozoite carriers.

96 Light microscopy and qPCR, although informative, are imperfect tools due to the poor sensitivity for detecting low density
97 blood-stage infections and the inability to detect hypnozoite carriers, respectively. The antibody responses mounted to *P.*
98 *vivax* can last weeks to several years after exposure (9, 10) making them an ideal tool for assessing transmission history.
99 Thus, by exploiting antibody longevity to assess recent cumulative exposure, we can use antibody titers to estimate the
100 time since the last exposure and potentially detect hypnozoite carriers (11).

101 Serology has been classically used to estimate malaria risk and endemicity at the population level, detecting temporal and
102 spatial variation in malaria exposure (12), and evaluating malaria control efforts in areas where transmission has

103 decreased to low levels (13). Therefore, serological markers are an appealing tool in the context of malaria elimination
104 because population serology signatures can give us insights of both current and recent exposure to malaria when parasite
105 prevalence surveys are no longer (cost-)efficient because of the small proportion of individuals with detectable blood-
106 stage infection.

107 The lack of standardized methods and antigens has hindered the implementation of serology as a tool for malaria
108 surveillance. Recently, novel Serological Exposure Markers (SEM) to *P. vivax* have been developed and validated in low
109 transmission settings showing a promising application in detecting likely hypnozoite carriers (11). It is however important
110 to understand what factors cause variation in SEMs before their application at population level. Here, using a sero-
111 epidemiological approach, we assess the performance of SEMs to detect recent exposure to *P. vivax* in three different
112 transmission settings. Epidemiological factors such as age, number of detected blood-stage infections and time since the
113 last infection were evaluated to understand how they affect SEM performance.

115 **Methods**

116 **a. Ethics**

117 The Peruvian cohort was approved by the Institutional Ethics Committee from the Universidad Peruana Cayetano Heredia
118 (UPCH) (SIDISI 57395/2013) and from the University of California San Diego Human Subjects Protection Program (Project
119 # 100765). UPCH also approved the use of the Peruvian serum samples in the Walter and Eliza Hall Institute of Medical
120 Research (WEHI) (SIDISI 100873/2017). The Thai cohort was approved by the Ethics Committee of the Faculty of Tropical
121 Medicine, Mahidol University, Thailand (MUTM 2013-027-01). The Brazilian study was approved by the FMT-HVD
122 (51536/2012), by the Brazilian National Committee of Ethics (CONEP) (349.211/2013) and by the Ethics Committee of the
123 Hospital Clínic, Barcelona, Spain (2012/7306). The Human Research Ethics Committee (HREC) at WEHI approved samples
124 for use in Melbourne (#14/02).

125 **b. Field Studies**

126 The Peruvian cohort was conducted in two Amazonian villages in the Loreto Region: San José de Lupuna, and Cahuide
127 (14). Lupuna is located 10 km from Iquitos district (03°44.591'S, 73°19.615'W), a forested area only accessible by river.
128 Cahuide (04°13.785' S, 73°276' W) is located 60 km from Iquitos city on the Iquitos-Nauta road. Villagers work mainly in
129 agriculture, fishing and occasional hunting. In 2016, Malaria cases in Peru represented 14.3% of all cases in South America,
130 from which 96% were reported from Loreto Region (15, 16). Malaria cases have been steadily increasing since 2010-2011,
131 after the cessation of the international financial support program "PAMAFRO", and worsening due to the Loreto flood
132 between 2012-2013 that inundated and damaged many riverine communities (17). Transmission is stable in both Lupuna
133 and Cahuide, with a peak season from November to May (14).

134 A three year-long observational cohort study was conducted over December 2012 – December 2015 in Loreto, Peru. Using
135 home-to-home and community-based screening, all-age asymptomatic volunteers without a recent history of fever or
136 antimalarial drug use were invited to participate in this cohort. A total of 456 volunteers were enrolled and sampled every
137 month over the three year-long cohort with 37 active case detection visits in total. Additionally, 244 participants were
138 enrolled and followed up in the last year of the cohort with 13 case detection visits. A total of 700 volunteers attended
139 the final visit, and 590 serum samples were collected. The PCR prevalence at the beginning of the cohort was 16% for *P.*
140 *vivax* and 2% for *P. falciparum* (18).

141 The Thai cohort was conducted in Kanchanaburi/Ratchaburi provinces (19), a region with low prevalence and with reduced
142 transmission of *P. vivax* in the last 10 years. The Brazilian cohort enrolled participants from Brasileirinho, Ipiranga and
143 Puraquequara, three peri-urban communities in Manaus province, western Amazonas State (20).

144 Year-long observational cohort studies were conducted over 2013-2014 in Kanchanaburi/Ratchaburi provinces, Thailand
145 (19), and 2014 in Brasileirinho, Ipiranga and Puraquequara, three peri-urban communities in Manaus province, western
146 Amazonas State (20). 999 volunteers were enrolled from Thailand and sampled every month over the year-long cohort,
147 with 14 active case detection visits performed in total. 829 volunteers attended the final visit. A total of 1274 residents of
148 all age groups were enrolled from Brazil and sampled every month over the year-long period, with 13 active case detection
149 visits performed in total. 928 volunteers attended the final visit with plasma from 925 available (Table S3).

150 **c. Molecular diagnosis**

151 In the Peruvian cohort, blood samples were collected by finger prick in filter paper and left to dry at room temperature.
152 Dried blood samples (DBS) were stored at -20 °C prior to molecular diagnosis. In the last visit, whole blood samples were
153 collected and serum was separated by centrifugation and kept at -80°C until processing. DNA was isolated from DBS using
154 the E.Z.N.A.® Blood DNA Mini Kit (Omega Bio-tek, Inc., Norcross, GA, US), according to the manufacturer's instructions.
155 Subsequent amplification was performed by a real-time quantitative PCR (qPCR) method using PerfeCTa® SYBR® Green
156 FastMix 1250 (Quanta bio, Beverly, MA, US) as previously described (18). In the Thai and Brazil cohorts, malaria parasites
157 were detected by qPCR as previously described (8, 21).

158 **d. Multiplex serological evaluation**

159 Serum samples from the Peruvian cohort were evaluated following the protocol reported by Longley et al (22) . This
160 protocol was previously validated in other cohorts as well as in this cohort by testing a small group of samples in duplicate.
161 Therefore, serum samples were evaluated in singlicate format (one well per sample).

162 34 expressed full-length proteins were tested (See table S4 for details). They were down-selected from a larger panel as
163 previously reported (11). 30 of the expressed proteins corresponded to erythrocytic stages, one to pre-erythrocytic stages,
164 one to sexual stages, and one to a putative protein.

165 Serum samples from healthy donors from non-endemic regions were used as negative control (n = 274) (11). A standard
166 curve made of pooled plasma from hyper-immune Papua New Guinea adults (serial dilutions ranging from 1:50 to 1:51200)
167 was used in each run for quality control and normalization purposes. The antibody measurements were performed in a
168 Milliplex® platform based on Luminex® technology. Antibody levels were converted from median fluorescence intensity
169 to relative antibody unit (RAU) using a 5-parameter logistic model written in R. Published serological data from the Thai
170 and Brazilian cohorts were compared to Peruvian antibody profiles (11).

171 **e. Statistical analysis**

172 All epidemiological data was obtained from the questionnaires or laboratory tests recorded in the databases from the
173 cohorts in Peru, Thailand and Brazil. A retrospective analysis was performed taking into account the last day of follow up
174 as a point of reference. This was defined as the day of the serum or plasma collection (D0 = day 0).

175 To characterize antibody responses in the Peruvian cohort, multivariate linear regression models were fitted adjusted by
176 confounders. A Bayesian Regression Criterion (BIC) was used to select the model with the best explanatory variables. To
177 test the performance of the SEMs to identify recent *P. vivax* exposure, individuals in the cohorts were categorized
178 according to their history of blood-stage infection. Individuals with at least one qPCR positive *P. vivax* sample in the last 9
179 months were classified as “recently exposed”, whereas those with old infections (> 9 months) or no infections in the time
180 of follow up (13 months for Peru and Brazil, 14 months for Thailand), were classified as “not recently exposed”. Receiver
181 operating characteristic (ROC) curves were used to assess the trade-off between sensitivity and specificity of using single
182 SEMs to identify recent infections. Sensitivity was defined as the proportion of people with recent infections with antibody
183 titers higher than a given cut-off value. Specificity was defined as the proportion of subjects without recent infections with
184 antibody titers lower than the same cut-off value. We used the area under the ROC curve (AUC) value for comparing the
185 test performance given by an antibody response between the three study sites.

186 Linear Discriminant Analysis (LDA) was performed to identify the best combinations of antibody responses for classifying
187 recent infections. A logistic regression model was used to validate the best combination, with cross-validation on disjoint
188 training (2/3 of data) and testing (1/3 of data) data sets, repeated 200 times. The AUC was calculated for each combination.

189 To determine the factors which drive variation in antibody responses, multivariate linear regression models were fitted
190 using: (i) age (a proxy of lifetime exposure); (ii) number of detected blood-stage infections during 13 months (Peru, Brazil)
191 or 14 months (Thailand) of follow up; (iii) time since last blood-stage infection; and (iv) an error term accounting for
192 additional unexplained variation. Data on individuals with at least one blood-stage detection during 13 months was utilized
193 for this purpose. The total variance of each marker was normalized to 1 and was the sum of variance given by both
194 explained and unexplained variance, respectively. The contribution of each factor to the total variance was estimated
195 using the “relaimpo” (<https://CRAN.R-project.org/package=relaimpo>) and “car” ([https://CRAN.R-](https://CRAN.R-project.org/package=car)
196 [project.org/package=car](https://CRAN.R-project.org/package=car)) R packages.

197 Statistical analysis was done using R 3.43 (<https://www.r-project.org/>), and R packages (MASS, ROCR, rpart,
198 randomForest) and Stata packages 12 (StataCorp. 2011. Stata Statistical Software: Release 12. College Station, TX:
199 StataCorp LP.)

200 Results

201 a. Epidemiological characteristics from the Peruvian longitudinal cohort

202 Epidemiological characteristics of the Peruvian study population are summarized in table 1. A total of 590 individuals were
203 enrolled. Of these individuals, 289 lived in Cahuide (CAH, 48.9%) and 301 lived in Lupuna (LUP, 51.1%). The average age
204 of participants was 29.7 years (range: 3 – 85 years old). Individuals from Cahuide were younger than those from Lupuna
205 ($p < 0.01$). The overall female/male rate was 1.39, with similar proportions in both sites (CAH: 1.44, LUP: 1.35). The
206 duration of residency in the community had previously been identified as a risk factor for *P. vivax* infection in these
207 communities (18). Almost 15% ($n = 89$) of participants had recently settled in the communities (<2 years).

208 At the last day of follow up (D0), the prevalence of *P. vivax* (Pv) infections detected by qPCR was 21.2% (LUP: 23.6%, CAH:
209 18.7%), of which only 7% were detected by LM (9 patent infections). There were no significant differences in prevalence
210 among the three age groups ($p > 0.05$). The median parasite density by qPCR was 1.55 parasites/ μ L (IQR: 0.74 – 8.38). In
211 the preceding year, December 2014 to December 2015, a total of 7,612 blood samples were collected during follow-up.
212 Of the collected blood samples, 14.2% (1083/7612) were positive for *P. vivax* by qPCR. Of these qPCR positive samples
213 11.8% (128/1083) were positive by microscopy, and 2.8% (30/1083) exhibited symptoms. In 13 months of follow up,
214 75.3% of individuals experienced at least one blood-stage *P. vivax* infection. There was a significant difference in
215 cumulative PCR prevalence between Cahuide (66.1%) and Lupuna (84.1%) ($p < 0.0001$, χ^2 test) (Figure 1).

216

217

218

219

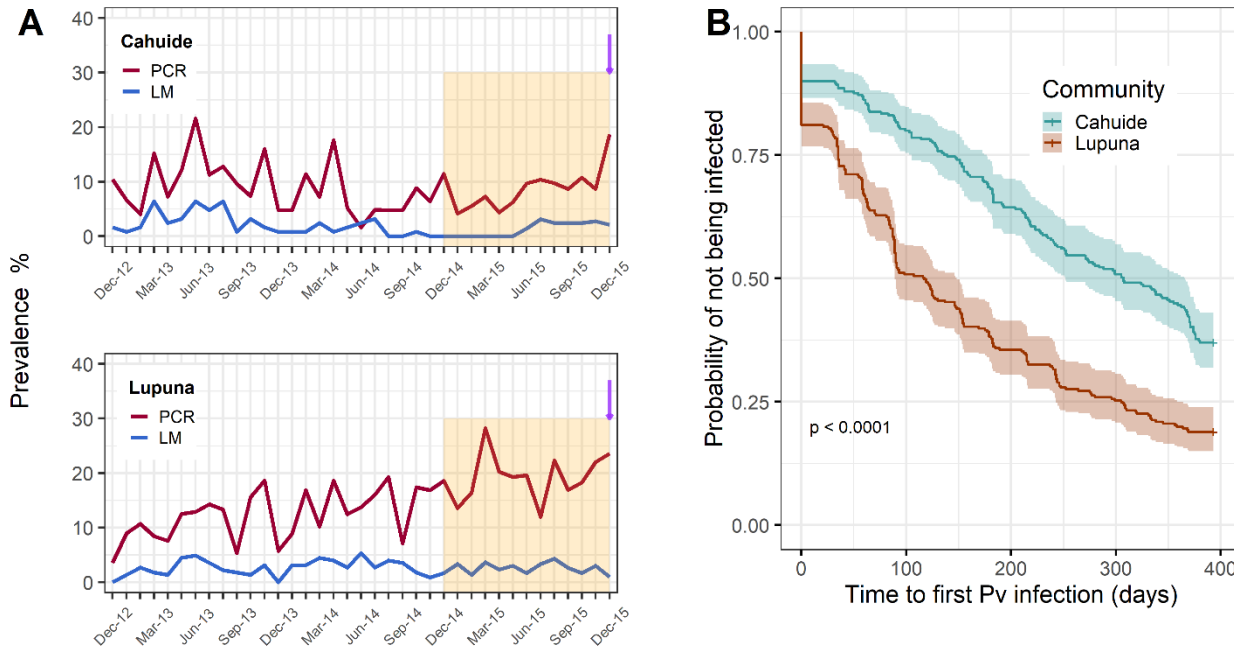
Table 1. Epidemiologic characteristics of the study sites and participants.

Characteristics	Cahuide n = 289	Lupuna n = 301	Total n = 590
Age (median, IQR)**	21.9 (11.3 – 41.0)	29.1 (12.2 – 46.7)	26.0 (11.7 – 45.4)
<15 years old (%)	40.48	31.56	35.93
15-39 years old (%)	33.56	31.56	32.54
≥40 years old (%)	25.95	36.88	31.53
Female sex (%)	59.16	57.47	58.30
Time in community, (%) ****			
<5 years	26.29	3.32	14.58
≥5 years	73.7	96.68	85.42
Forest-related occupation (>18 years old) (%)			
Fishing	0.62	2.67	1.73
Woodcutter	6.83	4.81	5.76
Farmer*	25.46	35.29	30.83
Education (%)			
None*	21.45	14.95	18.13
Primary school	57.10	52.16	54.58
Secondary school**	21.45	32.89	27.29
Infection by LM at D0			
<i>P. vivax</i> (%)	2.08	1.00	1.52
<i>P. falciparum</i> (%)	0	0	0.00
Infection by qPCR at D0 ^a			
<i>P. vivax</i> (%)	18.68	23.58	21.19
<i>P. falciparum</i> (%)	2.77	2.66	2.71
Months of following, n (%)			
13 months****	164 (56.74)	76 (25.24)	240 (40.68)
37 months****	125 (43.25)	225 (74.75)	350 (59.32)
<i>P. vivax</i> density by qPCR at D0 (median, IQR)	1.60 (0.92 – 21.61)	1.39 (0.65 – 4.96)	1.55 (0.74 – 8.38)
Total clinical <i>P. vivax</i> infections, n (%)			
0	279 (96.54)	283 (94.01)	562 (95.25)
1	10 (3.46)	16 (5.31)	26 (4.41)
≥2	0 (0)	2 (0.66)	2 (0.34)
Total <i>P. vivax</i> infections by qPCR in 13 months, n (%)			
0****	98 (33.91)	48 (15.94)	146 (24.74)
1****	102 (35.29)	68 (22.59)	170 (28.81)
2	55 (19.03)	62 (20.60)	117 (19.83)
3*	23 (7.96)	42 (13.95)	65 (11.02)
≥4****	11 (3.80)	81 (26.91)	92 (15.59)
Days since last past <i>P. vivax</i> infection, n (%)			
< 1 month*	65 (22.49)	95 (31.56)	160 (27.12)
1-9 months*	97 (33.56)	131 (43.52)	228 (38.64)

9-13 months	29 (10.03)	27 (8.97)	56 (9.49)
No infection in 13 months****	98 (33.91)	48 (15.94)	146 (24.74)

^a Prevalence includes single – and mixed-species infections D0 = Day zero, day of blood and serum sampling for qPCR diagnosis and Luminex. * p<0.05; ** p<0.01; *** p<0.001; **** p<0.0001

220

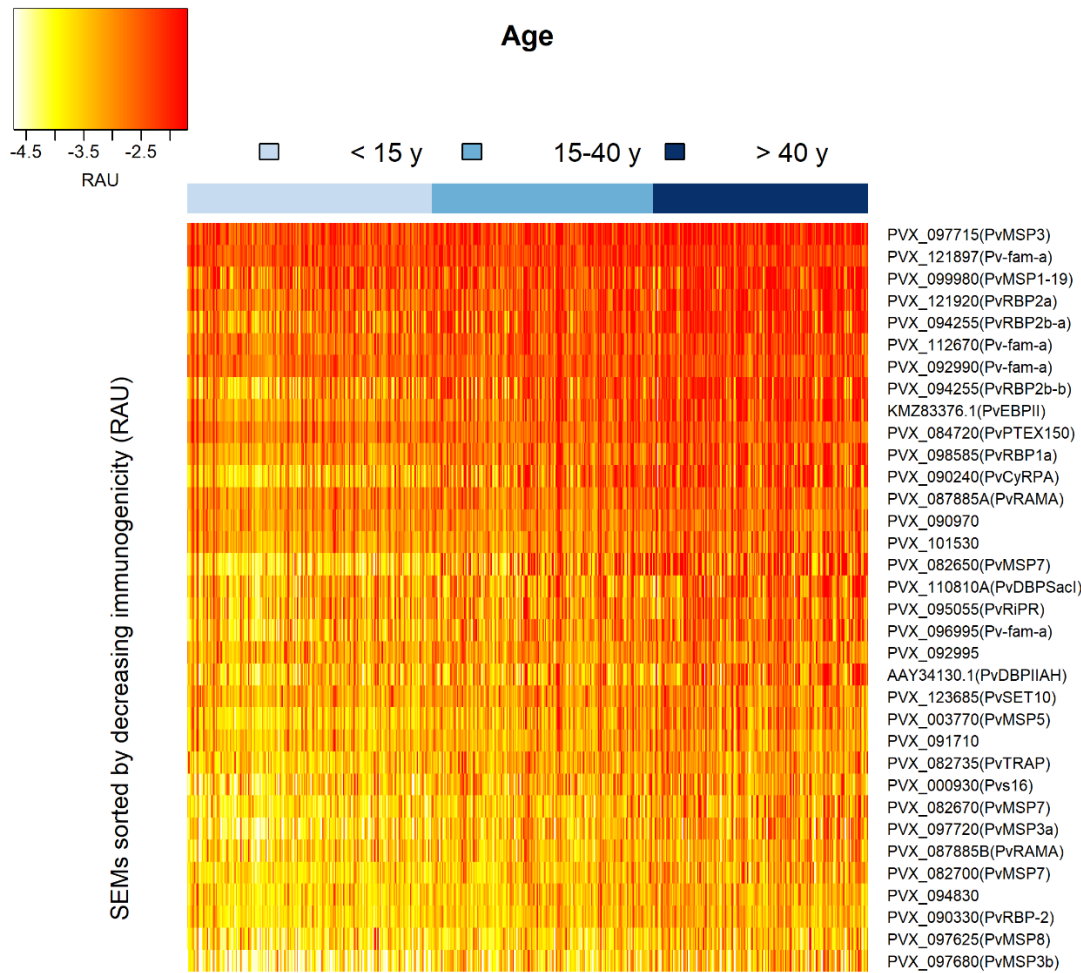


221

222 **Figure 1: Prevalence of *P. vivax* infection in the Peruvian cohort. (A)** Longitudinal prevalence of *P. vivax* infection by light microscopy
 223 or PCR in Cahuide and Lupuna. **(B)** Kaplan-Meier plots showing the time to first *P. vivax* infection by qPCR in individuals from Cahuide
 224 and Lupuna. Shaded areas represent the respective 95% confidence intervals. Retrospective analyses were performed using infection
 225 history over the last year of follow-up, which is indicated by the orange shadow. Day 0 is the last time point of follow-up where
 226 antibody measures were done; it is indicated in panel A by a purple arrow.

227 **b. Profiles of antibody *P. vivax* responses in Peru**

228 In Lupuna geometric mean antibody response was 1.93 times higher than in Cahuide, although the distribution of antibody
 229 responses overlapped between both communities (0.0014 vs. 0.0007; $p < 0.001$, t-test, Figure S2). Henceforth, data from
 230 both communities were combined for subsequent analysis. Antibody responses to 26 out of 34 antigens were positively
 231 associated with concurrent Pv infections (Odds ratio range: 1.38 – 1.99, $p < 0.01$, table S1). Most of the responses to the
 232 tested markers showed a positive correlation with the individual's age (spearman correlation factor range $\rho = 0.143$ –
 233 0.482; $p < 0.001$, Figure 2), indicating a broader antibody repertoire in individuals older than 40 years old.



234

235 **Figure 2: Heatmap of antibody responses to *P. vivax* serological exposure markers.**

236 Antibody responses were strongly correlated to antibodies whose antigens were located in the same parasite location,
 237 showing a similar degree of immunogenicity and pattern of reactivity (Figure S3). For instance, antibody responses to
 238 invasion-related proteins (microneme proteins: (PVX_110810A (PvDBPSacl), AAY34130.1 (PvDBPIIAH), PVX_095055
 239 (PvRiPR), PVX_090240 (PvCyRPA) and KMZ83376.1 (PvEBPII) and rhoptry proteins: (PVX_094255 (PvRBP2b), PVX_098585
 240 (PvRBP1a)) showed 50 to 98% correlation to each other, whereas, lower correlation were found with antigens of surface
 241 proteins (29 – 66%).

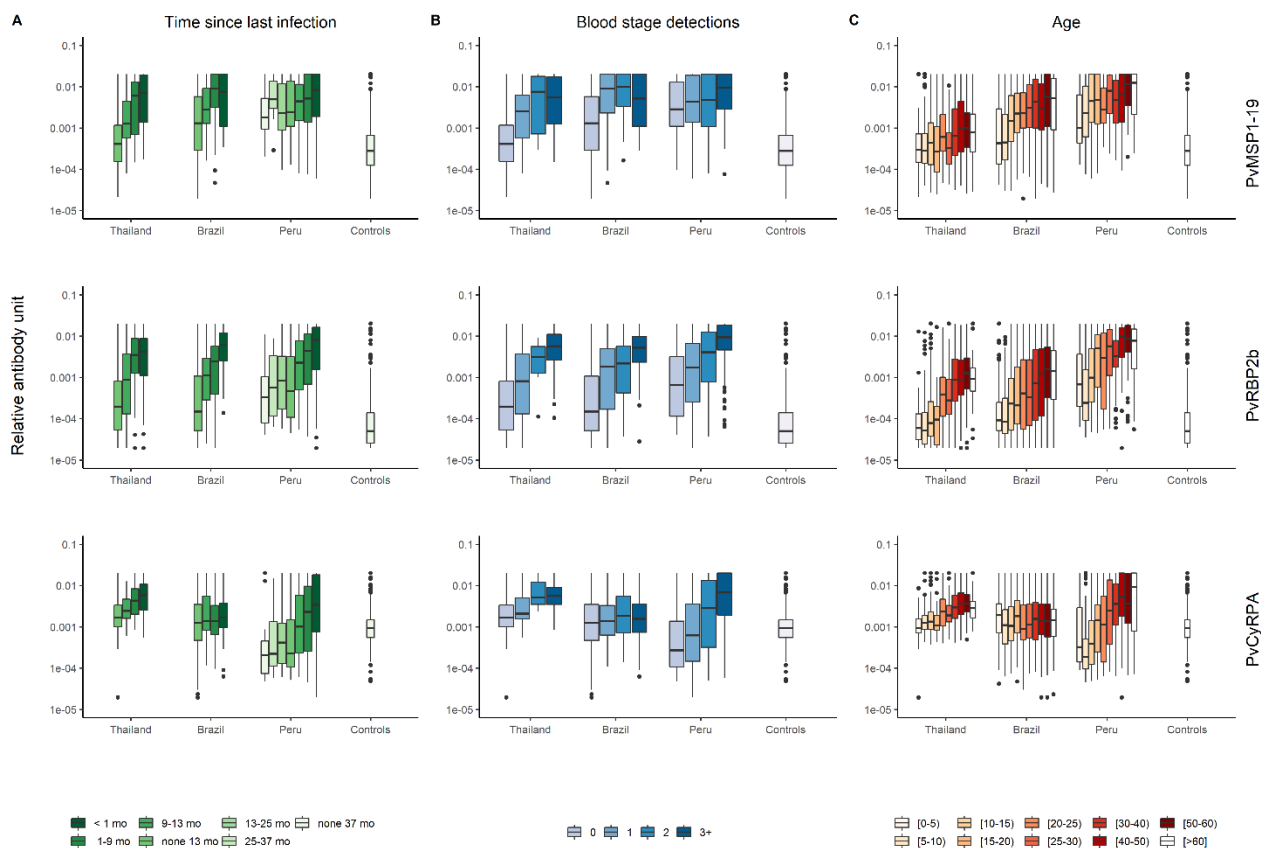
242 In order to identify epidemiological factors that influence the response to SEMs, linear regression models were fitted using
 243 demographic and epidemiologic data. The best explanatory variables were selected by Bayesian Information Criterion
 244 (Table S2). Age was the strongest explanatory factor for 32 out of 34 models of antibody responses (coefficient range:
 245 0.146 – 1.127, $p < 0.01$). For instance, a doubling in age will give a 2.18 (or $2^{1.127}$) increase in antibody levels to

246 PVX_082650 (PvMSP7). Living in Lupuna and being male were associated with high antibody titers to 20 SEMs (coefficient
247 range: 0.096 – 0.538, $p < 0.01$) and 15 SEMs (coefficient range: 0.105 – 0.202, $p < 0.01$), respectively, indicating the high
248 exposure in this community. The number of qPCR infections detected in the last 6 months was an important predictor for
249 28 antibody responses (coefficient range: 0.042 – 0.194 / infection, $p < 0.01$), indicating that the level of antibody response
250 to these antigens depends upon in the intensity of recent exposure. The antibody responses to PVX_099980 (PvMSP1₁₉),
251 PVX_096995 (Pv-fam-a), PVX_094255 (PvRBP2b₁₆₁₋₁₄₅₄ and PvRBP2b₁₉₈₆₋₂₆₅₃), PVX_095055 (PvRiPR) and PVX_087885 were
252 positively associated with the incidence of clinical episodes during the last 6 months of follow up (coefficient: 0.384 –
253 0.505, $p < 0.01$).

254 c. Transmission intensity and average antibody titers to SEM were higher in Peru than Brazil and Thailand

255 At the final time point of follow-up, Peru had the highest prevalence of *P. vivax* by qPCR (21.2%, $p < 0.001$), followed by
256 Brazil (4.2%) and Thailand (3.0%) (Table S3). During the preceding year of follow up, 75.3% of Peruvian individuals
257 experienced at least one infection of *P. vivax* (Pv), followed by Brazil and Thailand where 25.4% and 11.7% of participants
258 had at least one infection. The average antibody titer in the Peruvian cohort was 1.64 times higher than Brazil ($p < 0.001$,
259 t-test) and 2.43 times higher than Thailand ($p < 0.001$, t-test), confirming the existent high exposure burden in the
260 communities from the Peruvian amazon. The higher titers of the Peruvian children (< 10 years old) compared with the
261 same age group from Brazil and Thailand is also consistent with higher *P. vivax* transmission and a more rapid acquisition
262 of antibodies in this population.

263 Antibody levels to 34 Pv antigens positively correlated to the time since last infection ($p < 0.001$, Kruskal-Wallis test, table
264 S8) and the number of blood-stage detections during follow up ($p < 0.001$, Kruskal-Wallis test, table S9). For a selection of
265 three antigens, Figure 3 shows the association between the antibody response measured at the final time point and (i)
266 time since last infection; (ii) number of qPCR positive blood-stage infections detected; and (iii) age. Similar patterns are
267 seen across antibodies to all antigens in all regions. Antibody responses decrease with time since last infection; increase
268 with the number of blood-stage infections detected during one year of follow-up; and increase with age. Anti-CyRPA
269 antibody responses in Brazil provide a notable exception, not exhibiting any significant association with the studied
270 factors.



271

272 **Figure 3: Association of antibody responses to PvMSP1₁₉, PvRBP2b and PvCyRPA with epidemiological features. (A)** Antibody titers
 273 and time since last infection during follow up. **(B)** Antibody titers and number of blood stage infections detected by qPCR. **(C)**
 274 Distribution of antibody titers in function of age groups. Mo: number of months since last infection.

275 **d. Marker selection to detect exposure in the last 9 months**

276 Antibody responses were assessed by their classification performance for detecting blood-stage infection within the last
 277 9 months for each study site. The sensitivity and specificity trade-off of each antigen was tested through the area under
 278 the ROC curve (AUC). The antibody response to PVX_094255 (PvRBP2b₁₆₁₋₁₄₅₄ and PvRBP2b₁₉₈₆₋₂₆₅₃) was the top marker for
 279 the three study sites and for the combined data set (table S4, table S5). At multi-population level, the markers that ranked
 280 in the top 5 were the antibody responses to PVX_094255 (PvRBP2b), PVX_121920 (PvRBP2a), PVX_087885 (PvRAMA),
 281 PVX_099980 (PvMSP1₁₉) and PVX_097715 (hypothetical PvMSP3) (Table S4).

282

283

284

Table 2. Geometric mean titer to the top serological markers across the study sites

Antibody response	Negative controls		Thailand		Brazil		Peru		AUC
	GMT*	95% CI*	GMT	95% CI	GMT	95% CI	GMT	95% CI	
PVX_094255 (PvRBP2b)	0.08	(0.02, 6.65)	0.28	(0.02, 12.20)	0.40	(0.02, 18.80)	1.96	(0.06, 20.00)	0.80
PVX_121920 (PvRBP2a)	0.49	(0.09, 20.00)	0.53	(0.09, 18.90)	1.12	(0.16, 20.00)	3.64	(0.46, 20.00)	0.77
PVX_087885 (PvRAMA)	0.07	(0.02, 1.76)	0.59	(0.07, 5.96)	2.15	(0.36, 20.00)	0.95	(0.11, 17.60)	0.76
PVX_099980 (PvMSP1 ₁₉)	0.33	(0.04, 17.20)	0.59	(0.04, 20.00)	1.80	(0.06, 20.00)	4.02	(0.14, 20.00)	0.76
PVX_097715 (PvMSP3) ^a	0.88	(0.13, 20.00)	0.38	(0.06, 5.27)	0.24	(0.04, 4.49)	0.39	(0.06, 7.76)	0.76
PVX_090240 (PvCyRPA)	1.02	(0.2, 20.00)	2.12	(0.49, 20.00)	1.38	(0.09, 20.00)	1.30	(0.06, 20.00)	0.58

Abbreviations: GMT = Geometric mean titer; 95% CI = 95% confidence interval. * Data of relative antibody titers interpolated from standard curves were geometric mean with 95% confidence interval (CI). IgG levels were multiplied by 1000. AUC values represent the estimates in the combined data set. ^a Hypothetical PvMSP3.

285

286

287

288

289

290

291

292

293

294

295

296

297

298

299

300

301

302

303

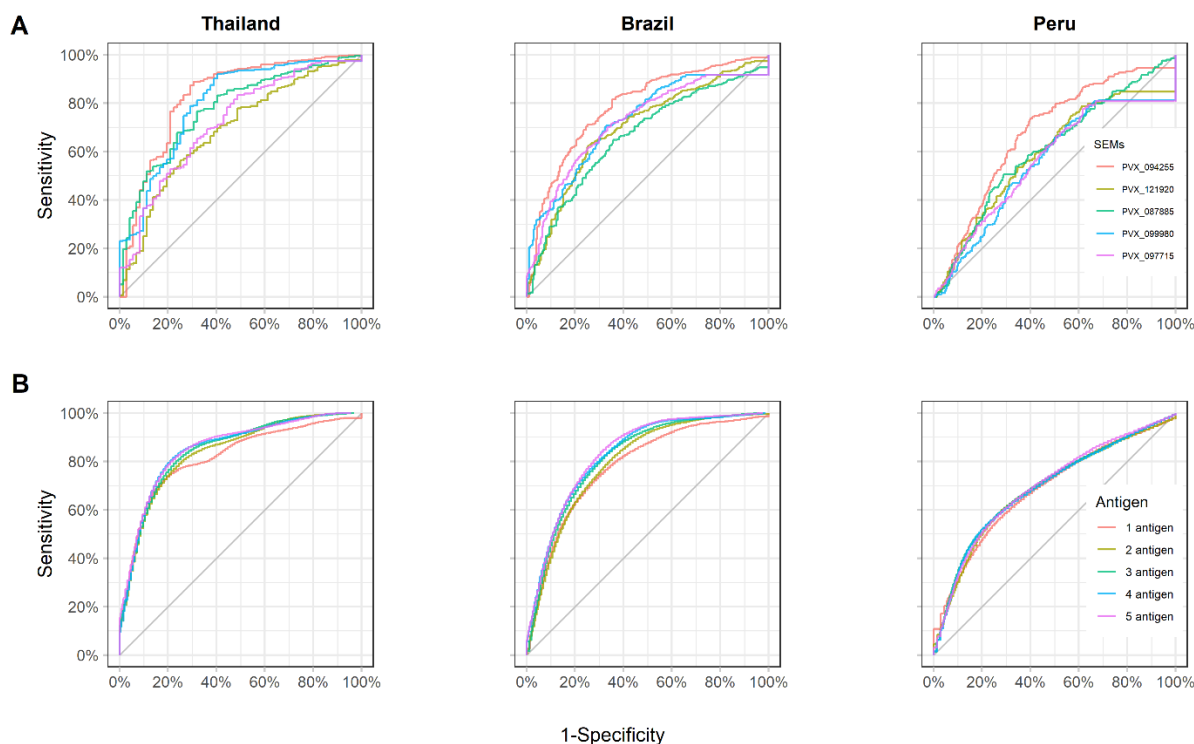
The antibody levels to the two constructs of PvRBP2b were highly correlated, so we excluded the PvRBP2b construct with the lower level of accuracy (PvRBP2b₁₉₈₆₋₂₆₅₃). At a population level, the performance of antibody responses to PVX_094255 (PvRBP2b₁₆₁₋₁₄₅₄) for classifying recent infections was better in Thailand (AUC = 0.83) and Brazil (AUC = 0.79), than in Peru (AUC = 0.68) (Figure 4A). Moreover, there were markers, such as PVX_099980 (PvMSP1₁₉) that showed good performance only in Thailand and Brazil, and others such as PVX_090240 (PvCyRPA) that performed well only in Peru. The performance of the antibody responses to PVX_094255B (PvRBP2b), PVX_090240 (PvCyRPA) and PVX_099980 (PvMSP1₁₉) for detecting exposure to *P. vivax* in different timeframes remained stable within the year of follow up (Fig S4).

The discriminative performance of the 34 markers in the combined data set showed an inverse relationship with their immunogenicity, i.e. those markers with reported moderate immunogenicity like PvRBP proteins ranked first, followed by those with high immunogenicity like PvRAMA and PvMSP proteins (23, 24).

e. Performance to detect recent exposure using combinations of antibody responses

While antibody responses to single antigens are informative for detecting recent exposure, a combination of antibody responses may lead to improved sensitivity and specificity. Using a Linear Discriminant Analysis (LDA) classification algorithm, models including up to five antibody responses were tested for maximizing information of exposure in the last 9 months. The combinations of antibody responses that were most informative of recent exposure were cross-validated, and performance plotted using ROC curves. The top combinations of antibody responses per country were the following: Thailand: PvRBP2b, PvRBP2a, Pvs16, histone-lysine N-methyltransferase SET10 and PvMSP1₁₉ (AUC = 0.87); Brazil: PvRBP2b, hypothetical PvMSP3, PvRAMA, PVX_091710 and PVX_094830 (AUC = 0.85); Peru: PvCyRPA, PvRBP1a,

304 PVX_090970, and the members from the *P. vivax* Tryptophan Rich Antigens (PvTRAG or Pv-fam-a) family PVX_096995 and
305 PVX_092995 (AUC = 0.72). The top combinations of antibody responses for the combined data was PvRBP2b, Pvs16,
306 PVX_091710, PVX_084720 (PTEX150) and PVX_094830 (AUC = 0.86). As expected, the multi-antibody response models
307 performed better than the single antibody ones; although to a less extent for Peru (Figure 4B).



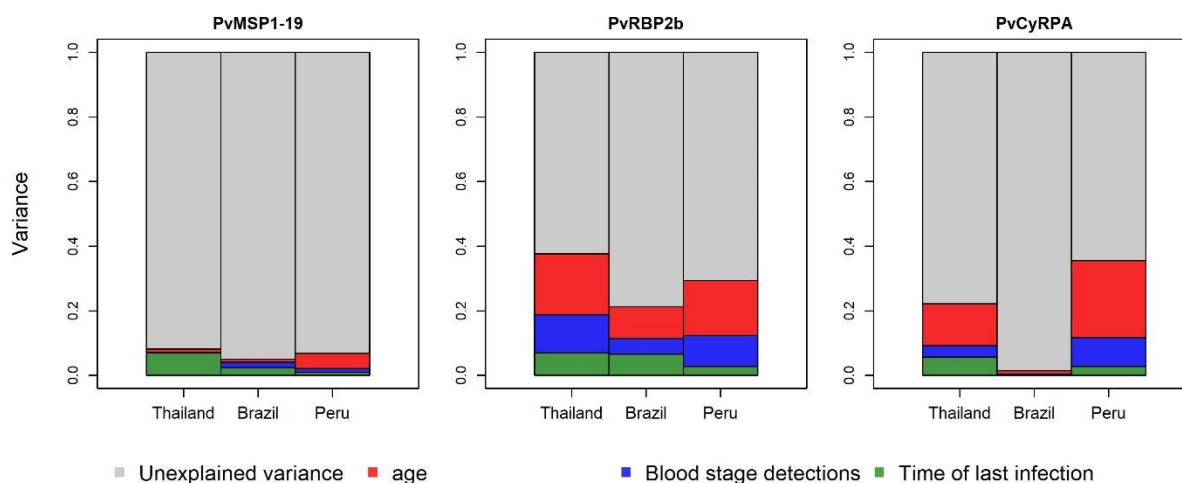
308

309 **Figure 4: Diagnostic performance to classify recent exposure using information of a single – or multi - antibody response. (A)**
310 Receiver operating characteristic (ROC) curve displays the diagnostic performance of 5 top antibody responses: PVX_094255
311 (PvRBP2b), PVX_121920 (PvRBP2a), PVX_087885 (PvRAMA), PVX_099980 (PvMSP1₁₉) and PVX_097715 (hypothetical PvMSP3) in the
312 study sites. (B) ROC curves displaying the diagnostic performance to detect recent infections given by the 1- to 5- antibody
313 response combinations per study site.

314 f. Determinants of variation of antibody responses

315 The proportion of explained variance of antibody responses was different among sites and markers. We focused on
316 PVX_094255B (PvRBP2b), PVX_090240 (PvCyRPA) and PVX_099980 (PvMSP1₁₉) as antigen examples due to their
317 documented differential immunogenicity (22, 25, 26). For antibody responses to PvRBP2b the proportion of the variance
318 explained was 37% in Thailand, 29% in Peru, and 21% in Brazil (Figure 5). Age (a proxy for lifetime exposure) accounted
319 for the largest proportion of explained variance: 19% in Thailand, 9% in Brazil, and 16% in Peru. The time since last infection
320 explained 7% of the variance in Thailand, 7% of the variance in Brazil, and only 3% in Peru. The intensity of exposure in
321 the last year accounted for 12% of the explained variance in Thailand, 5% in Brazil, and 10% in Peru. The studied factors

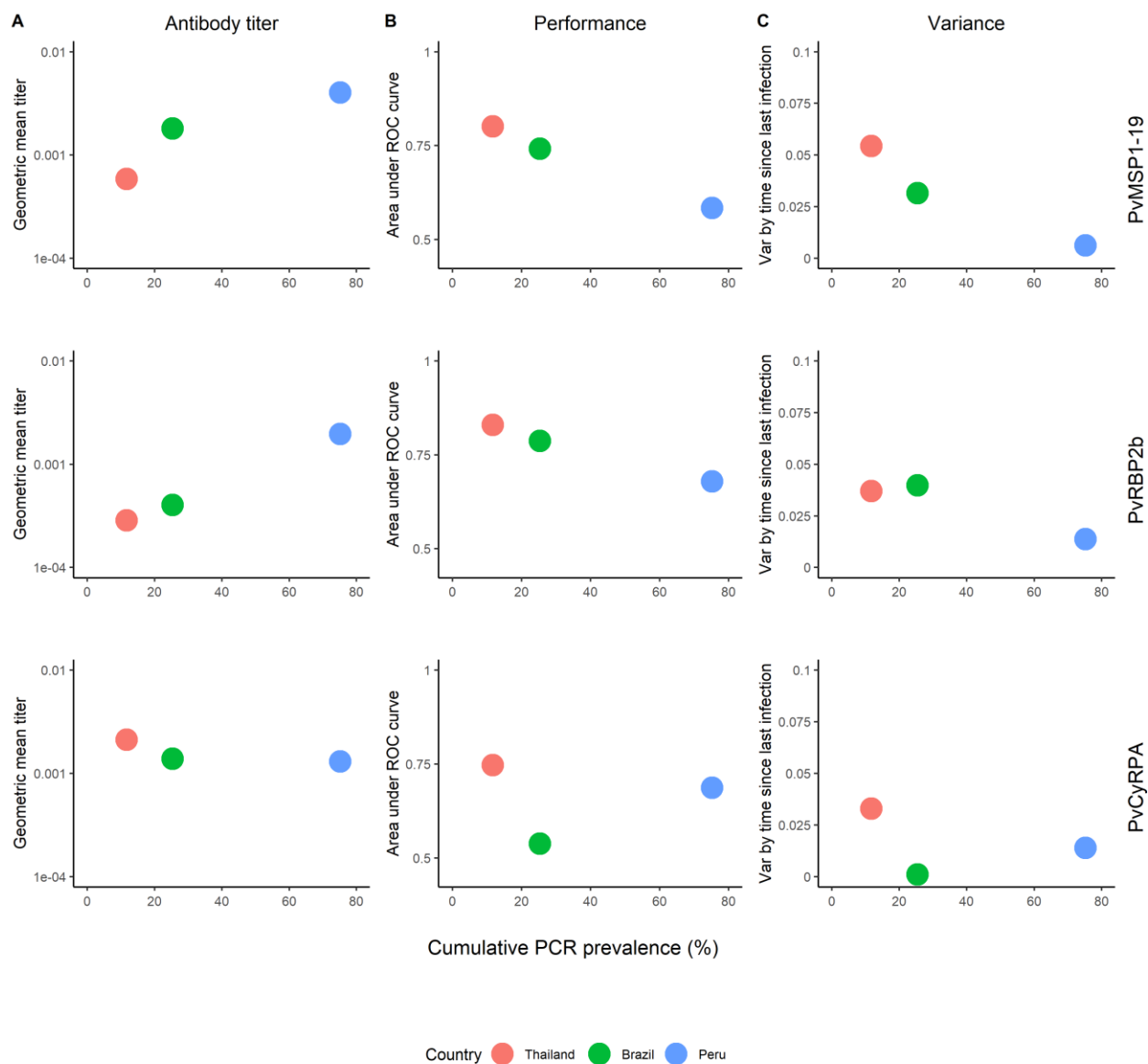
322 explained substantially less of the variance in anti-PvMSP1₁₉ antibody responses. This is most likely due to the high
323 immunogenicity of PvMSP1₁₉ causing the generation of strong antibody responses after few infections. The explained
324 variance of the antibody response to PvCyRPA represented 35% of the total variance in Peru, 22% in Thailand and only
325 1.5% in Brazil. Age was the most important driver of the antibody response to PvCyRPA in Peru (0.35) followed by Thailand
326 (0.13), and Brazil (0.01).



327
328 **Figure 5: Contribution of recent and lifetime exposure to the variance of antibody responses to PvMSP1₁₉, PvRBP2b and PvCyRPA**
329 **across the study sites.** Panels represent the variance estimated for each marker. The area of each colored bar is proportional to the
330 variance explained by known and unknown factors. Red bars: variance explained by individual's age. Blue bars: variance explained by
331 number of blood stage detections by qPCR during 13 months of follow up. Green bars: variance explained by time since last infection
332 (days). Grey bars: unexplained variance.

333 We assessed the suitability of serological markers for identifying recent infection across the 3 transmission settings
334 (differentiated by cumulative PCR prevalence), by evaluating the geometric mean antibody levels to PvMSP1₁₉, PvRBP2b
335 and PvCyRPA, and their performance at classifying recent exposure (Figure 6). The geometric mean antibody titer to
336 PvMSP1₁₉ and PvRBP2b increased with the cumulative PCR prevalence but did not for PvCyRPA. The performance to detect
337 recent exposure (AUC value) of PvMSP1₁₉ and PvRBP2b was inversely correlated to cumulative PCR prevalence, but not
338 for PvCyRPA. The variance explained by the time since last infection decreased with the cumulative PCR prevalence.

339 With each cohort contributing a single data point, it is challenging to assess the significance of these relationships.
340 Nonetheless, these findings lead us to conclude that these *P. vivax* SEMs are most suitable in low transmission settings
341 where population level antibody titers are low, and a high proportion of the total variation in measured antibody titre is
342 explained by the time since last *P. vivax* infection.



343

344

Figure 6: Association of cumulative PCR prevalence and antibody responses to PvMSP1-19, PvRBP2b and PvCyRPA. (A) Association of cumulative PCR prevalence and the geometric mean titer of antibody responses. **(B)** Association of cumulative PCR prevalence and the area under the ROC curve. **(C)** Association of cumulative PCR prevalence and the variance explained by the time since last infection.

347

348

349

350

351 Discussion

352 The use of serology in malaria research has been limited due to the lack of standardized techniques, well-developed
353 antigenic markers, and validation in various transmission scenarios. With the potential for malaria eradication in many
354 endemic countries, a tool able to both identify pockets of residual transmission and certify the malaria free status (in
355 elimination settings) is urgently needed. Here, we evaluated the antibody responses to 34 novel *Plasmodium vivax*
356 antigens in participants from a longitudinal cohort implemented in a high transmission setting in Peru, and made
357 comparisons to data from low to moderate transmission settings in Thailand and Brazil (11).

358 In the three cohorts, individuals with blood-stage infections detected in the last 9 months had significantly higher antibody
359 titers than those with older infections, however, the performance of SEM to classify recent exposure was lower in Peru
360 than in Thailand and in Brazil. The effect of malaria transmission on antibody responses is still poorly understood (12), our
361 data showed that antibody responses to serological markers of recent exposure can be influenced by the transmission
362 intensity of the studied population. Whilst the geometric mean titer of most antibody responses were positively correlated
363 with the cumulative PCR prevalence of each study site, the differences of antibody titers between positive PCR and
364 negative PCR groups were highly significant in Thailand and Brazil but less pronounced in Peru, suggesting a slow decay of
365 antibody responses in currently non-infected people in high transmission settings. This is also evidenced by the
366 comparatively high antibody responses in Peruvians with an absence of blood-stage infections during one year of follow-
367 up. Furthermore, our results supported the fact that the acquisition rate of antibody responses is faster in high
368 transmission intensity sites, a phenomenon previously described. For example, King *et al* showed that the antibody
369 responses repertoire to *P. vivax* and *P. falciparum* antigens was broader with corresponding higher antibody levels in
370 subjects residing in high vs low transmission conditions (27). Anti-malaria antibodies are mostly short-lived (28), but their
371 longevity is antigen specific (29) and may vary according to the background immunity and transmission intensity of the
372 studied population (30). In the cases of Merozoite Surface Protein-1 (PvMSP1) of *P. vivax* antibody responses can last up-
373 to 30 years in sites where there have been sufficient past level of exposure (31). The antibody longevity is maintained by
374 memory B cells that upon re-exposure rapidly proliferate and differentiate into antibody secretory cells, which greatly
375 boosting antibody levels (32). In settings of low transmission, *P. vivax* infections appear to induce long-lasting B memory

376 but with corresponding relatively short-lived antibody responses (9, 10). In high transmission settings both memory and
377 antibody responses appear to be long-lived. A plausible explanation of the high antibody levels in the Peruvian cohort is
378 that frequent new infections and relapses would boost the antibody response baseline in the Peruvian population and
379 that would result in a slow decay of these responses (33). In light of these broad associations between transmission
380 intensity and natural acquisition of immunity, we thus hypothesize that the differential performance of SEMs in the three
381 study sites are likely due to the differences in malaria transmission intensity. In Thailand and Brazil, where the prevalence
382 is low, it is likely that the immune repertoire is smaller and antibody responses are more short-lived. In Peru, the high
383 antibody titers in the cohort individuals suggests a consistently high exposure to *P. vivax*, which is expected to elicit a
384 broad repertoire of long-life antibodies.

385 In our study, antibody titers increased with individuals' age. This could have two possible explanations. On one hand, this
386 antibody levels – age relationship would reflect the cumulative nature of the immune response to *P. vivax* and highlight
387 age as a surrogate marker of life-time exposure. This relationship has been exploited to assess malaria transmission
388 intensity in endemic settings through modelling seroconversion rates which are closely correlated with entomological
389 inoculation rate (EIR) (12, 34). On the other hand, the association of antibody responses and age may also reflect the
390 epidemiological characteristics of each population. The transmission of *P. vivax* in Thailand is mostly related to forest jobs
391 in adults (19), whereas in Brazil and Peru, the transmission is both peri-domestic and work-related (35) (Narimane paper).
392 Our linear regression model showed that the recency and the intensity of exposure in the last year were important drivers
393 of the antibody response to the top markers, PvRBP2b and PvMSP1₁₉, in Thailand and Brazil, whereas the cumulative
394 exposure, as indicated by individuals' age, drove most of the antibody response in Peru. Thus, the previous life-time
395 exposure resulting of sustained transmission would influence SEMs performance in high-transmission settings.

396 Besides previous life-time exposure, the immunogenicity of markers and their interplay with transmission intensity were
397 factors that affected the SEM performance. For example, the levels of antibody responses to PvRBP2b were positively
398 correlated with the number of blood-stage detections and recency of exposure in the three cohorts, indicating that
399 multiple antigen exposure is needed in order to boost an antibody response, and thus showcasing the moderate
400 immunogenicity of this antigen. PvRBP2b belongs to PvRBP family, membrane proteins involved in the irreversible

401 adhesion to reticulocytes (36). Reports on naturally acquired immunity (NAI) against PvRBP2b have shown that antibody
402 responses correlated with age, infection status and clinical protection (25, 26, 37). Previous reports have shown that
403 antibodies responses against other members of the PvRBP family (i.e. PvRBP1a, PvRBP2a, PvRBP2c and PvRBP2-P2) also
404 correlated with intensity of exposure and increased at a slower rate than antibodies against highly immunogenic antigens
405 such as anti-PvDBP118 (38) or PvCSP (22). Recently, longitudinal studies have proportioned insightful information on the
406 longevity of antibody response against PvRBP2b, estimating a mean half-life of ~ 3.8 months in cohorts from Thailand and
407 Brazil(11), indicating the moderate immunogenicity of this antigen and persistence of antibodies even in low transmission
408 settings. These characteristics make anti-PvRBP2b antibodies the best performing SEMs for classifying recent exposure in
409 all three cohorts.

410 Differently to PvRBP2b, antibody responses to PvMSP1-19 and PvCyRPA showed no correlation with the recency and
411 intensity of exposure in the last year in Peru and Brazil, respectively. Previous reports showed that the *P. falciparum*
412 orthologs of MSP1₁₉ (19 kDa C-terminal region of MSP1) elicit more robust IgG responses than CyRPA in natural exposed
413 individuals (39), indicating that CyRPA is not a major target of naturally acquired immune responses. The difference in
414 immunogenicity of these antigens could be linked to their cellular localization. Whereas MSP1 is located on the merozoite
415 surface and constantly exposed to the immune system, CyRPA localizes the intracellular micronemes (40), giving
416 accessibility to the humoral surveillance only during the short period of invasion. Long-lived antibody responses to
417 PvMSP1₁₉ have been reported in natural exposed people from Thailand (10), Brazil (41) and Peru (42). In contrast, there
418 is no report on the longevity of anti- PvCyRPA antibodies. In our study, the lack of a recent exposure trend for PvCyRPA in
419 Brazil may be related to the short-live nature of the response caused by the low immunogenicity of this antigen and the
420 lack of sufficient exposure to boost a humoral response in inhabitants from this setting. On the other hand, the lack of
421 association of PvMSP1-19 with recent infections in Peru could be related to the long-life antibodies caused by the high
422 immunogenicity of this antigen and the long-term exposure in this setting.

423 The use of highly immunogenic antigens such as PvMSP1₁₉ in serological tools has been advised in areas of low
424 transmission, where the long-term persistence of antibody levels may be suitable for estimating changes in transmission
425 intensity (12). Lowly immunogenic markers with shorter half-lives like PvCyRPA would be suitable for estimating the time

426 of the last infection in high endemicity scenarios. Our antigen panel consists of constructs whose antibody responses
427 longevity spanned up to 6 months in the absence of detectable recurrent infections in longitudinal cohorts in two low
428 transmission sites (43) and whose performance has been validated to detect recent exposure in the context of low
429 transmission intensity (11). Our new findings suggest that the reactivity to these markers may not necessarily reflect
430 recent exposure in high-transmission scenarios like Peru, and that the constant, long-term exposure to *P. vivax* may result
431 in the long-lived IgG profiles in the absence of ongoing *P. vivax* infection in that cohort.

432 Finally, our study highlights the importance of an in-depth immunological dissection of the antibody signatures in diverse
433 transmission contexts of *P. vivax*. Such an exploration will allow to understand the antibody kinetics in a context of ongoing
434 transmission and to select suitable markers of recent exposure in high transmission settings. Field studies have shown
435 that IgG subclass profiles to *P. falciparum* (44) and *P. vivax* (45-47) differed among malaria antigens and that the subclass
436 predominance is influenced by age and increasing exposure to infection. High IgG1 and IgG3 levels have been associated
437 with long-term exposure to *P. vivax* (37, 47). To improve performance of SEM, further information could be gained by
438 testing IgG subclasses responses and their ability to discriminate recent from distant exposure to *P. vivax* in areas with
439 history of high past transmission.

440 In summary, we have shown that the antibody responses to SEM will mostly reflect exposure in the last 9 months in areas
441 of low transmission, whereas the responses will mirror a combination of both recent and cumulative exposure in areas of
442 high transmission. By combining both highly and less immunogenic antigens, our panel would be able to detect recent
443 exposure in low transmission or pre-elimination settings, and if complemented with antibody acquisition models (48),
444 would be a suitable tool for population surveillance and detection of transmission changes in high and heterogeneous
445 endemicity settings.

446

447 **Author contributions**

448 M.T.W., R.J.L., D.G., and I.M. designed the study. W.M., M.L., J.S., A.LL- C, J.V., and D.G. conducted the cohort studies.
449 J.R. performed molecular diagnosis and antibody measurements. J.R., R.J.L., and M.W. conducted data management and
450 analysis. J.R., M.T.W., and I.M. wrote the manuscript.

451

452 **Acknowledgments**

453 We acknowledge the field teams that contributed to sample collection and qPCR assays, including Carlos Fernandez-
454 Miñope, Katherine Alcedo, Jhonatan Alarcon-Baldeon, Juan Jose Contreras-Mancilla. Jessica Brewster is thanked for
455 performing Luminex assays.

456

457 **Funding**

458 This work has been supported by FIND with funding from the Australian and British governments. This work was made
459 possible through Victorian State Government Operational Infrastructure Support and Australian Government National
460 Health and Medical Research Council (NHMRC) Independent Research Institute Infrastructure Support Scheme. Cohort
461 samples were derived from field studies in Peru originally funded by cooperative agreement U19AI089681 from the United
462 States Public Health Service, National Institutes of Health/National Institute of Allergy and Infectious Diseases, as the
463 Amazonian International Center of Excellence in Malaria Research. I.M. is supported by an NHMRC Senior Research
464 Fellowship (1043345). J.R. is supported by the Pasteur - Paris University (PPU) International PhD Program. R.J.L. received
465 the Page Betheras Award from WEHI to provide funding for technical support for this project during parental leave.

466

467 References

- 468 1. White NJ, Imwong M. Relapse. *Adv Parasitol.* 2012;80:113-50.
- 469 2. Mueller I, Galinski MR, Baird JK, Carlton JM, Kochar DK, Alonso PL, et al. Key gaps in the knowledge of *Plasmodium vivax*,
470 a neglected human malaria parasite. *Lancet Infect Dis.* 2009;9(9):555-66.
- 471 3. Robinson LJ, Wampfler R, Betuela I, Karl S, White MT, Li Wai Suen CS, et al. Strategies for understanding and reducing
472 the *Plasmodium vivax* and *Plasmodium ovale* hypnozoite reservoir in Papua New Guinean children: a randomised placebo-
473 controlled trial and mathematical model. *PLoS Med.* 2015;12(10):e1001891.
- 474 4. Anstey NM, Douglas NM, Poespoprodjo JR, Price RN. *Plasmodium vivax*: clinical spectrum, risk factors and pathogenesis.
475 *Adv Parasitol.* 2012;80:151-201.
- 476 5. Cheng Q, Cunningham J, Gatton ML. Systematic review of sub-microscopic *P. vivax* infections: prevalence and
477 determining factors. *PLoS Negl Trop Dis.* 2015;9(1):e3413.
- 478 6. Lin E, Kiniboro B, Gray L, Dobbie S, Robinson L, Laumaea A, et al. Differential patterns of infection and disease with *P.*
479 *falciparum* and *P. vivax* in young Papua New Guinean children. *PLoS One.* 2010;5(2):e9047.
- 480 7. Mueller I, Galinski MR, Tsuboi T, Arevalo-Herrera M, Collins WE, King CL. Natural acquisition of immunity to *Plasmodium*
481 *vivax*: epidemiological observations and potential targets. *Adv Parasitol.* 2013;81:77-131.
- 482 8. Wampfler R, Mwingira F, Javati S, Robinson L, Betuela I, Siba P, et al. Strategies for detection of *Plasmodium* species
483 gametocytes. *PLoS One.* 2013;8(9):e76316.
- 484 9. Kochayoo P, Changrob S, Wangriatisak K, Lee SK, Chootong P, Han ET. The persistence of naturally acquired antibodies
485 and memory B cells specific to rhoptry proteins of *Plasmodium vivax* in patients from areas of low malaria transmission.
486 *Malar J.* 2019;18(1):382.
- 487 10. Wipasa J, Suphavilai C, Okell LC, Cook J, Corran PH, Thaikla K, et al. Long-lived antibody and B Cell memory responses
488 to the human malaria parasites, *Plasmodium falciparum* and *Plasmodium vivax*. *PLoS Pathog.* 2010;6(2):e1000770.
- 489 11. Longley RJ, White MT, Takashima E, Brewster J, Morita M, Harbers M, et al. Development and validation of serological
490 markers for detecting recent *Plasmodium vivax* infection. *Nat Med.* 2020;26(5):741-9.
- 491 12. Drakeley CJ, Corran PH, Coleman PG, Tongren JE, McDonald SL, Carneiro I, et al. Estimating medium- and long-term
492 trends in malaria transmission by using serological markers of malaria exposure. *Proc Natl Acad Sci U S A.*
493 2005;102(14):5108-13.
- 494 13. Drakeley C, Cook J. Chapter 5. Potential contribution of sero-epidemiological analysis for monitoring malaria control
495 and elimination: historical and current perspectives. *Adv Parasitol.* 2009;69:299-352.
- 496 14. Rosas-Aguirre A, Guzman-Guzman M, Gamboa D, Chuquiyauri R, Ramirez R, Manrique P, et al. Micro-heterogeneity of
497 malaria transmission in the Peruvian Amazon: a baseline assessment underlying a population-based cohort study. *Malar*
498 *J.* 2017;16(1):312.
- 499 15. WHO. World Malaria Report 2017. Geneva Switzerland: World Health Organization. 2017.
- 500 16. MINSa. Ministerio de Salud del Perú: Boletín epidemiológico del Perú 2016 SE 52. 2016;25(52):1178 – 86.
- 501 17. Rosas-Aguirre A, Gamboa D, Manrique P, Conn JE, Moreno M, Lescano AG, et al. Epidemiology of *Plasmodium vivax*
502 Malaria in Peru. *Am J Trop Med Hyg.* 2016;95(6 Suppl):133-44.
- 503 18. Carrasco-Escobar G, Miranda-Alban J, Fernandez-Minope C, Brouwer KC, Torres K, Calderon M, et al. High prevalence
504 of very-low *Plasmodium falciparum* and *Plasmodium vivax* parasitaemia carriers in the Peruvian Amazon: insights into
505 local and occupational mobility-related transmission. *Malar J.* 2017;16(1):415.
- 506 19. Longley RJ, Reyes-Sandoval A, Montoya-Diaz E, Dunachie S, Kumpitak C, Nguitrage W, et al. Acquisition and Longevity
507 of Antibodies to *Plasmodium vivax* Preerythrocytic Antigens in Western Thailand. *Clin Vaccine Immunol.* 2016;23(2):117-
508 24.
- 509 20. Monteiro W, Karl S, al. e. Prevalence and force of *Plasmodium vivax* and *Plasmodium falciparum* blood stage infection
510 and associated clinical malaria burden in the Brazilian Amazon. *PLoS One.* 2020;(in press).
- 511 21. Rosanas-Urgell A, Mueller D, Betuela I, Barnadas C, Iga J, Zimmerman PA, et al. Comparison of diagnostic methods for
512 the detection and quantification of the four sympatric *Plasmodium* species in field samples from Papua New Guinea. *Malar*
513 *J.* 2010;9:361.

- 514 22. Longley RJ, Franca CT, White MT, Kumpitak C, Sa-Angchai P, Gruszczyk J, et al. Asymptomatic Plasmodium vivax
515 infections induce robust IgG responses to multiple blood-stage proteins in a low-transmission region of western Thailand.
516 Malar J. 2017;16(1):178.
- 517 23. Changrob S, Wang B, Han JH, Lee SK, Nyunt MH, Lim CS, et al. Naturally-Acquired Immune Response against
518 Plasmodium vivax Rhoptry-Associated Membrane Antigen. PLoS One. 2016;11(2):e0148723.
- 519 24. Lu F, Li J, Wang B, Cheng Y, Kong DH, Cui L, et al. Profiling the humoral immune responses to Plasmodium vivax infection
520 and identification of candidate immunogenic rhoptry-associated membrane antigen (RAMA). J Proteomics. 2014;102:66-
521 82.
- 522 25. He WQ, Karl S, White MT, Nguitragool W, Monteiro W, Kuehn A, et al. Antibodies to Plasmodium vivax reticulocyte
523 binding protein 2b are associated with protection against P. vivax malaria in populations living in low malaria transmission
524 regions of Brazil and Thailand. PLoS Negl Trop Dis. 2019;13(8):e0007596.
- 525 26. Franca CT, White MT, He WQ, Hostetler JB, Brewster J, Frato G, et al. Identification of highly-protective combinations
526 of Plasmodium vivax recombinant proteins for vaccine development. Elife. 2017;6.
- 527 27. King CL, Davies DH, Felgner P, Baum E, Jain A, Randall A, et al. Biosignatures of Exposure/Transmission and Immunity.
528 Am J Trop Med Hyg. 2015;93(3 Suppl):16-27.
- 529 28. Ndungu FM, Olotu A, Mwacharo J, Nyonda M, Apfeld J, Mramba LK, et al. Memory B cells are a more reliable archive
530 for historical antimalarial responses than plasma antibodies in no-longer exposed children. Proc Natl Acad Sci U S A.
531 2012;109(21):8247-52.
- 532 29. Akpogheneta OJ, Duah NO, Tetteh KK, Dunyo S, Lanar DE, Pinder M, et al. Duration of naturally acquired antibody
533 responses to blood-stage Plasmodium falciparum is age dependent and antigen specific. Infect Immun. 2008;76(4):1748-
534 55.
- 535 30. Elliott SR, Fowkes FJ, Richards JS, Reiling L, Drew DR, Beeson JG. Research priorities for the development and
536 implementation of serological tools for malaria surveillance. F1000Prime Rep. 2014;6:100.
- 537 31. Lim KJ, Park JW, Yeom JS, Lee YH, Yoo SB, Oh JH, et al. Humoral responses against the C-terminal region of merozoite
538 surface protein 1 can be remembered for more than 30 years in persons exposed to Plasmodium vivax. Parasitol Res.
539 2004;92(5):384-9.
- 540 32. Good KL, Avery DT, Tangye SG. Resting human memory B cells are intrinsically programmed for enhanced survival and
541 responsiveness to diverse stimuli compared to naive B cells. J Immunol. 2009;182(2):890-901.
- 542 33. Chuquiyauri R, Molina DM, Moss EL, Wang R, Gardner MJ, Brouwer KC, et al. Genome-Scale Protein Microarray
543 Comparison of Human Antibody Responses in Plasmodium vivax Relapse and Reinfection. Am J Trop Med Hyg.
544 2015;93(4):801-9.
- 545 34. Stewart L, Gosling R, Griffin J, Gesase S, Campo J, Hashim R, et al. Rapid assessment of malaria transmission using age-
546 specific sero-conversion rates. PLoS One. 2009;4(6):e6083.
- 547 35. Rosas-Aguirre Angel, Guzman-Guzman Mitchel, Chuquiyauri Raul, Moreno Marta, Manrique Paulo, Ramirez Roberson,
548 et al. Environmental Context Drives Transmission Dynamics of Co-Endemic Plasmodium vivax and Plasmodium falciparum
549 in Two Contrasting Epidemiological Settings in the Peruvian Amazon: Results of a Three-Year, Population-Based, Densely-
550 Sampled Longitudinal Cohort Study SSRN. 2020.
- 551 36. Galinski MR, Medina CC, Ingravallo P, Barnwell JW. A reticulocyte-binding protein complex of Plasmodium vivax
552 merozoites. Cell. 1992;69(7):1213-26.
- 553 37. Franca CT, He WQ, Gruszczyk J, Lim NT, Lin E, Kiniboro B, et al. Plasmodium vivax Reticulocyte Binding Proteins Are
554 Key Targets of Naturally Acquired Immunity in Young Papua New Guinean Children. PLoS Negl Trop Dis.
555 2016;10(9):e0005014.
- 556 38. Tran TM, Oliveira-Ferreira J, Moreno A, Santos F, Yazdani SS, Chitnis CE, et al. Comparison of IgG reactivities to
557 Plasmodium vivax merozoite invasion antigens in a Brazilian Amazon population. Am J Trop Med Hyg. 2005;73(2):244-55.
- 558 39. Dreyer AM, Matile H, Papastogiannidis P, Kamber J, Favuzza P, Voss TS, et al. Passive immunoprotection of Plasmodium
559 falciparum-infected mice designates the CyRPA as candidate malaria vaccine antigen. J Immunol. 2012;188(12):6225-37.
- 560 40. Volz JC, Yap A, Sisquella X, Thompson JK, Lim NT, Whitehead LW, et al. Essential Role of the PfRh5/PfRipr/CyRPA
561 Complex during Plasmodium falciparum Invasion of Erythrocytes. Cell Host Microbe. 2016;20(1):60-71.
- 562 41. Morais CG, Soares IS, Carvalho LH, Fontes CJ, Krettli AU, Braga EM. IgG isotype to C-terminal 19 kDa of Plasmodium
563 vivax merozoite surface protein 1 among subjects with different levels of exposure to malaria in Brazil. Parasitol Res.
564 2005;95(6):420-6.

- 565 42. Rosas-Aguirre A, Speybroeck N, Llanos-Cuentas A, Rosanas-Urgell A, Carrasco-Escobar G, Rodriguez H, et al. Hotspots
566 of Malaria Transmission in the Peruvian Amazon: Rapid Assessment through a Parasitological and Serological Survey. *PLoS*
567 *One*. 2015;10(9):e0137458.
- 568 43. Longley RJ, White MT, Takashima E, Morita M, Kanoi BN, Li Wai Suen CSN, et al. Naturally acquired antibody responses
569 to more than 300 *Plasmodium vivax* proteins in three geographic regions. *PLoS Negl Trop Dis*. 2017;11(9):e0005888.
- 570 44. Tongren JE, Drakeley CJ, McDonald SL, Reyburn HG, Manjurano A, Nkya WM, et al. Target antigen, age, and duration
571 of antigen exposure independently regulate immunoglobulin G subclass switching in malaria. *Infect Immun*.
572 2006;74(1):257-64.
- 573 45. Fernandez-Becerra C, Sanz S, Brucet M, Stanistic DI, Alves FP, Camargo EP, et al. Naturally-acquired humoral immune
574 responses against the N- and C-termini of the *Plasmodium vivax* MSP1 protein in endemic regions of Brazil and Papua New
575 Guinea using a multiplex assay. *Malar J*. 2010;9:29.
- 576 46. He WQ, Shakri AR, Bhardwaj R, Franca CT, Stanistic DI, Healer J, et al. Antibody responses to *Plasmodium vivax* Duffy
577 binding and Erythrocyte binding proteins predict risk of infection and are associated with protection from clinical Malaria.
578 *PLoS Negl Trop Dis*. 2019;13(2):e0006987.
- 579 47. Morais CG, Soares IS, Carvalho LH, Fontes CJ, Krettli AU, Braga EM. Antibodies to *Plasmodium vivax* apical membrane
580 antigen 1: persistence and correlation with malaria transmission intensity. *Am J Trop Med Hyg*. 2006;75(4):582-7.
- 581 48. Yman V, White MT, Rono J, Arca B, Osier FH, Troye-Blomberg M, et al. Antibody acquisition models: A new tool for
582 serological surveillance of malaria transmission intensity. *Sci Rep*. 2016;6:19472.

583