

# Assessing the nationwide impact of COVID-19 mitigation policies on the transmission rate of SARS-CoV-2 in Brazil

Daniel C. P. Jorge<sup>a,j</sup>, Moreno S. Rodrigues<sup>b,j</sup>, Mateus S. Silva<sup>a,j</sup>, Luciana L. Cardim<sup>c</sup>, Nívea B. da Silva<sup>c,d</sup>, Ismael H. Silveira<sup>e</sup>, Vivian A. F. Silva<sup>c</sup>, Felipe A. C. Pereira<sup>f</sup>, Arthur R. de Azevedo<sup>d</sup>, Alan A. S. Amad<sup>g</sup>, Suani T. R. Pinho<sup>a</sup>, Roberto F. S. Andrade<sup>a,c</sup>, Pablo I. P. Ramos<sup>c</sup>, Juliane F. Oliveira<sup>c,h,i</sup>

<sup>a</sup>*Instituto de Física, Universidade Federal da Bahia, Salvador, Bahia, Brazil*

<sup>b</sup>*Fundação Oswaldo Cruz, Porto Velho, Rondônia, Brazil*

<sup>c</sup>*Center for Data and Knowledge Integration for Health (CIDACS), Instituto Gonçalo Moniz, Fundação Oswaldo Cruz, Bahia, Brazil*

<sup>d</sup>*Instituto de Matemática e Estatística, Universidade Federal da Bahia, Salvador, Bahia, Brazil*

<sup>e</sup>*Instituto de Saúde Coletiva, Universidade Federal da Bahia, Salvador, Bahia, Brazil*

<sup>f</sup>*Instituto de Física, Universidade de São Paulo, São Paulo, Brazil*

<sup>g</sup>*College of Engineering, Swansea University, Swansea, Wales, United Kingdom*

<sup>h</sup>*Centre of Mathematics of the University of Porto (CMUP), Department of Mathematics, Porto, Portugal*

<sup>i</sup>*Correspondence: Juliane F. Oliveira ([julianlanzin@gmail.com](mailto:julianlanzin@gmail.com)).*

<sup>j</sup>*These authors contributed equally to this work and are listed in alphabetical order.*

---

## Abstract

COVID-19 is now identified in almost all countries in the world, with poorer regions being particularly more disadvantaged to efficiently mitigate the impacts of the pandemic. In the absence of efficient therapeutics or vaccines, control strategies are currently based on non-pharmaceutical interventions, comprising changes in population behavior and governmental interventions, among which the prohibition of mass gatherings, closure of non-essential establishments, quarantine and movement restrictions. In this work we analyzed the effects of 707 published governmental interventions, and population adherence thereof, on the dynamics of COVID-19 cases across all 27 Brazilian states, with emphasis on state capitals and remaining inland cities. A generalized SEIR (Susceptible, Exposed, Infected and Removed) model with a

*Preprint submitted to Elsevier*

*March 16, 2021*

time-varying transmission rate (TR), that considers transmission by asymptomatic individuals, is presented. We analyze the effect of both the extent of enforced measures across Brazilian states and population movement on the changes in the TR and effective reproduction number. The social mobility reduction index, a measure of population movement, together with the stringency index, adapted to incorporate the degree of restrictions imposed by governmental regulations, were used in conjunction to quantify and compare the effects of varying degrees of policy strictness across Brazilian states. Our results show that population adherence to social distance recommendations plays an important role for the effectiveness of interventions and represents a major challenge to the control of COVID-19 in low- and middle-income countries.

*Keywords:* Brazil; COVID-19; mathematical modeling; non-pharmaceutical interventions; public policies; transmission rate.

---

## 1. Introduction

COVID-19, a disease caused by the SARS-CoV-2 coronavirus, emerged in December 2019 in China and was recognized as a pandemic by the World Health Organization on March 11, 2020 [1]. At that moment, Brazil had already confirmed 53 cases. On March 20, with 972 confirmed cases, the Brazilian Ministry of Health recognized community transmission of COVID-19 throughout the national territory, 24 days after the first confirmed case of COVID-19 was identified [2]. Brazil is a country with 209.5 million individuals and stark socioeconomic disparities throughout its territory. It is the largest country in South America and the fifth largest nation in the world. Accordingly, the many challenges imposed by the COVID-19 pandemic are unprecedented in this country.

The political-administrative organization of Brazil comprises three spheres of governance: The Union (federal government), the 27 states (including the Federal District, where the capital city, Brasilia, is located) and 5,570 municipalities. To reduce the transmission of SARS-CoV-2, federal, state and city governments implemented a series of interventions by means of government decrees [3]. This included recommendations to identify and isolate confirmed cases and contacts; to restrict unnecessary movements; to practice social distancing; to increase hygiene awareness; to follow respiratory etiquette; to

21 wear masks in public, among others. In the absence of more intensive miti-  
22 gation policies implemented by the federal government (such as lock-downs  
23 and movement restrictions), most measures were adopted by local govern-  
24 ments (state/municipalities) [3]. However, adherence to these policies varied  
25 greatly throughout the country, and while some regions enacted more strict  
26 controls, others have been more lax.

27 The COVID-19 crisis has called attention to the importance of mathemat-  
28 ical modeling to inform governmental policies and in quantifying the effects  
29 of the pandemic at multiple levels [4]. Models have been adapted to ad-  
30 dress questions such as the role of asymptomatic individuals to SARS-CoV-2  
31 transmission chains [5], to assess the effectiveness of testing and quarantine  
32 strategies in informing economic reopening [6] and epidemic suppression by  
33 partial lockdown strategies [7], to quantify the needs for hospital beds under  
34 various social distancing scenarios [8, 9, 10], among others, eg. [11, 12, 13, 14].  
35 By drawing on a generalized SEIR model that simulates the dynamics of vi-  
36 ral spread in a population entirely susceptible to the new virus, it is possible  
37 to define and estimate the transmission rate (TR) at which an infected in-  
38 dividual will transmit the disease to a susceptible person [15]. Therefore,  
39 the higher this rate, the greater the number of new cases in a region over  
40 time. Downward changes on the TR are expected with the implementation  
41 of mitigation policies such as non-pharmaceutical interventions (NPI), the  
42 only option to limit the spread of SARS-CoV-2 in the absence of effective  
43 therapies or vaccination with sufficient population coverage.

44 In this work, we comparatively analyze the evolution of the COVID-19  
45 transmission rate and effective reproduction number across all 27 Brazilian  
46 states, with emphasis on state capitals and remaining inland cities, estab-  
47 lishing links with measures of governmental restrictions (NPIs) implemented  
48 in each region together with the human behavior response, particularly the  
49 adherence to recommendations of social distancing. The varying degree of en-  
50 forced policies across the country offers an opportunity to study the impacts  
51 of interventions, including their breadth and timing, on the TR of SARS-  
52 CoV-2 throughout Brazilian states. These findings can be extrapolated to  
53 similar settings in other low- and middle-income countries to drive improve-  
54 ments in mitigation policies against subsequent waves of SARS-CoV-2 and  
55 other potentially pandemic pathogens.

## 56 2. Methodology

### 57 *Data sources*

58 The number of confirmed cases of COVID-19 for each Brazilian munic-  
59 ipality, up to May 22, 2020, was obtained from the Ministry of Health of  
60 Brazil and are publicly available [16, 17]. Since the capitals of each state have  
61 different dynamics and largely concentrated COVID-19 cases in the initial  
62 wave of the epidemic (an assumption informed by previous works [18, 19]),  
63 we analyzed the transmission dynamics for each state in the following way:  
64 1) The entire state, 2) the state capital alone; and 3) the remaining state  
65 municipalities grouped as a single place by summing up their reported cases.  
66 Throughout the text we refer to the latter as inland cities, although strictly  
67 not all of these are distant from the shore.

68 To evaluate state-wide enforced governmental measures, we collated gov-  
69 ernment decrees and resolutions scattered throughout various state govern-  
70 ment gazettes and other official repositories up to May 22, 2020, since each  
71 state uses different platforms to communicate their legislation. We anno-  
72 tated the type of measure enforced, the implementation date, the duration  
73 and whether it was valid to the whole state or limited to specific regions (see  
74 Supplementary Material).

75 In addition to state level decrees we also collated COVID-19-related fed-  
76 eral regulations, which affect equally all states [20]. However, federal-level  
77 regulations did not interfere on measures enforced by state or municipalities,  
78 and most of them were later repealed. Indeed, on April 8, 2020 the Brazilian  
79 Federal Supreme Court ruled in favor of the decentralization of operations  
80 aimed at controlling COVID-19 in the country, empowering the actions of  
81 state and municipal governments [21]. The evaluation of municipal-level reg-  
82 ulations was not performed due to the large number of Brazilian cities, a total  
83 of 5,570, each having their own system for publications of legislation, with  
84 variable degrees of update frequency and usually providing unstructured data  
85 and burdensome access options, which would make their manual processing  
86 unpractical. For this reason, in this work we only considered regulations  
87 issued by the 27 state governments, which totaled 707 decrees.

88 As a proxy of the population adherence to recommendations of social  
89 distancing, we used information from InLoco [22], a Brazilian technology  
90 start-up that developed an index of social mobility, which seeks to help in  
91 fight the pandemic in Brazil. Data for the index construction is obtained  
92 from the unidentified, aggregated geo-movement patterns extracted from 60

93 million mobile devices throughout the country. The index ranges from 0 to  
94 100% and measures the proportion of devices from a given municipality that  
95 remained within a 450 meter radius from the location identified as home by  
96 the device. The higher the index, the greatest the population adherence to  
97 social distancing recommendations. The data is available at [22]. Examples  
98 of other works that used the Social mobility reduction index (SMRI) can be  
99 found in [23, 24].

### 100 *Stringency Index*

101 To comparatively evaluate the governmental measures implemented by  
102 the Brazilian states, we constructed a stringency index, denoted by  $\iota$ , simi-  
103 larly to that implemented in [25]. To score each employed policy we adapted  
104 the methodology to the Brazilian context by taking into account the specific  
105 measures established by the different state governments and described in the  
106 Data Sources section.

107 Measures were classified into two categories: Ordinal and cumulative.  
108 Ordinal class of measures, denoted by  $O$ , are those in which there is a clear  
109 order on the intensity of the restriction, so that there are less possibilities  
110 of reclassification. For instance, a decree prohibiting agglomerations of more  
111 than 100 people, followed by a second decree restricting to 500 people, belong  
112 to the ordinal category, where the first is more intense than the second.  
113 Cumulative class of measures, denoted by  $C$ , are those with no clear order of  
114 intensity, allowing for a wide range of possibilities to classify the restriction.  
115 For instance, closure of malls and prohibition to accessing parks and beaches  
116 have no clear order to which of these measures is more intense and may lead  
117 to subjective classification.

118 Every class of measures is a collection of sub-measures depending on how  
119 each government decided to response and enforce measures. In this work  
120 we have seven classes of measures, of which four are ordered and three are  
121 cumulative, further described in Supplementary Table 1. Cancellation of  
122 public events ( $O_1$ ) presents six sub-measures. Similarly, health etiquette  
123 policies ( $C_1$ ) has two sub-measures.

124 The evaluation of the ordered class of measures varies from 0 (when no  
125 measure is applied) to  $j$  (when the most stringent sub-measure is applied),  
126 where the index  $j$  varies from 0 to  $N_{O_i}$ , the number of sub-measures of the  
127 ordinal class of measures  $O_i$  (we similarly denote  $N_{C_i}$ , as the number of sub-  
128 measures for the cumulative class). For the cumulative class of measures,  
129 we evaluate each sub-measure as 0 if the sub-measure was not applied or

130 1 otherwise, so that the value of the class will be the sum of points of the  
 131 sub-measures  $s_{C_i}$ . Additionally, to take into account whether the measure  
 132 was enforced for the whole state or limited to a particular region, each class  
 133 has a target  $G$ . If the measure is ordinal, then we consider  $G = G_{O_i}$ , taking  
 134 either the value 0, if the most stringent sub-measure is applied for specific  
 135 areas of the state, or 1, if it is enforced for the whole state. If the measure  
 136 is cumulative, and since it will be a sum of the sub-measures, then  $G = G_{C_i}$   
 137 is the sum of targets for each sub-measure  $s_{G_{C_i}}$ , which again is either 0 if  
 138 the sub-measure is applied to specific areas or 1 if it is applied to the whole  
 139 state without exceptions. A summary of the seven measures, as well as their  
 140 number of sub-measures and targets are presented in Table 1.

Table 1: Classification of governmental responses to COVID-19 in Brazil (state-wide).

Measure adopted	Type	Class of measures	Targeting index	Number of sub-classes N
Cancellation of public events	ordinal	$O_1$	$G_{O_1}$	6
Closure of schools/universities	ordinal	$O_2$	$G_{O_2}$	2
Home-office for governmental employees	ordinal	$O_3$	$G_{O_3}$	4
Isolation	ordinal	$O_4$	$G_{O_4}$	2
Closure of non-essential businesses and public activities	cumulative	$C_1$	$G_{C_1}$	7
Transport lock	cumulative	$C_2$	$G_{C_2}$	6
Health etiquette policies	cumulative	$C_3$	$G_{C_3}$	2

141 The index for the ordinal classes is given by

$$\iota_{O_i} = \frac{j}{N_{O_i}(2 - G_{O_i})}.$$

142 Thus, the value of the stringency  $\iota_{O_i}$  is the value of the most stringent mea-  
 143 sured applied,  $j$ , normalized by the number of sub-classes,  $N_{O_i}$ , multiplied  
 144 by the term  $(2 - G_{O_i})$ , which is 1 when the target is for the whole state or 2  
 145 otherwise (that is, the stringency  $\iota_{O_i}$  is divided by two).

146 For the cumulative classes the index is defined by

$$\iota_{C_i} = \frac{s_{G_{C_i}} + \frac{(s_{C_i} - s_{G_{C_i}})}{2}}{N_{C_i}},$$

147 where the sum  $s_{G_{C_i}}$  reflects the measures that were applied to the whole state,  
 148 and the term  $(s_{C_i} - s_{G_{C_i}})/2$  evaluates the measures that were not applied for  
 149 the whole state. Lastly, the whole expression is normalized by the number  
 150 of sub-classes  $N_{C_i}$ .

151 Therefore, the total state index  $\iota$ , for a given day, will be taken as the  
152 average of the value of the classes  $\iota_{O_i}$  and  $\iota_{C_i}$ , yielding

$$\iota = 100 \times \frac{\sum_{i=1}^4 \iota_{O_i} + \sum_{i=1}^3 \iota_{C_i}}{7}.$$

153 Examples of these estimates are given in Supplementary Note 1.

#### 154 *The mathematical model*

155 We generalize the usual SEIR model by separating the infectious compart-  
156 ment into two: Asymptomatic/non-detected and symptomatic cases, denoted  
157 by  $I_a$  and  $I_s$ , respectively, following our previous modeling strategy [8]. It  
158 is reasonable to consider that the compartment  $I_a$  encompasses many of the  
159 sub-notified cases since the majority of asymptomatic and mild cases are  
160 not accounted for in the official data, in spite of their important role to the  
161 SARS-CoV-2 transmission chain [5]. The system of differential equations  
162 reads:

$$\frac{dS}{dt} = \frac{-\beta(t)SI_s - \beta(t)\delta SI_a}{N} \quad (1)$$

$$\frac{dE}{dt} = \frac{-\beta(t)SI_s - \beta(t)\delta SI_a}{N} - \kappa E \quad (2)$$

$$\frac{dI_a}{dt} = (1 - p)\kappa E - \gamma_a I_a \quad (3)$$

$$\frac{dI_s}{dt} = p\kappa E - \gamma_s I_s \quad (4)$$

$$\frac{dR}{dt} = \gamma_a I_a + \gamma_s I_s \quad (5)$$

163 The epidemiological parameters presented in Equations (1 - 5) are described  
164 in Table 2, along with their estimates (or search ranges, when fitted), which  
165 were informed by previous works.

166 As described in [8], the parameter  $\delta$ , a factor associated with the infec-  
167 tivity of asymptomatic/non-detected infections, plays an important role on  
168 the viral transmission dynamics. As described by equation 1, it influences  
169 the non-linear term, and thus cannot be neglected from the system, unless it  
170 is assumed that the infectivity of asymptomatic individuals is equivalent to  
171 that of symptomatic cases, ie.  $\delta = 1$ . However, several studies suggest  $\delta < 1$   
172 [5, 29, 32], which guided our modeling choice that defined the search interval  
173 for this parameter (Table 2).

Table 2: Key epidemiological parameters used in the SEIR model, with their respective value (when fixed) or the search intervals used for parameter estimations, informed by the literature.

Parameter	Description	Search interval	Fixed	Reference
$\beta$	Transmission rate	[0,2]	-	[5, 26, 27, 28]
$t_i$	Time of when transmission rate change	Defined in the Result section	-	[27, 28]
$\delta$	Asymptomatic infectivity	[0,0.7]	-	[5, 29, 30, 9, 31, 32]
$p$	Proportion of latent (E) that proceed to $I_s$	-	0.2	[5, 31, 33]
$\kappa$	Mean exposed period, or incubation time	-	1/4	[5, 30, 34, 35, 36]
$\gamma_a$	Mean asymptomatic period	-	1/3.5	[5]
$\gamma_s$	Mean symptomatic period	-	1/4	[5, 26, 37]

174 Additionally, to account for variations in the TR over time, we assume  
 175 that the TR  $\beta$  is a function given by:

$$\beta(t) = \beta_0 \mathcal{H}(t_1 - t) + \sum_{i=1}^{n-1} \beta_i \mathcal{H}(t_{i+1} - t) \mathcal{H}(t - t_i) + \beta_n \mathcal{H}(t - t_n), \quad (6)$$

176 where  $\{t_1, t_2, \dots, t_n\}$  represent a set of points in time defining the change on  
 177 the TR,  $\beta_i$  are TRs in the interval  $[t_i, t_{i+1}]$ , and  $\mathcal{H}(x) = 1$  if  $x > 0$ ,  $\mathcal{H}(x) = 0$   
 178 if  $x < 0$  and  $\mathcal{H}(x) = 1/2$  if  $x = 0$ .

179 The key novelty here is that the influence of governmental measures on  
 180 social mobility and human behavior can dictate changes on the TR ( $\beta_i$ 's) on  
 181 inferred points  $t_i$ 's. To do so, we assume that the  $t_i$ 's change in an inter-  
 182 val search based on variations in stringency and social mobility, described  
 183 previously. Additionally, to evaluate if one or more changes to the transmis-  
 184 sion rate was required, we assessed the value obtained using the Bayesian  
 185 information criterion (BIC) as well as by visual evaluation of the fitted re-  
 186 sults. The visual evaluation is important since the calculation of the BIC  
 187 may yield small variations when the number of parameters is increased due  
 188 to the inherent noise in the data.

189 The time of changing transmission rate and the rate itself, as well as the  
 190  $\delta$  parameter are estimated using the Particle Swarm Optimization (PSO)  
 191 metaheuristic. Under the PSO framework, we used maximum likelihood es-  
 192 timation to optimize the model to the series of daily confirmed cases for  
 193 each state, capital cities and remaining inland cities up to May 22, 2020.  
 194 PSO was implemented using `pyswarms` library version 1.1.0 for Python 3  
 195 (<http://python.org>) [38], and was executed with 150 particles through 500  
 196 iterations with cognitive parameter 0.1, social parameter 0.3, inertia pa-  
 197 rameter 0.9, evaluating five closest neighbors through Euclidean (or L2)



198 distance metric. In addition to the point estimates obtained by the PSO  
199 method, percentile confidence intervals were also estimated for these param-  
200 eters. The intervals were constructed using the weighted non-parametric  
201 bootstrap method, considering 100 replicates of the original series of new  
202 cases. Similar work to evaluate the impact of non-pharmaceutical measures  
203 on the TR and dynamic spread of the disease are presented in [27, 28, 39].  
204 The parameters  $p, \kappa, \gamma_a, \gamma_s$  were informed by the literature and kept fixed.  
205 The remaining estimated model parameters and search intervals were in-  
206 formed both by the literature and the analyses presented in this work, and  
207 are presented in Table 2.

### 208 *Basic and effective reproduction number*

209 Based on the obtained parameter values we also evaluated the basic repro-  
210 ductive number  $\mathcal{R}_0$  and the effective reproductive number  $\mathcal{R}(t)$ , also denoted  
211 by  $\mathcal{R}_t$ , as described in [8]. The basic reproductive number  $\mathcal{R}_0$  characterizes  
212 the disease spread during the very early time interval after it has been in-  
213 troduced, thus it is evaluated on the first transmission rate estimated by the  
214 model. Its expression is given by (see [8, 40, 41]):

$$\mathcal{R}_0 = \frac{\beta_0 p}{\gamma_s} + \frac{\beta_0 \delta(1-p)}{\gamma_a}. \quad (7)$$

215 We also obtain the time series of the effective reproductive number  $\mathcal{R}(t)$ ,  
216 which indicate the current trend of the epidemic. Details of this calculation  
217 can be found in Supplementary Note 5 of our previous work [8]. By writing  
218 the infection-age structured epidemic model of our system of equations (1)  
219 to (5) [40, 42], we obtain:

$$\mathcal{R}(t) = \frac{S(t)}{S(0)} \frac{\delta(1-p)\beta(t)}{\gamma_a} + \frac{S(t)}{S(0)} \frac{p\beta(t)}{\gamma_s}. \quad (8)$$

220 Equation (8) would be similar to the general form given by  $\mathcal{R}(t) = \mathcal{R}_0 S(t)$   
221 only for a portion of the evaluated period, since we consider changes on time  
222 in the transmission rate  $\beta$  and the  $\mathcal{R}_0$  expression only takes into account the  
223 transmission rate before the first change, that is, for  $t < t_1$ .

224 Additionally, equation (8) can be also given by:

$$\mathcal{R}(t) = \frac{b(t)}{\int_0^\infty b(t-x)g(x)dx}, \quad (9)$$

225 where the numerator  $b$  represents daily number of new cases and the de-  
226 nominator corresponds to the convolution on  $b$  and  $g$ , that is the disease  
227 probability distribution function for the time interval between the infection  
228 of an individual and its secondary cases. The function  $g$  is derived from the  
229 differential equations of the model and receives contributions from the three  
230 compartments  $E$ ,  $I_a$ ,  $I_s$  that impact the evaluation of  $\mathcal{R}_0$  and  $\mathcal{R}(t)$ , as pre-  
231 sented in [8]. The advantage of equation (9) is that it allow us to evaluate  
232 the effective reproduction number directly on the available data and  $g$ , a  
233 probability distribution function that can take different shapes and makes  
234 our result more flexible to compare directly with the data, being  $\delta$  the only  
235 estimated necessary parameter used to feed equation (9).

236 Finally, since the data are reported as daily case counts, to calculate  
237 expression (9), we discretize the generation time distribution  $g$ , such that  
238  $\sum_{t_i} g(t_i) = 1$ , see [42]. Thus,

$$\mathcal{R}(t) = \frac{b(t_i)}{\sum_i b(t_{i-j})g(t_i)}. \quad (10)$$

### 239 *Visualization app*

240 To facilitate visualizing the results of the analysis performed in this  
241 work, a web-based application was developed using R/Shiny (<http://shiny.rstudio.com>). The application can be found at [https://modelingtaskforce.shinyapps.io/transmission\\_rate\\_app/](https://modelingtaskforce.shinyapps.io/transmission_rate_app/).

### 244 *Data availability*

245 Codes used to produce the results presented herein and related datasets  
246 are available as supplementary material and in a public GitHub reposi-  
247 tory [43]. Case series data, stringency and SMRI series, model fits and  
248 details of estimates can be found in the on-line web page app at [https://modelingtaskforce.shinyapps.io/transmission\\_rate\\_app/](https://modelingtaskforce.shinyapps.io/transmission_rate_app/).

### 250 *Ethics statement*

251 This study was conducted with publicly available data from the COVID-  
252 19 epidemic, published by the Ministry of Health of Brazil or third parties.  
253 Therefore, no approval by an ethics committee was required, according to  
254 Resolutions 466/2012 and 510/2016 (article 1, sections III and V) from the  
255 National Health Council (CNS), Brazil.

### 256 3. Results

#### 257 *The entry of SARS-CoV-2 in the Brazilian states*

258 Brazil had a total of 334,555 registered COVID-19 cases up to May 22,  
259 2020. The first confirmed case of COVID-19 in Brazil occurred in the state of  
260 São Paulo, southeastern region, on February 26, 2020. Within an interval of  
261 seven to 12 days (from March 4 to March 9) the states<sup>10</sup> of ES, DF, BA, AL,  
262 RJ and MG had confirmed cases of COVID-19. From March 10 to March 25  
263 the disease spread to the remaining 20 Brazilian states (Figure 1A).

264 By the moment that state authorities were unable to relate confirmed  
265 cases through chains of transmission, SARS-CoV-2 community transmission  
266 began to be declared in each region (Figure 1A; Supplementary Table 2).  
267 Supplementary Figure 1 shows the temporal variation from the first reported  
268 case to the declaration of community transmission in the state. As depicted  
269 in Supplementary Figure 1, 40.7% (11/27) of the states took between 0 and  
270 10 days to declare community transmission, 51.9% (14/27) took between 11  
271 and 30 days, while only two states (Tocantins and Roraima), corresponding  
272 to 7.5%, took more than 30 days to declare community transmission. This  
273 scenario is further complicated by the delays in reporting cases. Although  
274 each state declared community transmission at some point, there are uncer-  
275 tainties around these dates due to delays in both the registration of cases and  
276 the communication from the local level (municipality) to state authorities,  
277 as exemplified in the states of Paraná and Roraima [44, 45].

278 In the supplemental web-page (see Data availability section), we present  
279 the incidence of COVID-19 for each state, capitals and inland cities. As  
280 shown, in the early stage of the pandemic in Brazil, the North region was  
281 the most affected, accounting for the highest incidence, followed by CE and  
282 MA in the Northeastern region. Once the entry of the virus was confirmed  
283 within each state, the capitals were the most affected cities initially [19, 18],  
284 emerging as the epicenter of the epidemic in each state (see Supplementary  
285 Figures 2 and 3). Subsequently, SARS-CoV-2 disseminated throughout the

---

<sup>10</sup>Two-letter state abbreviations are as follows: AC, Acre; AL, Alagoas; AP, Amapá; AM, Amazonas; BA, Bahia; CE, Ceará; DF, Distrito Federal; ES, Espírito Santo; GO, Goiás; MA, Maranhão; MT, Mato Grosso; MS, Mato Grosso do Sul; MG, Minas Gerais; PA, Pará; PB, Paraíba; PR, Paraná; PE, Pernambuco; PI, Piauí; RJ, Rio de Janeiro; RN, Rio Grande do Norte; RS, Rio Grande do Sul; RO, Rondônia; RR, Roraima; SC, Santa Catarina; SP, São Paulo; SE, Sergipe; TO, Tocantins.

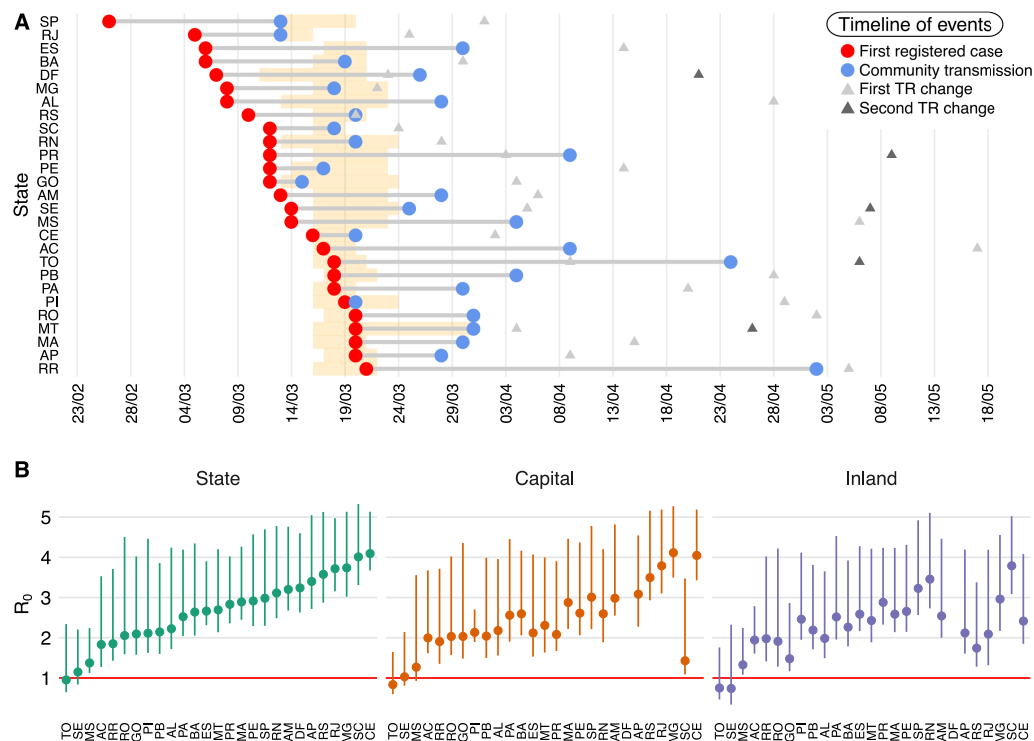


Figure 1: A) A timeline of events associated with the spread of SARS-CoV-2 across the 27 Brazilian states. The dates of first registered cases are shown (red dots), followed by the moment that community transmission was declared in each state (blue dots). The dates when the TR were observed to change ( $\beta_0 \rightarrow \beta_1$  and, when applicable,  $\beta_1 \rightarrow \beta_2$ , are shown as triangles). The orange segments indicate the interval between the initial NPIs enforced by states and the first observed peak in stringency. Dates refer to the year 2020. B) Estimates of  $R_0$  (and corresponding 95% confidence intervals) for each state, their capitals and remaining inland cities. Data for the Federal District (DF), the smallest Brazilian federal unit and the only one that has no municipalities, is only shown at the state-level.

286 inland cities with a different speed, as shown in the top panel plots of Sup-  
 287 plementary Figures 2 and 3, where the incidence of COVID-19 is reported  
 288 for the Brazilian states, capitals and inland cities.

289 *Governmental measures and population adherence*

290 Next, we evaluated the timing of governmental interventions on the num-  
 291 ber of cases, the breadth of these interventions as measured by the stringency  
 292 index, and their effects on influencing people’s behavior, particularly adhe-

293 sion to social distancing recommendations.

294 A total of 707 regulations published by the 27 Brazilian state governments  
295 were annotated according to the methods described to construct the stringency  
296 index. The first measures enforcement of the state governments were  
297 implemented between March 11 and March 24, with exception of MT that  
298 present a larger time window interval, as shown in Figure 1A and Supple-  
299 mentary Table 2. The states of TO, RR, PI, PA, MT, AP, RO, MA, PB and  
300 AC adopted measures even before the first registered case. In contrast, some  
301 regions which were first affected by COVID-19 were among those that de-  
302 layed the implementation of measures to contain viral spread. For instance,  
303 São Paulo adopted measures only 2 weeks after the confirmation of the first  
304 case, on March 13, the same day of community transmission declaration in  
305 the state. A similar scenario occurred in Rio de Janeiro, where the first re-  
306 striction measures were only implemented in parallel to the declaration of  
307 community transmission.

308 Among the measures classified in Table 1, strict quarantine measures  
309 ( $O_4$ ), restrictions on public transportation ( $C_3$ ) and mandatory use of mask  
310 ( $C_3$ ) were the most weakly implemented measures enforced by the states.  
311 Such measures contributed to an average level of 14% in stringency in the  
312 studied period, and were adopted only partially in AP, BA, CE, MA and MT.  
313 Only an average of 16.9% of public transportation measures were applied in  
314 states. In the collected decrees, SP, DF and MS did not enact restrictions on  
315 public transport and PA, PB, PI, RN, GO and ES had a very low average  
316 of 4% in such measures. On the other hand, the mandatory use of masks  
317 contributed, in average, to 33% of the index, with only one state (MS) failing  
318 to enact such measures (Supplementary Table 3).

319 To assess the dynamics of implementation, continuance and lifting of NPIs  
320 by Brazilian states, Figure 2 shows the variation of the stringency index over  
321 time for each region relative to the number of confirmed COVID-19 deaths  
322 per 100,000 inhabitants. All states increased stringency after an incidence of  
323 10 cases per 100k inhabitants. In addition, the states of AP, AM, RR, CE  
324 and PE displayed the highest stringency index in the last period evaluated.  
325 Of note, those states were close to reaching full occupancy of their health  
326 care systems, with more than 75% of ICU occupation [46]. These results  
327 evidenced that heightening the level of measures only when the number of  
328 cases and hospitalizations is already mounting represents a flawed strategy  
329 unable to avert the impacts of a surge of COVID-19 in healthcare demands.

330 Variable adherence to social isolation recommendations was seen across

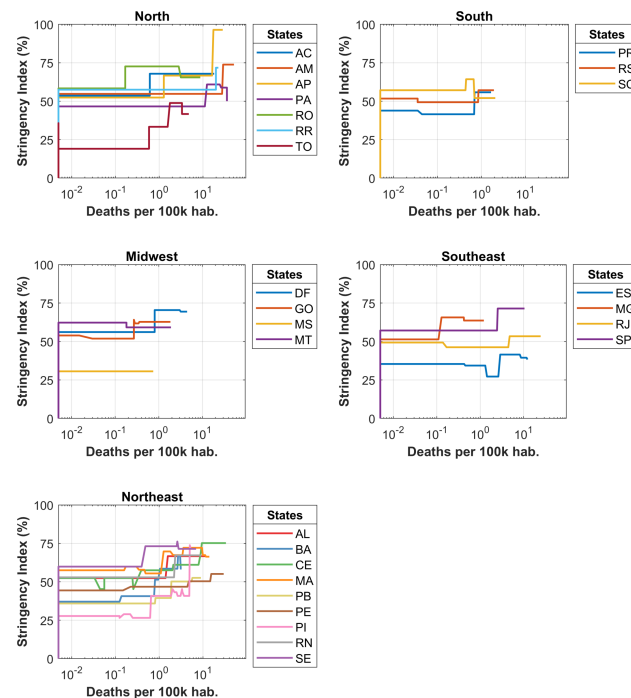


Figure 2: Evolution of the governmental measures adopted for each Brazilian state with respect to COVID-19 death incidence. The figure shows the variation of the stringency index over time for each state relative to the number of confirmed death per 100,000 inhabitants. The number of confirmed deaths per 100,000 population is shown in logarithmic scale on the x-axis.

331 the states, with values of the SMRI close to 30% at the beginning of March,  
332 followed by a peak to around 60% at the end of that month. This was  
333 observed in both state capitals and inland cities. The evolution of the strin-  
334 gency index for each state, as well as the SMRI for capitals and inland cities  
335 is presented in the lower panel plots of Supplementary Figure 2 and 3, as well  
336 as in the supplementary web-page. Used in conjunction, both measures offer  
337 a quantitative evaluation of the degree of policies enforced by Brazilian  
338 state governments, as well as their effectiveness in reducing the circulation  
339 of people, which lead to decreased contacts. Our results showed that, once  
340 the SMRI reached its maximum, it was followed by a decreasing trend even  
341 with the maintenance of measures by state governments.

342 With respect to the breadth and intervention period of governmental  
343 measures, our results led to the identification of three stringency index pat-

344 terns: 1) Increase-and-decrease (ID), where the stringency index increases  
345 initially, but is followed by the lifting of measures leading to its reduction  
346 (such as Santa Catarina in Figure 3a); 2) Increase-and-steady (IS), where  
347 stringency measures reach a peak that remains constant over time (depicted  
348 by São Paulo in Figure 3b); 3) Increase-and-increase (II), where the stringency  
349 index increases successively, probably a mechanism to cope with the  
350 accelerated growth of the epidemic in some regions (illustrated by Amapá in  
351 Figure 3c). Seven states, all located in the North (AC, AP and AM) and  
352 Northeast (BA, CE, PE and PI), followed the II pattern, while seven states,  
353 distributed throughout the Midwest (GO, MT), South (RS, SC), Southeast  
354 (ES) and North (RO, TO) regions conform to the ID pattern (Supplementary  
355 Figure 2 and 3). The remaining 13 states (AL, DF, MA, MG, MS, PA,  
356 PB, PR, RJ, RN, RR, SE and SP), distributed in all regions, followed the IS  
357 pattern. In addition, our results indicated that the reduction of the SMRI  
358 was smaller in states that followed both IS and II patterns (median reduction  
359 of -7.55% and -5.88%, respectively), compared to states that relaxed  
360 their measures according to the ID pattern (median reduction of -9.03%)  
361 (Figure 3d).

362 Of note, even states that promoted relaxation of policies, such as those  
363 that followed an ID pattern, maintained an average SMRI in the last week of  
364 May corresponding to  $40.1 \pm 2.0\%$ , a value higher than that corresponding  
365 to the pre-pandemic SMRI in the first week of February, corresponding to a  
366 value of  $28.7 \pm 1.4\%$ .

### 367 *Varying transmission rates of SARS-CoV-2 in Brazil*

368 Lastly, we sought to comparatively evaluate the effects of governmental  
369 measures and population adherence to social distancing recommendations in  
370 the TR of SARS-CoV-2 throughout Brazilian states.

371 As shown earlier, states reported initial cases of COVID-19 and an-  
372 nounced community transmission at different moments. Then, all regions  
373 reached a peak of measures implemented and corresponding SMRI on March,  
374 2020. By evaluating these metrics in all of the 81 regions analyzed (state,  
375 capitals, inland cities), we defined the search interval for a possible first  
376 change in the transmission rate from March 13, to May 15, to include the  
377 date of the first measure enforced and the last announcement of community  
378 transmission (see Figure 1a). When more than one change in the TR took  
379 place, we defined the search interval to the last month of the studied period,

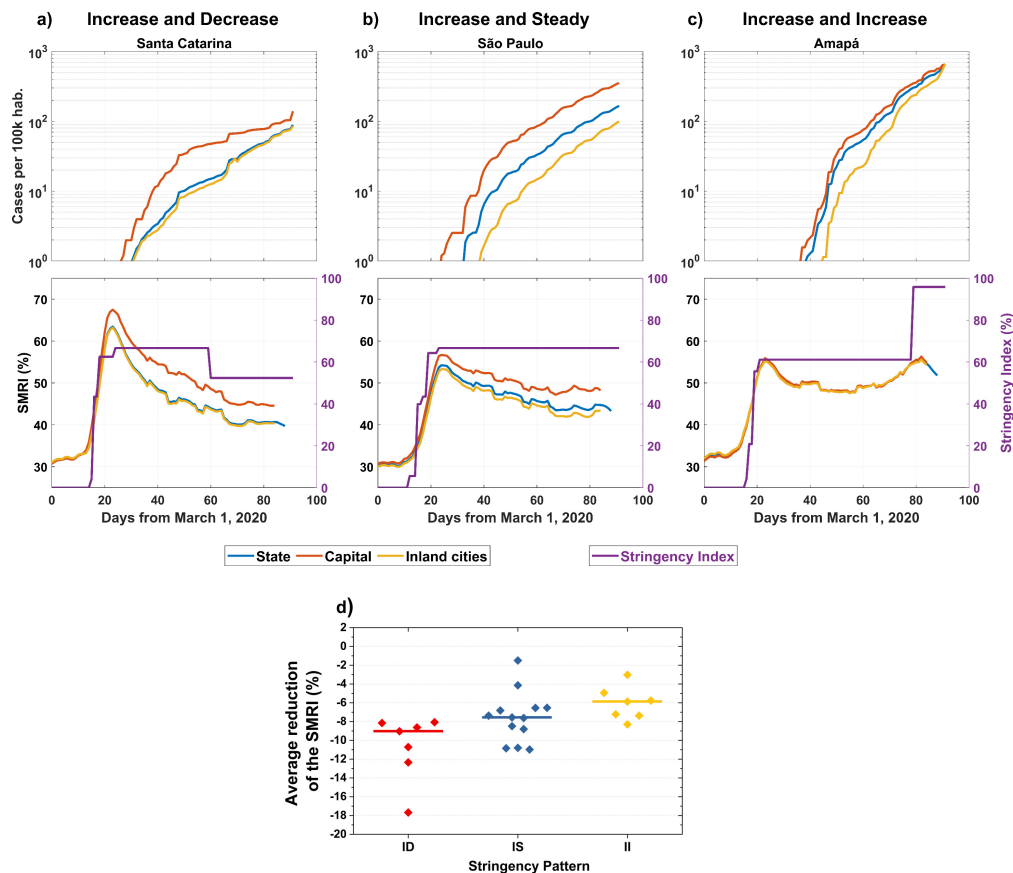


Figure 3: Illustrative examples of a general pattern observed for the behavior of stringency measures over time in Brazil. Upper panels show COVID-19 incidence and bottom panels exhibit the social mobility reduction and the stringency indexes over time for a) Santa Catarina (increase-and-decrease, ID), b) São Paulo (increase-and-steady, IS) and c) Amapá (increase-and-increase, II). The social mobility index is considered separately for capitals, inland cities and the whole state. Plots for the remaining Brazilian states are shown in Supplementary Figure 2 and 3. The average reduction in the SMRI according to the stringency pattern for all states is shown in panel d. For each category, the median is shown as a solid horizontal bar.

380 i.e. from April 22 to May 22, 2020. More than two points of time changes  
 381 were not considered in the time interval of study.

382 In Supplementary Table 4, we detail the number of days elapsed from the  
 383 date of first implemented measure to the estimated date of TR change, and  
 384 the variation from the first to the second ( $\beta_0$ ,  $\beta_1$ ) TR obtained by the SEIR



385 model. Our results show that 26% of the states (BA, RN, DF, MG, RJ, RS  
386 and SC) presented a noticeable change in the TR up to 15 days after the  
387 implementation of the first NPI, 40.7% between 16 and 30 days, 14.8% (PA,  
388 PB, PE, PI) between 31 and 45 days and the remaining 18.5% (AC, RO, RR,  
389 AL and MS) of the states had a TR change only more than 46 days since the  
390 first implemented measure. Estimate TR changes occurred first in capitals,  
391 followed by inland cities (Supplementary Table 4).

392 The dynamic behaviour post intervention can be classified into DDD,  
393 DDI, DID, IDI and III, corresponding to decrease or increase in TR in the  
394 state as a whole, capital and inland, respectively. Around 62% of the states  
395 presented a DDD behavior, that is a decrease on the TR in the state, capital  
396 and inland cities. These states had an average TR decrease higher in the  
397 capitals (-49.67%) compared to the inland cities (-40.43%). The states of  
398 AP, RO, AL and RS (14.8%) displayed a DDI pattern, with an increase in  
399 cases observed for inland cities in May, 2020. On the other hand, the states of  
400 PI and SC showed an increase of the TR in capitals and an observed decrease  
401 in both state-level and inland cities (DID pattern). AC was the only state  
402 with an IDI pattern, while the remaining states (TO, SE and MS) presented  
403 with an III pattern. However, TO and SE later resembled a DDD pattern  
404 with a second change in TR. Furthermore, all states with an increase in TR  
405 in any of its regions (state, capital or inland cities) had either an ID or IS  
406 for the stringency index (as noted in the previous subsection).

407 In Figure 1B we show values for the basic reproduction number for each  
408 region. The lowest values of  $\mathcal{R}_0$  were for the regions that presented an in-  
409 creased TR, as showed before. For instance, TO and SE presented values of  
410  $\mathcal{R}_0 < 1$ . This indicates the lower transmission in the early stage of the dis-  
411 ease spread in these states. The state of MS, that also had and III pattern,  
412 and the inland cities of SC all had the following lowest values of  $\mathcal{R}_0$  (less than  
413 1.5). The inland cities of AC, AL, RO and RS showed values between 1.5 and  
414 2. The remaining states that presented with a DDD pattern for the TR had  
415  $\mathcal{R}_0 > 2$ . Additionally, we can see that states that implemented the measures  
416 before the first reported case usually experienced delayed changes in the TR  
417 (after 8 April) compared to the remaining states and, with exception of AP,  
418 these states were the ones with an average lower value of  $\mathcal{R}_0$  as well.

419 To conclude, changes in the TR also impacted on the effective repro-  
420 duction number causing an average reduction of -56.44% in capitals and of  
421 -46.43% in inland cities, after the first TR change In Figure 4 we show this  
422 impact for each state, their capitals and inland cities. Although a decrease

423 in the average  $\mathcal{R}_t$  after the first TR reduction was observed in most of the  
 424 states, in none of the regions the values of  $\mathcal{R}_t$  fell below one. Moreover, after  
 425 the first TR change, the average level of  $\mathcal{R}_t$  was equal to 1.86 in the inland  
 426 cities compared to 1.53 in capitals.

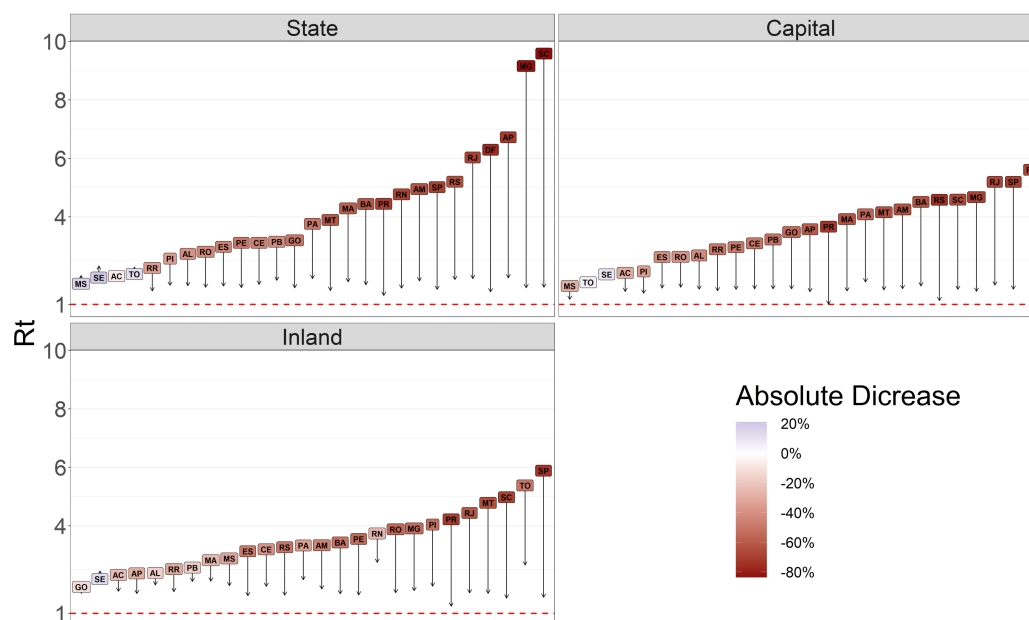


Figure 4: Impact of measures and popular adherence on the effective reproduction number in each Brazilian state. The plot depicts the decrease of the average of  $\mathcal{R}_t$  before and after the first TR change.

427 More details regarding the fitting of the data to the SEIR model produced  
 428 in this work can be found in the supplementary web-page, for both capitals  
 429 and inland cities of each state, as well as the entire state (Supplementary  
 430 Figure 4). We highlight, in each plot, as vertical dashed red lines, the dates  
 431 of transition from  $\beta_0$  to  $\beta_1$  (and  $\beta_1$  to  $\beta_2$ , when applicable) (Supplementary  
 432 Figure 4B). The blue dashed and full lines represent the evolution of the  
 433 epidemic with a fixed transmission rate  $\beta_0$  and with both  $\beta_0$  and  $\beta_1$  (where

434  $\beta_2$  is included when suitable), respectively (Supplementary Figure 4B). The  
435 effective reproductive number is also presented for each state, capitals and  
436 inland cities (Supplementary Figure 4C). The black line represents the  $\mathcal{R}_t$   
437 calculated with reported number of new cases; the blue dashed line repre-  
438 sents the  $\mathcal{R}_t$  calculated with the new number of simulated cases obtained  
439 from the model. The variation of the TR highlights the variations of the  
440 trends of the effective reproductive number. Also shown are the estimates  
441 for stringency for each region and state (Supplementary Figure 4D), the mo-  
442 ments of changes in  $\beta$  (Supplementary Figure 4D) and the goodness-of-fit  
443 (Supplementary Figure 4F), along with tables describing all these results  
444 (Supplementary Figure 4G). Finally, post assessment for all fit performances  
445 are available to evaluate reliability of the forecasts for a 15 day-period beyond  
446 May 22.

#### 447 4. Discussion

448 In this work we evaluated the effects of non-pharmaceutical interventions  
449 and social mobility reduction patterns on the spread dynamics of SARS-  
450 CoV-2 throughout the 27 Brazilian states, by employing an underlying SEIR  
451 model to estimate the transmission rate of SARS-CoV-2. Our results show  
452 that the measures adopted, combined with the population adherence to re-  
453 strict circulation (and therefore decrease contacts), contributed to the low-  
454 ering of the TR in almost all states, an effect that was perceived in both  
455 capitals and inland cities. However, in spite of the continued maintenance of  
456 governmental restrictions in most regions, population adherence to isolation  
457 recommendations gradually decreased over time, even with the expansion of  
458 cases throughout the country. This was reflected in the  $\mathcal{R}(t)$  values, which  
459 we observed to have decreased in all states, but still insufficiently to consider  
460 SARS-CoV-2 transmission controlled in the country, as it remained above 1  
461 for all Brazilian states, capital and inland cities in the studied period. Thus,  
462 public cooperation constitutes a particularly important challenge for tackling  
463 COVID-19 in low- and middle-income countries.

464 The analysis performed on the sub-measures implemented reveal that the  
465 Brazilian states lacked to endure measures restricting transportation (or did  
466 so in a very lax manner), strict lock-downs (as adopted by other countries),  
467 and even the mandatory use of masks at some places, the latter a low cost  
468 measure that plays an important rule to reduce the spread of the disease.  
469 Such restrictive policies have shown to significantly decrease the number of

470 cases, deaths, and viral transmission in other countries [47, 48]. On the  
471 other hand, the economical costs imposed by harsher interventions is even  
472 more burdensome to developing countries, where large economical segments  
473 rely on consumption and services, usually involving physical contact, such as  
474 informal workers, tourism, service and retail businesses.

475 Once the entry of the virus was confirmed within each state, the capitals  
476 were the most affected initially, as shown by others as well [19, 18]. Then,  
477 viral spread continued at different rates, with most of inland cities presenting  
478 an average effective reproduction number higher than the capital after the  
479 first TR change. This is a concerning trend considering the large inequalities  
480 in the access to health services as well as their distribution in Brazil [49,  
481 50], which tend to concentrate near state capitals. We also observed that  
482 downward changes on TRs occurred first in the capitals, followed by the  
483 remaining cities. This effect can also be due to the flux between cities,  
484 which was not accounted in our modeling approach. Accordingly, the TR  
485 observed in capitals should also affect that of inland cities, as suggested by  
486 a meta-population compartmental model [51], but the possibility of further  
487 waves of COVID-19 in these smaller cities, particularly with the lifting of  
488 measures, should not be ruled out. These results highlight the major role of  
489 state capitals as seeding spots, followed by the entry of cases towards smaller,  
490 inland cities. Capitals also tend to centralize international airports, ports,  
491 population density and industries [52, 53, 18, 54].

492 We identified common trends in the stringency index that allowed the  
493 disclosure of three patterns, with the majority of states conforming to an  
494 increase-and-steady pattern, in which the set of governmental policies adopted  
495 remained unaltered over time. States that enforced and maintained mitiga-  
496 tion measures were likely to observe a less pronounced relaxation of stay-at-  
497 home advises by their population, as measured by the SMRI. These results  
498 suggest the intimate relationship between the magnitude of governmental  
499 measures and the population adherence to such measures, particularly since  
500 higher values of stringency implicate in decreased opportunities of public  
501 activities. However, individuals throughout all states, in both capitals and  
502 inland cities, still reduced their adherence to social isolation in the course of  
503 time. The politicization of COVID-19 in Brazil [55] could have had an impact  
504 on people's behavior and compliance with sanitary recommendations, partic-  
505 ularly when individuals downplay the health risks imposed by SARS-CoV-2,  
506 as has been suggested for other countries [56].

507 We also observed that even in states that conformed to an increase-and-

508 decrease stringency index pattern, at least a part of the population still  
509 maintained adherence to isolation. More studies are warranted to evaluate if  
510 this trend associates with specific age-groups, such as the elderly, employment  
511 status, such as individuals that have the possibility to continue working from  
512 home, education level or perception of risks around COVID-19.

513 The present study confirmed the findings about early implementation of  
514 interventions to mitigate the disease spread [28, 39]. In fact, the states that  
515 anticipated applied restriction of the population were the ones with lower  
516 value of  $\mathcal{R}_0$ , representing a more controlled situation if compared to the  
517 other states. Nevertheless, with few exceptions, they were states that had  
518 an ID or IS pattern of mobility, and therefore the efforts were not sufficient  
519 to bring the transmission rate to control levels, as assessed by the  $\mathcal{R}_t$  val-  
520 ues. However, even with late TR change detection in these states, overall  
521 delays must be noticed. In fact, in the scenario of an unfolding epidemic,  
522 the delay in notification systems impacts the perception of the usefulness of  
523 implemented measures. Our results reveal the magnitude of this perception,  
524 where only 26% of the states showed a change on the TR with a maximum  
525 delay of 15 days for the perception of the first peak of enforced policies,  
526 with the remaining states having a significantly larger delay. These results  
527 call attention to this problem and highlight the importance of improving the  
528 surveillance system to better evaluate the impact of implemented measures  
529 and optimise their strictness specially in countries with very low resource  
530 levels [57].

531 Our work has some limitations. First, in order to estimate TRs (and  
532 changes thereof) we relied upon a generalized form of the SEIR model which  
533 explicitly considers asymptomatic/non-detected infections. Thus, albeit the  
534 estimates of model parameters (or their respective search intervals) were in-  
535 formed by the literature for other countries, they could be different from  
536 the reality of the ongoing epidemic in Brazil. However, while the true ex-  
537 tent of SARS-CoV-2 transmission by asymptomatic/non-detected and pre-  
538 symptomatic individuals is still debated, current reports conclude that it is  
539 an important route of transmission [5, 58, 33]. It is important to note that  
540 levels of COVID-19 detection may vary over time due to the differing testing  
541 capacity of each region, a data that to our knowledge is currently unavail-  
542 able for the country. Our reflects this issue by the parameter  $p$ . However, the  
543 availability of data about the number of tests performed over time is a lim-  
544 itation. Also, there are noticeable notification delays that also present with  
545 different magnitudes throughout the regions in Brazil. In fact, Brazil has a

546 total of 5,570 municipalities, this generates heterogeneities on the reporting  
547 date of the case notification. A systematic analysis to infer the reporting de-  
548 lay would require availability of data to at least measure a mean report delay  
549 interval, as others have done [28]. Additionally, this delay may change over  
550 time due to improvement or deterioration in the healthcare system. These are  
551 key points that should be included to overcome this type of bias and correctly  
552 estimate its uncertainties. This limitation may impact on the perception of  
553 the implemented measures as well as compromise the planning of new ones.  
554 However, our work further motivates the importance of an improved notifi-  
555 cation system for Brazil and other countries, which will contribute to better  
556 mitigate the current and future pandemics.

557 We used mobility data from mobile phones as proxies of social isolation  
558 as measured by the SMRI. In particular, the sample space of devices moni-  
559 tored using this technology cannot be considered a representative population  
560 sample, as state/cities with superior economic status will probably exhibit  
561 increased technology adoption by their populations, leading to better accu-  
562 racy of the mobility patterns in these regions. This is in contrast to rural  
563 areas, for instance, where mobile phone usage is limited [59]. However, con-  
564 sidering the general widespread use of mobile phones in the country (with  
565 estimates that 60% of adults report owning a smartphone [60]), the general  
566 trends observed in our work should not be drastically altered by more accu-  
567 rate measurements of social mobility reduction. Lastly, the evaluation of all  
568 measures enforced is not trivial, and in our work we have only included the  
569 use of mask as health etiquette policies, with other NPIs such as sanitary  
570 cleaning of public and private places, the obligatory availability of 70% alco-  
571 hol in stores, as well as economic measures such as emergency payments for  
572 the self-employed, reduction of taxes and others were not evaluated. Still,  
573 proper evaluation of these categories should be assessed.

574 In sum, our results point to the importance of timely deployment of in-  
575 terventions in curbing the first-wave of the COVID-19 epidemic in Brazil.  
576 Yet, population adherence represents a crucial factor for the success of this  
577 effort and represents a major challenge in low- and middle-income countries.

## 578 **Acknowledgements**

579 This study was financed in part by the Coordenação de Aperfeiçoamento  
580 de Pessoal de Nível Superior – Brazil (CAPES) – Finance Code 001. STRP  
581 was supported by an International Cooperation grant (process number

582 INT0002/2016) from Bahia Research Foundation (FAPESB). STRP and  
583 RFSA were supported by the National Institute of Science and Technol-  
584 ogy - Complex Systems from CNPq, Brazil. JFO was supported by the  
585 Center of Data and Knowledge Integration for Health (CIDACS) through  
586 the Zika Platform - a long-term surveillance platform for Zika virus and  
587 microcephaly (Unified Health System (SUS), Brazilian Ministry of Health).  
588 DCJ acknowledges a Scientific Initiation scholarship from CNPq (process  
589 number 117568/2019-8).MSS acknowledges a Scientific Initiation scholar-  
590 ship from CNPq (process number 116731/2019-2). The authors acknowl-  
591 edge the helpful suggestions from members of the CoVida Network (<http://covid19br.org>),  
592 in special to contributors to the Rede CoVida Mod-  
593 elling Task-force: Aureliano S. S. Paiva, Caio P. Castro, Gabriela L. Borges,  
594 Gervásio F. Santos, José G. B. Castro, José G. V. Miranda, Maira L. Souza,  
595 Maria Yury Ichihara, Matheus F. Torquato, Maurício L. Barreto, Raphael  
596 S. do Rosário, Rafael V. Veiga and Rosemeire L. Fiaconne. We acknowledge  
597 the InLoco team, namely José Luciano Melo, Raíza Oliveira, Afonso Del-  
598 gado, Abel Borges, André De'Carli, Hector Pinheiro, Lucas Rufino, Gabriel  
599 Teotonio and Luiza Botelho for providing raw files of the Social mobility  
600 reduction data used here. We also acknowledge the open data initiative of  
601 Brasil.io (<https://brasil.io/datasets/>).

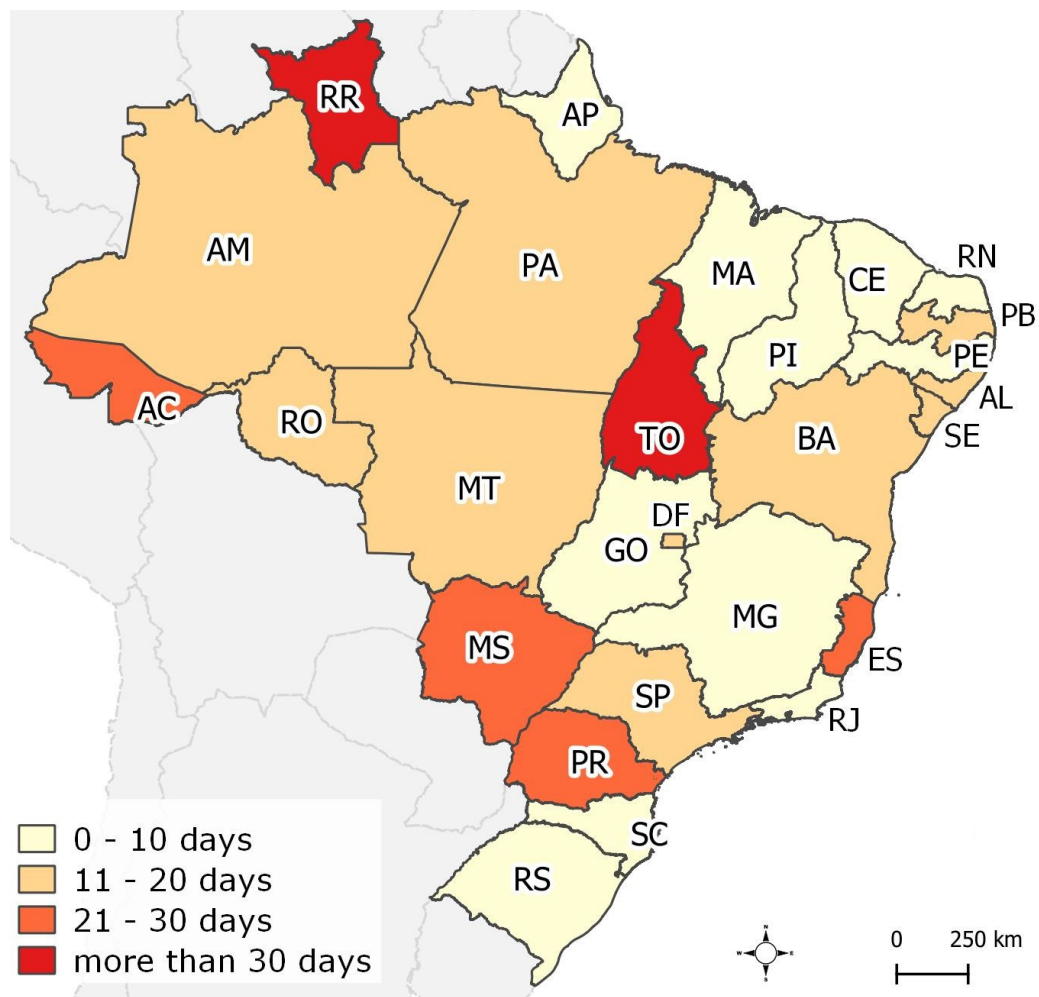
## 602 **Authors' contributions**

603 Conceptualization: LLC, NBS, FACP, PIPR, JFO Data curation: DCPJ,  
604 MSR, MSS, VAFS, FACP, ARA, PIPR, JFO Formal analysis: DCPJ, MSR,  
605 MSS, LLC, NBS, IHS, VAFS, FACP, ARA, ASSA, STRP, RFSA, PIPR,  
606 JFO Investigation: LLC, NBS, FACP, PIPR, JFO Methodology: DCPJ,  
607 MSR, MSS, LLC, NBS, VAFS, FACP, ASSA, STRP, RFSA, PIPR, JFO  
608 Project administration: STRP, RFSA, PIPR, JFO Software: DCPJ, MSR,  
609 MSS, FACP, ARA, ASA, JFO Validation: DCPJ, MSR, MSS, LLC, NBS,  
610 VAFS, FACP, ARA, ASSA, STRP, RFSA, PIPR, JFO Visualization: MSR,  
611 MSS, ARA, PIPR, JFO Writing - original draft: LLC, STRP, PIPR, JFO  
612 Writing - review and editing: DCPJ, MSR, MSS, LLC, NBS, VAFS, FACP,  
613 ARA, ASSA, STRP, RFSA, PIPR, JFO

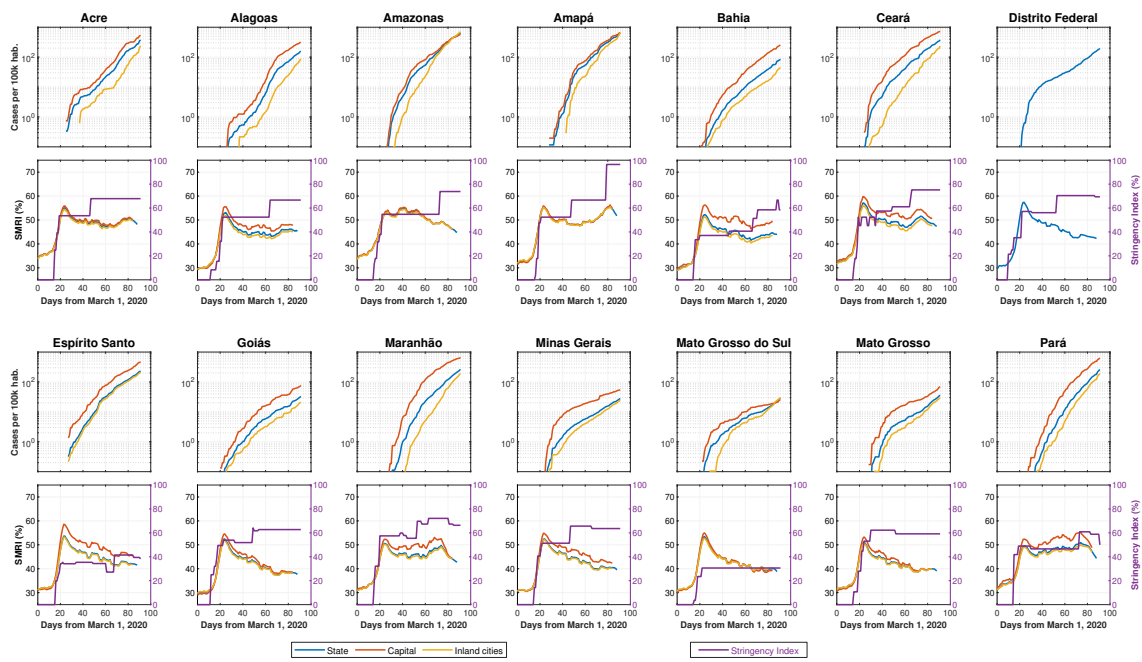
614

## Supplementary Figures



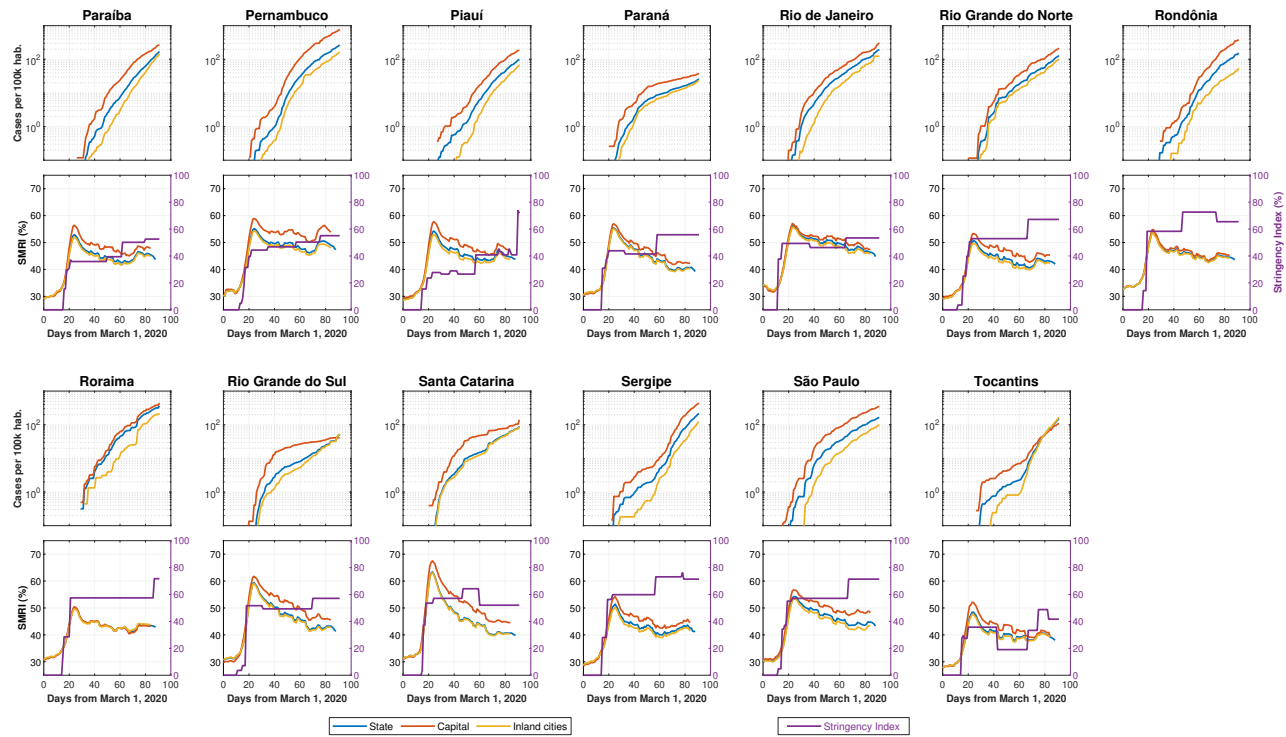


Supplementary Figure 1: Dissemination of COVID-19 in Brazil. (a) Date of first confirmed COVID-19 case per state and (b) number of days elapsed from the first identified case to the establishment of community transmission in the state. Two-letter state abbreviations are as follows: AC, Acre; AL, Alagoas; AP, Amapá; AM, Amazonas; BA, Bahia; CE, Ceará; DF, Distrito Federal; ES, Espírito Santo; GO, Goiás; MA, Maranhão; MT, Mato Grosso; MS, Mato Grosso do Sul; MG, Minas Gerais; PA, Pará; PB, Paraíba; PR, Paraná; PE, Pernambuco; PI, Piauí; RJ, Rio de Janeiro; RN, Rio Grande do Norte; RS, Rio Grande do Sul; RO, Rondônia; RR, Roraima; SC, Santa Catarina; SP, São Paulo; SE, Sergipe; TO, Tocantins.



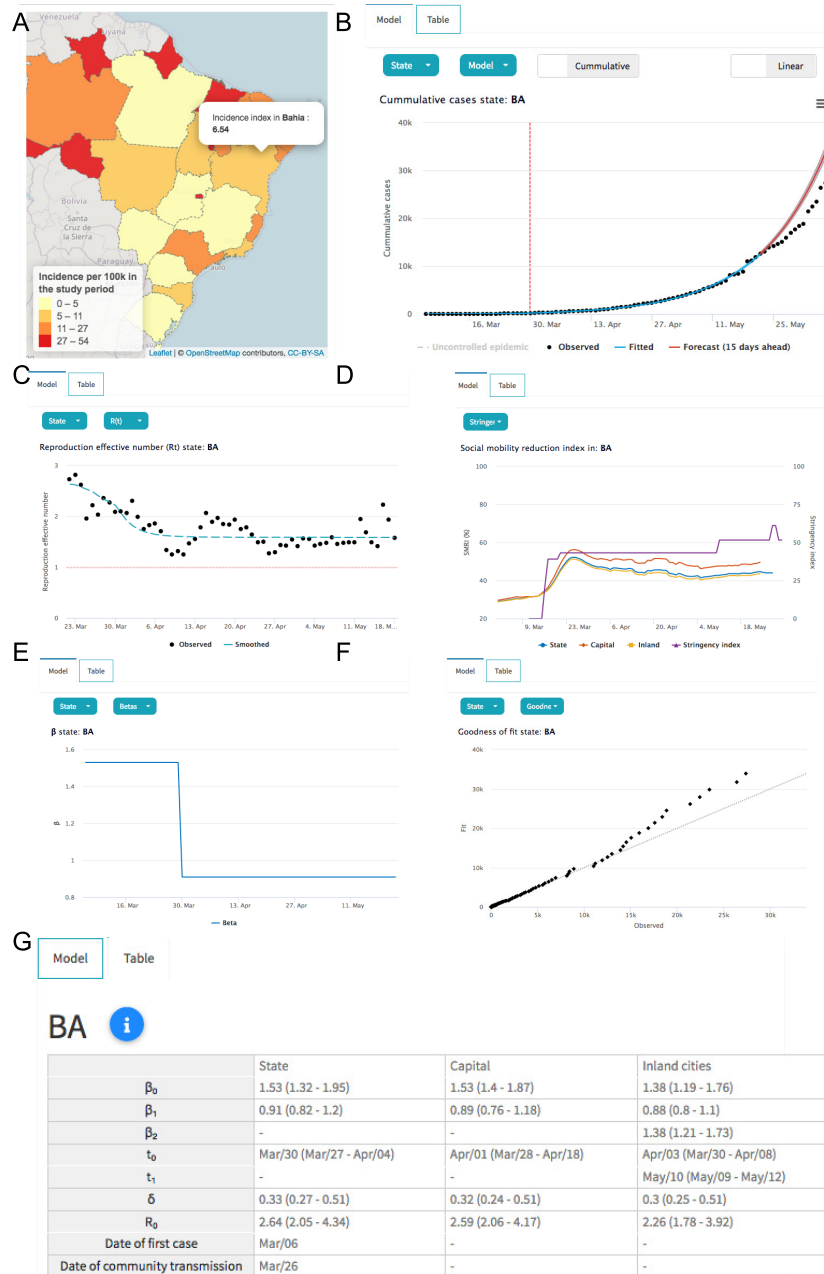
Supplementary Figure 2: COVID-19 incidence per state, their capitals and remaining inland cities (upper plots). The bottom subplots exhibit the Social mobility reduction index, considered separately for capitals, inland cities and the whole state, and the stringency index, for the state measures, over time.





Supplementary Figure 3: COVID-19 incidence per state, their capitals and remaining inland cities (upper plots). The bottom subplots exhibit the Social mobility reduction index, considered separately for capitals, inland cities and the whole state, and the stringency index, for the state measures, over time.





Supplementary Figure 4

## Supplementary Tables

Supplementary Table 1: Classification of the measures implemented in Brazilian states as a response to the COVID-19 spread.

ID	Name	Coding Instructions
$O_1$	Cancel public events	0 - No measures 1 - Ban of public events and public facilities 2 - Restrictions on very large gatherings (above 500 people) 3 - Restrictions on gatherings between 100-499 people 4 - Restrictions on gatherings between 50-99 people 5 - Restrictions on gatherings between 5-49 people 6 - Total ban on crowded events or activities
		0 - Targeted or conditional 1 - General
$O_2$	Closure of schools/universities	0 - No measures 1 - Suggests closure 2 - Require closing
		0 - Targeted or conditional 1 - General
$O_3$	Home-office for government employees	0 - No measures 1 - Home-office for those with symptoms or from some risk groups 2 - Optional home-office 3 - Strategic scheduling work 4 - Mandatory home-office
		0 - Targeted or conditional 1 - General
$O_4$	Isolation	0 - No measures 1 - Vertical isolation 2 - Horizontal isolation
		0 - Targeted or conditional 1 - General
$C_1$	Closure of non-essential businesses and public activities	0 - No measures Closure of malls Suspension of non-essential businesses Suspension of bars and restaurants Ban of activities in public spaces (beaches, parks, etc) Suspension of religious activities Closure of cultural places (theater, cinema, museum) Closure of gyms
		The sum of the measures that was general
$C_2$	Transport lock <small>*Considering only road and river transportation</small>	0 - No measures Suspension on city buses Suspension on inter-cities buses Suspension on inter-state buses Total transportation suspension in the city Total transportation suspension inter cities Total transportation suspension inter states
		The sum of the measures that was general
$C_3$	Health etiquette policies <small>*Corresponding only to mandatory use of masks</small>	0 - No measures Mandatory use in establishments Mandatory use in transport
		The sum of the measures that was general



Supplementary Table 2: SARS-CoV-2 entry in Brazil and association with NPIs and peak stringency

State	Date of first case	Date of community transmission	Interval between initial NPIs and first stringency peak (days) <sup>†</sup>
Acre	Mar/17	Apr/09 [61]	Mar 16-20 (4 days)
Amazonas	Mar/13	Mar/28 [62]	Mar 16-23 (7 days)
Amapá	Mar/20	Mar/28 [63]	Mar 17-22 (5 days)
Pará	Mar/18	Mar/30 [64]	Mar 16-20 (4 days)
Rondonia	Mar/20	Mar/31 [65]	Mar 17-20 (3 days)
Roraima	Mar/21	May/02 [45]	Mar 16-22 (6 days)
Tocantins	Mar/18	Apr/24 [66]	Mar 16-21 (5 days)
Alagoas	Mar/08	Mar/28 [67]	Mar 13-23 (10 days)
Bahia	Mar/06	Mar/19 [68]	Mar 16-21 (5 days)
Ceará	Mar/16	Mar/20 [69]	Mar 16-20 (4 days)
Maranhão	Mar/20	Mar/30 [70]	Mar 16-21 (5 days)
Paraíba	Mar/18	Apr/04 [71]	Mar 17-22 (5 days)
Pernambuco	Mar/12	Mar/17 [72]	Mar 14-23 (9 days)
Piauí	Mar/19	Mar/20 [2]	Mar 16-24 (8 days)
Sergipe	Mar/14	Mar/25 [73]	Mar 16-24 (8 days)
Rio Grande do Norte	Mar/12	Mar/20 [2]	Mar 13-24 (11 days)
Goiás	Mar/12	Mar/15 [74]	Mar 13-24 (11 days)
Distrito Federal	Mar/07	Mar/26 [75]	Mar 11-21 (10 days)
Mato Grosso	Mar/20	Mar/31 [76]	Mar 16-31 (15 days)
Mato Grosso do Sul	Mar/14	Apr/04 [77]	Mar 16-23 (7 days)
Espírito Santo	Mar/06	Mar/30 [78]	Mar 17-21 (4 days)
Minas Gerais	Mar/08	Mar/18 [79]	Mar 16-23 (7 days)
Rio de Janeiro	Mar/05	Mar/13 [80]	Mar 13-16 (3 days)
São Paulo	Feb/26	Mar/13 [80]	Mar 13-20 (7 days)
Paraná	Mar/12	Apr/09 [44]	Mar 16-23 (7 days)
Rio Grande do Sul	Mar/10	Mar/20 [81]	Mar 16-21 (5 days)
Santa Catarina	Mar/12	Mar/18 [82]	Mar 16-19 (3 days)

All dates refer to the year 2020; †, interval between the first NPIs enacted by states and the first peak of the stringency index.

Supplementary Table 3: Summary of the stringency index and subindexes for each state.

State	$\iota$			$O_1$			$O_2$			$O_3$			$O_4$			$C_1$			$C_2$			$C_3$		
	Mean	Max	SD	Mean	Max	SD	Mean	Max	SD	Mean	Max	SD	Mean	Max	SD	Mean	Max	SD	Mean	Max	SD	Mean	Max	SD
AC	0.52	0.68	0.23	0.68	1.00	0.36	0.83	1.00	0.37	0.86	1.00	0.35	0.0	0.0	0.0	0.81	1.00	0.39	0.21	0.25	0.09	0.25	0.50	0.25
AM	0.49	0.74	0.23	0.49	0.83	0.25	0.84	1.00	0.36	0.80	1.00	0.39	0.0	0.0	0.0	0.79	1.00	0.40	0.27	0.33	0.13	0.21	1.00	0.41
AP	0.59	0.96	0.29	0.28	1.00	0.31	0.91	1.00	0.37	0.90	1.00	0.38	0.16	1.00	0.35	0.89	1.00	0.39	0.48	0.75	0.20	0.54	1.00	0.50
PA	0.47	0.61	0.13	0.78	0.83	0.20	0.94	1.00	0.24	0.47	0.50	0.12	0.0	0.0	0.0	0.83	0.93	0.24	0.03	0.17	0.06	0.23	1.00	0.42
RO	0.59	0.73	0.20	0.74	0.83	0.26	0.93	1.00	0.26	0.89	1.00	0.31	0.0	0.0	0.0	0.78	1.00	0.34	0.22	0.25	0.08	0.55	1.00	0.50
RR	0.53	0.57	0.16	0.94	1.00	0.24	0.93	1.00	0.26	0.87	1.00	0.34	0.0	0.0	0.0	0.74	0.86	0.29	0.14	0.17	0.06	0.06	1.00	0.24
TO	0.30	0.49	0.12	0.29	1.00	0.45	0.94	1.00	0.24	0.27	0.75	0.14	0.1	0.5	0.2	0.05	0.50	0.15	0.14	0.25	0.09	0.30	1.00	0.46
AL	0.47	0.67	0.22	0.83	1.00	0.35	0.78	1.00	0.42	0.42	0.50	0.17	0.0	0.0	0.0	0.82	1.00	0.38	0.13	0.17	0.07	0.31	1.00	0.47
BA	0.39	0.67	0.19	0.57	0.67	0.24	0.85	1.00	0.36	0.21	0.25	0.09	0.12	0.50	0.21	0.38	1.00	0.18	0.20	0.25	0.10	0.42	1.00	0.47
CE	0.52	0.75	0.25	0.83	1.00	0.36	0.83	1.00	0.37	0.71	1.00	0.41	0.15	0.50	0.23	0.74	1.00	0.36	0.26	0.58	0.22	0.12	0.25	0.13
MA	0.58	0.72	0.18	0.94	1.00	0.24	0.93	1.00	0.26	0.89	1.00	0.29	0.0	0.0	0.0	0.66	0.86	0.26	0.16	0.33	0.13	0.48	1.00	0.50
PB	0.39	0.53	0.14	0.31	0.33	0.09	0.9	1.00	0.3	0.70	0.75	0.20	0.0	0.0	0.0	0.37	0.43	0.15	0.03	0.17	0.06	0.40	1.00	0.46
PE	0.45	0.55	0.13	0.91	1.00	0.23	0.91	1.00	0.28	0.23	0.25	0.06	0.0	0.0	0.0	0.77	0.86	0.25	0.18	0.50	0.17	0.11	0.25	0.12
PI	0.31	0.74	0.13	0.04	1.00	0.16	0.94	1.00	0.24	0.02	1.00	0.16	0.0	0.0	0.0	0.74	1.00	0.29	0.03	0.17	0.06	0.43	1.00	0.50
SE	0.60	0.76	0.18	0.91	1.00	0.26	0.94	1.00	0.24	0.89	1.00	0.28	0.0	0.0	0.0	0.78	1.00	0.25	0.24	0.33	0.15	0.43	1.00	0.50
RN	0.52	0.67	0.17	0.75	0.83	0.22	0.93	1.00	0.26	0.89	1.00	0.28	0.0	0.0	0.0	0.70	0.79	0.25	0.07	0.08	0.03	0.30	1.00	0.46
GO	0.55	0.64	0.13	0.98	1.00	0.16	0.93	1.00	0.25	0.73	0.75	0.12	0.0	0.0	0.0	0.62	0.86	0.22	0.05	0.17	0.08	0.52	1.00	0.50
DF	0.54	0.70	0.22	0.84	1.00	0.31	0.91	1.00	0.29	0.80	1.00	0.38	0.0	0.0	0.0	0.78	1.00	0.33	0.0	0.0	0.0	0.43	1.00	0.50
MT	0.52	0.62	0.18	0.91	1.00	0.26	0.85	1.00	0.36	0.68	0.75	0.21	0.17	0.50	0.24	0.33	0.86	0.33	0.21	0.25	0.09	0.49	1.00	0.50
MS	0.27	0.31	0.09	0.0	0.0	0.0	0.88	1.00	0.30	0.91	1.00	0.27	0.0	0.0	0.0	0.13	0.14	0.04	0.0	0.0	0.0	0.0	0.0	0.0
ES	0.30	0.41	0.14	0.25	0.50	0.25	0.82	1.00	0.37	0.21	0.25	0.09	0.0	0.0	0.0	0.48	0.64	0.23	0.05	0.08	0.04	0.27	1.00	0.44
MG	0.54	0.66	0.17	0.74	0.83	0.26	0.91	1.00	0.28	0.94	1.00	0.24	0.0	0.0	0.0	0.34	0.43	0.13	0.29	0.33	0.11	0.55	1.00	0.50
RJ	0.48	0.53	0.08	0.98	1.00	0.16	0.98	1.00	0.16	0.49	0.50	0.08	0.0	0.0	0.0	0.60	0.79	0.16	0.16	0.17	0.04	0.16	0.50	0.24
SP	0.57	0.71	0.16	0.95	1.00	0.20	0.94	1.00	0.24	0.90	1.00	0.28	0.0	0.0	0.0	0.90	1.00	0.28	0.0	0.0	0.0	0.30	1.00	0.46
PR	0.45	0.56	0.14	0.63	0.67	0.16	0.94	1.00	0.24	0.47	0.50	0.12	0.0	0.0	0.0	0.50	0.57	0.19	0.17	0.33	0.09	0.41	1.00	0.50
RS	0.47	0.57	0.15	0.78	1.00	0.26	0.9	1.0	0.3	0.48	0.50	0.08	0.0	0.0	0.0	0.63	0.79	0.24	0.26	0.33	0.11	0.27	1.00	0.45
SC	0.51	0.64	0.15	0.93	1.00	0.26	0.9	1.0	0.3	0.44	0.50	0.14	0.0	0.0	0.0	0.59	1.00	0.44	0.46	0.50	0.13	0.27	0.50	0.25

Supplementary Table 4: SARS-CoV-2 spread throughout 27 Brazilian states and effects on the transmission rate

State	Region	Date of first implemented measure	Date of the first change	Lags in days from the first implemented measure and the date of first change	Percentage variation from $\beta_0$ to $\beta_1$
Acre	State	20/03/16	20/05/17	62	46.0 ↑
	Capital	-	20/05/05	50	-32.62 ↓
	Inland cities	-	20/05/18	63	129.08 ↑
Amazonas	State	20/03/16	20/04/06	21	-50.01 ↓
	Capital	-	20/04/06	21	-51.86 ↓
	Inland cities	-	20/04/29	44	-36.94 ↓
Amapá	State	20/03/17	20/04/09	23	-52.591 ↓
	Capital	-	20/04/10	24	-54.63 ↓
	Inland cities	-	20/05/18	62	62.79 ↑
Pará	State	20/03/16	20/04/20	35	-28.26 ↓
	Capital	-	20/04/17	32	-37.17 ↓
	Inland cities	-	20/04/24	39	-22.56 ↓
Roraima	State	20/03/17	20/05/02	46	-33.60 ↓
	Capital	-	20/05/05	49	-37.55 ↓
	Inland cities	-	20/05/02	46	19.08 ↑
Tocantins	State	20/03/16	20/05/05	50	-36.62 ↓
	Capital	-	20/05/05	50	-33.64 ↓
	Inland cities	-	20/05/13	58	-60.65 ↓
Alagoas	State	20/03/16	20/04/09	24	182.22 ↑
	Capital	-	20/04/09	24	166.24 ↑
	Inland cities	-	20/04/09	24	294.64 ↑
Bahia	State	20/03/13	20/04/28	46	-32.13 ↓
	Capital	-	20/04/29	47	-42.05 ↓
	Inland cities	-	20/05/19	67	37.13 ↑
Ceará	State	20/03/16	20/03/30	14	-40.40 ↓
	Capital	-	20/04/01	16	-41.64 ↓
	Inland cities	-	20/04/03	18	-36.36 ↓
Maranhão	State	20/03/16	20/04/02	17	-62.15 ↓
	Capital	-	20/04/04	19	-65.67 ↓
	Inland cities	-	20/04/16	31	-22.12 ↓
Paraíba	State	20/03/16	20/04/15	30	-44.69 ↓
	Capital	-	20/04/17	32	-57.31 ↓
	Inland cities	-	20/05/08	53	-34.04 ↓
Pernambuco	State	20/03/17	20/04/28	42	-15.68 ↓
	Capital	-	20/04/29	43	-36.97 ↓
	Inland cities	-	20/05/12	56	-5.15 ↓
Piauí	State	20/03/14	20/04/14	31	-50.09 ↓
	Capital	-	20/04/15	32	-46.92 ↓
	Inland cities	-	20/04/16	33	-43.59 ↓
Sergipe	State	20/03/16	20/04/29	44	-29.77 ↓
	Capital	-	20/05/08	54	118.35 ↑
	Inland cities	-	20/04/26	41	-29.95 ↓
Rio Grande do Norte	State	20/03/16	20/04/05	20	125.66 ↑
	Capital	-	20/04/06	21	159.91 ↑
	Inland cities	-	20/04/02	17	239.06 ↑
Goiás	State	20/03/13	20/03/28	15	-51.03 ↓
	Capital	-	20/04/01	19	-42.96 ↓
	Inland cities	-	20/03/28	15	-54.95 ↓
Distrito Federal	State	20/03/13	20/04/04	22	-30.54 ↓
	Capital	-	20/04/05	23	-32.92 ↓
	Inland cities	-	20/05/11	59	31.95 ↓
Mato Grosso do Sul	-	20/03/11	20/03/23	12	-63.69 ↓
	State	20/03/16	20/04/04	19	-59.99 ↓
	Capital	-	20/04/04	19	-59.64 ↓
Espírito Santo	Inland cities	-	20/04/06	21	-58.45 ↓
	State	20/03/16	20/05/06	55	33.95 ↑
	Capital	-	20/05/13	58	49.44 ↑
Minas Gerais	Inland cities	-	20/05/03	48	47.86 ↑
	State	20/03/17	20/04/14	28	-45.88 ↓
	Capital	-	20/04/15	29	-33.34 ↓
Rio de Janeiro	Inland cities	-	20/04/15	29	-43.30 ↓
	State	20/03/16	20/03/22	6	-62.50 ↓
	Capital	-	20/03/25	9	-71.71 ↓
São Paulo	Inland cities	-	20/03/23	7	-49.12 ↓
	State	20/03/13	20/03/25	12	-60.17 ↓
	Capital	-	20/03/23	9	-60.30 ↓
Paraná	Inland cities	-	20/05/17	65	-92.28 ↓
	State	20/03/13	20/04/01	19	-55.06 ↓
	Capital	-	20/03/31	18	-56.62 ↓
Rio Grande do Sul	Inland cities	-	20/04/04	23	-55.89 ↓
	State	20/03/16	20/04/03	18	-65.97 ↓
	Capital	-	20/04/05	20	-66.07 ↓
Santa Catarina	Inland cities	-	20/04/02	19	-63.45 ↓
	State	20/03/16	20/03/20	4	-57.01 ↓
	Capital	-	20/03/25	9	-75.60 ↓
Distrito Federal	Inland cities	-	20/05/17	62	64.15 ↑
	State	20/03/16	20/03/24	8	-64.41 ↓
	Capital	-	20/05/17	62	135.58 ↑
Inland cities	-	20/03/24	8	-61.91 ↓	



616

## Supplementary Note 1

### Stringency index calculation: examples

617 **Stringency index calculation: examples**

618 *Ordered measure*

619 In this type of measure there is a well-defined order, it is a simple calculation. Scenarios for an ordered measure with  $N = 3$  is shown in Supplementary  
620 Table 6.  
621

Supplementary Table 6

Scenario 1		Scenario 2		Scenario 3		Scenario 4	
j	$G_O$	j	$G_O$	j	$G_O$	j	$G_O$
0	1	1	1	2	1	3	0
$\iota_O = 0/3 * (2 - 1) = 0$		$\iota_O = 1/3 * (2 - 1) = 0.33$		$\iota_O = 2/3 * (2 - 1) = 0.66$		$\iota_O = 3/3 * (2 - 0) = 0.5$	

622 A more restrictive measure applied in only in few regions has less value  
623 than a slightly less restrictive measure applied across the state, as we see in  
624 scenarios 3 and 4 above.

625 *Cumulative measure*

626 In this case, the evaluation of the cumulative measure  $C_i$  is the sum of  
627 the restrictions applied, and  $G_{c_i}$  is the sum of the targets,  $N$  is the number  
628 of possible restrictions, counting with no restrictions. An example for a  
629 cumulative measure is shown in Supplementary Table 7.

Supplementary Table 7

Restriction to:	Restricted (1) / Open (0)	General (1) / Target to a specific region (0)
Shoppings	1	0
Open markets	1	1
Bar and restaurants	1	1
Gymns	0	0
Parks and beaches	1	0
Religious Temples	1	1
Theaters and cinemas	1	0
$N = 7$	$s_C = 6$	$s_{G_c} = 3$
$\iota_C = (3 + 1.5)/(7 - 1) = 0.75$		

630

## Supplementary Note 2

### Parameter sensitivity analysis

631 **Parameter sensitivity analysis**

632 In this section, a sensitivity analysis is performed to evaluate the effects  
 633 of the mathematical model parameters in the dynamics of  $S$ ,  $E$ ,  $I_a$ ,  $I_s$  and  
 634  $R$  compartments over time. By using an statistical variance-based method,  
 635 described by Sobol (2001) [83], the sensitivity analysis of the SEIR model  
 636 considers the following parameter vector

$$\theta := (\beta_0, \beta_1, \beta_2, \delta, t_1, t_2) \in \mathbb{R}^6, \quad (11)$$

637 assuming that its elements are uniformly distributed ( $\mathcal{U}$ ) in proper intervals:

$$\begin{aligned} \beta_0 &\sim \mathcal{U}(0, 2), & \beta_1 &\sim \mathcal{U}(0, 2), & \beta_2 &\sim \mathcal{U}(0, 2), \\ \delta &\sim \mathcal{U}(0, 0.7), & t_1 &\sim \mathcal{U}(t_1^i, t_1^f), & t_2 &\sim \mathcal{U}(t_2^i, t_2^f). \end{aligned} \quad (12)$$

638 Note that the range of uniform distribution with respect to  $t_1$  and  $t_2$  varies  
 639 according to the Brazilian states. In Fig. 5, the analysis is performed con-  
 640 sidering the Brazilian state of *Distrito Federal* as an example. For this ex-  
 641 ample, the intervals for  $t_1$  and  $t_2$  are given as follows:  $t_1 \sim \mathcal{U}(0, 50)$  and  
 642  $t_2 \sim \mathcal{U}(30, 57)$ . Despite the different dates of community transmission be-  
 643 tween the Brazilian states, the influence of the analyzed parameters presented  
 644 in Fig. 5, remains equivalent in relation to the other states.

645 *The method*

646 To apply the statistical variance-based method, sample values is gener-  
 647 ated for the input factors shown in Eq. (11) by creating matrices  $A$  and  $B$ ,  
 648 each with size  $N \times n$ , where  $N$  is the number of samples and  $n = 6$  is the  
 649 number of parameters being analyzed, given by

$$A = \begin{pmatrix} \theta_1^{(A1)} & \theta_2^{(A1)} & \dots & \theta_i^{(A1)} & \dots & \theta_n^{(A1)} \\ \theta_1^{(A2)} & \theta_2^{(A2)} & \dots & \theta_i^{(A2)} & \dots & \theta_n^{(A2)} \\ \vdots & \vdots & \dots & \vdots & \dots & \vdots \\ \theta_1^{(AN)} & \theta_2^{(AN)} & \dots & \theta_i^{(AN)} & \dots & \theta_n^{(AN)} \end{pmatrix} \quad (13)$$

650 and

$$B = \begin{pmatrix} \theta_1^{(B1)} & \theta_2^{(B1)} & \dots & \theta_i^{(B1)} & \dots & \theta_n^{(B1)} \\ \theta_1^{(B2)} & \theta_2^{(B2)} & \dots & \theta_i^{(B2)} & \dots & \theta_n^{(B2)} \\ \vdots & \vdots & \dots & \vdots & \dots & \vdots \\ \theta_1^{(BN)} & \theta_2^{(BN)} & \dots & \theta_i^{(BN)} & \dots & \theta_n^{(BN)} \end{pmatrix}. \quad (14)$$



651 We then create  $n$  matrices  $A_B^i$ , where column  $i$  comes from matrix  $B$  and all  
 652 other  $n - 1$  columns come from matrix  $A$ :

$$A_B^i = \begin{pmatrix} \theta_1^{(A1)} & \theta_2^{(A1)} & \dots & \theta_i^{(B1)} & \dots & \theta_n^{(A1)} \\ \theta_1^{(A2)} & \theta_2^{(A2)} & \dots & \theta_i^{(B2)} & \dots & \theta_n^{(A2)} \\ \vdots & \vdots & \dots & \vdots & \dots & \vdots \\ \theta_1^{(AN)} & \theta_2^{(AN)} & \dots & \theta_i^{(BN)} & \dots & \theta_n^{(AN)} \end{pmatrix}$$

653 In the matrices  $A$ ,  $B$  and  $A_B^i$ , each row represents a set of parameter to  
 654 be used as an input for the model. Numerical simulations are performed, and  
 655 the output of the sample matrices  $A$ ,  $B$  and  $A_B^i$  are stored as the vectors

$$Y_A = \begin{pmatrix} Y(A^{(A1)}) \\ Y(A^{(A2)}) \\ \vdots \\ Y(A^{(AN)}) \end{pmatrix}; \quad Y_B = \begin{pmatrix} Y(B^{(B1)}) \\ Y(B^{(B2)}) \\ \vdots \\ Y(B^{(BN)}) \end{pmatrix}; \quad Y_{A_B^i}. \quad (15)$$

656 where  $Y_A$ ,  $Y_B$  and  $Y_{A_B^i}$  are output vectors.

657 The final step involves the calculation of the sensitivity indices, using the  
 658 samples generated during the sampling scheme. We computed the total effect  
 659 indices, given by

$$S_{T_i} = 1 - \frac{Y_A \cdot Y_B - f^2}{Y_A \cdot Y_A - f^2} \quad (16)$$

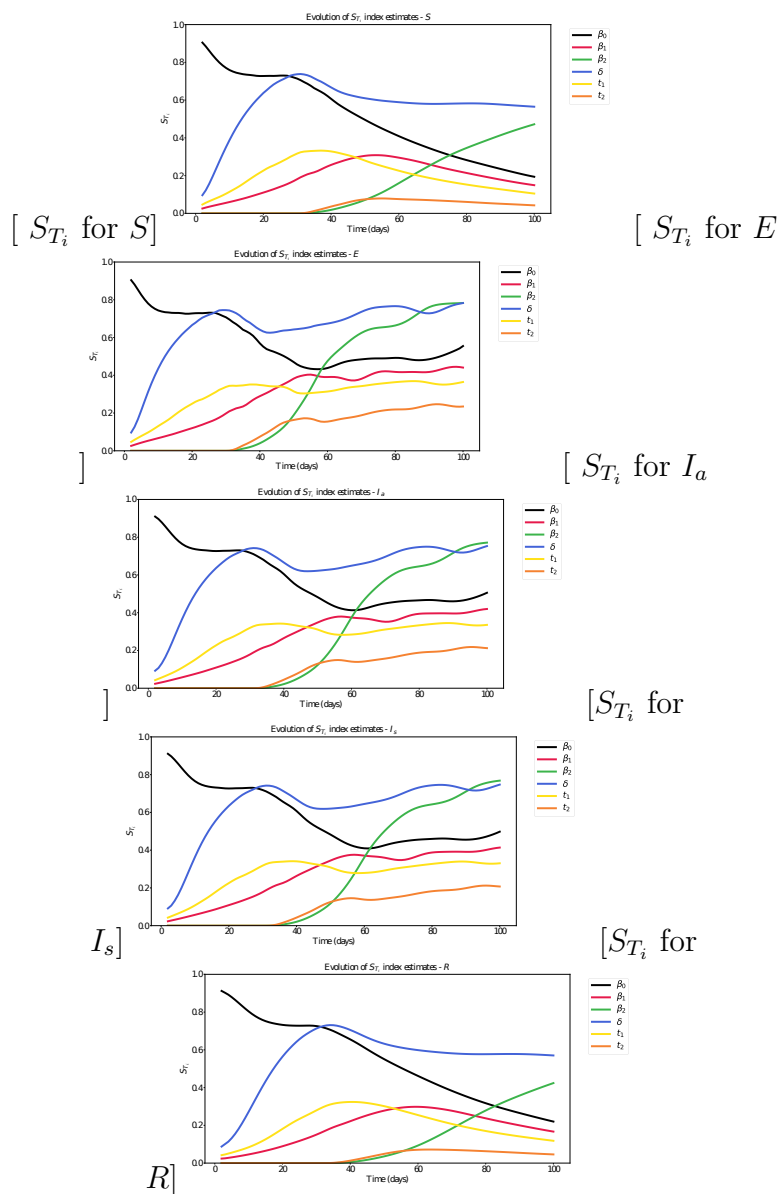
660 where  $f$  is defined as

$$f := \frac{1}{N} \sum_{j=1}^N Y_A^{(j)}. \quad (17)$$

661 This index indicates the contribution of the parameter to the output of the  
 662 model. The importance of each parameter  $i$  is proportional to the value of  
 663  $S_{T_i}$ , meaning that higher  $S_{T_i}$  leads to a higher contribution to the model  
 664 output [84]. Parameters with higher  $S_T$  need a more carefully calibration, as  
 665 small error during the calibration can lead to larger errors to the predictions  
 666 generated by the model. The total effect takes into account higher-order  
 667 interactions among model variables; thus, correlation between variables can  
 668 also be identified using this method. In addition, we also evaluated the influ-  
 669 ence of first-order effects, which do not consider interactions among variables,  
 670 to the model output.

671 *Parameter sensitivity analysis: discussion*

672 In Figure 5, the result of the sensitivity analysis over time is presented.  
673 The numerical simulations were performed using SALib library [85]. The  
674 experiment was conducted generating  $N = 15,000$  parameter combinations,  
675 totaling 120,000 simulations of the model, and the result shows the evolution  
676 of the parameters according to  $S$ ,  $E$ ,  $I_a$ ,  $I_s$  and  $R$  compartments.



Supplementary Figure 5: Sensitivity analysis study for  $S$ ,  $E$ ,  $I_a$ ,  $I_s$  and  $R$  compartments over time. The total effect index  $S_{T_i}$  is shown for each evaluated parameter in each compartment of the SEIR model.

677 **References**

- 678 [1] Organization WH. WHO Director-General’s opening remarks at the  
679 media briefing on COVID-19-11 March 2020. 2020;.
- 680 [2] Ministério da Saúde declara transmissão comunitária nacional;. Avail-  
681 able from: [https://www.saude.gov.br/noticias/agencia-saude/  
682 46568-ministerio-da-saude-declara-transmissao-comunitaria-nacional](https://www.saude.gov.br/noticias/agencia-saude/46568-ministerio-da-saude-declara-transmissao-comunitaria-nacional).
- 683 [3] Aquino EM, Silveira IH, Pescarini JM, Aquino R, Souza-Filho JAd.  
684 Social distancing measures to control the COVID-19 pandemic: po-  
685 tential impacts and challenges in Brazil. *Ciência & Saúde Coletiva*.  
686 2020;25:2423–2446.
- 687 [4] Panovska-Griffiths J. Can mathematical modelling solve the current  
688 Covid-19 crisis? *BMC Public Health*. 2020;.
- 689 [5] Li R, Pei S, Chen B, Song Y, Zhang T, Yang W, et al. Substantial un-  
690 documented infection facilitates the rapid dissemination of novel coron-  
691 avirus (SARS-CoV-2). *Science*. 2020;368(6490):489–493.
- 692 [6] Berger DW, Herkenhoff KF, Huang C, Mongey S. Testing and reopening  
693 in an SEIR model. *Review of Economic Dynamics*. 2020;in press.
- 694 [7] Roche B, Garchitorea A, Roiz D. The impact of lockdown strategies  
695 targeting age groups on the burden of COVID-19 in France. *Epidemics*.  
696 2020;33:100424.
- 697 [8] Oliveira JF, Jorge DC, Veiga RV, Rodrigues MS, Torquato MF, da Silva  
698 NB, et al. Evaluating the burden of COVID-19 on hospital resources  
699 in Bahia, Brazil: A modelling-based analysis of 14.8 million individuals.  
700 *Nature Communications*. 2021;12:333.
- 701 [9] Ferguson N, Laydon D, Nedjati Gilani G, Imai N, Ainslie K, Baguelin  
702 M, et al. Impact of non-pharmaceutical interventions (NPIs) to reduce  
703 COVID19 mortality and healthcare demand; 2020.
- 704 [10] Moghadas SM, Shoukat A, Fitzpatrick MC, Wells CR, Sah P, Pandey  
705 A, et al. Projecting hospital utilization during the COVID-19 outbreaks  
706 in the United States. *Proceedings of the National Academy of Sciences*.  
707 2020;117(16):9122–9126.

- 708 [11] Prem K, Liu Y, Russell TW, Kucharski AJ, Eggo RM, Davies N, et al.  
709 The effect of control strategies to reduce social mixing on outcomes of  
710 the COVID-19 epidemic in Wuhan, China: a modelling study. *The*  
711 *Lancet Public Health*. 2020;5:e261–e270.
- 712 [12] Leung K, Wu JT, Liu D, Leung GM. First-wave COVID-19 transmis-  
713 sibility and severity in China outside Hubei after control measures, and  
714 second-wave scenario planning: a modelling impact assessment. *The*  
715 *Lancet*. 2020;.
- 716 [13] Weitz JS, Beckett SJ, Coenen AR, Demory D, Dominguez-Mirazo M,  
717 Dushoff J, et al. Modeling shield immunity to reduce COVID-19 epi-  
718 demic spread. *Nature Medicine*. 2020;26:849–854.
- 719 [14] Kissler SM, Tedijanto C, Goldstein E, Grad YH, Lipsitch M. Projecting  
720 the transmission dynamics of SARS-CoV-2 through the postpandemic  
721 period. *Science*. 2020;3(21):433. doi:10.1126/science.abb5793.
- 722 [15] Keeling MJ, Rohani P. *Modeling infectious diseases in humans and*  
723 *animals*. Princeton University Press; 2011.
- 724 [16] Coronavírus P. Dataset of cases of COVID-19 in Brazil; 2020. <https://covid.saude.gov.br/>.
- 725  
726 [17] Io B. Dataset of cases of COVID-19 in Brazil; 2020. <https://brasil.io/datasets/>.
- 727  
728 [18] Candido DS, Claro IM, de Jesus JG, Souza WM, Moreira FRR, Delli-  
729 cou S, et al. Evolution and epidemic spread of SARS-CoV-2 in Brazil.  
730 *Science*;369:1255–1260.
- 731 [19] Candido DDS, Watts A, Abade L, Kraemer MU, Pybus OG, Croda J,  
732 et al. Routes for COVID-19 importation in Brazil. *Journal of Travel*  
733 *Medicine*. 2020;27(3):taaa042.
- 734 [20] BOLSONARO JM. Federal level decrees to overcome COVID-  
735 19 pandemic; 2020. [https://www.planalto.gov.br/ccivil\\_03/\\_ato2019-2022/2020/decreto/d10282.htm](https://www.planalto.gov.br/ccivil_03/_ato2019-2022/2020/decreto/d10282.htm).
- 736  
737 [21] System BJ; 2020. [http://www.stf.jus.br/arquivo/cms/](http://www.stf.jus.br/arquivo/cms/noticiaNoticiaStf/anexo/ADPF672liminar.pdf)  
738 [noticiaNoticiaStf/anexo/ADPF672liminar.pdf](http://www.stf.jus.br/arquivo/cms/noticiaNoticiaStf/anexo/ADPF672liminar.pdf).

- 739 [22] InLoco; 2020. <https://mapabrasileirodacovid.inloco.com.br/pt/>.
- 740 [23] Peixoto PS, Marcondes D, Peixoto C, Oliva SM. Modeling future spread  
741 of infections via mobile geolocation data and population dynamics. An  
742 application to COVID-19 in Brazil. *PLOS One*. 2020;15(7):e0235732.
- 743 [24] Ajzenman N, Cavalcanti T, Da Mata D. More than words: Leaders'  
744 speech and risky behavior during a pandemic; 2020.
- 745 [25] Thomas Hale APTP Sam Webster, Kira B. Oxford COVID-19 Govern-  
746 ment Response Tracker. 2020;.
- 747 [26] Lin Q, Zhao S, Gao D, Lou Y, Yang S, Musa SS, et al. A conceptual  
748 model for the coronavirus disease 2019 (COVID-19) outbreak in Wuhan,  
749 China with individual reaction and governmental action. *International  
750 journal of infectious diseases*. 2020;93:211–216.
- 751 [27] Chowell G, Hengartner NW, Castillo-Chavez C, Fenimore PW, Hyman  
752 JM. The basic reproductive number of Ebola and the effects of public  
753 health measures: the cases of Congo and Uganda. *Journal of theoretical  
754 biology*. 2004;229(1):119–126.
- 755 [28] Dehning J, Zierenberg J, Spitzner FP, Wibral M, Neto JP, Wilczek M,  
756 et al. Inferring change points in the spread of COVID-19 reveals the  
757 effectiveness of interventions. *Science*. 2020;369(6500).
- 758 [29] Kissler SM, Tedijanto C, Goldstein E, Grad YH, Lipsitch M. Projecting  
759 the transmission dynamics of SARS-CoV-2 through the postpandemic  
760 period. *Science*. 2020;.
- 761 [30] Ferretti L, Wymant C, Kendall M, Zhao L, Nurtay A, Abeler-Dörner L,  
762 et al. Quantifying SARS-CoV-2 transmission suggests epidemic control  
763 with digital contact tracing. *Science*. 2020;368(6491).
- 764 [31] Mizumoto K, Kagaya K, Zarebski A, Chowell G. Estimating the asymp-  
765 tomatic proportion of coronavirus disease 2019 (COVID-19) cases on  
766 board the Diamond Princess cruise ship, Yokohama, Japan, 2020. *Euro-  
767 surveillance*. 2020;25(10):2000180.
- 768 [32] Cheng HY, Jian SW, Liu DP, Ng TC, Huang WT, Lin HH. Contact trac-  
769 ing assessment of COVID-19 transmission dynamics in Taiwan and risk

- 770 at different exposure periods before and after symptom onset. *JAMA*  
771 *Internal Medicine*. 2020;180:1156–1163.
- 772 [33] Nishiura H, Kobayashi T, Miyama T, Suzuki A, Jung Sm, Hayashi  
773 K, et al. Estimation of the asymptomatic ratio of novel coronavirus  
774 infections (COVID-19). *International Journal of Infectious Diseases*.  
775 2020;94:154.
- 776 [34] Sanche S, Lin YT, Xu C, Romero-Severson E, Hengartner N, Ke R.  
777 High Contagiousness and Rapid Spread of Severe Acute Respiratory  
778 Syndrome Coronavirus 2. *Emerging Infectious Diseases*. 2020;26(7).
- 779 [35] Li Q, Guan X, Wu P, Wang X, Zhou L, Tong Y, et al. Early transmission  
780 dynamics in Wuhan, China, of novel coronavirus–infected pneumonia.  
781 *New England Journal of Medicine*. 2020;382:1199–1207.
- 782 [36] Linton NM, Kobayashi T, Yang Y, Hayashi K, Akhmetzhanov AR, Jung  
783 Sm, et al. Incubation period and other epidemiological characteristics  
784 of 2019 novel coronavirus infections with right truncation: a statistical  
785 analysis of publicly available case data. *Journal of clinical medicine*.  
786 2020;9(2):538.
- 787 [37] Kissler SM, Tedijanto C, Goldstein E, Grad YH, Lipsitch M. Projecting  
788 the transmission dynamics of SARS-CoV-2 through the postpandemic  
789 period. *Science*. 2020;368(6493):860–868.
- 790 [38] Miranda L. PySwarms: a research toolkit for particle swarm optimiza-  
791 tion in Python. *Journal of Open Source Software*. 2018;3(21):433.
- 792 [39] Flaxman S, Mishra S, Gandy A, Unwin HJT, Mellan TA, Coupland  
793 H, et al. Estimating the effects of non-pharmaceutical interventions on  
794 COVID-19 in Europe. *Nature*. 2020;584(7820):257–261.
- 795 [40] Wallinga J, Lipsitch M. How generation intervals shape the relationship  
796 between growth rates and reproductive numbers. *Proceedings of the*  
797 *Royal Society B: Biological Sciences*. 2007;274(1609):599–604.
- 798 [41] Van den Driessche P, Watmough J. Reproduction numbers and sub-  
799 threshold endemic equilibria for compartmental models of disease trans-  
800 mission. *Mathematical biosciences*. 2002;180(1-2):29–48.

- 801 [42] Fraser C. Estimating individual and household reproduction numbers  
802 in an emerging epidemic. *PloS one*. 2007;2(8):e758.
- 803 [43] Jorge DC, Rodrigues MS, Silva MS, Cardim LL, da Silva  
804 NB, Silveira IH, et al.. Assessing the nationwide impact of  
805 COVID-19 mitigation policies on the transmission rate of SARS-  
806 CoV-2 in Brazil; 2020. [https://github.com/Julian-sun/  
807 Assessing-the-nationwide-impact-of-COVID-19-mitigation-policies-on-the-transmission-rate](https://github.com/Julian-sun/Assessing-the-nationwide-impact-of-COVID-19-mitigation-policies-on-the-transmission-rate)  
808 [git](https://github.com/Julian-sun/Assessing-the-nationwide-impact-of-COVID-19-mitigation-policies-on-the-transmission-rate).
- 809 [44] Bittar W. Paraná já registra casos de transmissão comunitária do novo  
810 coronavírus; 2020. [https://cbncuritiba.com/parana-ja-registra-casos-de-  
811 transmissao-comunitaria-do-novo-coronavirus/](https://cbncuritiba.com/parana-ja-registra-casos-de-transmissao-comunitaria-do-novo-coronavirus/).
- 812 [45] Araújo R. Roraima tem transmissão comunitária de  
813 coronavírus, diz secretária-adjunta de Saúde; 2020.  
814 [https://g1.globo.com/rr/roraima/noticia/2020/05/02/roraima-tem-  
815 transmissao-comunitaria-de-coronavirus-diz-secretaria-adjunta-de-  
816 saude.ghtml](https://g1.globo.com/rr/roraima/noticia/2020/05/02/roraima-tem-transmissao-comunitaria-de-coronavirus-diz-secretaria-adjunta-de-saude.ghtml).
- 817 [46] PAULO FDS. Maioria dos estados já tem mais de  
818 70% de ocupação de UTI para Covid-19; 2020.  
819 [https://www1.folha.uol.com.br/cotidiano/2020/05/maioria-dos-  
820 estados-ja-tem-mais-de-70-de-ocupacao-de-uti-para-covid-19.shtml](https://www1.folha.uol.com.br/cotidiano/2020/05/maioria-dos-estados-ja-tem-mais-de-70-de-ocupacao-de-uti-para-covid-19.shtml).
- 821 [47] Tobías A. Evaluation of the lockdowns for the SARS-CoV-2 epidemic  
822 in Italy and Spain after one month follow up. *Science of the Total  
823 Environment*. 2020; p. 138539.
- 824 [48] Alfano V, Ercolano S. The Efficacy of Lockdown Against COVID-19: A  
825 Cross-Country Panel Analysis. *Applied Health Economics and Health  
826 Policy*. 2020; p. 1.
- 827 [49] Travassos C, Oliveira EXG, Viacava F. Desigualdades geográficas e  
828 sociais no acesso aos serviços de saúde no Brasil: 1998 e 2003. *Ciência  
829 Saúde Coletiva*. 2006;11:975 – 986.
- 830 [50] Garcia-Subirats I, Vargas I, Mogollón-Pérez AS, De Paepe P, Da Silva  
831 MRF, Unger JP, et al. Inequities in access to health care in different  
832 health systems: a study in municipalities of central Colombia and north-  
833 eastern Brazil. *International Journal for Equity in Health*. 2014;13(1):10.



- 834 [51] Costa G, Cota W, Ferreira SC. Outbreak diversity in epidemic waves  
835 propagating through distinct geographical scales. *Physical Review Re-*  
836 *search*. 2020;2:043306.
- 837 [52] Jesus JGd, Sacchi C, Candido DdS, Claro IM, Sales FCS, Manuli ER,  
838 et al. Importation and early local transmission of COVID-19 in Brazil,  
839 2020. *Revista do Instituto de Medicina Tropical de São Paulo*. 2020;62.
- 840 [53] Xavier J, Giovanetti M, Adelino T, Fonseca V, Costa AVBd, Ribeiro AA,  
841 et al. The ongoing COVID-19 epidemic in Minas Gerais, Brazil: insights  
842 from epidemiological data and SARS-CoV-2 whole genome sequencing.  
843 *Emerging Microbes Infections*. 2020;9(1):1824–1834.
- 844 [54] Forster P, Forster L, Renfrew C, Forster M. Phylogenetic network anal-  
845 ysis of SARS-CoV-2 genomes. *Proceedings of the National Academy of*  
846 *Sciences*. 2020;117(17):9241–9243.
- 847 [55] Lancet T. COVID-19 in Brazil: “So what?”. *Lancet (London, England)*.  
848 2020;395(10235):1461.
- 849 [56] Rothgerber H, Wilson T, Whaley D, Rosenfeld DL, Humphrey M, Moore  
850 A, et al. Politicizing the Covid-19 pandemic: Ideological differences in  
851 adherence to social distancing; 2020. Available from: [doi10.31234/  
852 osf.io/k23cv](https://doi.org/10.31234/osf.io/k23cv).
- 853 [57] Pataro IM, Oliveira JF, Morato MM, Amad AA, Ramos PI, Pereira FA,  
854 et al. A control framework to optimize public health policies in the  
855 course of the COVID-19 pandemic. *medRxiv*. 2021;.
- 856 [58] He X, Lau EH, Wu P, Deng X, Wang J, Hao X, et al. Temporal dynamics  
857 in viral shedding and transmissibility of COVID-19. *Nature Medicine*.  
858 2020;26(5):672–675.
- 859 [59] Malaquias RF, Silva AF. Understanding the use of mobile banking in  
860 rural areas of Brazil. *Technology in Society*. 2020; p. 101260.
- 861 [60] Pew Research Center. Smartphone Ownership Is Growing Rapidly  
862 Around the World, but Not Always Equally; 2019.
- 863 [61] Valle L. Transmissão comunitária de coronavírus no Acre já é uma  
864 realidade e proteção a grupos de riscos deve ser reforçada, alerta

- 865 médico; 2020. [https://agencia.ac.gov.br/transmissao-comunitaria-de-](https://agencia.ac.gov.br/transmissao-comunitaria-de-coronavirus-no-acre-ja-e-uma-realidade-e-protecao-a-grupos-de-riscos-deve-ser-reforcada-alerta-medico/)  
866 [coronavirus-no-acre-ja-e-uma-realidade-e-protecao-a-grupos-de-riscos-](https://agencia.ac.gov.br/transmissao-comunitaria-de-coronavirus-no-acre-ja-e-uma-realidade-e-protecao-a-grupos-de-riscos-deve-ser-reforcada-alerta-medico/)  
867 [deve-ser-reforcada-alerta-medico/](https://agencia.ac.gov.br/transmissao-comunitaria-de-coronavirus-no-acre-ja-e-uma-realidade-e-protecao-a-grupos-de-riscos-deve-ser-reforcada-alerta-medico/).
- 868 [62] de Estado de Saúde do Amazonas S. Amazonas registra 111 casos  
869 do novo coronavírus e passa a ter transmissão comunitária; 2020.  
870 <http://www.saude.am.gov.br/visualizar-noticia.php?id=4381>.
- 871 [63] Coutinho C. Amapá confirma 1<sup>a</sup> transmissão local de  
872 coronavírus; pacientes não têm sintomas graves; 2020.  
873 [https://g1.globo.com/ap/amapa/noticia/2020/03/28/amapa-confirma-](https://g1.globo.com/ap/amapa/noticia/2020/03/28/amapa-confirma-1a-transmissao-local-de-coronavirus-pacientes-nao-tem-sintomas-graves.ghtml)  
874 [1a-transmissao-local-de-coronavirus-pacientes-nao-tem-sintomas-](https://g1.globo.com/ap/amapa/noticia/2020/03/28/amapa-confirma-1a-transmissao-local-de-coronavirus-pacientes-nao-tem-sintomas-graves.ghtml)  
875 [graves.ghtml](https://g1.globo.com/ap/amapa/noticia/2020/03/28/amapa-confirma-1a-transmissao-local-de-coronavirus-pacientes-nao-tem-sintomas-graves.ghtml).
- 876 [64] Lira M. Pará já tem transmissão comunitária do novo Coronavírus e  
877 26 casos confirmados; 2020. [http://www.saude.pa.gov.br/para-ja-tem-](http://www.saude.pa.gov.br/para-ja-tem-transmissao-comunitaria-do-novo-coronavirus-e-26-casos-confirmados/)  
878 [transmissao-comunitaria-do-novo-coronavirus-e-26-casos-confirmados/](http://www.saude.pa.gov.br/para-ja-tem-transmissao-comunitaria-do-novo-coronavirus-e-26-casos-confirmados/).
- 879 [65] Redação. Morte de idosa é o primeiro caso de trans-  
880 missão comunitária do Coronavírus em Porto Velho; 2020.  
881 [https://www.rondoniagora.com/geral/morte-de-idosa-e-o-primeiro-](https://www.rondoniagora.com/geral/morte-de-idosa-e-o-primeiro-caso-de-transmissao-comunitaria-do-coronavirus-em-porto-velho)  
882 [caso-de-transmissao-comunitaria-do-coronavirus-em-porto-velho](https://www.rondoniagora.com/geral/morte-de-idosa-e-o-primeiro-caso-de-transmissao-comunitaria-do-coronavirus-em-porto-velho).
- 883 [66] de Saúde de Palmas-Tocantins SM; 2020. [https:](https://coronavirus.palmas.to.gov.br/storage/reports/LUbPAX3B1Bu5Jz0FPysEvGKvG3BevrpnalDmBgfo.pdf)  
884 [//coronavirus.palmas.to.gov.br/storage/reports/](https://coronavirus.palmas.to.gov.br/storage/reports/LUbPAX3B1Bu5Jz0FPysEvGKvG3BevrpnalDmBgfo.pdf)  
885 [LUbPAX3B1Bu5Jz0FPysEvGKvG3BevrpnalDmBgfo.pdf](https://coronavirus.palmas.to.gov.br/storage/reports/LUbPAX3B1Bu5Jz0FPysEvGKvG3BevrpnalDmBgfo.pdf).
- 886 [67] de Saúde de Alagoas S. Informe Epidemiológico; 2020.  
887 [https://www.saude.al.gov.br/wp-content/uploads/2020/07/Informe-](https://www.saude.al.gov.br/wp-content/uploads/2020/07/Informe-COVID-19-nº-41-16-DE-ABRIL-14h49.pdf.pdf)  
888 [COVID-19-nº-41-16-DE-ABRIL-14h49.pdf.pdf](https://www.saude.al.gov.br/wp-content/uploads/2020/07/Informe-COVID-19-nº-41-16-DE-ABRIL-14h49.pdf.pdf).
- 889 [68] Brandão J. Bahia tem primeiros casos de  
890 transmissão comunitária de coronavírus; 2020.  
891 [https://www.metro1.com.br/noticias/bahia/89207,bahia-tem-](https://www.metro1.com.br/noticias/bahia/89207,bahia-tem-primeiros-casos-de-transmissao-comunitaria-de-coronavirus)  
892 [primeiros-casos-de-transmissao-comunitaria-de-coronavirus](https://www.metro1.com.br/noticias/bahia/89207,bahia-tem-primeiros-casos-de-transmissao-comunitaria-de-coronavirus).
- 893 [69] do Estado do Ceará G. Nota Técnica n 1; 2020. [https:](https://www.saude.ce.gov.br/wp-content/uploads/sites/9/2020/02/NOTA_TECNICA_COVID19_21_03_20.pdf)  
894 [//www.saude.ce.gov.br/wp-content/uploads/sites/9/2020/](https://www.saude.ce.gov.br/wp-content/uploads/sites/9/2020/02/NOTA_TECNICA_COVID19_21_03_20.pdf)  
895 [02/NOTA\\_TECNICA\\_COVID19\\_21\\_03\\_20.pdf](https://www.saude.ce.gov.br/wp-content/uploads/sites/9/2020/02/NOTA_TECNICA_COVID19_21_03_20.pdf).

- 896 [70] Rafaelle Fróes AB. Maranhão tem casos de transmissão co-  
897 munitária por coronavírus, diz secretário de Saúde; 2020.  
898 [https://g1.globo.com/ma/maranhao/noticia/2020/03/30/maranhao-](https://g1.globo.com/ma/maranhao/noticia/2020/03/30/maranhao-tem-casos-de-transmissao-comunitaria-por-coronavirus-diz-secretario-de-saude.ghtml)  
899 [tem-casos-de-transmissao-comunitaria-por-coronavirus-diz-secretario-](https://g1.globo.com/ma/maranhao/noticia/2020/03/30/maranhao-tem-casos-de-transmissao-comunitaria-por-coronavirus-diz-secretario-de-saude.ghtml)  
900 [de-saude.ghtml](https://g1.globo.com/ma/maranhao/noticia/2020/03/30/maranhao-tem-casos-de-transmissao-comunitaria-por-coronavirus-diz-secretario-de-saude.ghtml).
- 901 [71] do Estado da Paraíba G. Governo reforça necessidade de no-  
902 tificação imediata de casos suspeitos Covid-19 pelos municípios;  
903 2020. [https://paraiba.pb.gov.br/noticias/governo-reforca-necessidade-](https://paraiba.pb.gov.br/noticias/governo-reforca-necessidade-de-notificacao-imediata-de-casos-suspeitos-covid-19-pelos-municipios)  
904 [de-notificacao-imediata-de-casos-suspeitos-covid-19-pelos-municipios](https://paraiba.pb.gov.br/noticias/governo-reforca-necessidade-de-notificacao-imediata-de-casos-suspeitos-covid-19-pelos-municipios).
- 905 [72] Amanda Azevedo CL. Pernambuco tem primeiro  
906 caso de transmissão comunitária de coronavírus;  
907 2020. [https://jc.ne10.uol.com.br/colunas/saude-e-bem-](https://jc.ne10.uol.com.br/colunas/saude-e-bem-estar/2020/03/5602589-pernambuco-tem-primeiro-caso-de-transmissao-comunitaria-de-coronavirus.html)  
908 [estar/2020/03/5602589-pernambuco-tem-primeiro-caso-de-transmissao-](https://jc.ne10.uol.com.br/colunas/saude-e-bem-estar/2020/03/5602589-pernambuco-tem-primeiro-caso-de-transmissao-comunitaria-de-coronavirus.html)  
909 [comunitaria-de-coronavirus.html](https://jc.ne10.uol.com.br/colunas/saude-e-bem-estar/2020/03/5602589-pernambuco-tem-primeiro-caso-de-transmissao-comunitaria-de-coronavirus.html).
- 910 [73] de Estado da Saúde Sergipe S. Sergipe tem mais um caso confirmado de  
911 coronavírus; 2020. [https://www.saude.se.gov.br/sergipe-tem-mais-um-](https://www.saude.se.gov.br/sergipe-tem-mais-um-caso-confirmado-de-coronavirus/)  
912 [caso-confirmado-de-coronavirus/](https://www.saude.se.gov.br/sergipe-tem-mais-um-caso-confirmado-de-coronavirus/).
- 913 [74] de Estado da Saúde Goiás S. Governo de Goiás destaca  
914 que união de esforços pode conter novo coronavírus; 2020.  
915 [https://www.saude.go.gov.br/coronavirus/noticias-coronavirus/10578-](https://www.saude.go.gov.br/coronavirus/noticias-coronavirus/10578-governo-de-goias-destaca-que-uniao-de-esforcos-pode-conter-novo-coronavirus)  
916 [governo-de-goias-destaca-que-uniao-de-esforcos-pode-conter-novo-](https://www.saude.go.gov.br/coronavirus/noticias-coronavirus/10578-governo-de-goias-destaca-que-uniao-de-esforcos-pode-conter-novo-coronavirus)  
917 [coronavirus](https://www.saude.go.gov.br/coronavirus/noticias-coronavirus/10578-governo-de-goias-destaca-que-uniao-de-esforcos-pode-conter-novo-coronavirus).
- 918 [75] de Saúde do Distrito Federal S. Boletim Epidemiológico; 2020.  
919 [http://www.saude.df.gov.br/wp-content/uploads/2020/03/](http://www.saude.df.gov.br/wp-content/uploads/2020/03/26-Boletim-COVID_DF-26.03.2020_2vers~ao-1.pdf)  
920 [26-Boletim-COVID\\_DF-26.03.2020\\_2vers~ao-1.pdf](http://www.saude.df.gov.br/wp-content/uploads/2020/03/26-Boletim-COVID_DF-26.03.2020_2vers~ao-1.pdf).
- 921 [76] MT G. Governo reconhece que há transmissão comu-  
922 nitária de coronavírus em três municípios de MT; 2020.  
923 [https://g1.globo.com/mt/mato-grosso/noticia/2020/04/01/governo-](https://g1.globo.com/mt/mato-grosso/noticia/2020/04/01/governo-reconhece-que-ha-transmissao-comunitaria-de-coronavirus-em-tres-municipios-de-mt.ghtml)  
924 [reconhece-que-ha-transmissao-comunitaria-de-coronavirus-em-tres-](https://g1.globo.com/mt/mato-grosso/noticia/2020/04/01/governo-reconhece-que-ha-transmissao-comunitaria-de-coronavirus-em-tres-municipios-de-mt.ghtml)  
925 [municipios-de-mt.ghtml](https://g1.globo.com/mt/mato-grosso/noticia/2020/04/01/governo-reconhece-que-ha-transmissao-comunitaria-de-coronavirus-em-tres-municipios-de-mt.ghtml).
- 926 [77] Ângela Kempfer. Com transmissão comunitária, MS  
927 já tem 113 casos e 4 mortes por coronavírus; 2020.

- 928 [https://www.campograndenews.com.br/cidades/capital/com-](https://www.campograndenews.com.br/cidades/capital/com-transmissao-comunitaria-ms-ja-tem-113-casos-e-4-mortes-por-coronavirus)  
929 [transmissao-comunitaria-ms-ja-tem-113-casos-e-4-mortes-por-](https://www.campograndenews.com.br/cidades/capital/com-transmissao-comunitaria-ms-ja-tem-113-casos-e-4-mortes-por-coronavirus)  
930 [coronavirus](https://www.campograndenews.com.br/cidades/capital/com-transmissao-comunitaria-ms-ja-tem-113-casos-e-4-mortes-por-coronavirus).
- 931 [78] do Estado do Espírito Santo G. NOTA TÉCNICA  
932 COVID-19 N° 04/2020 – GEVS/SESA/ES; 2020.  
933 <https://coronavirus.es.gov.br/Media/Coronavirus/NotasTecnicas>.
- 934 [79] do Estado de Minas Gerais G. BOLETIM INFORMATIVO DIÁRIO;  
935 2020. [https://coronavirus.saude.mg.gov.br/images/boletim/](https://coronavirus.saude.mg.gov.br/images/boletim/03-marco/18032020_Boletim_epidemiologico_COVID-19_MG.pdf)  
936 [03-marco/18032020\\_Boletim\\_epidemiologico\\_COVID-19\\_MG.pdf](https://coronavirus.saude.mg.gov.br/images/boletim/03-marco/18032020_Boletim_epidemiologico_COVID-19_MG.pdf).
- 937 [80] Amorim F. Brasil confirma transmissão comunitária de coronavírus;  
938 entenda o que é; 2020. [https://noticias.uol.com.br/saude/ultimas-](https://noticias.uol.com.br/saude/ultimas-noticias/redacao/2020/03/13/brasil-confirma-transmissao-comunitaria-de-coronavirus-entenda-o-que-e.htm)  
939 [noticias/redacao/2020/03/13/brasil-confirma-transmissao-comunitaria-](https://noticias.uol.com.br/saude/ultimas-noticias/redacao/2020/03/13/brasil-confirma-transmissao-comunitaria-de-coronavirus-entenda-o-que-e.htm)  
940 [de-coronavirus-entenda-o-que-e.htm](https://noticias.uol.com.br/saude/ultimas-noticias/redacao/2020/03/13/brasil-confirma-transmissao-comunitaria-de-coronavirus-entenda-o-que-e.htm).
- 941 [81] Secom R. RS confirma transmissão comunitária do novo coro-  
942 navírus; 2020. Available from: [https://estado.rs.gov.br/](https://estado.rs.gov.br/rs-confirma-transmissao-comunitaria-do-novo-coronavirus)  
943 [rs-confirma-transmissao-comunitaria-do-novo-coronavirus](https://estado.rs.gov.br/rs-confirma-transmissao-comunitaria-do-novo-coronavirus).
- 944 [82] do Estado de Saúde Santa Catarina S. CORO-  
945 NAVÍRUS EM SC: GOVERNO CONFIRMA 14 CA-  
946 SOS E TRANSMISSÕES COMUNITÁRIAS; 2020.  
947 [https://www.saude.sc.gov.br/coronavirus/CORONAVIRUS-EM-](https://www.saude.sc.gov.br/coronavirus/CORONAVIRUS-EM-SC-GOVERNO-CONFIRMA-14-CASOS-E-TRANSMISSOES-COMUNITARIAS.html)  
948 [SC-GOVERNO-CONFIRMA-14-CASOS-E-TRANSMISSOES-](https://www.saude.sc.gov.br/coronavirus/CORONAVIRUS-EM-SC-GOVERNO-CONFIRMA-14-CASOS-E-TRANSMISSOES-COMUNITARIAS.html)  
949 [COMUNITARIAS.html](https://www.saude.sc.gov.br/coronavirus/CORONAVIRUS-EM-SC-GOVERNO-CONFIRMA-14-CASOS-E-TRANSMISSOES-COMUNITARIAS.html).
- 950 [83] Sobol IM. Global sensitivity indices for nonlinear mathematical mod-  
951 els and their Monte–Carlo estimates. *Mathematics and Computers in*  
952 *Simulation*. 2001;55(1-3):271–280.
- 953 [84] Saltelli A, Ratto M, Andres T, Campolongo F, Cariboni J, Gatelli D,  
954 et al. *Global Sensitivity Analysis: The Primer*. John Wiley & Sons;  
955 2008.
- 956 [85] Herman J, Usher W. SALib: An open-source Python library for Sen-  
957 sitivity Analysis. *The Journal of Open Source Software*. 2017;2(9).  
958 doi:10.21105/joss.00097.