

Epidemiological model with anomalous kinetics - The Covid-19 pandemics

Ugur Tirnakli^{1*} and Constantino Tsallis^{2,3,4†}

¹*Department of Physics, Faculty of Science,
Ege University, 35100 Izmir, Turkey*

²*Centro Brasileiro de Pesquisas Fisicas and National
Institute of Science and Technology for Complex Systems*

³*Santa Fe Institute, 1399 Hyde Park Road,
Santa Fe, New Mexico 87501, USA*

⁴*Complexity Science Hub Vienna,
Josefstädter Strasse 39, 1080 Vienna, Austria*

(Dated: June 24, 2020)

We generalize the phenomenological, law of mass action-like, SIR and SEIR epidemiological models to situations with anomalous kinetics. Specifically, the contagion and removal terms, normally linear in the fraction I of infecteds, are taken to depend on $I^{q_{up}}$ and $I^{q_{down}}$, respectively. These dependencies can be understood as highly reduced effective descriptions of contagion via anomalous diffusion of susceptibles and infecteds in fractal geometries, and removal (i.e., recovery or death) via complex mechanisms leading to slowly decaying removal-time distributions. We obtain rather convincing fits to time series for both active cases and mortality with the same values of (q_{up}, q_{down}) for a given country, suggesting that such aspects may in fact be present in the evolution of the Covid-19 pandemic. We also obtain approximate values for the effective population N_{eff} , which turns out to be a small percentage of the entire population N for each country.

INTRODUCTION

The classic and still widely used SIR and SEIR epidemiological models [1] represent contagion and removal in analogy with the law of mass action in chemistry, corresponding to a mean-field approach based on the assumption of homogeneous mixing. The latter hypothesis constitutes an oversimplification, particularly for the Covid-19 pandemic, due to strong government intervention (social distancing, lockdown) and under-reporting as the number of cases grows beyond testing capacity. Diverse aspects are discussed, assuming homogeneous or non-homogeneous mixing, in epidemiological models in general [2–4], as well as in current pandemic [5–15].

Epidemic models can be formulated on varied levels of detail, from individual agents in geographically realistic settings, to models of large populations without spatial structure. Each level has its own benefits and costs; study of an ensemble of models is expected to yield a more reliable description than any single approach in isolation. In chemical kinetics of processes involving anomalous diffusion and/or complex conformational pathways, effective descriptions typically employ noninteger power-law terms where the mean-field or mass-action analysis involves integer powers of concentrations, as in the analysis of reassociation of folded proteins [16, 17]. With this motivation, we consider SIR- and SEIR-like models in which the contagion and removal terms depend on $I^{q_{up}}$ and $I^{q_{down}}$, respectively, instead of depending linearly on I , as they do in mean-field/homogeneous descriptions. Such generalization is consistent with anomalous human mobility and spatial disease dynamics [18, 19].

Let us now follow along lines close to [16], which provided satisfactory description of reassociation in folded proteins [17]. Consider the equation

$$\frac{dy}{dt} = ay^q \quad (q \in \mathcal{R}; t \geq 0; y(0) > 0). \quad (1)$$

Its solution is given by

$$y(t) = y(0) e_q^a [y(0)]^{q-1} t, \quad (2)$$

with $e_q^z \equiv [1 + (1 - q)z]^{1/(1-q)}$ ($e_1^z = e^z$). We have a monotonically increasing function $y(t)$ for $a > 0$ (with infinite support if $q \leq 1$ and finite support if $q > 1$), and a monotonically decreasing function for $a < 0$ (with infinite support if $q \geq 1$ and finite support if $q < 1$). Notice an important point that will permeate through this entire paper: if $q = 1$, and only then, the coefficient a (which characterizes the scale of the evolution of $y(t)/y(0)$ with time) is not renormalized by the initial condition $y(0)$. If $q \neq 1$, the effective constant $\{a [y(0)]^{q-1}\}$ will differ from a ; the difference can be very important depending on the values of q and $y(0)$.

GENERALIZED MODELS

q -SIR Model

The SIR set of equations is (see [1] for instance) as follows:

$$\begin{aligned}\frac{dS}{dt} &= -\beta S \frac{I}{N} \\ \frac{dI}{dt} &= \beta S \frac{I}{N} - \gamma I \\ \frac{dR}{dt} &= \gamma I,\end{aligned}\tag{3}$$

with $\beta > 0$, $\gamma > 0$, and $S + I + R = N = \text{constant}$, N is the total population, $S \equiv \text{susceptible}$, $I \equiv \text{infected}$, $R \equiv \text{removed}$ (*removed* means either recovered or dead). Now let us q -generalize this model as follows:

$$\begin{aligned}\frac{d(S/N_{\text{eff}})}{dt} &= -\beta \frac{S}{N_{\text{eff}}} \left(\frac{I}{N_{\text{eff}}}\right)^{q_{up}} \\ \frac{d(I/N_{\text{eff}})}{dt} &= \beta \frac{S}{N_{\text{eff}}} \left(\frac{I}{N_{\text{eff}}}\right)^{q_{up}} - \gamma \left(\frac{I}{N_{\text{eff}}}\right)^{q_{down}} \\ \frac{d(R/N_{\text{eff}})}{dt} &= \gamma \left(\frac{I}{N_{\text{eff}}}\right)^{q_{down}}\end{aligned}\tag{4}$$

with $q_{up} \leq 1$ and $q_{down} \geq 1$, where the bilinear term is generalized into a non bilinear one and the *effective* population $N_{\text{eff}} = \rho N$ with $\rho \leq 1$. These equations generically have a single peak for $I(t)$. In all cases we have $S(t) + I(t) + R(t) = N_{\text{eff}}$; moreover, $0 \leq S(t)/N_{\text{eff}}, I(t)/N_{\text{eff}}, R(t)/N_{\text{eff}} \leq 1$. Let us qualitatively compare the SIR and q SIR models given by Eqs. (3) and (4) respectively by focusing on the β term, i.e., let us compare $\beta_{\text{SIR}} [S(t)/N] [I(t)/N]$ with $\beta_{q\text{SIR}} [S(t)/N_{\text{eff}}] [I(t)/N_{\text{eff}}]^{q_{up}} = \frac{\beta_{q\text{SIR}}}{[I(t)/N_{\text{eff}}]^{1-q_{up}}} [S(t)/N_{\text{eff}}] [I(t)/N_{\text{eff}}]$; we remind that $\rho = 1$ yields $N_{\text{eff}} = N$. It follows that roughly $\beta_{\text{SIR}} \simeq \frac{\beta_{q\text{SIR}}}{[I(t)/N_{\text{eff}}]^{1-q_{up}}}$. Since, before the peak, $I(t)$ steadily *increases* with time, a fixed value for $(1 - q_{up}) > 0$ acts qualitatively as a phenomenological time-dependent $\beta_{\text{SIR}}(t)$ which *decreases* with time. These tendencies are similarly realistic since they both reflect, each in its own manner, the generic action of pandemic authorities to isolate people in order to decrease the contagion represented by the β term in both models.

The particular limit $R(t) \equiv 0$ (hence $S(t) + I(t) = N_{\text{eff}}$) in Eqs. (4) yields $I(t) = I(0) e^{-\gamma [I(0)/N_{\text{eff}}]^{q_{down}} t}$ if $\beta = 0$, and $I(t) = \frac{I(0) e^{\beta t}}{(I(0)/N_{\text{eff}}) e^{\beta t} + [1 - I(0)/N_{\text{eff}}]}$ if $(\gamma, q_{up}) = (0, 1)$. For generic $q_{up} < 1$ and $R(t) \equiv 0$, Eqs. (4) yield

$$\int_{S(0)/N_{\text{eff}}}^{S/N_{\text{eff}}} \frac{dx}{x(1-x)^{q_{up}}} = -\beta t,\tag{5}$$

hence

$$-\beta t = \frac{(1 - S/N_{\text{eff}})^{1-q_{up}} \Gamma(q_{up}) {}_2\tilde{F}_1(1, 1; q_{up} + 1; N_{\text{eff}}/S)}{S/N_{\text{eff}}} - \frac{(1 - S(0)/N_{\text{eff}})^{1-q_{up}} \Gamma(q_{up}) {}_2\tilde{F}_1(1, 1; q_{up} + 1; N_{\text{eff}}/S(0))}{S(0)/N_{\text{eff}}}$$

where Γ is the Gamma function and \tilde{F} is the regularized hypergeometric function. As an illustration let us consider $q_{up} = 1/2$. It follows $\ln \left[\frac{1 - \sqrt{1 - S/N_{\text{eff}}}}{1 + \sqrt{1 - S/N_{\text{eff}}}} \times \frac{1 + \sqrt{1 - S(0)/N_{\text{eff}}}}{1 - \sqrt{1 - S(0)/N_{\text{eff}}}} \right] = -\beta t$, hence

$$\frac{I(t)}{N_{\text{eff}}} = 1 - \frac{S(t)}{N_{\text{eff}}} = \left\{ \frac{1 + \sqrt{I(0)/N_{\text{eff}}} - \left[1 - \sqrt{I(0)/N_{\text{eff}}}\right] e^{-\beta t}}{1 + \sqrt{I(0)/N_{\text{eff}}} + \left[1 - \sqrt{I(0)/N_{\text{eff}}}\right] e^{-\beta t}} \right\}^2.\tag{6}$$

Before the peak, $I(t)$ increases nearly exponentially if $q_{up} = 1$ and is roughly characterized by $I(t) \simeq t^{\frac{1}{1-q_{up}}}$ if $q_{up} < 1$. After the peak, $I(t)$ decreases exponentially if $q_{down} = 1$ and is roughly characterized by $I(t) \simeq t^{-\frac{1}{q_{down}-1}}$

if $q_{down} > 1$. These various aspects are illustrated in Fig. 1. An important remark is necessary at this point. The possibility for non bilinear coupling $\beta (S/N_{eff}) (I/N_{eff})^{q_{up}}$ between subpopulations seems quite natural since non-homogeneous mixing involves complex dynamics and networks for the susceptible and infected people, as well as for the infecting agent of the disease. But why would it be necessary to also allow, at the present phenomenological level, a nonlinear behavior for the one-subpopulation term $\gamma (I/N_{eff})^{q_{down}}$ itself? The answer might be found in nontrivial (multi)fractal-path-like relaxation mechanisms such as the one that is known to happen in re-associations in folded proteins [16, 17].

We have checked that the q -SIR model provides functions $I(t)$ which are numerically close but different from the quite performing ansatz in [5], namely $I(t) \propto t^{\bar{\alpha}} e^{-\bar{\beta} t^{\bar{\gamma}}}$, whose behavior before and after the peak are respectively $t^{\bar{\alpha}}$ and $t^{\bar{\alpha}-\bar{\gamma}/(\bar{\gamma}-1)}$. Still, both approaches have power-law behaviors before and after the peak. We also checked $I(t) \propto e^{\beta_{up} t} \times e^{-\beta_{down} t}$, and the results are once again numerically close but nevertheless different from the ansatz in [5].

q -SEIR Model

The q -SIR model is not capable (for any choice of its parameters) of correctly fitting the epidemiologically crucial function $I(t)$ for the COVID-19 available data for various countries. Then, we next q -generalize the SEIR model with no vital dynamics (no births, no deaths), which is given by

$$\begin{aligned} \frac{dS}{dt} &= -\beta S \frac{I}{N} \\ \frac{dE}{dt} &= \beta S \frac{I}{N} - \sigma E \\ \frac{dI}{dt} &= \sigma E - \gamma I \\ \frac{dR}{dt} &= \gamma I \end{aligned} \tag{7}$$

with $S + E + I + R = N$, where E stands for *exposed*. We can generalize it as follows:

$$\begin{aligned} \frac{d(S/N_{eff})}{dt} &= -\beta \frac{S}{N_{eff}} \left(\frac{I}{N_{eff}} \right)^{q_{up}} \\ \frac{d(E/N_{eff})}{dt} &= \beta \frac{S}{N_{eff}} \left(\frac{I}{N_{eff}} \right)^{q_{up}} - \sigma \frac{E}{N_{eff}} \\ \frac{d(I/N_{eff})}{dt} &= \sigma \frac{E}{N_{eff}} - \gamma \left(\frac{I}{N_{eff}} \right)^{q_{down}} \\ \frac{d(R/N_{eff})}{dt} &= \gamma \left(\frac{I}{N_{eff}} \right)^{q_{down}}, \end{aligned} \tag{8}$$

where once again we have generalized the bilinear couplings between subpopulations into non bilinear ones, and the linear γI term into a nonlinear one. Its particular instance $E(t) \equiv 0$ (hence $S(t) + I(t) + R(t) = N_{eff}$) precisely recovers the q -SIR model, as defined here above. Notice that the *cumulative function* $C(t)$ of $I(t)$ is given by $C(t) \equiv \int_0^t dt' I(t') = \int_0^t dt' \left[\frac{1}{\gamma} \frac{dR(t')}{dt'} \right]^{1/q_{down}}$, which differs from the expression $C(t) = R(t)$ currently used in the SEIR model. It is of course possible to further generalize the above q -SEIR set of four equations by allowing in the right hand S^{q_s} (with $q_s \neq 1$) instead of S , and E^{q_e} (with $q_e \neq 1$) instead of E , but no need has emerged to increase the number of free parameters of the model, since the allowance for $q_{up} < 1$ and for $q_{down} > 1$ appears to be enough for satisfactorily reproducing all the relevant features of the COVID-19 available data. Indeed, the variable which is epidemiologically crucial for avoiding a medical-hospital collapse in a given region is $I(t)$, and this time dependence generically appears to be very satisfactorily described by just allowing the possibility for $q_{up} \neq 1$ and/or $q_{down} \neq 1$. Notice that $\beta (I/N_{eff})^{q_{up}}$ is a *convex* function of (I/N_{eff}) for $0 < q_{up} < 1$, and $\gamma (I/N_{eff})^{q_{down}}$ is a *concave* function of (I/N_{eff}) for $q_{down} > 1$. These tendencies, illustrated in Fig. 2, as well as the numerical values for the various coefficients of the model, are in agreement with the available medical/epidemiological evidence [20–24]. Notice also that, through $\tau \equiv \gamma t$ and $(\bar{I}/N_{eff}) \equiv (I/N_{eff})^{q_{down}}$, we can eliminate, without loss of generality, two fitting

parameters (e.g., γ and q_{down}) within the set of equations (8). Finally notice that, if we consider $\beta = \sigma = 0$, we precisely recover Eq. (1) and its analytical solution in Eq. (2). Therefore, even if the general analytical solution of the set of equations (8) is not available (due to mathematical intractability), the initials conditions naturally renormalize (in a nontrivial manner) the coefficients (β, σ, γ) of the model, and the effective population N_{eff} becomes a fitting parameter of the model. These renormalizations disappear of course if $q_{up} = q_{down} = 1$, i.e., for the standard SEIR model; concomitantly N_{eff} ($= \rho N$, with $\rho \leq 1$) ceases being a fitting parameter and can be directly taken from the actual population N of the particular region under focus. For other mathematical aspects of nonlinear models such as the present one, the reader may refer to [25].

APPLICATION OF q -SEIR MODEL TO COVID-19 PANDEMICS

In Figs. 3 and 4 we have illustrations of this model for realistic COVID-19 cases (see [5] where we identify the present variable I with the number of *active cases*, as regularly updated online [26]). We verify that the description provided by the q -SEIR model for non-homogeneous epidemiological mixing is indeed quite satisfactory. Let us also mention that we have not followed here a road looking for the minimal number of free parameters, but rather a road where various realistic elements are taken into account, even if at the fitting-parameter level some of them might be redundant. Any further model yielding a deeper expression of exponents such as q_{up} and q_{down} in terms of microscopic/mesoscopic mechanisms is very welcome. This is by no means a trivial enterprise but, if successfully implemented, this could follow a road analogous to anomalous diffusion, namely from Fourier's heat equation through Muskat's *Porous Medium Equation* [27] to Plastino and Plastino nonlinear Fokker-Planck equation [28], which in turn implied the scaling law $\bar{\alpha} = 2/(3 - q)$ [29] ($\bar{\alpha}$ being defined through the scaling between x^2 and t^α , and q being the index value of the q -Gaussian solution for the nonlinear Fokker-Planck equation). This scaling law recovers, for $q = 1$, the Brownian motion scaling $\langle x^2 \rangle \propto t$, and was impressively validated within 2% error in granular matter [30]. This phenomenological line was later legitimated on the basis of microscopic overdamped mechanisms ($q = 0$ for the motion of vortices in type-II superconductors [31], later extended to D -dimensional $1/r^\lambda$ short-range repulsive interactions ($\lambda/D \geq 1$), leading to $q = 1 - \lambda/D$ [32]), which satisfy the zeroth law of thermodynamics, an H -theorem, and Carnot's cycle efficiency, with microscopically established analytical equations of state [33–36]. Summarizing, we have q -generalized, through Eqs. (8), the SEIR epidemiological model. By solving this set of deterministic equations given the initial conditions and its parameters, we obtain $[S(t), E(t), I(t), R(t)]$, as well as the cumulative function $C(t)$. We have focused on $I(t)$ because the hardest quantities for satisfactorily fitting are the number of active cases and that of deaths, and also because those are the most crucial quantities for making correct sanitary and epidemiological decisions.

On a general perspective, let us stress that the law of mass action, the Arrhenius relaxation law, and the Kramers mechanism [37] of escape over a barrier through normal diffusion constitute pillars of contemporary chemistry. They are consistent with Boltzmann-Gibbs (BG) statistical mechanics and constitute some of its important successes. However, they need to be modified when the system exhibits complexity due to hierarchical space and/or time structures. It is along this line that a generalization has been proposed based on nonadditive entropies [38], characterized by the index q ($q = 1$ recovers the BG frame): see for instance [16, 39–43].

At the level of the numerical performance of the present q -SEIR model for the COVID-19 pandemic, it advantageously compares with models including time-dependent coefficients [44–47]. For instance, the SEIQRDP model [44, 45, 47] includes seven equations with several coefficients, two of them phenomenologically being time-dependent. It does fit rather well the COVID-19 reported data until a given date. However, the q -SEIR, which includes four (instead of seven) equations with several coefficients, all of them being fixed in time, fits definitively better the same data for all the countries that we have checked: see illustrations in Fig. 5.

At this stage, let us emphasize a rather interesting fact. Neither the SIR nor the SEIR models distinguish the *dead* from the *recovered*, within the *removed* (R) subpopulation. However, the same values for (q_{up}, q_{down}) fit satisfactorily *both* the numbers of active cases and of deaths per day for a given country, as shown in Figs. 3 and 4.

CONCLUSIONS

To conclude let us remind that the q -SEIR model recovers, as particular instances, the q -SIR model introduced here, as well as the traditional SEIR and SIR ones. It has, however, an important mathematical difference with the usual epidemiological models. Virtually all these models (SIR, SEIR, SAIR, SEAIR, SIRASD, SEAUCR, SEIQRDP) are defined through equations that are multi-linear in their variables, i.e., that are linear in each one of its variables. This

multi-linearity disappears in models such as the present q -SIR and q -SEIR ones if either q_{up} or q_{down} differ from unity. Consequently N_{eff} definitively plays a different role since it sensibly enters within the set of fitting parameters of the q -generalized models; its precise interpretation remains to be elucidated, perhaps in terms of the socio-geographical circumstances of that particular region. Last but not least, let us stress that the aim of the present q -SEIR model is to *mesoscopically describe a single epidemiological peak*, including its realistic *power-law* growth and relaxation in the time evolution of the number of active cases, and by no means to qualitatively address possibilities such as the emergence of two or more peaks, a task which is (sort of naturally, but possibly less justified on fundamental grounds) attainable within approaches using traditional (multilinear) models where one or more coefficients are allowed to phenomenologically depend on time by realistically adjusting their evolution along the actual epidemics.

Acknowledgments

We have greatly benefitted from very fruitful discussions with R. Dickman, T. Pereira and D. Eroglu, as well as from partial financial support by CNPq and Faperj (Brazilian agencies).

* Electronic address: ugur.tirnakli@ege.edu.tr

† Electronic address: tsallis@cbpf.br

- [1] D.J. Daley and J.M. Gani, *Epidemic Modelling: An Introduction*, (Cambridge University Press, 1999).
- [2] S. Bansal, B.T. Grenfell and L.A. Meyers, *When individual behaviour matters: homogeneous and network models in epidemiology*, J.R. Soc. Interface **4**, 879 (2007).
- [3] T.L. Burr and G. Chowell, *Signatures of non-homogeneous mixing in disease outbreaks*, Mathematical and Computer Modelling **48**, 122 (2008).
- [4] R.M. Milwid, T.L. O’Sullivan, Z. Poljak, M. Laskowski and A.L. Greer, *Comparing the effects of non-homogenous mixing patterns on epidemiological outcomes in equine populations: A mathematical modelling study*, Scientific Reports **9**, 3227 (2019).
- [5] C. Tsallis and U. Tirnakli, *Predicting COVID-19 peaks around the world*, Frontiers in Physics **8**, 217 (2020).
- [6] G. Sebastiani, M. Massa and E. Riboli, *Covid?19 epidemic in Italy: evolution, projections and impact of government measures*, European J. Epidemiology **35**, 341-345 (2020).
- [7] R. Chowdhury et al, The Global Dynamic Interventions Strategies for COVID?19 Collaborative Group, *Dynamic interventions to control COVID-19 pandemic: a multivariate prediction modelling study comparing 16 worldwide countries*, European J. Epidemiology **35**, 389?399 (2020).
- [8] L. Wang, H. Chen, S. Qiu and H. Song, *Evaluation of control measures for COVID-19 in Wuhan, China*, J. of Infection (2020), in press, doi: 10.1016/j.jinf.2020.03.043
- [9] C. Manchein, E.L. Brugnago, R.M. da Silva C.F.O. Mendes and M.W. Beims, *Strong correlations between power-law growth of COVID-19 in four continents and the inefficiency of soft quarantine strategies*, Chaos **30**, 041102 (2020), doi: 10.1063/5.0009454
- [10] R. Ashurov and S. Umarov, *Determination of the order of fractional derivative for subdiffusion equation*, arxiv (2020), 2005.13468 [math.AP].
- [11] A.L. Ziff and R.M. Ziff, *Fractal kinetics of COVID-19 pandemic (with update 3/1/20)*, medRxiv preprint (2020), doi: doi.org/10.1101/2020.02.16.20023820
- [12] G.L. Vasconcelos, A.M.S. Macedo, R. Ospina, F.A.G. Almeida, G.C. Duarte-Filho, A.A. Brum and I.C.L. Souza, *Modelling fatality curves of COVID-19 and the effectiveness of intervention strategies*, PeerJ-Journal of Life and Environmental Sciences (2020), in press.
- [13] E.M.F. Curado and M.R. Curado, *A discrete-time-evolution model to forecast progress of Covid-19 outbreak*, medRxiv preprint (2020), doi: 10.1101/2020.06.12.20129981.th
- [14] G.S. Costa, W. Cota and S.C. Ferreira, *Metapopulation modeling of COVID-19 advancing into the countryside: an analysis of mitigation strategies for Brazil*, medRxiv preprint (2020), doi: 10.1101/2020.05.06.20093492
- [15] M.A. Pires, N. Crokidakis, D.O. Cajueiro, M.A. de Menezes and S.M.D. Queiros, *What is the potential for a second peak in the evolution of SARS-CoV-2 in Brazil? Insights from a SIRASD model considering the informal economy*, preprint (2020), 2005.09019 [q-bio.PE].
- [16] C. Tsallis, G. Bemsiki and R.S. Mendes, *Is re-association in folded proteins a case of nonextensivity?*, Phys. Lett. A **257**, 93 (1999).
- [17] R.H. Austin, K. Beeson, L. Eisenstein, H. Frauenfelder, I.C. Gunsalus and V.P. Marshall, *Activation energy spectrum of a biomolecule: Photodissociation of carbonmonoxy myoglobin at low temperatures*, Phys. Rev. Lett. **32**, 403 (1974); R.H. Austin, K.W. Beeson, L. Eisenstein, H. Frauenfelder and I.C. Gunsalus, *Dynamics of ligand binding to myoglobin*, Biochemistry **14**, 5355 (1975).
- [18] D. Brockmann, L. Hufnagel and T. Geisel, *The scaling laws of human travel*, Nature **439**, 26 (2006).

- [19] D. Brockmann, V. David and A. Morales Gallardo, *Human mobility and spatial disease dynamics*, in *Diffusion Fundamentals III*, C. Chmelik, N. Kanellopoulos, J. Kärger, D. Theodorou, Eds. (Leipziger Universitätsverlag, Leipzig, 2009).
- [20] K. Prem et al, *The effect of control strategies to reduce social mixing on outcomes of the COVID-19 epidemic in Wuhan, China: a modelling study*, *Lancet Public Health* **5**, e261-70 (2020).
- [21] Q. Li et al, *Early Transmission Dynamics in Wuhan, China, of Novel Coronavirus-Infected Pneumonia* *New England Journal of Medicine* (2020), doi: 10.1056/NEJMoa2001316
- [22] P. Boldog et al, *Risk assessment of novel Coronavirus COVID-19 outbreaks outside China*, *J. Clin. Med.* **9**, 571 (2020).
- [23] J. Yuan et al, *Monitoring transmissibility and mortality of COVID-19 in Europe*, *Internat. J. Infectious Diseases* **95**, 311-315 (2020).
- [24] H. Wang et al, *Phase-adjusted estimation of the number of Coronavirus disease 2019 cases in Wuhan, China*, *Cell Discovery* **6**, 10 (2020), doi: 10.1038/s41421-020-0148-0
- [25] W.M. Liu, S.A. Levin and Y. Iwasa, *Influence of nonlinear incidence rates upon the behavior of SIRS epidemiological models*, *J. Math. Biol.* **23**, 187 (1986); W.M. Liu, H.W. Hethcote and S.A. Levin, *Dynamical behavior of epidemiological models with nonlinear incidence rates*, *J. Math. Biol.* **25**, 359 (1987).
- [26] <https://www.worldometers.info/coronavirus/#countries>;
<https://data.humdata.org/dataset/novel-coronavirus-2019-ncov-cases>
- [27] M. Muskat, *The Flow of Homogeneous Fluids Through Porous Media* (Springer, New York, 1937).
- [28] A.R. Plastino and A. Plastino, *Non-extensive statistical mechanics and generalized Fokker-Planck equation*, *Physica A* **222**, 347 (1995).
- [29] C. Tsallis and D.J. Bukman, *Anomalous diffusion in the presence of external forces: exact time-dependent solutions and their thermostistical basis*, *Phys. Rev. E* **54**, R2197 (1996).
- [30] G. Combe, V. Richefeu, M. Stasiak and A.P.F. Atman, *Experimental validation of nonextensive scaling law in confined granular media*, *Phys. Rev. Lett.* **115**, 238301 (2015)
- [31] J.S. Andrade Jr., G.F.T. da Silva, A.A. Moreira, F.D. Nobre and E.M.F. Curado, *Thermostatistics of overdamped motion of interacting particles*, *Phys. Rev. Lett.* **105**, 260601 (2010).
- [32] A.A. Moreira, C.M. Vieira, H.A. Carmona, J.S. Andrade, Jr. and C. Tsallis, *Overdamped dynamics of particles with repulsive power-law interactions*, *Phys. Rev. E* **98**, 032138 (2018).
- [33] E.M.F. Curado, A.M.C. Souza, F.D. Nobre and R.F.S. Andrade, *Carnot cycle for interacting particles in the absence of thermal noise*, *Phys. Rev. E* **89**, 022117 (2014).
- [34] R.F.S. Andrade, A.M.C. Souza, E.M.F. Curado and F.D. Nobre, *A thermodynamical formalism describing mechanical interactions*, *EPL* **108**, 20001(2014).
- [35] F.D. Nobre, E.M.F. Curado, A.M.C. Souza and R.F.S. Andrade, *Consistent thermodynamic framework for interacting particles by neglecting thermal noise*, *Phys. Rev. E* **91**, 022135 (2015).
- [36] A.M.C. Souza, R.F.S. Andrade, F.D. Nobre and E.M.F. Curado, *Thermodynamic framework for compact q-Gaussian distributions*, *Physica A* **491**, 153 (2018).
- [37] H.A. Kramers, *Brownian motion in a field of force and the diffusion model of chemical reactions*, *Physics* **7** (4), 284 (1940).
- [38] C. Tsallis, *Possible generalization of Boltzmann-Gibbs statistics*, *J. Stat. Phys.* **52**, 479 (1988); M. Gell-Mann and C. Tsallis, eds., *Nonextensive Entropy - Interdisciplinary Applications*, (Oxford University Press, New York, 2004); C. Tsallis, *Introduction to Nonextensive Statistical Mechanics - Approaching a Complex World* (Springer, New York, 2009).
- [39] E.K. Lenzi, C. Anteneodo and L. Borland, *Escape time in anomalous diffusive media*, *Phys. Rev. E* **63**, 051109 (2001).
- [40] V. Aquilanti, E.P. Borges, N.D. Coutinho, K.C. Mundim and V.H. Carvalho-Silva, *From statistical thermodynamics to molecular kinetics: the change, the chance and the choice*, *Rendiconti Lincei, Scienze Fisiche e Naturali* (2018).
- [41] K.C. Mundim, S. Baraldi, H.G. Machado and F.M.C. Vieira, *Temperature coefficient (Q_{10}) and its applications in biological systems: Beyond the Arrhenius theory*, *Ecological Modelling* **431**, 109127 (2020).
- [42] C. Tsallis, M. Gell-Mann and Y. Sato, *Asymptotically scale-invariant occupancy of phase space makes the entropy S_q extensive*, *Proc. Natl. Acad. Sc. USA* **102**, 15377-15382 (2005).
- [43] J.-P. Gazeau and C. Tsallis, *Moebius transforms, cycles and q-triplets in statistical mechanics*, *Entropy* **21**, 1155 (2019).
- [44] L. Peng, W. Yang, D. Zhang, C. Zhuge and L. Hong, *Epidemic analysis of COVID-19 in China by dynamical modeling*, *medRxiv* (2020), doi: 10.1101/2020.02.16.20023465
- [45] A. Godio, F. Pace and Andrea Vergnano, *SEIR modeling of the Italian epidemic of SARS-CoV-2 using computational swarm intelligence*, *Int. J. Environ. Res. Public Health* **17**, 3535 (2020), doi: 10.3390/ijerph17103535
- [46] L. Lopez and X. Rodo, *A modified SEIR model to predict the COVID-19 outbreak in Spain and Italy: Simulating control scenarios and multi-scale epidemics*, *medRxiv* (2020), doi: 10.1101/2020.03.27.20045005
- [47] E. Cheynet, *Generalized SEIR epidemic model (fitting and computation)*, <https://www.mathworks.com/matlabcentral/fileexchange/74545-generalized-seir-epidemic-model-fitting-and-computation>

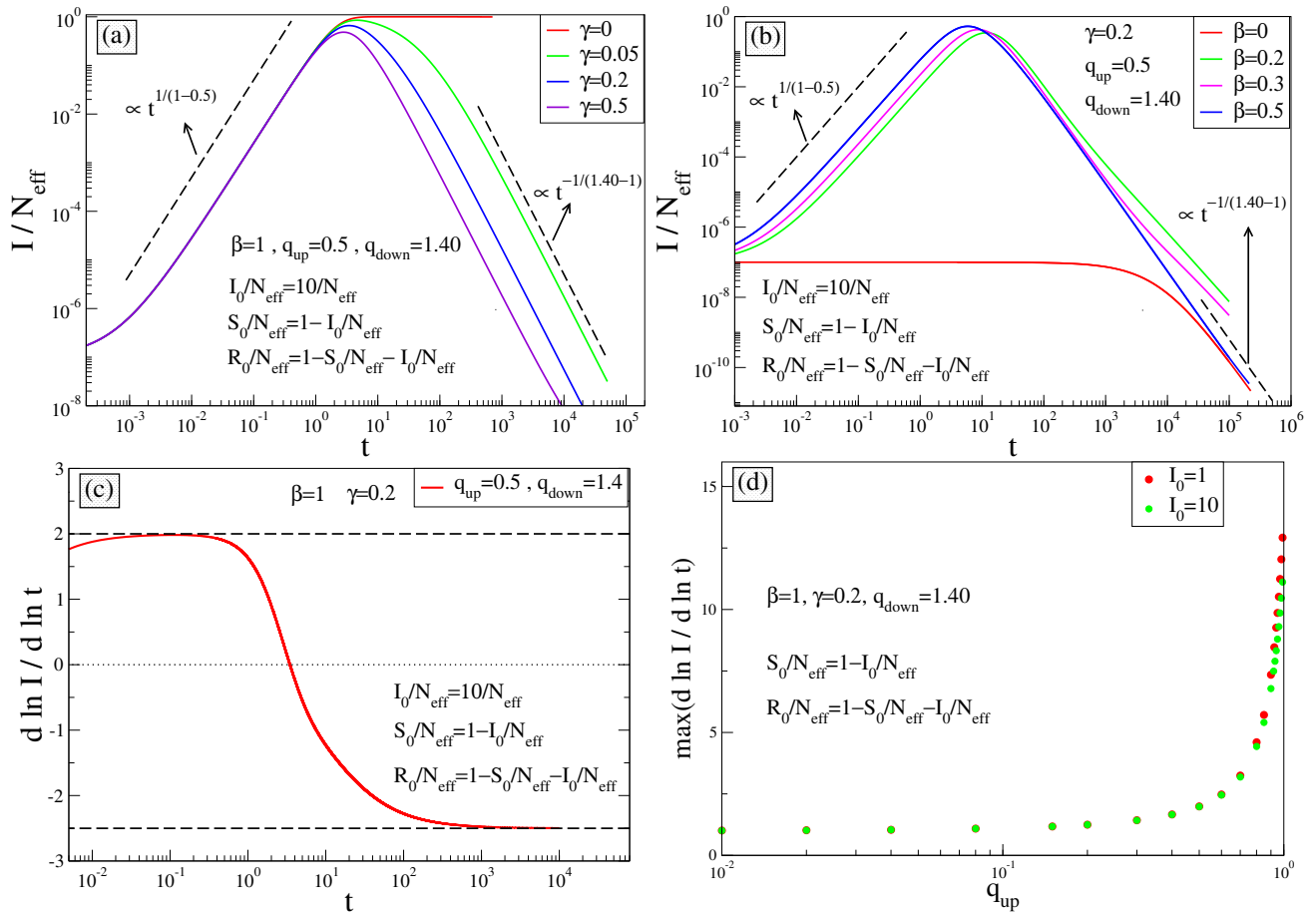


FIG. 1: Time evolution of $I(t)$ for the q -SIR equations with $N_{\text{eff}} = 10^8$; we consider t to run virtually from zero to infinity (not necessarily during only the typical range of real epidemics, say 1000 days). (a) Fixed β and various values of γ . For $\gamma = 0$ and $\forall \beta$, $I(t)/N_{\text{eff}}$ precisely recovers the expression given in Eq. (6). The slope at the first *inflexion point* for increasing time is given by $\max[d \ln I / d \ln t] = 1/(1 - q_{\text{up}})$, $\forall \gamma$. (b) Fixed γ and various values of β . For $\beta = 0$, the q_{down} -exponential function is precisely recovered. (c) Time dependence of the slope of $[d \ln(I/N_{\text{eff}})/d \ln t]$, which appears to be bounded between $1/(1 - q_{\text{up}})$ ($= 2$ in this example) and $-1/(q_{\text{down}} - 1)$ ($= -2.5$ in this example) (dashed lines). The dotted line corresponds to the position of the peak of $I(t)$, and the maximum (minimum) corresponds to the left (right) inflexion point. (d) The maximal slope of $I(t)/N_{\text{eff}}$ as a function of q_{up} . The high value at $q_{\text{up}} = 1$ reflects the divergence expected in the limit $q_{\text{up}} = q_{\text{down}} = 1$. Indeed, in this limit, the present q -SIR model recovers the standard SIR model, which increases exponentially (and not as a power-law) towards the corresponding peak. Notice also that this slope decreases when I_0/N_{eff} increases.

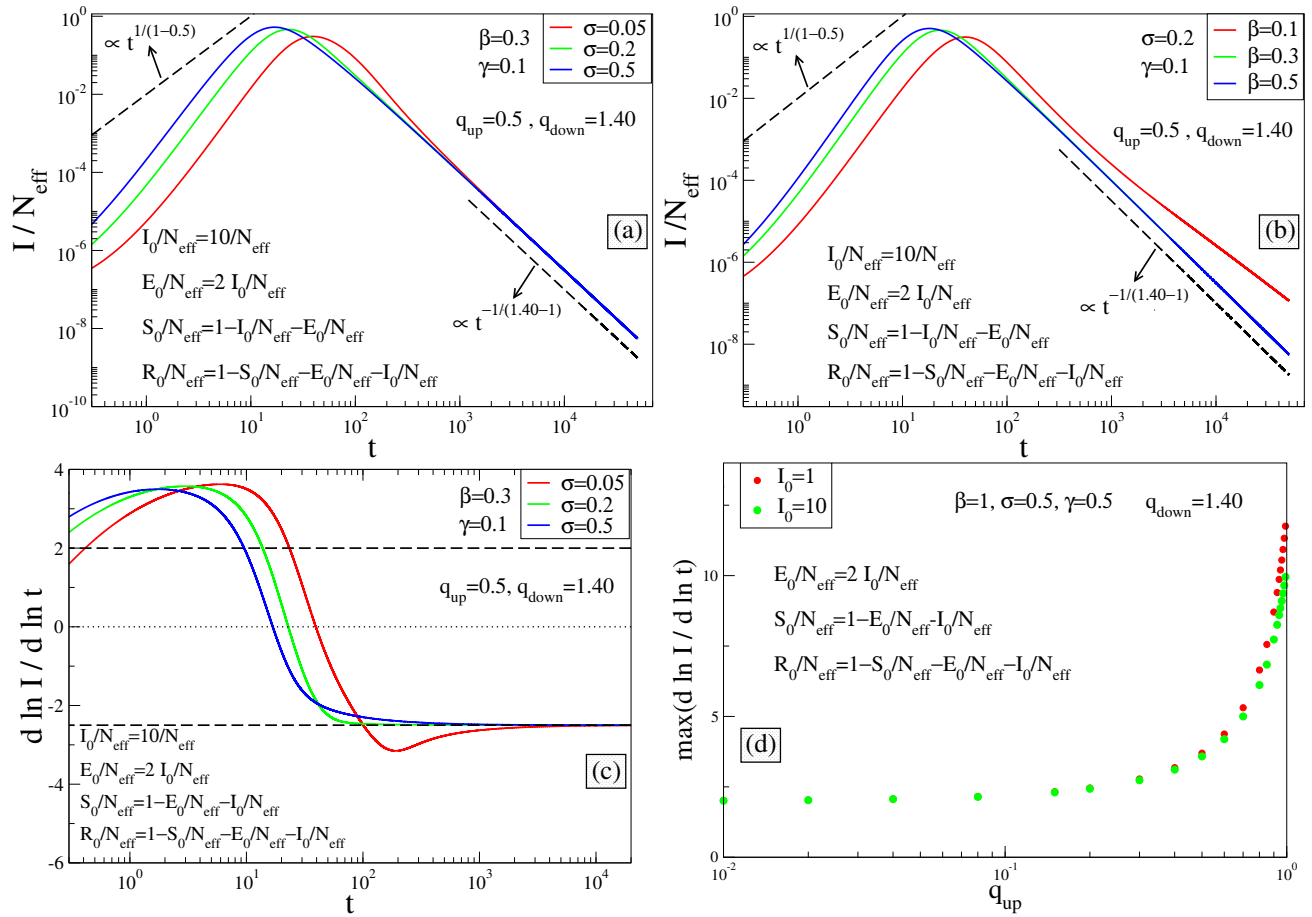


FIG. 2: Time evolution of $I(t)$ for the q -SEIR equations with $N_{eff} = 10^8$; we consider t to run virtually from zero to infinity (not necessarily during only the typical range of real epidemics, say 1000 days). (a) Fixed (β, γ) and various values of σ . (b) Fixed (σ, γ) and various values of β . (c) Time dependence of the slope of $[d \ln I / d \ln t]$, which, in contrast with the q -SIR equations, is *not* bounded between $1/(1 - q_{up}) > 0$ and $-1/(q_{down} - 1) < 0$ (dashed lines). The dotted line corresponds to the position of the peak of $I(t)$, and the maximum (minimum) corresponds to left (right) inflexion points. (d) The maximal slope of $I(t)/N_{eff}$ as a function of q_{up} . The high value at $q_{up} = 1$ reflects the divergence expected in the limit $q_{up} = q_{down} = 1$. Indeed, in this limit, the present q -SEIR model recovers the standard SEIR model, which increases exponentially (and not as a power-law) towards the corresponding peak. Notice also that this slope decreases when I_0/N_{eff} increases.

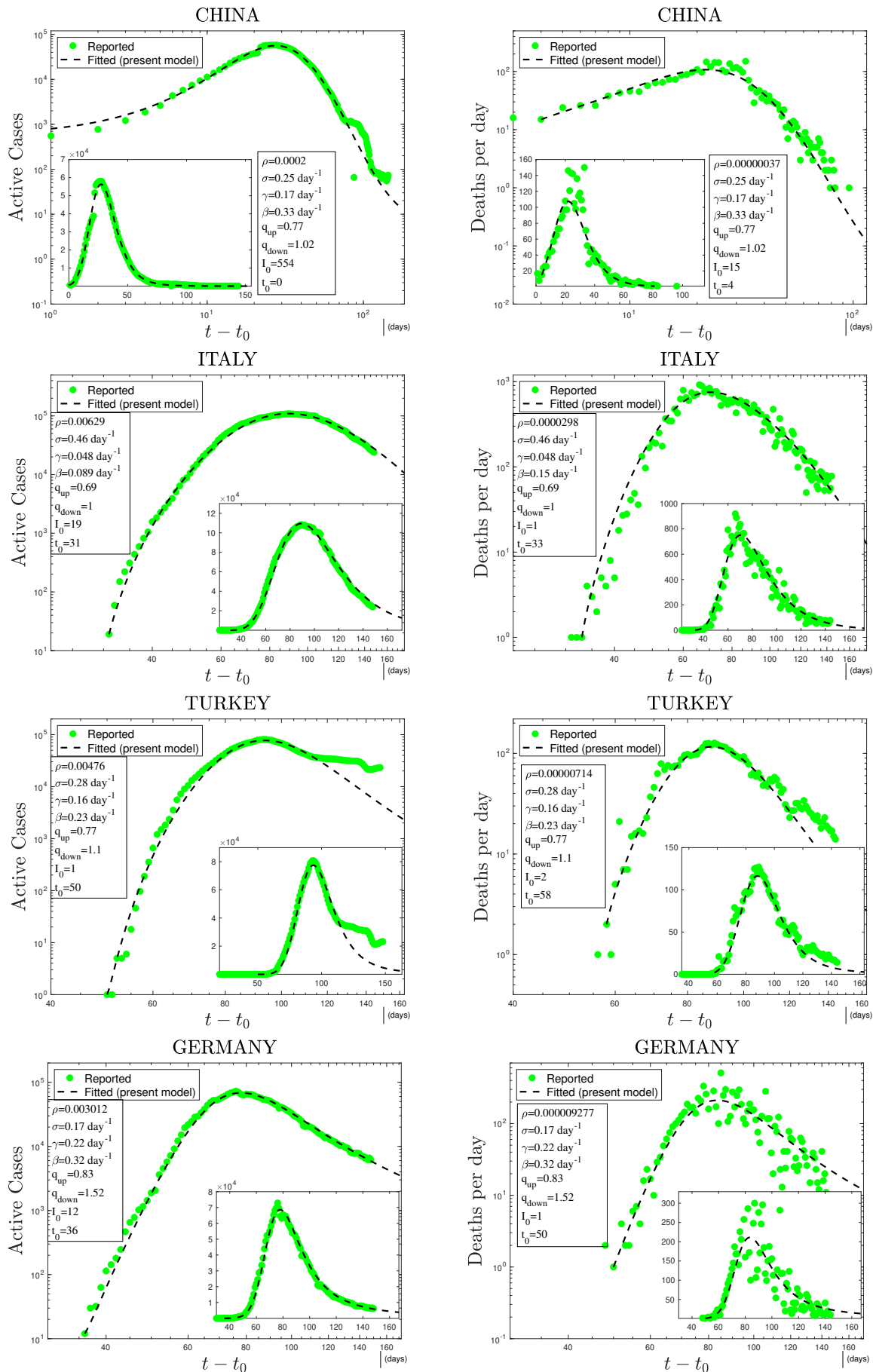


FIG. 3: Time evolution of available data for COVID-19 numbers of active cases (probably under-reported in most cases) and deaths per day [26] and their (linear scale) Least Squares Method fittings with $N_{eff} I(t)$ from the q -SEIR model; $\rho = N_{eff}/N$ where N is the population of the country. Notice that (i) By convention, $t_0 = 0$ for China; (ii) Parameters such as ρN are particularly relevant for sanitary-epidemiological decisions, and, as it is natural, $\rho(\text{deaths}) \ll \rho(\text{active})$ for any given country; (iii) For any given country, the values of (q_{up}, q_{down}) are the same for both curves of active cases and of deaths; (iv) The dates of the peaks of the active cases and deaths per day do not necessarily coincide; (v) The values that emerge for β/γ (reproduction number or growth rate), $1/\beta$ (exposition time), $1/\gamma$ (recovering time), and $1/\sigma$ (incubation time) are consistent with those currently indicated in the literature [20–24]; (vi) We considered all the data reported until June 13th, excluding some very initial transients or sudden anomalous discrepancies (e.g., in China, Turkey and Brazil).

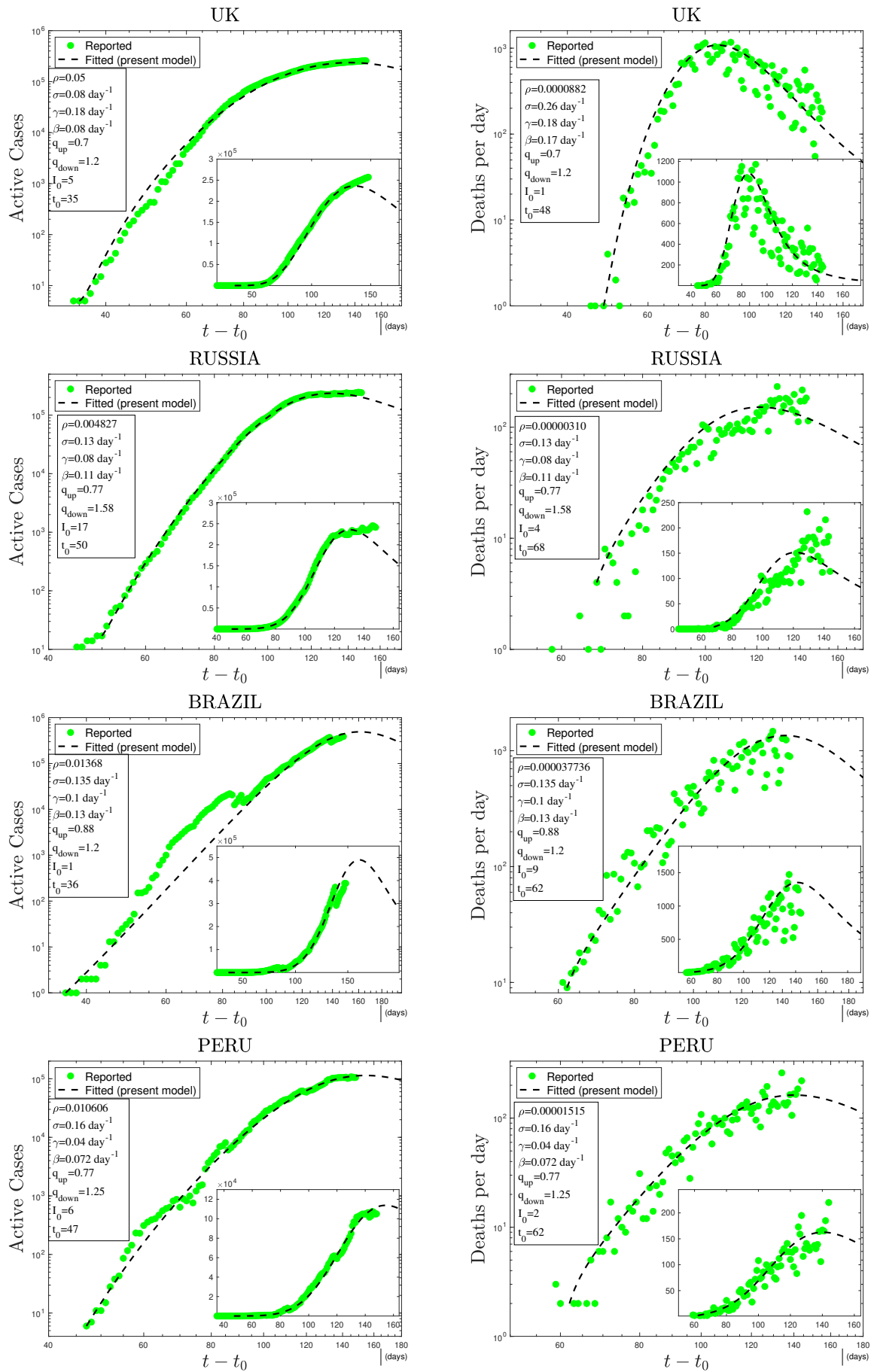


FIG. 4: Continuation of figure.3

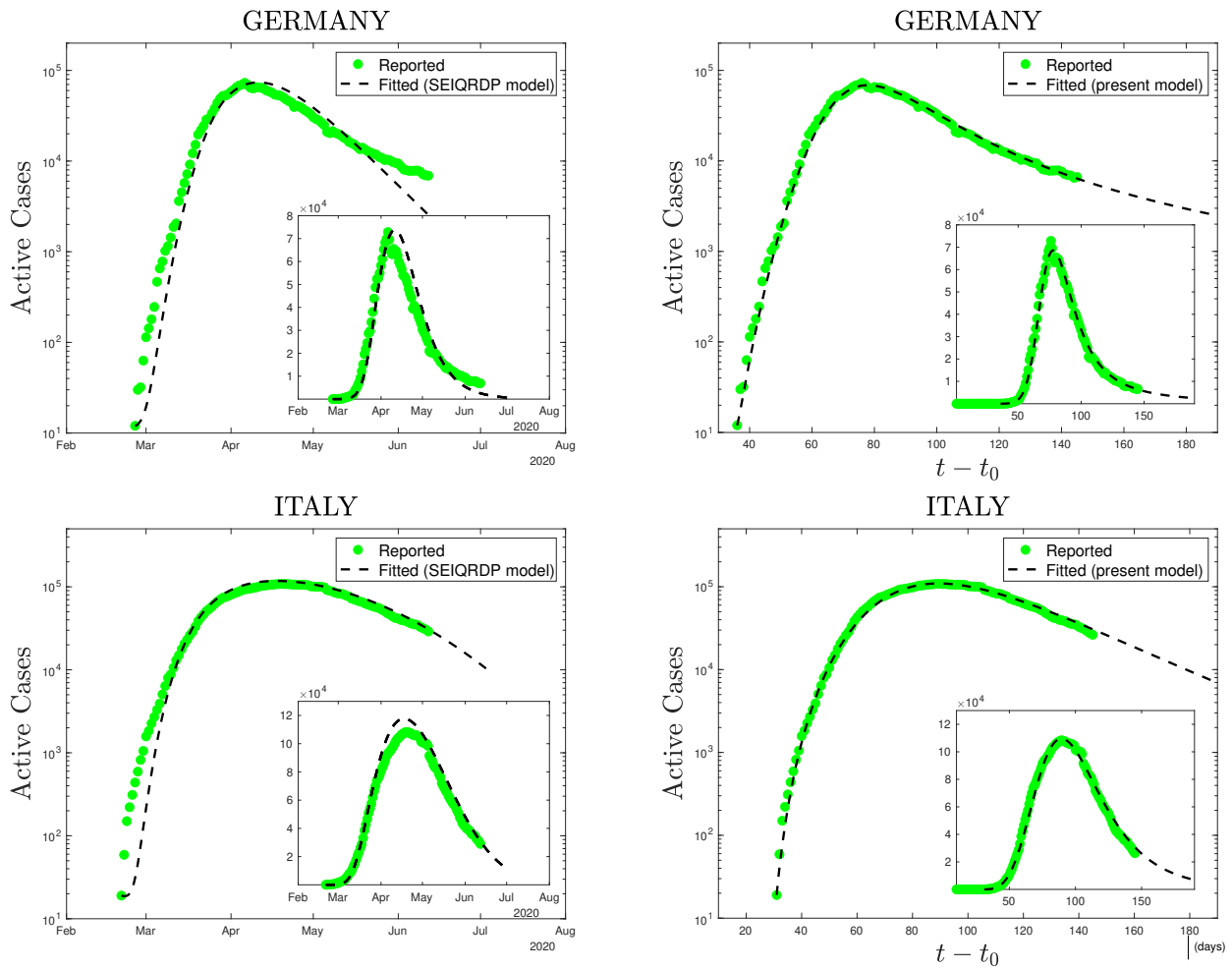


FIG. 5: Comparison, using precisely the same reported data (green dots), of the SEIQRDP model (left plots) and the q -SEIR model (right plots) for the time series of Germany (from February 26th to June 13th 2020) and of Italy (from February 21st to June 13th 2020). To obtain the SEIQRDP fittings (seven linear/bilinear equations satisfying $S + E + I + Q + R + D + P = N$ and including several fixed as well as two time-dependent coefficients) we have used the online program [47]. To obtain the q -SEIR fittings (four not necessarily linear/bilinear equations satisfying $S + E + I + R = N_{eff}$ and including only fixed parameters, two of them being the nonlinear exponents q_{up} and q_{down}) we have used a standard Least Squares Method (linear scales).