

1 **Circulating CD34<sup>+</sup> Progenitor Cells are Predictive of All-Cause and**  
2 **Cardiovascular Mortality and are Influenced by Physical Activity.**

3

4 David Muggeridge<sup>a</sup>, Jennifer Dodd<sup>b</sup>, Mark D. Ross<sup>b</sup>

5

6 <sup>a</sup>Institute of Health Research & Innovation, Division of Biomedical Science,

7 University of the Highlands and Islands, Inverness, UK

8 <sup>b</sup>School of Applied Sciences, Edinburgh Napier University, Edinburgh, United

9 Kingdom

10

11 **Running Title:** Circulating progenitor cells predict mortality and are influenced by  
12 physical activity

13

14 **Corresponding Author:**

15 Dr. Mark Ross

16 Edinburgh Napier University

17 School of Applied Sciences

18 Sighthill Campus

19 2.B.38

20 EH11 4BN

21 [M.Ross@napier.ac.uk](mailto:M.Ross@napier.ac.uk)

22 0131 455 2487

23 Twitter: @mross013

24

25

26 **Abstract**

27

28 *Background:* Circulating progenitor cells (CPCs) play an important role in vascular  
29 repair and may influence cardiovascular (CV) health and longevity. Exercise is  
30 known to modulate these cells via mobilization from the bone marrow. The primary  
31 aims of this study were to evaluate the association of CPCs with mortality and explore  
32 the association between physical activity (PA) and CPCs.

33

34 *Design:* We studied 1,751 individuals from the Framingham Offspring cohort ( $66 \pm 9$   
35 years [40-92 years], 54% female). CPCs ( $CD34^+$ ,  $CD34^+CD133^+$ ,  
36  $CD34^+CD133^+KDR^+$ ) were measured in participants using flow cytometry.

37 Multivariable cox regression analyses were performed to investigate relationship of  
38 CPCs with future CV event, CV mortality and all-cause mortality. Multivariate  
39 regression analyses were performed to determine the relationship between self-  
40 reported PA and CPC counts.

41

42 *Results:* Following adjustment for standard risk factors, there was an inverse  
43 association between  $CD34^+$  CPCs and all-cause mortality (hazard ratio (HR) per unit  
44 increase in  $CD34^+$ , 0.79; 95% CI 0.64 – 0.98,  $P=0.036$ ).  $CD34^+CD133^+$  CPCs were  
45 inversely associated with CV mortality (HR 0.63, 95% CI 0.44 – 0.91,  $P=0.013$ ).

46 Associations of  $CD34^+$  and  $CD34^+CD133^+$  with mortality were strongest in  
47 participants with pre-existing CVD. PA was associated with  $CD34^+$  CPCs only in  
48 CVD participants. This relationship was maintained after adjustment for confounding  
49 variables.

50

51 *Conclusions:* Higher number of CD34<sup>+</sup> and CD34<sup>+</sup> CD133<sup>+</sup> CPCs were inversely  
52 associated with all-cause and CV mortality. These associations were strongest in  
53 participants already diagnosed with CVD. PA is independently associated with CD34<sup>+</sup>  
54 CPCs in individuals with CVD only, suggestive of greater benefit for this population  
55 group.

56

57

58 **Abstract Word Count:** 249

59

60 **Key Words:** Stem Cells, Mortality, Cardiovascular Diseases, Exercise

## 61 **Introduction**

62

63 Circulating progenitor cells (CPC) are a heterogenous group of cells which have  
64 tissue regenerative potential. A number of studies have shown that CD34<sup>+</sup> CPCs and  
65 several subsets of CD34<sup>+</sup> cells (such as CD34<sup>+</sup>CD133<sup>+</sup>/KDR<sup>+</sup>) can participate in  
66 vascular repair and growth<sup>1,2</sup>, and may be associated with vascular endothelial  
67 function<sup>3</sup>. Therefore these cells may reflect vascular integrity and have been used as  
68 vascular biomarkers of repair<sup>4</sup>.

69

70 Low number of these CPCs are associated with vascular dysfunction<sup>3,5</sup> and  
71 subsequent greater cardiovascular (CV) risk<sup>6</sup>. Observational studies have shown that  
72 individuals with cardiovascular disease (CVD) exhibit lower number and angiogenic  
73 function of these CPCs<sup>7</sup>, reflecting reduced vascular repair capacity. Studies have  
74 demonstrated that in individuals hospitalized with heart failure<sup>8</sup>, or with acute  
75 coronary syndromes<sup>9</sup>, low number of CD34<sup>+</sup> CPCs predict earlier mortality in these  
76 patients compared to patients with high numbers of CD34<sup>+</sup> CPCs, which suggests  
77 impaired vascular repair capacity in those with higher mortality risk. Whilst there are  
78 no studies that have investigated the role of CD34<sup>+</sup> CPCs and associated subsets in  
79 predicting clinical endpoints in a heterogenous human population, there is evidence to  
80 suggest that these CPCs are reflective of subclinical atherosclerotic risk in an  
81 apparently healthy population<sup>7</sup>.

82

83 Lifestyle behaviors can significantly affect CV health. Smoking, physical inactivity  
84 and obesity are associated with perturbed vascular health, leading to greater risk of  
85 mortality. Physical activity, known for its effect on improving vascular function<sup>10</sup>

86 may do so in part via modulating CPC content and/or function. Studies investigating  
87 acute<sup>11</sup> and chronic exercise training<sup>12</sup> have demonstrated that progenitor cells can  
88 be mobilized into peripheral blood compartment in humans, where they can exert  
89 their vasoreparative functions. However, the efficacy of exercise training to promote  
90 progenitor cell number has been argued, with recent evidence demonstrating little or  
91 no change in CPC number in humans after exercise training<sup>4</sup>. As yet, there is no  
92 evidence from large cohorts investigating the association between physical activity  
93 and CPCs.

94

95 The primary aim of this study was to investigate the prognostic potential of CD34<sup>+</sup>  
96 CPCs on all-cause and CV mortality. Furthermore, we investigated the relationship  
97 between self-reported physical activity on CPCs in a large cohort. We hypothesized  
98 that circulating CD34<sup>+</sup> CPCs and subpopulations would predict mortality, and that  
99 these cells are associated with self-reported physical activity levels.

100

## 101 **Methods**

102

### 103 **Study Sample**

104

105 The Framingham Heart Study (FHS) is a longitudinal community-based cohort set up  
106 in 1948 under the direction of the National Heart, Lung, and Blood Institute (NHLBI)  
107 aimed to determine factors that contribute to the onset and progression of  
108 cardiovascular disease (CVD)<sup>13</sup>. Subsequently, an Offspring cohort was included  
109 from 1971<sup>14</sup>. Participants (n=3,002) in the Framingham Offspring cohort who  
110 attended the 8<sup>th</sup> examination cycle (2004-2008) were eligible for our investigation,

111 with n=1,751 included in the study due to availability of key data. Participant  
112 characteristics are shown in **Table 1**.

113

114 This study complies with the Declaration of Helsinki. Ethical approval for all data  
115 collection and research purposes was granted by Boston University Medical Centre,  
116 and consent was obtained for the collection and use of the data available for  
117 secondary investigators. Edinburgh Napier University Research Ethics and Integrity  
118 Committee approved of the use of the secondary dataset for the purposes of the study.

119

## 120 **Clinical Assessment**

121

122 All participants underwent a clinical and risk factor assessment including assessment  
123 of blood pressure, height and body mass. Fasting blood samples were drawn for  
124 quantification of glucose, glycated hemoglobin (HbA1c), total cholesterol, and high  
125 density lipoprotein cholesterol (HDL-C), and triglycerides.

126

## 127 **Quantification of Circulating Progenitor Cells**

128

129 Blood samples were collected from participants in the fasted state to quantify CPC  
130 counts. Blood samples were centrifuged and the peripheral blood mononuclear cells  
131 (PBMCs) were isolated for cell phenotyping as previously described<sup>15</sup>. PBMCs were  
132 stained with anti-CD34 FITC, anti-CD133 APC and anti-KDR-PE antibodies (all BD  
133 Biosciences). CD34<sup>+</sup> cells were gated for subsequent expression of CD133 and finally  
134 KDR. Total progenitor cells are defined as CD34<sup>+</sup> cells, and EPCs are defined as  
135 CD34<sup>+</sup>CD133<sup>+</sup> and CD34<sup>+</sup>CD133<sup>+</sup>KDR<sup>+</sup> cells. Analysis of flow cytometry files were

136 performed using FlowJo analysis software (Treestar, Inc.) and reviewed by  
137 investigators blinded to the identity of the participants.

138

### 139 **Endothelial Cell Colony Forming Cells (ECFC)**

140

141 In 1653 participants, PBMCs were also used to assess endothelial cell colony forming  
142 cells (ECFC). PBMCs were cultured on fibronectin-coated tissue culture plates (BD  
143 Biosciences) and cultured for 7 days. After 7 days of culture, the number of colonies  
144 in each well were counted by a single blinded individual. ECFC number was reported  
145 as average number of colonies per well up to 12 wells.

146

### 147 **Mortality and Event Incidence**

148

149 Follow up was conducted for primary end points of all-cause and cardiovascular  
150 death. Cause of death was determined through medical history, review of medical  
151 records, death certificate, interview of next of kin, and review of the National Death  
152 Index. Cardiovascular death was defined as death attributed to ischemic cause (fatal  
153 myocardial infarction, stroke). Cardiovascular event risk was only assessed in  
154 individuals with no pre-existing CVD or CV event occurring before exam 8 (n =  
155 1467). CV event or incident CVD was assessed using the standard Framingham Heart  
156 Study criteria and included the following: new-onset angina, fatal and non-fatal MI or  
157 stroke, heart failure or intermittent claudication.

158

### 159 **Self-Reported Physical Activity Levels**

160

161 Self-report sleep, sitting time, slight, moderate and heavy activity were determined  
162 using a physical activity questionnaire employed by the Framingham Heart Study.  
163 The numbers of hours of certain activity per week were collected. A composite score  
164 was calculated (physical activity index; PAI), for each participant by weighting a 24hr  
165 activity recall. Participants were asked to report the number of hours in a typical day  
166 spent sleeping (weighting factor [WF] = 1) and in sedentary (WF = 1.1), slight  
167 (WF = 1.5), moderate (WF = 2.4), and heavy activities (WF = 5)<sup>16</sup>. PAI was  
168 subsequently calculated by adding the products of the hours spent at each activity  
169 domain and their weighting factor based on the oxygen requirements for said activity  
170<sup>17</sup>.

171

## 172 **Statistical Analysis**

173

174 Continuous variables were assessed for normality by assessing histograms and Q-Q  
175 plots. Data for CD34<sup>+</sup>, CD34<sup>+</sup>CD133<sup>+</sup>KDR<sup>+</sup>, CD34<sup>+</sup>CD133<sup>+</sup> and PAI were natural  
176 log transformed and EFCFs square root. Appropriate data transformations were  
177 applied where relevant prior to further analysis. All participants were categorized into  
178 tertiles for each CPC measure for event and mortality risk analyses using Kaplan-  
179 Meier curve and log-rank analyses. Subsequent Cox proportional hazards regression  
180 analyses were performed, utilizing transformed continuous data for CPC's. Cox  
181 proportional hazards regressions were performed unadjusted and adjusted for age,  
182 sex, BMI, PAI, CVD and diabetes status, smoking status. To investigate the effects of  
183 CVD status, the data set was split and analyses repeated for those free of CVD at  
184 exam 8 (n = 1467) and those with a CVD diagnosis prior to exam 8 (n = 284).



185 Proportional hazards assumptions for each of the Cox models were evaluated by plots  
186 of Schoenfeld residuals.

187

188 To assess the influence of physical activity on CPC counts, linear regression analyses  
189 were performed to assess the relationship between CPC counts and PAI. A subset of  
190 physical activity, moderate + heavy activity time, was also investigated. Unadjusted  
191 and adjusted analyses are displayed. Data analyses were carried out using RStudio  
192 Team (2019, RStudio: Integrated Development for R. RStudio, Inc, Boston, MA:  
193 <http://www.rstudio.com/>). *P*-values of <0.05 were considered statistically significant.

194

## 195 **Results**

196

### 197 **Relationship between CPC Counts and Adverse Events**

198

#### 199 *All-Cause Mortality*

200 Kaplan Meier curves based on tertiles of CPC counts and all-cause mortality are  
201 shown in **Figure 1 A-D**. In unadjusted Cox proportional hazard models, increases in  
202 CD34<sup>+</sup> and CD34<sup>+</sup>CD133<sup>+</sup> CPCs were significantly associated with a decrease risk of  
203 death (*P* <0.001, *P* =0.001; **Table 2**). Following adjustment, increases in CD34<sup>+</sup>  
204 remained significantly associated with a decrease risk of death (*P* = 0.036). Whilst  
205 there was a trend for CD34<sup>+</sup>CD133<sup>+</sup> on all-cause mortality this did not reach  
206 statistical significance (*P* = 0.07). No significant associations were observed for all-  
207 cause mortality for CD34<sup>+</sup>CD133<sup>+</sup>KDR<sup>+</sup> EPCs or ECFC (all *P* > 0.05; **Table 2**).

208

#### 209 *Cardiovascular Mortality*

210 Kaplan Meier curves based on tertiles of CPC counts and cardiovascular mortality are  
211 shown in **Figure 1 E-H**. In unadjusted Cox proportional hazard models, increases in  
212 CD34<sup>+</sup> and CD34<sup>+</sup>CD133<sup>+</sup> CPCs were significantly associated with a decrease risk of  
213 cardiovascular death ( $P = 0.008$ ,  $P = 0.006$ ; **Table 2**). Following adjustment,  
214 CD34<sup>+</sup>CD133<sup>+</sup> CPCs were significantly associated with a decrease risk of  
215 cardiovascular death ( $P = 0.013$ ). Whilst there was a trend for CD34<sup>+</sup> on CVD  
216 mortality this did not reach statistical significance ( $P = 0.055$ ). No other significant  
217 associations were observed for CVD mortality (all  $P > 0.05$ ; **Table 2**).

218

### 219 **Relationship between CPC Counts and Adverse Events- Influence of CVD Status**

220

#### 221 *All-Cause Mortality*

222 Kaplan Meier curves based on tertiles of CPC counts and all-cause mortality for those  
223 free of CVD and those with CVD at exam 8 are shown in **Supplementary Figure 1**.  
224 Unadjusted and adjusted Cox proportional hazard models for CPC counts are  
225 displayed in **Table 3**. Following adjustment, increases in CD34<sup>+</sup> and CD34<sup>+</sup>CD133<sup>+</sup>  
226 CPCs were significantly associated with a decrease risk of death in those with CVD at  
227 exam 8 ( $P = 0.032$ ,  $P = 0.003$ ). No other significant associations were observed for  
228 all-cause mortality (all  $P > 0.05$ ; **Table 3**).

229

#### 230 *Cardiovascular Mortality*

231 Kaplan Meier curves based on tertiles of CPC counts and CV mortality for those free  
232 of CVD and those with CVD at exam 8 are shown in **Supplementary Figure 1**.  
233 Unadjusted and adjusted Cox proportional hazard models for CPC counts and CV  
234 mortality are displayed in **Table 3**. In unadjusted and adjusted Cox proportional

235 hazard models, increases in CD34<sup>+</sup> and CD34<sup>+</sup>CD133<sup>+</sup> CPCs were significantly  
236 associated with a decrease risk of CV mortality in the CVD present at exam 8 group  
237 (all  $P < 0.05$ , **Table 3**). No other significant associations were observed for CV  
238 mortality in either of the sub-groups (all  $P > 0.05$ ).

239

#### 240 *Cardiovascular Events*

241 Cox proportional hazard analysis was performed in the population free of CVD for  
242 incidence of future CV events. ECFCs were significantly associated with a decrease  
243 risk of future CV events ( $P = 0.046$ , **Supplementary Table 1**). There was no  
244 association between CPC counts and CV event risk for all other measures (all  $P >$   
245  $0.05$ ).

246

#### 247 **Association of Physical Activity with CPC Counts**

248

249 To assess the association between physical activity and CPC counts, both unadjusted  
250 and adjusted linear regressions were performed. In unadjusted and adjusted analyses,  
251 PAI and moderate + heavy activity hours were not associated with any CPC subset or  
252 with ECFC units. However, in the CVD group, after adjusting for confounders, both  
253 PAI and moderate + heavy activity time were positively associated with CD34<sup>+</sup> CPCs,  
254 and were the only significant predictors of the number of these cells (**Table 4** and  
255 **Supplementary Table 2**). Physical activity was not associated with CD34<sup>+</sup>CD133<sup>+</sup>,  
256 CD34<sup>+</sup>CD133<sup>+</sup>KDR<sup>+</sup> CPCs or ECFC counts, both in univariate and multivariate  
257 analyses.

258

259

260 **Discussion**

261

262 Our main findings were that CD34<sup>+</sup> and CD34<sup>+</sup>CD133<sup>+</sup> CPCs were significant  
263 predictors of all-cause and CV mortality in the Framingham Offspring cohort, driven  
264 primarily by the strength of this association in individuals with CVD. Additionally,  
265 increases in self-reported physical activity is positively associated with higher CD34<sup>+</sup>  
266 CPCs in our CVD cohort after adjustment for confounders, a relationship not evident  
267 in our CVD free cohort. Together these findings suggest that the observed protection  
268 of increased CD34<sup>+</sup> CPCs on mortality in a diseased population is partly driven by the  
269 physical activity levels of individuals.

270

271 Several small studies have investigated the prognostic potential of CPCs for  
272 predicting incident risk of all-cause and/or CV death. These studies have  
273 demonstrated that these cells can predict mortality or clinical end-points in several  
274 disease populations, for example patients with coronary artery disease <sup>18</sup>, acute  
275 coronary syndromes <sup>9</sup>, heart failure <sup>8</sup>, or type 2 diabetes <sup>19</sup>. Our data support these  
276 observations, with CD34<sup>+</sup> and CD34<sup>+</sup>CD133<sup>+</sup> CPCs predictive of all-cause and CV  
277 mortality. Interestingly, this association was absent in the CVD-free population, and  
278 driven mainly by a strong association with mortality in individuals with pre-diagnosed  
279 CVD, suggestive that the prognostic potential of these cells is much stronger in  
280 disease populations, and offers little predictive potential, if any, in apparently healthy  
281 populations. Interestingly, CD34<sup>+</sup>CD133<sup>+</sup>KDR putative EPCs showed no predictive  
282 ability for all-cause or CV death in our study.

283

284 In the largest study investigating the role of CPCs on incident risk prediction in a  
285 CVD cohort, Patel and colleagues<sup>18</sup> observed that, like our study, only CD34<sup>+</sup> and  
286 CD34<sup>+</sup>CD133<sup>+</sup> CPCs were predictive of mortality. In 2 cohorts, each over 400  
287 patients (n=905 pooled), Patel et al<sup>18</sup> showed that increases in both these progenitor  
288 subsets showed significant inverse association with all-cause and CV-mortality, and  
289 that CD34<sup>+</sup>CD133<sup>+</sup>KDR<sup>+</sup> cells, like our data, showed no association with mortality .  
290 Our data in >1700 individuals, however, specifically shows that the associations of  
291 CD34<sup>+</sup> and CD34<sup>+</sup>CD133<sup>+</sup> with all-cause and CV mortality are driven by their  
292 prognostic strength in individuals with CVD, and not those who are CVD-free. It is  
293 likely that these cells play a more important role in cardiovascular health when the  
294 vascular system is in a state of constant damage, and that lower number of these cells  
295 in these patients reflect exhaustion of the progenitor cell pool.

296

297 Both CD34<sup>+</sup> and CD133<sup>+</sup> progenitor cells have vascular regenerative capabilities<sup>20</sup>.  
298 These cells, reported initially to have pro-angiogenic capabilities due to the potential  
299 to differentiate into endothelial cells<sup>1</sup>, most probably work in a paracrine manner,  
300 through secretion of vasoactive and proangiogenic factors, such as VEGF and other  
301 pro-angiogenic cytokines<sup>21</sup>. Due to their potential vasculo-reparative capacities,  
302 clinical studies have been undertaken to assess their efficacy as cellular therapies to  
303 promote recovery of blood flow in myocardial infarction and stroke studies. Clinical  
304 studies showing implantation or injection of these cell types show promise in repair of  
305 damaged myocardium in animal models<sup>2</sup> and in some human studies<sup>22, 23</sup>, however  
306 due to the expense and research and development required to optimize this cellular  
307 therapy, other non-pharmaceutical interventions may be more effective in promoting  
308 endogenous vascular repair for clinical benefit. In addition given the reduced number

309 and function of these cells in CVD<sup>5</sup>, and the predictive association with mortality, it  
310 is pertinent to find therapies to augment production, mobilization and function of  
311 these cells. Exercise and physical activity has the potential to mobilize these cells into  
312 the circulation as evident from acute exercise studies showing transient increases in  
313 CPCs in both healthy<sup>11,24</sup> and diseased populations<sup>25</sup>, although the response to acute  
314 exercise is somewhat diminished in CVD patients<sup>26</sup>. Long-term physical exercise and  
315 physical activity shows promise in increasing number and/or function of these CPCs  
316<sup>27</sup>, potentially through promoting bone marrow production of progenitor cell subsets  
317 (although the origin of EPCs has been a topic of debate recently<sup>28</sup>) or via reducing  
318 inflammatory or pro-apoptotic stimuli in the circulation<sup>29</sup>, thus enhancing survival of  
319 these cells in our body. Our data support the use of physical activity to promote or  
320 maintain CD34<sup>+</sup> CPC number in humans. High levels of self-reported physical  
321 activity was associated with reduce risk of all-cause and CV mortality (data not  
322 shown), and interestingly was associated with higher number of CD34<sup>+</sup> and  
323 CD34<sup>+</sup>CD133<sup>+</sup> CPCs which were also associated with mortality, but only in  
324 individuals with CVD, and not in our CVD-free group.

325

326 Together these findings suggest that the observed protection of increased CD34<sup>+</sup>  
327 CPCs on mortality in a diseased population is partly driven by the physical activity  
328 levels of individuals. These findings maybe clinically relevant as it is supportive of  
329 exercise-based cardiac rehabilitation and suggests an area for future interventions.

330 Whilst both acute aerobic<sup>24</sup> and resistance exercise<sup>11</sup> can promote progenitor cell  
331 release and improve pro-angiogenic function, long-term resistance exercise training  
332 studies are lacking and thus warranted, specifically in a CVD cohort.

333

334 **Conclusion**

335 Our study demonstrated that CD34<sup>+</sup> and CD34<sup>+</sup>CD133<sup>+</sup> CPCs are predictive of  
336 mortality in a large cohort, but with more prognostic potential in individuals with  
337 CVD. Additionally, physical activity was associated with significantly greater CD34<sup>+</sup>  
338 CPCs in a CVD population, with no relationship in non-CVD population. Exercise  
339 and physical activity may promote vascular health and longevity in CVD patients via  
340 promoting CD34<sup>+</sup> CPC number.

341

342 **Acknowledgements:**

343 This manuscript was prepared manuscript was prepared using FRAMOFFSPRING  
344 Research Materials obtained from the NHLBI Biologic Specimen and Data  
345 Repository Information Coordinating Center and does not necessarily reflect the  
346 opinions or views of the FRAMCOHORT, FRAMOFFSPRING or the NHLBI.

347

348 **Funding:**

349 the author(s) disclosed receipt of the following financial support for the research,  
350 authorship, and/or publication of this article: This work was supported by Edinburgh  
351 Napier University's Research Excellence Grant (M.R). D.M. is supported by the  
352 European Union's INTERREG VA Programme, managed by the Special EU  
353 Programmes Body (SEUPB).

354

355 **Conflict of Interest:**

356 The Author(s) declare(s) that there is no conflict of interest.

357

358 **Authors Contributions:**

359 M.R conceived and designed the research. D.M, M.R and J.D undertook statistical  
360 analysis of the data. M.R and D.M interpreted results of the experiments, prepared  
361 figures and drafted the manuscript; all authors edited and revised the manuscript; all  
362 authors approved the final version of the manuscript.

363

#### 364 **Data Availability Statement:**

365 The data underlying this article were provided by the National Heart, Lung and Blood  
366 Institute (NHLBI) under license / by permission. Data will be shared on request to the  
367 corresponding author with permission of the NHLBI.

368

369

#### **References**

370

371 1. Asahara T, Murohara T, Sullivan A, et al. Isolation of putative progenitor  
372 endothelial cells for angiogenesis. *Science* 1997; 275: 964-967. DOI:  
373 10.1126/science.275.5302.964.

374 2. Ananthaseshan S, Grudzinska MK, Bojakowski K, et al. Locally Transplanted  
375 CD34+ Bone Marrow-Derived Cells Contribute to Vascular Healing After Vascular  
376 Injury. *Transplant Proc* 2017; 49: 1467-1476. DOI:  
377 10.1016/j.transproceed.2017.01.081.

378 3. Bruyndonckx L, Hoymans VY, Frederix G, et al. Endothelial progenitor cells  
379 and endothelial microparticles are independent predictors of endothelial function. *J*  
380 *Pediatr* 2014; 165: 300-305. DOI: 10.1016/j.jpeds.2014.04.015.

381 4. Van Craenenbroeck EM, Frederix G, Pattyn N, et al. Effects of aerobic interval  
382 training and continuous training on cellular markers of endothelial integrity in coronary



383 artery disease: a SAINTEX-CAD substudy. *Am J Physiol Heart Circ Physiol* 2015;  
384 309: H1876-1882. DOI: 10.1152/ajpheart.00341.2015.

385 5. Hill JM, Zalos G, Halcox JPJ, et al. Circulating endothelial progenitor cells,  
386 vascular function, and cardiovascular risk. *New England Journal of Medicine* 2003;  
387 348: 593-600. DOI: 10.1056/NEJMoa022287.

388 6. Schmidt-Lucke C, Rossig L, Fichtlscherer S, et al. Reduced number of  
389 circulating endothelial progenitor cells predicts future cardiovascular events: proof of  
390 concept for the clinical importance of endogenous vascular repair. *Circulation* 2005;  
391 111: 2981-2987. DOI: 10.1161/circulationaha.104.504340.

392 7. Fadini GP, Coracina A, Baesso I, et al. Peripheral blood CD34+KDR+  
393 endothelial progenitor cells are determinants of subclinical atherosclerosis in a middle-  
394 aged general population. *Stroke* 2006; 37: 2277-2282. DOI:  
395 10.1161/01.str.0000236064.19293.79.

396 8. Samman Tahhan A, Hammadah M, Sandesara PB, et al. Progenitor Cells and  
397 Clinical Outcomes in Patients With Heart Failure. *Circ Heart Fail* 2017; 10. DOI:  
398 10.1161/CIRCHEARTFAILURE.117.004106.

399 9. Samman Tahhan AS, Hammadah M, Raad M, et al. Progenitor Cells and  
400 Clinical Outcomes in Patients with Acute Coronary Syndromes. *Circulation Research*  
401 2018. DOI: 10.1161/circresaha.118.312821.

- 402 10. Seals DR, Nagy EE and Moreau KL. Aerobic exercise training and vascular  
403 function with ageing in healthy men and women. *The Journal of Physiology* 2019; 597:  
404 4901-4914. DOI: 10.1113/jp277764.
- 405 11. Ross MD, Wekesa AL, Phelan JP, et al. Resistance exercise increases  
406 endothelial progenitor cells and angiogenic factors. *Med Sci Sports Exerc* 2014; 46: 16-  
407 23. DOI: 10.1249/MSS.0b013e3182a142da.
- 408 12. Steiner S, Niessner A, Ziegler S, et al. Endurance training increases the number  
409 of endothelial progenitor cells in patients with cardiovascular risk and coronary artery  
410 disease. *Atherosclerosis* 2005; 181: 305-310. DOI:  
411 10.1016/j.atherosclerosis.2005.01.006.
- 412 13. Kannel WB and Gordan T. Evaluation of cardiovascular risk in the elderly: the  
413 Framingham study. *Bulletin of the New York Academy of Medicine* 1978; 54: 573-591.
- 414 14. Kannel WB, Feinleib M, McNamara P, et al. An investigation of coronary heart  
415 disease in families: The Framingham Offspring Study. *American Journal of*  
416 *Epidemiology* 1979; 110: 281-290. DOI: 10.1093/oxfordjournals.aje.a112813.
- 417 15. Cheng S, Wang N, Larson MG, et al. Circulating angiogenic cell populations,  
418 vascular function, and arterial stiffness. *Atherosclerosis* 2012; 220: 145-150. DOI:  
419 10.1016/j.atherosclerosis.2011.10.015.

- 420 16. Kannel WB and Sorlie P. Some Health Benefits of Physical Activity: The  
421 Framingham Study. *Archives of Internal Medicine* 1979; 139: 857-861. DOI:  
422 10.1001/archinte.1979.03630450011006.
- 423 17. Wilson PWF, Paffenbarger RS, Morris JN, et al. Assessment methods for  
424 physical activity and physical fitness in population studies: Report of a NHLBI  
425 workshop. *American Heart Journal* 1986; 111: 1177-1192. DOI:  
426 [https://doi.org/10.1016/0002-8703\(86\)90022-0](https://doi.org/10.1016/0002-8703(86)90022-0).
- 427 18. Patel RS, Li Q, Ghasemzadeh N, et al. Circulating CD34+ progenitor cells and  
428 risk of mortality in a population with coronary artery disease. *Circ Res* 2015; 116: 289-  
429 297. DOI: 10.1161/CIRCRESAHA.116.304187.
- 430 19. Egan CG, Fondelli C, Pierantozzi E, et al. Putative endothelial progenitor cells  
431 predict long-term mortality in type-2 diabetes. *Endocrine* 2018. DOI: 10.1007/s12020-  
432 018-1695-0.
- 433 20. Peichev M, Naiyer AJ, Pereira D, et al. Expression of VEGFR-2 and AC133 by  
434 circulating human CD34+ cells identifies a population of functional endothelial  
435 precursors. *Blood* 2000; 95: 952-958.
- 436 21. Hur J, Yoon C-H, Kim H-S, et al. Characterization of two types of endothelial  
437 progenitor cells and their different contributions to neovasculogenesis. *Arterioscler*  
438 *Thromb Vasc Biol* 2004; 24: 288-293. DOI: 10.1161/01.atv.0000114236.77009.06.

- 439 22. Nasser BA, Ebell W, Dandel M, et al. Autologous CD133+ bone marrow cells  
440 and bypass grafting for regeneration of ischaemic myocardium: the Cardio133 trial.  
441 *European Heart Journal* 2014. DOI: 10.1093/eurheartj/ehu007.
- 442 23. Quyyumi AA, Vasquez A, Kereiakes DJ, et al. PreSERVE-AMI: A  
443 Randomized, Double-Blind, Placebo-Controlled Clinical Trial of Intracoronary  
444 Administration of Autologous CD34+ Cells in Patients With Left Ventricular  
445 Dysfunction Post STEMI *Circulation Research* 2017; 120: 324-331. DOI:  
446 doi:10.1161/CIRCRESAHA.115.308165.
- 447 24. Nederveen JP, Baker J, Ibrahim G, et al. Hematopoietic Stem and Progenitor  
448 Cell (HSPC) Mobilization Responses to Different Exercise Intensities in Young and  
449 Older Adults. *Journal of Science in Sport and Exercise* 2020. DOI: 10.1007/s42978-  
450 019-00050-4.
- 451 25. Adams V, Lenk K, Linke A, et al. Increase of circulating endothelial progenitor  
452 cells in patients with coronary artery disease after exercise-induced ischemia.  
453 *Arterioscler Thromb Vasc Biol* 2004; 24: 684-690. DOI:  
454 10.1161/01.ATV.0000124104.23702.a0.
- 455 26. Moazzami K, Lima BB, Hammadah M, et al. Association Between Change in  
456 Circulating Progenitor Cells During Exercise Stress and Risk of Adverse  
457 Cardiovascular Events in Patients With Coronary Artery Disease. *JAMA Cardiology*  
458 2020; 5: 147-155. DOI: 10.1001/jamacardio.2019.4528.

- 459 27. Cavalcante SL, Lopes S, Bohn L, et al. Effects of exercise on endothelial  
460 progenitor cells in patients with cardiovascular disease: A systematic review and meta-  
461 analysis of randomized controlled trials. *Revista Portuguesa de Cardiologia* 2020.  
462 DOI: <https://doi.org/10.1016/j.repc.2019.02.016>.
- 463 28. Fujisawa T, Tura-Ceide O, Hunter A, et al. Endothelial Progenitor Cells Do Not  
464 Originate From the Bone Marrow. *Circulation* 2019; 140: 1524-1526. DOI:  
465 doi:10.1161/CIRCULATIONAHA.119.042351.
- 466 29. Cesari F, Marcucci R, Gori AM, et al. Impact of a cardiac rehabilitation program  
467 and inflammatory state on endothelial progenitor cells in acute coronary syndrome  
468 patients. *Int J Cardiol* 2013; 167: 1854-1859. DOI: 10.1016/j.ijcard.2012.04.157.  
469

470 **Figure legends**

471

472 **Figure 1.** Kaplan Meier Survival Curve's for the relationship between CPC tertile  
473 group and all-cause mortality (A, B, C, D) and cardiovascular mortality (E, F, G, H)  
474 (Tertile 1 = Low count, Tertile 2 = Moderate count, Tertile 3 = High count). Statistical  
475 significance was set at  $p < 0.05$ .

476

477

478

479

480

481

482

483

484

485

486

487

488

489

490

491

492

493

494

495

496

497

498

499

500

501

502

503

504 **Tables**

505 **Table 1. Participant Characteristics**

	All (n=1751)	CVD-free (n=1467, 84%)	CVD (n=284, 16%)	p-value
Age (years)	66 ± 9 [40-92]	65 ± 9 [40-90]	72 ± 9 [51-92]	<0.001
Female (n, %)	940, 53.7%	822, 56%	118, 41.5%	-
BMI (kg·m <sup>2</sup> )	28.4 ± 5.3 [13.8-54.2]	28.2 ± 5.3 [13.8-54.2]	29.2 ± 5.2 [18.4-45.1]	0.007
Systolic Blood Pressure (mmHg)	129 ± 18 [76-204]	129 ± 18 [76-204]	131 ± 19 [90-198]	0.070
Diastolic Blood Pressure (mmHg)	74 ± 11 [34-122]	75 ± 10 [34-122]	70 ± 11 [40-108]	<0.001***
Fasting Glucose (mg/dL)	107.0 ± 24.1 [36-327]	106 ± 23 [58-327]	113 ± 28 [36-292]	<0.001***
Total Cholesterol (mg/dL)	186.0 ± 37.5 [71-322]	190 ± 35.6 [96-322]	164 ± 39.4 [71-289]	<0.001***
HDL-Cholesterol (mg/dL)	57.4 ± 18.2 [21-147]	58.8 ± 18.3 [21-152]	50.3 ± 15.8 [23-130]	<0.001***
Triglycerides (mg/dL)	118.0 ± 70.6 [30-976]	115 ± 67.2 [30-976]	133 ± 84.4 [40-583]	<0.001
Smokers (n,%)	206, 11.8%	170, 12%	36, 13%	
Hypertensive (n, %)	989, 56.5%	831, 57%	158, 56%	-
CD34+ CPCs (% MNCs)	0.0873 ± 0.0492 [0.011-0.490]	0.0875 ± 0.0483 [0.0110-0.490]	0.0860 ± 0.0538 [0.0160-0.370]	0.201
CD34+CD133+ CPCs (% MNCs)	0.0402 ± 0.0366 [0.0020-0.6090]	0.0407 ± 0.0380 [0.0020-0.6090]	0.0375 ± 0.0286 [0.0040-0.2420]	0.290
CD34+CD133+KDR+ (% MNCs)	0.0040 ± 0.0037 [0.0001-0.0470]	0.0040 ± 0.0037 [0.0001-0.0470]	0.0041 ± 0.0039 [0.0002-0.0261]	0.648
ECFC (number of colonies)	43 ± 31 [0-196]	43 ± 31 [0-196]	42 ± 32 [0-178]	0.470

506 *Data are mean ± SD [range]. ECFC- Endothelial Colony Forming Cells (in 1631*

507 *participants). \* p <0.05, \*\*\* p <0.001.*

508

509 **Table 2. CPC Counts and risk of death for all participants**

CPC Subset	Outcome	Model	No. of events/ No. at risk	HR	HR 95% CI	P value
<b>CD34<sup>+</sup> CPCs</b>	All-Cause Mortality	Unadjusted	326/1751	0.64	0.52 - 0.79	<0.001***
		Adjusted <sup>a</sup>	326/1751	0.79	0.64 - 0.98	0.036*
	CVD Mortality	Unadjusted	71/1751	0.54	0.35 - 0.85	0.008**
		Adjusted <sup>a</sup>	71/1751	0.64	0.41 - 1.01	0.055
<b>CD34<sup>+</sup>CD133<sup>+</sup>KDR<sup>+</sup> EPCs</b>	All-Cause Mortality	Unadjusted	326/1751	0.88	0.76 - 1.01	0.066
		Adjusted <sup>a</sup>	326/1751	0.93	0.80 - 1.07	0.300
	CVD Mortality	Unadjusted	71/1751	1.02	0.76 - 1.38	0.888
		Adjusted <sup>a</sup>	71/1751	1.09	0.81 - 1.47	0.579
<b>CD34<sup>+</sup>CD133<sup>+</sup> CPCs</b>	All-Cause Mortality	Unadjusted	303/1630	0.76	0.65 - 0.90	0.001**
		Adjusted <sup>a</sup>	303/1630	0.86	0.72 - 1.01	0.07
	CVD Mortality	Unadjusted	65/1630	0.61	0.43 - 0.87	0.006**
		Adjusted <sup>a</sup>	65/1630	0.63	0.44 - 0.91	0.013*
<b>ECFC</b>	All-Cause Mortality	Unadjusted	321/1653	0.97	0.92 - 1.01	0.145
		Adjusted <sup>a</sup>	321/1653	0.98	0.94 - 1.03	0.478
	CVD Mortality	Unadjusted	71/1653	0.97	0.88 - 1.07	0.547
		Adjusted <sup>a</sup>	71/1653	1.00	0.90 - 1.10	0.932

510 *HR – Hazard Ratio, CI – Confidence Intervals*

511 *<sup>a</sup>Model adjusted for age, sex, BMI, PAI, Smoking Status, Diabetes Status, Hypertension*

512 *and previous CVD diagnosis*

513 *\*\*\* P < 0.001, \*\* P < 0.01, \* P < 0.05*



514 **Table 3. CPC Counts and risk of death for all participants split by CVD diagnosis at exam 8**

CPC Subset	Outcome	Model	CVD Free at Exam 8				CVD Diagnosis by Exam 8			
			No. of events/ No.	HR	HR 95% CI	P value	No. of events/	HR	HR 95% CI	P value
			at risk				No. at risk			
<b>CD34<sup>+</sup> CPCs</b>	All-Cause Mortality	Unadjusted	211/1467	0.70	0.54 - 0.91	0.008**	115/284	0.57	0.41 - 0.81	0.002**
		Adjusted <sup>a</sup>	211/1467	0.89	0.67 - 1.18	0.424	115/284	0.68	0.48 - 0.97	0.032*
	CVD Mortality	Unadjusted	34/1467	0.65	0.34 - 1.26	0.203	37/284	0.49	0.26 - 0.91	0.023*
		Adjusted <sup>a</sup>	34/1467	0.84	0.41 - 1.70	0.619	37/284	0.53	0.28 - 0.99	0.048*
<b>CD34<sup>+</sup>CD133<sup>+</sup>KDR<sup>+</sup> EPCs</b>	All-Cause Mortality	Unadjusted	211/1467	0.90	0.76 - 1.08	0.258	115/284	0.85	0.68 - 1.06	0.149
		Adjusted <sup>a</sup>	211/1467	0.92	0.76 - 1.11	0.385	115/284	0.94	0.75 - 1.18	0.586
	CVD Mortality	Unadjusted	34/1467	0.86	0.56 - 1.33	0.492	37/284	1.17	0.79 - 1.72	0.442
		Adjusted <sup>a</sup>	34/1467	0.80	0.49 - 1.28	0.350	37/284	1.28	0.86 - 1.90	0.229
<b>CD34<sup>+</sup>CD133<sup>+</sup> CPCs</b>	All-Cause Mortality	Unadjusted	196/1364	0.85	0.69 - 1.04	0.11	107/266	0.61	0.46 - 0.82	0.001**
		Adjusted <sup>a</sup>	196/1364	0.99	0.80 - 1.23	0.943	107/266	0.64	0.48 - 0.86	0.003**
	CVD Mortality	Unadjusted	31/1364	0.78	0.47 - 1.30	0.344	34/266	0.45	0.27 - 0.76	0.003**
		Adjusted <sup>a</sup>	31/1364	0.86	0.50 - 1.49	0.588	34/266	0.42	0.24 - 0.72	0.002**
<b>ECFC</b>	All-Cause Mortality	Unadjusted	205/1391	0.96	0.91 - 1.02	0.179	116/262	0.99	0.92 - 1.07	0.782
		Adjusted <sup>a</sup>	205/1391	0.97	0.92 - 1.02	0.261	116/262	1.01	0.93 - 1.09	0.828
	CVD Mortality	Unadjusted	34/1391	1.03	0.90 - 1.19	0.655	37/262	0.93	0.82 - 1.07	0.317
		Adjusted <sup>a</sup>	34/1391	1.03	0.90 - 1.19	0.633	37/262	0.95	0.82 - 1.09	0.437

515 *HR- Hazard Ratio, CI- Confidence Intervals*

516 <sup>a</sup>*Model adjusted for age, sex, BMI, PAI, Smoking Status, Diabetes Status, Hypertension. \*\*\* P < 0.001, \*\* P < 0.01, \* P < 0.05*

517 **Table 4. Association Between Physical Activity Index and CPC Counts**

CPC Subset	Outcome	All	CVD-Free	CVD
		$\beta$ , T-value, P-Value	$\beta$ , T-value, P-Value	$\beta$ , T-value, P-Value
<b>CD34<sup>+</sup></b>	Unadjusted	0.023, 0.967, 0.334	-0.013, -0.486, 0.627	0.176, 3.009, 0.003**
	Adjusted <sup>a</sup>	0.008, 0.322, 0.748	-0.021, -0.813, 0.416	0.153, 2.461, 0.014*
<b>CD34<sup>+</sup>CD133<sup>+</sup></b>	Unadjusted	-0.014, -0.567, 0.571	-0.04, -1.495, 0.135	0.115, 1.893, 0.059
	Adjusted <sup>a</sup>	-0.022, -0.872, 0.383	-0.042, -1.574, 0.116	0.107, 1.616, 0.107
<b>CD34<sup>+</sup>CD133<sup>+</sup>KDR<sup>+</sup></b>	Unadjusted	0.022, 0.901, 0.368	0.002, 0.086, 0.932	0.108, 1.817, 0.07
	Adjusted <sup>a</sup>	0.019, 0.775, 0.439	0.005, 0.194, 0.846	0.080, 1.269, 0.205
<b>ECFC</b>	Unadjusted	0.005, 0.197, 0.844	-0.005, -0.201, 0.841	0.049, 0.785, 0.433
	Adjusted <sup>a</sup>	-0.006, -0.241, 0.809	-0.015, -0.535, 0.592	0.036, 0.537, 0.592

518 <sup>a</sup>Model adjusted for age, sex, BMI, Smoking Status, Diabetes Status and Hypertension.

519 For “All” adjustment also includes previous CVD diagnosis

520 ECFC- Endothelial colony forming cells.

521 \*\*\*  $P < 0.001$ , \*\*  $P < 0.01$ , \*  $P < 0.05$

522

523

524

525

526

527

528

529

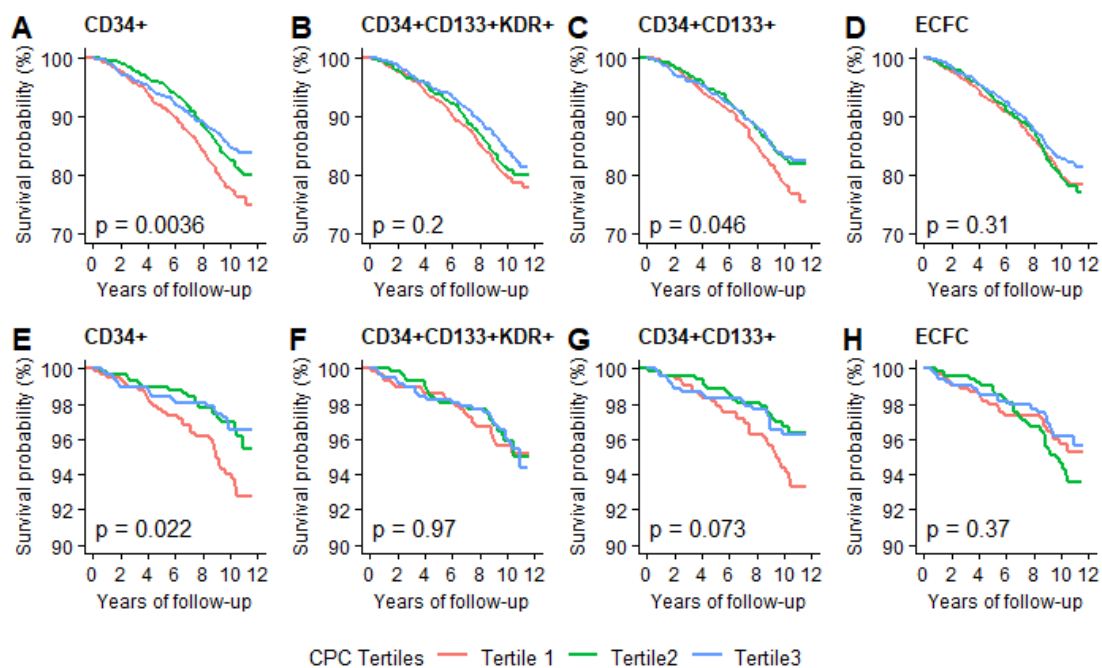
530

531

532

533 **Figures**

534



535

536

537 **Figure 1**

538 **Supplementary information**

539

540 **Data analysis**

541

542 Data analyses were carried out using RStudio Team (2019, RStudio Team (2019). RSt  
543 udio: Integrated Development for R. RStudio, Inc., Boston, MA: [http://www.rstudio.c](http://www.rstudio.com/)  
544 om/) utilising the R core package [1] and the extension packages “dplyr” for data clean  
545 ing and transformation [2], “survival” for survival analyses [3] and “ggplot2” [4].and  
546 “survminer” [5] for figure generation.

547

548 [1] R Core Team (2020). R: A language and environment for statistical computing. R  
549 Foundation for Statistical Computing, Vienna, Austria. URL [https://www.R-project.or](https://www.R-project.org/)  
550 [g/](https://www.R-project.org/).

551 [2] Hadley Wickham, Romain François, Lionel Henry and Kirill Müller (2020). dplyr: A Grammar of  
552 Data Manipulation. R package version 0.8.5. [https://CRAN.R-project.org/package=dpl](https://CRAN.R-project.org/package=dplyr)  
553 [yr](https://CRAN.R-project.org/package=dplyr)

554 [3] Therneau T (2020). *\_A Package for Survival Analysis in R\_*. R package version 3  
555 .1-12, <URL:<https://CRAN.R-project.org/package=survival>>.

556

557 [4] H. Wickham. *ggplot2: Elegant Graphics for Data Analysis*. Springer-Verlag New  
558 York, 2016. <URL: <https://ggplot2.tidyverse.org>>.

559

560 [5] Alboukadel Kassambara, Marcin Kosinski and Przemyslaw Biecek (2019). *surv*  
561 *miner: Drawing Survival Curves using 'ggplot2'*. R package version 0.4.6. [https://CRA](https://CRAN.R-project.org/package=survminer)  
562 [N.R-project.org/package=survminer](https://CRAN.R-project.org/package=survminer)

563

564

565

566

567

568

569

570

571

572 **Supplementary Tables and Figures**

573

574 **Supplementary Table 1. CPC Counts and risk of future CV events in participants**

575 **free of CVD diagnosis at exam 8**

CPC Subset	Outcome	Model	No. of events/ No. at risk	HR	HR 95% CI	P value
<b>CD34<sup>+</sup> CPCs</b>	CVD Event	Unadjusted	191/1467	0.99	0.75 - 1.30	0.925
		Adjusted <sup>b</sup>	191/1467	1.18	0.88 - 1.59	0.279
<b>CD34<sup>+</sup>CD133<sup>+</sup>KDR<sup>+</sup> EPCs</b>	CVD Event	Unadjusted	191/1467	1.09	0.91 - 1.31	0.372
		Adjusted <sup>b</sup>	191/1467	1.06	0.87 - 1.28	0.588
<b>CD34<sup>+</sup>CD133<sup>+</sup> CPCs</b>	CVD Event	Unadjusted	177/1364	0.97	0.77 - 1.21	0.783
		Adjusted <sup>b</sup>	177/1364	1.05	0.83 - 1.33	0.688
<b>ECFC</b>	CVD Event	Unadjusted	187/1391	0.94	0.89 - 1.00	0.052
		Adjusted <sup>a</sup>	187/1391	0.94	0.88 - 1.00	0.046*

HR- Hazard Ratio, CI- Confidence Intervals.

<sup>a</sup>Model adjusted for age, sex, BMI, PAI, Smoking Status, Diabetes Status, Hypertension

\*\*\*  $P < 0.001$ , \*\*  $P < 0.01$ , \*  $P < 0.05$

576

577

578

579

580

581

582

583

584

585

586

587

588 **Supplementary Table 2. Association Between Time Spent at Moderate+Heavy**  
 589 **Physical Activity and CPC Counts.**

CPC Subset	Outcome	All	CVD-Free	CVD
		$\beta$ , T-value, P-Value	$\beta$ , T-value, P-Value	$\beta$ , T-value, P-Value
<b>CD34<sup>+</sup></b>	Unadjusted	0.007, 0.277, 0.782	-0.027, -1.033, 0.302	0.159, 2.706, 0.007**
	Adjusted <sup>a</sup>	0.013, 0.538, 0.591	-0.014, -0.542, 0.588	0.149, 2.449, 0.015*
<b>CD34<sup>+</sup>CD133<sup>+</sup></b>	Unadjusted	-0.026, -1.053, 0.292	-0.046, -1.723, 0.085	0.078, 1.273, 0.204
	Adjusted <sup>a</sup>	-0.020, -0.819, 0.413	-0.036, -1.362, 0.173	0.069, 1.086, 0.278
<b>CD34<sup>+</sup>CD133<sup>+</sup>KDR<sup>+</sup></b>	Unadjusted	0.029, 1.207, 0.228	0.010, 0.365, 0.715	0.119, 2.016, 0.045*
	Adjusted <sup>a</sup>	0.035, 1.449, 0.148	0.019, 0.712, 0.477	0.112, 1.827, 0.069
<b>ECFC</b>	Unadjusted	-0.009, -0.349, 0.727	-0.014, -0.541, 0.589	0.015, 0.243, 0.809
	Adjusted <sup>a</sup>	-0.009, -0.357, 0.721	-0.013, -0.479, 0.632	0.006, 0.096, 0.924

590 <sup>a</sup>Model adjusted for age, sex, BMI, Smoking Status, Diabetes Status and Hypertension.

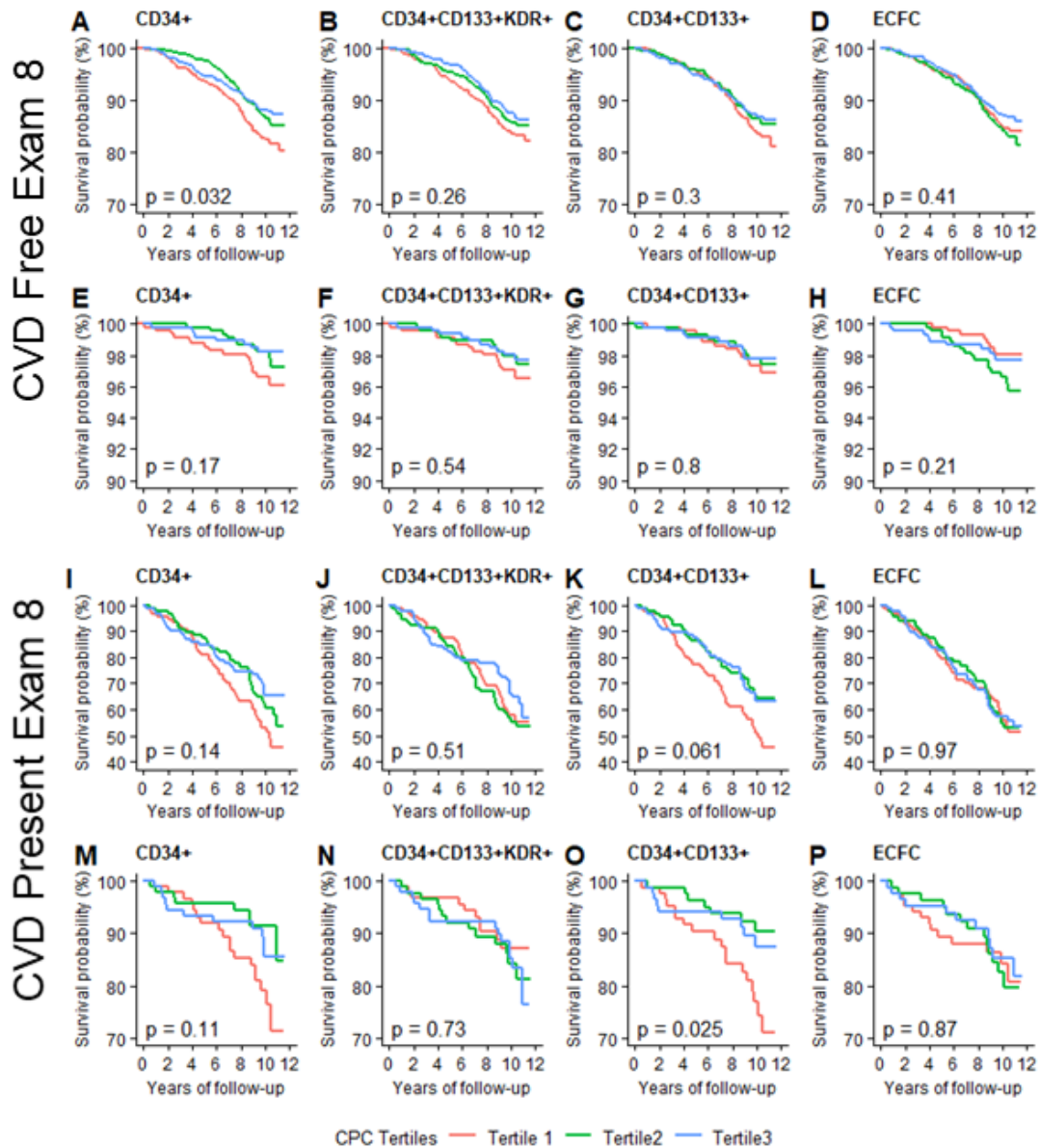
591 For “All” adjustment also includes previous CVD diagnosis

592 ECFC- Endothelial colony forming cells.

593 \*\*\*  $P < 0.001$ , \*\*  $P < 0.01$ , \*  $P < 0.05$

594

595



596

597 **Supplementary Figure 1.** Kaplan Meier Survival Curve's for the relationship between  
 598 mortality and CPC tertile split by participants free of CVD at exam 8 (A – H) and those  
 599 diagnosed with CVD at exam 8 (I – P). Curves A- D and I– L are for all-cause mortality  
 600 and curves E – H and M - P are for CV mortality. (Tertile 1 = Low count, Tertile 2 =  
 601 Moderate count, Tertile 3 = High count). Statistical significance was set at  $p < 0.05$ .

602

603