

Title

Weeding Through the Haze: A Survey on Cannabis Use Among People Living with Parkinson's Disease in the US

Authors

Megan P. Feeney
Parkinson's Foundation
New York, NY
mfeeney@parkinson.org

Danny Bega
Northwestern University Feinberg School of Medicine
Chicago, IL
dbega@nm.org

Benzi M. Kluger
Departments of Neurology and Medicine, University of Rochester Medical Center
Rochester, NY
benzi_kluger@urmc.rochester.edu

A. Jon Stoessl
Division of Neurology, Pacific Parkinson's Research Centre and Djavad Mowafaghian Centre for Brain Health, University of British Columbia
jstoessl@mail.ubc.ca

Christiana M. Evers
Parkinson's Foundation
New York, NY
cevers@parkinson.org

Rebeca De Leon
Parkinson's Foundation
Miami, FL
rdeleon@parkinson.org

*James C. Beck
Parkinson's Foundation
New York, NY
jbeck@parkinson.org

Abstract

Symptomatic management of Parkinson's disease (PD) is complex and many symptoms, especially non-motor symptoms, are not effectively addressed with current medications. In the US, cannabis has become more widely available for medical and recreational use, permitting those in the PD community to try alternative means of symptom control. However, little is known

about the attitudes towards, and experiences with, cannabis use among those living with PD. To address this shortcoming, we distributed an anonymous survey to 7,607 people with PD in January 2020 and received 1,064 complete responses for analysis (14%). Respondents represented 49 states with a mean age of 71.2 years (\pm 8.3) and mean PD duration of 7.4 years (\pm 6.2). About a quarter of respondents (24.5%) reported cannabis use within the previous six months. Users reported learning about cannabis use from the internet/news (30.5%) and friends or other people with PD (26.0%). Cannabis users were more likely to report insufficient control of their non-motor symptoms with prescription medications than non-users ($p < 0.005$). Cannabis was primarily used for PD (63.6%) and was most often used to treat nonmotor symptoms of anxiety (45.5%), pain (44.0%) and sleep disorders (44.0%). However, nearly a quarter of users (23.0%) also reported they had stopped cannabis use in the previous six months, primarily due to a lack of symptom improvement (35.5%). Three quarters of respondents (75.5%) did not use cannabis, primarily because there was a lack of scientific evidence supporting efficacy (59.9%). Our results suggest that the lack of formal guidance or research evidence about cannabis for PD may in part underlie inconsistencies in both use and reported effectiveness.

Introduction

Parkinson's disease (PD) is the second most common neurodegenerative disorder, affecting more than 1 million Americans at a cost to society of more than \$50 Billion dollars.^{1,2} While PD is typically defined clinically by four cardinal motor symptoms that include rest tremor, bradykinesia, rigidity and postural instability,³ the symptoms of PD are broader. Non-motor manifestations of PD are varied and include sleep disturbances such as insomnia, sleep fragmentation and REM sleep behavior disorder (RBD), cognitive changes, depression, anxiety, hallucinations, hyposmia, pain and autonomic dysfunction (constipation, orthostatic hypotension and urinary incontinence).^{4,5} Additionally, treatment of PD with levodopa or other dopaminergic agents is commonly associated with involuntary movements (levodopa-induced dyskinesias, LID) that may be troublesome for some patients. The efficacious control of LID and of non-motor features represents a major therapeutic challenge that is often unmet for many of those living with PD.⁵ Therefore, many of those living with PD in the US are interested in complementary and alternative or integrative therapies (CAIM) that may bring relief to their troubling non-motor symptoms.^{6,7}

The medicinal use of cannabis represents a novel, alternative approach toward PD symptom control. Preclinical evidence suggests that cannabinoids could be widely beneficial to neurodegenerative diseases, including PD.^{8,9} A small survey in Colorado of individuals with PD found that the handful of identified cannabis users reported it to be among the most effective of complementary therapies.^{10,11} However, there remains a lack of evidence of both efficacy and safety to support the recommendation of the use of cannabis as a therapy for PD.^{12,13}

Nevertheless, there is an increasing interest in the use of medical cannabis. In one recent survey, 95% of movement disorder specialist neurologists reported being asked to prescribe medical cannabis to their patients.¹⁴ Currently, 47 of 50 states in the US permit the sale use, or consumption of hemp-sourced cannabidiol (CBD) products containing less than 0.3%

tetrahydrocannabinol (THC), 33 of 50 states permit the use of marijuana-sourced CBD products for qualifying medicinal purposes and 11 of 50 states permit recreational use of marijuana-sourced CBD products.^{12,15,16} As a result, broad numbers of individuals living with PD now have access to cannabis. Adding to this mix is the publicity that surrounds cannabis use for PD.¹⁷ In this study, we administered an anonymous survey to Parkinson's Foundation constituents with PD, with the goal of understanding the motivations and experiences of cannabis use among people living with PD.

Results

Survey population

An anonymous, electronic survey (see Appendix A) was sent by email on January 17, 2020 to 7,607 individuals with PD who had previously engaged with the Parkinson's Foundation, primarily through attendance of in-person or online educational event or calls to the Foundation's toll-free Helpline. When the survey closed on February 7, 2020, 1064 individuals from 49 states had provided complete responses, providing a response rate of 14%. State representation can be found in Fig. 1. Demographic information about survey respondents can be found in Table 1. Briefly, respondents averaged 71.2 years (± 8.3) in age with a mean PD duration of 7.4 years (± 6.2). Most (68.5%) respondents held a bachelor's degree or higher and were currently retired or not employed (87.3%).

Non-Users are the majority

We began our survey by asking participants if they had used marijuana or cannabis in the last six months. Most respondents (75.5%, 803/1064) did not report cannabis use within this time frame. Those individuals who identified as non-users were then asked to select up to three reasons for not using cannabis (see Fig. 2). The most frequently identified reasons for non-use included a lack of evidence of the efficacy of cannabis (59.9%, 481/803), a fear of cannabis side effects (34.9%, 280/803) and "other reasons" (31.3%, 250/803), which led to an open text field for respondents to provide additional information. The theme of these open text responses focused on the legality of cannabis (both state and federal), a lack of a need to use cannabis, as well as a disinterest in cannabis overall. Though both men and women selected lack of evidence as a top reason not to use cannabis, men were more likely to select this reason than women (OR = 1.36, 95% CI 1.02 to 1.81).

We then asked non-users to choose up to three reasons that might influence them to consider using marijuana or cannabis. The majority of non-users (76.0%, 610/803) indicated that evidence which supported cannabis use for PD would be most influential in any deliberations to begin cannabis use. Other factors that would also be important in their decision would be if their health team encouraged its use (54.6%, 438/803) or if cannabis side effects were better understood (35.5%, 285/803).

Motivations and Routines Around Cannabis Use

Overall, a quarter of respondents (24.5%, 261/1064) reported they had used cannabis within the previous six months. Cannabis users were younger by an average of 3 years in age than non-users (69 ± 8.6 vs 72 ± 8.1 years; $p < 0.001$). When respondents were asked why they used

cannabis, the two most common reasons selected were for medical reasons related to their PD only (63.6%, 166/261), or for the combination of both medical and nonmedical (e.g., recreational) reasons (21.5%, 56/261). For those who used cannabis explicitly for their PD, about half (46.8%, 104/222) indicated they used cannabis for PD symptoms in general and a similar number (43.2%, 96/222) indicated they used cannabis for specific PD symptoms (see Table 2). Comparable findings were identified through thematic analysis of open-text responses. Among the 246 users (85.1%) who reported their cannabis use was for medical or for both medical and non-medical reasons, the most commonly identified reasons for trying cannabis included curiosity (22.8%, 56/246), the idea that cannabis was a natural substance (16.7%, 41/246) and word of mouth (11.4%, 28/246).

We next sought to understand how cannabis users acquired their knowledge about cannabis as a potential therapy (see Table 2). For the majority of users who used cannabis for any medical or for both medical and non-medical reasons (excluding recreational users and users who did not know their reason for use), the most common sources of information were from the internet/news (30.5%, 75/246) and from friends or other people with PD (26.0%, 64/246). Most of these users (64.4%, 168/246) had not received a prior recommendation to use cannabis from a licensed doctor or provider.

Following up our question on knowledge, we asked these medical and medical and non-medical users how they learned how to use cannabis, such as dosage, type and frequency of use. We found that a majority of users (56.1%, 138/246) reported that they were not provided any information about recommendations on how to use cannabis (such as dosage, type and frequency of use). Of the users who were provided information (43.9%, 108/246), the most common sources of information were reported to be a non-PD doctor (25.0%, 27/108), staff at a dispensary (22.2%, 24/108) and friends or other people with PD (22.2%, 24/108).

Among all users, we also sought to better understand the cannabis formulations, strengths and routes of administration they most often used. Two-thirds (64.4%, 168/261) considered themselves PRN or “as needed” users and the remainder (35.6%, 93/261) considered themselves “regular” users. However, men were more likely to report identifying as a “regular” user than women (OR = 1.75, 95% CI 1.04 to 2.94). The daily routine of cannabis use varied and a summary can be found in Table 3. The majority of users reported their time of use at the end of the day, either in the evening (25.3%, 66/261) or at bedtime (26.4%, 69/261, see Fig. 3A).

Cannabis comes in a number of forms, which can impact how rapidly it is absorbed and for how long it persists in the body.¹⁸ Users of cannabis most frequently reported spraying or dropping (for example, sublingual drops) (29.1%, 76/261), smoking (27.2%, 71/261) and eating or swallowing (19.2%, 50/261) as their primary method of cannabis use (Fig. 3B). Users acquired cannabis most commonly through a medical dispensary (38.7%, 101/261) or a family member or friend (24.5%, 64/261, see Fig. 3C). When asked details about the type of cannabis used, such as strain of cannabis and concentration of CBD and THC, including high THC, low THC, high CBD, etc., about a quarter of all users did not know (22.2%, 58/261, see Fig. 3D). Of those

who did (77.8%, 203/261), almost half did not know the specific type (48.3%, 98/203) or dosage (47.0%, 95/203) they used. Chi-square tests revealed significant differences between the selected reasons for cannabis use (PD medical, other medical, non-medical or both medical and non-medical) and the time of day when it was used ($p \ll 0.001$), method of use ($p < 0.001$), where the cannabis was acquired ($p \ll 0.001$), and the type of cannabis used ($p < 0.003$). Among users, there was also a significant difference between men's and women's reasons for cannabis use ($p < 0.02$) and the type of cannabis used ($p < 0.04$).

Symptom management by cannabis

We asked users who reported use for symptom management whether they felt that cannabis addressed their motor and non-motor symptoms. Of these users, most (72.0%, 144/200) reported that its use did not address or only partially addressed their motor symptoms. A nearly equally large majority (70.0%, 140/200) reported that cannabis use did not address or only somewhat addressed their non-motor symptoms.

Respondents who reported using cannabis for general or for specific PD symptoms (90.1%, 200/261) were also asked about perceived symptom improvement. The most common non-motor symptoms that cannabis users were trying to treat with their cannabis use were anxiety (45.5%, 91/200), pain (44.0%, 88/200) and sleep disorders (44.0%, 88/200). The most common motor symptoms that cannabis users were trying to treat with their cannabis use included stiffness (43.0%, 86/200) and tremor (42.0%, 84/200). Additional symptom information can be found in Fig. 4. There were no differences found between type of cannabis used and the top selected symptoms for anxiety, pain, sleep disturbances, stiffness and tremor. However, there were differences found between type of cannabis used and the selected symptoms, appetite, dystonia and urinary symptoms, but due to the low selection rates, further analysis was not conducted.

When asked about associated symptom relief, the majority of these users reported that cannabis use led to a moderate or considerable improvement in the severity of anxiety (78.0%, 71/91), pain (71.6%, 63/88), sleep disorders (76.1%, 67/88), stiffness (64.0%, 55/86) and tremor (63.1%, 53/84). Of those users who selected a slight, moderate or considerable improvement in symptom severity, greater than 80% reported these changes to be meaningful for each of the five symptoms (90.6% anxiety, 89.5% pain, 91.3% sleep disorders, 82.9% stiffness and 84.9% tremor). The majority of these users also reported that cannabis use led to a moderate or considerable improvement in the frequency of anxiety (67.0%, 61/91), pain (63.6%, 56/88), sleep disorders (61.4%, 54/88), stiffness (58.1%, 50/86) and tremor (56.0%, 47/84). Of those users who selected a slight, moderate or considerable improvement in symptom frequency, greater than 80% reported these changes to be meaningful for each of the five symptoms (91.3% anxiety, 87.8% pain, 93.2% sleep disorders, 83.1% stiffness and 93.9% tremor). Reported improvement can be found in Table 4.

Cannabis user experiences

A small portion of users (12.6% 33/261) reported negative side effects from cannabis use. We also polled non-users of cannabis who had indicated a previous negative experience as a

reason for not using cannabis in the past six months (4.1%, 33/803). Of these non-users, about half (51.5%, 17/33) also reported negative side effects from cannabis use. These two combined sub-groups most commonly identified anxiety (30.0%, 15/50), impaired coordination (20.0%, 10/50), dizziness (20.0%, 10/50), and “other reasons” (38.0%, 19/50; open text responses included sleepiness, confusion, worsening orthostatic hypotension, etc.) as side effects of cannabis use.

About a quarter of cannabis users (23.0%, 60/261) had stopped using cannabis in the previous six months. Among these users as well as the subset of non-users who had indicated a previous negative experience (4.1%, 33/803) a lack of symptom improvement (35.5%, 33/93) was the most commonly selected reason for discontinued use (Fig. 5). Among users who had not discontinued use in the previous six months, the most commonly identified items that cannabis use allowed for included general symptom improvement (40.3%, 81/201), relaxation (14.4%, 29/201) and improvement in daily activities (9.0%, 18/201).

Medication satisfaction

All respondents (both users and non-users) reported on their prescription medication use. A few reported not taking medications for PD motor (6.6%, 70/1064) or for non-motor (5.2%, 55/1064) symptoms. Very few (4.6%, 49/1064) were taking no medication at all, and this group had a significantly shorter disease duration than those taking medication ($p < 0.001$). However, those not taking PD prescription medications were no more or less likely to report cannabis usage. Among all respondents, men were more likely to be taking prescription medications for PD motor symptoms (OR = 2.11, 95% CI 1.28 to 3.50) or for PD non-motor symptoms (OR = 2.03, 95% CI 1.15 to 3.56) than women.

We asked those taking PD medications whether their prescription medications addressed their motor and non-motor symptoms. For motor symptom management, about half (45.3%, 482/1064) reported that medications mostly addressed their symptoms. For non-motor symptom management, a little less than half (41.5%, 441/1064) reported that medications somewhat addressed their symptoms. There were no reported differences between users and non-users regarding mean levels to which medication addressed motor symptoms; however, there were significant differences between users and non-users for non-motor symptoms, with 67.4 % (165/245) of cannabis users reporting that medications were less effective at addressing their non-motor symptoms than non-users ($p < 0.005$).

Despite users being less satisfied with prescription medications, they still rated their prescription medications as more efficacious than cannabis for control of both motor and non-motor symptoms. Among users, the majority (84.5%, 202/239) reported that their prescription medication addressed motor symptoms better than or equal to cannabis ($p < 0.001$), and 74.9% (179/239) of users reported that their prescription medication addressed non-motor symptoms better than or equal to cannabis, but this difference was not significant ($p = 0.052$).

Among all users, the majority (84.7%, 221/261) reported that cannabis use had no impact on their prescription medication usage, and of the users who had indicated cannabis use for both

medical and medical and non-medical reasons, most (89.0%, 219/246) reported that they had not thought that cannabis would be a replacement for their PD prescription medications when they began using.

Clinical Trials

We queried all respondents (both users and non-users) about their level of interest in learning about and enrolling in a clinical trial exploring the impact of cannabis on PD symptoms. Most (82.3%, 876/1064) were interested in learning more information about a clinical trial, and more than half (62.3%, 663/1064) were interested in enrolling in a clinical trial. Upon further analysis, users were found to be more likely to be interested in learning more information (OR = 3.63, 95% CI 2.18 to 6.02) and more likely to be interested in clinical trial enrollment (OR = 3.18, 95% CI 2.27 to 4.45) than non-users.

Discussion

We examined cannabis use, knowledge, motivations, and routines among people living with PD. This study is unique in that we captured both medicinal and recreational cannabis use among a large number of people living with PD from nearly all fifty states. From our population sample, nearly a quarter of those surveyed (24.5%) reported the use of cannabis. This is within the wide range of cannabis usage reported among people living with PD in the literature (between 4% and 80%).^{10,11,14,19} However, our reported number of users may be higher because we assessed both the recreational and medicinal use of cannabis while other studies cited assessed medicinal use only.

Our results suggest that although there are many people with PD using cannabis as a CAIM treatment for their motor and non-motor symptoms, the lack of formal guidance about cannabis usage for PD may underlie inconsistencies in use and reported effectiveness. The survey results also indicate a knowledge gap among people living with PD, which may be impacting their decisions about cannabis use, as a large portion of users reported not knowing the type, brand or dosage of cannabis they primarily use. This knowledge gap, combined with the receipt of information and recommendations primarily through the internet, friends or other people living with PD or word of mouth, as opposed to a licensed health provider, could be partially responsible for the perceived confusion about expectations and efficacy. We would expect that specific cannabis formulations, ratio of CBD to THC, route of administration, and strain (*sativa* vs *indica*) might have a differential impact of specific symptoms that patients are trying to address.^{12,13,18} With these factors ignored or unknown and without an individualized and educated approach, the potential for success may be limited and the potential for adverse reactions may be amplified. However, in this study, users who did not know the type of cannabis they used compared to those who did know did not report significantly different levels to which cannabis addressed motor and non-motor symptoms.

Among some users, reported cannabis use may have been beneficial for particular motor and non-motor PD symptoms including anxiety, pain, sleep disorders, stiffness and tremor. These symptoms are consistent with other research studies examining motor and non-motor effects of cannabis on PD symptoms.^{11,14,20-24} In this study, users of cannabis reported it most improved

the severity of anxiety, pain and sleep disorders. However, overall use and the level to which cannabis was reported to address motor and non-motor symptoms varied widely. This was particularly evident by both the reported low levels of motor and non-motor symptom relief by cannabis compared to prescription medications and the 23.0% discontinuance rate in the previous six months, which was greater than the 14% reported in in a survey of MS patients.²⁵ Here, discontinued use was primarily reported due to a lack of symptom improvement. These findings are in line with the inconsistent efficacy observed in the limited clinical trials conducted on cannabis and PD.^{12,26,27}

We found that a majority of people living with PD and using cannabis, were doing so without having been provided information or provider recommendations. This was not entirely surprising; a previous study found a significant cannabis knowledge gap among specialized Parkinson's disease clinicians that paralleled our observed knowledge gap in people with PD. In that survey; the majority of clinicians reported they lacked the formal training and knowledge of cannabis as a treatment alternative for PD motor and non-motor symptoms.¹⁴

It is important that people living with PD are provided information from reputable, evidence-based sources. Considering the growing legality of cannabis access and customization of cannabis formulations marketed to people living with PD, additional research is needed for both clinicians and people with PD to better understand the efficacy of cannabis for PD motor and non-motor symptoms. If cannabis is intended to be used as a medicinal or CAIM treatment for PD, formal recommendations are needed to fill the current knowledge gap around cannabis type, dosage and efficacy. Any future research or clinical trials targeting the efficacy of cannabis should clearly define these recommendations for use and prioritize the communication of such recommendations to enrolled participants.

The large number of non-users reported here suggest that cannabis use may not be viewed by people living with PD as a primary medicinal treatment option for PD. Although 33 states have legalized cannabis use for medical conditions, PD is recognized as a qualifying medical condition in only 17 of these states.¹² In this study, 36.4% of cannabis users had other medical, recreational or a combination of reasons for cannabis use, and the identified reasons for use were associated with variability in responses to use routines and the reported level to which cannabis addressed PD symptoms.

Cannabis use did not have an impact on PD prescription medications. Indeed, nearly all respondents (89%) reported that they knew cannabis would not be a replacement for their current medications. However this finding differs from other studies, in which prescription medication use decreased among cannabis users.¹⁹ Despite the perceived hype around cannabis for PD,¹⁷ a healthy skepticism seems apparent among non-users. Nearly three-quarters (76%) would consider cannabis use only if there were scientific evidence to support the claimed benefits. Our results would suggest that people living with PD expect and could benefit from more evidence about use and outcomes.

It is notable that pain is one of the symptoms best described in the literature that has evidence supporting use of cannabis in other populations such as HIV neuropathy and cancer related pain.^{28,29} However, those results have been recently called into question.³⁰ Supporting the point that patients look towards evidence, here, one of the main uses reported for cannabis among those with PD was for the amelioration of pain symptoms. As evidence is generated around the efficacy of cannabis for PD, such evidence is expected to influence how cannabis use is viewed as a PD treatment option in the future.

There are several limitations to this study. The study response rate of 14% may not have been representative of the PD population. Users may have been more inclined to respond to the survey and report favorable results than non-users, which could have influenced and inflated the number of users and benefits leading to a possible response bias. However, the large number of non-users also participating may have mitigated this potential response bias by users. All respondents were required to complete the survey electronically, and this survey invitation was sent only to those who had an active email address. Given that PD predominantly affects the older population, it is possible that the technology and email requirements excluded several who did not have an active email address or access to an electronic or mobile device. It is similarly noteworthy that the average educational level (and presumably socioeconomic status) of the respondents was high. Thus, our respondents may be more motivated to participate in such surveys, more comfortable with the use of electronic technology, and potentially less concerned about legal ramifications of their participation. Although cannabis is recreationally legal in 11 states and medicinally legal in 33 states,¹² it remains a United States Drug Enforcement Administration Schedule I substance. For this reason, people living with PD may have been reluctant to report their cannabis use, leading to an undercount of user prevalence. Policy around cannabis varies globally and use likely does so as well. This study was limited to the United States and is therefore not reflective of other countries' cannabis use trends or perceptions. The demographics reflected in this study primarily consisted of white, married and highly educated respondents, which likely do not reflect the entire PD population.

In summary, a large survey of individuals with PD regarding their attitudes and knowledge of cannabis revealed that 1 in 5 of people with PD are current cannabis users. Reassuringly, most of these users recognize that cannabis is not a substitute for their current medications and also see the limited efficacy of cannabis for symptom management. Many people with PD justifiably are not using cannabis because of a lack of evidence to support its use with PD. Despite the lack of evidentiary support, it is a concern that PD cannabis users lack resources to guide them on the potential use of cannabis for PD. PD cannabis users identify several non-motor symptoms that may be responsive to cannabis and should be the target of future clinical experiments to see if this reported experience bares out in a larger population.

Methods

Standard Protocol Approvals, Registrations, and Patient Consents

The Western Institutional Review Board (WIRB) approved this study. Given the low-risk nature of the protocol and anonymous data collection, the Board found that this research meets the

requirements for a waiver of consent under 45 CFR 46 116 (f) [2018 Requirements] 45 CRF 46.116(d) [Pre-2018 Requirements].

Patient Surveys

A review of publicly available surveys about cannabis use or perceptions of use was conducted, and relevant questions were used or modified to fit this survey.^{14,31–35} The survey was then reviewed by three people living with PD to ensure relevance and readability.

An invitation to an anonymous, electronic survey was emailed on January 17, 2020 to 7,607 people with Parkinson's disease. These individuals were identified as having attended an online or in-person Parkinson's Foundation educational event or having called the Parkinson's Foundation Helpline in the 2019 calendar year. Reminder emails, two in total, were sent a week after the initial invitation and a week before the survey closed. The survey remained open for three weeks and closed on February 7, 2020.

The online questionnaire consisted of seven sections:

1. A screening question to confirm that the respondent was a person with Parkinson's disease (*number of questions, n = 1*).
2. A question about cannabis usage in the last six months. Due to possible confusion about the definition of cannabis, both the terms marijuana and cannabis were included in all questions throughout the survey (*n = 1*).
3. Questions about reasons for not using cannabis (*n = 2*).
4. Questions about motivations for cannabis use, information sources use, frequency and methods of use, perceived PD symptom or medication side effect improvement, perceived cannabis side effects, cessation of cannabis use and motivations for cessation (*n = 16*).
5. Questions about PD prescription medications and perceived impact and interactions on PD prescription medications (*n = 4*).
6. Questions about interest in future cannabis clinical trials (*n = 2*).
7. Basic demographic information including year of birth and diagnosis, marital status, gender, employment status, etc. (*n = 11*).

The full questionnaire can be viewed in the Appendix.

Of the 1,339 surveys returned, 261 were incomplete and were discarded from further analysis. There were 1,078 completed responses, however, five were discarded due to incomplete or incorrect geographic information (e.g. one, four or eight digit zip codes) and an additional nine were discarded due to suspected inaccuracy of birth year and diagnosis year (e.g. reported year of birth after 2010 or reported year of diagnosis equal to reported year of birth). 1,064 completed responses were available for analysis. However, when results were further analyzed by gender, five respondents who had selected other or prefer not to answer as their gender were removed from the gender analysis portion of the reported results.

Statistical Analysis

The anonymous survey was collected and managed using Research Electronic Data Capture (REDCap) tools hosted at the Parkinson's Foundation.^{36,37} Statistical analyses were performed using the programming language R.³⁸ Determination of associations between demographic and user status and reported outcomes was performed using Student's t-test for continuous variables and Pearson's Chi-squared test (including the Monte Carlo procedure for p-value approximation where cell counts were below 5) for categorical variables. Variables rating demographic characteristics, user stats and reported outcomes that were dichotomous or could be dichotomized were examined using Pearson's Chi-squared test and unadjusted odds ratios. $P < 0.05$ was considered statistically significant. Open text collected in the survey were evaluated through thematic analysis.

Data Availability

The datasets generated during and/or analyzed during the current study are available from the corresponding author on reasonable request.

Acknowledgements

The authors would like to acknowledge Parkinson's Foundation Research Advocates Steven Gilbert, Andre Hosang and Elizabeth Ogren for their contributions to survey review from their perspectives of people living with Parkinson's disease. We would also like to thank Tom Borger and his team at Ilera Healthcare for sharing sample cannabis-related survey questions.

Author Contributions

M.P.F.: research project organization and execution; survey design; execution and review of statistical analysis; and writing of first draft of the manuscript. D.B., B.M.K., A.J.S., and C.M.E.: survey design and review of manuscript. R.D.L: IRB protocol execution and review of the manuscript. J.C.B.: research project conception; survey design; review of statistical analysis; and review of the manuscript.

Competing Interests

The authors declare no competing interests.

References

1. Marras, C. *et al.* Prevalence of Parkinson's disease across North America. *Npj Park. Dis.* **4**, 21 (2018).
2. Yang, et al. Current and Projected Future Economic Burden of Parkinson's Disease in the U.S. *Npj Park. Dis.* **Accepted manuscript**, (2020).
3. Lees, A. J., Hardy, J. & Revesz, T. Parkinson's disease. *The Lancet* **373**, 2055–2066 (2009).
4. Postuma, R. B. *et al.* MDS clinical diagnostic criteria for Parkinson's disease. *Mov. Disord.* **30**, 1591–1601 (2015).
5. Schapira, A. H. V., Chaudhuri, K. R. & Jenner, P. Non-motor features of Parkinson disease. *Nat. Rev. Neurosci.* **18**, 435–450 (2017).
6. Subramanian, I. Complementary and Alternative Medicine and Exercise in Nonmotor Symptoms of Parkinson's Disease. *Int. Rev. Neurobiol.* **134**, 1163–1188 (2017).
7. Donley, S., McGregor, S., Wielinski, C. & Nance, M. Use and perceived effectiveness of complementary therapies in Parkinson's disease. *Parkinsonism Relat. Disord.* **58**, 46–49 (2019).
8. Aymerich, M. S. *et al.* Cannabinoid pharmacology/therapeutics in chronic degenerative disorders affecting the central nervous system. *Biochem. Pharmacol.* **157**, 67–84 (2018).
9. Basavarajappa, B. S., Shivakumar, M., Joshi, V. & Subbanna, S. Endocannabinoid system in neurodegenerative disorders. *J. Neurochem.* **142**, 624–648 (2017).
10. Venderová, K., Růžička, E., Voříšek, V. & Višňovský, P. Survey on cannabis use in Parkinson's disease: Subjective improvement of motor symptoms. *Mov. Disord.* **19**, 1102–1106 (2004).
11. Finseth, T. A. *et al.* Self-Reported Efficacy of Cannabis and Other Complementary Medicine Modalities by Parkinson's Disease Patients in Colorado. *Evid. Based Complement. Alternat. Med.* **2015**, 874849 (2015).

12. Parkinson's Foundation. *Parkinson's Foundation Consensus Statement on the Use of Medical Cannabis for Parkinson's Disease*.
https://www.parkinson.org/sites/default/files/Medical%20Cannabis%20Statement_FINALv2_0.pdf (2020).
13. Kluger, B., Triolo, P., Jones, W. & Jankovic, J. The therapeutic potential of cannabinoids for movement disorders. *Mov. Disord.* **30**, 313–327 (2015).
14. Bega, D., Simuni, T., Okun, M. S., Chen, X. & Schmidt, P. Medicinal Cannabis for Parkinson's Disease: Practices, Beliefs, and Attitudes Among Providers at National Parkinson Foundation Centers of Excellence. *Mov. Disord. Clin. Pract.* **4**, 90–95 (2017).
15. Harrar, S. What Is Medical Marijuana and Facts You Need to Know. *AARP*
<http://www.aarp.org/health/drugs-supplements/info-2019/basics-on-medical-marijuana.html>.
16. CBD Awareness Project. 2020 CBD Laws by State. *CBD Laws by State*
<https://www.cbdoil.org/cbd-laws-by-state/> (2020).
17. Robledo, I. & Jankovic, J. Media hype: Patient and scientific perspectives on misleading medical news. *Mov. Disord.* **32**, 1319–1323 (2017).
18. MacCallum, C. A. & Russo, E. B. Practical considerations in medical cannabis administration and dosing. *Eur. J. Intern. Med.* **49**, 12–19 (2018).
19. Kindred, J. H. *et al.* Cannabis use in people with Parkinson's disease and Multiple Sclerosis: A web-based investigation. *Complement. Ther. Med.* **33**, 99–104 (2017).
20. Shohet, A., Khlebtovsky, A., Roizen, N., Roditi, Y. & Djaldetti, R. Effect of medical cannabis on thermal quantitative measurements of pain in patients with Parkinson's disease. *Eur. J. Pain* **21**, 486–493 (2017).
21. Myers, B. *et al.* Medical Cannabis in the Treatment of Parkinson's Disease (P2.8-016). *Neurology* **92**, P2.8-016 (2019).
22. Balash, Y. *et al.* Medical Cannabis in Parkinson Disease: Real-Life Patients' Experience. *Clin. Neuropharmacol.* **40**, 268–272 (2017).

23. Lotan, I., Treves, T. A., Roditi, Y. & Djaldetti, R. Cannabis (Medical Marijuana) Treatment for Motor and Non–Motor Symptoms of Parkinson Disease: An Open-Label Observational Study. *Clin. Neuropharmacol.* **37**, 41–44 (2014).
24. Babayeva, M., Assefa, H., Basu, P., Chumki, S. & Loewy, Z. Marijuana Compounds: A Nonconventional Approach to Parkinson’s Disease Therapy. *Park. Dis.* **2016**, 1279042 (2016).
25. McCormack, K. *et al.* Multiple Sclerosis and Use of Medical Cannabis: A Retrospective Review Evaluating Symptom Outcomes (P5.2-106). *Neurology* **92**, (2019).
26. Bougea, A. *et al.* Medical cannabis as an alternative therapeutics for Parkinsons’ disease: Systematic review. *Complement. Ther. Clin. Pract.* **39**, 101154 (2020).
27. American Academy of Neurology. POSITION STATEMENT: Use of Medical Marijuana for Neurologic Disorders. <https://www.aan.com/policy-and-guidelines/policy/position-statements/medical-marijuana/> (2018).
28. Abrams, D. I. & Guzman, M. Cannabis in cancer care. *Clin. Pharmacol. Ther.* **97**, 575–586 (2015).
29. Abrams, D. I. *et al.* Cannabis in painful HIV-associated sensory neuropathy: A randomized placebo-controlled trial. *Neurology* **68**, 515–521 (2007).
30. Boland, E. G., Bennett, M. I., Allgar, V. & Boland, J. W. Cannabinoids for adult cancer-related pain: systematic review and meta-analysis. *BMJ Support. Palliat. Care* **10**, 14–24 (2020).
31. Mischley, L. Cannabis Use Survey. Bastyr University. https://redcap.bastyr.edu/redcap/surveys/?s=aZ6iQG#_ga=2.53678060.576559250.1574265964-1889759567.1574265964 (2020).
32. Centers for Disease Control and Prevention (CDC). *Behavioral Risk Factor Surveillance System Survey Questionnaire*. U.S. Department of Health and Human Services, Centers for Disease Control and Prevention. (2019).

33. Hughes, J., Camden, A. & Yangchen, T. Rethinking and Updating Demographic Questions: Guidance to Improve Descriptions of Research Samples. *Psi Chi J. Psychol. Res.* **21**, 138–151 (2016).
34. Sexton, M., Cuttler, C., Finnell, J. & Mischley, L. A Cross-Sectional Survey of Medical Cannabis Users: Patterns of Use and Perceived Efficacy. *Cannabis Cannabinoid Res.* **1**, 131–138 (2016).
35. Cuttler, C. & Spradlin, A. Measuring cannabis consumption: Psychometric properties of the Daily Sessions, Frequency, Age of Onset, and Quantity of Cannabis Use Inventory (DFAQ-CU). *PLOS ONE* **12**, e0178194 (2017).
36. Pa, H. *et al.* Research Electronic Data Capture (REDCap)--a Metadata-Driven Methodology and Workflow Process for Providing Translational Research Informatics Support. *J. Biomed. Inform.* **42**, 377–381 (2009).
37. Harris, P. *et al.* The REDCap Consortium: Building an International Community of Software Platform Partners. *J. Biomed. Inform.* **95**, 103208 (2019).
38. R. Core Team. R: A language and environment for statistical computing. (2013).

Table 1: Characteristics of the Study Population

Age, mean (SD)	71.2 (8.3)
Duration of disease, mean (SD)	7.44 (6.2)
Male, <i>n</i> (%)	559 (52.5)
Female, <i>n</i> (%)	500 (47.0)
Other, <i>n</i> (%)	1 (0.1)
Prefer not to say, <i>n</i> (%)	4 (0.4)
Race	
White, <i>n</i> (%)	977 (91.8)
Hispanic, <i>n</i> (%)	25 (2.3)
African American, <i>n</i> (%)	16 (1.5)
Asian, <i>n</i> (%)	11 (1.0)
American Indian or Alaska Native, <i>n</i> (%)	3 (0.3)
Mixed, <i>n</i> (%)	7 (0.7)
Some other race, ethnicity or origin, <i>n</i> (%)	5 (0.5)
Prefer not to answer, <i>n</i> (%)	20 (1.9)
Education level	
Less than high school, <i>n</i> (%)	2 (0.2)
High school, <i>n</i> (%)	81 (7.6)
Some College, <i>n</i> (%)	166 (15.6)
Trade/Technical, <i>n</i> (%)	28 (2.6)
Associate's, <i>n</i> (%)	58 (5.5)
Bachelor's, <i>n</i> (%)	331 (31.1)
Master's, <i>n</i> (%)	260 (24.4)
Professional, <i>n</i> (%)	78 (7.3)
Doctorate, <i>n</i> (%)	60 (5.6)
Income	
< \$25,000, <i>n</i> (%)	75 (7.0)
\$25,000 - \$34,999, <i>n</i> (%)	70 (6.6)
\$35,000 - \$49,999, <i>n</i> (%)	109 (10.2)
\$50,000 - \$74,999, <i>n</i> (%)	193 (18.1)
\$75,000 - \$99,999, <i>n</i> (%)	141 (13.3)
\$100,000 - \$149,999, <i>n</i> (%)	145 (13.6)
\$150,000 - \$199,999, <i>n</i> (%)	53 (5.0)
> \$200,000, <i>n</i> (%)	59 (5.5)
Prefer not to answer, <i>n</i> (%)	219 (20.6)
Marital Status	
Single, <i>n</i> (%)	44 (4.1)
Married or DP, <i>n</i> (%)	809 (76.0)
Separated, <i>n</i> (%)	6 (0.6)
Divorced, <i>n</i> (%)	123 (11.6)
Widowed, <i>n</i> (%)	82 (7.7)
Employment	
Full-Time, <i>n</i> (%)	69 (6.5)
Part-Time, <i>n</i> (%)	30 (2.8)
Self-Employed, <i>n</i> (%)	36 (3.4)
Unemployed, <i>n</i> (%)	18 (1.7)
Retired, <i>n</i> (%)	834 (78.4)
Unable to work, <i>n</i> (%)	77 (7.2)
Care Partner	
No, <i>n</i> (%)	267 (25.1)
Yes, <i>n</i> (%)	797 (74.9)
Total Participation:	1,064

Table 2: Reasons for Cannabis Use

Reason for use, <i>n</i>	261
PD medical, <i>n</i> (%)	166 (63.6)
Other medical, <i>n</i> (%)	24 (9.2)
Non-medical, <i>n</i> (%)	12 (4.6)
Both medical and non-medical, <i>n</i> (%)	56 (21.5)
Don't know, <i>n</i> (%)	3 (1.1)
PD reason for use, <i>n</i>	222
Specific PD symptoms, <i>n</i> (%)	96 (43.2)
Symptoms in general, <i>n</i> (%)	104 (46.8)
Medication side effects, <i>n</i> (%)	14 (6.3)
No reason, <i>n</i> (%)	8 (3.6)
Where respondent learned about cannabis, <i>n</i>	246
Doctor, <i>n</i> (%)	27 (11.0)
Internet/news, <i>n</i> (%)	75 (30.5)
Media/Ads, <i>n</i> (%)	19 (7.7)
PD foundation, <i>n</i> (%)	6 (2.4)
PD support groups, <i>n</i> (%)	15 (6.1)
Friends or other people with PD, <i>n</i> (%)	64 (26.0)
Family, <i>n</i> (%)	22 (8.9)
Other, <i>n</i> (%)	18 (7.3)
Recommendation from a licensed provider, <i>n</i>	246
No, <i>n</i> (%)	168 (68.3)
Yes, <i>n</i> (%)	78 (31.7)
Provided information about recommendations for use, <i>n</i>	246
No, <i>n</i> (%)	138 (56.1)
Yes, <i>n</i> (%)	108 (43.9)
Source of information about recommendations for use, <i>n</i>	108
PD provider, <i>n</i> (%)	10 (9.3)
Another licensed doctor, <i>n</i> (%)	27 (25.0)
Staff at a dispensary, <i>n</i> (%)	24 (22.2)
Friends or other people with PD, <i>n</i> (%)	24 (22.2)
Family, <i>n</i> (%)	8 (7.4)
Other, <i>n</i> (%)	15 (13.9)

Table 3: Cannabis Use Methods and Routines

Total cannabis users: 261	
Type of user	
Regular, <i>n</i> (%)	93 (35.6)
As needed, <i>n</i> (%)	168 (64.4)
Frequency of cannabis use	
Never, <i>n</i> (%)	2 (0.8)
<1 day per month, <i>n</i> (%)	62 (23.8)
1-3 days per month, <i>n</i> (%)	49 (18.8)
1-3 days per week, <i>n</i> (%)	34 (13.0)
4-6 days per week, <i>n</i> (%)	22 (8.4)
1 time per day, <i>n</i> (%)	53 (30.3)
>1 time per day, <i>n</i> (%)	39 (14.9)
Time of day for cannabis use	
Morning, <i>n</i> (%)	26 (10.0)
Afternoon, <i>n</i> (%)	18 (6.9)
Evening, <i>n</i> (%)	66 (25.3)
Bedtime, <i>n</i> (%)	69 (26.4)
Multiple times per day, <i>n</i> (%)	24 (9.2)
Random times throughout the day, <i>n</i> (%)	21 (8.0)
When symptoms appear, <i>n</i> (%)	22 (8.4)
Don't know, <i>n</i> (%)	15 (5.7)
Method of use	
Smoke it, <i>n</i> (%)	71 (27.2)
Vape it, <i>n</i> (%)	32 (12.3)
Dab it, <i>n</i> (%)	1 (0.4)
Eat or swallow it, <i>n</i> (%)	50 (19.2)
Drink it, <i>n</i> (%)	8 (3.1)
Spray or drop it, <i>n</i> (%)	76 (29.1)
Topically apply it, <i>n</i> (%)	16 (6.1)
Use it some other way, <i>n</i> (%)	6 (2.3)
Don't know, <i>n</i> (%)	1 (0.4)
Where cannabis is acquired	
Grow it, <i>n</i> (%)	0 (0.0)
Medical dispensary, <i>n</i> (%)	101 (38.7)
Recreational dispensary, <i>n</i> (%)	49 (18.8)
Underground market/dealer, <i>n</i> (%)	19 (7.3)
Home delivery, <i>n</i> (%)	28 (10.7)
Family member/friend, <i>n</i> (%)	64 (24.5)
Type of cannabis used	
High THC, <i>n</i> (%)	55 (21.1)
Low THC, <i>n</i> (%)	30 (11.5)
Pure CBD, <i>n</i> (%)	33 (12.6)
High CBD, <i>n</i> (%)	38 (14.6)
Low CBD, <i>n</i> (%)	14 (5.4)
Similar mix, <i>n</i> (%)	31 (11.9)
Other, <i>n</i> (%)	2 (0.8)
Don't know, <i>n</i> (%)	58 (22.2)

Table 4: Reported Cannabis Symptom Improvement for Top Selected Symptoms, *n* (%)

<i>Improvement to symptom severity</i>	Considerable improvement	Moderate improvement	Slight improvement	No improvement	Worsening of symptoms
Anxiety	32 (35.2)	39 (42.9)	14 (15.4)	5 (5.5)	1 (1.1)
Pain	31 (35.2)	32 (36.4)	13 (14.8)	12 (13.6)	0 (0.0)
Sleep disorders	40 (45.5)	27 (30.7)	13 (14.8)	8 (9.1)	0 (0.0)
Stiffness	22 (25.6)	33 (38.4)	21 (24.4)	8 (9.3)	2 (2.3)
Tremor	21 (25.0)	32 (38.1)	20 (23.8)	11 (13.1)	0 (0.0)
<i>Was there a meaningful change in QoL?</i>	Yes	No	Don't know		
Anxiety	77 (90.6)	1 (1.18)	7 (8.2)		
Pain	68 (89.5)	3 (4.0)	5 (6.6)		
Sleep disorders	73 (91.3)	2 (2.5)	5 (6.3)		
Stiffness	63 (82.9)	4 (5.3)	9 (11.8)		
Tremor	62 (84.9)	7 (9.6)	4 (5.5)		
<i>Improvement to symptom Frequency</i>	Considerable improvement	Moderate improvement	Slight improvement	No improvement	Worsening of symptoms
<i>Frequency n (%)</i>					
Anxiety	29 (31.9)	32 (35.2)	19 (20.9)	10 (11.0)	1 (1.1)
Pain	28 (31.8)	28 (31.8)	18 (20.5)	14 (15.9)	0 (0.0)
Sleep disorders	37 (42.0)	17 (19.3)	20 (22.7)	14 (15.9)	0 (0.0)
Stiffness	20 (23.3)	30 (34.9)	21 (24.4)	14 (16.3)	1 (1.2)
Tremor	23 (27.4)	24 (28.6)	19 (22.6)	18 (21.4)	0 (0.0)
<i>Was there a meaningful change in QoL?</i>	Yes	No	Don't know		
Anxiety	73 (91.3)	1 (1.3)	7 (7.5)		
Pain	65 (87.8)	5 (6.8)	4 (5.4)		
Sleep disorders	69 (93.2)	1 (1.4)	4 (5.4)		
Stiffness	59 (83.1)	3 (4.2)	9 (12.7)		
Tremor	62 (93.9)	2 (3.0)	2 (3.0)		

Figure 1: A Geographic representation of survey participants. Blue shading within a state depicts the percentage of respondents who were cannabis users. Montana and Maine all had 100% use from the survey participants. Rhode Island was the only state without survey respondents.

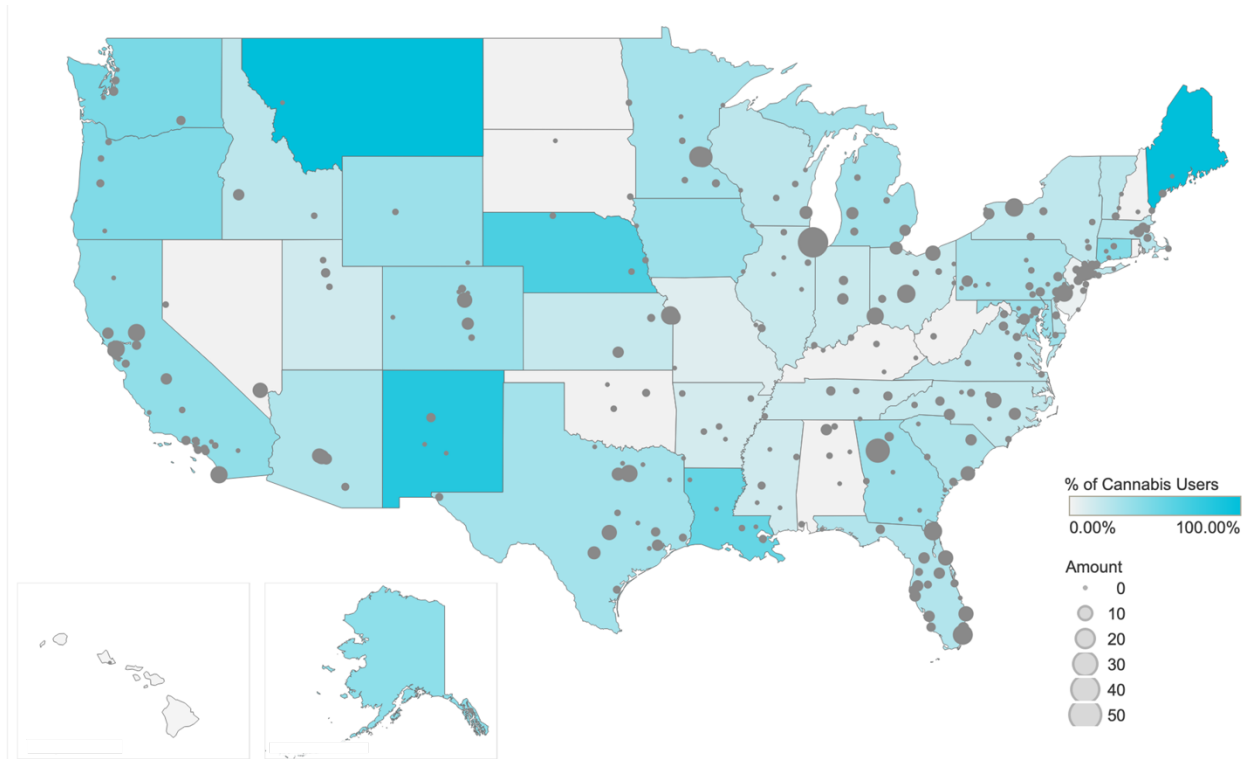


Figure 2: Primary reasons for not using cannabis in the past 6 months (n=803). Responses were either pre-identified in the survey as listed in the category labels or individuals selected “other” and their open text response was analyzed thematically.

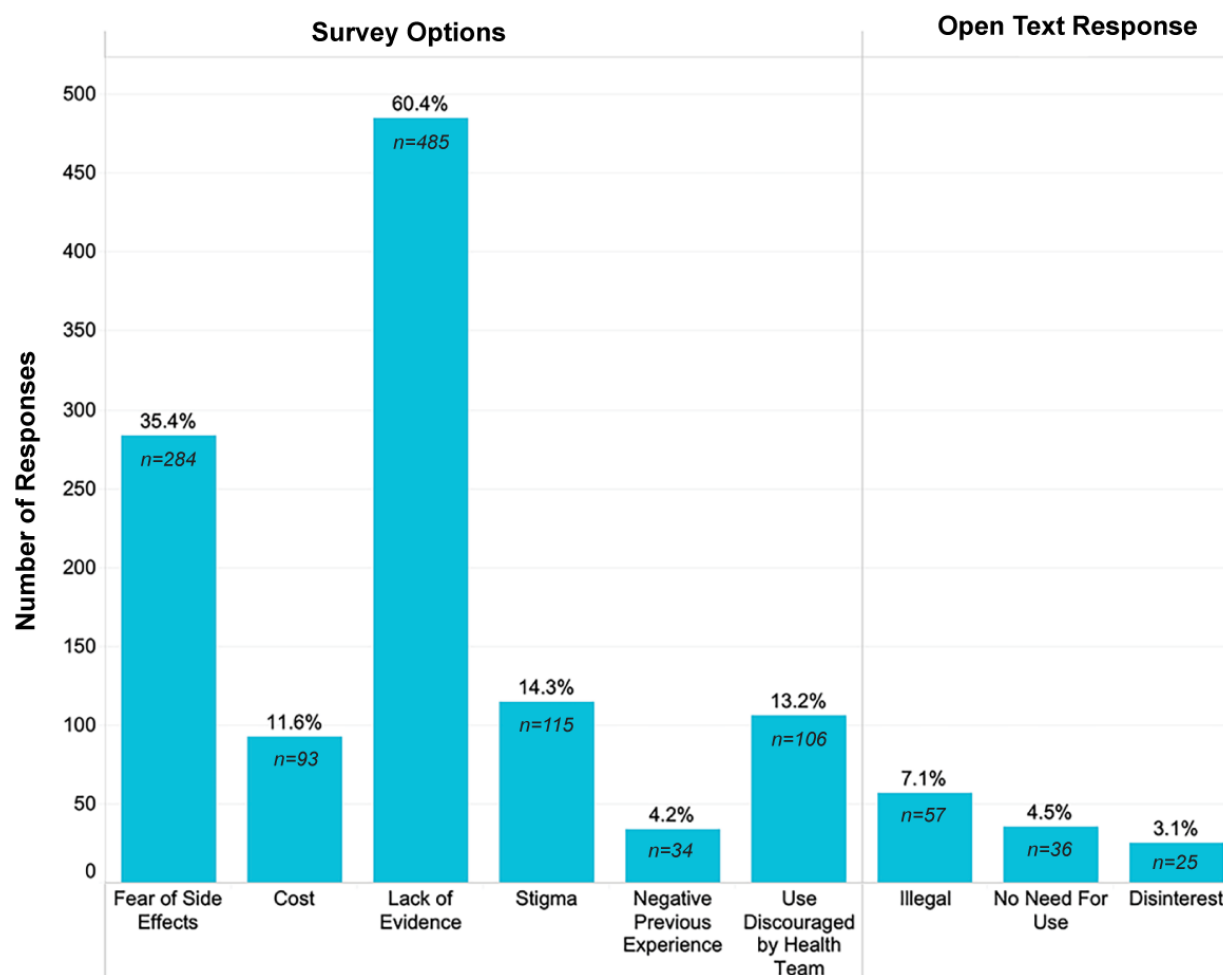


Figure 3: Cannabis use by time of day, method, source, and type. Each cannabis user was asked (A) when they used cannabis during the day, (B) the primary method by which they used cannabis, (C) where they most often acquired their supply of cannabis, and (D) the type of cannabis they used based on the concentration of the two main constituents: THC (tetrahydrocannabinol) and CBD (cannabinol). The results were further categorized by type of user (n=261 for all graphs).

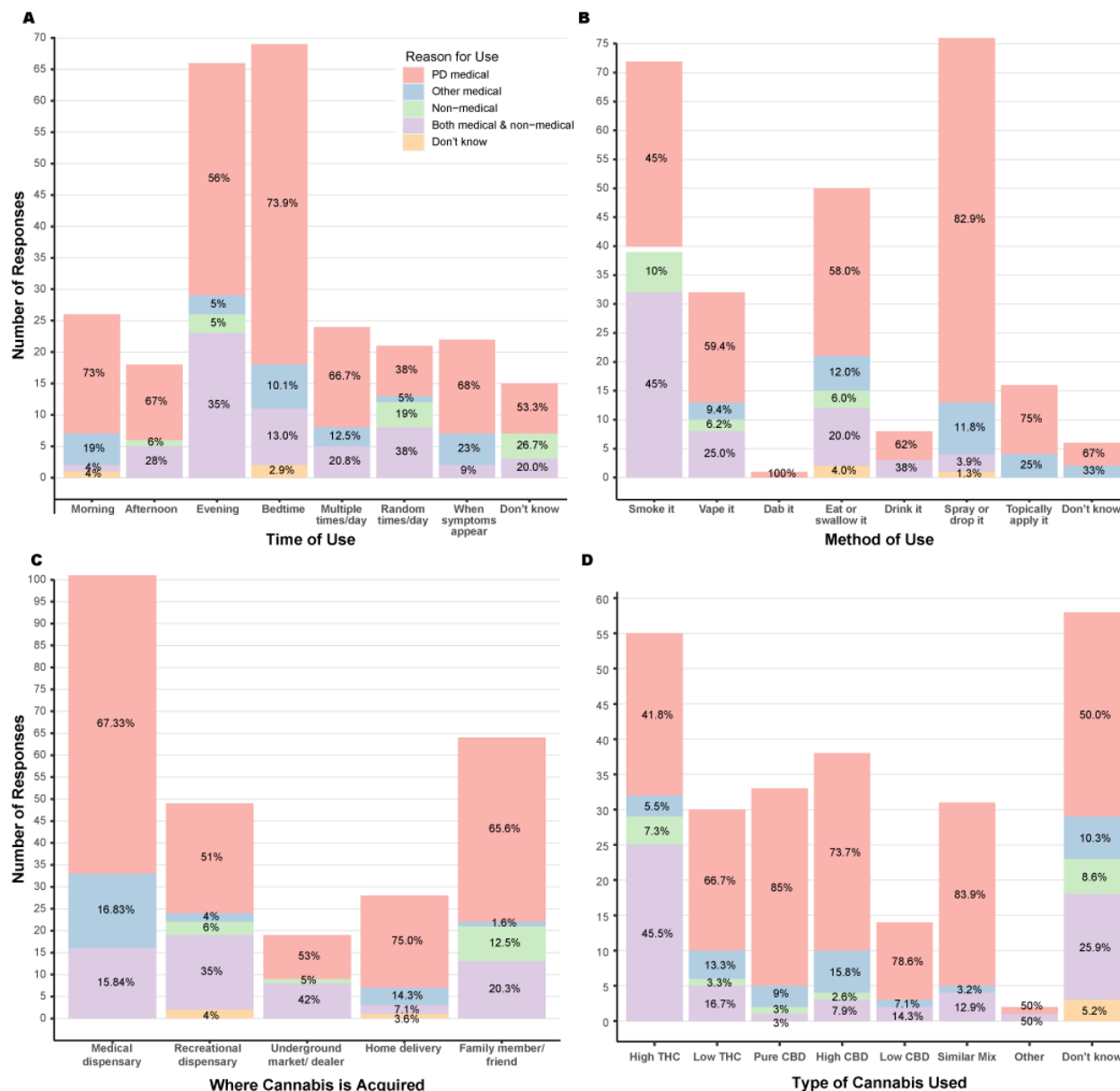


Figure 4: Cannabis use for selected PD symptoms. Each cannabis user for PD medical reasons (just PD and both PD and non-medical, n = 200) was asked, “For which of the following symptoms do you use marijuana or cannabis to improve?”

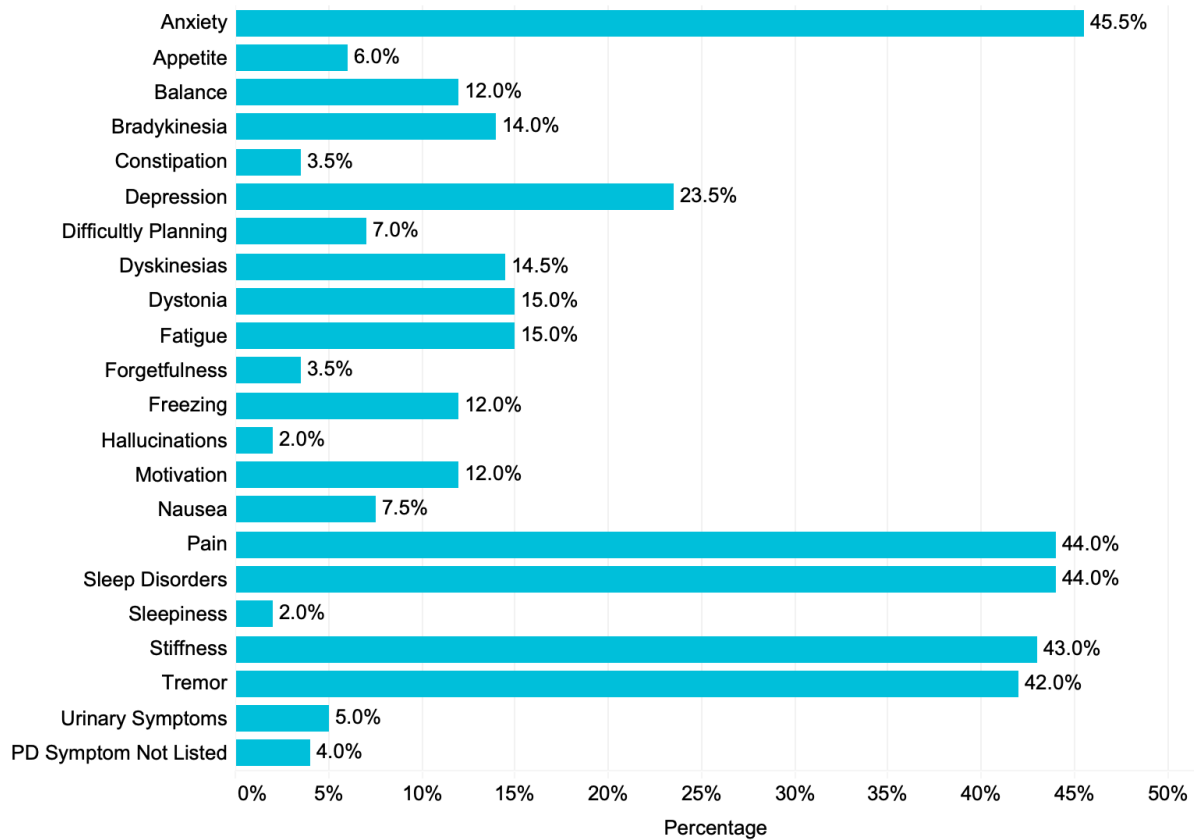
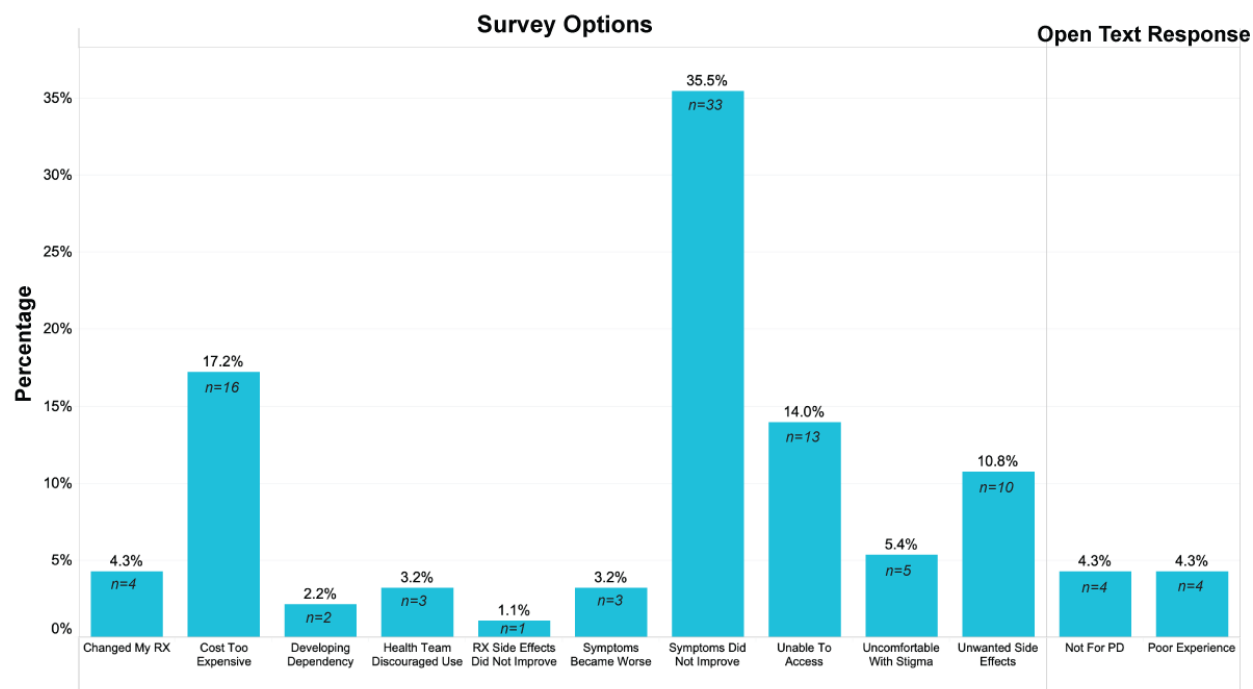


Figure 5: Reported reason for cannabis cessation. Users (n=93) responded to the survey question “For what reason did you stop using marijuana or cannabis?” Responses were either pre-identified as one of the survey options or individuals selected “other” and their open text response was analyzed thematically. Lack of symptom improvement was a key reason for halting cannabis use.



Appendix A: Parkinson's Foundation Cannabis Survey