

1 **Title: Seroprevalence of SARS-CoV-2 significantly varies with age: preliminary results from a**
2 **mass population screening**

3

4 **Authors:** Gabriele Pagani^{1,2}, Federico Conti^{1,2}, Andrea Giacomelli^{1,2}, Dario Bernacchia^{1,2}, Rossana
5 Rondanin³, Andrea Prina³, Vittore Scolari⁴, Cecilia Eugenia Gandolfi¹, Silvana Castaldi^{1,5},
6 Giuseppe Marano¹, Cosimo Ottomano⁶, Patrizia Boracchi¹, Elia Biganzoli^{1*}, Massimo Galli^{1,2*}.

7

8 **Affiliations:**

9 1: Università degli Studi di Milano, Italy

10 2: ASST FBF-Sacco, Milano, Italy

11 3: Medispa s.r.l.

12 4: Sorbonne Université, Paris, France.

13 5: Fondazione IRCCS Ca' Granda Ospedale Maggiore policlinico di Milano, Italy

14 6: Synlab s.p.a.

15 *Equally contributing Authors

16

17 **Keywords:** mass screening, seroprevalence, SARS-CoV-2, COVID-19, Italy

18

19 **Corresponding author:**

20 Gabriele Pagani

21 Infectious Diseases department, III Division

22 ASST FBF-Sacco

23 Via G.B. Grassi 74, 20157, Milano

24 gabriele.pagani@unimi.it

25 02 3904 2591

26

27 **Abstract**

28 *Objectives*

29 Castiglione D'Adda is one of the municipalities more precociously and severely affected by the
30 Severe Acute Respiratory Syndrome Coronavirus 2 (SARS-CoV-2) epidemic in Lombardy. With
31 our study we aimed to understand the diffusion of the infection by mass seroprevalence screening.

32 *Methods*

33 We searched for SARS-CoV-2 IgGs in the entire voluntary population using lateral flow immune-
34 chromatographic tests on capillary blood (rapid tests). We then performed chemiluminescent
35 serological assays (CLIA) and naso-pharyngeal swabs in a randomized representative sample of 562
36 subjects and in every subject with a positive rapid test.

37 *Results*

38 Based on CLIA serologies on the representative random sample (509 subjects), we estimated a 23%
39 IgG seroprevalence. We also found a strong correlation between age and prevalence, with the
40 elderly showing the highest probability of a positive serological test.

41 *Conclusions*

42 In an area of unrestricted viral circulation less than one-fourth of the population tested positive for
43 SARS-CoV-2 IgG. Seroprevalence increased with increasing age, possibly suggesting differences in
44 susceptibility to the infection.

45

46

47

48

49

50

51

52

53 **Text**

54 ***Introduction***

55 Coronavirus Induced Disease 2019 (COVID-19) is caused by a novel *betacoronavirus* which was
56 first identified in China and denominated SARS-CoV-2 (Severe Acute Respiratory Syndrome
57 Coronavirus 2) [1]. Italy was the first European country that suffered a wide spread of the infection,
58 which caused hundreds of thousands of cases [2].

59 The municipality of Castiglione d'Adda, a rural town of about 4550 inhabitants located South-East
60 of Milan, has been heavily affected by SARS-CoV-2 infection since the earliest stages of the
61 epidemic and subjected to movement restrictions since February 23rd, 2020. As of June 21, 2020,
62 184 confirmed cases of COVID-19 were reported, the large majority of which requiring
63 hospitalization, accounting for about 4% of the total population. At the same time, 47 deaths were
64 officially attributed to COVID-19. During the epidemic, testing was restricted to severely
65 symptomatic cases. Consequently, the true extent of the SARS-CoV-2 infection remains unknown.

66

67 ***Methods***

68 In this study, the entire population of Castiglione D'Adda was invited to perform a lateral-flow
69 immunocromatographic tests on capillary blood (Prima Lab, Switzerland) from the 18th of May to
70 the 7th of June. News about the mass screening was disseminated by the town municipality. A
71 random sample of 562 subjects (stratified per sex and age) was invited to undergo confirmatory
72 tests by chemiluminescent method on venipuncture drawn blood (CLIA, IgG anti-SARS-CoV-2,
73 Abbott, USA) and SARS-CoV-2 PCR on NPS, regardless of RICT results. More detailed
74 information about the randomization procedure and the study design are available on the complete
75 protocol, published on MedXriv pre-print server [3].

76 The analysis of IgG prevalence in the different age groups was performed by logistic regression
77 models with response variable equal to 1 for positive IgG results, and 0 for negative IgG results.
78 Age and gender were included as independent variables. Results were reported in terms of

79 estimated probabilities of being positive to IgG test as a function of age, with respective 95%
80 confidence intervals.

81

82 **Results**

83 Results presented in this paper are based on 509 people selected in the random sample who agreed
84 to undergo venipuncture to perform CLIA serologies. Characteristics of the selected population are
85 reported in Table 1A.

86 The overall seroprevalence found in the tested sample was 22.6% (95% confidence interval 17.2%-
87 29.1%). Interestingly, seroprevalence increases with increasing age (Table 1B).

88 In multivariate analyses, a significant effect of age was found ($p < 0.0001$) while no significant
89 association emerged between IgG positivity and gender ($p = 0.2560$). The possible existence of a
90 non-linear effect of age was tested by including spline polynomials, without significant results
91 ($p = 0.9078$). Furthermore, an age/gender interaction effect did not result significant ($p = 0.5199$).

92 Estimates of probabilities of being positive to IgG test, from a model including only age as
93 independent variable, are reported in Fig. 1.

94

95 **Discussion**

96 Since the early phases of the pandemic, advanced age was identified as an independent predictor for
97 severe disease and worse outcomes [4]. Beside this, it remains unclear if the limited number of
98 cases reported in children [5] is due to a milder course of disease, with a larger percentage of
99 asymptomatic cases, or to a lower susceptibility to infection, as our results seem to suggest.

100 Different ACE2 expression according to age have been postulated to explain clinical expression and
101 susceptibility to the infection. In particular, a higher expression of ACE2 in lung tissues in
102 advanced age groups had been speculated [6, 7]. Moreover, a variable susceptibility to other
103 coronavirus such as HCoV-NL63, which also use ACE2 as cell receptor in humans, in different age
104 groups, has been also reported in different age groups [8].

105 Another possible explanation may be that an asymptomatic/pauci-symptomatic infection, more
106 common in younger subjects, could elicit a less marked, or transient, antibody response, as already
107 found in the closely related Middle East Respiratory Syndrome Coronavirus (MERS-CoV) [9].

108 A possible confounding factor in our findings could be related to social distancing measures:
109 schools of any grade were among the first institutions to be closed in Italy, starting from the 5th of
110 March. This could have led to a lower exposure to the infection in children in pre-scholar and
111 scholar age groups.

112 In conclusion, our findings suggest that IgG seroprevalence for SARS-CoV-2 increases with
113 increasing age and these data suggest a lower susceptibility to infection in the lower age groups.

114 These findings have important implications in epidemiology and public health, particularly in
115 designing future population screenings, and could be an important contribution in the re-opening
116 process, especially considered that more than three-fourths of the population could be still
117 susceptible to SARS-CoV-2 infection, even in an area of initially unrestricted viral circulation.

118

119 **Conflict of interests**

120 The authors declare no conflicts of interest. All authors have seen and approved the final
121 manuscript.

122

123 **Acknowledgments**

124 MG, GP, FC, DB, AG, RR and EB defined the study protocol. RR, AP, FC, DB and GP cooperated
125 in the practical execution of the study and data gathering. GP drafted a first version of the
126 manuscript, which was then revised and integrated by MG, EB, AG, CEG and SC. CO was
127 responsible of serologies and NPSs execution. EB, PB and GM analyzed the data. All authors
128 approved the final version of the manuscript.

129 **Funding**

130 The study was funded thanks to the non-conditioning economical support from CISOM (Corpo
131 Italiano di Soccorso dell'Ordine di Malta), Banca Mediolanum, Fondazione Rava, Mylan Italia and
132 FC Internazionale Milano.

133

134 **Ethical approval**

135 The study was approved by University of Milan's Ethical Committee.

136

137

138

139

140

141

142

143

144

145

146

147

148

149

150

151

152

153

154

155

156 **References:**

- 157 [1] Zhu N, Zhang D, Wang W, et al. A Novel Coronavirus from Patients with Pneumonia in
158 China, 2019. *N Engl J Med* 2020; 382: 727–733.
- 159 [2] EpiCentro. Coronavirus | Istituto Superiore di Sanità, <https://www.epicentro.iss.it/coronavirus/>
160 (accessed 29 May 2020).
- 161 [3] Pagani G, Bernacchia D, Conti F, et al. Dynamics of the SARS-CoV-2 epidemic in the
162 earliest-affected areas in Italy: 1 Mass screening for SARS-CoV-2 serological positivity
163 (SARS-2-SCREEN). *medRxiv* 2020; 2020.06.06.20124081.
- 164 [4] Chen N, Zhou M, Dong X, et al. Epidemiological and clinical characteristics of 99 cases of
165 2019 novel coronavirus pneumonia in Wuhan, China: a descriptive study. *The Lancet* 2020;
166 395: 507–513.
- 167 [5] Lee P-I, Hu Y-L, Chen P-Y, et al. Are children less susceptible to COVID-19? *Journal of*
168 *Microbiology, Immunology and Infection* 2020; 53: 371–372.
- 169 [6] Li Y, Zhou W, Yang L, et al. Physiological and pathological regulation of ACE2, the SARS-
170 CoV-2 receptor. *Pharmacological Research* 2020; 157: 104833.
- 171 [7] Bourgonje AR, Abdulle AE, Timens W, et al. Angiotensin-converting enzyme-2 (ACE2),
172 SARS-CoV-2 and pathophysiology of coronavirus disease 2019 (COVID-19). *The Journal of*
173 *Pathology*; n/a. DOI: 10.1002/path.5471.
- 174 [8] Huang S-H, Su M-C, Tien N, et al. Epidemiology of human coronavirus NL63 infection
175 among hospitalized patients with pneumonia in Taiwan. *Journal of Microbiology, Immunology*
176 *and Infection* 2017; 50: 763–770.

177 [9] Choe PG, Perera RAPM, Park WB, et al. MERS-CoV Antibody Responses 1 Year after
178 Symptom Onset, South Korea, 2015. *Emerg Infect Dis* 2017; 23: 1079–1084.

179

180

181

182

183

184

185

186

187

188

189

190

191

192

193

194

195

196

197

198

199

200

201 **Table 1A: Characteristics of 509 subjects in the random sample**

202 Numerical variables are presented as means.

203 CAD: Coronary Artery Disease; MI: Miocardial Infarction; COPD: Chronic Obstructive Pulmonary
204 Disease;

205

	IgG negative (n=394)	IgG positive (n=115)
Gender (Female)	200 (50.8%)	49 (42.6%)
Age (years)	46.0, 20.6	55.4, 19.5
Contact with verified case	93 (23.6%)	61 (53.0%)
Smoker	92 (23.4%)	10 (8.7%)
Cardiovascular diseases		
- CAD/MI	10 (2.5%)	3 (4.3%)
- Arrhythmias	14 (3.6%)	5 (4.3%)
- Hypertension	68 (17.3%)	32 (27.8%)
- Other	14 (3.6%)	14 (12.2%)
At least one of the above:	84 (21.3%)	47 (40.9%)
Rheumatic diseases	19 (4.8%)	11 (9.6%)
Diabetes mellitus	12 (3.0%)	6 (6.2%)
Chronic Lung diseases		
- Asthma	20 (5.1%)	2 (1.7%)
- COPD	1 (0.3%)	1 (0.9%)
- Other	9 (2.3%)	4 (3.5%)
At least one of the above:	29 (7.4%)	7 (6.1%)
Oncological pathologies		
Solid Tumors	20 (5.1%)	6 (5.2%)
Oncochematological	2 (0.5%)	2 (1.7%)
At least one of the above:	22 (5.6%)	8 (7.0%)
Symptomatic		
- Fever	65 (16.5%)	66 (57.4%)
- Cough	57 (14.5%)	31 (27.0%)
- Anosmia	23 (5.8%)	37 (32.2%)
- Dysgeusia	27 (6.9%)	46 (40.0%)
- Dispnea	23 (5.8%)	13 (11.3%)
- Rush:	11 (2.8%)	4 (3.5%)
- Arthromyalgia	34 (8.6%)	36 (31.3%)
At least one of the above:	124 (31.5%)	89 (77.4%)
Other symptoms	54 (13.7%)	23 (20.0%)

206

207 **Tab.1B IgG positivity per age group**

Age (years)	Number	IgG positive
0-19	61	5 (8.19%)
20-39	111	19 (17.1%)
40-59	182	40 (22.0%)
>=60	155	51(32.9%)
TOTAL	509	115 (22.6%)

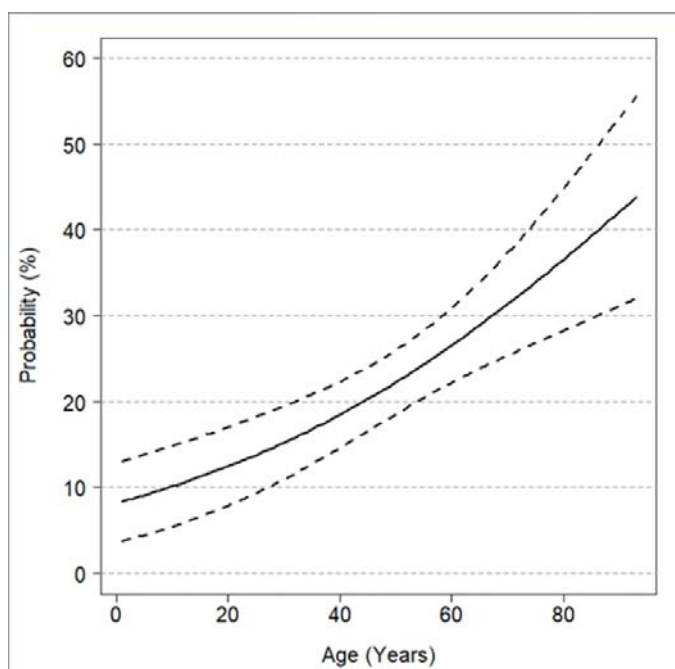
208

209

210

211 **Fig.1: Estimated probability of IgG positivity as a function of age**

212 Solid line: estimates, dashed lines: 95% confidence intervals.



213

214

215