

1 **Development of a SARS-CoV-2 total antibody assay and the dynamics of antibody**  
2 **response over time in hospitalized and non-hospitalized patients with COVID-19**

3

4 Erik H. Vogelzang [1,2],<sup>a</sup> Floris C. Loeff [3,4],<sup>a</sup> Ninotska IL Derksen [3], Simone Kruithof [3], Pleuni  
5 Ooijevaar-de Heer[3], Gerard van Mierlo [3], Federica Linty [5], Juk Yee Mok [6], Wim van Esch [6],  
6 Sanne de Bruin [7], Alexander P.J. Vlaar [7], AmsterdamUMC COVID-19 biobank study group,<sup>b</sup> Bart  
7 Seppen [1], Maureen Leeuw [1], Anne J.G. van Oudheusden [8], Anton G.M. Buiting [8], Kin Ki Jim  
8 [2,9], Hans Vrieling [10], Francis Swaneveld [10], Gestur Vidarsson [5], C. Ellen van der Schoot [5],  
9 Peter Wever [9], Wentao Li [11], Frank van Kuppeveld [11], Jean-Luc Murk [8], Berend Jan Bosch  
10 [11], Gerrit-Jan Wolbink [1,3,12], Theo Rispens [3]<sup>c</sup>

11

12 [1] Department of Rheumatology, Amsterdam Rheumatology and immunology Center | Reade, Amsterdam,  
13 the Netherlands

14 [2] Department of Medical Microbiology and Infection Control, Amsterdam UMC, location AMC, Amsterdam,  
15 the Netherlands

16 [3] Department of Immunopathology, Sanquin Research & Landsteiner Laboratory Academic Medical Centre,  
17 Amsterdam, the Netherlands

18 [4] Biologics Laboratory, Sanquin Diagnostic Services, Amsterdam, the Netherlands

19 [5] Department of Experimental Immunohematology, Sanquin Research & Landsteiner Laboratory Academic  
20 Medical Centre, Amsterdam, the Netherlands

21 [6] Sanquin Reagents, Amsterdam, the Netherlands

22 [7] Department of Intensive Care Medicine, Amsterdam UMC, Location AMC, Amsterdam, the Netherlands

23 [8] Department of Medical Microbiology and Infection Control, Jeroen Bosch Hospital, 's Hertogenbosch, the  
24 Netherlands

25 [9] Departments of Medical Microbiology, Jeroen Bosch Hospital, 's Hertogenbosch, the Netherlands

26 [10] Department of Transfusion Medicine, Sanquin Blood Bank, Amsterdam, the Netherlands

27 [11] Virology Division, Department of Infectious Diseases and Immunology, Faculty of Veterinary Medicine,  
28 Utrecht University, Utrecht, the Netherlands.

29 [12] Department of Rheumatology, Onze Lieve Vrouwe Gasthuis, Amsterdam, The Netherlands

30 a) contributed equally

31 b) see appendix for author list of the study group

32 c) corresponding author: t.rispens@sanquin.nl

33 **Abstract**

34 SARS-CoV-2 infections often cause only mild disease that may evoke relatively low  
35 antibody titers compared to patients admitted to hospitals. Generally, total antibody  
36 bridging assays combine good sensitivity with high selectivity. Therefore, we developed  
37 sensitive total antibody bridging assays for detection of SARS-CoV-2 antibodies to the  
38 receptor-binding domain (RBD) and nucleocapsid protein (NP), in addition to conventional  
39 isotype-specific assays. Antibody kinetics was assessed in PCR-confirmed hospitalized  
40 COVID-19 patients (n=41) and three populations of patients with COVID-19 symptoms not  
41 requiring hospital admission: PCR-confirmed convalescent plasmapheresis donors (n=182),  
42 PCR-confirmed hospital care workers (n=47), and a group of longitudinally sampled  
43 symptomatic individuals highly suspect of COVID-19 (n=14). In non-hospitalized patients, the  
44 antibody response to RBD is weaker but follows similar kinetics as has been observed in  
45 hospitalized patients. Across populations, the RBD bridging assay identified most patients  
46 correctly as seropositive. In 11/14 of the COVID-19-suspect cases, seroconversion in the RBD  
47 bridging assay could be demonstrated before day 12; NP antibodies emerged less  
48 consistently. Furthermore, we demonstrated the feasibility of finger prick sampling for  
49 antibody detection against SARS-CoV-2 using these assays. In conclusion, the developed  
50 bridging assays reliably detect SARS-CoV-2 antibodies in hospitalized and non-hospitalized  
51 patients, and are therefore well-suited to conduct seroprevalence studies.

52

## 53 **Introduction**

54 In December 2019, the first cases of atypical pneumonia were reported in China.[1]  
55 The causative agent was a  $\beta$ -coronavirus; now known as severe acute respiratory  
56 syndrome coronavirus 2 (SARS-CoV-2). SARS-CoV-2 is related to the human severe acute  
57 respiratory syndrome coronavirus 1 (SARS-CoV-1) and BatCoV RaTG13.[2] In the following  
58 months, an increase in reverse transcription-polymerase chain reaction (RT-PCR) confirmed  
59 cases of coronavirus infectious disease 2019 (COVID-19) were reported in various  
60 countries resulting in the World Health Organization (WHO) declaring a pandemic. RT-PCR-  
61 based diagnostics requires active virus shedding. As such, many COVID-19 patients that  
62 were not hospitalized remain undiagnosed, and the true extent of SARS-CoV-2 infections is  
63 unquestionably higher than initially reported.[3,4] This is confirmed by several  
64 seroprevalence studies that have since been conducted.[5–7] However, insight into the  
65 dynamics and variability of the antibody response in non-hospitalized patient populations,  
66 with only mild symptoms remains to be elucidated. Furthermore, the suitability of various  
67 assays to assess these – presumably partly rather weak – responses, is a point of concern.

68 The coronavirus comprises four common structural proteins; the spike (S), envelope  
69 (E), membrane (M) and nucleocapsid (N) proteins.[8,9] Previous studies on SARS-CoV-1  
70 identified the S protein as a major antigen and antibodies against the S protein were  
71 demonstrated to have neutralizing capacity.[10–14] The S protein and more specifically  
72 the receptor-binding domain (RBD) in subunit S1 in SARS-CoV-2 is reported to be an  
73 immunodominant epitope [40], and has been demonstrated to have negligible cross-  
74 reactivity with human coronaviruses HKU1, 229E, NL63 and OC43 or Middle East Respiratory  
75 Syndrome coronavirus (MERS-CoV) and only to SARS-CoV-1.[15] The N protein (NP) in SARS-  
76 CoV-1 is also immunogenic, eliciting an antibody response.[16,17]. Studies on SARS-CoV-1  
77 and SARS-CoV-2 reported that antibodies against the N protein appeared earlier than those  
78 directed at the S protein.[18–22] Furthermore, in SARS-CoV-2, immune-dominance of the N-  
79 antigen in COVID-19 patients was described.[23] Implementing validated serological assays  
80 will provide much-needed information on transmission, the ascertainment of the true  
81 infection rate, corresponding mortality and morbidity and the immune response. Also, it will  
82 allow a better understanding of the dynamics of SARS-CoV-2 in the general population.

83 Here, we describe the development of a serological bridging assay for the detection  
84 of antibodies against the RBD and NP of SARS-CoV-2. Bridging assays, or double-antigen

85 sandwich assay, have the advantage of being able to detect antibodies regardless of isotype,  
86 which potentially makes these assays maximally sensitive for seroprevalence studies. Here,  
87 we used these assays, together with isotype-specific assays, to assess the antibody response  
88 in several hospitalized and non-hospitalized COVID-19 patient populations. In particular, we  
89 describe the early antibody response to SARS-CoV-2 in non-hospitalized individuals highly  
90 suspect of COVID-19, during the symptomatic stages of disease.

91

## 92 **Materials and Methods**

### 93 *Samples and patients*

94 Serum or plasma samples obtained from RT-PCR positive SARS-CoV-2 hospitalized  
95 and non-hospitalized recovered adult patients (n=182) who underwent plasmapheresis  
96 at Sanquin, the national blood bank, Amsterdam, the Netherlands were included.

97 Also, serum samples from hospitalized SARS-CoV-2 RT-PCR confirmed patients  
98 (n=41) at the Jeroen Bosch Hospital, Den Bosch, the Netherlands and Amsterdam University  
99 Medical Centre, Location AMC, Amsterdam, the Netherlands were included.

100 From the Elisabeth-TweeSteden Hospital, Tilburg, the Netherlands serum samples of  
101 SARS-CoV-2 RT-PCR confirmed healthcare workers (HCWs) were obtained (n=47) at various  
102 time points. None of the HCWs were admitted to the hospital for COVID-19.

103 From the Amsterdam Rheumatology and immunology Centre, location Reade, The  
104 Netherlands, serum samples were obtained at regular intervals in a group of otherwise  
105 healthy volunteers which based on recent travel to an endemic area abroad were highly  
106 suspect for COVID-19 (n=7) and household contacts (n=2) of this group that did not go  
107 abroad. Moreover, serum samples were collected from a SARS-CoV-2 RT-PCR positive  
108 volunteer and close contacts, all with no comorbidities. (n=5). All 14 volunteers had  
109 symptoms not requiring hospital admission. Samples were collected at regular intervals  
110 after the onset of potential COVID-19 disease symptoms. The average age of participants  
111 was 31 years (SD 4.2), 7 (50%) were female and none reported relevant comorbidities.

112 Negative control serum samples were included from healthy blood donors collected  
113 by Sanquin (n=307). The negative control samples had been collected from the Dutch  
114 population before mid-January 2020, thus prior to the first reported SARS-CoV-2 case in the  
115 Netherlands (27 February 2020).

116 This study has been conducted in accordance with the ethical principles set out in  
117 the declaration of Helsinki and all participants provided written informed consent, if  
118 applicable. Approval was obtained from the Medical Ethics Committees from the Academic  
119 Medical Center, VU University Medical Center and Elisabeth-TweeSteden Hospital.

120

#### 121 *Development of SARS-CoV-2 RBD and NP based bridging assays*

122 The RBD-mFc and RBD-ST proteins were produced as described by Okba et al.[15]  
123 The NP was produced in HEK cells with HAVT20 leader peptide, 10xhis-tag and a BirA-tag as  
124 described by Dekkers et al.[24] MaxiSORP microtiter plates (ThermoFisherScientific, US)  
125 were coated with 100  $\mu$ L per well 0.125  $\mu$ g/mL RBD-mFc or NP in PBS overnight  
126 at 4°C. Plates were washed five times with PBS supplemented with 0.02% polysorbate-20  
127 (PBS-T). Samples were diluted 10-fold in PBS-T supplemented with 0.3% gelatin (PTG) and  
128 incubated on the plate (100  $\mu$ L) for 1h at room temperature (RT) while shaking. After  
129 washing five times with PBS-T, 100  $\mu$ L per well biotinylated RBD-ST (EZ-Link Sulfo-NHS-LC-  
130 Biotin, Thermo Fisher) or biotinylated NP (via the BirA tag as described in [24]) was added at  
131 0.5  $\mu$ g/mL or 0.015  $\mu$ g/mL, respectively, in PTG and incubated for 1h at RT, followed by  
132 incubation for 30 minutes with streptavidin-poly-HRP (Sanquin). Plates were washed five  
133 times with PBS-T, and 100  $\mu$ L of TMB substrate (100  $\mu$ g/mL) and 0.003% (v/v) hydrogen  
134 peroxide (Merck, Germany) in 0.11 M sodium acetate buffer (pH 5.5) was added to each  
135 well. A total of 100  $\mu$ L of 0.2 M H<sub>2</sub>SO<sub>4</sub> (Merck, Germany) was added to stop the reaction.  
136 Absorbance was measured at 450 nm and 540 nm. The difference was used to evaluate  
137 antibody binding. OD values were normalized to readings of a reference serum pool that  
138 was included on each plate and reported as nOD.

139

#### 140 *SARS-CoV-2 RBD and NP isotype-specific assays*

141 MaxiSORP microtiter plates were coated with 1.0  $\mu$ g/mL RBD-ST or NP, or 4.0  $\mu$ g/mL  
142 monoclonal mouse antihuman IgM (MH15, Sanquin, the Netherlands) in PBS overnight at  
143 4°C. Following washing with PBS-T, samples were diluted 100-fold/200-fold in PTG and  
144 incubated for 1h at RT. After washing, 0.5  $\mu$ g/mL HRP-conjugated monoclonal mouse  
145 antihuman IgG (MH16, Sanquin) or antihuman IgA (MH14, Sanquin) was added, diluted in  
146 PTG and incubated for 1h. Following enzymatic conversion of TMB substrate, absorbance  
147 was measured at 450 nm and 540 nm and the difference used to evaluate antibody binding

148 as described above. For IgM, the assay was finished using biotinylated RBD-ST as described  
149 above for the bridging assay.

150

#### 151 *Data processing and analysis*

152 Statistical analysis were carried out using Graphpad Prism 7.

153

## 154 **Results**

### 155 *Total antibody assays*

156 Total antibody bridging assays depend on the multivalency of antibodies of any  
157 isotype to generate a bridge between antigen for capture as well as detection. Therefore,  
158 antigen coating density is generally a critical parameter. We set up bridging assays for RBD  
159 and NP antigens and optimized antigen coating density to obtain optimal differentiation  
160 between specific and non-specific signals using a small set of sera from COVID-19 patients  
161 and pre-outbreak healthy donors (HD), see Figure S1. A good reproducibility between runs  
162 was observed (Figure S1). After an initial evaluation of 80 pre-outbreak samples, we arrived  
163 at a cut-off value of 0.1 nOD, anticipated to provide ca. 99% specificity. Subsequent samples  
164 were measured, retested if initially positive ( $>0.1$  nOD), and only considered positive if the  
165 repeated measurement was also  $>0.1$  nOD. Analogously, a cut-off value of 0.14 nOD was set  
166 for the NP bridging assay.

167

### 168 *Seroprevalence in different study populations*

169 We assessed seroprevalence with the RBD bridging assay (RBD-Ab) and NP bridging assay  
170 (NP-Ab) in several different study populations of PCR-confirmed COVID-19 patients as well  
171 as pre-outbreak HD. Only two (0.7%) positive samples were detected in pre-outbreak HD  
172 (n=307) using the RBD-Ab, whereas seven (2.5%) positive samples were detected using the  
173 NP-Ab (Figure 1). In 40 out of 41 (97.5%) and 39 out of 41 (95.1%) hospitalized patients with  
174 active, RT-PCR confirmed COVID-19 we detected antibodies against the RBD or NP,  
175 respectively. In PCR-confirmed non-hospitalized convalescent HCW's (n=47) antibodies  
176 against RBD or NP were detected in 45 (95.7%) and 39 (83.0%) samples, respectively.  
177 Antibodies against RBD were detected in 180 (98.9%) and for the NP in 175 (96.2%) of PCR-  
178 confirmed convalescent plasmaphereses donors (n=182), which consists both of patients  
179 with and without prior hospitalization due to COVID-19. In all but one case, samples

180 negative in the RBD-Ab assay were also negative in the NP-Ab assay (Figure 4). The above-  
181 described seroprevalences demonstrated a good overall sensitivity and specificity of the  
182 RBD-Ab (98.1% and 99.3%), and somewhat less for the NP-Ab (93.7% and 97.5%).

183

#### 184 *Antibody response at different time points*

185 To study the effect of time on the seroprevalence and antibody levels determined by using  
186 the RBD-Ab and the NP-Ab, we stratified the samples of the non-hospitalized cases  
187 (plasmapheresis donors and HCWs) for different days since symptom onset (information  
188 available for n=167; Figure 2). As comparison, in addition to the hospitalized patients with  
189 active disease (approx. 8 – 23 day post symptom onset), convalescent cases that were  
190 previously admitted to the hospital are also included (n = 27; approx. 20 – 66 post symptom  
191 onset). There is an increase in nOD over time for the RBD-Ab in hospitalized cases and a  
192 similar, non-significant trend in non-hospitalized cases. However, there is no apparent effect  
193 of time after onset of symptoms on the detection of antibodies in the RBD-Ab or NP-Ab  
194 assay.

195 To obtain insight into the dynamics of the different isotypes, we also measured  
196 antibodies using assays for the detection of IgM, IgG, and IgA (Figure 2). For the antibody  
197 response to the RBD, there is a (non-significant) trend towards declining IgM and IgA levels  
198 as time progresses in both hospitalized and non-hospitalized patients. Hospitalized patients  
199 have significantly higher IgG levels later in time. In non-hospitalized patients, the IgG  
200 response rises slowly over time and gains prominence relative to other isotypes at later time  
201 points (Figure S2), in line with expectations. At least up to 60 days after symptom onset  
202 substantial amounts of IgG to the RBD can be detected in this population. In comparison to  
203 hospitalized convalescent patients, the IgG response in non-hospitalized patients is  
204 significantly weaker, as shown in Figure 2. A similarly weaker IgG response is also observed  
205 against the NP.

206

#### 207 *Antibody kinetics in non-hospitalized patients at early time points*

208 To obtain a better insight into the antibody response against SARS-CoV-2 and thus the  
209 seroprevalence in a in specific population, we tested sequentially collected sera from a  
210 group of non-hospitalized and otherwise healthy individuals who were highly suspected of  
211 having contracted COVID-19 (Reade patient cohort; Figure 3). Day 3 post symptom onset

212 samples were available for two individuals and were negative in both the bridging assays as  
213 well as in the IgM, IgG, and IgA assays. Within 12 days post symptom onset, antibodies  
214 against the RBD were detected in 11 out of 14 (78.6%) patients as compared to 8 out of 14  
215 (53.1%) against NP antibodies, as shown in Figure 3, using the bridging assays. At day 60,  
216 one of the previously negative samples became positive in both bridging assays.

217 Figure 3 shows the antibody kinetics for IgM, IgG and IgA. Most patients (n=9)  
218 seroconverted for IgG within 15 days post symptom onset, although three patients  
219 seroconverted later. The slow appearance of IgG antibodies to RBD is clearly seen in this  
220 population. Interestingly, at two months, IgG anti-RBD appears to be declining again,  
221 suggesting a lack of sustained overall anti-RBD response in this group of patients. The  
222 antibody response to NP is not detectable in most patients around day 10 both in the NP-Ab  
223 and NP-IgG assays, and remains weak in many patients at later time points.

224

#### 225 *Comparison of assay formats*

226 The RBD-Ab assay identifies positive patients most reliably, with few false-positive cases.  
227 Sensitivity and/or specificity could theoretically be enhanced by combining two or more  
228 assays. When comparing the RBD-Ab with the NP-Ab assay, we observe that for HD, none of  
229 the samples were positive in both assays as shown in Figure 4. Requiring both assays to be  
230 positive would therefore result in enhanced specificity, albeit with reduced sensitivity. Also,  
231 for the RBD-IgG assay it appears that negative control samples either have elevated signals  
232 in either this assay or the RBD-Ab, but not both (Figure 5). There is a moderately strong  
233 correlation between RBD-Ab and RBD-IgG (Spearman  $r = 0.69$ ,  $p < 0.0001$ ) across the  
234 populations; whereas the correlation between RBD-Ab and NP-Ab is moderate ( $r = 0.58$ ,  
235  $p < 0.0001$ ).

236

#### 237 *Finger prick sampling*

238 A relatively low volume of serum is needed for the developed assay to assess the  
239 antibody response, therefore making it well suited for finger prick sampling. A small number  
240 of samples (n = 11) was obtained by finger prick sampling, rather than obtained by  
241 venipuncture. Antibodies were detected by the RBD-Ab assay and compared to a matching  
242 venipuncture draw (Figure 6). The results suggest that a finger prick is an equivalent method  
243 for drawing blood when using this assay to detect antibodies against the RBD.



244 **Discussion**

245 In this study, we describe the development of sensitive serological bridging assays  
246 based on the RBD and NP to detect antibodies against SARS-CoV-2. Assay performance was  
247 evaluated in serum samples of different patient populations (hospitalized and non-  
248 hospitalized) and the RBD bridging assay was found to best discriminate between cases and  
249 pre-outbreak controls across different time points, especially in individuals with COVID-19  
250 symptoms who did not require hospital admission. We also show the early antibody kinetics  
251 in a group of non-hospitalized individuals, highly suspected of having contacted COVID-19,  
252 during their symptomatic phase. Finally, we demonstrate the feasibility of using finger prick  
253 sampling for the detection of antibodies against SARS-CoV-2.

254 In recent studies, seroconversion of SARS-CoV-2 infected hospitalized  
255 patients usually occurred between 5-14 days.[15,20,21,25,26] Our study demonstrated a  
256 similar result in non-hospitalized patients. Since an adequate antibody response requires  
257 time to develop, false-negative results will occur depending on the timing of sampling  
258 independent of the type of assay used, thereby influencing seroprevalence study results. In  
259 one patient followed over time, seroconversion occurred after day 15. Although this patient  
260 went to work (not healthcare related) and did groceries, other public measures regarding  
261 SARS-CoV-2 were followed, and this is probably a late seroconversion.

262 In the non-hospitalized patients, the isotype-specific antibody response to RBD  
263 follows a pattern similar to hospitalized patients [41], with a relatively late appearance of  
264 IgG antibodies. Although the IgG levels are significantly lower in the non-hospitalized  
265 population, these antibodies nevertheless are present in readily detectable amounts up to  
266 60 days after symptom onset. The long-term persistence of these responses remains to be  
267 investigated.

268 Bridging assay, or homologous double-antigen sandwich immunoassays have found  
269 firm ground in the assessment of (weak) immune responses against biopharmaceutical  
270 drugs [27,28], but are as yet relatively uncommon for measurement of antibodies to viral  
271 antigens. Nevertheless, a commercially available assay using a similar format for SARS-CoV-2  
272 has been described.[29] Advantages of this assay type include the ability to detect  
273 antibodies of any isotype (with the exception of IgG4 [30], which is unlikely to be of  
274 relevance in the context of an antiviral immune response) and a generally low background.  
275 Disadvantages include the lower responsiveness to low-affinity antibodies. In general, the

276 assay described here is robust in detecting SARS-CoV-2 antibodies in patients with  
277 symptoms not requiring hospital admittance. This will aid in determining the true  
278 prevalence of COVID-19. The use of this developed assay could, therefore, lead to a better  
279 understanding of the dynamics of SARS-CoV-2 infections in the population since it is  
280 assumed that a large proportion of COVID-19 patients have mild symptoms and are not  
281 hospitalized.

282 In prior publications, mainly in hospitalized patients, the antibody response against  
283 the NP appeared earlier than that against the S protein. [18–23] Similarly, a study in SARS-  
284 CoV-1 described that the IgG immune response is more frequently directed against the NP  
285 compared to the S protein.[31] Moreover, in a SARS-CoV-2 study, it was found that most ICU  
286 patients had a higher N-IgG than S-IgG titer compared to non-ICU hospitalized patients.[32]  
287 Other studies demonstrated or suggested an association between disease severity and level  
288 and/or longevity of the antibody response for SARS-CoV-2 and MERS-CoV.[15,33–35] Our  
289 results suggest that the antibody response against the NP of SARS-CoV-2 needs more time  
290 to develop compared to the antibody response against the RBD in patients with mild  
291 symptoms, and is overall more variable. Our finding regarding the NP may, therefore, be  
292 (partially) based on the difference in immune response based on disease severity (e.g.  
293 hospitalized and non-hospitalized). However, the discrepancy between our finding and that  
294 of previous research needs to be confirmed in a larger sample size, since other factors such  
295 as the timing of samples and difference between assay types can also influence this.

296 Since different samples were positive in the RBD-Ab and NP-Ab assays in our healthy  
297 donors, there is a rationale for performing both assays to eliminate false positives. This will  
298 however result in a somewhat diminished sensitivity. A similar pattern is seen for the RBD-  
299 Ab assay compared to the RBD-IgG assay. In another study, combining different antigens has  
300 also been proposed to optimize the sensitivity and specificity of a SARS-CoV-2 serological  
301 assay.[23] Two-tier testing strategies are regularly implemented for other infectious  
302 diseases such as Lyme disease or syphilis.

303 In a recent study describing a SARS-CoV-2 transmission model a range of  
304 transmission scenarios were examined and it was suggested that: “serological testing is  
305 required to understand the extent and duration of immunity to SARS-CoV-2 which will help  
306 determine the post-pandemic dynamics of the virus.”.[36] Determining the true extent of  
307 the total incidence of SARS-CoV-2 by serological testing will optimize these transmission

308 models and could aid in determining which public health measures are needed and their  
309 timing to maintain control of the SARS-CoV-2 pandemic. To assess this during periods of  
310 widespread transmission and when non-essential travel is prohibited, we developed a  
311 reliable serological assay which needs a low volume of serum and is therefore well suited to  
312 use for blood obtained by finger prick.

313         There are some limitations to this study. Further investigation of cross-reactivity  
314 for the different coronaviruses may be necessary since the RBD of SARS-CoV-2 may show  
315 cross-reactivity with other human coronaviruses (HCoV), and in particular SARS-CoV-1.  
316 However, we anticipate that this will not alter our findings due to the limited number of  
317 cases with SARS-CoV-1 in Europe. [37] By including a large population of healthy controls  
318 the risk of having missed substantial cross-reactivity against other HCoV is also limited;  
319 especially since antibodies against HCoV are detected in the majority of the population  
320 (>90% for all four HCoV).[38,39]

321         Furthermore, although this study provides an insight into the antibody response in  
322 the early phase of infection in non-hospitalized patients, the number of cases is still modest.  
323 Our study describes the early antibody kinetics in a population based on probable exposure  
324 and not based on symptoms or hospitalized patients who are RT-PCR positive. Yet, this  
325 provides an unbiased view of the performance of the developed serological assay and the  
326 antibody response in patients with mild SARS-CoV-2 infection.

327         In summary, this study demonstrates the use of a sensitive bridging assay to study  
328 seroprevalence in non-hospitalized COVID-19 patients, and provides insight into the early  
329 kinetics of the antibody response to SARS-CoV-2 in this population.

330

### 331 **Author contributions**

332 GW, TR conceived of the study, EHV, FCL, BS, BJB, GW, TR were involved in study design and  
333 organization, NILD, SK, POH, GvM, FL, JYM, WL conducted experiments, EHV, FCL, TR  
334 analyzed data, EHV, FCL, GV, GW, TR wrote the paper, TR supervised the study, all authors  
335 provided critical revision of the paper.

336 **References**

- 337 1 Zhu N, Zhang D, Wang W, *et al.* A Novel Coronavirus from Patients with Pneumonia in  
338 China, 2019. *N Engl J Med* 2020;**382**:727–33. doi:10.1056/NEJMoa2001017
- 339 2 Zhou P, Yang X-L, Wang X-G, *et al.* A pneumonia outbreak associated with a new  
340 coronavirus of probable bat origin. *Nature* 2020;**579**:270–3. doi:10.1038/s41586-020-  
341 2012-7
- 342 3 Li R, Pei S, Chen B, *et al.* Substantial undocumented infection facilitates the rapid  
343 dissemination of novel coronavirus (SARS-CoV-2). *Science (80- )* 2020;**368**:489 LP-493.  
344 doi:10.1126/science.abb3221
- 345 4 Wu JT, Leung K, Bushman M, *et al.* Estimating clinical severity of COVID-19 from the  
346 transmission dynamics in Wuhan, China. *Nat Med* 2020;**26**:506–10.  
347 doi:10.1038/s41591-020-0822-7
- 348 5 To KK-W, Cheng VC-C, Cai J-P, *et al.* Seroprevalence of SARS-CoV-2 in Hong Kong and  
349 in residents evacuated from Hubei province, China: a multicohort study. *The Lancet*  
350 *Microbe* 2020;**0**. doi:10.1016/S2666-5247(20)30053-7
- 351 6 Slot E, Hogema B, Reusken C, *et al.* Herd immunity is not a realistic exit strategy  
352 during a COVID-19 outbreak. 2020. doi:10.21203/rs.3.rs-25862/v1
- 353 7 Sood N, Simon P, Ebner P, *et al.* Seroprevalence of SARS-CoV-2–Specific Antibodies  
354 Among Adults in Los Angeles County, California, on April 10-11, 2020. *JAMA* Published  
355 Online First: 18 May 2020. doi:10.1001/jama.2020.8279
- 356 8 Fehr AR, Perlman S. Coronaviruses: an overview of their replication and pathogenesis.  
357 *Methods Mol Biol* 2015;**1282**:1–23. doi:10.1007/978-1-4939-2438-7\_1
- 358 9 Rota PA, Oberste MS, Monroe SS, *et al.* Characterization of a Novel Coronavirus  
359 Associated with Severe Acute Respiratory Syndrome. *Science (80- )* 2003;**300**:1394 LP-  
360 1399. doi:10.1126/science.1085952
- 361 10 Berry JD, Jones S, Drebot MA, *et al.* Development and characterisation of neutralising  
362 monoclonal antibody to the SARS-coronavirus. *J Virol Methods* 2004;**120**:87–96.  
363 doi:10.1016/J.JVIROMET.2004.04.009
- 364 11 Traggiai E, Becker S, Subbarao K, *et al.* An efficient method to make human  
365 monoclonal antibodies from memory B cells: potent neutralization of SARS  
366 coronavirus. *Nat Med* 2004;**10**:871–5. doi:10.1038/nm1080
- 367 12 Sui J, Li W, Murakami A, *et al.* Potent neutralization of severe acute respiratory

- 368 syndrome (SARS) coronavirus by a human mAb to S1 protein that blocks receptor  
369 association. *Proc Natl Acad Sci* 2004;**101**:2536–41. doi:10.1073/PNAS.0307140101
- 370 13 Hofmann H, Hattermann K, Marzi A, *et al.* S Protein of Severe Acute Respiratory  
371 Syndrome-Associated Coronavirus Mediates Entry into Hepatoma Cell Lines and Is  
372 Targeted by Neutralizing Antibodies in Infected Patients. *J Virol* 2004;**78**:6134 LP-  
373 6142. doi:10.1128/JVI.78.12.6134-6142.2004
- 374 14 Buchholz UJ, Bukreyev A, Yang L, *et al.* Contributions of the structural proteins of  
375 severe acute respiratory syndrome coronavirus to protective immunity. *Proc Natl*  
376 *Acad Sci U S A* 2004;**101**:9804 LP-9809. doi:10.1073/pnas.0403492101
- 377 15 Okba NMA, Muller MA, Li W, *et al.* Severe Acute Respiratory Syndrome Coronavirus  
378 2-Specific Antibody Responses in Coronavirus Disease 2019 Patients. *Emerg Infect Dis*  
379 2020;**26**. doi:10.3201/eid2607.200841
- 380 16 Chen Z, Pei D, Jiang L, *et al.* Antigenicity analysis of different regions of the severe  
381 acute respiratory syndrome coronavirus nucleocapsid protein. *Clin Chem*  
382 2004;**50**:988–95. doi:10.1373/clinchem.2004.031096
- 383 17 Qiu M, Shi Y, Guo Z, *et al.* Antibody responses to individual proteins of SARS  
384 coronavirus and their neutralization activities. *Microbes Infect* 2005;**7**:882–9.  
385 doi:10.1016/j.micinf.2005.02.006
- 386 18 Tan Y-J, Goh P-Y, Fielding BC, *et al.* Profiles of antibody responses against severe  
387 acute respiratory syndrome coronavirus recombinant proteins and their potential use  
388 as diagnostic markers. *Clin Diagn Lab Immunol* 2004;**11**:362–71.  
389 doi:10.1128/cdli.11.2.362-371.2004
- 390 19 Woo PCY, Lau SKP, Wong BHL, *et al.* Differential sensitivities of severe acute  
391 respiratory syndrome (SARS) coronavirus spike polypeptide enzyme-linked  
392 immunosorbent assay (ELISA) and SARS coronavirus nucleocapsid protein ELISA for  
393 serodiagnosis of SARS coronavirus pneumonia. *J Clin Microbiol* 2005;**43**:3054–8.  
394 doi:10.1128/JCM.43.7.3054-3058.2005
- 395 20 Zhao J, Yuan Q, Wang H, *et al.* Antibody responses to SARS-CoV-2 in patients of novel  
396 coronavirus disease 2019. *Clin Infect Dis* Published Online First: March 2020.  
397 doi:10.1093/cid/ciaa344
- 398 21 Guo L, Ren L, Yang S, *et al.* Profiling Early Humoral Response to Diagnose Novel  
399 Coronavirus Disease (COVID-19). *Clin Infect Dis an Off Publ Infect Dis Soc Am*

400 Published Online First: March 2020. doi:10.1093/cid/ciaa310

401 22 Grzelak L, Temmam S, Planchais C, *et al.* SARS-CoV-2 serological analysis of COVID-19  
402 hospitalized patients, pauci-symptomatic individuals and blood donors. *medRxiv*  
403 2020;:2020.04.21.20068858. doi:10.1101/2020.04.21.20068858

404 23 Hachim A, Kavian N, Cohen CA, *et al.* Beyond the Spike: identification of viral targets  
405 of the antibody response to SARS-CoV-2 in COVID-19 patients. *medRxiv*  
406 2020;:2020.04.30.20085670. doi:10.1101/2020.04.30.20085670

407 24 Dekkers G, Treffers L, Plomp R, *et al.* Decoding the Human Immunoglobulin G-Glycan  
408 Repertoire Reveals a Spectrum of Fc-Receptor- and Complement-Mediated-Effector  
409 Activities. *Front Immunol* 2017;**8**:877. doi:10.3389/fimmu.2017.00877

410 25 Wölfel R, Corman VM, Guggemos W, *et al.* Virological assessment of hospitalized  
411 patients with COVID-2019. *Nature* Published Online First: 2020. doi:10.1038/s41586-  
412 020-2196-x

413 26 To KK-W, Tsang OT-Y, Leung W-S, *et al.* Temporal profiles of viral load in posterior  
414 oropharyngeal saliva samples and serum antibody responses during infection by  
415 SARS-CoV-2: an observational cohort study. *Lancet Infect Dis* Published Online First:  
416 March 2020. doi:10.1016/S1473-3099(20)30196-1

417 27 Bloem K, Hernández-breijo B, Martínez-feito A, *et al.* Immunogenicity of Therapeutic  
418 Antibodies: Monitoring Antidrug Antibodies in a Clinical Context. *The Drug Monit*  
419 2017;**39**:327–32.

420 28 Gorovits B, Baltrukonis DJ, Bhattacharya I, *et al.* Immunoassay methods used in  
421 clinical studies for the detection of anti-drug antibodies to adalimumab and  
422 infliximab. *Clin Exp Immunol* 2018;**192**:348–65. doi:10.1111/cei.13112

423 29 Lassaunière R, Frische A, Harboe ZB, *et al.* Evaluation of nine commercial SARS-CoV-2  
424 immunoassays. *medRxiv* 2020;:2020.04.09.20056325.  
425 doi:10.1101/2020.04.09.20056325

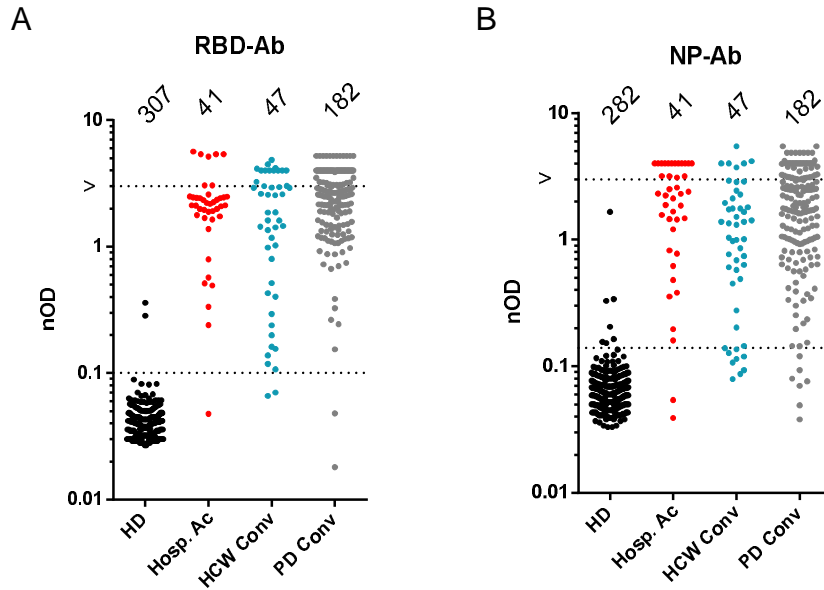
426 30 Hart MH, de Vrieze H, Wouters D, *et al.* Differential effect of drug interference in  
427 immunogenicity assays. *J Immunol Methods* 2011;**372**:196–203.  
428 doi:https://doi.org/10.1016/j.jim.2011.07.019

429 31 Leung DTM, Chi Hang TF, Chun Hung M, *et al.* Antibody Response of Patients with  
430 Severe Acute Respiratory Syndrome (SARS) Targets the Viral Nucleocapsid. *J Infect Dis*  
431 2004;**190**:379–86. doi:10.1086/422040

- 432 32 Sun B, Feng Y, Mo X, *et al.* Kinetics of SARS-CoV-2 specific IgM and IgG responses in  
433 COVID-19 patients. *Emerg Microbes Infect* 2020;:1–36.  
434 doi:10.1080/22221751.2020.1762515
- 435 33 Choe PG, Perera RAPM, Park WB, *et al.* MERS-CoV Antibody Responses 1 Year after  
436 Symptom Onset, South Korea, 2015. *Emerg Infect Dis* 2017;**23**:1079–84.  
437 doi:10.3201/eid2307.170310
- 438 34 Alshukairi AN, Khalid I, Ahmed WA, *et al.* Antibody Response and Disease Severity in  
439 Healthcare Worker MERS Survivors. *Emerg Infect Dis* 2016;**22**.  
440 doi:10.3201/eid2206.160010
- 441 35 Drosten C, Meyer B, Muller MA, *et al.* Transmission of MERS-coronavirus in  
442 household contacts. *N Engl J Med* 2014;**371**:828–35. doi:10.1056/NEJMoa1405858
- 443 36 Kissler SM, Tedijanto C, Goldstein E, *et al.* Projecting the transmission dynamics of  
444 SARS-CoV-2 through the postpandemic period. *Science (80- )* 2020;:eabb5793.  
445 doi:10.1126/science.abb5793
- 446 37 World Health Organisation. China’s latest SARS outbreak has been contained, but  
447 biosafety concerns remain – Update 7.  
448 [https://www.who.int/csr/don/2004\\_05\\_18a/en/](https://www.who.int/csr/don/2004_05_18a/en/) (accessed 15 Apr 2020).
- 449 38 Gorse GJ, Patel GB, Vitale JN, *et al.* Prevalence of Antibodies to Four Human  
450 Coronaviruses Is Lower in Nasal Secretions than in Serum. *Clin Vaccine Immunol*  
451 2010;**17**:1875 LP-1880. doi:10.1128/CVI.00278-10
- 452 39 Severance EG, Bossis I, Dickerson FB, *et al.* Development of a Nucleocapsid-Based  
453 Human Coronavirus Immunoassay and Estimates of Individuals Exposed to  
454 Coronavirus in a U.S. Metropolitan Population. *Clin Vaccine Immunol* 2008;**15**:1805  
455 LP-1810. doi:10.1128/CVI.00124-08
- 456 40 Premkumar L, Segovia-Chumbez B, Jadi R, Martinez DR, Raut R, Markmann A,  
457 Cornaby C, Bartelt L, Weiss S, Park Y, Edwards CE, Weimer E, Scherer EM, Roupheal N,  
458 Edupuganti S, Weiskopf D, Tse LV, Hou YJ, Margolis D, Sette A, Collins MH, Schmitz J,  
459 Baric RS, de Silva AM. The receptor binding domain of the viral spike protein is an  
460 immunodominant and highly specific target of antibodies in SARS-CoV-2 patients. *Sci*  
461 *Immunol.* 2020 Jun 11;5(48):eabc8413. doi: 10.1126/sciimmunol.abc8413.
- 462 [41] Sterlin D, Mathian A, Miyara M, Mohr A, Anna F, Claer L, Quentric P, Fadlallah J,  
463 Ghillani P, Gunn C, Hockett R, Mudumba S, Guihot A, Luyt C, Mayaux J, Beurton A,

464 Fourati S, Lacorte J, Yssel H, Parizot C, Dorgham K, Charneau P, Amoura Z, Gorochov G,  
465 IgA dominates the early neutralizing antibody response to SARS-CoV-2, *medRxiv.org*,  
466 *2020.06.10.20126532*  
467





468

469

470 **Figure 1.** Total antibody titers measured in different patient populations.

471 Total antibody titers against the RBD (A) and NP (B) measured in different patient

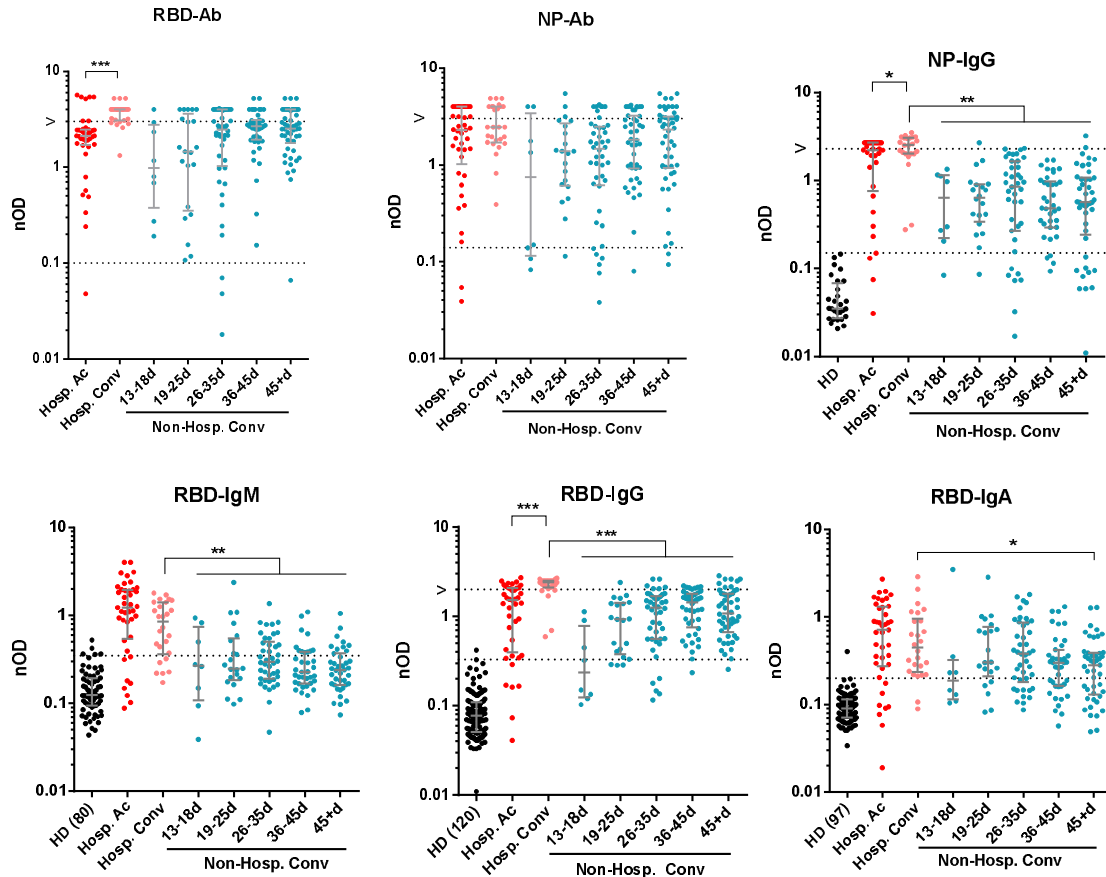
472 populations: pre-outbreak healthy donors (HD), hospitalized active-disease patients (Hosp.

473 Ac), non-hospitalized, convalescent healthcare workers (HCW Conv) and convalescent

474 plasmapheresis donors (PD Conv). Samples below the lower dotted line are considered

475 negative, whereas the upper dotted line indicates upper boundary of dynamic range.

476

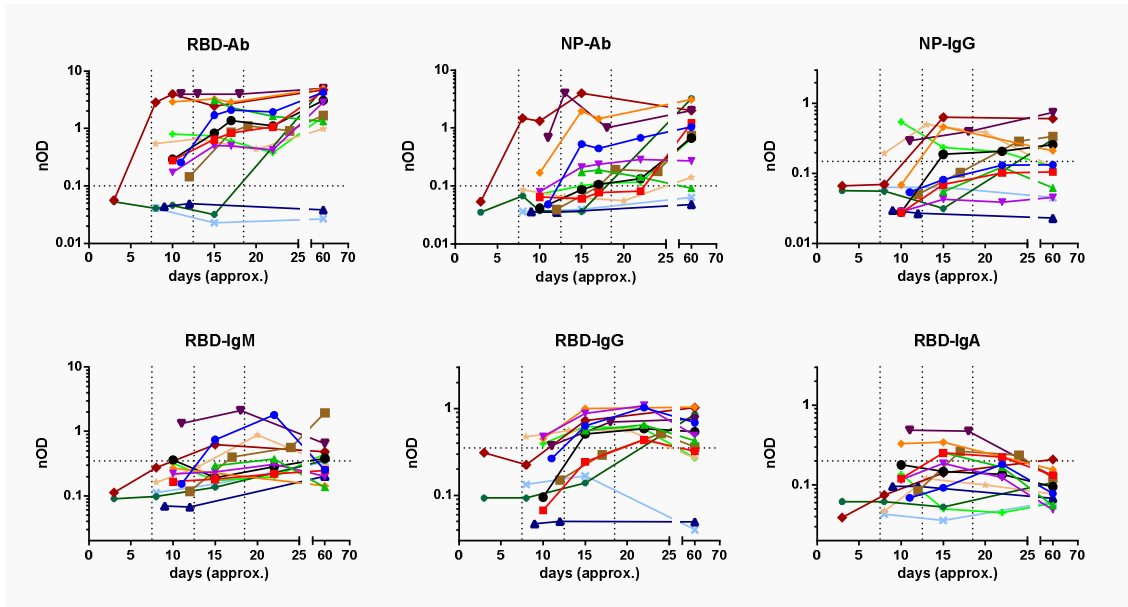


477  
478

479 **Figure 2.** Antibody titers and isotypes measured in different patient populations and at  
480 various time points.

481 Total and isotype-specific antibody titers against the RBD and NP were measured in  
482 different patient populations: hospitalized patients with active disease (Hosp. Ac; 8 – 23  
483 days post symptom onset; n = 41) or convalescent cases (Hosp. Conv; 20 – 66 days post  
484 symptom onset; n = 27), and non-hospitalized convalescent individuals (Non-Hosp. Conv; n =  
485 167). For the latter group, on the x axes the number of days post symptom onset are  
486 indicated. For the isotype-specific assays, signals measured in pre-outbreak healthy donors  
487 (HD) are also indicated (for total Ab, see Figure 1). Dotted lines indicate approximate 95%  
488 (IgM) and 98% (IgG, IgA) percentile of the negative controls. \* p < 0.05; \*\* p < 0.01; \*\*\* <  
489 0.001. Tests performed: Hosp. Ac vs Hosp. Conv, Mann-Whitney; Hosp. Conv vs Non-Hosp.  
490 Conv, Kruskal-Wallis test/Dunn's multiple comparisons test.

491



492

493 **Figure 3.** Kinetics of antibody response against SARS-CoV-2.

494 In 14 non-hospitalized patients with mild symptoms and a high likelihood (1 SARS-CoV-2 RT-

495 PCR confirmed) of SARS-CoV-2 infection we tested the antibody response against the RBD-

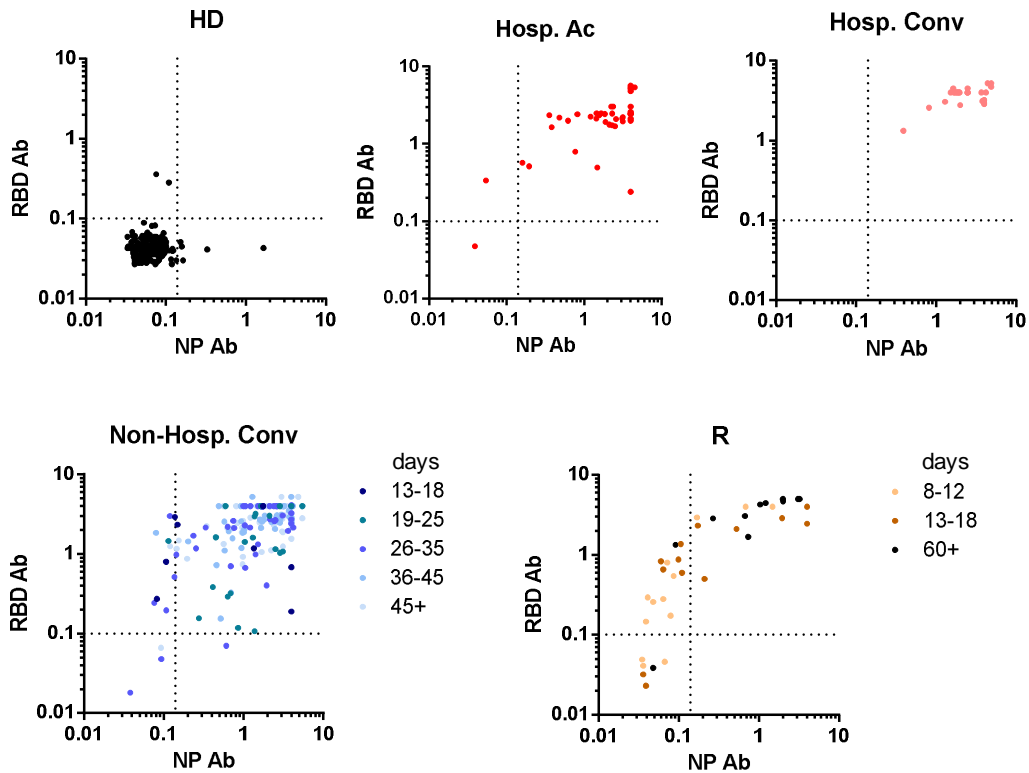
496 Ab, NP-Ab, NP-IgG, RDB-IgM, RBD-IgG and RBD-IgA. The x-axes show the number of days

497 post symptom onset. The horizontal dotted line is the cut-off; samples below this line are

498 considered negative. The vertical dotted lines represent from left to right 8 days, 13 days

499 and 19 days post symptom onset.

500

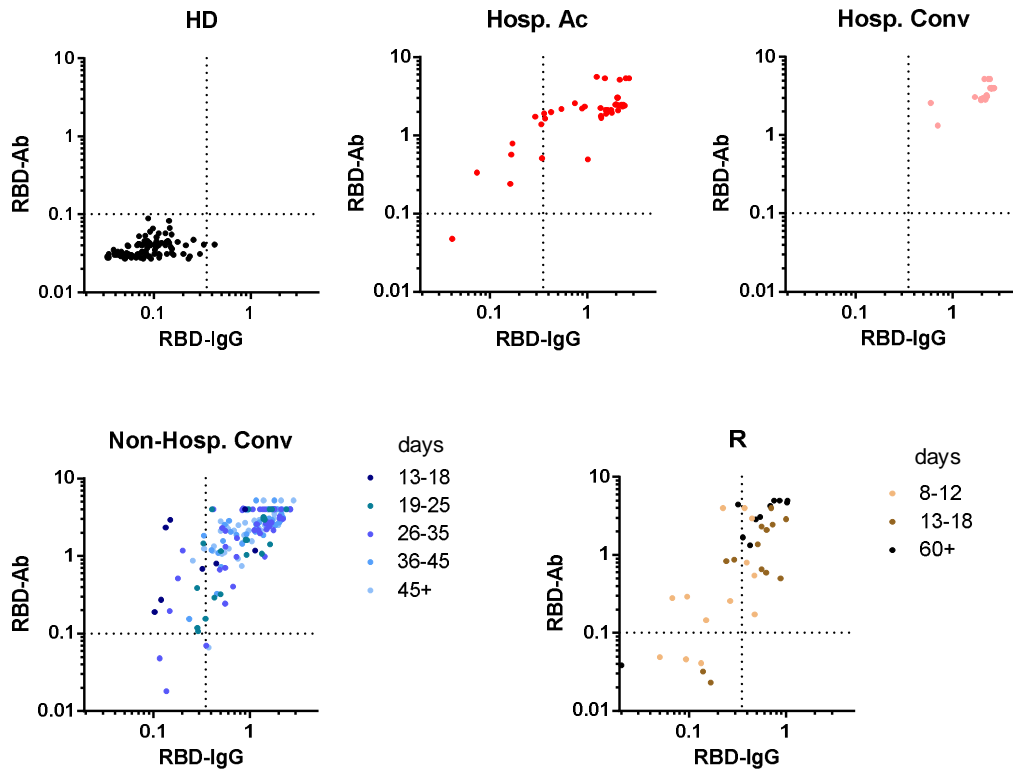


501

502 **Figure 4.** Anti-NP and RBD immune responses compared.

503 Antibodies detected with the NP-Ab and the RBD-Ab assay plotted on the x-y axes for  
 504 different patients groups: pre-outbreak healthy donors (HD), hospitalized patients with  
 505 active disease(Hosp. Ac) or convalescent cases (Hosp. Conv), non-hospitalized convalescent  
 506 individuals (Non-Hosp. Conv, and the Reade patient cohort (R); stratified according to days  
 507 post symptom onset as indicated. Dotted lines indicate the cut-off for both assays.

508



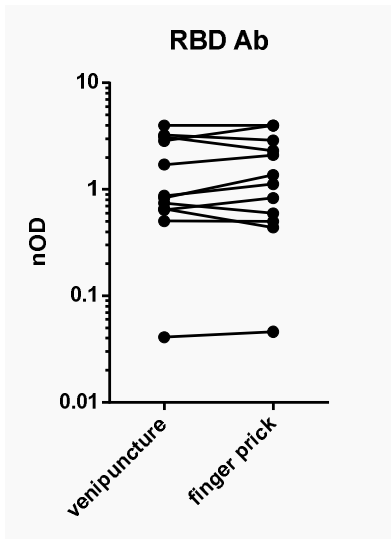
509

510

511 **Figure 5.** Comparison between the RBD-Ab and RBD-IgG assay.

512 Comparison of the detection of antibodies with the RBD-Ab and RBD-IgG assay plotted on  
 513 the x-y axes for different patient groups; stratified according to days post symptom onset as  
 514 indicated. Dotted lines indicate the cut-off for both assays.

515



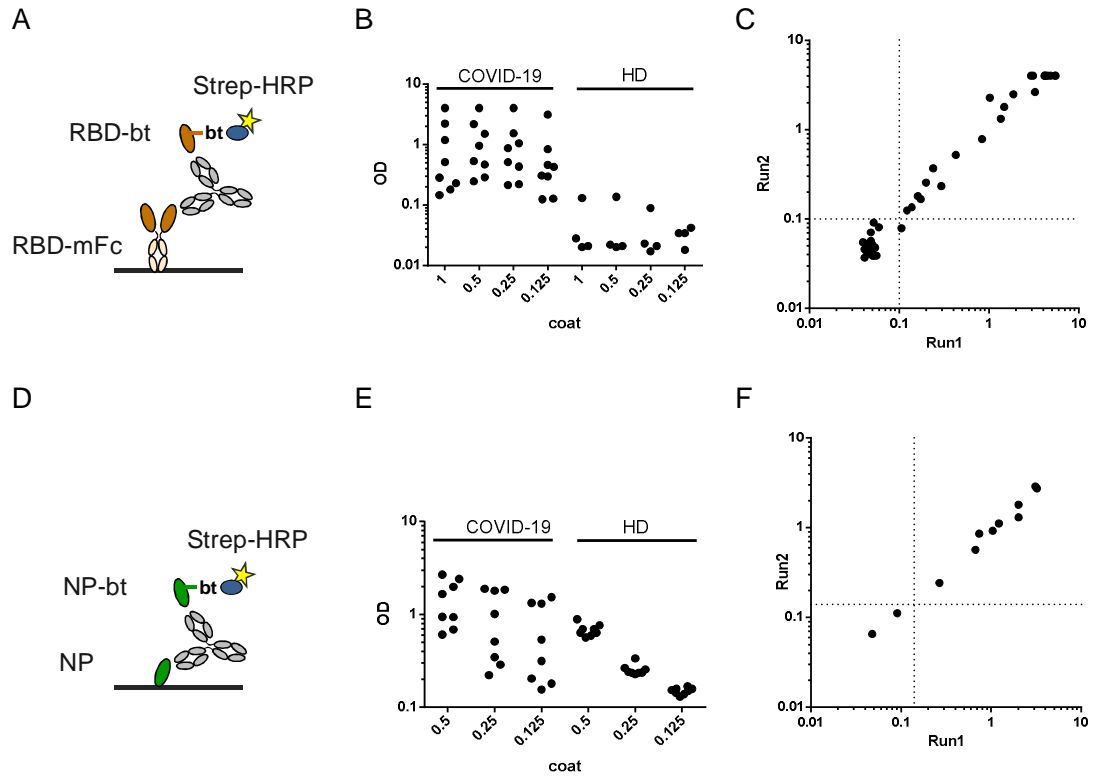
516

517 **Figure 6.** Comparison of venipuncture and finger prick.

518 For the RBD-Ab we compared the antibody titers measured in eleven serum samples

519 obtained from a venipuncture and that obtained by finger prick.

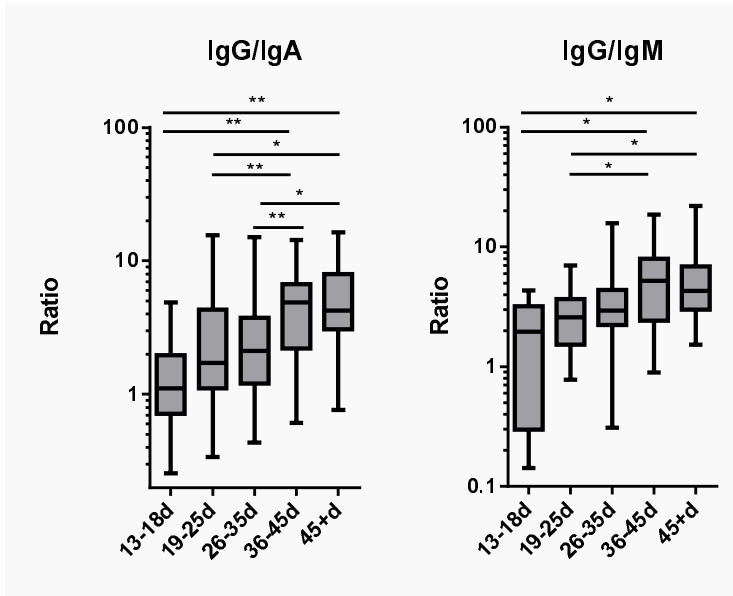
520



521

522 **Figure S1.** Setup of total antibody bridging assays for A) RBD and D) NP antigen. B,E) Impact  
 523 of coating density on signals obtained from sera of selected COVID-19 patients and pre-  
 524 outbreak controls for B) RBD, and E) NP. C,F) Correlation between two independent runs for  
 525 C) the RBD-Ab assay, and F) the NP-Ab assay.

526



527

528 **Figure S2.** Gain in anti-RBD IgG over other isotypes over time in the non-hospitalized  
 529 convalescent individuals. Ratio of nODs. \*  $p < 0.05$ ; \*\*  $p < 0.01$ ; Kruskal-Wallis test/Dunn's  
 530 multiple comparisons test.

531