

Title: Comparative efficacy and safety of pharmacological interventions for the treatment of COVID-19: A systematic review and network meta-analysis of confounder-adjusted 20212 hospitalized patients

Min Seo Kim, MD^{1,4*†}, Min Ho An, MD^{2,5*}, Won Jun Kim, MD^{1,7}, Tae-Ho Hwang, DSS, PhD^{3,6†}

*These authors contributed equally to this work.

†Co-corresponding authors

¹ Korea University, College of Medicine, Seoul, Republic of Korea

² Ajou University, School of Medicine, Suwon, Republic of Korea

³ Department of pharmacology, Pusan National University, School of Medicine, Yangsan, Republic of Korea

⁴ Cheongsan Public Health Center, Wando, Republic of Korea.

⁵ So Ahn Public Health Center, Wando, Republic of Korea.

⁶ Gene and Cell Therapy Research Center for Vessel-associated Diseases, School of Medicine, Pusan National University, Yangsan, Republic of Korea

⁷ Gangneung Prison Medical Department, Ministry of Justice, Republic of Korea.

Corresponding authors:

Min Seo Kim, MD

Korea University, College of Medicine

Director of Cheongsan Public Health Center, Ministry of Health and Welfare, Wando, Republic of Korea

Phone: +82-10-8864-9938

Email: minseolike@naver.com

Tae-Ho Hwang, DSS, PhD.

Department of pharmacology, Pusan National University, School of Medicine, Yangsan, Republic of Korea

Director of Gene and Cell Therapy Research Center for Vessel-associated Diseases, School of Medicine, Pusan National University, Yangsan, Republic of Korea

Phone: +82-10-71579950

Keywords: COVID-19, Hydroxychloroquine, Remdesivir, tocilizumab, anakinra, corticosteroid, antiviral, mortality, viral clearance, network meta-analysis

Category: Systematic review and network meta-analysis

Total word count: 3531

Number of figures: 5

Number of tables: 2

Number of supplementary figures and tables: 1

This manuscript has been reviewed and is approved by all authors.

Min Seo Kim, Min Ho An, Won Jun Kim, Tae-Ho Hwang have no commercial associations that may present a conflict of interest in relation to this manuscript.

Summary Box

Section 1: What is already known on this topic

- Numerous clinical trials and observational studies have investigated various pharmacological agents as potential treatment for COVID-19.
- Results from numerous studies are heterogeneous and sometimes even contradictory to one another, making it difficult for clinicians to determine which treatments are truly effective.
- Level of evidence behind each outcome from diverse studies remains unknown.

Section 2: What this study adds

- Anti-inflammatory agents (tocilizumab, anakinra, and IVIG) and remdesivir may safely and effectively improve clinical outcomes of COVID-19.
- Widely used hydroxychloroquine provides marginal clinical benefit in improving viral clearance rates whilst posing both cardiac and non-cardiac safety risks.
- Only 20% of current evidence on pharmacological management of COVID-19 is on moderate/high evidence certainty and can be considered in practice and policy; remaining 80% are of low or very low certainty and warrant further studies to establish firm conclusions.

ABSTRACT

Objective: To evaluate the comparative efficacy and safety of pharmacological interventions used in treating COVID-19 and form a basis for an evidence-based guideline of COVID-19 management by evaluating the level of evidence behind each treatment regimen in different clinical settings.

Design: Systematic review and network meta-analysis

Data Sources: PubMed, Google Scholar, MEDLINE, the Cochrane Library, medRxiv, SSRN, WHO International Clinical Trials Registry Platform, and ClinicalTrials.gov up to June 9th, 2020.

Study Selection: Published and unpublished randomized controlled trials (RCTs) and baseline-adjusted observational studies which met our predefined eligibility criteria.

Main Outcome Measures: The outcomes of interest were mortality, progression to severe disease (severe pneumonia or admission to intensive care unit (ICU)), time to viral clearance, QT prolongation, fatal cardiac complications, and non-cardiac serious adverse events. The level of evidence behind each outcome was also measured using the Grading of Recommendations Assessment, Development, and Evaluation (GRADE) framework.

Results: 49 studies with a total of 20212 confounder-adjusted patients were included for analysis. The risk of progression to severe pneumonia or ICU admission was significantly reduced with tocilizumab (GRADE low), anakinra (GRADE very low), and remdesivir (GRADE high) compared to standard care. Tocilizumab was shown to reduce mortality rate for both moderate-severe patients in the non-ICU setting at admission (Odds ratio (OR) 0.31, 95% confidence interval (CI) 0.18 to 0.54, GRADE low) and critically ill patients in the ICU setting (OR 0.67, 95% CI 0.50 to 0.91, GRADE low). High dose IVIG reduced death rate (GRADE low) while corticosteroids increased mortality for critically ill patients (GRADE moderate). Convalescent plasma and hydroxychloroquine were shown to promote viral clearance (OR 11.39, 95% CI 3.91 to 33.18, GRADE low and OR 6.08, 95% CI 2.74 to 13.48, GRADE moderate, respectively) while not altering mortality or progression to the severe courses. The combination of hydroxychloroquine and azithromycin was shown to be associated with increased QT prolongation incidence (OR 1.85, 95% CI 1.05 to 3.26, GRADE low) and fatal cardiac complications in cardiac-impaired populations (OR 2.26, 95% CI 1.26 to 4.05, GRADE low). High-dose (>600mg/day) hydroxychloroquine monotherapy was significantly associated with increased non-cardiac serious adverse events (GRADE moderate).

Conclusion: Anti-inflammatory agents (tocilizumab, anakinra, and IVIG) and remdesivir

may safely and effectively improve outcomes of hospitalized COVID-19 patients. Widely used hydroxychloroquine provides marginal clinical benefit in improving viral clearance rates whilst posing both cardiac and non-cardiac safety risks, especially in the vulnerable population. Only 20% of current evidence on pharmacological management of COVID-19 is on moderate and high evidence certainty and can be considered in practice and policy; remaining 80% are of low or very low certainty and warrant further studies to establish firm conclusions.

Systematic Review Registration: PROSPERO 2020: CRD42020186527.

Introduction

A large registry-based study investigating the effect of hydroxychloroquine on COVID-19 patients reported surprisingly high mortality rate and ventricular arrhythmia incidence with hydroxychloroquine use¹, and this paper contributed to the decision of the World Health Organization (WHO) to pause all ongoing trials on hydroxychloroquine due to safety concerns. Although this paper was retracted after concerns raised by clinicians and scientists, the delay of trials and confusion caused by the paper were unavoidable. This was an alarming event that due to the sudden advent of COVID-19 and global urgency to find treatments, many clinical and observational studies are of suboptimal quality²; therefore, it may be unreliable to make decisions grounded on the evidence of a single paper. Prospective meta-analyses synthesizing multiple studies using predefined eligibility criteria can be an interim solution to generate reliable conclusions² and protect from ill-informed changes in practice and policy.

Numerous COVID-19 clinical trials are underway, and over 31 pharmacological agents and combinations have been investigated as potential treatments of COVID-19 to date. Network meta-analysis (NMA) is an analytical tool that enables the a single coherent ranking of such numerous interventions, and it can thus aid decision-makers who must choose amongst an array of treatment options³.

We conducted the first network meta-analysis with selective predefined eligibility criteria for both published and unpublished data, and investigated 31 treatment regimens for comparative efficacy and safety. We incorporated 49 studies (16 randomized controlled trials (RCT) and 33 baseline-adjusted observational studies) including a total of 20212 confounder-adjusted patients. The level of certainty behind the evidence for each outcome was evaluated to assist the decision-making of clinicians and policy makers. This study will serve as the basis for an individual patient data (IPD) network meta-analysis that we are designing as a future study.

Methods

Search strategy and selection criteria

We searched PubMed, Google Scholar, MEDLINE, the Cochrane Library, medRxiv, SSRN, WHO International Clinical Trials Registry Platform, and ClinicalTrials.gov for RCTs and observational studies that evaluated treatment responses to pharmacological management in COVID-19 patients, from inception to June 9th, 2020. Reference lists of review articles were also reviewed to search for additional articles that may not have been retrieved by the

prespecified searching strategy. We had no restriction on language, but all included studies were written in English.

We contacted principal investigators of unpublished studies identified in trial registries and regulatory submissions to obtain unpublished data. Inclusion of unpublished data in NMAs is not uncommon⁴⁻¹¹ and reduces risk of selection and publication bias while increasing the density of study data. This is especially beneficial in the study of COVID-19 as all data were generated relatively recently, and the bulk of the relevant data are still in the unpublished stages. Pre-prints have been used in meta-analysis relatively frequently for the urgent topic of COVID-19⁹⁻¹², and American Gastroenterological Association (AGA) recently published a management guideline for the gastrointestinal manifestation of COVID-19 patients based on the result of meta-analysis incorporating pre-prints¹¹. We contacted authors of included pre-prints from medRxiv and SSRN, and any change in the results was updated.

We included both RCTs and baseline-adjusted observational studies; the rationale is that inclusion of real-world data from non-randomized studies has the potential to improve precision of findings from RCTs if appropriately integrated¹³ and that the volume of information provided by these studies is necessary to assess adverse events of low to moderate incidence¹⁴⁻¹⁶. As observational studies are more vulnerable to bias, we included only the studies that adjusted for relevant confounding variables through methods such as propensity score matching (PSM), inverse probability treatment weighting (IPTW), or regression model adjustment. Studies providing evidence that the risk for such confounding was low by establishing baseline similarity between the groups also met inclusion criteria (Appendix p5).

Following studies were excluded: studies without a proper control group; studies of children or adolescents (<18 years); observational studies with significant differences in baseline characteristics between groups and did not perform adequate adjustments; studies investigating the effect of medication initiated prior to the diagnosis of COVID-19 (e.g. ACEi/ARB for hypertensive patients).

Data extraction and quality assessment

The study search and data extraction were independently conducted by 3 authors (MS Kim, MH An, and WJ Kim). Manuscript and supplementary materials of the included studies were reviewed for relevant information which was extracted according to a pre-specified protocol. Any discrepancy or ambiguity in this process was resolved by discussion. Authors of certain included studies were contacted in case of missing or unclear information. Non-randomized studies were qualitatively assessed using the Newcastle-Ottawa Scale (NOS)¹⁷, and RCTs were assessed with the Jadad scale¹⁸. All studies were assessed for risk of bias using the RoB 2 tool for randomized studies and ROBINS-I tool for nonrandomized studies¹⁹. The quality of evidence of collective outcomes were estimated using the Grading of Recommendations

Assessment, Development, and Evaluation (GRADE) framework²⁰. A comparison-adjusted funnel plot with Egger's test was constructed to assess for publication bias²¹.

Control groups consisted of patients who received standard care or placebo. Patients who received hydroxychloroquine or corticosteroids were subdivided according to the dosage they received. For hydroxychloroquine, most studies reported 400mg hydroxychloroquine daily for maintenance, and this was considered the standard prescription; patients who received daily maintenance dosage of over 600mg hydroxychloroquine were classified into a separate high-dose hydroxychloroquine group. For corticosteroids, average daily dosage of 40mg methylprednisolone (or equivalent) was regarded as the standard dosage, while 1-2mg/kg/day methylprednisolone (or equivalent) was regarded as high dose. 1mg methylprednisolone was considered equivalent to 0.1875mg dexamethasone and 5mg hydrocortisone.

A critically ill patient was defined as a patient who received invasive mechanical ventilation or needed intensive care in the ICU before or soon after beginning the treatment of interest, while moderate-severe patients were defined as patients hospitalized in a non-ICU setting at admission. The mortality rate of patients included in our mortality analyses were 11.7% for moderate-severe (non-ICU) patients and 38.6% for critically ill (ICU) patients on average.

Data synthesis and statistical analysis

We conducted a random-effects network meta-analysis within a frequentist framework using STATA (Stata Corp, College Station, TX, US, version 15.0) and R (version 3.6.0) software²². Direct and indirect (and mixed) comparison were accomplished through the self-programmed routines of STATA^{21 23} and the netmeta package of R²⁴, as done in our previous work²⁵. The effect estimation was in odds ratios (OR) for dichotomous variables and mean difference (MD) for continuous variables, both with 95% confidential intervals (CI). When median (interquartile range) was presented for continuous variables of interest, it was converted to mean (standard deviation) by calculation^{26 27}. A two-sided p-value of less than 0.05 was regarded as statistically significant.

Statistical heterogeneity was estimated using restricted maximum likelihood method²⁸ and expressed with Higgins I² statistics and the Cochran Q test²⁹. The net heat plot was constructed to visualize the inconsistency matrix and detect specific comparisons which introduced large inconsistencies³⁰. The rank of effect estimation for each treatment was investigated using the surface under the cumulative rank curve (SUCRA) of P rank score of R³¹.

Prespecified subgroup and sensitivity analyses were performed to determine whether the results were affected by the patient severity, treatment protocol, and study design. The primary outcomes were separately analyzed for moderate to severe patients (non-ICU at admission) and critically ill patients (ICU) as these patients may respond differently to

treatments. Sensitivity analyses were conducted by restricting the analyses to only RCTs, only published studies, excluding studies with high/serious risk of bias, and excluding studies in which initiation of treatment was over 14 days after symptom onset.

Patient and public involvement

Neither any patients nor the public were involved in the design, conduct, and reporting of the research. The study protocol is publicly available on PROSPERO (CRD42020186527) and medRxiv.

Results

The initial search identified 5970 articles. These studies were assessed for inclusion using the prespecified inclusion and exclusion criteria described in methods. Title and abstract of 3,626 articles were assessed, and 251 studies were found suitable for full-text review. After excluding 202 studies, 16 RCTs and 33 baseline-adjusted observations studies were finally included in our network meta-analysis (Figure 1). Total of 20212 confounder-adjusted COVID-19 patients were included. Background characteristics and reference list of included studies are presented in the supplementary appendix pp113-170. The risk of bias in included studies were generally low to moderate (Supplementary appendix pp 63-108).

For both pairwise meta-analysis and network meta-analysis, the primary outcomes presented no evidence of heterogeneity (Appendix pp 12-47). Inconsistency, which represents discordance of direct and indirect comparisons, was also evaluated for outcomes, but none were subject to global inconsistency. The network of eligible comparisons for clinically relevant outcomes are presented in Figure 2. Detailed information of studies included in the analysis for cardiac adverse events are presented in Table 1, and the certainty of evidence (GRADE) for each outcome is summarized in Table 2.

Mortality in ICU and non- ICU settings

Tocilizumab (Odds ratio (OR) 0.31, 95% confidence interval (CI) 0.18 to 0.54, low certainty) and anakinra (OR 0.30, 95% CI 0.11 to 0.80, very low certainty) significantly reduced the mortality in moderate-to-severe patients hospitalized in a non-ICU setting compared to the control group (Figure 3A). This effect could not be confirmed in a parallel sensitivity analysis with only RCTs (Figure 3B) as no RCTs were conducted for either agent. In critically ill patients hospitalized in the ICU, high dose IVIG (OR 0.13, 95% CI 0.04 to 0.42, low certainty) and tocilizumab (OR 0.67, 95% CI 0.50 to 0.91, low certainty) were shown to lower mortality while corticosteroid therapy was shown to increase mortality (OR 2.40, 95% CI 1.02 to 5.61, moderate certainty) (Figure 3C).

Progression to severe pneumonia or admission to ICU

Tocilizumab (OR 0.32, 95% CI 0.16 to 0.65, low certainty), anakinra (OR 0.22, 95% CI 0.09 to 0.54, very low certainty), and remdesivir (OR 0.31, 95% CI 0.18 to 0.55, high certainty) showed effectiveness in preventing progression to severe courses (Figure 3E). Only remdesivir was shown to be effective in the analysis using only RCTs (OR 0.31, 95% CI 0.18 to 0.55) (Figure 3F).

Viral clearance rate (negative conversion rate)

The use of convalescent plasma (OR 11.39, 95% CI 3.91 to 33.18, low certainty), hydroxychloroquine (OR 6.08, 95% CI 2.74 to 13.48, moderate certainty), and meplazumab (OR 8.67, 95% CI 1.53 to 49.22, very low certainty) showed significantly higher viral clearance rate compared to standard supportive therapy (Figure 4A). However, this effect of hydroxychloroquine and meplazumab was not replicated in the analysis of only RCTs (Figure 4B). The result was similar when using the continuous variable of time to viral clearance (days) as the outcome measure (Figure 4C, D).

Time to treatment initiation from symptom onset

The effect of the timing of hydroxychloroquine treatment initiation after the symptom onset (Figure 4E) was assessed. Treatment initiated after 14 days (MD -2.02, 95% CI -7.03 to 3.00) from symptom onset did not reduce the time to viral clearance compared to standard care.

QTc prolongation

Compared to hydroxychloroquine monotherapy, the prolongation of QTc interval after treatment initiation was statistically significantly longer in the hydroxychloroquine plus azithromycin group (MD 20.79ms, 95% CI 12.60 to 28.98, low certainty) (Figure 5A). The proportion of patients experiencing QTc prolongation (defined by QTc interval >500ms or Δ QTc >60ms) was also significantly higher in the hydroxychloroquine plus azithromycin group compared to the control group (OR 1.85, 95% CI 1.05 to 3.26, very low certainty) but not in the hydroxychloroquine monotherapy group, azithromycin monotherapy group, or high-dose hydroxychloroquine group (Figure 5B).

Fatal cardiac complications: Torsades de pointes, cardiac arrest, and severe ventricular arrhythmia

The associations between fatal cardiac complications and hydroxychloroquine, azithromycin, or hydroxychloroquine plus azithromycin therapy were analyzed (Figure 5C). Overall, treatment with hydroxychloroquine plus azithromycin showed a significant association (OR 2.25, 95% CI 1.27 to 3.99, low certainty) while others did not. We further subdivided the included studies based on prevalence of coronary artery disease (CAD) and congestive heart

disease (CHD) at baseline. In studies in which >10% of the baseline population had CAD/CHD, the risk of fatal cardiac complication was statistically significantly higher in patients receiving hydroxychloroquine plus azithromycin. In studies in which <10% of the baseline population had CAD/CHD, no notable difference in incidence of fatal heart complication was observed in any treatment group.

Non-cardiac serious adverse events

High dose (>600mg/day) hydroxychloroquine was associated with increased non-cardiac serious adverse events (Figure 5D). In contrast, there was a protective tendency with a decreased rate of adverse events with remdesivir compared to standard care (OR 0.71, 95% CI 0.55 to 0.92, high certainty).

Subgroup and sensitivity analysis

The results of our subgroup and sensitivity analysis are reported in the Appendix pp 48-62. The assessments of other specific complications such as nausea/vomiting, diarrhea, hypoalbuminemia, anemia, leukopenia, lymphopenia, elevated AST/ALT, elevated CK, and increase total bilirubin are also presented in Appendix pp 52-54.

Discussion

This is the first network meta-analysis (NMA) of pharmacological treatment for COVID-19. We comprehensively analyzed 31 active pharmacologic agents and their combinations in a large-scale analysis incorporating 20212 confounder-adjusted patients. Our study included unpublished data to integrate recent investigations and avoid selection and publication bias, as done in previous studies⁴⁻⁷. We did not limit our inclusions to RCTs and incorporated observational studies as we deemed that, in this analysis, the inclusion of real-world evidence from non-randomized studies has the potential to add validity to certain findings¹³, provide additional information regarding low-to-moderate incidence adverse events¹⁴⁻¹⁶, and improve the density of the network¹⁴. Many previous NMAs included observational studies with this rationale^{14-16 32 33}, but inclusion of observational studies to an NMA requires careful integration to avoid biases from these observational studies pervading the meta-analysis³⁴; as such, we exclusively included cohort studies that adjusted for confounders through methods such as propensity score matching (PSM), inverse probability treatment weighting (IPTW), and regression model adjustment or established similarity in the baseline characteristics of the groups being compared so that such adjustments are not necessary or irrelevant.

Statement of principal findings

Our conclusions support the use of individualized treatment strategies based on clinical setting and severity. For moderate and severe patients hospitalized in non-ICU settings,

tocilizumab and anakinra were shown to reduce risk of progression to severe pneumonia or ICU admission. Both of these selective anti-inflammatory agents also showed survival benefit compared to standard care. Remdesivir was the only antiviral agent shown to prevent progression of disease to severe pneumonia or transfer to ICU, but it did not alter mortality rate for non-ICU patients. For ICU-based critically ill patients, high dose IVIG and tocilizumab may reduce mortality while corticosteroid was associated with increased mortality. Convalescent plasma and hydroxychloroquine, topics of much debate, were not shown to reduce mortality rate or prevent progression to severe disease in our analysis; however, they demonstrated benefit in promoting viral clearance.

Implications for clinicians and policymakers

Our analysis showed that hydroxychloroquine was significantly associated with reduced time to viral clearance (Figure 4C). Although this result was not supported by a single RCT on this subject³⁵, this RCT should be interpreted with caution due to the median 16 days of delay from symptom onset to the treatment; our analysis indicated that the effects of hydroxychloroquine may fade after 14 days of delay from symptom onset to treatment initiation (Figure 4E). It should be noted that hydroxychloroquine was not shown to reduce mortality rate or progression to severe courses. As the level of evidence (GRADE assessment) varies in certainty for these results, further prospective large randomized trials with early initiation of treatment may be warranted to establish firm conclusions.

The potential cardiotoxicity of hydroxychloroquine and azithromycin is a widely shared concern in treating COVID-19 with these medications. According to our quantitative synthesis, incidence of QT prolongation was significantly higher in the patients who received hydroxychloroquine plus azithromycin compared to those who received standard care (Figure 5B). In addition, this combination of hydroxychloroquine and azithromycin was also associated with increased rate of fatal cardiac complications such as torsades de pointes, cardiac arrest, and severe ventricular arrhythmia in the cardiac-impaired population with a pooled incidence of 12.2%; in comparison, the pooled fatal cardiac complications rate in healthy populations with preserved cardiac function was about 0%. Therefore, the use of hydroxychloroquine/azithromycin should be limited to patients with healthy cardiac function, and monotherapy should be preferred to combination therapy for patients with poor cardiac function (Figure 5C). It should also be noted that non-cardiac adverse events were significantly more frequent in high dose (>600mg/day) hydroxychloroquine monotherapy compared to standard care (Figure 5D); nausea, vomiting, and diarrhea that required discontinuation of the treatment were more frequent with high dose hydroxychloroquine intake. Strict monitoring should be implemented in all patients receiving hydroxychloroquine with or without azithromycin to maintain a tolerable safety margin.

The results of our study also showed the efficacy of remdesivir in reducing the progression of COVID-19 to more severe pneumonia or admission to the ICU (Figure 3E-F). This result was supported by a high certainty of evidence (Table 2) and was replicated in the sensitivity analysis that included only RCTs. Interestingly, non-cardiac serious adverse events occurred

significantly less in patients who received remdesivir compared to the control group (Figure 5D). This may be explained by the preventive effect of remdesivir against progression to severe diseases as numerous clinical trials reported possible consequences of severe disease such as septic shock and acute kidney injury as non-cardiac serious adverse events.

Tocilizumab (monoclonal IL-6 receptor antibody), anakinra (IL-1 receptor antagonist), and IVIG were associated with significantly reduced mortality in COVID-19 patients (Figure 3A-D). These three agents are known anti-inflammatory agents that have been conventionally used in hyperimmune or autoimmune conditions; tocilizumab and anakinra have been used for the management of severe rheumatoid arthritis^{36 37} and juvenile idiopathic arthritis³⁸⁻⁴⁰, and IVIG was used for management of Kawasaki's disease^{41 42}, inflammatory muscle diseases^{43 44}, and sepsis⁴⁵. As there is accumulating evidence for an hyper-immune response characterized by the release of pro-inflammatory cytokines in severe and deceased Covid-19 patients⁴⁶⁻⁵⁰, suppression of the inflammatory response and potential cytokine storm with immune-modulatory therapies was proposed as a potential therapeutic target; the results of this network meta-analysis support the efficacy of these treatments. Effectiveness of anti-inflammatory agents (tocilizumab, anakinra, IVIG) and ineffectiveness of antiviral agents, except for remdesivir, in hospitalized COVID-19 patients suggest that the management should focus more on the immune response rather than viral mechanism itself. Although numerous studies reported consistent results on beneficial effect of such agents, the certainty of evidence for these agents are either low or very low because conclusions on tocilizumab, anakinra, and IVIG to date are all based on observational studies. Randomized controlled trials on these anti-inflammatory agents are required to confirm these findings and increase the level of evidence.

Corticosteroids, on the other hand, were associated with significantly increased risk of mortality in critically ill COVID-19 patients (Figure 3C). It could be argued that the frequent use of corticosteroids on patients with more severe conditions may have skewed the results against corticosteroid use; however, the studies included in our synthesis have adjusted for confounders for mortality including severity of disease, implicating that the observed unsafe effect of corticosteroids in critically ill COVID-19 should not be neglected. The detrimental effects of corticosteroid on mortality is in line with previous studies that showed the higher mortality rate with adjuvant steroid use in H1N1 influenza-infected critically ill patients in the ICU due to increased rates of superinfection and non-selective suppression of immune responses⁵¹⁻⁵³.

Limitations

Our study has several limitations. First, some of the results were derived from a single study (i.e., Anakinra) or studies with high risk of bias. To account for such weakness in evidence, we assessed the certainty of evidence for each outcome using the GRADE framework as summarized in Table 2. Second, for certain treatment agents, many articles have been

published among which only one or few have been included in our analysis (e.g. convalescent plasma). This is because we prospectively collected studies adhere to predefined inclusion criteria, and studies that did not adequately account for confounding or those prone to significant bias were filtered out. The excluded studies are listed and described in the supplementary appendix pp 171-174 with reasons for exclusion. Third, we included observational studies and unpublished data. While such inclusions may introduce biases into the final analysis, we judged the benefits outweigh the risks for reasons we mentioned in methods. Furthermore, we attempted to minimize biases by exclusively including observational studies with confounder-adjustment and further conducted sensitivity analyses in which the same analysis was performed using only RCTs or only published studies (Appendix pp 55-58). Lastly, some of the results derived from this NMA lacks the support of pairwise meta-analysis. However, the methodological power of NMA is credible as empirical evidence supported that NMAs were 20% more likely to provide stronger evidence against the null hypothesis than conventional pairwise meta-analyses⁵⁴. Accordingly, our NMA can offer meaningful implications for guiding management of COVID-19 until future studies build up stronger evidence.

Conclusion

Anti-inflammatory agents (tocilizumab, anakinra, and IVIG) and remdesivir may safely and effectively improve clinical outcomes of COVID-19. Widely used hydroxychloroquine provides marginal clinical benefit in improving viral clearance rates whilst posing both cardiac and non-cardiac safety risks. Only 20% of current evidence on pharmacological management of COVID-19 is on moderate/high evidence certainty and can be considered in practice and policy; remaining 80% are of low or very low certainty and warrant further studies to establish firm conclusions.

Funding

There was no funding source for this study. MS Kim and MH An had full access to all of the data in the study and MS Kim and T Hwang had final decision responsibility to submit for publication.

Contributors

MS Kim and MH An contributed to the study concept and design. MS Kim, MH An, and WJ Kim identified and acquired relevant trials and extracted data. MS Kim and WJ Kim drafted the protocol for this study. MS Kim and MH An analyzed and interpreted the data. MS Kim and MH An wrote the first draft of the manuscript. T Hwang contributed to the interpretation of data and critical revision of the manuscript. All authors saw and approved the final

submitted version.

Competing interests

All authors have completed the ICMJE uniform disclosure form at www.icmje.org/coi_disclosure.pdf (available on request from the corresponding author) and declare: no support from any organization for the submitted work; no financial relationships with any organizations that might have an interest in the submitted work in the previous three years; no other relationships or activities that could appear to have influenced the submitted work.

Ethical approval

Not required

Data sharing

Not applicable

Dissemination declare:

Not applicable

Transparency

The manuscript's guarantor (MSK) affirms that this manuscript is an honest, accurate, and transparent account of study being reported; that no important aspects of the study have been omitted; and that any discrepancies from the study as planned have been explained.

References

1. Mehra MR, Ruschitzka F, Patel AN. Retraction;Hydroxychloroquine or chloroquine with or without a macrolide for treatment of COVID-19: a multinational registry analysis. *Lancet* 2020; doi: 10.1016/S0140-6736(20)31324-6
2. Ma Z, Liu J, Pan Q. Overwhelming COVID-19 Clinical Trials: Call for Prospective Meta-analysis. *Trends Pharmacol Sci* 2020; 20:S0165-6147(20)30126-7.
3. Higgins JP, Welton NJ. Network meta-analysis: a norm for comparative effectiveness? *The Lancet* 2015;386(9994):628-30.
4. Huhn M, Nikolakopoulou A, Schneider-Thoma J, et al. Comparative efficacy and tolerability of 32 oral antipsychotics for the acute treatment of adults with multi-episode schizophrenia: a systematic review and network meta-analysis. *Lancet* 2019;394(10202):939-

51.

5. Slee A, Nazareth I, Bondaronek P, et al. Pharmacological treatments for generalised anxiety disorder: a systematic review and network meta-analysis. *Lancet* 2019; 393(10173):768-777. doi: 10.1016/S0140-6736(18)31793-8.
6. Eyding D, Lelgemann M, Grouven U, et al. Reboxetine for acute treatment of major depression: systematic review and meta-analysis of published and unpublished placebo and selective serotonin reuptake inhibitor controlled trials. *BMJ* 2010;341:c4737.
7. Jinatongthai P, Kongwatcharapong J, Foo CY, et al. Comparative efficacy and safety of reperfusion therapy with fibrinolytic agents in patients with ST-segment elevation myocardial infarction: a systematic review and network meta-analysis. *Lancet* 2017;390(10096):747-59.
8. Langhorne P, Ramachandra S, Collaboration SUT. Organised inpatient (stroke unit) care for stroke: network meta-analysis. *Cochrane Database Syst Rev* 2020;4(4):CD000197.
9. Wynants L, Van Calster B, Bonten MM, et al. Prediction models for diagnosis and prognosis of covid-19 infection: systematic review and critical appraisal. *BMJ* 2020; 369:m1328.
10. Li J-W, Han T-W, Woodward M, et al. The impact of 2019 novel coronavirus on heart injury: A systemic review and Meta-analysis. *Prog Cardiovasc Dis* 2020;S0033-0620(20)30080-3.
11. Sultan S, Altayar O, Siddique SM, et al. AGA Institute Rapid Review of the GI and Liver Manifestations of COVID-19, Meta-Analysis of International Data, and Recommendations for the Consultative Management of Patients with COVID-19. *Gastroenterology* 2020; S0016-5085(20)30593-X.
12. Viner RM, Russell SJ, Croker H, et al. School closure and management practices during coronavirus outbreaks including COVID-19: a rapid systematic review. *Lancet Child Adolesc Health* 2020;4(5):397-404. doi: 10.1016/S2352-4642(20)30095-X.
13. Efthimiou O, Mavridis D, Debray TP, et al. Combining randomized and non-randomized evidence in network meta-analysis. *Stat Med* 2017;36(8):1210-26.
14. Marconi E, Bettiol A, Ambrosio G, et al. Efficacy and safety of pharmacological treatments for Patent Ductus Arteriosus closure: a systematic review and network meta-analysis of clinical trials and observational studies. *Pharmacol Res* 2019:104418.
15. Tricco AC, Zarin W, Cardoso R, et al. Efficacy, effectiveness, and safety of herpes zoster vaccines in adults aged 50 and older: systematic review and network meta-analysis. *BMJ* 2018;363:k4029.
16. Zeng C, Wei J, Persson MS, et al. Relative efficacy and safety of topical non-steroidal anti-inflammatory drugs for osteoarthritis: a systematic review and network meta-analysis of randomised controlled trials and observational studies. *Br J Sports Med* 2018;52(10):642-50.
17. Wells G, Shea B, O'connell D, et al. The Newcastle-Ottawa Scale (NOS) for assessing the quality of nonrandomised studies in meta-analyses. Ottawa (ON): Ottawa Hospital Research Institute; 2009. Available in March 2016
18. Clark HD, Wells GA, Huët C, et al. Assessing the quality of randomized trials: reliability of the Jadad scale. *Control Clin Trials* 1999;20(5):448-52.
19. Sterne JA, Hernán MA, Reeves BC, et al. ROBINS-I: a tool for assessing risk of bias in non-randomised studies of interventions. *BMJ* 2016;355:i4919.
20. Puhan MA, Schünemann HJ, Murad MH, et al. A GRADE Working Group approach for rating the quality of treatment effect estimates from network meta-analysis. *BMJ* 2014;349:g5630.
21. Chaimani A, Higgins JP, Mavridis D, et al. Graphical tools for network meta-analysis in STATA. *Plos One* 2013;8(10):e76654.

22. Xu C, Niu Y, Wu J, et al. Software and package applying for network meta-analysis: A usage-based comparative study. *J Evid Based Med* 2018;11(3):176-83.
23. Shim S, Yoon B-H, Shin I-S, et al. Network meta-analysis: application and practice using Stata. *Epidemiol Health* 2017;39:e2017047.
24. Neupane B, Richer D, Bonner AJ, et al. Network meta-analysis using R: a review of currently available automated packages. *Plos One* 2014;9(12):e115065.
25. Kim MS, Rhim HC, Park A, et al. Comparative efficacy and acceptability of pharmacological interventions for the treatment and prevention of delirium: A systematic review and network meta-analysis. *J Psychiatr Res* 2020;125:164-176. doi: 10.1016/j.jpsychires.2020.03.012.
26. Hozo SP, Djulbegovic B, Hozo I. Estimating the mean and variance from the median, range, and the size of a sample. *BMC Med Res Methodol* 2005;5(1):13.
27. Wan X, Wang W, Liu J, et al. Estimating the sample mean and standard deviation from the sample size, median, range and/or interquartile range. *BMC Med Res Methodol* 2014;14(1):135.
28. Lumley T. Network meta-analysis for indirect treatment comparisons. *Stat Med* 2002;21(16):2313-24.
29. Higgins J, Thompson SG. Quantifying heterogeneity in a meta-analysis. *Stat Med* 2002;21(11):1539-58.
30. Krahn U, Binder H, König J. A graphical tool for locating inconsistency in network meta-analyses. *BMC Med Res Methodol* 2013;13(1):35.
31. Rücker G, Schwarzer G. Ranking treatments in frequentist network meta-analysis works without resampling methods. *BMC Med Res Methodol* 2015;15(1):58.
32. Kanters S, Socias ME, Paton NI, et al. Comparative efficacy and safety of second-line antiretroviral therapy for treatment of HIV/AIDS: a systematic review and network meta-analysis. *Lancet HIV* 2017;4(10):e433-e41.
33. Datta S, Shah L, Gilman RH, et al. Comparison of sputum collection methods for tuberculosis diagnosis: a systematic review and pairwise and network meta-analysis. *Lancet Glob Health* 2017;5(8):e760-e71.
34. Cameron C, Fireman B, Hutton B, et al. Network meta-analysis incorporating randomized controlled trials and non-randomized comparative cohort studies for assessing the safety and effectiveness of medical treatments: challenges and opportunities. *Syst Rev* 2015;4(1):147.
35. Tang W, Cao Z, Han M, et al. Hydroxychloroquine in patients with mainly mild to moderate coronavirus disease 2019: open label, randomised controlled trial. *BMJ* 2020;369:m1849. doi: 10.1136/bmj.m1849
36. Singh JA, Beg S, Lopez-Olivo MA. Tocilizumab for rheumatoid arthritis: a Cochrane systematic review. *J Rheumatol* 2011;38(1):10-20.
37. Smolen JS, Beaulieu A, Rubbert-Roth A, et al. Effect of interleukin-6 receptor inhibition with tocilizumab in patients with rheumatoid arthritis (OPTION study): a double-blind, placebo-controlled, randomised trial. *Lancet* 2008;371(9617):987-97.
38. Sahraoui A, Kloster-Jensen K, Ueland T, et al. Anakinra and tocilizumab enhance survival and function of human islets during culture: implications for clinical islet transplantation. *Cell transplant* 2014;23(10):1199-211. doi: 10.3727/096368913x667529 [published Online First: 2013/05/03]
39. Nigrovic PA, Mannion M, Prince FH, et al. Anakinra as first-line disease-modifying therapy in systemic juvenile idiopathic arthritis: report of forty-six patients from an international multicenter series. *Arthritis Rheum* 2011;63(2):545-55.
40. Yokota S, Imagawa T, Mori M, et al. Efficacy and safety of tocilizumab in patients with

- systemic-onset juvenile idiopathic arthritis: a randomised, double-blind, placebo-controlled, withdrawal phase III trial. *Lancet* 2008;371(9617):998-1006.
41. Toubiana J, Poirault C, Corsia A, et al. Kawasaki-like multisystem inflammatory syndrome in children during the covid-19 pandemic in Paris, France: prospective observational study. *BMJ* 2020;369
42. Oates □ Whitehead RM, Baumer JH, Haines L, et al. Intravenous immunoglobulin for the treatment of Kawasaki disease in children. *Cochrane Database Syst Rev* 2003;2003(4):CD004000.
43. Hughes RA, Swan AV, van Doorn PA. Cochrane Review: Intravenous immunoglobulin for Guillain □ Barré syndrome. *Cochrane Database Syst Rev* 2012 Jul 11;(7):CD002063.
44. Nimmerjahn F, Ravetch JV. Anti-inflammatory actions of intravenous immunoglobulin. *Annu Rev Immunol* 2008;26:513-33.
45. Alejandria MM, Lansang MAD, Dans LF, et al. Intravenous immunoglobulin for treating sepsis, severe sepsis and septic shock. *Cochrane Database Syst Rev* 2013;2013(9):CD001090.
46. Khan F, Fabbri L, Stewart I, et al. A systematic review of Anakinra, Tocilizumab, Sarilumab and Siltuximab for coronavirus-related infections. *medRxiv* [preprint] 2020:2020.04.23.20076612. doi: 10.1101/2020.04.23.20076612
47. Qin C, Zhou L, Hu Z, et al. Dysregulation of immune response in patients with COVID-19 in Wuhan, China. *Clin Infect Dis* 2020 doi: 10.1093/cid/ciaa248 [published Online First: 2020/03/13]
48. Chen T, Wu D, Chen H, et al. Clinical characteristics of 113 deceased patients with coronavirus disease 2019: retrospective study. *BMJ* 2020;368
49. Mehta P, McAuley DF, Brown M, et al. COVID-19: consider cytokine storm syndromes and immunosuppression. *Lancet* 2020;395(10229):1033.
50. Cao X. COVID-19: immunopathology and its implications for therapy. *Nat Rev Immunol* 2020;20(5):269-70.
51. Kim SH, Hong SB, Yun SC, et al. Corticosteroid treatment in critically ill patients with pandemic influenza A/H1N1 2009 infection: analytic strategy using propensity scores. *Am J Respir Crit Care Med* 2011;183(9):1207-14. doi: 10.1164/rccm.201101-0110OC.
52. Liem NT, Tung CV, Hien ND, et al. Clinical features of human influenza A (H5N1) infection in Vietnam: 2004–2006. *Clin Infect Dis* 2009;48(12):1639–46.
53. Abdel-Ghafar A, Chotpitayasunondh T, Gao Z, et al. Writing committee of the second world health organization consultation on clinical aspects of human infection with avian influenza A (H5N1) virus. Update on avian influenza A (H5N1) virus infection in humans. *N Engl J Med* 2008;358(3):261-73.
54. Nikolakopoulou A, Mavridis D, Furukawa TA, et al. Living network meta-analysis compared with pairwise meta-analysis in comparative effectiveness research: empirical study. *BMJ* 2018;360:k585. doi: 10.1136/bmj.k585.

Figure legends

Figure 1. PRISMA diagram showing selection of articles for pairwise and network meta-analysis

Figure 2: Network of eligible comparisons for primary outcomes

(A) Mortality for moderate-severe COVID-19 patients (non-ICU at admission). (B) mortality for critically ill patients (ICU). (C) Progression of disease to severe courses (i.e. progression to severe pneumonia and/or admission to ICU). (D) Time to viral clearance (days). (E) Fatal cardiac adverse events (torsades de pointes, cardiac arrest, and severe ventricular arrhythmia). (F) Non-cardiac serious adverse events. Lines indicate direct comparison of agents, and the thickness of line corresponds to the number of trials in the comparison. Size of node corresponds to the number of studies that involve the intervention. HQ = Hydroxychloroquine. Lop/R = Lopinavir-Ritonavir. ICU = intensive care unit.

Figure 3: Network meta-analysis of pharmacological interventions compared with control (standard care) for efficacy outcomes.

Mortality for moderate-severe patients (non-ICU at admission) from (A) all studies and (B) RCTs only. Mortality for critically ill patients (ICU) from (C) all studies and (D) RCTs only. Progression to severe course (i.e. progression to severe pneumonia and/or admission to ICU) from (E) all studies and (F) RCTs only. Effect estimates are presented in odds ratios (OR) with 95% CI. Pharmacological agents are ranked by surface under the cumulative ranking curve (SUCRA) value. RCT = randomized controlled trial. ICU = intensive care unit.

Figure 4: Network meta-analysis of pharmacological interventions compared with control (standard care) for viral clearance.

Viral clearance rate (proportion of patients converted to PCR-negative status) from (A) all studies and (B) RCTs only. Time to viral clearance (days) from (C) all studies and (D) RCTs only. (E) Time to viral clearance from different hydroxychloroquine treatment initiation timings after symptom onset. Effect estimates are presented in odds ratios (OR) for viral clearance rate and mean differences (MD) for time to viral clearance, with 95% CI. Pharmacological agents are ranked by surface under the cumulative ranking curve (SUCRA) value. RCT = randomized controlled trial.

Figure 5: Network meta-analysis of safety of different pharmacological interventions.

(A) Change in QTc interval (Δ QTc) from baseline (msec). (B) Proportion of patients experiencing QTc prolongation (>500ms or Δ QTc >60ms). (C) Fatal cardiac complication after hydroxychloroquine administration (torsades de pointes, cardiac arrest, and severe ventricular arrhythmia). (D) Non-cardiac serious adverse events. Effect estimates are presented in odds ratios (OR) and mean differences (MD) with 95% CI. Pharmacological agents are ranked by surface under the cumulative ranking curve (SUCRA) value. CAD = coronary artery disease. CHD = congestive heart disease. HQ = hydroxychloroquine.

Table 1. Studies included for analysis of QT prolongation and fatal cardiac complications after taking hydroxychloroquine alone or hydroxychloroquine with azithromycin.

Study	Baseline characteristics	Assessed fatal cardiac complications	Incidence (%)
Studies including relatively high portion of patients with poor cardiac function (>10% of patients have CAD/CHD*)			
Rosenberg et al.	<p>Proportion of patients with cardiovascular comorbidities was high at baseline (approximately 30%), and proportions of cardiovascular comorbidities were significantly different between groups in crude analysis. However, adjustments were made for sex, age category (<65 vs ≥65 years), diabetes, any chronic lung disease, cardiovascular disease, abnormal chest imaging, respiration rate >22/min, O₂ saturation <90%, elevated creatinine, and AST >40 U/L. Adjusted odds ratios for prolonged QT interval were presented.</p> <p>Obesity was significantly higher in pharmacologic treatment groups (hydroxychloroquine, hydroxychloroquine, alone, and azithromycin alone) compared to control (neither drug). Obesity was not adjusted for.</p> <ul style="list-style-type: none"> - Median age 63 - Coronary heart disease (12.7%) 	Cardiac arrest	<p>Hydroxychloroquine+Azithromycin: 15.5%</p> <p>Hydroxychloroquine alone: 13.6%</p> <p>Azithromycin alone: 6.1%</p> <p>Neither drugs: 7.1%</p>
Mercurio et al.	<p>Baseline QTc interval was longer in the hydroxychloroquine group compared to hydroxychloroquine plus azithromycin group. Therefore, we used the change in QTc intervals (ΔQTc) in each group for analysis.</p> <ul style="list-style-type: none"> - Mean age 60.1 - Coronary heart disease (11.1%) and atrial fibrillation (13.3%) 	Torsades de pointes	<p>Hydroxychloroquine+Azithromycin: 1.8%</p> <p>Hydroxychloroquine: 0%</p>
Ramireddy et al.	<p>Baseline QTc intervals were significantly different between groups. Therefore, we used change in QTc intervals (posttreatment QTc-baseline QTc, ΔQTc) of each group for analysis.</p> <ul style="list-style-type: none"> - Mean age 62.3, mean BMI 27.8 - Heart failure (20%) 	Syncope, torades de pointes, or other lethal arrhythmias	<p>Azithromycin alone: 0%</p> <p>Hydroxychloroquine+Azithromycin: 0%</p>
Saleh et al.	<p>Sex, structural heart disease, cirrhosis, other medications known to cause QT prolongation were comparable between hydroxychloroquine and hydroxychloroquine plus azithromycin groups.</p>	Monomorphic ventricular arrhythmia	<p>Hydroxychloroquine: 2.4%</p> <p>Hydroxychloroquine+Azithromycin: 5.0%</p>

	<ul style="list-style-type: none"> - Mean age 58.5, mean BMI 28.2 - Mean ejection fraction (61.9%), coronary artery disease (11.4%) 		
Bessiere et al.	<p>ICU setting.</p> <ul style="list-style-type: none"> -Median age 68, median BMI 28 -Structural heart disease (20%) 	Severe ventricular arrhythmia including torades de pointes	Hydroxychloroquine: 0% Hydroxychloroquine+Azithromycin: 0%
Borba et al.	<p>Randomized controlled trial. Generally, baseline characteristics were well controlled between groups, but pre-existing heart disease was more frequent in the high dosage group (p value not provided).</p> <ul style="list-style-type: none"> - Mean age 51.1 - Heart disease (17.9%) in high dose hydroxychloroquine group 	Ventricular tachycardia	High dose hydroxychloroquine: 4.8% Standard dose hydroxychloroquine: 0%
Studies including relatively low portion of patients with poor cardiac function (<10% of patients have CAD/CHD*)			
Mahevas et al.	<p>Baseline characteristics were generally balanced and controlled (i.e., COPD/asthma, HF, CVD, DM, CKD, LC, immunosuppression).</p> <ul style="list-style-type: none"> - Median age 60 - Chronic heart failure (4%) 	Severe arrhythmia	Hydroxychloroquine: 1.1%(first-degree atrioventricular block) no hydroxychloroquine: 1.0%(left bundle branch block)
Tang et al.	<p>Randomized controlled trial. Mild to moderate patients with low rate of cardiovascular comorbidity presence.</p> <ul style="list-style-type: none"> - Mean age 46.1, BMI 23.5 - Hypertension was presented in 6% of patients, and the prevalence of structural heart disease is expected to be less than 6% 	Severe arrhythmia	High dose hydroxychloroquine: 0% No hydroxychloroquine: 0%
Kim et al.	<p>Patients in the conservative treatment group had milder baseline features than patients in the hydroxychloroquine plus azithromycin group.</p> <ul style="list-style-type: none"> - Mean age 42.2 and mean BMI 23 - Very low prevalence of cardiovascular comorbidities, perhaps due to young age. 	Cardiac arrest	Hydroxychloroquine+Azithromycin: 0% No hydroxychloroquine: 0%
Boulware et al.	<p>Randomized controlled trial. Mild patient group.</p>	Cardiac arrhythmia	High dose hydroxychloroquine: 0% No hydroxychloroquine: 0%

	<p>Only the adverse event-related data from this study was used in this network meta-analysis, as this study investigates the effect of hydroxychloroquine as a prophylactic measure which is not the focus of our meta-analysis.</p> <ul style="list-style-type: none"> - Median age 41 - Cardiovascular disease (0.7%, not include hypertension) 		
--	--	--	--

CAD/CHD: coronary artery disease / congestive heart disease.

COPD: chronic obstructive pulmonary disease. HF: heart failure. CVD: cardiovascular disease. DM: diabetes mellitus. LC: liver cirrhosis

Table 2. Certainty of evidence evaluated with Grading of Recommendations Assessment, Development, and Evaluation (GRADE) framework

Comparisons (vs. Control)	Effect size (95% CI)	Study design (starting point)	Risk of bias	Inconsistency	Indirectness	Imprecision	Publication bias	GRADE
Mortality in moderate to severe patients (non-ICU at admission)								
Ruxolitinib	OR 0.13 (0.01, 2.72)	RCT (high)	No downgrade	Downgrade*	No downgrade	Downgrade	No downgrade	Low
Interferon-b1a	OR 0.13 (0.01, 2.94)	RCT (high)	No downgrade	Downgrade*	No downgrade	Downgrade	No downgrade	Low
Tocilizumab	OR 0.31 (0.18, 0.54)	Observational study (low)	No downgrade	No downgrade	No downgrade	No downgrade	No downgrade	Low
Anakinra	OR 0.30 (0.11, 0.80)	Observational study (low)	No downgrade	Downgrade*	No downgrade	No downgrade	No downgrade	Very low
Convalescent plasma	OR 0.17 (0.01, 3.93)	RCT (high)	No downgrade	Downgrade*	No downgrade	Downgrade	No downgrade	Low
High dose corticosteroid	OR 0.44 (0.17, 1.14)	Observational study (low)	No downgrade	No downgrade	No downgrade	No downgrade	No downgrade	Low
Azithromycin	OR 0.50 (0.24, 1.06)	Observational study (low)	No downgrade	Downgrade*	No downgrade	No downgrade	No downgrade	Very low
Hydroxychloroquine plus azithromycin plus zinc	OR 0.56 (0.28, 1.06)	Observational study (low)	No downgrade	Downgrade*	Downgrade	No downgrade	No downgrade	Very low
High dose IVIG	OR 0.48 (0.02, 9.79)	Observational study (low)	No downgrade	Downgrade*	No downgrade	Downgrade	No downgrade	Low‡
Remdesivir	OR 0.65 (0.38, 1.11)	RCT (high)	No downgrade	No downgrade	No downgrade	No downgrade	No downgrade	High
Lopinavir-Ritonavir plus arbidol	OR 0.62 (0.03, 11.65)	Observational study (low)	Downgrade	Downgrade*	Downgrade	Downgrade	No downgrade	Very low
Lopinavir-Ritonavir	OR 0.71 (0.33, 1.53)	RCT (high)	No downgrade	Downgrade*	No downgrade	No downgrade	No downgrade	Moderate
Hydroxychloroquine	OR 0.92 (0.73, 1.16)	Observational study (low)	No downgrade	No downgrade	No downgrade	No downgrade	No downgrade	Low
Hydroxychloroquine plus azithromycin	OR 1.13 (0.85, 1.52)	Observational study (low)	No downgrade	No downgrade	No downgrade	No downgrade	No downgrade	Low
IVIG	OR 1.76 (0.33, 9.32)	Observational study (low)	No downgrade	Downgrade*	No downgrade	Downgrade	No downgrade	Low‡
Corticosteroid	OR 1.55 (0.75, 3.19)	Observational study (low)	No downgrade	Downgrade*	No downgrade	No downgrade	No downgrade	Low‡
Mortality in critically ill patients (ICU)								
High dose IVIG	OR 0.13 (0.04, 0.42)	Observational study (low)	No downgrade	Downgrade*	No downgrade	No downgrade	No downgrade	Low‡
a-Lipoic acid	OR 0.17 (0.02, 1.46)	RCT (high)	No downgrade	Downgrade*	No downgrade	Downgrade	No downgrade	Low
Interferon-b1a	OR 0.47 (0.13, 1.65)	RCT (high)	No downgrade	Downgrade*	No downgrade	Downgrade	No downgrade	Low
Tocilizumab	OR 0.67 (0.59, 0.91)	Observational study (low)	No downgrade	No downgrade	No downgrade	No downgrade	No downgrade	Low
Convalescent plasma	OR 0.72 (0.23, 2.29)	RCT (high)	No downgrade	Downgrade*	No downgrade	Downgrade	No downgrade	Low
IVIG	OR 0.73 (0.26, 2.02)	Observational study (low)	No downgrade	Downgrade*	No downgrade	Downgrade	No downgrade	Low‡
Remdesivir	OR 0.92 (0.50, 1.69)	RCT (high)	No downgrade	Downgrade*	No downgrade	No downgrade	No downgrade	Moderate
Corticosteroid	OR 2.40 (1.02, 5.61)	Observational study (low)	No downgrade	No downgrade	No downgrade	Downgrade	No downgrade	Low‡
Progression to severe course (progress to severe pneumonia or admission to ICU)								
Ruxolitinib	OR 0.09 (0.00, 1.89)	RCT (high)	No downgrade	Downgrade*	No downgrade	Downgrade	No downgrade	Low
Anakinra	OR 0.22 (0.09, 0.54)	Observational study (low)	No downgrade	Downgrade*	No downgrade	No downgrade	No downgrade	Very low
Remdesivir	OR 0.31 (0.18, 0.55)	RCT (high)	No downgrade	No downgrade	No downgrade	No downgrade	No downgrade	High
Tocilizumab	OR 0.32 (0.16, 0.65)	Observational study (low)	No downgrade	No downgrade	No downgrade	No downgrade	No downgrade	Low
Arbidol plus interferon-a	OR 0.23 (0.01, 5.29)	Observational study (low)	No downgrade	Downgrade*	No downgrade	Downgrade	No downgrade	Very low
Arbidol	OR 0.53 (0.15, 1.87)	RCT (high)	No downgrade	No downgrade	No downgrade	No downgrade	No downgrade	High
Lopinavir-Ritonavir plus interferon-a	OR 0.62 (0.12, 3.20)	Observational study (low)	No downgrade	Downgrade*	No downgrade	No downgrade	No downgrade	Very low

Hydroxychloroquine	OR 0.84 (0.44, 1.59)	Observational study (low)	No downgrade	No downgrade	No downgrade	No downgrade	No downgrade	Low
Arbidol plus Lopinavir-Ritonavir plus interferon-a	OR 0.85 (0.16, 4.52)	Observational study (low)	No downgrade	Downgrade*	No downgrade	No downgrade	No downgrade	Very low
Interferon-a	OR 1.33 (0.15, 11.79)	Observational study (low)	No downgrade	Downgrade*	No downgrade	Downgrade	No downgrade	Very low
Lopinavir-Ritonavir	OR 1.23 (0.41, 3.73)	Observational study (low)	No downgrade	No downgrade	No downgrade	No downgrade	No downgrade	Low
Lopinavir-Ritonavir plus arbidol	OR 1.66 (0.29, 9.55)	Observational study (low)	Downgrade	No downgrade	No downgrade	Downgrade	No downgrade	Very low
Hydroxychloroquine plus azithromycin plus zinc	OR 3.08 (0.12, 81.00)	Observational study (low)	No downgrade	Downgrade*	Downgrade	Downgrade	No downgrade	Very low
Baloxavir	OR 3.31 (0.12, 90.72)	RCT (high)	No downgrade	Downgrade*	No downgrade	Downgrade	No downgrade	Low
Corticosteroid	OR 4.39 (0.46, 41.41)	Observational study (low)	No downgrade	Downgrade*	No downgrade	Downgrade	No downgrade	Very low
Hydroxychloroquine plus azithromycin	OR 5.65 (0.22, 144.76)	Observational study (low)	No downgrade	No downgrade	No downgrade	Downgrade	No downgrade	Very low
Favipiravir	OR 6.97 (0.29, 166.82)	RCT (high)	No downgrade	Downgrade*	No downgrade	Downgrade	No downgrade	Low
Lopinavir-Ritonavir plus azithromycin	OR 15.31 (0.29, 797.72)	Observational study (low)	No downgrade	Downgrade*	Downgrade	Downgrade	No downgrade	Very low
Viral clearance rate								
Convalescent plasma	OR 11.39 (3.91, 33.18)	RCT (high)	No downgrade	Downgrade*	No downgrade	Downgrade	No downgrade	Low
Meplazumab	OR 8.67 (1.53, 49.22)	Observational study (low)	No downgrade	Downgrade*	No downgrade	Downgrade	No downgrade	Very low
Hydroxychloroquine	OR 6.08 (2.74, 13.48)	Observational study (low)	No downgrade	No downgrade	No downgrade	No downgrade	No downgrade	Moderate‡
Lopinavir-Ritonavir plus arbidol	OR 4.29 (0.63, 29.32)	Observational study (low)	Downgrade	No downgrade	Downgrade	Downgrade	No downgrade	Very low
Lopinavir-Ritonavir plus navaferon	OR 1.70 (0.34, 8.43)	Observational study (low)	No downgrade	Downgrade*	Downgrade	Downgrade	No downgrade	Very low
Baloxavir	OR 1.50 (0.26, 8.80)	RCT (high)	No downgrade	Downgrade*	No downgrade	Downgrade	No downgrade	Low
Navaferon	OR 0.95 (0.20, 4.59)	RCT (high)	No downgrade	Downgrade*	Downgrade	Downgrade	No downgrade	Very low
Favipiravir	OR 0.80 (0.13, 4.87)	RCT (high)	No downgrade	Downgrade*	No downgrade	Downgrade	No downgrade	Low
Arbidol	OR 0.84 (0.26, 2.76)	RCT (high)	No downgrade	Downgrade*	No downgrade	Downgrade	No downgrade	Low
Lopinavir-Ritonavir	OR 0.78 (0.24, 2.57)	RCT (high)	No downgrade	No downgrade	No downgrade	Downgrade	No downgrade	Moderate
High dose hydroxychloroquine	OR 0.58 (0.31, 1.12)	RCT (high)	No downgrade	Downgrade*	No downgrade	No downgrade	No downgrade	Moderate
Time to viral clearance (days)								
Meplazumab	MD -10.00 (-16.93, -3.07)	Observational study (low)	No downgrade	Downgrade*	No downgrade	Downgrade	No downgrade	Very low
Hydroxychloroquine	MD -3.84 (-5.78, -1.90)	Observational study (low)	No downgrade	No downgrade	No downgrade	No downgrade	No downgrade	Moderate‡
Favipiravir	MD -3.45 (-6.85, -0.05)	RCT (high)	No downgrade	Downgrade*	No downgrade	No downgrade	No downgrade	Moderate

Lopinavir-Ritonavir plus navaferon	MD -0.28 (-3.01, 2.45)	RCT (high)	No downgrade	Downgrade*	Downgrade	No downgrade	No downgrade	Low
Oseltamivir	MD 0.15 (-2.60, 2.90)	Observational study (low)	No downgrade	Downgrade*	No downgrade	No downgrade	No downgrade	Very low
LMWH	MD 0.28 (-9.10, 9.66)	Observational study (low)	No downgrade	Downgrade*	No downgrade	Downgrade	No downgrade	Very low
Navaferon	MD 0.62 (-2.10, 3.34)	RCT (high)	No downgrade	Downgrade*	Downgrade	No downgrade	No downgrade	Low
Ruxolitinib	MD 0.72 (-5.50, 6.93)	RCT (high)	No downgrade	Downgrade*	No downgrade	Downgrade	No downgrade	Low
Hydroxychloroquine plus arbidol	MD 1.26 (-9.55, 12.07)	Observational study (low)	No downgrade	Downgrade*	No downgrade	Downgrade	No downgrade	Very low
High dose hydroxychloroquine	MD 1.00 (-2.57, 4.57)	RCT (high)	No downgrade	Downgrade*	No downgrade	No downgrade	No downgrade	Moderate
Arbidol	MD 1.06 (-0.96, 3.08)	RCT (high)	No downgrade	No downgrade	No downgrade	No downgrade	No downgrade	High
Lopinavir-Ritonavir	MD 1.62 (-0.29, 3.53)	RCT (high)	No downgrade	No downgrade	No downgrade	No downgrade	No downgrade	High
Baloxavir	MD 7.46 (-10.10, 25.02)	RCT (high)	No downgrade	Downgrade*	No downgrade	Downgrade	No downgrade	Low
Oseltamivir plus arbidol	MD 4.57 (-0.42, 9.56)	Observational study (low)	No downgrade	Downgrade*	No downgrade	No downgrade	No downgrade	Very low
Lopinavir-Ritonavir plus arbidol	MD 4.34 (0.80, 7.88)	Observational study (low)	Downgrade	No downgrade	No downgrade	No downgrade	No downgrade	Very low
Δ QTc interval from baseline (msec) of HQ plus AZ and AZ alone compared to ΔQTc of control (HQ alone)								
Hydroxychloroquine plus azithromycin (vs. HQ)	MD 20.97 (12.60, 28.98)	Observational study (low)	No downgrade	No downgrade	No downgrade	No downgrade	No downgrade	Low
Azithromycin (vs. HQ)	OR 4.09 (-15.76, 23.94)	Observational study (low)	Downgrade	Downgrade*	Downgrade	Downgrade	No downgrade	Very low
Proportion of patients experiencing QTc prolongation (>500ms or delta >60ms)								
Hydroxychloroquine plus azithromycin	OR 1.85 (1.05, 3.26)	Observational study (low)	No downgrade	No downgrade	No downgrade	No downgrade	No downgrade	Low
High dose hydroxychloroquine	OR 2.12 (0.56, 8.07)	Observational study (low)	No downgrade	No downgrade	No downgrade	Downgrade	No downgrade	Very low
Hydroxychloroquine	OR 1.33 (0.78, 2.24)	Observational study (low)	No downgrade	No downgrade	No downgrade	No downgrade	No downgrade	Low
Azithromycin	OR 1.05 (0.56, 1.97)	Observational study (low)	Downgrade	No downgrade	No downgrade	No downgrade	No downgrade	Very low
Fatal cardiac complication after HQ (TdP, cardiac arrest, and severe ventricular arrhythmia) – overall study								
Hydroxychloroquine plus azithromycin	OR 2.25 (1.27, 3.99)	Observational study (low)	No downgrade	No downgrade	No downgrade	No downgrade	No downgrade	Low
High dose hydroxychloroquine	OR 1.95 (0.37, 10.28)	RCT (high)	No downgrade	No downgrade	No downgrade	Downgrade	No downgrade	Moderate
Hydroxychloroquine	OR 1.64 (0.91, 2.97)	Observational study (low)	No downgrade	No downgrade	No downgrade	No downgrade	No downgrade	Low
Azithromycin	OR 0.59 (0.27, 1.29)	Observational study (low)	No downgrade	No downgrade	No downgrade	Downgrade	No downgrade	Very low
Fatal cardiac complication after HQ (TdP, cardiac arrest, and severe ventricular arrhythmia) – studies with CAD/CHD <10% at baseline								
Hydroxychloroquine	OR 1.16 (0.07, 19.00)	Observational study (low)	No downgrade	Downgrade*	No downgrade	Downgrade	No downgrade	Very low
Hydroxychloroquine plus azithromycin	OR 1.00 (0.06, 16.89)	Observational study (low)	No downgrade	Downgrade*	No downgrade	Downgrade	No downgrade	Very low
High dose	OR 1.00 (0.14, 7.15)	RCT (high)	No downgrade	No downgrade	No downgrade	Downgrade	No downgrade	Moderate

hydroxychloroquine									
Fatal cardiac complication after HQ (TdP, cardiac arrest, and severe ventricular arrhythmia) – studies with CAD/CHD >10% at baseline									
High dose hydroxychloroquine	OR 9.10 (0.40, 207.87)	RCT (high)	No downgrade	Downgrade*	No downgrade	Downgrade	No downgrade	No downgrade	Low
Hydroxychloroquine plus azithromycin	OR 2.26 (1.26, 4.05)	Observational study (low)	No downgrade	No downgrade	No downgrade	No downgrade	No downgrade	No downgrade	Low
Hydroxychloroquine	OR 1.77 (0.96, 3.27)	Observational study (low)	No downgrade	No downgrade	No downgrade	No downgrade	No downgrade	No downgrade	Low
Azithromycin	OR 0.63 (0.28, 1.41)	Observational study (low)	Downgrade	No downgrade	No downgrade	No downgrade	No downgrade	No downgrade	Very low
Non-cardiac serious adverse events									
Lopinavir-Ritonavir plus interferon plus ribavirin	OR 0.08 (0.00, 2.22)	RCT (high)	No downgrade	Downgrade*	Downgrade	Downgrade	No downgrade	No downgrade	Very low
Ruxolitinib	OR 0.09 (0.00, 1.89)	RCT (high)	No downgrade	Downgrade*	No downgrade	Downgrade	No downgrade	No downgrade	Low
Short-term used remdesivir	OR 0.36 (0.21, 0.60)	RCT (high)	No downgrade	Downgrade*	Downgrade	No downgrade	No downgrade	No downgrade	Low
Lopinavir-Ritonavir	OR 0.53 (0.28, 1.02)	RCT (high)	No downgrade	No downgrade	No downgrade	No downgrade	No downgrade	No downgrade	High
Lopinavir-Ritonavir plus navaferon	OR 0.53 (0.03, 9.60)	RCT (high)	No downgrade	No downgrade	Downgrade	Downgrade	No downgrade	No downgrade	Low
Navaferon	OR 0.53 (0.03, 9.60)	RCT (high)	No downgrade	No downgrade	Downgrade	Downgrade	No downgrade	No downgrade	Low
Meplazumab	OR 0.63 (0.04, 11.16)	Observational study (low)	No downgrade	Downgrade*	No downgrade	Downgrade	No downgrade	No downgrade	Very low
Remdesivir	OR 0.71 (0.55, 0.92)	RCT (high)	No downgrade	No downgrade	No downgrade	No downgrade	No downgrade	No downgrade	High
Hydroxychloroquine	OR 0.73 (0.30, 1.80)	Observational study (low)	Downgrade	No downgrade	No downgrade	No downgrade	No downgrade	No downgrade	Very low
Baloxavir	OR 1.00 (0.06, 16.76)	RCT (high)	No downgrade	No downgrade	No downgrade	Downgrade	No downgrade	No downgrade	Moderate
Favipiravir	OR 1.00 (0.06, 16.76)	RCT (high)	No downgrade	No downgrade	No downgrade	Downgrade	No downgrade	No downgrade	Moderate
a-Lipoic acid	OR 1.00 (0.06, 16.76)	RCT (high)	No downgrade	Downgrade*	No downgrade	Downgrade	No downgrade	No downgrade	Low
Hydroxychloroquine plus azithromycin	OR 1.00 (0.13, 7.58)	Observational study (low)	No downgrade	No downgrade	No downgrade	Downgrade	No downgrade	No downgrade	Very low
High dose hydroxychloroquine	OR 2.30 (1.01, 5.22)	RCT (high)	No downgrade	No downgrade	No downgrade	Downgrade	No downgrade	No downgrade	Moderate
Convalescent plasma	OR 5.10 (0.24, 108.86)	RCT (high)	No downgrade	Downgrade*	No downgrade	Downgrade	No downgrade	No downgrade	Low

OR: odds ratio. MD: mean difference. CAD: coronary artery disease. CHD: congestive heart disease.

*: downgraded by one when unable to evaluate inconsistency/heterogeneity due to lack of sufficient data (a single study). ‡upgrade by one for dose-response gradient.

Rationale:

Study design: If randomized trials form the evidence base, the quality rating starts at “high”. If observational studies form the evidence, base the quality rating starts at “low”.

Risk of bias: Downgraded for failure to conceal random allocation or blind participants in randomized controlled trials or failure to adequately control for confounding in observational studies.

Inconsistency: Downgraded if heterogeneity represented by I^2 statistics or global inconsistency (Q statistic to assess consistency under the assumption of a full design-by-treatment interaction random effects model) was high.

Indirectness: Downgraded when assumption of transitivity is challenged, or the result is solely derived from indirect comparisons.

Imprecision: Downgraded when confidential interval (CI) is too large.

Publication bias: Downgraded when substantial asymmetry is observed in funnel plot or $p < 0.05$ in egger’s test.

GRADE Definition (suggested by Puhan et al. in “A GRADE Working Group approach for rating the quality of treatment effect estimates from network meta-analysis”):

High quality: We are very confident that the true effect lies close to that of the estimate of the effect.

Moderate quality: We are moderately confident in the effect estimate i.e. the true effect is likely to be close to the estimate of the effect, but there is a possibility that it is substantially different.

Low quality: Our confidence in the effect estimate is limited i.e. the true effect may be substantially different from the estimate of the effect.

Very low quality: We have very little confidence in the effect estimate i.e. the true effect is likely to be substantially different from the estimate of effect.

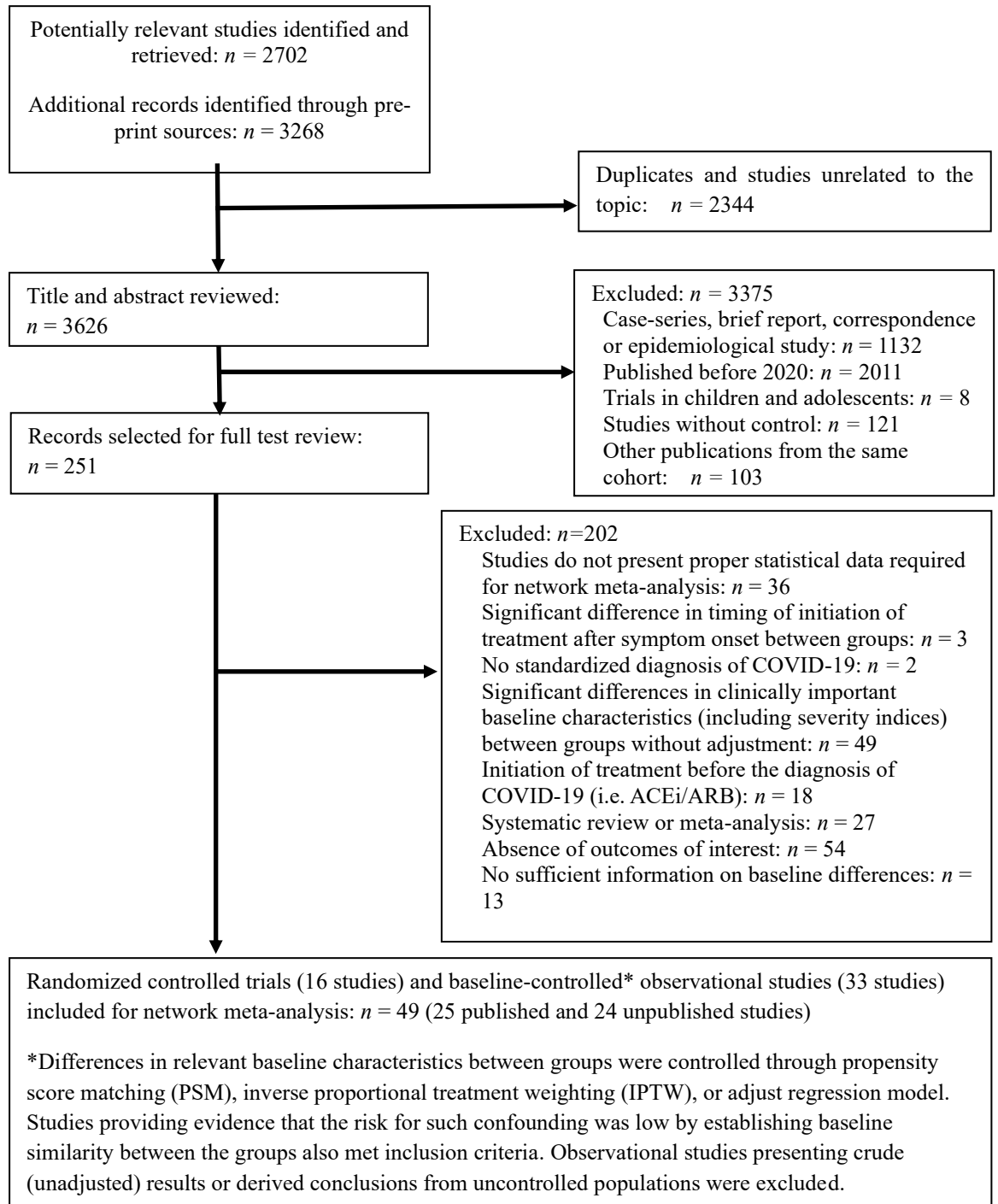
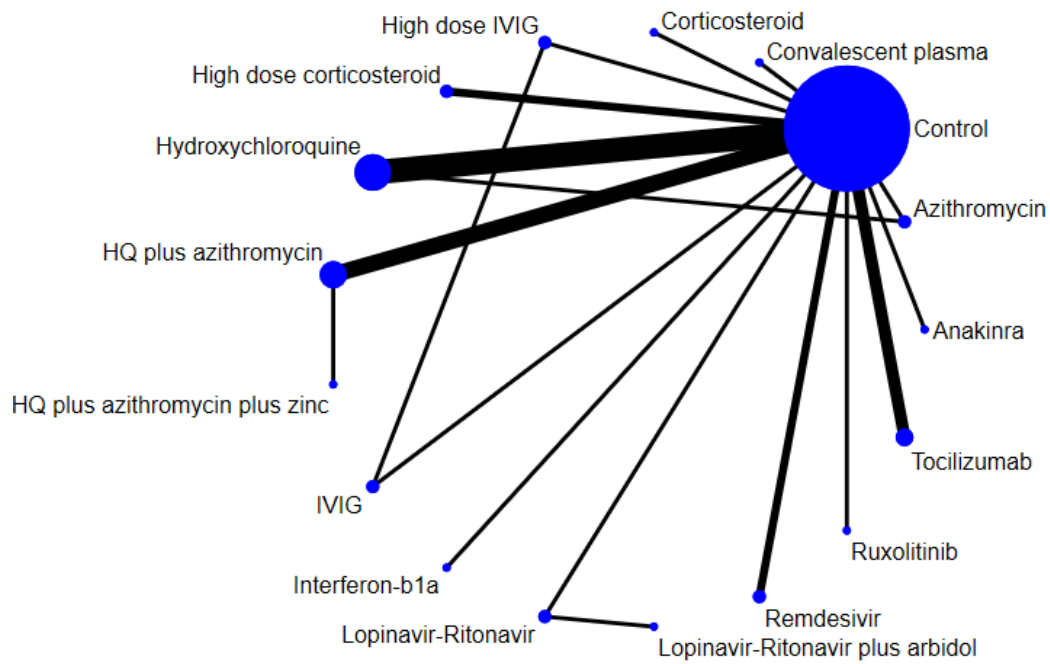
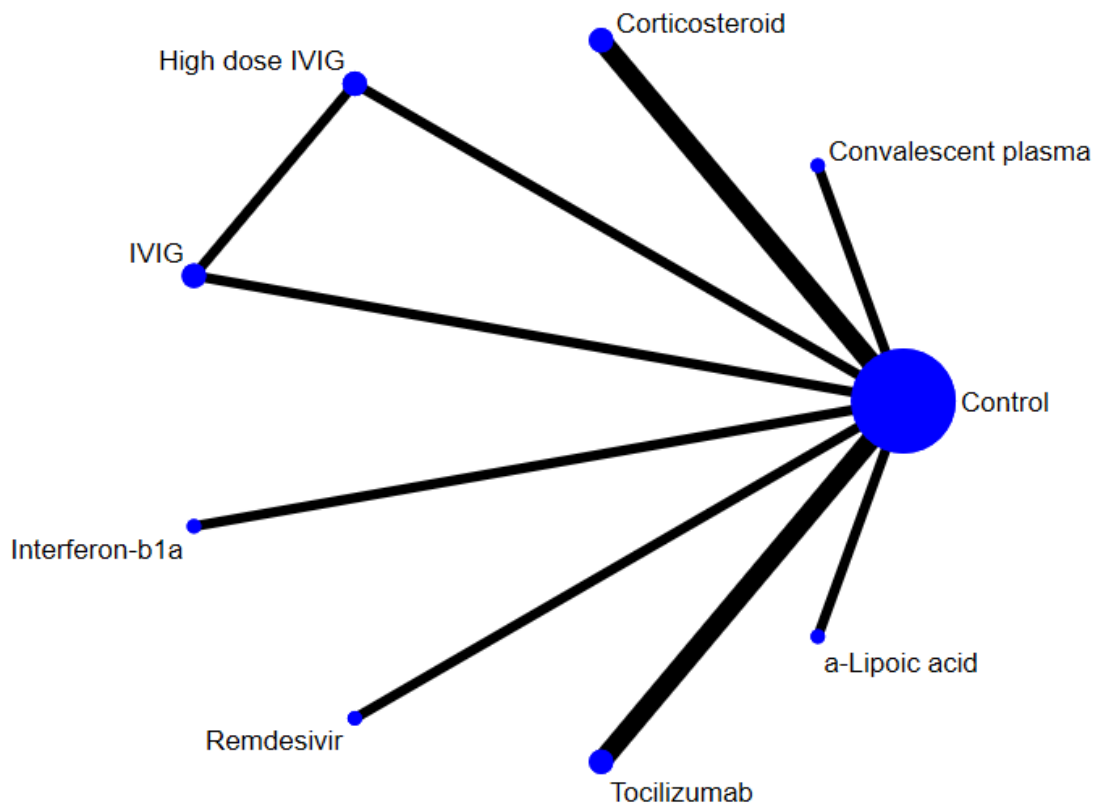


Figure 1. PRISMA diagram showing selection of articles for pairwise and network meta-analysis

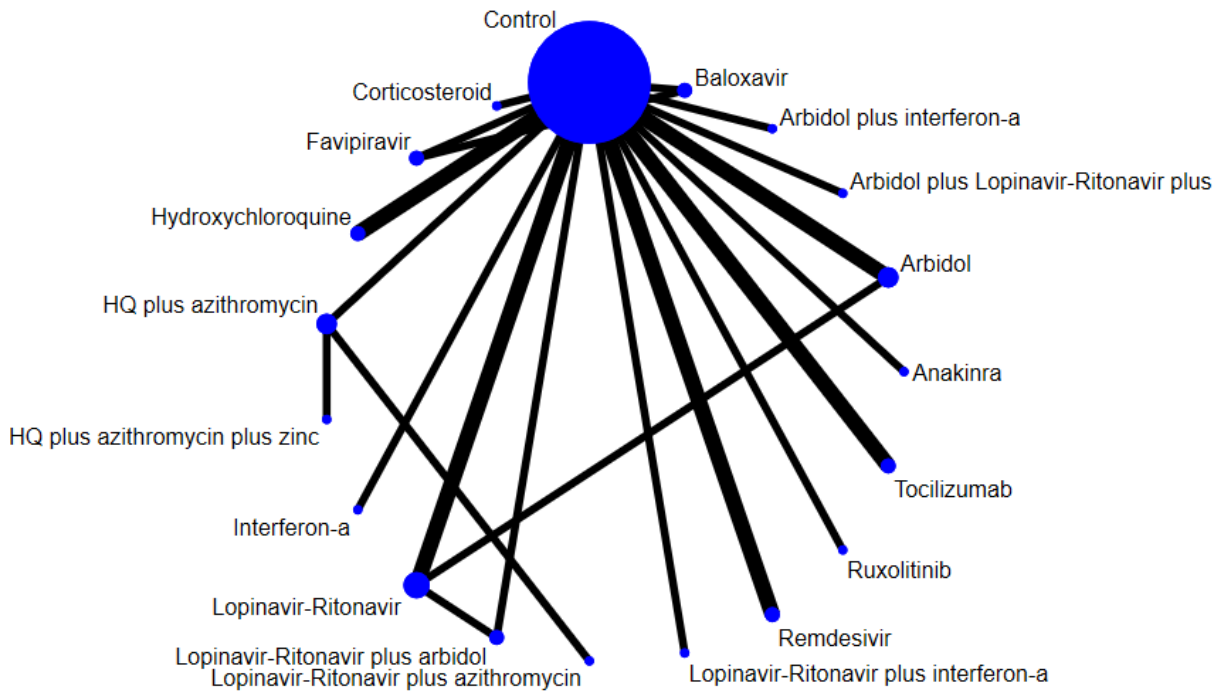
A Mortality for moderate-severe COVID-19 patients (non-ICU at admission)



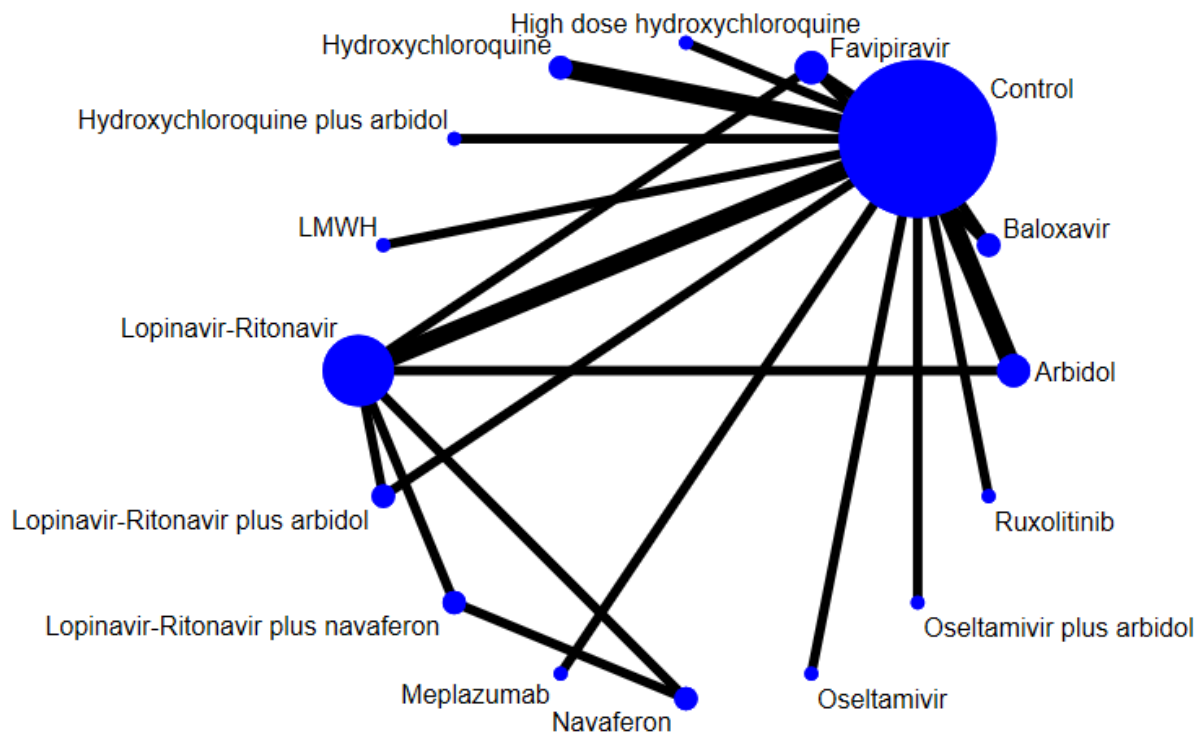
B Mortality for critically ill patients (ICU)



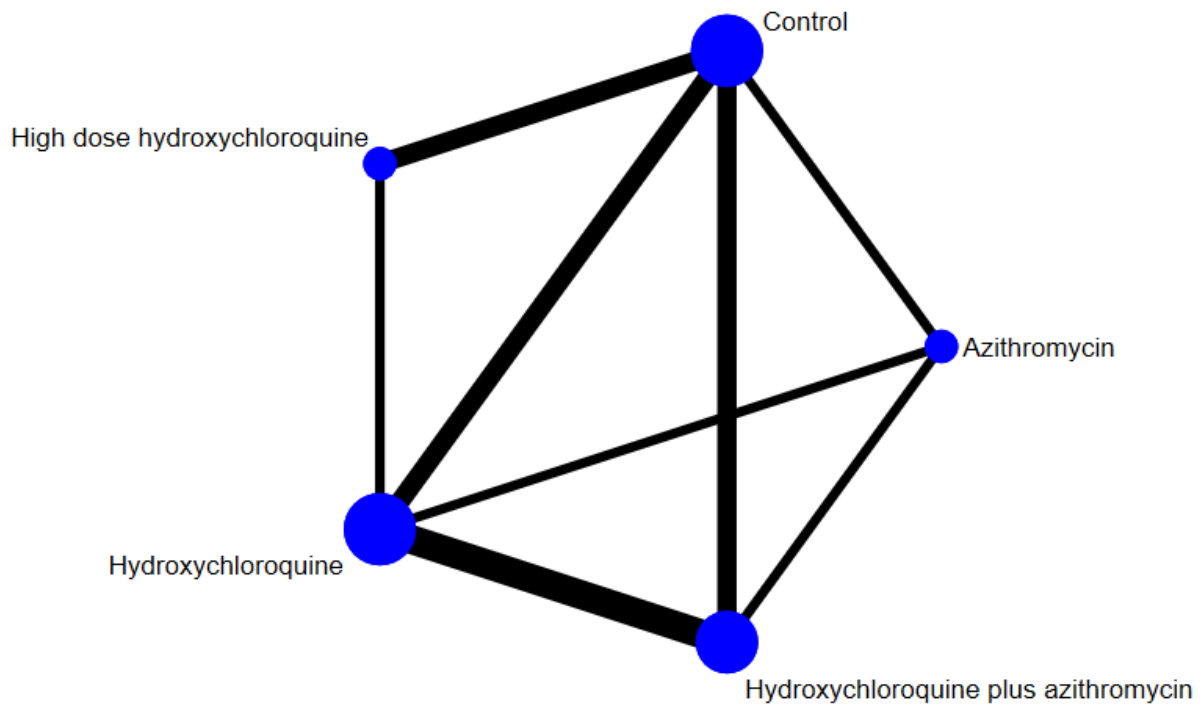
C Progression of disease to severe courses (i.e. progression to severe pneumonia and/or admission to ICU)



D Time to viral clearance (days)



E Fatal cardiac adverse event



F Non-cardiac serious adverse event

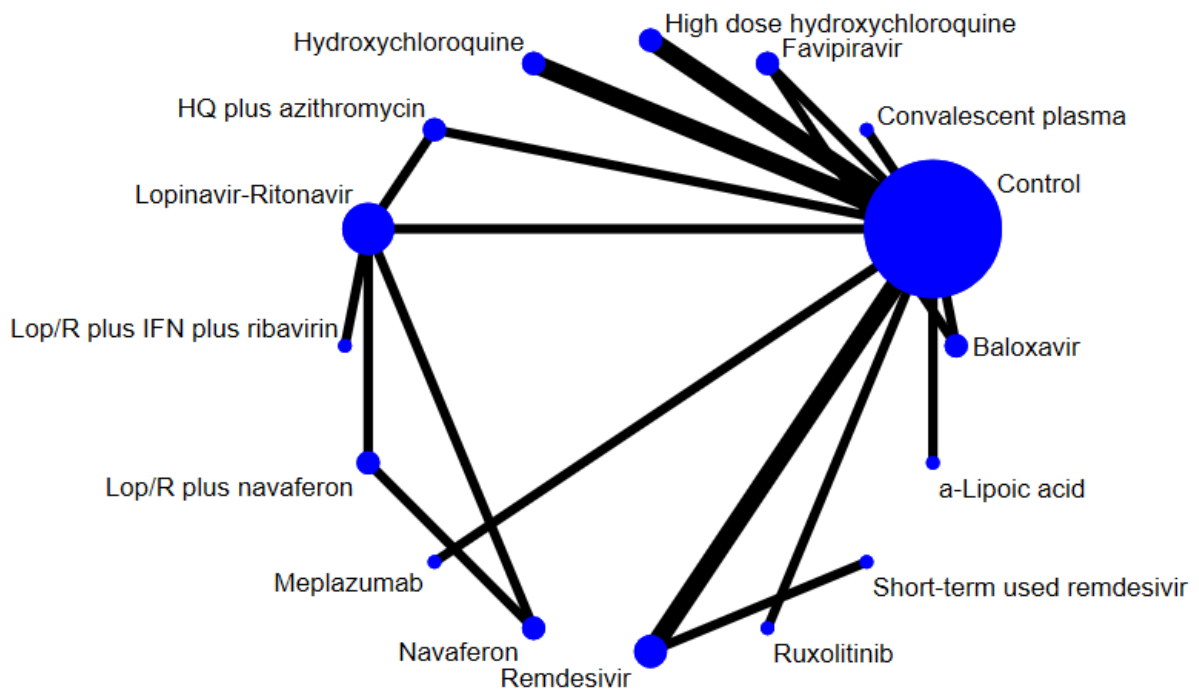
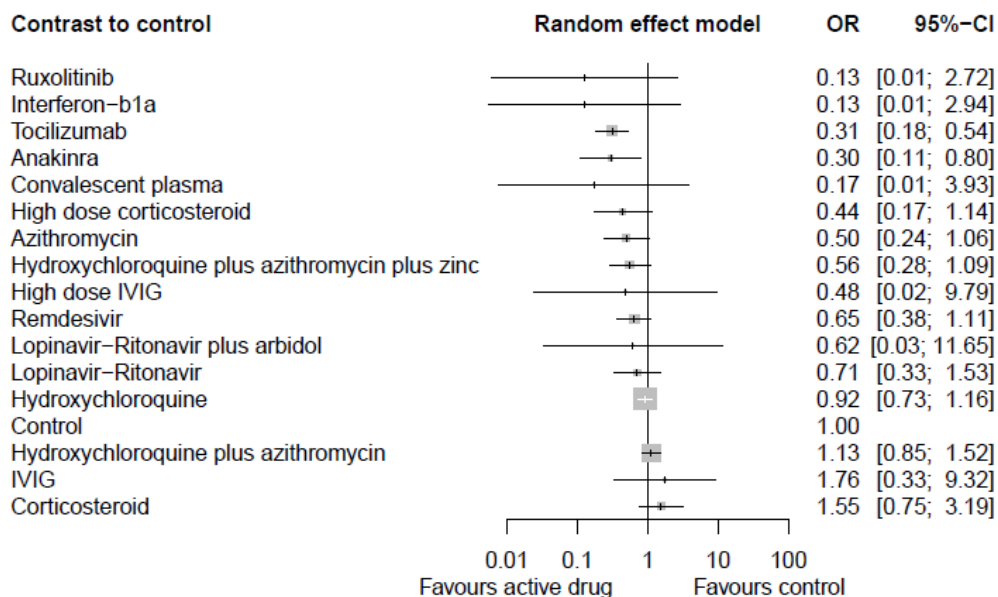


Figure 2: Network of eligible comparisons for primary outcomes

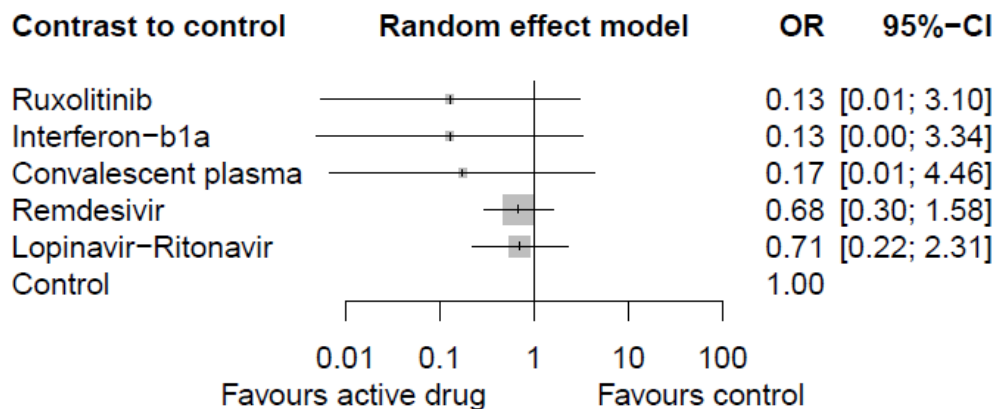
(A) Mortality for moderate-severe COVID-19 patients (non-ICU at admission). (B) mortality

for critically ill patients (ICU). (C) Progression of disease to severe courses (i.e. progression to severe pneumonia and/or admission to ICU). (D) Time to viral clearance (days). (E) Fatal cardiac adverse events (torsades de pointes, cardiac arrest, and severe ventricular arrhythmia). (F) Non-cardiac serious adverse events. Lines indicate direct comparison of agents, and the thickness of line corresponds to the number of trials in the comparison. Size of node corresponds to the number of studies that involve the intervention. HQ = Hydroxychloroquine. Lop/R = Lopinavir-Ritonavir. ICU = intensive care unit.

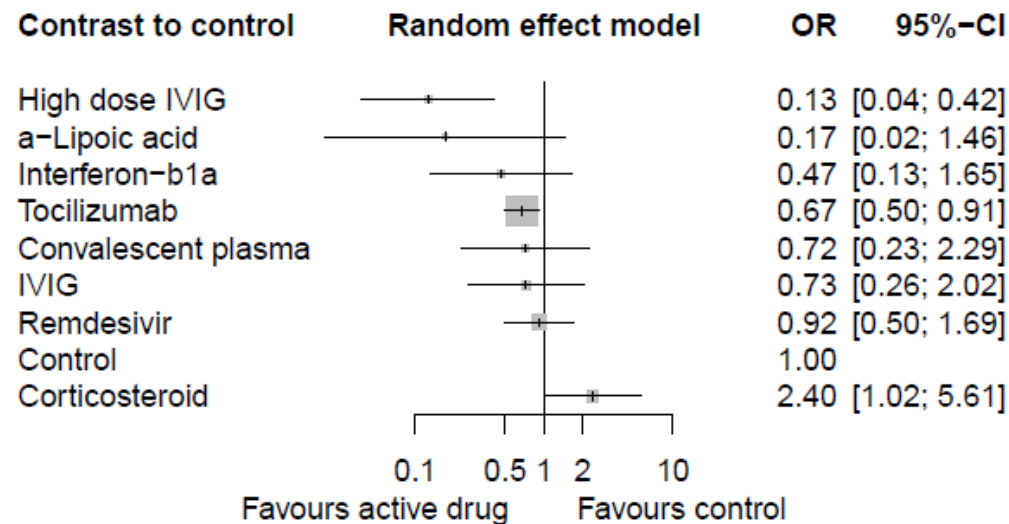
A Mortality for moderate-severe patients (non-ICU at admission) – all studies



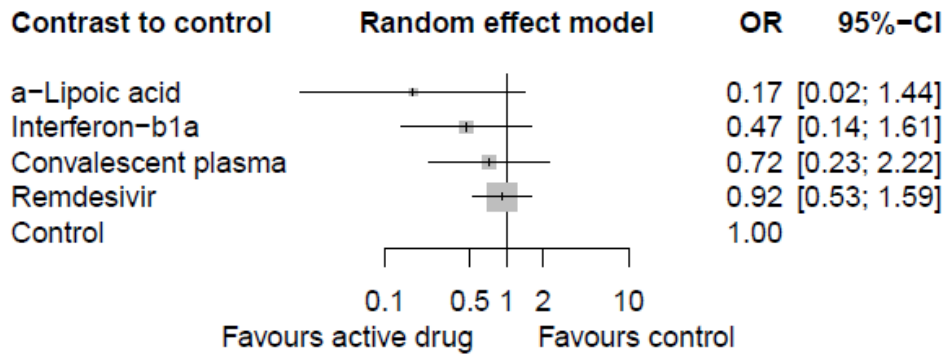
B Mortality for moderate-severe patients (non-ICU at admission) – RCTs only



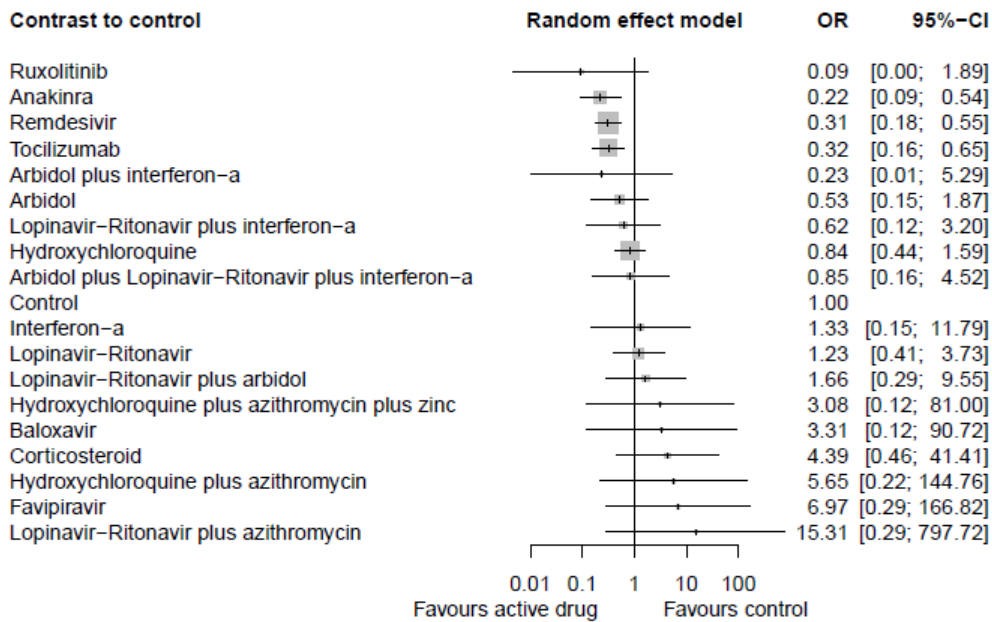
C Mortality for critically ill patients (ICU) – all studies



D Mortality for critically ill patients (ICU) – RCTs only



E. Progression to severe course (i.e. progression to severe pneumonia and/or admission to ICU) – all studies



F. Progression to severe course (i.e. progression to severe pneumonia and/or admission to ICU) – RCTs only

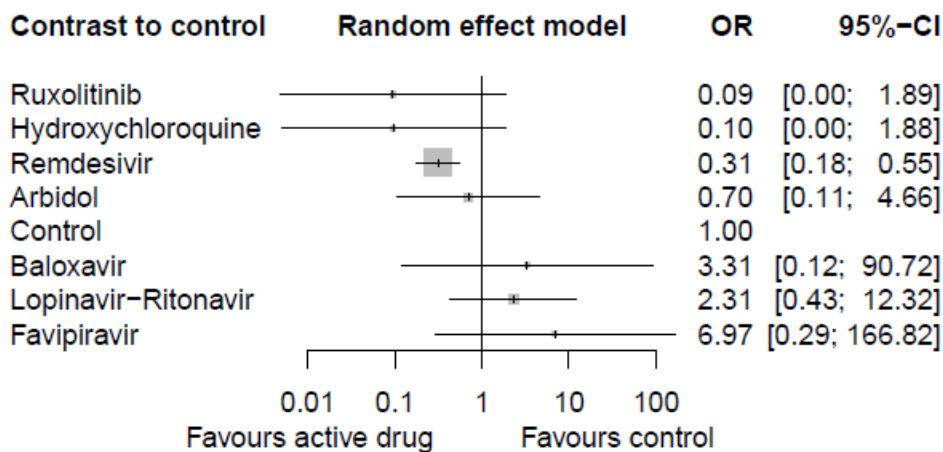
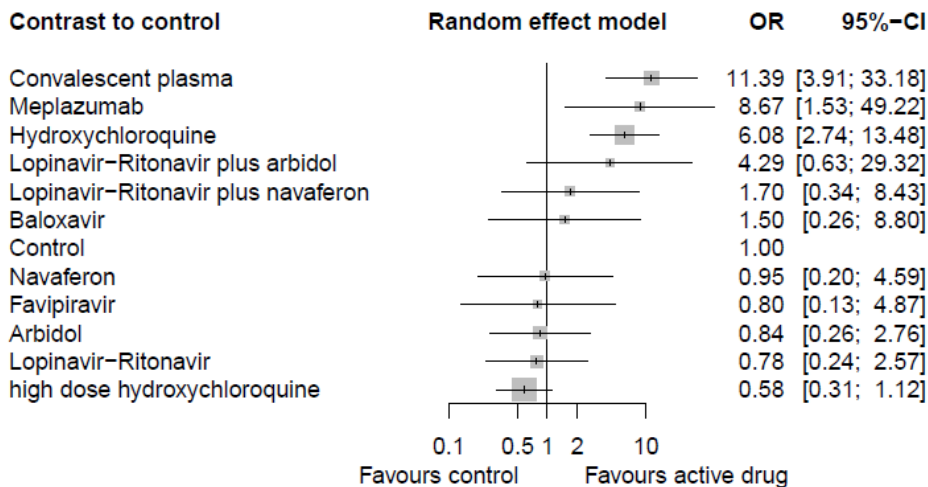


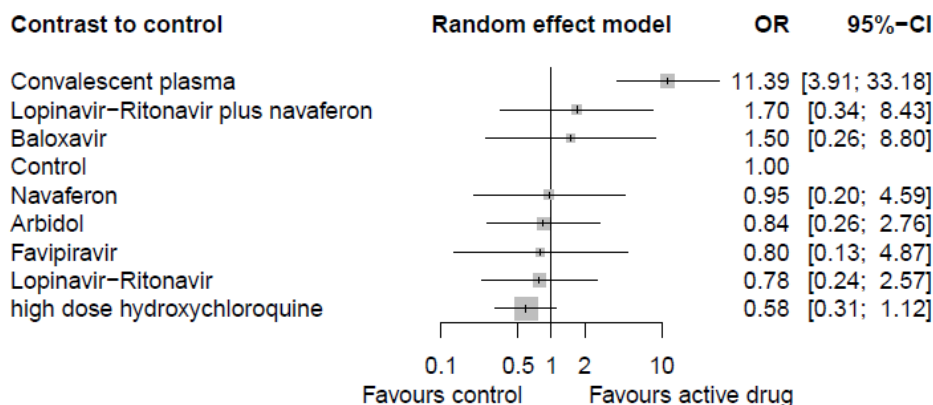
Figure 3: Network meta-analysis of pharmacological interventions compared with control (standard care) for efficacy outcomes.

Mortality for moderate-severe patients (non-ICU at admission) from (A) all studies and (B) RCTs only. Mortality for critically ill patients (ICU) from (C) all studies and (D) RCTs only. Progression to severe course (i.e. progression to severe pneumonia and/or admission to ICU) from (E) all studies and (F) RCTs only. Effect estimates are presented in odds ratios (OR) with 95% CI. Pharmacological agents are ranked by surface under the cumulative ranking curve (SUCRA) value. RCT = randomized controlled trial. ICU = intensive care unit.

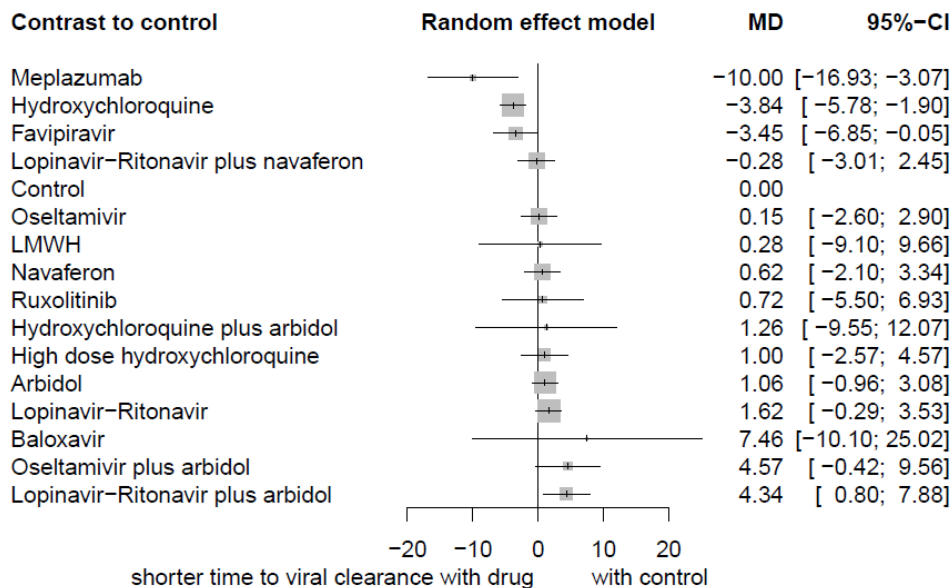
A Viral clearance rate – all studies



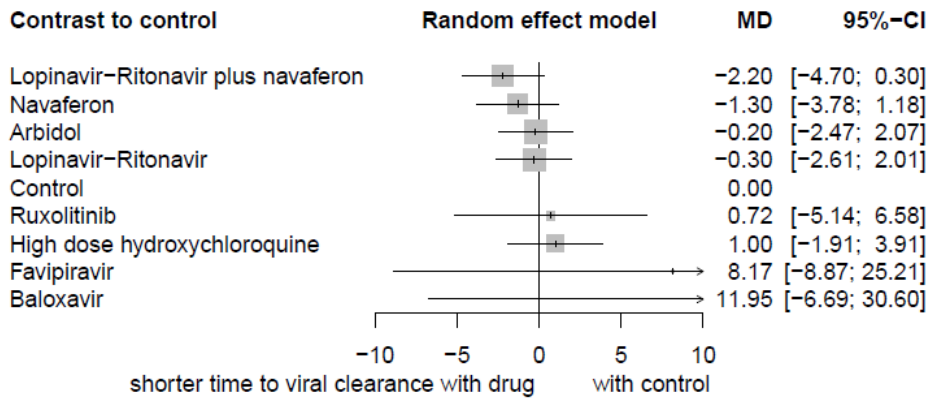
B Viral clearance rate – RCTs only



C Time to viral clearance (days) – all studies



D Time to viral clearance (days) – RCTs only



E Time to viral clearance from different initiation timings

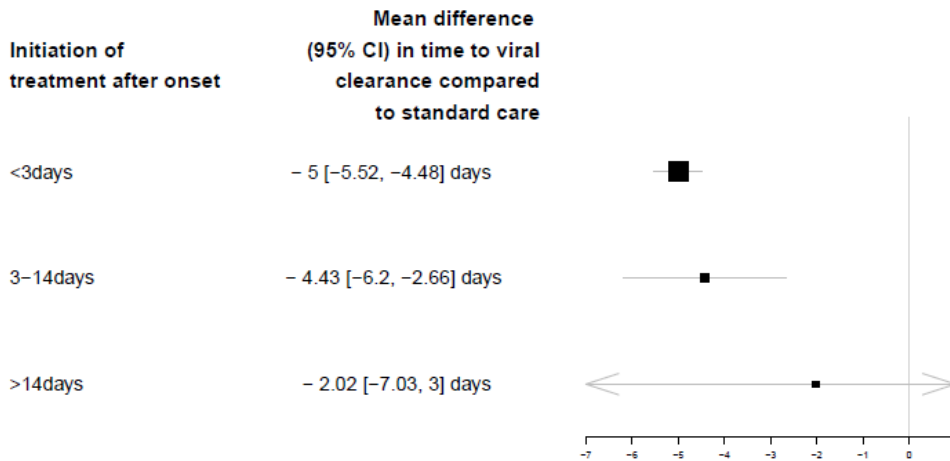
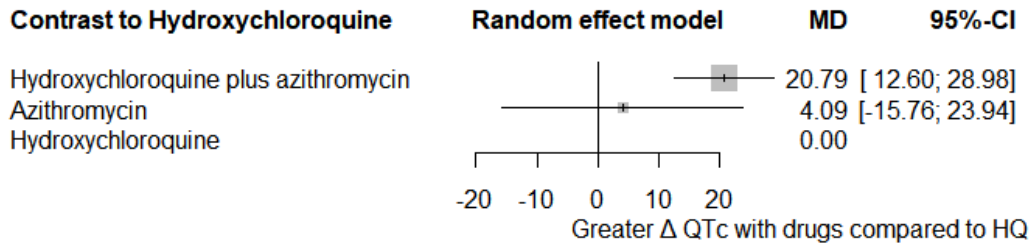


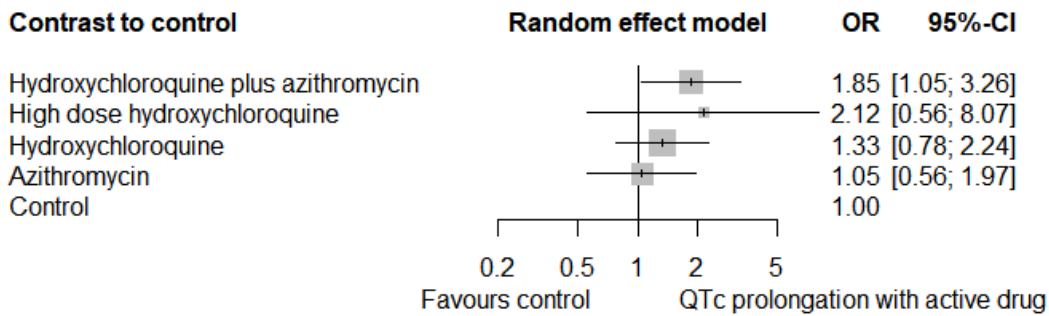
Figure 4: Network meta-analysis of pharmacological interventions compared with control (standard care) for viral clearance.

Viral clearance rate (proportion of patients converted to PCR-negative status) from (A) all studies and (B) RCTs only. Time to viral clearance (days) from (C) all studies and (D) RCTs only. (E) Time to viral clearance from different hydroxychloroquine treatment initiation timings after symptom onset. Effect estimates are presented in odds ratios (OR) for viral clearance rate and mean differences (MD) for time to viral clearance, with 95% CI. Pharmacological agents are ranked by surface under the cumulative ranking curve (SUCRA) value. RCT = randomized controlled trial.

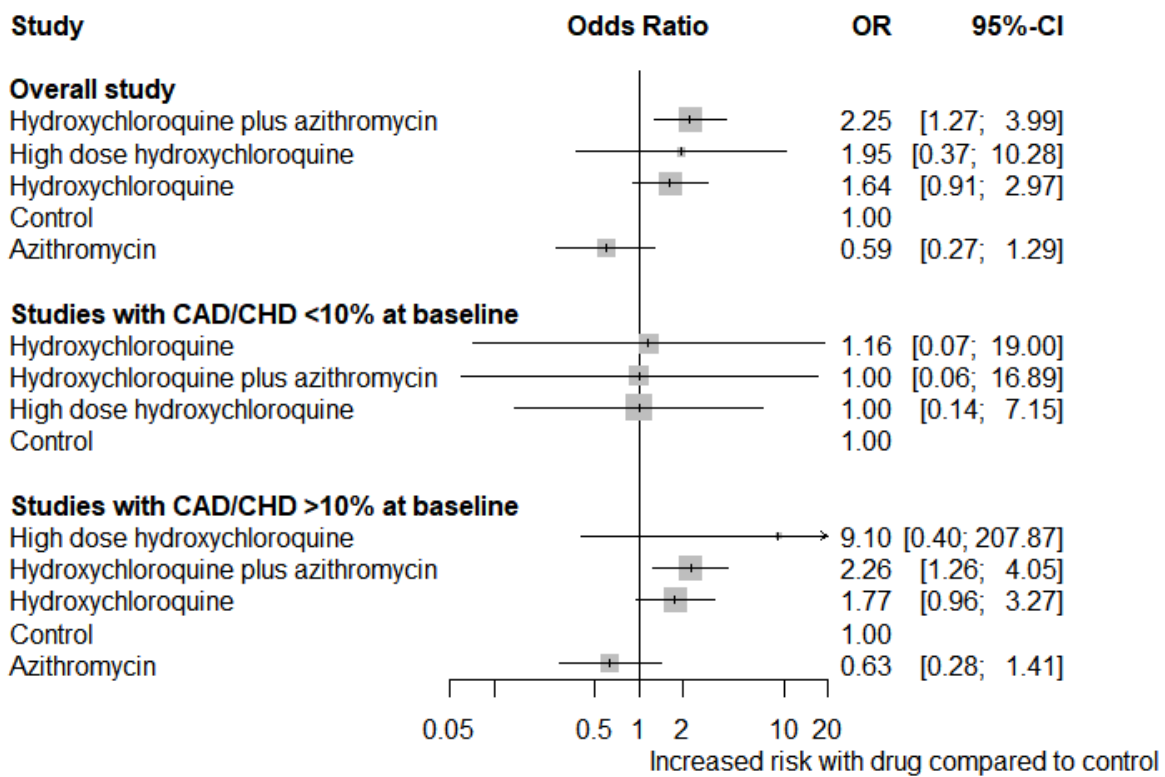
A Change in QTc interval from baseline (msec)



B Proportion of patients experiencing QTc prolongation



C Fatal cardiac complications



D Non-cardiac serious adverse events

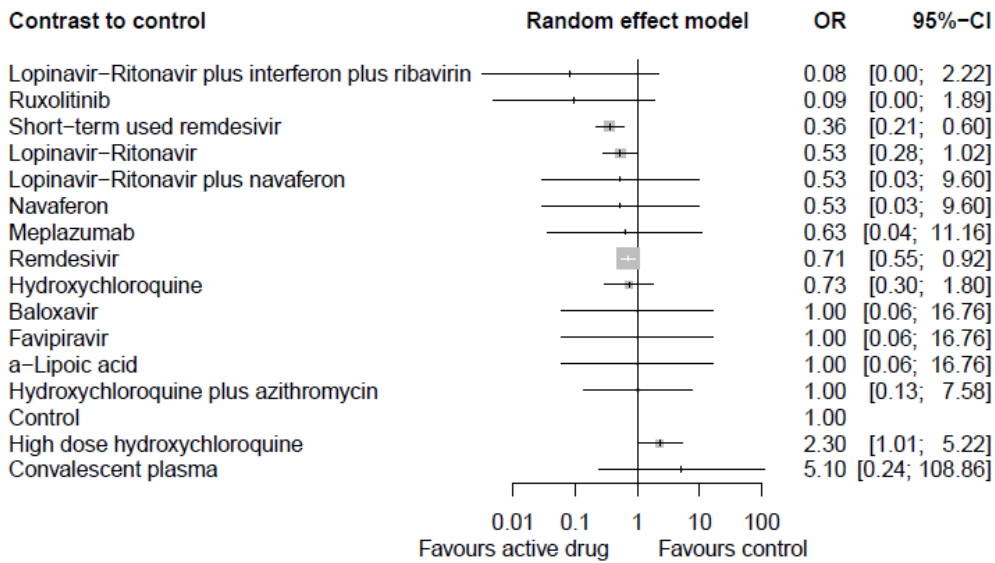


Figure 5: Network meta-analysis of safety of different pharmacological interventions.

(A) Change in QTc interval (Δ QTc) from baseline (msec). (B) Proportion of patients experiencing QTc prolongation (>500 ms or Δ QTc >60 ms). (C) Fatal cardiac complication after hydroxychloroquine administration (torsades de pointes, cardiac arrest, and severe ventricular arrhythmia). (D) Non-cardiac serious adverse events. Effect estimates are presented in odds ratios (OR) and mean differences (MD) with 95% CI. Pharmacological agents are ranked by surface under the cumulative ranking curve (SUCRA) value. CAD = coronary artery disease. CHD = congestive heart disease. HQ = hydroxychloroquine.