

1 **TITLE**

2 Associations of joint swelling, joint stiffness, and joint pain with physical activity in first-
3 degree relatives of patients with rheumatoid arthritis

4

5 **AUTHORS**

6 Jan M. Hughes-Austin¹, Joachim H. Ix², Samuel R. Ward¹, Michael H. Weisman³,
7 James R. O'Dell⁴, Ted R. Mikuls⁴, Jane H. Buckner⁵, Peter K. Gregersen⁶, Richard M.
8 Keating⁷, M. Kristen Demoruelle⁸, Kevin D. Deane⁸, V. Michael Holers⁸, Jill M. Norris⁹

9

10 **AFFILIATIONS**

11

12 1. Departments of Orthopaedic Surgery and Radiology, School of Medicine, University
13 of California, San Diego, La Jolla, California, USA

14 2. Division of Nephrology-Hypertension, Department of Medicine, University of
15 California, San Diego, La Jolla, California, USA

16 3. Division of Rheumatology, School of Medicine, Cedars Sinai Medical Center, Los
17 Angeles, California, USA

18 4. Division of Rheumatology, College of Medicine, University of Nebraska Medical
19 Center, Omaha, Nebraska, USA

20 5. Benaroya Research Institute, Seattle, Washington, USA

21 6. Feinstein Medical Research Institute, Manhasset, New York, USA

22 7. Scripps Health, La Jolla, California, USA

23 8. Department of Rheumatology, School of Medicine, University of Colorado Anschutz
24 Medical Campus, Aurora, Colorado, USA

1 9. Colorado School of Public Health, University of Colorado Anschutz Medical Campus,
2 Aurora, Colorado, USA

3

4 **CORRESPONDING AUTHOR**

5 Jan Hughes-Austin, PT, PhD

6 University of California, San Diego

7 Department of Orthopaedic Surgery

8 9500 Gilman Drive, Mail Code 0863

9 La Jolla, CA 92093

10 jhughesaustin@ucsd.edu

11

12

13 **FINANCIAL DISCLOSURES**

14

15 The authors have no financial support from commercial sources or conflicts of interest

16 to disclose.

1 **ABSTRACT**

2 **Background:** Physical activity (PA) in pre-clinical rheumatoid arthritis (RA) is
3 associated with lower RA risk and disease severity. Yet, PA in RA patients is less than
4 in counterparts without RA, which can be attributed partly to symptoms of inflammatory
5 arthritis. Therefore, we investigated whether joint swelling, stiffness, or pain were
6 associated with PA in first-degree relatives (FDRs) of RA patients, a population at
7 higher risk for future RA.

8 **Methods:** We evaluated associations of joint stiffness, joint swelling, and joint pain with
9 PA time in 268 FDRs with ≥ 2 visits over an average 1.2 years. Clinicians confirmed joint
10 swelling. Participants self-reported joint stiffness and/or pain. PA during a typical 24-
11 hour day was quantified via questionnaire, weighted to reflect metabolic expenditure,
12 where 24 hours was the minimum PA time. Linear mixed models evaluated associations
13 between symptoms and change in PA over time, adjusting for age, sex, race, body
14 mass index, smoking, and RA-related autoantibodies.

15 **Results:** Average weighted PA time was 37 ± 7 hours. In cross-sectional analysis, PA
16 time was 1.3 ± 0.9 hours higher in FDRs reporting joint pain ($p=0.15$); and 0.8 ± 1.6 and
17 0.4 ± 1 hours lower in FDRs with joint swelling ($p=0.60$) and stiffness ($p=0.69$),
18 respectively. Longitudinally, adjusting for baseline PA time, baseline symptoms were not
19 significantly associated with changes in PA time. However, on average over time, joint
20 stiffness and pain were associated with lower PA time ($p_{\text{interaction}}=0.0002$,
21 $p_{\text{interaction}}=0.002$), and joint swelling was associated with higher PA time
22 ($p_{\text{interaction}} < 0.0001$)

23 **Conclusion:** Baseline symptoms did not predict future PA time, but on average over
24 time, joint symptoms influenced PA time.

1 INTRODUCTION

2

3 Rheumatoid arthritis (RA) is a chronic systemic inflammatory disease that leads
4 to pain, joint destruction, disability, and reduced life expectancy. Physical activity is
5 encouraged in RA to facilitate joint mobility, physical function, and mitigate
6 cardiovascular disease;¹ yet it is significantly less than in counterparts without RA,^{2, 3}
7 where muscle strength just exceeds thresholds needed to maintain activities of daily
8 living.^{2, 3} Several indicators of RA disease activity, such as joint flares,⁴ pain level and
9 fatigue, reduced mobility, and stiffness,^{2, 5} have been inversely associated and
10 recognized as barriers to physical activity engagement.^{2, 4, 5}

11 Physical activity prior to RA has been associated with lower risk for RA, a milder
12 disease course, and less severe joint destruction.^{6, 7} Thus, physical activity could extend
13 the time until RA becomes clinically manifest, and presents a key opportunity to
14 intervene in the pre-clinical period. Further, beyond prevention, if individuals are
15 diagnosed with RA at a time when they have more physical activity, ability, and
16 strength, it may lead to them maintaining physical activity and independent living during
17 the course of the disease.

18 Pre-clinical RA is characterized by the development of autoantibodies, circulating
19 inflammatory markers, and signs and symptoms of inflammatory joint disease.⁸⁻¹⁰ It is
20 not known in people at risk for RA who exhibit pre-clinical RA features whether
21 inflammatory joint signs and symptoms are associated with more or less physical
22 activity time. Therefore, we hypothesized *a priori* that inflammatory joint symptoms such
23 as joint swelling, joint stiffness, and joint pain would be associated with less physical
24 activity time. Using first-degree relatives (FDRs) of RA patients from the Studies of the

- 1 Etiology of Rheumatoid Arthritis (SERA), a population without RA but at increased risk
- 2 for RA, we sought to determine whether joint swelling, joint stiffness, and joint pain are
- 3 associated with physical activity time at baseline and over time.
- 4

1 **METHODS**

2

3 **Studies of the Etiology of Rheumatoid Arthritis (SERA)**

4 Founded in 2003, SERA is a multi-center study designed to examine the role of
5 environmental and genetic factors in the development and progression of RA-related
6 autoimmunity, and to explore pre-clinical immunological changes and
7 pathophysiological processes in the absence of treatments or secondary complications
8 of active RA disease.⁹ The SERA cohort consists of FDRs [parent, sibling, or offspring]
9 of probands with RA, who are selected for this prospective study because of higher RA
10 risk. FDRs were recruited through probands [identified from academic centers,
11 Veterans' hospitals and rheumatology clinics or through responses to advertising] from
12 6 sites across the US [Denver, CO, Los Angeles, CA, Seattle, WA, Manhasset, NY,
13 Omaha, NE, and Chicago, IL]. FDRs were eligible to participate if they did not have an
14 RA diagnosis at the time of their initial visit, as defined by 1987 ACR Criteria,¹¹ and were
15 ≥ 18 years old. At research visits, FDRs completed disease and exposure assessment
16 questionnaires, underwent a standardized interview and 68-count joint examination by a
17 trained study clinician, and had blood drawn. FDRs positive for any RA-related
18 autoantibody at visits were seen annually while autoantibody negative FDRs were seen
19 every two years. Institutional Review Boards at each of the SERA sites approved this
20 study, and all participants provided written informed consent.

21 **Study Population**

22 In SERA, physical activity questions were not routinely asked until 2010, so we
23 used the first time an FDR answered this question, between 2010 and 2014, as their
24 "baseline" visit. There were 878 FDRs seen in clinic within this 4-year period who had

1 complete information regarding physical activity and the presence of joint swelling, joint
2 stiffness, or joint pain. Of these 878 FDRs, 268 FDRs had ≥ 2 clinic visits, which allowed
3 us to also investigate changes in PA over time. There were no significant differences
4 between this subset of 268 FDRs and the larger cohort of 878 FDRs with regards to
5 demographics and clinical characteristics. These 268 FDRs with multiple clinic visits
6 comprised our analysis dataset.

7 **RA-Related Inflammatory Joint Swelling or Symptoms**

8 Trained clinicians, blinded to autoantibody status, confirmed the presence of joint
9 swelling using a 68-count joint examination during clinic visits. Additional inflammatory
10 joint symptoms involving the same joints were indicated by the presence of self-reported
11 joint stiffness and pain during the same clinic visit. Consistent with Sparks and
12 colleagues, we included joints at RA-specific sites according to the ACR/EULAR 2010
13 classification for RA, i.e., any of the metacarpophalangeal (MCP), proximal
14 interphalangeal (PIP), or metatarsophalangeal (MTP) joints, wrist, as well as the elbow
15 due to its relative specificity for RA.^{12, 13}

16 **Physical Activity Time**

17 Hours sleeping, sitting, and performing slight [e.g., standing, walking], moderate
18 [e.g., household work], or heavy [e.g., heavy labor, intense exercise] activity during a
19 typical 24-hour period were obtained through questionnaire administered during clinic
20 visits, and were measured as a continuous score (Supplemental Table). Physical
21 activity hours were weighted to reflect metabolic expenditure, calculated as: Physical
22 Activity Score = $1.0 \cdot h_{\text{sleep}} + 1.1 \cdot h_{\text{sedentary}} + 1.5 \cdot h_{\text{slight}} + 2.4 \cdot h_{\text{moderate}} + 5.0 \cdot h_{\text{heavy}}$, with 24
23 hours representing the minimum possible score. For example, an individual who slept 8
24 hours, was sedentary for 9 hours, performed slight activity for 4 hours, moderate activity

1 for 2 hours, and heavy activity for 1 hour had a weighted physical activity score of 33.7
2 hours for that day. This physical activity score has been validated and used
3 previously.¹⁴

4 **Covariates**

5 Participants also underwent a complete examination and completed additional
6 questionnaires to obtain age, race/ethnicity, smoking history (current vs. not current and
7 pack-years), weight (kilograms) and height (meters), which allowed us to calculate body
8 mass index (BMI, kg/m²). Serum was also collected and used to measure RA-related
9 autoantibodies, specifically rheumatoid factor (RF) measured by nephelometry, RF
10 isotypes, IgM, IgG, and IgA, as well as anti-cyclic citrullinated peptide antibodies (anti-
11 CCP2 and anti-CCP3.1) as described previously.⁹

12 **Statistical Analysis**

13 We evaluated differences in demographics, autoantibody status, inflammatory
14 markers, and physical activity time in FDRs with and without joint swelling or
15 inflammatory joint symptoms using Student t-tests or Wilcoxon rank sum tests for
16 continuous variables and chi-square tests or Fisher's exact tests for categorical
17 variables. We used a cross-sectional study design with analysis of covariance among
18 268 FDRs to examine whether baseline exam inflammatory joint symptoms were
19 associated with baseline physical activity time. We then used a prospective study
20 design to evaluate whether baseline joint swelling or symptoms were associated with
21 physical activity over time, and whether changes in joint swelling or symptoms were
22 associated with changes in physical activity over time. For the longitudinal analyses, we
23 utilized linear mixed models, and adjusted for age, sex, race, BMI, smoking, and
24 positivity for RA-related autoantibodies. To determine whether changes in joint

1 symptoms were associated with changes in physical activity over time, we adjusted for
2 baseline PA and incorporated an interaction term with time into the model, as it
3 indicated whether there was an effect of time on the association between joint
4 symptoms and physical activity hours, accounting for multiple visits per FDR. We also
5 performed a sensitivity analysis for upper extremity joint swelling, stiffness, and pain, as
6 well as for lower extremity joint swelling, stiffness, and pain following the above
7 methods. All analyses were conducted in SAS version 9.4 (SAS Institute, Cary, North
8 Carolina) and p-values < 0.05 were considered statistically significant.

1 RESULTS

2

3 The 268 FDRs in this study had mean age of 50 ± 15 years at baseline, BMI of
4 28 ± 10 kg/m², and a mean 37 ± 7 weighted physical activity hours per day. Table 1
5 presents participant characteristics, stratified by present joint swelling. At baseline, 20
6 (7%) FDRs had joint swelling, 50 (19%) reported joint stiffness, and 84 (31%) reported
7 joint pain. These groups were not mutually exclusive with 11% reporting joint stiffness
8 and pain, 3% with joint swelling and reporting pain, 0% with joint swelling and reporting
9 stiffness, and 2% reporting all three – joint swelling, stiffness, and pain. FDRs with joint
10 swelling, compared to FDRs without joint swelling, were older and were more likely to
11 be anti-CCP2 and anti-CCP3.1 positive, and had slightly less physical activity time, a
12 difference that did not achieve statistical significance. FDRs with joint stiffness and pain,
13 however, had similar age, had similar autoantibody profiles, and had more physical
14 activity time compared to FDRs without joint stiffness and pain (data not shown).

15 Cross-sectional analysis of inflammatory joint symptoms at baseline showed that
16 after adjusting for age, sex, race, BMI, pack-years smoking, and positivity for RA-related
17 autoantibodies, FDRs reporting joint pain had 1.3 more physical activity hours than
18 FDRs without joint pain (38.1 vs 36.8 physical activity hours, respectively; $p=0.15$),
19 although this association was not statistically significant. In contrast, FDRs self-reporting
20 joint stiffness had 0.4 fewer physical activity hours than FDRs without joint stiffness
21 (36.8 vs 37.3 physical activity hours, respectively; $p=0.69$); and FDRs with joint swelling
22 documented by examination had 0.8 fewer physical activity hours than FDRs without
23 joint swelling (36.4 vs 37.2 physical activity hours, respectively; $p=0.60$). Neither of
24 these associations were statistically significant in fully adjusted analysis.

1 The average length of follow up was 1.2 years (range 14 days to 4.5 years). In
2 this longitudinal analysis, adjusting for baseline physical activity time, age, sex, race,
3 pack-years smoking, autoantibody status, and BMI, baseline joint symptoms were not
4 significantly associated with a change in physical activity hours over time (Figure 1).

5 Longitudinal analysis evaluating the interaction between joint signs and
6 symptoms and physical activity over time showed in fully adjusted models that FDRs
7 with subsequent occurrences of joint swelling had more physical activity hours over time
8 than FDRs without joint swelling ($p_{\text{interaction}} < 0.0001$; $\beta = 0.004 \pm 0.001$, $p < 0.0001$).
9 Conversely, FDRs reporting joint stiffness in subsequent clinic visits had fewer physical
10 activity hours over time compared to FDRs who did not report joint stiffness
11 ($p_{\text{interaction}} = 0.0002$; $\beta = -0.001 \pm 0.001$, $p = 0.11$). Similarly, FDRs reporting joint pain in
12 subsequent clinic visits had fewer physical activity hours over time compared to FDRs
13 not reporting joint pain ($p_{\text{interaction}} = 0.002$; $\beta = -0.001 \pm 0.001$, $p = 0.32$). (Figure 2)

14 Findings from the sensitivity analysis for upper extremity joint swelling resembled
15 the results from joint swelling, where in adjusted analysis, FDRs with upper extremity
16 joint swelling had more physical activity hours over time than FDRs without upper
17 extremity joint swelling ($p_{\text{interaction}} < 0.0001$; $\beta = 0.003 \pm 0.001$, $p = 0.003$). Neither upper or
18 lower extremity stiffness nor pain was associated with physical activity time in any of the
19 sensitivity analyses (data not shown).

20
21
22
23
24

1 **DISCUSSION**

2
3 In first-degree relatives of RA patients who were free of RA, we observed
4 associations between joint swelling, joint stiffness, and joint pain and physical activity
5 over time. Taking into account baseline physical activity hours, joint symptoms at
6 baseline were not associated with physical activity hours over time. As FDRs developed
7 joint symptoms over time, however, physical activity hours changed, where on average,
8 FDRs reporting joint stiffness and pain had less physical activity, and FDRs
9 experiencing joint swelling had more physical activity. These findings suggest current
10 joint symptoms do not predict future physical activity, but that over time, average
11 physical activity is influenced by joint symptoms. The inverse associations we found
12 between joint stiffness and joint pain with physical activity are consistent with previous
13 findings that RA flares and activity limitation are inversely associated with physical
14 activity in RA patients;^{2, 4, 5} and indicate that similar joint involvement in a population
15 without RA, but at higher risk for RA, may experience similar disease-specific barriers to
16 physical activity as patients with active RA.

17 Physical activity is a robust predictor of multiple health outcomes such as
18 diabetes, hypertension, and cardiovascular disease. Recent exciting and important
19 findings suggest that physical activity prior to RA development has been associated with
20 a lower risk of RA, a milder disease course, and less joint destruction.^{6, 7} In particular,
21 increased time in self-reported physical activity 5 years before RA diagnosis was
22 associated with decreased disease activity, joint pain, and inflammatory marker levels,
23 as well as better self-reported health following disease onset.⁷ Despite these benefits,
24 patients with RA have lower physical activity levels than their counterparts without RA.^{2,}

1 ³ It has been shown that RA patients average 1000 fewer steps per day during a flare
2 period compared to a non-flare period.⁴ Yet among individuals who had established
3 health-enhancing physical activity, their physical activity levels remained consistent
4 even during periods of high RA disease activity.¹⁵ Given the modest results from our
5 study, future directions for research in this population of FDRs include addressing joint
6 stiffness and pain during this pre-clinical period. By addressing these symptoms,
7 clinicians could potentially provide individuals at risk for RA the tools to establish and
8 sustain regular physical activity prior to and potentially during the onset of RA; which
9 could lead to the ability to maintain physical function and independent living during the
10 course of the disease.

11 This study has important limitations. We were limited in our estimation of physical
12 activity as particular tasks, e.g., walking versus rock climbing were not collected in this
13 questionnaire. RA usually begins in the small joints of the hands and feet, and spreads
14 later to the larger joints, as the articular cartilage and bone erode. Therefore, we chose
15 to focus on the small joints of the hands and feet, as well as the elbow, in order to
16 identify joint swelling and/or symptoms most indicative of earlier processes. In sensitivity
17 analysis, however, we investigated whether upper extremity joint symptoms versus
18 lower extremity joint symptoms were associated with physical activity hours. These
19 findings were consistent with our primary findings, and suggest that physical activity
20 hours did not differ based on whether joint symptoms were predominantly in the upper
21 or lower extremities. The physical activity questionnaire captured activity on a 'typical
22 day' and did not fully account for fluctuations of physical activity that could have been
23 influenced temporarily by inflammatory joint signs and symptoms, illness, or other
24 factors such as season of the year. Thus, our findings captured an overall picture of

1 physical activity that likely underestimated associations between joint symptoms and
2 physical activity time. Finally, because we investigated only FDRs of RA patients, we
3 are not able to generalize these results to either patients living with RA, or to the
4 general population.

5 This study is the first to our knowledge to investigate whether joint swelling or
6 related symptoms are associated with physical activity in a population of FDRs of RA
7 patients who do not have RA themselves, but have higher risk of RA. The associations
8 between joint stiffness and pain and physical activity were consistent with our
9 hypothesis and prior literature, whereas the association between joint swelling and
10 physical activity was in a direction opposite to what we hypothesized. Future studies are
11 needed to determine if symptoms of inflammatory arthritis are primary barriers to
12 physical activity and whether intervening on the symptoms will allow continued pursuit
13 of physical activity during this pre-clinical RA period.

14 In conclusion, among first-degree relatives of patients with RA, joint swelling,
15 joint stiffness, and joint pain at baseline were not associated with future physical activity
16 time. As joint swelling or symptoms changed over time, however, so did time in physical
17 activity. Given these results, implications include adapting exercise and daily physical
18 activity for individuals with joint pain or stiffness in order to intervene before the clinical
19 manifestation of RA and potentially extend the period where they are RA-free.

20
21
22
23
24

1 **ACKNOWLEDGMENTS**

2 The authors thank the SERA participants, investigators and staff for their
3 valuable contributions to this research.

4 Funding for this research was made possible by grants from the Foundation for
5 Physical Therapy Miami-Marquette Challenge Research Grant, the National Institute of
6 Arthritis and Musculoskeletal and Skin Diseases (R01 AR051394-05), National Heart,
7 Lung, and Blood Institute (K01HL122394), and National Institute for Diabetes and
8 Digestive and Kidney Diseases (K24DK110427) at the National Institutes of Health, the
9 ACR Rheumatology Research Foundation Within Our Reach: Finding a Cure for
10 Rheumatoid Arthritis campaign and the Career Development Bridge Funding Award: K
11 Bridge, and the Autoimmunity Prevention Center (U19 AI050864-10) at the National
12 Institutes of Health.
13

1 REFERENCES

- 2 1. Metsios GS, Stavropoulos-Kalinoglou A and Kitas GD. The role of exercise in the
3 management of rheumatoid arthritis. *Expert Rev Clin Immunol*. 2015;11:1121-30.
- 4 2. Sharif K, Watad A, Bragazzi NL, Lichtbroun M, Amital H and Shoenfeld Y.
5 Physical activity and autoimmune diseases: Get moving and manage the disease.
6 *Autoimmun Rev*. 2018;17:53-72.
- 7 3. Sokka T, Hakkinen A, Kautiainen H, Maillefert JF, Toloza S, Mork Hansen T,
8 Calvo-Alen J, Oding R, Liveborn M, Huisman M, Alten R, Pohl C, Cutolo M, Immonen K,
9 Woolf A, Murphy E, Sheehy C, Quirke E, Celik S, Yazici Y, Tlustochowicz W, Kapolka
10 D, Skakic V, Rojkovich B, Muller R, Stropuviene S, Andersone D, Drosos AA, Lazovskis
11 J, Pincus T and Group Q-R. Physical inactivity in patients with rheumatoid arthritis: data
12 from twenty-one countries in a cross-sectional, international study. *Arthritis Rheum*.
13 2008;59:42-50.
- 14 4. Jacquemin C, Molto A, Servy H, Sellam J, Foltz V, Gandjbakhch F, Hudry C,
15 Mitrovic S, Granger B, Fautrel B and Gossec L. Flares assessed weekly in patients with
16 rheumatoid arthritis or axial spondyloarthritis and relationship with physical activity
17 measured using a connected activity tracker: a 3-month study. *RMD Open*.
18 2017;3:e000434.
- 19 5. Veldhuijzen van Zanten JJ, Rouse PC, Hale ED, Ntoumanis N, Metsios GS,
20 Duda JL and Kitas GD. Perceived Barriers, Facilitators and Benefits for Regular
21 Physical Activity and Exercise in Patients with Rheumatoid Arthritis: A Review of the
22 Literature. *Sports Med*. 2015;45:1401-12.

- 1 6. Di Giuseppe D, Bottai M, Askling J and Wolk A. Physical activity and risk of
2 rheumatoid arthritis in women: a population-based prospective study. *Arthritis Res Ther.*
3 2015;17:40.
- 4 7. Sandberg ME, Wedren S, Klareskog L, Lundberg IE, Opava CH, Alfredsson L
5 and Saevarsdottir S. Patients with regular physical activity before onset of rheumatoid
6 arthritis present with milder disease. *Annals of the rheumatic diseases.* 2014;73:1541-4.
- 7 8. Hughes-Austin JM, Deane KD, Derber LA, Kolfenbach JR, Zerbe GO, Sokolove
8 J, Lahey LJ, Weisman MH, Buckner JH, Mikuls TR, O'Dell JR, Keating RM, Gregersen
9 PK, Robinson WH, Holers VM and Norris JM. Multiple cytokines and chemokines are
10 associated with rheumatoid arthritis-related autoimmunity in first-degree relatives
11 without rheumatoid arthritis: Studies of the Aetiology of Rheumatoid Arthritis (SERA).
12 *Ann Rheum Dis.* 2013;72:901-7.
- 13 9. Kolfenbach JR, Deane KD, Derber LA, O'Donnell C, Weisman MH, Buckner JH,
14 Gersuk VH, Wei S, Mikuls TR, O'Dell J, Gregersen PK, Keating RM, Norris JM and
15 Holers VM. A prospective approach to investigating the natural history of preclinical
16 rheumatoid arthritis (RA) using first-degree relatives of probands with RA. *Arthritis*
17 *Rheum.* 2009;61:1735-42.
- 18 10. Young KA, Deane KD, Derber LA, Hughes-Austin JM, Wagner CA, Sokolove J,
19 Weisman MH, Buckner JH, Mikuls TR, O'Dell JR, Keating RM, Gregersen PK, Robinson
20 WH, Holers VM and Norris JM. Relatives without rheumatoid arthritis show reactivity to
21 anti-citrullinated protein/peptide antibodies that are associated with arthritis-related
22 traits: studies of the etiology of rheumatoid arthritis. *Arthritis Rheum.* 2013;65:1995-
23 2004.

- 1 11. Arnett FC, Edworthy SM, Bloch DA, McShane DJ, Fries JF, Cooper NS, Healey
2 LA, Kaplan SR, Liang MH, Luthra HS and et al. The American Rheumatism Association
3 1987 revised criteria for the classification of rheumatoid arthritis. *Arthritis Rheum.*
4 1988;31:315-24.
- 5 12. Sparks JA, Chang SC, Deane KD, Gan RW, Kristen Demoruelle M, Feser ML,
6 Moss L, Buckner JH, Keating RM, Costenbader KH, Gregersen PK, Weisman MH,
7 Mikuls TR, O'Dell JR, Michael Holers V, Norris JM and Karlson EW. Associations of
8 Smoking and Age With Inflammatory Joint Signs Among Unaffected First-Degree
9 Relatives of Rheumatoid Arthritis Patients: Results From Studies of the Etiology of
10 Rheumatoid Arthritis. *Arthritis Rheumatol.* 2016;68:1828-38.
- 11 13. Aletaha D, Neogi T, Silman AJ, Funovits J, Felson DT, Bingham CO, 3rd,
12 Birnbaum NS, Burmester GR, Bykerk VP, Cohen MD, Combe B, Costenbader KH,
13 Dougados M, Emery P, Ferraccioli G, Hazes JM, Hobbs K, Huizinga TW, Kavanaugh A,
14 Kay J, Kvien TK, Laing T, Mease P, Menard HA, Moreland LW, Naden RL, Pincus T,
15 Smolen JS, Stanislawski-Biernat E, Symmons D, Tak PP, Upchurch KS, Vencovsky J,
16 Wolfe F and Hawker G. 2010 Rheumatoid arthritis classification criteria: an American
17 College of Rheumatology/European League Against Rheumatism collaborative
18 initiative. *Arthritis Rheum.* 2010;62:2569-81.
- 19 14. Shortreed SM, Peeters A and Forbes AB. Estimating the effect of long-term
20 physical activity on cardiovascular disease and mortality: evidence from the
21 Framingham Heart Study. *Heart.* 2013;99:649-54.
- 22 15. Demmelmaier I, Dufour AB, Nordgren B and Opava CH. Trajectories of Physical
23 Activity Over Two Years in Persons With Rheumatoid Arthritis. *Arthritis Care Res*
24 *(Hoboken).* 2016;68:1069-77.

1 **TABLES**

2 **Supplemental Table. Physical activity questionnaire with an example of reported**
3 **values and resulting weighted physical activity score**

4

5

6 **Table 1. Descriptive statistics by joint swelling at the baseline exam in 268 FDRs**
7 **of patients with RA**

8

9

10 Values in this table are presented as means (and standard deviation) or as medians

11 (and 25th and 75th percentile); and as proportions of FDRs with the specified

12 characteristic. *Indicates use of Fisher's exact test for p-values; and **indicates use of

13 Wilcoxon Rank Sum test for p-values.

14 RF = rheumatoid factor; CCP = cyclic citrullinated peptide, RF IgM = rheumatoid factor

15 immunoglobulin M, RF IgG = rheumatoid factor immunoglobulin G, RF IgA = rheumatoid

16 factor immunoglobulin A

FIGURE LEGENDS

Figure 1. Associations between baseline joint swelling, stiffness, and pain, and physical activity over time in 268 FDRs of patients with RA.

Figure 1 shows weighted physical activity hours over time in days for FDRs with joint swelling (1a), joint stiffness (1b), and joint pain (1c) at baseline, indicated by blue dots and blue solid lines, compared to FDRs without joint symptoms at baseline, indicated by black dots and black dashed lines.

Analyses were fully adjusted for baseline physical activity hours, age, sex, race, pack-years of smoking, body mass index, and being positive for RA-related autoantibodies.

Figure 2. Associations between changes in joint swelling, stiffness, and pain, and physical activity over time in 268 FDRs of patients with RA

Figure 2 shows weighted physical activity hours over time in days for FDRs with joint swelling (2a), joint stiffness (2b), and joint pain (2c) during subsequent clinic visits, indicated by blue dots and blue solid lines, compared to FDRs without joint symptoms at subsequent clinic visits, indicated by black dots and black dashed lines.

Analyses were fully adjusted for baseline physical activity hours, age, sex, race, pack-years of smoking, body mass index, and being positive for RA-related autoantibodies.

Supplemental Table. Physical activity questionnaire with an example of reported values and resulting weighted physical activity score

Number of physical activity hours per day	Number of hours	Weight Factor	Example Weighted Hours
Sleep – Number of hours that you typically sleep?	8	1.0	8
Sedentary – Number of hours typically sitting?	9	1.1	9.9
Slight Activity – Number of hours with activities such as standing, walking?	4	1.5	6
Moderate Activity – Number of hours with activities such as housework	2	2.4	4.8
Heavy Activity – Number of hours with activities such as heavy household work, heavy yard work such as stacking or chopping wood, exercise such as intensive sports?	1	5.0	5
Total Number of hours (should be the total of above items)	24	Total Weighted Hours = 33.7	
Physical Activity Score = $1.0 \cdot h_{\text{sleep}} + 1.1 \cdot h_{\text{sedentary}} + 1.5 \cdot h_{\text{slight}} + 2.4 \cdot h_{\text{moderate}} + 5.0 \cdot h_{\text{heavy}}$			

Table 1. Descriptive statistics by joint swelling at the baseline exam in 268 FDRs of patients with RA

	Joint Swelling (n=20)	No Joint Swelling (n=248)	p-value
Age, years (SD)	58 (17)	49 (15)	0.01
Female, %	60	71	0.28
Race, % Non-Hispanic White	90	81	0.54*
BMI, kg/m², mean (SD)	27 (6)	28 (10)	0.53
RF, % positive	10	14	1.00*
CCP2, % positive	5	3	0.47*
CCP3.1, % positive	17	9	0.33*
RF IgM, % positive	0	13	0.08*
RF IgG, % positive	10	28	0.11*
RF IgA, % positive	10	3	0.17*
Number of autoantibodies, mean (SD)	1 (1)	1 (1)	0.32
CRP (median, 25th, 75th percentile)	2 (1, 3)	1 (1, 4)	0.91**
Pack-Years Smoking (median, 25th, 75th percentile)	0 (0, 8)	0 (0, 4)	0.26**
Current Smoker, %	20	53	0.34*
Physical Activity, hours, mean (SD)			
Sleep	7 (1)	7 (1)	0.21
Sedentary	7 (3)	7 (3)	0.45
Light	5 (2)	5 (3)	0.25
Moderate	4 (3)	3 (2)	0.17
Heavy	1 (1)	1 (2)	0.17
Weighted Physical Activity Hours, mean (SD)	36 (5)	37 (7)	0.71

Values in this table are presented as means (and standard deviation) or as medians (and 25th and 75th percentile); and as proportions of FDRs with the specified characteristic. *Indicates use of Fisher's exact test for p-values; and **indicates use of Wilcoxon Rank Sum test for p-values.

RF = rheumatoid factor; CCP = cyclic citrullinated peptide, RF IgM = rheumatoid factor immunoglobulin M, RF IgG = rheumatoid factor immunoglobulin G, RF IgA = rheumatoid factor immunoglobulin

Figure 1. Associations between baseline joint swelling, stiffness, and pain, and physical activity over time in 268 FDRs of patients with RA

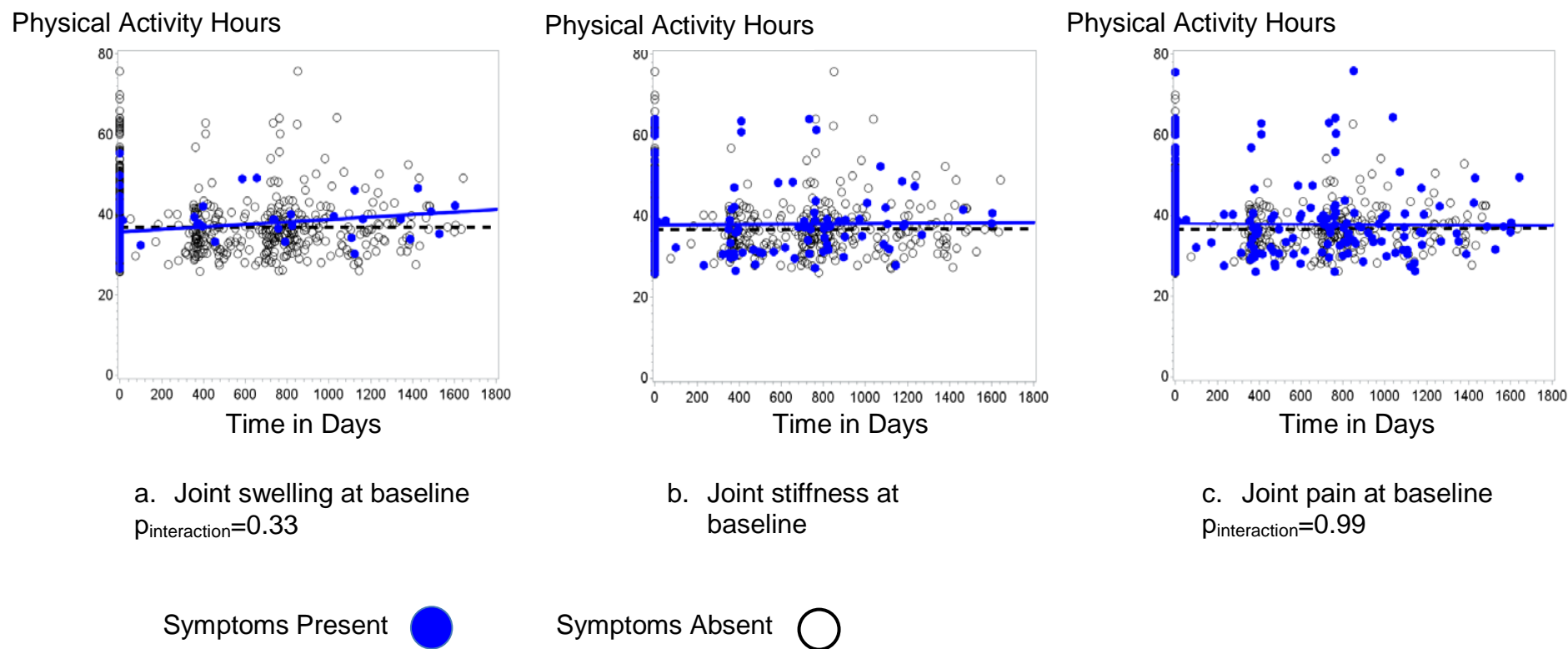
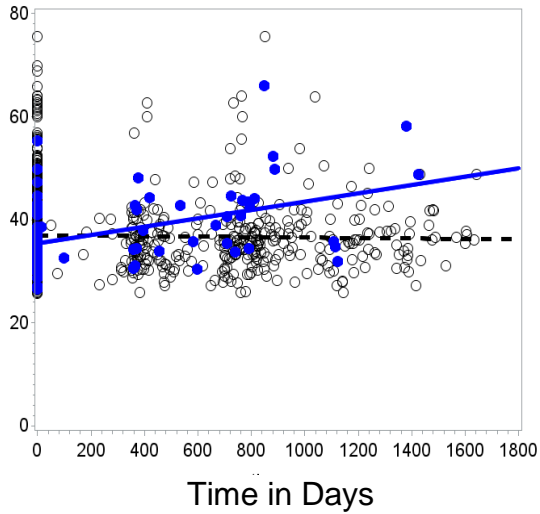


Figure 2. Associations between changes in joint swelling, stiffness, and pain, and physical activity over time in 268

FDRs of patients with RA

Physical Activity Hours



a. Joint swelling occurrences over time

$p_{\text{interaction}} < 0.0001$

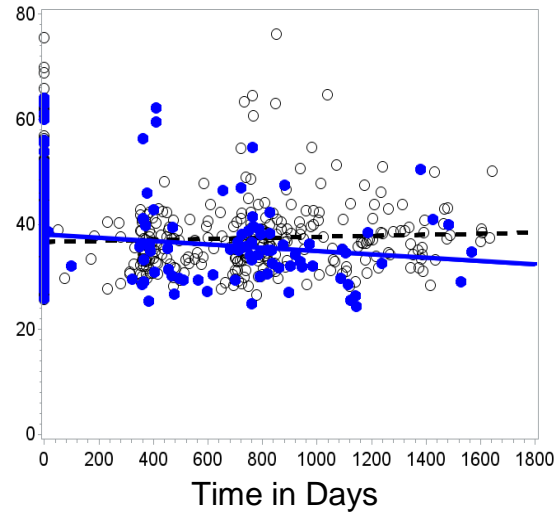
Symptoms Present



Symptoms Absent



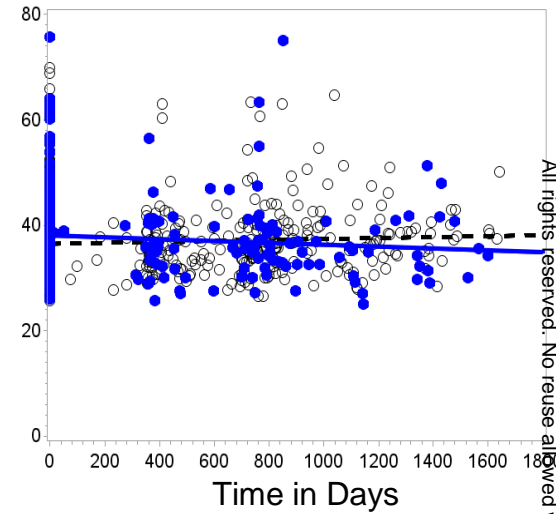
Physical Activity Hours



b. Joint stiffness experiences over time

$p_{\text{interaction}} = 0.0002$

Physical Activity Hours



c. Joint pain experiences over time

$p_{\text{interaction}} = 0.002$