

1 Risk and severity of COVID-19 and ABO blood group in transcatheter
2 aortic valve patients

3
4
5
6

7 Marion Kibler MD¹, Adrien Carmona, MD¹, Benjamin Marchandot MD¹, Kensuke
8 Matsushita MD^{1,2}, Antonin Trimaille MD¹, Mohamad Kanso MD¹, Laurent Dietrich MD¹,
9 Cécile How-Choong MD¹, Albane Odier MD¹, Gabrielle Genesseeux MD¹, Ophélie
10 Schramm MD¹, Antje Reydel MD¹, Michel Kindo, MD, PhD⁴, Minh Hoang, MD⁴, Sébastien
11 Hess MD¹, Chisato Sato MD, PhD¹, Sophie Caillard, MD, PhD³, Laurence Jesel MD, PhD^{1,2},
12 Olivier Morel MD, PhD^{1,2} and Patrick Ohlmann MD, PhD¹

13
14

15 ¹ Division of Cardiovascular Medicine, Strasbourg University Hospital, Strasbourg, France.
16 ² INSERM (French National Institute of Health and Medical Research), UMR 1260, Regenerative
17 Nanomedicine, FMTS, Strasbourg, France.
18 ³ Division of Nephrology and Transplantation, Strasbourg University Hospital, Strasbourg, France
19 ⁴ Division of Cardiac Surgery, Strasbourg University Hospital, Strasbourg, France

20

21 Short title: COVID-19, TAVR, and ABO blood group

22
23

24 **Correspondence:**

25 Patrick Ohlmann, MD, PhD
26 Pôle d'Activité Médico-Chirurgicale Cardiovasculaire, Nouvel Hôpital Civil, BP 426 - 67091
27 Strasbourg, France
28 Fax: +33 369551736 ; phone: +33 369550953
29 E-mail: patrick.ohlmann@chru-strasbourg.fr

30

31 Manuscript word count: 2474

32

33 ABSTRACT

34

35 **Background:** Although cardiovascular disease has been associated with an increased risk of
36 coronavirus disease 2019 (COVID-19), no studies have reported its clinical course in patients
37 with aortic stenosis who had undergone transcatheter aortic valve replacement (TAVR).
38 Several observational studies have found an association between the A blood group and an
39 increased susceptibility to SARS-CoV-2 infection, whereas the O blood group appears to be
40 protective.

41 **Objective:** To investigate the frequency and clinical course of COVID-19 in a large sample
42 of patients who had undergone TAVR and to determine the associations of the ABO blood
43 group with disease occurrence and outcomes.

44 **Methods:** Patients who had undergone TAVR between 2010 and 2019 were included in this
45 study and followed-up through the recent COVID-19 outbreak. The main outcomes were the
46 occurrence and severity (hospitalization and/or death) of COVID-19 and their association
47 with the ABO blood group.

48 **Results:** Of the 1125 patients who had undergone TAVR, 403 (36%) died before January 1,
49 2020, and 20 (1.8%) were lost to follow-up. The study sample therefore consisted of 702
50 patients. Among them, we identified 22 cases (3.1%) with COVID-19. Fourteen patients
51 (63.6%) were hospitalized or died of disease. Multivariate analysis identified the A blood
52 group (*versus* others) as the only independent predictor of COVID-19 in patients who had
53 undergone TAVR (odds ratio [OR] = 6.32; 95% confidence interval [CI] = 2.11–18.92;
54 $p=0.001$). The A blood group (*versus* others; OR = 8.27; 95% CI = 1.83–37.43, $p=0.006$) and
55 a history of cancer (OR = 4.99; 95% CI = 1.64–15.27, $p = 0.005$) were significantly and
56 independently associated with disease severity (hospitalization and/or death).

57 **Conclusions:** Patients who had undergone TAVR are vulnerable to COVID-19. The subgroup
58 with the A blood group was especially prone to develop the disease and showed unfavorable
59 outcomes.

60

61 **Condensed abstract**

62 Among 702 patients who had undergone TAVR between 2010 and 2019 and who were alive
63 on January 1, 2020, 22 patients developed COVID-19. Fourteen patients (63.6%) were
64 hospitalized or died of disease. The A blood group (*versus* others) was the only independent
65 predictor of COVID-19. The A blood group and a history of cancer were significantly and
66 independently associated with disease severity (hospitalization and/or death). Altogether
67 these findings suggest that patients who had undergone TAVR are vulnerable to COVID-19.
68 The subgroup with the A blood group was especially prone to develop the disease and showed
69 unfavorable outcomes.

70

71

72 **Key words**

73 ABO blood group, Coronavirus Disease 2019, Transcatheter Aortic Valve Replacement

74

75

76 **Abbreviations**

77 ACE-2: Angiotensin converting enzyme 2

78 COVID-19: coronavirus disease 2019

79 CT: Computed tomography

80 CV: Cardiovascular

81 Rh: Rhesus

82 RT-PCR: Reverse transcriptase Polymerase Chain reaction

83 SARS-CoV-2: Severe Acute Respiratory Coronavirus-2

84 TAVR: Transcatheter aortic valve replacement

85 WHO: World Health Organization

86

87

88

89 **INTRODUCTION**

90

91 At the end of 2019, a new zoonotic coronavirus (SARS-CoV-2) responsible of coronavirus
92 disease 2019 (COVID-19), arose from Wuhan, Hubei Province, China. The World Health
93 Organization (WHO) on March 11, 2020, has declared COVID-19 outbreak a global
94 pandemic. In fact, SARS-CoV-2 spread rapidly in 166 other countries around the world,
95 resulting in a global burden of 4 170 424 laboratory-confirmed cases and a death toll of
96 287 399 as of May 14, 2020.⁽¹⁾ The Alsace region in eastern France has been significantly
97 impacted, resulting in fast reshaping of in-hospital facilities. Several cardiology divisions
98 have been converted into dedicated COVID-19 units – with cardiac care units being
99 repurposed as intensive care units (ICUs)^(2,3).

100 A history of cardiovascular (CV) disease is currently recognized as a risk factor for the
101 occurrence and severity of COVID-19, especially in the elderly^(4,5). Accordingly, previous
102 studies have indicated that up to 40% of patients who require ICU admission for COVID-19
103 had preexisting congestive heart failure; further, the mortality rate from COVID-19 for
104 patients with preexisting CV disease may be as high as 36%⁽⁶⁾. While there is ample literature
105 to suggest a direct role for a history of heart disease in the susceptibility and severity of
106 COVID-19, its clinical course in patients with valvular disease remains poorly investigated.
107 With a growing number of patients with aortic stenosis being treated with transcatheter aortic
108 valve replacement (TAVR), there is a strong need to investigate this interaction further.
109 Much of the recent focus in COVID-19 research has revolved around biological markers of
110 disease susceptibility and/or severity. The ABO blood group has been shown to affect
111 individual vulnerability to SARS-CoV⁽⁷⁾, hepatitis B virus⁽⁸⁾, Norwalk virus⁽⁹⁾, and
112 *Helicobacter pylori* infection⁽¹⁰⁾. Notably, observational studies have found an association

113 between the A blood group and an increased susceptibility to SARS-CoV-2 infection while
114 the O blood group appears to be protective^(11–13).

115 The present study was undertaken to evaluate the clinical course of COVID-19 in patients
116 with aortic stenosis who had undergone TAVR. We also examined whether the ABO blood
117 group is associated with susceptibility to and severity of COVID-19 in this clinical
118 population, and whether this association is independent of potential confounders.

119

120 METHODS

121

122 **Study setting and patient enrollment**

123 This study consists of a retrospective, observational investigation aimed at examining the
124 occurrence and severity of COVID-19 in a large population of patients who undergone TAVR
125 for severe aortic stenosis between 2010 and 2019. The study was conducted in the Strasbourg
126 University Hospital (Strasbourg, Alsace, eastern France). The general characteristics of the
127 study patients – including demographics, medical history, echocardiography findings, and
128 ABO blood group – were determined from their medical records and entered into an
129 electronic file along with follow-up data. During the COVID-19 outbreak, all patients were
130 contacted by phone to ascertain their health status, cardiovascular and COVID-19 symptoms,
131 medication use, and outcomes. Patient-reported data collected through a standardized
132 questionnaire were thoroughly cross-checked with official clinical records. The study was
133 reviewed and approved by the Institutional Review Board at the Strasbourg University
134 Hospital (CE-2020-69). Owing to the retrospective nature of the study, the need for informed
135 consent was waived.

136

137 **Definitions**

138 In accordance with WHO technical guidance ⁽¹⁴⁾, patients were considered as confirmed cases
139 of COVID-19 in presence of positive reverse transcriptase-polymerase chain reaction (RT-
140 PCR) testing of a nasopharyngeal swab specimen. Because RT-PCR can yield false-negative
141 results, patients with typical symptoms and characteristic imaging findings on chest computed
142 tomography (CT) were classified as confirmed cases ⁽¹⁵⁾. Patients who were hospitalized for
143 or died of COVID-19 were considered to have severe disease.

144

145 **Statistical analysis**

146 Descriptive statistics are expressed as means \pm standard deviations for continuous data or as
147 counts (percentages) for categorical variables. Survival curves according to the ABO blood
148 group were plotted by the Kaplan-Meier method (log-rank test) with right censoring at the
149 time of last follow-up (May 8, 2020). The time-to-event was calculated as the time elapsed
150 from January 1, 2020, to the date of the index event (disease onset, hospitalization, or death).
151 Logistic regression models were constructed to evaluate the unadjusted and covariate-adjusted
152 odds ratios (ORs) and 95% confidence intervals (CIs) for the occurrence of COVID-19,
153 COVID-19-related death, and severe COVID-19. Variables adjusted for in the multivariate
154 models were those showing univariate associations at a p value <0.20 . Statistical analyses
155 were performed using SPSS, version 17.0 (IBM, Armonk, NY, USA). All tests were two-
156 sided, and statistical significance was set as a p value of <0.05 .

157

158 **RESULTS**

159

160 **General characteristics**

161 Between 2010 and 2019, a total of 1125 patients with aortic stenosis underwent TAVR in our
162 hospital. We excluded 423 patients from the analysis due to death before January 1, 2020 (n =

163 403) or loss to follow-up (n = 20). Figure 1 depicts the flow of participants through the study.
164 The general patient characteristics (n = 720; mean age: 82 ± 6.9 years; 44% men) are
165 provided in Table 1. Common coexisting CV comorbidities included coronary artery disease
166 (45.3%), atrial fibrillation (40.3%), congestive heart failure (35.9%), and peripheral arterial
167 disease (27.2%). A positive history of cancer was present in 26.9% of cases, whereas chronic
168 obstructive pulmonary disease and chronic kidney disease were identified in 11.7% and
169 16.5% of the study patients, respectively. At the time of interview, CV medications included
170 angiotensin converting enzyme (ACE) inhibitors/angiotensin II receptor blockers (48.9%),
171 statins (50.2%), anticoagulants (45.4%), and aspirin (53.3%).

172

173 **Occurrence and presentation of COVID-19**

174 Eighty-two patients (11.4%) had suspected COVID-19. Of them, 61 underwent RT-PCR
175 testing and 21 chest CT. Diagnosis was confirmed in 22 cases (3.1%; 21 by RT-PCR and one
176 on chest CT). Of them, 14 (63.6%) were hospitalized or died of COVID-19. Common clinical
177 symptoms at presentation included dyspnea (77.3%), fever (77.3%), and cough (72.7%).
178 Myalgia, gastrointestinal manifestations, and anosmia/ageusia occurred in 40.9%, 27.3%, and
179 18.2% of participants, respectively.

180

181 **COVID-19, hospitalizations, and mortality**

182 As of January 1, 2020, the all-cause and cardiovascular mortality rates in the study patients
183 were 6.8% and 2.8%, respectively. Compared with patients without COVID-19, those with
184 the disease had significantly higher all-cause mortality (5.6% *versus* 45.5%, respectively; p
185 <0.001) and hospitalization (1.8% *versus* 59.1%, respectively; p <0.0001) rates (Table 2).

186

187 **COVID-19 and ABO blood group**

188 Patients with COVID-19 more frequently had the A blood group than those without (81.8%
189 *versus* 41.3%, respectively). Conversely, the O (18.2% *versus* 46.5%, respectively), B (0%
190 *versus* 9.3%, respectively), and AB (0% *versus* 2.9%, respectively) groups were
191 underrepresented in patients with COVID-19. Subgroup analyses were subsequently
192 performed according to the Rhesus (Rh) group. Interestingly, the A Rh+ blood type (68.2%
193 *versus* 29%, respectively) – but not the A Rh- type (13.6 *versus* 12.4%, respectively) – was
194 overrepresented in patients with COVID-19. The O Rh+ (9.1% *versus* 22.4%, respectively), O
195 Rh- (4.5% *versus* 10.7%, respectively), B Rh+ (0% *versus* 7.2%, respectively), B Rh- (0%
196 *versus* 2.1%, respectively), AB Rh+ (0% *versus* 2.5%, respectively), and AB Rh- (0% *versus*
197 1.1%, respectively) types were all underrepresented in patients with COVID-19 (Table 1).
198 Additional analyses were also performed according to blood group A. Patients with the A
199 blood group were more likely to develop COVID-19 compared to those with other blood
200 types (6 *versus* 1%, respectively; $p < 0.0001$). In addition, with respect to others blood
201 groups, patients with the A blood group presented more frequently COVID-19-related death
202 (3.4 *versus* 0%, respectively; $p < 0.0001$) as well as the combined endpoint of COVID-19-
203 related death or hospitalization (4 *versus* 0.5%, respectively; $p < 0.001$; Supplemental Table
204 1).

205

206 **Predictors of COVID-19**

207 A history of cancer and the blood type A were significant predictors of COVID-19 in
208 univariate analysis. Multivariate analysis identified the A blood group (*versus* others) as the
209 only independent predictor of COVID-19 in patients who had undergone TAVR (OR = 6.32;
210 95% CI = 2.11–18.92; $p=0.001$; Table 3). Kaplan-Meier plots of COVID-19-free survival
211 according to the blood group (A *versus* others) are shown in Figure 2, panel A.

212

213 **Predictors of severe COVID-19**

214 Multivariate analysis (Table 4) revealed that the blood group A (*versus* others; OR = 8.27;
215 95% CI = 1.83–37.43, p=0.006) and a history of cancer (OR = 4.99; 95% CI = 1.64–15.27, p
216 = 0.005) were significantly and independently associated with COVID-19 severity
217 (hospitalization and/or death). Kaplan-Meier plots of COVID-19-related mortality and severe-
218 COVID-19-free survival are shown in Figure 2 (panels B and C, respectively).

219

220 **DISCUSSION**

221 To our knowledge, this study is the first to specifically investigate the impact of COVID-19 in
222 patients who have undergone TAVR. There are two principal findings from our research.
223 First, patients who had undergone TAVR were at high risk to contract COVID-19. Second,
224 the A blood group was identified as a significant risk factor for both the occurrence and
225 severity of COVID-19.

226

227 **Prevalence of COVID-19**

228 The prevalence of COVID-19 in our patients who had undergone TAVR was 3.13%, which is
229 higher than that observed in the general French population (24/10 000 on May 14, 2020) ⁽¹⁶⁾.
230 Whether the increased COVID-19 rate was due to local characteristics of the outbreak in
231 Alsace or to a higher susceptibility conferred by prior CV disease ⁽¹⁷⁾ needs further
232 epidemiological study. Moreover, the mortality rate from COVID-19 was 45% in the current
233 investigation. Age, frailty, and a significant burden of comorbidities are possible explanations
234 for the high death toll ⁽¹⁸⁾. Moreover, 63.6% of our patients had severe disease (hospitalization
235 and/or death). Despite these findings, the mechanisms by which CV disease confers
236 susceptibility to COVID-19 remain unclear. Evidence is emerging on the association between
237 aggressive disease and loss of ACE-2 function as a result of its proteolytic cleavage ⁽¹⁹⁾.

238 Under physiological conditions, ACE-2 counteracts the detrimental effects of angiotensin II
239 ⁽²⁰⁾, which might be overexpressed in patients with CV disease ⁽²¹⁾. At sites of endothelial
240 injury, an imbalance between ACE-2 and ACE-1 activity may result in angiotensin II
241 accumulation – which further exacerbates tissue injury and promotes both inflammation and
242 thrombosis ⁽²²⁾. Although our study does not address the role of ACE-2 in the susceptibility to
243 COVID-19 among patients who had undergone TAVR, its involvement is certainly plausible.

244

245 **ABO blood group and COVID-19**

246 In the current study, patients who had undergone TAVR and had the A blood group were
247 more prone to develop COVID-19 and were more likely to experience unfavorable outcomes.
248 In a research conducted in 2173 Chinese patients, Zhao et al. ⁽²³⁾ showed for the first time that
249 the A blood group was associated with an increased disease susceptibility to COVID-19 while
250 the O group seemed less vulnerable. They also found higher death rates in patients with the A
251 group. A more recent report from the Central Hospital of Wuhan confirmed the increased risk
252 conferred by the A group and the reduced disease susceptibility associated with the O group
253 ⁽¹²⁾. Another study connecting the A blood group with an increased risk of contracting
254 COVID-19 is a research on 1599 individuals who underwent SARS-CoV-2 testing in the
255 United States ⁽²⁴⁾. However, no relation with in-hospital mortality was found. The authors
256 carried these observations a step further with Rh antigen testing and found that its expression
257 could modulate the association of the ABO blood group with disease susceptibility. Similar
258 findings were noticed in our study, albeit limited to the A group. If a subject had the A group
259 and was also Rh+, the patient would have a substantially higher risk of COVID-19, whereas
260 this was not the case for Rh- individuals.

261 Growing evidence indicates that the A blood group is associated with an increased
262 susceptibility to and severity of COVID-19. The mechanisms beyond this association are

263 unknown but several hypotheses might be raised. It is possible that anti-A antibodies could
264 lead to a decreased interaction of SARS-CoV-2 with its cellular receptor ACE-2⁽²⁵⁾.
265 Interestingly, the A blood group has also been related with an increased risk of CV disease
266⁽²⁶⁾. Numerous biological pathways have been proposed to account for the association
267 between the A blood group and atherothrombosis – including an increased production of
268 soluble intercellular adhesion molecules⁽²⁷⁾ and/or Von Willebrand factor (vWF)⁽²⁸⁾. Other
269 authors have emphasized the significance of vWF cleavage in subjects with the O blood group
270⁽²⁹⁾ – an event which may reduce thrombotic risk in SARS-CoV-2-infected individuals⁽¹³⁾.

271

272 **Limitations**

273 Several caveats of our investigation need to be considered. First, our study employed a
274 retrospective design and the number of observed events (deaths and/or hospitalizations) was
275 limited. As such, the presence of residual confounding may pose limitations in our ability to
276 generalize our conclusions. Second, our research has an exploratory nature and we cannot rule
277 out the presence of chance findings resulting from multiple comparisons. Another caveat is
278 that the sex distribution of participants varied across the ABO blood groups. Specifically, men
279 were underrepresented in the A blood group, potentially posing limitations in our ability to
280 fully explore the impact of this variable on COVID-19 severity.

281

282 **Conclusion**

283 Patients who had undergone TAVR are vulnerable to COVID-19. The subgroup with the A
284 blood group was especially prone to develop the disease and showed unfavorable outcomes.
285 Our results add to the growing literature indicating that the ABO blood group may be a useful
286 laboratory parameter that should be taken into account for risk stratification during clinical
287 work-up of patients with COVID-19.

288

289 **Clinical perspectives**

290 **Competency in patient care and procedural skills:** patients who had undergone TAVR are

291 vulnerable to COVID-19. The subgroup with the A blood group was especially prone to

292 develop the disease and showed unfavorable outcomes.

293 **Translational outlook:** particular attention should be paid to patients who have undergone

294 TAVR, to prevent COVID-19 and anticipate the severity of the disease. ABO group may be

295 an additional tool for risk stratification in these patients.

296

297 Patients who have undergone TAVR are vulnerable to Covid-19

298

299

300 **Acknowledgements**

301 This work was made possible by the front-line healthcare personnel of the Department of
302 Cardiology, Strasbourg University Hospital. Their dedication during this unprecedented
303 health crisis has been invaluable.

304

305 **Disclosure of potential conflicts of interest**

306 The authors have no conflicts of interest in relation to the findings reported in this article.

307

308 *Sources of funding and support:* This study was financially supported by GERCA (Groupe
309 pour 237 l'Enseignement, la prévention et la Recherche Cardiologique en Alsace).

310

311 **References**

- 312 1. Coronavirus disease (COVID-19) Situation Report, World Health Organization.
313 [https://www.who.int/docs/default-source/coronaviruse/situation-reports/20200514-covid-19-](https://www.who.int/docs/default-source/coronaviruse/situation-reports/20200514-covid-19-sitrep-115.pdf?sfvrsn=3fce8d3c_6)
314 [sitrep-115.pdf?sfvrsn=3fce8d3c_6](https://www.who.int/docs/default-source/coronaviruse/situation-reports/20200514-covid-19-sitrep-115.pdf?sfvrsn=3fce8d3c_6)
- 315 2. TABLEAU DE BORD DES DONNÉES RÉGIONALES, Ministry of Health France.
316 Published online May 2020. [https://www.grand-est.ars.sante.fr/system/files/2020-05/2020-05-](https://www.grand-est.ars.sante.fr/system/files/2020-05/2020-05-15_Données%20du%20jour.pdf)
317 [15_Données%20du%20jour.pdf](https://www.grand-est.ars.sante.fr/system/files/2020-05/2020-05-15_Données%20du%20jour.pdf)
- 318 3. COVID-19: Point épidémiologique hebdomadaire du 14 mai 2020. Ministry of Health
319 France. Published online May 2020. [https://www.santepubliquefrance.fr/maladies-et-](https://www.santepubliquefrance.fr/maladies-et-traumatismes/maladies-et-infections-respiratoires/infection-a-coronavirus/documents/bulletin-national/covid-19-point-epidemiologique-du-14-mai-2020)
320 [traumatismes/maladies-et-infections-respiratoires/infection-a-coronavirus/documents/bulletin-](https://www.santepubliquefrance.fr/maladies-et-infections-respiratoires/infection-a-coronavirus/documents/bulletin-national/covid-19-point-epidemiologique-du-14-mai-2020)
321 [national/covid-19-point-epidemiologique-du-14-mai-2020](https://www.santepubliquefrance.fr/maladies-et-infections-respiratoires/infection-a-coronavirus/documents/bulletin-national/covid-19-point-epidemiologique-du-14-mai-2020)
- 322 4. Inciardi RM, Adamo M, Lupi L, et al. Characteristics and outcomes of patients
323 hospitalized for COVID-19 and cardiac disease in Northern Italy. *Eur Heart J.*
324 2020;41(19):1821-1829. doi:10.1093/eurheartj/ehaa388
- 325 5. Huang C, Wang Y, Li X, et al. Clinical features of patients infected with 2019 novel
326 coronavirus in Wuhan, China. *The Lancet.* 2020;395(10223):497-506. doi:10.1016/S0140-
327 6736(20)30183-5
- 328 6. Arentz M, Yim E, Klaff L, et al. Characteristics and Outcomes of 21 Critically Ill
329 Patients With COVID-19 in Washington State. *JAMA.* 2020;323(16):1612.
330 doi:10.1001/jama.2020.4326
- 331 7. Cheng Y, Cheng G, Chui CH, et al. ABO Blood Group and Susceptibility to Severe
332 Acute Respiratory Syndrome. *JAMA.* 2005;293(12):1447-1451.
333 doi:10.1001/jama.293.12.1450-c
- 334 8. Wang D-S, Chen D-L, Ren C, et al. ABO blood group, hepatitis B viral infection and

- 335 risk of pancreatic cancer. *Int J Cancer*. 2012;131(2):461-468. doi:10.1002/ijc.26376
- 336 9. Lindesmith L, Moe C, Marionneau S, et al. Human susceptibility and resistance to
337 Norwalk virus infection. *Nat Med*. 2003;9(5):548-553. doi:10.1038/nm860
- 338 10. Boren T, Falk P, Roth K, Larson G, Normark S. Attachment of *Helicobacter pylori* to
339 human gastric epithelium mediated by blood group antigens. *Science*. 1993;262(5141):1892-
340 1895. doi:10.1126/science.8018146
- 341 11. Dai X. ABO blood group predisposes to COVID-19 severity and cardiovascular
342 diseases. *Eur J Prev Cardiol*. Published online April 28, 2020:204748732092237.
343 doi:10.1177/2047487320922370
- 344 12. Li J, Wang X, Chen J, Cai Y, Deng A, Yang M. Association between ABO blood
345 groups and risk of SARS-CoV-2 pneumonia. *Br J Haematol*. Published online May 7,
346 2020:bjh.16797. doi:10.1111/bjh.16797
- 347 13. O'Sullivan JM, Ward S, Fogarty H, O'Donnell JS. More on "Association between
348 ABO blood groups and risk of SARS-CoV-2 Pneumonia." *Br J Haematol*. Published online
349 May 18, 2020:bjh.16845. doi:10.1111/bjh.16845
- 350 14. World Health Organization. World Health Organization. (2020). Global surveillance
351 for COVID-19 caused by human infection with COVID-19 virus: interim guidance. Published
352 online March 20, 2020. <https://apps.who.int/iris/handle/10665/331506>
- 353 15. Ai T, Yang Z, Hou H, et al. Correlation of Chest CT and RT-PCR Testing in
354 Coronavirus Disease 2019 (COVID-19) in China: A Report of 1014 Cases. *Radiology*.
355 Published online February 26, 2020:200642. doi:10.1148/radiol.2020200642
- 356 16. info coronavirus covid 19 - carte et donnees covid 19 en france. Gouvernement.fr.
357 Accessed May 26, 2020. <https://www.gouvernement.fr/info-coronavirus/carte-et-donnees>
- 358 17. Fang L, Karakiulakis G, Roth M. Are patients with hypertension and diabetes mellitus
359 at increased risk for COVID-19 infection? *Lancet Respir Med*. 2020;8(4):e21.

- 360 doi:10.1016/S2213-2600(20)30116-8
- 361 18. Onder G, Rezza G, Brusaferro S. Case-Fatality Rate and Characteristics of Patients
362 Dying in Relation to COVID-19 in Italy. *JAMA*. 2020;323(18):1775-1776.
363 doi:10.1001/jama.2020.4683
- 364 19. Wang K, Gheblawi M, Oudit GY. Angiotensin Converting Enzyme 2: A Double-
365 Edged Sword. *Circulation*. Published online March 26,
366 2020:CIRCULATIONAHA.120.047049. doi:10.1161/CIRCULATIONAHA.120.047049
- 367 20. Sriram K, Insel PA. *Dangers of ACE Inhibitor and ARB Usage in COVID-19:
368 Evaluating the Evidence*. Pharmacology and Therapeutics; 2020.
369 doi:10.1101/2020.03.25.20043927
- 370 21. Kuster GM, Pfister O, Burkard T, et al. SARS-CoV2: should inhibitors of the renin-
371 angiotensin system be withdrawn in patients with COVID-19? *Eur Heart J*. Published online
372 March 20, 2020. doi:10.1093/eurheartj/ehaa235
- 373 22. Sriram K, Insel PA. A hypothesis for pathobiology and treatment of COVID-19: The
374 centrality of ACE1/ACE2 imbalance. *Br J Pharmacol*. n/a(n/a). doi:10.1111/bph.15082
- 375 23. Zhao J, Yang Y, Huang H, et al. *Relationship between the ABO Blood Group and the
376 COVID-19 Susceptibility*. *Epidemiology*; 2020. doi:10.1101/2020.03.11.20031096
- 377 24. Zietz M, Tatonetti NP. *Testing the Association between Blood Type and COVID-19
378 Infection, Intubation, and Death*. *Infectious Diseases (except HIV/AIDS)*; 2020.
379 doi:10.1101/2020.04.08.20058073
- 380 25. Guillon P, Clément M, Sébille V, et al. Inhibition of the interaction between the
381 SARS-CoV Spike protein and its cellular receptor by anti-histo-blood group antibodies.
382 *Glycobiology*. 2008;18(12):1085-1093. doi:10.1093/glycob/cwn093
- 383 26. Wu O, Bayoumi N, Vickers MA, Clark P. ABO(H) blood groups and vascular disease:
384 a systematic review and meta-analysis: ABO groups and thrombosis. *J Thromb Haemost*.

385 2007;6(1):62-69. doi:10.1111/j.1538-7836.2007.02818.x

386 27. Paré G, Chasman DI, Kellogg M, et al. Novel Association of ABO Histo-Blood Group

387 Antigen with Soluble ICAM-1: Results of a Genome-Wide Association Study of 6,578

388 Women. Gibson G, ed. *PLoS Genet.* 2008;4(7):e1000118. doi:10.1371/journal.pgen.1000118

389 28. Dunne E, Qi QM, Shaqfeh ES, et al. Blood group alters platelet binding kinetics to

390 von Willebrand factor and consequently platelet function. *Blood.* 2019;133(12):1371-1377.

391 doi:10.1182/blood-2018-06-855528

392 29. Bowen DJ. An influence of ABO blood group on the rate of proteolysis of von

393 Willebrand factor by ADAMTS13. *J Thromb Haemost.* 2003;1(1):33-40. doi:10.1046/j.1538-

394 7836.2003.00007.x

395

396

397

398 **Figure legends**

399

400 Figure 1. Flow of patients through the study

401 Abbreviations: CT: Computed tomography, Covid-19: Coronavirus Disease 2019; ICU: Intensive Care

402 Unit; RT-PCR: Reverse-Transcriptase-Polymerase-Chain-Reaction; TAVR: Transcatheter Aortic Valve

403 Replacement.

404

405

406

407

408

409 Figure 2. Kaplan–Meier plots of COVID-19-free survival (panel A), COVID-19-related

410 mortality (panel B), and severe-COVID-19-free survival (panel C) according to the ABO

411 blood group (group A *versus* other groups).

412

413 Table 1. General characteristics of patients who had undergone transcatheter aortic valve
414 replacement according to the presence or absence of COVID-19

Clinical Characteristics	Entire cohort (n= 702)	COVID-19 (n= 22)	No COVID- 19 (n= 680)	p value
Age, years	82 ± 6.9	82 ± 8.4	82 ± 6.9	0.961
Male sex – n (%)	313 (44)	7 (31.8)	306 (45)	0.220
STS score – %	5.9 ± 4.9	5.5 ± 2.4	5.9 ± 5.0	0.757
Cardiovascular risk factors – n (%)				
Current smoking	26 (3.7)	1 (4.5)	25 (3.7)	0.832
Hypertension	587 (83.6)	18 (81.8)	569 (83.7)	0.817
Obesity (Body mass index > 30 kg/m ²)	183 (26.1)	6 (27.3)	177 (26.1)	0.899
Dyslipidemia	428 (61)	12 (54.5)	416 (61.2)	0.530
Diabetes	213 (30.3)	6 (27.3)	207 (30.4)	0.750
Comorbidities– n (%)				
Coronary artery disease	318 (45.3)	12 (54.5)	306 (45.0)	0.376
Congestive heart failure	252 (35.9)	6 (27.3)	246 (36.5)	0.392
Stroke	98 (14)	3 (13.6)	95 (14.0)	0.964
Atrial fibrillation	283 (40.3)	6 (27.3)	277 (40.7)	0.205
Peripheral arterial disease	191 (27.2)	5 (22.7)	186 (27.4)	0.631
COPD	82 (11.7)	3 (13.6)	79 (11.6)	0.740
Prior cancer	189 (26.9)	10 (45.5)	179 (26.3)	0.053
CKD (Creatinine levels >130 µmol/l)	115 (16.5)	4 (18.2)	111 (16.4)	0.824
LVEF after TAVR– %	56 ± 11	56 ± 12	56 ± 11	0.902
Treatment at time of follow up – n (%)				
Aspirin	365 (53.3)	13 (59.1)	352 (53.1)	0.579
P2Y12 inhibitors				
VKA	144 (21.0)	4 (18.2)	140 (21.1)	0.740
DOAC	175 (25.5)	6 (27.3)	169 (25.5)	0.850
ACE-i/ARB	335 (48.9)	12 (54.5)	323 (48.7)	0.591
Statins	344 (50.2)	9 (40.9)	335 (50.5)	0.375
Amiodarone	101 (14.7)	2 (9.1)	99 (14.9)	0.447
ABO blood type – n (%)				
A	299 (42.6)	18 (81.8)	281 (41.3)	0.002
B	63 (9)	0 (0)	63 (9.3)	
AB	20 (2.9)	0 (0)	20 (2.9)	
O	320 (45.6)	4 (18.2)	316 (46.5)	
Rhesus positive (Rh+) – n (%)	352 (58.6)	11 (68.8)	341 (58.3)	0.402
Blood type – no. (%)				
A Rh-	87 (12.4)	3 (13.6)	84 (12.4)	0.027
A Rh+	212 (30.2)	15 (68.2)	197 (29.0)	
AB Rh-	8 (1.1)	0 (0)	8 (1.2)	
AB Rh+	17 (2.4)	0 (0)	17 (2.5)	
B Rh-	14 (2.0)	0 (0)	14 (2.1)	
B Rh+	49 (7.0)	0 (0)	49 (7.2)	
O Rh-	74 (10.5)	1 (4.5)	73 (10.7)	
O Rh+	154 (21.9)	2 (9.1)	152 (22.4)	
Missing	87 (12.4)	1 (4.5)	86 (12.6)	

415 Data are given as means ± standard deviations or counts (percentages). Abbreviations: ACE-i: Angiotensin
416 Converting Enzyme inhibitor; ARB: Angiotensin Receptor blocker; CKD: Chronic Kidney Disease (creatinine >

417 130 $\mu\text{mol/l}$); COPD: Chronic Obstructive Pulmonary Disease; COVID-19: Coronavirus Disease 2019; DOAC:
418 direct oral anticoagulant; LVEF: Left Ventricular Ejection Fraction; STS score: Society of Thoracic Surgeons
419 score; TAVR: Transcatheter Aortic Valve Replacement; VKA: vitamin K antagonist.
420

421 Table 2. Clinical outcomes of patients who had undergone transcatheter aortic valve
 422 replacement according to the presence or absence of COVID-19
 423

	Entire cohort (n = 702)	COVID-19 (n = 22)	No COVID-19 (n = 680)	p value
Hospitalization – n (%)	25 (3.6)	13 (59.1)	12 (1.8)	<0.0001
Conventional unit	22 (3.2)	10 (45.5)	12 (1.8)	<0.0001
Intensive care unit	3 (0.44)	3 (13.6)	0 (0)	<0.0001
Mortality from January 1, 2020 – n (%)				
All-cause mortality	48 (6.8)	10 (45.5)	38 (5.6)	<0.0001
Cardiovascular mortality	20 (2.8)	0 (0)	20 (2.8)	0.414
COVID-19 mortality	10 (1.5)	10 (45.5)	0 (0)	<0.0001
COVID-19 severity – n (%)				
COVID-19 related hospitalization or death	14 (2.0)	14 (63.6)	0 (0)	<0.0001

424 Abbreviations: COVID-19: Coronavirus Disease 2019.
 425

426
427
428
429

Table 3. Factors associated with the occurrence of COVID-19 in patients who had undergone transcatheter aortic valve replacement

	Univariate analysis			Multivariate analysis		
	OR	95% CI	p value	OR	95% CI	p value
Age	0.99	0.94-1.06	0.610			
Male sex	0.57	0.23-1.42	0.226			
Diabetes	0.86	0.33-2.22	0.751			
Obesity	0.89	0.41-2.76	0.899			
Hypertension	0.89	0.29-2.64	0.817			
Dyslipidemia	0.76	0.32-1.79	0.531			
Current smoking	0.83	0.16-9.65	0.832			
Atrial fibrillation	0.55	0.21-1.41	0.212			
Peripheral artery disease	0.78	0.28-2.15	0.632			
CKD (Creatinine levels >130 µmol/l)	1.13	0.38-3.41	0.703			
Prior cancer	2.33	0.99-5.49	0.053	2.28	0.96-5.43	0.062
ACE-i/ARBs	1.26	0.54-2.96	0.591			
P2Y12 inhibitors	0.70	0.09-5.37	0.736			
Aspirin	1.28	0.54-3.03	0.580			
Statins	0.68	0.29-1.61	0.377			
A blood group	6.29	2.14-19.08	0.001	6.32	2.11-18.92	0.001

430
431
432
433

Abbreviations: ACEi, angiotensin converting enzyme inhibitors; ARB, angiotensin receptor blockers; CI, confidence interval; CKD, chronic kidney disease; COVID-19, coronavirus disease 2019; LVEF, left ventricular ejection fraction; OR, odds ratio; TAVR, transcatheter aortic valve replacement.

434
435
436

Table 4. Factors associated with severe COVID-19 in patients who had undergone transcatheter aortic valve replacement

	Univariate analysis			Multivariate analysis		
	OR	95% CI	p value	OR	95% CI	p value
Age	0.98	0.92-1.05	0.649			
Sex (male)	0.68	0.23-2.07	0.502			
Diabetes	1.74	0.59-5.09	0.309			
Obesity	0.77	0.21-2.78	0.688			
Hypertension	0.71	0.19-2.59	0.608			
Dyslipidemia	0.85	0.29-2.48	0.767			
Atrial fibrillation	0.57	0.18-1.69	0.371			
Peripheral artery disease	1.07	0.33-3.47	0.908			
CKD (Cr >130 μmol/l)	2.07	0.64-6.71	0.226			
Coronary artery disease	1.63	0.56-4.74	0.373			
Heart failure	0.71	0.22-2.29	0.566			
COPD	1.26	0.28-5.75	0.761			
Stroke	1.03	0.23-4.66	0.972			
Prior cancer	5.08	1.68-15.34	0.004	4.99	1.64-15.27	0.005
A blood group	8.38	1.86-37.74	0.006	8.27	1.83-37.43	0.006
O blood group	0.19	0.04-0.87	0.033			
Aspirin	0.87	0.30-2.52	0.804			
ACE-i/ARB	1.05	0.36-3.01	0.934			
Statins	0.74	0.25-2.15	0.579			

437 Abbreviations: ACEi, angiotensin converting enzyme inhibitors; ARB, angiotensin receptor blockers; CI,
438 confidence interval; CKD, chronic kidney disease; COPD, chronic obstructive pulmonary disease; COVID-19,
439 coronavirus disease 2019; DOAC, direct oral anticoagulants; LVEF, left ventricular ejection fraction; OR, odds
440 ratio; STS, Society of Thoracic Surgeons; TAVR, transcatheter aortic valve replacement; VKA, vitamin K
441 antagonists.

442
443
444
445

446

447 Supplemental Table 1. Clinical outcomes of patients who had undergone transcatheter aortic
448 valve replacement according to A blood group
449

Variable	Entire cohort (n = 702)	A blood group (n = 299)	Others blood groups (n = 403)	p value
Confirmed COVID-19	22 (3.1)	18 (6)	4 (1)	<0.0001
Mortality				
COVID-19 mortality	10 (1.5)	10 (3.4)	0 (0)	<0.0001
COVID-19 severity – n (%)				
COVID-19 related hospitalization or death	14 (2.0)	12 (4.0)	2 (0.5)	0.001

450

Abbreviations: Covid-19: Coronavirus Disease 2019.

451

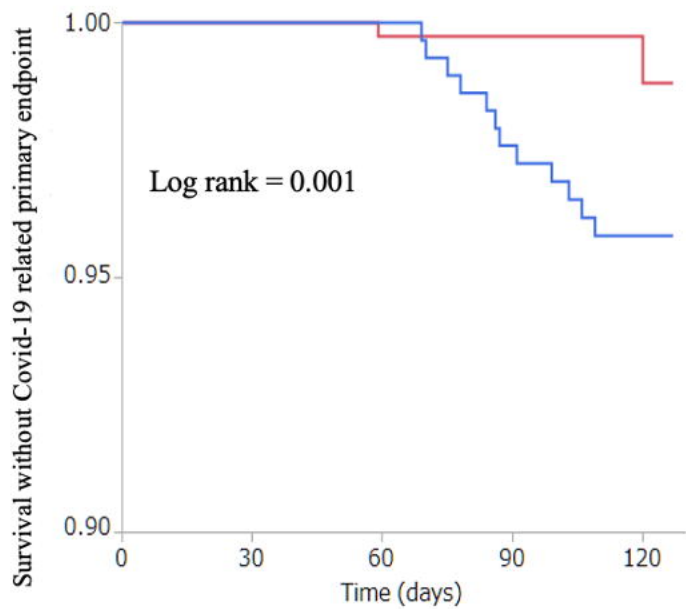
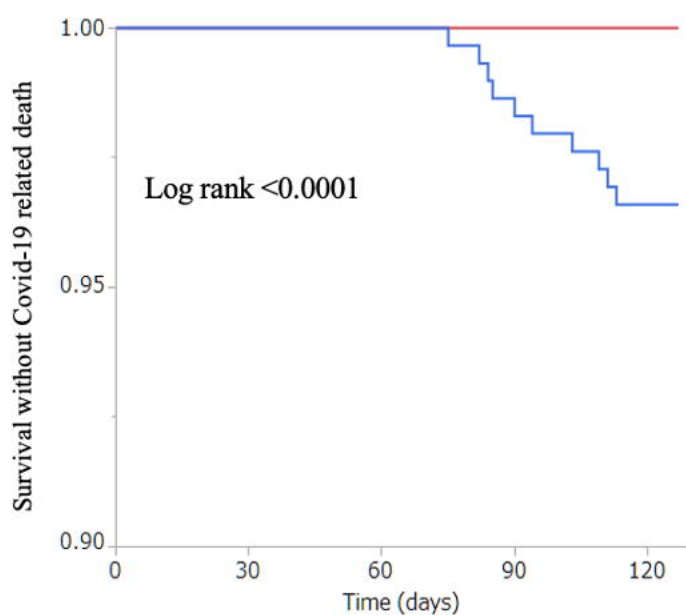
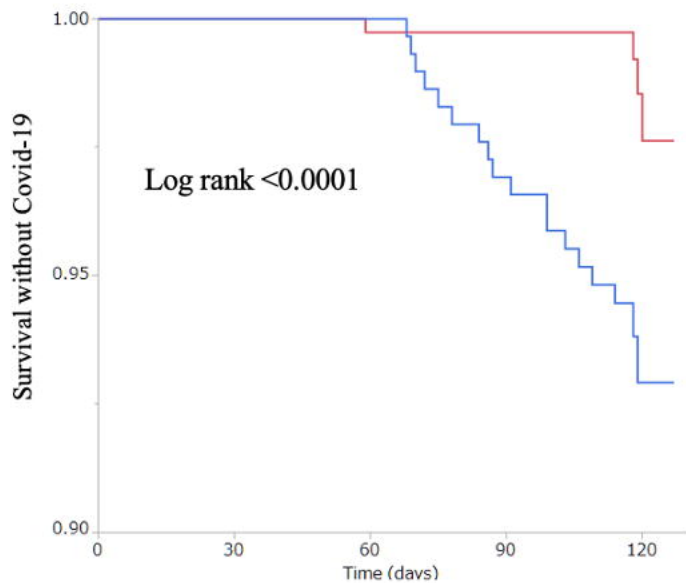
452
453
454
455

Supplemental Table 2. General characteristics of patients who had undergone transcatheter aortic valve replacement according to the presence or A blood group versus other groups.

Variable	Entire cohort (n = 702)	A blood group (n = 299)	Other blood groups (n = 403)	p value
Age, years	82.6 ± 6.9	82.4 ± 7.1	82.8 ± 6.9	0.513
Male sex – n (%)	313 (44.6)	116 (38.8)	197 (48.9)	0.008
STS score – %	5.9 ± 5.0	6.0 ± 5.1	5.8 ± 4.9	0.645
Cardiovascular risk factors – n (%)				
Current smoking	26 (3.7)	8 (2.7)	18 (4.5)	0.214
Hypertension	587 (83.6)	253 (84.6)	334 (82.9)	0.539
BMI (kg/m ²)	27.3 ± 5.8	27.3 ± 5.8	27.2 ± 5.6	0.892
Dyslipidemia	428 (61.0)	186 (62.2)	242 (56.5)	0.562
Diabetes	213 (30.3)	97 (32.4)	116 (28.8)	0.297
Comorbidities – n (%)				
Coronary artery disease	318 (45.3)	146 (48.8)	172 (42.7)	0.106
Congestive heart failure	252 (35.9)	107 (35.8)	145 (36.0)	0.958
Stroke	98 (14.0)	40 (13.4)	58 (14.4)	0.701
Atrial fibrillation	283 (40.3)	121 (40.5)	162 (40.2)	0.943
COPD	82 (11.7)	36 (12.1)	46 (11.4)	0.786
Prior cancer	187 (26.6)	82 (27.4)	105 (26.1)	0.685
CKD (Creatinine levels >130 µmol/l)	102 (14.6)	50 (16.8)	52 (12.9)	0.150
Peripheral arterial disease	191 (27.2)	84 (28.1)	107 (26.6)	0.650
Blood Type – n (%)				
A	299 (42.6)	299 (100)	0 (0)	< 0.0001
B	63 (9.0)	0 (0)	63 (15.6)	
AB	20 (2.8)	0 (0)	20 (5.0)	
O	320 (45.6)	0 (0)	320 (79.4)	
Treatment at the time of follow up – n (%)				
Aspirin	365 (53.3)	163 (54.9)	202 (52.1)	0.463
P2Y12 inhibitors	44 (6.3)	19 (6.4)	25 (6.2)	0.935
VKA	144 (21.0)	58 (19.5)	86 (22.2)	0.401
DOAC	175 (25.5)	78 (26.3)	97 (25.0)	0.707
ACE-i/ARB	335 (48.9)	152 (51.2)	183 (47.2)	0.298
Statins	344 (50.2)	156 (52.5)	188 (48.5)	0.291

456 Data are given as means ± standard deviations or counts (percentages). Abbreviations: ACEi,
457 angiotensin converting enzyme inhibitors; ARB, angiotensin receptor blockers; BMI: Body mass
458 index; CKD, chronic kidney disease; COPD, chronic obstructive pulmonary disease; COVID-19,
459 coronavirus disease 2019; DOAC, direct oral anticoagulants; LVEF, left ventricular ejection fraction;
460 STS, Society of Thoracic Surgeons; TAVR, transcatheter aortic valve replacement; VKA, vitamin K
461 antagonists.

462
463



1125 patients treated with TAVR in
Strasbourg University Hospital
between 2010 and 2019

403 deaths occurring between
TAVR and January 1, 2020

20 patients lost to follow up

702 patients included in the study

21 cases positive for SARS-CoV-2 on RT-PCR
testing; one patient with negative RT-PCR
findings but typical chest CT results

22 patients with COVID-19

13 related Covid-19 hospitalizations
(three in ICU)

4 survived

9 died in-
hospital

1 died out
of hospital

14 patients with severe COVID-19