

# 1    **Model-based spatial-temporal mapping of opisthorchiasis in endemic**

## 2    **countries of Southeast Asia**

3    Ting-Ting Zhao,<sup>1</sup> Yi-Jing Feng,<sup>1</sup> Pham Ngoc Doanh,<sup>2</sup> Somphou Sayasone,<sup>3</sup> Virak Khieu,<sup>4</sup> Choosak  
4    Nithikathkul,<sup>5</sup> Men-Bao Qian,<sup>6,7</sup> Yuan-Tao Hao<sup>1,8</sup> Ying-Si Lai,<sup>1,8\*</sup>

5    <sup>1</sup>Department of Medical Statistics, School of Public Health, Sun Yat-sen University, Guangzhou,  
6    Guangdong, People's Republic of China.

7    <sup>2</sup>Department of Parasitology, Institute of Ecology and Biological Resources, Graduate University of  
8    Science and Technology, Vietnam Academy of Sciences and Technology, Cau Giay, Hanoi, Vietnam.

9    <sup>3</sup>Lao Tropical and Public Health Institute, Ministry of Health, Vientiane Capital, Lao People's Democratic  
10    Republic.

11    <sup>4</sup>National Center for Parasitology, Entomology and Malaria Control, Ministry of Health, Phnom Penh,  
12    Cambodia.

13    <sup>5</sup>Tropical and Parasitic Diseases Research Unit, Faculty of Medicine, Mahasarakham University,  
14    Mahasarakham, Thailand.

15    <sup>6</sup>National Institute of Parasitic Diseases, Chinese Center for Disease Control and Prevention, Shanghai,  
16    People's Republic of China.

17    <sup>7</sup>WHO Collaborating Centre for Tropical Diseases, Key Laboratory of Parasite and Vector Biology,  
18    Ministry of Health, Shanghai, People's Republic of China.

19    <sup>8</sup>Sun Yat-sen Global Health Institute, Sun Yat-sen University, Guangzhou, Guangdong, People's Republic  
20    of China.

21    \*Correspondence to: Dr Ying-Si Lai, Department of Medical Statistics, School of Public Health, Sun Yat-  
22    sen University, Guangzhou, Guangdong 510080, China. laiys3@mail.sysu.edu.cn

## Abstract

Opisthorchiasis is an overlooked danger to Southeast Asia. High-resolution disease risk maps are critical for targeting control interventions to priority areas; however, they haven't been available for Southeast Asia. A Bayesian spatial-temporal joint model was developed, where both point-referenced and area-level data were assumed to follow a binomial distribution, modeling with a logit regression in combination of potential influencing factors and spatial-temporal random effects. The model-based risk mapping identified area of high prevalence (>25%) of opisthorchiasis in northeastern Thailand, central-southern parts of Laos, and some eastern areas of Cambodia from 2010 onwards. And a total of 13.13 million (95% BCI: 11.43-15.21) people were infected with *O. viverrini* in 2018 in four major endemic countries (ie, Thailand, Laos, Cambodia, and Vietnam) of Southeast Asia, with a prevalence of 6.96% (95% BCI: 6.06%-8.06%). These model-based high-resolution risk maps can provide important information to guide the spatial targeting of opisthorchiasis control interventions.

## Introduction

End the epidemics of Neglected Tropical Diseases (NTDs) by 2030 embodied in the international set of targets for the Sustainable Development Goals (SDGs) endorsed by the United Nations empowers the efforts made by developing countries to combat the NTD epidemics (*UN,2015*). To date, 20 diseases have been listed as NTDs, and opisthorchiasis is under the umbrella of food-borne trematodiasis (*Ogorodova, et al.,2015*). Two species of opisthorchiasis are of public health significance, that is *Opisthorchis felinus* (*O. felinus*), endemic in eastern Europe and Russia, and *Opisthorchis viverrini* (*O. viverrini*) endemic in Southeast Asian countries (*Petney, et al.,2013*). The later species is of our interest in the current manuscript.

According to WHO's conservative estimation, an overall disease burden due to opisthorchiasis was 188,346 disability-adjusting life years (DALYs) in 2010 (*Havelaar, et al.,2015*). Fürst and colleagues estimated that more than 99% of the burden worldwide attribute to *O. viverrini* infection in Southeast Asia (*Fürst, et al.,2012*). Five countries in Southeast Asia, Cambodia, Lao PDR, Myanmar, Thailand and Vietnam, are endemic for opisthorchiasis, with an estimated 67.3 million people at risk (*Keiser and Utzinger,2005*). It is well documented that chronic and repeated infection with *O. viverrini* leads to the

51 development of fatal bile duct cancer (cholangiocarcinoma) (*International Agency for Research on*  
52 *Cancer,1994*).

53 The life cycle of *O. viverrini* involves freshwater snails of the genus *Bithynia* as the first intermediate  
54 host, and freshwater cyprinoid fish as the second intermediate host. Humans and other carnivores (e.g.,  
55 cats and dogs), the final hosts, become infected by consuming raw or insufficiently cooked infected fish  
56 (*Andrews, et al.,2008; Saijuntha, et al.,2014*). Behavioral, environmental and socio-economic factors  
57 affect the transmission of *O. viverrini* (*Grundy-Warr, et al.,2012; Phimpraphai, et al.,2018;*  
58 *Phimpraphai, et al.,2017; Prueksapanich, et al.,2018*). Raw or insufficiently cooked fish consumption  
59 is the cultural root in endemic countries, shows a strong relationship with the occurrence of the disease  
60 (*Andrews, et al.,2008; Grundy-Warr, et al.,2012*). Poorly hygienic conditions increase the risk of  
61 infection, especially in areas practicing raw-fish-eating habit (*Grundy-Warr, et al.,2012*). In addition,  
62 environmental and climatic factors, such as temperature, precipitation and landscape, affecting either  
63 snail/fish population or growth of the parasites inside the intermediate hosts, can potentially influence  
64 the risk of human infection (*Forrer, et al.,2012; Suwannatrai, et al.,2017*). Important control strategies  
65 of *O. viverrini* infection include preventive chemotherapy, health education, environmental modification,  
66 improving sanitation, as well as comprehensive approaches with combinations of the above (*Saijuntha,*  
67 *et al.,2014*). For purposes of public health control, WHO recommends implementing preventive  
68 chemotherapy once a year or once every two years depending on the levels of prevalence in population,  
69 with complementary interventions such as health education and improvement of sanitation (*WHO,2009*).

70 Understanding the geographical distribution of *O. viverrini* infection risk at high spatial resolution is  
71 critical to prevent and control the disease cost-effectively in priority areas. Thailand conducted national  
72 surveys for *O. viverrini* prevalence in 1981, 1991, 2001, 2009, and 2014 (*Echaubard, et al.,2016;*  
73 *Suwannatrai, et al.,2018*), but the results of these surveys were presented at the province-level, which is  
74 less informative for precisely targeting control interventions. Suwannatrai and colleagues, based on  
75 climatic and *O. viverrini* presence data, produced climatic suitability maps for *O. viverrini* in Thailand  
76 using the MaxEnt modeling approach (*Suwannatrai, et al.,2017*). The maps brought insights for  
77 identifying areas with a high probability of *O. viverrini* occurrence; however, they did not provide direct  
78 information on prevalence of *O. viverrini* in population (*Elith, et al.,2011*). A risk map of *O. viverrini*  
79 infection in Champasack province of Lao PDR were presented by Forrer and colleagues (*Forrer, et*

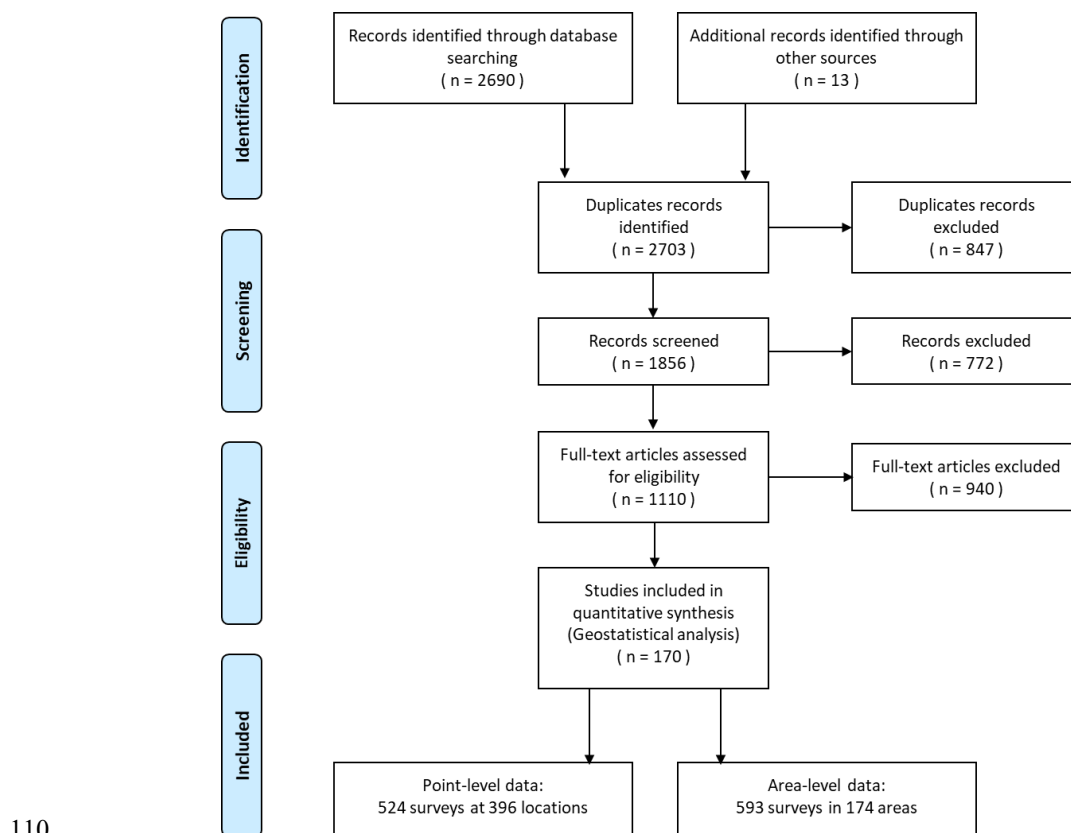
*al.,2012*). To our knowledge, high-resolution, model-based risk estimates of *O. viverrini* infection are unavailable in the whole endemic region of Southeast Asia.

Bayesian geostatistical modeling is one of the most rigorous inferential approaches for high-resolution maps depicting the distribution of the disease risk (*Karagiannis-Voules, et al.,2015*). Geostatistical modeling relates geo-referenced disease data with potential influencing factors (e.g., socioeconomic and environmental factors) and estimates the infection risk in areas without observed data (*Gelfand and Banerjee,2017*). Common geostatistical models are usually based on point-referenced survey data (*Banerjee, et al.,2014*). In practice, disease data collected from various sources often consists of point-referenced and area-aggregated data. Bayesian geostatistical joint modeling approaches provide a flexible framework for combining analysis of both kinds of data (*Moraga, et al.,2017; Smith, et al.,2008*). In this study, we aimed (1) to collect all available survey data on the prevalence of *O. viverrini* infection at point- or area-level in Southeast Asia through systematic review; and (2) to estimate the spatial-temporal distribution of the disease risk at a high spatial resolution, with the application of advanced Bayesian geostatistical joint modeling approach.

## Results

A total of 2,690 references were identified through systematically reviewing peer-review literatures, and 13 additional references were gathered from other sources. According to the inclusion and exclusion criteria, 170 records were included, resulted in a total of 593 area-level surveys in 174 areas and 524 point-level surveys at 396 locations in five endemic countries (ie, Cambodia, Lao PDR, Myanmar, Thailand and Vietnam) of Southeast Asia (Figure 1). Around 70% and 15% of surveys were conducted in Thailand and Lao PDR, respectively. Only two relevant records were obtained from Myanmar. To avoid large estimated errors, we did not include this data in the final geostatistical analysis. All surveys were conducted after 1970, with more than two third done after 2000. Most surveys (95%) are community-based. Around 40% of surveys used the Kato-Katz technique for diagnosis, while another 41% did not specify diagnostic approaches. Mean prevalence calculated directly from survey data was 16.82% across the study region. A summary of survey data is listed in Table 1, and survey locations and observed prevalence in each period are shown in Figure 2. Area-level data cover all regions in Thailand

108 and Lao PDR, and most regions in Cambodia and Vietnam, whilst point-referenced data are absent in  
 109 most areas of Vietnam, the western part of Cambodia and southern part of Thailand.



111 **Figure 1. Data search and selection flow chart.**

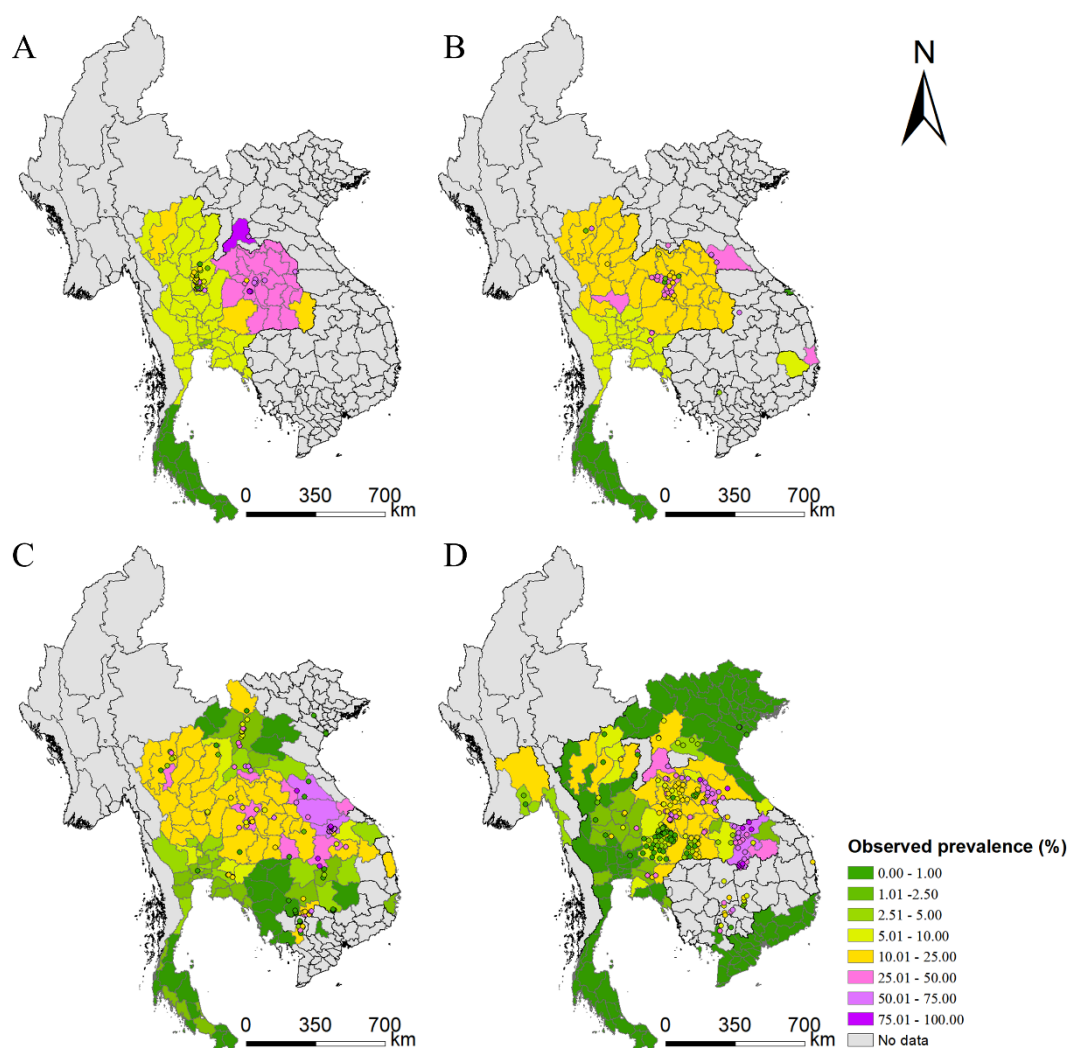
112 **Table 1. Overview of opisthorchiasis survey data in Southeast Asia**

	Cambodia	Lao PDR	Myanmar	Thailand	Vietnam	Total
Relevant papers	14	44	2	98	15	170
Total surveys/locations	91/73	166/99	6/6	783/338	71/64	1117/580
Survey type (surveys/locations)						
School	33/31	4/4	0/0	14/14	0/0	51/49
Community	58/46	162/97	6/6	769/328	71/64	1066/541
Location type (surveys/locations)						
Point-level	69/54	102/81	3/3	343/251	7/7	524/396
Area-level	22/19	64/18	3/3	440/77	64/57	593/174
Period	1998-2016	1989-2016	2015-2016	1978-2018	1991-2015	1978-2018
Year of Survey (surveys/locations)						
<=1989	0/0	2/2	0/0	138/118	0/0	140/120
1990-1999	1/1	11/6	0/0	126/103	7/3	145/113
2000-2009	67/57	76/56	0/0	202/117	8/8	353/238
>=2010	23/18	77/55	6/6	317/243	56/55	479/377
Diagnostic methods (surveys/locations)						

	Cambodia	Lao PDR	Myanmar	Thailand	Vietnam	Total
Kato-Katz	86/70	128/83	3/3	215/167	7/7	439/330
FECT	2/2	17/13	3/3	112/102	0/0	134/120
Stoll's	0/0	0/0	0/0	38/28	0/0	38/28
PCR	0/0	5/4	0/0	1/1	0/0	6/5
Combined	3/3	14/13	0/0	21/17	0/0	38/33
Others	0/0	1/1	0/0	6/6	0/0	7/7
NS*	0/0	6/6	0/0	391/111	64/57	461/174
Mean prevalence (%)	10.56%	38.63%	4.93%	14.30%	2.65%	16.82%

113 \*NS: not stated or missing

114



115

116 **Figure 2. Survey locations and observed prevalence of *O. viverrini* infection in endemic countries**

117 **of Southeast Asia. (A) Before 1990, (B) 1990-1999, (C) 2000-2009, and (D) from 2010 onwards.**

118 Five variables were selected for the final model through the Bayesian variable selection process (Table 2).

119 The infection risk was significantly high in the community population in comparison to that of school-

aged children. Positive associations were identified between the prevalence of *O. viverrini* and human influence index as well as travel time to the nearest big city. Annual precipitation was negatively correlated to the infection risk. People living in areas with distance to the nearest open water bodies longer than 1.5 km showed a negative risk with a posterior probability of 97.2%, compared to that with distance smaller than 0.5 km. The AUC was 0.79, indicating the Bayesian joint model had a reasonable capacity of prediction accuracy. The model performance was much better than that of the model only based on point-referenced data (appendix p 10).

**Table 2. Posterior summaries of model parameters**

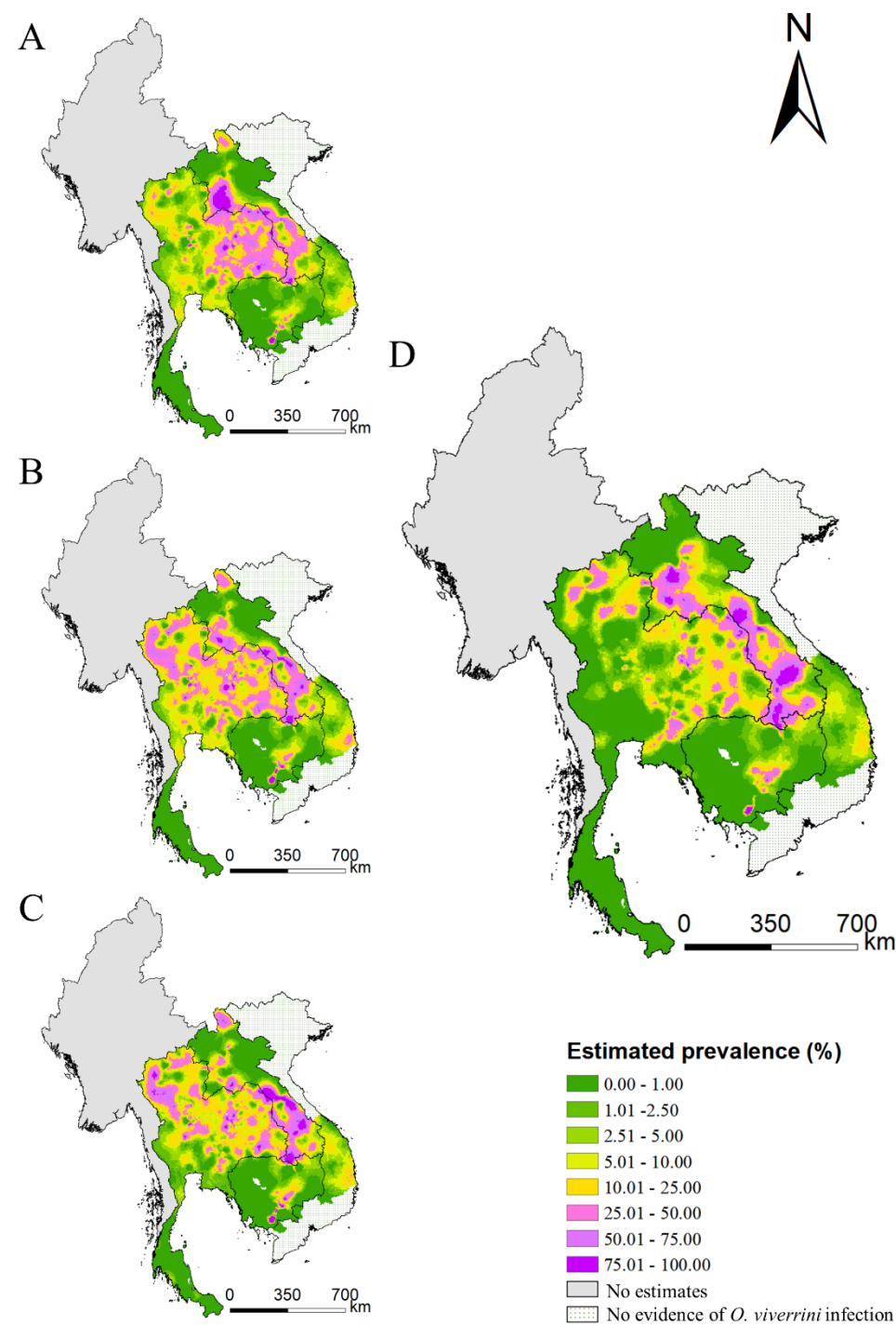
	Estimated median (95% BCI)	Prob (%) <sup>†</sup>
Survey type		
School-based survey	Ref	-
Community-based survey	0.34 (0.16, 0.51)*	> 99.99%
Annual precipitation	-0.14 (-0.25, -0.03)*	0.20
Human influence index	0.18 (0.11, 0.25)*	> 99.99%
Distance to the nearest open water bodies (km)		
< 0.50	Ref	-
0.50 - 1.50	-0.06 (-0.19, 0.07)	17.60%
> 1.50	-0.17 (-0.34, 0.00)	2.80%
Travel time to the nearest big city (min)		
< 35.68	Ref	-
35.68 - 86.67	0.69 (0.48, 0.91)*	> 99.99%
> 86.67	0.75 (0.51, 1.00)*	> 99.99%
Spatial range (km)	61.75 (53.63, 71.08)	-
Temporal correlation coefficient $\rho$	0.85 (0.79, 0.89)	-
Spatial variance $\sigma_{\phi}^2$	22.22 (18.36, 26.70)	-

<sup>†</sup>posterior probability of the coefficient larger than zero;

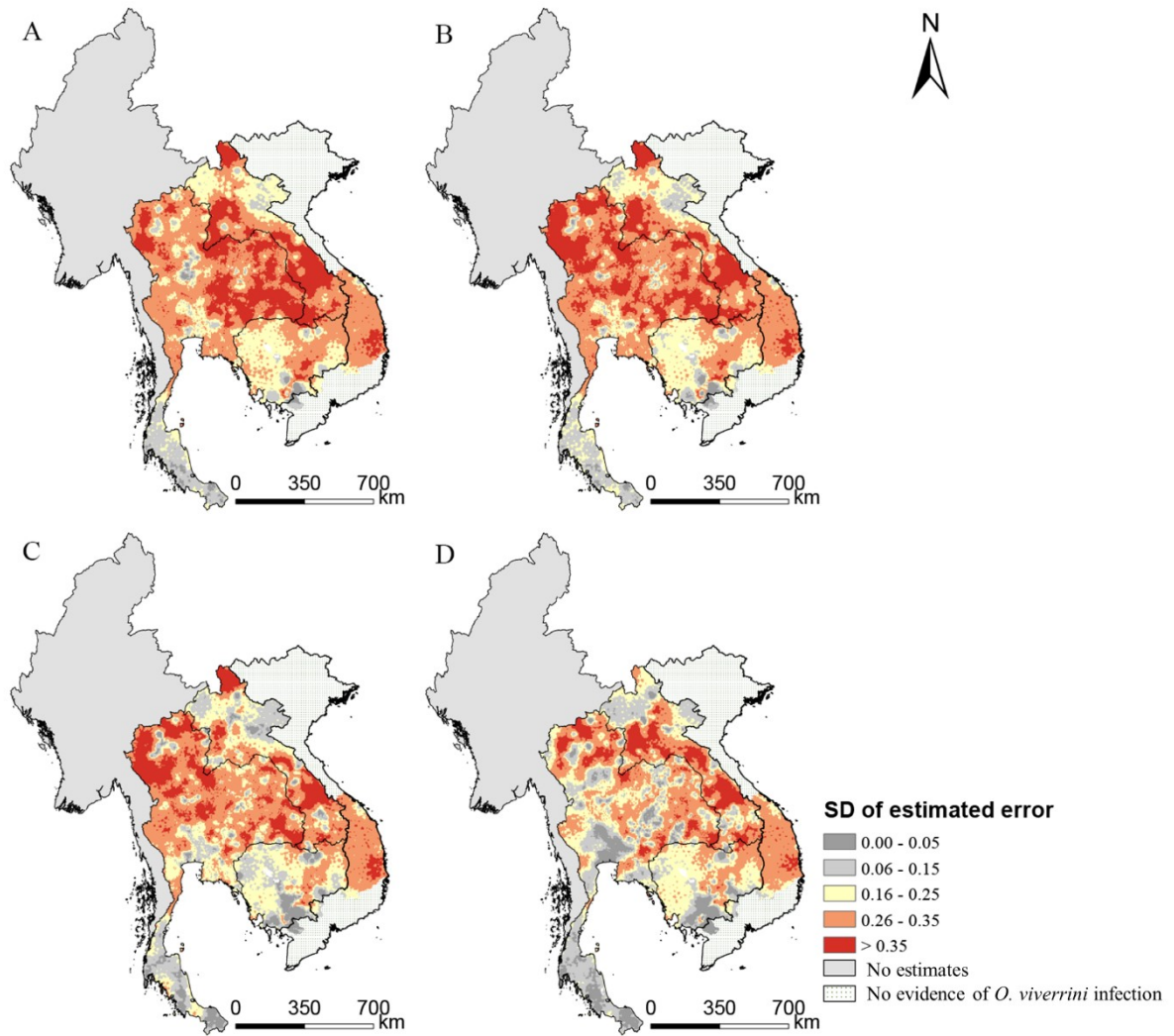
\*Significant based on 95% Bayesian credible interval (BCI).

The estimated risk maps of *O. viverrini* infection for the four periods (ie, before 1990, 1990-1999, 2000-2009, and from 2010 onwards) are presented in Figure 3. From 2010 onwards, the high infection risk (with prevalence >25%) was mainly estimated in regions of the southern, the central and the north-central parts of Lao PDR, some areas in the east-central and the southern parts of Cambodia, and some areas of the northeastern and the northern parts Thailand. The southern part of Thailand, the northern part of Lao PDR, and the western part of Cambodia showed low risk estimates (with prevalence <5%) of *O. viverrini* infection. The central and several southern parts of Vietnam showed low to moderate risk of *O. viverrini* infection, while there was no evidence of *O. viverrini* in other parts of Vietnam. High estimation

uncertainty was mainly present in the central part of Lao PDR, the northern and the eastern parts of Thailand, and the central part of Vietnam (Figure 4).

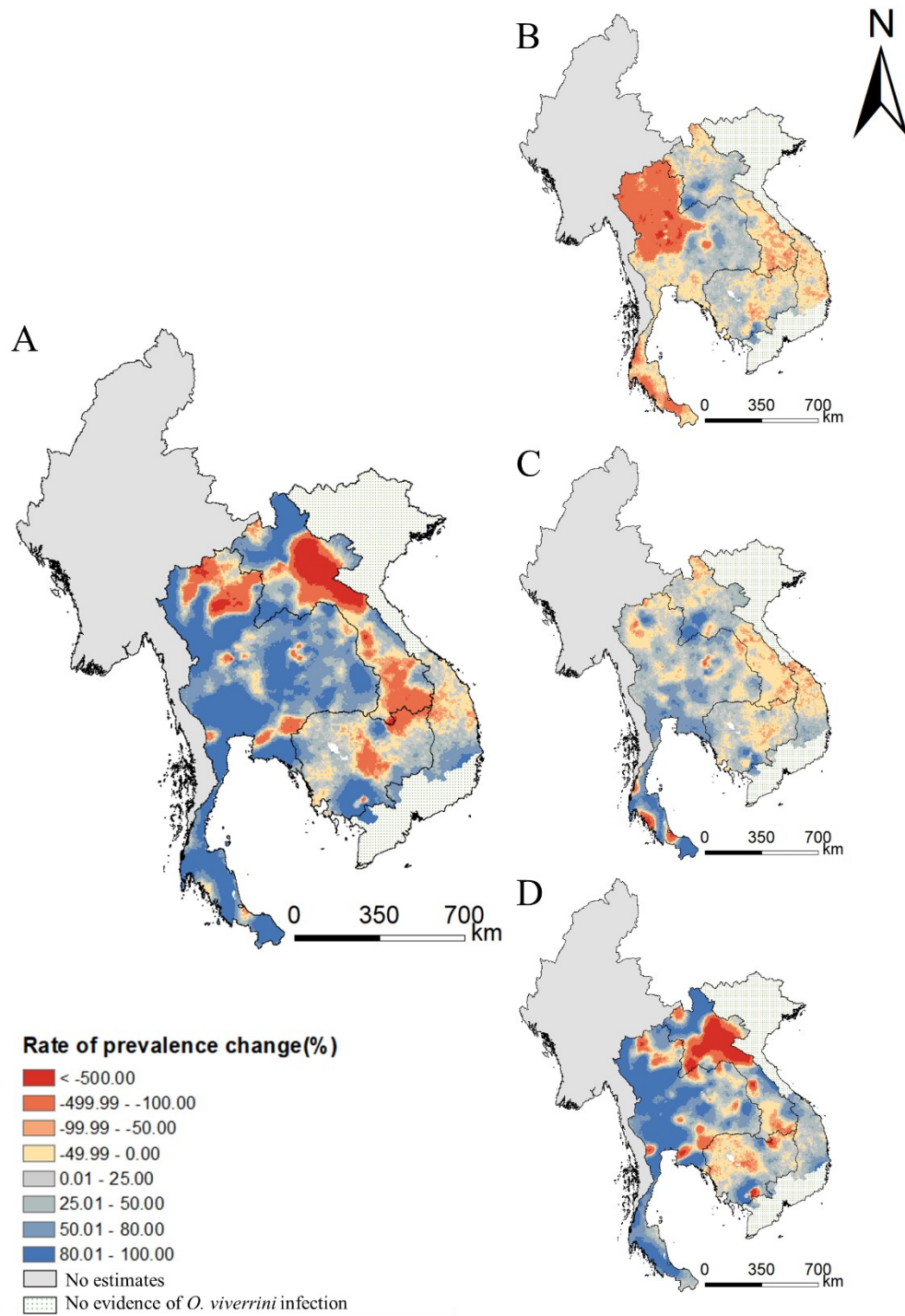


**Figure 3. Model-based estimated risk maps of *O. viverrini* infection in endemic countries of Southeast Asia.** Estimated prevalence based on the median of the posterior estimated distribution of infection risk for periods (A) before 1990, (B) 1990-1999, (C) 2000-2009, and (D) from 2010 onwards.



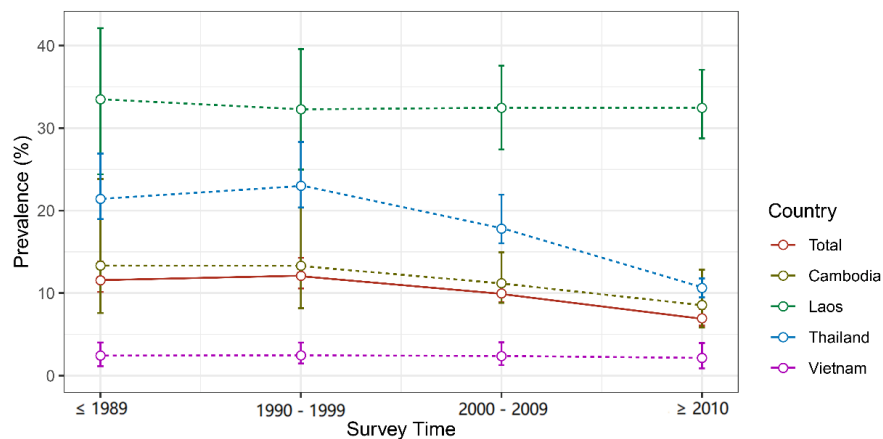
**Figure 4. The estimation uncertainty in endemic countries of Southeast Asia. (A) Before 1990, (B) 1990-1999, (C) 2000-2009, and (D) from 2010 onwards.**

In addition, the infection risk varies over time (Figure 5). Most areas of northern Thailand showed an obvious increasing trend from the period before 1990 to 1990-1999, while many areas of the country presented a considerable decrease of infection risk after 2000. The infection risk kept increasing in most areas of the central and the southern parts of Lao PDR, while the north-central part firstly decreased and then increased. The east-central part of Cambodia showed an increasing trend between 2000-2009 and 2010 onwards, while the infection risk changed slightly in central parts of Vietnam.



**Figure 5. Changes of *O. viverrini* infection risk across time periods.** Changes were calculated by the median of the posterior estimated distribution of infection risk for the former time period minus that for the latter time period divided by that for the former time period. The risk changes (A) between the period before 1989 and from 2010 onwards; (B) between the period before 1989 and 1990-1999; (C) between the period 1990-1999 and 2000-2009; and (D) between the period 2000-2009 and from 2010 onwards.

The population-adjusted estimated prevalence over the study region presents a trend down after 2000 (Figure 6 and appendix pp 13-17). At the country-level, the estimated prevalence in Thailand showed a fast decline from 2000 onwards, and took on a gradually decreasing change in Cambodia, while it maintained quite stable in Lao PDR and Vietnam during the whole study period. Particularly, we estimated that in 2018, the overall population-adjusted estimated prevalence of *O. viverrini* infection in the whole study region was 6.96% (95% BCI: 6.06%-8.06%), corresponding to 13.13 million (95% BCI: 11.43-15.21) infected individuals (Table 3). Lao PDR showed the highest prevalence (32.47%, 95% BCI: 28.75%-37.08%), followed by Thailand (10.63%, 95% BCI: 9.48%-11.76%), Cambodia (8.57%, 95% BCI: 5.83%-12.85%), and Vietnam (2.14%, 95% BCI: 0.89%-3.95%). Thailand had the largest numbers of individuals estimated to be infected with *O. viverrini* (7.34 million, 95% BCI: 6.55-8.13), followed by Lao PDR (2.26 million, 95% BCI: 2.00-2.58), Vietnam (2.06 million, 95% BCI: 0.86-3.81), and Cambodia (1.39 million, 95% BCI: 0.95-2.08).



**Figure 6. Trends in estimated prevalence of *O. viverrini* infection in Southeast Asia.**

**Table 3. Population-adjusted estimated prevalence and number of individuals infected with *O. viverrini* in endemic countries of Southeast Asia\***

	Population ( $\times 10^3$ )	Prevalence (%)	No. infected ( $\times 10^3$ )
Cambodia	16227.39	8.57% (5.83%, 12.85%)	1390.39 (945.79, 2084.47)
Lao PDR	6960.28	32.47% (28.75%, 37.08%)	2259.77 (2000.91, 2580.64)
Thailand	69112.64	10.63% (9.48%, 11.76%)	7343.56 (6551.40, 8129.65)
Vietnam	96421.69	2.14% (0.89%, 3.95%)	2061.88 (859.84, 3810.27)
Total	188722.01	6.96% (6.06%, 8.06%)	13134.84 (11433.70, 15209.68)

\*Estimates were based on gridded population of 2018 and the median and 95% BIC of the posterior estimated distribution of the infection risk from 2010 onwards.

177

## 178 **Discussion**

179 In this study, we produced model-based, high-resolution risk estimates of opisthorchiasis across endemic  
180 countries of Southeast Asia through systematic reviewing and the advanced Bayesian geostatistical joint  
181 modeling approach. The disease is the most important foodborne trematodiasis in the study region (*Sripa,*  
182 *et al.,2010*), taking into account most of the disease burden of opisthorchiasis in the world (*Fürst, et*  
183 *al.,2012*). The estimates were obtained by systematically reviewing all possible geo-referenced survey  
184 data and applying a Bayesian geostatistical modeling approach that jointly analyzes point-referenced and  
185 area-aggregated disease data, as well as environmental and socioeconomic predictors. Our findings will  
186 be important for guiding control and intervention cost-effectively and serve as a baseline for future  
187 progress assessment.

188 Our estimates suggested that there was an overall decrease of *O. viverrini* infection in Southeast Asia,  
189 which may be largely attributed to the decline of infection prevalence in Thailand. This decline was  
190 probably on account of the national opisthorchiasis control program launched by the Ministry of Public  
191 Health of Thailand from 1987 (*Jongsuksuntigul and Imsomboon,2003; Jongsuksuntigul, et al.,2003*).  
192 Our high-resolution risk estimates in Thailand from 2010 onwards showed similar pattern as the climatic  
193 suitability map provided by Suwannatrat and colleagues (*Suwannatrat, et al.,2017*). In this case, we  
194 estimated the prevalence of the population instead of the occurrence probability of the parasite, which  
195 arms decision makers with more direct epidemiological information for guiding control and intervention.  
196 The national surveys in Thailand reported a prevalence of 8.7% and 5.2% in 2009 and 2014, respectively  
197 (*MOPH,2014; Wongsaroj, et al.,2014*). However, we estimated higher prevalence of 17.81% (95% BCI:  
198 16.04%-21.94%) and 10.63% (95% BCI: 9.48%-11.76%) in the periods 2000-2009 and from 2010  
199 onwards, respectively. Even though the national surveys covered most provinces in Thailand, estimates  
200 were based on simply calculating the percentage of positive cases among all the participants (*Wongsaroj,*  
201 *et al.,2014*), and the remote areas might not be included (*Maipanich, et al.,2004*). Instead, our estimates  
202 were based on rigorous Bayesian geostatistical modeling of available survey data with environmental  
203 and socioeconomic predictors, accounting for heterogeneous distribution of infection risk and population  
204 density when aggregating country-level prevalence.

Our findings suggested that the overall infection risk of *O. viverrini* did not decline in Lao PDR during the study periods, consistent with conclusions drawn by Suwannatrai and colleagues (*Suwannatrai, et al.,2018*). We estimated that a total number of 2.26 (95% BCI: 2.00-2.58) million people living in Lao PDR was infected with *O. viverrini*, equivalent to that estimated by WHO in 2004 (*WHO,2002*). Besides, our risk mapping for Champasack province shares similarly risk map pattern produced by Forrer and colleagues (*Forrer, et al.,2012*). A national-scaled survey in Cambodia during the period 2006-2011 reported infection rate of 5.7% (*Yong, et al.,2014*), lower than our estimation of 8.57% (95% BCI: 5.83%-12.85%) from 2010 onwards. The former may underestimate the prevalence because more than 77% of participants were schoolchildren (*Yong, et al.,2014*). Another large survey in five provinces of Cambodia suggested a large intra-district variation, which makes the identification of endemic areas difficult (*Miyamoto, et al.,2014*). Our high-resolution estimates for Cambodia help to differentiate the intra-district risk. However, the estimates should be taken cautious due to large district-wide variances and a relatively small number of surveys. Indeed, *O. viverrini* infection was underreported in Cambodia (*Khieu, et al.,2019*), and further point-referenced survey data are recommended for more confirmative results.

Although an overall low prevalence was estimated in Vietnam (2.13%, 95% BCI: 0.89%-3.95%) from 2010 onwards, it corresponds to 2.06 million (95% BCI: 0.86%-3.81%) people infected, comparable to the number in Lao PDR, mainly due to a larger population in Vietnam. The risk mapping suggested moderate to high risk areas presented in central Vietnam, with the highest risk in Phu Yen province, particularly. This agreed with previous studies considering the province a “hotspot” (*Doanh and Nawa,2016*). Of note, even though there was no evidence of *O. viverrini* infection in the northern part of the country, *Clonorchis sinensis*, another important liver fluke species, is endemic in the region (*Sithithaworn, et al.,2012*). We didn’t provide estimates for Myanmar in case of large estimated errors. Indeed, only two relevant papers were identified by our systematic review, where one shows low to moderate prevalence in three regions of Lower Myanmar (*Aung, et al.,2017*), and the other found low endemicity of *O. viverrini* infection in three districts of the capital city Yangon (*Sohn, et al.,2019*). Nation-wide epidemiological studies are urgent for a more comprehensive understanding of the disease in Myanmar.

We identified several important factors associated with *O. viverrini* infection in Southeast Asia, which may provide insights for the prevention and control of the disease. The infection risk was higher in the entire community than that in schoolchildren, consistent with multiple studies (Aung, et al.,2017; Forrer, et al.,2012; Miyamoto, et al.,2014; Van De,2004; Wongsaroj, et al.,2014). HII, a measure of human direct influence on ecosystems (Sanderson, et al.,2002), showed a positive relationship with *O. viverrini* infection risk. A similar association has been found on HII and *A. lumbricoides* infection in South Asia (Lai, et al.,2019). People living in areas with a longer distance to the nearest open water bodies tended to have lower risk, consistent with the previous finding (Forrer, et al.,2012). We found annual precipitation negatively associated with *O. viverrini* infection, consistent with the previous study conducted in Southern Lao PDR (Forrer, et al.,2012). Higher precipitation might decrease the disease transmission by creating fast-flowing water unsuitable for intermediate host snail survival (McCreesh and Booth,2013). A negative association was found between *O. viverrini* infection and travel time to the nearest big city, suggesting the disease was more likely to occur in rural areas. The habit of eating raw or insufficiently cooked fish was more common in rural areas than that in big cities, which could partially explain our findings (Grundy-Warr, et al.,2012; Keiser and Jennifer,2019). Indeed, this culturally rooted habit is one of the determinants for human opisthorchiasis (Kaewpitoon, et al.,2008; Ziegler, et al.,2011). However, the precise geographical distribution of such information is unavailable and thus we could not use it as a covariate in this study.

Our estimate of the number of people infected with *O. viverrini* is higher than that of the previous study (13.1 million vs 8.6 million (Qian and Zhou,2019)) emphasizing the public health importance of this neglected disease in Southeast Asia, and suggesting that more effective control interventions should be conducted, particularly in the high risk areas. The successful experience in the intervention of Thailand may be useful for reference by other endemic countries of the region. The national opisthorchiasis control program, supported by the government of Thailand, applied interrelated approaches, including stool examination and treatment of positive cases, health education aiming at the promotion of cooked fish consumption, and environmental sanitation to improve hygienic defecation (Jongsuksuntigul and Imsomboon,2003). In addition, for areas with difficulties to reduce infection risk, a new strategy was developed by Sripa and colleagues, using the EcoHealth approach with anthelmintic treatment, novel intensive health education on both communities and schools, ecosystem monitoring, and active

participation of the community (*Sripa, et al.,2015*). This “Lawa model” shows good effectiveness in Lawa Lake area, where the liver fluke was highly endemic (*Sripa, et al.,2015*). Furthermore, common integrated control interventions (eg, combination of preventive chemotherapy with praziquantel, improvement of sanitation and water sources, and health education) are applicable not only for opisthorchiasis but also for other NTDs, such as soil-transmitted helminth infection and schistosomiasis, which are also prevalent in the study region (*Dunn, et al.,2016; Gordon, et al.,2019*). Implementation of such interventions in co-endemic areas could be cost-effective (*Baker, et al.,2011; WHO,2012*).

Frankly, several limitations exist in our study. We collected data from different sources, locations of which might not be random and preferential sampling might exist. Nevertheless, we performed a risk-preferential sampling test and no significant preferential sampling was found, indicating the data good representative across the study region (appendix p 11). We assumed similar proportions of age and gender in different surveys, as most of which only reported prevalence aggregated by age and gender. Nevertheless, considering the possible differences in infection risk between the whole population and schoolchildren, we categorized survey types to the community- and school-based. We set clear criteria for selection of all possible qualified surveys and didn’t exclude surveys that only reported prevalence without numbers of examination or those reported prevalence in intervals without exact observed values. Data imputation was undertaken and sensitivity analysis showed that the setting of the imputation had little effects on the final results (appendix pp 18-22). Our analysis was based on survey data under different diagnostic methods. The sensitivity and specificity of the same diagnostic method may differ across studies (*Charoensuk, et al.,2019; Laoprom, et al.,2016; Sayasone, et al.,2015*), while different diagnostic methods may result in different results in the same survey. Due to the lack of enough information on the assessment of the quality and procedure of the diagnostic approach in each survey, we assumed similar diagnostic sensitivity and specificity across surveys (*Lu, et al.,2017*). In addition, most of the diagnostic methods in the surveys were based on fecal microscopic technique on eggs, which could not effectively distinguish between *O. viverrini* and minute intestinal flukes of the family Heterophyidae (eg heterophyid and lecithodendriid) (*Charoensuk, et al.,2019; Sato, et al.,2010*). Thus, our results may overestimate the *O. viverrini* infection risk in areas where heterophyid and lecithodendriid are endemic, such as Phongsaly, Saravane and Champasak provinces in Lao PDR (*Chai, et al.,2013; Chai, et al.,2010; Sato, et al.,2010*), Nan and Lampang provinces in Thailand (*Wijit, et*

*al.*,2013), and Takeo province in Cambodia (*Sohn,2011*). There is an urgent need for the application of more powerful diagnostic practices with higher sensitivity and specificity to better detect the true *O. viverrini* prevalence, such as PCR (*Lovis, et al.,2009; Lu, et al.,2017; Sato, et al.,2010*). Nevertheless, because of the similar treatment and the prevention strategies of *O. viverrini* and minute intestinal flukes (*Keiser and Utzinger,2010*), our risk mapping is valuable also for areas co-endemic with the above flukes.

In conclusion, this study contributes to better understand the spatial-temporal characteristics of *O. viverrini* infection in major endemic countries of Southeast Asia, providing valuable information guiding control and intervention, and serving as a baseline for future progress assessment. Estimates were based on a rigorous geostatistical framework jointly analyzing point- and areal level survey data with potential predictors. The higher number of infected people we estimated highlights the public health importance of this neglected disease in the study region. More comprehensive epidemiological studies are urgently needed for endemic areas with scant survey data.

## **Materials and Methods**

### **Search strategy, selection criteria and data extraction**

We did a systematic review (registered in the International Prospective Register of Systematic Reviews, PROSPERO, No.CRD42019136281) following the PRISMA guidelines (appendix pp 43-44) to collect relevant publications reporting prevalence data of opisthorchiasis in Southeast Asia (*Moher, et al.,2010*).

We searched PubMed and ISI Web of Science from inception to February 9, 2020, with search terms: (liver fluke\* OR Opisthorchi\*) AND (Southeast Asia OR Indonesia OR (Myanmar OR Burma) OR Thailand OR Vietnam OR Malaysia OR Philippines OR Lao PDR OR Cambodia OR Timor OR Brunei OR Singapore). We set no limitations on language, date of survey, or study design in our search strategy.

We followed a protocol for inclusion, exclusion and extraction of survey data (appendix pp 4-5). Firstly, we screened titles and abstracts to identify potentially relevant articles. Publications on in vitro studies, or absence of human studies or absence of disease studies were excluded. Quality control was undertaken by re-checking 20% of randomly selected irrelevant papers. Second, the full-text review was applied to potentially relevant articles. We excluded publications with following conditions: absence of prevalence data; studies done in specific patient groups (eg, prevalence on patients with specific diseases), in specific

population groups (eg, travelers, military personnel, expatriates, nomads, displaced or migrating population), under specific study designs (eg, case report studies, case-control studies, clinical trials, autopsy studies); drug efficacy or intervention studies (except for baseline data or control groups), population deworming within one year, the survey time interval more than ten years, data only based on the direct smear method (due to low sensitivity) or serum diagnostics (due to unable to differ the past and the active infection). During the full-text review, the potential relevant cited references of the articles were also screened. Studies were included if they reported survey data at provincial level and below, such as administrative divisions of level one to three (ADM1: province, state, etc.; ADM2: city, etc.; ADM3: county, etc.), and at point-level (village, town, school, etc.). Duplicates were checked and removed. The quality assessment of each individual record included in the final geostatistical analysis was performed by two independent reviewers, based on a quality evaluation list (appendix pp 23-40).

We extracted data following the GATHER checklist (appendix pp 41-42) (*Stevens, et al.,2016*). Detailed information of records were extracted into a database, which includes literature information (eg, journal, authors, publication date, title, volume, and issue), survey information (eg, survey type: community- or school-based, year of survey), location information (eg, location name, location type, coordinates), and disease related data (eg, species of parasites, diagnostic method, population age, number of examined, number of positive, and percentage of positive). The coordinates of the survey locations were obtained from Google Maps (<https://www.google.com/maps/>). Considering that areas are much smaller of ADM2 or ADM3, compared to that of ADM1, we treated surveys aggregated in ADM2 or ADM3 as point-level georeferenced at division centroids referring to previous studies (*Lai, et al.,2019*), while surveys aggregated over ADM1 as area-level, in order to avoid large uncertainty in the later geostatistical analysis.

Missing data imputation was undertaken: (1) for surveys that only reported prevalence without numbers of examined, a sample size of 50 was assigned to point-referenced surveys, while a sample size of 500 was assigned to area-level surveys; (2) for surveys reported prevalence in intervals without exact observed values, the medians of the intervals were assigned.

#### **Environmental, socioeconomic, and demographic data**

The environmental data (ie, annual precipitation, distance to the nearest open water bodies, elevation, land cover, land surface temperature in the daytime and at night and normalized difference vegetation

index), socioeconomic data (ie, human influence index, survey type, and travel time to the nearest big city), and demographic data of Southeast Asia were downloaded from open data sources (appendix p 6). All data were aligned over a 5×5 km grid across the Southeast Asia region using the “raster” package (<https://cran.r-project.org/web/packages/raster>) in R (version 3.5.0). Data at point-referenced survey locations were extracted using the same package. We linked the data to the divisions (ie, ADM1, ADM2 or ADM3) reported aggregated outcome of interest (ie, infection prevalence) by averaging them within the corresponding divisions. Details of data processing are available in the appendix (p 7).

### Statistical analysis

As our outcome of interest derived from both point-referenced and area-aggregated surveys, a Bayesian geostatistical joint modeling approach was applied to analyze the area-level and point-level survey data together (Moraga, et al.,2017; Utazi, et al.,2019).

A latent spatial-temporal process following a zero-mean Gaussian distribution was introduced to model the covariance of data residuals in space and time. The survey years were grouped into four periods: before 1990, 1990-1999, 2000-2009, and from 2010 onwards and  $t = 1, 2, 3, 4$  were set to represent the corresponding periods, respectively. We defined  $p_{it}$  the probability of infection at location  $i$  and time period  $t$ , where  $i$  is the index either for the location of point-referenced data or of the area for area-level data. Let  $Y_{it}$  and  $N_{it}$  be the number of positive and the number of examined individuals, respectively, at location  $i$  and time period  $t$ . We assumed that  $Y_{it}$  follows a binomial distribution, that is,  $Y_{it} \sim \text{Bin}(p_{it}, N_{it})$ , where  $i = 1, \dots, n_A, n_A + 1, \dots, n_A + n_p$ ,  $n_A$  the total number of areas for area-level surveys and  $n_p$  the total number of locations for point-referenced surveys. We modelled predictors on a logit scale of  $p_{it}$ . A standard grid of 5×5 km was overlaid to each survey area resulting in a certain number of pixels representing the area. We assumed that survey locations and pixels within survey areas shared the same spatial-temporal process. Regarding to area-level data,  $\text{logit}(p_{it}) = \widetilde{\mathbf{x}}_{it}'\boldsymbol{\beta} + |A_i|^{-1} \int_{A_i} \omega(s, t) ds dt$ , where  $i = 1, \dots, n_A$ ,  $\widetilde{\mathbf{x}}_{it}$  the vectors of covariate values for  $i^{th}$  area in time period  $t$  with  $\widetilde{\mathbf{x}}_{it}' = |A_i|^{-1} \int_{A_i} \omega(s, t) ds dt$  and  $\boldsymbol{\beta}$  are the corresponding regression coefficients.  $|A_i| = \int_{A_i} 1 ds$  is the size of the  $i^{th}$  area and  $\omega(s, t)$  the spatial-temporal random effects of pixels within the area. For point-referenced data,  $\text{logit}(p_{it}) = \mathbf{x}_{it}'\boldsymbol{\beta} + \omega(s_i, t)$ , where  $i = n_A + 1, \dots, n_A + n_p$ ,  $\mathbf{x}_{it}'$  the vectors of covariate values and  $\omega(s_i, t)$  the spatial-temporal random effect for  $i^{th}$  location in

time period  $t$ . We assumed the spatio-temporal random effect  $\omega(s, t)$  follow a zero-mean Gaussian distribution, that is  $\omega \sim GP(0, \mathbf{K}_{space} \otimes \mathbf{K}_{time})$ , where the spatial covariance matrix  $\mathbf{K}_{space}$  was defined as a stationary Matérn covariance function  $\sigma_\phi^2(\kappa \mathbf{D})^\nu K_\nu(\kappa \mathbf{D}) / (\Gamma(\nu) 2^{\nu-1})$  and the temporal covariance matrix as  $\mathbf{K}_{time} = \rho^{|t_u - t_o|}$  with  $|\rho| < 1$ , corresponding to the autoregressive stochastic process with first order (AR1). Here  $\mathbf{D}$  donates the Euclidean distance matrix,  $\kappa$  is a scaling parameter and the range  $r = \sqrt{8\nu}/\kappa$ , representing the distance at which spatial correlation becomes negligible ( $< 0.1$ ), and  $K_\nu$  is the modified Bessel function of the second kind, with the smoothness parameter  $\nu$  fixed at 1. We formulated the model in a Bayesian framework. Minimally informative priors were specified for parameters and hyper parameters as following:  $\boldsymbol{\beta} \sim N(0, 10^5 \mathbf{I})$ ,  $\log(1/\sigma_\phi^2) \sim \text{logGamma}(1, 0.01)$ ,  $\log((1 + \rho)/(1 - \rho)) \sim N(0, 0.15)$ , and  $\log(\kappa) \sim N(\log(\sqrt{8}/m), 1)$ , where  $m$  is the median distance between the predicted grids.

Additionally, we used the best subset variable selection method to find out the best combination of predictors for the final model (Karagiannis-Voules, et al., 2015). According to previous studies (Aung, et al., 2017; Forrer, et al., 2012; Miyamoto, et al., 2014; Wongsaroj, et al., 2014), the infection risk in community and school may be different, thus the survey type (ie, community- or school-based) was kept in all potential models, while the other ten environmental and socioeconomic variables mentioned above were put forth into the Bayesian variable selection process. The model with a minimum log score was chosen as the final model.

Model fitting and variable selection process were conducted through INLA-SPDE approach (Lindgren, et al., 2011; Rue, et al., 2009), using integrated nested Laplace approximation (INLA) package in R (version 3.5.0). Estimation of risk for *O. viverrini* infection during each time period was done over a grid with cell size of 5×5 km. The corresponding risk maps were produced using ArcGIS (version 10.2). In addition, the population-adjusted estimated prevalence and number of infected individuals in 2018 were calculated at the country- and provincial levels based on pixel-level estimates and gridded demographic information. Based on previous studies, for the provinces in Vietnam where there was no evidence of *O. viverrini* infection, we multiplied the estimated results by zero as the final estimated prevalence (Doanh and Nawa, 2016). Model validation was conducted using the five-fold out-of-sample cross-validation approach. The predictive accuracy was assessed under the receiver-operating characteristic (ROC) curve by calculating the area under the curve (AUC) (Brooker, et al., 2001). Correlation coefficient between

observed and estimated prevalence values was calculated (appendix p 10). Furthermore, a Bayesian geostatistical model only based on point-referenced data was fit and validated, to compared its performance with our joint modeling approach. Considering that the data in this study were sourced from different studies, a test for detecting preferential sampling of spatial-temporal processes is implemented (appendix p 11) (*Watson,2020*). In addition, a sensitivity analysis was conducted to evaluate the effects of imputation on missing data (appendix pp 18-22).

## Additional information

### Funding

Funder	Grant reference number	Author
The Sun Yat-Sen University One Hundred Talent Grant	-	Ying-Si Lai
The Natural Science Foundation of Guangdong Province	2017A030313704	Ying-Si Lai
The National Natural Science Foundation of China	81703320	Ying-Si Lai
The CMB Open Competition Program	17-274	Ying-Si Lai
The funders had no role in study design, data collection and interpretation, or the decision to submit the work for publication.		

### Author contributions

TTZ, HYT, and YSL made substantial contributions to the study concept and design. TTZ, YJF, and PND made substantial contributions to data collection. TTZ and YSL made substantial contributions to data analysis, and interpretation. TTZ and YSL were in charge of the manuscript draft. PND, SS, VK, CN, MBQ, YTH, and YSL made substantial revisions to the manuscript.

### Acknowledgments

We are grateful to Dr Roy Burstein from Institute for Disease Modeling, Bellevue, Washington, USA for providing very good suggestions for the manuscript.

### Competing interests

The authors declare that no competing interests exist.

## References

- Andrews RH, Sithithaworn P, Petney TN. 2008. *Opisthorchis viverrini*: an underestimated parasite in world health. *Trends in Parasitology* **24**:497-501. doi:10.1016/j.pt.2008.08.011
- Aung WPP, Htoon TT, Tin HH, Thinn KK, Sanpool O, Jongthawin J, Sadaow L, Phosuk I, Rodpai R, Intapan PM, Maleewong W. 2017. First report and molecular identification of *Opisthorchis viverrini* infection in human communities from Lower Myanmar. *PLOS ONE* **12**:e177130. doi:10.1371/journal.pone.0177130
- Baker M, Hanson C, Ottesen EA, Linehan M, Torres S, Sankara D, Zoerhoff KL, Weaver A, Kabore A. 2011. Integrated Implementation of Programs Targeting Neglected Tropical Diseases through Preventive Chemotherapy: Proving the Feasibility at National Scale. *The American Journal of Tropical Medicine and Hygiene* **84**:5-14. doi:10.4269/ajtmh.2011.10-0411
- Banerjee S, Carlin BP, Gelfand AE. 2014. Hierarchical Modeling and Analysis for Spatial Data, Second Edition. Boca Raton, FL: Chapman & Hall/CRC Press.
- Brooker S, Hay SI, Issae W, Hall A, Kihamia CM, Lwambo NJS, Wint W, Rogers DJ, Bundy DAP. 2001. Predicting the distribution of urinary schistosomiasis in Tanzania using satellite sensor data. *Tropical Medicine & International Health* **6**:998-1007. doi:10.1046/j.1365-3156.2001.00798.x
- Chai J, Yong T, Eom KS, Min D, Jeon H, Kim T, Jung B, Sisabath L, Insisiengmay B, Phommasack B, Rim H. 2013. Hyperendemicity of *Haplorchis taichui* Infection among Riparian People in Saravane and Champasak Province, Lao PDR. *The Korean Journal of Parasitology* **51**:305-311. doi:10.3347/kjp.2013.51.3.305
- Chai J, Yong T, Eom KS, Min D, Shin E, Banouvong V, Insisiengmay B, Insisiengmay S, Phommasack B, Rim H. 2010. Prevalence of the Intestinal Flukes *Haplorchis taichui* and *H. yokogawai* in a Mountainous Area of Phongsaly Province, Lao PDR. *The Korean Journal of Parasitology* **48**:339-342. doi:10.3347/kjp.2010.48.4.339
- Charoensuk L, Subrungruang I, Mungthin M, Pinlaor S, Suwannahitatorn P. 2019. Comparison of stool examination techniques to detect *Opisthorchis viverrini* in low intensity infection. *Acta Tropica* **191**:13-16. doi:10.1016/j.actatropica.2018.12.018
- Doanh PN, Nawa Y. 2016. *Clonorchis sinensis* and *Opisthorchis spp.* in Vietnam: current status and prospects. *Transactions of the Royal Society of Tropical Medicine and Hygiene* **110**:13-20. doi:10.1093/trstmh/trv103
- Dunn JC, Turner HC, Tun A, Anderson RM. 2016. Epidemiological surveys of, and research on, soil-transmitted helminths in Southeast Asia: a systematic review. *Parasites & Vectors* **9**:31. doi:10.1186/s13071-016-1310-2
- Echaubard P, Sripa B, Mallory FF, Wilcox BA. 2016. The role of evolutionary biology in research and control of liver flukes in Southeast Asia. *Infection, Genetics and Evolution* **43**:381-397. doi:10.1016/j.meegid.2016.05.019
- Elith J, Phillips SJ, Hastie T, Dudík M, Chee YE, Yates CJ. 2011. A statistical explanation of MaxEnt for ecologists. *Diversity and Distributions* **17**:43-57. doi:10.1111/j.1472-4642.2010.00725.x

461 Forrer A, Sayasone S, Vounatsou P, Vonghachack Y, Bouakhasith D, Vogt S, Glaser R, Utzinger J,  
 462 Akkhavong K, Odermatt P. 2012. Spatial distribution of, and risk factors for, *Opisthorchis viverrini*  
 463 infection in southern Lao PDR. *PLOS Neglected Tropical Diseases* **6**:e1481.  
 464 doi:10.1371/journal.pntd.0001481

465 Fürst T, Keiser J, Utzinger J. 2012. Global burden of human food-borne trematodiasis: a systematic  
 466 review and meta-analysis. *The Lancet Infectious Diseases* **12**:210-221. doi:10.1016/S1473-  
 467 3099(11)70294-8

468 Gelfand AE, Banerjee S. 2017. Bayesian Modeling and Analysis of Geostatistical Data. *Annual Review*  
 469 *of Statistics and Its Application* **4**:245-266. doi:10.1146/annurev-statistics-060116-054155

470 Gordon C, Kurscheid J, Williams G, Clements A, Li Y, Zhou X, Utzinger J, McManus D, Gray D. 2019.  
 471 Asian Schistosomiasis: Current Status and Prospects for Control Leading to Elimination. *Tropical*  
 472 *Medicine and Infectious Disease* **4**:40. doi:10.3390/tropicalmed4010040

473 Grundy-Warr C, Andrews RH, Sithithaworn P, Petney TN, Sripa B, Laithavewat L, Ziegler AD. 2012.  
 474 Raw attitudes, wetland cultures, life-cycles: Socio-cultural dynamics relating to *Opisthorchis viverrini*  
 475 in the Mekong Basin. *Parasitology International* **61**:65-70. doi:10.1016/j.parint.2011.06.015

476 Havelaar AH, Kirk MD, Torgerson PR, Gibb HJ, Hald T, Lake RJ, Praet N, Bellinger DC, de Silva NR,  
 477 Gargouri N, Speybroeck N, Cawthorne A, Mathers C, Stein C, Angulo FJ, Devleesschauwer B. 2015.  
 478 World Health Organization Global Estimates and Regional Comparisons of the Burden of Foodborne  
 479 Disease in 2010. *PLOS Medicine* **12**:e1001923. doi:10.1371/journal.pmed.1001923

480 International Agency for Research on Cancer. 1994. Schistosomes, liver flukes and *Helicobacter pylori*.  
 481 *IARC Monographs on the Evaluation of Carcinogenic Risks to Humans* **61**:1-241.

482 Jongsuksuntigul P, Imsomboon T. 2003. Opisthorchiasis control in Thailand. *Acta Tropica* **88**:229-232.  
 483 doi:https://doi.org/10.1016/j.actatropica.2003.01.002

484 Jongsuksuntigul P, Manatrakul D, T TW, Krisanamara P, Sawatdimongkol S, Wongsaroj S. 2003.  
 485 Evaluation of the Helminthiasis Control Program in Thailand at the End of the 8th Health Development  
 486 Plan. *The Journal of Tropical Medicine and Parasitology* **26**:18-45.

487 Kaewpitoon N, Kaewpitoon SJ, Pengsaa P. 2008. Opisthorchiasis in Thailand: review and current status.  
 488 *World Journal of Gastroenterology* **14**:2297-2302.

489 Karagiannis-Voules D, Biedermann P, Ekpo UF, Garba A, Langer E, Mathieu E, Midzi N, Mwinzi P,  
 490 Polderman AM, Raso G, Sacko M, Talla I, Tchuenté LT, Touré S, Winkler MS, Utzinger J, Vounatsou  
 491 P. 2015. Spatial and temporal distribution of soil-transmitted helminth infection in sub-Saharan Africa:  
 492 a systematic review and geostatistical meta-analysis. *The Lancet Infectious Diseases* **15**:74-84.  
 493 doi:https://doi.org/10.1016/S1473-3099(14)71004-7

494 Keiser J, Utzinger J. 2010. The Drugs We Have and the Drugs We Need Against Major Helminth  
 495 Infections. *Advances in Parasitology* **73**:197-230. doi:https://doi.org/10.1016/S0065-308X(10)73008-6

496 Keiser J, Utzinger J. 2005. Emerging Foodborne Trematodiasis. *Emerging Infectious Diseases* **11**:1507-  
 497 1514. doi:10.3201/eid1110.050614

498 Keiser, Jennifer. 2019. Highlighting Operational and Implementation Research for Control of  
 499 Helminthiasis. GB: Academic Press.

500 Khieu V, Furst T, Miyamoto K, Yong TS, Chai JY, Huy R, Muth S, Odermatt P. 2019. Is *Opisthorchis*  
501 *viverrini* Emerging in Cambodia? *Advances in Parasitology* **103**:31-73. doi:10.1016/bs.apar.2019.02.002

502 Lai Y, Biedermann P, Shrestha A, Chammartin F, À Porta N, Montresor A, Mistry NF, Utzinger J,  
503 Vounatsou P. 2019. Risk profiling of soil-transmitted helminth infection and estimated number of  
504 infected people in South Asia: A systematic review and Bayesian geostatistical Analysis. *PLOS*  
505 *Neglected Tropical Diseases* **13**:e7580. doi:10.1371/journal.pntd.0007580

506 Laoprom N, Laithavewat L, Kopolrat K, Kiatsopit N, Kaewkes S, Chantalux S, Mongkolsin C,  
507 Chanmaha B, Andrews RH, Petney TN, Sithithaworn P. 2016. Evaluation of a commercial stool  
508 concentrator kit compared to direct smear and formalin-ethyl acetate concentration methods for diagnosis  
509 of parasitic infection with special reference to *Opisthorchis viverrini* sensu lato in Thailand. *Southeast*  
510 *Asian Journal of Tropical Medicine and Public Health* **47**:890-900.

511 Lindgren F, Rue H, Lindström J, Kent JT, Diggle PJ, Illian JB, Simpson DP, Gneiting T, Scheuerer M,  
512 Furrer R, Furrer E, Nychka D, Fearnhead P, Challenor P, Andrianakis Y, Stephenson G, Møller J, Hu X,  
513 Simpson D, Bolin D, Brown PE, Cameletti M, Martino S, Cooley D, Hoeting JA, Crujeiras RM, Prieto  
514 A, Marco ARF, Fuglstad G, Gelman A, Guttorp P, Das B, Haaland B, Nott DJ, Haslett J, Joshi C, Garreta  
515 V, Höhle M, Ippoliti L, Martin RJ, Bhansali RJ, Jandhyala VK, Fotopoulos SB, Jun M, Kongsgård HW,  
516 Lasinio GJ, Pollice A, Lee C, Lee WT, Kaufman CG, Li B, Genton MG, Lindgren G, Mardia KV, Mateu  
517 J, Mondal D, Müller WG, Walld H, Ottavi A, Papaspiliopoulos O, Porcu E, Saez M, Schmidt AM, Stein  
518 A, Switzer P, Turkman K, Wikle CK, Hooten MB. 2011. An explicit link between Gaussian fields and  
519 Gaussian Markov random fields: the stochastic partial differential equation approach. *Journal of the*  
520 *Royal Statistical Society: Series B (Statistical Methodology)* **73**:423-498. doi:10.1111/j.1467-  
521 9868.2011.00777.x

522 Lovis L, Mak TK, Phongluxa K, Soukhathammavong P, Sayasone S, Akkhavong K, Odermatt P, Keiser  
523 J, Felger I. 2009. PCR Diagnosis of *Opisthorchis viverrini* and *Haplorchis taichui* Infections in a Lao  
524 Community in an Area of Endemicity and Comparison of Diagnostic Methods for Parasitological Field  
525 Surveys. *Journal of Clinical Microbiology* **47**:1517-1523. doi:10.1128/JCM.02011-08

526 Lu Y, Gonzales G, Chen S, Li H, Cai Y, Chu Y, Ai L, Chen M, Chen H, Chen J. 2017. Urgent needs in  
527 fostering neglected tropical diseases (NTDs) laboratory capacity in WHO Western Pacific Region:  
528 results from the external quality assessment on NTDs diagnosis in 2012-2015. *Infectious Diseases of*  
529 *Poverty* **6**:106-108. doi:10.1186/s40249-017-0319-x

530 Maipanich W, Waikagul J, Watthanakulpanich D, Muennoo C, Sanguankiat S. 2004. Intestinal Parasitic  
531 Infections among Inhabitants of the North, West-central and Eastern Border Areas of Thailand. *The*  
532 *Journal of Tropical Medicine and Parasitology* **27**:51-58.

533 McCreesh N, Booth M. 2013. Challenges in predicting the effects of climate change on *Schistosoma*  
534 *mansoni* and *Schistosoma haematobium* transmission potential. *Trends in Parasitology* **29**:548-555.  
535 doi:https://doi.org/10.1016/j.pt.2013.08.007

536 Miyamoto K, Kirinoki M, Matsuda H, Hayashi N, Chigusa Y, Sinuon M, Chuor CM, Kitikoon V. 2014.  
537 Field survey focused on *Opisthorchis viverrini* infection in five provinces of Cambodia. *Parasitology*  
538 *International* **63**:366-373. doi:10.1016/j.parint.2013.12.003

539 Moher D, Liberati A, Tetzlaff J, Altman DG. 2010. Preferred reporting items for systematic reviews and

540 meta-analyses: The PRISMA statement. *International Journal of Surgery* **8**:336-341.  
541 doi:10.1016/j.ijssu.2010.02.007

542 MOPH. 2014. National Survey on Helminthiasis in Thailand. Department of Disease Control, Ministry  
543 of Public Health, Bangkok, Thailand

544 Moraga P, Cramb SM, Mengersen KL, Pagano M. 2017. A geostatistical model for combined analysis  
545 of point-level and area-level data using INLA and SPDE. *Spatial Statistics* **21**:27-41.  
546 doi:10.1016/j.spasta.2017.04.006

547 Ogorodova LM, Fedorova OS, Sripa B, Mordvinov VA, Katokhin AV, Keiser J, Odermatt P, Brindley  
548 PJ, Mayboroda OA, Velavan TP, Freidin MB, Sazonov AE, Saltykova IV, Pakharukova MY, Kovshirina  
549 YV, Kaloulis K, Krylova OY, Yazdanbakhsh M. 2015. Opisthorchiasis: An Overlooked Danger. *PLOS*  
550 *Neglected Tropical Diseases* **9**:e3563. doi:10.1371/journal.pntd.0003563

551 Petney TN, Andrews RH, Saijuntha W, Wenz-Mücke A, Sithithaworn P. 2013. The zoonotic, fish-borne  
552 liver flukes *Clonorchis sinensis*, *Opisthorchis felinus* and *Opisthorchis viverrini*. *International Journal*  
553 *for Parasitology* **43**:1031-1046. doi:10.1016/j.ijpara.2013.07.007

554 Phimpraphai W, Tangkawattana S, Kasemsuwan S, Sripa B. 2018. Social Influence in Liver Fluke  
555 Transmission: Application of Social Network Analysis of Food Sharing in Thai Isaan Culture. *Advances*  
556 *in Parasitology* **101**:97-124. doi:10.1016/bs.apar.2018.05.004

557 Phimpraphai W, Tangkawattana S, Sereerak P, Kasemsuwan S, Sripa B. 2017. Social network analysis  
558 of food sharing among households in opisthorchiasis endemic villages of Lawa Lake, Thailand. *Acta*  
559 *Tropica* **169**:150-156. doi:10.1016/j.actatropica.2017.02.001

560 Prueksapanich P, Piyachaturawat P, Aumpansub P, Ridditid W, Chaiteerakij R, Rerknimitr R. 2018. Liver  
561 Fluke-Associated Biliary Tract Cancer. *Gut and Liver* **12**:236-245. doi:10.5009/gnl17102

562 Qian M, Zhou X. 2019. Human liver flukes in China and ASEAN: Time to fight together. *PLOS*  
563 *Neglected Tropical Diseases* **13**:e7214. doi:10.1371/journal.pntd.0007214

564 Rue H, Martino S, Chopin N. 2009. Approximate Bayesian inference for latent Gaussian models by using  
565 integrated nested Laplace approximations. *Journal of the Royal Statistical Society: Series B (Statistical*  
566 *Methodology)* **71**:319-392. doi:10.1111/j.1467-9868.2008.00700.x

567 Saijuntha W, Sithithaworn P, Kaitsopit N, Andrews RH, Petney TN. 2014. Liver flukes: *Clonorchis* and  
568 *Opisthorchis*. *Advances in Experimental Medicine and Biology* **766**:153-199. doi:10.1007/978-1-4939-  
569 0915-5\_6

570 Sanderson EW, Jaiteh M, Levy MA, Redford KH, Woolmer G. 2002. The Human Footprint and the Last  
571 of the Wild. *BioScience* **52**:891-904.

572 Sato M, Pongvongsa T, Sanguankiat S, Yoonuan T, Dekumyoy P, Kalambaheti T, Keomoungkhoun M,  
573 Phimmayoi I, Boupha B, Moji K, Waikagul J. 2010. Copro-DNA diagnosis of *Opisthorchis viverrini* and  
574 *Haplorchis taichui* infection in an endemic area of Lao PDR. *The Southeast Asian Journal of Tropical*  
575 *Medicine and Public Health* **41**:28.

576 Sayasone S, Utzinger J, Akkhavong K, Odermatt P. 2015. Repeated stool sampling and use of multiple  
577 techniques enhance the sensitivity of helminth diagnosis: A cross-sectional survey in southern Lao

578 People's Democratic Republic. *Acta Tropica* **141**:315-321. doi:10.1016/j.actatropica.2014.09.004

579 Sithithaworn P, Andrews RH, Van De N, Wongsaroj T, Sinuon M, Odermatt P, Nawa Y, Liang S,  
580 Brindley PJ, Sripa B. 2012. The current status of opisthorchiasis and clonorchiasis in the Mekong Basin.  
581 *Parasitology International* **61**:10-16. doi:10.1016/j.parint.2011.08.014

582 Smith BJ, Yan J, Cowles MK. 2008. Unified Geostatistical Modeling for Data Fusion and Spatial  
583 Heteroskedasticity with R Package ramps. *Journal of Statistical Software* **25**. doi:10.18637/jss.v025.i10

584 Sohn W. 2011. Adult *Opisthorchis viverrini* Flukes in Humans, Takeo, Cambodia. *Emerging Infectious  
585 Diseases* **17**:1302-1304. doi:10.3201/eid1707.102071

586 Sohn W, Jung B, Hong S, Lee K, Park J, Kim H, Cho S, Htoon TT, Tin HH, Chai J. 2019. Low-Grade  
587 Endemicity of Opisthorchiasis, Yangon, Myanmar. *Emerging Infectious Diseases* **25**:1435-1437.  
588 doi:10.3201/eid2507.190495

589 Sripa B, Kaewkes S, Intapan PM, Maleewong W, Brindley PJ. 2010. Food-Borne Trematodiasis in  
590 Southeast Asia: Epidemiology, Pathology, Clinical Manifestation and Control. *Advances in Parasitology*  
591 **72**:305-350. doi:10.1016/S0065-308X(10)72011-X

592 Sripa B, Tangkawattana S, Laha T, Kaewkes S, Mallory FF, Smith JF, Wilcox BA. 2015. Toward  
593 integrated opisthorchiasis control in northeast Thailand: The Lawa project. *Acta Tropica* **141**:361-367.  
594 doi:10.1016/j.actatropica.2014.07.017

595 Stevens GA, Alkema L, Black RE, Boerma JT, Collins GS, Ezzati M, Grove JT, Hogan DR, Hogan MC,  
596 Horton R, Lawn JE, Marušić A, Mathers CD, Murray CJL, Rudan I, Salomon JA, Simpson PJ, Vos T,  
597 Welch V. 2016. Guidelines for Accurate and Transparent Health Estimates Reporting: the GATHER  
598 statement. *PLOS Medicine* **13**:e1002116. doi:10.1371/journal.pmed.1002056

599 Suwannatrai A, Pratumchart K, Suwannatrai K, Thinkhamrop K, Chaiyos J, Kim CS,  
600 Suwanweerakamtorn R, Boonmars T, Wongsaroj T, Sripa B. 2017. Modeling impacts of climate change  
601 on the potential distribution of the carcinogenic liver fluke, *Opisthorchis viverrini*, in Thailand.  
602 *Parasitology Research* **116**:243-250. doi:10.1007/s00436-016-5285-x

603 Suwannatrai A, Saichua P, Haswell M. 2018. Epidemiology of *Opisthorchis viverrini* Infection.  
604 *Advances in Parasitology* **101**:41-67. doi:10.1016/bs.apar.2018.05.002

605 UN. 2015. Transforming our world: the 2030 Agenda for Sustainable Development. United Nations, New  
606 York, NY, USA

607 Utazi CE, Thorley J, Alegana VA, Ferrari MJ, Nilsen K, Takahashi S, Metcalf C, Lessler J, Tatem AJ.  
608 2019. A spatial regression model for the disaggregation of areal unit based data to high-resolution grids  
609 with application to vaccination coverage mapping. *Statistical Methods in Medical Research* **28**:3226-  
610 3241. doi:10.1177/0962280218797362

611 Van De N. 2004. Fish-borne trematodes in Vietnam. *Southeast Asian Journal of Tropical Medi  
612 cine and Public Health* **35**:299-301. URL: <https://pdfs.semanticscholar.org/4952/fe365526c6cf9bb2e81571d151450d18ef0f.pdf>  
613 e81571d151450d18ef0f.pdf

614 Watson J. 2020. A fast Monte Carlo test for preferential sampling. Cornell University.  
615 URL:<https://arxiv.org/abs/2003.01319v2> [Preprint]

616 WHO. 2012. Accelerating work to overcome the global impact of neglected tropical diseases. World  
617 Health Organization, Geneva

618 WHO. 2002. Joint WHO/FAO Workshop on Foodborne Trematode Infections in Asia. World Health  
619 Organization, Geneva

620 WHO. 2009. Report of the WHO Expert Consultation on Foodborne Trematode Infections and  
621 Taeniasis/Cysticercosis. World Health Organization, Geneva

622 Wijit A, Morakote N, Klinchid J. 2013. High Prevalence of Haplorchiasis in Nan and Lampang Provinces,  
623 Thailand, Proven by Adult Worm Recovery from Suspected Opisthorchiasis Cases. *The Korean Journal*  
624 *of Parasitology* **51**:767-769. doi:10.3347/kjp.2013.51.6.767

625 Wongsaroj T, Nithikathkul C, Rojkitikul W, Nakai W, Royal L, Rammasut P. 2014. National survey of  
626 helminthiasis in Thailand. *Asian Biomedicine* **8**:779-783. doi:10.5372/1905-7415.0806.357

627 Yong T, Chai J, Sohn W, Eom KS, Jeoung H, Hoang E, Yoon C, Jung B, Lee S, Sinuon M, Socheat D.  
628 2014. Prevalence of Intestinal Helminths among Inhabitants of Cambodia (2006-2011). *The Korean*  
629 *Journal of Parasitology* **52**:661-666. doi:10.3347/kjp.2014.52.6.661

630 Ziegler AD, Andrews RH, Grundy-Warr C, Sithithaworn P, Petney TN. 2011. Fighting Liverflukes with  
631 Food Safety Education. *Science* **331**:282-283. doi:10.1126/science.331.6015.282-b

632