

1 **TITLE:** Assessment of Early Mitigation Measures Against COVID-19 in Puerto Rico:
2 March 15-May 15, 2020

3

4 **AUTHORS:**

5 Miguel Valencia, MD. Director, Data Management Operations for COVID-19 Legacy
6 Systems, Puerto Rico Department of Health, San Juan, PR.

7 José E. Becerra. MD, MPH.* Adjunct Associate Professor, Graduate School of Public
8 Health, University of Puerto Rico Medical Sciences Campus, San Juan, PR.

9 Juan C. Reyes, EdD, MS. Professor and Director, Department of Biostatistics and
10 Epidemiology, Graduate School of Public Health, University of Puerto Rico Medical
11 Sciences Campus, San Juan, PR.

12 Kenneth G. Castro, MD. Professor, Hubert Department of Global Health & Department
13 of Epidemiology, Rollins School of Public Health, Division of Infectious Diseases,
14 Department of Medicine, School of Medicine, Emory University, Atlanta, GA.

15

16 *Corresponding author

17

18

19

20

21 **ABSTRACT**

22 **Background:** On March 15, 2020 Puerto Rico implemented non-pharmaceutical
23 interventions (NPIs), including a mandatory curfew, as part of a state of emergency
24 declaration to mitigate the community transmission of the SARS-CoV-2 virus. The strict
25 enforcement of this curfew was extended through May 25, with a gradual relaxation
26 beginning on May 1. This report summarizes an assessment of these early mitigation
27 measures on the progression of COVID-19 in the island.

28 **Methods and Findings:** From March 15 to May 15, 2020, 41,748 results of molecular
29 (RT-PCR) tests were reported to the Puerto Rico Department of Health. Of these, 1,866
30 (4.5%) were positive, corresponding to 1,219 individuals with COVID-19 included in the
31 study. We derived the epidemic growth rates (r) and the corresponding reproductive
32 numbers (R) from the epidemic curve of these 1,219 individuals with laboratory-
33 confirmed diagnosis of COVID-19 using their date of test collection as a proxy for
34 symptoms onset. We then compared the observed cases with the R -based epidemic
35 model projections had the mitigation measures not been implemented. Computations
36 were conducted in the R packages `forecast`, `incidence` and `projections`.

37 The number of daily RT-PCR-confirmed cases peaked on March 30 (84 cases),
38 showing a weekly cyclical trend, with lower counts on weekends and a decreasing
39 secular trend since March 30. The initial exponential growth rate (r) was 17.0% (95% CI:
40 8.4%, 25.6%), corresponding to a doubling of cases every 4.1 days, and to a
41 reproduction number (R_0) of 1.89 (95% CI: 1.41, 2.39). After March 30, the r value

42 reverted to an exponential decay rate (negative) of -3.6% (95% CI: -5.7%, -1.4%),
43 corresponding to a halving of cases every 19.4 days and to an Ro of 0.90 (95% CI:
44 0.84, 0.97). Had the initial growth rate been maintained, a total of 18,699 (96%CI:
45 4,113, 87,438) COVID-19 cases would have occurred by April 30 compared with 1,119
46 observed.

47 **Conclusions:** Our findings are consistent with very effective implementation of early
48 non-pharmaceutical interventions (NPIs) as mitigation measures in Puerto Rico. These
49 results serve as a baseline to assess the impact of the transition from mitigation to
50 containment stages in Puerto Rico.

51

52

53 **MANUSCRIPT**

54 **Introduction**

55 A novel coronavirus designated SARS-CoV-2 has been associated with coronavirus
56 disease 2019 (COVID-19). The disease spectrum ranges from asymptomatic infections,
57 mild-to-moderate influenza-like illness, pneumonia, severe acute respiratory distress,
58 hyperinflammatory state, coagulopathy, to death.^{1,2,3} First described in late 2019 in
59 China, this novel virus rapidly spread for person-to-person and cases were identified in
60 other provinces and 19 additional countries. By January 30, 2020, the World Health
61 Organization (WHO) declared the COVID-19 outbreak a global health emergency.⁴ With
62 the rapid spread of this condition to a total of 113 countries, WHO Director General
63 declared a global pandemic on 11 March 2020.⁵

64 In the absence of safe and effective vaccine or other therapeutic modalities against
65 SARS-CoV-2, early measures in China included the implementation of non-
66 pharmaceutical interventions (NPIs) aimed at temporizing the spread, illness, and
67 deaths due to COVID-19.⁶ Similar interventions have been implemented in other
68 countries; NPIs had previously been successfully used to mitigate the 1918-1919
69 influenza pandemic.⁷ In the United States and Territories, the President and Governors
70 declared health emergencies to implement NPIs, including orders to stay at home,
71 travel restrictions, and closure of nonessential businesses.⁸

72 On March 13, 2020 the first confirmed COVID-19 cases were identified in Puerto Rico.⁹
73 These were two tourists from Italy (ages 68 and 70), and a 71-year-old Puerto Rican
74 with lymphoma and diabetes, whose relatives had recently traveled to Chicago, Illinois.

75 Within the past 30 months Puerto Rico had experienced several major natural disasters,
76 including hurricanes Irma and Maria in September 2017 with widespread interruption of
77 the infrastructure for essential services. By late December 2019 and January 2020, the
78 island experienced significant earth tremors and multiple aftershocks with extensive
79 structural damage and housing instability in the Southwest, associated with limited
80 health care access among vulnerable populations.^{10,11,12} Against this backdrop, on
81 March 15, 2020, the Governor of Puerto Rico issued an island-wide mandatory curfew
82 as part of a state of emergency declaration closing public and private schools and
83 universities, all nonessential businesses and public agencies. By then, five COVID-19
84 cases had been confirmed. The curfew, and its strict enforcement, were extended
85 through May 25, with a gradual relaxation beginning on May 1.

86

87 **Methods**

88 Using FDA-approved laboratory tests under Emergency Use Authority (EUA), all
89 molecular tests by real-time polymerase chain reactions (RT-PCR) were conducted in
90 approximately 900 laboratories throughout the island from March 15 through May 15,
91 2020 and reported to the Puerto Rico Department of Health. All positive RT-PCR test
92 results were de-duplicated to account for individuals who had more than one clinical
93 specimen submitted for testing, and to accurately derive the number of individual
94 COVID-19 cases over time (by date of sample collection). Using the epidemic curve, we
95 compared the pre- and post- estimates of the epidemic growth rate (r) and its
96 corresponding reproductive number (R_0) by March 30, two weeks after the mandatory
97 curfew was implemented. Deaths were included for analysis through May 22 to account

98 for the censoring effect in the registration of recent deaths. Results of a comprehensive
99 retrospective cohort study of close contacts in Shenzhen, China, were used to impute
100 the serial interval distribution (mean=6.3 days, SD=4.2).¹³ Computations were
101 conducted in the R packages forecast, incidence and projections.¹⁴

102

103 **Results**

104 Among residents of Puerto Rico, a total of 46,093 results of molecular (RT-PCR) tests
105 were reported to the Puerto Rico Department of Health between March 15 and May 15.
106 Of these, 1,991 (4.3%) were positive, corresponding to 1,256 individuals with COVID-
107 19. Demographically, 50.5% were male with a mean age of 45.9, and 49.5% female
108 with a mean age of 45.5.

109 The number of daily RT-PCR confirmed cases peaked on March 30 (84 cases),
110 showing a weekly cyclical trend, with lower counts on weekends and a decreasing
111 secular trend since March 30 (Figure 1). The initial exponential growth rate (r) was
112 17.0% (95% CI: 8.4%, 25.6%), corresponding to a doubling of cases every 4.1 days,
113 and to a reproduction number (R_0) of 1.89 (95% CI: 1.41, 2.39).

114 After March 30, the r value reverted to an exponential decay rate (negative) of -3.6%
115 (95% CI: -5.7%, -1.4%), corresponding to a halving of cases every 19.4 days and to an
116 R_0 of 0.90 (95% CI: 0.84, 0.97). Had the initial exponential growth rate been
117 maintained, a total of 18,699 (96%CI: 4,113, 87,438) COVID-19 cases would have
118 occurred by April 30 compared with 1,119 observed (Figure 2). A more conservative
119 forecast using the linear growth rate from a seasonally adjusted Auto Regressive

120 Integrated Moving Average (ARIMA) model (0,1,0) shows that 6,294 (95%CI: 5,575;
121 7,013) cases would have occurred in the same period.

122 Throughout the observation period, the total number of RT-PCR tests per day fluctuated
123 but trended to a lower proportion of positive results (from 16.2% in the first two weeks to
124 1.7% in the last two weeks of the study period).

125 A total of 132 COVID-19 deaths were reported from March 15 through May 22, 2020. Of
126 these, 115 (87.1%) had RT-PCT test performed, 55 (41.7%) were laboratory confirmed
127 and 77 (58.3%) had COVID-19 as a probable cause of death; 56.7% were male with a
128 median age of 70.5, and 43.3% were female with a median age of 78.0.

129 The daily COVID-19 deaths peaked on April 13, 2020 (6 deaths). As illustrated in
130 Figure 3, the initial exponential growth rate (r) of COVID-19 deaths was 5.9% (95% CI:
131 3.2%, 8.6%), corresponding to a doubling of deaths every 11.8 days. After April 13, the r
132 value reverted to an exponential decay rate (negative) of -2.7% (95%CI: -4.3%, -1.3%),
133 corresponding to a halving of cases every 25.0 days. An estimated additional 510
134 (95%CI: 130, 890) COVID-19 deaths would had occurred by May 22 if the initial
135 exponential growth of 5.9% had not been curbed.

136

137 **Discussion**

138 Our findings are consistent with the use of NPIs as very effective early COVID-19
139 mitigation measures in Puerto Rico. It is likely that detection of COVID-19 cases
140 remains under ascertained on the island, as suggested by the relatively high crude
141 estimate of the case fatality rate of about 10%. However, this under ascertainment

142 should not alter the estimates obtained from the epidemic curve provided the case
143 ascertainment remained relatively constant throughout the study period. The decreasing
144 trend in the proportion of RT-PCR positive tests lend support to this assumption.

145 The mortality curve is consistent with a 2-week delay relative to the epidemic curve of
146 the COVID-19 cases, as well as with hospital data reported elsewhere,⁹ confirming our
147 findings about the effectiveness of the mitigation efforts. COVID-19 mortality may also
148 be under ascertained in Puerto Rico.

149 These results show benefits associated with the early implementation of NPIs for
150 COVID-19, with stay-at home orders, accompanied by mandated curfew and closure of
151 non-essential services in a manner consistent with historical reports of benefits
152 observed with similar use of NPIS in various U.S. cities during the 1918-1919 influenza
153 pandemic⁷ For sustained benefit, robust ongoing surveillance system will help identify
154 incidence changes to inform policy decisions. In addition, these data serve as a
155 baseline to assess the impact of the transition from mitigation to containment stages in
156 Puerto Rico. We recommend that RT-PCT testing capacity remain available for all
157 symptomatic individuals in Puerto Rico, as well as for all essential workers, and that the
158 public health infrastructure for case investigation and contact tracing, accompanied by
159 targeted isolation and quarantine, continue to be strengthened and scaled up to
160 safeguard the gains observed to date.

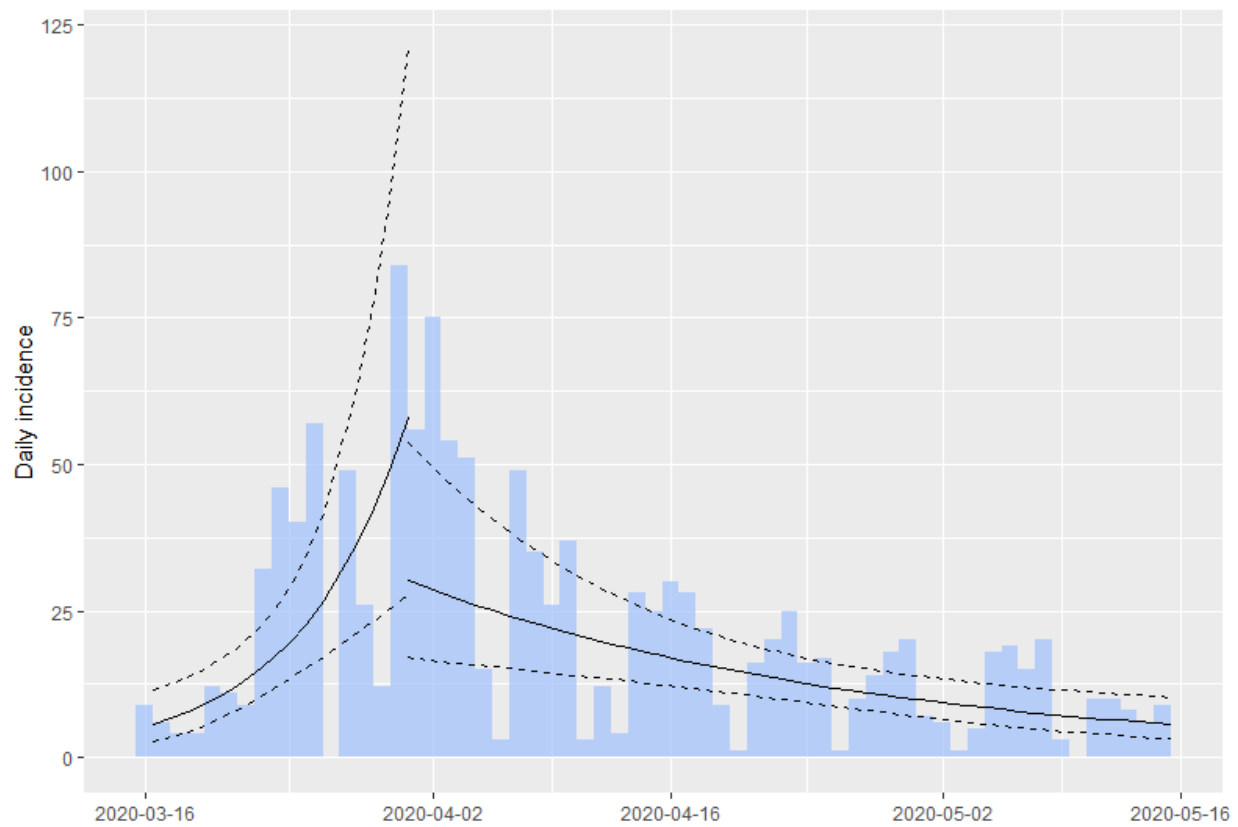
161

162 **FIGURES**

163

164 **Figure 1.** Daily incidence of COVID-19 cases (histograms), March 15–May 15, and
165 epidemic curve showing pre and post March 30, 2020 exponential growth fits (with 95%
166 CI)

167



168

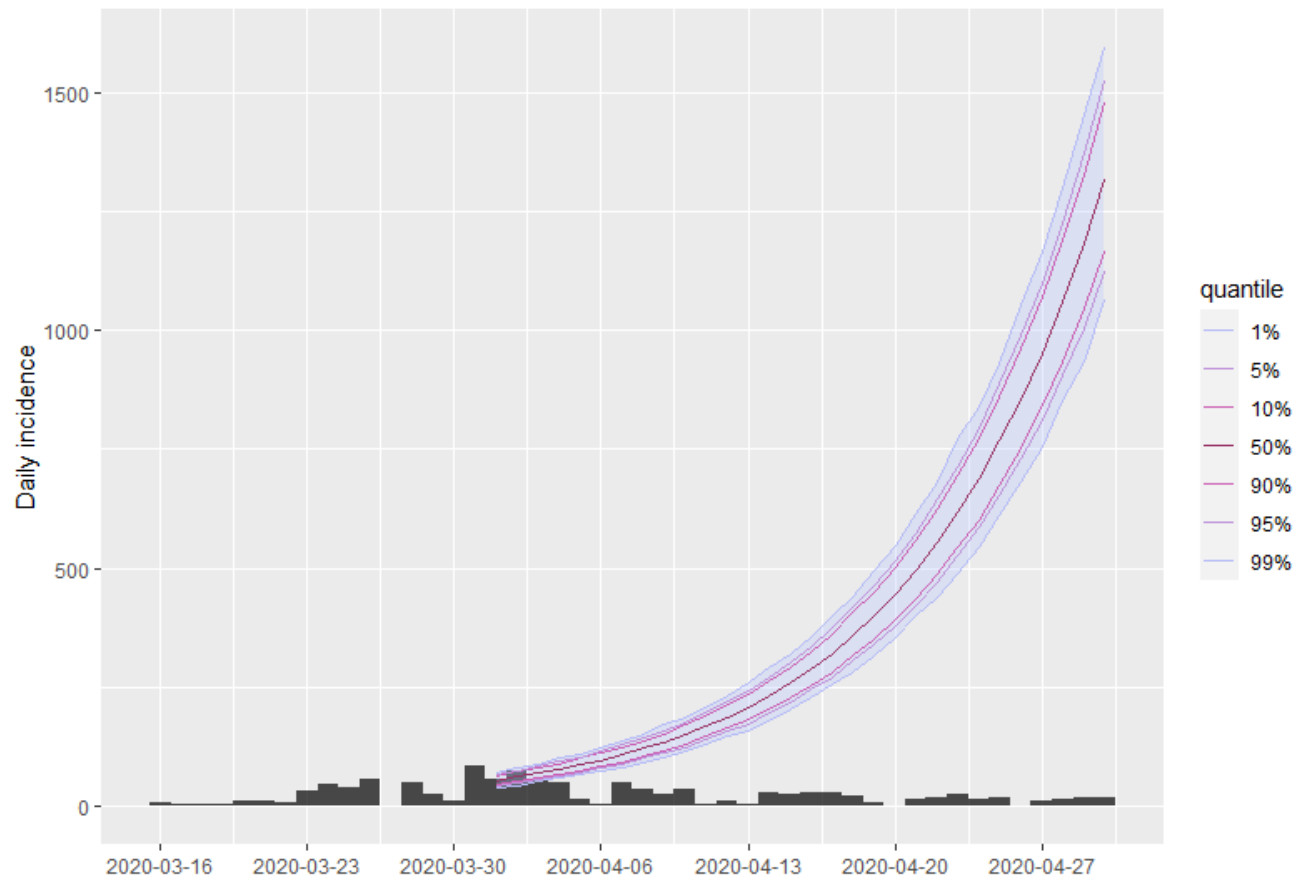
169

170

171 **Figure 2.** Projected daily incidence of COVID-19 cases through April 30, 2020

172

173



174

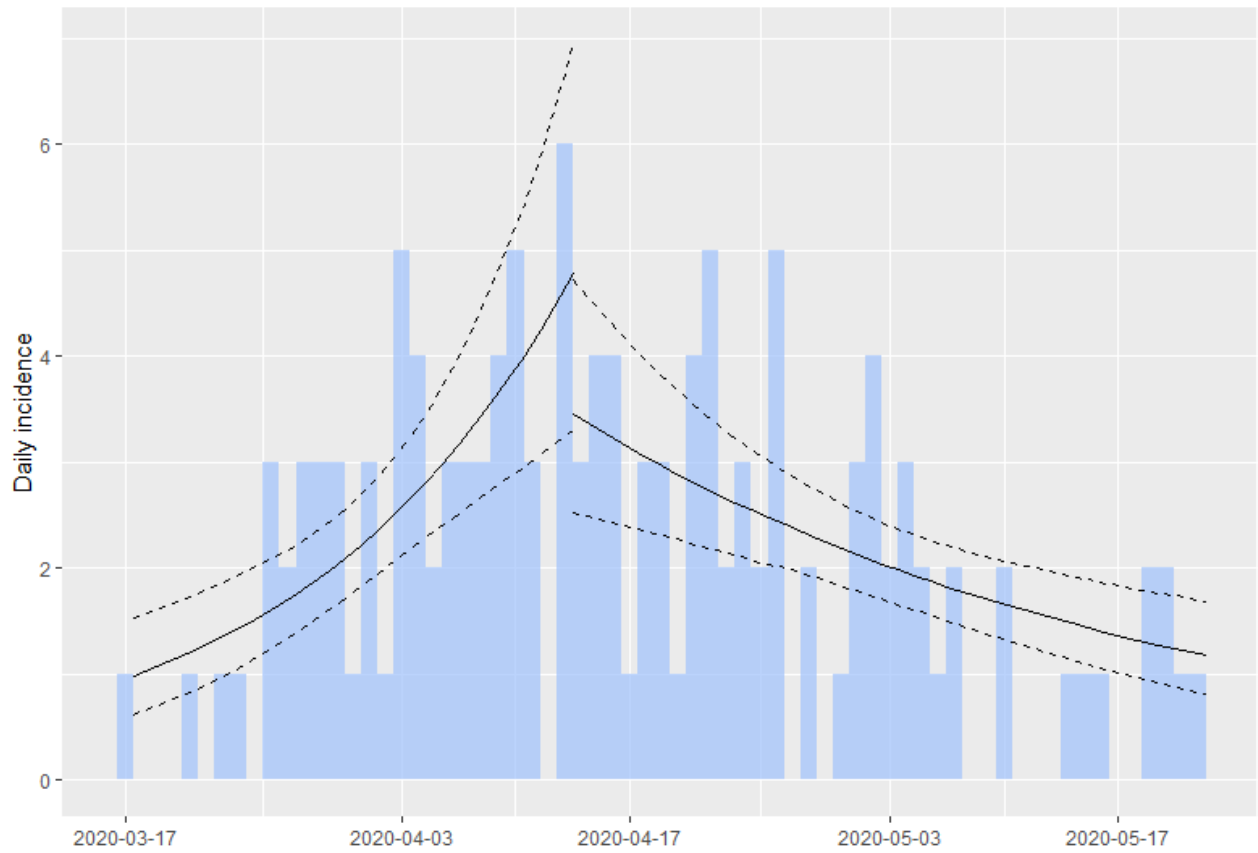
175

176

177 **Figure 3.** Daily COVID-19 deaths, March 15–May 22, and epidemic curve of 127

178 COVID-19 deaths from March 17 to May 22, 2020

179



180
181

182 **REFERENCES**

-
- ¹ Zhu N, Zhang D, Wang W, et al. A novel coronavirus from patients with pneumonia in China, 2019. *N Engl J Med* 2020;382:727-733. doi: 10.1056/NEJMoa2001017
- ² Omer SB, Malani P, del Rio C. The COVID-19 Pandemic in the US: A Clinical Update. *JAMA*. 2020;323(18):1767–1768. doi:10.1001/jama.2020.5788
- ³ Ackermann M, Verleden SE, Kuehnel M, et al. Pulmonary vascular endothelialitis, thrombosis, and angiogenesis in Covid-19. *N Engl J Med*. doi: 10.1056/NEJMoa2015432
- ⁴ WHO. Novel coronavirus (2019-nCoV). Situation Report -11, 31 January 2020. Available at https://www.who.int/docs/default-source/coronaviruse/situation-reports/20200131-sitrep-11-ncov.pdf?sfvrsn=de7c0f7_4
- ⁵ WHO Director-General's opening remarks at the media briefing on COVID-19 - 11 March 2020. Available at: <https://www.who.int/dg/speeches/detail/who-director-general-s-opening-remarks-at-the-media-briefing-on-covid-19---11-march-2020>
- ⁶ Pan A, Liu L, Wang C, et al. Association of public health interventions with the epidemiology of the COVID-19 outbreak in Wuhan, China. *JAMA*. Published online April 10, 2020. doi:10.1001/jama.2020.6130
- ⁷ Markel H, Lipman HB, Navarro JA, et al. Nonpharmaceutical interventions implemented by US cities during the 1918-1919 influenza pandemic. *JAMA*. 2007;298(6):644-654. doi:10.1001/jama.298.6.644

⁸ Gostin LO, Wiley LF. Governmental Public Health Powers During the COVID-19 Pandemic Stay-at-home Orders, Business Closures, and Travel Restrictions. *JAMA* 2020. Published online April 2, 2020. doi:10.1001/jama.2020.5460 (Available at <https://jamanetwork.com/journals/jama/fullarticle/2764283>)

⁹ Puerto Rico Department of Health. Puerto Rico COVID-19. Available at: <https://bioseguridad.maps.arcgis.com/apps/opstdashboard/index.html#/d7308c1abb4747e584329adf1215125e>. Accessed May 31, 2020

¹⁰ Hedges JR, Soliman KFA, D'Amour G, et al. Academic Response to Storm-Related Natural Disasters-Lessons Learned. *Int J Environ Res Public Health* 2018;15:E1768

¹¹ Santos-Burgoa C, Sandberg J, Suárez E, et al. Differential and persistent risk of excess mortality from Hurricane Maria in Puerto Rico: A time-series analysis. *Lancet Planet Health* 2018;2:e478-88 Available at: [https://doi.org/10.1016/S2542-5196\(18\)30209-2](https://doi.org/10.1016/S2542-5196(18)30209-2) Accessed June 1, 2020

¹² Irvin-Barnwell EA, Cruz M, Maniglier-Poulet C, et al. Evaluating Disaster Damages and Operational Status of Health-Care Facilities During the Emergency Response Phase of Hurricane Maria in Puerto Rico. *Disaster Med Public Health Prep* 2020;14:80-88.

¹³ Bi Q, Wu Y, Mei S, et al. Epidemiology and transmission of COVID-19 in 391 cases and 1286 of their close contacts in Shenzhen, China: a retrospective cohort study. *Lancet Infect Dis* 2020. Published Online April 27, 2020. [https://doi.org/10.1016/S1473-3099\(20\)30287-5](https://doi.org/10.1016/S1473-3099(20)30287-5) (Available at [https://www.thelancet.com/journals/laninf/article/PIIS1473-3099\(20\)30287-5/fulltext](https://www.thelancet.com/journals/laninf/article/PIIS1473-3099(20)30287-5/fulltext))

¹⁴ R epidemics consortium (Available at:

<https://www.repidemicsconsortium.org/projects/>) Accessed May 25, 2020.