

## 1 **Child wasting and concurrent stunting in low- and middle-income countries**

2 Andrew Mertens,<sup>1\*</sup> Jade Benjamin-Chung,<sup>2</sup> John M Colford Jr,<sup>1</sup> Alan E Hubbard,<sup>1</sup> Mark J van der Laan,<sup>1</sup>  
3 Jeremy Coyle<sup>1</sup>, Oleg Sofrygin,<sup>1</sup> Wilson Cai,<sup>1</sup> Wendy Jilek,<sup>1</sup> Sonali Rosete,<sup>1</sup> Anna Nguyen,<sup>1</sup> Nolan N  
4 Pokpongkiat,<sup>1</sup> Stephanie Djajadi,<sup>1</sup> Anmol Seth,<sup>1</sup> Esther Jung,<sup>1</sup> Esther O Chung,<sup>1</sup> Ivana Malenica,<sup>1</sup> Nima  
5 Hejazi,<sup>1</sup> Haodong Li,<sup>1</sup> Ryan Hafen,<sup>3</sup> Vishak Subramoney,<sup>4</sup> Jonas Häggström,<sup>5</sup> Thea Norman,<sup>6</sup> Parul  
6 Christian,<sup>7</sup> Kenneth H Brown,<sup>8</sup> Benjamin F. Arnold,<sup>9,10\*</sup> and members of the *ki* Child Growth  
7 Consortium\*\*

8  
9 <sup>1</sup> Division of Epidemiology & Biostatistics, University of California, Berkeley, 2121 Berkeley Way Rm 5302  
10 Berkeley, CA 94720-7360

11 <sup>2</sup> Department of Epidemiology & Population Health, Stanford University, Stanford University, 259  
12 Campus Drive, HRP Redwood Building T152A, Stanford, CA 94305

13 <sup>3</sup> Hafen Consulting, LLC, West Richland WA, 99353

14 <sup>4</sup> DVPL Tech

15 <sup>5</sup> Cytec Inc, 1050 Winter St Suite 2700 Waltham, MA 02451, USA

16 <sup>6</sup> Quantitative Sciences, Bill & Melinda Gates Foundation, 500 5th Ave N, Seattle, WA 98109

17 <sup>7</sup> Center for Human Nutrition, Department of International Health, Johns Hopkins Bloomberg School of  
18 Public Health, Baltimore, MD 21205.

19 <sup>8</sup> Department of Nutrition, University of California, Davis, 3135 Meyer Hall, Davis, CA 95616-5270

20 <sup>9</sup> Francis I. Proctor Foundation, University of California, San Francisco, 95 Kirkham St, San Francisco, CA  
21 94143

22 <sup>10</sup> Department of Ophthalmology, University of California, San Francisco, 10 Koret Way, San Francisco,  
23 CA 94143

24

25 \* Corresponding authors are Andrew Mertens ([amertens@berkeley.edu](mailto:amertens@berkeley.edu)) and Benjamin F. Arnold  
26 ([ben.arnold@ucsf.edu](mailto:ben.arnold@ucsf.edu)).

27 \*\* Members of the *ki* Child Growth Consortium

28 1. Tahmeed Ahmed, International Centre for Diarrhoeal Disease Research, Dhaka, Bangladesh

29 2. Asad Ali, Aga Khan University, Pakistan, Karachi, Pakistan

30 3. France Bégin, UNICEF, New York, USA

31 4. Mauricio L. Barreto, Center of Data and Knowledge Integration for Health, Fundação Oswaldo  
32 Cruz, Salvador, Brazil.

33 5. Pascal Obong Bessong, HIV/AIDS & Global Health Research Programme, University of Venda,  
34 Thohoyandou, South Africa

35 6. Zulfiqar A. Bhutta, Institute for Global Health & Development & Center of Excellence in Women  
36 and Child Health, The Aga Khan University South-Central Asia, East Africa & United Kingdom

37 7. Robert E. Black, Johns Hopkins University, Bloomberg School of Public Health, Baltimore, USA

38 8. Ladaporn Bodhidatta, Armed Forces Research Institute of Medical Sciences, Bangkok, Thailand

39 9. William Checkley, Johns Hopkins University, School of Medicine, Baltimore, USA

40 10. Jean E. Crabtree, Leeds Institute for Medical Research, St. James's University Hospital, University  
41 of Leeds, Leeds, United Kingdom

42 11. Rina Das, International Centre for Diarrhoeal Disease Research, Dhaka, Bangladesh

43 12. Subhasish Das, International Centre for Diarrhoeal Disease Research, Dhaka, Bangladesh

- 44 13. Christopher P. Duggan, Center for Nutrition, Boston Children’s Hospital, USA  
45 14. Abu Syed Golam Faruque, International Centre for Diarrhoeal Disease Research, Dhaka,  
46 Bangladesh  
47 15. Wafaie W. Fawzi, Department of Global Health and Population, Harvard TH Chan School of  
48 Public Health, Cambridge, USA  
49 16. José Quirino da Silva Filho, Federal University of Ceará, Fortaleza, Brazil  
50 17. Robert H. Gilman, Johns Hopkins University, Bloomberg School of Public Health, Baltimore, USA  
51 18. Richard L. Guerrant, University of Virginia, Charlottesville, USA  
52 19. Rashidul Haque, International Centre for Diarrhoeal Disease Research, Dhaka, Bangladesh  
53 20. Eric R. Houpt, University of Virginia, Charlottesville, USA  
54 21. Najeeha Talat Iqbal, Department of Pediatrics and Child Health, Aga Khan University, Karachi,  
55 Pakistan  
56 22. Jacob John, Christian Medical College, Vellore, India  
57 23. Sushil Matthew John, Professor, Low Cost Effective Care Unit, Christian Medical College, Vellore,  
58 India  
59 24. Gagandeep Kang, Translational Health Science and Technology Institute, Pali, India  
60 25. Margaret Kosek, University of Virginia, Charlottesville, USA  
61 26. Aldo Ângelo Moreira Lima, Federal University of Ceará, Fortaleza, Brazil  
62 27. Tjale Cloupas Mahopo, Department of Nutrition, School of Health Sciences, University of Venda,  
63 Thohoyandou, South Africa  
64 28. Dharma S. Manandhar, Mother and Infant Research Activities (MIRA), Kathmandu, Nepal  
65 29. Karim P. Manji, Department of Pediatrics and Child Health, Muhimbili University School of  
66 Health and Allied Sciences, Dar es Salaam, Tanzania  
67 30. Estomih Mduma, Haydom Lutheran Hospital, Haydom, Tanzania  
68 31. Venkata Raghava Mohan, Professor, Community Medicine, Christian Medical College, Vellore,  
69 India  
70 32. Sophie E. Moore, Department of Women and Children’s Health, Kings College London, UK &  
71 MRC Unit The Gambia at London School of Hygiene and Tropical Medicine, The Gambia  
72 33. Mzwakhe Emanuel Nyathi, Department of Animal Services, School of Agriculture, University of  
73 Venda, Thohoyandou, South Africa  
74 34. Maribel Paredes Olortegui, AB PRISMA, Iquitos, Peru  
75 35. William A. Petri, University of Virginia, Charlottesville, USA  
76 36. Prasanna Samuel Premkumar, Christian Medical College, Vellore, India  
77 37. Andrew M. Prentice, MRC Unit The Gambia at London School of Hygiene and Tropical Medicine,  
78 The Gambia  
79 38. Najeeb Rahman, Aga Khan University, Karachi, Pakistan  
80 39. Kamran Sadiq, Aga Khan University, Karachi, Pakistan  
81 40. Rajiv Sarkar, Christian Medical College, Vellore, Tamil Nadu, India  
82 41. Naomi M. Saville, Institute for Global Health University of College London  
83 42. Bhim P. Shrestha, Health Research and Development Forum, Kathmandu, Nepal  
84 43. Sanjaya Kumar Shrestha, Walter Reed/AFRIMS Research Unit, University of Bergen Soares,

85 Federal University of Ceará, Fortaleza, Brazil

86 44. Alberto Melo Soares, Federal University of Ceará, Fortaleza, Brazil

87 45. Bakary Sonko, MRC Unit The Gambia at London School of Hygiene and Tropical Medicine,  
88 London, The Gambia

89 46. Erling Svensen, Haukeland University Hospital, Bergen, Norway

90 47. Sana Syed, Department of Pediatrics, Division of Gastroenterology, Hepatology & Nutrition  
91 University of Virginia School of Medicine, Charlottesville, USA, and Aga Khan University

92 48. Fayaz Umrani, Aga Khan University, Karachi, Pakistan

93 49. Honorine D. Ward, Tufts Medical Center, Tufts University School of Medicine, Boston, USA

94 50. Pablo Penataro Yori, University of Virginia, Charlottesville, USA

95

96

97 Abstract limit ~200 words; current count 219

98 Main text limit ~3000 words; current count 2869

99

## 100 **Summary**

101 **Sustainable Development Goal 2.2, to end malnutrition by 2030, includes elimination of child wasting,**  
102 **defined as weight-for-length more than 2 standard deviations below international standards.**  
103 **Prevailing methods to measure wasting rely on cross-sectional surveys that cannot measure onset,**  
104 **recovery, and persistence — key features that inform preventive interventions and disease burden**  
105 **estimates. We analyzed 21 longitudinal cohorts to show wasting is a highly dynamic process of onset**  
106 **and recovery, with incidence peaking between birth and 3 months. By age 24 months 29.2% of**  
107 **children had experienced at least one wasting episode, more than 5-fold higher than point prevalence**  
108 **(5.6%), demonstrating that wasting affects far more children than can be inferred through cross-**  
109 **sectional surveys. Children wasted before 6 months had faster recovery and shorter episodes than**  
110 **children wasted at older ages, but early wasting increased the risk of later growth faltering, including**  
111 **concurrent wasting and stunting (low height-for-age), increasing their risk of mortality. In diverse**  
112 **populations with high seasonal rainfall, population average weight-for-length varied substantially**  
113 **(>0.5 z in some cohorts), with the lowest mean Z-scores during the rainiest months, creating potential**  
114 **for seasonally targeted interventions. Our results elevate the importance of establishing interventions**  
115 **to prevent wasting from birth to age 6 months, likely through improved maternal nutrition, to**  
116 **complement current programs that focus on children ages 6-59 months.**

117

118

## 119 **Introduction**

120 Wasting is a form of undernutrition that results from a loss of muscle and fat tissue from acute  
121 malnutrition, affecting an estimated 45.4 million children under 5 years (6.7%) worldwide with over half  
122 living in South Asia.<sup>1</sup> Children are considered wasted if their weight-for-length z-score (WLZ) falls 2  
123 standard deviations below the median of international standards, and severe wasting is 3 standard  
124 deviations below the median.<sup>2</sup> Wasted children have weakened immune systems,<sup>3</sup> predisposing them  
125 to infections and more severe illness once infected.<sup>4</sup> Wasting in very young children increases their risk  
126 of mortality (relative risk: 2.3), with mortality risk further increasing if they are also stunted and  
127 underweight, defined as length-for-age (LAZ) below -2 and weight-for-age (WAZ) below -2 (relative risk:

128 12.3).<sup>5</sup> Longitudinal studies have shown that wasting is also associated with higher risk of stunting<sup>6</sup> and  
129 poor neurocognitive development at older ages.<sup>7,8</sup> Community-based identification and management of  
130 severely wasted children (WLZ below  $-3$ ), including treatment with high calorie, ready-to-use-  
131 therapeutic foods (RUTF) has proven effective,<sup>9</sup> but rates of relapse and mortality remain high in this  
132 fragile subgroup.<sup>10,11</sup> Primary prevention of wasting would be preferable to treatment, but there are  
133 scant proven preventive interventions, especially in infants under 6 months. Nutritional intervention  
134 trials have had mixed success, with no evidence for reduced wasting with breastfeeding support from  
135 birth, and larger reductions from small-quantity lipid-based nutrient supplements between ages 6-24  
136 months (14% relative reduction in wasting, 31% relative reduction in severe wasting).<sup>9,12,13</sup>

137 Wasting is thought to occur primarily from ages 6-24 months during the critical period when  
138 exclusive breastfeeding is no longer recommended and adequate, appropriate and safe complementary  
139 feeding is required,<sup>14,15</sup> but a more complete understanding of the epidemiology of wasting and how it  
140 varies by age is key to develop and target preventive interventions.<sup>14,16,17</sup> Unlike the cumulative process  
141 of linear growth faltering and stunting,<sup>18</sup> wasting varies considerably over time, both within-individuals  
142 and within-populations.<sup>19,20</sup> The dynamic nature of wasting means that the number of distinct episodes  
143 a child experiences may be poorly captured in cross-sectional, survey-based estimates.<sup>21</sup> Furthermore,  
144 seasonal patterns of wasting onset in relation to changes in food insecurity or disease can only be  
145 measured accurately with longitudinal data.<sup>17,22,23</sup> A synthesis of longitudinal cohort data across diverse  
146 populations provides a unique opportunity to study the timing, dynamics, and burden of wasting in  
147 infants and young children — key knowledge gaps to inform future prevention efforts.

148

## 149 **Pooled longitudinal analyses**

150 Here, we report a pooled analysis of 21 longitudinal cohorts from 10 low- and middle-income  
151 countries (LMICs) in South Asia, Sub-Saharan Africa, and Latin America, which measured length and  
152 weight monthly among children 0-24 months of age. Our primary objectives were to produce the first  
153 large-scale estimates of wasting incidence and recovery and to quantify the temporal and regional  
154 variation. We also assessed the concurrence of wasting and stunting and compared estimates of wasting  
155 prevalence and incidence. We analyzed data from the Bill & Melinda Gates Foundation's Knowledge  
156 Integration (*ki*) database, which has aggregated studies on child growth and development.<sup>24</sup> Inclusion  
157 criteria were defined to select cohorts representative of general populations in LMICs with sufficiently  
158 frequent measurements to investigate the acute, dynamic nature of wasting. Cohorts were included if  
159 they: 1) conducted in low- or middle-income countries; 2) enrolled children between birth and age 24  
160 months and measured their length and weight repeatedly over time; 3) did not restrict enrollment to  
161 acutely ill children; 4) had a median birth year of 1990 or later 5) measured anthropometry at least  
162 monthly (Extended Data Fig 1). Twenty-one cohorts met the inclusion criteria, encompassing 11,448  
163 children and 198,154 total anthropometry measurements from birth to age 24 months (Fig 1).

164 We calculated WLZ and LAZ-scores using WHO 2006 growth standards.<sup>25</sup> We dropped 385  
165 biologically implausible measurements (0.2%) of WLZ ( $> 5$  or  $< -5$  Z-score), 212 (0.1%) of LAZ ( $> 6$  or  $< -6$   
166 Z-score), and 216 (0.1%) of WAZ ( $> 5$  or  $< -6$ ), following WHO recommendations.<sup>26</sup> Most included cohorts  
167 did not measure children past 24 months, so analyses focused on birth to 24 months. Cohorts ranged in  
168 size from 160 children in the TDC cohort to 2,931 children from the MRC Keneba cohort (Fig 1). Unless  
169 otherwise indicated, we conducted individual-level analyses within cohorts and then pooled cohort-  
170 specific estimates using random effects models fitted with restricted maximum likelihood estimation, a  
171 conservative approach when cohort-specific estimates are heterogeneous. Cohorts were distributed  
172 throughout South Asia, Africa, and Latin America, but did not cover entire regions (Extended Data Fig 2).  
173 Most cohorts measured children every month through age 24 months, but there was some attrition as  
174 children aged and there were four cohorts with few measurements beyond 15 months (Extended Data

175 Fig 3). Pooled estimates at older ages could be slightly biased if unmeasured cohorts or children were  
176 systematically different from those that were included — for example, if children who were lost to  
177 follow-up were more likely to be wasted, we might have under-estimated wasting at older ages.

178 We assessed *ki* cohort representativeness by comparing Z-score measurements to population-based  
179 samples in Demographic and Health Surveys (DHS). Mean z-scores in *ki* cohorts were generally  
180 representative based on country-level DHS estimates, with lower WLZ (overall and by age) in Guatemala,  
181 Pakistan, and South Africa and higher WLZ in Brazil and Guatemala (Extended Data Fig 4). LAZ was  
182 generally lower in *ki* cohorts, so estimates of concurrent wasting and stunting may be higher than  
183 estimates from population-based samples, and rates of wasting recovery in early life may be higher  
184 compared with the general population.

185

## 186 **Age-specific patterns of wasting**

187 Across all cohorts, mean WLZ was near  $-0.5$  at birth and then increased over the first 6 months  
188 before decreasing until 12 months (Fig 2a). Age-specific patterns in WLZ were similar across geographic  
189 regions, but levels varied substantially by region. WLZ was markedly lower among South Asian cohorts,  
190 reflecting a much higher burden of malnutrition (Fig 2a). Children were wasted for 16,139 (8.6%)  
191 measurements, and severely wasted for 3,391 (1.8%) measurements. Wasting prevalence was highest at  
192 birth (11.9%; 95% CI: 7.0, 19.5) in contrast with prior studies that showed peak wasting prevalence  
193 between 6-24 months old (Fig 2b).<sup>6,27-29</sup> Across regions, wasting prevalence decreased from birth to  
194 three months before increasing until 12 months old; however, wasting was far more prevalent in South  
195 Asian cohorts. In South Asian cohorts – where low birthweight is common<sup>30</sup> – at-birth wasting prevalence  
196 was 18.9% (95% CI: 15.0, 23.7), implicating causes of poor fetal growth like maternal malnutrition,  
197 maternal morbidities, and maternal small stature as key regional drivers of wasting.<sup>31,32</sup> Severe wasting  
198 followed a similar pattern but was much rarer (Extended Data Fig 5).

199 Wasting onset was highest during the first 3 months largely due to its high occurrence at birth (Fig  
200 2c). Overall, 12.9% (95% CI: 7.6, 20.1) of all children experienced wasting by age 3 months, which  
201 accounted for almost half (47.8%) of children who ever experienced wasting in their first two years of  
202 life. Focusing on wasting prevalence alone masked how common it was for children to experience  
203 wasting in their first 24 months. After birth, up to 6.5% (95% CI: 4.9, 8.6) of children were wasted at a  
204 specific visit, but 29.2% (95% CI: 17.5, 44.7) of children experienced at least one wasting episode by 24  
205 months of age. Cumulative incidence was highest in South Asian cohorts (52.2% [95% CI: 43.5, 60.7]),  
206 Figs 2b, c). Early onset of wasting was consistently high across countries with different levels of health  
207 spending, poverty, and under-5 mortality, with early wasting particularly high (18.3% [95% CI: 13.5,  
208 24.4] at-birth) in the five cohorts with birth measures and a national health expenditure  $< 4.5\%$  of gross  
209 domestic product (Extended Data Fig 6). WHO Child Growth Standards overestimate wasting at birth  
210 among children born preterm,<sup>33</sup> though adjustment for gestational age among four cohorts with  
211 available data only reduced at-birth stunting prevalence by 0.8% and increased underweight prevalence  
212 by 0.7% (Extended data Fig 7). Even if preterm birth were to account for some of the at-birth wasting,  
213 the small birth size, irrespective of cause, documented in this analysis raises concern because of its  
214 consequences for child growth faltering and mortality during the first 24 months.<sup>32</sup>

215

## 216 **Wasting incidence and recovery**

217 There was high variability in WLZ across longitudinal measurements, with an average within-  
218 child standard deviation of WLZ measurements of 0.76, compared to 0.64 for LAZ and 0.52 for WAZ. We  
219 thus defined unique wasting episodes by imposing a 60-day recovery period, covering two consequent  
220 monthly measurements, where a child's WLZ measurements needed to remain above  $-2$  to be



221 considered recovered and at risk for a future episode (Fig 3a). Children who were born wasted were  
222 considered to have an incident episode of wasting at birth. More than half of all first wasting episodes  
223 occurred before age 9 months (median age of first episode onset: 264 days) with later onset for  
224 recurrent episodes among children who experienced them (median age of second episode onset: 449  
225 days, median age of third episode onset: 551 days). The mean number of wasting episodes experienced  
226 and wasting incidence at all ages was higher in South Asia, with highest incidence in the first 3 months  
227 with- or without- including episodes at birth (Fig 3b). Ultimately, most children recovered from  
228 moderate or severe wasting episodes, reinforcing its status as an acute condition. Children met our  
229 definition of “recovered” in 91.5% of episodes of moderate and 82.5% of episodes of severe wasting.  
230 Loss-to-follow-up may have affected recovery estimates because recovery can only occur in children  
231 surviving the episode. We did not have data on wasting treatment, so recovery may be more common in  
232 these highly monitored cohorts than in the general population due to treatment referrals. Across all  
233 cohorts, children recovered from 39.0% (95% CI: 34.0, 44.3) of wasting episodes within 30 days, 64.7%  
234 (95% CI: 59.3, 69.4) within 60 days, and 71.1% (95% CI: 66.1, 75.6) within 90 days, with lower recovery in  
235 South Asian cohorts compared with other regions (Fig 3c).

236 We examined the distribution of WLZ in the three-month period after a child was considered  
237 recovered from wasting, stratified by the age at which the episode occurred. We found that children  
238 recovered to a higher WLZ following at-birth wasting or wasting episodes in the 0-6 month age window  
239 compared to episodes that occurred at older ages (Fig 3d). Regression to the mean (RTM) may explain  
240 some wasting recovery, especially the rapid WLZ gain among children born wasted (Figure 3e). However,  
241 there was catch-up growth beyond the calculated RTM effect (Extended Data Fig 8)<sup>34</sup> and we required a  
242 60-day recovery period to better capture true recovery. Additionally, placental insufficiency causes a  
243 large proportion of intrauterine growth restriction leading to birth wasting, and rapid WLZ gain after  
244 may reflect true recovery to a child’s growth potential after this constraint is removed.<sup>35,36</sup> Consistent  
245 with larger WLZ increases during recovery from wasting among younger children, a larger proportion of  
246 children recovered within 30, 60, and 90 days if the wasting episode occurred before 6 months of age  
247 (Fig 3d). Younger children had more variable WLZ (SD: 0.81 <6 months, 0.54 from 6-24 months) and  
248 shorter wasting episodes (Extended Data Fig 9). Wasting episodes were also longer at all ages in South  
249 Asian compared to African or Latin American cohorts (Extended Data Fig 9). Longer episodes among  
250 older children are consistent with higher prevalence and lower incidence compared with children <6  
251 months.

252 On average, the WLZ of children born wasted did not catch up to the WLZ of children not born  
253 wasted (Fig 3e). Notably, children who were born wasted but recovered had a higher cumulative  
254 incidence of wasting after 6 months of age (38.1% cumulative incidence in children born wasted [95% CI:  
255 28.2, 49.2] versus 24.2% cumulative incidence in children not born wasted [95% CI: 17.6, 32.4], Fig 3f).  
256 Longitudinal analyses showed a negative, reinforcing relationship between wasting and stunting: at  
257 nearly every age, wasting increased the risk of future stunting and stunting increased the risk of future  
258 wasting, with the strength of relationship increasing as children aged. This observation is consistent with  
259 longer duration of wasting episodes (Extended Data Fig 10).

260

## 261 **Seasonality of wasting**

262 We joined monthly rainfall totals to cohorts by location and year., For each cohort we estimated  
263 a seasonality index based on rainfall (details in Methods). We examined both the average WLZ over the  
264 calendar year and seasonal changes with respect to rainfall, under the hypothesis that seasonal changes  
265 in food availability and infection associated with rainfall could cause seasonal wasting.<sup>37</sup> Mean WLZ  
266 varied dramatically by calendar date in almost all cohorts, with a consistent minimum mean WLZ  
267 coinciding with peak rainfall (Fig 4a). When pooled across cohorts, mean WLZ was -0.16 (95% CI: -0.19, -

268 0.14) lower during the three-month period of peak rainfall, compared to the mean WLZ in the opposite  
269 three-month period of the year, (Fig. 4b). Mean seasonal decline in WLZ was -0.27 (95% CI: -0.31, -0.24)  
270 in cohorts with a seasonality index > 0.9, but some cohorts showed seasonal WLZ declines of more than  
271 -0.5 (Fig. 4b).

272 Children who experienced seasonal wasting during the rainy season experienced longer  
273 episodes and were at higher risk of future wasting episodes. Rainy season wasting episodes lasted 7  
274 days longer than dry season episodes (median 42 days [95% CI: 36.5 to 45.5] versus 35 days [95% CI:  
275 33.5 to 38.5]). Incident wasting during the rainy season increased a child's risk of experiencing another  
276 wasting episode in the following dry season (relative risk: 2.1, 95% CI: 1.3 to 3.4), and children who were  
277 wasted during the rainy season during their first year of life were 1.9 times (95% CI: 1.3 to 2.8) more  
278 likely to be wasted during the next rainy season.

279 South Asian cohorts had temporally synchronous rainfall, so we estimated WLZ at birth by  
280 calendar month, pooled across the 11 South Asian cohorts. Mean WLZ at birth varied by up to 0.72 z  
281 (95% CI: 0.43 to 1.02) depending on the month the child was born (range: -0.5 z to -1.3 z; Fig 4c), which  
282 suggests that seasonally-influenced maternal nutrition<sup>38</sup> – likely mediated through intrauterine growth  
283 restriction or preterm birth<sup>39</sup> – was a major determinant of WLZ at birth. Birth month also influenced the  
284 effect of season on WLZ trajectories that persisted through a child's second year of life (Extended Data  
285 Fig 11), and children born in the three-month periods before or during maximum rainfall were more  
286 likely to be wasted after 6 months of age than children born in the 6 months after maximum rainfall  
287 (cumulative incidence ratio: 1.4 [95% CI: 1.1 to 1.9]).

288

## 289 **Persistent and concurrent growth faltering**

290 We examined more severe forms of growth faltering, including persistent wasting and  
291 concurrent wasting and stunting, because these conditions are associated with higher mortality risk.<sup>5</sup>  
292 We first identified a subset of children who experienced persistent wasting during their first 24 months.  
293 We used a pragmatic definition<sup>40</sup> that classified children as persistently wasted if  $\geq 50\%$  of their WLZ  
294 measurements from birth to 24 months fell below -2. This allowed us to capture both frequent short  
295 wasting episodes or less frequent, longer episodes. Among 10,374 children with at least four  
296 measurements, 3.4% (95% CI: 2.0, 5.6) were persistently wasted. Persistent wasting over the first 24  
297 months of life was highest in South Asia (7.2%, 95% CI: 5.1 to 10.4, Extended Data Fig 5a). Among all  
298 children wasted at birth, 10.9% were persistently wasted after 6 months (95% CI: 8.7 to 13.5) whereas  
299 6.3% of children not born wasted who were persistently wasted after 6 months (95% CI: 4.3 to 9.0).

300 Finally, we examined the cumulative incidence of concurrent wasting and stunting and the  
301 timing of their overlap. Overall, 10.6% of children experienced concurrent wasting and stunting before 2  
302 years of age (Extended data figure 5d), and a further 1.5% experienced concurrent severe wasting and  
303 stunting — far higher than point prevalence estimates in the present study (4.1% at 24 months, 95% CI:  
304 2.6 to 6.4; Fig 5a) or the 4.3% prevalence estimated in children under 5 in LMIC from cross-sectional  
305 surveys.<sup>41,42</sup> Concurrent wasting and stunting was most common in South Asia, with the highest  
306 prevalence at age 21 months (Fig 5a), driven primarily by increases in stunting prevalence as children  
307 aged.<sup>18</sup> Wasted and stunted children are also underweight, as their maximum possible weight-for-age z-  
308 score is below -2.35.<sup>43</sup> Almost half of children who had prevalent growth faltering met two or more of  
309 these three growth faltering conditions, with 17-22% of all children experiencing multiple conditions  
310 after age 12 months (Fig 5b). Longitudinal analyses showed that early growth faltering predisposed  
311 children to concurrent growth faltering at older ages: children who were wasted by age 6 months were  
312 1.8 (95% CI: 1.6 to 2.1) times and children stunted before 6 months were 2.9 (95% CI: 2.5 to 3.4) times  
313 more likely to experience concurrent wasting and stunting between ages 18-24 months. A companion

314 article reports an in-depth investigation of key risk factors for persistent wasting and concurrent wasting  
315 and stunting, along with their consequences for future severe growth faltering and mortality.<sup>32</sup>

316

## 317 Discussion

318 Nearly all large-scale studies of child wasting (including DHS) report point prevalence of wasting,  
319 which has enabled broad comparisons between populations but failed to capture the number of  
320 episodes of wasting during the course of childhood.<sup>44,45</sup> By combining information across several  
321 longitudinal cohorts, this study demonstrates that children experience far higher cumulative incidence  
322 of wasting between birth and 24 months (29.2%) than previously known. Children in all included cohorts  
323 experienced higher incidence compared with prevalence due to the episodic nature of acute  
324 malnutrition, and the pattern was most stark in South Asian cohorts where, from birth to 24 months and  
325 pooled across cohorts, 52.2% of children experienced at least one wasting episode, 7.3% were  
326 persistently wasted, and 10.1% had experienced concurrent wasting and stunting. This evidence shows  
327 that the cumulative, child-level burden of wasting is higher than cross-sectional prevalence measures  
328 would suggest, and that assessments of wasting and stunting in isolation fail to account for their joint  
329 burden, which can be substantial. This is of particular relevance in South Asia where the largest number  
330 of stunted and wasted children live, and while stunting prevalence is decreasing, wasting prevalence is  
331 not.<sup>1,46</sup>

332 Our results show consistent patterns in the timing of wasting onset by age and by season, with  
333 important implications for therapeutic and preventive interventions. Wasting incidence was highest  
334 from birth to 3 months, and among children who experienced any wasting during their first 24 months,  
335 48% experienced their first episode by 3 months. Children born wasted were far more likely to  
336 experience more growth faltering at older ages, including more severe forms like persistent wasting  
337 from 6-24 months and concurrent wasting and stunting at 18 months (Fig 3f). Age-specific patterns in  
338 prevalent wasting and concurrent wasting and stunting summarized in this analysis accord with previous  
339 reports.<sup>6,47-50</sup> To our knowledge, highest wasting incidence from birth to 3 months has not been  
340 previously described across diverse cohorts. We found higher rates of recovery among children who  
341 were wasted before 6 months, but early wasting episodes predisposed children to subsequent episodes  
342 at older ages, which tended to be longer and more likely to co-occur with stunting. These new findings  
343 suggest that the prenatal period through 6 months should be a focus for preventive wasting  
344 interventions because preventing episodes during this early window would reduce the risk of later, more  
345 severe forms of growth faltering and lower a child's risk of all-cause mortality substantially, as we detail  
346 in a companion paper.<sup>32</sup>

347 Large seasonal changes in at-birth WLZ demonstrate a plasticity in population-level wasting  
348 whereby improvements are possible over a period of months rather than years or generations. WLZ  
349 varied dramatically by season in most cohorts, and in South Asia WLZ varied by up to 0.7 z at birth with  
350 consequences that persisted throughout the first 24 months (Fig 4c, Extended Data Fig 11). Seasonal  
351 effects plausibly extend to older ages: children born during the rainy season in rural Gambia – which  
352 coincide with the hunger season – experienced higher rates of all-cause mortality over their entire  
353 lifespan compared with children born during other times of the year. This suggests that in-utero  
354 programming of the immune system could be a significant consequence of pre-natal malnutrition.<sup>51</sup> This  
355 study has not elucidated the mechanism that links seasonal rainfall with wasting, but the consistency of  
356 effect across diverse cultural and environmental contexts suggests shared mechanisms.<sup>52</sup>

357 Consistent timing with highly seasonal rainfall helps plan therapeutic programs, but seasonally  
358 targeted preventive interventions may benefit from a finer understanding of the mechanisms. In-depth  
359 analyses of some birth cohorts that contributed to the present synthesis suggest multiple mechanisms



360 underlying seasonal wasting. Seasonal food insecurity coincides with peak energy demands during  
361 agricultural work periods, which in turn leads to undernutrition among pregnant and lactating mothers  
362 and their children.<sup>17,36,51</sup> Women working in agriculture often have less time to spend with their children,  
363 which can reduce breastfeeding frequency and can result in early morning preparation of weaning foods  
364 that become contaminated in hot, humid conditions.<sup>53,54</sup> Weather-driven seasonal increases in  
365 infectious disease transmission could also play a role in seasonal wasting, but the effect would vary  
366 spatially and temporally and would not fully explain the consistent patterns observed here.

367 Sustainable Development Goal 2.2 calls to eliminate malnutrition by 2030, with child wasting as  
368 its primary indicator.<sup>55</sup> The WHO global action plan on child wasting identified four key outcomes to  
369 achieve goal 2.2: reduce low birthweight, improve child health, improve child feeding, and improve  
370 treatment of wasting.<sup>56</sup> Our results align with the WHO action plan but elevate the importance of  
371 improving at-birth child outcomes with a focus on both maternal support during pregnancy and  
372 nutritional supplementation in food-insecure populations for women of childbearing age, pregnant  
373 women, and children <24 months. At this time, evidence-based interventions that target this early  
374 window include balanced protein energy supplementation and iron and folic acid supplementation  
375 delivered to pregnant women and women of child-bearing age, and intermittent preventive sulfadoxine-  
376 pyrimethamine delivered to pregnant women in high malaria transmission regions of Africa.<sup>57,58</sup> For  
377 children, ages 6-24 months small-quantity lipid-based nutrient supplements have demonstrated  
378 reductions in moderate and severe wasting.<sup>9</sup> If preventive or therapeutic interventions focus on children  
379 younger than 6 months, then they must integrate carefully with current recommendations for exclusive  
380 breastfeeding. In populations with highly seasonal rainfall, augmented, seasonally targeted  
381 supplementation should be considered.

382

383

## 384 References

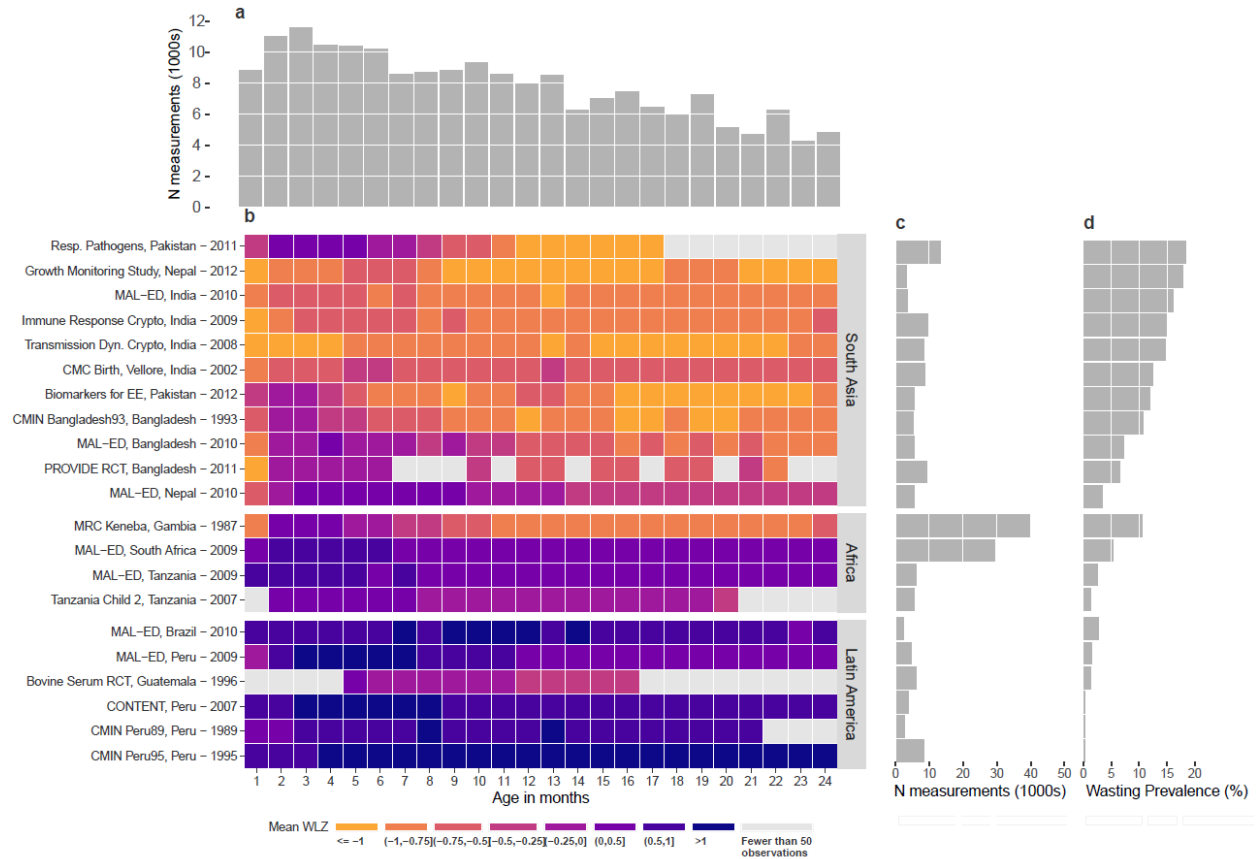
- 385 1. WHO | UNICEF-WHO-The World Bank: Joint child malnutrition estimates - Levels and trends. *WHO*  
386 <http://www.who.int/nutgrowthdb/estimates/en/>.
- 387 2. Onis, M. de. WHO Child Growth Standards based on length/height, weight and age. *Acta Paediatr.*  
388 **95**, 76–85 (2006).
- 389 3. Rytter, M. J. H., Kolte, L., Briend, A., Friis, H. & Christensen, V. B. The Immune System in Children  
390 with Malnutrition—A Systematic Review. *PLOS ONE* **9**, e105017 (2014).
- 391 4. Chang, C. Y. *et al.* Children successfully treated for moderate acute malnutrition remain at risk for  
392 malnutrition and death in the subsequent year after recovery. *J. Nutr.* **143**, 215–220 (2013).
- 393 5. McDonald, C. M. *et al.* The effect of multiple anthropometric deficits on child mortality: meta-analysis  
394 of individual data in 10 prospective studies from developing countries. *Am. J. Clin. Nutr.* **97**, 896–901  
395 (2013).
- 396 6. Schoenbuchner, S. M. *et al.* The relationship between wasting and stunting: a retrospective cohort  
397 analysis of longitudinal data in Gambian children from 1976 to 2016. *Am. J. Clin. Nutr.*  
398 doi:10.1093/ajcn/nqy326.
- 399 7. Khandelwal, N. *et al.* Determinants of motor, language, cognitive, and global developmental delay in  
400 children with complicated severe acute malnutrition at the time of discharge: An observational study  
401 from Central India. *PLOS ONE* **15**, e0233949 (2020).
- 402 8. Sudfeld, C. R. *et al.* Malnutrition and Its Determinants Are Associated with Suboptimal Cognitive,  
403 Communication, and Motor Development in Tanzanian Children. *J. Nutr.* **145**, 2705–2714 (2015).
- 404 9. Keats, E. C. *et al.* Effective interventions to address maternal and child malnutrition: an update of the  
405 evidence. *Lancet Child Adolesc. Health* **5**, 367–384 (2021).
- 406 10. Stobaugh, H. C. *et al.* Relapse after severe acute malnutrition: A systematic literature review and  
407 secondary data analysis. *Matern. Child. Nutr.* **15**, e12702 (2019).

- 408 11. O'Sullivan, N. P., Lelijveld, N., Rutishauser-Perera, A., Kerac, M. & James, P. Follow-up between 6  
409 and 24 months after discharge from treatment for severe acute malnutrition in children aged 6-59  
410 months: A systematic review. *PLOS ONE* **13**, e0202053 (2018).
- 411 12. Rana, R., McGrath, M., Sharma, E., Gupta, P. & Kerac, M. Effectiveness of Breastfeeding Support  
412 Packages in Low- and Middle-Income Countries for Infants under Six Months: A Systematic Review.  
413 *Nutrients* **13**, 681 (2021).
- 414 13. Dewey, K. G. *et al.* Preventive small-quantity lipid-based nutrient supplements reduce severe wasting  
415 and severe stunting among young children: an individual participant data meta-analysis of  
416 randomized controlled trials. *Am. J. Clin. Nutr.* nqac232 (2022) doi:10.1093/ajcn/nqac232.
- 417 14. Lenters, L., Wazny, K. & Bhutta, Z. A. Management of Severe and Moderate Acute Malnutrition in  
418 Children. in *Reproductive, Maternal, Newborn, and Child Health: Disease Control Priorities, Third  
419 Edition (Volume 2)* (eds. Black, R. E., Laxminarayan, R., Temmerman, M. & Walker, N.) (The  
420 International Bank for Reconstruction and Development / The World Bank, 2016).
- 421 15. Das, J. K., Salam, R. A., Imdad, A. & Bhutta, Z. A. Infant and Young Child Growth. in *Reproductive,  
422 Maternal, Newborn, and Child Health: Disease Control Priorities, Third Edition (Volume 2)* (eds.  
423 Black, R. E., Laxminarayan, R., Temmerman, M. & Walker, N.) (The International Bank for  
424 Reconstruction and Development / The World Bank, 2016).
- 425 16. Bhutta, Z. A. *et al.* What works? Interventions for maternal and child undernutrition and survival.  
426 *Lancet* **371**, 417–440 (2008).
- 427 17. Nabwera, H. M., Fulford, A. J., Moore, S. E. & Prentice, A. M. Growth faltering in rural Gambian  
428 children after four decades of interventions: a retrospective cohort study. *Lancet Glob. Health* **5**,  
429 e208–e216 (2017).
- 430 18. Benjamin-Chung, J. *et al.* (submitted). Early childhood linear growth faltering in low-and middle-  
431 income countries. (2020).
- 432 19. Stobaugh, H. C. *et al.* Children with Poor Linear Growth Are at Risk for Repeated Relapse to Wasting  
433 after Recovery from Moderate Acute Malnutrition. *J. Nutr.* **148**, 974–979 (2018).
- 434 20. Osgood-Zimmerman, A. *et al.* Mapping child growth failure in Africa between 2000 and 2015. *Nature*  
435 **555**, 41–47 (2018).
- 436 21. Bulti, A. *et al.* Improving estimates of the burden of severe acute malnutrition and predictions of  
437 caseload for programs treating severe acute malnutrition: experiences from Nigeria. *Arch. Public  
438 Health* **75**, (2017).
- 439 22. Egata, G., Berhane, Y. & Worku, A. Seasonal variation in the prevalence of acute undernutrition  
440 among children under five years of age in east rural Ethiopia: a longitudinal study. *BMC Public Health*  
441 **13**, (2013).
- 442 23. Kinyoki, D. K. *et al.* Space-time mapping of wasting among children under the age of five years in  
443 Somalia from 2007 to 2010. *Spat. Spatio-Temporal Epidemiol.* **16**, 77–87 (2016).
- 444 24. Peppard, T. *et al.* (submitted). Combined longitudinal growth cohorts from infants born in South Asia,  
445 Sub-Saharan Africa and Latin America. (2020).
- 446 25. WHO Multicentre Growth Reference Study Group. WHO child growth standards: length/height-for-  
447 age, weight-for-age, weight-for-length, weight-for-height and body mass index-for-age: Methods and  
448 development. *Geneva World Health Organ.* 312 pages (2006).
- 449 26. Organization, W. H. & Fund (UNICEF), U. N. C. *Recommendations for data collection, analysis and  
450 reporting on anthropometric indicators in children under 5 years old.* (World Health Organization,  
451 2019).
- 452 27. de Onis, M. *et al.* Comparison of the World Health Organization (WHO) Child Growth Standards and  
453 the National Center for Health Statistics/WHO international growth reference: implications for child  
454 health programmes. *Public Health Nutr.* **9**, 942–947 (2006).
- 455 28. Garenne, M., Myatt, M., Khara, T., Dolan, C. & Briend, A. Concurrent wasting and stunting among  
456 under-five children in Niakhar, Senegal. *Matern. Child. Nutr.* **15**, (2019).
- 457 29. Payandeh, A., Saki, A., Safarian, M., Tabesh, H. & Siadat, Z. Prevalence of Malnutrition among  
458 Preschool Children in Northeast of Iran, A Result of a Population Based Study. *Glob. J. Health Sci.* **5**,

- 459 208–212 (2013).
- 460 30. Blencowe, H. *et al.* National, regional, and worldwide estimates of low birthweight in 2015, with trends  
461 from 2000: a systematic analysis. *Lancet Glob. Health* **0**, (2019).
- 462 31. Ashorn, P. *et al.* Co-causation of reduced newborn size by maternal undernutrition, infections, and  
463 inflammation. *Matern. Child. Nutr.* **14**, e12585 (2018).
- 464 32. Mertens, A. *et al.* (submitted). Causes and consequences of child growth faltering in low- and middle-  
465 income countries. (2020).
- 466 33. Perumal, N. *et al.* Effect of correcting for gestational age at birth on population prevalence of early  
467 childhood undernutrition. *Emerg. Themes Epidemiol.* **15**, 3 (2018).
- 468 34. Barnett, A. G., van der Pols, J. C. & Dobson, A. J. Regression to the mean: what it is and how to deal  
469 with it. *Int. J. Epidemiol.* **34**, 215–220 (2005).
- 470 35. Pardi, G., Marconi, A. M. & Cetin, I. Placental-fetal interrelationship in IUGR fetuses--a review.  
471 *Placenta* **23 Suppl A**, S136-141 (2002).
- 472 36. Chou, F.-S. *et al.* Exposure to placental insufficiency alters postnatal growth trajectory in extremely  
473 low birth weight infants. *J. Dev. Orig. Health Dis.* **11**, 384–391 (2020).
- 474 37. Levy, K., Woster, A. P., Goldstein, R. S. & Carlton, E. J. Untangling the Impacts of Climate Change  
475 on Waterborne Diseases: a Systematic Review of Relationships between Diarrheal Diseases and  
476 Temperature, Rainfall, Flooding, and Drought. *Environ. Sci. Technol.* **50**, 4905–4922 (2016).
- 477 38. Saville, N. M. *et al.* Comprehensive analysis of the association of seasonal variability with maternal  
478 and neonatal nutrition in lowland Nepal. *Public Health Nutr.* 1–16 (2021)  
479 doi:10.1017/S1368980021003633.
- 480 39. Christian, P. *et al.* Risk of childhood undernutrition related to small-for-gestational age and preterm  
481 birth in low- and middle-income countries. *Int J Epidemiol* **42**, 1340–1355 (2013).
- 482 40. Richard, S. A. *et al.* Wasting Is Associated with Stunting in Early Childhood123. *J. Nutr.* **142**, 1291–  
483 1296 (2012).
- 484 41. Khara, T., Mwangome, M., Ngari, M. & Dolan, C. Children concurrently wasted and stunted: A meta-  
485 analysis of prevalence data of children 6–59 months from 84 countries. *Matern. Child. Nutr.* **14**,  
486 e12516 (2018).
- 487 42. Victora, C. G. *et al.* Revisiting maternal and child undernutrition in low-income and middle-income  
488 countries: variable progress towards an unfinished agenda. *The Lancet* **397**, 1388–1399 (2021).
- 489 43. Myatt, M. *et al.* Children who are both wasted and stunted are also underweight and have a high risk  
490 of death: a descriptive epidemiology of multiple anthropometric deficits using data from 51 countries.  
491 *Arch. Public Health* **76**, (2018).
- 492 44. Akombi, B. J. *et al.* Stunting, Wasting and Underweight in Sub-Saharan Africa: A Systematic Review.  
493 *Int. J. Environ. Res. Public Health* **14**, (2017).
- 494 45. Harding, K. L., Aguayo, V. M. & Webb, P. Factors associated with wasting among children under five  
495 years old in South Asia: Implications for action. *PloS One* **13**, e0198749 (2018).
- 496 46. Mutunga, M., Frison, S., Rava, M. & Bahwere, P. The Forgotten Agenda of Wasting in Southeast  
497 Asia: Burden, Determinants and Overlap with Stunting: A Review of Nationally Representative Cross-  
498 Sectional Demographic and Health Surveys in Six Countries. *Nutrients* **12**, 559 (2020).
- 499 47. Mutunga, M. *et al.* The relationship between wasting and stunting in Cambodian children: Secondary  
500 analysis of longitudinal data of children below 24 months of age followed up until the age of 59  
501 months. *PLOS ONE* **16**, e0259765 (2021).
- 502 48. Kohlmann, K. *et al.* Exploring the relationships between wasting and stunting among a cohort of  
503 children under two years of age in Niger. *BMC Public Health* **21**, 1713 (2021).
- 504 49. Iversen, P. O., Ngari, M., Westerberg, A. C., Muhoozi, G. & Atukunda, P. Child stunting concurrent  
505 with wasting or being overweight: A 6-y follow up of a randomized maternal education trial in Uganda.  
506 *Nutr. Burbank Los Angel. Cty. Calif* **89**, 111281 (2021).
- 507 50. Odei Obeng-Amoako, G. A. *et al.* Factors associated with concurrent wasting and stunting among  
508 children 6–59 months in Karamoja, Uganda. *Matern. Child. Nutr.* **17**, e13074 (2020).

- 509 51. Moore, S. E. *et al.* Season of birth predicts mortality in rural Gambia. *Nature* **388**, 434–434 (1997).  
510 52. Rehkopf, D. H., Glymour, M. M. & Osypuk, T. L. The Consistency Assumption for Causal Inference in  
511 Social Epidemiology: When a Rose is Not a Rose. *Curr. Epidemiol. Rep.* **3**, 63–71 (2016).  
512 53. Prentice, A. M. & Cole, T. J. Seasonal changes in growth and energy status in the Third World. *Proc.*  
513 *Nutr. Soc.* **53**, 509–519 (1994).  
514 54. Rowland, M. G., Barrell, R. A. & Whitehead, R. G. Bacterial contamination in traditional Gambian  
515 weaning foods. *Lancet Lond. Engl.* **1**, 136–138 (1978).  
516 55. United Nations. Goal 2. Sustainable Development Knowledge Platform.  
517 <https://sustainabledevelopment.un.org/sdg2>.  
518 56. Global action plan on child wasting: a framework for action to accelerate progress in preventing and  
519 managing child wasting and the achievement of the Sustainable Development Goals.  
520 <https://www.who.int/publications/m/item/global-action-plan-on-child-wasting-a-framework-for-action>.  
521 57. ter Kuile, F. O., van Eijk, A. M. & Filler, S. J. Effect of sulfadoxine-pyrimethamine resistance on the  
522 efficacy of intermittent preventive therapy for malaria control during pregnancy: a systematic review.  
523 *JAMA* **297**, 2603–2616 (2007).  
524 58. Kayentao, K. *et al.* Intermittent preventive therapy for malaria during pregnancy using 2 vs 3 or more  
525 doses of sulfadoxine-pyrimethamine and risk of low birth weight in Africa: systematic review and  
526 meta-analysis. *JAMA* **309**, 594–604 (2013).  
527  
528  
529  
530  
531  
532

It is made available under a [CC-BY 4.0 International license](https://creativecommons.org/licenses/by/4.0/).



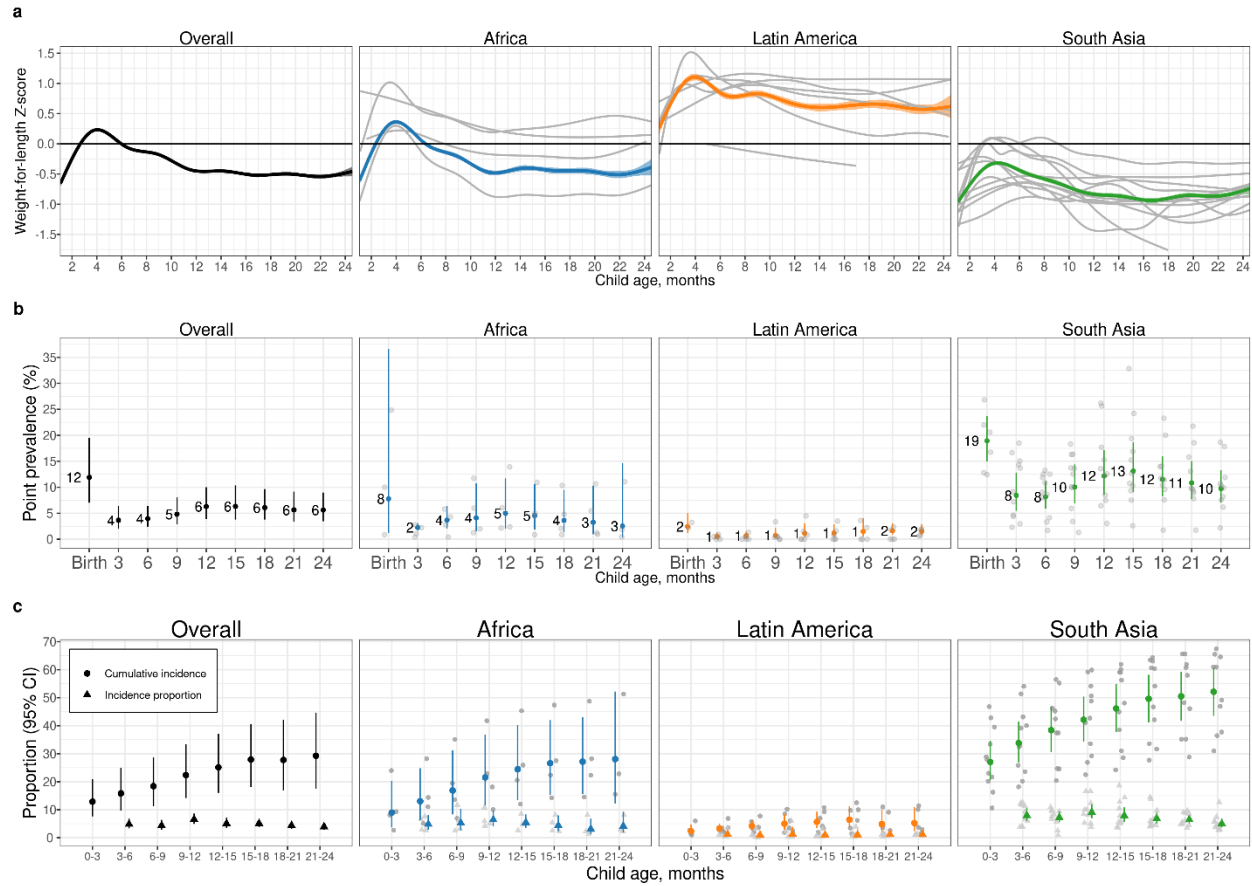
533

534 **Figure 1 | Summaries of included cohorts.**

535 (a) Number of observations (1000s) across cohorts by age in months. (b) Mean weight-  
 536 for-length Z-scores (WLZ) by age in months for each included cohort. Cohorts are  
 537 sorted by geographic region and overall mean weight-for-length Z-score. The country of  
 538 each cohort and the start year is printed by each cohort name. (c) The number of  
 539 observations included in each cohort. (d) Overall wasting prevalence by cohort, defined  
 540 as proportion of measurements with WLZ < -2.

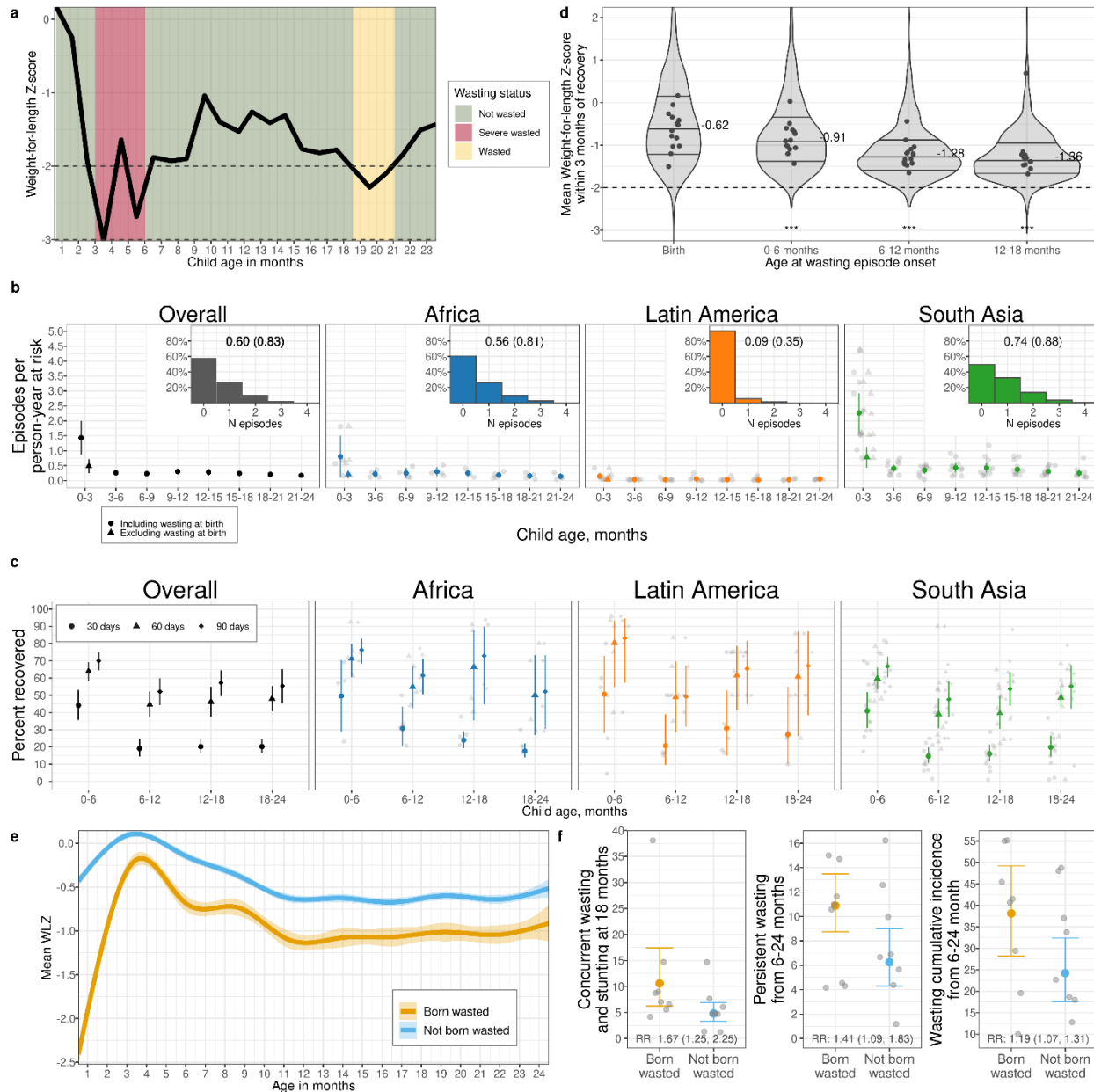


It is made available under a [CC-BY 4.0 International license](https://creativecommons.org/licenses/by/4.0/).



541  
 542 **Figure 2 | WLZ, prevalence and incidence of wasting by age and region.**  
 543 (a) Mean weight-for-length Z-score (WLZ) by age in 21 longitudinal cohorts, overall (N=21 studies;  
 544 N=4,165-10,886 observations per month) and stratified by region (Africa: N=4 studies, N=1,067-5,428  
 545 observations; Latin America: N=6 studies, N= 569-1718 observations, South Asia 11 studies, N=2,382-  
 546 4,286 observations).  
 547 (b) Age-specific wasting prevalence, defined as WLZ < -2, overall (N=3,985-9,906 children) and stratified  
 548 by region (Africa: 1,701-5,017 children, Latin America: N= 290-1397 children, South Asia: N=1,994-3,751  
 549 children).  
 550 (c) Age-specific wasting incidence overall (N=6,199 -10,377 children) and stratified by region (Africa:  
 551 N=2,249-5,259 children, Latin America: N=763-1,437 children, South Asia: N=3,076-3,966 children).  
 552 Cumulative incidence measures the proportion of children who have ever experienced wasting since  
 553 birth, while the new incident cases represent the proportion of children at risk who had an episode of  
 554 wasting begin during the age period.  
 555 Error bars in panels b and c are 95% confidence intervals for pooled estimates. In each panel, grey  
 556 curves or points show cohort-specific estimates.

It is made available under a [CC-BY 4.0 International license](https://creativecommons.org/licenses/by/4.0/).



557

558

### Figure 3| Wasting incidence rate and recovery.

559

560

561

562

563

(a) Example child WLZ trajectory and wasting episode classifications. The age of wasting onset was assumed to occur halfway between a measurement of WLZ  $< -2$  and the previous measurement of WLZ  $\geq -2$ . Recovery from an episode of wasting or severe wasting occurred when a child had measurements of WLZ  $\geq -2$  for at least 60 days, with the age of recovery assumed to be halfway between the last measurement of WLZ  $< -2$  and the first measurement of WLZ  $\geq -2$ .

564

565

566

567

(b) Wasting incidence rate per 1,000 days at risk, stratified by age and region (Overall: N= 510,070-822,802 person-days per estimate, Africa: N=245,046-407,940 person-days, Latin America: N= 65,058-142,318 person-days, South Asia: N=182,694-315,057 person-days). Insets are histograms of the number of wasting episodes per child by region, with the distribution mean (SD) printed within the plot.

568

569

(c) Percentage of children who recovered from wasting within 30, 60, and 90 days of episode onset (N=21 cohorts, 5,549 wasting episodes).

570

571

(d) The distribution of children's mean WLZ in the three months following recovery from wasting, with inter-quartile range marked. The median WLZ is annotated, and gray points mark cohort-specific

572 medians. Children wasted before age 6 months experienced larger improvements in WLZ compared with  
573 children wasted at older ages ( $p < 0.001$ ). The analysis uses 3,686 observations of 2,301 children who  
574 recovered from wasting episodes, with 1,264 observations at birth, 628 observations from 0-6 months,  
575 824 observations from 6-12 months, and 970 observations from 12-18 months.

576 (e) Mean WLZ by age, stratified by wasting status at birth (which includes the first measure of a child  
577 within 7 days of birth), shows that children born wasted ( $N = 814$  children, 14,351 observations) did not  
578 catch up to children not born wasted ( $N = 3,355$  children, 62,568 observations).

579 (f) Increased risk of multiple types of wasting after age 6 months among children born wasted ( $N = 814$ ),  
580 with the relative risks (RR) for born wasted versus not and 95% confidence intervals printed at the bottom  
581 ( $N = 3,355$ ).

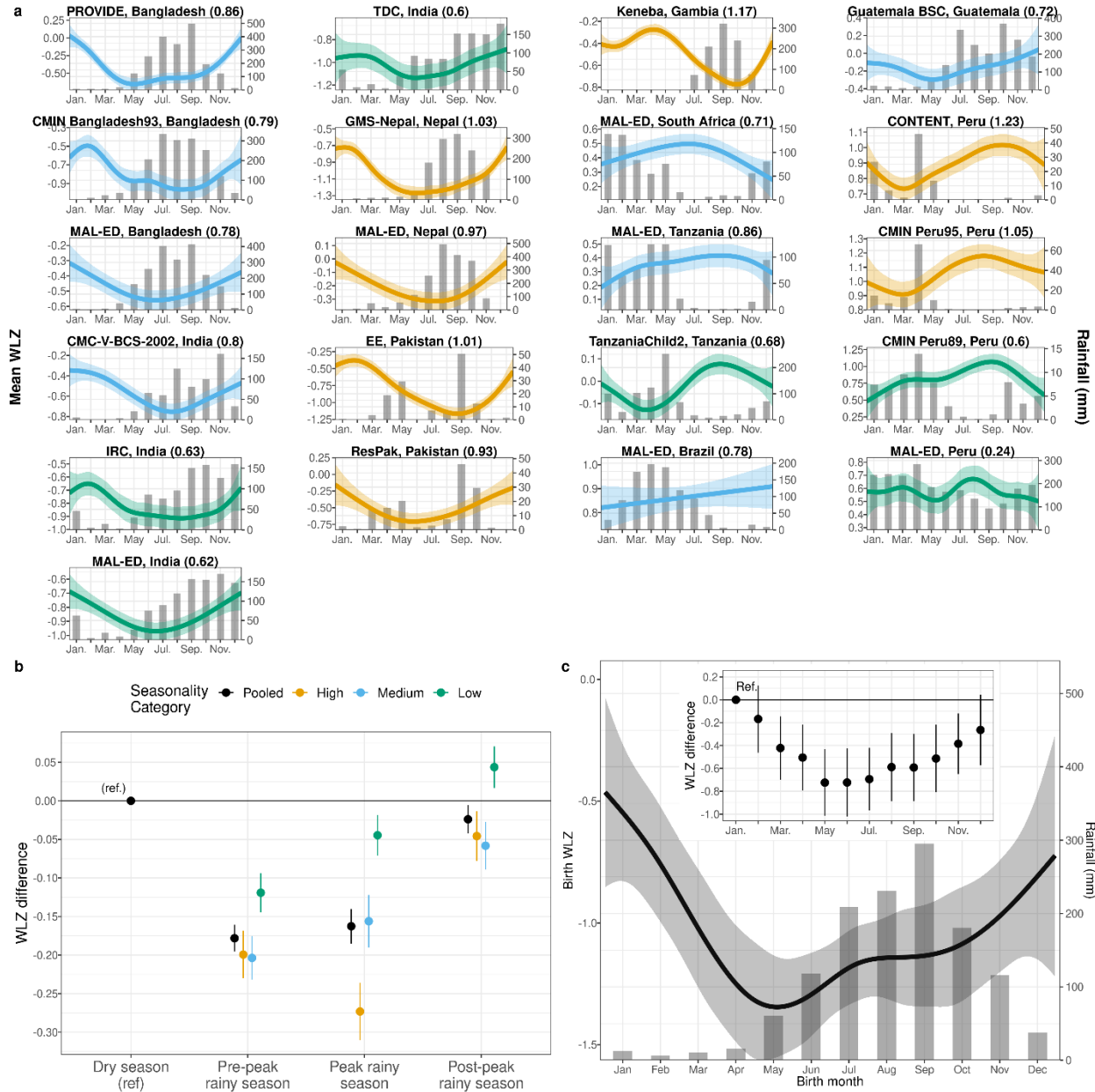
582 In panels b, d, and f, vertical lines mark 95% confidence intervals for pooled means of study specific  
583 estimates (light points).

584

585

586

It is made available under a [CC-BY 4.0 International license](https://creativecommons.org/licenses/by/4.0/).



587

588

**Figure 4 | Mean weight-for-length Z-scores by age and season.**

589

590

591

592

593

594

595

596

597

598

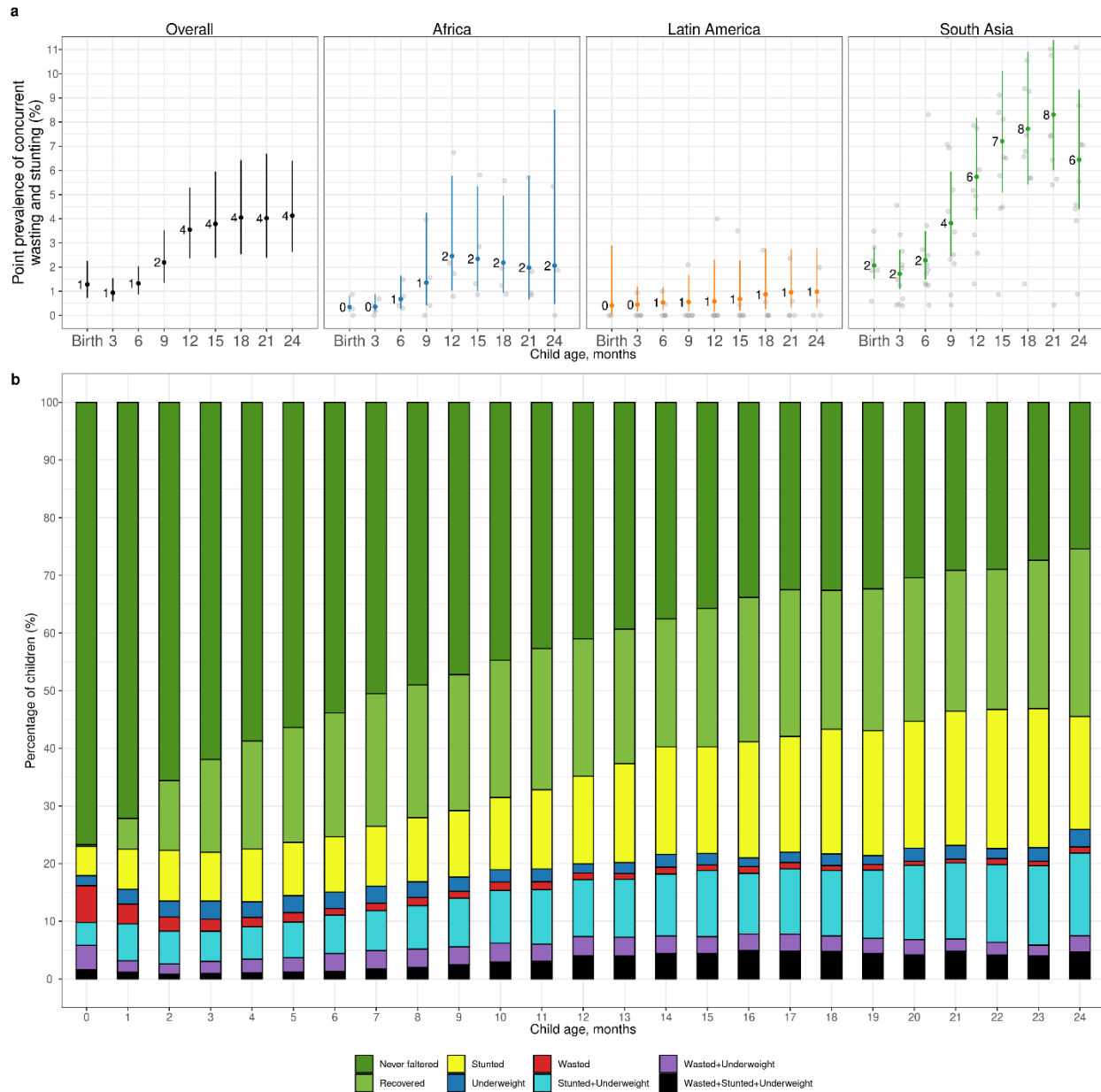
599

600

601

602

(a) Mean WLZ by day of the year, superimposed over histograms of monthly mean rainfall over study periods, with the seasonality index printed in parentheses beside the cohort name. Means (lines) estimated with cubic splines and shaded regions indicate pointwise 95% confidence intervals. Panels are sorted by country and mean WLZ colored by high ( $\geq 0.9$ ), medium ( $< 0.9$  and  $\geq 0.7$ ), and low seasonality index categories ( $< 0.7$ ). Sample sizes range from 160 children (2,545 measurements) in TDC to 2,545 (40,115 measurements) in the Keneba cohort. (b) Mean differences in child WLZ between quarters of the year defined around the adjacent 3-month periods with the highest mean rainfall, pooled across cohorts in panel a, overall (N= 21 cohorts, 2,545-40,115 observations) and by seasonality index (high: N=7 cohorts, 3,164-40,115 observations, medium: N=8 cohorts, 2,545-9,202 observations, low: N=6 cohorts, 2,741-29,518 observations). Points represent mean differences compared to the dry season and error bars represent 95% confidence intervals. (c) Mean WLZ at birth by month of birth estimated with a cubic spline among 1,821 children with WLZ measured at birth in 10 South Asian cohorts. The mean (line) was estimated with cubic splines and the shaded region is its pointwise 95% confidence interval. The inset plot summarizes mean differences in birth WLZ by month of birth (points) and error bars represent 95% confidence intervals.



603

604

**Figure 5| Co-occurrence of wasting, stunting, and underweight.**

605

(a) Age-specific prevalence of concurrent wasting and stunting overall (N=3,984 to 9,899

606

children) and stratified by region (Africa: N=1,799-5,014, Latin America: N=290-1,397 children,

607

South Asia: N=1,994-3,747 children). Vertical lines mark 95% confidence intervals for pooled

608

means across study-specific estimates (gray points).

609

(b) Percentage of children classified by different measures of growth faltering, alone or

610

combined. Children classified as “never faltered” had not previously been wasted, stunted, or

611

underweight. Children in the “recovered” category were not wasted, stunted, or underweight but

612

had experienced at least one of these conditions previously. All children who were wasted and

613

stunted were also underweight. Proportions in each category were calculated within cohorts,

614

pooled using random effects, and scaled so percentages added to 100%. The number of

615

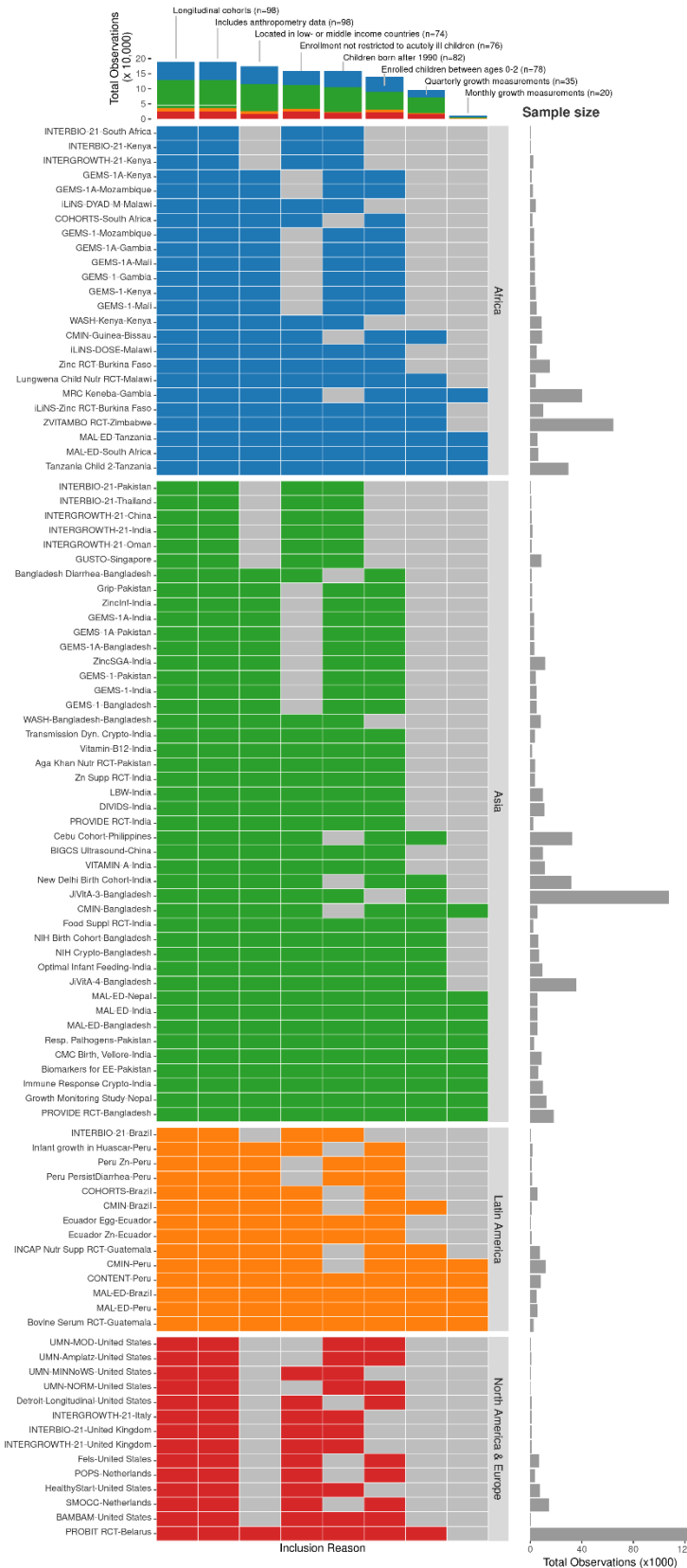
children contributing to each age ranges from 3,920 to 9,077 children, with 11,409 total

616

children.

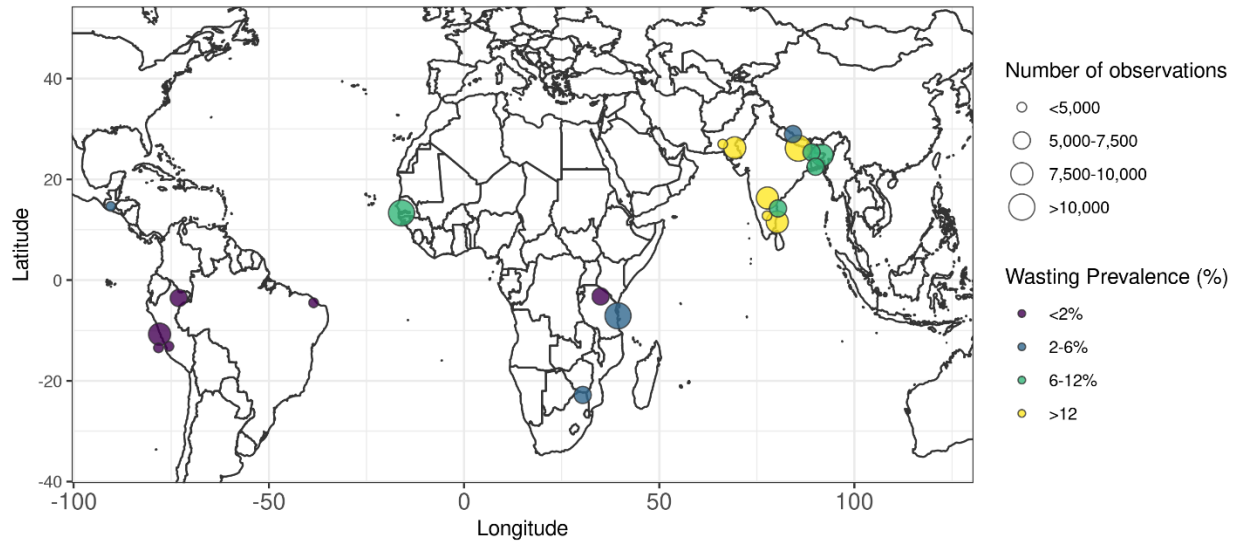


It is made available under a [CC-BY 4.0 International license](https://creativecommons.org/licenses/by/4.0/).



618 **Extended Data Figure 1| *ki* cohort selection.** Analyses focused on longitudinal cohorts to enable the  
619 estimation of prospective incidence rates and growth velocity. On July 15, 2018, there were 86  
620 longitudinal studies on GHAP. From this set, we applied five inclusion criteria to select cohorts for  
621 analysis. Our rationale for each criterion follows. (1) *Studies were conducted in lower income or middle-*  
622 *income countries.* Our target of inference for analyses was children in LMICs, which remains a key target  
623 population for preventive interventions. (2) *Studies measured length and weight between birth and age 24*  
624 *months.* We were principally interested in growth faltering during the first two years of life including at  
625 birth, thought to be the key window for linear growth faltering <sup>7</sup>. (3) *Studies did not restrict enrollment to*  
626 *acutely ill children.* Our focus on descriptive analyses led us to target, to the extent possible, the general  
627 population. We thus excluded some studies that exclusively enrolled acutely ill children, such as children  
628 who presented to hospital with acute diarrhea or who were severely malnourished. (4) *Studies enrolled at*  
629 *least 200 children.* Age-stratified incident episodes of stunting and wasting were sufficiently rare that we  
630 wanted to ensure each cohort would have enough information to estimate rates before contributing to  
631 pooled estimates. (5) *Studies collected anthropometry measurements at least every 3 months.* We limited  
632 studies to those with higher temporal resolution to ensure that we adequately captured incident episodes  
633 and recovery. We further restricted analyses of wasting incidence and recovery to cohorts with monthly  
634 measurements because of high temporal variation in WHZ within individuals.

It is made available under a [CC-BY 4.0 International license](https://creativecommons.org/licenses/by/4.0/) .



635

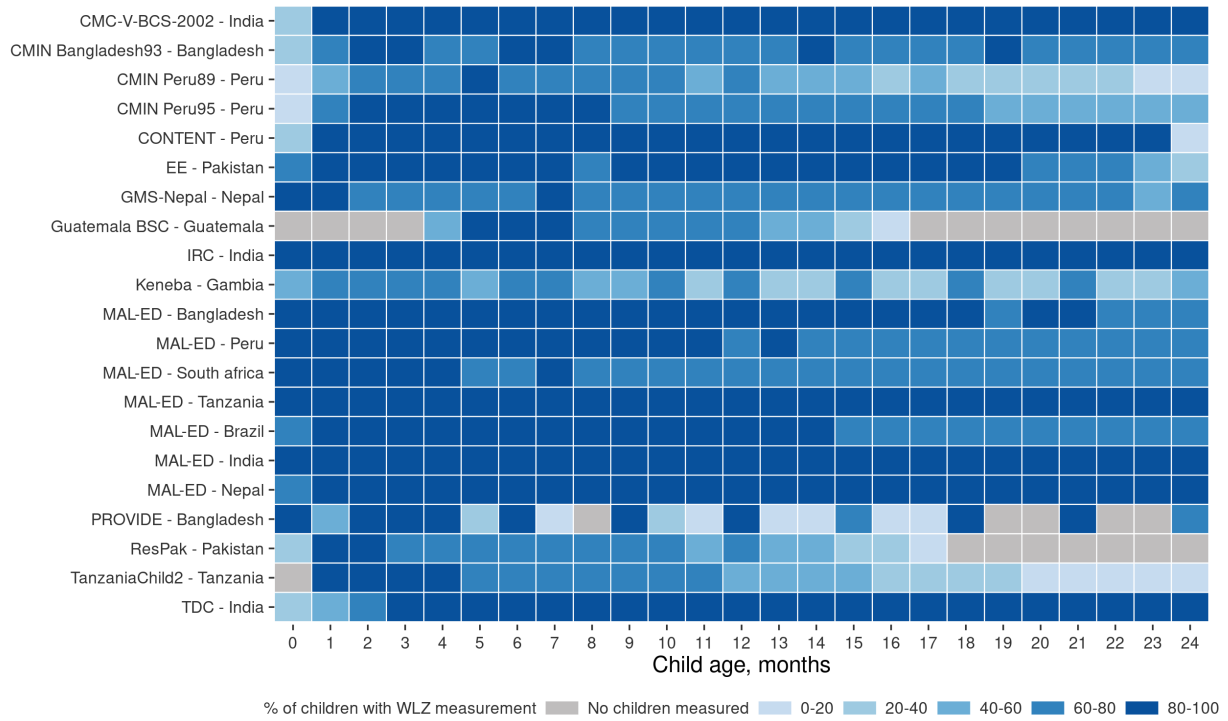
636

637

**Extended Data Figure 2 | Geographic location of *ki* cohorts.** Locations are approximate and jittered slightly for display.

It is made available under a [CC-BY 4.0 International license](https://creativecommons.org/licenses/by/4.0/).

638



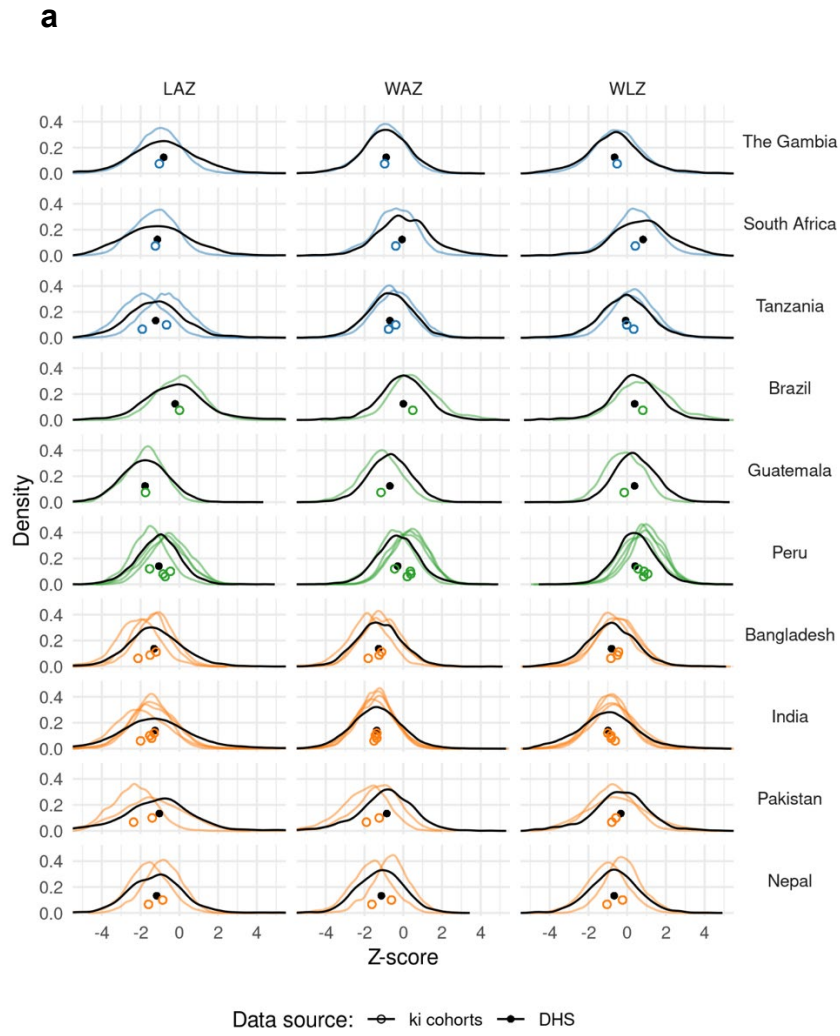
639

640

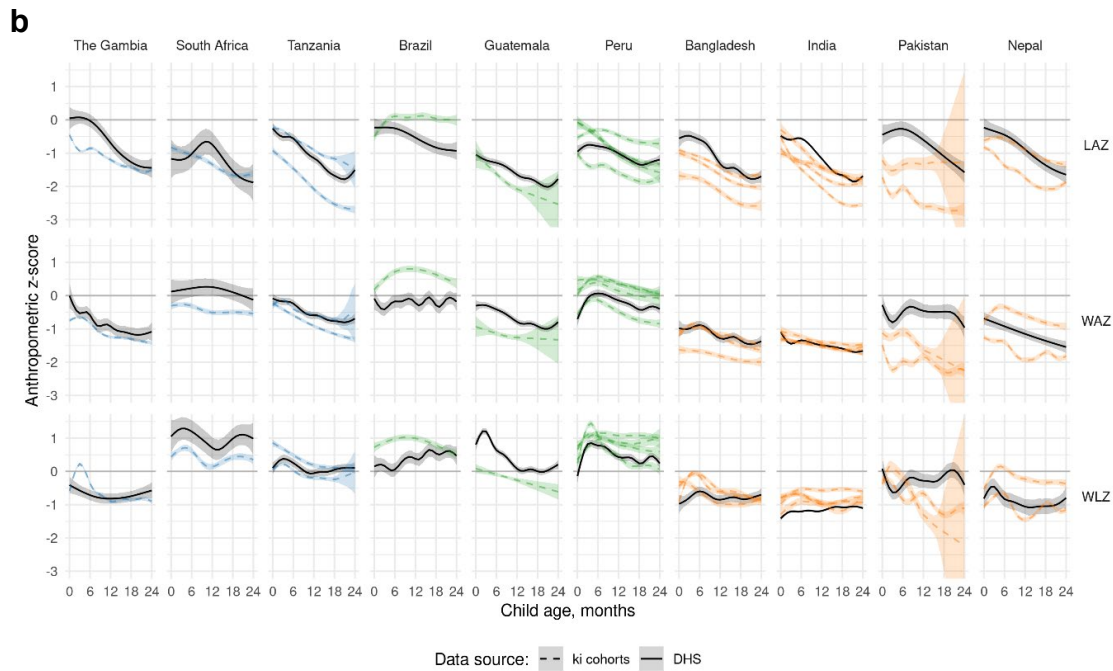
641

**Extended Data Figure 3 | Percentage of enrolled children measured in each ki cohort with monthly measurements.**

It is made available under a [CC-BY 4.0 International license](https://creativecommons.org/licenses/by/4.0/).



642  
643



644



645 **Extended Data Figure 4 | Comparison of cohort anthropometry to population-**  
646 **based samples**

647 (a) Kernel density distributions of length-for-age (LAZ), weight-for-age (WAZ), and weight-for-  
648 length Z-scores (WLZ) from measurements among children under 24 months old in 21 *ki*  
649 longitudinal cohorts (colored line) and among children measured in the most recent  
650 population-based, Demographic and Health Survey for each country (black). Sub-Saharan  
651 African countries are colored blue, Latin American countries are colored green, and south Asian  
652 countries are colored orange. Median Z-scores are denoted with points under the density  
653 curves, with open circles for *ki* cohorts and solid points for Demographic and Health Surveys.

654 (b) Mean LAZ, WAZ, and WLZ by age and country among 21 *ki* longitudinal cohorts (dashed  
655 lines) and in Demographic and Health Surveys (solid). Means estimated with cubic splines and  
656 shaded regions show approximate, simultaneous 95% confidence intervals.

657

658

659

660

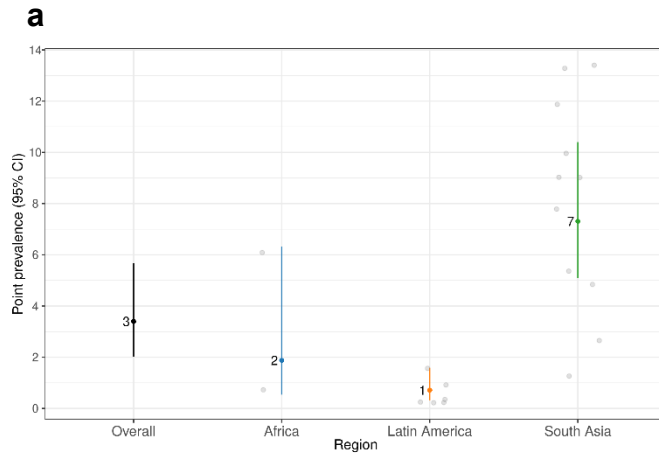
661

662

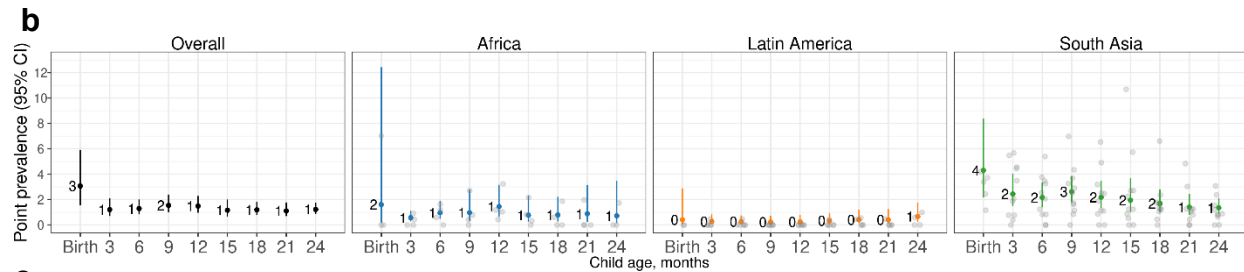
663

664

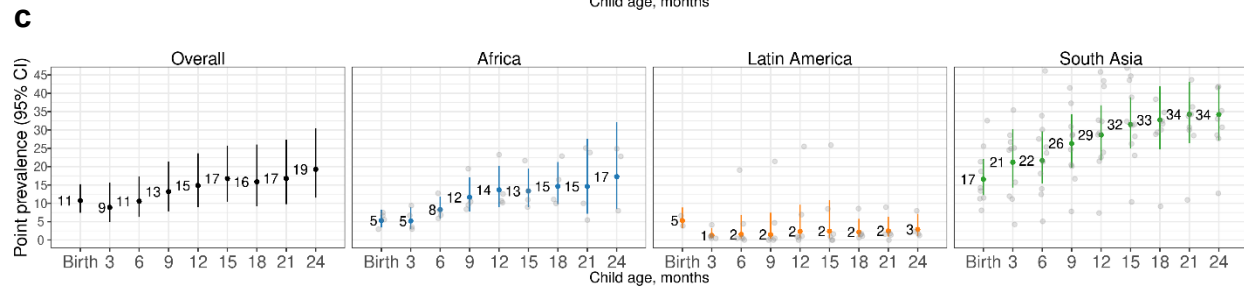
665



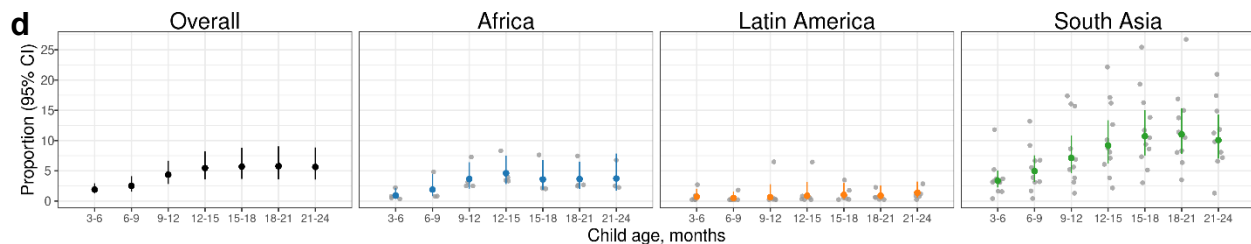
666



667



668



669

670 **Extended Data Figure 5 | Prevalence of persistent wasting, severe wasting, and**  
 671 **underweight by region.**

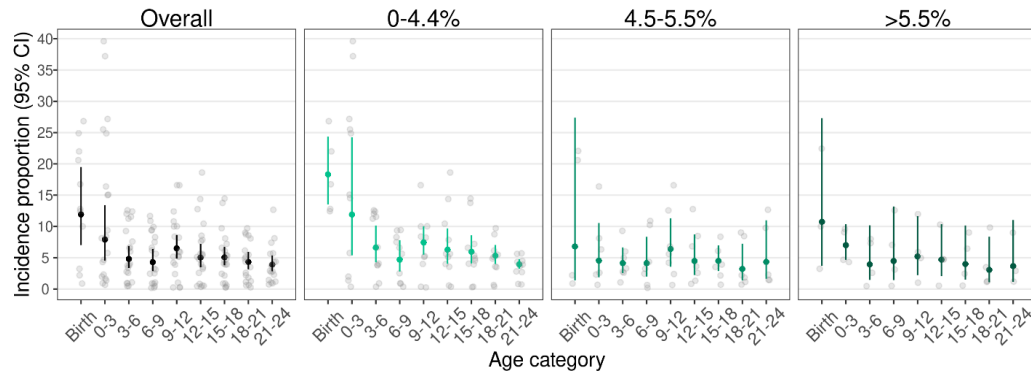
672 (a) Proportion of children persistently wasted ( $\geq 50\%$  of measurements from birth to 24 months of age,  
 673 overall and stratified by region.

674 (b) Prevalence of severe wasting ( $WLZ < -3$ ) by age and region.

675 (c) Prevalence of underweight (weight-for-age Z-score  $< -2$ ) by age and region.

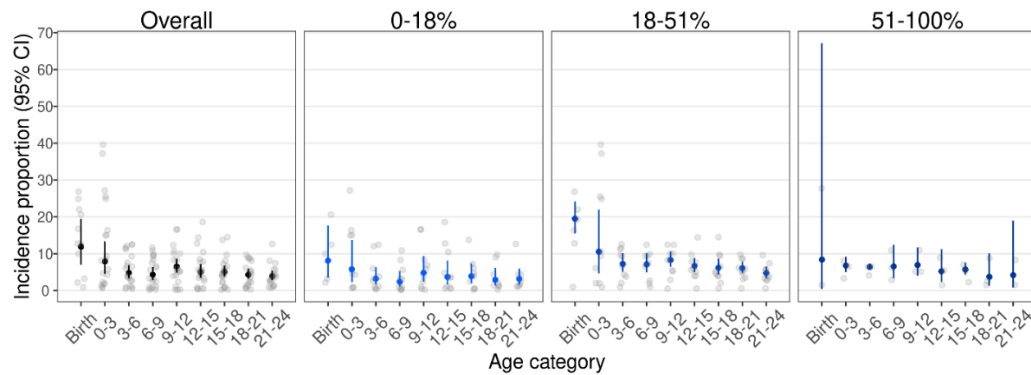
676 (d) Incidence proportion of concurrent wasting and stunting by age and region. Across all ages before 24  
 677 months, 10.6% of children experienced at least one concurrent wasted and stunted measurement.  
 678

**a) National health expenditures (% of gross domestic product)**



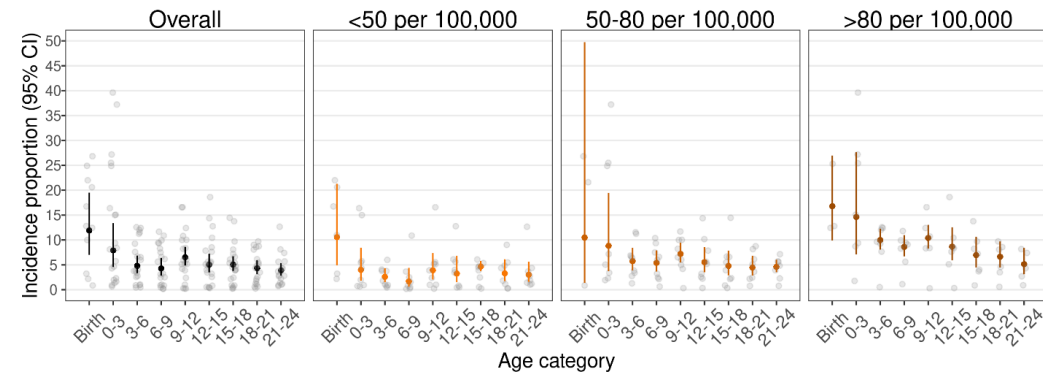
679

**b) National percentage of individuals living on less than \$1.90 per day**



680

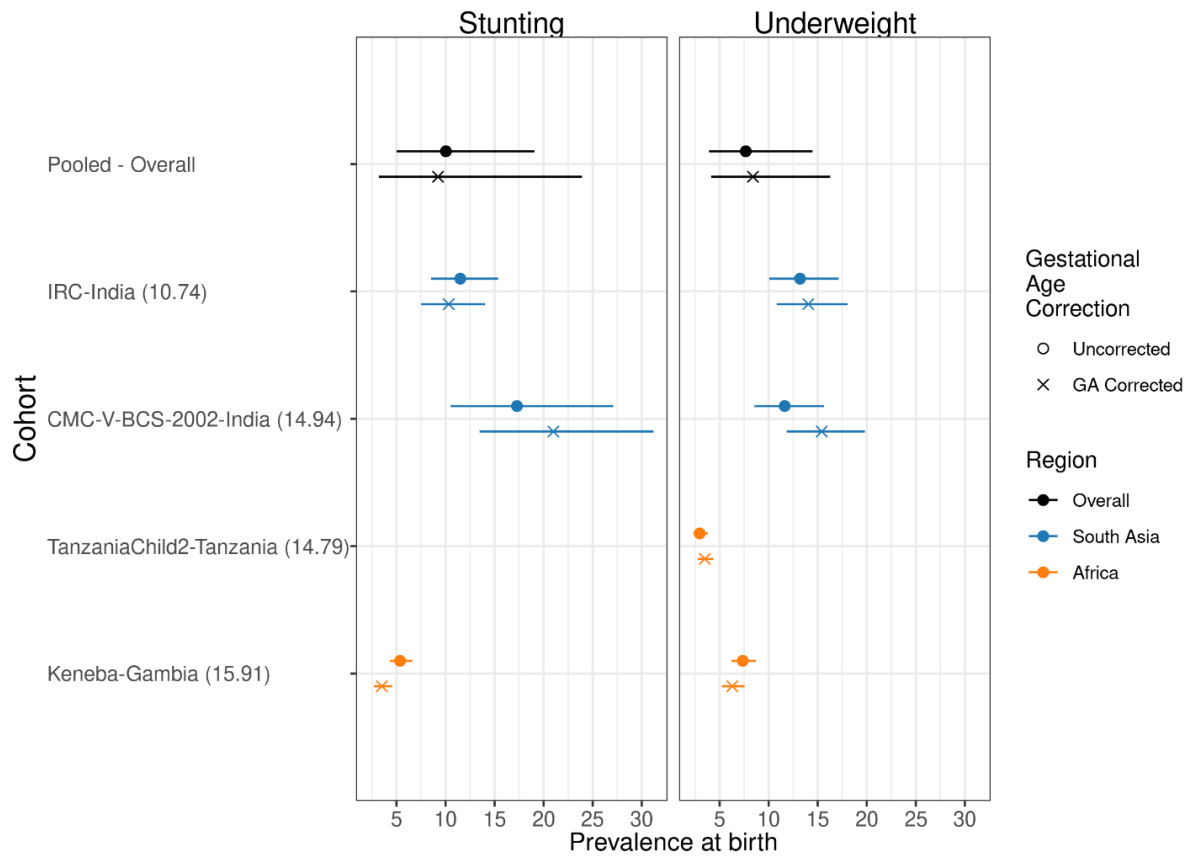
**c) National under-5 mortality rate**



681

**682 Extended Data Figure 6 | Incidence of wasting by age and country characteristics.**

683 Proportion of children at different ages in months who experienced the onset of wasting episodes by (a)  
 684 national health expenditures as a percentage of gross domestic product (0-4.4%: N=5 studies, N=3,305  
 685 children; 4.5-5.5%: N=5 studies, N=2,697 children; >5.5%: N=3 studies, N=3,325 children), (b) national  
 686 percentage of individuals living on less than \$1.90 US per day (0-18%: N= 5 studies, N= 2,818 children;  
 687 18-51%: N= 6 studies, N= 3,584 children; 51-100%: N= 2 studies, N= 3,381 children), and (c) national  
 688 under-5 mortality rate (<50 per 100,000: N= 6 studies, N= 2,743 children; 50-80 per 100,000: N= 3  
 689 studies, N= 3,952 children; >80 per 100,000: N= 3 studies, N= 3,611 children). The “Birth: age categories  
 690 include measurements in the first 7 days of life and the “0-3” age category includes ages 8 days up to 3  
 691 months. Vertical bars indicate 95% confidence intervals from random-effects meta-analysis models with  
 692 restricted maximum likelihood estimation, and gray points indicate cohort-specific estimates.



693

694

695

### Extended Data Figure 7 | Comparison of underweight and stunting prevalence at birth with and without gestational age correction

696

697

698

699

700

701

702

703

704

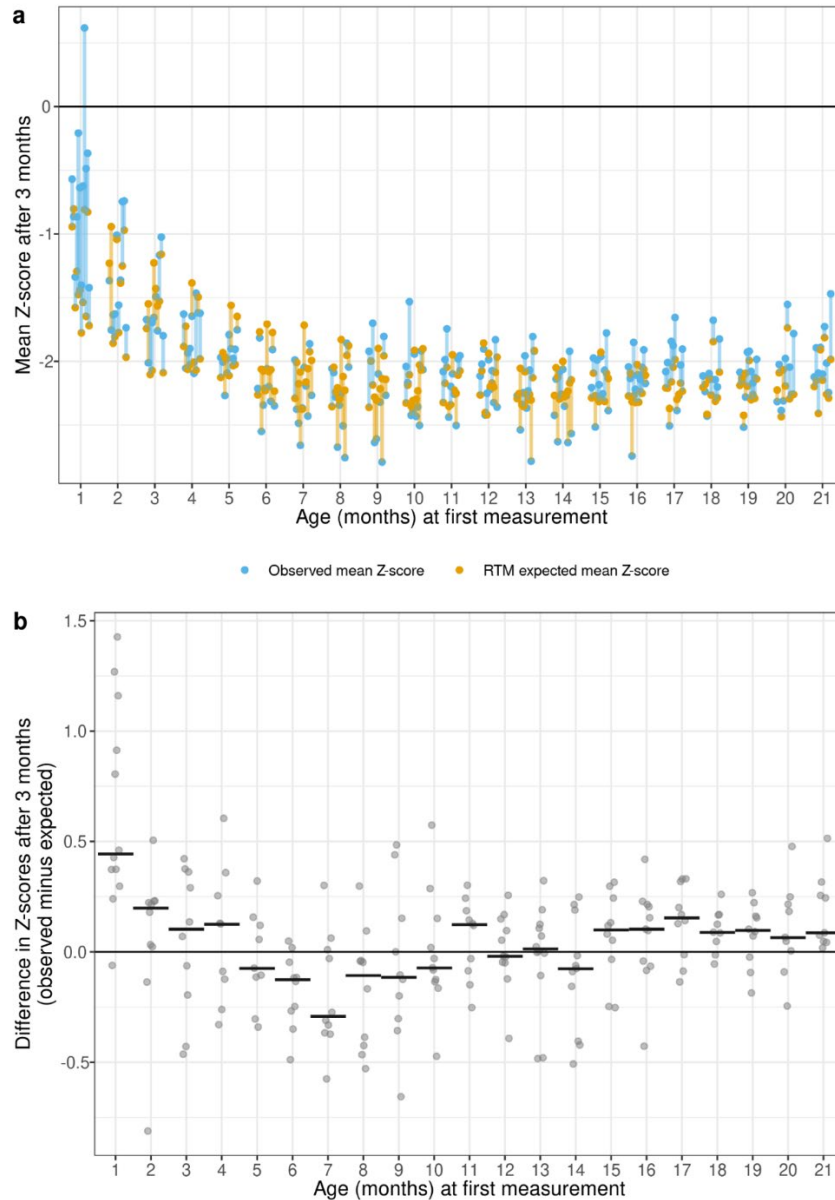
705

706

707

708

This figure includes the results from correcting at-birth Z-scores in the *ki* cohorts that measured gestational age (GA). The corrections are using the Intergrowth standards and are implemented using the R *growthstandards* package (<https://ki-tools.github.io/growthstandards/>). Overall, the prevalence at birth decreased slightly after correcting for gestational age, but the cohort-specific results are inconsistent. Observations with GA outside of the Intergrowth standards range (<168 or > 300 days) were dropped for both the corrected and uncorrected data. Prevalence increased after GA correction in some cohorts due to high rates of late-term births based on reported GA. There were no length measurements at birth in the Tanzania Child 2 cohort, so they do not have stunting estimates. There were 4,449 measurements used in the underweight analysis and 1,931 measurements used in the stunting analysis. Gestational age was estimates based on mother's recall of the last menstrual period in the IRC, CMC-V-BCS-2002, and Tanzania Child cohorts, and was based on the Dubowitz method (newborn exam) in the MRC Keneba cohort.



709

710

### Extended Data Figure 8 | Regression to the mean effects in wasted children

711

(a) Expected mean Z-scores based on the regression to the mean effect (orange) and observed mean Z-scores (blue) 3 months after wasted children are measured. The lines connecting cohort-specific observed and expected WLZ at each age are colored orange if the expected estimate under RTM was higher than the observed mean (indicating lower than expected change in WLZ under RTM alone), and blue if the observed mean was higher than the expected estimate under RTM (indicating higher than expected change in WLZ under RTM alone). For examples, most cohorts experienced larger increases in WLZ than expected in the three-month period beginning in their first month of life (blue lines) and most cohorts experienced smaller increases in WLZ than expected in the three month periods beginning at ages 6-9 months (orange lines).

720

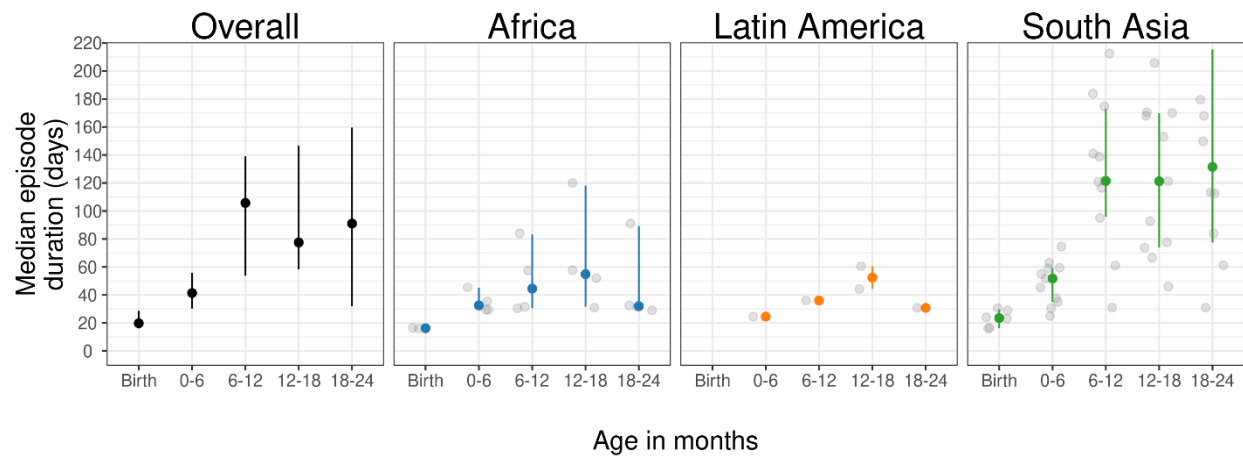
(b) Difference between observed means and expected means under a pure RTM effect by cohort, with the median differences by age indicated with horizontal lines.

721

722

Details on estimation of the RTM effects are in the methods.

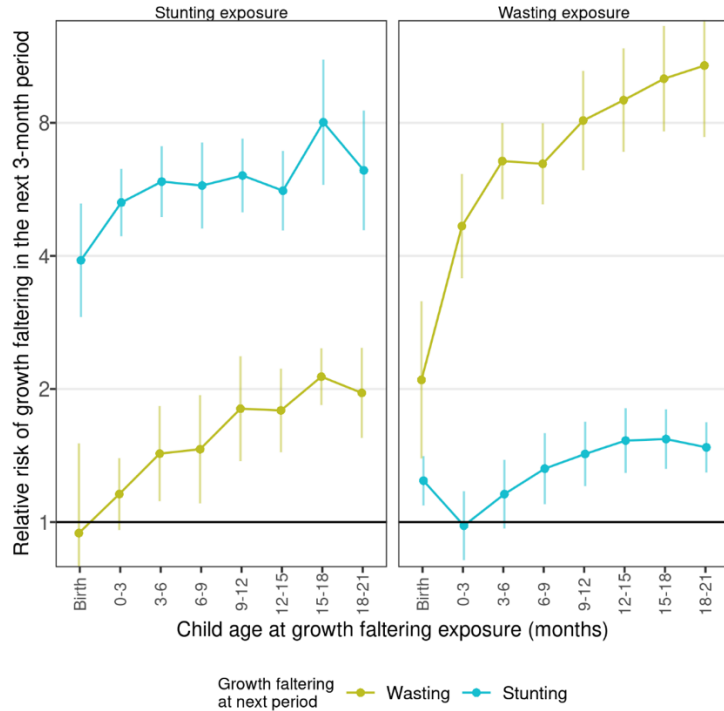




723  
724  
725  
726  
727  
728  
729  
730  
731  
732  
733  
734  
735  
736  
737

### Extended Data Figure 9 | Duration of wasting episodes by child age and region.

Duration of wasting episodes that began in each age category, overall (N=787-1,940 episodes per age category) and stratified by region (Africa: 377-916 episodes, Latin America: N= 11-25 episodes, South Asia: N=410-1,146 episodes). The “Birth: age categories includes measurements in the first 7 days of life and the “0-3” age category includes ages 8 days up to 3 months. Estimates were pooled across cohorts using the median of medians method (McGrath et al., 2019).<sup>1</sup> Vertical bars indicate 95% confidence intervals around the pooled estimates, and gray points indicate cohort-specific estimates. Episodes are assumed to start halfway between non-wasted and wasted measurements, and end halfway between the last wasted measurement and first recovered estimate. Birth episodes start at birth, so episodes at birth are generally shorter than post-birth episodes with the same number of wasted measurements.



738

739

740

### Extended Data Figure 10 | Risk of growth faltering in the subsequent 3 months by whether a child was wasted or stunted at each age

741

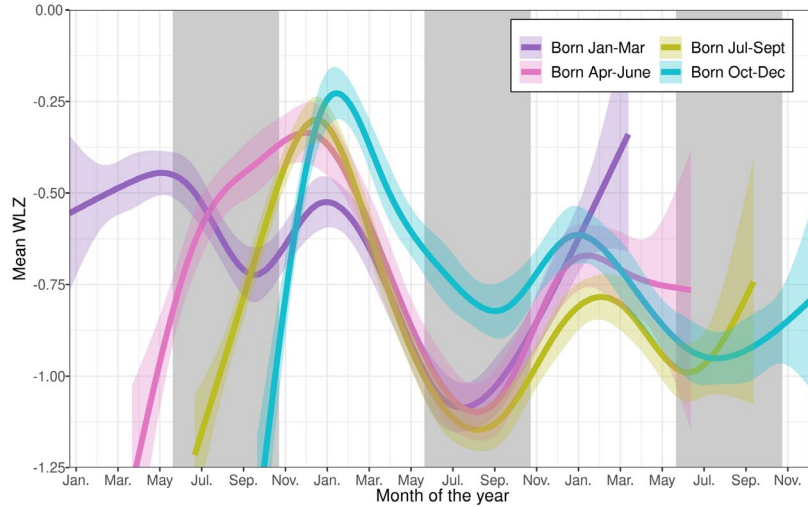
742

743

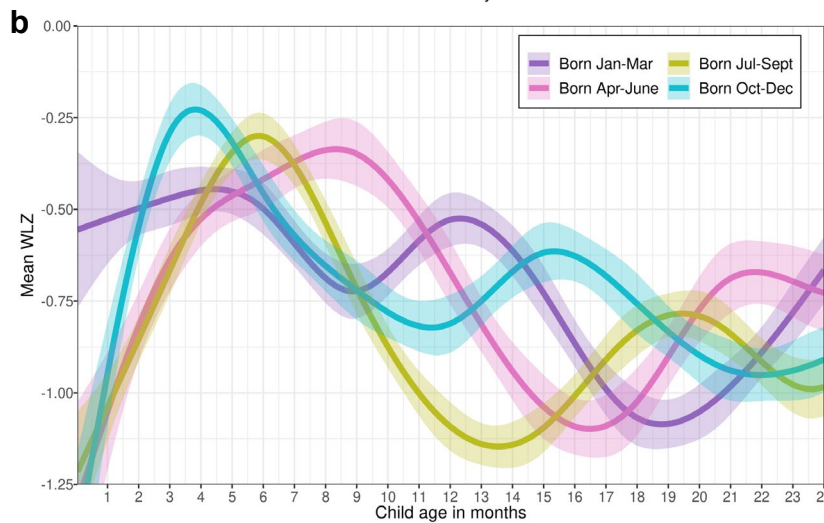
744

745

Relative risk of wasting and stunting in the next 3-month period among children who were wasted (left panel) or stunted (right panel) at each age. For example, children who were wasted at birth had an approximately 2-fold increased risk of wasting during the subsequent 0-3 month period, and children who were stunted at birth had an approximately 4-fold increased risk of being stunted during the subsequent 0-3 month period. Points indicate relative risks and vertical lines mark 95% confidence intervals.



746



747

748

### Extended Data Figure 11 | Month of birth affects seasonal patterns in WLZ

749

750

751

752

753

754

755

756

757

758

(a) Mean WLZ by calendar month among South Asian cohorts, with children stratified by birth month. The X-axis begins at January 1<sup>st</sup> of the year of the first January birthday in each cohort. Grey backgrounds indicate the approximate timing of seasonal monsoons in South Asia (June-September). Shaded regions around spline fits indicate 95% simultaneous confidence intervals. Eleven cohorts, 4,040 children, and 78,573 measurements were used to estimate the splines. South Asian children born in July-September had the lowest mean WLZ overall and children born April-September had larger seasonal declines in WLZ during their second year of life than children born October-March.

(b) Mean WLZ from birth to age 24 months among children from South Asian cohorts stratified by birth month. Shaded regions around spline fits indicate 95% simultaneous confidence intervals. Data used is the same as in panel (a).

**Extended Data Table 1 | Summary of *ki* cohorts**

Region, Study ID	Country	Study Years	Design	Children Enrolled*	Anthropometry measurement ages (months)	Total WLZ measurements*	Primary References
South Asia							
Biomarkers for EE	Pakistan	2013-2015	Prospective cohort	380	Birth, 1, 2, ..., 18	8428	Iqbal et al 2018 Nature Scientific Reports <sup>2</sup>
Resp. Pathogens	Pakistan	2011 - 2014	Prospective cohort	284	Birth, 1, 2, ..., 17	3164	Ali et al 2016 Journal of Medical Virology <sup>3</sup>
Growth Monitoring Study	Nepal	2012 - Ongoing	Prospective cohort	686	Birth, 1, 2, ..., 24	13340	Not yet published
MAL-ED	Nepal	2010 - 2014	Prospective cohort	240	Birth, 1, 2, ..., 24	5695	Shrestha et al 2014 Clin Infect Dis <sup>4</sup>
CMIN93	Bangladesh	1993 - 1996	Prospective Cohort	272	Birth, 3, 6, ..., 24	5372	Pathela et al. 2006 Acta Paediatrica
Transmission Dynamics of Crypto (TDC)	India	2008-2011	Quasi-experimental	160	Birth, 1, 2, ..., 24	3591	Sarkar et al. 2013 BMC Public Health
CMC Birth Cohort, Vellore	India	2002 - 2006	Prospective cohort	373	Birth, 0.5, 1, 1.5, ..., 24	8697	Gladstone et al. 2011 NEJM <sup>5</sup>
MAL-ED	India	2010 - 2012	Prospective cohort	251	Birth, 1, 2, ..., 24	5697	John et al 2014 Clin Infect Dis <sup>6</sup>
Immune Response Crypto Study	India	2008 - 2011	Prospective cohort	410	Birth, 1, 2, ..., 24	9729	Kattula et al. 2014 BMJ Open <sup>7</sup>
MAL-ED	Bangladesh	2010 -2014	Prospective cohort	263	Birth, 1, 2, ..., 24	5592	Ahmed et al 2014 Clin Infect Dis <sup>8</sup>
PROVIDE RCT	Bangladesh	2011 -2014	Individual RCT	700	Birth, 6, 10, 12, 14, 17, 18, 24, 39, 40, 52, 53 (weeks)	9202	Kirkpatrick et al 2015 Am J Trop Med Hyg <sup>9</sup>
Africa							
MAL-ED	Tanzania	2009 - 2014	Prospective cohort	261	Birth, 1, 2, ..., 24	5698	Mduma et al 2014 Clin Infect Dis <sup>10</sup>
Tanzania Child 2	Tanzania	2007 - 2011	Individual RCT	2396	1, 2, ..., 20	29518	Locks et al Am J Clin Nutr 2016 <sup>11</sup>
MAL-ED	South Africa	2009 - 2014	Prospective cohort	312	Birth, 1, 2, ..., 24	6151	Bessong et al 2014 Clin Infect Dis <sup>12</sup>
MRC Keneba	Gambia	1987 - 1997	Cohort	2920	Birth, 1, 2, ..., 24	40117	Schoenbuchner et al. 2019, AJCN <sup>13</sup>
Latin America							
CMIN Peru95	Peru	1995 - 1998	Prospective Cohort	224	Birth, 1, 2, ..., 24	3978	Checkley et al. 2003 Am J Epidemiol.
CMIN Peru89	Peru	1989 - 1991	Prospective Cohort	210	Birth, 1, 2, ..., 24	2741	Checkley et al. 1998 Am J Epidemiol.
MAL-ED	Peru	2009 - 2014	Prospective cohort	302	Birth, 1, 2, ..., 24	6127	Yori et al 2014 Clin Infect Dis <sup>14</sup>

CONTENT	Peru	2007 - 2011	Prospective cohort	215	Birth, 1, 2, ..., 24	8339	Jaganath et al 2014 Helicobacter <sup>15</sup>
Bovine Serum RCT	Guatemala	1997 - 1998	Individual RCT	315	Baseline, 1, 2, ..., 8	2545	Begin et al. 2008, EJCN <sup>16</sup>
MAL-ED	Brazil	2010 - 2014	Prospective cohort	233	Birth, 1, 2, ..., 24	4838	Lima et al 2014 Clin Infect Dis <sup>17</sup>

\*Children enrolled is for children with measurements under 2 years of age. Total measurements are number of measurements of anthropometry on children under 2 years of age.

760

761

### Extended Data Table 2| Summary of baseline characteristics in *ki* cohorts

	CMC-V-BCS- 2002, India (N=373)	CMIN Bangladesh93 (N=280)	CMIN Peru89 (N=210)	CMIN Peru95 (N=224)	CONTENT, Peru (N=215)	EE, Pakistan (N=380)	GMS- Nepal (N=698)	Guatemala BSC (N=315)	IRC, India (N=410)	Keneba, The Gambia (N=2954)
<b>Sex</b>										
Female	187 (50.1%)	122 (43.6%)	100 (47.6%)	96 (42.9%)	109 (50.7%)	185 (48.7%)	328 (47.0%)	162 (51.4%)	185 (45.1%)	1426 (48.3%)
Male	186 (49.9%)	158 (56.4%)	110 (52.4%)	128 (57.1%)	106 (49.3%)	195 (51.3%)	370 (53.0%)	153 (48.6%)	225 (54.9%)	1528 (51.7%)
<b>Birthweight</b>										
Mean (SD)	2910 (434)	2560 (967)	3550 (492)	3690 (367)	3070 (323)	2640 (506)	2660 (423)		2890 (448)	2970 (421)
<b>Maternal age</b>										
Mean (SD)	24.1 (4.11)					30.0 (3.99)	24.0 (5.09)	25.2 (6.21)	23.7 (3.68)	27.4 (7.16)
<b>Maternal weight</b>										
Mean (SD)										
<b>Maternal education (years)</b>										
Mean (SD)	5.43 (4.10)					0.873 (2.51)	2.48 (4.01)	4.07 (2.95)	5.06 (4.61)	
<b>Number of rooms</b>										
4+	14 (3.75%)				78 (36.3%)		323 (46.3%)		17 (4.17%)	
1	202 (54.2%)				44 (20.5%)		49 (7.02%)		185 (45.3%)	

	CMC-V-BCS- 2002, India	CMIN Bangladesh93	CMIN Peru89	CMIN Peru95	CONTENT, Peru	EE, Pakistan	GMS- Nepal	Guatemala BSC	IRC, India	Keneba, The Gambia
2	106 (28.4%)				54 (25.1%)		145 (20.8%)		170 (41.7%)	
3	51 (13.7%)				39 (18.1%)		181 (25.9%)		36 (8.82%)	
Number of children <5yrs										
1									89 (21.7%)	
2+									321 (78.3%)	
Improved sanitation										
1					201 (93.5%)					
0					14 (6.51%)					
Food security level										
Food Secure							479 (71.1%)			
Mildly Food Insecure							106 (15.7%)			
Food Insecure							89 (13.2%)			

762  
763

	MAL-ED, Bangladesh (N=265)	MAL-ED, Brazil (N=233)	MAL-ED, India (N=251)	MAL-ED, Nepal (N=240)	MAL-ED, Peru (N=303)	MAL-ED, South Africa (N=314)	MAL-ED, Tanzania (N=262)	PROVIDE, Bangladesh (N=700)	ResPak, Pakistan (N=284)	Tanzania Child2 (N=2400)	TDC, India (N=160)
Sex											
Female	136 (51.3%)	113 (48.5%)	138 (55.0%)	110 (45.8%)	143 (47.2%)	159 (50.6%)	133 (50.8%)	332 (47.4%)	136 (47.9%)	1184 (49.3%)	75 (46.9%)
Male	129 (48.7%)	120 (51.5%)	113 (45.0%)	130 (54.2%)	160 (52.8%)	155 (49.4%)	129 (49.2%)	368 (52.6%)	148 (52.1%)	1216 (50.7%)	85 (53.1%)
Birthweight											



	MAL-ED, Bangladesh	MAL-ED, Brazil	MAL-ED, India	MAL-ED, Nepal	MAL-ED, Peru	MAL-ED, South Africa	MAL-ED, Tanzania	PROVIDE, Bangladesh	ResPak, Pakistan	Tanzania Child2	TDC, India
Mean (SD)	2800 (412)	3340 (483)	2890 (442)	2980 (390)	3130 (430)	3130 (464)	3180 (452)	2780 (371)	2930 (525)	3230 (474)	2910 (450)
Maternal age											
Mean (SD)	24.8 (4.99)	24.8 (5.53)	23.9 (4.10)	26.4 (3.76)	24.2 (6.06)	26.4 (6.86)	28.4 (6.67)	24.7 (4.65)		26.4 (5.04)	
Maternal weight											
Mean (SD)	49.6 (8.54)	61.9 (11.8)	50.4 (9.37)	56.3 (8.27)	55.5 (8.95)	67.5 (14.9)	55.7 (9.11)	49.3 (9.41)		62.2 (11.7)	
Maternal education (years)											
Mean (SD)	5.63 (2.58)	9.18 (2.81)	7.88 (3.17)	8.77 (3.44)	7.81 (2.79)	10.3 (1.94)	6.17 (1.79)	4.33 (3.62)		7.90 (2.27)	
Number of rooms											
4+	12 (4.96%)	127 (60.5%)	25 (10.6%)	131 (55.5%)	139 (51.1%)	196 (76.3%)	108 (43.2%)	23 (3.29%)			5 (3.13%)
1	152 (62.8%)	4 (1.90%)	84 (35.7%)	52 (22.0%)	19 (6.99%)	14 (5.45%)	13 (5.20%)	507 (72.4%)			91 (56.9%)
2	50 (20.7%)	20 (9.52%)	78 (33.2%)	31 (13.1%)	52 (19.1%)	22 (8.56%)	63 (25.2%)	108 (15.4%)			49 (30.6%)
3	28 (11.6%)	59 (28.1%)	48 (20.4%)	22 (9.32%)	62 (22.8%)	25 (9.73%)	66 (26.4%)	62 (8.86%)			15 (9.38%)
Number of children <5yrs											
1								512 (73.1%)		1640 (68.6%)	
2+								188 (26.9%)		749 (31.4%)	
Improved sanitation											
1	204 (84.3%)	206 (98.1%)	108 (46.4%)	235 (99.6%)	65 (24.7%)	4 (1.60%)		58 (96.7%)			
0	38 (15.7%)	4 (1.90%)	125 (53.6%)	1 (0.424%)	198 (75.3%)	246 (98.4%)		2 (3.33%)			

	MAL-ED, Bangladesh	MAL-ED, Brazil	MAL-ED, India	MAL-ED, Nepal	MAL-ED, Peru	MAL-ED, South Africa	MAL-ED, Tanzania	PROVIDE, Bangladesh	ResPak, Pakistan	Tanzania Child2	TDC, India
Food security level											
Food Secure	161 (83.0%)	3 (2.33%)	190 (89.6%)	94 (73.4%)	27 (23.9%)	132 (56.7%)					
Mildly Food Insecure	4 (2.06%)	11 (8.53%)	5 (2.36%)	15 (11.7%)	29 (25.7%)	19 (8.15%)					
Food Insecure	29 (14.9%)	115 (89.1%)	17 (8.02%)	19 (14.8%)	57 (50.4%)	82 (35.2%)					

764

## 765 **Supplementary References**

- 766 1. McGrath, S., Zhao, X., Qin, Z. Z., Steele, R. & Benedetti, A. One-sample aggregate data meta-  
767 analysis of medians. *Stat. Med.* **38**, 969–984 (2019).
- 768 2. Iqbal, N. T. *et al.* Promising Biomarkers of Environmental Enteric Dysfunction: A Prospective Cohort  
769 study in Pakistani Children. *Sci. Rep.* **8**, 2966 (2018).
- 770 3. Ali, A. *et al.* Respiratory viruses associated with severe pneumonia in children under 2 years old in a  
771 rural community in Pakistan. *J. Med. Virol.* **88**, 1882–1890 (2016).
- 772 4. Shrestha, P. S. *et al.* Bhaktapur, Nepal: The MAL-ED Birth Cohort Study in Nepal. *Clin. Infect. Dis.*  
773 **59**, S300–S303 (2014).
- 774 5. Gladstone, B. P. *et al.* Protective Effect of Natural Rotavirus Infection in an Indian Birth Cohort. *N.*  
775 *Engl. J. Med.* **365**, 337–346 (2011).
- 776 6. John, S. M. *et al.* Establishment of the MAL-ED Birth Cohort Study Site in Vellore, Southern India.  
777 *Clin. Infect. Dis.* **59**, S295–S299 (2014).
- 778 7. Kattula, D. *et al.* The first 1000 days of life: prenatal and postnatal risk factors for morbidity and  
779 growth in a birth cohort in southern India. *BMJ Open* **4**, e005404 (2014).
- 780 8. Ahmed, T. *et al.* The MAL-ED Cohort Study in Mirpur, Bangladesh. *Clin. Infect. Dis.* **59**, S280–S286  
781 (2014).
- 782 9. Kirkpatrick, B. D. *et al.* The “Performance of Rotavirus and Oral Polio Vaccines in Developing  
783 Countries” (PROVIDE) Study: Description of Methods of an Interventional Study Designed to Explore  
784 Complex Biologic Problems. *Am. J. Trop. Med. Hyg.* **92**, 744–751 (2015).
- 785 10. Mduma, E. R. *et al.* The Etiology, Risk Factors, and Interactions of Enteric Infections and Malnutrition  
786 and the Consequences for Child Health and Development Study (MAL-ED): Description of the  
787 Tanzanian Site. *Clin. Infect. Dis.* **59**, S325–S330 (2014).
- 788 11. Locks, L. M. *et al.* Effect of zinc and multivitamin supplementation on the growth of Tanzanian  
789 children aged 6–84 wk: a randomized, placebo-controlled, double-blind trial<sup>12</sup>. *Am. J. Clin. Nutr.* **103**,  
790 910–918 (2016).
- 791 12. Bessong, P. O., Nyathi, E., Mahopo, T. C. & Netshandama, V. Development of the Dzimauli  
792 Community in Vhembe District, Limpopo Province of South Africa, for the MAL-ED Cohort Study.  
793 *Clin. Infect. Dis.* **59**, S317–S324 (2014).
- 794 13. Schoenbuchner, S. M. *et al.* The relationship between wasting and stunting: a retrospective cohort  
795 analysis of longitudinal data in Gambian children from 1976 to 2016. *Am. J. Clin. Nutr.*  
796 doi:10.1093/ajcn/nqy326.
- 797 14. Yori, P. P. *et al.* Santa Clara de Nanay: The MAL-ED Cohort in Peru. *Clin. Infect. Dis.* **59**, S310–S316  
798 (2014).
- 799 15. Jaganath, D. *et al.* First Detected *Helicobacter pylori* Infection in Infancy Modifies the Association  
800 Between Diarrheal Disease and Childhood Growth in Peru. *Helicobacter* **19**, 272–279 (2014).
- 801 16. Bégin, F., Santizo, M.-C., Peerson, J. M., Torún, B. & Brown, K. H. Effects of bovine serum  
802 concentrate, with or without supplemental micronutrients, on the growth, morbidity, and micronutrient  
803 status of young children in a low-income, peri-urban Guatemalan community. *Eur. J. Clin. Nutr.* **62**,  
804 39–50 (2008).
- 805 17. Lima, A. A. M. *et al.* Geography, Population, Demography, Socioeconomic, Anthropometry, and  
806 Environmental Status in the MAL-ED Cohort and Case-Control Study Sites in Fortaleza, Ceará,  
807 Brazil. *Clin. Infect. Dis.* **59**, S287–S294 (2014).

808

## 809 **Materials and Methods**

### 810 **Study designs and inclusion criteria**

811 We included all longitudinal observational studies and randomized trials available through the *ki* project  
812 on April 2018 that met five inclusion criteria (Extended Data Figure 1): 1) conducted in low- or middle-  
813 income countries; 2) enrolled children between birth and age 24 months and measured their length and

814 weight repeatedly over time; 3) did not restrict enrollment to acutely ill children; 4) enrolled at least 200  
815 children; 5) collected anthropometry measurements at least monthly. The frequency of measurements  
816 was assessed by calculating the median days between measurements. Our pre-specified analysis  
817 protocol stipulated that if randomized trials found effects of interventions on growth, the analysis would  
818 only include the control arm only; however, all interventional trials that met the inclusion criteria had  
819 null effects on growth, so all arms were included. We included all children under 24 months of age,  
820 assuming months were 30.4167 days. We excluded extreme measurements of  $WLZ > 5$  or  $< -5$  and of  
821  $WAZ < -6$  or  $> 5$ , consistent with 2006 WHO Growth Standards recommendations.<sup>1</sup> We checked for  
822 cohort-wide anthropometry measurement quality by plotting Z-score densities and calculating the  
823 proportion of length measurements where length decreased beyond the expected technical error of  
824 measurement compared to the last measurement on a child. One cohort, MAL-ED Pakistan, was  
825 excluded because measurements exhibited a multimodal WLZ distribution with scores binned at  $-2$ ,  $-$   
826  $1.5$ , and  $-1$  instead of continuously distributed. Some young infants with weight and height measured  
827 were missing WLZ, as WLZ cannot be calculated when child length is below 45cm (0.8% of  
828 measurements before age 1 month, with a mean WAZ for those children of  $-2.9 z$ , and 10.2% of children  
829 measured at birth), so using WLZ underestimates wasting at birth.<sup>2</sup>

830

### 831 **Outcome definitions**

832 We used the following outcome measures in the analysis:

833 Weight-for-Length Z-scores were calculated using the 2006 WHO growth standards,<sup>3</sup> and mean WLZ was  
834 calculated within strata of interest. We used the medians of triplicate measurements of lengths and  
835 weights of children from pre-2006 cohorts to re-calculate Z scores to the 2006 standard.

836 Prevalent wasting was defined as the proportion of measurements within a specific stratum (e.g., age)  
837 below the 2006 WHO standard  $-2$  WLZ and prevalent severe wasting was analogously below the 2006  
838 WHO standard  $-3$  WLZ. For each age, we included children with WLZ measurements within one month  
839 before and after that age in the point prevalence estimate (e.g., for point prevalence at 6 months, we  
840 include children aged 5-7 months).

841 Incident wasting episodes were defined as a change in WLZ from above  $-2$  Z in the prior measurement  
842 to below  $-2$  Z in the current measurement. Similarly, we defined severe wasting episodes using  $-3$  Z  
843 cutoff. We assumed a 60-day washout period between episodes of wasting before a new episode of  
844 wasting could occur (Fig 4a). Children were considered at risk for wasting at birth, so children born  
845 wasted were considered to have an incident episode of wasting at birth. Children were also assumed to  
846 be at risk of wasting at the first measurement in studies that enrolled children after birth; thus, children  
847 wasted at the first measurement in a non-birth cohort were assumed to have incident wasting occurring  
848 at the age halfway between birth and the first measurement.

849 Incidence proportion of wasting was calculated during a defined age range (i.e., 6-12 months) as the  
850 proportion of children not wasted at the start of the period who became wasted during the age period  
851 (the proportion of children who had the onset of new episodes during the period). This differs from  
852 period prevalence, which would include any children who had any measurement of  $WLZ < -2$  during the  
853 period (including children who began the period wasted). Period prevalence would thus additionally  
854 include in the numerator and denominator children who were wasted at the start of the period,  
855 whereas incidence proportion excludes them.

856 Recovery from wasting was defined as a WLZ change from below to above  $-2$  Z among children who are  
857 currently wasted or severely wasted. We required a child to maintain WLZ above  $-2$  for 60 days to be  
858 considered “recovered”. Children were only considered “at risk” for recovery if their prior measurement  
859 was below  $-2$  WLZ. We measured the proportion of children who recover from moderate wasting (WLZ

860 <-2) within 30, 60, and 90 days of the onset of the episode. We assumed recovery from wasting was  
861 spontaneous because we did not have consistent information on referral guidelines across cohorts in  
862 the analysis, but some children with moderate wasting may have been referred to clinical facilities for  
863 outpatient treatment. Wasting recovery may thus be higher in these highly monitored cohorts than in  
864 the general population due to treatment referrals.

865 Wasting duration was estimated by counting the days between the onset of wasting and recovery within  
866 an individual child. We assumed that the episode started or ended at the midpoint between  
867 measurements. For example, if a child was not wasted at age 40 days, wasted at age 70 days, and not  
868 wasted at age 100 days, the duration of the wasting episode was:  $(70-40)/2 + (100-70)/2 = 30$  days. We  
869 calculated the median duration of wasting episodes among cohorts where children recovered during the  
870 study period from >50% of observed wasting episodes, as the duration of episodes that extended  
871 beyond study period is unknown. Therefore, the median duration could only be calculated when less  
872 than half of episodes were censored.

873 Incidence rate of wasting was calculated during defined age ranges as the number of incident episodes  
874 of wasting per 1,000 child-days at risk during the age range. Children were considered “at risk” for  
875 incident wasting episodes if they were not currently wasted and were classified as recovered from any  
876 prior wasting episode (beyond the 60-day washout period). Therefore, wasted children, or children  
877 within the washout period, did not contribute to the person-time at risk for wasting used to calculate  
878 wasting incidence. To calculate person-time at risk of wasting, we assumed that the onset of a wasting  
879 episode occurred when the child’s age was at the midpoint between the measurement of  $WLZ \geq -2$  and  
880 the measurement of  $WLZ < -2$ , and conversely the time of recovery occurred when the child’s age was  
881 at the midpoint between the last measurement of  $WLZ < -2$  and the first measurement of  $WLZ \geq -2$   
882 within the 60-day washout period (Fig 4a).

883 Persistent wasting was defined as a >50% longitudinal prevalence of below  $-2$  WLZ (wasting), and  
884 analogously >50% longitudinal prevalence of below  $-3$  WLZ for persistent severe wasting.<sup>4</sup>

885 Concurrent prevalence of wasting and stunting was defined as the proportion of measurements at a  
886 specific age when a child was both wasted and stunted at the same measurement. For each age, we  
887 included children with WLZ and LAZ measurements within one month before and after that age in the  
888 point prevalence estimate (e.g., for point prevalence at 6 months, we include children aged 5-7 months).

889 Prevalent underweight was defined as the proportion of measurements at a specific age below the 2006  
890 WHO standard  $-2$  WAZ. For each age, we included children with WAZ measurements within one month  
891 before and after that age in the point prevalence estimate (e.g., for point prevalence at 6 months, we  
892 include children aged 5-7 months).

### 893 894 Subgroups of interest

895 We stratified the above outcomes of interest within the following subgroups: Child age, grouped into  
896 one-, three-, or six-month intervals, (depending on the outcome); the region of the world (Asia, sub-  
897 Saharan Africa, Latin America); the month of the year, and the combinations of the above categories.  
898 We also pooled wasting incidence proportion by categories of three country-level characteristics: the  
899 percentage of gross domestic product devoted to healthcare goods and spending (obtained from the  
900 United Nations Development Programme),<sup>5</sup> the percentage of the country living on less than \$1.90 US  
901 per day, and under-5 mortality rates (both obtained from the World Bank).<sup>6</sup> Within each country, in  
902 years without available data, we linearly interpolated values from the nearest years with available data  
903 and extrapolated values within 5 years of available data using linear regression models based on all  
904 available years of data.

905

## 906 **Statistical analysis**

907 All analyses were conducted in R version 4.0.5. Supplementary pooled, regional, and cohort-specific  
908 results, and sensitivity analyses are available in online supplements at ([https://child-](https://child-growth.github.io/wasting)  
909 [growth.github.io/wasting](https://child-growth.github.io/wasting)).

910

### 911 Fixed and random effects models

912 We conducted a 2-stage individual participant meta-analysis, estimating wasting outcomes within  
913 specific cohorts and pooling estimates within each age strata using random effects models. For example,  
914 we estimated each age-specific mean using a two-step process. We first estimated the mean in each  
915 cohort, and then pooled age-specific means across cohorts allowing for a cohort-level random effect.  
916 We estimated overall pooled effects, and pooled estimates specific to South Asian, African, or Latin  
917 American cohorts, depending on the analysis. We repeated the pooling of all statistics presented in the  
918 figures using fixed effects models as a sensitivity analysis ([https://child-growth.github.io/wasting/fixed-](https://child-growth.github.io/wasting/fixed-effects.html)  
919 [effects.html](https://child-growth.github.io/wasting/fixed-effects.html)). The pooling methods are described in greater detail in Benjamin-Chung (2020).<sup>7</sup> All  
920 pooling except for episode duration was completed using the `rma()` function from the “metafor”  
921 package in the R language (version 3.4.0).<sup>8</sup> Median durations were pooled across cohorts using the  
922 unweighted median of medians method (McGrath et al., 2019).<sup>9</sup>

923

### 924 Fitted spline curves

925 Fitted smoothers used in manuscript figures were fit using cubic splines and generalized cross-  
926 validation.<sup>10</sup> We estimated approximate 95% simultaneous confidence intervals around the cubic splines  
927 using a parametric bootstrap that resampled from the posterior the generalized additive model  
928 parameter variance-covariance matrix.<sup>11</sup>

### 929 Seasonality analysis

930 We compared mean WLZ over day of the year, over child birth day, and over seasons defined by rainfall.  
931 We estimated mean WLZ by cohort over day of the year and child birth day using cubic splines (Fig. 3a,  
932 c).<sup>12</sup> Splines of WLZ over day of the year were plotted over monthly mean rainfall averaged over the  
933 years a study measured child anthropometry below ages 24 months (Fig. 3a). We pulled monthly  
934 precipitation values from Terraclimate, a dataset that combines readings from WorldClim data, CRU  
935 Ts4.0, and the Japanese 55-year Reanalysis Project.<sup>13</sup> For each study region, we averaged all readings  
936 within a 50 km radius from the study coordinates. If GPS locations were not in the data for a cohort, we  
937 used the approximate location of the cohort based on the published descriptions of the cohort. Monthly  
938 measurements were matched to study data based on the calendar month and year in which  
939 measurements were taken.

940 The season of peak rainfall was defined as the three-month period with the highest mean  
941 rainfall. Mean differences in WLZ between three-month quarters was estimated using linear regression  
942 models. We compared the consecutive three months of the maximum average rainfall over the study  
943 period, as well as the three months prior and the three months after the maximum-rainfall period, to a  
944 reference level of the three months opposite the calendar year of the maximum-rainfall period. We  
945 used all WLZ measurements of children under two years of age (e.g., if June-August was the period of  
946 maximum rainfall, the reference level is child mean WLZ during January-March).

947 Estimates were unadjusted for other covariates because we assumed that seasonal effects on  
948 WLZ were exogenous and could not be confounded. Mean differences in WLZ were pooled across  
949 cohorts using random-effects models, with cohorts grouped by the Walsh and Lawler seasonality  
950 index.<sup>14</sup> Cohorts from years with a seasonal index  $\geq 0.9$  were classified as occurring in locations with high



951 seasonality, cohorts with a seasonal index  $<0.9$  and  $\geq 0.7$  were classified as occurring in locations with  
952 medium seasonality, and cohorts with a seasonal index  $<0.7$  were classified as occurring in locations  
953 with low seasonality.

954

955 
$$\text{Seasonal Index} = \frac{1}{R} \sum_{n=1}^{n=12} \left| X_n - \frac{R}{12} \right|$$

956 Where  $R$  = total annual precipitation and  $X_n$  = monthly precipitation.

957

## 958 Estimation of mean LAZ, WAZ, and WLZ by age in Demographic and Health Surveys and *ki* 959 cohorts

960 We downloaded standard DHS individual recode files for each country from the DHS program  
961 website (<https://dhsprogram.com/>). We used the most recent standard DHS datasets for the individual  
962 women's, household, and length and weight datasets from each country, and we estimated age-  
963 stratified mean LAZ, WAZ, and WLZ from ages 0 to 24 months within each DHS survey, accounting for  
964 the complex survey design and sampling weights. See Benjamin-Chung et. al (2020) for additional details  
965 on the DHS data cleaning and analysis.<sup>7</sup> We compared DHS estimates with mean LAZ, WAZ, and WLZ by  
966 age in the *ki* study cohorts with penalized cubic-splines with bandwidths chosen using generalized cross-  
967 validation.<sup>12</sup> We did not seasonally adjust DHS measurements.

968

## 969 Sensitivity analyses

970 We estimated incidence rates and of wasting after excluding children born or enrolled wasted (Fig. 4b).  
971 The rationale for this sensitivity analysis is that incident cases at birth imply a different type of  
972 intervention (i.e., prenatal) compared with postnatal onset of wasting. We estimated the overall and  
973 region stratified prevalence of persistent wasting and of underweight and severe wasting by age  
974 (Extended data fig. 5). Within cohorts that measured child gestational age at birth, we estimated the  
975 prevalence of stunting and underweight at birth both uncorrected and corrected for gestational age at  
976 birth using the Intergrowth standards (Extended data figure 6).<sup>15</sup> We also assessed how much change in  
977 Z-scores after children became wasted could be explained by regression to the mean (RTM) and how  
978 much is catch-up growth beyond that expected by RTM.<sup>16</sup> We calculated the cohort-specific RTM effect  
979 and plotted the mean Z-scores expected from RTM 3 months later among children who were wasted at  
980 each age in months from birth to 21 months. We used the cohort means as the population mean Z-  
981 scores, and compared the expected mean WLZ with the observed mean WLZ (Extended Data Fig. 8).<sup>17,18</sup>  
982 We also compared wasting prevalence defined using middle-upper-arm circumference (MUAC), an  
983 alternative measurement for classifying wasting, with wasting prevalence estimated using WLZ within  
984 the cohort that measured MUAC (<https://child-growth.github.io/wasting/muac.html>). We also re-  
985 estimate primary results dropping observations of children at birth within the MRC Keneba cohort,  
986 which used a different team to measure child anthropometry at birth from the trained anthropometrists  
987 used in follow-up measurements (<https://child-growth.github.io/wasting/no-kenaba.html>). We also  
988 examined the effect of shorter (30 day) and longer (90) day washout period when determining if a child  
989 was again at risk when estimating wasting incidence and wasting recovery rates ([https://child-  
990 growth.github.io/wasting/ir\\_sensitivity.html](https://child-growth.github.io/wasting/ir_sensitivity.html)). Lastly, we compared estimates pooled using random  
991 effects models, which are more conservative in the presence of study heterogeneity, with estimates  
992 pooled using fixed effects (inverse variance weighted) models ([https://child-  
993 growth.github.io/wasting/fixed-effects.html](https://child-growth.github.io/wasting/fixed-effects.html)).

994

995 **Data and code availability**

996 The data that support the findings of this study are available from the Bill and Melinda Gates Foundation  
997 Knowledge Integration project upon reasonable request. Replication scripts for this analysis are  
998 available here: <https://osf.io/9xyqv/>.

999

1000

1001 **Methods References**

1002 1. Organization, W. H. & Fund (UNICEF), U. N. C. *Recommendations for data collection, analysis and reporting on*

1003 *anthropometric indicators in children under 5 years old*. (World Health Organization, 2019).

1004 2. Randev, S. Malnutrition in Infants under 6 months: Is it Time to Change Recommendations? *Indian J. Pediatr.*

1005 **87**, 684–685 (2020).

1006 3. WHO Multicentre Growth Reference Study Group. WHO child growth standards: length/height-for-age,

1007 weight-for-age, weight-for-length, weight-for-height and body mass index-for-age: Methods and

1008 development. *Geneva World Health Organ.* 312 pages (2006).

1009 4. Richard, S. A. *et al.* Wasting Is Associated with Stunting in Early Childhood<sup>123</sup>. *J. Nutr.* **142**, 1291–1296 (2012).

1010 5. Home | Human Development Reports. <https://hdr.undp.org/>.

1011 6. World Development Indicators | DataBank. [https://databank.worldbank.org/source/world-development-](https://databank.worldbank.org/source/world-development-indicators)

1012 [indicators](https://databank.worldbank.org/source/world-development-indicators).

1013 7. Benjamin-Chung, J. *et. al.* (submitted). Early childhood linear growth faltering in low-and middle-income

1014 countries. (2020).

1015 8. Viechtbauer, W. Conducting Meta-Analyses in R with the metafor Package. *J. Stat. Softw.* **36**, 1–48 (2010).

1016 9. McGrath, S., Zhao, X., Qin, Z. Z., Steele, R. & Benedetti, A. One-sample aggregate data meta-analysis of

1017 medians. *Stat. Med.* **38**, 969–984 (2019).

1018 10. Cleveland, W. S. & Loader, C. Smoothing by Local Regression: Principles and Methods. in *Statistical Theory and*

1019 *Computational Aspects of Smoothing* (eds. Härdle, W. & Schimek, M. G.) 10–49 (Physica-Verlag HD, 1996).

1020 doi:10.1007/978-3-642-48425-4\_2.

1021 11. Ruppert, D., Wand, M. P. & Carroll, R. J. *Semiparametric Regression*. (Cambridge University Press, 2003).

- 1022 doi:10.1017/CBO9780511755453.
- 1023 12. Wood, S. N., Pya, N. & Säfken, B. Smoothing Parameter and Model Selection for General Smooth Models. *J.*
- 1024 *Am. Stat. Assoc.* **111**, 1548–1563 (2016).
- 1025 13. Abatzoglou, J. T., Dobrowski, S. Z., Parks, S. A. & Hegewisch, K. C. TerraClimate, a high-resolution global
- 1026 dataset of monthly climate and climatic water balance from 1958–2015. *Sci. Data* **5**, 170191 (2018).
- 1027 14. Walsh, R. P. D. & Lawler, D. M. Rainfall Seasonality: Description, Spatial Patterns and Change Through Time.
- 1028 *Weather* **36**, 201–208 (1981).
- 1029 15. Papageorghiou, A. T. *et al.* The INTERGROWTH-21st fetal growth standards: toward the global integration of
- 1030 pregnancy and pediatric care. *Am. J. Obstet. Gynecol.* **218**, S630–S640 (2018).
- 1031 16. Cameron, N., Preece, M. A. & Cole, T. J. Catch-up Growth or Regression to the Mean? Recovery from Stunting
- 1032 Revisited. *Am. J. Hum. Biol.* **17**, 412–417 (2005).
- 1033 17. Barnett, A. G., van der Pols, J. C. & Dobson, A. J. Regression to the mean: what it is and how to deal with it. *Int.*
- 1034 *J. Epidemiol.* **34**, 215–220 (2005).
- 1035 18. Linden, A. Assessing regression to the mean effects in health care initiatives. *BMC Med. Res. Methodol.* **13**,
- 1036 119 (2013).

1037

### 1038 Acknowledgments

1039 This research was financially supported by a global development grant (OPP1165144)

1040 from the Bill & Melinda Gates Foundation to the University of California, Berkeley, CA,

1041 USA. We would also like to thank the following collaborators on the included cohorts

1042 and trials for their contributions to study planning, data collection, and analysis:

1043 Muhammad Sharif, Sajjad Kerio, Ms. Urosa, Ms. Alveen, Shahneel Hussain, Vikas

1044 Paudel (Mother and Infant Research Activities), Anthony Costello (University College

1045 London), Benjamin Torun, Lindsey M Locks, Christine M McDonald, Roland Kupka,

1046 Ronald J Bosch, Rodrick Kisenge, Said Aboud, Molin Wang, and all other members of

1047 the study staffs and field teams. We would also like to thank all study participants and

1048 their families for their important contributions.

1049

### 1050 Author contributions

1051 Conceptualization: A.M., J.B., J.M.C., K.H.B., P.C., B.F.A

1052 Funding Acquisition: J.M.C., A.E.H., M.J.V., B.F.A.

1053 Data curation: A.M., J.B., J.C., O.S., W.C., A.N., N.N.P., W.J., E.J., E.O.C., S.D., N.H.,

1054 I.M., H.L., R.H., V.S., J.H., T.N.  
1055 Formal analyses: A.M., J.B., J.C., O.S., W.C., A.N., N.N.P., W.J., E.J., E.O.C., S.D.,  
1056 N.H., I.M., H.L., V.S., B.F.A  
1057 Methodology: A.M., J.B., J.M.C, J.C., O.S., N.H., I.M., A.E.H., M.J.V.,K.H.B., P.C.,  
1058 B.F.A.  
1059 Visualization: A.M.,J.B., A.N., N.N.P., S.D., A.S., J.C., R.H., E.J., K.H.B., P.C., B.F.A.  
1060 Writing – Original Draft Preparation: A.M., J.B., B.F.A.  
1061 Writing – Review & Editing: A.M., J.B., J.M.C., K.H.B., P.C., B.F.A., *ki* Child Growth  
1062 Consortium members

1063

#### 1064 Competing interest declaration

1065 Thea Norman is an employee of the Bill & Melinda Gates Foundation (BMGF). Kenneth  
1066 H Brown and Parul Christian are former employees of BMGF. Jeremy Coyle, Vishak  
1067 Subramoney, Ryan Hafen, and Jonas Häggström work as research contractors funded  
1068 by the BMGF.

1069

#### 1070 Additional information

1071 Supplementary Information is available for this paper at [https://child-](https://child-growth.github.io/wasting)  
1072 [growth.github.io/wasting](https://child-growth.github.io/wasting).

1073

1074 Correspondence and requests for materials should be addressed to Andrew Mertens  
1075 ([amertens@berkeley.edu](mailto:amertens@berkeley.edu)) and Benjamin F. Arnold ([ben.arnold@ucsf.edu](mailto:ben.arnold@ucsf.edu)).

1076