

1 **Kinetics of the humoral immune response to SARS-CoV-2: comparative analytical**
2 **performance of seven commercial serology tests**

3 Running head: evaluation of seven SARS-CoV-2 serology tests

4

5 Pauline H. Herroelen (MSc)¹, Geert A. Martens (MD, PhD)^{1,2,3}, Dieter De Smet (MD)¹,
6 Koen Swaerts (MSc)¹ and An-Sofie Decavele (MSc)¹

7

8 ¹ *AZ Delta Medical Laboratories, AZ Delta General Hospital, Roeselare, Belgium.*

9 ² *VUB Metabolomics platform, Brussels Free University, Belgium* ³ *Department of*
10 *Biomolecular Medicine, Ghent University, Belgium*

11

12

13

14 Corresponding author: Geert Martens, AZ Delta Medical Laboratories, AZ Delta General
15 Hospital, Deltalaan 1, 8800 Roeselare. Tel:+32 51 23 71 96. Email: geert.martens@azdelta.be

16 ORCID: 0000-0003-1208-6289

17

18

19 Word count body: 3003

20 Word count abstract: 247

21 Trial registrations: Clinical Trial Numbers IRB B1172020000009 and B1172020000006

22

23

24 Keywords: SARS-CoV-2, COVID-19, serology, antibody, paucisymptomatic

25

26 **Abstract**

27 **Background** SARS-CoV-2 serology tests are clinically useful to document a prior SARS-
28 CoV-2 infection in patients with no or inconclusive PCR results and suspected COVID-19
29 disease or sequelae. Data are urgently needed to select the assays with optimal sensitivity at
30 acceptable specificity.

31 **Methods** A comparative analysis of analytical sensitivity was performed of seven commercial
32 SARS-CoV-2 serology assays on 171 sera from 135 subjects with PCR-confirmed SARS-
33 CoV-2 infection, composed of 71 patients hospitalized for COVID-19 pneumonia and 64
34 healthcare workers with paucisymptomatic infections. The kinetics of IgA/IgM/IgG
35 seroconversion to viral N- and S-protein epitopes were studied from 0 to 54 days after
36 symptom onset. Specificity was verified on 57 pre-pandemic samples.

37 **Results** Wantai SARS-COV-2 Ab ELISA and Orient Gene COVID-19 IgG/IgM Rapid Test
38 achieved a superior overall sensitivity. Elecsys Anti-SARS-CoV-2 and EUROIMMUN Anti-
39 SARS-CoV-2 combined IgA/IgG also showed acceptable sensitivity (>95%) versus the
40 consensus result of all assays from 10 days post symptom onset. Optimal specificity (>98%)
41 was achieved only by Wantai SARS-COV-2 Ab ELISA, Elecsys Anti-SARS-CoV-2 assay
42 and Innovita 2019-nCoV Ab rapid test. LIAISON SARS-CoV-2 S1/S2 IgG showed a
43 significantly lower sensitivity as compared to all other assays. Lack of seroconversion by any
44 test was seen in 1.4% of hospitalized and 4.7% of paucisymptomatic infections. Within 10
45 days from symptom onset, only the Wantai SARS-COV-2 Ab ELISA showed acceptable
46 sensitivity.

47 **Conclusions** Wantai SARS-COV-2 Ab ELISA and Elecsys Anti-SARS-CoV-2 assays are
48 suitable for sensitive and specific screening of a SARS-CoV-2 infection from 10 days after
49 symptom onset.

50 **Introduction**

51 The gold standard for diagnosis of COVID-19 lung disease is nucleic acid amplification
52 testing of SARS-CoV-2 virus-specific sequences coding for the spike (S), envelope (E) and
53 nucleocapsid (N) proteins, the RNA dependent RNA polymerase (RdRp) gene and the Open
54 Reading Frame 1ab (ORF1ab) region (1). The diagnostic sensitivity of the most commonly
55 used technique, RT-PCR on nasopharyngeal swabs is currently unknown. When compared to
56 chest CT analysis of lesions characteristic for viral pneumonia, estimates vary from lower
57 than 70% to 90% (2,3) likely depending on COVID-19 disease stage, the intensity of viral
58 replication, sampling quality and analytical properties of the amplification assay. In addition,
59 insufficient PCR capacity during peak infection rate in overwhelmed healthcare systems left
60 many patients with milder clinically suspected SARS-CoV-2 infections as well as
61 asymptomatic infections untested.

62 Serology testing for COVID-19, defined as the detection of IgM, IgA or IgG antibodies to
63 SARS-CoV-2-specific epitopes, might represent an interesting complementary diagnostic tool
64 to document a past SARS-CoV-2 infection, both in individual patients with suspected
65 COVID-19 symptoms or late-stage complications who had no (conclusive) PCR test as at
66 population level to guide infection control policies. In addition, measuring SARS-CoV-2
67 antibodies might harbor prognostic value and convey information on protective immunity in
68 vaccination trials.

69 SARS-CoV-2 is an enveloped, single-stranded RNA betacoronavirus (β CoV), belonging to
70 the *Coronaviridae* family. All human coronaviruses share four major structural proteins:
71 envelope, membrane, nucleocapsid, and spike protein. SARS-CoV-2 shares a 80% overall
72 nucleotide homology with SARS-CoV (4–6). In SARS-CoV, the spike- and nucleocapsid
73 protein contain the highest density of B-cell epitopes (7,8) and in silico analysis indicated that
74 dominant B-cell epitopes share 69% to 100% homology to SARS-CoV-2. It was therefore a

75 logical choice of many commercial developers of diagnostic SARS-CoV-2 serology kits to
76 target the S and N proteins. In addition to their diagnostic value, antibodies to the S protein,
77 composed of a S1 subunit with the receptor binding domain (RBD) and a S2 subunit that
78 mediates membrane fusion for viral entry, appear additionally interesting because of their
79 proposed correlation with neutralizing antibodies and protective immunity to both SARS-CoV
80 (6) and, based on emerging data, also to SARS-CoV-2 (9,10).

81 Data on the kinetics of the humoral immune response to SARS-CoV-2 are rapidly emerging
82 but questions remain as to the relative diagnostic sensitivity of various commercial assays. In
83 this study we present a cross-platform comparison of seven commercially available SARS-
84 CoV-2 serology assays, targeting both N and S protein epitopes and different combinations of
85 antibody isotypes in PCR-confirmed COVID-19 patients both with critical and mild disease
86 course at various time points. To select assays suitable for screening the general population,
87 we used as working definition of acceptable performance a sensitivity > 95% versus the
88 consensus result of all tests also in mild SARS-CoV-2 infections from 10 days after onset of
89 symptoms and a minimal specificity of 98%.

90

91 **Methods**

92 *Patients* This is a diagnostic accuracy study on serum samples obtained from the following
93 cohorts: (i) Hospitalized COVID-19 patients: 105 serum samples obtained at different time
94 points from 71 patients with PCR-confirmed SARS-CoV-2 infection and admitted for severe
95 COVID-19 pneumonia from March 1 to April 27, 2020 at AZ Delta General Hospital in
96 Roeselare, Belgium; (ii) Paucisymptomatic SARS-CoV-2 infections: 66 serum samples from
97 64 healthcare workers with a SARS-CoV-2 infection, PCR-confirmed after developing fever
98 and World Health Organization (WHO)-listed COVID-19 symptoms. These patients were
99 home-quarantined without the need for hospitalization; (iii) Suspected SARS-CoV-2

100 infection: 84 serum samples from 84 healthcare workers from AZ Delta General Hospital,
101 Roeselare and Sint-Andries Hospital, Tielt who presented WHO-listed COVID-19 symptoms
102 but were not tested by PCR mainly due to restrictive national test indications at the time. The
103 study was approved by the AZ Delta ethical committee with a waiver of informed consent
104 from the hospitalized COVID-19 patients (Clinical Trial Number IRB B1172020000009) and
105 with written informed consent from participants with paucisymptomatic and suspected SARS-
106 CoV-2 infections (Clinical Trial Number B1172020000006).

107 The specificity was analyzed on a panel composed of 57 pre-pandemic serum samples
108 obtained from patients with PCR-confirmed infection by other HCoV respiratory viruses
109 (n=7), other pathogens and viruses (n=42) or presence of auto-immune antibodies (n=8)
110 (Supplementary data, supplementary table 1).

111

112 *SARS-CoV-2 serology assays*

113 All serology assays were used according to the manufacturers' protocol using the cutoffs
114 specified in the package inserts as detailed below.

115 *Rapid tests* The COVID-19 IgG/IgM Rapid Test (Zhejiang Orient Gene Biotech Co., Ltd.,
116 Zhejiang, China) is a solid phase immunochromatographic assay for the qualitative detection
117 of IgM and IgG antibodies to recombinant N- and S-proteins. The Innovita 2019-nCoV Ab
118 Test (Innovita Biological Technology Co., Ltd., Beijing, China) is a colloidal gold lateral flow
119 assay for the qualitative detection of IgM and IgG antibodies to undisclosed SARS-CoV-2
120 epitopes. Rapid tests were considered positive if a line was observed for either IgM, IgG or
121 both. The intensity of the color was not evaluated.

122 *Enzyme linked immunosorbent assays (ELISA)* The Wantai SARS-COV-2 Ab ELISA (Beijing
123 Wantai Biological Pharmacy Enterprise, Beijing, China) is a double-antigen sandwich
124 immunoassay for the qualitative detection of all antibody isotypes (IgM, IgA, IgG) against the

125 RBD domain of the S1 protein. Samples with a cutoff ratio (OD/CO with cutoff = mean of
126 three blanks + 0.16) higher than 0.9 were considered positive, classifying gray zone results
127 0.9-1.1 as positive. Three indirect ELISAs from EUROIMMUN AG (a PerkinElmer
128 Company, Luebeck, Germany) were tested: the Anti-SARS-CoV-2 IgG and IgA assays for
129 semiquantitative detection of IgA and IgG antibodies against the S1 protein and Anti-SARS-
130 CoV-2-NCP(IgG) assay for semiquantitative detection of IgG to the N protein. (cutoff = 0.8
131 units, classifying gray zone results 0.8-1.1 units as positive). All ELISAs were tested using
132 the PhD™ system (Version EIA 0_16, Bio-Rad Laboratories, Inc., Hercules, California).

133

134 *Electrochemiluminescence immunoassays (CLIA)* The Elecsys Anti-SARS-CoV-2 assay for
135 Cobas e601 module (Roche Diagnostics, Basel, Switzerland) is a double-antigen sandwich
136 assay for the qualitative detection of all antibody isotypes (IgM, IgA, IgG) against the N
137 protein (cutoff = 1 Cutoff Index) LIAISON SARS-CoV-2 S1/S2 IgG (DiaSorin, Saluggia,
138 Italy) is an indirect CLIA for the quantitative detection of IgG antibodies against S1/S2
139 proteins (cutoff = 12 AU/mL, classifying gray zone results between 12 and 15 AU/mL as
140 positive).

141

142 *SARS-CoV-2 PCR* was done using the Allplex™ 2019-nCoV assay (Seegene, Seoul, Korea)
143 for E/N/RdRP genes on nasopharyngeal swab.

144

145 *Statistical analysis*

146 Statistical analyses were performed using MedCalc (version 12.2.1, Belgium). The sensitivity
147 of serology tests was evaluated on samples obtained from SARS-CoV-2 PCR-positive
148 patients as (i) total fraction of samples showing detectable antibodies and (ii) by comparing
149 each individual assay versus the consensus outcome obtained by the majority of all assays

150 evaluated in this study. Diagnostic test (2x2) was used for calculation of sensitivity and
151 specificity. Chi-squared (χ^2) test was used for comparing proportions for categorical
152 variables. Not-normally quantitative variables are expressed as medians (IQR) and Mann-
153 Whitney test was used to test statistical differences between various timeframes after
154 symptom onset. Differences were considered statistically significant if P-value was <0.05.
155 Kinetics of seroconversion in individual patients in Fig. 1 were fitted to a scale from -1 to +1
156 with 0 representing each assays cutoff by subtracting each assay's cutoff from its raw data
157 signals, and dividing its absolute value by the highest (lowest) cutoff-corrected signal for that
158 assay obtained in our data set for positive (negative) samples. Figure 2 was created in Python
159 3.7.7. The packages numpy (1.18.4), pandas (1.0.3) and matplotlib (3.2.1) were used to
160 process the data and generate the plot. The labels were optimized using LaTeX (3.14159265-
161 2.6-1.40.20).

162

163 **Results**

164 *Analytical specificity*

165 The specificity was evaluated on 57 pre-pandemic samples from individuals infected with
166 other HCoV viruses (229E/HKU1/OC43), other infectious agents or with positivity to anti-
167 nuclear factor or rheumatoid factor (detailed in Supplementary Table 1). The Wantai SARS-
168 COV-2 Ab ELISA, Elecsys Anti-SARS-CoV-2 assay, EUROIMMUN Anti-SARS-CoV-2
169 IgG and Innovita 2019-nCoV Ab Test all achieved 100% specificity (Table 1). The
170 EUROIMMUN Anti-SARS-CoV-2 IgA and Orient Gene COVID-19 IgG/IgM Rapid Test
171 showed the lowest specificity (91.1% and 92.9% respectively) and were the only to cross-
172 react with common cold HCoV viruses. LIAISON SARS-CoV-2 S1/S2 IgG (96.4%
173 specificity) was the only to show interference by rheumatoid factor (Supplementary table 1).

174

175 *Analytical sensitivity*

176 *Study participants* Analytical sensitivities were compared on 171 samples obtained from 135
177 subjects, all with PCR-confirmed SARS-CoV-2 infections, pooled or grouped in two distinct
178 cohorts: hospitalized and paucisymptomatic COVID-19 patients. *Hospitalized patients*
179 included 105 samples from 71 patients who were hospitalized for severe COVID-19 disease,
180 all with a very high level of suspicion of COVID-19 pneumonia on chest CT (CO-RADS
181 score =5) (11): 48 males (median age 65 years, IQR 53-80) and 23 females (median age 79
182 years, IQR 67-86). Serum samples ranged from 0 to 39 days after patient-reported symptom
183 onset. *Paucisymptomatic patients*: 66 samples from 64 healthcare workers with mild (n=61)
184 or no (n=3) WHO-listed COVID-19 symptoms: myalgia (present in 62.5%), fever (60.9%),
185 dry cough (56.2%), dyspnea (40.6%), severe fatigue (35.9%), headaches (30.0%), loss of
186 smell or taste (26.6%) or diarrhea (18.8%). None of these patients were hospitalized. Serum
187 samples ranged from 11 to 54 days after patient-reported symptom onset.

188

189 *Analytical sensitivity* was evaluated in two ways, in all samples pooled and separately for the
190 hospitalized and paucisymptomatic patients. First, versus SARS-CoV-2 PCR (100% of
191 samples from PCR+ patients) as reference, by measuring the percentage of samples showing
192 antibody titers above the respective assay's cutoff (Table 1). Second, by comparing each
193 individual assay to the consensus outcome of the majority of seven tested assays (Table 2).
194 The results were congruent. The Wantai SARS-COV-2 Ab ELISA showed the highest overall
195 sensitivity: 86.4% (95%CI 80.3-91.2) versus PCR and 100% (95%CI 97.3-100) versus the
196 consensus result at all time points in in both patient cohorts. Its sensitivity was significantly
197 higher ($P<0.05$) than all other assays with exception of the Orient Gene COVID-19 IgG/IgM
198 Rapid Test and the EUROIMMUN Anti-SARS-CoV-2 IgG and IgA combined. In a real-
199 world clinical setting, serology assays will be mostly used at later time stages e.g. more than

200 20 days after symptom onset or to document past SARS-CoV-2 infection in
201 paucisymptomatic patients: in these patients four assays show clinically acceptable sensitivity
202 above 95% versus the consensus result (Table 2): Wantai SARS-COV-2 Ab ELISA, Elecsys
203 Anti-SARS-CoV-2 assay, EUROIMMUN Anti-SARS-CoV-2 IgG and IgA combined and
204 Orient Gene COVID-19 IgG/IgM Rapid Test. The LIAISON SARS-CoV-2 S1/S2 IgG
205 showed a significantly ($P<0.05$) lower sensitivity compared to all other assays: with a
206 sensitivity versus consensus (Table 2) of 83.6% (95%CI 72.5-91.5) at > 20 days post
207 symptom onset and of 84.2% (95%CI 72.1-92.5) in paucisymptomatic patients, performance
208 is suboptimal. Also, the EUROIMMUN Anti-SARS-CoV-2-NCP(IgG) and Innovita 2019-
209 nCoV Ab Test suffered from limited sensitivity.

210

211 *Kinetics of seroconversion* We directly compared the kinetics of seroconversion of the
212 ELISA/CLIA assays on consecutive blood samples of 8 patients admitted to intensive care
213 units (Figure 1): in all 8 patients, the RBD-targeting Wantai SARS-COV-2 Ab ELISA was
214 the first to detect seroconversion, followed by the S1-targeting EUROIMMUN Anti-SARS-
215 CoV-2 IgA. Of the N-targeting assays, the EUROIMMUN Anti-SARS-CoV-2-NCP(IgG)
216 detected seroconversion more rapidly than the Elecsys Anti-SARS-CoV-2 assay. The
217 LIAISON SARS-CoV-2 S1/S2 IgG typically was the last to detect seroconversion. The
218 kinetics were additionally studied by a pooled analysis in samples from different patients,
219 grouped according to the timeframe after symptom onset ranging from < 10 days, 10 to 20
220 days or more than 20 days post onset of symptoms (dpos) (Table 1-2). All tests except Wantai
221 SARS-COV-2 Ab ELISA showed a significantly higher positivity rate between 10 and 20
222 dpos as compared to less than 10 dpos ($P<0.05$). No significant differences were observed in
223 positivity rates between 10 and 20 and more than 20 dpos (Table 1) indicating that serology
224 testing can be performed starting from 10 days after symptom onset. In samples less than 10

225 days after symptom onset, all from hospitalized patients, the Wantai SARS-COV-2 Ab
226 ELISA outperformed all other assays, with a sensitivity of 75.5% (95%CI 61.7-86.2) versus
227 PCR and 100% (95%CI 88.1-100) versus consensus that was however significantly lower
228 than its performance in samples > 20 days dpos (P<0.05).

229

230 *Concordance analysis of humoral immune response on individual samples* We visually
231 plotted the concordance of presence or absence of antibodies to RBD/S1/S2/N proteins across
232 the various assays in all samples and grouped according to disease severity as function of time
233 post symptom onset (Figure 2). For the assays with acceptable overall sensitivity > 95%
234 (Wantai SARS-COV-2 Ab ELISA, Elecsys Anti-SARS-CoV-2 assay, EUROIMMUN Anti-
235 SARS-CoV-2 IgG and IgA combined and Orient Gene COVID-19 IgG/IgM Rapid Test) a
236 good overall concordance was seen in samples > 10 dpos, with 87.7% and 3.5% of samples
237 positive or negative respectively with all four methods. No clear differences were observed in
238 the kinetics of appearance of antibodies to S or N epitopes. Beyond 10 days, only 1.4% (1/71)
239 of hospitalized and 4.7% (3/64) paucisymptomatic patients developed no antibodies.

240

241 *Screening of healthcare workers with suspected SARS-CoV-2 infection* Finally we selected the
242 most performant serology test (Wantai SARS-COV-2 Ab ELISA) to screen a cohort of 84
243 healthcare workers who failed to obtain a PCR test during peak infection but retrospectively
244 self-reported following COVID-19 symptoms: myalgia (present in 23.8%), fever (21.4%), dry
245 cough (29.8%), dyspnea (20.2%), severe fatigue (14.3%), headaches (5.6%), loss of smell or
246 taste (9.5%) or diarrhea (14.3%): 26.2% showed detectable antibodies as compared to national
247 survey data of 8.4% in unselected healthcare workers and 4.3% in the healthy blood donors at
248 in the same timeframe (Sciensano, Belgian serosurveillance data, sampling from May 6-10,
249 2020).

250

251 **Discussion**

252 In this study we report on the performance characteristics of seven commercially available
253 serology tests for detection of antibodies against the SARS-CoV-2 S protein (S-RBD total
254 antibodies, S1/S2 IgG, S1 IgA and IgG), the N protein (N total antibodies, N IgG), and both
255 proteins (N/S IgM and IgG). This study is the first to report performance of Elecsys Anti-
256 SARS-CoV-2 assay on the Cobas e601 module. We specifically investigated their relative
257 value as a complementary diagnostic tool to screen for prior SARS-CoV-2 infection in
258 individuals that were not (conclusively) tested by PCR in early stage of active viral replication
259 up to 10 days after onset of symptoms. As working definition for acceptable performance, we
260 propose that such assay should combine a minimal sensitivity of 95% versus a consensus
261 estimate and a high specificity above 98% in samples taken 20 days or more after symptom
262 onset, also in subjects who experienced mild SARS-CoV-2 symptoms. Based on these
263 criteria, the Wantai SARS-COV-2 Ab ELISA, the Elecsys Anti-SARS-CoV-2 assay and the
264 Innovita 2019-nCoV Ab Test all showed acceptable specificity. In terms of sensitivity versus
265 the consensus result obtained by all tests, the Wantai SARS-COV-2 Ab ELISA, the Elecsys
266 Anti-SARS-CoV-2 assay the EUROIMMUN Anti-SARS-CoV-2 IgG combined with IgA and
267 the Orient Gene COVID-19 IgG/IgM Rapid Test are acceptable. Overall, only the Wantai
268 SARS-COV-2 Ab ELISA and the Elecsys Anti-SARS-CoV-2 assay reached the proposed
269 acceptance criteria, with the Wantai SARS-COV-2 Ab ELISA clearly outperforming all other
270 evaluated assays.

271 A strength of our study is that the parallel evaluation of several kits allowed a reliable direct
272 comparison of diagnostic performance using the cutoffs provided by the manufacturers. Also,
273 our patient cohorts, including not only severe COVID-19 patients but also a sizeable cohort of
274 mild SARS-CoV-2 infections provides a good estimate on the assays' performances in the

275 intended target population. We observed no notable differences in the rate of seroconversion
276 between severe and milder SARS-CoV-2 infections, nor in its timing.

277 The limitations of our study are that the specificity analysis requires further extension,
278 particularly with time series analyzing false positive seroconversion triggered by other HCoV
279 (229E/HKU1/OC43/NL63) during the common cold season, and that our study did not
280 include a sizeable cohort of fully asymptomatic SARS-CoV-2 infections. Our study also
281 focused on qualitative analysis and did not investigate differences in assays' performance for
282 quantification of antibody titers. In critically ill COVID-19 patients, SARS-CoV-2 antibody
283 levels were reported to correlate to disease severity (4) by triggering bradykinin and
284 complement activation pathways. The assays evaluated here show large variations in their
285 dynamic range (raw data in Supplementary Information), ranging from a good linearity for the
286 LIAISON SARS-CoV-2 S1/S2 IgG (12) to a limited dynamic range with rapid signal
287 saturation for the most sensitive: with a sample volume input of 100 μ L that is 10-20 times
288 higher than the other evaluated assays, the Wantai SARS-COV-2 Ab ELISA is clearly
289 designed towards high sensitivity by maximal antibody capture. Caution is thus warranted
290 when comparing (semi)quantitative estimates of antibody titers across platforms before
291 certified standards with known titers become available.

292 Our data are compatible with other cross-platform evaluations (13) indicating superior
293 performance of the Wantai SARS-COV-2 Ab ELISA as compared to EUROIMMUN Anti-
294 SARS-CoV-2 IgG and IgA. Our data are, however, discrepant with another study reporting a
295 sensitivity of 100% and 99% specificity for the LIAISON SARS-CoV-2 S1/S2 IgG (12),
296 obtained on a small set of 125 samples including only 40 PCR-confirmed patients and after
297 ROC-optimization of assay cutoffs. Since we observed considerable lot-to-lot variations in the
298 raw signals of the two LIAISON SARS-CoV-2 S1/S2 IgG kits tested, we feel that caution is

299 warranted and cutoffs should only be optimized on better powered data sets and proper
300 assessment of different lots.

301 It was reported that antibodies against S protein appear later in infection than antibodies
302 against the N protein (4,7). We also observed faster seroconversion of N- versus S1-targeting
303 IgG in the EUROIMMUN assays. On the other hand, we also observed a much faster
304 seroconversion of total antibodies (IgA/IgM/IgG) to S-RBD (Wantai) than N-protein
305 (Elecsys). Within the same epitope/assay format (EUROIMMUN to S1), IgA antibodies
306 clearly precede IgG. IgM does not precede IgG as evident from both rapid tests. Overall, our
307 data suggest that speed of seroconversion depends more on assay design, recombinant viral
308 epitope and antibody isotypes covered, and that overall sensitivity is likely enhanced when
309 both IgA and IgG isotypes are measured.

310 In conclusion, our study supports the clinical use of both Wantai SARS-COV-2 Ab ELISA
311 and Elecsys Anti-SARS-CoV-2 assay for sensitive and specific screening of SARS-CoV-2
312 antibodies from 10 days after symptom onset. Within 10 days after symptom onset, only
313 Wantai SARS-COV-2 Ab ELISA achieves medically relevant diagnostic power.

314

315 **Author statements on competing interests and funding**

316 The authors declare no conflict of interest. This work was supported by a private donation by
317 board members of Fagron (Nazareth, Belgium), a healthcare company, to RADar, the
318 teaching and education initiative of AZ Delta General Hospital, to be used as unconditional
319 research grant for data collection, collaborative collaboration and open access publication.

320 The sponsor had no influence on the study design, data interpretation and drafting of the
321 manuscript.

322

323 **Author contribution statement and data sharing statement**

324 Study design: GM, ASDC, DDS, PH. Statistical data analysis: PH, ASDC, DDS. Data
325 interpretation: PH, GM, ASDC, DDS. Data visualization: KH. Data collection: PH, ASDC.
326 Manuscript preparation, lead: PH, GM, ASDC. Manuscript, supportive: KH, DDS. GM is
327 guarantor of the study. Source data discussed in the paper are available on email request to the
328 guarantor of this study.
329
330

331 **References**

- 332 1. Bohn MK, Lippi G, Horvath A, Sethi S, Koch D, Ferrari M, et al. Molecular,
333 serological, and biochemical diagnosis and monitoring of COVID-19: IFCC taskforce
334 evaluation of the latest evidence. *Clin Chem Lab Med* [Internet]. 2020; Available from:
335 <https://doi.org/10.1515/cclm-2020-0722>
- 336 2. Ai T, Yang Z, Hou H, Zhan C, Chen C, Lv W, et al. Correlation of Chest CT and RT-
337 PCR Testing in Coronavirus Disease 2019 (COVID-19) in China: A Report of 1014
338 Cases Tao. *Radiology* [Internet]. 2020; Available from:
339 <https://doi.org/10.1148/radiol.2020200642>
- 340 3. De Smet K, De Smet D, Demedts I, Bouckaert B, Ryckaert T, Laridon E, et al.
341 Diagnostic power of chest CT for COVID-19: to screen or not to screen. Available
342 from: <https://doi.org/10.1101/2020.05.18.20097444>
- 343 4. Grzelak L, Temmam S, Planchais C, Demeret C, Huon C, Guivel F, et al. SARS-CoV-
344 2 serological analysis of COVID-19 hospitalized patients, pauci-symptomatic
345 individuals and blood donors. Available from:
346 <https://doi.org/10.1101/2020.04.21.20068858>
- 347 5. Chan JFW, Kok KH, Zhu Z, Chu H, To KKW, Yuan S, et al. Genomic characterization
348 of the 2019 novel human-pathogenic coronavirus isolated from a patient with atypical
349 pneumonia after visiting Wuhan. *Emerg Microbes Infect.* 2020;9(1):221–36.
- 350 6. Hachim A, Kavian N, Cohen CA, Chin AW, Chu DK, Mok CK, et al. Beyond the
351 Spike: identification of viral targets of the antibody responses to SARS-CoV-2 in
352 COVID-19 patients. 2020; Available from:
353 <https://doi.org/10.1101/2020.04.30.20085670>
- 354 7. Meyer B, Drosten C, Müller MA. Serological assays for emerging coronaviruses:
355 Challenges and pitfalls. *Virus Res* [Internet]. 2014;194:175–83. Available from:

- 356 <http://dx.doi.org/10.1016/j.virusres.2014.03.018>
- 357 8. Grifoni A, Sidney J, Zhang Y, Scheuermann RH, Peters B, Sette A. A Sequence
358 Homology and Bioinformatic Approach Can Predict Candidate Targets for Immune
359 Responses to SARS-CoV-2. *Cell Host Microbe* [Internet]. 2020;27:671–80. Available
360 from: <https://doi.org/10.1016/j.chom.2020.03.002>
- 361 9. GeurtsvanKessel CH, Okba NMA, Igloi Z, Embregts CWE, Laksono BM, Leijten L, et
362 al. Towards the next phase: evaluation of serological assays for diagnostics and
363 exposure assessment. Available from: [oi.org/10.1101/2020.04.23.20077156](https://doi.org/10.1101/2020.04.23.20077156)
- 364 10. Okba NMA, Müller MA, Li W, Wang C, GeurtsvanKessel CH, Corman VM, et al.
365 Severe Acute Respiratory Syndrome Coronavirus 2–Specific Antibody Responses in
366 Coronavirus Disease 2019 Patients. *Emerg Infect Dis J* [Internet]. 2020;26(7).
367 Available from: https://wwwnc.cdc.gov/eid/article/26/7/20-0841_article
- 368 11. Prokop M, van Everdingen W, van Rees Vellinga T, Quarles van Ufford J, Stöger L,
369 Beenen L, et al. CO-RADS – A categorical CT assessment scheme for patients with
370 suspected COVID-19: definition and evaluation. *Radiology* [Internet]. 2020;(1).
371 Available from: <https://doi.org/10.1148/radiol.2020201473>
- 372 12. Tré-hardy M, Wilmet A, Beukinga I, Dogné J, Douxfils J. Validation of a
373 chemiluminescent assay for specific SARS-CoV-2 antibody. *Clin Chem Lab Med*
374 [Internet]. 2020;5298. Available from: <https://doi.org/10.1515/cclm-2020-0594>
- 375 13. Lassaunière R, Frische A, Harboe ZB, Nielsen AC, Fomsgaard A, Krogfelt KA, et al.
376 Evaluation of nine commercial SARS-CoV-2 immunoassays. Available from:
377 <https://doi.org/10.1101/2020.04.09.20056325>
- 378
- 379

380 **Figure legends**

381 **Figure 1. Kinetics of seroconversion in critically ill COVID-19 patients.** The upper left
382 panel shows the average kinetics of seroconversion in 13 intensive care unit patients. The
383 other panels show the kinetics in 8 individual patients for whom 3 or more data points were
384 available. Graphs represent for each of the indicated serology tests the normalized signal over
385 time, fitted to a scale from -1 to +1 with 0 (black line) representing the assays' cutoff as
386 described in Statistical Analysis.

387

388 **Figure 2. Heatmap of humoral immune response to SARS-CoV-2 in individual samples.**

389 Visualization of the concordance of presence or absence of antibodies to RBD/S1/S2/N
390 proteins across the various assays in all samples and grouped according to disease severity as
391 a function of the indicated number of days after symptom onset (top, X-axis). Orange boxes
392 indicate a positive result of the indicated assay, gray boxes are negative results and white
393 boxes were not measured (sample exhausted). From top to bottom: total antibodies to S-RBD
394 (Wantai SARS-COV-2 Ab ELISA), IgA to S1 (EI, EUROIMMUN Anti-SARS-CoV-2 IgA),
395 IgG to S1 (EI, EUROIMMUN Anti-SARS-CoV-2 IgG), IgG to S1/S2 (Diasorin, LIAISON
396 SARS-CoV-2 S1/S2 IgG), total antibodies to N (Roche, Elecsys Anti-SARS-CoV-2 assay),
397 IgG to N (EI, EUROIMMUN Anti-SARS-CoV-2-NCP(IgG)), IgM and IgG to N/S (Orient
398 Gene COVID-19 IgG/IgM Rapid Test), IgM and IgG to undisclosed epitope (Innovita 2019-
399 nCoV Ab rapid test). The heatmap was created in Python 3.7.7.

400

401

402

403

404 **Table legends**

405 **Table 1. Performance characteristics of serology kits versus the result of PCR**

406 Sensitivities (SN) were expressed as percentage of samples showing detectable antibodies
407 with the indicated serology test, assuming seroconversion in all patients with patients with
408 PCR-confirmed SARS-CoV-2 infection. The table shows sensitivity separately in the
409 hospitalized and paucisymptomatic cohorts and both combined (overall). Data were
410 additionally categorized in three timeframes: less than 10 days post onset of symptoms (dpos),
411 between 10 and 20 dpos and more than 20 dpos. Specificities (SP) were measured on pre-
412 pandemic samples. Medcalc's (version 12.2.1, Belgium) diagnostic test (2x2) was used for
413 calculation of sensitivity, specificity, positive predictive value (PPV) and negative predictive
414 value (NPV). Proportions for categorical variables were compared using χ^2 test. † Indicates
415 differences with the Wantai SARS-COV-2 Ab ELISA for which P values less than .05 were
416 considered statistically significant.

417

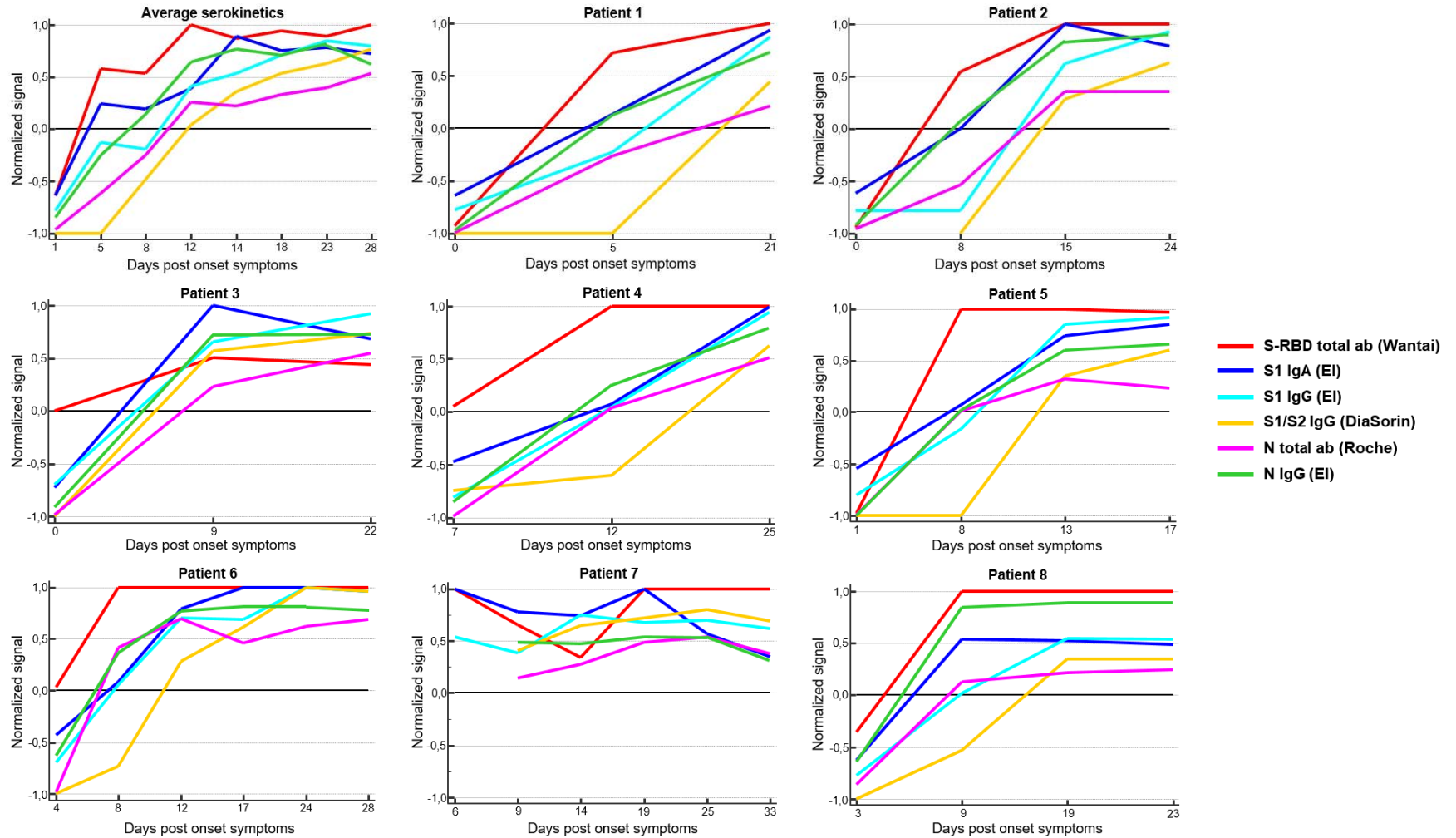
418 **Table 2. Performance characteristics of serology kits versus the consensus result of all**

419 **assays.** The outcome of the serology tests was compared to the consensus result obtained by
420 the majority of the evaluated assays. Overall sensitivity (SN) was assessed by combining
421 hospitalized and paucisymptomatic cohorts. Data were categorized in three timeframes, in less
422 than 10 days post onset of symptoms (dpos), between 10 and 20 dpos and more than 20 dpos.
423 Medcalc's (version 12.2.1, Belgium) diagnostic test (2x2) was used for calculation of
424 sensitivity. Proportions for categorical variables were compared using χ^2 test. † Indicates
425 differences with the Wantai SARS-COV-2 Ab ELISA for which P values less than .05 were
426 considered statistically significant.

427

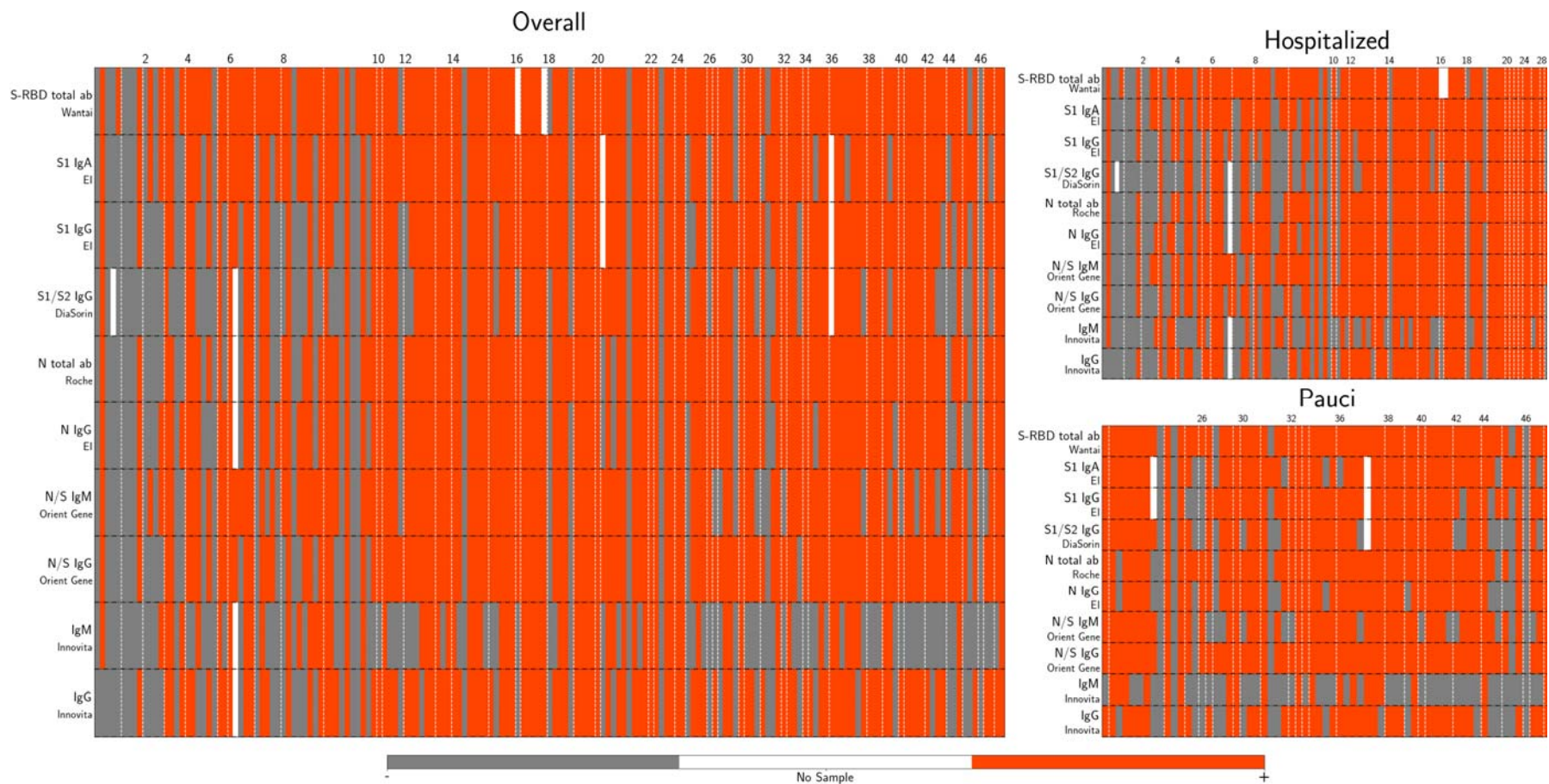
428

429 **Figure 1. Kinetics of seroconversion in critically ill COVID-19 patients**



430

431 **Figure 2. Heatmap of humoral immune response to SARS-CoV-2 in individual samples**



432

433 **Table 1. Performance characteristics of serology kits versus the result of PCR**

			S-RBD total ab (Wantai)	S1 IgA (EI)	S1 IgG (EI)	S1 IgA + IgG (EI)	S1/S2 IgG (DiaSorin)	N total ab (Roche)	N IgG (EI)	N/S IgM (Orient Gene)	N/S IgG (Orient Gene)	N/S IgM + IgG (Orient Gene)	IgM (Innovita)	IgG (Innovita)	IgM + IgG (Innovita)
	SP	n/N % 95% CI	57/57 100 93.7-100	51/56 91.1 [†] 80.4-97.0	56/56 100 93.6-100	51/56 91.1 [†] 80.4-97.0	54/56 96.4 87.7-99.6	56/56 100 93.6-100	55/56 98.2 90.4-99.9	55/56 98.2 90.4-99.9	53/56 94.6 85.1-98.9	52/56 92.9 [†] 82.7-98.0	56/56 100 93.6-100	56/56 100 93.6-100	56/56 100 93.6-100
Overall	SN	n/N % 95% CI	146/169 86.4 80.3-91.2	134/169 79.3 72.4-85.1	122/169 72.2 [†] 64.8-78.8	141/169 83.4 77.0-88.7	106/168 63.1 [†] 55.3-70.4	132/170 77.6 [†] 70.6-83.7	128/170 75.3 [†] 68.1-81.6	128/171 74.8 [†] 67.7-81.2	134/171 78.4 71.4-84.3	143/171 83.6 77.2-88.8	72/170 42.4 [†] 34.8-50.2	113/170 66.5 [†] 58.8-73.5	121/170 71.2 [†] 63.7-77.8
	PPV	% 95% CI	100 97.5-100	96.4 91.8-98.8	100 97.0-100	96.6 92.2-98.9	98.2 93.5-99.8	100 97.2-100	99.2 95.8-99.9	99.2 95.8-99.9	97.8 93.7-99.6	97.3 93.2-99.2	100 95.0-100	100 96.8-100	100 97.0-100
	NPV	% 95% CI	71.2 60.0-80.8	59.3 48.2-69.8	54.4 44.3-64.2	64.6 53.0-75.0	46.6 37.2-56.0	59.6 49.0-69.6	56.7 46.2-66.7	56.1 45.7-66.1	58.9 48.0-69.2	65.0 53.5-75.3	36.4 28.8-44.5	49.6 40.0-59.1	53.3 43.3-63.1
<10 dpos	SN	n/N % 95% CI	40/53 75.5 61.7-86.2	32/53 60.4 46.0-73.6	22/53 41.5 [†] 28.1-55.9	32/53 60.4 46.0-73.6	16/51 31.4 [†] 19.1-45.9	26/52 50.0 [†] 35.8-64.2	29/52 55.8 [†] 41.3-69.5	33/53 62.3 47.9-75.2	26/53 49.1 [†] 35.1-63.2	34/53 64.2 49.8-76.9	20/52 38.5 [†] 25.3-53.0	23/52 44.2 [†] 30.5-58.7	28/52 53.8 [†] 39.5-67.8
10-20 dpos	SN	n/N % 95% CI	36/40 90.0 76.3-97.2	40/42 95.2 83.8-99.4	37/42 88.1 74.4-96.0	40/42 95.2 83.8-99.4	34/42 81.0 65.9-91.4	39/42 92.9 80.5-98.5	38/42 90.5 77.4-97.3	38/42 90.5 77.4-97.3	39/42 92.9 80.5-98.5	39/42 92.9 80.5-98.5	25/42 59.5 [†] 43.3-74.4	35/42 83.3 68.6-93.0	36/42 85.7 71.5-94.6
>20 dpos	SN	n/N % 95% CI	70/76 92.1 83.6-97.0	62/74 83.8 73.4-91.3	63/74 85.1 75.0-92.3	69/74 93.2 84.9-97.8	56/75 74.7 [†] 63.3-84.0	67/76 88.2 78.7-94.4	61/76 80.3 [†] 69.5-88.5	57/76 75.0 [†] 63.7-84.2	69/76 90.8 81.9-96.2	70/76 92.1 83.6-97.0	27/76 35.5 [†] 24.9-47.3	55/76 72.4 [†] 60.9-82.0	57/76 75.0 [†] 63.7-84.2
Hospitalized patients	SN	n/N % 95% CI	86/103 83.5 74.9-90.1	81/105 77.1 67.9-84.8	68/105 64.8 [†] 54.8-73.8	82/105 78.1 69.0-85.6	58/103 56.3 [†] 46.2-66.1	75/104 72.1 [†] 62.5-80.5	77/104 74.0 64.5-82.1	80/105 76.2 66.9-84.0	74/105 70.5 [†] 60.8-79.0	83/105 79.0 70.0-86.4	53/104 51.0 [†] 41.0-60.9	67/104 64.4 [†] 54.4-73.6	73/104 70.2 [†] 60.4-78.8
Pauci- symptomatic patients	SN	n/N % 95% CI	60/66 90.9 81.3-96.6	53/64 82.8 71.3-91.1	54/64 84.4 73.1-92.2	59/64 92.2 82.7-97.4	48/65 73.8 [†] 61.5-84.0	57/66 86.4 75.7-93.6	51/66 77.3 [†] 65.3-86.7	48/66 72.7 [†] 60.4-83.0	60/66 90.9 81.3-96.6	60/66 90.9 81.3-96.6	19/66 28.8 [†] 18.3-41.2	46/66 69.7 [†] 57.2-80.4	48/66 72.7 [†] 60.4-83.0

434 **Table 2. Performance characteristics of serology kits versus the consensus result of all assays**

			S-RBD total ab (Wantai)	S1 IgA (EI)	S1 IgG (EI)	S1 IgA + IgG (EI)	S1/S2 IgG (DiaSorin)	N total ab (Roche)	N IgG (EI)	S/N IgM (Orient Gene)	S/N IgG (Orient Gene)	S/N IgM + IgG (Orient Gene)	IgM (Innovita)	IgG (Innovita)	IgM + IgG (Innovita)
Overall	SN	n/N	133/133	127/133	119/133	132/133	106/133	129/134	126/134	123/135	130/135	135/135	70/134	112/134	119/134
		%	100	95.5 [†]	89.5 [†]	99.2	79.7 [†]	96.3 [†]	94.0 [†]	91.1 [†]	96.3 [†]	100	52.2 [†]	83.6 [†]	88.8 [†]
		95% CI	97.3-100	90.4-98.3	83.0-94.1	95.9-99.9	71.9-86.2	91.5	88.6-97.4	85.0-95.3	91.6-98.8	97.3-100	43.4-60.9	76.2-89.4	82.2-93.6
<10 dpos	SN	n/N	29/29	29/29	22/29	29/29	16/28	25/28	27/28	28/29	25/29	29/29	18/28	22/28	26/28
		%	100	100	75.9 [†]	100	57.1 [†]	89.3	96.4	96.6	86.2 [†]	100	64.3 [†]	78.6 [†]	92.9
		95% CI	88.1-100	88.1-100	56.5-89.7	88.1-100	37.2-75.5	71.8-97.7	81.6-99.9	82.2-99.9	68.3-96.1	88.1-100	44.1-81.4	59.0-91.7	76.5-99.1
10-20 dpos	SN	n/N	36/36	38/38	36/38	38/38	34/38	38/38	38/38	38/38	38/38	38/38	25/38	35/38	36/38
		%	100	100	94.7	100	89.5 [†]	100	100	100	100	100	65.8 [†]	92.1	94.7
		95% CI	90.3-100	90.8-100	82.2-99.4	90.8-100	75.2-97.1	90.8-100	90.8-100	90.8-100	90.8-100	90.8-100	48.6-80.4	78.6-98.3	82.2-99.4
>20 dpos	SN	n/N	68/68	60/66	61/66	65/66	56/67	66/68	61/68	57/68	67/68	68/68	27/68	55/68	57/68
		%	100	90.9 [†]	92.4 [†]	98.5	83.6 [†]	97.1	89.7 [†]	83.8 [†]	98.5	100	39.7 [†]	80.9 [†]	83.8 [†]
		95% CI	94.7-100	81.3-96.6	83.2-97.5	91.8-99.9	72.5-91.5	89.8-99.6	79.9-95.8	72.9-91.6	92.1-99.9	94.7-100	28.0-52.3	69.5-89.4	72.9-91.6
Hospitalized patients	SN	n/N	75/75	76/77	67/77	77/77	58/76	73/76	75/76	76/77	67/77	77/77	51/76	66/76	71/76
		%	100	98.7	87.0 [†]	100	76.3 [†]	96.0	98.7	98.7	87.0 [†]	100	67.1 [†]	86.8 [†]	93.4 [†]
		95% CI	95.2-100	93.0-99.9	77.4-93.6	95.3-100	56.2-85.3	88.9-99.2	93.0-99.9	93.0-99.9	77.4-93.6	95.3-100	55.4-77.5	77.1-93.5	85.3-97.8
Pauci-symptomatic patients	SN	n/N	58/58	51/56	52/56	55/56	48/57	56/58	51/58	48/58	58/58	58/58	19/58	46/58	48/58
		%	100	91.1 [†]	92.9 [†]	98.2	84.2 [†]	96.6	87.9 [†]	82.8 [†]	100	100	32.8 [†]	79.3 [†]	82.8 [†]
		95% CI	93.8-100	80.4-97.0	82.7-98.0	90.4-99.9	72.1-92.5	88.1-99.6	76.7-95.0	70.6-91.4	93.8-100	93.8-100	21.0-46.3	66.6-88.8	70.6-91.4

435

436

437

438