

**Prolonged SARS-CoV-2 Viral Shedding in Patients with COVID-19 was Associated
with Delayed Initiation of Arbidol Treatment: a retrospective cohort study**

Yaya Zhou^{1*}, Xinliang He^{1*}, Jianchu Zhang^{1*}, Yu'e Xue¹, Mengyuan Liang¹, Bohan Yang¹,
Wanli Ma¹, Qiong Zhou¹, Long Chen¹, Xiaorong Wang^{1†}

¹Department of Respiratory and Critical Care Medicine, Union Hospital, Tongji Medical
College, Huazhong University of Science and Technology, Wuhan, 430022, China.

*Equal contributors

†Correspondence to:

Xiaorong Wang: rong-100@163.com. Department of Respiratory and Critical Care Medicine,
Union Hospital, Tongji Medical College, Huazhong University of Science and Technology,
Wuhan 430022, China. Tel: 86-(027)-85726707; Fax: 86-27-85726707.

Abstract

Objectives: Evaluate the risk factors of prolonged SARS-CoV-2 virus shedding and the impact of arbidol treatment on SARS-CoV-2 virus shedding.

Methods: Data were retrospective collected from adults hospitalized with COVID-19 in Wuhan Union Hospital. We described the clinical features and SARS-CoV-2 RNA shedding of patients with COVID-19 and evaluated factors associated with prolonged virus shedding by multivariate regression analysis.

Results: Among 238 patients, the median age was 55.5 years, 57.1% were female, 92.9% (221/238) used arbidol, 58.4% (139/238) used arbidol combination with interferon. The median time from illness onset to start arbidol was 8 days (IQR, 5-14 days) and the median duration of SARS-CoV-2 virus shedding was 23 days (IQR, 17.8–30 days). SARS-CoV-2 RNA clearance was significantly delayed in patients who received arbidol >7 days after illness onset, compared with those in whom arbidol treatment was started \leq 7 days after illness onset (HR, 1.738 [95% CI, 1.339–2.257], $P < .001$). Multivariate regression analysis revealed that prolonged viral shedding was significantly associated with initiation arbidol more than seven days after symptom onset (OR 2.078, 95% CI [1.114-3.876], $P .004$), more than 7 days from onset of symptoms to first medical visitation (OR 3.321, 95% CI[1.559-7.073], $P .002$), illness onset before Jan.31, 2020 (OR 3.223, 95% CI[1.450-7.163], $P .021$). Arbidol combination with interferon was also significantly associated with shorter virus shedding (OR .402, 95% CI[.206-.787], $P .008$).

Conclusions: Early initiation of arbidol and arbidol combination with interferon as well as consulting doctor timely after illness onset were helpful for SARS-CoV-2 clearance.

Introduction

Outbreak of the novel coronavirus disease (COVID-19) caused by severe acute respiratory syndrome coronavirus-2 (SARS-CoV-2) in Wuhan City, Hubei Province, China, has been rapidly spreading nationwide and abroad. Up to April 7, 2020, a total of 83,157 COVID-19 cases with 4.03% mortality has been reported in China [1], and there were more than 1,300,000 people with 78,932 deaths have been infected by SARS-CoV-2 globally outside China including more than 180 countries and regions around the world [2]. Building scenarios and strategies including careful management and isolation based on the clinical characteristics and duration of virus shedding of confirmed patients with COVID-19 are important to slow and control transmission of the COVID-19 [3].

Viral replication in respiratory epithelial cells which was associated with virus shedding was the factor contributing to the pathogenesis of SARS-CoV-2 virus infection [4, 5], more importantly, virus shedding was the most important factors in assessing the risk of transmission and guiding decisions regarding isolation of patients with COVID-19. There were many factors contributing to the prolonged respiratory virus other than SARS-CoV-2 virus shedding, such as delayed initiation of antiviral treatment [6-8] and the corticosteroid administration [6, 8], older age [8], major comorbidities [7-9], duration of respiratory symptoms [7] and severity [10]. By now, the therapeutic antivirals for COVID-19 including arbidol, lopinavir–ritonavir, interferon, chloroquine and ribavirin have been recommended [11]. Arbidol, a small indole-derivative molecule, is a broad-spectrum antiviral to treat influenza and other respiratory viral infections [12, 13]. In a recent open-label, randomized,

controlled trial study reported that, comparing to standard care, the lopinavir–ritonavir treatment has no more effects on SARS-CoV-2 virus clearance [14]. However, the effects on virus clearance of arbidol for treatment of COVID-19 were unclear.

Here, we conducted a retrospective cohort study of 238 hospitalized patients with laboratory-confirmed COVID-19 in Wuhan Union hospital to identify the risk factors of prolonged SARS-CoV-2 virus shedding, and the effects of arbidol on the SARS-CoV-2 virus clearance as well.

Methods

Study design

This is a retrospective observational cohort study of patients with confirmed COVID-19 hospitalized in isolation ward of department of respiratory and critical care medicine, Wuhan Union Hospital from January 15, 2020 to March 15, 2020 .

Data collection

Demographic information, comorbidities, date of symptom onset, symptoms and signs, laboratory test on admission, radiological images and treatment data of patients with COVID-19 were extracted from electronic medical records.

Laboratory Procedures

All patients were confirmed COVID-19 by real-time reverse transcriptase–polymerase chain

reaction assays (RT-PCR) according to WHO interim guidance [15]. To identify SARS-CoV-2 infection, throat swab samples were obtained from all patients at admission and tested using RT-PCR according to the same protocol described previously [16] (Supplementary).

For patients, throat swab specimens were obtained for SARS-CoV-2 PCR re-examination every other day after admission. We defined the duration of viral detection as the number of days from illness onset until the day of the last negative RT-PCR specimen when tested two consecutive negative specimens. In our current analysis, prolonged viral shedding was defined as viral shedding ≥ 23 days (median duration of SARS-CoV-2 RNA shedding of 238 patients).

Statistical Analysis

Median values with interquartile range (IQR) were used to describe continuous variables, and absolute or relative frequencies were used to describe categorical variables. We used the Mann Whitney U test for analysis of continuous variables and the χ^2 test or Fisher exact test for analysis of discrete variables in bivariate analyses. To identify risk factors associated with prolonged duration of SARS-CoV-2 RNA shedding, we included indicators that were significantly different between the two group except of length of hospital (viral shedding ≥ 23 vs < 23 days) to evaluate the factors associated with virus shedding by univariable regression analysis, and then the significantly contributing factors in univariable regression analysis were included to identify risk factors of prolonged SARS-CoV-2 virus shedding by

multivariable logistic regression models. We used Kaplan-Meier survival analysis to estimate the cumulative SARS-CoV-2 RNA-negativity rate and the stratified log-rank statistic to compare the difference of SARS-CoV-2 clearance between patients with or without risk factors.

The statistical analyses and graphics were performed with IBM SPSS 22.0 (SPSS Inc, Armonk, NY) and R 3.6.0 (The R Foundation for Statistical Computing, Vienna, Austria). For all the analyses, $P < .05$ was considered to be statistically significant and all tests were 2-tailed, unless otherwise indicated.

Ethical Approval

Ethical approval was waived by the institutional review board of Wuhan Union Hospital since we collected and analyzed all data from the patients according to the policy for public health outbreak investigation of emerging infectious diseases issued by the National Health Commission of the People's Republic of China.

Results

Demographics and Characteristics

There were a total of 242 adult patients with confirmed COVID-19. After excluding 4 non-survivors who tested SARS-CoV-2 RNA positive until death, we included 238 survivors who tested two consecutive SARS-CoV-2 RNA negative, 237 survivors discharged and 1 survivor was still hospitalized before April 7, 2020 in the final analysis. The median age was

55.5 years (IQR, 35-67.3 years), and 136 patients (57.1%) were female. The most common symptoms on admission were fever and cough, followed by fatigue. 88 patients (37.0%) had comorbidities. 92.9% (221/238) used arbidol, 61.7% (147/238) used interferon. Among them, arbidol monotherapy in 82 (34.4%); arbidol combination with interferon in 139 (58.4%); interferon monotherapy in 3 (1.3%); interferon and lopinavir/ritonavir in 5 (2.1%); and lopinavir/ritonavir monotherapy in 1 (0.4%); and miss in 8 (3.4%) (Table 1).

SARS-CoV-2 Viral Shedding and Comparison of Characteristics of Patients with Prolonged and Short Viral Shedding

The median duration of viral shedding was 23 days (IQR, 17.8–30 days) from illness onset. The shortest observed duration of viral shedding was 9 days, whereas the longest was 51 days (Figure 1).

The data of patients with viral shedding <23 days and ≥23 days groups were compared (Table 1). Compared with patients with viral shedding <23 days, patients with prolonged viral shedding were older ($p=.017$), a higher proportion of hypertension (33.6%, $p=.044$), longer time of fever ($p<.001$), longer time of hospital ($p<.001$) and later of first medical visitation ($p<.001$). More patients with prolonged viral shedding had onset symptoms before January 31 compared with those with viral shedding <23 days (85.2%, $p=.027$). Less patients with prolonged viral shedding received corticosteroids treatment (17.2%, $p=.011$), but the cumulative doses of corticosteroid usage were significantly higher ($p=.023$) than that of patients with virus shedding less than 23 days. As summarized in Supplementary Table 1, the

time from illness onset to arbidol or interferon treatment, elevated C-reactive protein (CRP), elevated interleukin-4 (IL-4) and interleukin-6 (IL-6), elevated D-dimer and more lobes lesion in lung CT images were significantly associated with the prolonged viral shedding of COVID-19. Compared to prolonged viral shedding group, more patients received arbidol combination with interferon treatment ($p=.001$) in patients with virus shedding <23 days (Table 1).

Risk Factors for Prolonged Viral Shedding

The results of univariable regression analysis demonstrated that age older than 65 years, illness onset before January 31, the time from illness onset to first medical visitation, hypertension, arbidol combination with interferon, lobe lesions in lung computed tomography (CT) images, and the time from illness onset to arbidol or interferon initiation were significantly associated with the duration of SARS-CoV-2 RNA shedding by univariable regression analysis. Other indicators including cumulative dose of corticosteroids was not associated with prolonged viral shedding significantly (Table 2).

The multivariable logistic regression showed the time from illness onset to arbidol initiation more than 7 days, first medical visitation after illness onset more than 7 days and illness onset before January 31 were independent factors associated with the duration of SARS-CoV-2 RNA shedding. Importantly, arbidol combination with interferon was also significantly associated with shorter virus shedding (Table 2).

Impact of Delayed Arbidol Treatment and Arbidol Combination Regimens on Virus Shedding

The median time from illness onset to arbidol treatment initiation was 8 days (IQR, 5-14 days), and the median duration of SARS-CoV-2 virus shedding was 20 days (IQR, 16-25 days) in the patients with initiation of arbidol ≤ 7 days and 28 days (IQR, 21-33) in patients with initiation arbidol >7 days. SARS-CoV-2 RNA clearance was significantly delayed in patients who received arbidol treatment beginning >7 days after illness onset, compared with those in whom arbidol treatment was started ≤ 7 days after illness onset (HR, 1.738 [95% CI, 1.339-2.257], $P < .001$, Figure 2A). The characteristics of patients of the two groups were summarized in Table 3. Age was significantly different in two groups, so we further compared characteristics with patients who were less than 65 years in two groups, the results were showed in Supplementary Table 2.

Comparing to arbidol monotherapy, the median durations of SARS-CoV-2 shedding of patients with arbidol-interferon combination treatment (21 days, IQR, 21.8-33 days) was significantly shorter than that of arbidol monotherapy (28 days, IQR, 16-28 days) ($P < .001$). The delayed virus clearance was also seen in patients in arbidol monotherapy, in compared with those who received arbidol-interferon combination therapy in Kaplan-Meier survival analysis (Figure 2C). The main characteristics of patients who received arbidol monotherapy and arbidol-interferon combination are summarized in Table 3.

Discussion

In the current cohort study of 238 hospitalized patients with COVID-19, we found that the duration of SARS-CoV-2 RNA shedding was very long and initiation of arbidol within seven days after illness onset as well as combination with arbidol and interferon were helpful for SARS-CoV-2 RNA clearance. We also found that the time from onset of symptoms to first medical visitation more than 7 days as and illness onset before Jan.31, 2020 as independent risk factors for prolonged SARS-CoV-2 RNA detection.

We detected SARS-CoV-2 RNA in the respiratory tract for a median duration of 23 days with a longest one was 51 days in an old man with severe COVID-19, which was a little longer than 20 days reported by an early study [17]. The much longer virus shedding may correlate with the SARS-CoV-2 pandemic around the world, and demonstrates more time may be required to quarantine the patients with COVID-19 and the length of antiviral treatment may be longer. The prolonged shedding duration of highly pathogenic avian influenza A (H5N1) and A (H1N1) pdm09 virus shedding were correlated with disease severity [6, 10, 18, 19]. Compared to patients with virus shedding less than 23 days, more patients with prolonged virus shedding has abnormally higher valued of D-dimer, IL-4, IL-6, CRP, more lobes lesion in lung images, older age and more patients with hypertension. Previous studies reported that the D-dimer and older age were risk factors of death and acute respiratory distress syndrome (ARDS) in patients with COVID-19 [17, 20]. Additionally, higher inflammation markers, more lobes lesion in lung images and comorbidities associated with severity of COVID-19 [11]. Those results combined with our present findings demonstrated that patients with prolonged virus shedding are more likely to develop to severe stations.

Antiviral therapy especially early initiated antiviral therapy has been proven to reduce the viral shedding period of seasonal and epidemic influenza as well as H7N9 avian influenza [6, 7, 21-23]. In this retrospective study, most patients (221/238, 92.9%) used arbidol, and the findings demonstrated that initiation of arbidol within 7 days after illness onset was associated with a shorter duration of SARS-CoV-2 RNA shedding. Multivariate regression analysis revealed delayed arbidol antiviral therapy was an independent risk factor of the prolonged SARS-CoV-2 RNA shedding. The antiviral mechanism of arbidol involves inhibition of virus-mediated fusion with target membrane and a resulting block of virus entry into target cells was revealed to effectively inhibit SARS-CoV in vitro [24]. Arbidol showed tendency to improve discharging rate and reduce mortality of patients with COVID-19 [25]. These results combined with our present findings suggest that arbidol has a therapeutic effect on SARS-CoV-2 infections, however, further research is needed to clarify the effects of additional arbidol treatment for COVID-19.

Interferon, which was reported to inhibit SARS-CoV reproduction in vitro [26], is also a broad-spectrum antiviral and is recommended to treat coronavirus infection combining with other antivirals [27]. In the present study, about 147 (61.8%) of patients used interferon, among them, up to 94.6% (139/147) was used in combination with arbidol. Our findings showed arbidol combination with interferon can help to clear SARS-CoV-2 RNA. The effects of arbidol combination with interferon treatment for COVID-19 worth further study.

The usage of corticosteroids in patients with COVID-19 was controversial [28]. Most observational studies have reported that use of corticosteroids was associated with persistent viral shedding [6, 7, 29]. In the present study, 22.7% used corticosteroids and most of them used in a short duration, and it was not associated with prolonged SARS-CoV-2 RNA shedding, that are in accordance with the findings in a retrospective study in china [30]. However, the length and cumulative dose of corticosteroids usage were higher in prolonged shedding group, which demonstrated the long-term use of corticosteroids to a certain dose has a tendency to delay viral clearance.

Our present finding showed that the time from onset of symptoms to first medical visitation more than 7 days as an independent risk factor for prolonged SARS-CoV-2 RNA detection, suggesting that consulting a doctor as soon as possible after illness onset helps to clear SARS-CoV-2 (Table 2, Figure 2B). Interestingly, illness onset before Jan.31 was also associated with significant differences in SARS-CoV-2 RNA shedding, compared with illness onset after Jan.31 (Table 2, Figure 2D). This may be associated with shortage of medical resources due to the outbreak of COVID-19 in Wuhan and a large number of patients could not see a doctor and received effective treatment timely in January, 2020. Additionally, the genomic mutation during the virus transmissibility may correlate with the SARS-CoV-2 virus shedding.

Some limitations of this study should also be acknowledged. First, the retrospective single-center design leads to missing data and unavoidable biases and the sample size was

relatively small. Second, owing to the small number of patients who initiated arbidol treatment 2–3 days of illness onset, we were not able to assess the effect of earlier initiation of arbidol treatment. Despite these limitations, the study was designed to reflect the ‘real life’ clinical situation. Clinical information was meticulously gathered using standard protocols by admitted medical team. This has important implications for both patient isolation decision making and guidance around the length of antiviral treatment and the choice of antivirals.

To the best of our knowledge, this is the first retrospective cohort study among patients with COVID-19 to assess the risk factors of prolonged virus shedding and the effects of arbidol on SARS-CoV-2 shedding. We found that initiation of arbidol within seven days after illness onset as well as arbidol combination with and interferon were helpful for clearance of SARS-CoV-2 RNA. Additionally, prolonged SARS-CoV-2 RNA shedding was independently associated with delayed medical visitation and correlated with the illness onset day (before or after 31, Jan). These results reinforce consulting a doctor and receiving treatments as soon as possible after illness onset helps to SARS-CoV-2 clearance in patients with COVID-19.

Conflicts of Interest: No potential conflict of interest was reported by the authors.

Funding: This work was supported by the Fundamental Research Funds for the Central Universities [No. 2020kfyXGYJ034].

Acknowledgements: We acknowledge all health-care workers involved in the diagnosis and treatment of patients in Wuhan.

Authors' Contributors: XW had the idea for and designed the study, XW had full access to all data in the study and take responsibility for the integrity of the data and the accuracy of the data analysis. XW, YZ contributed to the drafting of the manuscript and data analysis. All authors contributed to data acquisition, data analysis, or data interpretation. The final version had been reviewed and approved by all authors.

References

1. NHC. Update on new coronavirus pneumonia epidemic as of 24:00 on March 31. Available at: <http://www.nhc.gov.cn/xcs/yqtb/202004/28668f987f3a4e58b1a2a75db60d8cf2.shtml>. Accessed on 8 April 2020.
2. Johns Hopkins University. Coronavirus COVID-19 Global Cases by the Center for Systems Science and Engineering (CSSE). Available at: <https://gisanddata.maps.arcgis.com/apps/opsdashboard/index.html#/bda7594740fd40299423467b48e9ecf6>. Accessed on 8 April 2020.
3. World Health Organization. Report of the WHO-China Joint Mission on Coronavirus Disease 2019 (COVID-19). 2020. Available at: <https://www.who.int/docs/default-source/coronaviruse/who-china-joint-mission-on-covid-19-final-report.pdf>. Accessed on 10 March 2020.
4. Jin Y, Yang H, Ji W, Wu W, Chen S, Zhang W, Duan G, et al. Virology, Epidemiology, Pathogenesis, and Control of COVID-19. *Viruses* 2020; 12(4).
5. Xu Z, Shi L, Wang Y, Zhang J, Huang L, Zhang C, et al. Pathological findings of COVID-19 associated with acute respiratory distress syndrome. *The Lancet Respiratory Medicine* 2020; 8(4): 420-2.
6. Wang Y, Guo Q, Yan Z, Zhou D, Zhang W, Zhou S, et al. Factors Associated With Prolonged Viral Shedding in Patients With Avian Influenza A(H7N9) Virus Infection. *J Infect Dis* 2018; 217(11): 1708-17.
7. Ryoo SM, Kim WY, Sohn CH, Seo DW, Oh BJ, Lee JH, et al. Factors promoting the

- prolonged shedding of the pandemic (H1N1) 2009 influenza virus in patients treated with oseltamivir for 5 days. *Influenza Other Respir Viruses* 2013; 7(5): 833-7.
8. Lee N, Chan PK, Hui DS, Rainer TH, Wong E, Choi KW, et al. Viral loads and duration of viral shedding in adult patients hospitalized with influenza. *J Infect Dis* 2009; 200(4): 492-500.
 9. Kanchana S, Kanchana S, Chuntrakul C, Malathum K, Prachayangprecha S, Poovorawan Y. Pandemic (H1N1) 2009 virus infection: persistent viral shedding after Oseltamivir treatment. *J Infect* 2011; 63(4): 295-9.
 10. Fielding JE, Kelly HA, Mercer GN, Glass K. Systematic review of influenza A(H1N1) pdm09 virus shedding: duration is affected by severity, but not age. *Influenza Other Respir Viruses* 2014; 8(2): 142-50.
 11. National Health Commission of the People's Republic of China. Diagnosis and Treatment Program of New Coronary Pneumonia (the seventh edition). 2020. Available at: <http://www.nhc.gov.cn/xcs/zhengcwj/202003/46c9294a7dfe4cef80dc7f5912eb1989.shtml>. Accessed on 3 March 2020.
 12. Hulseberg CE, Feneant L, Szymanska-de Wijs KM, Kessler NP, Nelson EA, Shoemaker CJ, et al. Arbidol and Other Low-Molecular-Weight Drugs That Inhibit Lassa and Ebola Viruses. *J Virol* 2019; 93(8).
 13. Blaising J, Polyak SJ, Pecheur EI. Arbidol as a broad-spectrum antiviral: an update. *Antiviral Res* 2014; 107: 84-94.
 14. Cao B, Wang Y, Wen D, Liu W, Wang J, Fan G, et al. A Trial of Lopinavir-Ritonavir in Adults Hospitalized with Severe Covid-19. *N Engl J Med* 2020.

15. World Health Organization. Clinical management of severe acute respiratory infection when novel coronavirus (nCoV) infection is suspected: interim guidance. January 28, 2020. Available at: [https://www.who.int/publications-detail/clinical-management-of-severeacute-respiratory-infection-when-novelcoronavirus-\(ncov\)-infection-is-suspected](https://www.who.int/publications-detail/clinical-management-of-severeacute-respiratory-infection-when-novelcoronavirus-(ncov)-infection-is-suspected). Accessed on 5 March 2020.
16. Huang C, Wang Y, Li X, Ren L, Zhao J, Hu Y, et al. Clinical features of patients infected with 2019 novel coronavirus in Wuhan, China. *Lancet* 2020; 395: 497–506.
17. Zhou F, Yu T, Du R, Fan G, Liu Y, Liu Z, et al. Clinical course and risk factors for mortality of adult inpatients with COVID-19 in Wuhan, China: a retrospective cohort study. *The Lancet* 2020; 395(10229): 1054-62.
18. de Jong MD, Simmons CP, Thanh TT, Hien VM, Smith GJ, Chau TN, et al. Fatal outcome of human influenza A (H5N1) is associated with high viral load and hypercytokinemia. *Nat Med* 2006; 12(10): 1203-7.
19. Gu J, Xie Z, Gao Z, Liu J, Korteweg C, Ye J, et al. H5N1 infection of the respiratory tract and beyond: a molecular pathology study. *The Lancet* 2007; 370(9593): 1137-45.
20. Wu C, Chen X, Cai Y, Xia J, Zhou X, Xu S, et al. Risk Factors Associated With Acute Respiratory Distress Syndrome and Death in Patients With Coronavirus Disease 2019 Pneumonia in Wuhan, China. *JAMA Intern Med* 2020.
21. Treanor JJ, Hayden FG, Vrooman PS, Barbarash R, Bettis R, Riff D, et al. Efficacy and Safety of the Oral Neuraminidase Inhibitor Oseltamivir in Treating Acute InfluenzaA Randomized Controlled Trial. *JAMA* 2000; 283(8): 1016-24.
22. Aoki FY, Boivin G. Influenza virus shedding: excretion patterns and effects of antiviral

- treatment. *J Clin Virol* 2009; 44(4): 255-61.
23. Nicholson KG, Aoki FY, Osterhaus A, Trottier S, Carewicz O, Mercier CH, et al. Efficacy and safety of oseltamivir in treatment of acute influenza: a randomised controlled trial. *The Lancet* 2000; 355(9218): 1845-50.
 24. Khamitov RA, Loginova S, Shchukina VN, Borisevich SV, Maksimov VA, Shuster AM. Antiviral activity of arbidol and its derivatives against the pathogen of severe acute respiratory syndrome in the cell cultures. *Voprosy virusologii* 2008; 53(4): 9-13.
 25. Wang Z, Yang B, Li Q, Wen L, Zhang R. Clinical Features of 69 Cases with Coronavirus Disease 2019 in Wuhan, China. *Clin Infect Dis* 2020.
 26. Stockman LJ, Bellamy R, Garner P. SARS: systematic review of treatment effects. *PLoS Med* 2006; 3(9): e343.
 27. Yin Y, Wunderink RG. MERS, SARS and other coronaviruses as causes of pneumonia. *Respirology* 2018; 23(2): 130-7.
 28. Shang L, Zhao J, Hu Y, Du R, Cao B. On the use of corticosteroids for 2019-nCoV pneumonia. *The Lancet* 2020; 395(10225): 683-4.
 29. Arabi YM, Mandourah Y, Al-Hameed F, Sindi AA, Almekhlafi GA, Hussein MA, et al. Corticosteroid Therapy for Critically Ill Patients with Middle East Respiratory Syndrome. *Am J Respir Crit Care Med*. 2018; 197(6):757–767.
 30. Ni Q, Ding C, Li YT, Zhao H, Liu J, Zhang X, et al. A retrospective study of middle- and low-dose glucocorticoids clear virus in patients with coronavirus disease 2019 pneumonia. *Chinese Journal of clinical infection*. 2020.

Figure 1. Distribution of arbidol treatment and proportion of patients with undetectable SARS-CoV-2 RNA by day after onset of symptom. Among 238 patients, 221 patients (92.9%) received arbidol treatment, 17 patients (7.1%) did not receive arbidol treatment.

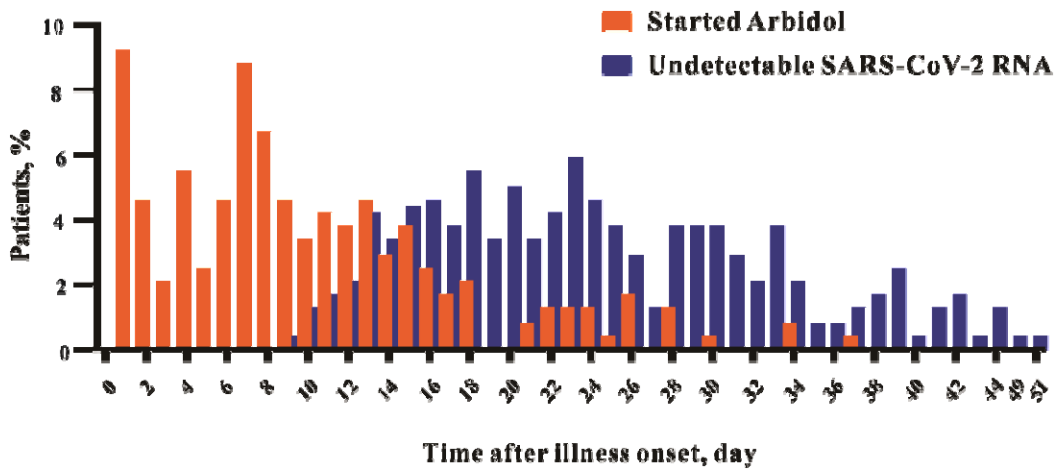


Figure 2. A. Cumulative proportion of between patients who started arbidol therapy ≤ 7 days and >7 days after illness onset with detectable SARS-CoV-2 RNA, by day after onset of illness. B. Cumulative proportion of patients who firstly visited medical staff ≤ 7 days from symptoms onset versus >7 days who had detectable SARS-CoV-2 RNA, by day after onset of illness. C. Cumulative proportion of patients treated with arbidol versus combination of arbidol and interferon who had detectable SARS-CoV-2 RNA, by day after onset of illness. D. Cumulative proportion of patients who onset illness before Jan. 31 versus after Feb. 1 who had detectable SARS-CoV-2 RNA, by day after onset of illness. HR, hazard ratio; CI, confidence interval. Jan. 31 was included in before January 31 group and Feb. 1 was included in after Feb. 1 group.

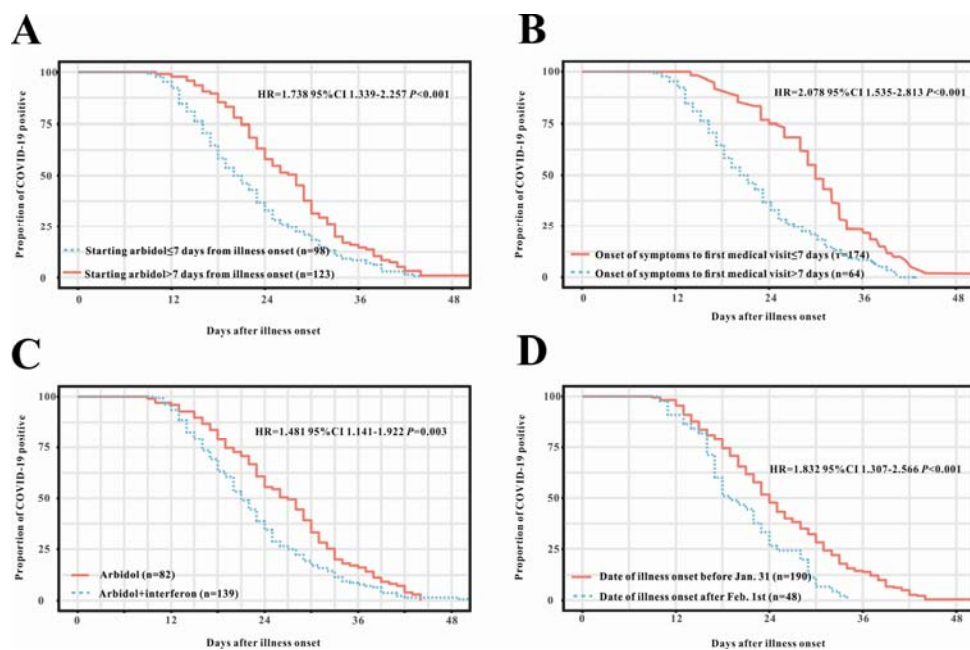


Table 1 Demographic and Clinical Characteristics of Patients With COVID-19 on Admission

Characteristics	Admission			P Value
	Total (n=238)	Viral shedding ≥ 23 (n=128)	Viral shedding < 23 (n=110)	
Days of viral shedding	23(17.8-30)	30(25-34)	17(14-20)	<0.001
Age, years	55.5(35-67.3)	60(39.3-68.8)	51(32-66)	0.017
<65	150(63)	73 (57)	78 (70.9)	
≥ 65	88(37)	55 (43)	32 (29.1)	
Gender				0.107
Male	102(42.9)	61 (47.7)	41 (37.3)	
Female	136(57.1)	67 (52.3)	69 (62.7)	
Current smoker	7(2.9)	2 (1.6)	5 (4.5)	0.361
Date of illness onset				0.027
Before January 31*	190(79.8)	109 (85.2)	82 (74.5)	
After January 31	48(20.2)	19 (14.8)	29 (25.5)	
Disease severity status				0.394
Mild/General	202(84.9)	111(86.7)	91(82.7)	
Severe/Critical	36(15.1)	17(13.3)	19(17.3)	
Symptoms				
Fever	188(79)	98 (76.6)	90 (81.8)	0.323
Cough	154(64.7)	86 (67.2)	68 (61.8)	0.320
Sputum	75(31.5)	38 (29.7)	37 (20.9)	0.515

Myalgia	62(26.1)	39 (30.5)	23 (20.9)	0.095
Dyspnea	101(42.4)	58 (45.3)	43 (39.1)	0.335
Fatigue	114(47.9)	62 (48.4)	52 (47.3)	0.858
Pharyngalgia	33(13.9)	16 (12.5)	17 (15.5)	0.513
Digestive Symptoms	73(30.7)	36 (28.1)	37 (33.6)	0.360
Highest temperature, °C	38.5(38-39)	38.5(38.1-39)	38.5(37.9-39)	0.383
≥39.0	57(23.9)	29 (22.7)	28 (25.5)	
<39.0	181(76.1)	99 (77.3)	82 (74.5)	
Length of fever, days	10(6-14)	13(8- 20)	9(5-12)	<0.001
Comorbidities	88(37)	54 (42.2)	34 (30.9)	0.073
Hypertension	67(28.2)	43 (33.6)	24 (21.8)	0.044
Cardiovascular disease	13(5.5)	7 (5.5)	6 (5.5)	0.389
Diabetes	22(9.2)	9 (7)	13 (11.8)	0.205
Chronic lung disease	8(3.4)	4 (3.1)	4 (3.6)	0.828
Chronic kidney disease	2(0.8)	2 (1.6)	0 (0)	0.190
Nervous system disease	3(1.3)	1 (0.8)	2 (1.8)	0.477
Digestive system disease	5(2.1)	4 (3.1)	1 (0.9)	0.236
Immune system disease	2(0.8)	2 (1.6)	0 (0)	0.190
Hypothyroidism	3(1.3)	2 (1.6)	1 (0.9)	0.654
Co-infections	11(4.6)	8 (6.3)	3 (2.7)	0.198
Treatment in hospital				
Supplemental oxygen required	105(44.1)	53 (41.4)	52 (47.3)	0.363

Nasal cannula	86(36.1)	42(32.8)	44 (40)	
Mask	7(2.9)	6(4.7)	1(0.9)	
NMV/IMV/ECMO	12(5.1)	5 (3.9)	7 (6.4)	
Antibacterial	229(96.2)	122 (95.3)	107 (97.3)	0.431
Corticosteroids	54(22.7)	22 (17.2)	32 (29.1)	0.011
Dose, hydrocortisone equivalents per day, mg	150(133-200)	165(129-200)	144 (134-166)	0.406
Length of usage, days	3(1-8)	5(1.8-9)	2 (1-4.8)	0.058
Cumulative dose of hydrocortisone equivalents, mg	400(200-1300)	697 (265-1450)	300(196-734)	0.023
Anviral treatment				
Arbidol monotherapy	82(34.4)	58(45.3)	24(21.8)	<0.001
Interferon monotherapy	3(1.3)	2(1.6)	1(0.9)	1.000
Lopinavir/ritonavir monotherapy	1(0.4)	1(0.8)	0(0)	1.000
Arbidol-interferon combination	139 (58.4)	62 (48.4)	77 (70)	0.001
Interferon-lopinavir/ritonavir combination	5(2.1)	3(2.3)	2(1.8)	1.000
Miss	8(3.4)	2(1.6)	6(5.5)	0.194
Onset of symptoms to use arbidol, days	8(5-14)	11 (7-16)	7(2-11)	<0.001
Onset of symptoms to use interferon, days	11(7-17)	13(10-22)	8(6- 12.8)	<0.001
Onset of symptoms to first medical	3(1-6.3)	5(2-8)	2 (0.8-4)	<0.001

visitation, days

Onset of symptoms to first admission, days	10(6-16.3)	14(9-21)	7(5-10.3)	<0.001
Length of hospital, days	20(14-26)	25(18-27)	16(11-21)	<0.001

Data are median (IQR) or n (%). P values were calculated by Mann-Whitney U test, χ^2 test, or

Fisher's exact test, as appropriate. Values in boldface indicate statistical significance ($P < .05$).

Abbreviations: IQR, interquartile range; NMV, noninvasive ventilation; IMV, Invasive ventilation; ECMO, extracorporeal membrane oxygenation. * January 31 was included in the before January 31 group.

Table 2 Univariate and Multivariate Logistic Regression Analysis for Prolonged Viral

Shedding of Patients with COVID-19

	Univariate		Multivariate	
	OR (95% CI)	P-value	OR (95% CI)	P-value
Age \geq 65 years old	1.836 (1.070-3.152)	0.027	1.075 (0.534-2.166)	0.839
Male sex	1.532 (0.912-2.575)	0.107		
Date of illness onset before Jan. 31	2.054 (1.077-3.919)	0.029	3.223 (1.450-7.163)	0.004
Onset of symptoms to first medical visitation >7 days	5.588(2.787-11.202)	<0.001	3.321 (1.559-7.073)	0.002
Hypertension	1.813 (1.012-3.246)	0.045	1.332 (0.656-2.707)	0.428
Cumulative dose of corticosteroids	1.000(1.000-1.001)	0.784		
Starting arbidol >7 days from illness onset	3.062(1.791-5.234)	<0.001	2.078 (1.114-3.876)	0.021
Interferon and arbidol combination	0.403(0.236-0.688)	0.001	0.402 (0.206-0.787)	0.008
Starting interferon >7 days from illness onset	4.643(2.004-10.755)	<0.001	1.766 (0.685-4.554)	0.239
CRP >8.0mg/L	0.803(0.474-1.359)	0.413		
IL-4 >3.2pg/ml	3.353(0.911-12.344)	0.069		
IL-6 >2.9pg/ml	1.382(0.450-4.242)	0.572		
D-dimer >0.5 μ g/L	1.577(0.943-2.636)	0.082		
More lung lobes lesion in chest CT images	2.448(1.366-4.387)	0.003	1.726 (0.871-3.419)	0.118

Abbreviations: CI, confidence interval; OR, odds ratio; CRP, C-reactive protein; IL-4, interleukin-4; IL-6, interleukin-6; CT, computed tomography.

Table 3 Comparison of Demographic and Clinical Characteristics between Patients With COVID-19 Who Treated With Arbidol

Characteristics	Arbidol Therapy ≤ 7 d		Arbidol Therapy > 7 d		Arbidol	Interferon-Arbidol
	From Onset	d From Onset	<i>P</i> Value	Monotherapy	Combination	<i>P</i> Value
	(n=89)	(n=118)		(n=82)	(n=139)	
Days of viral shedding, days	20 (16-25)	28 (21-33)	<0.001	28 (21.8-33)	21 (16-28)	<0.001
Age, years	39 (32-64.5)	60 (41-68.3)	0.001	66 (55.3-70)	40 (32-65)	<0.001
<65	67 (75.3)	65 (55.1)		35 (42.7)	104 (74.8)	
≥ 65	22 (24.7)	53 (44.9)		47 (57.3)	35 (25.2)	
Gender			0.623			0.058
Male	40 (44.9)	49 (41.5)		42 (51.2)	53 (38.1)	
Female	49 (55.1)	69 (58.5)		40 (48.8)	86 (61.9)	
Current smoking, n (%)	3 (3.4)	3 (2.5)	1.000	3 (3.7)	4 (2.9)	1.000
Date of illness onset			0.161			<0.001

Before January 31*	66 (74.2)	97 (82.2)		52 (63.4)	122 (87.8)	
After January 31	23 (25.8)	21 (17.8)		30 (36.6)	17 (12.2)	
Disease severity status			0.440			0.008
Mild/General	76 (85.4)	105 (89)		76 (92.7)	110 (79.1)	
Critical/severe	13 (14.6)	13 (11)		6 (7.3)	29 (20.9)	
Comorbidities	27 (30.3)	51 (43.2)	0.058	40 (48.8)	43 (30.9)	0.008
Hypertension	19 (21.3)	39 (33.1)	0.063	28 (34.1)	34 (24.5)	0.122
Cardiovascular disease	5 (5.6)	5 (4.2)	0.646	9 (11)	4 (2.9)	0.030
Diabetes	8 (9)	12 (10.2)	0.776	8 (9.8)	13 (9.4)	0.921
Chronic lung disease	2 (2.2)	4 (3.4)	0.947	4 (4.9)	2 (1.4)	0.275
Chronic kidney disease	0 (0)	1 (0.8)	1.000	0 (0)	1 (0.7)	1.000
Nervous system disease	1 (1.1)	2 (1.7)	1.000	2 (2.4)	1 (0.7)	0.642
Digestive system disease	3 (3.4)	2 (1.7)	0.749	4 (4.9)	1 (0.7)	0.124

Immune system disease	0 (0)	2 (1.7)	0.507	1 (1.2)	1 (0.7)	1.000
Hypothyroidism	2 (2.2)	0 (0)	0.184	0 (0)	2 (1.4)	0.531
Co-infections	2 (2.2)	8 (6.8)	0.239	0 (0)	11 (7.9)	0.008
Treatment in hospital						
Supplemental oxygen required	43 (48.3)	47 (39.8)	0.223	37 (45.1)	64 (46)	0.894
Nasal cannula	39 (43.8)	40 (33.9)		33 (40.2)	50 (36)	
Mask	1 (1.1)	3 (2.5)		1 (1.2)	5 (3.6)	
NMV/ IMV/ECMO	3 (3.4)	4 (3.4)		3 (3.7)	9 (6.5)	
Antibacterial	89 (100)	113 (95.8)	0.072	80 (97.6)	137 (98.6)	0.590
Glucocorticoid	19 (21.3)	22 (18.6)	0.629	10 (12.2)	37 (26.6)	0.011
Arbidol-Interferon combination	65 (73.0)	65 (55.1)	0.008			
Onset of symptoms to first medical visit, days	2 (1-4)	4 (1-8.3)	<0.001	4 (1-7)	3.0 (1.0- 6.0)	0.218

Onset of symptoms to usage, days				12 (7-17)	7.5 (4-11.3)	<0.001
Length of hospital, days	18.5 (14-25)	23 (15-27)	0.044	26 (18.3-27)	18 (11.8-25)	<0.001

Data are median (IQR) or n (%).P values were calculated by Mann-Whitney U test, χ^2 test, or Fisher's exact test, as appropriate. Values in boldface indicate statistical significance (P < .05).

Abbreviations: IQR, interquartile range; NMV, noninvasive ventilation; IMV, Invasive ventilation; ECMO, extracorporeal membrane oxygenation. * January 31 was included in the before January 31 group.